



## PRESS RELEASE

### INDUSTRIAL PRODUCTION INDEX: June 2020, y-o-y decrease of 4.9%

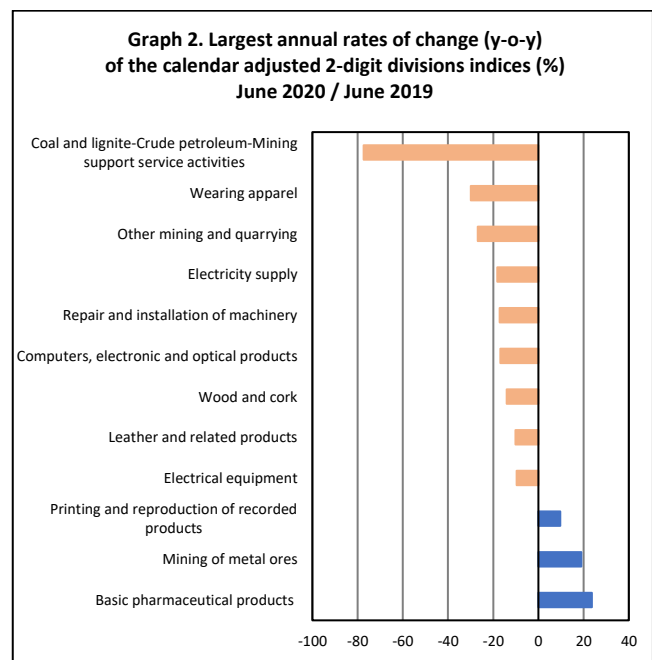
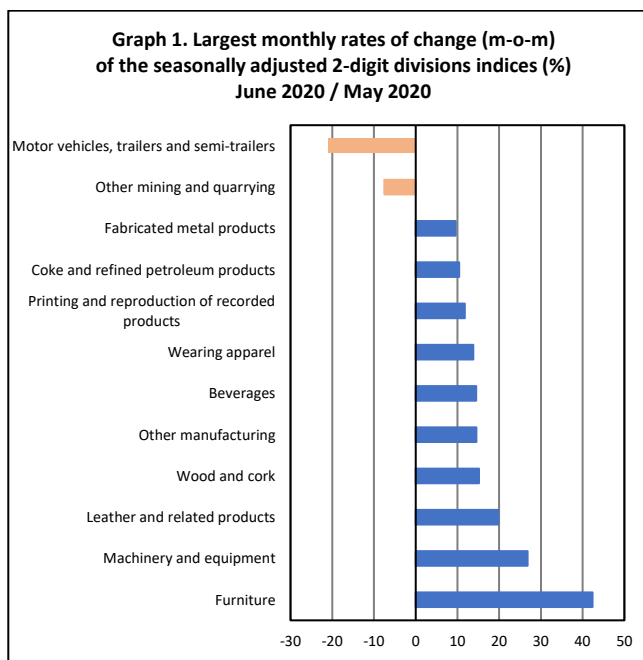
The Hellenic Statistical Authority announces the Industrial Production Index (IPI) with base year 2015=100.0 for June 2020, on the basis of provisional and working day adjusted data, as follows:

The Overall Industrial Production Index in June 2020 recorded a decrease of 4.9% compared with June 2019. The Overall IPI in June 2019 decreased by 0.5% compared with the corresponding index in June 2018 (Table 1).

The average Overall Industrial Production Index for the period from January to June 2020 recorded a decrease of 4.4% compared with the average IPI of the period from January to June 2019 (Table 2).

The seasonally adjusted Overall Industrial Production Index in June 2020 recorded an increase of 2.6% compared with the corresponding index of May 2020 (Table 4).

The manufacturing of furniture recorded the greatest percentage increase, whereas motor vehicles, trailers and semi-trailers showed the greatest reduction in June 2020 compared with May 2020. Comparing the indices of June 2020 with the corresponding indices of June 2019, the strongest decline was recorded in mining of coal and lignite, extraction of crude petroleum and natural gas, mining support service activities, while the greatest increase was recorded in basic pharmaceutical products and pharmaceutical preparations (Tables 1 and 4).



#### **Information for methodological issues:**

Business Statistics Division  
Manufacture-Construction Indices and Industrial Products Section  
Head of the Section: Diamantaki Aikaterini  
Tel: +30 213 135 2056  
Fax: +30 213 135 2506  
E-mail: [a.diamantaki@statistics.gr](mailto:a.diamantaki@statistics.gr)

#### **Information for data provision:**

Tel: +30 213 135 2022, 2308, 2310  
E-mail: [data.dissem@statistics.gr](mailto:data.dissem@statistics.gr)

## Evolution of the Industrial Production Index in June 2020

### I. Annual changes: June 2020/ June 2019 (Table 1)

The 4.9% decrease of the working day adjusted Overall IPI in June 2020, compared with the corresponding index in June 2019, is due to the annual changes of the sub-indices in the following industrial sections:

#### Decrease of:

- 17.6% in the Mining and Quarrying Index. The decrease was the result of the annual changes of the sub-indices in the following 2-digit divisions: mining of coal and lignite, extraction of crude petroleum and natural gas, mining support service activities, other mining and quarrying.
- 1.0% in the Manufacturing Index. The decrease was the result of the annual changes of the sub-indices in the following 2-digit divisions: wearing apparel, leather and related products, wood and products of wood and cork, computers, electronic and optical products, repair and installation of machinery and equipment.
- 18.2% in the Electricity Supply Index.
- 0.2% in the Water Supply Index.

### II. Rates of change of the average index in the period January – June 2020 compared with the corresponding index of the period January – June 2019 (Table 2)

The 4.4% decrease of the working day adjusted average Overall IPI in the 6-month period January – June 2020, compared with the corresponding index in January – June 2019, is due to the corresponding rates of change of the sub-indices in the following industrial sections:

#### 1. Decrease of:

- 6.2% in the Mining and Quarrying Index.
- 3.0% in the Manufacturing Index
- 10.3% in the Electricity Supply Index.

#### 2. Increase of:

- 1.1% in the Water Supply Index.

### III. Monthly changes: June 2020 / May 2020 (Table 4)

The 2.6% increase of the seasonally adjusted Overall IPI in June 2020, compared with the corresponding index in May 2020 is due to the monthly changes of the sub-indices in the following industrial sections:

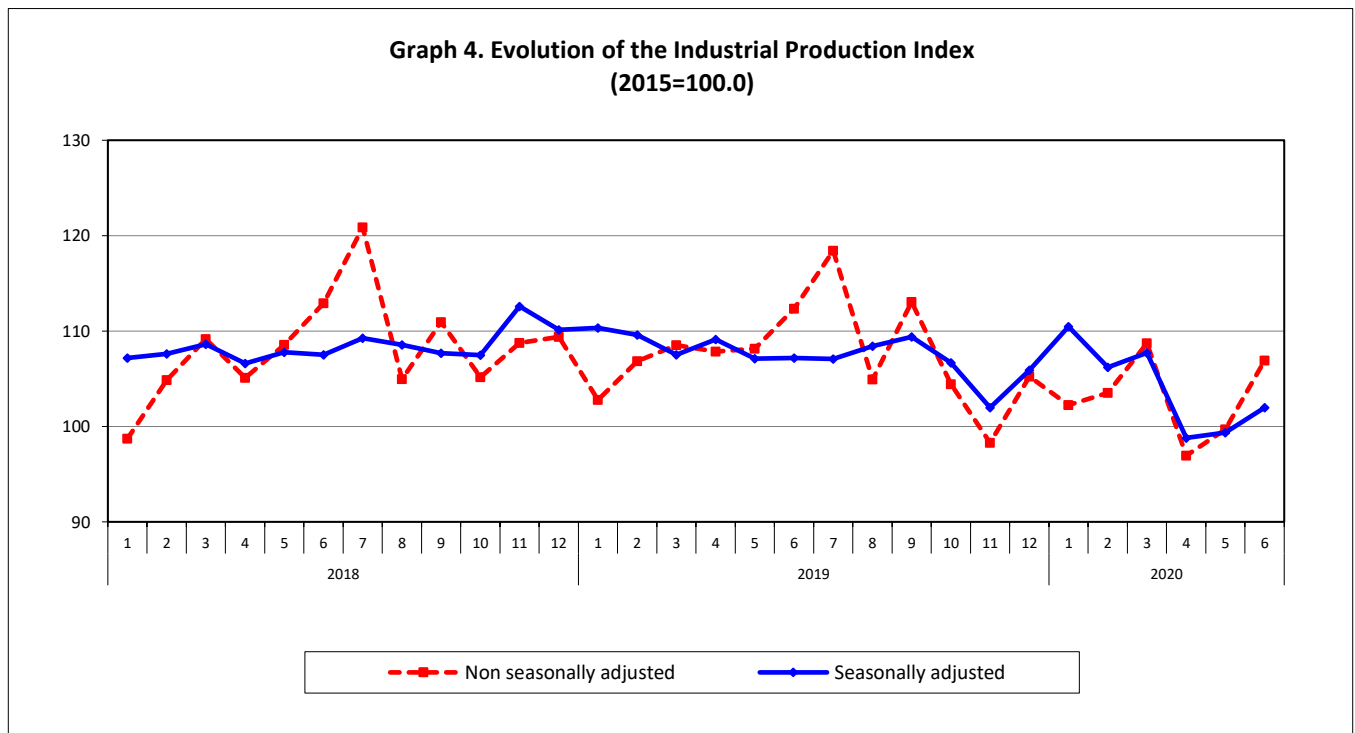
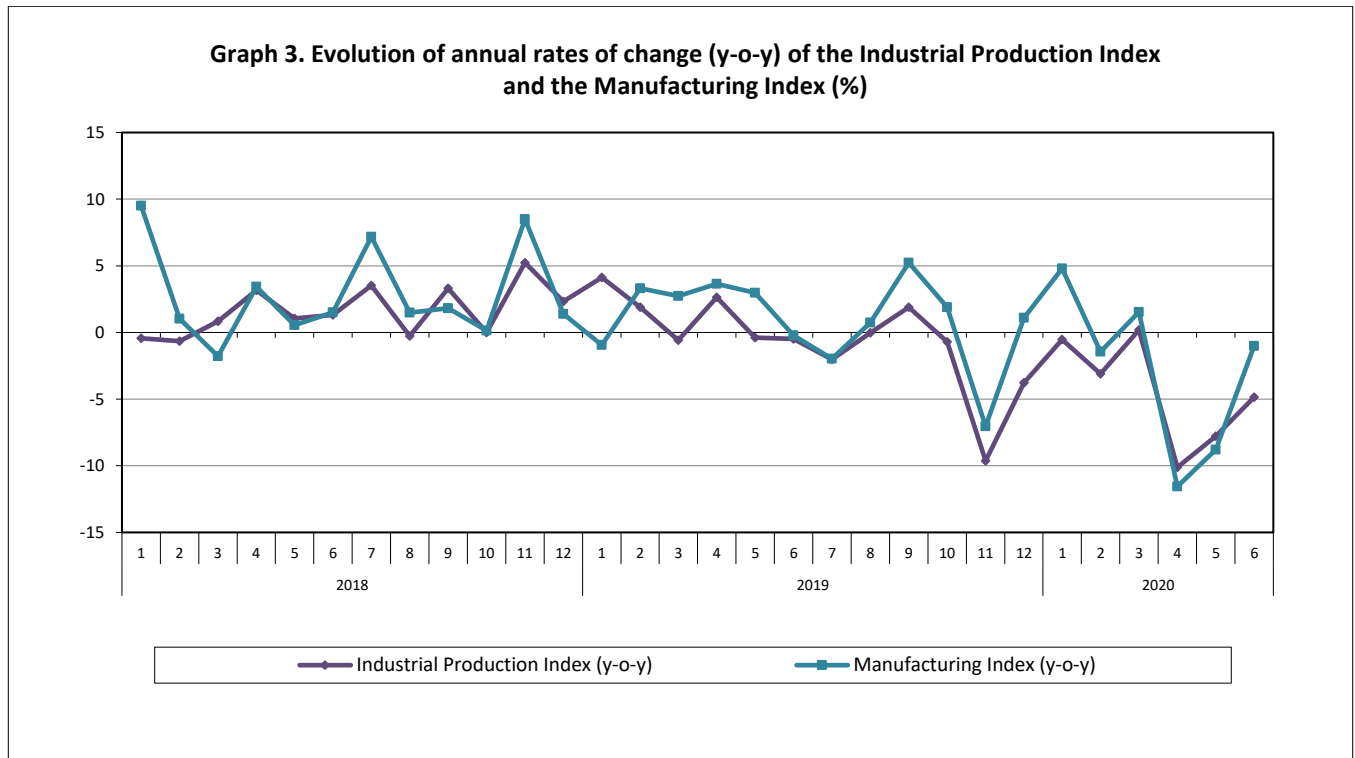
#### 1. Increase of:

- 5.2% in the Manufacturing Index.

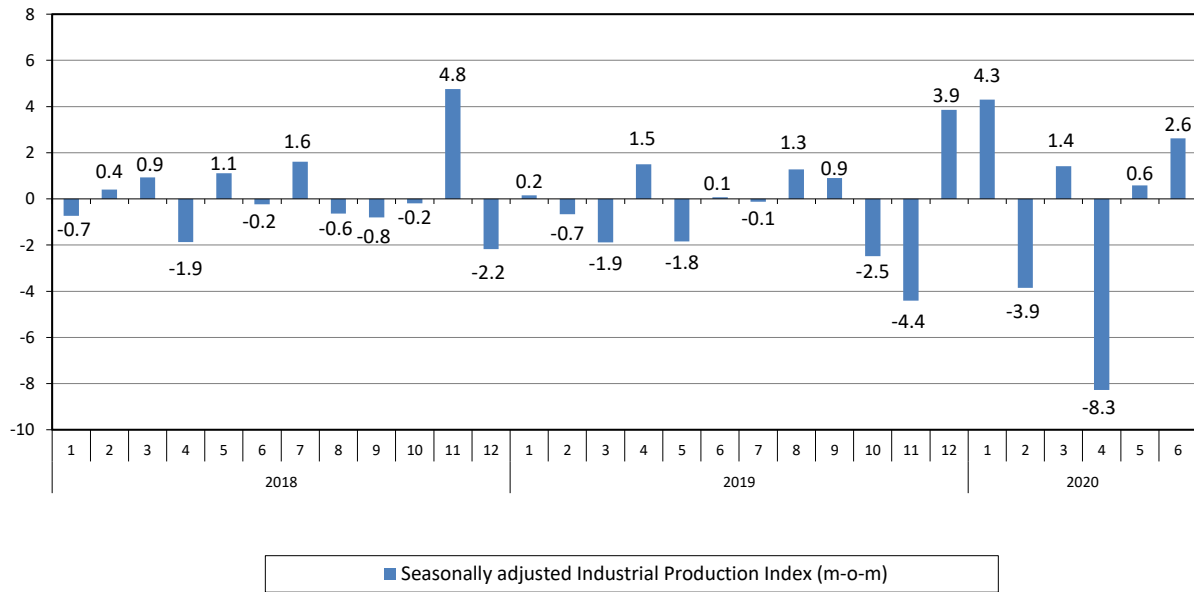
#### 2. Decrease of:

- 4.2% in the Mining and Quarrying Index.
- 5.2% in the Electricity Supply Index.
- 2.2% in the Water Supply Index

The following graphs depict the annual rates of change (y-o-y) of the Industrial Production Index and the Manufacturing Index, the evolution of the seasonally and non-seasonally adjusted Overall Industrial Production Index, as well as the monthly rates of change (m-o-m) of the seasonally adjusted index.



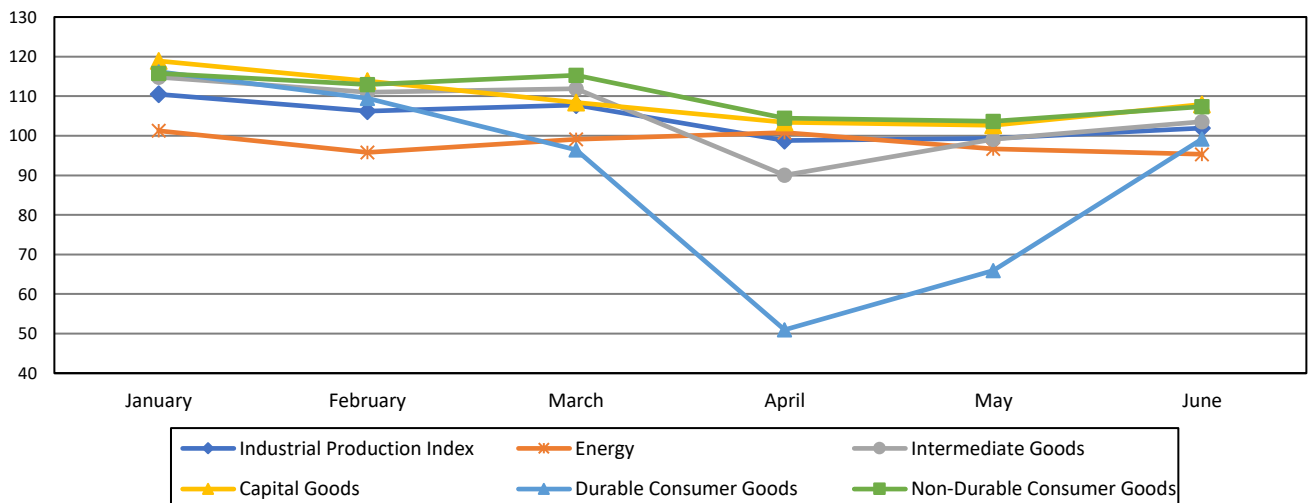
**Graph 5. Evolution of the monthly rates of change (m-o-m) of the seasonally adjusted Industrial Production Index (%)**



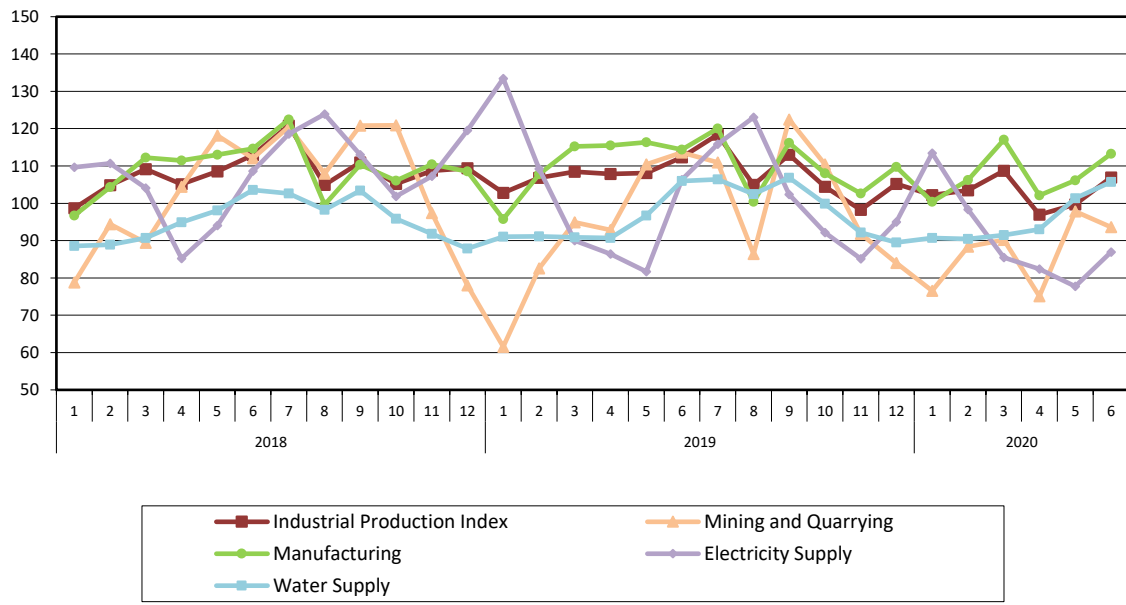
It should be noted that the time series with the seasonally adjusted indices is recalculated every time a new observation is added in the time series. Therefore, the seasonally adjusted data differ from the data published in the previous Press Release.

The following graphs depict the evolution of the seasonally adjusted Industrial Production Index and the Main Industrial Groupings, as well as the evolution of the Industrial Production Index and the Industrial Sections Indices.

**Graph 6. Evolution of the seasonally adjusted Industrial Production Index and the Main Industrial Groupings, January - June 2020 (2015=100.0)**



**Graph 7. Evolution of the Industrial Production Index and the Industrial Section Indices  
(2015=100.0)**



**Table 1. Annual rates of change of the Industrial Production Index***(Working day adjusted data, according to the real number of working days)***Base year: 2015=100.0**

| Code                             | Division   | June          |               |               | Rate of change (%) |             |
|----------------------------------|--|---------------|---------------|---------------|--------------------|-------------|
|                                  |  | 2020*         | 2019          | 2018          | 2020/2019          | 2019/2018   |
| <b>OVERALL INDEX</b>             |  | <b>106.89</b> | <b>112.35</b> | <b>112.90</b> | <b>-4.9</b>        | <b>-0.5</b> |
| <b>B</b>                         | <b>MINING AND QUARRYING</b>  | <b>93.62</b>  | <b>113.62</b> | <b>112.11</b> | <b>-17.6</b>       | <b>1.4</b>  |
| 05-06-09                         | Mining of coal and lignite – Extraction of crude petroleum and natural gas – Mining support service activities | 15.58         | 68.68         | 81.72         | -77.3              | -16.0       |
| 07                               | Mining of metal ores   | 156.51        | 131.52        | 129.97        | 19.0               | 1.2         |
| 08                               | Other mining and quarrying   | 83.45         | 114.06        | 110.42        | -26.8              | 3.3         |
| <b>C</b>                         | <b>MANUFACTURING</b>   | <b>113.25</b> | <b>114.39</b> | <b>114.63</b> | <b>-1.0</b>        | <b>-0.2</b> |
| 10                               | Food   | 95.40         | 102.36        | 103.77        | -6.8               | -1.4        |
| 11                               | Beverages  | 119.08        | 126.33        | 131.26        | -5.7               | -3.8        |
| 12                               | Tobacco products   | 129.86        | 139.11        | 99.16         | -6.6               | 40.3        |
| 13                               | Textiles   | 116.41        | 110.62        | 115.72        | 5.2                | -4.4        |
| 14                               | Wearing apparel  | 54.75         | 78.11         | 86.68         | -29.9              | -9.9        |
| 15                               | Leather and related products   | 65.51         | 72.92         | 88.71         | -10.2              | -17.8       |
| 16                               | Wood and products of wood and cork, except furniture   | 105.92        | 123.21        | 120.68        | -14.0              | 2.1         |
| 17                               | Paper and paper products   | 108.07        | 107.63        | 109.27        | 0.4                | -1.5        |
| 18                               | Printing and reproduction of recorded products   | 113.69        | 103.66        | 102.14        | 9.7                | 1.5         |
| 19                               | Coke and refined petroleum products  | 111.20        | 107.94        | 111.62        | 3.0                | -3.3        |
| 20                               | Chemicals and chemical products  | 136.38        | 130.82        | 125.35        | 4.3                | 4.4         |
| 21                               | Basic pharmaceutical products and pharmaceutical preparations  | 188.09        | 152.10        | 139.53        | 23.7               | 9.0         |
| 22                               | Rubber and plastic products  | 122.17        | 119.56        | 110.04        | 2.2                | 8.7         |
| 23                               | Other non-metallic mineral products  | 107.60        | 108.65        | 130.56        | -1.0               | -16.8       |
| 24                               | Basic metals   | 117.83        | 128.06        | 140.16        | -8.0               | -8.6        |
| 25                               | Fabricated metal products, except machinery and equipment  | 135.97        | 134.86        | 133.22        | 0.8                | 1.2         |
| 26                               | Computers, electronic and optical products   | 132.44        | 159.25        | 117.00        | -16.8              | 36.1        |
| 27                               | Electrical equipment   | 98.08         | 108.54        | 109.52        | -9.6               | -0.9        |
| 28                               | Machinery and equipment n. e. c.   | 109.65        | 114.99        | 109.32        | -4.6               | 5.2         |
| 29                               | Motor vehicles, trailers and semi-trailers   | 91.24         | 90.75         | 81.53         | 0.5                | 11.3        |
| 30                               | Other transport equipment  | 70.47         | 68.81         | 54.42         | 2.4                | 26.4        |
| 31                               | Furniture  | 143.13        | 140.79        | 151.99        | 1.7                | -7.4        |
| 32                               | Other manufacturing  | 120.71        | 116.60        | 110.24        | 3.5                | 5.8         |
| 33                               | Repair and installation of machinery and equipment   | 72.61         | 87.63         | 94.00         | -17.1              | -6.8        |
| <b>D</b>                         | <b>ELECTRICITY SUPPLY</b>  | <b>86.96</b>  | <b>106.30</b> | <b>108.66</b> | <b>-18.2</b>       | <b>-2.2</b> |
| 35                               | Electricity supply   | 86.96         | 106.30        | 108.66        | -18.2              | -2.2        |
| <b>E</b>                         | <b>WATER SUPPLY</b>  | <b>105.72</b> | <b>105.95</b> | <b>103.59</b> | <b>-0.2</b>        | <b>2.3</b>  |
| 36                               | Water collection, treatment and supply   | 105.72        | 105.95        | 103.59        | -0.2               | 2.3         |
| <b>MAIN INDUSTRIAL GROUPINGS</b> |  |               |               |               |                    |             |
| 1                                | Energy   | 96.29         | 106.71        | 109.01        | -9.8               | -2.1        |
| 2                                | Intermediate goods   | 114.09        | 117.99        | 121.44        | -3.3               | -2.8        |
| 3                                | Capital goods  | 111.14        | 115.45        | 108.75        | -3.7               | 6.2         |
| 4                                | Consumer Durables  | 117.38        | 125.36        | 129.43        | -6.4               | -3.1        |
| 5                                | Consumer Non-Durables  | 112.47        | 113.30        | 111.23        | -0.7               | 1.9         |

\* Provisional data

*Note: The indices are rounded up to two decimal digits when published and percentage changes up to one decimal digit when published.*

**Table 2. Average indices of the period January – June and rates of change (%) of the Industrial Production Index**  
(Working day adjusted data, according to the real number of working days)

Base year: 2015=100.0

| Code                             | Division   | Average indices of the period Jan.- June |               |               | Rate of change (%) |             |
|----------------------------------|--|--|---------------|---------------|--------------------|-------------|
|                                  |  | 2020*                                    | 2019          | 2018          | 2020/2019          | 2019/2018   |
| <b>OVERALL INDEX</b>             |  | <b>103.00</b>                            | <b>107.74</b> | <b>106.54</b> | <b>-4.4</b>        | <b>1.1</b>  |
| <b>B</b>                         | <b>MINING AND QUARRYING</b>  | <b>86.95</b>                             | <b>92.66</b>  | <b>99.53</b>  | <b>-6.2</b>        | <b>-6.9</b> |
| 05-06-09                         | Mining of coal and lignite – Extraction of crude petroleum and natural gas – Mining support service activities | 23.09                                    | 72.49         | 71.74         | -68.2              | 1.0         |
| 07                               | Mining of metal ores   | 145.69                                   | 109.96        | 136.73        | 32.5               | -19.6       |
| 08                               | Other mining and quarrying   | 76.13                                    | 89.66         | 90.82         | -15.1              | -1.3        |
| <b>C</b>                         | <b>MANUFACTURING</b>   | <b>107.52</b>                            | <b>110.84</b> | <b>108.71</b> | <b>-3.0</b>        | <b>2.0</b>  |
| 10                               | Food   | 100.69                                   | 101.27        | 99.60         | -0.6               | 1.7         |
| 11                               | Beverages  | 85.54                                    | 99.61         | 101.77        | -14.1              | -2.1        |
| 12                               | Tobacco products   | 113.15                                   | 114.30        | 83.27         | -1.0               | 37.3        |
| 13                               | Textiles   | 101.54                                   | 110.09        | 114.55        | -7.8               | -3.9        |
| 14                               | Wearing apparel  | 56.33                                    | 84.58         | 91.88         | -33.4              | -8.0        |
| 15                               | Leather and related products   | 70.04                                    | 116.03        | 118.26        | -39.6              | -1.9        |
| 16                               | Wood and products of wood and cork, except furniture   | 96.08                                    | 108.66        | 103.53        | -11.6              | 5.0         |
| 17                               | Paper and paper products   | 111.80                                   | 105.75        | 107.08        | 5.7                | -1.2        |
| 18                               | Printing and reproduction of recorded products   | 105.22                                   | 102.12        | 98.69         | 3.0                | 3.5         |
| 19                               | Coke and refined petroleum products  | 104.22                                   | 106.80        | 114.85        | -2.4               | -7.0        |
| 20                               | Chemicals and chemical products  | 129.31                                   | 130.03        | 120.76        | -0.6               | 7.7         |
| 21                               | Basic pharmaceutical products and pharmaceutical preparations  | 182.20                                   | 157.21        | 128.91        | 15.9               | 21.9        |
| 22                               | Rubber and plastic products  | 114.79                                   | 119.24        | 108.81        | -3.7               | 9.6         |
| 23                               | Other non-metallic mineral products  | 97.03                                    | 109.64        | 117.97        | -11.5              | -7.1        |
| 24                               | Basic metals   | 118.38                                   | 130.59        | 130.15        | -9.4               | 0.3         |
| 25                               | Fabricated metal products, except machinery and equipment  | 116.30                                   | 120.31        | 120.72        | -3.3               | -0.3        |
| 26                               | Computers, electronic and optical products   | 146.05                                   | 142.44        | 109.14        | 2.5                | 30.5        |
| 27                               | Electrical equipment   | 93.69                                    | 104.28        | 104.71        | -10.2              | -0.4        |
| 28                               | Machinery and equipment n. e. c.   | 95.93                                    | 106.71        | 102.65        | -10.1              | 4.0         |
| 29                               | Motor vehicles, trailers and semi-trailers   | 93.21                                    | 79.88         | 82.55         | 16.7               | -3.2        |
| 30                               | Other transport equipment  | 55.81                                    | 52.92         | 58.80         | 5.5                | -10.0       |
| 31                               | Furniture  | 102.30                                   | 122.00        | 122.98        | -16.1              | -0.8        |
| 32                               | Other manufacturing  | 93.95                                    | 107.45        | 103.65        | -12.6              | 3.7         |
| 33                               | Repair and installation of machinery and equipment   | 82.76                                    | 91.51         | 85.74         | -9.6               | 6.7         |
| <b>D</b>                         | <b>ELECTRICITY SUPPLY</b>  | <b>90.71</b>                             | <b>101.18</b> | <b>102.06</b> | <b>-10.3</b>       | <b>-0.9</b> |
| 35                               | Electricity supply   | 90.71                                    | 101.18        | 102.06        | -10.3              | -0.9        |
| <b>E</b>                         | <b>WATER SUPPLY</b>  | <b>95.46</b>                             | <b>94.41</b>  | <b>94.13</b>  | <b>1.1</b>         | <b>0.3</b>  |
| 36                               | Water collection, treatment and supply   | 95.46                                    | 94.41         | 94.13         | 1.1                | 0.3         |
| <b>MAIN INDUSTRIAL GROUPINGS</b> |  |  |               |               |                    |             |
| 1                                | Energy   | 95.31                                    | 102.21        | 105.24        | -6.8               | -2.9        |
| 2                                | Intermediate goods   | 107.09                                   | 113.19        | 113.08        | -5.4               | 0.1         |
| 3                                | Capital goods  | 104.48                                   | 108.11        | 102.31        | -3.4               | 5.7         |
| 4                                | Consumer Durables  | 88.06                                    | 107.24        | 111.63        | -17.9              | -3.9        |
| 5                                | Consumer Non-Durables  | 109.48                                   | 110.13        | 103.90        | -0.6               | 6.0         |

\* Provisional data

Note: The indices are rounded up to two decimal digits when published and percentage changes up to one decimal digit when published.

**Table 3. Monthly rate of change of the Industrial Production Index***(Working day adjusted data, according to the real number of working days)*

Base year: 2015=100.0

| Code                             | Division   | June 2020*    | May 2020**    | Rate of change (%)<br>June 2020/ May 2020 |
|----------------------------------|--|---------------|---------------|---|
| <b>OVERALL INDEX</b>             |  | <b>106.89</b> | <b>99.71</b>  | <b>7.2</b>                                |
| <b>B</b>                         | <b>MINING AND QUARRYING</b>  | <b>93.62</b>  | <b>97.84</b>  | <b>-4.3</b>                               |
| 05-06-09                         | Mining of coal and lignite – Extraction of crude petroleum and natural gas – Mining support service activities | 15.58         | 13.42         | 16.1                                      |
| 07                               | Mining of metal ores   | 156.51        | 163.78        | -4.4                                      |
| 08                               | Other mining and quarrying   | 83.45         | 87.55         | -4.7                                      |
| <b>C</b>                         | <b>MANUFACTURING</b>   | <b>113.25</b> | <b>106.13</b> | <b>6.7</b>                                |
| 10                               | Food   | 95.40         | 96.40         | -1.0                                      |
| 11                               | Beverages  | 119.08        | 89.14         | 33.6                                      |
| 12                               | Tobacco products   | 129.86        | 124.97        | 3.9                                       |
| 13                               | Textiles   | 116.41        | 109.45        | 6.4                                       |
| 14                               | Wearing apparel  | 54.75         | 53.83         | 1.7                                       |
| 15                               | Leather and related products   | 65.51         | 67.78         | -3.4                                      |
| 16                               | Wood and products of wood and cork, except furniture   | 105.92        | 86.49         | 22.5                                      |
| 17                               | Paper and paper products   | 108.07        | 107.51        | 0.5                                       |
| 18                               | Printing and reproduction of recorded products   | 113.69        | 101.77        | 11.7                                      |
| 19                               | Coke and refined petroleum products  | 111.20        | 103.50        | 7.4                                       |
| 20                               | Chemicals and chemical products  | 136.38        | 130.88        | 4.2                                       |
| 21                               | Basic pharmaceutical products and pharmaceutical preparations  | 188.09        | 177.78        | 5.8                                       |
| 22                               | Rubber and plastic products  | 122.17        | 116.51        | 4.9                                       |
| 23                               | Other non-metallic mineral products  | 107.60        | 99.51         | 8.1                                       |
| 24                               | Basic metals   | 117.83        | 118.90        | -0.9                                      |
| 25                               | Fabricated metal products, except machinery and equipment  | 135.97        | 118.63        | 14.6                                      |
| 26                               | Computers, electronic and optical products   | 132.44        | 134.77        | -1.7                                      |
| 27                               | Electrical equipment   | 98.08         | 88.08         | 11.3                                      |
| 28                               | Machinery and equipment n. e. c.   | 109.65        | 82.59         | 32.8                                      |
| 29                               | Motor vehicles, trailers and semi-trailers   | 91.24         | 101.60        | -10.2                                     |
| 30                               | Other transport equipment  | 70.47         | 64.29         | 9.6                                       |
| 31                               | Furniture  | 143.13        | 93.67         | 52.8                                      |
| 32                               | Other manufacturing  | 120.71        | 99.40         | 21.4                                      |
| 33                               | Repair and installation of machinery and equipment   | 72.61         | 75.56         | -3.9                                      |
| <b>D</b>                         | <b>ELECTRICITY SUPPLY</b>  | <b>86.96</b>  | <b>77.74</b>  | <b>11.9</b>                               |
| 35                               | Electricity supply   | 86.96         | 77.74         | 11.9                                      |
| <b>E</b>                         | <b>WATER SUPPLY</b>  | <b>105.72</b> | <b>101.34</b> | <b>4.3</b>                                |
| 36                               | Water collection, treatment and supply   | 105.72        | 101.34        | 4.3                                       |
| <b>MAIN INDUSTRIAL GROUPINGS</b> |  |               |               |   |
| 1                                | Energy   | 96.29         | 88.06         | 9.3                                       |
| 2                                | Intermediate goods   | 114.09        | 108.54        | 5.1                                       |
| 3                                | Capital goods  | 111.14        | 98.99         | 12.3                                      |
| 4                                | Consumer Durables  | 117.38        | 82.84         | 41.7                                      |
| 5                                | Consumer Non-Durables  | 112.47        | 107.96        | 4.2                                       |

\* Provisional data    \*\*Revised data

*Note: The indices are rounded up to two decimal digits when published and percentage changes up to one decimal digit when published.*



**Table 4. Monthly rate of change of the seasonally adjusted Industrial Production Index**

Base year: 2015=100.0

| Code                             | Division   | June 2020     | May 2020      | Rate of change (%)<br>June 2020/ May 2020 |
|----------------------------------|--|---------------|---------------|---|
| <b>OVERALL INDEX</b>             |  | <b>101.97</b> | <b>99.37</b>  | <b>2.6</b>                                |
| <b>B</b>                         | <b>MINING AND QUARRYING</b>  | <b>82.91</b>  | <b>86.55</b>  | <b>-4.2</b>                               |
| 05-06-09                         | Mining of coal and lignite – Extraction of crude petroleum and natural gas – Mining support service activities | -             | -             | -   |
| 07                               | Mining of metal ores   | 149.89        | 154.11        | -2.7                                      |
| 08                               | Other mining and quarrying   | 69.68         | 75.35         | -7.5                                      |
| <b>C</b>                         | <b>MANUFACTURING</b>   | <b>107.05</b> | <b>101.71</b> | <b>5.2</b>                                |
| 10                               | Food   | 99.19         | 99.34         | -0.1                                      |
| 11                               | Beverages  | 86.28         | 75.36         | 14.5                                      |
| 12                               | Tobacco products   | 117.90        | 121.00        | -2.6                                      |
| 13                               | Textiles   | 98.68         | 92.07         | 7.2                                       |
| 14                               | Wearing apparel  | 58.33         | 51.26         | 13.8                                      |
| 15                               | Leather and related products   | 82.00         | 68.44         | 19.8                                      |
| 16                               | Wood and products of wood and cork, except furniture   | 93.62         | 81.30         | 15.2                                      |
| 17                               | Paper and paper products   | 102.04        | 105.75        | -3.5                                      |
| 18                               | Printing and reproduction of recorded products   | 107.93        | 96.57         | 11.8                                      |
| 19                               | Coke and refined petroleum products  | 115.54        | 104.65        | 10.4                                      |
| 20                               | Chemicals and chemical products  | 125.76        | 119.55        | 5.2                                       |
| 21                               | Basic pharmaceutical products and pharmaceutical preparations  | 186.11        | 180.31        | 3.2                                       |
| 22                               | Rubber and plastic products  | 114.55        | 110.13        | 4.0                                       |
| 23                               | Other non-metallic mineral products  | 95.99         | 89.62         | 7.1                                       |
| 24                               | Basic metals   | 108.85        | 112.51        | -3.3                                      |
| 25                               | Fabricated metal products, except machinery and equipment  | 116.45        | 106.28        | 9.6                                       |
| 26                               | Computers, electronic and optical products   | 136.38        | 143.00        | -4.6                                      |
| 27                               | Electrical equipment   | 88.44         | 80.84         | 9.4                                       |
| 28                               | Machinery and equipment n. e. c.   | 99.25         | 78.27         | 26.8                                      |
| 29                               | Motor vehicles, trailers and semi-trailers   | 82.36         | 104.08        | -20.9                                     |
| 30                               | Other transport equipment  | 64.84         | 63.64         | 1.9                                       |
| 31                               | Furniture  | 106.42        | 74.75         | 42.4                                      |
| 32                               | Other manufacturing  | 108.54        | 94.76         | 14.5                                      |
| 33                               | Repair and installation of machinery and equipment   | 78.49         | 81.34         | -3.5                                      |
| <b>D</b>                         | <b>ELECTRICITY SUPPLY</b>  | <b>86.83</b>  | <b>91.61</b>  | <b>-5.2</b>                               |
| 35                               | Electricity supply   | 86.83         | 91.61         | -5.2                                      |
| <b>E</b>                         | <b>WATER SUPPLY</b>  | <b>96.71</b>  | <b>98.92</b>  | <b>-2.2</b>                               |
| 36                               | Water collection, treatment and supply   | 96.71         | 98.92         | -2.2                                      |
| <b>MAIN INDUSTRIAL GROUPINGS</b> |  |               |               |   |
| 1                                | Energy   | 95.33         | 96.69         | -1.4                                      |
| 2                                | Intermediate goods   | 103.55        | 99.09         | 4.5                                       |
| 3                                | Capital goods  | 107.89        | 102.64        | 5.1                                       |
| 4                                | Consumer Durables  | 99.22         | 65.95         | 50.5                                      |
| 5                                | Consumer Non-Durables  | 107.35        | 103.66        | 3.6                                       |

*Notes:*

- 1. The indices are rounded up to two decimal digits when published and percentage changes up to one decimal digit when published.*
- 2. The whole time-series with seasonally adjusted indices is recalculated every time a new observation is added in the time-series.*
- 3. The composed index of divisions 05-06-09 is not seasonally adjusted, due to the fact that it is calculated from January 2015 and thus the number of observations is not adequate.*

**Table 5. Evolution of the Overall Industrial Production Index**

*(Working day adjusted data, according to the real number of working days)*

**Base year: 2015=100.0**

| Year and month        | Overall Index | Monthly rate of change (%) | Annual rate of change (%) | 12-month average index (moving average) | Rate of change of the 12-month average index (%) |
|-----------------------|---------------|----------------------------|---------------------------|---|--|
| <b>2018:</b> 1        | 98.71         | -7.7                       | -0.4                      | 106.50                                  | 3.4  |
| 2                     | 104.86        | 6.2                        | -0.7                      | 106.44                                  | 2.5  |
| 3                     | 109.14        | 4.1                        | 0.8                       | 106.52                                  | 1.9  |
| 4                     | 105.08        | -3.7                       | 3.2                       | 106.79                                  | 2.2  |
| 5                     | 108.56        | 3.3                        | 1.0                       | 106.88                                  | 1.8  |
| 6                     | 112.90        | 4.0                        | 1.3                       | 107.00                                  | 1.5  |
| 7                     | 120.86        | 7.0                        | 3.5                       | 107.34                                  | 1.6  |
| 8                     | 104.96        | -13.2                      | -0.3                      | 107.32                                  | 1.2  |
| 9                     | 110.95        | 5.7                        | 3.3                       | 107.62                                  | 1.3  |
| 10                    | 105.16        | -5.2                       | 0.004                     | 107.62                                  | 1.2  |
| 11                    | 108.75        | 3.4                        | 5.2                       | 108.07                                  | 1.5  |
| 12                    | 109.38        | 0.6                        | 2.3                       | 108.28                                  | 1.6  |
| <b>Annual average</b> | <b>108.28</b> |                            |                           |   |  |
| <b>2019:</b> 1        | 102.78        | -6.0                       | 4.1                       | 108.61                                  | 2.0  |
| 2                     | 106.85        | 4.0                        | 1.9                       | 108.78                                  | 2.2  |
| 3                     | 108.50        | 1.5                        | -0.6                      | 108.73                                  | 2.1  |
| 4                     | 107.85        | -0.6                       | 2.6                       | 108.96                                  | 2.0  |
| 5                     | 108.13        | 0.3                        | -0.4                      | 108.92                                  | 1.9  |
| 6                     | 112.35        | 3.9                        | -0.5                      | 108.88                                  | 1.8  |
| 7                     | 118.42        | 5.4                        | -2.0                      | 108.67                                  | 1.2  |
| 8                     | 104.92        | -11.4                      | -0.03                     | 108.67                                  | 1.3  |
| 9                     | 113.05        | 7.7                        | 1.9                       | 108.85                                  | 1.1  |
| 10                    | 104.43        | -7.6                       | -0.7                      | 108.79                                  | 1.1  |
| 11                    | 98.28         | -5.9                       | -9.6                      | 107.91                                  | -0.1   |
| 12                    | 105.24        | 7.1                        | -3.8                      | 107.57                                  | -0.7   |
| <b>Annual average</b> | <b>107.57</b> |                            |                           |   |  |
| <b>2020*:</b> 1       | 102.24        | -2.9                       | -0.5                      | 107.52                                  | -1.0   |
| 2                     | 103.53        | 1.3                        | -3.1                      | 107.25                                  | -1.4   |
| 3                     | 108.71        | 5.0                        | 0.2                       | 107.26                                  | -1.3   |
| 4                     | 96.94         | -10.8                      | -10.1                     | 106.35                                  | -2.4   |
| 5                     | 99.71         | 2.9                        | -7.8                      | 105.65                                  | -3.0   |
| 6                     | 106.89        | 7.2                        | -4.9                      | 105.20                                  | -3.4   |

\* Provisional data

*Note: The indices are rounded up to two decimal digits when published and percentage changes up to one decimal digit when published.*

**Table 6. Monthly evolution of the seasonally adjusted Overall Industrial Production Index and Main Industrial Groupings**

Base year: 2015=100.0

| Year and month        | Overall Index |                            | Energy        |                            | Intermediate goods |                            | Capital goods |                            | Consumer durables |                            | Consumer non-durables |                            |
|-----------------------|---------------|----------------------------|---------------|----------------------------|--------------------|----------------------------|---------------|----------------------------|-------------------|----------------------------|-----------------------|----------------------------|
|                       | Index         | Monthly rate of change (%) | Index         | Monthly rate of change (%) | Index              | Monthly rate of change (%) | Index         | Monthly rate of change (%) | Index             | Monthly rate of change (%) | Index                 | Monthly rate of change (%) |
| <b>2018:</b>          |               |                            |               |                            |                    |                            |               |                            |                   |                            |                       |                            |
| 1                     | 107.19        | -0.7                       | 103.72        | -3.7                       | 113.44             | 2.1                        | 110.44        | 10.5                       | 109.93            | -2.4                       | 105.55                | -2.0                       |
| 2                     | 107.62        | 0.4                        | 109.52        | 5.6                        | 110.48             | -2.6                       | 99.32         | -10.1                      | 107.61            | -2.1                       | 105.30                | -0.2                       |
| 3                     | 108.62        | 0.9                        | 113.50        | 3.6                        | 109.82             | -0.6                       | 102.77        | 3.5                        | 108.47            | 0.8                        | 103.35                | -1.8                       |
| 4                     | 106.60        | -1.9                       | 107.01        | -5.7                       | 111.06             | 1.1                        | 111.93        | 8.9                        | 107.90            | -0.5                       | 101.17                | -2.1                       |
| 5                     | 107.77        | 1.1                        | 109.54        | 2.4                        | 109.28             | -1.6                       | 107.84        | -3.7                       | 106.08            | -1.7                       | 104.54                | 3.3                        |
| 6                     | 107.51        | -0.2                       | 107.90        | -1.5                       | 110.21             | 0.8                        | 103.81        | -3.7                       | 109.44            | 3.2                        | 105.83                | 1.2                        |
| 7                     | 109.25        | 1.6                        | 106.67        | -1.1                       | 113.80             | 3.3                        | 106.58        | 2.7                        | 101.88            | -6.9                       | 109.90                | 3.8                        |
| 8                     | 108.55        | -0.6                       | 109.50        | 2.6                        | 115.90             | 1.8                        | 105.42        | -1.1                       | 102.86            | 1.0                        | 102.83                | -6.4                       |
| 9                     | 107.68        | -0.8                       | 112.00        | 2.3                        | 108.26             | -6.6                       | 107.22        | 1.7                        | 99.39             | -3.4                       | 102.57                | -0.3                       |
| 10                    | 107.47        | -0.2                       | 108.10        | -3.5                       | 108.72             | 0.4                        | 103.77        | -3.2                       | 99.86             | 0.5                        | 107.11                | 4.4                        |
| 11                    | 112.59        | 4.8                        | 112.54        | 4.1                        | 111.01             | 2.1                        | 109.75        | 5.8                        | 98.14             | -1.7                       | 115.36                | 7.7                        |
| 12                    | 110.14        | -2.2                       | 111.66        | -0.8                       | 107.69             | -3.0                       | 105.87        | -3.5                       | 105.22            | 7.2                        | 111.58                | -3.3                       |
| <b>Annual average</b> | <b>108.42</b> |                            | <b>109.30</b> |                            | <b>110.81</b>      |                            | <b>106.23</b> |                            | <b>104.73</b>     |                            | <b>106.26</b>         |                            |
| <b>2019:</b>          |               |                            |               |                            |                    |                            |               |                            |                   |                            |                       |                            |
| 1                     | 110.32        | 0.2                        | 114.09        | 2.2                        | 108.43             | 0.7                        | 104.75        | -1.1                       | 97.03             | -7.8                       | 109.36                | -2.0                       |
| 2                     | 109.59        | -0.7                       | 107.93        | -5.4                       | 110.47             | 1.9                        | 112.84        | 7.7                        | 101.07            | 4.2                        | 110.48                | 1.0                        |
| 3                     | 107.52        | -1.9                       | 100.56        | -6.8                       | 111.95             | 1.3                        | 114.07        | 1.1                        | 105.44            | 4.3                        | 110.86                | 0.3                        |
| 4                     | 109.13        | 1.5                        | 102.93        | 2.4                        | 114.13             | 1.9                        | 113.87        | -0.2                       | 107.57            | 2.0                        | 111.56                | 0.6                        |
| 5                     | 107.11        | -1.8                       | 98.95         | -3.9                       | 111.63             | -2.2                       | 113.30        | -0.5                       | 104.89            | -2.5                       | 111.95                | 0.3                        |
| 6                     | 107.19        | 0.1                        | 105.62        | 6.7                        | 107.11             | -4.0                       | 111.40        | -1.7                       | 105.68            | 0.8                        | 108.12                | -3.4                       |
| 7                     | 107.06        | -0.1                       | 101.79        | -3.6                       | 109.02             | 1.8                        | 111.61        | 0.2                        | 110.61            | 4.7                        | 110.53                | 2.2                        |
| 8                     | 108.43        | 1.3                        | 108.31        | 6.4                        | 108.45             | -0.5                       | 111.22        | -0.4                       | 103.65            | -6.3                       | 108.05                | -2.2                       |
| 9                     | 109.40        | 0.9                        | 103.16        | -4.8                       | 110.45             | 1.8                        | 115.74        | 4.1                        | 108.61            | 4.8                        | 114.51                | 6.0                        |
| 10                    | 106.69        | -2.5                       | 99.07         | -4.0                       | 110.86             | 0.4                        | 113.70        | -1.8                       | 110.17            | 1.4                        | 110.63                | -3.4                       |
| 11                    | 101.98        | -4.4                       | 90.86         | -8.3                       | 106.68             | -3.8                       | 108.93        | -4.2                       | 113.69            | 3.2                        | 109.34                | -1.2                       |
| 12                    | 105.91        | 3.9                        | 95.62         | 5.2                        | 109.14             | 2.3                        | 114.50        | 5.1                        | 105.14            | -7.5                       | 113.62                | 3.9                        |
| <b>Annual average</b> | <b>107.53</b> |                            | <b>102.41</b> |                            | <b>109.86</b>      |                            | <b>112.16</b> |                            | <b>106.13</b>     |                            | <b>110.75</b>         |                            |
| <b>2020:</b>          |               |                            |               |                            |                    |                            |               |                            |                   |                            |                       |                            |
| 1                     | 110.47        | 4.3                        | 101.25        | 5.9                        | 114.79             | 5.2                        | 118.90        | 3.8                        | 116.18            | 10.5                       | 115.76                | 1.9                        |
| 2                     | 106.22        | -3.9                       | 95.81         | -5.4                       | 110.98             | -3.3                       | 113.82        | -4.3                       | 109.48            | -5.8                       | 112.92                | -2.5                       |
| 3                     | 107.72        | 1.4                        | 99.09         | 3.4                        | 111.86             | 0.8                        | 108.42        | -4.7                       | 96.41             | -11.9                      | 115.31                | 2.1                        |
| 4                     | 98.80         | -8.3                       | 100.77        | 1.7                        | 90.03              | -19.5                      | 103.40        | -4.6                       | 50.96             | -47.1                      | 104.43                | -9.4                       |
| 5                     | 99.37         | 0.6                        | 96.69         | -4.0                       | 99.09              | 10.1                       | 102.64        | -0.7                       | 65.95             | 29.4                       | 103.66                | -0.7                       |
| 6                     | 101.97        | 2.6                        | 95.33         | -1.4                       | 103.55             | 4.5                        | 107.89        | 5.1                        | 99.22             | 50.5                       | 107.35                | 3.6                        |

**Notes:**

1. The indices are rounded up to two decimal digits when published and percentage changes up to one decimal digit when published.
2. The whole time-series with seasonally adjusted indices is recalculated every time a new observation is added in the time-series.

## METHODOLOGICAL NOTES

|   |  |
|---|--|
| <b>Generally</b>  | The Industrial Production Index (IPI) in Greece has been compiled by the Hellenic Statistical Authority (ELSTAT) from 1959 onwards.  |
| <b>Purpose of the index</b>   | The objective of the index is to compare the magnitude (volume) of the output in the current month in the mining and quarrying, manufacturing, electricity and water supply divisions with the corresponding output of a given fixed period, which is considered as base period. The Industrial Production Index shows the evolution of the value added of the production factors cost, at constant prices.  |
| <b>Legal framework</b>  | The compilation of the IPI is governed by Council Regulation (EC) No 1165/1998 concerning short-term statistics. Furthermore, the IPI is governed by Regulation (EC) No 1893/2006 of the European Parliament and of the Council, by Commission Regulation (EC) No 656/2007 and by Council Regulation (EC) No 451/2008.   |
| <b>Reference period</b>   | Month.   |
| <b>Base year</b>  | 2015=100.0.  |
| <b>Revision</b>   | The IPI is a fixed base index. The Industrial Production Index was currently revised with new base year 2015 (2015=100.0) according to the provisions of Council Regulation No 1165/1998 concerning short-term statistics. Short-term indices are revised every five (5) years, particularly in calendar years ending in 0 or 5.   |
| <b>Statistical classifications</b>  | At the level of branches of economic activities, the statistical classification of economic activities NACE Rev.2 of EU was used (Regulation No 1893/2006), while at the level of main industrial groupings, the allocation of two-digit and three-digit NACE Rev. 2 headings to categories of aggregate classification was used, in accordance with Council Regulation No 656/2007. At product level, the statistical classification CPA 2008 of EU was used, according to Council Regulation No 451/2008.  |
| <b>Geographical coverage</b>  | The index covers the whole Country.  |
| <b>Coverage of economic activities</b>  | The index covers all the sections of industry, the main industrial groups, as well as all levels of economic activity.   |
| <b>Statistical survey</b>   | The data are collected from a sample of 1,263 enterprises. The survey covers 325 products and the measurement of the surveyed products is made in terms of output quantities or in terms of production value or turnover, according to the specific features in each branch of economic activity.  |
| <b>Data collection, processing and imputation in the context of the COVID-19 pandemic</b> | <p>The compilation of the indices was mainly based on data collected by the enterprises (via web-based application, email), as well as data from administrative sources. In order to deal with missing data for products measured in terms of output quantities, appropriate estimation methods were applied on a case-by-case basis. The estimation is made at product per enterprise level, either on the basis of the annual rate of change in the turnover of the enterprise producing the product, or on the basis of the average annual rate of change in the quantity produced by the other enterprises, for which data were collected during the reference month (ratio imputation).</p> <p>For June 2020 there was no significant change in the data collection compared to previous reference months.</p>  |
| <b>Seasonal adjustment</b>  | <p>Seasonal adjustment is the procedure followed to remove the impact of seasonality on the time-series (i.e. the impact of monthly effects, e.g. holidays, tourist period etc.), in order to improve comparability over time. The method applied is TRAMO-SEATS with the use of JDemetra+ 2.0.0.</p> <p>For the seasonal adjustment of the Industrial Production Index at 2-digit level of NACE Rev.2, at section level (B – Mining and Quarrying, C – Manufacturing, D – Electricity and E – Water Supply) and for the Main Industrial Groupings (MIGs), the direct approach is applied, namely each time-series is seasonally adjusted independently. For the overall Industrial Production Index, the indirect approach is applied, with the seasonally adjusted IPI being computed by aggregating the seasonally adjusted MIGs using appropriate weights.</p> |
| <b>Seasonal adjustment in the context of the COVID-19 pandemic</b>                        | <p>The COVID-19 outbreak has a sever impact on several economic activities. Given the fact that, calendar and seasonal adjustment corresponds to predictable and recurrent phenomena, the impact of COVID-19 pandemic, as an extraordinary phenomenon, shall not be included in the calendar or seasonal component of the time-series.</p> <p>According to the methodological recommendations and guidance of the European Statistical Service (Eurostat) on time-series treatment in the context of the COVID-19 pandemic, this impact is strongly suggested to be treated as outlier and be included in the trend-cycle component or in the irregular,</p>   |

depending on the type of outlier.

During the seasonal adjustment of time-series for June 2020, outliers were determined (additive outliers or transitory changes) in cases where it was deemed appropriate, based on statistical criteria and economic information. For a small number of time-series, the type of outliers for May 2020 changed (from additive outlier to transitory change), due to the incorporation of the new observations of June 2020. As new observations become available and are added in the time-series, the type of outliers may change (from additive outlier to a transitory change or a level shift), depending on the evolution of the phenomenon, which may result in significant revisions, only to the already published seasonally adjusted data (Tables 4 and 6).

**Publication of data** The revised IPI with the new base year 2015 (2015=100.0) is released since July 2019, with May 2019 as the first reference month. Data with base year 2015=100.0 are available from January 2000 onwards.

**References** More information about the methodology concerning the compilation and calculation of the index and for the time series is available on the website of the Hellenic Statistical Authority (ELSTAT) (<http://www.statistics.gr/en/statistics/-/publication/DKT21/->).