



PRESS RELEASE

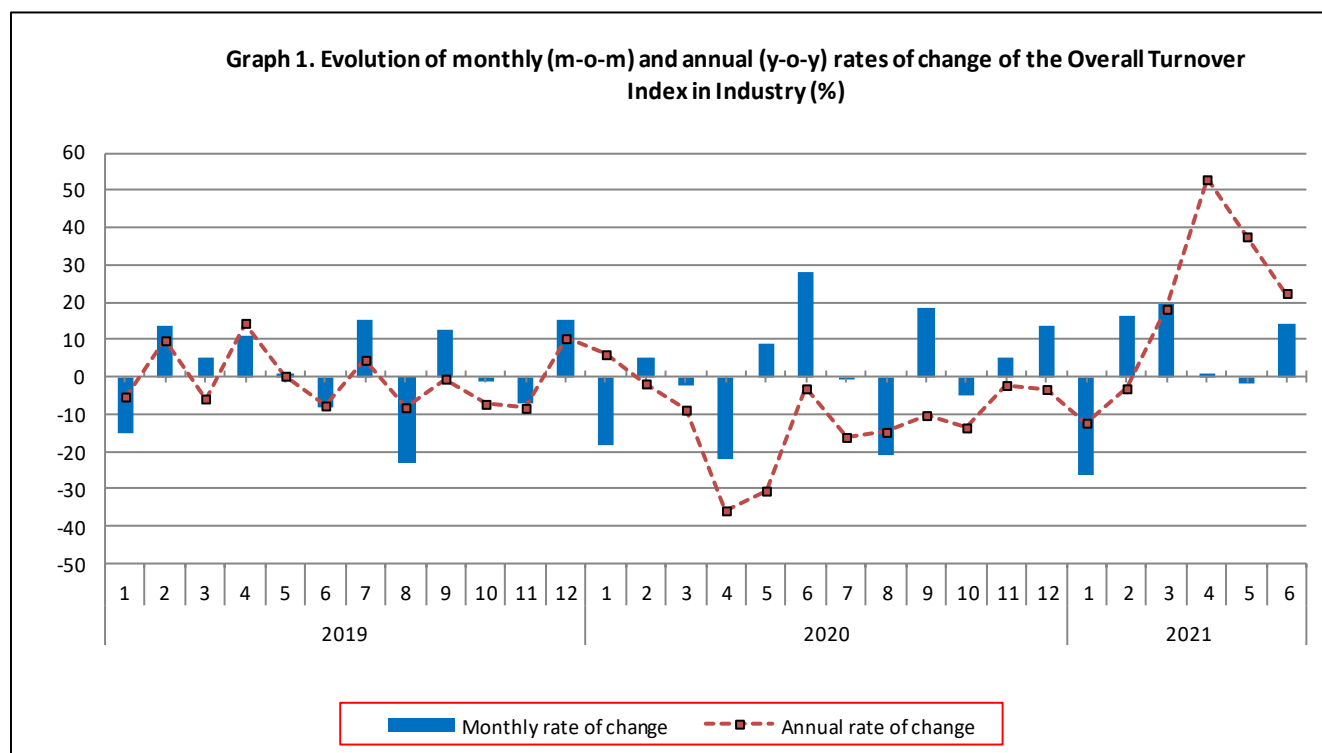
TURNOVER INDEX IN INDUSTRY: June 2021, y-o-y increase of 22.4%

The Hellenic Statistical Authority announces the Turnover Index in Industry with base year 2015=100.0 for June 2021, the evolution of which on the basis of provisional data, is as follows:

The Overall Turnover Index in Industry (both Domestic and Non-Domestic Market) in June 2021 recorded an increase of 22.4% compared with the corresponding index of June 2020. The Overall Turnover Index in Industry in June 2020 decreased by 3.1% compared with the corresponding index in June 2019 (Table 1).

The Overall Turnover Index in Industry in June 2021, compared with May 2021, recorded an increase of 13.9% (Table 6).

The average Overall Turnover Index in Industry for the 12-month period from July 2020 to June 2021 increased by 2.6%, compared with the corresponding index of the 12-month period from July 2019 to June 2020. The average Overall Turnover Index in Industry for the 12-month period from July 2019 to June 2020 decreased by 7.5% compared with the corresponding index of the 12-month period from July 2018 to June 2019 (Table 13).



Information for methodological issues:

Division of Business Statistics
Section of Manufacture-Construction Indices and Industrial Products
Head of the Section : Diamantaki Aikaterini
Tel: +30 213 135 2056
E-mail: a.diamantaki@statistics.gr

Information for data provision:

Tel: +30 213 135 2022, 2308, 2310
E-mail: data.dissem@statistics.gr

Evolution of the Overall Turnover Index in Industry in June 2021

I. Annual changes of the Overall Turnover Index in Industry: June 2021/ June 2020

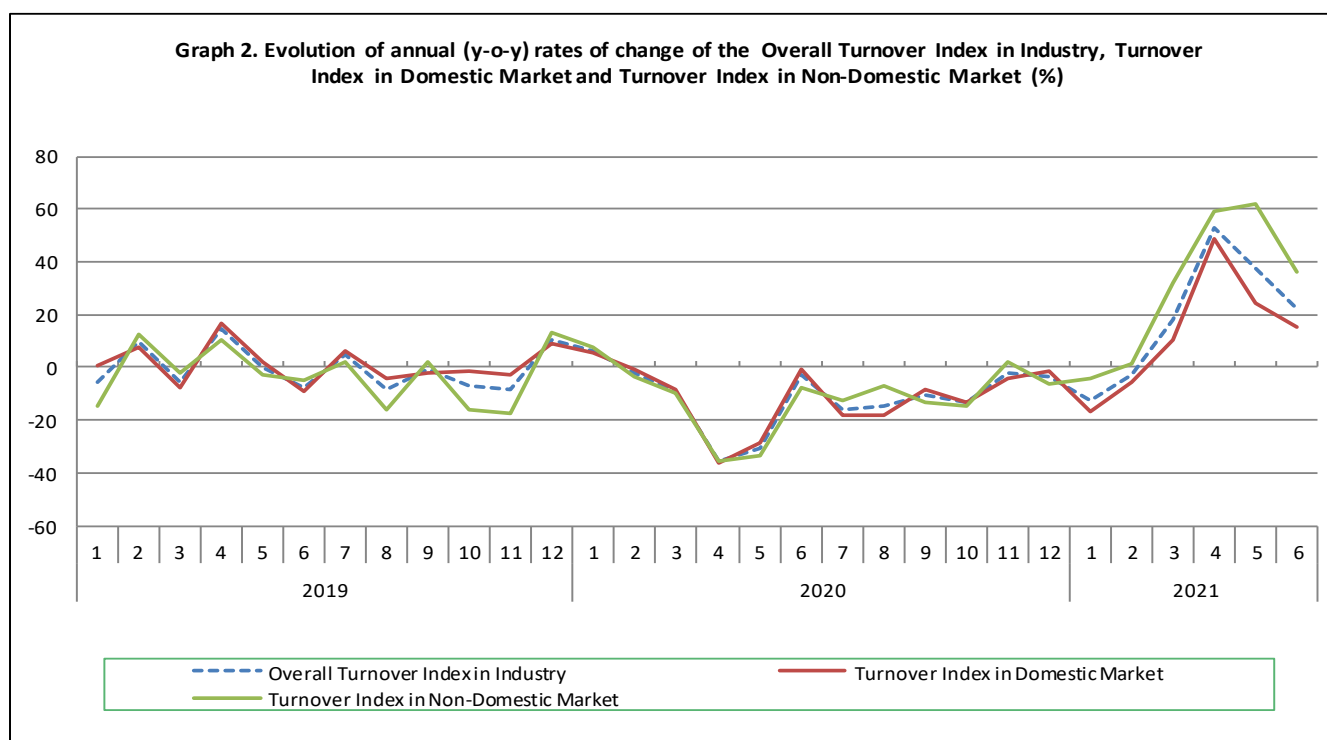
The 22.4% increase in the Overall Turnover Index in Industry in June 2021, compared with the corresponding index in June 2020, was due to the following:

1. Changes in the sub-indices of the industrial sections (Table 1):

- The Turnover Index in Manufacturing increased by 22.6%. The increase was mainly the result of the annual changes of the sub-indices in the following 2-digit divisions: basic metals, fabricated metal products, except machinery and equipment, coke and refined petroleum products, food.
- The Turnover Index in Mining and quarrying increased by 9.2%. The increase was the result of the annual changes of the sub-indices in the following 2-digit divisions: mining of coal and lignite - extraction of crude petroleum and natural gas - mining support service activities, other mining and quarrying products.

2. Changes in the sub-indices in Domestic and Non-Domestic Markets:

- The Turnover Index in Industry in Non-Domestic Market increased by 36.0% (Table 3).
- The Turnover Index in Industry in Domestic Market increased by 15.4% (Table 2).



II. Annual changes of the Turnover Index in Industry in Domestic Market: June 2021/ June 2020

The 15.4% increase of the Turnover Index in Industry in Domestic Market in June 2021, compared with June 2020, is due to the annual changes in the sub-indices of the following industrial sections (Table 2):

- The Turnover Index in Manufacturing increased by 15.5%. The increase was mainly the result of the annual changes of the sub-indices in the following 2-digit divisions: basic metals, fabricated metal products, except machinery and equipment, electrical equipment, food.
- The Turnover Index in Mining and quarrying increased by 12.0%. The increase was the result of the annual changes of the sub-indices in the following 2-digit divisions: mining of coal and lignite - extraction of crude petroleum and natural gas - mining support service activities, other mining and quarrying products.

III. Annual changes of the Turnover Index in Industry in Non-Domestic Market: June 2021/ June 2020

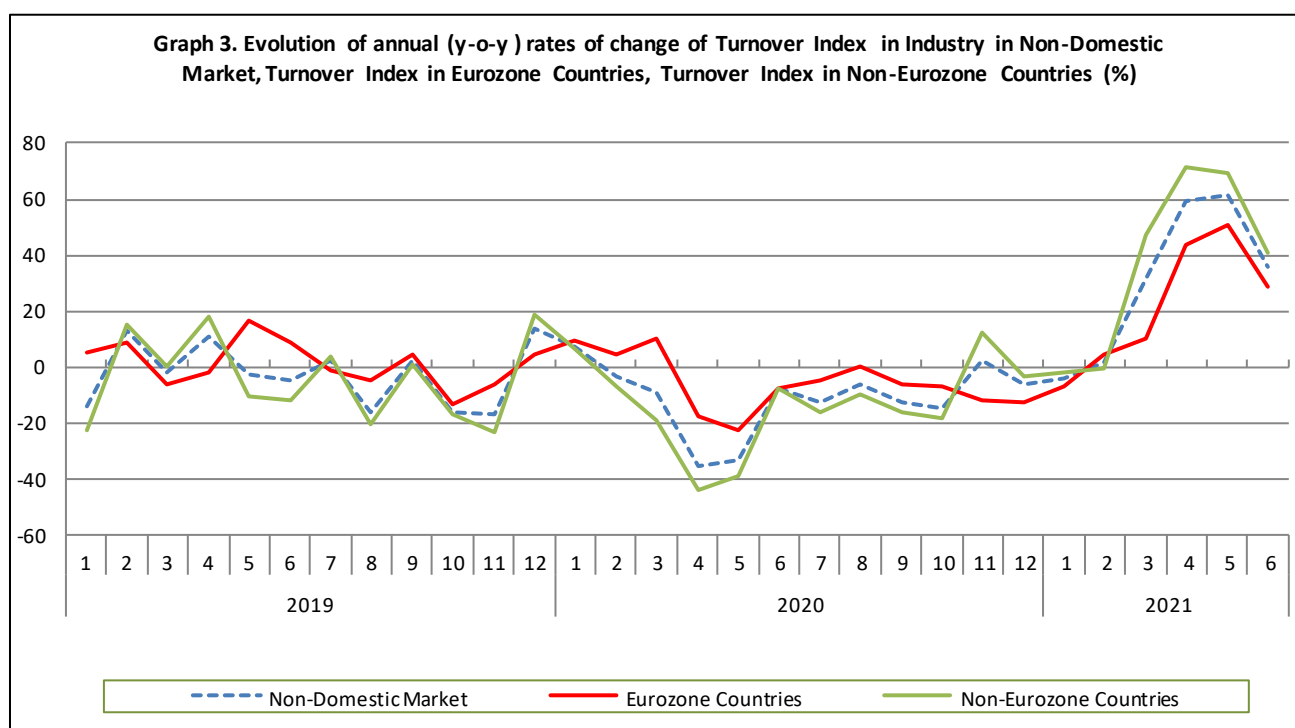
The 36.0% increase of the Turnover Index in Industry in Non-Domestic Market in June 2021, compared with June 2020, was due to the following:

1. Changes in the sub-indices of the industrial sections (Table 3):

- The Turnover Index in Manufacturing increased by 36.7%. The increase was mainly the result of the annual changes of the sub-indices in the following 2-digit divisions: electrical equipment, coke and refined petroleum products, other non-metallic mineral products, basic metals.
- The Turnover Index in Mining and quarrying increased by 7.5%. The increase was the result of the annual changes of the sub-indices in the following 2-digit divisions: mining of metal ores, other mining and quarrying products.

2. Changes in the sub-indices in Eurozone and Non-Eurozone countries:

- The Turnover Index in Industry in Non-Eurozone countries increased by 40.8% (Table 5).
- The Turnover Index in Industry in Eurozone countries increased by 28.6% (Table 4).



IV. Monthly changes of the Overall Turnover Index in Industry: June 2021/ May 2021

The 13.9% increase of the Overall Turnover Index in Industry in June 2021, compared with the corresponding index in May 2021, was due to the following:

1. Changes in the sub-indices of industrial sections (Table 6):

- The Turnover Index in Mining and quarrying increased by 20.9%.
- The Turnover Index in Manufacturing increased by 13.9%.

2. Changes in the sub-indices in Domestic and Non-Domestic Market:

- The Turnover Index in Industry in Domestic Market increased by 20.4% (Table 7).
- The Turnover Index in Industry in Non-Domestic Market increased by 4.7% (Table 8).

Table 1. Annual rates of change of the Turnover Index in Industry: Total Market

Base year: 2015=100.0

Code		Division	Weights	June			Rate of change (%)	
				2021*	2020	2019	2021/2020	2020/2019
OVERALL INDEX				136.48	111.47	115.05	22.4	-3.1
B	MINING AND QUARRYING		100.00	116.41	106.65	146.10	9.2	-27.0
05-06-09	Mining of coal and lignite - Extraction of crude petroleum and natural gas - Mining support service activities		21.19	11.19	1.51	173.09	641.8	-99.1
07	Mining of metal ores		17.56	224.28	219.86	219.72	2.0	0.1
08	Other mining and quarrying products		61.25	121.88	110.56	115.65	10.2	-4.4
C	MANUFACTURING		100.00	136.75	111.53	114.63	22.6	-2.7
10	Food		23.39	113.81	98.79	101.17	15.2	-2.4
11	Beverages		3.57	152.45	129.53	167.12	17.7	-22.5
12	Tobacco products		1.19	206.76	179.87	162.53	15.0	10.7
13	Textiles		1.28	137.39	113.57	118.06	21.0	-3.8
14	Wearing apparel		1.80	82.09	64.35	83.22	27.6	-22.7
15	Leather and related products		0.34	66.85	52.97	56.73	26.2	-6.6
16	Wood and products of wood and cork, except furniture		0.72	130.40	105.39	115.59	23.7	-8.8
17	Paper and paper products		2.44	125.86	115.05	115.91	9.4	-0.7
18	Printing and reproduction of recorded products		1.17	113.37	94.68	101.15	19.7	-6.4
19	Coke and refined petroleum products		28.73	125.95	98.18	108.52	28.3	-9.5
20	Chemicals and chemical products		4.43	158.93	141.33	138.49	12.5	2.1
21	Basic pharmaceutical products and pharmaceutical preparations		3.67	190.43	180.50	122.52	5.5	47.3
22	Rubber and plastic products		3.47	147.81	126.63	113.84	16.7	11.2
23	Other non-metallic mineral products		3.31	136.41	112.17	111.70	21.6	0.4
24	Basic metals		7.19	161.76	119.05	133.96	35.9	-11.1
25	Fabricated metal products, except machinery and equipment		4.51	141.49	109.64	114.11	29.1	-3.9
26	Computers, electronic and optical products		0.78	195.12	154.92	171.43	26.0	-9.6
27	Electrical equipment		2.65	264.99	180.48	129.45	46.8	39.4
28	Machinery and equipment n.e.c.		1.56	135.59	107.50	122.42	26.1	-12.2
29	Motor vehicles, trailers and semi-trailers		0.23	120.95	108.86	121.84	11.1	-10.7
30	Other transport equipment		0.52	84.44	77.79	68.12	8.5	14.2
31	Furniture		0.97	161.86	133.32	139.04	21.4	-4.1
32	Other manufacturing		0.66	133.01	96.81	113.35	37.4	-14.6
33	Repair and installation of machinery and equipment		1.42	122.23	87.20	96.76	40.2	-9.9
MAIN INDUSTRIAL GROUPINGS								
1	Energy		28.57	125.08	97.43	109.27	28.4	-10.8
2	Intermediate goods		28.29	156.08	124.16	122.61	25.7	1.3
3	Capital goods		7.00	137.50	106.22	113.72	29.5	-6.6
4	Consumer Durables		1.86	143.32	116.11	122.17	23.4	-5.0
5	Consumer Non-Durables		34.28	129.21	113.51	113.50	13.8	0.0

* Provisional data

Note: The indices and the percentage changes are rounded up to two and one decimal digits, respectively, when published.

Table 2. Annual rates of change of the Turnover Index in Industry: Domestic Market

Base year: 2015=100.0

Code		Division	Weights	June			Rate of change (%)	
				2021*	2020	2019	2021/2020	2020/2019
OVERALL INDEX				127.92	110.82	111.35	15.4	-0.5
B	MINING AND QUARRYING		100.00	77.47	69.14	77.66	12.0	-11.0
05-06-09	Mining of coal and lignite - Extraction of crude petroleum and natural gas - Mining support service activities		31.66	13.23	1.78	52.09	641.8	-96.6
07	Mining of metal ores		12.83	84.84	115.95	103.73	-26.8	11.8
08	Other mining and quarrying products		55.50	112.40	96.74	86.23	16.2	12.2
C	MANUFACTURING		100.00	128.50	111.30	111.74	15.5	-0.4
10	Food		28.50	104.35	93.14	99.17	12.0	-6.1
11	Beverages		4.86	152.43	128.13	167.56	19.0	-23.5
12	Tobacco products		0.51	342.42	194.74	223.76	75.8	-13.0
13	Textiles		1.11	135.74	105.61	118.60	28.5	-11.0
14	Wearing apparel		1.77	82.39	63.80	78.71	29.1	-18.9
15	Leather and related products		0.41	72.43	56.97	56.54	27.1	0.8
16	Wood and products of wood and cork, except furniture		0.96	122.45	105.15	111.26	16.4	-5.5
17	Paper and paper products		3.12	121.91	110.32	112.39	10.5	-1.8
18	Printing and reproduction of recorded products		1.63	98.57	78.45	89.65	25.7	-12.5
19	Coke and refined petroleum products		24.90	105.02	103.14	106.68	1.8	-3.3
20	Chemicals and chemical products		4.90	160.91	147.24	145.71	9.3	1.0
21	Basic pharmaceutical products and pharmaceutical preparations		3.85	174.66	154.32	104.09	13.2	48.3
22	Rubber and plastic products		3.31	148.39	129.69	115.33	14.4	12.5
23	Other non-metallic mineral products		3.31	139.56	122.16	113.46	14.2	7.7
24	Basic metals		3.49	210.89	139.82	139.57	50.8	0.2
25	Fabricated metal products, except machinery and equipment		4.25	163.89	123.45	119.19	32.8	3.6
26	Computers, electronic and optical products		0.40	105.93	163.58	147.36	-35.2	11.0
27	Electrical equipment		2.24	271.66	213.54	104.04	27.2	105.2
28	Machinery and equipment n.e.c.		1.46	149.27	107.18	119.92	39.3	-10.6
29	Motor vehicles, trailers and semi-trailers		0.27	123.77	118.48	125.78	4.5	-5.8
30	Other transport equipment		0.58	67.30	65.09	58.02	3.4	12.2
31	Furniture		1.35	153.04	124.25	127.20	23.2	-2.3
32	Other manufacturing		0.88	126.05	92.05	112.63	36.9	-18.3
33	Repair and installation of machinery and equipment		1.92	130.75	91.15	99.54	43.4	-8.4
MAIN INDUSTRIAL GROUPINGS								
1	Energy		24.89	104.07	102.04	106.08	2.0	-3.8
2	Intermediate goods		25.73	157.02	130.56	117.39	20.3	11.2
3	Capital goods		7.19	145.76	110.38	112.82	32.1	-2.2
4	Consumer Durables		2.31	135.10	110.13	119.70	22.7	-8.0
5	Consumer Non-Durables		39.88	120.39	103.68	109.99	16.1	-5.7

* Provisional data

Note: The indices and the percentage changes are rounded up to two and one decimal digits, respectively, when published.

Table 3. Annual rates of change of the Turnover Index in Industry: Non-Domestic Market

Base year: 2015=100.0

Code	Division	Weights	June			Rate of change (%)	
			2021*	2020	2019	2021/2020	2020/2019
OVERALL INDEX			153.34	112.74	122.33	36.0	-7.8
B	MINING AND QUARRYING	100.00	167.23	155.59	235.40	7.5	-33.9
05-06-09	Mining of coal and lignite - Extraction of crude petroleum and natural gas - Mining support service activities	7.53	0.00	0.00	837.32	-	-100.0
07	Mining of metal ores	23.74	322.68	293.18	301.57	10.1	-2.8
08	Other mining and quarrying products	68.74	131.86	125.12	146.65	5.4	-14.7
C	MANUFACTURING	100.00	153.10	111.99	120.35	36.7	-6.9
10	Food	13.27	154.07	122.83	109.71	25.4	12.0
11	Beverages	1.01	152.64	142.89	162.86	6.8	-12.3
12	Tobacco products	2.53	152.06	173.87	137.84	-12.5	26.1
13	Textiles	1.61	139.66	124.50	117.33	12.2	6.1
14	Wearing apparel	1.86	81.53	65.38	91.71	24.7	-28.7
15	Leather and related products	0.19	42.87	35.80	57.58	19.8	-37.8
16	Wood and products of wood and cork, except furniture	0.24	193.47	107.32	149.99	80.3	-28.4
17	Paper and paper products	1.11	147.84	141.40	135.48	4.6	4.4
18	Printing and reproduction of recorded products	0.26	297.74	296.86	244.39	0.3	21.5
19	Coke and refined petroleum products	36.32	154.40	91.45	111.01	68.8	-17.6
20	Chemicals and chemical products	3.50	153.44	124.99	118.49	22.8	5.5
21	Basic pharmaceutical products and pharmaceutical preparations	3.30	226.87	241.01	165.08	-5.9	46.0
22	Rubber and plastic products	3.79	146.81	121.33	111.26	21.0	9.0
23	Other non-metallic mineral products	3.31	130.16	92.37	108.21	40.9	-14.6
24	Basic metals	14.54	138.40	109.18	131.30	26.8	-16.8
25	Fabricated metal products, except machinery and equipment	5.03	103.97	86.50	105.61	20.2	-18.1
26	Computers, electronic and optical products	1.52	241.54	150.41	183.96	60.6	-18.2
27	Electrical equipment	3.44	256.36	137.77	162.28	86.1	-15.1
28	Machinery and equipment n.e.c.	1.76	113.11	108.02	126.53	4.7	-14.6
29	Motor vehicles, trailers and semi-trailers	0.14	109.95	71.42	106.52	54.0	-33.0
30	Other transport equipment	0.40	133.28	113.98	96.91	16.9	17.6
31	Furniture	0.21	274.23	248.83	289.94	10.2	-14.2
32	Other manufacturing	0.22	187.00	133.75	118.97	39.8	12.4
33	Repair and installation of machinery and equipment	0.43	47.38	52.51	72.37	-9.8	-27.4
MAIN INDUSTRIAL GROUPINGS							
1	Energy	35.82	153.84	91.12	113.64	68.8	-19.8
2	Intermediate goods	33.33	154.66	114.41	130.55	35.2	-12.4
3	Capital goods	6.62	119.85	97.32	115.67	23.2	-15.9
4	Consumer Durables	0.98	181.61	143.95	133.63	26.2	7.7
5	Consumer Non-Durables	23.25	159.03	146.76	125.36	8.4	17.1

* Provisional data

Note: The indices and the percentage changes are rounded up to two and one decimal digits, respectively, when published.

Table 4. Annual rates of change of the Turnover Index in Industry: Eurozone Countries

Base year: 2015=100.0

Code		Sections and main groupings		Base year 2019 = 100%		
				2021*	June 2020	2019
		2021*	2020	2019	2021/2020	2020/2019
OVERALL INDEX		163.68	127.26	137.91	28.6	-7.7
INDUSTRIAL SECTIONS						
B	MINING AND QUARRYING	158.76	110.64	283.41	43.5	-61.0
C	MANUFACTURING	163.78	127.60	134.99	28.4	-5.5
MAIN INDUSTRIAL GROUPINGS						
1	Energy	130.66	80.42	127.35	62.5	-36.8
2	Intermediate goods	165.42	121.67	138.36	36.0	-12.1
3	Capital goods	147.33	132.97	158.94	10.8	-16.3
4	Consumer Durables	296.70	249.28	181.26	19.0	37.5
5	Consumer Non-Durables	182.52	161.32	140.17	13.1	15.1

* Provisional data

Table 5. Annual rates of change of the Turnover Index in Industry: Non-Eurozone Countries

Base year: 2015=100.0

CodeSections and main groupings		June			Rate of change (%)	
		2021*	2020	2019	2021/2020	2020/2019
OVERALL INDEX		147.85	105.03	114.05	40.8	-7.9
INDUSTRIAL SECTIONS						
B	MINING AND QUARRYING	172.79	185.10	203.89	-6.7	-9.2
C	MANUFACTURING	147.44	103.73	112.60	42.1	-7.9
MAIN INDUSTRIAL GROUPINGS						
1	Energy	160.52	94.20	109.69	70.4	-14.1
2	Intermediate goods	147.65	109.68	125.46	34.6	-12.6
3	Capital goods	110.54	85.23	101.00	29.7	-15.6
4	Consumer Durables	102.14	71.22	100.73	43.4	-29.3
5	Consumer Non-Durables	136.18	132.59	110.94	2.7	19.5

* Provisional data

Note: The indices and the percentage changes are rounded up to two and one decimal digits, respectively, when published.

Table 6. Monthly rate of change of the Turnover Index in Industry: Total Market

Base year: 2015=100.0

Code	Sections and main groupings	June 2021*	May 2021**	Rate of change (%) June 2021/ May 2021
OVERALL INDEX		136.48	119.78	13.9
INDUSTRIAL SECTIONS				
B	MINING AND QUARRYING	116.41	96.27	20.9
C	MANUFACTURING	136.75	120.10	13.9
MAIN INDUSTRIAL GROUPINGS				
1	Energy	125.08	104.53	19.7
2	Intermediate goods	156.08	137.27	13.7
3	Capital goods	137.50	117.45	17.1
4	Consumer Durables	143.32	123.88	15.7
5	Consumer Non-Durables	129.21	118.31	9.2

Table 7. Monthly rate of change of the Turnover Index in Industry: Domestic Market

Base year: 2015=100.0

Code	Sections and main groupings	June 2021*	May 2021**	Rate of change (%) June 2021/ May 2021
OVERALL INDEX		127.92	106.27	20.4
INDUSTRIAL SECTIONS				
B	MINING AND QUARRYING	77.47	68.80	12.6
C	MANUFACTURING	128.50	106.71	20.4
MAIN INDUSTRIAL GROUPINGS				
1	Energy	104.07	61.44	69.4
2	Intermediate goods	157.02	137.57	14.1
3	Capital goods	145.76	121.54	19.9
4	Consumer Durables	135.10	110.41	22.4
5	Consumer Non-Durables	120.39	111.07	8.4

Table 8. Monthly rate of change of the Turnover Index in Industry: Non-Domestic Market

Base year: 2015=100.0

Code	Sections and main groupings	June 2021*	May 2021**	Rate of change (%) June 2021/ May 2021
OVERALL INDEX		153.34	146.39	4.7
INDUSTRIAL SECTIONS				
B	MINING AND QUARRYING	167.23	132.11	26.6
C	MANUFACTURING	153.10	146.64	4.4
MAIN INDUSTRIAL GROUPINGS				
1	Energy	153.84	163.51	-5.9
2	Intermediate goods	154.66	136.82	13.0
3	Capital goods	119.85	108.70	10.3
4	Consumer Durables	181.61	186.62	-2.7
5	Consumer Non-Durables	159.03	142.78	11.4

* Provisional data ** Revised data

Note: The indices and the percentage changes are rounded up to two and one decimal digits, respectively, when published.

Table 9. Monthly rate of change of the Turnover Index in Industry: Eurozone Countries

Base year: 2015=100.0

Code	Sections and main groupings	June 2021*	May 2021**	Rate of change (%) June 2021/ May 2021
OVERALL INDEX		163.68	160.21	2.2
INDUSTRIAL SECTIONS				
B	MINING AND QUARRYING	158.76	164.87	-3.7
C	MANUFACTURING	163.78	160.11	2.3
MAIN INDUSTRIAL GROUPINGS				
1	Energy	130.66	180.82	-27.7
2	Intermediate goods	165.42	145.45	13.7
3	Capital goods	147.33	148.05	-0.5
4	Consumer Durables	296.70	228.16	30.0
5	Consumer Non-Durables	182.52	162.15	12.6

* Provisional data ** Revised data

Table 10. Monthly rate of change of the Turnover Index in Industry: Non-Eurozone Countries

Base year: 2015=100.0

Code	Sections and main groupings	June 2021*	May 2021**	Rate of change (%) June 2021/ May 2021
OVERALL INDEX		147.85	139.04	6.3
INDUSTRIAL SECTIONS				
B	MINING AND QUARRYING	172.79	110.61	56.2
C	MANUFACTURING	147.44	139.50	5.7
MAIN INDUSTRIAL GROUPINGS				
1	Energy	160.52	158.52	1.3
2	Intermediate goods	147.65	131.19	12.5
3	Capital goods	110.54	95.36	15.9
4	Consumer Durables	102.14	157.94	-35.3
5	Consumer Non-Durables	136.18	123.94	9.9

* Provisional data ** Revised data

Note: The indices and the percentage changes are rounded up to two and one decimal digits, respectively, when published.

Table 11. Evolution of the Turnover Index in Industry (y-o-y changes): Total Market

Base year: 2015=100.0

Year and month	Overall Index (Total Market)		Turnover Index in Industry in Domestic Market		Turnover Index in Industry in Non-Domestic Market	
	Index	Annual rate of change (%)	Index	Annual rate of change (%)	Index	Annual rate of change (%)
2020**: 6	111.47	-3.1	110.82	-0.5	112.74	-7.8
7	111.12	-16.1	108.20	-17.8	116.86	-12.9
8	87.57	-14.8	86.73	-18.4	89.22	-6.7
9	103.61	-10.3	100.95	-8.6	108.87	-13.2
10	98.38	-13.6	96.83	-13.0	101.44	-14.6
11	103.58	-2.2	99.60	-4.5	111.43	2.1
12	117.95	-3.3	115.81	-1.6	122.18	-6.3
2021*: 1	87.12	-12.3	80.80	-16.7	99.56	-4.3
2	101.29	-3.1	92.96	-5.6	117.69	1.1
3	120.83	18.2	107.17	10.3	147.74	31.8
4	121.99	52.9	111.32	48.9	143.02	59.4
5	119.78	37.6	106.27	24.6	146.39	61.7
6	136.48	22.4	127.92	15.4	153.34	36.0

*Provisional data ** Final data

Table 12. Evolution of the Turnover Index in Industry (y-o-y changes): Non-Domestic Market

Base year: 2015=100.0

Year and month	Overall Index (Non-Domestic Market)		Turnover Index in Industry in Eurozone Countries		Turnover Index in Industry in Non-Eurozone Countries	
	Index	Annual rate of change (%)	Index	Annual rate of change (%)	Index	Annual rate of change (%)
2020**: 6	112.74	-7.8	127.26	-7.7	105.03	-7.9
7	116.86	-12.9	121.46	-5.3	114.41	-16.6
8	89.22	-6.7	91.69	0.0	87.91	-10.1
9	108.87	-13.2	112.74	-6.7	106.81	-16.5
10	101.44	-14.6	106.35	-6.9	98.82	-18.5
11	111.43	2.1	113.15	-12.2	110.51	12.0
12	122.18	-6.3	108.01	-12.5	129.71	-3.3
2021*: 1	99.56	-4.3	108.27	-7.3	94.93	-2.3
2	117.69	1.1	129.18	4.3	111.58	-0.7
3	147.74	31.8	146.57	9.8	148.37	47.2
4	143.02	59.4	155.67	43.3	136.30	71.1
5	146.39	61.7	160.21	51.0	139.04	69.0
6	153.34	36.0	163.68	28.6	147.85	40.8

*Provisional data ** Final data

Note: The indices and the percentage changes are rounded up to two and one decimal digits, respectively, when published.

Table 13. Average indices and rates of change (%) of the 12-month periods of Turnover Index in Industry: Total Market
Base year: 2015=100.0

Code		Division	Average Indices of 12-month periods			Rate of change (%)	
			July 2020- June 2021*	July 2019- June 2020	July 2018- June 2019	2021/2020	2020/2019
OVERALL INDEX			109.14	106.41	115.04	2.6	-7.5
B	MINING AND QUARRYING		103.68	98.66	110.52	5.1	-10.7
05-06-09	Mining of coal and lignite - Extraction of crude petroleum and natural gas - Mining support service activities		32.43	43.61	111.76	-25.6	-61.0
07	Mining of metal ores		179.65	171.74	139.46	4.6	23.1
08	Other mining and quarrying products		106.55	96.74	101.78	10.1	-5.0
C	MANUFACTURING		109.22	106.52	115.11	2.5	-7.5
10	Food		106.27	103.75	102.38	2.4	1.3
11	Beverages		105.81	103.57	114.94	2.2	-9.9
12	Tobacco products		141.86	132.16	124.31	7.3	6.3
13	Textiles		109.27	99.09	105.08	10.3	-5.7
14	Wearing apparel		68.93	80.59	95.38	-14.5	-15.5
15	Leather and related products		54.97	74.01	87.13	-25.7	-15.1
16	Wood and products of wood and cork, except furniture		108.43	102.31	104.26	6.0	-1.9
17	Paper and paper products		112.80	114.81	113.36	-1.8	1.3
18	Printing and reproduction of recorded products		91.31	91.99	95.90	-0.7	-4.1
19	Coke and refined petroleum products		88.69	99.86	126.63	-11.2	-21.1
20	Chemicals and chemical products		126.57	117.56	115.64	7.7	1.7
21	Basic pharmaceutical products and pharmaceutical preparations		174.44	155.80	130.03	12.0	19.8
22	Rubber and plastic products		119.25	107.31	104.11	11.1	3.1
23	Other non-metallic mineral products		112.74	103.07	110.11	9.4	-6.4
24	Basic metals		135.69	117.68	136.68	15.3	-13.9
25	Fabricated metal products, except machinery and equipment		109.34	96.61	100.87	13.2	-4.2
26	Computers, electronic and optical products		172.86	166.21	140.55	4.0	18.3
27	Electrical equipment		165.97	127.75	121.81	29.9	4.9
28	Machinery and equipment n.e.c.		115.90	103.54	106.17	11.9	-2.5
29	Motor vehicles, trailers and semi-trailers		108.53	111.49	104.27	-2.7	6.9
30	Other transport equipment		73.07	57.68	70.28	26.7	-17.9
31	Furniture		113.49	103.22	112.97	10.0	-8.6
32	Other manufacturing		98.40	94.03	101.67	4.6	-7.5
33	Repair and installation of machinery and equipment		104.54	95.19	92.92	9.8	2.4
MAIN INDUSTRIAL GROUPINGS							
1	Energy		88.32	99.51	126.56	-11.2	-21.4
2	Intermediate goods		124.45	111.19	116.27	11.9	-4.4
3	Capital goods		113.39	102.29	102.03	10.8	0.3
4	Consumer Durables		108.56	98.43	103.95	10.3	-5.3
5	Consumer Non-Durables		113.03	109.49	107.69	3.2	1.7

*Provisional data

Note: The indices and the percentage changes are rounded up to two and one decimal digits, respectively, when published.

METHODOLOGICAL NOTES

Generally	The Industrial Turnover Index is an indicator of an enterprise's business cycle showing the monthly evolution of the market of goods and services in industry. The first compilation of the Turnover Index was completed by the Hellenic Statistical Authority in 2006, with base year 2000=100.0 and is compiled from 2000 onwards.
Purpose of the index	The purpose of this index is to measure the monthly activity of the industrial sector in terms of value. Turnover comprises the totals invoiced by the observation units during the reference period and corresponds to the market sales of goods or services supplied to third parties. The purposes and the characteristics of the Turnover Index apply, as well, to the indices for the distinction between domestic and non-domestic turnover.
Legal Framework	The compilation and publication of the Turnover Index is based on the framework of the implementation of Council Regulation (EC) No 1165/1998 concerning short-term statistics (STS-R), as well as Regulation (EC) No 1158/2005 of the European Parliament and of the Council amending Council Regulation (EC) No 1165/1998. Furthermore, this index is governed by Regulation (EC) No 1893/2006 of the European Parliament and of the Council, by Commission Regulation (EC) No 656/2007, by Regulation (EC) No 451/2008 of the Council, by Regulation (EU) No 2019/2152 of the European Parliament and of the Council on European business statistics, as well as Commission Implementing Regulation (EU) No 2020/1197 laying down technical specifications and arrangements pursuant to Regulation (EU) No 2019/2152.
Reference period	Month.
Base year	2015=100.0.
Revision	The latest revision of the Turnover Index in Industry (base year 2015=100.0) took place in the framework of Council Regulation (EC) No 1165/1998 concerning short-term statistics. In accordance with this regulation the index is revised every five years, in years ending in 0 or 5.
Statistical classifications	At the level of classes of economic activities, the statistical classification of economic activities NACE Rev. 2 of EU was used (Regulation No 1893/2006), while at the level of main industrial groupings, the allocation of two-digit and three-digit NACE Rev. 2 headings to categories of aggregate classification was used, in accordance with Commission Regulation No 656/2007.
Geographical coverage	The index covers the whole Country.
Coverage of economic activities	The Turnover Index in Industry is compiled for all activities listed in Sections B (mining and quarrying) and C (manufacturing) of the NACE Rev. 2 statistical classification.
Computation of the Index	The Turnover Index in Industry is a fixed base index. This index is calculated at a first stage at the four-digit level of economic activity and subsequently, with the implementation of appropriate weighting coefficients, the index is calculated at higher levels (three-level and two-level of economic activity) as well as at the level of Main Industrial Groupings (MIGs).
Data collection and processing in the context of the COVID-19 pandemic	The compilation of the indices was mainly based on data collected by the enterprises (via web-based application, email), as well as data from administrative sources. For June 2021 there was no significant change in the data collection compared to previous reference months.
Publication of data	The Turnover Index in Industry (2015=100.0) is released since August 2019 with June 2019 as first reference month. Data with base year 2015=100.0 are available from January 2000 onwards.
References	More information about the methodology concerning the compilation and calculation of the index and for the time series is available on the website of the Hellenic Statistical Authority (ELSTAT) (http://www.statistics.gr/en/statistics/-/publication/DKT24/).