

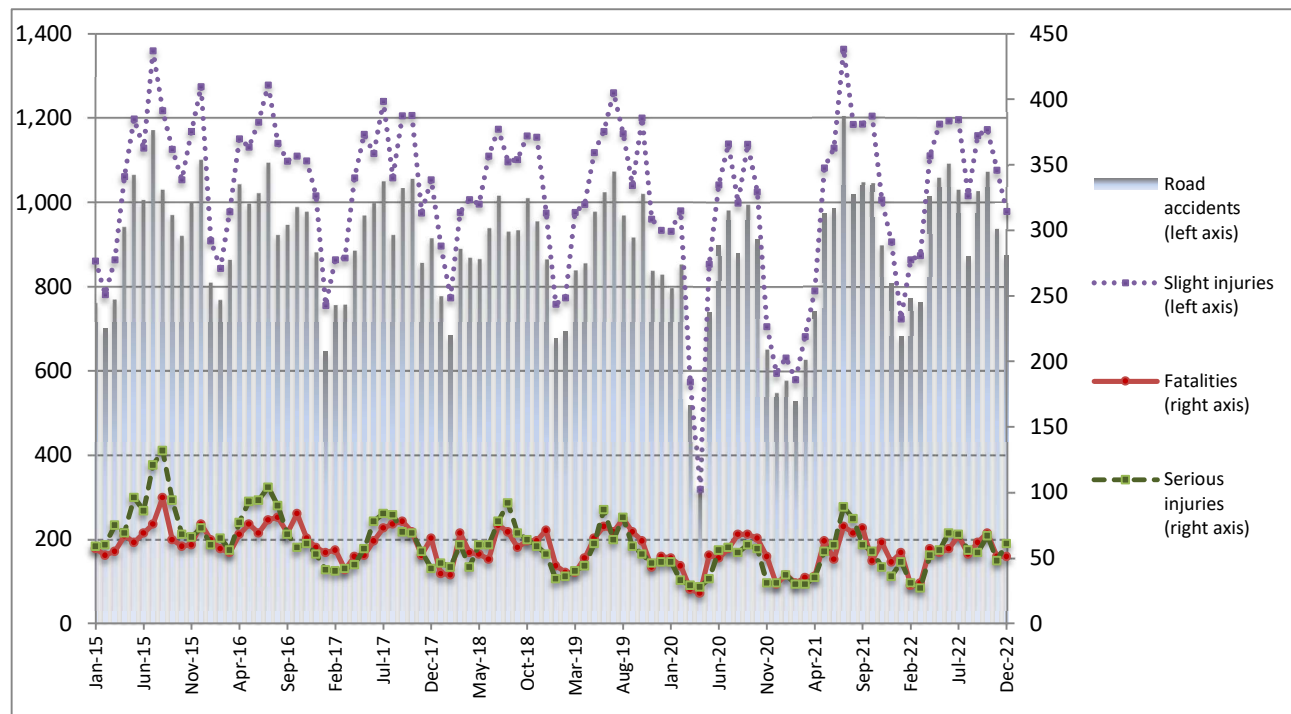


ROAD TRAFFIC ACCIDENTS: December 2022

The Hellenic Statistical Authority (ELSTAT) announces provisional¹ data from the survey on “Road Traffic Accidents” for December 2022. In particular, the road traffic accidents which occurred in Greece, resulting in death or injury, increased by 8.4% in comparison with the corresponding month of 2021 (875 road accidents in December 2022, against 807 road accidents in December 2021).

The casualties of the injury-causing accidents that occurred in December 2022 were as follows: 51 deaths, 61 serious injuries and 979 slight injuries. In contrast, in December 2021 the corresponding figures were: 47 deaths, 36 serious injuries and 907 slight injuries. Therefore, road traffic accident casualties in December 2022 increased by 8.5% for deaths, by 69.4% for serious injuries and by 7.9% for slight injuries.

**Graph 1: Road traffic accidents and casualties,
January 2015 - December 2022**



Provisional data for the period January 2022 – December 2022

Information on methodological issues:

Sectoral Statistics Division
Transport Statistics Section
L. Miliara
Tel: +30 213 135 3095
e-mail: l.miliara@statistics.gr

Information for data provision:

Tel: +30 213 135 2022, 2308, 2310
e-mail: data.dissem@statistics.gr

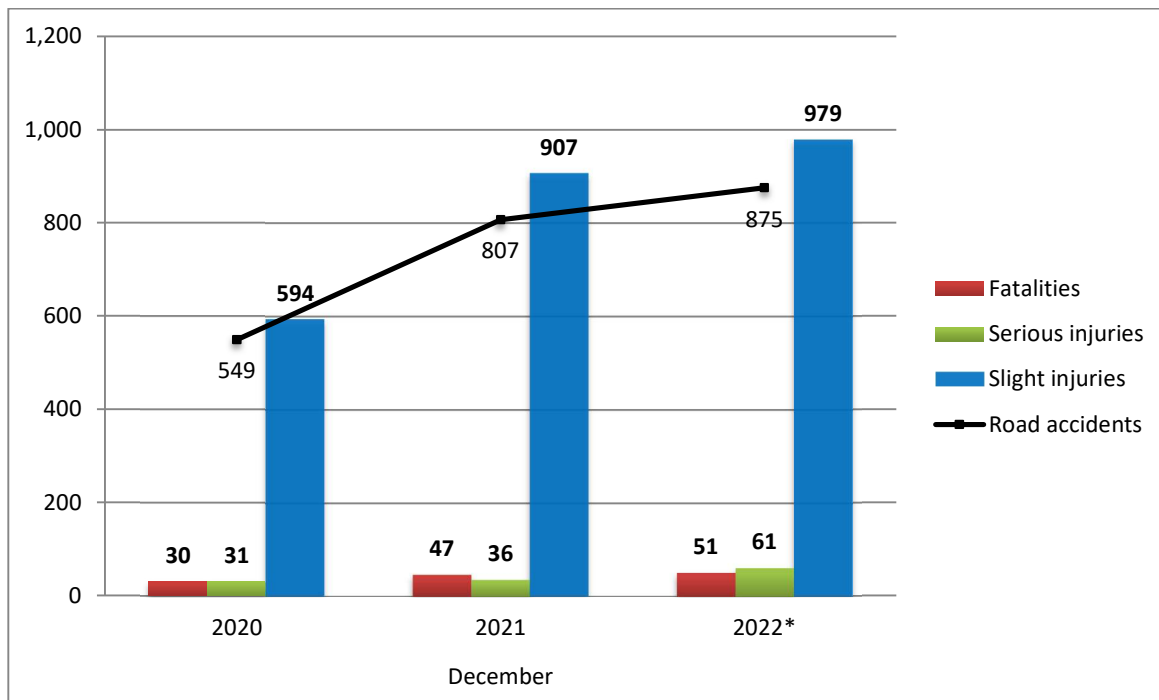
^[1] Data for the reference year is provisional until the finalization of the annual data, which takes place 10 months after the end of the reference year and is published in the corresponding announcement of the following year. During these 10 months the provisional data is updated on the basis of the data of the Road Accident Forms of that year which is transmitted to ELSTAT by Police Authorities (see explanatory notes).

Table 1: Road traffic accidents and casualties, December 2020 - 2022*

	December				
	2020	2021	2021/2020 (%)	2022*	2022*/2021 (%)
Road accidents	549	807	<i>47.0</i>	875	<i>8.4</i>
Fatalities	30	47	<i>56.7</i>	51	<i>8.5</i>
Total injuries	625	943	<i>50.9</i>	1,040	<i>10.3</i>
Serious injuries	31	36	<i>16.1</i>	61	<i>69.4</i>
Slight injuries	594	907	<i>52.7</i>	979	<i>7.9</i>

* Provisional data

Graph 2: Road traffic accidents and casualties, December 2020 - 2022*



* Provisional data

Table 2: Road traffic accidents and casualties, by region and department, December 2021 and 2022*

Region and department	Road accidents			Fatalities			Serious injuries			Slight injuries		
	2021	2022*	%	2021	2022*	%	2021	2022*	%	2021	2022*	%
Greece Total	807	875	8.4	47	51	8.5	36	61	69.4	907	979	7.9
Anatoliki Makedonia and Thraki (East Macedonia and Thrace)	16	24	50.0	2	3	50.0	0	3	-	22	29	31.8
Drama	2	9	350.0	0	1		0	1		3	8	
Evros	4	7	75.0	0	0		0	0		6	9	
Kavala	4	1	-75.0	1	0		0	0		3	1	
Xanthi	3	6	100.0	0	2		0	2		6	8	
Rodopi	3	1	-66.7	1	0		0	0		4	3	
Kentriki Makedonia (Central Macedonia)	150	140	-6.7	5	7	40.0	0	12	-	176	153	-13.1
Imathia	5	3	-40.0	1	0		0	1		9	4	
Thessaloniki	129	118	-8.5	1	3		0	9		153	134	
Kilkis	1	5	400.0	0	0		0	0		1	5	
Pella	5	2	-60.0	0	1		0	1		6	0	
Pieria	3	3	0.0	1	2		0	0		2	1	
Serres	2	5	150.0	0	1		0	1		2	4	
Chalkidiki	5	4	-20.0	2	0		0	0		3	5	
Dytiki Makedonia (West Macedonia)	3	4	33.3	0	0	-	0	0	-	3	9	200.0
Grevena	0	0	-	0	0		0	0		0	0	
Kastoria	2	2	0.0	0	0		0	0		2	2	
Kozani	1	2	100.0	0	0		0	0		1	7	
Florina	0	0	-	0	0		0	0		0	0	
Ipeiros (Epirus)	10	11	10.0	3	1	-66.7	0	2	-	10	14	40.0
Arta	0	1	-	0	1		0	0		0	0	
Thesprotia	4	3	-25.0	1	0		0	1		3	2	
Ioannina	4	6	50.0	1	0		0	1		5	11	
Preveza	2	1	-50.0	1	0		0	0		2	1	
Thessalia (Thessaly)	16	20	25.0	3	4	33.3	1	4	300.0	18	21	16.7
Karditsa	4	3	-25.0	2	1		0	0		4	5	
Larissa	4	5	25.0	0	1		0	2		6	5	
Magnissia	7	6	-14.3	1	2		1	2		7	3	
Trikala	1	6	500.0	0	0		0	0		1	8	
Ionian Nisia (Ionian Islands)	7	6	-14.3	0	3	-	0	2	-	9	3	-66.7
Zakynthos	1	4	300.0	0	1		0	2		1	2	
Kerkyra	4	0	-100.0	0	0		0	0		4	0	
Kefallinia	1	1	0.0	0	2		0	0		2	0	
Lefkada	1	1	0.0	0	0		0	0		2	1	

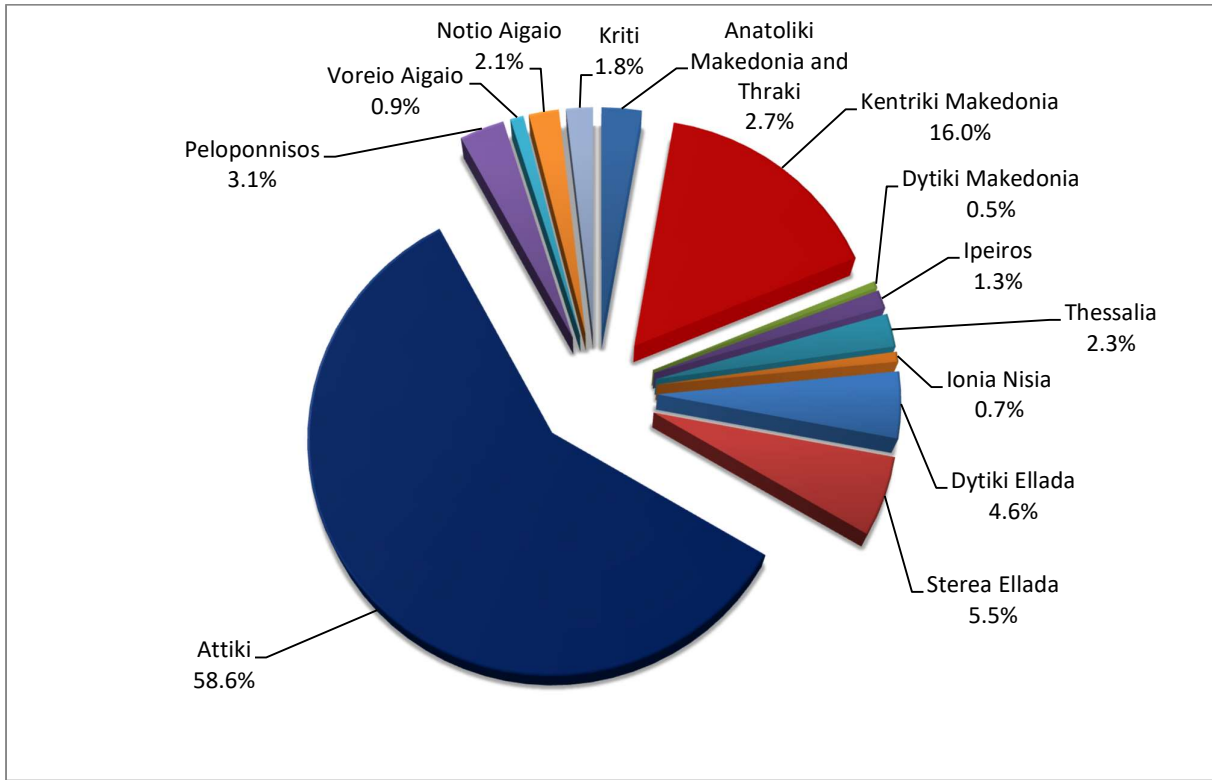
* Provisional data

Table 2: Road traffic accidents and casualties, by region and department, December 2021 and 2022* (Continued)

Region and department	Road accidents			Fatalities			Serious injuries			Slight injuries		
	2021	2022*	%	2021	2022*	%	2021	2022*	%	2021	2022*	%
Dytiki Ellada (West Greece)	38	40	5.3	4	4	0.0	4	5	25.0	45	42	-6.7
Etolia & Akarnania	11	16	45.5	0	1		0	2		19	20	
Achaia	20	15	-25.0	2	1		3	1		22	14	
Ilia	7	9	28.6	2	2		1	2		4	8	
Stereia Ellada	32	48	50.0	5	5	0.0	5	6	20.0	30	50	66.7
Viotia	6	9	50.0	2	0		2	2		4	10	
Evia	14	25	78.6	1	4		2	1		12	24	
Evrytania	0	0	-	0	0		0	0		0	0	
Fthiotida	11	8	-27.3	2	1		1	1		13	9	
Fokida	1	6	500.0	0	0		0	2		1	7	
Attiki (Attica)	485	513	5.8	16	13	-18.8	17	13	-23.5	552	592	7.2
Peloponnisos (Peloponnese)	21	27	28.6	6	7	16.7	2	2	0.0	17	25	47.1
Argolida	1	4	300.0	0	1		0	0		1	4	
Arkadia	4	7	75.0	1	2		0	0		3	8	
Korinthia	7	6	-14.3	3	1		1	1		6	6	
Lakonia	1	4	300.0	0	2		0	0		1	2	
Messinia	8	6	-25.0	2	1		1	1		6	5	
Voreio Aigaio (North Aegean)	7	8	14.3	0	1	-	1	2	100.0	8	8	0.0
Lesvos	4	7	75.0	0	1		1	2		3	7	
Samos	2	1	-50.0	0	0		0	0		4	1	
Chios	1	0	-100.0	0	0		0	0		1	0	
Notio Aigaio (South Aegean)	13	18	38.5	1	0	-100.0	6	2	-66.7	8	20	150.0
Dodekanissos	5	13	160.0	1	0		3	2		2	14	
Kyklades	8	5	-37.5	0	0		3	0		6	6	
Kriti (Crete)	9	16	77.8	2	3	50.0	0	8	-	9	13	44.4
Iraklio	4	9	125.0	0	2		0	6		5	8	
Lassithi	2	3	50.0	1	0		0	0		1	4	
Rethymno	3	1	-66.7	1	0		0	1		3	0	
Chania	0	3	-	0	1		0	1		0	1	

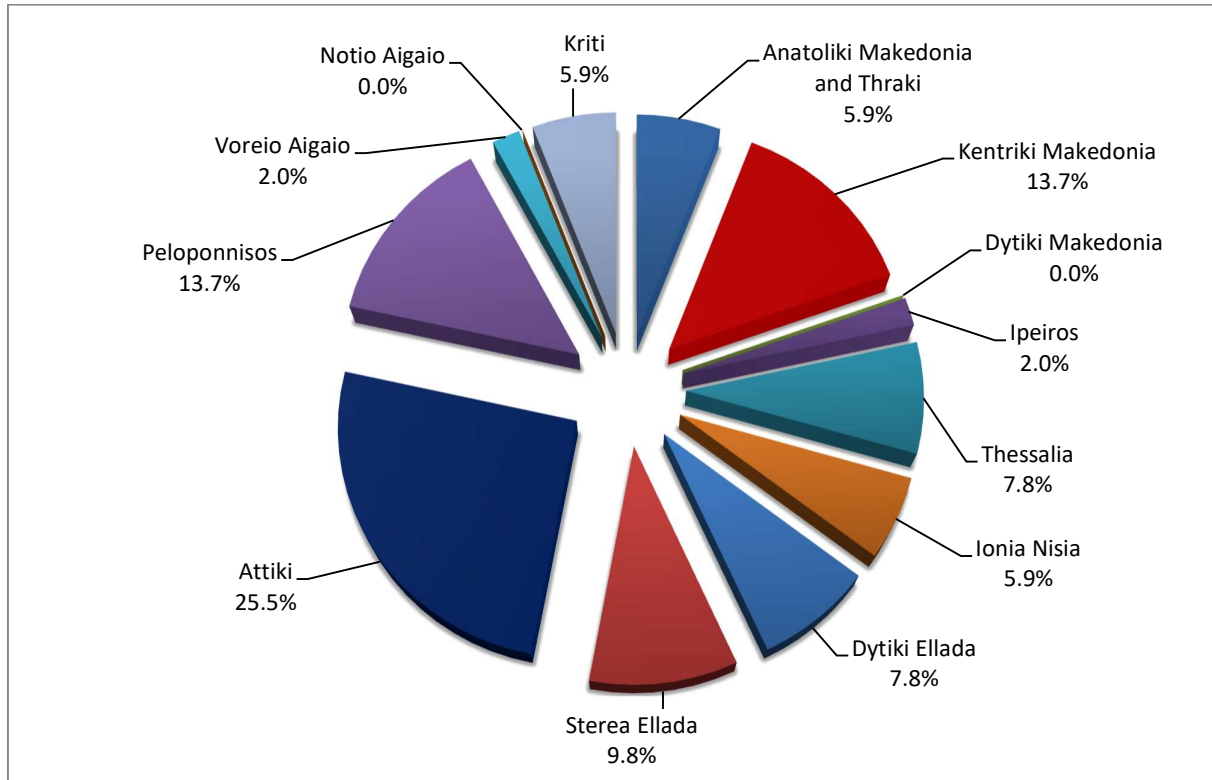
* Provisional data

Graph 3: Road traffic accidents by region, December 2022 *



* Provisional data

Graph 4: Fatalities by region, December 2022 *



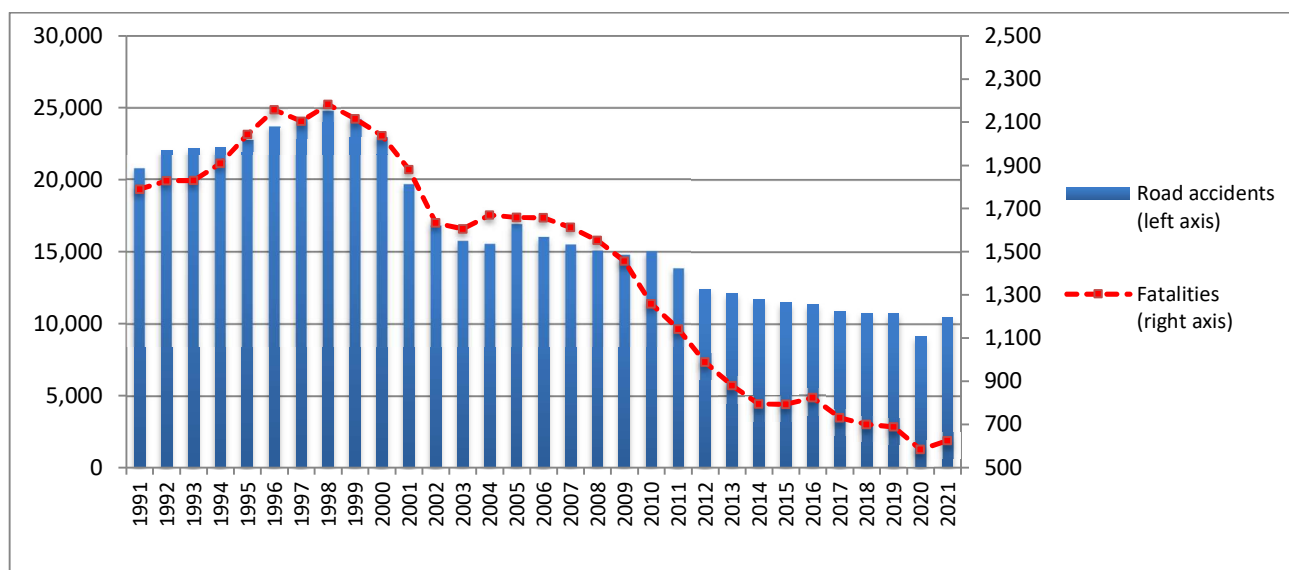
* Provisional data

Table 3: Road traffic accidents and casualties for the period January - December 2020, 2021 and 2022*

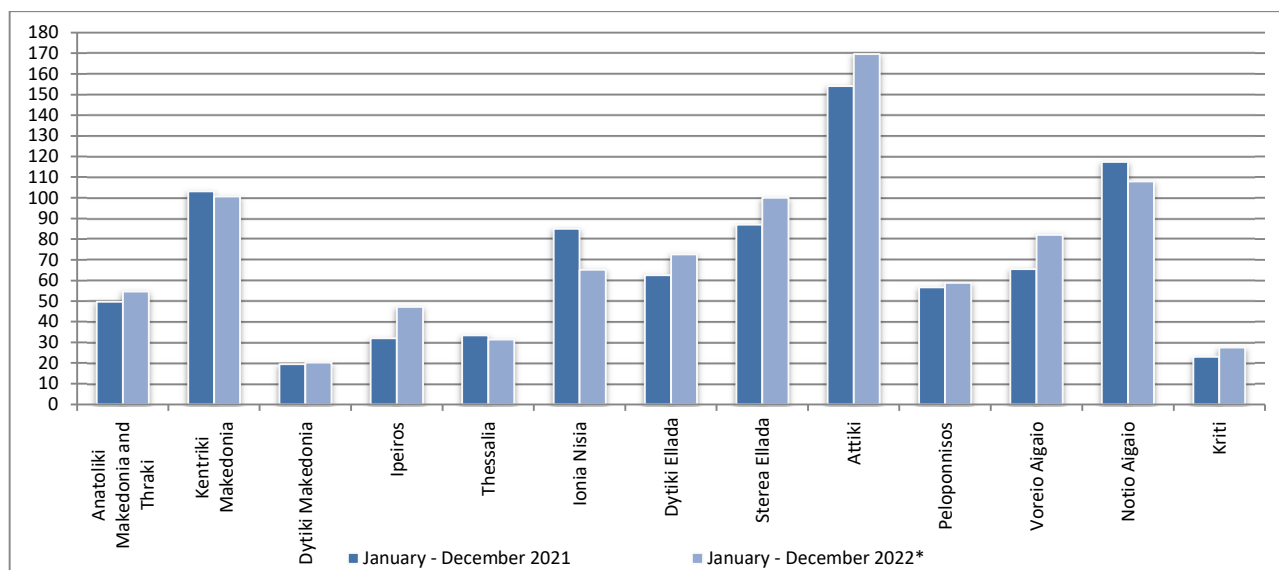
	2020	2021	2022*
	January - December	January - December	January - December
Road Accidents	9,083	10,454	11,199
<i>Annual Change (%) :</i>		15.1	7.1
Fatalities	584	624	635
<i>Annual Change (%) :</i>		6.8	1.8
Serious injuries	518	610	636
<i>Annual Change (%) :</i>		17.8	4.3
Slight injuries	10,300	11,746	12,553
<i>Annual Change (%) :</i>		14.0	6.9

* Provisional data

Graph 5: Total Road traffic accidents and fatalities, 1991-2021

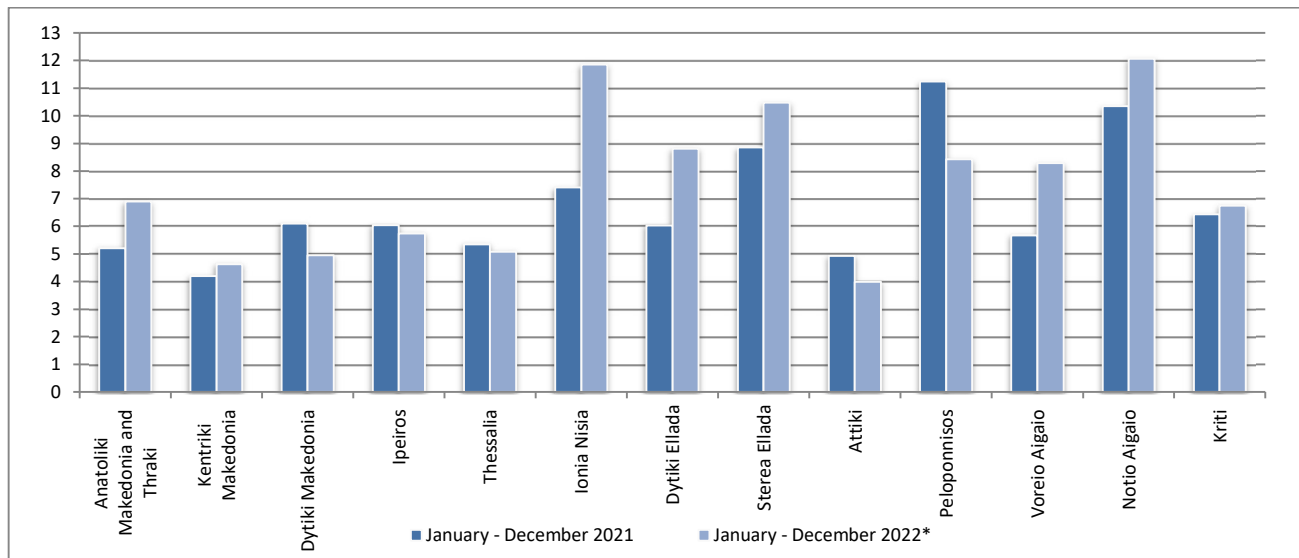


Graph 6: Road traffic accidents per 100,000 inhabitants for the period January - December 2021 and 2022*

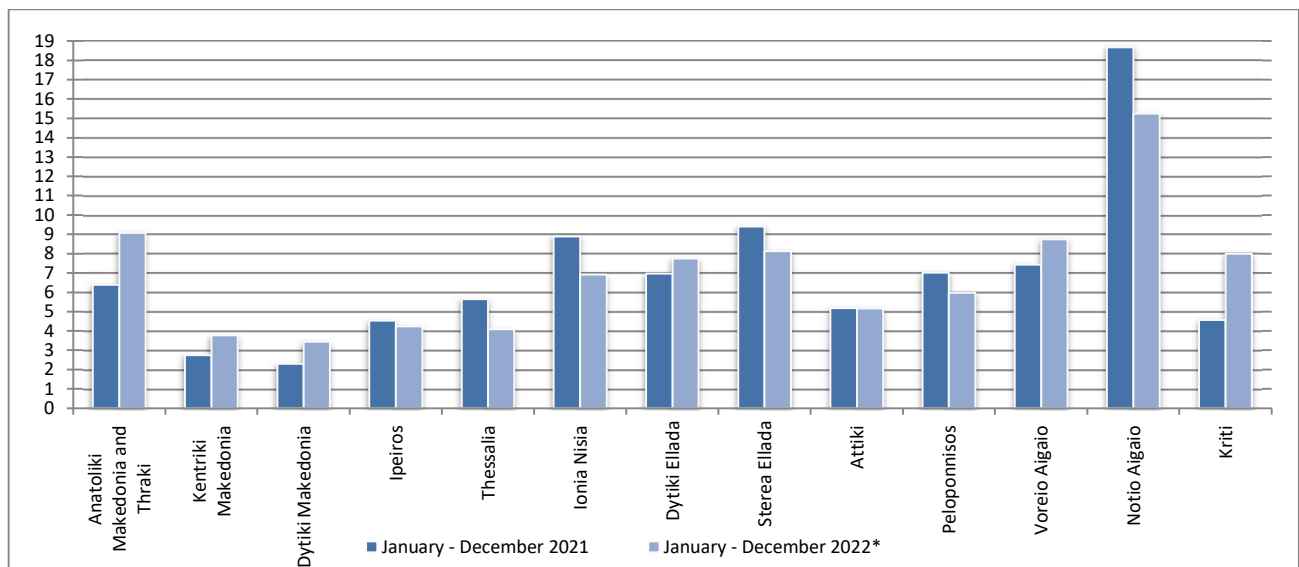


* Provisional data

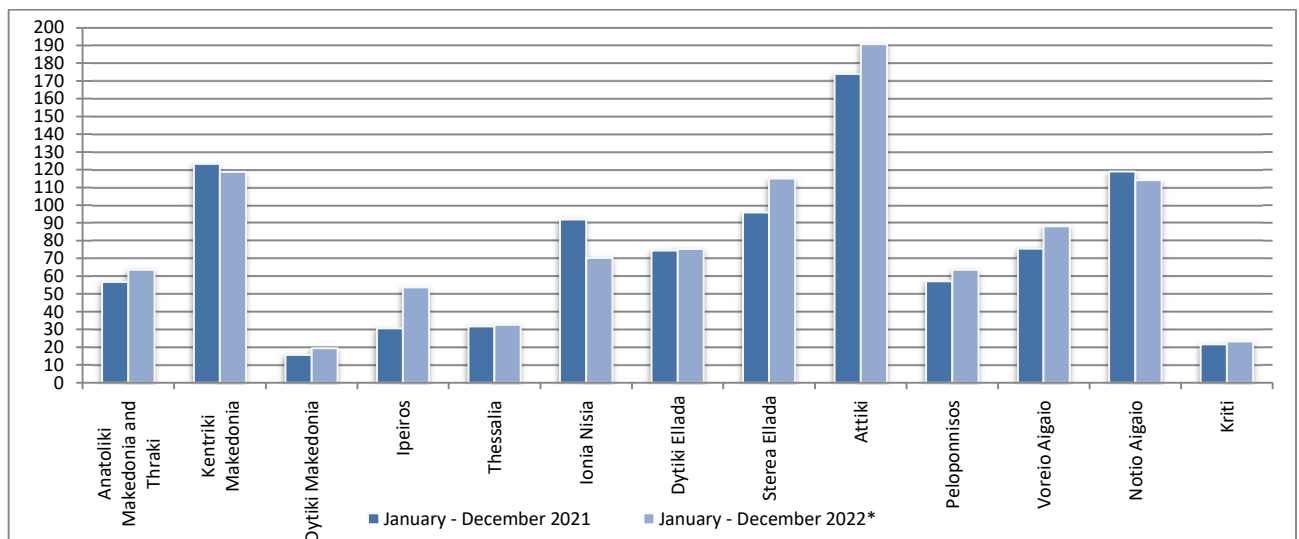
Graph 7: Fatalities per 100,000 inhabitants for the period January - December 2021 and 2022*



Graph 8: Serious injuries per 100,000 inhabitants for the period January - December 2021 and 2022*



Graph 9: Slight injuries per 100,000 inhabitants for the period January - December 2021 and 2022*



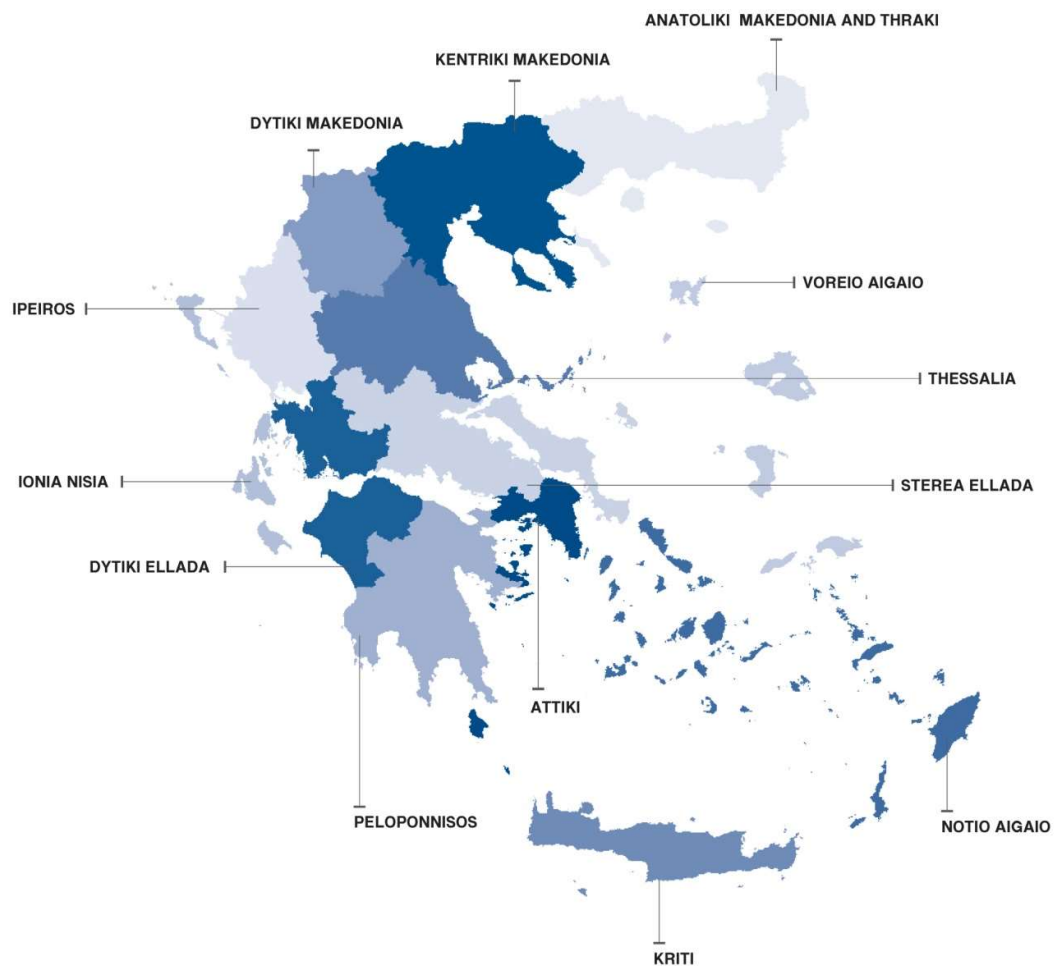
* Provisional data

EXPLANATORY NOTES

Survey on Road Traffic Accidents The Survey on Road Traffic Accidents is conducted on a monthly basis and it records, for each region (see map) and department of Greece and for each month separately, the number of accidents resulting in death or injury, as well as the number of persons injured by categories (drivers, passengers, pedestrians).

On a yearly basis, road traffic accidents are further analyzed. The competent agencies for filling in/collecting the forms on road accidents are the local Police Authorities and the local Port Authorities of Greece.

The lower level of analysis for the place where an injury road accident occurred is the settlement. Data are collected on a monthly basis. The main variables are the following: place of accident, kind of road, casualties, conditions of road surface and type of road.



Legal basis The Survey on Road Traffic Accidents is governed by Council Decision 93/704 of the European Community.

Reference period Monthly.

Availability of data Provisional data are available 2 months after the reference month. Final data are available 10 months after the reference year.

Definitions **Road accident** (injury accident): Any accident involving at least one road motor vehicle in motion on a public road or square to which the public has access (excluding yards, industrial sites or vehicle depot of public transport enterprises), resulting in at least one injured or killed person. Accidents with only material damages are not included.

Fatality (Death): Any person killed immediately or dying within 30 days as a result of an injury accident (This national definition applies since 01.01.1996)

Person injured: Any person who sustained an injury as result of an injury accident, and who normally needs medical treatment.

Serious injury: Any person who sustained an injury as result of an injury accident, such as brain damages, mutilation, multiple injuries, which may result in lack of awareness or which are life-threatening.

Slight injury: Any person injured who sustained minor and not life-threatening injuries.

Vehicle: Include motor vehicles, trolleybuses, motorcycles, bicycles, motorbikes, agricultural and road making machines, animal and hand-drawn vehicles. Railway vehicles are excluded, unless the road accident involves at least one of the aforementioned types of vehicles and therefore, railway vehicles are considered vehicles.

Methodology The forms of the survey are filled in by the local Police Authorities and the local Port Authorities as well.

References More information about Road Traffic Accidents is available on ELSTAT's website and more specifically at the link: <https://www.statistics.gr/en/statistics/-/publication/SDT03/>.