



ISSUING OF MOTOR VEHICLE LICENSES: MARCH 2026

The Hellenic Statistical Authority announces that in March 2026, 25,722 road motor cars (both new and used from abroad) were put into circulation for the first time, recording an increase 18.2% compared with the corresponding month of 2025 when the number of road motor cars was 21,761. In March 2025, a 4.9% increase had been observed in comparison with the corresponding month of 2024 (Table 1, Graphs 1,2,3,5). A total number of 15,897 new cars were put into circulation in March 2026 compared with 13,622 in March 2025, recording an increase 16.7%.

The motorcycles over 50cc (both new and used from abroad) that were put into circulation for the first time in March 2026 amounted to 6,545, against 5,941 in March 2025, thus recording a 10.2% increase. In March 2025, a 15.1% increase had been observed in comparison with the corresponding month of 2024 (Table 1, Graph 4). Out of the above motorcycles 6,193 were new, while the corresponding figure in March 2025 was 5,679, recording a 9.1% increase.

During the period January - March 2026, 66,388 road motor cars (both new and used from abroad) were put into circulation for the first time, representing an increase of 6.4% compared to the corresponding period of 2025 when the number of road motor cars was 62,399. During the period January - March 2025 a decrease of 1.7% had been observed in comparison with the corresponding period of 2024 (Table 3, Graphs 6,7). Out of the above number of road motor cars that were put into circulation from January to March 2026 37,862 were new, while the corresponding number during the respective period of 2025 was 35,799, recording an increase of 5.8%.

During the period January - March 2026 the motorcycles over 50cc (both new and used from abroad) were put into circulation for the first time amounted to 15,998 against 15,030 in the respective period of 2025, thus representing a 6.4% increase. An increase of 3.7% had been observed during the period January - March 2025 in comparison with the corresponding period of 2024 (Table 3, Graphs 6,7). A total number of 15,047 new motorcycles were put into circulation, from January to March 2026, compared with 14,199 during the corresponding period of 2025, recording a 6.0% increase.

Information on methodological issues:

Sectoral Statistics Division

Transport Statistics Section

Elpida Kleftogianni, Konstantinos Menexes

Tel: +30 213 135 3087, +30 213 135 3055

e-mail: e.kleftogianni@statistics.gr, k.menexes@statistics.gr

Information for data provision:

Tel: +30 213 135 2022

e-mail: data.dissem@statistics.gr

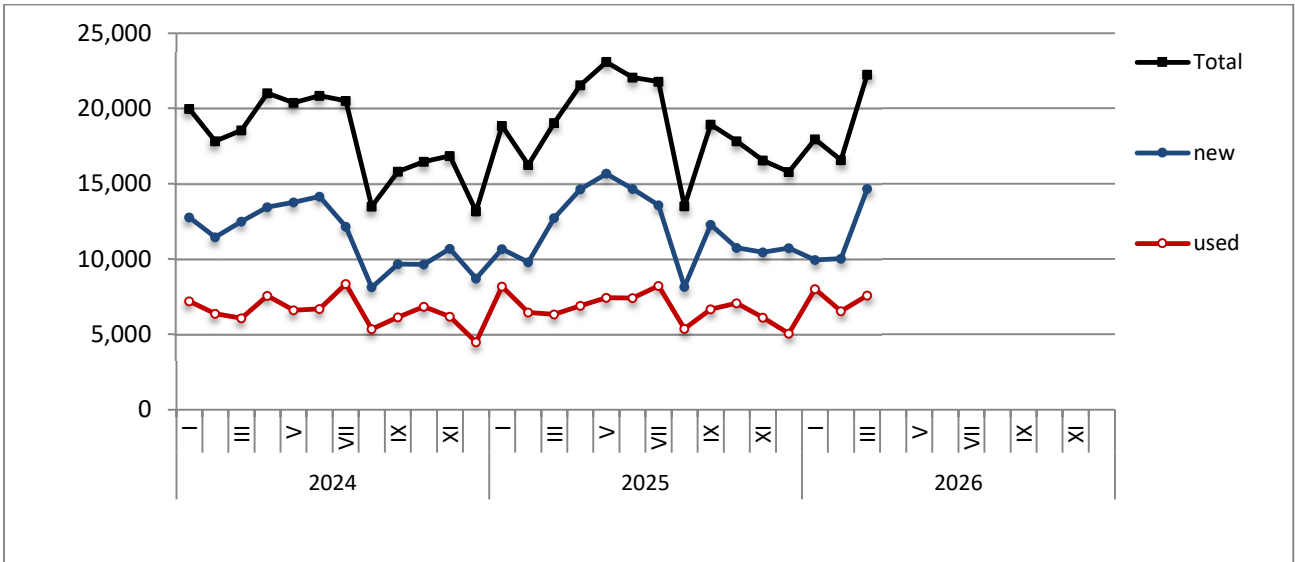
Table 1. Road motor vehicles, both new and used, put into circulation for the first time in Greece: March 2024 - 2026

Category of Road Motor Vehicles	March									Change (%)					
	2024			2025			2026			2025/2024			2026/2025		
	Total	New	Used	Total	New	Used	Total	New	Used	Total	New	Used	Total	New	Used
Greece, total															
Road Motor Vehicles,total	25,909	18,162	7,747	27,702	19,301	8,401	32,267	22,090	10,177	6.9%	6.3%	8.4%	16.5%	14.5%	21.1%
1. Road motor cars	20,747	13,285	7,462	21,761	13,622	8,139	25,722	15,897	9,825	4.9%	2.5%	9.1%	18.2%	16.7%	20.7%
Passenger Cars	18,537	12,476	6,061	19,038	12,710	6,328	22,243	14,664	7,579	2.7%	1.9%	4.4%	16.8%	15.4%	19.8%
Buses	65	19	46	119	52	67	156	77	79	83.1%	173.7%	45.7%	31.1%	48.1%	17.9%
Lorries	2,145	790	1,355	2,604	860	1,744	3,323	1,156	2,167	21.4%	8.9%	28.7%	27.6%	34.4%	24.3%
2. Motorcycles > 50 cc	5,162	4,877	285	5,941	5,679	262	6,545	6,193	352	15.1%	16.4%	-8.1%	10.2%	9.1%	34.4%
Prefecture of Attica															
Road Motor Vehicles,total	14,733	11,620	3,113	15,853	12,690	3,163	18,189	14,443	3,746	7.6%	9.2%	1.6%	14.7%	13.8%	18.4%
1. Road motor cars	12,142	9,106	3,036	12,945	9,868	3,077	15,441	11,785	3,656	6.6%	8.4%	1.4%	19.3%	19.4%	18.8%
Passenger Cars	11,340	8,698	2,642	11,874	9,306	2,568	14,058	10,982	3,076	4.7%	7.0%	-2.8%	18.4%	18.0%	19.8%
Buses	34	13	21	55	20	35	79	51	28	61.8%	53.8%	66.7%	43.6%	155.0%	-20.0%
Lorries	768	395	373	1,016	542	474	1,304	752	552	32.3%	37.2%	27.1%	28.3%	38.7%	16.5%
2. Motorcycles > 50 cc	2,591	2,514	77	2,908	2,822	86	2,748	2,658	90	12.2%	12.3%	11.7%	-5.5%	-5.8%	4.7%

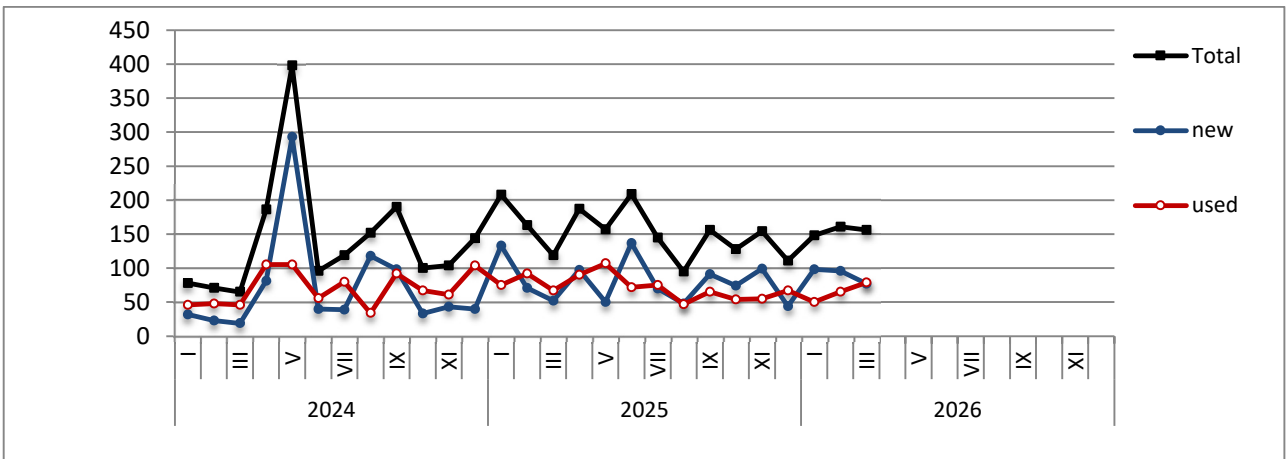
Table 2. Road motor vehicles, both new and used, put into circulation for the first time in Greece: April 2024 - March 2026

Category of Road Motor Vehicles	Average Apr. 2024 - Mar. 2025						Average Apr. 2025 - Mar. 2026			Change (%)		
	2025						2026			Average Apr. 2025 - Mar. 2026 / Average Apr. 2024 - Mar. 2025		
	Total	New	Used	Total	New	Used	Total	New	Used	Total	New	Used
Greece, total												
Road Motor Vehicles,total	27,095	18,609	8,486	28,874	19,948	8,926	6.6%	7.2%	5.2%			
1. Road motor cars	20,225	12,059	8,166	21,845	13,220	8,625	8.0%	9.6%	5.6%			
Passenger Cars	17,714	11,122	6,592	18,984	12,125	6,859	7.2%	9.0%	4.1%			
Buses	165	87	78	151	82	69	-8.5%	-5.7%	-11.5%			
Lorries	2,346	850	1,496	2,710	1,013	1,697	15.5%	19.2%	13.4%			
2. Motorcycles > 50 cc	6,870	6,550	320	7,029	6,728	301	2.3%	2.7%	-5.9%			

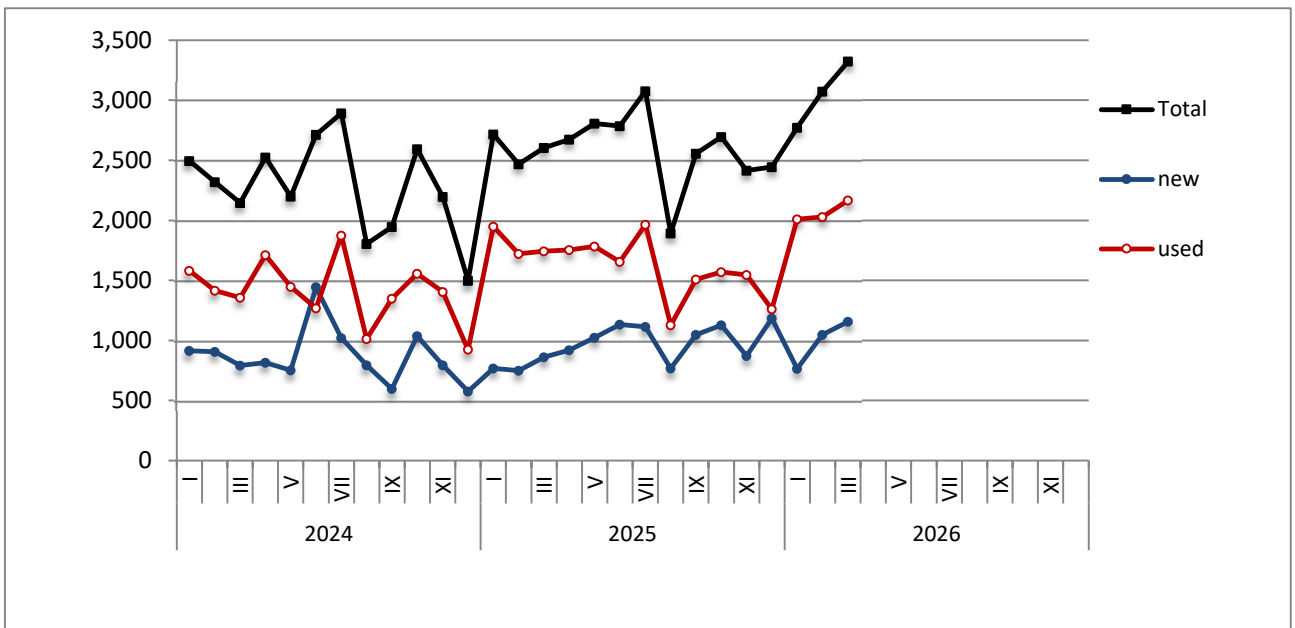
Graph 1: Passenger Cars (January 2024 – March 2026)



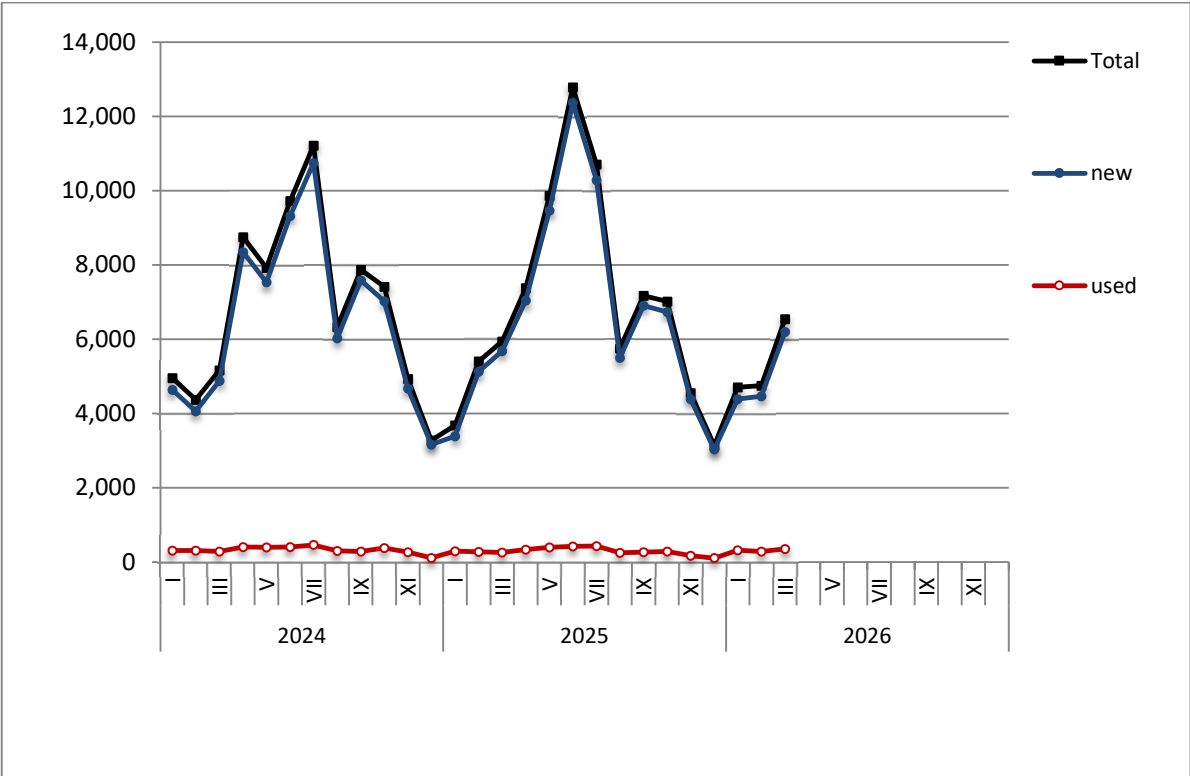
Graph 2: Buses (January 2024 – March 2026)



Graph 3: Lorries (January 2024 – March 2026)



Graph 4: Motorcycles (January 2024 – March 2026)



Graph 5: New Registrations of Motor Vehicles (March 2026)

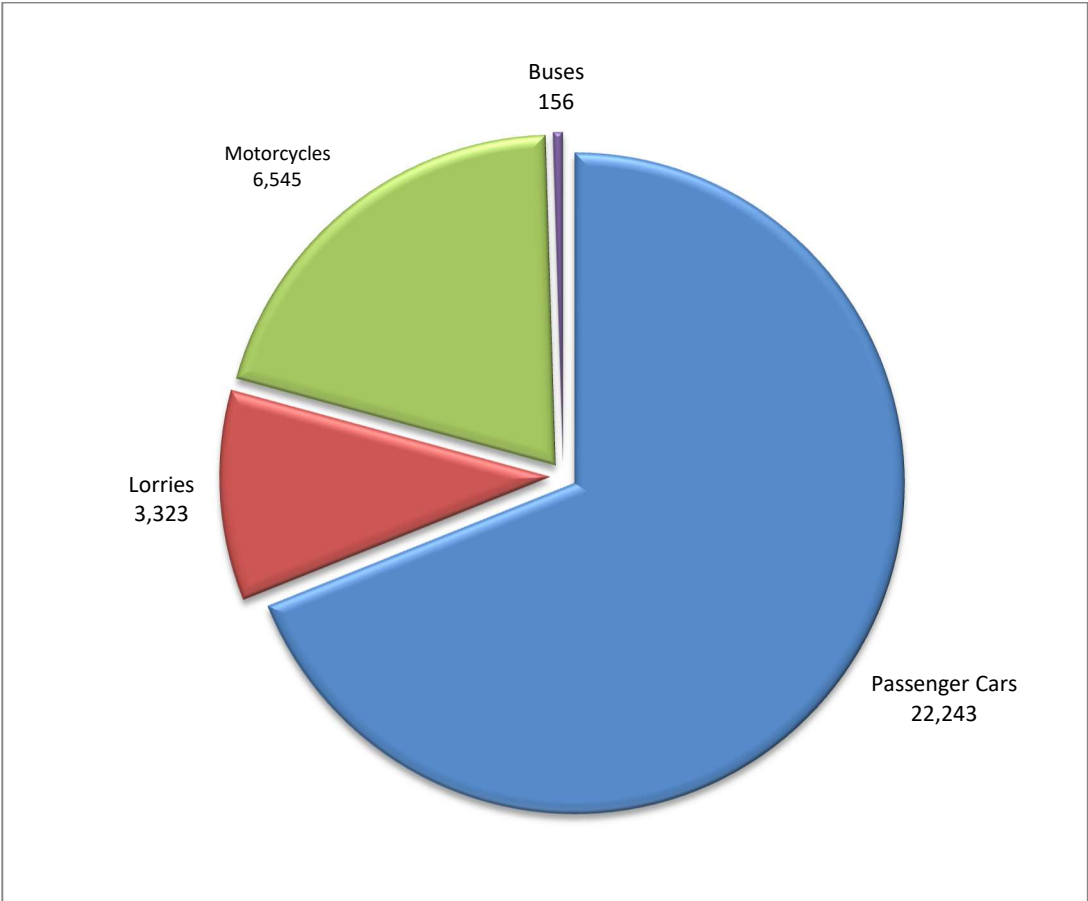
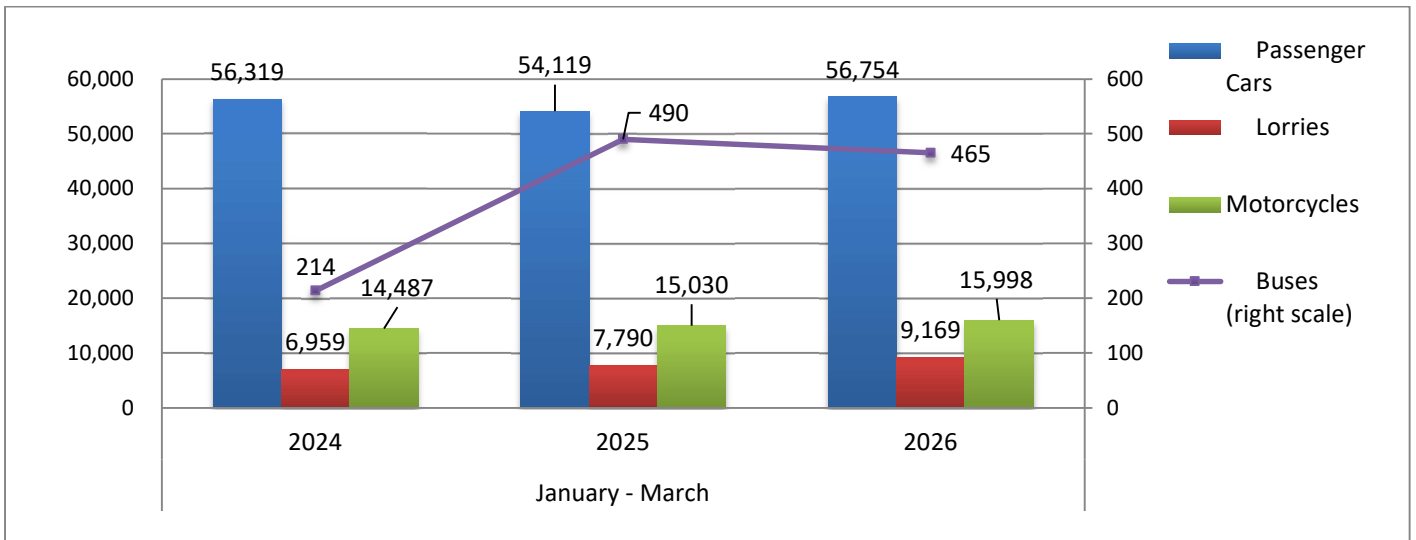


Table 3. Road motor vehicles, both new and used, put into circulation for the first time in Greece: January - March, years 2024 till 2026															
Category of Road Motor Vehicles	January - March									Change (%)					
	2024			2025			2026			2025/2024			2026/2025		
	Total	New	Used	Total	New	Used	Total	New	Used	Total	New	Used	Total	New	Used
Greece, total															
Road Motor Vehicles, total	77,979	52,946	25,033	77,429	49,998	27,431	82,386	52,909	29,477	-0.7%	-5.6%	9.6%	6.4%	5.8%	7.5%
1. Road motor cars	63,492	39,371	24,121	62,399	35,799	26,600	66,388	37,862	28,526	-1.7%	-9.1%	10.3%	6.4%	5.8%	7.2%
Passenger Cars	56,319	36,688	19,631	54,119	33,168	20,951	56,754	34,625	22,129	-3.9%	-9.6%	6.7%	4.9%	4.4%	5.6%
Buses	214	74	140	490	256	234	465	271	194	129.0%	245.9%	67.1%	-5.1%	5.9%	-17.1%
Lorries	6,959	2,609	4,350	7,790	2,375	5,415	9,169	2,966	6,203	11.9%	-9.0%	24.5%	17.7%	24.9%	14.6%
2. Motorcycles > 50 cc	14,487	13,575	912	15,030	14,199	831	15,998	15,047	951	3.7%	4.6%	-8.9%	6.4%	6.0%	14.4%
Prefecture of Attica															
Road Motor Vehicles, total	43,834	33,986	9,848	42,723	32,759	9,964	45,852	35,187	10,665	-2.5%	-3.6%	1.2%	7.3%	7.4%	7.0%
1. Road motor cars	36,329	26,769	9,560	34,848	25,162	9,686	37,567	27,165	10,402	-4.1%	-6.0%	1.3%	7.8%	8.0%	7.4%
Passenger Cars	33,499	25,186	8,313	31,610	23,464	8,146	33,801	25,051	8,750	-5.6%	-6.8%	-2.0%	6.9%	6.8%	7.4%
Buses	118	55	63	279	180	99	278	206	72	136.4%	227.3%	57.1%	-0.4%	14.4%	-27.3%
Lorries	2,712	1,528	1,184	2,959	1,518	1,441	3,488	1,908	1,580	9.1%	-0.7%	21.7%	17.9%	25.7%	9.6%
2. Motorcycles >50 cc	7,505	7,217	288	7,875	7,597	278	8,285	8,022	263	4.9%	5.3%	-3.5%	5.2%	5.6%	-5.4%

Graph 6. New Motor Vehicles Circulation Licenses: January – March, years 2024 till 2026



Graph 7. New Registrations of Motor Vehicles: January – March 2026

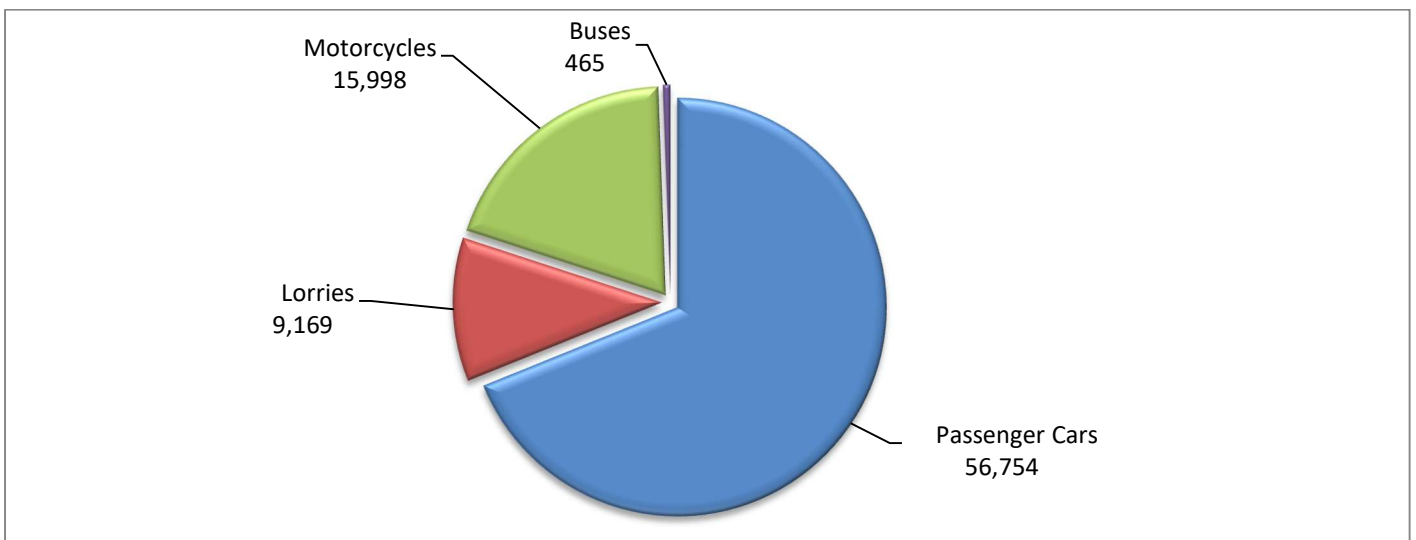


Table 4
Sales of new and used passenger cars by make: March 2026 and January - March 2026

Make	Passenger cars			
	March		January - March	
	new	used	new	used
ADRIA	-	-	-	1
ALFA ROMEO	55	32	232	101
ALPINA	-	1	1	1
ALPINE	-	1	-	2
ASTON MARTIN	-	1	-	5
AUDI	509	169	1,236	448
BENTLEY	2	1	3	3
BMW	730	244	1,802	768
BURSTNER	-	1	-	4
BYD	292	-	746	1
CAPRON	1	1	2	6
CARTHAGO	-	-	-	1
CHAUSSON	-	-	-	1
CHERY	65	-	172	-
CHERY, EBRO	350	-	697	-
CHERY, EXEED, FOWNIX, CHIREY, CHERY EXEED, OMODA	3	-	9	-
CHERY, OMODA	48	-	56	-
CHEVROLET	-	3	-	18
CHEVROLET, GMC, HOLDEN, DAEWOO	-	1	-	4
CITROEN	871	379	2,527	1,153
CITROEN / DS	1	175	4	504
CUPRA	84	11	298	23
DACIA	791	160	1,605	522
DAIHATSU	-	-	-	1
DEEPAL	19	-	32	-
DEEPAL, CHANGAN	5	-	10	-
DETHLEFFS	-	-	-	5
DFSK, SERES, SOKON, FENGON	7	-	15	-
DODGE	-	1	-	1
DONGFENG	4	-	7	-
DS	15	24	38	71
E-GO	-	-	-	1
EXEED, CHERY EXEED, OMODA, EXLANTIX, XTRIM, JAECOO	32	-	36	-
FERRARI	-	-	1	7
FIAT	259	290	707	752
FORD	247	574	618	1,602
FORD ²	-	-	-	1
GAC, AION	7	-	31	-
GEELY	26	-	75	-
GLOBE TRAVELLER	-	-	-	1
HONDA	40	57	93	196
HYMER	-	1	1	2
HYUNDAI	749	669	1,769	1,935
IMPREZA	-	1	-	1
INEOS	-	-	-	1
IVECO S.P.A / LAIKA CARAVANS	-	-	-	1
JAECOO, OMODA, CHERY, FOWNIX, LUCANO	28	-	82	-
JAGUAR	-	14	1	65

Table 4 (cont)
Sales of new and used passenger cars by make: March 2026 and January - March 2026

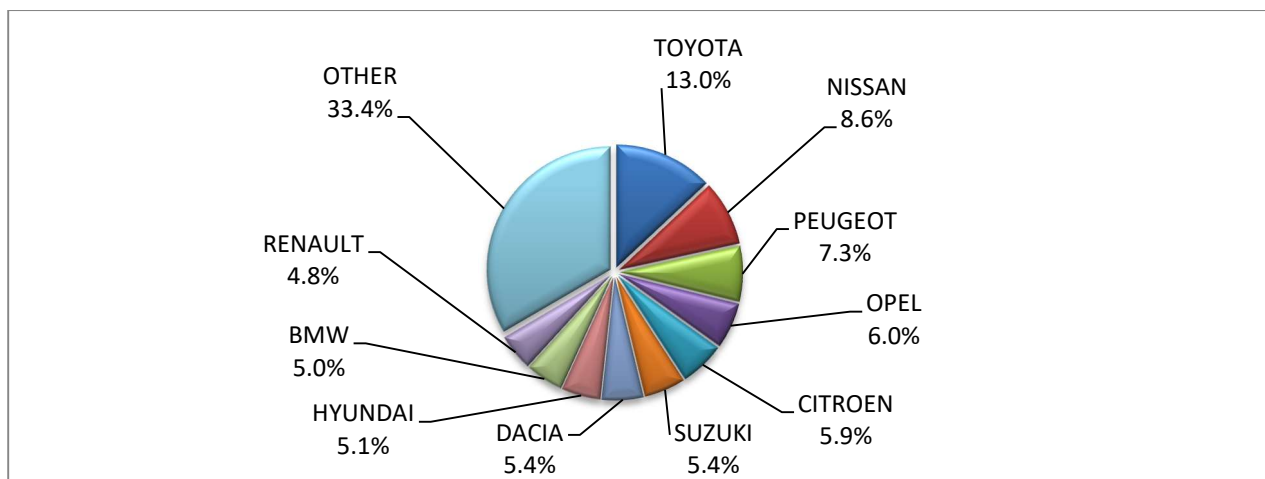
Make	Passenger cars			
	March		January - March	
	new	used	new	used
JEEP	213	83	540	246
KERABOSS	2	-	2	-
KIA	359	144	799	436
KNAUS	-	4	-	7
LADA	-	1	-	4
LAIKA CARAVANS	-	-	-	2
LAMBORGHINI	1	2	3	2
LANCIA	-	2	-	6
LAND ROVER	58	75	122	244
LEAPMOTOR	32	-	62	-
LEXUS	66	4	158	9
LINCOLN	-	-	-	1
LMC	-	1	-	1
LOTUS	-	-	1	-
LYNK&CO	8	3	20	13
MASERATI	2	2	6	7
MAZDA	53	44	155	117
MERCEDES	213	736	448	2,061
MERCEDES ¹	1	-	2	-
MERCEDES ²	-	-	1	-
MG	3	4	25	6
MG, ROEWE	387	8	1,060	15
MINI	342	34	672	127
MITSUBISHI	4	93	10	291
MOBILVETTA DESIGN SpA	-	2	-	3
MOKE	1	-	2	-
NIO	7	-	27	-
NISSAN	1,257	456	1,510	1,407
NISSAN ¹	-	-	3	-
OPEL	887	460	2,500	1,367
PEUGEOT	1,075	850	2,684	2,481
PEUGEOT ²	-	-	1	-
PLA	-	1	-	1
POESSL	-	-	-	1
PORSCHE	12	71	61	185
POSSL	-	-	-	1
PSA AUTOMOBILES	-	1	-	2
RANGE ROVER	-	8	-	18
RENAULT	706	541	1,455	1,647
SCODA	-	-	-	16
SEAT	145	50	303	147
SKODA	135	85	581	216
SMART	4	106	16	274
SRM, SWM, SHINERAY, KMC	-	-	7	-
SSANGYONG	-	-	-	2
SSANGYONG, KG MOBILITY	46	-	61	-
SUBARU	2	6	18	27

Table 4 (cont)
Sales of new and used passenger cars by make: March 2026 and January - March 2026

Make	Passenger cars			
	March		January - March	
	new	used	new	used
SUZUKI	797	124	1,877	378
TESLA	227	15	308	37
TOYOTA	1,902	476	4,878	1,279
TRIGANO	-	-	-	3
VOLKSWAGEN	341	252	981	764
VOLVO	114	24	285	69
VOYAH	-	-	5	-
XPENG	12	-	38	-
ZEEKR	2	-	15	-
ZEEKR, GEELY	8	-	17	-
TOTAL	14,664	7,579	34,625	22,129

- 1 : With 2nd/3rd stage manufacturer in Greece.
- 2 : With 2nd/3rd stage manufacturer abroad.

Graph 8. Sales of new passenger cars by make (March 2026)



Graph 9. Sales of new passenger cars by make (January – March 2026)

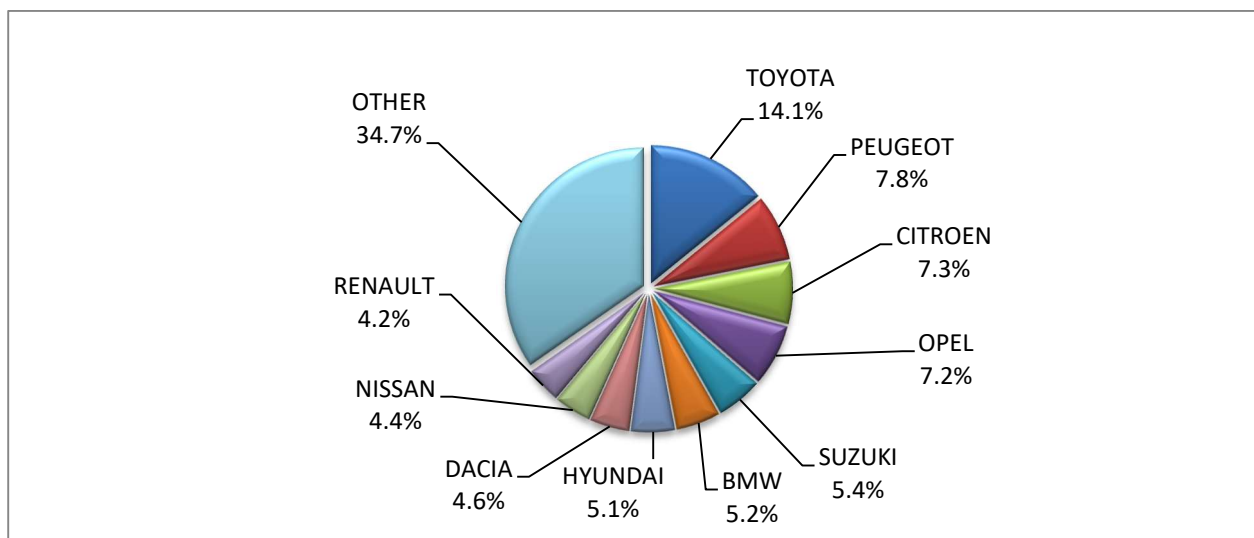


Table 5
Sales of new and used lorries by make: March 2026 and January - March 2026

Make	Lorries			
	March		January - March	
	new	used	new	used
BMC Otomotiv Sanayi ve Ticaret A.Ş. ¹	-	-	1	-
BYD	2	-	4	3
CHRYSLER	-	-	-	1
CITROEN	101	79	222	214
DACIA	-	8	2	22
DAF	4	75	6	209
DAF ¹	-	-	2	-
DAF ²	2	-	2	-
DAIHATSU	-	1	-	1
DODGE	-	3	-	5
DR MOTOR	-	-	-	1
ESAGONO ENERGIA	-	-	2	-
EVUM MOTORS	2	-	2	-
FARIZON	1	-	1	-
FARIZON, LEVC	2	-	5	-
FCA US LLC	-	5	-	6
FEIDI	2	-	3	1
FIAT	103	118	234	379
FIAT-IVECO	-	3	-	7
FORD	177	422	486	1,163
FORD ¹	27	-	31	3
FORD ²	2	-	6	-
FOTON	9	-	12	-
FUSO	-	3	-	6
HUMBAUR GMBH	-	-	-	1
HYUNDAI	-	1	-	5
ISUZU	105	17	146	68
ISUZU ¹	3	-	3	-
IVECO	1	47	5	125
IVECO ¹	1	-	5	1
IVECO ²	-	-	-	1
IVECO MAGIRUS	-	-	-	3
JEEP	-	2	-	5
KIA	-	-	-	2
LAMAR-FCA ITALY FIAT DUCATO	-	-	-	1
LAND ROVER	1	1	2	2
LEVC	-	1	-	1
MAN	8	134	14	405
MAN ¹	3	-	7	-
MAN ²	2	-	17	-
MAXUS	-	-	1	-
MAXUS, LDV	9	1	36	3
MAZDA	-	1	-	2
MERCEDES	19	500	60	1,411

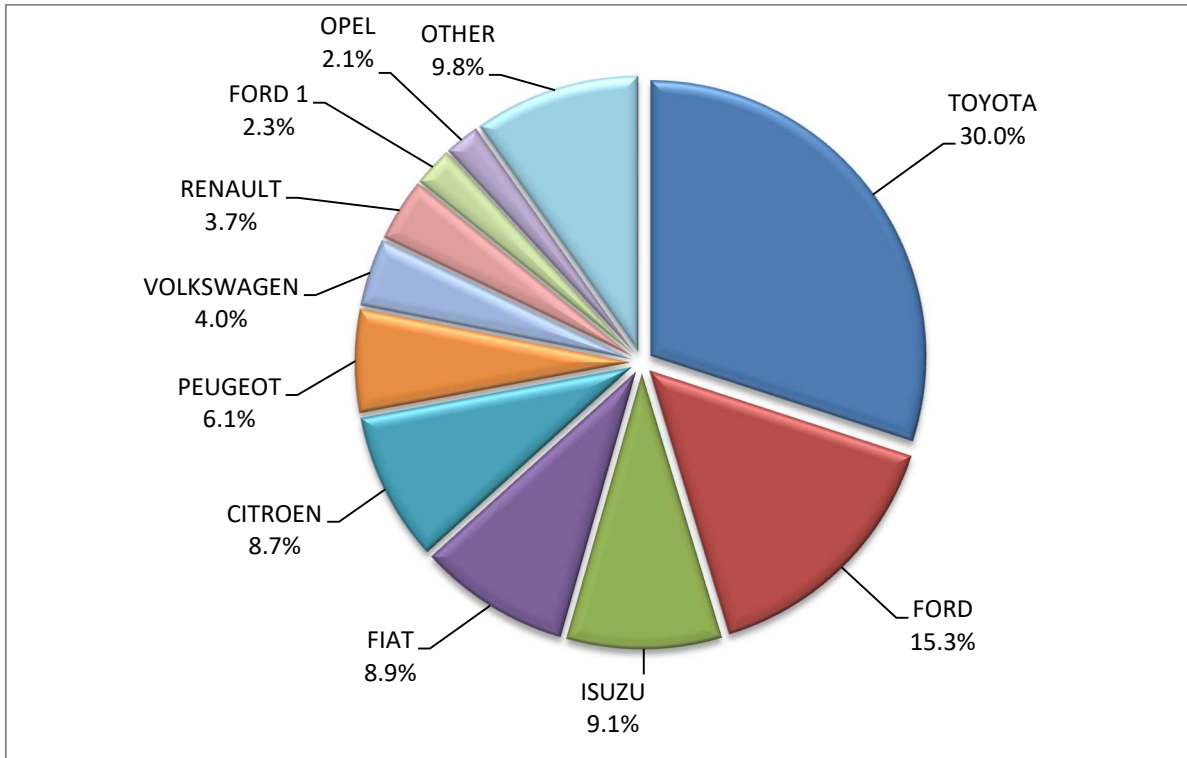
Table 5 (cont)
Sales of new and used lorries by make: March 2026 and January - March 2026

Make	Lorries			
	March		January - March	
	new	used	new	used
MERCEDES ¹	3	-	7	8
MERCEDES ²	3	-	5	1
MITSUBISHI	-	39	-	115
MITSUBISHI ¹	-	-	2	3
MITSUBISHI FUSO	2	5	2	14
MITSUBISHI FUSO ¹	1	-	8	1
MITSUBISHI FUSO ²	-	-	4	2
NISSAN	-	50	4	174
NISSAN ²	-	1	-	1
OAF	-	-	-	2
OPEL	24	69	109	231
PEUGEOT	70	78	227	226
PFAU	-	2	-	3
PIAGGIO	-	3	-	8
PIAGGIO ¹	-	-	1	-
PIAGGIO ²	1	-	2	-
RAM	-	-	-	1
RENAULT	43	143	120	398
RENAULT ¹	1	-	1	-
SAXAS	-	-	-	1
SCANIA	6	83	23	209
SPIER	-	1	-	1
SSANGYONG, KG MOBILITY	17	-	34	-
STX	-	1	-	1
SUZUKI	-	-	-	1
TOYOTA	347	76	890	196
TOYOTA ¹	-	-	12	-
VICTORY	2	-	5	-
VOLKSWAGEN	46	75	163	218
VOLVO	4	119	25	331
VOLVO ¹	-	-	5	-
TOTAL	1,156	2,167	2,966	6,203

1 : With 2nd/3rd stage manufacturer in Greece.

2 : With 2nd/3rd stage manufacturer abroad.

Graph 10. Sales of new lorries by make (March 2026)



Graph 11. Sales of new lorries by make (January – March 2026)

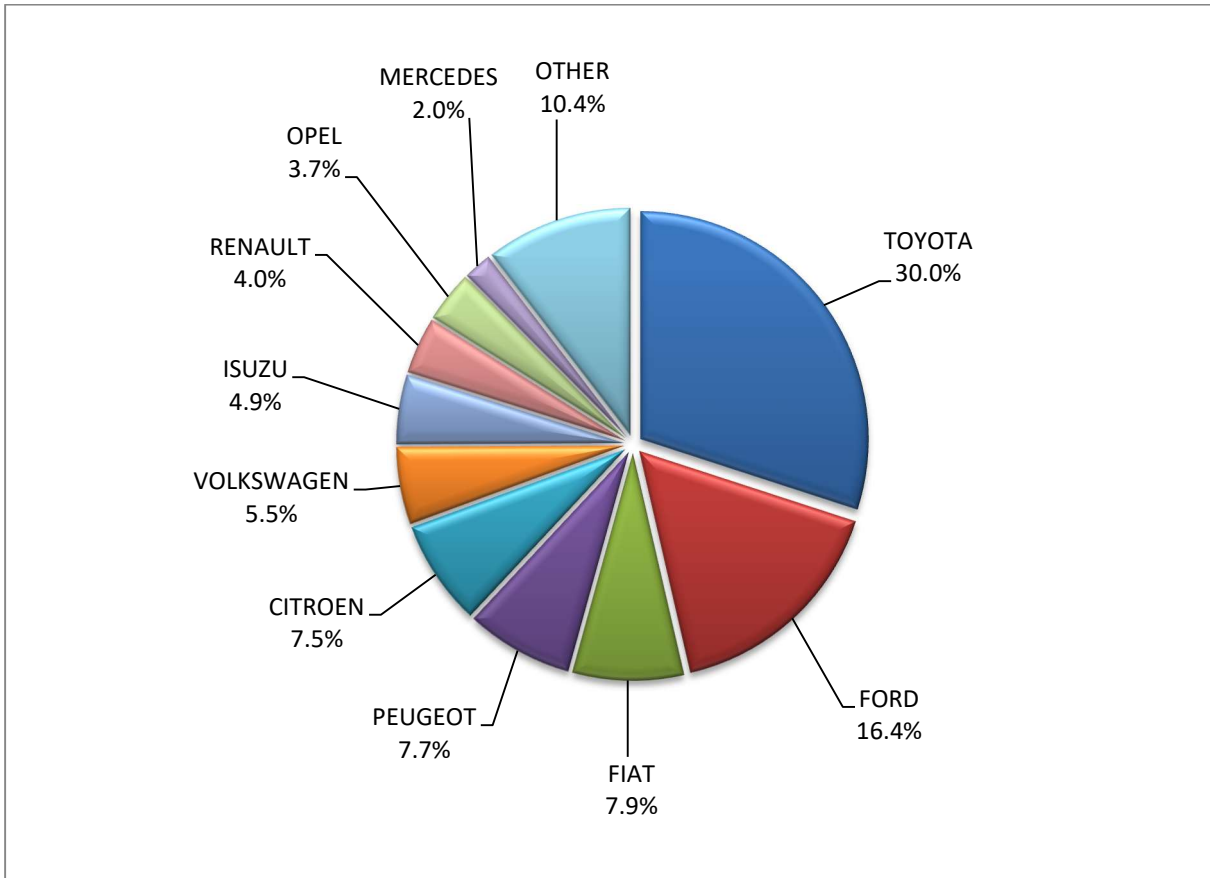


Table 6
Sales of new and used buses by make: March 2026 and January - March 2026

Make	Buses			
	March		January - March	
	new	used	new	used
BOVA	-	6	-	14
EVOBUS	-	1	-	1
FORD	8	1	15	9
GRANTON, BAZN, GOLDION	-	-	2	-
HIGER	-	-	10	-
IRISBUS	-	-	-	1
IRISBUS, IVECO, IVECO BUS, HEULIEZ, HEULIEZ BUS	26	-	26	-
ISUZU	-	2	-	3
ISUZU, AOS, GLOBUS, AIOS	1	-	1	-
IVECO	-	-	-	2
IVEKO ²	1	-	1	-
KARSAN	-	-	2	-
KING LONG, RHODIUM	1	-	3	-
MAN	10	7	19	16
MAN/NEOPLAN	-	-	-	1
MENARINIBUS	-	-	109	-
MERCEDES	2	38	8	96
MERCEDES ¹	18	-	50	-
MERCEDES ²	5	1	7	1
NEOPLAN	4	3	5	3
OTOKAR	-	1	-	2
SCANIA	-	1	-	1
SCANIA ²	-	1	1	1
SETRA	-	8	1	21
TEMSA	1	5	11	14
VAN HOOL	-	1	-	4
VOLVO	-	2	-	2
XIAMEN KING LONG	-	1	-	2
TOTAL	77	79	271	194

1 : With 2nd/3rd stage manufacturer in Greece.

2 : With 2nd/3rd stage manufacturer abroad.

Graph 12. Sales of new buses by make (January – March 2026)

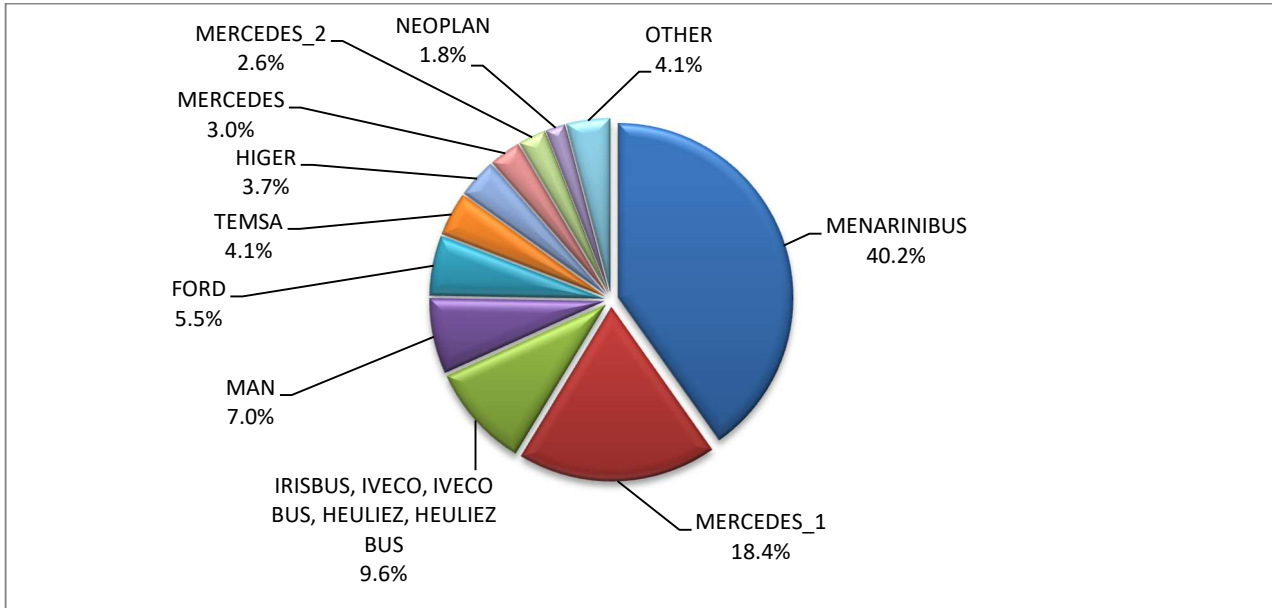


Table 7

Sales of new and used motorcycles by make or manufacturer: March 2026 and January - March 2026

Make	Motorcycles			
	March		January - March	
	new	used	new	used
APRILIA	56	3	120	8
ARIIC, JINLANG, KEWAY, ARORA, KL, UM	5	-	14	-
ASUS, Joyrace, Maxon, Gineva Moto, Berini, ROMET MOTORS, ROUTER, ZIPP, TOROS, LuXXon, Motobi, Rivero	7	-	30	-
ASUS, YUKI, RATO, DOCKER, MIGLIORI, VICTORY, AVETA	2	-	2	-
BAJAJ	-	-	2	-
BASHAN, AMGroup, AMGroup Bike, DON, IRBIS, WORKER BEAR, Nomik ATV 2	-	-	2	-
BAW, NIEVE, RELIVE, ALLVIEW, Yunlong Motors	3	-	5	-
BENDA	-	-	-	1
BENELLI	6	-	33	2
BENSEL	-	-	-	1
BETA	9	1	29	7
BIMOTA	1	-	1	-
BMW	68	36	258	150
BOMBARDIER RECREATIONAL PRODUCTS ING (BRP)	-	1	-	2
BONTU, BENTU	4	-	14	-
BRIXTON	5	-	13	-
BRP	-	-	1	-
CFMOTO	278	-	678	1
CFMOTO, WHITE KNUCKLE, MONDIAL, JUNAK	-	1	-	1
CFMOTO, ZEEHO	14	-	29	-
DAYANG, DAYTONA MOTORS, NIPPONIA, DYMOTO, VEEROAD, EVO MOTORS, MH MOTORCYCLES, FKM, FKMOTORS	2	-	6	-
DAYANG, DAYTONA MOTORS, NIPPONIA, KUBA, VEEROAD, SUMCO, CETUR, RUTEC	29	-	92	-
DAYANG, DAYTONA MOTORS, NIPPONIA, VEEROAD, DOCKER, RKS, LUOJIA	18	-	40	-

Table 7 (cont)

Sales of new and used motorcycles by make or manufacturer: March 2026 and January - March 2026

Make	Motorcycles			
	March		January - March	
	new	used	new	used
DAYANG, DAYTONA MOTORS, NIPPONIA, VEEROAD, RUTEC, CETUR, SALCANO, LUOJIA, GA CE LA, HIGHLAND, NORTH	126	-	303	-
DAYANG, DYMOTO, DAYTONA MOTORS, NIPPONIA, MH MOTORCYCLES, ORCAL, SUMCO, KUBA, RKS, RUTEC, AJS	32	-	76	-
DAYANG, ECOCREMO, ECOOTER, ECOOTOR, AGM, ORCAL, SUMCO	-	-	1	-
DAYTONA MOTORS, DAYANG, DYMOTO, NIPPONIA, MH MOTORCYCLES, ORCAL, SUMCO, RUTEC, AJS	1	-	1	-
DONGBEN, GANCIN, DIRONG, KRAL	2	-	7	-
DOOHAN, TRINITY, PINK, DOUHA, CECOTEC	1	-	3	-
DUCATI	8	19	25	35
EAGLE	-	-	-	1
EASYCOOL, HECHHI, HURBA, Mitt, Blu:s, Luxxon, ROMET, VORTEX By Gingabike	-	-	1	-
ECOSHIFT	-	-	201	-
EFUN, ZAP, FRISON, easy-watts	2	-	11	-
EMBUGGY, EVANGEL, The Original BeachBuggy, Beach Buggy	1	-	3	-
ERIDE ELECTROMOBILITY, BEEV, YUNLONG MOTORS, EasyFleet, Pacta Car, DESNER, WANERS, MAXVIEW	-	-	1	-
FB, KL, TNT, MALAGUTI, KEEWAY, ZF-KY, TG, TNT MOTOR, F.B Mondial-10 VOLTE CAMPIONE DEL MONDO (figurativo)	1	-	1	-
GAS GAS	2	1	3	2
GILERA, PIAGGIO	-	1	-	1
GOCCIA, E-ZI, AGM, SFM, VGA, SACHS, SAXXX, KEEWAY, Vengo, Viarelli, EZI, E ZI	-	-	2	-
GOUPIL, MEGA, POLARIS, GEM	-	-	1	-
GPX	-	-	2	-
HAOJIN, KUBA, RKS, SKYJET, LETBE, AJS	2	-	2	-
HAOJIN, LETBE, KUBA, RKS, SKYJET	11	-	25	-
HARLEY DAVIDSON	2	26	15	65
HONDA	1,188	59	2,930	162
HUSQVARNA	9	7	18	18
INDIAN MOTORCYCLE	5	-	9	-
JIAJUE, Joyrace, MAXON, Gineva Moto, ASUS, TURBHO, BTC, AGM, ROMET MOTORS, ROUTER, ZIPP, TOROS	39	-	90	-
JNEN, JUNENG, ZIPP, MOTORAN, HORS, FLEX TECH, ALPHA-MOBIL, ROUTER, PEDA MOTOR, PEDA, APACHI, ARORA	8	-	27	-
JNEN, JUNENG, ZIPP, MOTORAN, HORS, FLEX TECH, RAZZO, TOROS, ONE, JUNAK	-	-	1	-
JNEN, JUNENG, ZIPP, MOTORAN, ONE, RAZZO, FLEX TECH, TOROS, JUNAK, TURBHO, PEZAL, ALPHA-MOBIL	9	-	31	-
JNEN, JUNENG, ZIPP, MOTORAN, PUZEY, ALPHA-MOBIL, HORS, ROMET, JST, JMT, PEDA MOTOR, PEDA, APACHI	8	-	22	-
JONWAY, JMSTAR, SHENKE, HUIBANG	-	-	1	-
KAMAX	-	-	1	-
KAWASAKI	20	9	49	20
KEEWAY	8	-	33	-
KEEWAY, JINLANG, ARIIC, ARORA, KL	2	-	2	-
KEEWAY, KUBA	-	-	1	-
KEEWAY, LONGJIA	-	-	1	-
KEEWAY, ORCAL, NECO, ALFASCOOTERS	6	-	16	-
KEEWAY, RKS, KUBA, SKYJET, STELS, MORBIDELLI	25	-	55	-

Table 7 (cont)

Sales of new and used motorcycles by make or manufacturer: March 2026 and January - March 2026

Make	Motorcycles			
	March		January - March	
	new	used	new	used
KTM	50	23	110	80
KUBA, RKS, SKYJET, LETBE	4	-	7	-
KYMCO	69	28	176	68
LEIMO, ZF-KY, HUAWIN, ARORA, MOJITO	-	-	1	-
LETBE, HAOJIN, KUBA, RKS, SKYJET, RKS LETBE	51	-	78	-
LEXMOTO, ROMET, NECO, LUXXON, PRIKE, MAXON	40	-	108	-
LIFAN, QIPAI, SKYGO, TAKTAS, TAKTAS MOTOR	8	-	23	-
LIVEWIRE	1	-	1	-
LOJO, RAINWOLL	-	-	1	-
LONGCIN, KINLON, LONGTING, KUBA, YUKI, MONDIAL, STMAX, KANUNI, MOTORAN, ASYA, QUSWA, PUMAREX, RALLY USA, MOD, CCM	1	-	1	-
LONGCIN, KUBA, RKS, ITALIKA, SUNRACE, SKY, MALAGUTI, SUPERBIKE, ROCKET, NOVELBAT, TIGERMOTO, GREEN	1	-	4	-
LONGCIN, VOGÉ, KUBA, RKS, ITALIKA, SUNRACE, SKY, MALAGUTI, SUPERBIKE, ROCKET, NOVELBAT, TIGREMOTO, GREEN	-	-	-	1
LONGCIN, VOGÉ, VOGÉPRO	151	-	375	-
LONGJIA, ORCAL, NECO, ALFASCOOTERS, VGA, ROMET MOTORS, BARTON MOTORS, OVER, CAROLYN, KANUNI, BTC	9	-	16	-
LONGJIA, ORCAL, NECO, VGA, ROMET MOTORS, DRAX, MONDIAL, JUNAK, ONLINE, MOTOWELL, JORDON, GABELLI	27	-	69	-
LONGJIA, VICTORIA, VICTORIA MOTORRAD, ORCAL, NECO, VGA, AGM, LAZIO, TNT MOTOR, MONDIAL	8	-	13	-
LONGJIA, VICTORIA, VICTORIA MOTORRAD, ORCAL, NECO, VGA, BTC, ALFASCOOTERS	56	-	191	-
LONGJIA, Zündapp, VGA, NECO, BTC, AGM, ALFASCOOTERS, ROMET MOTORS, Kudaki, BARTON MOTORS, OVER BIKES	2	-	5	-
LVNENG	1	-	4	-
LONGJIA, ZUNDAPP, VGA, NECO, BTC, ALFASCOOTERS, ROMET MOTORS	-	-	2	-
MACBOR, COLOVE, DAYTONA MOTORS, ZF-KY, online, KOVE	28	-	80	-
MACBOR, RVM, COLOVE, DAYTONA MOTORS, ZF-KY, online, KOVE	-	-	2	-
MALAGUTI	37	-	73	-
MBP, MORBIDELLI, KEEWAY, KUBA, RKS, STELS	3	-	20	-
MGK HM	64	-	143	-
MICRO	1	1	1	1
MODENAS	-	-	-	1
MORBIDELLI, KEEWAY, MBP, STELS, RKS	30	-	67	-
MOTO GUZZI	12	1	29	1
MOTO MORINI	7	1	13	1
MOTRON MOTORRAD, ZONGSHEN	-	-	1	-
MURTAS, VELIMOTOR, RONGJUE, PINK, BR SPORT, INVICTA ELECTRIC	-	-	1	-
MV AGUSTA	-	2	1	3
ODES	2	-	2	-
PEUGEOT	16	-	48	2
PIAGGIO	643	30	1,493	60
PILOTCAR	1	-	2	-
POLARIS	1	-	3	-
QJ, QJIANG, QJMOTOR, B MOTOBİ, QJTEC, LIFAN, GTS, DAYTONA MOTORS, SIMONINI MOTO, PINK, RKS	13	-	25	-
QJ, QJMOTOR, B MOTOBİ, QJTEC, RKS	226	-	490	-
QJ, QJMOTOR, B MOTOBİ, QJTEC, RKS, KUBA, SKYJET	37	-	64	-

Table 7 (cont)

Sales of new and used motorcycles by make or manufacturer: March 2026 and January - March 2026

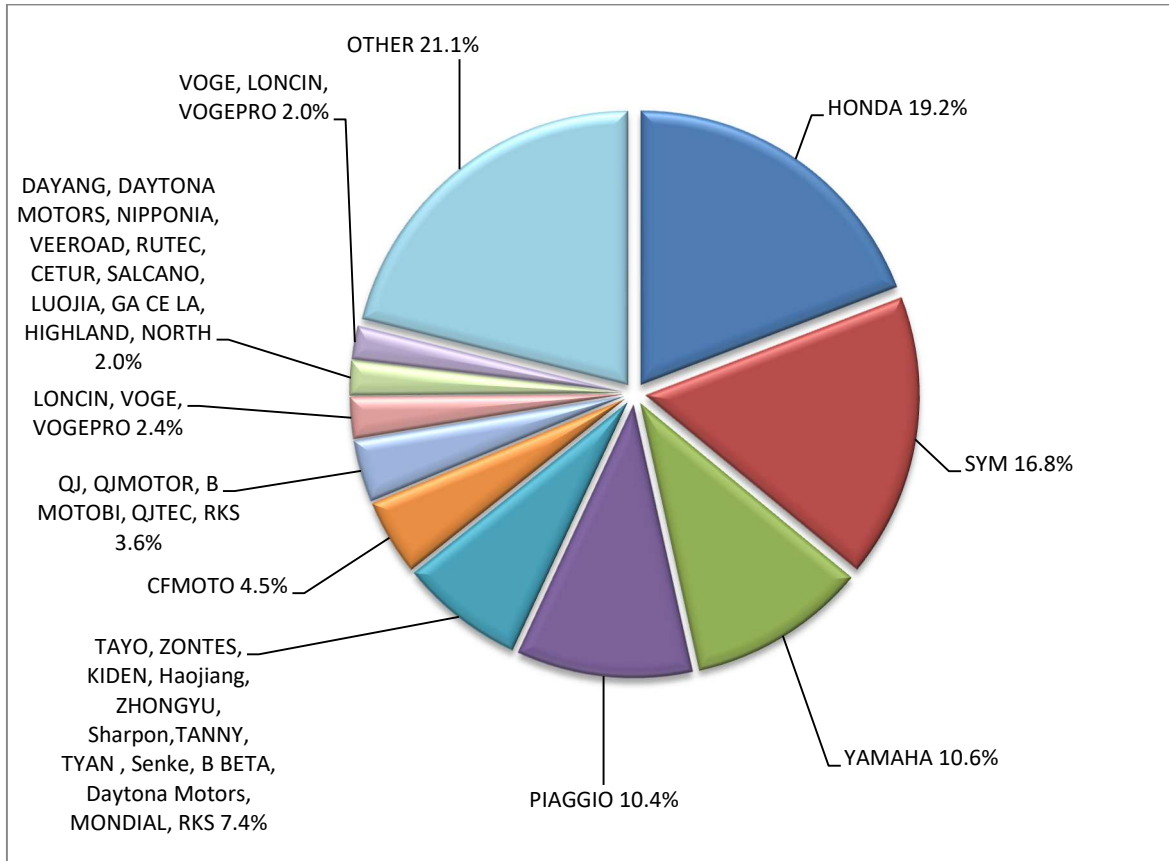
Make	Motorcycles			
	March		January - March	
	new	used	new	used
RATO, ALTAI, MIGLIORI, DOCKER, ASUS, AVETA, BRIXTON MOTORCYCLES, KUBA, RKS, GENERIC, LAMBDA MOTORCYCLES,	49	-	176	-
RATO, AVETA, NCX MOTO, ALTAI	1	-	5	-
RATO, YUKI, ASUS, DOCKER, MIGLIORI, VICTORY, AVETA, ALTAI, KUBA, RKS, BRIXTON MOTORCYCLES	7	-	33	-
REDMOTO	1	-	3	1
REGIS MOTORS	-	-	4	-
RENLI, ORION	-	-	7	-
RIDE	-	-	-	1
RIEJU	7	-	31	-
RIYA, RYMOTO, KUBA, Lexmoto, MITT, ALPHA MOTORS, IMF, ROMET, ZIPP, ARORA, ZORRO, MOJITO, MASH	4	-	10	-
RIYA, RYMOTO, KUBA, RKS, LEXMOTO, MITT, ALPHA MOTORS, IMF, ROMET, ZIPP, ARORA, ZORRO, MOJITO	2	-	3	-
ROYAL ENFIELD	58	1	145	2
Royalloy, Royal Alloy, RA	-	-	2	-
SACIN, SKYTEAM, SNAKEMOTORS, CONAN, KEEWAY, MONKEY BIKES, TRITON, ROMET, ZIPP, SUMCO, BLUROC MOTORCYCLES	5	-	6	-
SAIGE, STMAX, YUKI, KRAL, JPN, Mytos Motorcycles, VIKEBIKE	-	-	1	-
SAKURA, GOLDEN LION, ARTISAN, Fauro, ETALIAN, Viverra, Varaneo, Kito, E-mio, velca, E.F.O, E-KUMA	2	-	2	-
SAM	-	1	-	1
SCUTUM, ETRIX, SILENCE	1	-	1	-
SEGWAY	6	-	7	-
SHERCO	5	-	9	4
SHINERAY, SWM	-	-	3	-
SILENCE, SCUTUM, ETRIX	2	1	5	1
SKYTEAM, SACIN, CSR, METALCO, SOKUDO, BAZUKA, MINICO, MOTOSBASI, MOTOS BORDOY, SUMKO, ROXON, MONKEY BIKES	2	-	4	-
STARK	-	-	6	-
SUZUKI	44	13	163	37
SYM	1,040	9	2,442	28
TARO, TRMOTOR, CHUANL, JUNAK, BARTON MOTORS, ORCAL, Lexmoto, MITT, NECO, WOTTAN, MAXON, MAX-ON, MOTOBI	-	-	2	-
TAYO, HAOJIANG, ZHONGYU, THUMP, THUMPSTAR, KIDEN, ZONTES, Junak, SFNKF, TANNY, TYAN, ROMET	11	-	34	-
TAYO, ZONTES, KIDEN, Haojiang, ZHONGYU, Sharpon, TANNY, TYAN, Senke, B BETA, Daytona Motors, MONDIAL, RKS	456	-	585	-
TC-101, eBUDDY, Rino, CityArgo, RW E-TRUCK, Liddel, Butch-E, maxi van, maxi pickup, Reach, Rino, Elveon, eONE	3	-	3	-
TEYIN, TIANYING, MITT, SUMCO, RIYA, HUVE, SANBEN, TYM, APACHI, ISILAR APACHI	7	-	9	-
TEYIN, TIANYING, XINBEN, SANBEN, ALFASCOOTERS, Alpha Motors, APACHI, ARORA	5	-	7	-
TIANYING, RIYA, HONGYUNDA, TYM, HONLING, TAMCO, ALISON, DMK MOTORS, WLIE, LEEWAY, WLXQ, APGmoto	-	-	1	-
TIANYING, RIYA, HONGYUNDA, TYM, SANBEN, XINBEN, TAMCO, ALISON, DMK MOTORS, WLIE, LEEWAY	1	-	2	-
TIANYING, RIYA, SANBEN, TEYIN, TYM, Alfascoters, JORDON, YUKI, YAMASAKI	1	-	1	-
TM MOTO	-	-	1	-
TRIUMPH	29	3	98	8

Table 7 (cont)

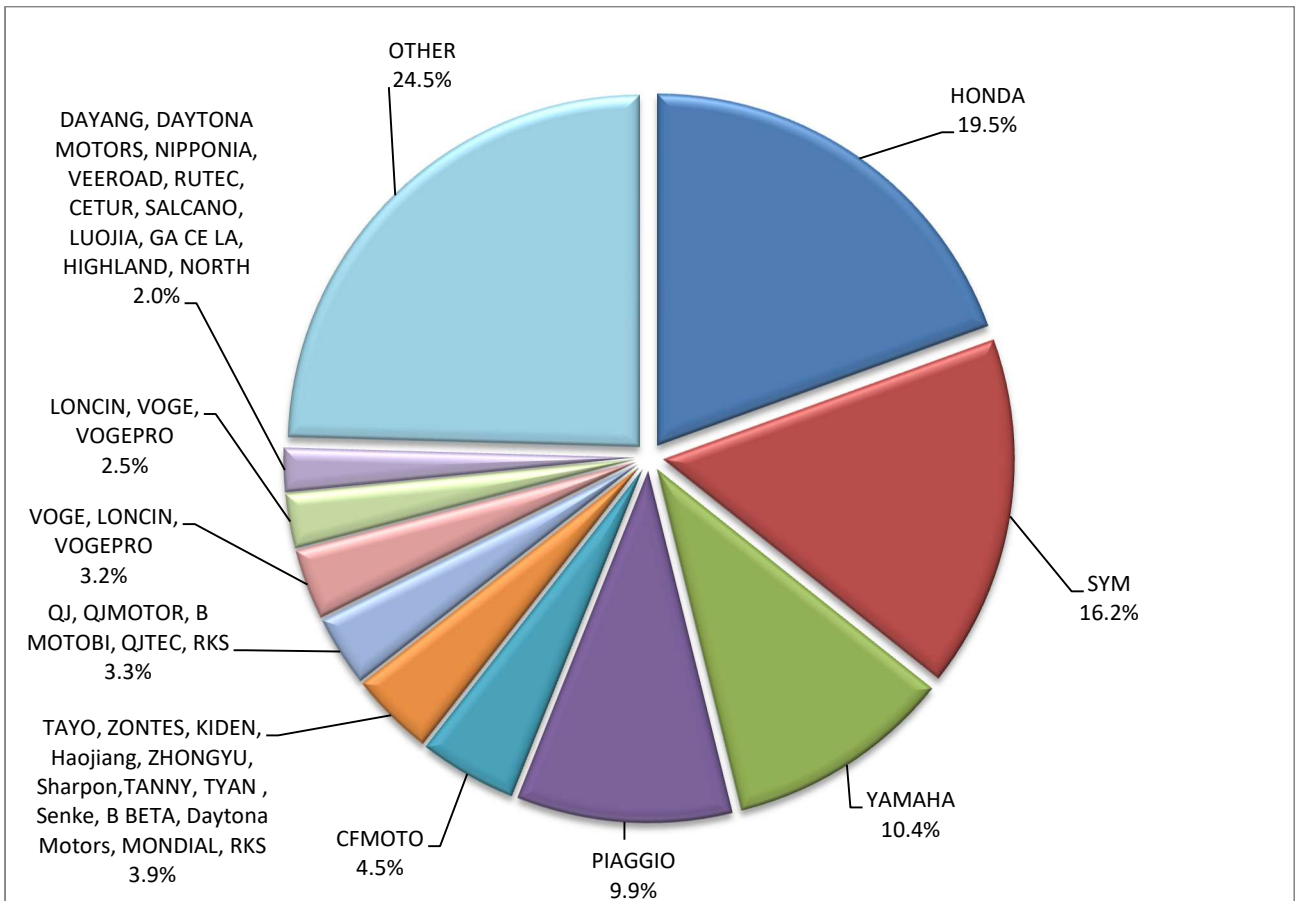
Sales of new and used motorcycles by make or manufacturer: March 2026 and January - March 2026

Make	Motorcycles			
	March		January - March	
	new	used	new	used
TRIUNI, TRIGOBIKE, LUCKING-MOPED, CSE-EV, JSE-MOTO, RETELLI, BIKEMITE, MOBI-E, U-MOB, VELCAMOTOR, DUKKA, LUYING	1	-	1	-
UM	5	-	18	-
VELIMOTOR, VOLTAMP, ALTUX, KKL HITECH, WHEELN WATER TECH, ALTUS, NUVEAU MONDE, EN MOTO, YOUNBEE MOTORS, KKL	-	-	1	-
VELOCIFERO	-	-	2	-
VMOTO, E-MAX, FMC, CSR, ROADSIGN, KENTOYA, JINYING, GOES, VETRIX, DAO, VENGO, TELL	-	2	-	2
VMOTO-SOCO, E-MAX, VMOTO, SUPER SOCO	8	-	14	-
VOGE, LONCIN, VOGEPRO	123	-	486	-
WANGYE, SANBEN, UM, KENOS, SUPERBYKE, MDC, MISTRAL	3	-	5	-
WONJAN, THRUST MOTOR, WMOTO, KEEWAY, TD	2	-	4	-
WUZHENG	-	-	1	-
WXEVERBRIGHT, EVERBRIGHT, VITALE	1	-	1	-
XEV, X, XEV YOYO	6	-	8	-
XINRI, SUNRA, APACHI, ISILDAR, ISILDAR APACHI, Wayscral, KRAL	2	-	2	-
YAMAHA	654	71	1,571	170
YUNLONG MOTORS, Pacta Car, DESNER, WANERS, MAXVIEW, Hudson, HudsonEV, MODENA	-	-	2	-
ZERO MOTORCYCLES	-	-	1	-
ZHIDOU, ZD, RKS	4	-	10	-
ZHONGNENG, ZNEN, AGM, BTC, CLS, COLIBRI, DAYTONA MOTORS, DERRACE, DOCKER, JM MOTORS, KUBA, La souris, LEXMOTO	9	-	23	-
ZNEN	-	1	-	1
ZONGSHEN, ZONGSHENCYCLONE, ZONSEN, Lexmoto, MONDIAL, SINNIS, SPARKSTER, MACBOR, VORTEX	-	-	2	-
ZXMCO, NIJ, DAYTONA MOTORS, PINK	1	-	1	-
TOTAL	6,193	352	15,047	951

Graph 13. Sales of new motorcycles (March 2026)



Graph 14. Sales of new motorcycles (January – March 2026)



EXPLANATORY NOTES

Survey on the issuing of new road motor vehicle circulation licenses	The survey on the issuing of new motor vehicle circulation licenses is a census survey. The released data give information, at country level, on the brand and type of the motor vehicle, as well as whether it is new or used. The survey does not include vehicles that move on rails, trolley busses, agricultural tractors and machinery. In addition, the following are excluded: all motor vehicles of the Armed Forces, Police, Fire Brigade, State Services, Diplomatic Corps, Foreign Missions, and Invalids of Wars, as well as motorcycles with a cylinder capacity less than 50 cc.
Legal basis	Law 3832/2010
Reference Period	March 2026
Coverage	The production of monthly data is based on the registers held by the Ministry of Infrastructure, Transport and Networks, which records all the monthly changes observed in the vehicle registration licenses at country level.
Definitions	<p>Road motor vehicle is any vehicle that, irrespective of the number of wheels, is moved by an engine and is designed to transport persons or cargo or both of them, either they are on the same single vehicle or on a trailer carried by the main motor vehicle.</p> <p>New road motor vehicle is any motor vehicle that is registered for the first time in Greece during the reference month and has not been put into circulation in any other country.</p> <p>Used motor vehicle is any motor vehicle that is registered for the first time in Greece and has been imported as a used one from abroad</p> <p>Passenger motor vehicle: it is a motor vehicle designed to carry mostly people, having no more than 9 seats, including the driver's seat.</p> <p>Bus: it is a motor vehicle, which is designed to carry mostly people, having more than 10 seats, including the driver's seat. In the corresponding tables of this announcement, this category also includes articulated buses.</p> <p>Lorry: it is motor vehicle designed to carry mostly cargo. In the corresponding tables of this announcement, this category also includes tractors, tow trucks, articulated tractors, and trucks with trailers.</p> <p>Motorcycle: any two-wheeled motor vehicle, with or without sidecar, with maximum authorized design speed over 45 km/h, or in case it is powered by a combustion engine, with a cylinder capacity of 50 cc or over. In the corresponding tables of this announcement, this category also includes the three-wheeled motor vehicles – motor tricycles.</p> <p>Tricycle motor vehicle: it is a motor vehicle with three symmetrical wheels with maximum authorized design speed over 45 km/h, or in case it is powered by a combustion engine, with a cylinder capacity over the 50 cc. This category also includes four-wheel vehicles, except the light four-wheel motorcycles, whose empty vehicle tare (excluding the weight of the fuel or mixture of fuel-oil or the weight of the batteries for electric cars) is up to 400 kg in the case the vehicle is designed for passenger use or up to 550 kg in case the vehicle is designed to carry cargo and whose engine is up to 15KW.</p>
Methodology	Exhaustive Survey. The primary data derive from the Ministry of Infrastructure, Transport and Networks and are based on the issuing of new circulation licenses as they are registered by the Regional Offices for Transport and Communications.
References	More information (graphs, tables) concerning the survey on the issuing of new motor vehicle circulation licenses are available on the webpage of ELSTAT, www.statistics.gr , under the link http://www.statistics.gr/en/statistics/-/publication/SME24/