



**SURVEYS ON PRE-PRIMARY AND PRIMARY EDUCATION  
(KINDERGARTENS AND PRIMARY SCHOOLS)  
END OF SCHOOL YEAR 2022/2023**

The Hellenic Statistical Authority (ELSTAT) announces data on Pre-Primary and Primary Education Statistics for the school year 2022/2023.

Based on the available survey data, the following observations can be made:

- a) In the school year 2022/2023 compared with the school year 2021/2022, **school units** decreased by 1.0% in Kindergartens and by 0.2% in Primary Schools (Tables 2 and 4, respectively).
- b) In the school year 2022/2023 compared with the school year 2021/2022, **teaching staff** increased by 9.6% in Kindergartens and decreased by 5.5% in Primary Schools (Tables 2 and 4, respectively).
- c) In the school year 2022/2023 compared with the school year 2021/2022, the **number of pupils enrolled** recorded a 2.3% decrease in Kindergartens and a 1.7% decrease in Primary Schools (Tables 3 and 5, respectively).
- d) In the school year 2022/2023 compared with the school year 2021/2022, the **number of graduates** decreased by 4.8% in Primary Schools (Table 6).
- e) The **ratio of teaching staff to pupils**, in the school year 2022/2023 was 1 to 8.2 in Kindergartens and 1 to 8.4 in Primary Schools; while in the school year 2021/2022 the corresponding ratio was 1 to 9.2 and 1 to 8.0, respectively (Tables 2, 3, 4 and 5).
- f) The **Region of Attiki** accounted for the largest share of pupils enrolled in pre-Primary and Primary education schools with 35.9% for Kindergartens and 35.8% for Primary Schools (Graphs 2 and 3, respectively).

**Information on methodological issues:**

Division of Sectoral Statistics  
Section of Statistics on Education & Sports  
Head of the Section: Dimitra Angelopoulou  
Tel: +30 213 135 2134  
[e-mail: d.angelopoulou@statistics.gr](mailto:d.angelopoulou@statistics.gr)

**Information for data provision:**

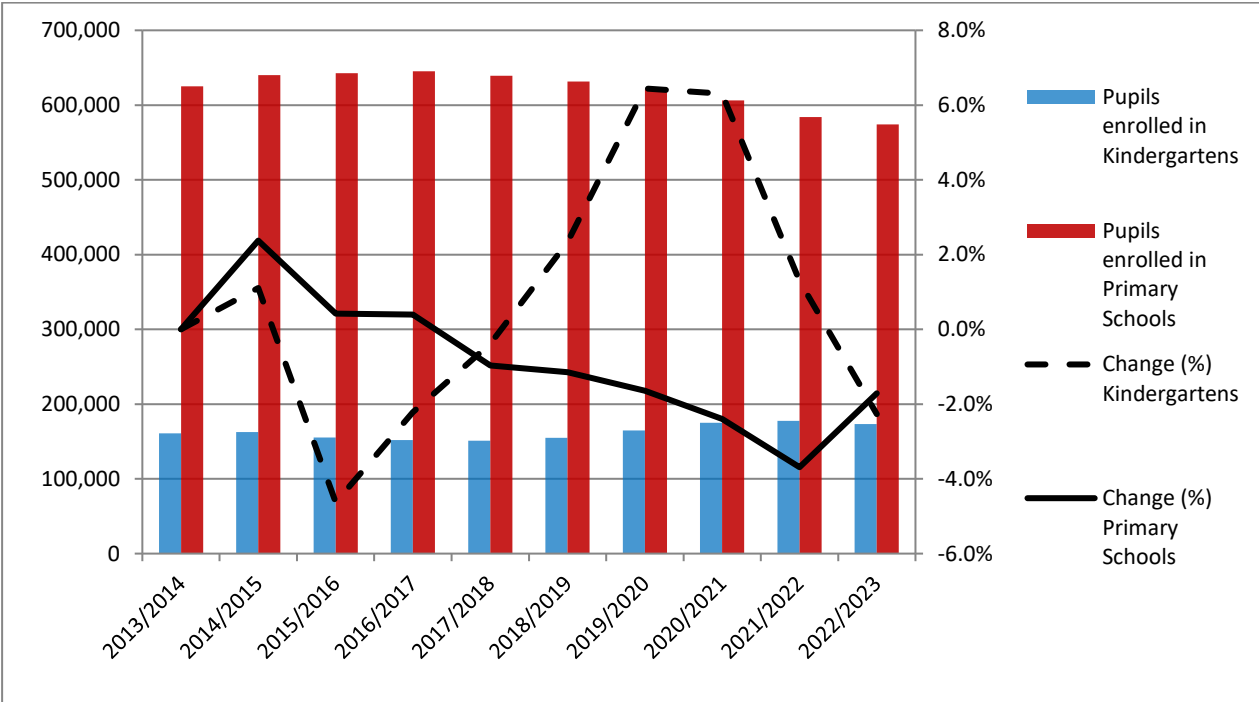
Tel. +30 213 135 2022, 2310  
[email: data.dissem@statistics.gr](mailto:data.dissem@statistics.gr)

Table 1 and Graph 1 depict the evolution of the pupil population of Kindergartens and Primary Schools during school years 2013/2014 to 2022/2023.

**Table 1**  
**Evolution of pupil population in Pre-Primary and Primary Education 2013/2014 - 2022/2023**

School Year	Number of Pupils	
	Kindergartens	Primary Schools
2013/2014	160,994	625,165
2014/2015	162,781	640,001
2015/2016	155,243	642,707
2016/2017	151,804	645,250
2017/2018	151,225	639,037
2018/2019	154,744	631,700
2019/2020	164,716	621,298
2020/2021	175,108	606,400
2021/2022	177,372	584,032
2022/2023	173,350	574,047

**Graph 1**  
**Evolution of pupil population in Pre-Primary and Primary Education 2013/2014 - 2022/2023**



## A. KINDERGARTENS

Tables 2 and 3 present data on the number of Kindergartens, teaching staff and pupils enrolled.

**Table 2. School Units and Teaching Staff<sup>1</sup> by Type of School Unit and NUTS 2 Region (Kindergartens)**

<i>By Type of School Unit</i>						
School Units	Number of School Units			Teaching Staff		
	2021/22	2022/23	Change (%)	2021/22	2022/23	Change (%)
<b>Public</b>	4,901	4,838	-1.3	17,488	19,188	9.7
<b>Private</b>	817	820	0.4	1,721	1,867	8.5
<b>TOTAL</b>	<b>5,718</b>	<b>5,658</b>	<b>-1.0</b>	<b>19,209</b>	<b>21,055</b>	<b>9.6</b>
<i>By NUTS 2 Region</i>						
NUTS 2 Region	Number of School Units			Teaching Staff		
	2021/22	2022/23	Change (%)	2021/22	2022/23	Change (%)
<b>Anatoliki Makedonia, Thraki</b>	315	311	-1.3	966	1,013	4.9
<b>Kentriki Makedonia</b>	987	956	-3.1	3,202	3,460	8.1
<b>Dytiki Makedonia</b>	178	171	-3.9	491	523	6.5
<b>Thessalia</b>	429	422	-1.6	1,165	1,238	6.3
<b>Ipeiros</b>	204	203	-0.5	584	581	-0.5
<b>Ionia Nisia</b>	146	146	0.0	489	539	10.2
<b>Dytiki Ellada</b>	396	391	-1.3	1,067	1,148	7.6
<b>Stereia Ellada</b>	309	307	-0.6	895	957	6.9
<b>Peloponnisos</b>	337	337	0.0	952	995	4.5
<b>Attiki</b>	1,599	1,602	0.2	6,348	7,254	14.3
<b>Voreio Aigaio</b>	150	146	-2.7	527	559	6.1
<b>Notio Aigaio</b>	230	228	-0.9	825	901	9.2
<b>Kriti</b>	438	438	0.0	1,698	1,887	11.1
<b>TOTAL</b>	<b>5,718</b>	<b>5,658</b>	<b>-1.0</b>	<b>19,209</b>	<b>21,055</b>	<b>9.6</b>

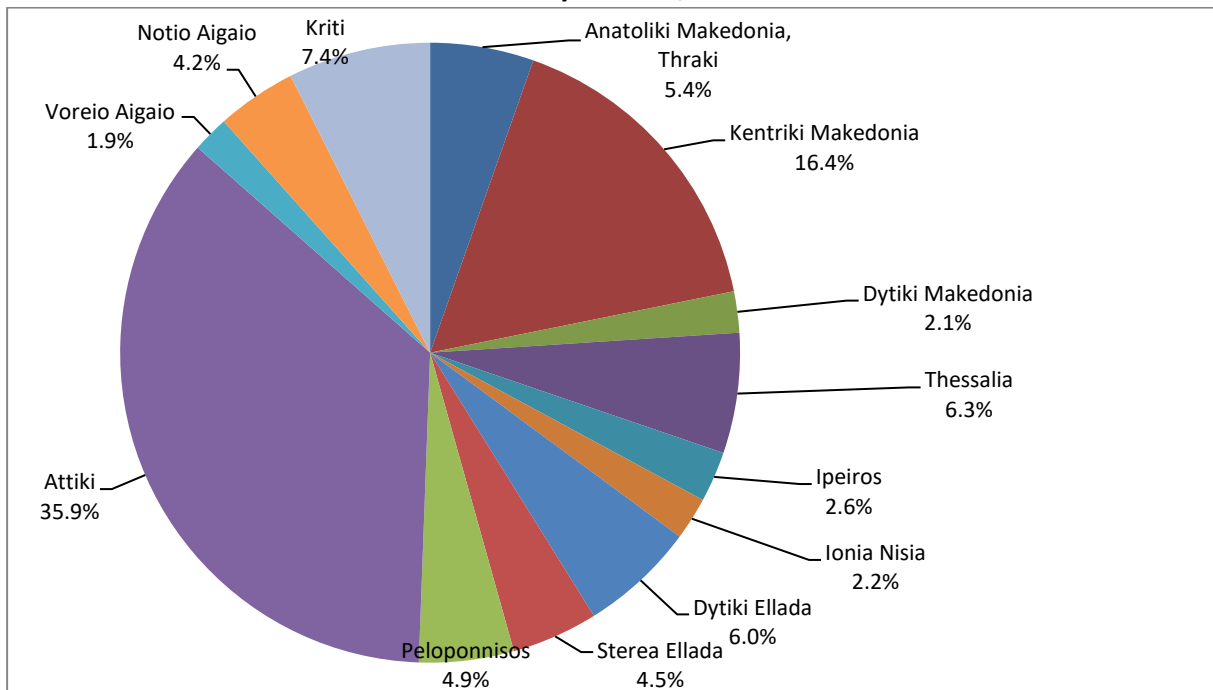
<sup>1</sup> Teaching staff includes teachers classified as absent. "Absent teachers" are the teachers with a fixed post in the school unit, who are absent for more than 20 days (due to illness, training, maternity leave, etc) and their replacement is pending, as well as the teachers who are seconded to other administrative posts of the Ministry of Education and Religious Affairs or elsewhere.

**Table 3. Pupils enrolled by Type of School Unit and NUTS 2 Region (Kindergartens)**

<i>By Type of School Unit</i>									
School Units	Greece total			Males			Females		
	2021/22	2022/23	Change (%)	2021/22	2022/23	Change (%)	2021/22	2022/23	Change (%)
Public	153,108	148,968	-2.7	79,109	77,052	-2.6	73,999	71,916	-2.8
Private	24,264	24,382	0.5	12,626	12,793	1.3	11,638	11,589	-0.4
<b>TOTAL</b>	<b>177,372</b>	<b>173,350</b>	<b>-2.3</b>	<b>91,735</b>	<b>89,845</b>	<b>-2.1</b>	<b>85,637</b>	<b>83,505</b>	<b>-2.5</b>
<i>By Region</i>									
NUTS 2 Region	Greece total			Males			Females		
	2021/22	2022/23	Change (%)	2021/22	2022/23	Change (%)	2021/22	2022/23	Change (%)
Anatoliki Makedonia, Thraki	9,462	9,366	-1.0	4,938	4,874	-1.3	4,524	4,492	-0.7
Kentriki Makedonia	29,338	28,464	-3.0	15,222	14,668	-3.6	14,116	13,796	-2.3
Dytiki Makedonia	3,854	3,725	-3.3	1,945	1,930	-0.8	1,909	1,795	-6.0
Thessalia	11,159	10,869	-2.6	5,767	5,702	-1.1	5,392	5,167	-4.2
Ipeiros	4,798	4,574	-4.7	2,477	2,327	-6.1	2,321	2,247	-3.2
Ionia Nisia	3,868	3,861	-0.2	2,051	1,989	-3.0	1,817	1,872	3.0
Dytiki Ellada	10,596	10,451	-1.4	5,470	5,388	-1.5	5,126	5,063	-1.2
Stereia Ellada	8,001	7,810	-2.4	4,182	4,063	-2.8	3,819	3,747	-1.9
Peloponnisos	8,759	8,566	-2.2	4,514	4,451	-1.4	4,245	4,115	-3.1
Attiki	63,685	62,276	-2.2	32,740	32,192	-1.7	30,945	30,084	-2.8
Voreio Aigaio	3,443	3,291	-4.4	1,798	1,712	-4.8	1,645	1,579	-4.0
Notio Aigaio	7,331	7,207	-1.7	3,833	3,793	-1.0	3,498	3,414	-2.4
Kriti	13,078	12,890	-1.4	6,798	6,756	-0.6	6,280	6,134	-2.3
<b>TOTAL</b>	<b>177,372</b>	<b>173,350</b>	<b>-2.3</b>	<b>91,735</b>	<b>89,845</b>	<b>-2.1</b>	<b>85,637</b>	<b>83,505</b>	<b>-2.5</b>

**Graph 2**

**Percentage distribution of pupils enrolled in Kindergartens, by NUTS 2 Region (public / private) school year 2022/2023**



## B. PRIMARY SCHOOLS

Tables 4, 5 and 6 present data on the number of Primary Schools, teaching staff, pupils enrolled and graduates.

**Tables 4. School Units and Teaching Staff<sup>2</sup> by Type of School Unit and NUTS 2 Region (Primary Schools)**

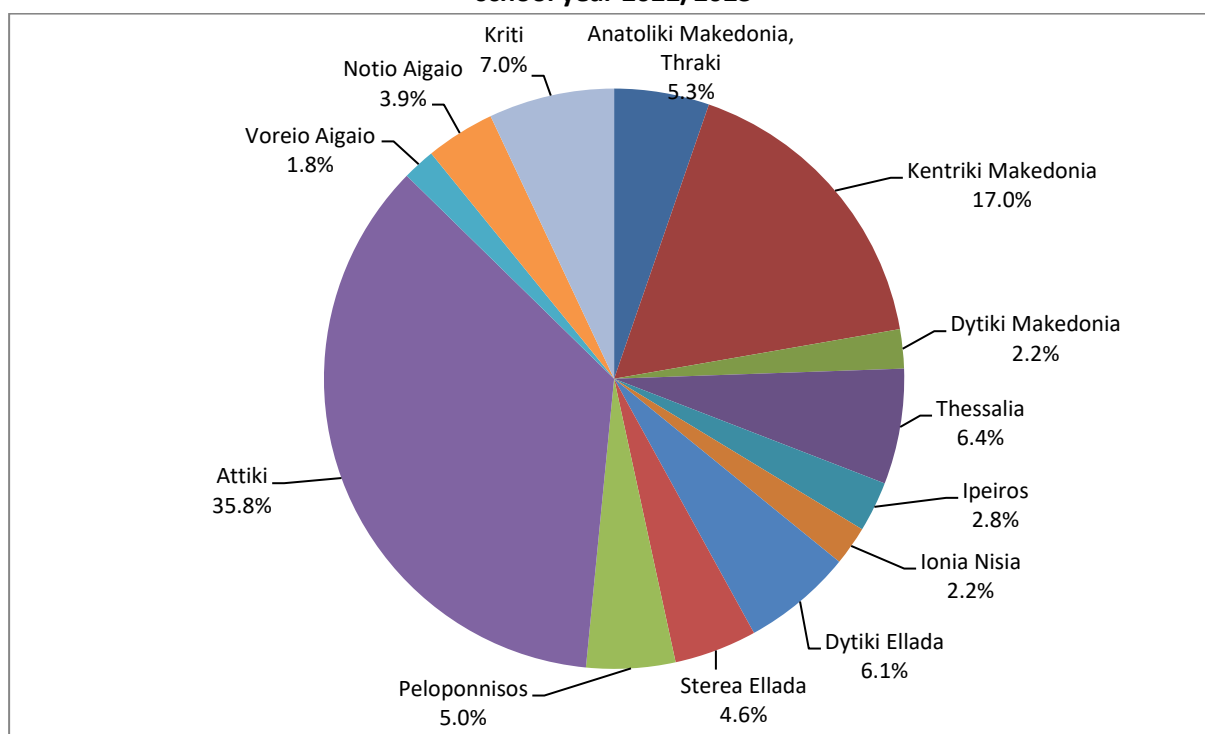
<i>By Type of School Unit</i>						
School Units	Number of School Units			Teaching Staff		
	2021/22	2022/23	Change (%)	2021/22	2022/23	Change (%)
<b>Public</b>	4,202	4,193	-0.2	68,928	64,789	-6.0
<b>Private</b>	159	161	1.3	3,629	3,800	4.7
<b>TOTAL</b>	<b>4,361</b>	<b>4,354</b>	<b>-0.2</b>	<b>72,557</b>	<b>68,589</b>	<b>-5.5</b>
<i>By NUTS 2 Region</i>						
NUTS 2 Region	Number of School Units			Teaching Staff		
	2021/22	2022/23	Change (%)	2021/22	2022/23	Change (%)
<b>Anatoliki Makedonia, Thraki</b>	315	313	-0.6	4,015	3,719	-7.4
<b>Kentriki Makedonia</b>	738	733	-0.7	12,525	11,808	-5.7
<b>Dytiki Makedonia</b>	151	151	0.0	2,024	1,860	-8.1
<b>Thessalia</b>	339	339	0.0	4,730	4,573	-3.3
<b>Ipeiros</b>	179	181	1.1	2,138	2,008	-6.1
<b>Ionia Nisia</b>	105	105	0.0	1,669	1,595	-4.4
<b>Dytiki Ellada</b>	353	351	-0.6	4,513	4,293	-4.9
<b>Stereia Ellada</b>	283	283	0.0	3,420	3,228	-5.6
<b>Peloponnisos</b>	259	259	0.0	3,509	3,265	-7.0
<b>Attiki</b>	1,006	1,007	0.1	24,198	22,982	-5.0
<b>Voreio Aigaio</b>	135	134	-0.7	1,620	1,561	-3.6
<b>Notio Aigaio</b>	183	184	0.5	2,611	2,495	-4.4
<b>Kriti</b>	315	314	-0.3	5,585	5,202	-6.9
<b>TOTAL</b>	<b>4,361</b>	<b>4,354</b>	<b>-0.2</b>	<b>72,557</b>	<b>68,589</b>	<b>-5.5</b>

<sup>2</sup> Teaching staff includes teachers classified as absent. "Absent teachers" are the teachers with a fixed post in the school unit, who are absent for more than 20 days (due to illness, training, maternity leave, etc) and their replacement is pending, as well as the teachers who are seconded to other administrative posts of the Ministry of Education and Religious Affairs or elsewhere.

**Table 5. Pupils enrolled by Type of School Unit and NUTS 2 Region (Primary Schools)**

<i>By Type of School Unit</i>									
School Units	Greece total			Males			Females		
	2021/22	2022/23	Change (%)	2021/22	2022/23	Change (%)	2021/22	2022/23	Change (%)
Public	543,398	531,762	-2.1	278,730	272,990	-2.1	264,668	258,772	-2.2
Private	40,634	42,285	4.1	20,904	21,657	3.6	19,730	20,628	4.6
<b>TOTAL</b>	<b>584,032</b>	<b>574,047</b>	<b>-1.7</b>	<b>299,634</b>	<b>294,647</b>	<b>-1.7</b>	<b>284,398</b>	<b>279,400</b>	<b>-1.8</b>
<i>By Region</i>									
NUTS 2 Region	Greece total			Males			Females		
	2021/22	2022/23	Change (%)	2021/22	2022/23	Change (%)	2021/22	2022/23	Change (%)
Anatoliki Makedonia, Thraki	30,943	30,420	-1.7	15,887	15,577	-2.0	15,056	14,843	-1.4
Kentriki Makedonia	99,281	97,376	-1.9	50,718	49,892	-1.6	48,563	47,484	-2.2
Dytiki Makedonia	13,096	12,526	-4.4	6,673	6,404	-4.0	6,423	6,122	-4.7
Thessalia	37,779	36,917	-2.3	19,466	19,059	-2.1	18,313	17,858	-2.5
Ipeiros	16,584	16,124	-2.8	8,454	8,262	-2.3	8,130	7,862	-3.3
Ionia Nisia	12,507	12,517	0.1	6,469	6,524	0.9	6,038	5,993	-0.7
Dytiki Ellada	35,996	35,181	-2.3	18,464	18,081	-2.1	17,532	17,100	-2.5
Stereia Ellada	27,002	26,430	-2.1	13,936	13,659	-2.0	13,066	12,771	-2.3
Peloponnisos	28,966	28,433	-1.8	14,866	14,562	-2.0	14,100	13,871	-1.6
Attiki	208,788	205,389	-1.6	107,175	105,367	-1.7	101,613	100,022	-1.6
Voreio Aigaio	10,603	10,427	-1.7	5,453	5,342	-2.0	5,150	5,085	-1.3
Notio Aigaio	22,014	22,122	0.5	11,365	11,422	0.5	10,649	10,700	0.5
Kriti	40,473	40,185	-0.7	20,708	20,496	-1.0	19,765	19,689	-0.4
<b>TOTAL</b>	<b>584,032</b>	<b>574,047</b>	<b>-1.7</b>	<b>299,634</b>	<b>294,647</b>	<b>-1.7</b>	<b>284,398</b>	<b>279,400</b>	<b>-1.8</b>

**Graph 3**  
**Percentage distribution of pupils enrolled in Primary Schools by NUTS 2 Region school year 2022/2023**



**Table 6. Graduates by Type of School Unit and NUTS 2 Region (Primary Schools)**

<i>By Type of School Unit</i>			
School Units	Graduates		
	2021/22	2022/23	Change (%)
Public	97,513	92,341	-5.3
Private	6,525	6,733	3.2
<b>TOTAL</b>	<b>104,038</b>	<b>99,074</b>	<b>-4.8</b>
<i>By Region</i>			
NUTS 2 Region	Graduates		
	2021/22	2022/23	Change (%)
Anatoliki Makedonia, Thraki	5,521	5,233	-5.2
Kentriki Makedonia	18,073	17,451	-3.6
Dytiki Makedonia	2,451	2,234	-8.9
Thessalia	6,982	6,524	-6.6
Ipeiros	3,090	2,790	-9.7
Ionia Nisia	2,151	2,170	0.9
Dytiki Ellada	6,417	6,277	-2.2
Stereia Ellada	4,772	4,506	-5.6
Peloponnisos	5,299	4,952	-6.5
Attiki	36,435	34,793	-4.8
Voreio Aigaio	1,820	1,688	-7.3
Notio Aigaio	3,847	3,661	-4.8
Kriti	7,180	6,795	-5.4
<b>TOTAL</b>	<b>104,038</b>	<b>99,074</b>	<b>-4.9</b>

## EXPLANATORY NOTES

**Surveys on Pre-Primary and Primary Education** Pre-Primary and Primary Education includes Kindergartens and Primary Schools. The relevant surveys are conducted on a yearly basis, with the aim of collecting data on the number of pupils enrolled, the school units and the number of teaching staff.

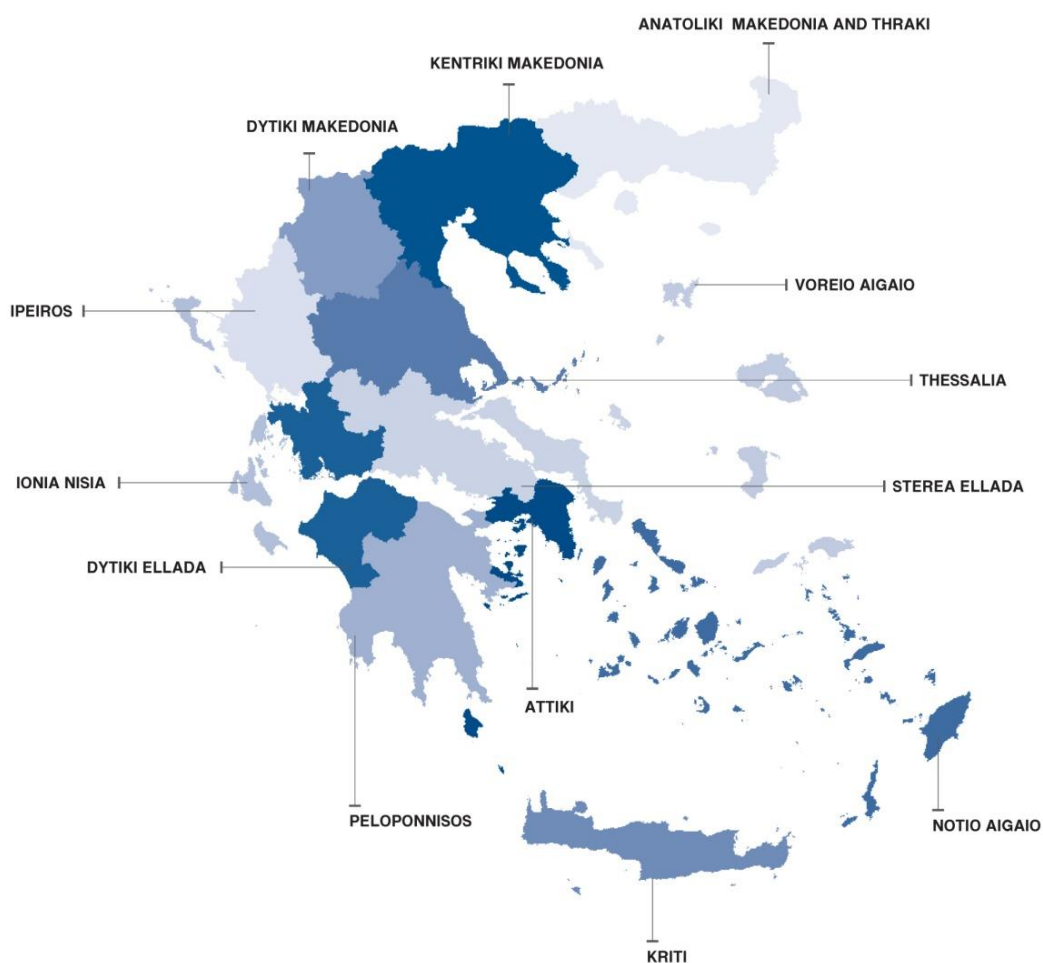
**Legal Framework** The surveys are conducted by virtue of Regulation 452/2008 of the European Parliament and the Council and implementing Regulation 912/2013 of the European Commission.

**Statistical Units** The statistical units are the school units.

**Coverage** Greece total.

**Geographical Classification** The geographical classification is based on Nomenclature of Territorial Units for Statistics.

Map of the 13 Regions (NUTS 2) of Greece





**Dissemination of results** The data are posted on a yearly basis on the website of ELSTAT and are published in a relevant Press Release.

**Reference period** The data of the surveys refer to the end of school year 2022/2023. For comparability reasons, the data of the end of the previous school year 2021/2022 are also provided.

**Methodology and coverage** Until the school year 2013/2014, the surveys on Pre-Primary and Primary Education used to be census, yearly surveys and they were conducted by ELSTAT.  
From the school year 2014/2015 to the school year 2020/2021, data were collected as follows:

- As regards public school units, the data were extracted from the “MySchool” e-platform of the Ministry of Education, Religious Affairs and Sports.
- As regards private school units, data were collected from the questionnaires that were sent to the relevant school units.

From the school year 2021/22 the data are extracted from the “MySchool” e-platform of the Ministry of Education, Religious Affairs and Sports for both public and private school units.

**References** More information, such as tables with the survey results, samples of questionnaires, etc, on the Survey on Pre-Primary and Primary Education can be found on the webpage of ELSTAT [www.statistics.gr](http://www.statistics.gr) and at the link: “Statistics” / Population and Social Conditions / Education / Primary Education / Kindergartens (Beginning – End of school year) or Primary Schools (Beginning – End of school year”).