



## CONSUMER PRICE INDEX: April 2024, annual inflation 3.1%

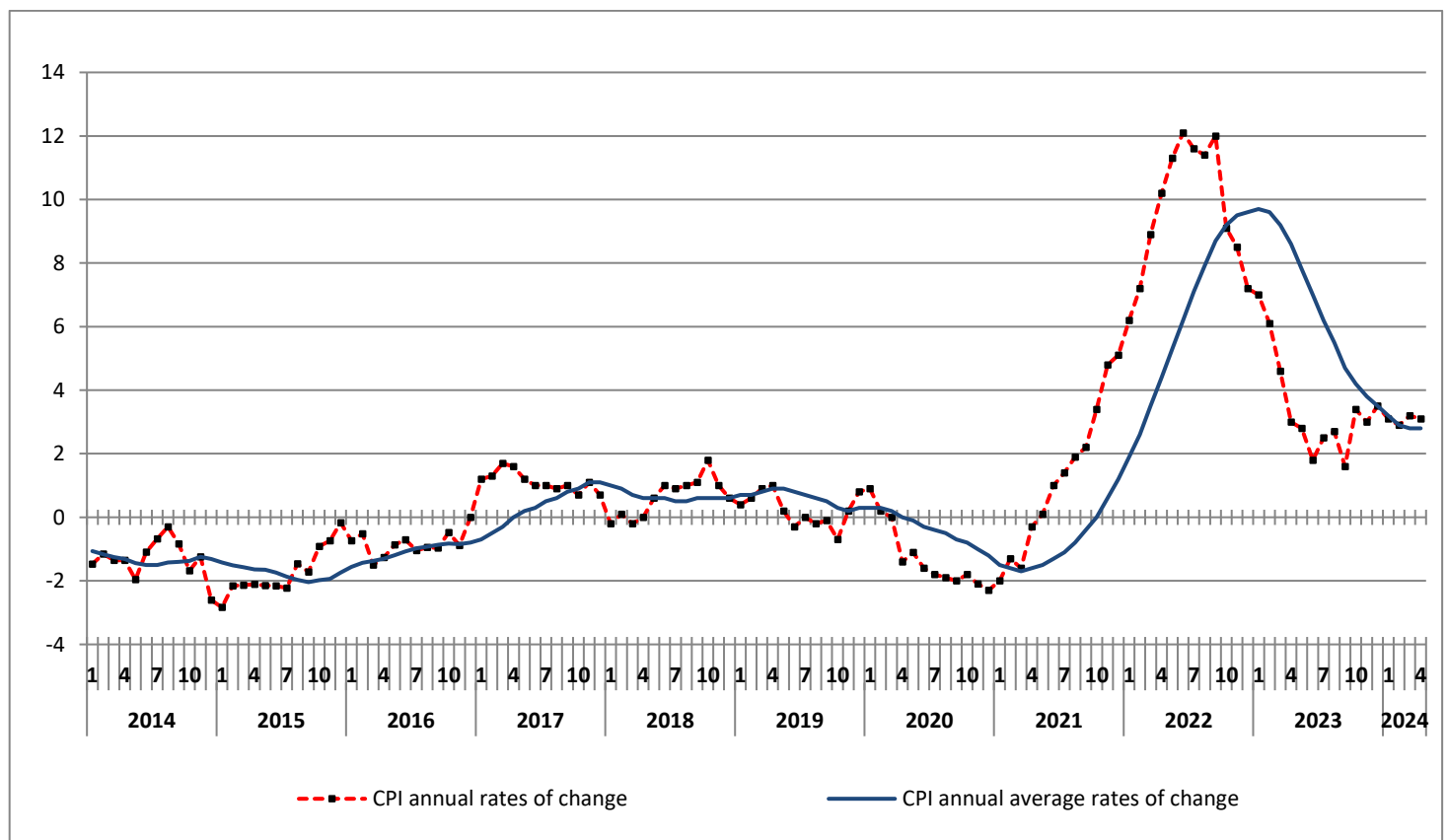
The evolution of the Consumer Price Index (CPI) of April 2024 (reference year 2020=100.0) is depicted as follows:

The CPI in April 2024 compared with April 2023, increased by 3.1%. In April 2023, the annual rate of change of the CPI was 3.0% (Table 2).

The CPI in April 2024 compared with March 2024, increased by 0.5%. In April 2023, the monthly rate of change of the CPI was 0.6% (Table 1).

The average CPI for the twelve - month period from May 2023 to April 2024, compared with the corresponding index for the period May 2022 to April 2023 increased by 2.8%. The annual rate of change of the average CPI between the twelve - month period May 2022 to April 2023 in comparison to the period May 2021 to April 2022 was 8.6% (Table 3).

**Graph 1. Annual and annual average rates of change (%) of CPI**



Information on methodological issues:  
Population, Employment and  
Cost of Living Statistics Division  
Section of Retail Price Indices  
Acting Head of Section: A. Kourtaki  
Tel: +30 213 135 2128  
email: [a.kourtaki@statistics.gr](mailto:a.kourtaki@statistics.gr)

Information for data provision:  
Tel: +30 213 135 2022, 2308, 2310  
email: [data.dissem@statistics.gr](mailto:data.dissem@statistics.gr)

## Analysis of changes of the CPI: April 2024

### I. Monthly rates of change: April 2024 compared with March 2024 (Tables 1, 4)

The 0.5% increase of the Overall CPI in April 2024, compared with the corresponding index in March 2024 is, mainly, due to the changes in the groups of goods and services as follows:

#### 1. An increase of:

- 0.5% in the group Alcoholic beverages and tobacco, due to the increase, mainly, in the prices of *alcoholic beverages (not served)*.
- 3.5% in the group Clothing and footwear, due to the recovery of prices up to normal levels as before the winter sales period.
- 0.4% in the group Household equipment, due to the increase, mainly, in the prices of *domestic cleaning and maintenance products*.
- 1.1% in the group Transport, due to the increase, mainly, in the prices of: *petrol, maintenance and repair of motor cars-motor cycles, tickets for passenger transport by air*.
- 0.5% in the group Communication, due to the increase, mainly, in the prices of *telephone services*.
- 0.7% in the group Hotel-Cafés-Restaurants, due to the increase, mainly, in the prices of *hotels-motels-inns*.
- 1.1% in the group Miscellaneous goods and services, due to the increase, mainly, in the prices of *motor vehicle insurance*.

#### 2. A decrease of:

- 0.6% in the group Housing, due to the decrease, mainly, in the prices of *electricity*.

## II. Annual rates of change: April 2024 compared with April 2023 (Tables 2, 5)

The 3.1% increase of the Overall CPI in April 2024, compared with the corresponding index in April 2023 is, mainly, due to the changes in the groups of goods and services as follows:

### 1. An increase of:

- 5.4% in the group Food and non-alcoholic beverages, due to the increase, mainly, in the prices of: *rice, meat, fresh fish, olive oil, fruit, vegetables, sugar-chocolates-sweets-ice creams, food n.e.c., mineral water-refreshments-fruit juices*. This increase was partly offset by the decrease, mainly, in the prices of: *bread, pasta products and couscous, milk-cheese and eggs, other edible oils*.
- 2.6% in the group Alcoholic beverages and tobacco, due to the increase, mainly, in the prices of *alcoholic beverages (not served)*.
- 4.0% in the group Clothing and footwear, due to the increase in the prices of clothing and footwear.
- 0,1% in the group Household equipment, due to the increase, mainly, in the prices of *domestic services*. This increase was partly offset by the decrease, mainly, in the prices of *non-durable household articles*.
- 3.6% in the group Health, due to the increase, mainly, in the prices of: *pharmaceutical products, medical-dental and paramedical services, hospital care*.
- 3.2% in the group Transport, due to the increase, mainly, in the prices of: *new motor cars, second hand motor cars, spare parts and accessories for motor cars, fuels and lubricants, maintenance and repair of motor cars-motor cycles, tickets for passenger transport by air*.
- 2.1% in the group Recreation and culture, due to the increase, mainly, in the prices of: *information processing equipment, small recreational items-flowers-pets, cinemas-theatres, newspapers-books and stationary, package holidays*. This increase was partly offset by the decrease, mainly, in the prices of *major durables for recreation and culture*.
- 3.5% in the group Education, due to the increase, mainly, in the prices of: *fees of pre-primary and primary education, fees of secondary education, fees of tertiary education*.
- 5.2% in the group Hotel-Cafés-Restaurants, due to the increase, mainly, in the prices of: *restaurants-confectioneries-cafes-buffets, hotels-motels-inns*.
- 2.3% in the group Miscellaneous goods and services, due to the increase, mainly, in the prices of: *hairdressing salons and personal grooming establishments, private insurance connected with health, motor vehicle insurance*. This increase was partly offset by the decrease, mainly, in the prices of *other appliances and articles for personal care*.

### 2. A decrease of:

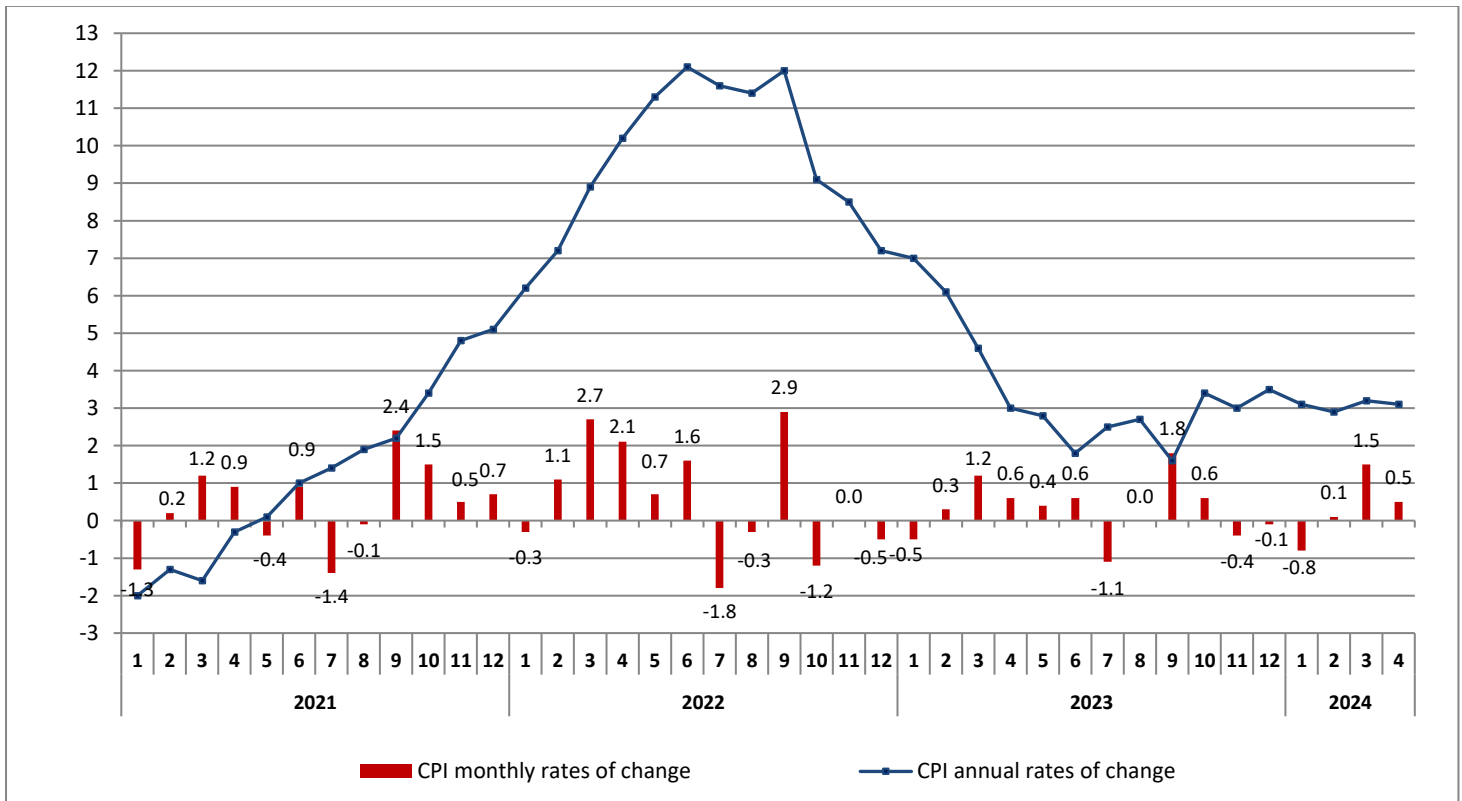
- 0.5% in the group Housing, due to the increase, mainly, in the prices of: *electricity, natural gas*. This decrease was partly offset by the increase, mainly, in the prices of: *rentals for dwellings, services for the repair and maintenance of the dwelling, heating oil*.
- 1.3% in the group Communication, due to the decrease, mainly, in the prices of *telephone services*.

**Table 1. Monthly rates of change of CPI**  
(Reference year: 2020=100.0)

Main groups of goods and services	Weights 2024 (%)	2024	2024	Rate of change %	2023	2023	Rate of change %
		April	March		April	March	
1. Food & non-alcoholic beverages	219.79	129.66	129.72	0.0	123.05	123.18	-0.1
2. Alcoholic beverages and tobacco	38.06	106.27	105.69	0.5	103.53	103.83	-0.3
3. Clothing and footwear	55.22	124.27	120.08	3.5	119.48	113.51	5.3
4. Housing	123.21	118.65	119.38	-0.6	119.25	118.63	0.5
5. Household equipment	45.50	114.87	114.35	0.4	114.81	114.37	0.4
6. Health	77.83	109.70	109.66	0.0	105.91	105.00	0.9
7. Transport	134.57	124.36	123.03	1.1	120.48	120.65	-0.1
8. Communication	42.81	92.60	92.15	0.5	93.83	93.86	0.0
9. Recreation and culture	41.74	106.35	106.19	0.2	104.16	102.83	1.3
10. Education	43.71	106.73	106.73	0.0	103.12	103.12	0.0
11. Hotels-Cafés-Restaurants	107.38	117.77	116.92	0.7	111.97	109.88	1.9
12. Miscellaneous goods and services	70.19	108.02	106.80	1.1	105.57	105.39	0.2
<b>Overall Index</b>	<b>1000.00</b>	<b>117.96</b>	<b>117.39</b>	<b>0.5</b>	<b>114.45</b>	<b>113.73</b>	<b>0.6</b>

Note: The indices are rounded up to two decimal figures when published and percentage changes up to one decimal figure when published.

**Graph 2. Annual and monthly rates of change (%) of CPI**



**Table 2. Inflation – Annual rates of change of CPI****(Reference year: 2020=100.0)****I: April 2024/2023**

	Main groups of goods and services	April		Rate of change (%)	Impact
		2024	2023		
1.	Food and non-alcoholic beverages	129.66	123.05	5.4	1.1778
2.	Alcoholic beverages and tobacco	106.27	103.53	2.6	0.1014
3.	Clothing and footwear	124.27	119.48	4.0	0.2118
4.	Housing	118.65	119.25	-0.5	-0.0549
5.	Household equipment	114.87	114.81	0.1	0.0024
6.	Health	109.70	105.91	3.6	0.2731
7.	Transport	124.36	120.48	3.2	0.4529
8.	Communication	92.60	93.83	-1.3	-0.0507
9.	Recreation and culture	106.35	104.16	2.1	0.0843
10.	Education	106.73	103.12	3.5	0.1259
11.	Hotels-Cafés-Restaurants	117.77	111.97	5.2	0.5770
12.	Miscellaneous goods and services	108.02	105.57	2.3	0.1677
<b>Overall Index</b>		<b>117.96</b>	<b>114.45</b>	<b>3.1</b>	

**II: April 2023/2022**

	Main groups of goods and services	April		Rate of change (%)	Impact
		2023	2022		
1.	Food and non-alcoholic beverages	123.05	110.47	11.4	2.3832
2.	Alcoholic beverages and tobacco	103.53	99.57	4.0	0.1403
3.	Clothing and footwear	119.48	113.19	5.6	0.3263
4.	Housing	119.25	137.68	-13.4	-2.3523
5.	Household equipment	114.81	103.48	10.9	0.4757
6.	Health	105.91	99.45	6.5	0.4814
7.	Transport	120.48	118.78	1.4	0.1975
8.	Communication	93.83	95.58	-1.8	-0.0739
9.	Recreation and culture	104.16	100.49	3.7	0.1264
10.	Education	103.12	100.93	2.2	0.0629
11.	Hotels-Cafés-Restaurants	111.97	103.18	8.5	0.8576
12.	Miscellaneous goods and services	105.57	99.22	6.4	0.4140
<b>Overall Index</b>		<b>114.45</b>	<b>111.08</b>	<b>3.0</b>	

Note: The indices are rounded up to two decimal figures when published and percentage changes up to one decimal figure when published.

**Table 3. Comparisons of the overall CPI**  
(Reference year: 2020=100.0)

Year and month	Overall Index	Monthly rates of change %	Annual rates of change Inflation %	Annual average index (moving average)	Annual average rates of change %
<b>2021 : 1</b>	98.52	-1.3	-2.0	99.84	-1.5
2	98.72	0.2	-1.3	99.73	-1.6
3	99.91	1.2	-1.6	99.59	-1.7
4	100.82	0.9	-0.3	99.57	-1.6
5	100.43	-0.4	0.1	99.58	-1.5
6	101.36	0.9	1.0	99.66	-1.3
7	99.96	-1.4	1.4	99.78	-1.1
8	99.83	-0.1	1.9	99.93	-0.8
9	102.19	2.4	2.2	100.11	-0.4
10	103.75	1.5	3.4	100.40	0.0
11	104.24	0.5	4.8	100.80	0.6
12	104.95	0.7	5.1	101.22	1.2
<b>Annual average</b>	<b>101.22</b>	-	-	<b>101.22</b>	<b>1.2</b>
<b>2022 : 1</b>	104.68	-0.3	6.2	101.74	1.9
2	105.84	1.1	7.2	102.33	2.6
3	108.75	2.7	8.9	103.07	3.5
4	111.08	2.1	10.2	103.92	4.4
5	111.80	0.7	11.3	104.87	5.3
6	113.62	1.6	12.1	105.89	6.2
7	111.54	-1.8	11.6	106.86	7.1
8	111.21	-0.3	11.4	107.81	7.9
9	114.48	2.9	12.0	108.83	8.7
10	113.16	-1.2	9.1	109.61	9.2
11	113.15	0.0	8.5	110.36	9.5
12	112.53	-0.5	7.2	110.99	9.6
<b>Annual average</b>	<b>110.99</b>	-	-	<b>110.99</b>	<b>9.6</b>
<b>2023 : 1</b>	111.99	-0.5	7.0	111.60	9.7
2	112.33	0.3	6.1	112.14	9.6
3	113.73	1.2	4.6	112.55	9.2
4	114.45	0.6	3.0	112.83	8.6
5	114.91	0.4	2.8	113.09	7.8
6	115.62	0.6	1.8	113.26	7.0
7	114.30	-1.1	2.5	113.49	6.2
8	114.26	0.0	2.7	113.74	5.5
9	116.34	1.8	1.6	113.90	4.7
10	117.00	0.6	3.4	114.22	4.2
11	116.57	-0.4	3.0	114.50	3.8
12	116.47	-0.1	3.5	114.83	3.5
<b>Annual average</b>	<b>114.83</b>	-	-	<b>114.83</b>	<b>3.5</b>
<b>2024 : 1</b>	115.50	-0.8	3.1	115.12	3.2
2	115.61	0.1	2.9	115.40	2.9
3	117.39	1.5	3.2	115.70	2.8
4	117.96	0.5	3.1	116.00	2.8

Note: The indices are rounded up to two decimal figures when published and percentage changes up to one decimal figure when published.

**Table 4. Major price changes from index comparison between  
April 2024 and March 2024 and their impact  
on the Overall CPI**

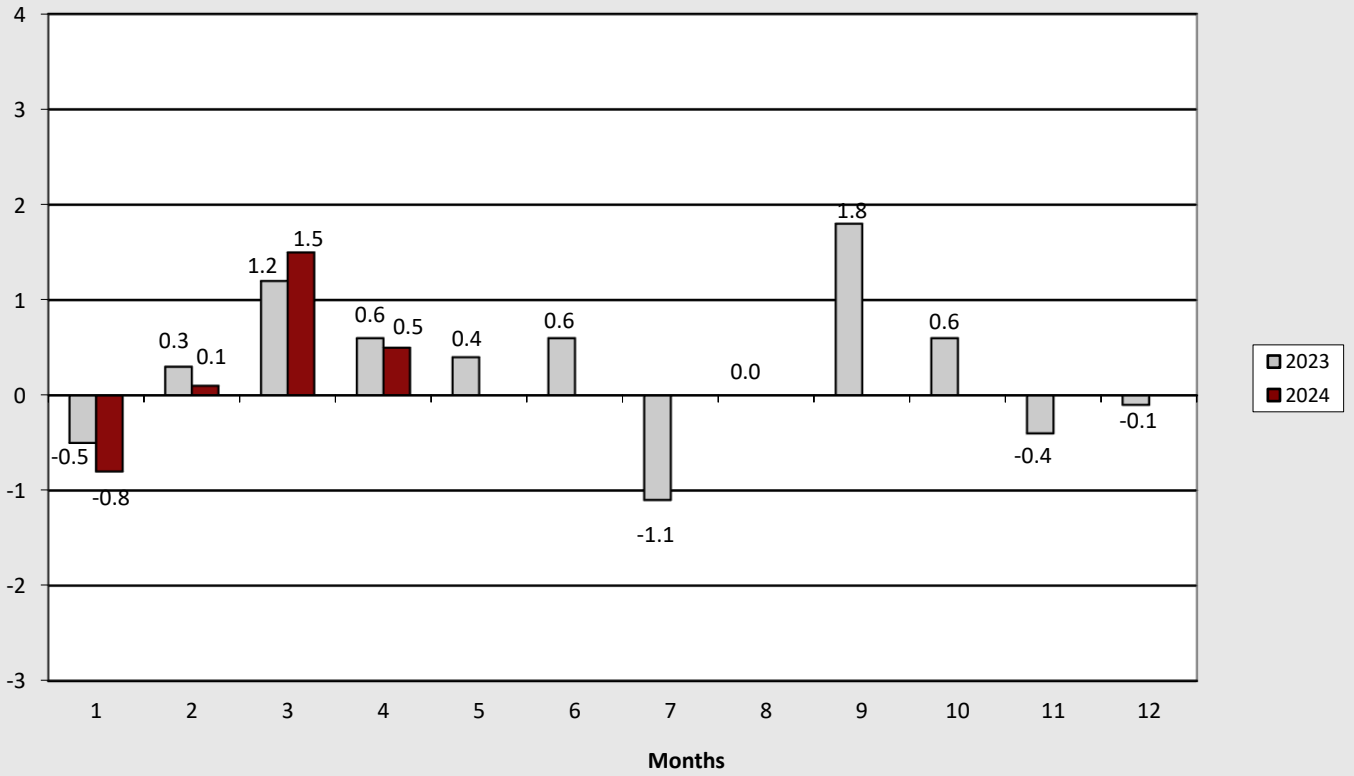
<b>Goods and services</b>	<b>Rate of change (%)</b>	<b>Impact</b>
Bread	-1.8	-0.03
Pasta products and couscous	-2.9	-0.01
Beef	-0.6	-0.01
Poultry	-1.5	-0.01
Fresh fish	-1.4	-0.02
Yoghurt	-2.1	-0.01
Eggs	-4.5	-0.02
Fresh fruit	-1.8	-0.03
Pork	2.1	0.02
Lamb and goat	6.2	0.03
Preserved or processed vegetables	5.0	0.04
Mineral water-refreshments-fruit juices	1.7	0.01
Alcoholic beverages (not served)	1.1	0.02
Electricity	-3.4	-0.09
Domestic cleaning and maintenance products	0.8	0.01
Petrol	2.6	0.12
Maintenance and repair of motor cars-motor cycles	1.8	0.01
Passenger transport by air	1.0	0.01
Telephone services	0.6	0.02
Hotels-motels-inns	14.5	0.07
Motor vehicle insurance	5.0	0.07
Recovery of prices up to normal levels before the winter sales period	-	0.20

**Table 5. Major price changes from index comparison between April 2024 and April 2023 and their impact on the Overall CPI**

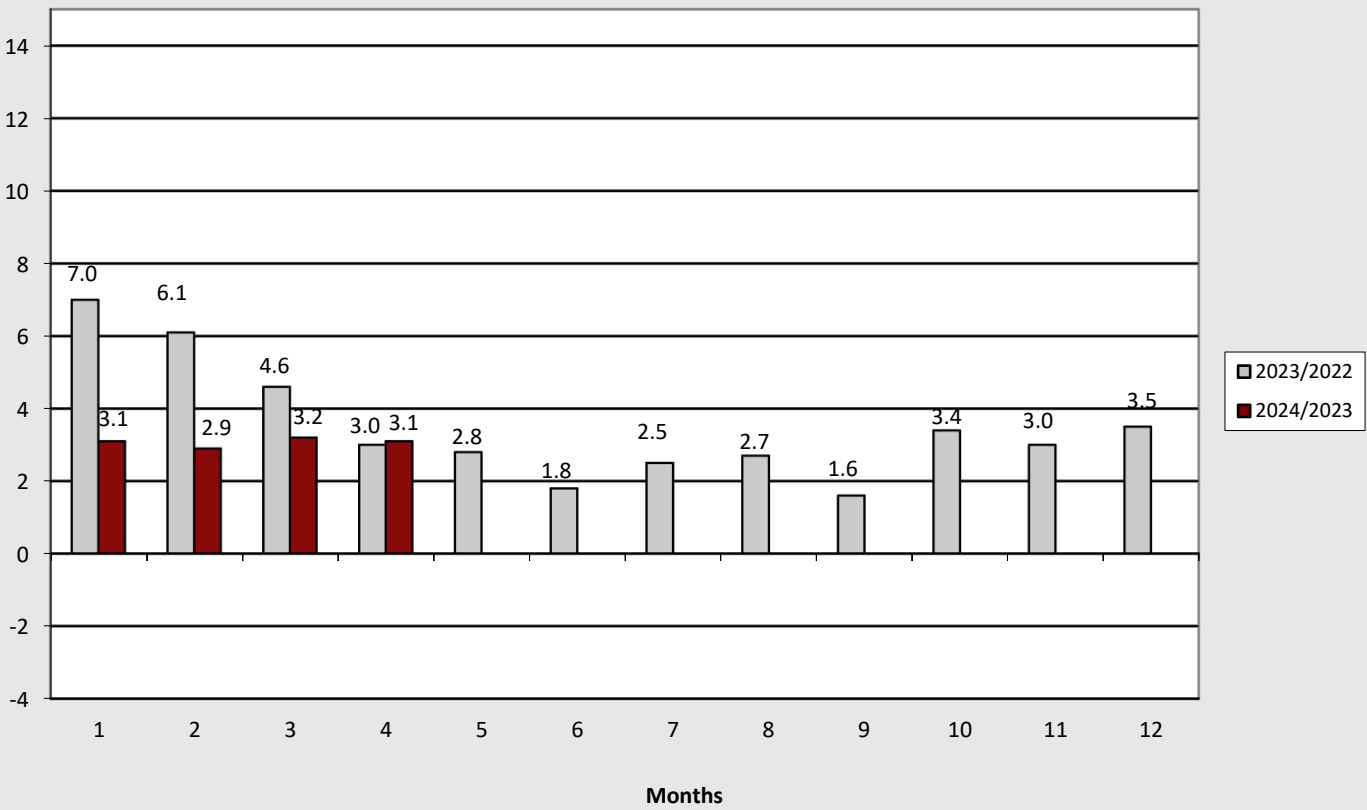
<b>Goods and services</b>	<b>Rate of change (%)</b>	<b>Impact</b>
Rice	8.5	0.02
Meat	3.2	0.15
Fresh fish	10.6	0.11
Olive oil	63.7	0.50
Fruit	11.6	0.18
Vegetables	6.1	0.18
Sugar-chocolates-sweets-ice creams	3.4	0.04
Food n.e.c.	3.3	0.02
Mineral water-refreshments-fruit juices	12.5	0.08
Bread	-0.7	-0.01
Pasta products and couscous	-3.5	-0.01
Milk-cheese and eggs	-1.2	-0.04
Other edible oils	-16.6	-0.03
Alcoholic beverages (not served)	5.8	0.10
Clothing and footwear	4.0	0.21
Electricity	-7.4	-0.23
Natural gas	-26.9	-0.10
Rentals for dwellings	4.3	0.15
Services for the repair and maintenance of the dwelling	3.2	0.01
Heating oil	6.3	0.11
Non-durable household articles	-0.9	-0.02
Domestic services	2.2	0.02
Pharmaceutical products	5.5	0.13
Medical-dental and paramedical services	2.5	0.05
Hospital care	3.4	0.09
New motor cars	1.1	0.02
Second hand motor cars	0.7	0.01
Spare parts and accessories of motor cars	2.9	0.01
Fuels and lubricants	2.3	0.14
Maintenance and repair of motor cars-motor cycles	3.5	0.02
Passenger transport by air	15.1	0.22
Telephone services	-1.4	-0.05
Information processing equipment	6.5	0.02
Small recreational items-flowers-pets	3.4	0.03
Cinemas-theatres	5.0	0.01
Newspapers, books and stationery	2.1	0.01
Package holidays	7.9	0.02
Major durables for recreation and culture	-1.4	-0.01
Pre-primary and primary education	4.0	0.04
Secondary education	3.6	0.07
Tertiary education	2.8	0.01
Restaurants-confectioneries-cafes-buffets	5.2	0.55
Hotels-motels-inns	7.3	0.02
Hairdressing salons and personal grooming establishments	3.6	0.04
Private insurance connected with health	14.0	0.08
Motor vehicle insurance	4.1	0.06
Other appliances and articles for personal care	-1.1	-0.04



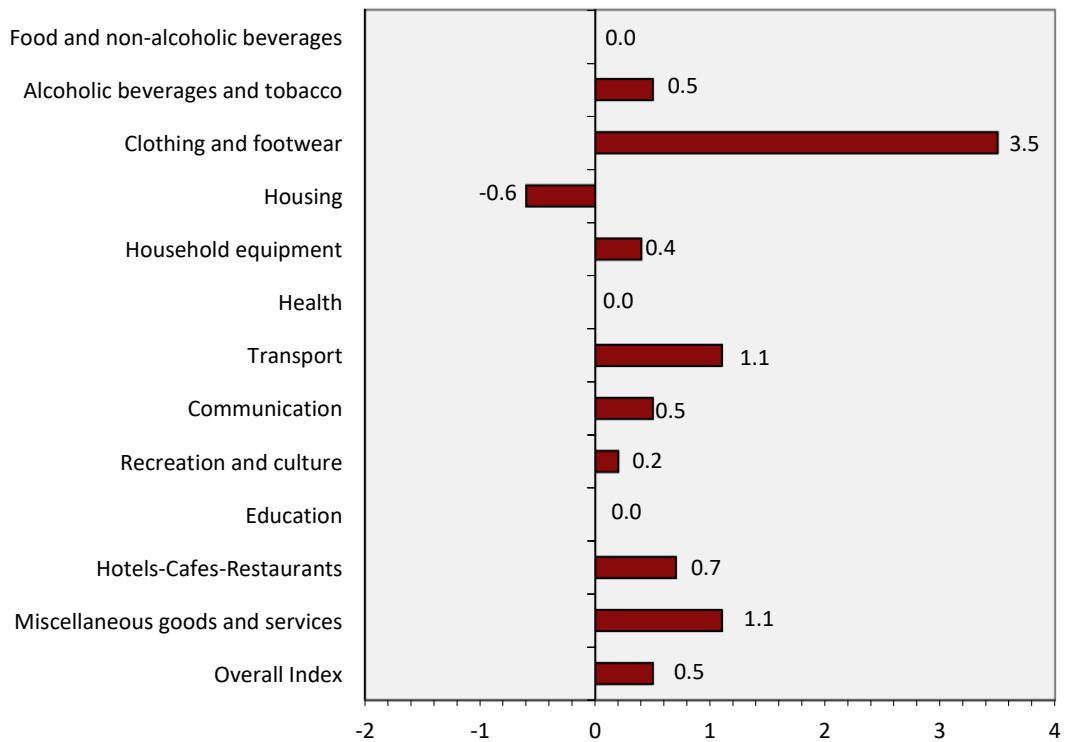
**Graph 3. Monthly rates of change (%) of the overall CPI, 2023 and 2024**



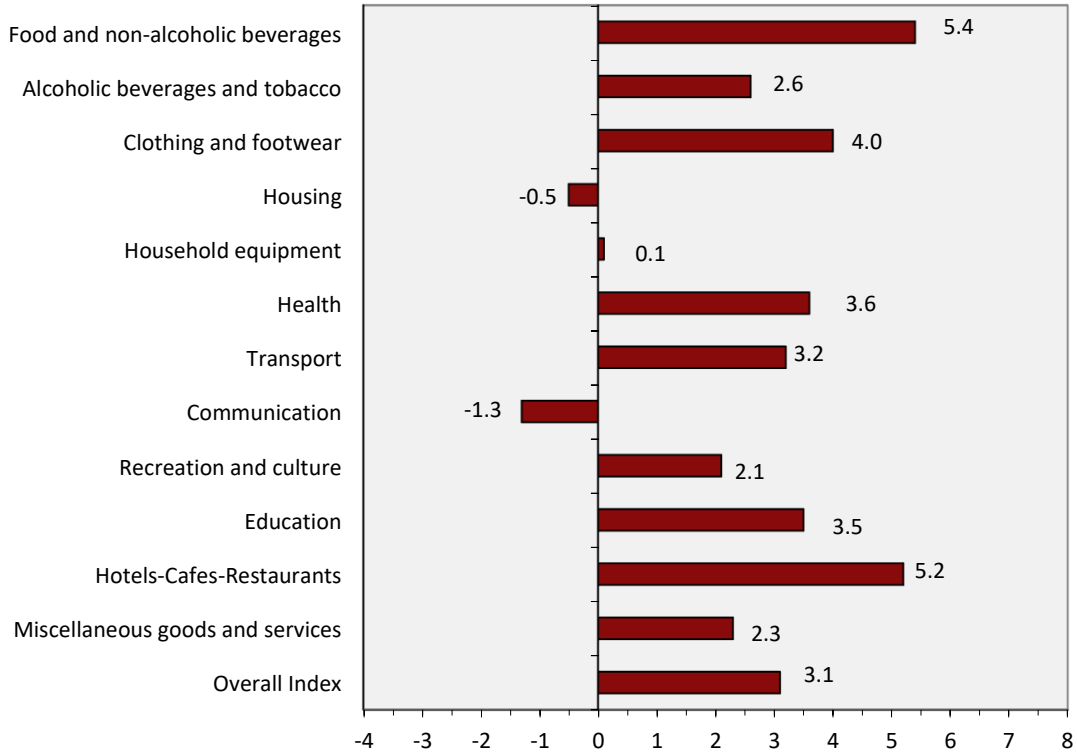
**Graph 4. Annual rates of change (%) of the overall CPI, 2023 and 2024**



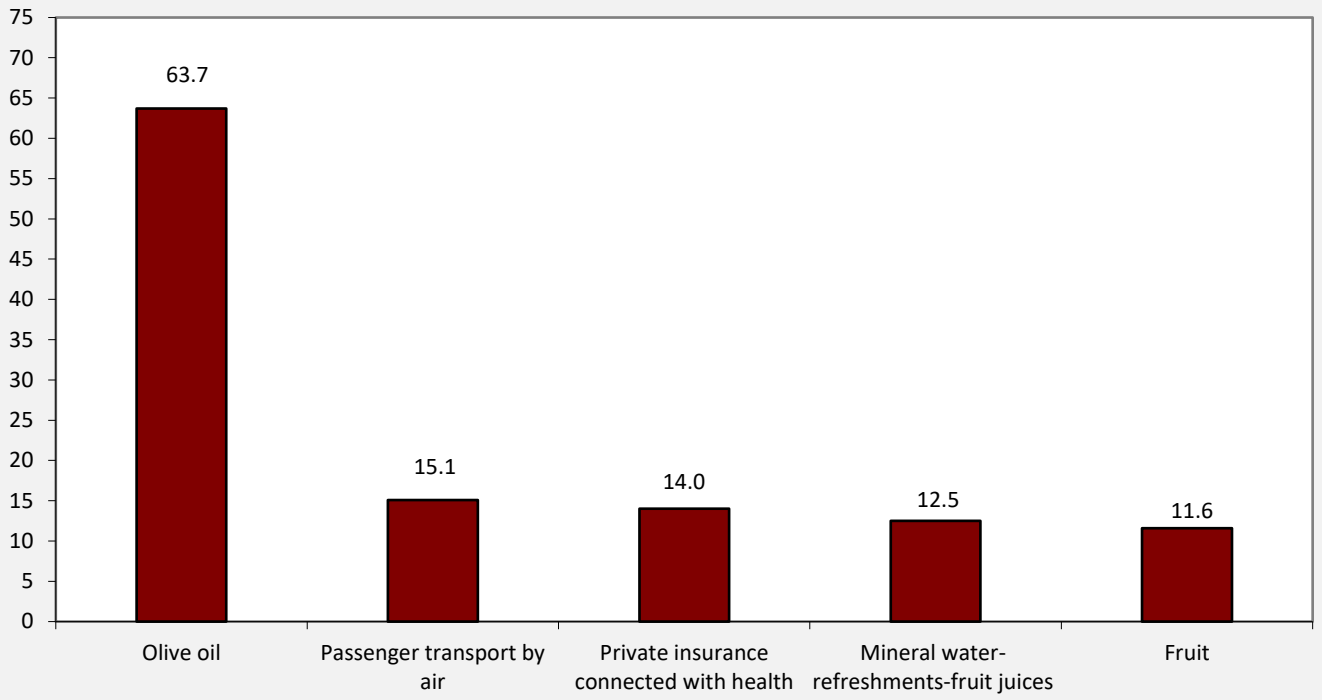
**Graph 5. Monthly rates of change (%) of CPI between April 2024 and March 2024**



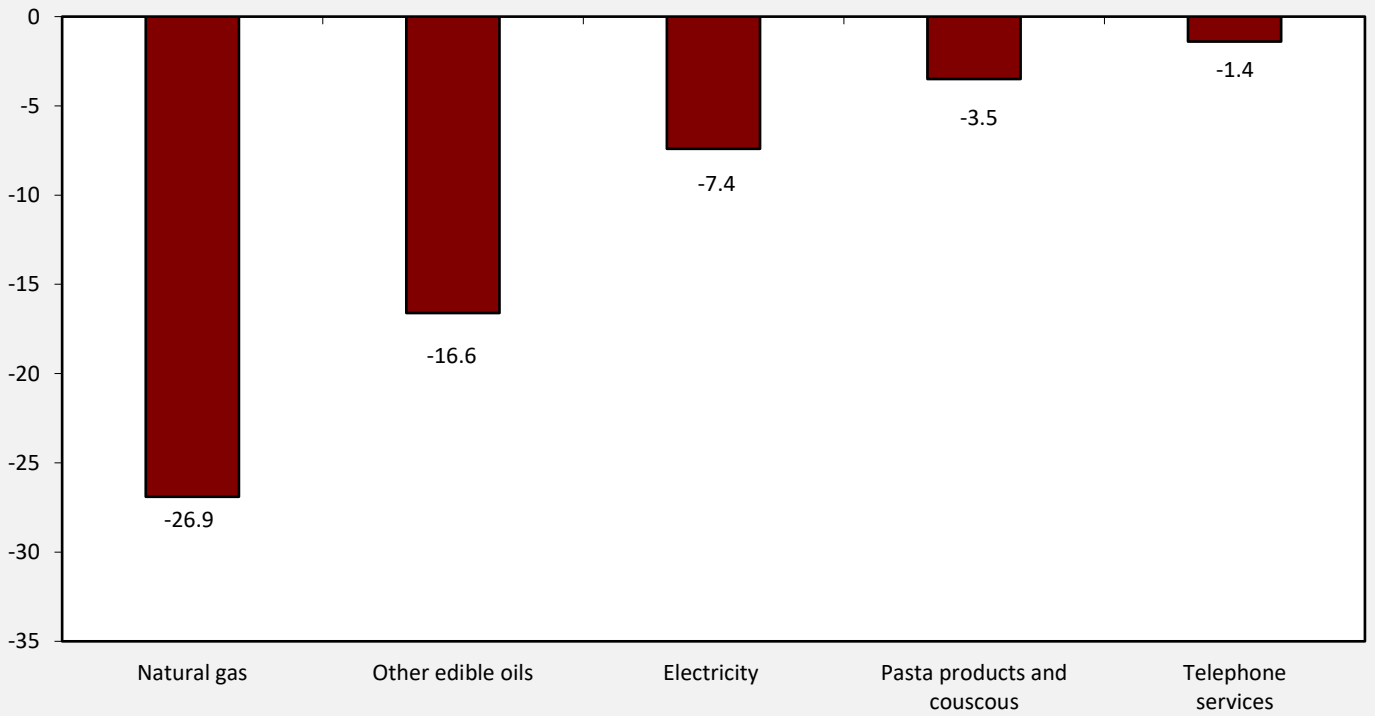
**Graph 6. Annual rates of change (%) of CPI between April 2024 and April 2023**



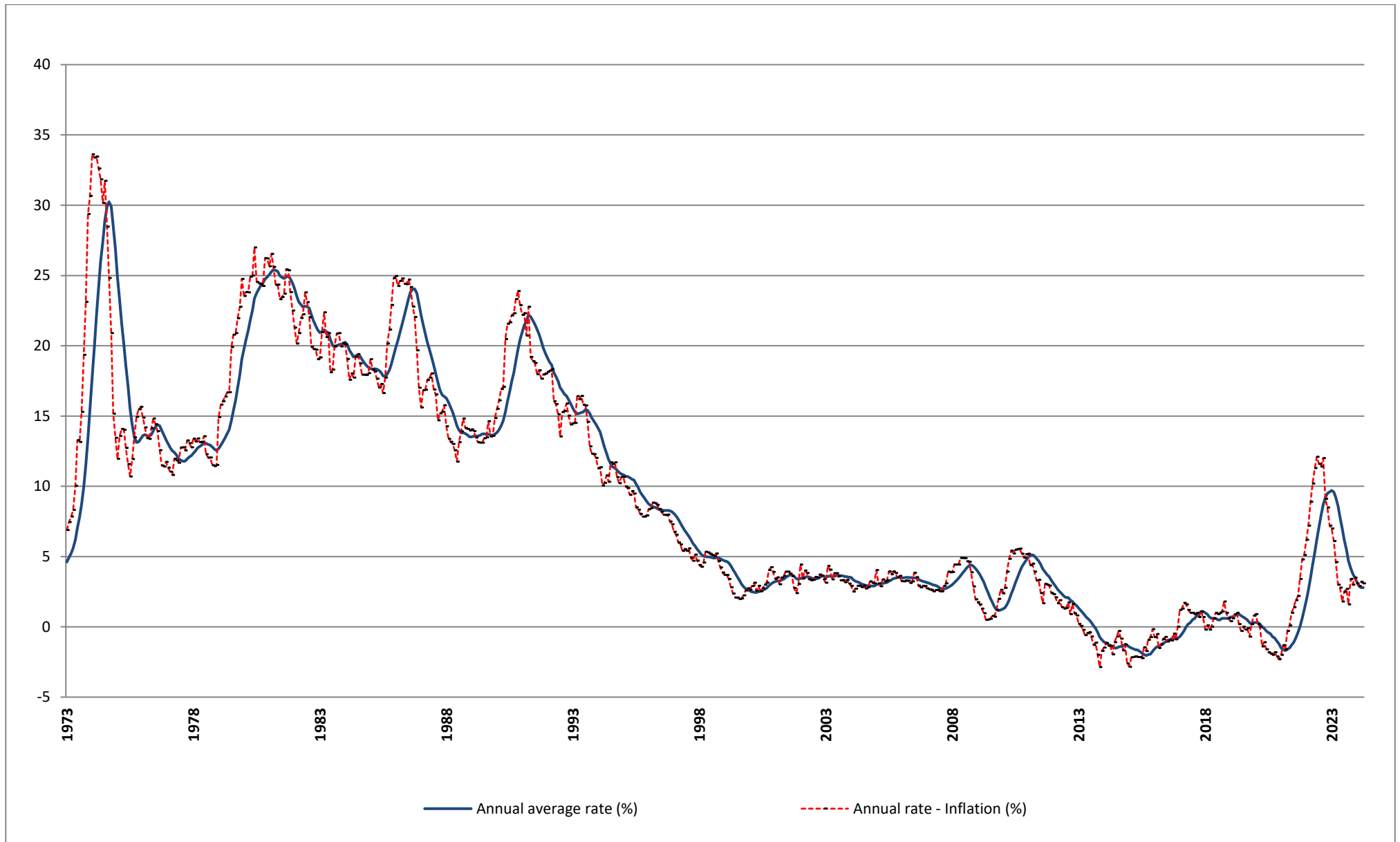
Graph 7. CPI highest annual increases (%)



Graph 8. CPI highest annual decreases (%)



Graph 9. Historical evolution of CPI, 1973 – 2024



## METHODOLOGICAL NOTES

<b>Generally</b>	The Consumer Price Index (CPI) is compiled by the Hellenic Statistical Authority (ELSTAT) since 1959. Until the year 2000, the CPI referred to the urban areas of the Country, while from 2001 onwards it refers to the whole Country covering urban, semi-urban and rural areas.
<b>Purpose of the index</b>	The purpose of the CPI is to measure the general level of prices of goods and services purchased by the average Greek household.
<b>Legal basis</b>	<a href="#">Law 3832/2010</a> .
<b>Reference period</b>	Month.
<b>Base</b>	December of the previous year.
<b>Reference year</b>	2020=100.0.
<b>Chain linking Index</b>	The CPI index follows the chain linking method, introducing new weights annually and having as a base the December of the previous year. The weights are estimated on the basis of the most recent available data of the Household Budget Survey (HBS), extrapolated to the prices of December. The CPI, adjusted on an annual basis to the most recent consumption expenditure pattern of the private households of the Country, ensures the representativeness of goods and services, which compose the “basket” of purchases of the average household.
<b>Geographical and population coverage of the CPI</b>	The CPI refers to the whole Country and covers the resident households of the territory excluding collective households (hospitals, homes for the elderly, boarding houses, prisons, etc.) and non-resident households (tourists) in the Country.
<b>Classification of items</b>	The classification of the CPI items (goods and services) is based on the international classification COICOP (Classification of Individual Consumption by Purpose) as this has been adapted to the needs of the HICPs of the EU Member States with the COICOP5/HICP classification.
<b>Weights of items</b>	The weights of CPI items are updated every year, on the basis of the most recent available data of HBS. The weights are calculated as the share (%) of the expenditures for each group, subgroup and item (good or service) to the total household expenditure of the average household.
<b>Price collection Cities</b>	The CPI prices are collected in 27 cities with representative markets for the coverage of the 13 Regions of the Country. The selection criteria of the price collection cities are the size and the particularities of their markets, the possibility of continuous price collection, the comparability of the index and the cost of price collection.
<b>Population weights</b>	The calculation of the population weights by regions is based on the population data of the 2011 General Population Census and the expenditure data of the latest available HBS by regions.
<b>Selection of items</b>	<a href="#">The composition of the "household basket"</a> i.e. the selection of goods and services which are included in the calculation of CPI is updated annually, using the results of the latest available HBS, other market research, etc. The chain linking methodology allows the change of items of the household basket on an annual basis, in order to ensure the representativeness of the items involved in the calculation of groups and subgroups of CPI.
<b>Price collection-Outlets</b>	The prices collection outlets are retail stores, enterprises providing services, street markets etc. which are considered representative of the branches of shops, where the households make their purchases in the 27 selected cities. The methodology allows the renewal of price collection sources, annually, in order to maintain their representativeness in the calculation of CPI. Prices are collected by employees of ELSTAT as well as by external price collectors, hired on a temporary basis. They pay a visit to the selected outlets within a specific time period of a month (monthly prices) or on a specific day of the week (weekly prices). The collected prices correspond to the prices actually faced by the consumer.
<b>Specification-Substitution of items</b>	All the collected items are defined by the specification, that is the particular characteristics which determine the quality, the trade show and the identity, in general, of good products (such as brand, weight, package etc), in order to avoid any price variations attributable to differences in the specification. Once a specified item (good or service) is no longer available in the market or has ceased to be important, as regards consumption, it is substituted by a newly specified item, which has taken its place in the market.

**Calculation of the Consumer Price Index**

The Consumer Price Index is a Laspeyres-type index and it is calculated based on December of the previous year.

**Implementation of formula in five-digit level of COICOP5**

Specifically, if the five-digit item h includes q price collected items, then its index in month t of year T,  $R_h^{t,T}$ , is given by the following formula:

$$R_h^{t,T} = R_h^{12,T-1} \left[ \frac{\sum_{i=1}^q w_i^T R_i^{t,T} / R_i^{12,T-1}}{\sum_{i=1}^q w_i^T} \right],$$

where:

$R_h^{12,T-1}$  = the index of the five-digit item h, in December of year T-1.

$w_i^T$  = the weight of the price collected item i, in year T.

$R_i^{t,T}$  = the index of the price collected item i, in month t of year T.

$R_i^{12,T-1}$  = the index of the price collected item i, in December of year T-1.

A similar methodology is followed for the calculation of indices in the upper levels (two-digit, three-digit and four-digit) of COICOP5 and the calculation of the overall CPI as well.

**Publication of data** The published CPI time series (reference year 2020=100.0), covers the period from January 1959 onwards. The CPI data are released each month as scheduled, in accordance with the Releases Calendar of ELSTAT, with the [Release and the tables](#).

**References** Further information concerning the methodology and the compilation of the CPI is available in the [Single Integrated Metadata Structure \(SIMS\)](#).