

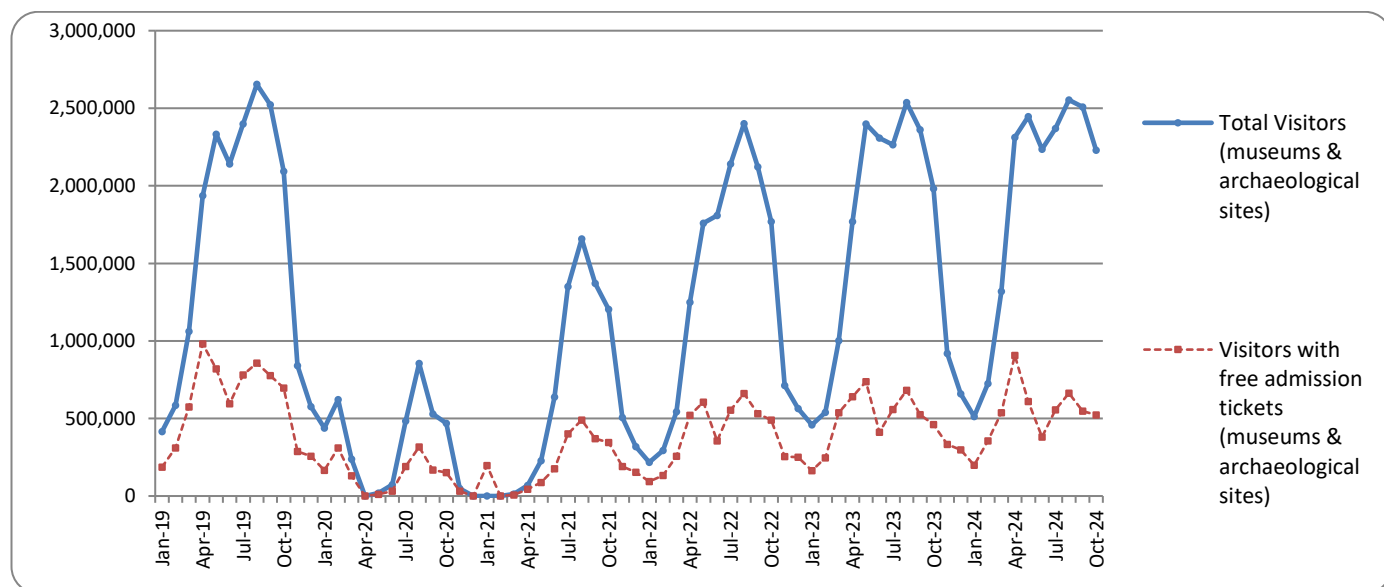


SURVEY ON MUSEUMS AND ARCHAEOLOGICAL SITES ATTENDANCE OCTOBER 2024

The Hellenic Statistical Authority (ELSTAT) announces the results of the *Survey on Museums and Archaeological Sites Attendance* for October 2024. More specifically:

- During October 2024 compared with the corresponding month of 2023, museums recorded a 27.8% increase in the number of visitors, a 19.4% increase in the number of free admission visitors and a 28.3% increase in their receipts (Table 1).
- As regards archaeological sites, in October 2024 compared with the corresponding month of 2023, an increase of 6.6% was recorded in the number of visitors, of 10.2% in the number of free admission visitors and an increase of 3.0% in the corresponding receipts (Table 1).
- During the ten-month period from January to October 2024, compared with the corresponding period of 2023, an increase of 16.6% was recorded in the number of visitors of museums, of 4.3% in the number of free admission visitors and of 20.8% in the relevant receipts (Table 2).
- As regards archaeological sites, during the ten-month period from January to October 2024, compared with the corresponding period of 2023, an increase of 5.7% was recorded in the number of visitors, of 7.5% in the number of free admission visitors and of 5.0% in the relevant receipts (Table 2).

Graph 1: Visitors of Museums and Archaeological sites (January 2019 – October 2024)



Information on methodological issues:

Sectoral Statistics Division
Tourism and Culture Statistics Section
Head of Section: Eleni Papadopoulou
Tel: +30 213 135 2168
e-mail: e.papadopoulou@statistics.gr

Information for data provision:

Tel. +30 213 135 2022, 2308, 2310
e-mail: data.dissem@statistics.gr

**TABLE 1: VISITORS OF MUSEUMS AND ARCHAEOLOGICAL SITES - TOTAL RECEIPTS
(OCTOBER 2023 & OCTOBER 2024)**

I. NUMBER OF VISITORS			
Museums and Archaeological sites	2023	2024	Change 2024/2023
Total number of visitors (A+B)	1,981,654	2,229,175	12.5%
A. Museums (C+E)	549,527	702,032	27.8%
Acropolis Museum	175,496	196,599	12.0%
National Archaeological	63,064	62,406	-1.0%
Ancient Olympia ⁽³⁾	9,312	34,950	275.3%
Palace of the Grand Master (Rhodes) ⁽²⁾	47,545	50,497	6.2%
Herakleion Archaeological (Crete)	30,842	42,071	36.4%
White Tower	22,966	25,866	12.6%
Delphi ⁽³⁾	19,129	54,640	185.6%
Other museums ⁽²⁾	181,173	235,003	29.7%
B. Archaeological Sites (D+F)	1,432,127	1,527,143	6.6%
Epidavros ⁽¹⁾	54,159	61,061	12.7%
The Acropolis of Mycenae & Atreus' Treasure	52,962	58,473	10.4%
The Acropolis of Athens	355,829	393,269	10.5%
Sounio	43,992	43,215	-1.8%
The Acropolis of Lindos	83,603	102,183	22.2%
Royal Tombs of Vergina	14,391	21,918	52.3%
Ancient Olympia ⁽³⁾	58,422	31,917	-45.4%
Knossos (Crete)	113,150	124,302	9.9%
Phaistos (Crete)	11,147	12,261	10.0%
Ancient Korinthos ⁽¹⁾	32,007	40,150	25.4%
Mystras ⁽¹⁾	15,791	19,153	21.3%
Delphi ⁽³⁾	50,262	28,221	-43.9%
Other archaeological sites ⁽²⁾	546,412	591,020	8.2%
II. VISITORS WHO PAID TICKET			
	2023	2024	Change 2024/2023
Total number of visitors who paid ticket (C+D)	1,520,010	1,705,291	12.2%
C. Museums ⁽²⁾	385,542	506,211	31.3%
D. Archaeological sites ⁽²⁾	1,134,468	1,199,080	5.7%
III. VISITORS WITH FREE ADMISSION TICKETS			
	2023	2024	Change 2024/2023
Total number of visitors with free admission ticket (E+F)	461,644	523,884	13.5%
E. Museums	163,985	195,821	19.4%
F. Archaeological sites	297,659	328,063	10.2%
IV. RECEIPTS (euros)			
	2023	2024	Change 2024/2023
Total Receipts (G+H)	17,728,985	19,249,893	8.6%
G. Museums	3,927,545	5,037,544	28.3%
H. Archaeological sites	13,801,440	14,212,349	3.0%

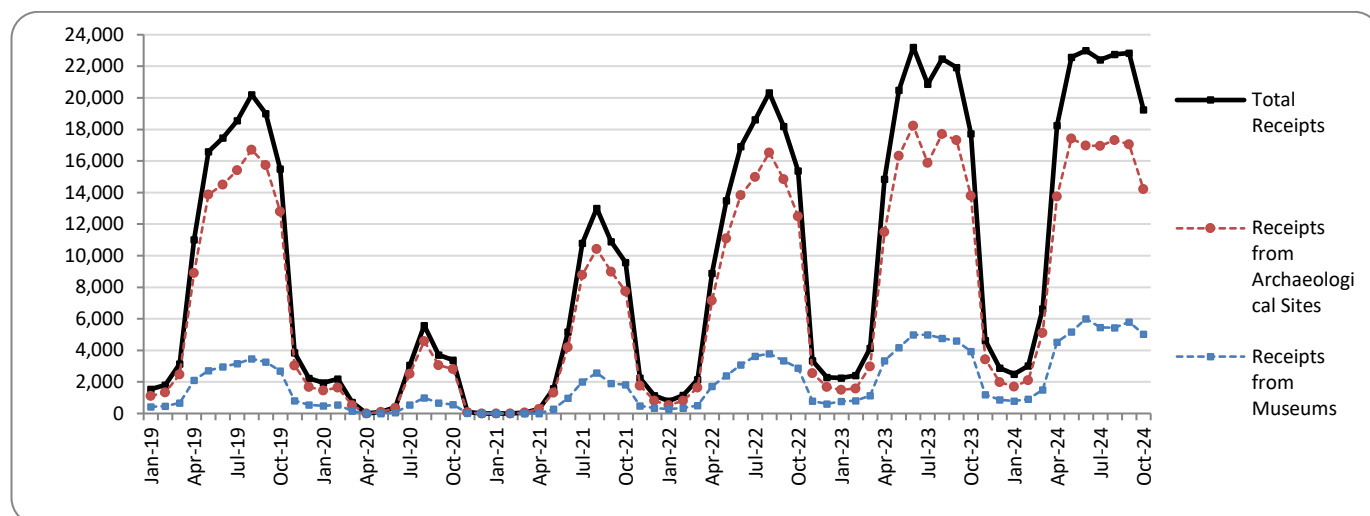
⁽¹⁾ Flat rate ticket, valid both for the museum and the archaeological site.

⁽²⁾ Revised data for 2023, due to the transmission of updated data from administrative sources.

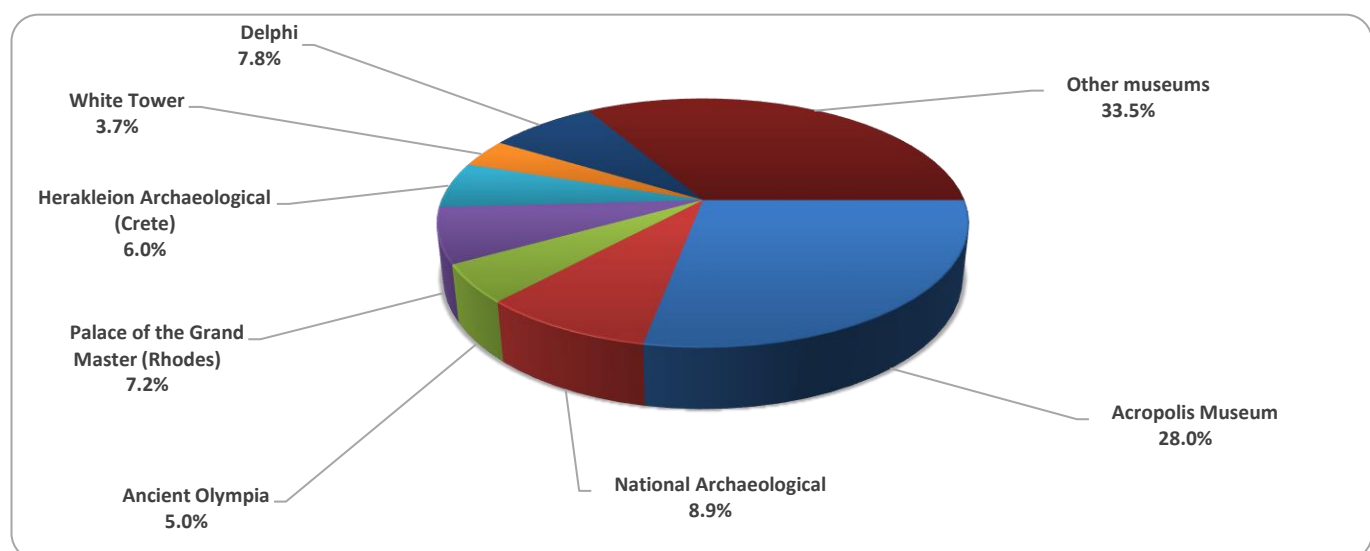
⁽³⁾ Since April 2024 tickets can be purchased online from the museums of Ancient Olympia and Delphi, covering the visit both to the museum and to the corresponding archaeological site, and cannot be monitored separately.

The following graphs depict the evolution of the receipts of Museums and Archaeological Sites (Graph 2), as well as the number of visitors by Museum (Graph 3) and by Archaeological Site (Graph 4).

Graph 2: Receipts from Museums and Archaeological Sites (January 2019 – October 2024)
(in thousand euro)



Graph 3: Percentage distribution of visitors by Museum, October 2024



Graph 4: Percentage distribution of visitors by Archaeological site, October 2024

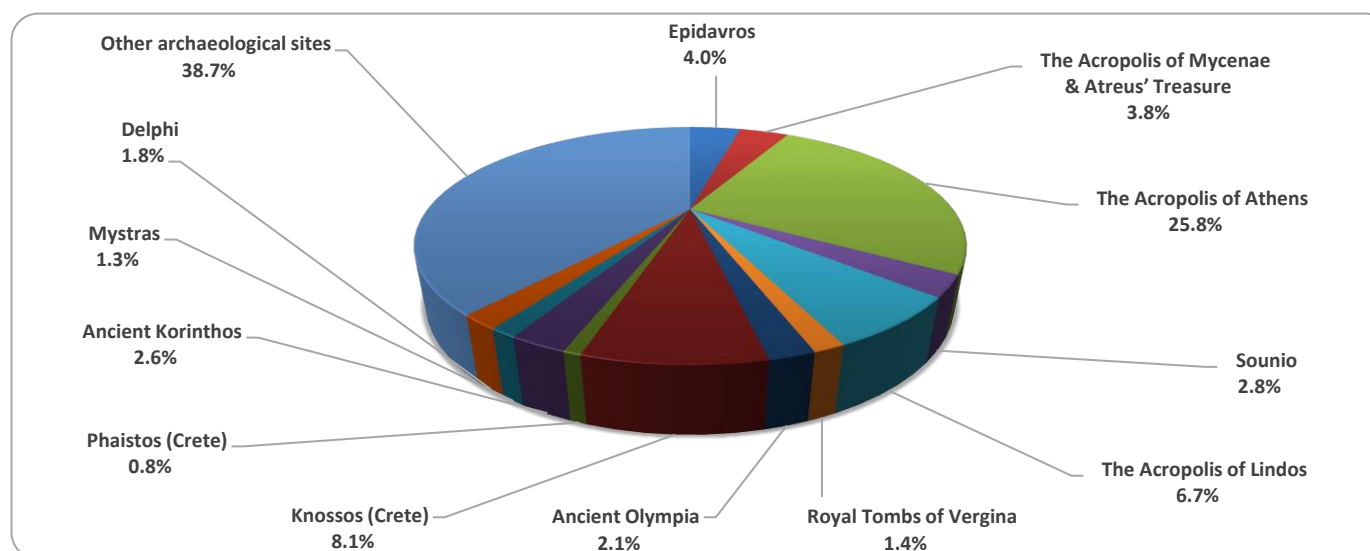


TABLE 2: VISITORS OF MUSEUMS AND ARCHAEOLOGICAL SITES - TOTAL RECEIPTS
(2022, 2023, JANUARY – OCTOBER 2023, 2024)

I. VISITORS					
Museums and Archaeological sites	2022	2023	JANUARY- OCTOBER		change
			2023	2024	2024/2023
Total number of visitors (A+B)	15,583,552	19,210,752	17,632,430	19,205,974	8.9%
A. Museums (C+E)	4,636,901	5,801,812	5,209,141	6,075,673	16.6%
Acropolis Museum	1,397,353	1,900,950	1,715,398	1,815,523	5.8%
National Archaeological	474,821	642,318	572,358	577,573	0.9%
Ancient Olympia ⁽³⁾	85,179	85,410	79,737	275,628	245.7%
Palace of the Grand Master (Rhodes) ⁽²⁾	263,521	342,607	323,949	354,388	9.4%
Herakleion Archaeological (Crete)	249,715	294,839	273,279	362,047	32.5%
White Tower ⁽²⁾	193,916	259,775	225,452	207,460	-8.0%
Delphi ⁽³⁾	151,512	203,445	185,225	413,801	123.4%
Other museums ⁽²⁾	1,820,884	2,072,468	1,833,743	2,069,253	12.8%
B, Archaeological Sites (D+F)	10,946,651	13,408,940	12,423,289	13,130,301	5.7%
Epidavros ⁽¹⁾	393,077	525,982	491,733	515,714	4.9%
The Acropolis of Mycenae & Atreus' Treasure	372,448	510,507	475,120	510,642	7.5%
The Acropolis of Athens	3,019,841	3,958,405	3,558,210	4,173,803	17.3%
Sounio	314,506	393,927	354,499	387,149	9.2%
The Acropolis of Lindos	596,331	629,089	617,334	693,712	12.4%
Royal Tombs of Vergina	168,444	202,122	169,607	220,596	30.1%
Ancient Olympia ⁽³⁾	338,365	481,211	452,814	288,332	-36.3%
Knossos (Crete)	831,320	959,110	914,597	979,473	7.1%
Phaistos (Crete)	74,817	79,934	77,901	82,181	5.5%
Ancient Korinthos ⁽¹⁾	153,616	210,465	194,577	234,157	20.3%
Mystras ⁽¹⁾	139,512	151,508	140,203	143,098	2.1%
Delphi ⁽³⁾	332,870	482,293	437,329	272,007	-37.8%
Other archaeological sites ⁽²⁾	4,211,504	4,824,387	4,539,365	4,629,437	2.0%
II. VISITORS WHO PAID TICKET					
	2022	2023	JANUARY- OCTOBER		change
			2023	2024	2024/2023
Total number of visitors who paid ticket (C+D)	10,877,516	13,614,885	12,667,182	13,926,434	9.9%
C. Museums ⁽²⁾	2,883,216	3,690,912	3,377,842	4,166,231	23.3%
D. Archaeological site ⁽²⁾	7,994,300	9,923,973	9,289,340	9,760,203	5.1%
III. VISITORS WITH FREE ADMISSION TICKETS					
	2022	2023	JANUARY- OCTOBER		change
			2023	2024	2024/2023
Total number of visitors with free admission ticket (E+F)	4,706,036	5,595,867	4,965,248	5,279,540	6.3%
E. Museums ⁽²⁾	1,753,685	2,110,900	1,831,299	1,909,442	4.3%
F. Archaeological sites	2,952,351	3,484,967	3,133,949	3,370,098	7.5%
IV. RECEIPTS (euros)					
	2022	2023	JANUARY- OCTOBER		change
			2023	2024	2024/2023
Total Receipts (G+H)	121,535,113	157,852,657	150,446,167	163,254,056	8.5%
G. Museums	23,361,465	35,617,601	33,633,620	40,612,668	20.8%
H. Archaeological sites	98,173,648	122,235,056	116,812,547	122,641,388	5.0%

⁽¹⁾ Flat rate ticket, valid both for the museum and the archaeological site.

⁽²⁾ Revised data for 2023, due to the transmission of updated data from administrative sources.

⁽³⁾ Since April 2024 tickets can be purchased online from the museums of Ancient Olympia and Delphi, covering the visit both to the museum and to the corresponding archaeological site, and cannot be monitored separately.

EXPLANATORY NOTES

Survey on Museums and Archaeological Sites Attendance	<p>The Survey on Museums and Archaeological Sites Attendance has been producing results since 1970. The survey collects data from the Hellenic Organization of Cultural Resources Development (HOCRED), supervised by the Ministry of Culture and Sports, on the number of visitors and the receipts from the tickets sold in the Museums and Archaeological sites of the country.</p> <p>The corresponding data for the Acropolis Museum is available from December 2009 onwards.</p>
Legal Framework	<p>The survey is conducted since 1970 on a regular basis and it produces results on a monthly and yearly basis, in compliance with the Joint Ministerial Decision 15189/B379/73.</p>
Reference Period	<p>1/10/2024 - 31/10/2024</p>
Methodology and Definitions	<p>The survey is conducted on a monthly basis from data mainly collected from the Hellenic Organization of Cultural Resources Development (HOCRED), supervised by the Ministry of Culture and Sports, on the number of visitors and the receipts from the tickets sold in the Museums and Archaeological sites of the Country. ELSTAT tabulates and presents the data for the whole of the Country, by month and by year.</p> <p>Number of flat rate tickets:</p> <p>From April 1999 onwards, in some museums and the nearby archaeological sites, in addition to the ordinary ticket, a new “flat rate ticket” was established, which is valid for both the museum and the nearby archaeological site. The total number of these flat rate tickets for October 2024 was 92,942</p>
References	<p>More information on the Survey on Museums and Archaeological Sites Attendance and detailed time series are available on: http://www.statistics.gr/en/statistics/-/publication/SCI21/-</p>