



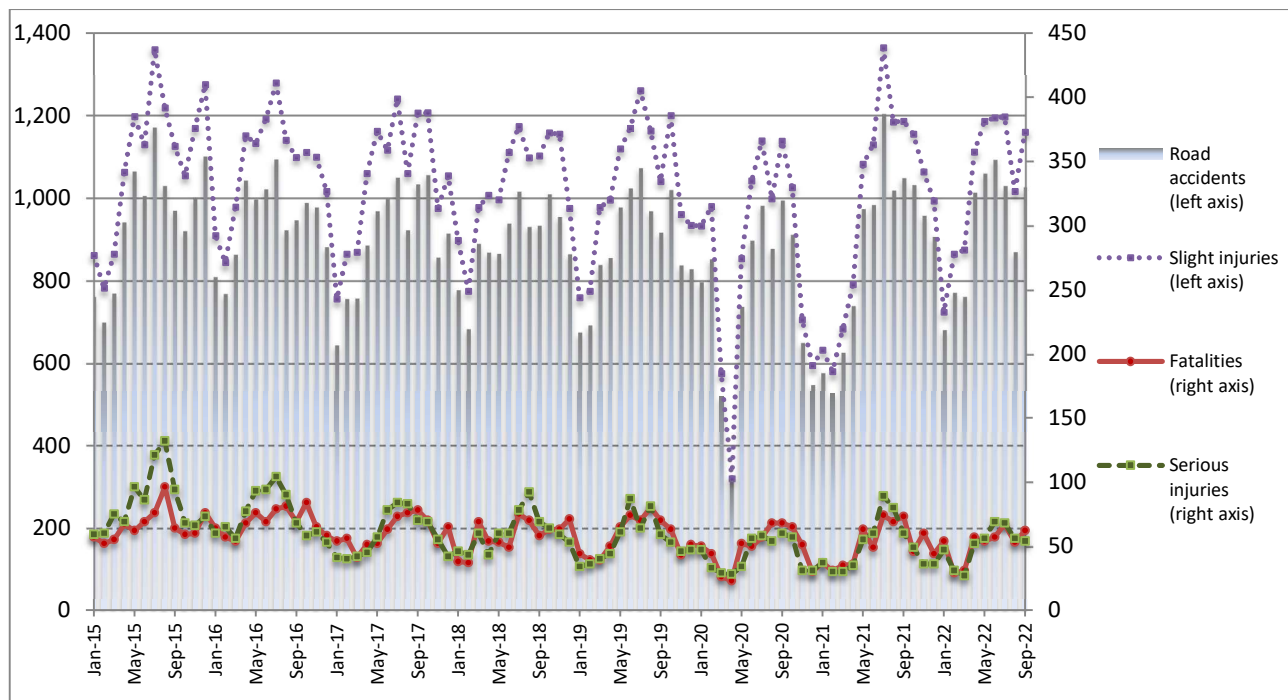
PRESS RELEASE

ROAD TRAFFIC ACCIDENTS: September 2022

The Hellenic Statistical Authority (ELSTAT) announces provisional¹ data from the survey on “Road Traffic Accidents” for September 2022. In particular, the road traffic accidents which occurred in Greece, resulting in death or injury, decreased by 2.1% in comparison with the corresponding month of 2021 (1,027 road accidents in September 2022, against 1,049 road accidents in September 2021).

The casualties of the injury-causing accidents that occurred in September 2022 were as follows: 62 deaths, 54 serious injuries and 1,159 slight injuries. In contrast, in September 2021 the corresponding figures were: 73 deaths, 60 serious injuries and 1,186 slight injuries. Therefore, road traffic accident casualties in September 2022 decreased by 15.1% for deaths, by 10.0% for serious injuries and by 2.3% for slight injuries.

**Graph 1: Road traffic accidents and casualties,
January 2015 - September 2022**



Provisional data for the period October 2021 – September 2022

Information on methodological issues:

Sectoral Statistics Division
Transport Statistics Section
L. Miliara
Tel: +30 213 135 3095
e-mail: l.miliara@statistics.gr

Information for data provision:

Tel: +30 213 135 2022, 2308, 2310
e-mail: data.dissem@statistics.gr

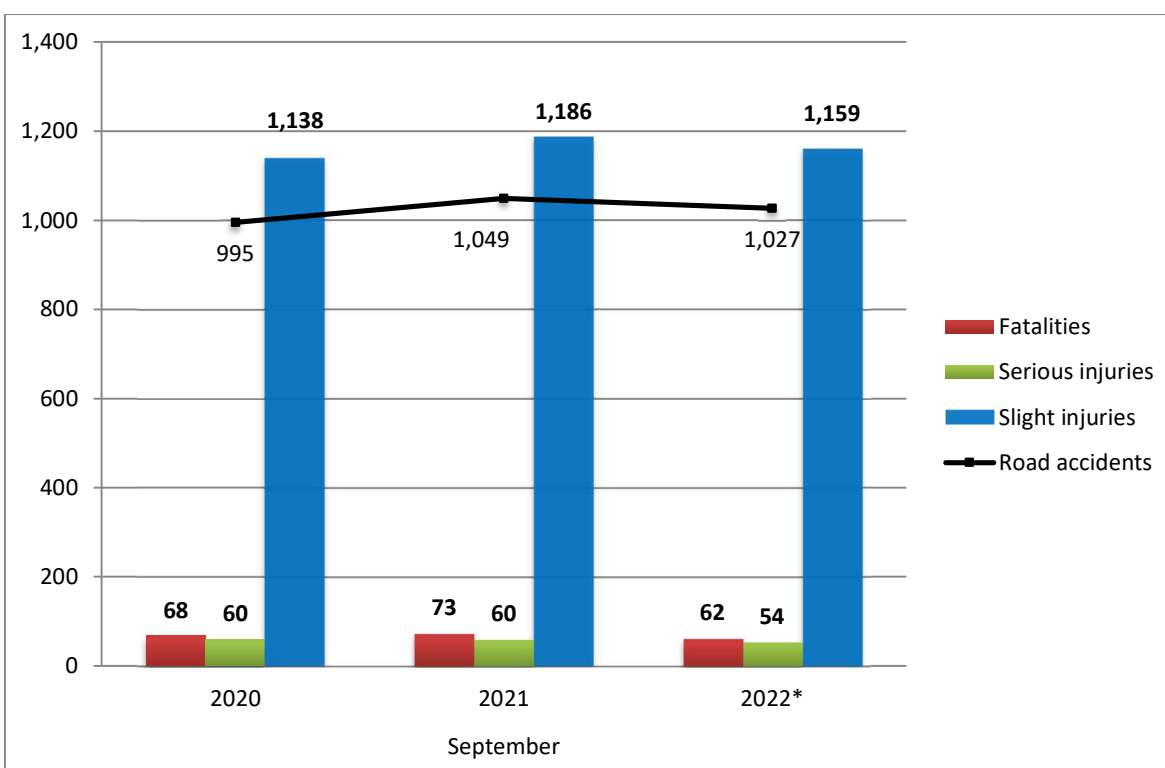
^[1] Data for the reference year is provisional until the finalization of the annual data, which takes place 10 months after the end of the reference year and is published in the corresponding press release of the following year. During these 10 months the provisional data is updated on the basis of the data of the Road Accident Forms of that year which is transmitted to ELSTAT by Police Authorities (see explanatory notes).

Table 1: Road traffic accidents and casualties, September 2020 - 2022*

	September				
	2020	2021	2021/2020 (%)	2022*	2022*/2021 (%)
Road accidents	995	1,049	5.4	1,027	-2.1
Fatalities	68	73	7.4	62	-15.1
Total injuries	1,198	1,246	4.0	1,213	-2.6
Serious injuries	60	60	0.0	54	-10.0
Slight injuries	1,138	1,186	4.2	1,159	-2.3

* Provisional data

Graph 2: Road traffic accidents and casualties, September 2020 - 2022*



* Provisional data

Table 2: Road traffic accidents and casualties, by region and department, September 2021 and 2022*

Region and department	Road accidents			Fatalities			Serious injuries			Slight injuries		
	2021	2022*	%	2021	2022*	%	2021	2022*	%	2021	2022*	%
Greece Total	1,049	1,027	-2.1	73	62	-15.1	60	54	-10.0	1,186	1,159	-2.3
Anatoliki Makedonia and Thraki (East Macedonia and Thrace)	33	28	-15.2	4	3	-25.0	3	4	33.3	30	25	-16.7
Drama	8	5	-37.5	0	0		1	1		7	5	
Evros	7	11	57.1	0	0		0	0		7	12	
Kavala	3	7	133.3	1	0		0	3		4	5	
Xanthi	5	4	-20.0	1	2		0	0		4	3	
Rodopi	10	1	-90.0	2	1		2	0		8	0	
Kentriki Makedonia (Central Macedonia)	183	179	-2.2	9	5	-44.4	4	2	-50.0	206	213	3.4
Imathia	3	2	-33.3	0	2		0	0		5	0	
Thessaloniki	152	156	2.6	5	1		1	1		172	186	
Kilkis	7	6	-14.3	2	0		0	0		6	10	
Pella	5	6	20.0	0	2		1	0		6	5	
Pieria	3	5	66.7	1	0		2	0		0	5	
Serres	2	1	-50.0	1	0		0	0		1	2	
Chalkidiki	11	3	-72.7	0	0		0	1		16	5	
Dytiki Makedonia (West Macedonia)	5	6	20.0	2	2	0.0	1	1	0.0	3	5	66.7
Grevena	0	0	-	0	0		0	0		0	0	
Kastoria	1	1	0.0	1	0		0	0		0	1	
Kozani	3	3	0.0	0	1		0	0		3	3	
Florina	1	2	100.0	1	1		1	1		0	1	
Ipeiros (Epirus)	14	9	-35.7	2	0	-100.0	2	0	-100.0	14	12	-14.3
Arta	0	1	-	0	0		0	0		0	1	
Thesprotia	7	3	-57.1	1	0		1	0		8	3	
Ioannina	4	5	25.0	1	0		0	0		4	8	
Preveza	3	0	-100.0	0	0		1	0		2	0	
Thessalia (Thessaly)	22	30	36.4	1	3	200.0	6	4	-33.3	22	33	50.0
Karditsa	7	11	57.1	0	2		0	0		10	13	
Larissa	9	7	-22.2	0	1		3	2		9	5	
Magnissia	4	10	150.0	1	0		2	2		2	9	
Trikala	2	2	0.0	0	0		1	0		1	6	
Ionian Nisia (Ionian Islands)	24	14	-41.7	1	0	-100.0	5	2	-60.0	27	22	-18.5
Zakynthos	8	7	-12.5	0	0		3	1		7	12	
Kerkyra	12	2	-83.3	0	0		2	0		14	5	
Kefallinia	1	3	200.0	0	0		0	1		2	3	
Lefkada	3	2	-33.3	1	0		0	0		4	2	

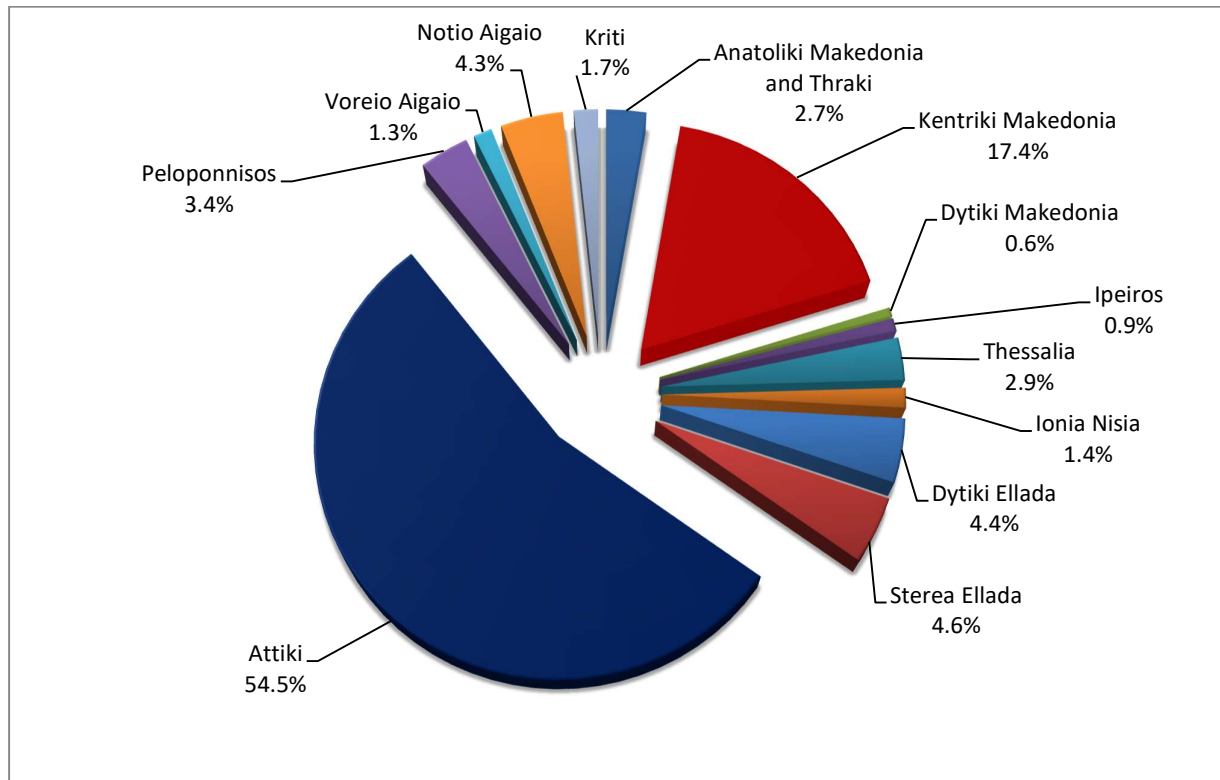
* Provisional data

Table 2: Road traffic accidents and casualties, by region and department, September 2021 and 2022* (Continued)

Region and department	Road accidents			Fatalities			Serious injuries			Slight injuries		
	2021	2022*	%	2021	2022*	%	2021	2022*	%	2021	2022*	%
Dytiki Ellada (West Greece)	42	45	7.1	3	7	133.3	6	3	-50.0	52	45	-13.5
Etolia & Akarnania	19	22	15.8	0	1		4	0		24	25	
Achaia	14	10	-28.6	2	4		1	1		18	10	
Ilia	9	13	44.4	1	2		1	2		10	10	
Stereia Ellada	48	47	-2.1	6	6	0.0	6	4	-33.3	51	52	2.0
Viotia	9	11	22.2	1	1		1	1		9	15	
Evia	22	24	9.1	4	5		3	2		19	21	
Evrytania	0	1	-	0	0		0	0		0	1	
Fthiotida	11	8	-27.3	0	0		2	1		17	12	
Fokida	6	3	-50.0	1	0		0	0		6	3	
Attiki (Attica)	557	560	0.5	23	17	-26.1	12	20	66.7	644	636	-1.2
Peloponnisos (Peloponnese)	27	35	29.6	5	7	40.0	1	3	200.0	36	42	16.7
Argolida	6	9	50.0	1	2		0	0		7	13	
Arkadia	4	8	100.0	0	2		0	1		8	7	
Korinthia	10	11	10.0	2	3		1	2		15	11	
Lakonia	2	1	-50.0	1	0		0	0		2	1	
Messinia	5	6	20.0	1	0		0	0		4	10	
Voreio Aigaio (North Aegean)	22	13	-40.9	4	4	0.0	4	1	-75.0	24	10	-58.3
Lesvos	15	8	-46.7	4	2		2	1		17	5	
Samos	5	5	0.0	0	2		1	0		4	5	
Chios	2	0	-100.0	0	0		1	0		3	0	
Notio Aigaio (South Aegean)	56	44	-21.4	4	4	0.0	8	7	-12.5	57	50	-12.3
Dodekanissos	24	20	-16.7	1	3		4	4		24	23	
Kyklades	32	24	-25.0	3	1		4	3		33	27	
Kriti (Crete)	16	17	6.3	9	4	-55.6	2	3	50.0	20	14	-30.0
Iraklio	7	5	-28.6	4	1		1	0		4	5	
Lassithi	1	3	200.0	1	2		0	0		1	1	
Rethymno	2	5	150.0	0	1		0	1		2	4	
Chania	6	4	-33.3	4	0		1	2		13	4	

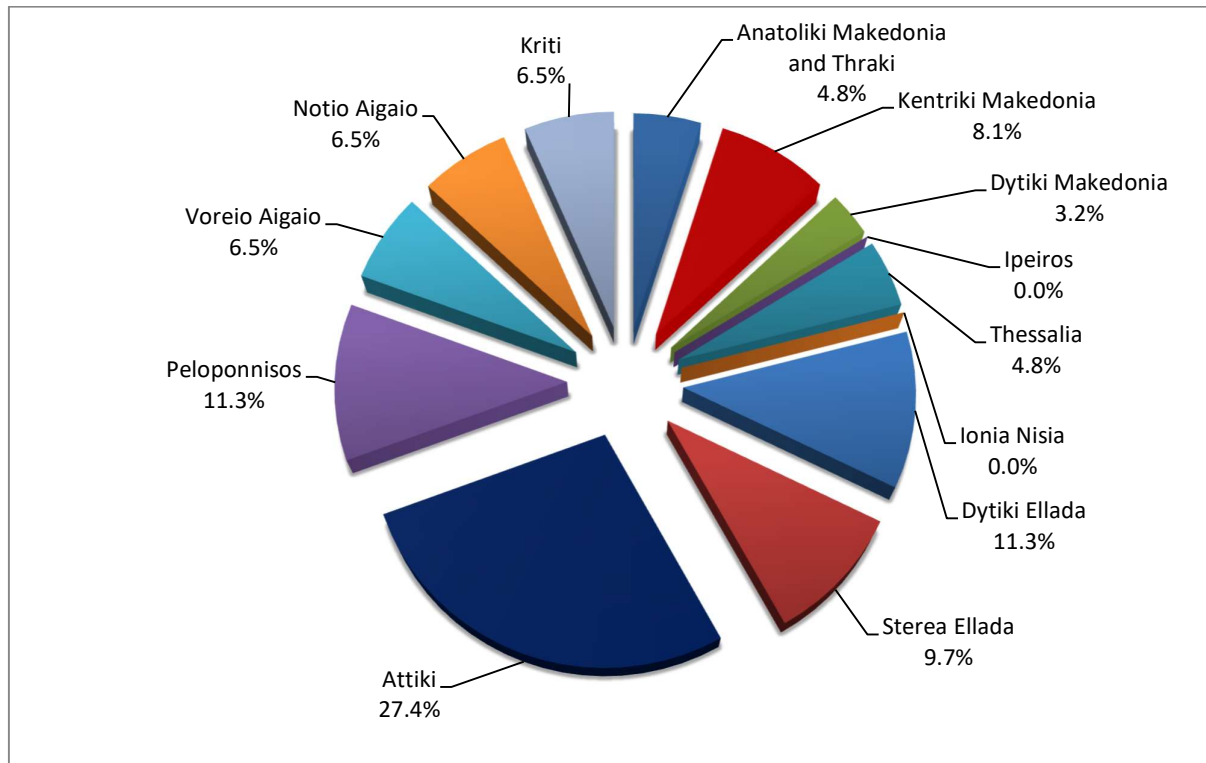
* Provisional data

Graph 3: Road traffic accidents by region, September 2022 *



* Provisional data

Graph 4: Fatalities by region, September 2022 *



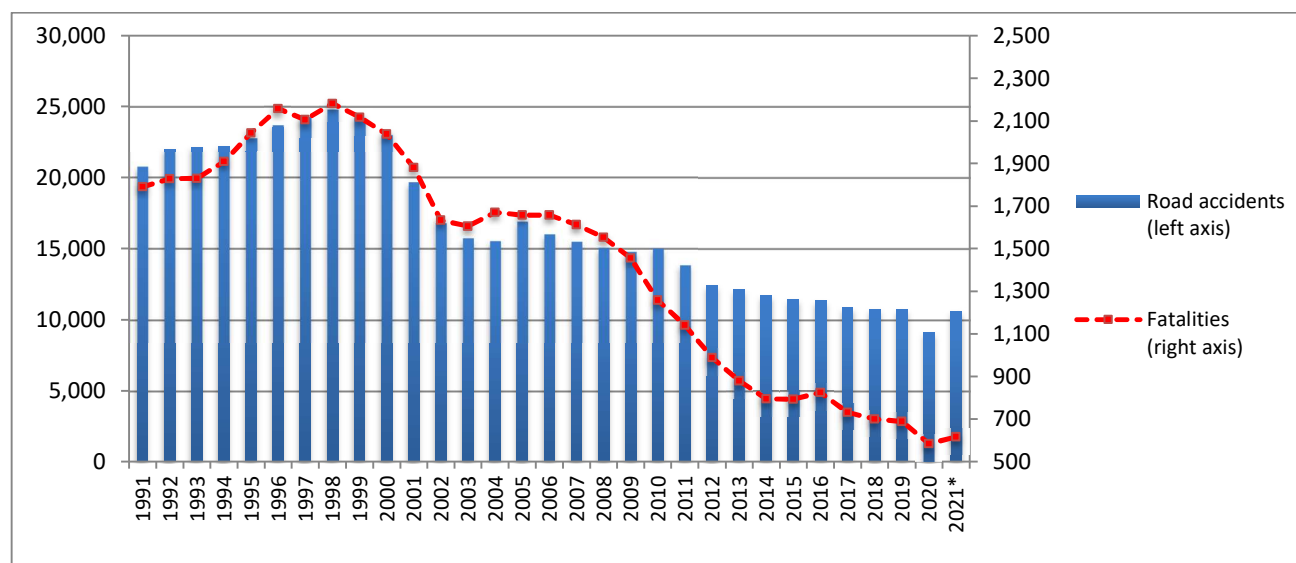
* Provisional data

Table 3: Road traffic accidents and casualties for the period January - September 2020, 2021 and 2022*

	2020		2021		2022 *
	January - September	Total year	January - September	Total year*	January - September
Road Accidents	6,971	9,083	7,702	10,599	8,310
Annual Change (%)			10.5	16.7	7.9
Fatalities	438	584	467	617	464
Annual Change (%)			6.6	5.7	-0.6
Serious injuries	399	518	476	597	460
Annual Change (%)			19.3	15.3	-3.4
Slight injuries	7,976	10,300	8,628	11,840	9,324
Annual Change (%)			8.2	15.0	8.1

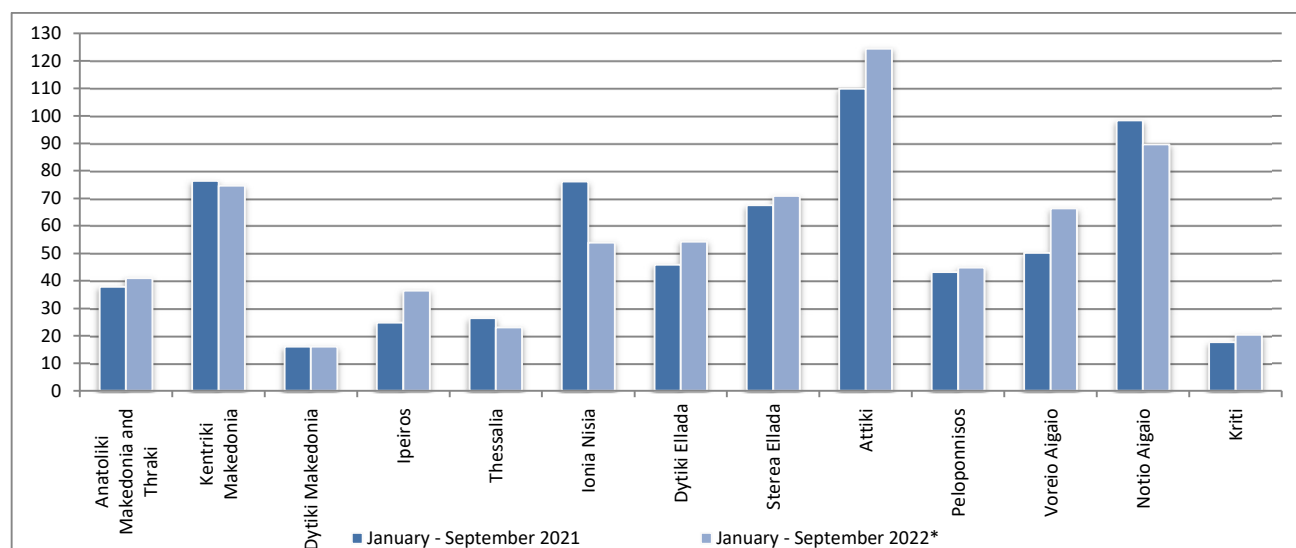
* Provisional data

Graph 5: Total Road traffic accidents and fatalities, 1991-2021*



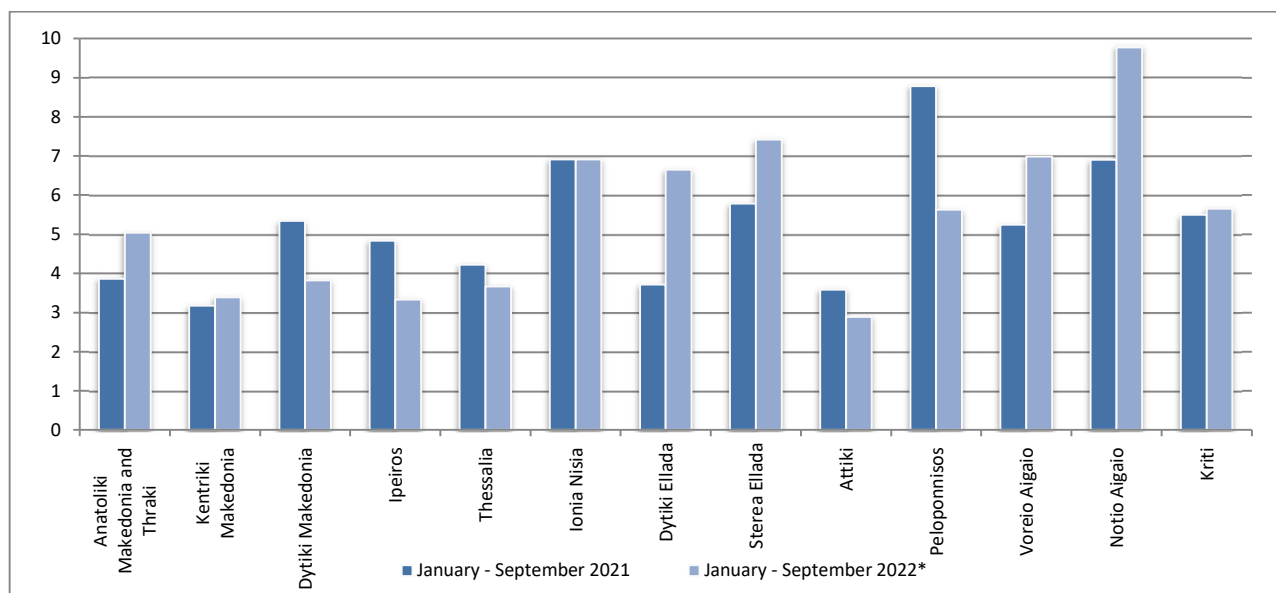
* Provisional data for the period October 2021 – December 2021

Graph 6: Road traffic accidents per 100,000 inhabitants for the period January - September 2021 and 2022*

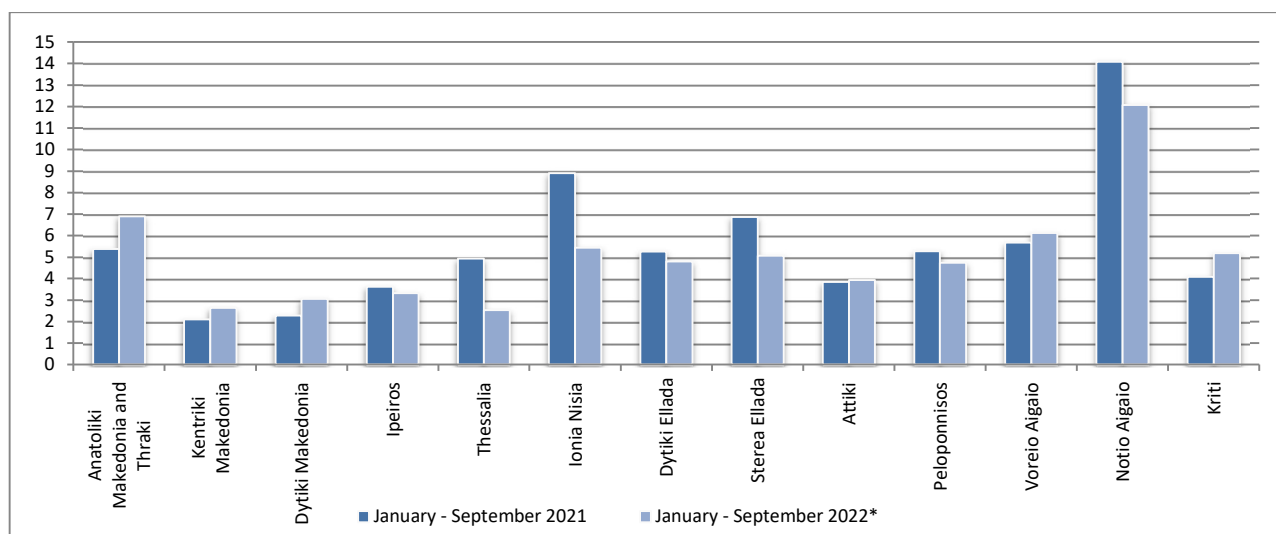


* Provisional data

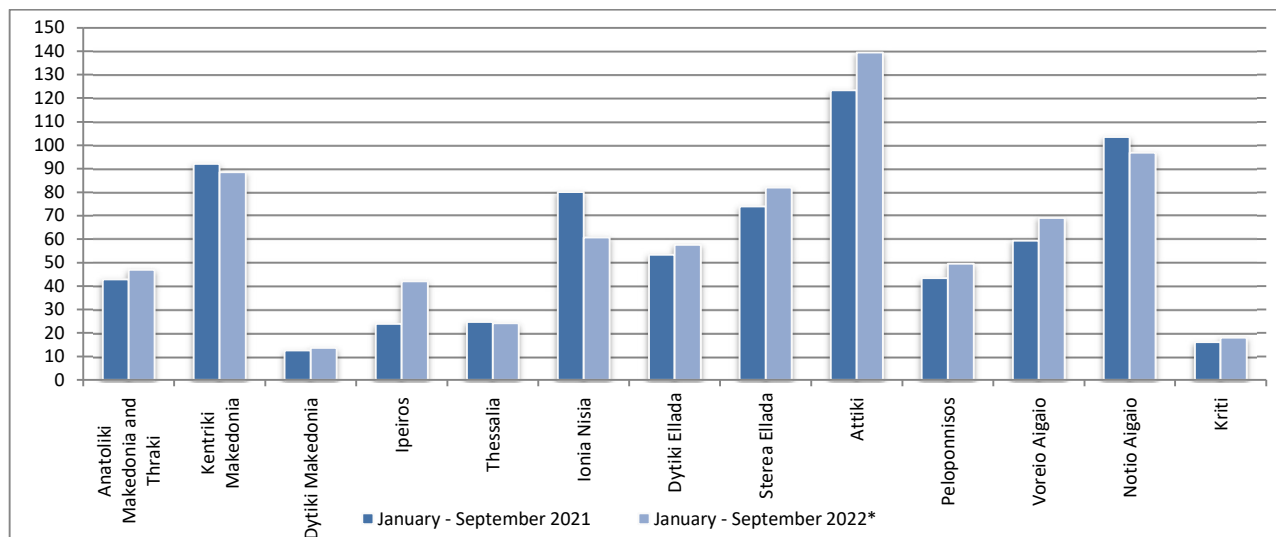
Graph 7: Fatalities per 100,000 inhabitants for the period January - September 2021 and 2022*



Graph 8: Serious injuries per 100,000 inhabitants for the period January - September 2021 and 2022*



Graph 9: Slight injuries per 100,000 inhabitants for the period January - September 2021 and 2022*



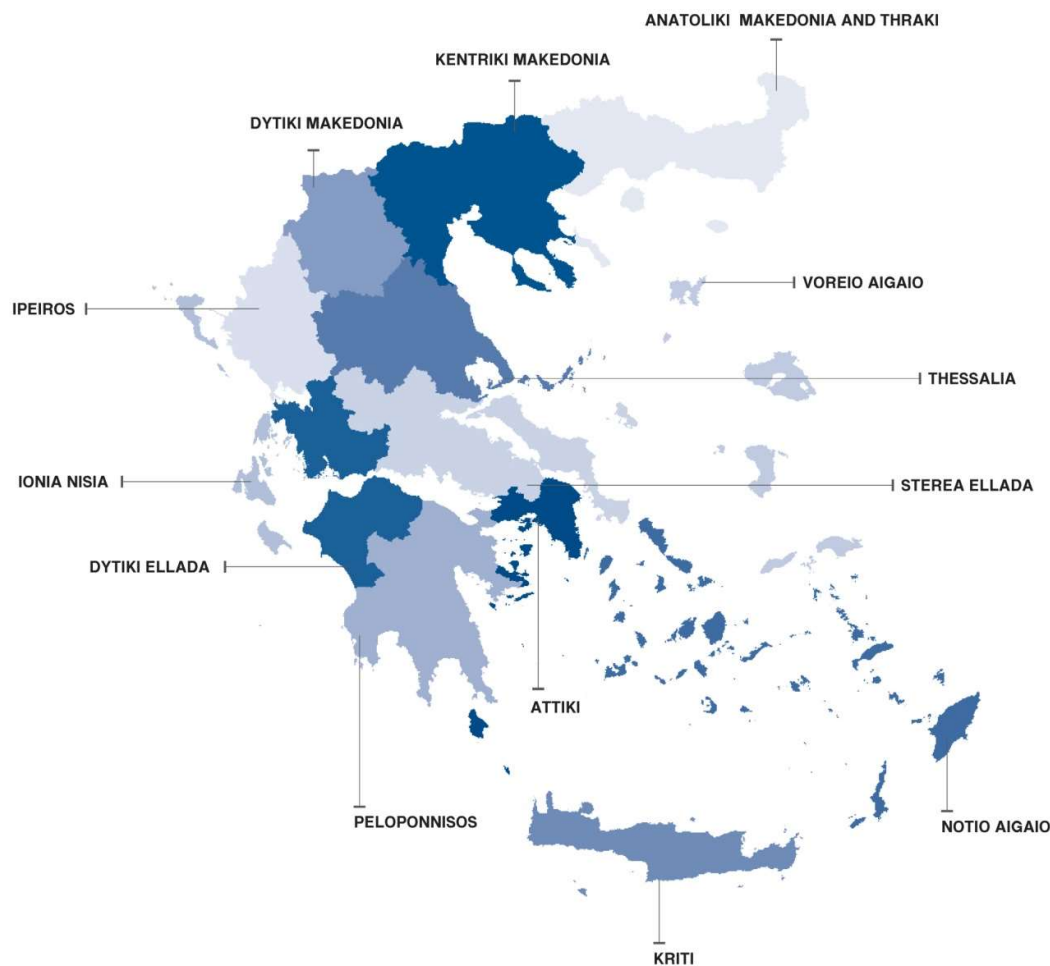
* Provisional data

EXPLANATORY NOTES

Survey on Road Traffic Accidents The Survey on Road Traffic Accidents is conducted on a monthly basis and it records, for each region (see map) and department of Greece and for each month separately, the number of accidents resulting in death or injury, as well as the number of persons injured by categories (drivers, passengers, pedestrians).

On a yearly basis, road traffic accidents are further analyzed. The competent agencies for filling in/collecting the forms on road accidents are the local Police Authorities and the local Port Authorities of Greece.

The lower level of analysis for the place where an injury road accident occurred is the settlement. Data are collected on a monthly basis. The main variables are the following: place of accident, kind of road, casualties, conditions of road surface and type of road.



Legal basis The Survey on Road Traffic Accidents is governed by Council Decision 93/704 of the European Community.

Reference period Monthly.

Availability of data Provisional data are available 2 months after the reference month.
Final data are available 10 months after the reference year.

Definitions **Road accident** (injury accident): Any accident involving at least one road motor vehicle in motion on a public road or square to which the public has access (excluding yards, industrial sites or vehicle depot of public transport enterprises), resulting in at least one injured or killed person. Accidents with only material damages are not included.

Fatality (Death): Any person killed immediately or dying within 30 days as a result of an injury accident (This national definition applies since 01.01.1996)

Person injured: Any person who sustained an injury as result of an injury accident, and who normally needs medical treatment.

Serious injury: Any person who sustained an injury as result of an injury accident, such as brain damages, mutilation, multiple injuries, which may result in lack of awareness or which are life-threatening.

Slight injury: Any person injured who sustained minor and not life-threatening injuries.

Vehicle: Include motor vehicles, trolleybuses, motorcycles, bicycles, motorbikes, agricultural and road making machines, animal and hand-drawn vehicles. Railway vehicles are excluded, unless the road accident involves at least one of the aforementioned types of vehicles and therefore, railway vehicles are considered vehicles.

Methodology The forms of the survey are filled in by the local Police Authorities and the local Port Authorities as well.

References More information about Road Traffic Accidents is available on ELSTAT's website and more specifically at the link: <https://www.statistics.gr/en/statistics/-/publication/SDT03/>.