



## PRESS RELEASE

### ARRIVALS AND NIGHTS SPENT IN HOTELS, SIMILAR ESTABLISHMENTS AND TOURIST CAMPSITES: JANUARY – SEPTEMBER 2016 (provisional data)

According to the results of the Survey on Arrivals and Nights Spent in Hotels, Similar Establishments and Tourist Campsites, conducted by Hellenic Statistical Authority (ELSTAT) for the period January – September 2016, the arrivals of guests, for all types of establishments, amounted to 16,382,167, while the nights spent amounted to 71,731,706. The corresponding arrivals for the same period of 2015, amounted to 16,341,974 while the nights spent amounted to 70,627,422 (Tables 1 and 2, Graph 1) <sup>(1)</sup>.

During the period January – September 2016, the largest share of arrivals and nights spent in hotels, similar establishments and tourist campsites, was recorded by non-residents, i.e. 70.5% of arrivals and 83.1% of nights spent (Graph 2).

For the same period, the average number of nights spent per person amounted to 4.4 nights. More specifically, the average number of nights spent was 5.2 nights for non-residents and 2.5 nights for residents (Graph 3). The average number of nights spent, for the same period of 2015, was 4.3 nights (5.1 for non-residents and 2.5 for residents).

The total occupancy of the bed places in hotels and similar establishments (excluding tourist campsites), which is based on the nights spent compared to the bed places that were in operation, amounted to 51.6% during January – September 2016, compared with 52.9% in the corresponding period of 2015 (Table 3, Graph 4).

---

<sup>(1)</sup> The data of 2015 refer to 79.7% of the total available bed places and the data of 2016 refer to 80.1% of the total available bed places.

*Information:*

*Trade and Services Statistics Division*

*Tourism Statistics Section*

*Asimina Katri, Maria Laftsidou*

*Tel.: +30 213 135 2168, +30 213 135 2625*

*Fax: +30 213 135 2947*

*e-mail: a.katri@statistics.gr, m.laftsidou@statistics.gr*

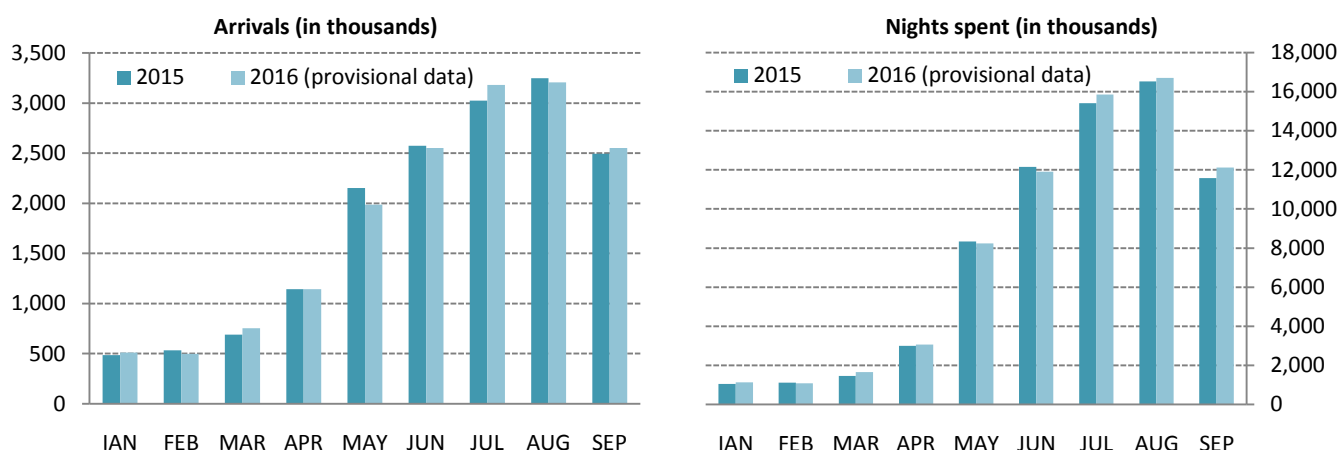
**Table 1. Arrivals of residents and non-residents at hotels, similar establishments and tourist campsites, by month, January – September, 2015 and 2016**

Month	2015					2016 (provisional data)				
	Total	Hotels and similar establishments		Tourist campsites		Total	Hotels and similar establishments		Tourist campsites	
	Arrivals	Residents	Non-residents	Residents	Non-Residents	Arrivals	Residents	Non-residents	Residents	Non-residents
<b>Jan - Sep</b>	<b>16,341,974</b>	<b>4,546,467</b>	<b>11,457,777</b>	<b>127,579</b>	<b>210,151</b>	<b>16,382,167</b>	<b>4,692,681</b>	<b>11,353,625</b>	<b>139,342</b>	<b>196,519</b>
January	485,431	340,418	144,691	161	161	510,542	361,408	148,787	187	160
February	532,593	374,250	158,157	83	103	497,606	334,513	162,895	92	106
March	689,505	438,955	250,181	88	281	752,080	462,807	288,796	158	319
April	1,141,786	487,821	649,580	533	3,852	1,143,812	532,416	608,135	562	2,699
May	2,152,897	543,072	1,583,962	6,928	18,935	1,987,711	463,348	1,505,883	3,626	14,854
June	2,573,973	509,678	2,020,795	12,974	30,526	2,550,745	560,917	1,945,074	18,851	25,903
July	3,025,144	563,000	2,362,326	38,938	60,880	3,181,914	701,057	2,374,382	47,156	59,319
August	3,247,472	775,802	2,343,064	60,935	67,671	3,206,725	755,281	2,322,396	62,678	66,370
September	2,493,173	513,471	1,945,021	6,939	27,742	2,551,032	520,934	1,997,277	6,032	26,789

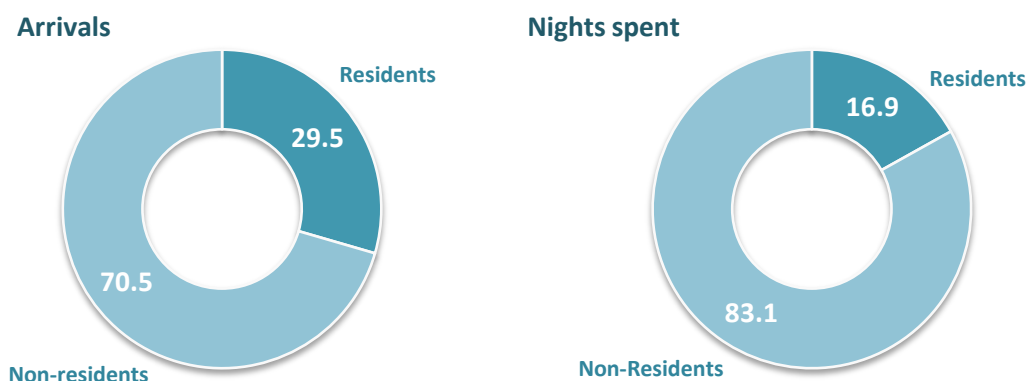
**Table 2. Nights spent of residents and non-residents in hotels and similar establishments, by month, January – September, 2015 and 2016**

Month	2015					2016 (provisional data)				
	Total	Hotels and similar establishments		Tourist campsites		Total	Hotels and similar establishments		Tourist campsites	
	Nights spent	Residents	Non-residents	Residents	Non-residents	Nights spent	Residents	Non-residents	Residents	Non-residents
<b>Jan - Sep</b>	<b>70,627,422</b>	<b>10,810,703</b>	<b>58,270,168</b>	<b>763,570</b>	<b>782,981</b>	<b>71,731,706</b>	<b>11,316,101</b>	<b>58,834,356</b>	<b>810,443</b>	<b>770,806</b>
January	1,054,362	681,159	371,789	250	1,164	1,128,123	738,415	386,982	1,560	1,166
February	1,117,262	742,976	373,277	181	828	1,086,695	666,667	418,604	863	561
March	1,456,316	865,899	589,159	263	995	1,648,045	910,278	735,496	1,372	899
April	2,994,177	1,012,549	1,970,666	2,571	8,391	3,068,198	1,092,506	1,965,832	2,611	7,249
May	8,331,185	1,125,634	7,093,175	51,578	60,798	8,233,322	1,006,382	7,125,591	47,846	53,503
June	12,148,665	1,124,979	10,822,252	93,691	107,743	11,902,168	1,239,651	10,444,363	116,467	101,687
July	15,419,780	1,575,011	13,398,566	214,188	232,015	15,846,461	1,933,892	13,423,838	257,483	231,248
August	16,527,563	2,512,015	13,410,856	338,118	266,574	16,705,115	2,534,452	13,570,608	332,856	267,199
September	11,578,112	1,170,481	10,240,428	62,730	104,473	12,113,579	1,193,858	10,763,042	49,385	107,294

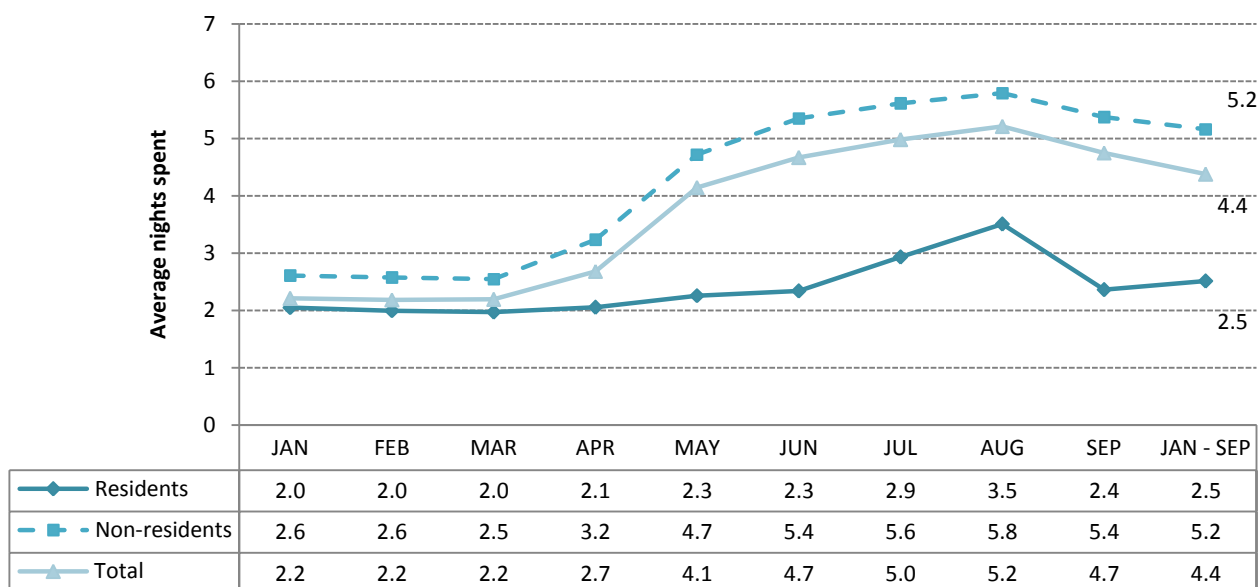
**Graph 1. Arrivals and nights spent of residents and non-residents in hotels, similar establishments and tourist campsites, by month, January – September, 2015 and 2016**



**Graph 2. Percentage distribution (%) of arrivals and nights spent in hotels, similar establishments and tourist campsites, January – September 2016 (provisional data)**



**Graph 3. Average nights spent per person in hotels, similar establishments and tourist campsites, by month, January – September 2016 (provisional data)**

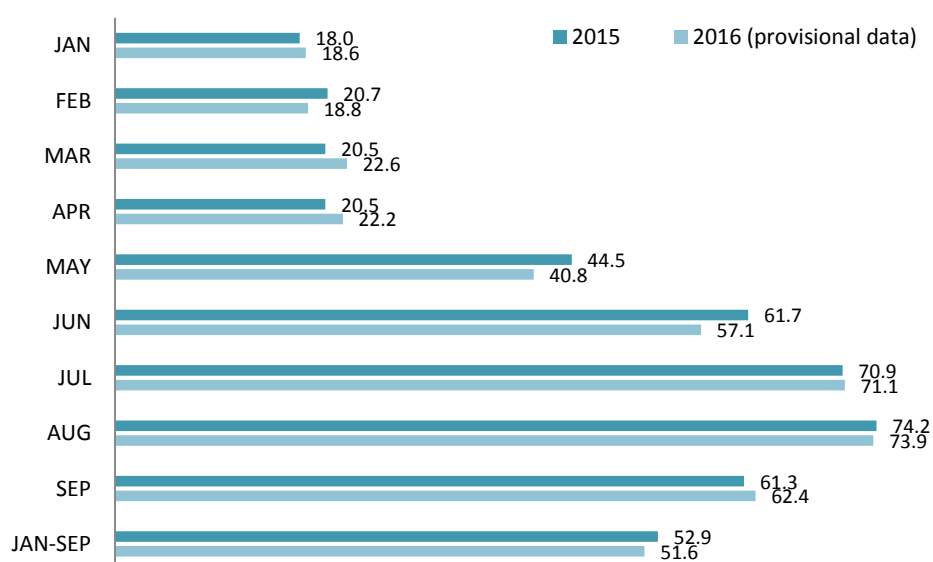


**Table 3. Occupancy of the bed-places that were in operation in hotels and similar establishments, by month, January – September, 2015 and 2016**

Month	2015	2016*
Jan - Sep	52.9	51.6
January	18.0	18.6
February	20.7	18.8
March	20.5	22.6
April	20.5	22.2
May	44.5	40.8
June	61.7	57.1
July	70.9	71.1
August	74.2	73.9
September	61.3	62.4

\*provisional data

**Graph 4. Occupancy of the bed-places that were in operation in hotels and similar establishments, by month, January – September, 2015 and 2016**



## EXPLANATORY NOTES

<b>Arrivals and nights spent at hotels, similar establishments and tourist campsites</b>	Data on arrivals and nights spent at hotels, similar establishments and tourist campsites are collected from a monthly census survey. Each establishment fills in a questionnaire, for every month that it is in operation. It is mandatory for all hotels, similar establishments and tourist campsites to participate in the survey.
<b>Legal frame</b>	The survey is conducted pursuant to Regulation 692/2011 of the European Parliament and of the Council.
<b>Reference unit</b>	Data refer to all establishments (hotels, similar establishments and tourist campsites) that are registered in the Hellenic Chamber of Hotels. ELSTAT receives the register every three months and subsequently it updates its register that is related to the survey.
<b>Coverage</b>	The results of the survey refer to about 80% of the total bed-places that are available. The reason why there is no estimation and projection of the results to 100% of the reference population is the fact that there is no information on the exact months during which each establishment is in operation. The lack of this information makes it impossible to make this estimation for every month and hence for the total of the year.
<b>Data dissemination</b>	Final annual data are published in September of the following year. As regards the annual data there is a press release and detailed tables.
<b>Reference period</b>	January - September 2016
<b>Definitions</b>	<p><u>Resident</u>: every person, regardless of citizenship, that has resided in Greece for at least a year, or has arrived in Greece with the intention to reside in the country for at least 1 year.</p> <p><u>Non-resident</u>: every person, regardless of citizenship, that is not considered to be resident.</p> <p><u>Arrivals</u>: The arrivals at the establishments are calculated for every person separately. The data refer to the total number of persons and not to the total number of rooms that were occupied. Only the persons that had at least one overnight stay at the establishment are counted.</p> <p><u>Nights spent</u>: The nights are calculated for every person separately. The data refer to the total number of nights spent by every person and not to the total number of nights spent in every room.</p> <p><u>Occupancy of bed-places</u>: The monthly occupancy of bed-places is calculated on the basis of the number of the bed-places, as reported by each establishment. The rate refers to the occupancy that was accomplished, as compared with the maximum occupancy that is expected according to the available bed-places.</p> <p>The occupancy of the period is the result of the average occupancy rates of every month of the period, weighted by the bed-places that were in operation for each month.</p>
<b>Methodology</b>	<p>This is a monthly census survey. The data come from the establishments, which fill in a questionnaire (by paper form or on-line application) for every month that each establishment is in operation. During the year ELSTAT updates regularly the register of the hotels, similar establishments and tourist campsites, so that the data refer to the actual number of establishments that are in operation. Moreover, regular reminders for the submission of the data are sent to the establishments, so as ELSTAT can gather as much data as possible.</p> <p>The provisional data, for the period January - September, are based on the data collected from the establishments that responded to the survey and on the estimation of the arrivals and nights spent, taking into account the trend derived from a common sample of establishments and campsites in comparison with the previous year.</p>
<b>References</b>	More information on the survey is available on the web-page of the Hellenic Statistical Authority ( <a href="http://www.statistics.gr">www.statistics.gr</a> ). Section: Industry, Commerce, Services, Transportations, Tourism, "Hotels, similar establishments and campsites occupancy".