



## INDUSTRIAL PRODUCTION INDEX April 2026, y-o-y increase of 2.1%

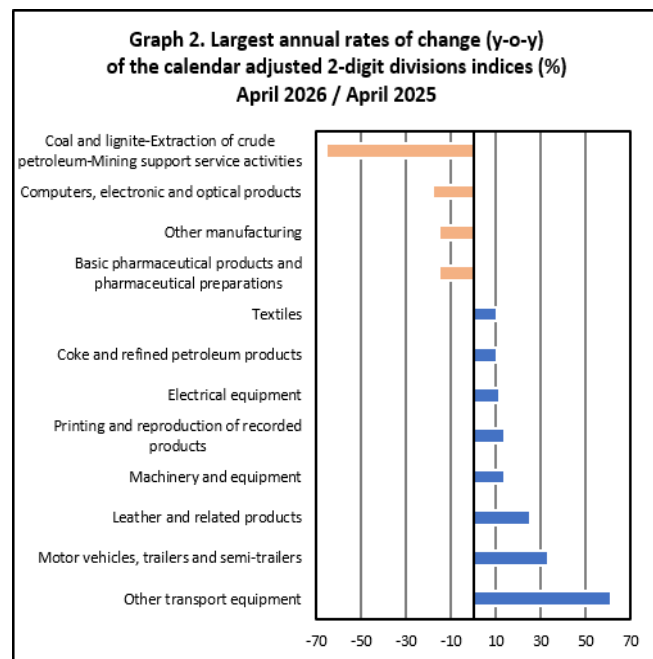
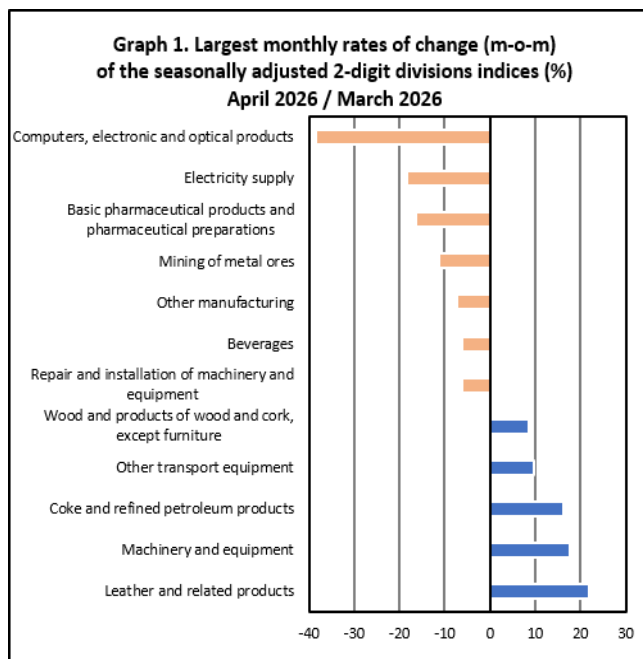
The Hellenic Statistical Authority announces the Industrial Production Index (IPI) with base year 2021=100.0 for April 2026, the evolution of which, on the basis of provisional and working day adjusted data, is as follows:

The Overall Industrial Production Index in April 2026 recorded an increase of 2.1% compared with April 2025. The Overall IPI in April 2025 decreased by 3.6% compared with the corresponding index in April 2024 (Table 1).

The average Overall Industrial Production Index for the period from January to April 2026 recorded an increase of 4.4% compared with the average IPI of the period from January to April 2025 (Table 2).

The seasonally adjusted Overall Industrial Production Index in April 2026 recorded a decrease of 3.5% compared with the corresponding index of March 2026 (Table 4).

The index of computers, electronic and optical products division showed the greatest percentage decrease, whereas the index of leather and related products recorded the greatest percentage increase in April 2026 compared with March 2026. Comparing the indices of April 2026 with the corresponding indices of April 2025, the greatest percentage increase was recorded in other transport equipment division, while the highest percentage decrease was recorded in mining of coal and lignite – extraction of crude petroleum and natural gas – mining support service activities division (Tables 1 and 4).



### Information on methodological issues:

Business Statistics Division  
Manufacture-Construction Indices and Industrial Products Section  
Head of the Section: Vlachokosta Evrydiki  
Tel: +30 213 135 2056  
E-mail: [e.vlachokosta@statistics.gr](mailto:e.vlachokosta@statistics.gr)

### Information on data provision:

Tel: +30 213 135 2025, 2308, 2310  
E-mail: [data.dissem@statistics.gr](mailto:data.dissem@statistics.gr)

## Evolution of the Industrial Production Index in April 2026

### I. Annual changes: April 2026 / April 2025 (Table 1)

The 2.1% increase of the working day adjusted Overall IPI in April 2026, compared with the corresponding index in April 2025, is due to the annual changes of the sub-indices in the following industrial sections:

#### Increase of:

- 9.8 in the Electricity Supply Index.
- 1.0% in the Manufacturing Index. The increase was mainly the result of the annual changes of the sub-indices in the following 2-digit divisions: other transport equipment, motor vehicles, trailers and semi-trailers, leather and related products, machinery and equipment n. e. c., printing and reproduction of recorded products.
- 0.1% in the Water Supply Index.

#### Decrease of:

- 2.8% in the Mining and Quarrying Index. The decrease was the result of the annual changes of the sub-indices in the following 2-digit divisions: mining of coal and lignite - extraction of crude petroleum and natural gas - mining support service activities.

### II. Rates of change of the average index of the period January - April 2026 compared with the corresponding index of the period January - April 2025 (Table 2)

The 4.4% increase of the working day adjusted average Overall IPI in the 4-month period January - April 2026, compared with the corresponding index in January - April 2025, is due to the corresponding rates of change of the sub-indices in the following industrial sections:

#### Increase of:

- 13.2% in the Electricity Supply Index.
- 2.8% in the Manufacturing Index.

#### Decrease of:

- 1.1% in the Water Supply Index.
- 12.7% in the Mining and Quarrying Index.

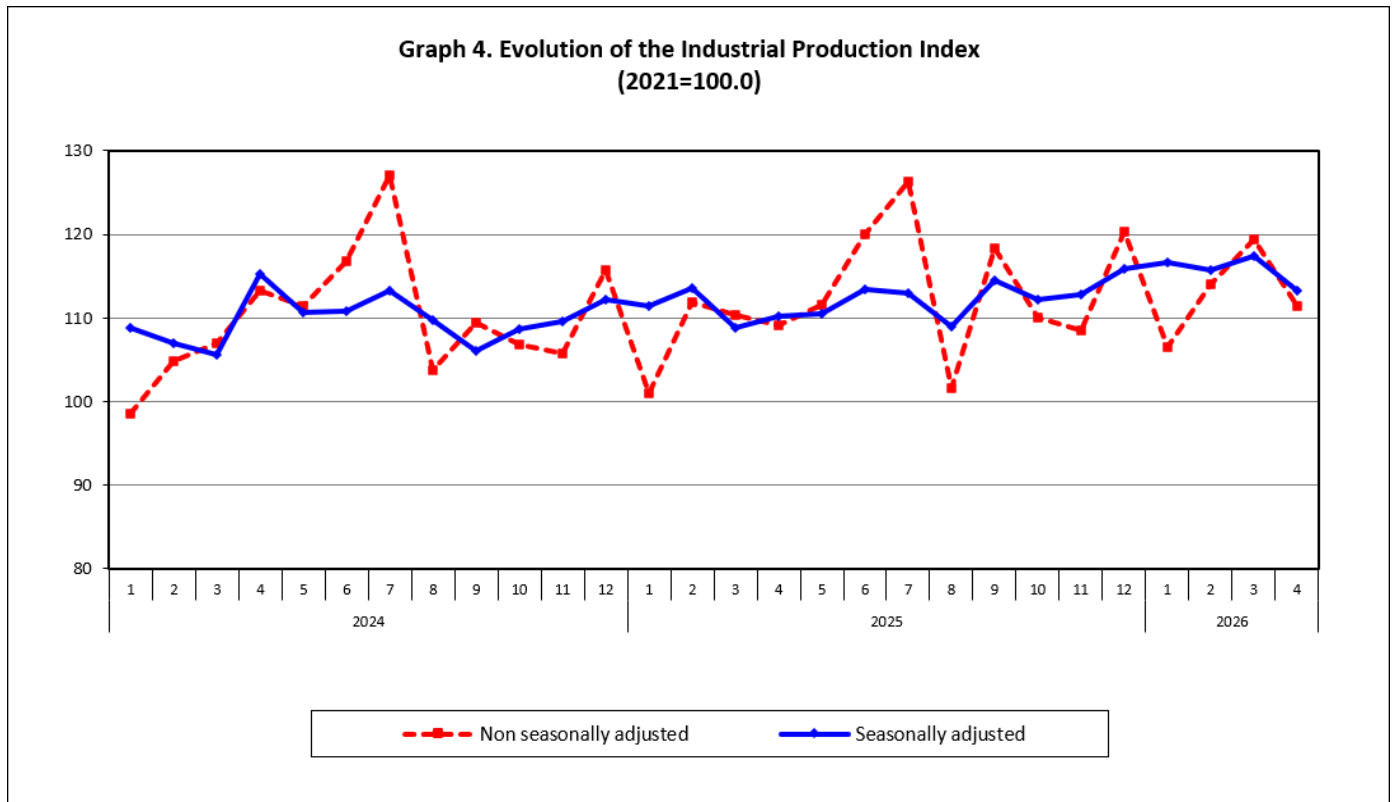
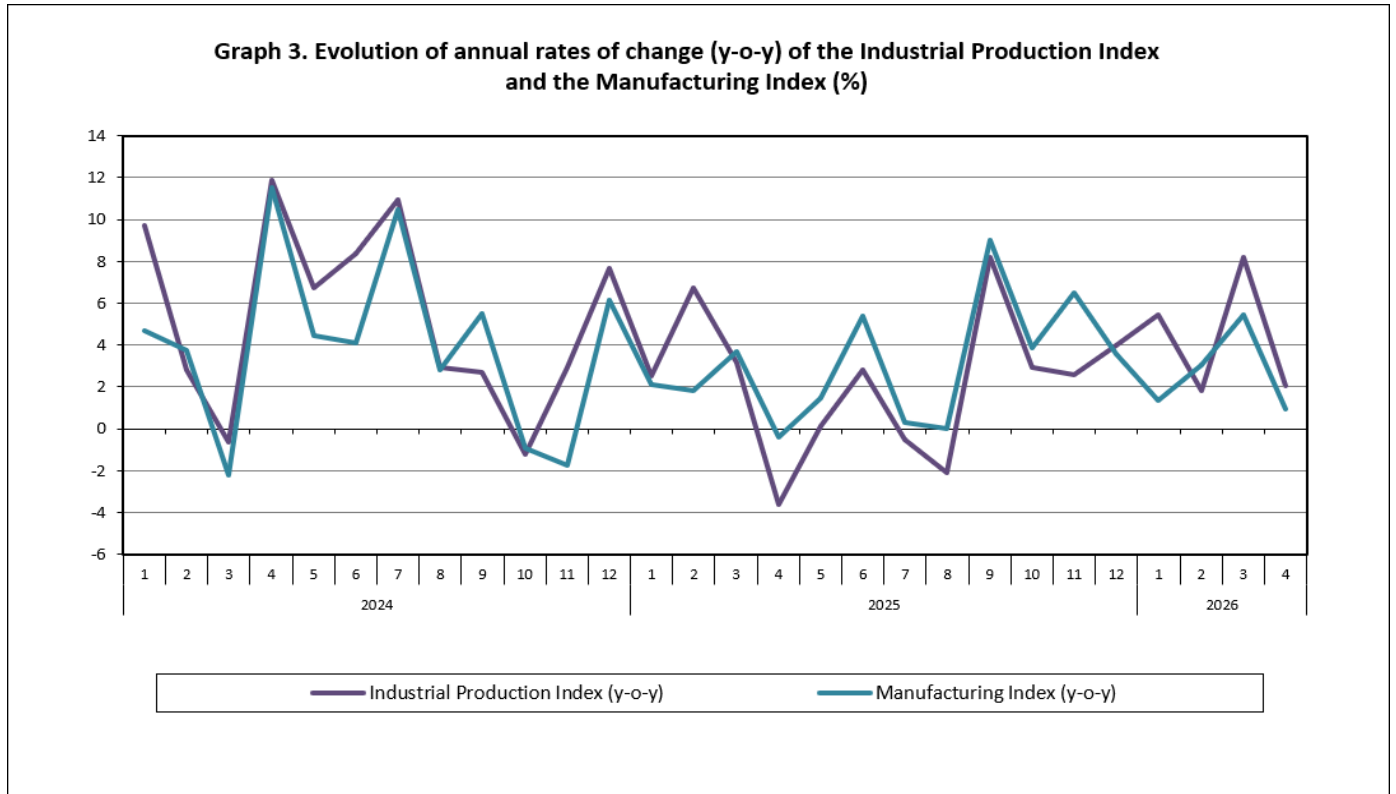
### III. Monthly changes: April 2026 / March 2026 (Table 4)

The 3.5% decrease of the seasonally adjusted Overall IPI in April 2026, compared with the corresponding index in March 2026, is due to the monthly changes of the sub-indices in the following industrial sections:

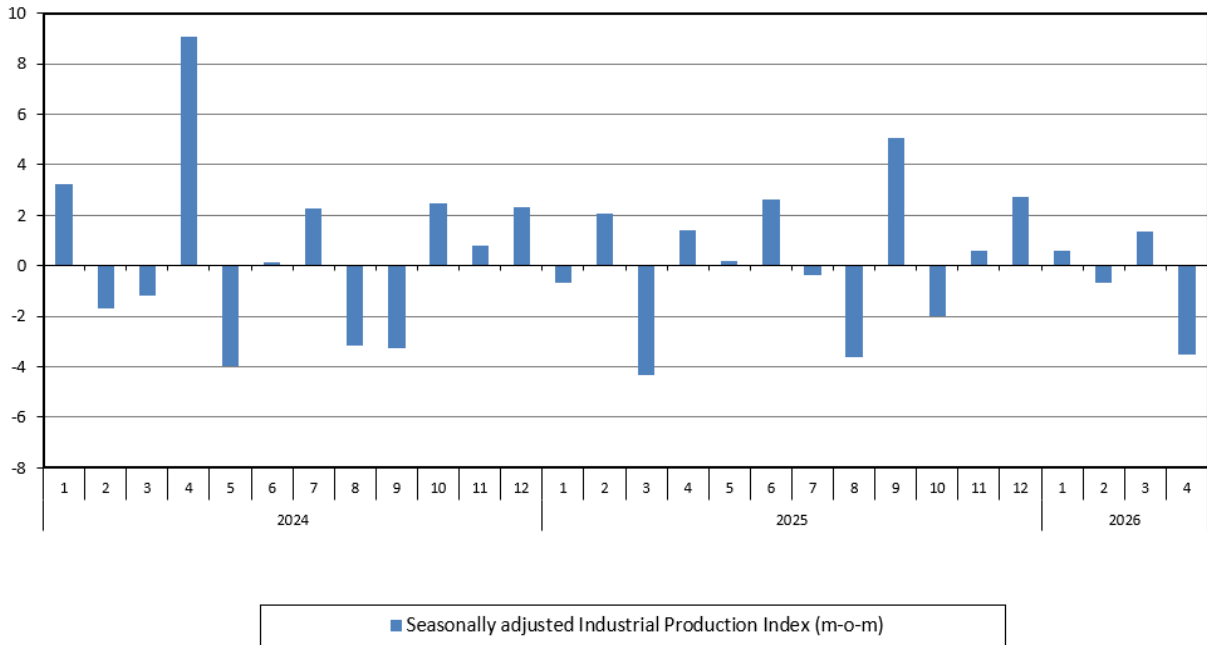
#### Decrease of:

- 18.4% in the Electricity Supply Index.
- 2.0% in the Water Supply Index.
- 1.8% in the Manufacturing Index.
- 0.5% in the Mining and Quarrying Index.

The following graphs depict the annual rates of change (y-o-y) of the Industrial Production Index and the Manufacturing Index, the evolution of the seasonally and non-seasonally adjusted Overall Industrial Production Index, as well as the monthly rates of change (m-o-m) of the seasonally adjusted index.



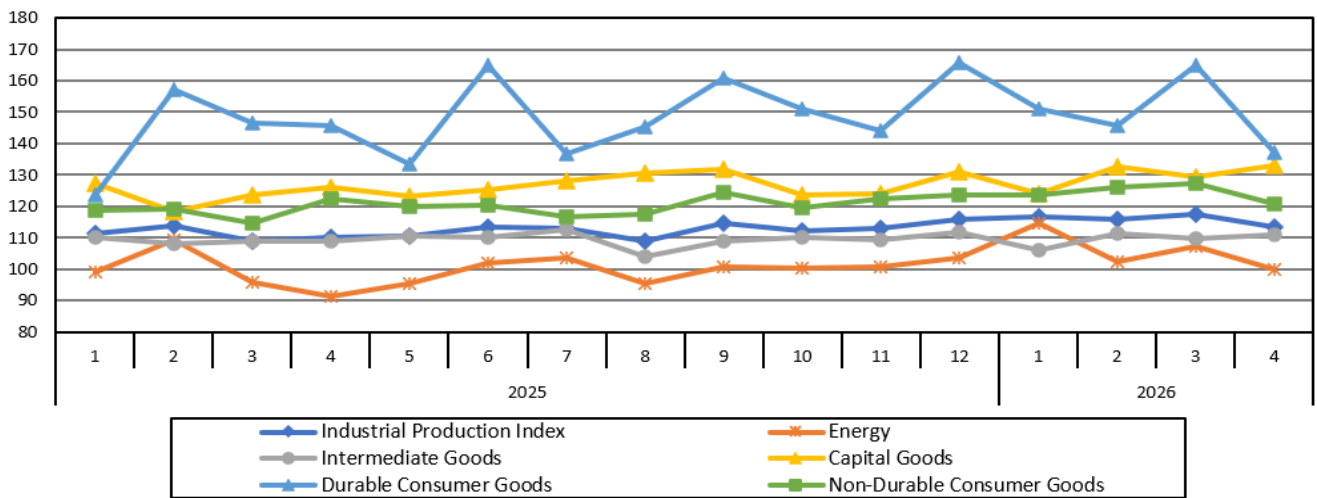
**Graph 5. Evolution of the monthly rates of change (m-o-m) of the seasonally adjusted Industrial Production Index (%)**



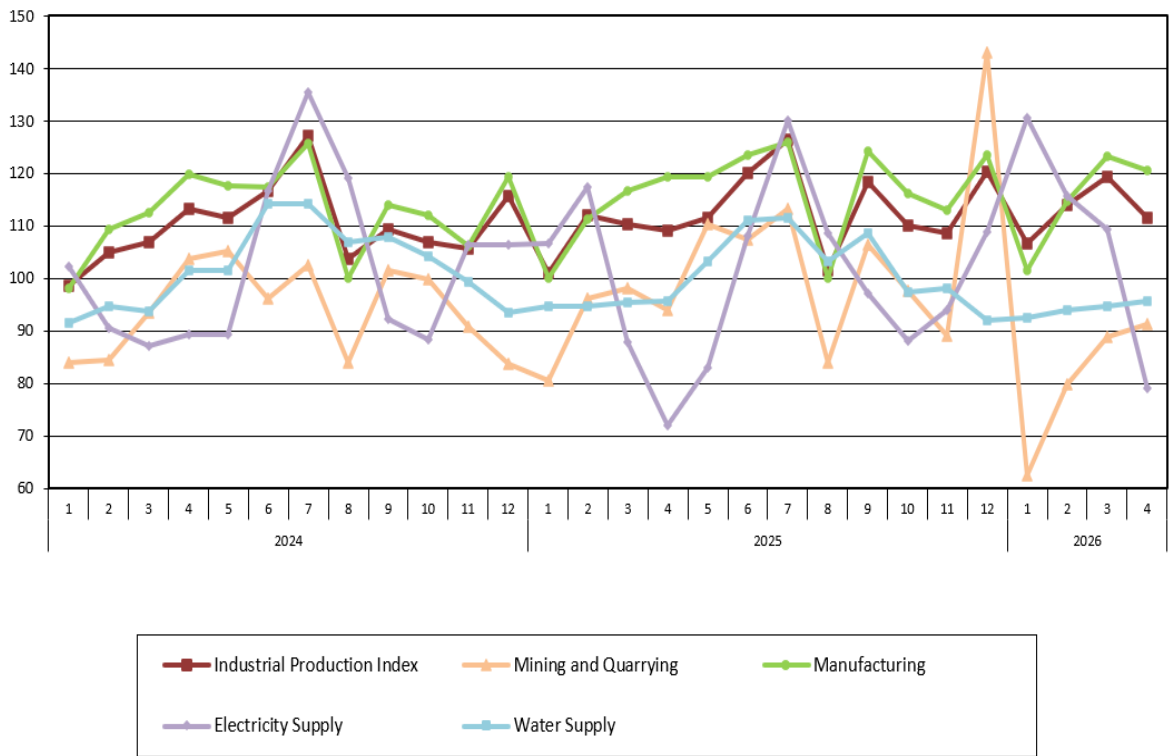
It should be noted that the time series with the seasonally adjusted indices is recalculated every time a new observation is added in the time series. Therefore, the seasonally adjusted data differ from the data published in the previous Announcement.

The following graphs depict the evolution of the seasonally adjusted Industrial Production Index and the Main Industrial Groupings, as well as the evolution of the Industrial Production Index and the Industrial Sections Indices.

**Graph 6. Evolution of the seasonally adjusted Industrial Production Index and the Main Industrial Groupings Indices, January 2025 - April 2026 (2021=100.0)**



**Graph 7. Evolution of the Industrial Production Index and the Industrial Section Indices  
(2021=100.0)**



**Table 1. Annual rates of change of the Industrial Production Index***(Working day adjusted data, according to the real number of working days)***Base year: 2021=100.0**

Code	Division	April			Rate of change (%)	
		2026*	2025*	2024	2026/2025	2025/2024
<b>OVERALL INDEX</b>		<b>111.39</b>	<b>109.13</b>	<b>113.22</b>	<b>2.1</b>	<b>-3.6</b>
<b>B</b>	<b>MINING AND QUARRYING</b>	<b>91.25</b>	<b>93.91</b>	<b>103.59</b>	<b>-2.8</b>	<b>-9.3</b>
<b>05-06-09</b>	Mining of coal and lignite – Extraction of crude petroleum and natural gas – Mining support service activities	46.14	135.05	113.68	-65.8	18.8
<b>07</b>	Mining of metal ores	100.43	96.48	95.57	4.1	1.0
<b>08</b>	Other mining and quarrying	92.40	91.38	104.14	1.1	-12.2
<b>C</b>	<b>MANUFACTURING</b>	<b>120.55</b>	<b>119.40</b>	<b>119.86</b>	<b>1.0</b>	<b>-0.4</b>
<b>10</b>	Food	124.07	123.09	117.12	0.8	5.1
<b>11</b>	Beverages	116.87	120.02	122.18	-2.6	-1.8
<b>12</b>	Tobacco products	177.05	164.04	151.13	7.9	8.5
<b>13</b>	Textiles	121.25	109.81	103.19	10.4	6.4
<b>14</b>	Wearing apparel	73.23	69.84	89.56	4.9	-22.0
<b>15</b>	Leather and related products	133.43	106.47	160.25	25.3	-33.6
<b>16</b>	Wood and products of wood and cork, except furniture	108.16	101.43	100.08	6.6	1.4
<b>17</b>	Paper and paper products	106.53	108.46	108.42	-1.8	0.0
<b>18</b>	Printing and reproduction of recorded products	135.87	119.68	128.00	13.5	-6.5
<b>19</b>	Coke and refined petroleum products	90.45	81.79	109.90	10.6	-25.6
<b>20</b>	Chemicals and chemical products	125.17	124.89	120.27	0.2	3.8
<b>21</b>	Basic pharmaceutical products and pharmaceutical preparations	131.10	154.79	148.25	-15.3	4.4
<b>22</b>	Rubber and plastic products	123.13	114.08	110.15	7.9	3.6
<b>23</b>	Other non-metallic mineral products	125.34	133.12	136.03	-5.8	-2.1
<b>24</b>	Basic metals	106.36	106.96	104.31	-0.6	2.5
<b>25</b>	Fabricated metal products, except machinery and equipment	116.23	114.52	113.77	1.5	0.7
<b>26</b>	Computers, electronic and optical products	104.72	128.07	138.34	-18.2	-7.4
<b>27</b>	Electrical equipment	134.29	120.52	112.48	11.4	7.1
<b>28</b>	Machinery and equipment n. e. c.	134.12	118.11	109.46	13.6	7.9
<b>29</b>	Motor vehicles, trailers and semi-trailers	99.74	74.74	120.60	33.4	-38.0
<b>30</b>	Other transport equipment	269.46	167.19	187.05	61.2	-10.6
<b>31</b>	Furniture	141.93	145.25	161.58	-2.3	-10.1
<b>32</b>	Other manufacturing	120.55	142.54	132.16	-15.4	7.8
<b>33</b>	Repair and installation of machinery and equipment	135.70	140.00	132.61	-3.1	5.6
<b>D</b>	<b>ELECTRICITY SUPPLY</b>	<b>78.97</b>	<b>71.92</b>	<b>89.38</b>	<b>9.8</b>	<b>-19.5</b>
<b>35</b>	Electricity supply	78.97	71.92	89.38	9.8	-19.5
<b>E</b>	<b>WATER SUPPLY</b>	<b>95.68</b>	<b>95.56</b>	<b>101.58</b>	<b>0.1</b>	<b>-5.9</b>
<b>36</b>	Water collection, treatment and supply	95.68	95.56	101.58	0.1	-5.9
<b>MAIN INDUSTRIAL GROUPINGS</b>						
<b>1</b>	Energy	82.98	76.15	95.60	9.0	-20.3
<b>2</b>	Intermediate goods	115.80	113.70	112.20	1.9	1.3
<b>3</b>	Capital goods	135.56	127.92	120.58	6.0	6.1
<b>4</b>	Consumer Durables	131.02	148.82	174.09	-12.0	-14.5
<b>5</b>	Consumer Non-Durables	125.99	127.85	124.50	-1.5	2.7

\* Provisional data

*Note: The indices are rounded up to two decimal digits when published and percentage changes up to one decimal digit when published.*

**Table 2. Average indices of the period January – April and rates of change of the Industrial Production Index**  
(Working day adjusted data, according to the real number of working days)

		Base year: 2021=100.0				
Code	Division	Average indices of the period Jan.-Apr.			Rate of change (%)	
		2026*	2025*	2024	2026/2025	2025/2024
<b>OVERALL INDEX</b>		<b>112.81</b>	<b>108.10</b>	<b>105.89</b>	<b>4.4</b>	<b>2.1</b>
<b>B</b>	<b>MINING AND QUARRYING</b>	<b>80.53</b>	<b>92.20</b>	<b>91.40</b>	<b>-12.7</b>	<b>0.9</b>
05-06-09	Mining of coal and lignite – Extraction of crude petroleum and natural gas – Mining support service activities	37.12	134.69	104.01	-72.4	29.5
07	Mining of metal ores	93.55	84.53	99.66	10.7	-15.2
08	Other mining and quarrying	81.07	90.98	89.62	-10.9	1.5
<b>C</b>	<b>MANUFACTURING</b>	<b>114.95</b>	<b>111.87</b>	<b>109.93</b>	<b>2.8</b>	<b>1.8</b>
10	Food	120.25	113.77	107.94	5.7	5.4
11	Beverages	95.91	96.91	96.97	-1.0	-0.1
12	Tobacco products	165.81	163.81	140.13	1.2	16.9
13	Textiles	115.79	104.42	99.61	10.9	4.8
14	Wearing apparel	73.42	74.68	88.44	-1.7	-15.6
15	Leather and related products	93.67	98.32	118.86	-4.7	-17.3
16	Wood and products of wood and cork, except furniture	92.68	96.19	100.14	-3.7	-3.9
17	Paper and paper products	106.61	102.05	103.59	4.5	-1.5
18	Printing and reproduction of recorded products	121.65	113.47	116.18	7.2	-2.3
19	Coke and refined petroleum products	89.34	94.48	106.51	-5.4	-11.3
20	Chemicals and chemical products	116.53	114.73	113.08	1.6	1.5
21	Basic pharmaceutical products and pharmaceutical preparations	149.37	135.77	136.94	10.0	-0.9
22	Rubber and plastic products	111.54	108.13	104.02	3.2	3.9
23	Other non-metallic mineral products	118.99	122.98	121.75	-3.2	1.0
24	Basic metals	103.55	108.05	101.61	-4.2	6.3
25	Fabricated metal products, except machinery and equipment	98.62	97.55	98.86	1.1	-1.3
26	Computers, electronic and optical products	159.14	139.90	152.33	13.8	-8.2
27	Electrical equipment	125.26	116.89	106.95	7.2	9.3
28	Machinery and equipment n. e. c.	107.65	99.27	101.85	8.4	-2.5
29	Motor vehicles, trailers and semi-trailers	101.87	89.27	98.52	14.1	-9.4
30	Other transport equipment	149.92	109.95	125.98	36.4	-12.7
31	Furniture	108.63	110.57	114.17	-1.7	-3.2
32	Other manufacturing	106.71	111.24	104.60	-4.1	6.4
33	Repair and installation of machinery and equipment	134.14	130.35	108.44	2.9	20.2
<b>D</b>	<b>ELECTRICITY SUPPLY</b>	<b>108.63</b>	<b>95.93</b>	<b>92.33</b>	<b>13.2</b>	<b>3.9</b>
35	Electricity supply	108.63	95.93	92.33	13.2	3.9
<b>E</b>	<b>WATER SUPPLY</b>	<b>94.17</b>	<b>95.24</b>	<b>95.35</b>	<b>-1.1</b>	<b>-0.1</b>
36	Water collection, treatment and supply	94.17	95.24	95.35	-1.1	-0.1
<b>MAIN INDUSTRIAL GROUPINGS</b>						
1	Energy	102.51	95.60	96.28	7.2	-0.7
2	Intermediate goods	109.10	108.45	105.65	0.6	2.6
3	Capital goods	116.82	111.15	105.04	5.1	5.8
4	Consumer Durables	138.09	133.51	137.72	3.4	-3.1
5	Consumer Non-Durables	122.67	116.84	113.13	5.0	3.3

\* Provisional data

Note: The indices are rounded up to two decimal digits when published and percentage changes up to one decimal digit when published.

**Table 3. Monthly rate of change of the Industrial Production Index***(Working day adjusted data, according to the real number of working days)***Base year: 2021=100.0**

Code	Division	April 2026*	March 2026*	Rate of change (%) Apr.2026/Mar.2026
<b>OVERALL INDEX</b>		<b>111.39</b>	<b>119.32</b>	<b>-6.7</b>
<b>B</b>	<b>MINING AND QUARRYING</b>	<b>91.25</b>	<b>88.78</b>	<b>2.8</b>
05-06-09	Mining of coal and lignite – Extraction of crude petroleum and natural gas – Mining support service activities	46.14	63.52	-27.4
07	Mining of metal ores	100.43	115.22	-12.8
08	Other mining and quarrying	92.40	86.54	6.8
<b>C</b>	<b>MANUFACTURING</b>	<b>120.55</b>	<b>123.10</b>	<b>-2.1</b>
10	Food	124.07	123.79	0.2
11	Beverages	116.87	113.15	3.3
12	Tobacco products	177.05	179.59	-1.4
13	Textiles	121.25	131.60	-7.9
14	Wearing apparel	73.23	71.52	2.4
15	Leather and related products	133.43	102.96	29.6
16	Wood and products of wood and cork, except furniture	108.16	103.43	4.6
17	Paper and paper products	106.53	109.24	-2.5
18	Printing and reproduction of recorded products	135.87	135.22	0.5
19	Coke and refined petroleum products	90.45	77.94	16.1
20	Chemicals and chemical products	125.17	130.57	-4.1
21	Basic pharmaceutical products and pharmaceutical preparations	131.10	160.48	-18.3
22	Rubber and plastic products	123.13	121.14	1.6
23	Other non-metallic mineral products	125.34	131.78	-4.9
24	Basic metals	106.36	105.44	0.9
25	Fabricated metal products, except machinery and equipment	116.23	105.84	9.8
26	Computers, electronic and optical products	104.72	267.85	-60.9
27	Electrical equipment	134.29	128.83	4.2
28	Machinery and equipment n. e. c.	134.12	110.21	21.7
29	Motor vehicles, trailers and semi-trailers	99.74	124.29	-19.8
30	Other transport equipment	269.46	191.82	40.5
31	Furniture	141.93	132.15	7.4
32	Other manufacturing	120.55	117.48	2.6
33	Repair and installation of machinery and equipment	135.70	158.35	-14.3
<b>D</b>	<b>ELECTRICITY SUPPLY</b>	<b>78.97</b>	<b>109.26</b>	<b>-27.7</b>
35	Electricity supply	78.97	109.26	-27.7
<b>E</b>	<b>WATER SUPPLY</b>	<b>95.68</b>	<b>94.67</b>	<b>1.1</b>
36	Water collection, treatment and supply	95.68	94.67	1.1
<b>MAIN INDUSTRIAL GROUPINGS</b>				
1	Energy	82.98	100.03	-17.0
2	Intermediate goods	115.80	115.97	-0.1
3	Capital goods	135.56	129.31	4.8
4	Consumer Durables	131.02	212.39	-38.3
5	Consumer Non-Durables	125.99	131.48	-4.2

\* Provisional data

Note: The indices are rounded up to two decimal digits when published and percentage changes up to one decimal digit when published.

**Table 4. Monthly rate of change of the seasonally adjusted Industrial Production Index**

Base year: 2021=100.0

Code	Division	April 2026*	March 2026*	Rate of change (%) Apr. 2026/Mar. 2026
<b>OVERALL INDEX</b>		<b>113.25</b>	<b>117.35</b>	<b>-3.5</b>
<b>B</b>	<b>MINING AND QUARRYING</b>	<b>90.06</b>	<b>90.51</b>	<b>-0.5</b>
05-06-09	Mining of coal and lignite – Extraction of crude petroleum and natural gas – Mining support service activities	-	-	-
07	Mining of metal ores	99.44	112.04	-11.2
08	Other mining and quarrying	92.34	92.19	0.2
<b>C</b>	<b>MANUFACTURING</b>	<b>116.81</b>	<b>118.96</b>	<b>-1.8</b>
10	Food	122.62	125.34	-2.2
11	Beverages	104.13	111.11	-6.3
12	Tobacco products	169.18	165.47	2.2
13	Textiles	112.59	111.87	0.6
14	Wearing apparel	73.74	70.48	4.6
15	Leather and related products	95.71	78.47	22.0
16	Wood and products of wood and cork, except furniture	102.29	94.29	8.5
17	Paper and paper products	103.18	104.74	-1.5
18	Printing and reproduction of recorded products	128.37	129.49	-0.9
19	Coke and refined petroleum products	93.02	80.07	16.2
20	Chemicals and chemical products	113.23	114.56	-1.2
21	Basic pharmaceutical products and pharmaceutical preparations	127.54	152.76	-16.5
22	Rubber and plastic products	112.22	109.89	2.1
23	Other non-metallic mineral products	117.57	122.31	-3.9
24	Basic metals	104.29	99.01	5.3
25	Fabricated metal products, except machinery and equipment	109.62	105.42	4.0
26	Computers, electronic and optical products	128.80	209.65	-38.6
27	Electrical equipment	133.63	126.61	5.5
28	Machinery and equipment n. e. c.	125.27	106.53	17.6
29	Motor vehicles, trailers and semi-trailers	124.00	131.37	-5.6
30	Other transport equipment	187.26	170.71	9.7
31	Furniture	112.47	118.56	-5.1
32	Other manufacturing	108.34	116.74	-7.2
33	Repair and installation of machinery and equipment	144.95	154.60	-6.2
<b>D</b>	<b>ELECTRICITY SUPPLY</b>	<b>97.09</b>	<b>118.94</b>	<b>-18.4</b>
35	Electricity supply	97.09	118.94	-18.4
<b>E</b>	<b>WATER SUPPLY</b>	<b>99.36</b>	<b>101.39</b>	<b>-2.0</b>
36	Water collection, treatment and supply	99.36	101.39	-2.0
<b>MAIN INDUSTRIAL GROUPINGS</b>				
1	Energy	99.84	107.17	-6.8
2	Intermediate goods	110.92	109.63	1.2
3	Capital goods	132.82	129.19	2.8
4	Consumer Durables	136.99	165.11	-17.0
5	Consumer Non-Durables	120.93	127.46	-5.1

Notes:

1. The indices are rounded up to two decimal digits when published and percentage changes up to one decimal digit when published.
2. The whole time-series with seasonally adjusted indices is recalculated every time a new observation is added in the time-series.
3. The composed index of divisions 05-06-09 is not seasonally adjusted.

**Table 5. Evolution of the Overall Industrial Production Index**  
*(Working day adjusted data, according to the real number of working days)*

Base year: 2021=100.0

Year and month	Overall Index	Monthly rate of change (%)	Annual rate of change (%)	12-month average index (moving average)	Rate of change of the 12-month average index (%)
<b>2024:</b> 1	98.53	-8.3	9.7	105.14	2.6
2	104.89	6.4	2.8	105.38	2.6
3	106.92	1.9	-0.7	105.32	2.5
4	113.22	5.9	11.9	106.32	3.2
5	111.42	-1.6	6.7	106.91	3.6
6	116.74	4.8	8.4	107.66	4.5
7	127.03	8.8	11.0	108.70	5.7
8	103.70	-18.4	2.9	108.95	5.9
9	109.39	5.5	2.7	109.19	6.1
10	106.86	-2.3	-1.2	109.08	5.1
11	105.77	-1.0	2.9	109.33	5.1
12	115.70	9.4	7.7	110.01	5.4
<b>Annual average</b>	<b>110.01</b>				
<b>2025*:</b> 1	101.02	-12.7	2.5	110.22	4.8
2	111.94	10.8	6.7	110.81	5.2
3	110.29	-1.5	3.2	111.09	5.5
4	109.13	-1.1	-3.6	110.75	4.2
5	111.57	2.2	0.1	110.76	3.6
6	120.04	7.6	2.8	111.04	3.1
7	126.36	5.3	-0.5	110.98	2.1
8	101.56	-19.6	-2.1	110.80	1.7
9	118.34	16.5	8.2	111.55	2.2
10	109.99	-7.1	2.9	111.81	2.5
11	108.50	-1.4	2.6	112.04	2.5
12	120.31	10.9	4.0	112.42	2.2
<b>Annual average</b>	<b>112.42</b>				
<b>2026*:</b> 1	106,56	-11,4	5,5	112,88	2,4
2	113,96	6,9	1,8	113,05	2,0
3	119,32	4,7	8,2	113,80	2,4
4	111,39	-6,7	2,1	113,99	2,9

\* Provisional data

Note: The indices are rounded up to two decimal digits when published and percentage changes up to one decimal digit when published.

**Table 6. Monthly evolution of the seasonally adjusted Overall Industrial Production Index and Main Industrial Groupings**

Base year: 2021=100.0

Year and month	Overall Index		Energy		Intermediate goods		Capital goods		Consumer durables		Consumer non-durables	
	Index	Monthly rate of change (%)	Index	Monthly rate of change (%)	Index	Monthly rate of change (%)	Index	Monthly rate of change (%)	Index	Monthly rate of change (%)	Index	Monthly rate of change (%)
<b>2024:</b>												
1	108.78	3.2	96.97	5.5	106.04	-0.1	114.26	-6.8	169.32	35.6	116.99	5.0
2	106.94	-1.7	94.05	-3.0	107.96	1.8	118.00	3.3	138.71	-18.1	113.05	-3.4
3	105.66	-1.2	97.82	4.0	102.96	-4.6	114.41	-3.0	140.78	1.5	110.80	-2.0
4	115.23	9.1	113.76	16.3	107.58	4.5	120.47	5.3	160.81	14.2	119.21	7.6
5	110.64	-4.0	106.47	-6.4	102.94	-4.3	117.11	-2.8	153.77	-4.4	116.96	-1.9
6	110.79	0.1	111.92	5.1	102.72	-0.2	113.63	-3.0	127.49	-17.1	115.06	-1.6
7	113.29	2.3	107.55	-3.9	105.94	3.1	120.55	6.1	150.72	18.2	120.85	5.0
8	109.69	-3.2	103.31	-3.9	103.30	-2.5	109.44	-9.2	126.82	-15.9	120.15	-0.6
9	106.10	-3.3	93.33	-9.7	105.42	2.0	113.77	4.0	137.29	8.3	114.51	-4.7
10	108.74	2.5	96.61	3.5	106.29	0.8	124.90	9.8	125.73	-8.4	116.66	1.9
11	109.59	0.8	105.80	9.5	104.98	-1.2	116.12	-7.0	134.46	6.9	113.89	-2.4
12	112.11	2.3	100.56	-5.0	109.68	4.5	126.71	9.1	156.85	16.7	118.30	3.9
<b>Annual average</b>	<b>109.80</b>		<b>102.35</b>		<b>105.48</b>		<b>117.45</b>		<b>143.56</b>		<b>116.37</b>	
<b>2025:</b>												
1	111.35	-0.7	99.17	-1.4	110.00	0.3	127.10	0.3	123.56	-21.2	118.75	0.4
2	113.64	2.1	109.21	10.1	107.88	-1.9	118.42	-6.8	157.10	27.1	118.91	0.1
3	108.74	-4.3	95.68	-12.4	108.86	0.9	123.67	4.4	146.56	-6.7	114.41	-3.8
4	110.27	1.4	91.29	-4.6	108.92	0.1	126.05	1.9	145.64	-0.6	122.53	7.1
5	110.49	0.2	95.17	4.2	110.57	1.5	123.12	-2.3	133.60	-8.3	119.72	-2.3
6	113.39	2.6	102.11	7.3	110.28	-0.3	125.32	1.8	164.89	23.4	120.25	0.4
7	112.98	-0.4	103.38	1.2	112.70	2.2	128.02	2.1	136.74	-17.1	116.62	-3.0
8	108.90	-3.6	95.45	-7.7	104.16	-7.6	130.54	2.0	145.18	6.2	117.47	0.7
9	114.43	5.1	100.83	5.6	109.03	4.7	131.60	0.8	160.80	10.8	124.32	5.8
10	112.16	-2.0	100.11	-0.7	110.03	0.9	123.73	-6.0	151.21	-6.0	119.67	-3.7
11	112.82	0.6	100.51	0.4	109.25	-0.7	123.86	0.1	144.06	-4.7	122.43	2.3
12	115.88	2.7	103.71	3.2	111.87	2.4	131.13	5.9	165.94	15.2	123.55	0.9
<b>Annual average</b>	<b>112.09</b>		<b>99.72</b>		<b>109.46</b>		<b>126.05</b>		<b>147.94</b>		<b>119.89</b>	
<b>2026:</b>												
1	116.57	0.6	114.54	10.4	106.03	-5.2	124.06	-5.4	151.03	-9.0	123.64	0.1
2	115.76	-0.7	102.14	-10.8	111.26	4.9	132.52	6.8	145.50	-3.7	125.94	1.9
3	117.35	1.4	107.17	4.9	109.63	-1.5	129.19	-2.5	165.11	13.5	127.46	1.2
4	113.25	-3.5	99.84	-6.8	110.92	1.2	132.82	2.8	136.99	-17.0	120.93	-5.1

- Notes:
1. The indices are rounded up to two decimal digits when published and percentage changes up to one decimal digit when published.
  2. The whole time-series with seasonally adjusted indices is recalculated every time a new observation is added in the time-series.

## METHODOLOGICAL NOTES

<b>Generally</b>	The Industrial Production Index (IPI) in Greece has been compiled by the Hellenic Statistical Authority (ELSTAT) from 1959 onwards.
<b>Purpose of the index</b>	The objective of the index is to compare the magnitude (volume) of the output in the current month in the mining and quarrying, manufacturing, electricity and water supply divisions with the corresponding output of a given fixed period, which is considered as base period. The Industrial Production Index shows the evolution of the value added of the production factors cost, at constant prices.
<b>Legal framework</b>	The compilation of the IPI, is governed by Council Regulation (EU) No 2019/2152 of the European Parliament and of the Council on European business statistics (EBS-Regulation), as well as the Commission Implementing Regulation (EU) No 2020/1197 laying down technical specifications and arrangements pursuant to Regulation (EU) No 2019/2152. Furthermore, the IPI is governed by Regulation (EC) No 1893/2006 of the European Parliament and of the Council.
<b>Reference period</b>	Month.
<b>Base year</b>	2021=100.0.
<b>Revision</b>	Pursuant to the provisions of Council Regulation No 2019/2152 concerning the Industrial Production Index, it is updated, every five (5) years, in years ending in 0 or 5, while, in the current revision 2021=100.0 due to the impact of the pandemic, it is revised with base year the year 2021.
<b>Statistical classifications</b>	At the level of branches of economic activities, the statistical classification of economic activities NACE Rev.2 of EU was used (Regulation No 1893/2006), while at the level of main industrial groupings, the allocation of two-digit and three-digit NACE Rev. 2 headings to categories of aggregate classification was used, in accordance with Council Regulation No 656/2007. At product level, the statistical classification CPA 2008 of EU was used, according to Council Regulation No 451/2008.
<b>Geographical coverage</b>	The index covers the whole Country.
<b>Coverage of economic activities</b>	The index covers all the sections of industry, the main industrial groups, as well as all levels of economic activity.
<b>Statistical survey</b>	The data are collected from a sample of 1,152 enterprises. The survey covers 313 products and the measurement of the surveyed products is made in terms of output quantities or in terms of production value or turnover, according to the specific features in each branch of economic activity.
<b>Seasonal adjustment</b>	Seasonal adjustment is the procedure followed to remove the impact of seasonality on the time-series (i.e. the impact of monthly effects, e.g. holidays, tourist period etc.), in order to improve comparability over time. The method applied is TRAMO-SEATS with the use of JDemetra+ 2.0.0. For the seasonal adjustment of the Industrial Production Index at 2-digit level of NACE Rev.2, at section level (B – Mining and Quarrying, C – Manufacturing, D – Electricity and E – Water Supply) and for the Main Industrial Groupings (MIGs), the direct approach is applied, namely each time-series is seasonally adjusted independently. For the overall Industrial Production Index, the indirect approach is applied, with the seasonally adjusted IPI being computed by aggregating the seasonally adjusted MIGs using appropriate weights.
<b>Publication of data</b>	The revised IPI with the new base year 2021 (2021=100.0) is released since February 2026, with December 2025 as the first reference month. Data with base year 2021=100.0 are available from January 2000 onwards.
<b>References</b>	More information about the methodology concerning the compilation and calculation of the index and the time series shall be available on the website of the Hellenic Statistical Authority (ELSTAT) ( <a href="http://www.statistics.gr/en/statistics/-/publication/DKT21/-">http://www.statistics.gr/en/statistics/-/publication/DKT21/-</a> ).