



EVOLUTION OF TURNOVER OF ENTERPRISES IN ACCOMMODATION AND FOOD SERVICE ACTIVITIES JANUARY 2024

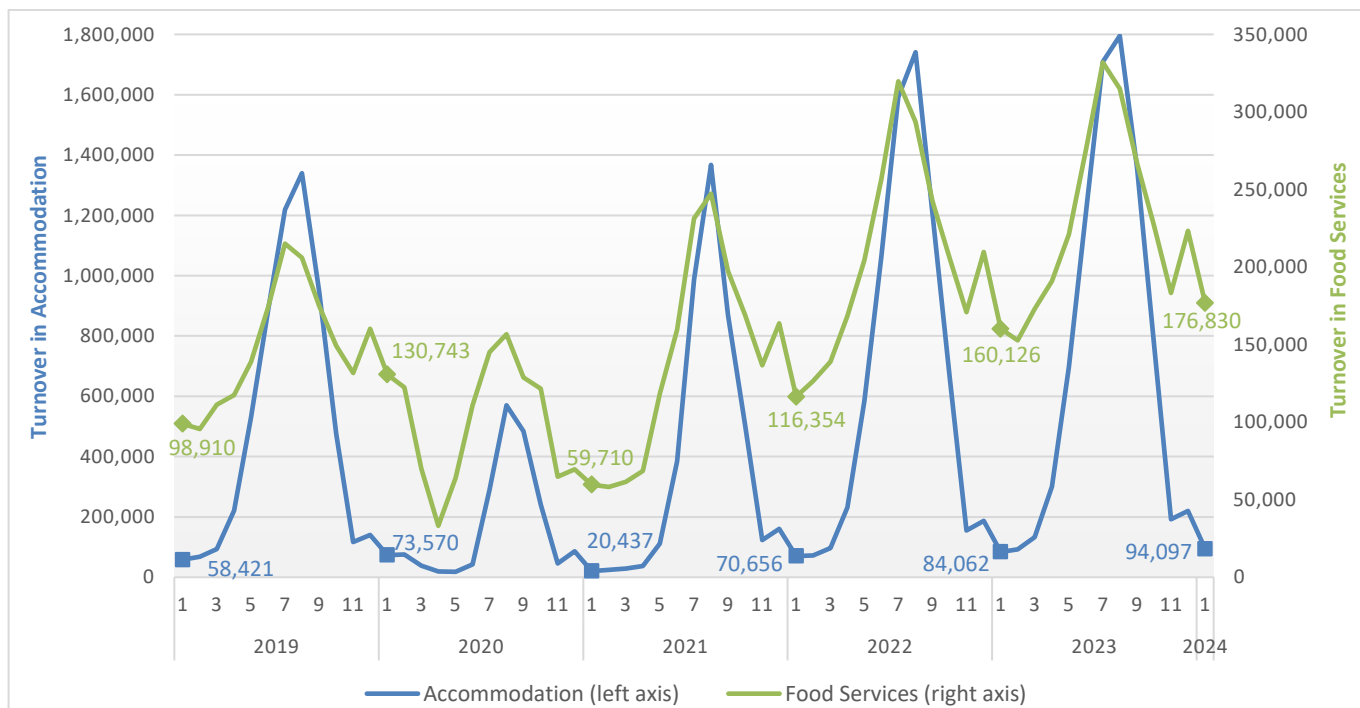
The Hellenic Statistical Authority (ELSTAT) announces data on the evolution of turnover of enterprises in the Accommodation and Food and Beverage Service Activities divisions, per Regional Unit, incorporating the most recent data on turnover from Administrative Sources for **January 2024**.

Starting from the current publication, an updated framework for the determination of enterprises classified in Accommodation and Food and Beverage Service Activities divisions is used, which occurs from the linking at micro-data level of administrative transactions files of the reference years 2019 to 2024, administrative registers of enterprises, of the reference years 2022 and 2023 and of the final Statistical Business Register, of the reference year 2021, that provides a standardized set of data, harmonized with European classifications.

For the enterprises in **Accommodation Activities** (division 55 of NACE Rev.2 classification), **obliged to double-entry bookkeeping**, for which data are available on a monthly basis, the turnover in January 2024 amounted to 94,097,348 euro, recording an increase of 11.9% in comparison with January 2023, when the respective turnover was 84,061,799 euro (Graph1, Table 2).

For the enterprises in **Food and Beverage Service Activities** (division 56 of NACE Rev.2 classification), **obliged to double-entry bookkeeping**, for which data are available on a monthly basis, the turnover in January 2024 amounted to 176,829,556 euro, recording an increase of 10.4% in comparison with January 2023, when the respective turnover was 160,125,978 euro (Graph1, Table 2).

Graph 1: Evolution of Monthly Turnover (in thousand €) of enterprises obliged to double-entry bookkeeping in the Accommodation and Food and Beverage Service Activities



Information on methodological issues:

Business Statistics Division
Registers and Big Enterprises Section
Head of Section: Adamantia Georgostathi
Tel.: +30 213 135 2043
e-mail: a.georgostathi@statistics.gr

Information on data provision:

Tel.: +30 213 135 2022, 2308, 2310
E-mail: data.dissem@statistics.gr

In total, for the enterprises in the **Accommodation and Food and Beverage Service Activities** (divisions 55 and 56 of NACE Rev. 2 classification), **obliged to double-entry bookkeeping**, for which data are available on a monthly basis, the turnover in January 2024 amounted to 270,926,904 euro, recording an increase of 11.0% in comparison with January 2023, when the respective turnover was 244,187,777 euro (Table 3). For the Regional Units with a contribution to the total turnover of the year 2023 greater than 1.0% (Table 1), the biggest increase in the turnover of January 2024 compared with January 2023 was recorded in the Regional Unit Zakynthos (66.4%) and the smallest increase (6.5%) was recorded in the Region Attiki (Table 3).

Table 1: Annual turnover of enterprises in total, in the Accommodation and Food and Beverage Service Activities (divisions 55 and 56 of NACE Rev. 2 classification), per Region and Regional Unit, 2023

REGION	REGIONAL UNIT	ACCOMMODATION AND FOOD AND BEVERAGE SERVICE ACTIVITIES (AGGREGATED DATA)		
		NUMBER OF ENTERPRISES	TURNOVER 2023 (in €)	SHARE (%) IN THE TOTAL TURNOVER
ANATOLIKI MAKEDONIA, THRAKI	RODOPI	707	49,187,694	0.2
	DRAMA	659	46,252,236	0.2
	EVROS	1,120	92,322,493	0.5
	THASSOS	1,138	115,302,024	0.6
	KAVALA	1,115	117,458,722	0.6
	XANTHI	669	49,737,382	0.2
KENTRIKI MAKEDONIA	THESSALONIKI	5,934	1,401,371,582	7.0
	IMATHIA	957	76,857,436	0.4
	KILKIS	542	26,195,191	0.1
	PELLA	1,169	65,778,453	0.3
	PIERIA	2,113	183,726,076	0.9
	SERRES	1,297	65,348,312	0.3
	CHALKIDIKI	3,503	462,957,552	2.3
DYTIKI MAKEDONIA	KOZANI	1,103	76,831,435	0.4
	GREVENA	345	13,632,616	0.1
	KASTORIA	424	27,236,744	0.1
	FLORINA	499	23,076,204	0.1
IPEIROS	IOANNINA	1,705	171,444,583	0.9
	ARTA	628	27,901,311	0.1
	THESPROTIA	769	59,751,646	0.3
	PREVEZA	1,294	109,619,439	0.5
THESSALIA	LARISSA	1,962	154,265,981	0.8
	KARDITSA	910	41,198,906	0.2
	MAGNISSIA	1,980	162,034,010	0.8
	SPORADES	1,068	140,206,240	0.7
	TRIKALA	1,171	85,640,039	0.4
STEREA ELLADA	FTHIOTIDA	1,256	85,153,190	0.4
	VIOTIA	903	63,237,614	0.3
	EVIA	2,514	187,712,175	0.9
	EVRYTANIA	267	11,279,878	0.1
	FOKIDA	510	37,818,399	0.2
IONIA NISIA	KERKYRA	4,050	699,176,039	3.5
	ZAKYNTHOS	1,794	414,878,375	2.1
	ITHAKI	164	9,431,838	0.0
	KEFALLINIA	1,291	168,407,596	0.8
	LEFKADA	1,411	110,777,762	0.6
DYTIKI ELLADA	ACHAIA	2,190	212,858,747	1.1
	ETOLOAKARNANIA	1,936	122,288,739	0.6
	ILIA	1,407	96,106,533	0.5

Table 1: Annual turnover of enterprises in total, in the Accommodation and Food and Beverage Service Activities (divisions 55 and 56 of NACE Rev. 2 classification), per Region and Regional Unit, 2023 (continued)

REGION	REGIONAL UNIT	ACCOMMODATION AND FOOD AND BEVERAGE SERVICE ACTIVITIES (AGGREGATED DATA)		
		NUMBER OF ENTERPRISES	TURNOVER 2023 (in €)	SHARE (%) IN THE TOTAL TURNOVER
PELOPONNISOS	ARKADIA	947	62,737,684	0.3
	ARGOLIDA	1,218	144,932,847	0.7
	KORINTHIA	1,348	175,342,558	0.9
	LAKONIA	1,177	102,917,889	0.5
	MESSINIA	2,086	199,973,473	1.0
ATTIKI	ATTIKI (*)	20,513	6,497,408,409	32.5
VOREIO AIGAIO	LESVOS	1,199	102,671,375	0.5
	IKARIA	324	10,505,168	0.1
	LIMNOS	289	25,749,590	0.1
	SAMOS	773	98,649,964	0.5
	CHIOS	568	59,652,101	0.3
NOTIO AIGAIO	SYROS	398	50,787,381	0.3
	ANDROS	263	21,967,956	0.1
	THIRA	2,041	743,833,935	3.7
	KALYMNOS	817	58,108,567	0.3
	KARPATOS	428	48,855,900	0.2
	KEA-KYTHNOS	259	20,115,362	0.1
	KOS	1,093	481,213,745	2.4
	MILOS	831	99,209,916	0.5
	MYKONOS	811	504,268,142	2.5
	NAXOS	1,157	141,971,665	0.7
	PAROS	983	169,166,624	0.8
	RODOS	2,796	1,306,995,708	6.5
	TINOS	372	34,120,169	0.2
KRITI	IRAKLIO	3,575	1,116,700,607	5.6
	LASSITHI	1,394	406,773,116	2.0
	RETHYMNO	1,719	468,986,123	2.3
	CHANIA	3,332	754,290,002	3.8
Total		107,185	19,972,367,168	

(*) Attiki corresponds to the Region and includes all Regional Units that are part of it.

Note:

The Regional Units with a contribution to the total turnover of the year 2023 greater than 1.0% are highlighted in bold.

Table 2: Turnover of enterprises, obliged to double-entry bookkeeping, in total, in the Accommodation and Food and Beverage Service Activities (divisions 55 and 56 of NACE Rev. 2 classification), in Accommodation Activities (division 55 of NACE Rev. 2 classification) and in Food and Beverage Service Activities (division 56 of NACE Rev. 2 classification)

ECONOMIC ACTIVITY		TURNOVER (in €)				RATE OF CHANGE (%)	
Division NACE Rev.2	Description	December 2022	January 2023	December 2023	January 2024	December 2023/2022	January 2024/2023
55 and 56	Accommodation and Food and Beverage Service Activities (aggregated data)	397,245,726	244,187,777	443,268,800	270,926,904	11.6	11.0
55	Accommodation	187,441,958	84,061,799	219,955,025	94,097,348	17.3	11.9
56	Food and Beverage Service Activities	209,803,768	160,125,978	223,313,775	176,829,556	6.4	10.4

Table 3: Turnover of enterprises, obliged to double-entry bookkeeping, in total, in the Accommodation and Food and Beverage Service Activities (divisions 55 and 56 of NACE Rev. 2 classification), per Region and Regional Unit

REGION	REGIONAL UNIT	TURNOVER (in €)				RATE OF CHANGE (%)	
		December 2022	January 2023	December 2023	January 2024	December 2023/2022	January 2024/2023
ANATOLIKI MAKEDONIA THRAKI	RODOPI	557,680	458,817	649,605	<u>700,102</u>	16.5	<u>52.6</u>
	DRAMA	576,165	374,968	702,784	<u>524,427</u>	22.0	<u>39.9</u>
	EVROS	1,040,434	817,335	1,171,363	**	12.6	**
	THASSOS	**	82,485	295,523	**	**	**
	KAVALA	1,178,216	828,092	1,213,551	851,056	3.0	2.8
	XANTHI	507,036	424,087	528,647	361,631	4.3	-14.7
KENTRIKI MAKEDONIA	THESSALONIKI	43,740,923	25,315,959	**	<u>29,887,475</u>	**	<u>18.1</u>
	IMATHIA	1,881,632	445,726	2,871,055	487,582	52.6	9.4
	KILKIS	358,151	171,205	632,819	237,635	76.7	38.8
	PELLA	1,119,975	984,319	1,469,225	1,133,849	31.2	15.2
	PIERIA	2,556,325	1,549,323	2,468,503	1,520,924	-3.4	-1.8
	SERRES	887,700	786,617	1,125,787	846,732	26.8	7.6
DYTIKI MAKEDONIA	CHALKIDIKI	2,389,319	1,249,702	1,949,605	<u>1,258,121</u>	-18.4	<u>0.7</u>
	KOZANI	**	836,387	998,417	683,245	**	-18.3
	GREVENA	54,387	65,380	76,574	72,677	40.8	11.2
	KASTORIA	501,123	385,270	547,433	431,063	9.2	11.9
IPEIROS	FLORINA	**	**	264,849	210,963	**	**
	IOANNINA	4,391,393	3,388,634	5,345,449	<u>4,316,638</u>	21.7	<u>27.4</u>
	ARTA	212,036	134,898	249,706	153,133	17.8	13.5
	THESPROTIA	**	135,324	196,572	228,517	**	68.9
THESSALIA	PREVEZA	306,404	292,022	394,510	275,392	28.8	-5.7
	LARISSA	2,579,030	2,013,123	2,919,174	2,057,099	13.2	2.2
	KARDITSA	838,176	625,358	831,378	679,028	-0.8	8.6
	MAGNISSIA	3,498,339	2,724,410	2,917,223	2,161,726	-16.6	-20.7
	SPORADES	**	233,385	**	221,674	**	-5.0
STEREA ELLADA	TRIKALA	1,639,118	1,018,104	1,618,062	923,024	-1.3	-9.3
	FTHIOTIDA	415,808	382,248	670,108	410,760	61.2	7.5
	VIOTIA	644,515	**	580,871	371,723	-9.9	**
	EVIA	2,992,403	**	3,529,567	1,892,510	18.0	**
	EVRYTANIA	304,806	265,153	307,318	267,809	0.8	1.0
	FOKIDA	255,557	**	343,669	186,333	34.5	**

Table 3: Turnover of enterprises, obliged to double-entry bookkeeping, in total, in the Accommodation and Food and Beverage Service Activities (divisions 55 and 56 of NACE Rev. 2 classification), per Region and Regional Unit (continued)

REGION	REGIONAL UNIT	TURNOVER (in €)				RATE OF CHANGE (%)	
		December 2022	January 2023	December 2023	January 2024	December 2023/2022	January 2024/2023
IONIA NISIA	KERKYRA	3,358,583	1,283,917	**	1,561,548	**	21.6
	ZAKYNTHOS	2,771,236	258,136	**	429,643	**	66.4
	ITHAKI	***	***	**	***	***	***
	KEFALLINIA	**	377,623	514,465	**	**	**
	LEFKADA	181,070	48,974	241,058	63,329	33.1	29.3
DYTIKI ELLADA	ACHAIA	3,462,159	2,489,692	3,258,102	<u>2,790,056</u>	-5.9	<u>12.1</u>
	ETOLOAKARNANIA	**	2,009,763	3,028,872	<u>2,182,577</u>	**	<u>8.6</u>
	ILIA	**	419,320	1,056,119	579,474	**	38.2
PELOPONNISOS	ARKADIA	232,269	165,112	269,176	183,220	15.9	11.0
	ARGOLIDA	1,702,491	777,049	1,569,501	<u>939,345</u>	-7.8	<u>20.9</u>
	KORINTHIA	**	1,540,056	3,816,064	1,473,081	**	-4.3
	LAKONIA	332,321	239,132	418,748	258,413	26.0	8.1
	MESSINIA	1,588,273	1,233,908	1,978,255	**	24.6	**
ATTIKI	ATTIKI (*)	234,474,965	165,376,275	241,320,948	176,053,354	2.9	6.5
VOREIO AIGAIO	LESVOS	1,192,092	1,346,831	**	1,477,016	**	9.7
	IKARIA	8,738	***	10,191	5,964	16.6	***
	LIMNOS	**	137,764	417,431	137,885	**	0.1
	SAMOS	**	327,666	922,705	344,084	**	5.0
	CHIOS	152,981	**	168,718	112,875	10.3	**
NOTIO AIGAIO	SYROS	260,487	151,555	311,776	147,506	19.7	-2.7
	ANDROS	91,762	67,763	46,633	16,416	-49.2	-75.8
	THIRA	7,014,025	**	<u>11,392,234</u>	<u>2,086,237</u>	<u>62.4</u>	**
	KALYMNOS	153,843	33,535	403,030	**	162.0	**
	KARPATOS	**	142,479	326,411	200,334	**	40.6
	KEA-KYTHNOS	33,870	22,156	65,972	30,351	94.8	37.0
	KOS	2,433,944	533,618	**	874,159	**	63.8
	MILOS	137,249	43,909	132,746	**	-3.3	**
	MYKONOS	2,124,184	1,032,365	3,333,383	1,227,075	56.9	18.9
	NAXOS	**	**	212,330	41,287	**	**
	PAROS	470,198	123,208	**	191,374	**	55.3
	RODOS	10,736,391	2,644,708	11,118,424	3,810,337	3.6	44.1
	TINOS	101,554	49,896	67,124	49,661	-33.9	-0.5
KRITI	IRAKLIO	**	3,910,807	11,948,911	<u>5,821,868</u>	**	<u>48.9</u>
	LASSITHI	5,620,612	759,332	7,843,097	**	39.5	**
	RETHYMNO	6,258,642	2,023,068	**	2,511,006	**	24.1
	CHANIA	8,647,053	3,728,617	10,598,384	<u>5,701,901</u>	22.6	<u>52.9</u>
Total		397,245,726	244,187,777	443,268,800	270,926,904	11.6	11.0

* Attiki corresponds to the Region and includes all Regional Units that are part of it.

** Extraordinary transactions were recorded in the data. Therefore, they are not published as they are not comparable.

*** The data are not disclosed for statistical confidentiality reasons regarding the protection of the identity of the reporting enterprises.

(Single underline): The turnover of enterprises that changed the frequency of data submission to the tax authorities from quarterly to monthly basis is included.

Note:

Enterprises with single-entry accounting bookkeeping are obliged to submit data to tax authorities on a quarterly basis while enterprises with double-entry accounting bookkeeping are obliged to submit data on a monthly basis. Therefore, for the total of enterprises data are available only on a quarterly basis.

Generally The statistical data presented in this announcement have been compiled on the basis of the linking and processing of primary data from the following sources:

- The final Statistical Business Register of ELSTAT of the reference year 2021.
- Administrative registers of enterprises, of the reference years 2022 and 2023.
- Administrative transactions files (tax, etc) of the reference years 2019 to 2024.

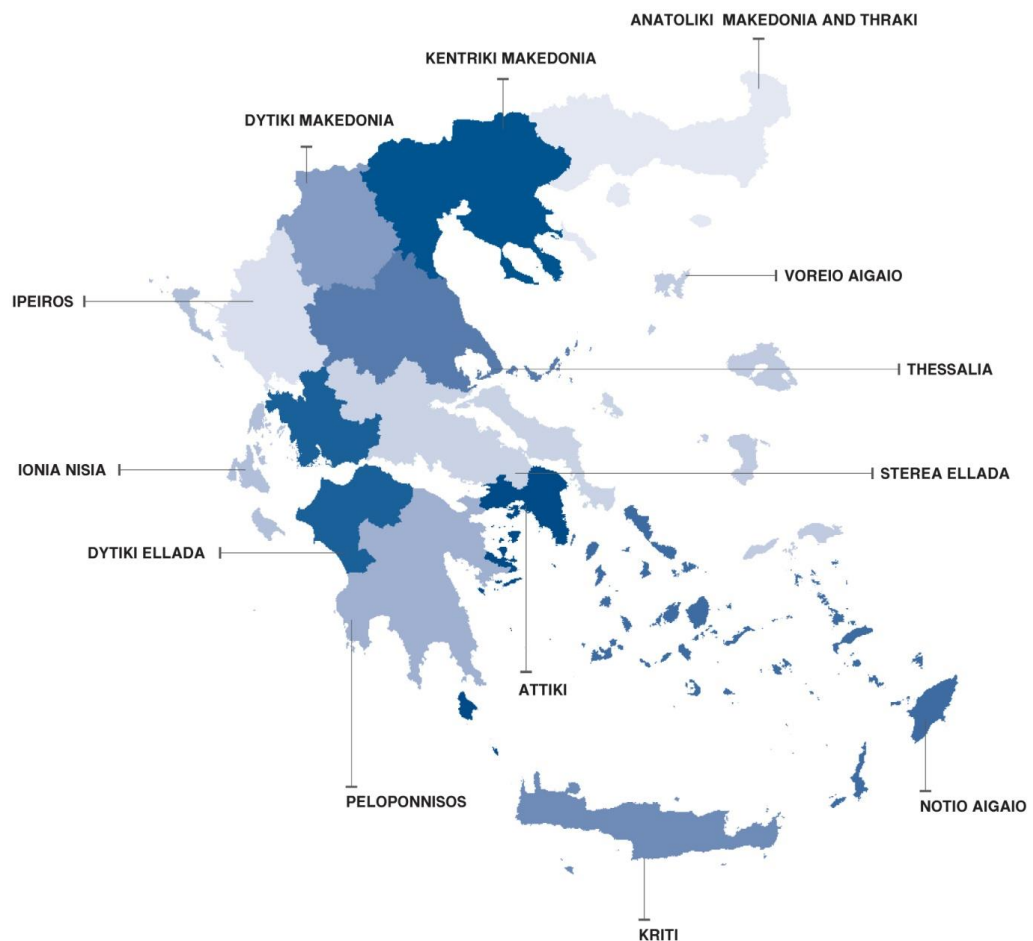
In particular the following primary data have been used per source:

- Active enterprises and the economic activity class from the final Statistical Business Register of the reference year 2021.
- The economic activity class for the enterprises that started their activity after the reference year 2021 and have a significant turnover, from administrative registers of enterprises of the reference years 2022 and 2023.
- Income data from administrative transaction files of the years 2019 to 2024.

It is noted that the geographical classification of enterprises is based on the location of the enterprise's headquarters.

Statistical classifications For the economic activities the European statistical classification of economic activities [NACE Rev.2](#) is used.

Map of the 13 Regions (NUTS 2) of Greece



Reference Period January 2024.

Statistical unit The statistical unit is the legal unit (distinct Tax Identification Numbers (TIN)).

Comparability The announced statistical data are comparable with the data of the final Statistical Business Register of ELSTAT of the reference year 2021 (relevant link from the webpage of ELSTAT where tables and information on the methodology applied are provided [Statistical Business Register](#)).

References The updated time series with the evolution of turnover for the period January 2019 - December 2023 (on a monthly and quarterly level) will be disseminated on ELSTAT's website (www.statistics.gr), on 22 March 2024.