

Piraeus, November 28, 2022

## **PRESS RELEASE**

### **Building Activity Survey: August 2022**

The Hellenic Statistical Authority (ELSTAT) announces the final data, for the month August 2022, of the Building Activity Survey. More specifically:

The Total Building Activity (private-public) in Greece, in August 2022 which is calculated on the basis of the number of issued building permits, amounted to 1,685. This figure corresponds to 439,626 m<sup>2</sup> of surface and 1,835,466 m<sup>3</sup> of volume, reflecting, respectively, a 12.6% increase in the number of building permits, a 0.6% increase in surface and a 13.8% decrease in volume, compared with the corresponding month of 2021 (Table 1).

The building permits for the Private Building Activity issued in Greece in August 2022 amounted to 1,667. This figure corresponds to 425,514 m<sup>2</sup> of surface and 1,772,711 m<sup>3</sup> of volume. In comparison with the same month of 2021 there is an 11.7% increase in the number of building permits, a 2.4% decrease in surface and a 16.5% decrease in volume (Table 2).

The building permits for the Public Building Activity issued in Greece in August 2022 amounted to 18. This figure corresponds to 14,112 m<sup>2</sup> of surface and 62,755 m<sup>3</sup> of volume. Public Building Activity accounted for a 3.4% of the total building volume in August 2022.

In the last twelve months, from September 2021 until August 2022, Total Building Activity (private-public) in Greece, calculated on the basis of the number of issued building permits, amounted to 24,256. This figure corresponds to 5,586,425 m<sup>2</sup> of surface and 24,921,594 m<sup>3</sup> of volume. In comparison with the corresponding period from September 2020 until August 2021, there is an 8.2% increase in the number of building permits, a 0.7% increase in surface and an 8.5% increase in volume (Table 3).

In the same period, from September 2021 until August 2022, Private Building Activity in Greece recorded an 8.2% increase in the number of issued building permits, a 0.7% increase in surface and a 9.6% increase in volume, compared with the corresponding period from September 2020 to August 2021 (Table 4). During the same period, Public Building Activity accounted for a 2.1% of the total building volume.

During the period January - August 2022, Total Building Activity (private-public) in Greece recorded a 1.9% increase in the number of issued building permits, a 12.0% decrease in surface and a 4.3% decrease in volume, compared with the corresponding period of 2021 (Table 5). During the same period, January - August 2022, Private Building Activity in Greece recorded a 1.7% increase in the number of issued building permits, a 12.9% decrease in surface and a 4.4% decrease in volume, in comparison with the period of January - August 2021 (Table 6).

**Information on methodological issues:**

Division on Business Statistics  
Section of Manufacture - Construction Indices and Industrial Products  
Head of the Section: Diamantaki Aikaterini  
Tel.: +30 213 135 2056  
E-mail: [a.diamantaki@statistics.gr](mailto:a.diamantaki@statistics.gr)

**Information on data provision:**

Tel: +30 213 135 2022, 2308, 2310  
E-mail: [data.dissem@statistics.gr](mailto:data.dissem@statistics.gr)

**Table 1. Total Building Activity, by Region (NUTS II), August 2021 and 2022\***

Region	Number of Building Permits			Surface (in m <sup>2</sup> )			Volume (in m <sup>3</sup> )		
	August		Change (%)	August		Change (%)	August		Change (%)
	2021	2022		2021	2022		2021	2022	
Anatoliki Makedonia, Thraki	83	98	18.1	24,290	52,531	116.3	135,779	262,260	93.2
Kentriki Makedonia	195	241	23.6	54,257	44,638	-17.7	347,316	181,029	-47.9
Dytiki Makedonia	22	20	-9.1	2,968	1,066	-64.1	11,061	4,302	-61.1
Thessalia	117	84	-28.2	32,851	17,821	-45.8	194,094	79,772	-58.9
Ipeiros	73	68	-6.8	16,136	17,943	11.2	71,313	74,027	3.8
Ionia Nisia	108	99	-8.3	16,696	14,497	-13.2	54,252	47,195	-13.0
Dytiki Ellada	114	111	-2.6	22,514	11,050	-50.9	134,022	41,302	-69.2
Stereia Ellada	96	117	21.9	46,643	14,215	-69.5	373,193	66,874	-82.1
Peloponnisos	127	149	17.3	23,205	20,817	-10.3	111,777	79,355	-29.0
Attiki	229	337	47.2	83,221	167,295	101.0	322,371	726,400	125.3
Voreio Aigaio	41	48	17.1	4,235	5,989	41.4	14,407	18,769	30.3
Notio Aigaio	164	172	4.9	70,081	47,304	-32.5	215,184	171,057	-20.5
Kriti	127	141	11.0	39,700	24,460	-38.4	143,921	83,124	-42.2
Greece, Total	1,496	1,685	12.6	436,797	439,626	0.6	2,128,690	1,835,466	-13.8

\*Final data for August 2022.

It should be noted that the increase or decrease in the number of the issued building permits does not imply, necessarily, an increase or decrease in underlying surface or volume. This is due to individual building permits involving big surface or volume or to building permits that do not concern surface or volume.

**Table 2. Private Building Activity, by Region (NUTS II), August 2021 and 2022\***

Region	Number of Building Permits			Surface (in m <sup>2</sup> )			Volume (in m <sup>3</sup> )		
	August		Change (%)	August		Change (%)	August		Change (%)
	2021	2022		2021	2022		2021	2022	
Anatoliki Makedonia, Thraki	83	97	16.9	24,290	49,500	103.8	135,779	247,002	81.9
Kentriki Makedonia	195	236	21.0	54,257	43,066	-20.6	347,316	173,640	-50.0
Dytiki Makedonia	22	20	-9.1	2,968	1,066	-64.1	11,061	4,302	-61.1
Thessalia	117	84	-28.2	32,851	17,821	-45.8	194,094	79,772	-58.9
Ipeiros	73	68	-6.8	16,136	17,943	11.2	71,313	74,027	3.8
Ionia Nisia	108	98	-9.3	16,696	14,497	-13.2	54,252	47,195	-13.0
Dytiki Ellada	113	109	-3.5	22,514	11,009	-51.1	134,022	41,151	-69.3
Stereia Ellada	96	116	20.8	46,643	14,084	-69.8	373,193	66,278	-82.2
Peloponnisos	126	145	15.1	22,221	20,703	-6.8	107,271	78,887	-26.5
Attiki	229	334	45.9	83,221	158,072	89.9	322,371	687,507	113.3
Voreio Aigaio	41	48	17.1	4,235	5,989	41.4	14,407	18,769	30.3
Notio Aigaio	163	172	5.5	70,081	47,304	-32.5	215,184	171,057	-20.5
Kriti	127	140	10.2	39,700	24,460	-38.4	143,921	83,124	-42.2
Greece, Total	1,493	1,667	11.7	435,813	425,514	-2.4	2,124,184	1,772,711	-16.5

\*Final data for August 2022.

It should be noted that the increase or decrease in the number of the issued building permits does not imply, necessarily, an increase or decrease in underlying surface or volume. This is due to individual building permits involving big surface or volume or to building permits that do not concern surface or volume.

**Table 3. Total Building Activity, by Region (NUTS II), September 2020 - August 2021 and September 2021 - August 2022\***

Region	Number of Building Permits			Surface (in m <sup>2</sup> )			Volume (in m <sup>3</sup> )		
	September - August		Change (%)	September - August		Change (%)	September - August		Change (%)
	2020-2021	2021-2022		2020-2021	2021-2022		2020-2021	2021-2022	
Anatoliki Makedonia, Thraki	1,214	1,274	4.9	319,356	366,776	14.8	1,437,940	1,875,432	30.4
Kentriki Makedonia	2,929	3,363	14.8	723,314	846,862	17.1	3,330,359	4,159,251	24.9
Dytiki Makedonia	279	333	19.4	74,114	68,422	-7.7	317,695	329,236	3.6
Thessalia	1,423	1,579	11.0	354,343	391,649	10.5	1,791,224	1,800,837	0.5
Ipeiros	861	861	0.0	285,987	217,779	-23.9	1,230,507	946,119	-23.1
Ionia Nisia	1,460	1,477	1.2	350,529	255,717	-27.0	1,189,016	897,693	-24.5
Dytiki Ellada	1,609	1,501	-6.7	278,921	216,436	-22.4	1,131,877	831,785	-26.5
Stereia Ellada	1,360	1,360	0.0	309,740	241,889	-21.9	1,842,237	1,350,833	-26.7
Peloponnisos	1,808	1,987	9.9	367,745	314,590	-14.5	1,668,752	1,344,912	-19.4
Attiki	4,929	5,632	14.3	1,514,808	1,659,502	9.6	5,589,489	7,581,645	35.6
Voreio Aigaio	546	591	8.2	82,243	84,775	3.1	304,648	306,911	0.7
Notio Aigaio	2,074	2,389	15.2	416,378	486,957	17.0	1,378,281	1,673,585	21.4
Kriti	1,927	1,909	-0.9	470,762	435,071	-7.6	1,751,216	1,823,355	4.1
Greece, Total	22,419	24,256	8.2	5,548,240	5,586,425	0.7	22,963,241	24,921,594	8.5

\*Final data for August 2022.

It should be noted that the increase or decrease in the number of the issued building permits does not imply, necessarily, an increase or decrease in underlying surface or volume. This is due to individual building permits involving big surface or volume or to building permits that do not concern surface or volume.

**Table 4. Private Building Activity, by Region (NUTS II), September 2020 - August 2021 and September 2021 - August 2022\***

Region	Number of Building Permits			Surface (in m <sup>2</sup> )			Volume (in m <sup>3</sup> )		
	September - August		Change (%)	September - August		Change (%)	September - August		Change (%)
	2020-2021	2021-2022		2020-2021	2021-2022		2020-2021	2021-2022	
Anatoliki Makedonia, Thraki	1,201	1,263	5.2	297,666	335,458	12.7	1,253,499	1,709,398	36.4
Kentriki Makedonia	2,910	3,328	14.4	719,895	835,360	16.0	3,317,765	4,103,693	23.7
Dytiki Makedonia	272	326	19.9	64,633	67,354	4.2	282,620	325,339	15.1
Thessalia	1,412	1,576	11.6	351,728	389,880	10.8	1,761,463	1,793,470	1.8
Ipeiros	851	854	0.4	278,229	216,872	-22.1	1,188,648	942,200	-20.7
Ionia Nisia	1,459	1,470	0.8	344,882	255,717	-25.9	1,173,137	897,693	-23.5
Dytiki Ellada	1,597	1,489	-6.8	275,245	216,196	-21.5	1,114,039	830,768	-25.4
Stereia Ellada	1,350	1,352	0.1	309,035	239,945	-22.4	1,838,930	1,335,609	-27.4
Peloponnisos	1,790	1,969	10.0	338,298	309,704	-8.5	1,415,347	1,322,507	-6.6
Attiki	4,889	5,580	14.1	1,507,641	1,614,660	7.1	5,556,891	7,397,085	33.1
Voreio Aigaio	543	589	8.5	81,908	83,887	2.4	300,267	302,964	0.9
Notio Aigaio	2,066	2,386	15.5	415,963	486,957	17.1	1,376,689	1,673,585	21.6
Kriti	1,901	1,885	-0.8	449,474	420,873	-6.4	1,666,314	1,756,925	5.4
Greece, Total	22,241	24,067	8.2	5,434,597	5,472,863	0.7	22,245,609	24,391,236	9.6

\*Final data for August 2022.

It should be noted that the increase or decrease in the number of the issued building permits does not imply, necessarily, an increase or decrease in underlying surface or volume. This is due to individual building permits involving big surface or volume or to building permits that do not concern surface or volume.

**Table 5. Total Building Activity, by Region (NUTS II), January - August 2021 and 2022\***

Region	Number of Building Permits			Surface (in m <sup>2</sup> )			Volume (in m <sup>3</sup> )		
	January-August		Change (%)	January-August		Change (%)	January-August		Change (%)
	2021	2022		2021	2022		2021	2022	
Anatoliki Makedonia, Thraki	870	826	-5.1	240,002	259,179	8.0	1,076,138	1,350,074	25.5
Kentriki Makedonia	2,045	2,141	4.7	528,600	525,924	-0.5	2,465,410	2,512,440	1.9
Dytiki Makedonia	184	222	20.7	51,486	27,816	-46.0	227,172	126,686	-44.2
Thessalia	963	997	3.5	228,464	231,918	1.5	1,142,221	1,059,976	-7.2
Ipeiros	609	554	-9.0	199,388	126,246	-36.7	853,514	536,104	-37.2
Ionia Nisia	1,009	946	-6.2	214,421	132,909	-38.0	721,309	448,307	-37.8
Dytiki Ellada	1,113	947	-14.9	193,057	118,464	-38.6	791,212	461,753	-41.6
Stereia Ellada	943	872	-7.5	225,505	161,097	-28.6	1,371,546	990,375	-27.8
Peloponnisos	1,244	1,314	5.6	274,634	200,378	-27.0	1,338,040	855,524	-36.1
Attiki	3,360	3,665	9.1	1,084,542	1,060,605	-2.2	3,893,794	5,085,251	30.6
Voreio Aigaio	398	395	-0.8	56,638	51,771	-8.6	219,196	177,518	-19.0
Notio Aigaio	1,356	1,575	16.2	300,047	305,840	1.9	987,557	1,049,831	6.3
Kriti	1,300	1,226	-5.7	321,170	246,927	-23.1	1,235,234	963,046	-22.0
<b>Greece, Total</b>	<b>15,394</b>	<b>15,680</b>	<b>1.9</b>	<b>3,917,954</b>	<b>3,449,074</b>	<b>-12.0</b>	<b>16,322,343</b>	<b>15,616,885</b>	<b>-4.3</b>

\*Final data for August 2022.

It should be noted that the increase or decrease in the number of the issued building permits does not imply, necessarily, an increase or decrease in underlying surface or volume. This is due to individual building permits involving big surface or volume or to building permits that do not concern surface or volume.

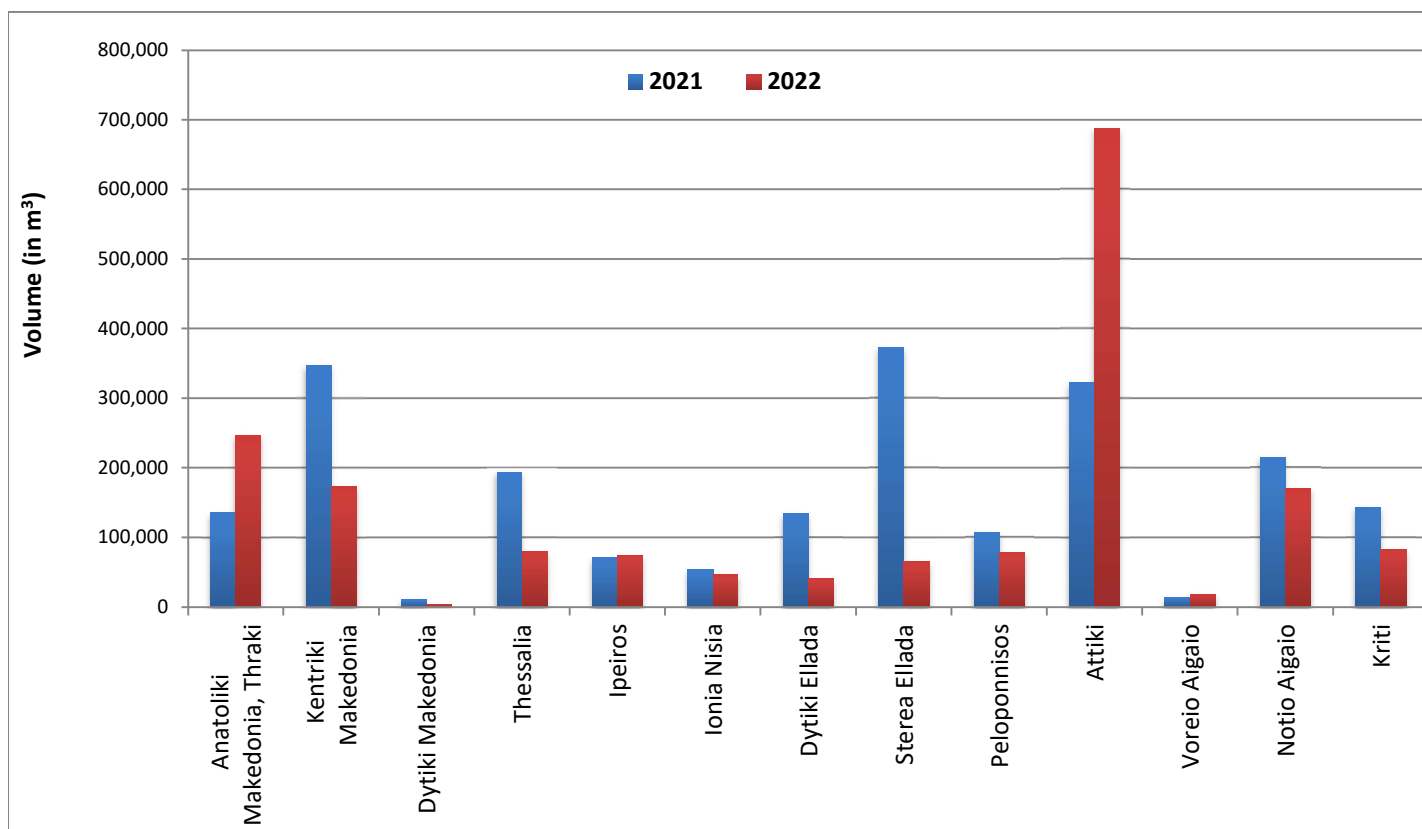
**Table 6. Private Building Activity, by Region (NUTS II), January - August 2021 and 2022\***

Region	Number of Building Permits			Surface (in m <sup>2</sup> )			Volume (in m <sup>3</sup> )		
	January-August		Change (%)	January-August		Change (%)	January-August		Change (%)
	2021	2022		2021	2022		2021	2022	
Anatoliki Makedonia, Thraki	862	815	-5.5	233,770	227,861	-2.5	1,034,274	1,184,040	14.5
Kentriki Makedonia	2,033	2,113	3.9	526,585	515,406	-2.1	2,459,441	2,460,438	0.0
Dytiki Makedonia	179	217	21.2	50,711	26,766	-47.2	223,710	122,870	-45.1
Thessalia	953	996	4.5	225,849	231,361	2.4	1,112,460	1,057,238	-5.0
Ipeiros	601	548	-8.8	192,197	125,543	-34.7	813,412	532,715	-34.5
Ionia Nisia	1,008	939	-6.8	208,774	132,909	-36.3	705,430	448,307	-36.4
Dytiki Ellada	1,104	937	-15.1	192,855	118,260	-38.7	790,566	461,096	-41.7
Stereia Ellada	935	867	-7.3	224,845	160,793	-28.5	1,368,378	988,751	-27.7
Peloponnisos	1,230	1,303	5.9	245,473	199,768	-18.6	1,085,816	853,150	-21.4
Attiki	3,335	3,624	8.7	1,080,665	1,026,740	-5.0	3,877,049	4,942,116	27.5
Voreio Aigaio	396	394	-0.5	56,582	51,771	-8.5	218,815	177,518	-18.9
Notio Aigaio	1,351	1,572	16.4	299,696	305,840	2.1	986,157	1,049,831	6.5
Kriti	1,285	1,207	-6.1	315,258	234,417	-25.6	1,207,336	907,263	-24.9
<b>Greece, Total</b>	<b>15,272</b>	<b>15,532</b>	<b>1.7</b>	<b>3,853,260</b>	<b>3,357,435</b>	<b>-12.9</b>	<b>15,882,844</b>	<b>15,185,333</b>	<b>-4.4</b>

\*Final data for August 2022.

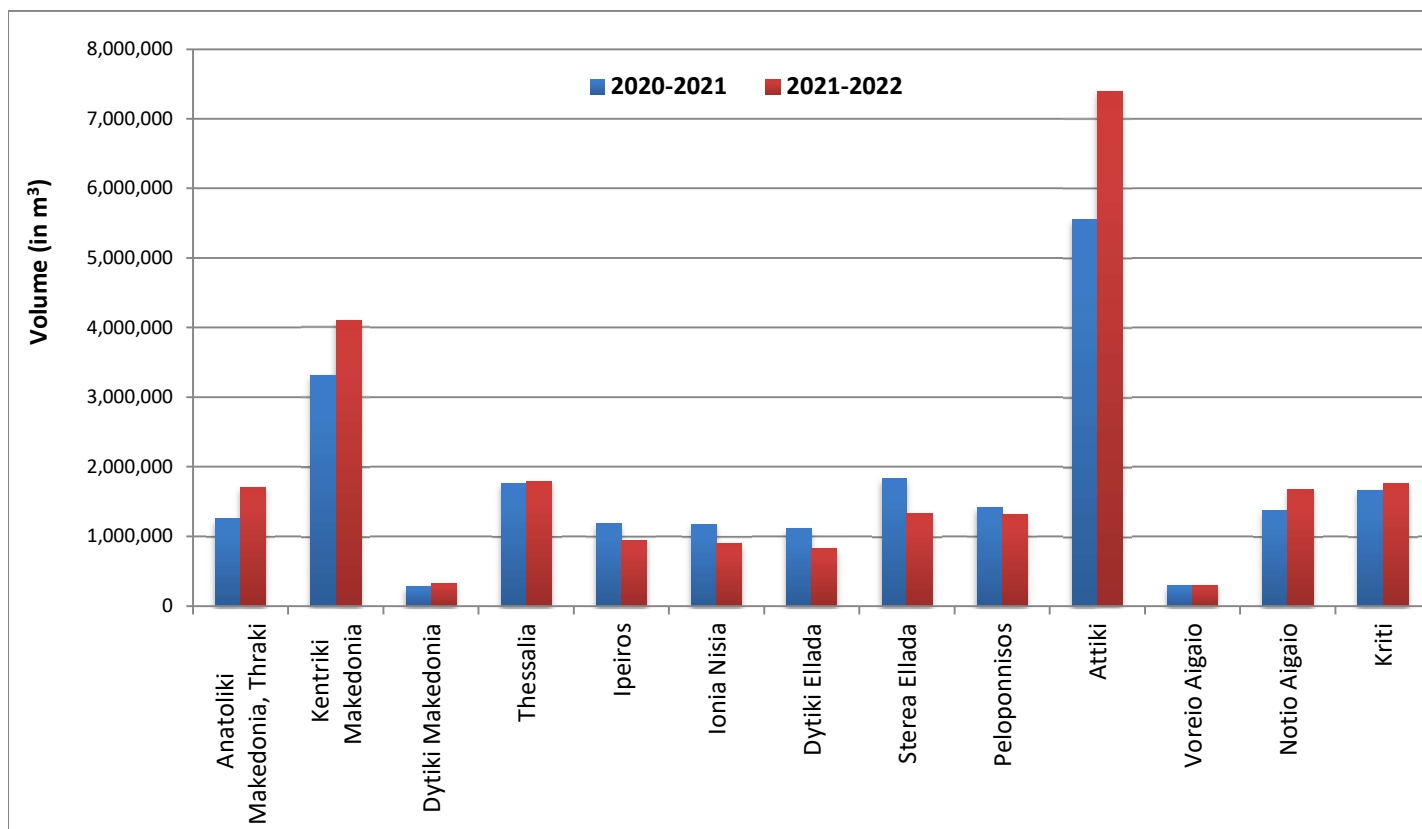
It should be noted that the increase or decrease in the number of the issued building permits does not imply, necessarily, an increase or decrease in underlying surface or volume. This is due to individual building permits involving big surface or volume or to building permits that do not concern surface or volume.

**Graph 1. Private Building Activity (volume), by Region (NUTS II), August 2021 and 2022\***



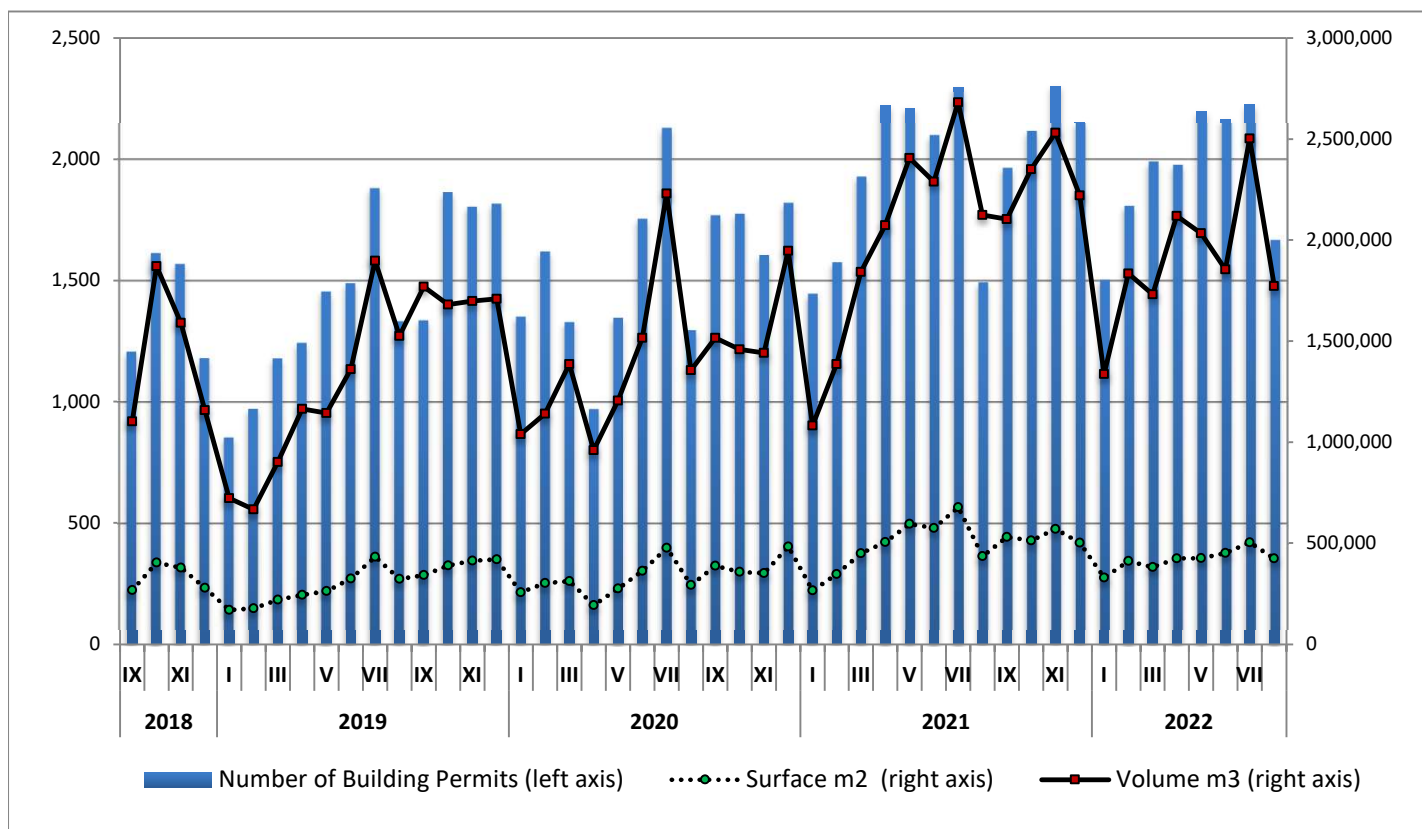
\*Final data for August 2022.

**Graph 2. Private Building Activity (volume), by Region (NUTS II), September 2020 - August 2021 and September 2021 - August 2022\***



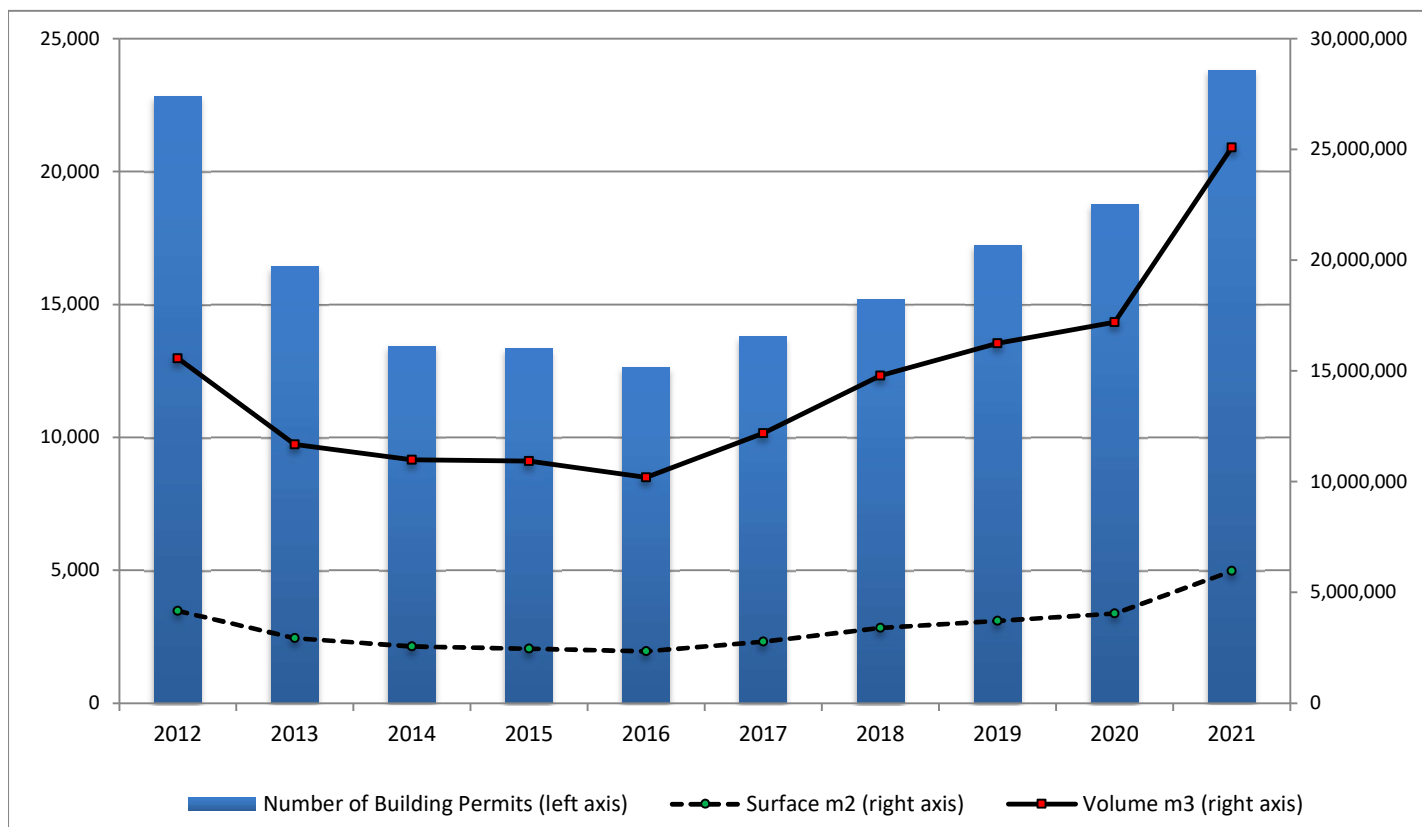
\*Final data for August 2022.

**Graph 3. Monthly Private Building Activity (September 2018 – August 2022\*)**



\*Final data for August 2022.

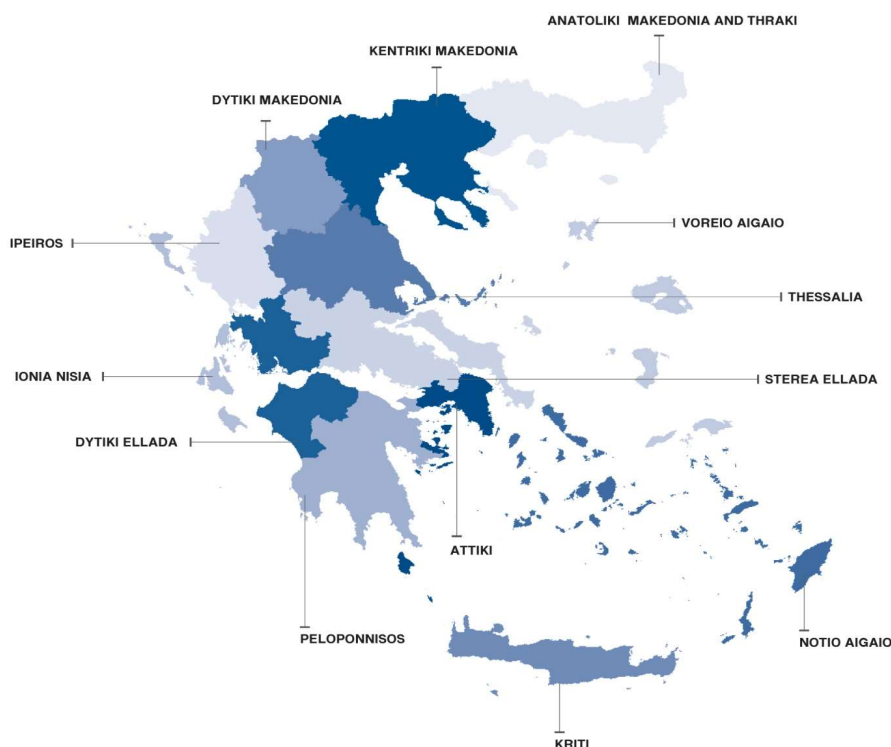
**Graph 4. Annual Private Building Activity (2012 – 2021)**



## EXPLANATORY NOTE

<b>Building Activity Survey</b>	The Building Activity Survey has been providing data on a monthly and yearly basis, since 1964. The purpose of this survey is to register the total number of building permits issued by the responsible administrative authorities, which are devolved to complete the questionnaire. The survey covers all the features of building activity, such as the type of building permit, the type of construction, the type and the characteristics of the building and its auxiliary spaces, as well as building usage, surface, volume and value.
<b>Legal Framework</b>	The survey is fully harmonized with the European legislation. The primary legislative act is Regulation (EC) 1165/1998, as it was amended according to Regulation (EC) 1158/2005 and Regulation (EU) No 2019/2152 of the European Parliament and of the Council on European business statistics, as well as Commission Implementing Regulation (EU) No 2020/1197 laying down specifications and arrangements pursuant to Regulation (EU) No 2019/2152.
<b>Reference Period</b>	August 1, 2022 to August 31, 2022.
<b>Coverage</b>	The survey is exhaustive and covers the total number of issued building permits across the Country.
<b>Geographical classification</b>	The geographical classification is based on Nomenclature of Territorial Units for Statistics (NUTS).

Map of the 13 Regions (NUTS 2) of Greece



<b>Definitions</b>	<p><b>Building Permit</b> refers to all types of building permits. These are permits for new buildings or permits for additions, repair, renovation, demolition, legitimization, amendment and modification of a building.</p> <p><b>The denotation of "built-property"</b> is equal to "building".</p> <p><b>Building</b> is every permanent and independent structure, which has walls and a roof and consists of one or more rooms and other complementary spaces. Normally, buildings feature four walls. However, a construction open from one or even two sides will be considered a building, as long as it has a roof.</p> <p><b>New building</b> is any built-property raised on an uncovered site or in the place of an old building that has been demolished.</p> <p><b>Building Addition</b> is every construction that adds building volume (space) to an existing building, in terms of surface, height or both and creates a residence, a shop or both.</p> <p><b>Building volume</b> (the gross building volume) refers to the area that is included between the external surface of the external walls, the lowest level (the basement or the sub-basement, if it exists) and the roof of the building. If there is an open ground floor not enclosed within walls between the lower floor and the roof, its volume is taken into account. The relevant authorities calculate the volume of the building during the issuing of the building permit.</p> <p><b>Surface of new-built property</b> is considered to be the sum of each floor space along with the outer space of the outer walls.</p>
<b>General Remark</b>	Any delineation that may occur between the sum of sub totals and the totals is due to rounding.
<b>References</b>	More information (tables, questionnaires, methodology) with regards to the Building Activity Survey is available on ELSTAT's web-site ( <a href="http://www.statistics.gr">www.statistics.gr</a> ), under the link: <a href="http://www.statistics.gr/en/statistics/-/publication/SOP03/-">http://www.statistics.gr/en/statistics/-/publication/SOP03/-</a>