

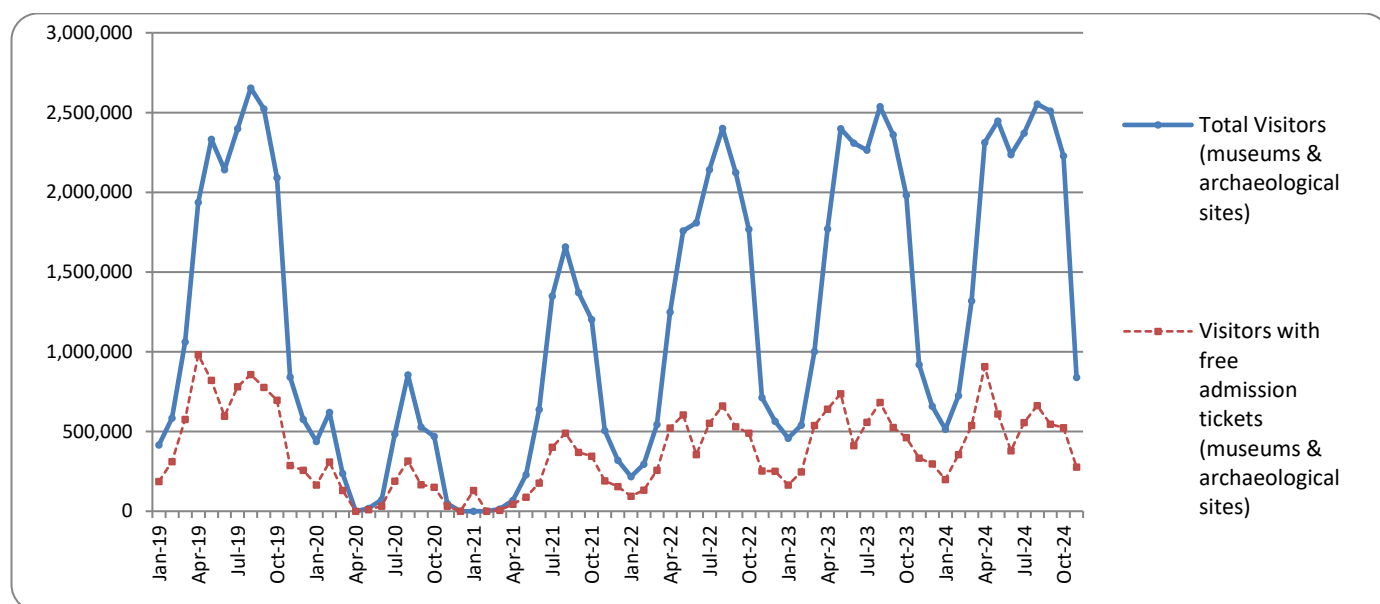


## SURVEY ON MUSEUMS AND ARCHAEOLOGICAL SITES ATTENDANCE NOVEMBER 2024

The Hellenic Statistical Authority (ELSTAT) announces the results of the *Survey on Museums and Archaeological Sites Attendance* for November 2024. More specifically:

- During November 2024 compared with the corresponding month of 2023, museums recorded a decrease of 1.9% in the number of visitors, of 5.9% in the number of free admission visitors and an increase of 43.9% in their receipts (Table 1).
- As regards archaeological sites, in November 2024 compared with the corresponding month of 2023, a decrease of 12.4% was recorded in the number of visitors, of 23.9% in the number of free admission visitors and of 6.8% in the corresponding receipts (Table 1).
- During the eleven-month period from January to November 2024, compared with the corresponding period of 2023, an increase of 15.6% was recorded in the number of visitors of museums, of 3.6% in the number of free admission visitors and of 21.6% in the relevant receipts (Table 2).
- As regards archaeological sites, during the eleven-month period from January to November 2024, compared with the corresponding period of 2023, an increase of 4.9% was recorded in the number of visitors, of 5.7% in the number of free admission visitors and of 4.7% in the relevant receipts (Table 2).

**Graph 1: Visitors of Museums and Archaeological sites (January 2019 – November 2024)**



**Information on methodological issues:**

Sectoral Statistics Division  
Tourism and Culture Statistics Section  
Head of Section: Eleni Papadopoulou  
Tel: +30 213 135 2168  
e-mail: [e.papadopoulou@statistics.gr](mailto:e.papadopoulou@statistics.gr)

**Information for data provision:**

Tel. +30 213 135 2022, 2308, 2310  
e-mail: [data.dissem@statistics.gr](mailto:data.dissem@statistics.gr)

**TABLE 1: VISITORS OF MUSEUMS AND ARCHAEOLOGICAL SITES - TOTAL RECEIPTS  
(NOVEMBER 2023 & NOVEMBER 2024)**

<b>I. NUMBER OF VISITORS</b>			
Museums and Archaeological sites	2023	2024	Change 2024/2023
<b>Total number of visitors (A+B)</b>	<b>919,890</b>	<b>839,500</b>	<b>-8.7%</b>
<b>A. Museums (C+E)</b>	<b>321,678</b>	<b>315,478</b>	<b>-1.9%</b>
Acropolis Museum	103,755	98,160	-5.4%
National Archaeological	39,706	35,011	-11.8%
Ancient Olympia <sup>(3)</sup>	4,222	8,054	90.8%
Palace of the Grand Master (Rhodes) <sup>(2)</sup>	13,212	11,038	-16.5%
Herakleion Archaeological (Crete)	11,774	9,727	-17.4%
White Tower	14,879	14,564	-2.1%
Delphi <sup>(3)</sup>	9,690	16,945	74.9%
Other museums <sup>(2)</sup>	124,440	121,979	-2.0%
<b>B. Archaeological Sites (D+F)</b>	<b>598,212</b>	<b>524,022</b>	<b>-12.4%</b>
Epidavros <sup>(1)</sup>	21,646	19,353	-10.6%
The Acropolis of Mycenae & Atreus' Treasure	21,778	21,573	-0.9%
The Acropolis of Athens	242,411	216,983	-10.5%
Sounio	23,296	19,919	-14.5%
The Acropolis of Lindos	9,769	7,558	-22.6%
Royal Tombs of Vergina	11,587	11,774	1.6%
Ancient Olympia <sup>(3)</sup>	21,985	9,464	-57.0%
Knossos (Crete)	26,369	21,957	-16.7%
Phaistos (Crete)	1,393	1,726	23.9%
Ancient Korinthos <sup>(1)</sup>	10,418	13,452	29.1%
Mystras <sup>(1)</sup>	6,411	6,590	2.8%
Delphi <sup>(3)</sup>	26,394	12,190	-53.8%
Other archaeological sites <sup>(2)</sup>	174,755	161,483	-7.6%
<b>II. VISITORS WHO PAID TICKET</b>			
	2023	2024	Change 2024/2023
<b>Total number of visitors who paid ticket (C+D)</b>	<b>587,440</b>	<b>561,426</b>	<b>-4.4%</b>
C. Museums <sup>(2)</sup>	182,687	184,663	1.1%
D. Archaeological sites <sup>(2)</sup>	404,753	376,763	-6.9%
<b>III. VISITORS WITH FREE ADMISSION TICKETS</b>			
	2023	2024	Change 2024/2023
<b>Total number of visitors with free admission ticket (E+F)</b>	<b>332,450</b>	<b>278,074</b>	<b>-16.4%</b>
E. Museums	138,991	130,815	-5.9%
F. Archaeological sites	193,459	147,259	-23.9%
<b>IV. RECEIPTS (euros)</b>			
	2023	2024	Change 2024/2023
<b>Total Receipts (G+H)</b>	<b>4,629,210</b>	<b>4,924,332</b>	<b>6.4%</b>
G. Museums	1,203,804	1,732,610	43.9%
H. Archaeological sites	3,425,406	3,191,722	-6.8%

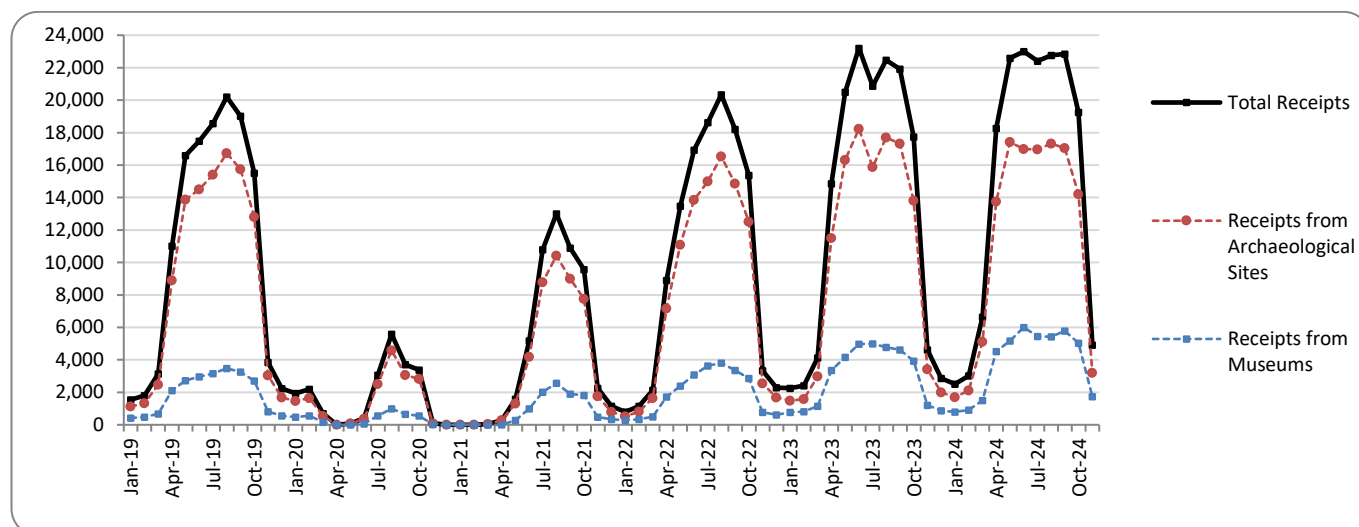
<sup>(1)</sup> Flat rate ticket, valid both for the museum and the archaeological site.

<sup>(2)</sup> Revised data for 2023, due to the transmission of updated data from administrative sources.

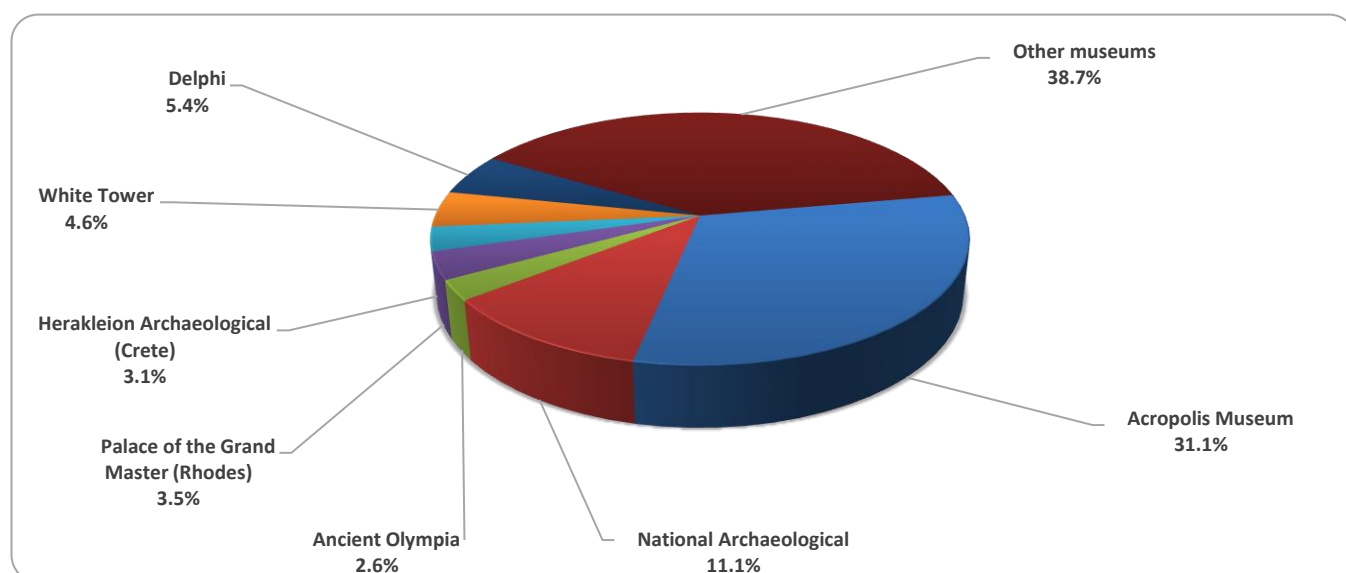
<sup>(3)</sup> Since April 2024 tickets can be purchased online from the museums of Ancient Olympia and Delphi, covering the visit both to the museum and to the corresponding archaeological site, and cannot be monitored separately.

The following graphs depict the evolution of the receipts of Museums and Archaeological Sites (Graph 2), as well as the number of visitors by Museum (Graph 3) and by Archaeological Site (Graph 4).

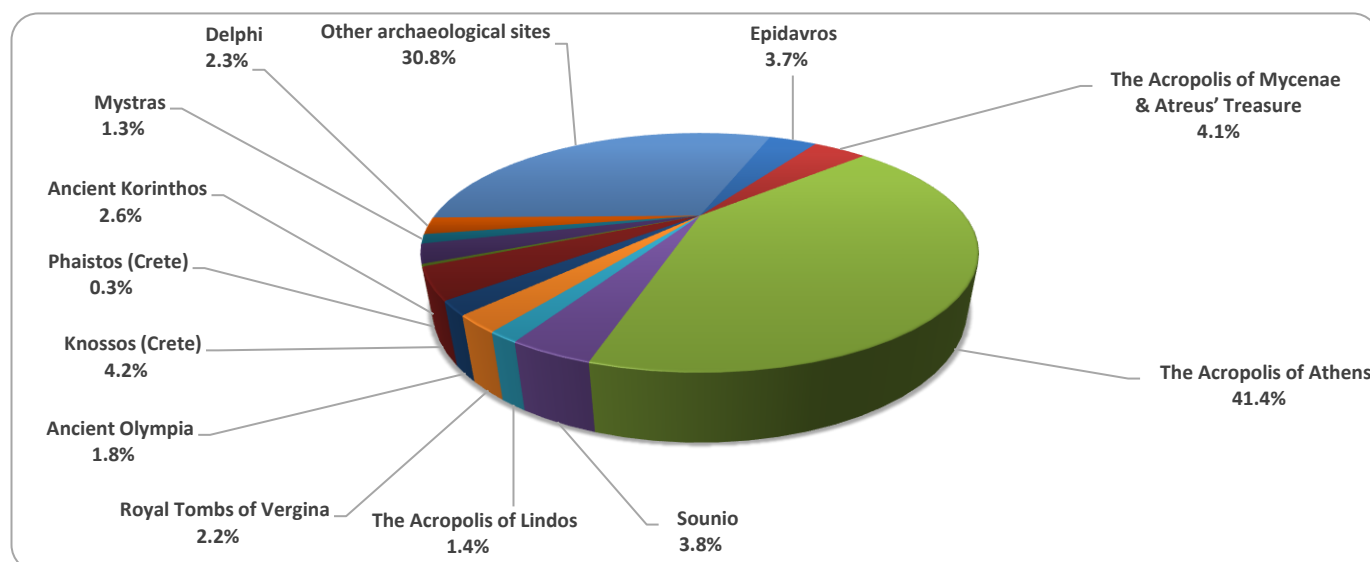
**Graph 2: Receipts from Museums and Archaeological Sites (January 2019 – November 2024)**  
(in thousand euro)



**Graph 3: Percentage distribution of visitors by Museum, November 2024**



**Graph 4: Percentage distribution of visitors by Archaeological site, November 2024**



**TABLE 2: VISITORS OF MUSEUMS AND ARCHAEOLOGICAL SITES - TOTAL RECEIPTS**  
(2022, 2023, JANUARY – NOVEMBER 2023, 2024)

<b>I. VISITORS</b>					
Museums and Archaeological sites	2022	2023	JANUARY- NOVEMBER		change
			2023	2024	2024/2023
<b>Total number of visitors (A+B)</b>	<b>15,583,552</b>	<b>19,210,752</b>	<b>18,552,320</b>	<b>20,045,474</b>	<b>8.0%</b>
<b>A. Museums (C+E)</b>	<b>4,636,901</b>	<b>5,801,812</b>	<b>5,530,819</b>	<b>6,391,151</b>	<b>15.6%</b>
Acropolis Museum	1,397,353	1,900,950	1,819,153	1,913,683	5.2%
National Archaeological	474,821	642,318	612,064	612,584	0.1%
Ancient Olympia <sup>(3)</sup>	85,179	85,410	83,959	283,682	237.9%
Palace of the Grand Master (Rhodes) <sup>(2)</sup>	263,521	342,607	337,161	365,426	8.4%
Herakleion Archaeological (Crete)	249,715	294,839	285,053	371,774	30.4%
White Tower <sup>(2)</sup>	193,916	259,775	240,331	222,024	-7.6%
Delphi <sup>(3)</sup>	151,512	203,445	194,915	430,746	121.0%
Other museums <sup>(2)</sup>	1,820,884	2,072,468	1,958,183	2,191,232	11.9%
<b>B. Archaeological Sites (D+F)</b>	<b>10,946,651</b>	<b>13,408,940</b>	<b>13,021,501</b>	<b>13,654,323</b>	<b>4.9%</b>
Epidavros <sup>(1)</sup>	393,077	525,982	513,379	535,067	4.2%
The Acropolis of Mycenae & Atreus' Treasure	372,448	510,507	496,898	532,215	7.1%
The Acropolis of Athens	3,019,841	3,958,405	3,800,621	4,390,786	15.5%
Sounio	314,506	393,927	377,795	407,068	7.7%
The Acropolis of Lindos	596,331	629,089	627,103	701,270	11.8%
Royal Tombs of Vergina	168,444	202,122	181,194	232,370	28.2%
Ancient Olympia <sup>(3)</sup>	338,365	481,211	474,799	297,796	-37.3%
Knossos (Crete)	831,320	959,110	940,966	1,001,430	6.4%
Phaistos (Crete)	74,817	79,934	79,294	83,907	5.8%
Ancient Korinthos <sup>(1)</sup>	153,616	210,465	204,995	247,609	20.8%
Mystras <sup>(1)</sup>	139,512	151,508	146,614	149,688	2.1%
Delphi <sup>(3)</sup>	332,870	482,293	463,723	284,197	-38.7%
Other archaeological sites <sup>(2)</sup>	4,211,504	4,824,387	4,714,120	4,790,920	1.6%
<b>II. VISITORS WHO PAID TICKET</b>					
	2022	2023	JANUARY- NOVEMBER		change
			2023	2024	2024/2023
<b>Total number of visitors who paid ticket (C+D)</b>	<b>10,877,516</b>	<b>13,614,885</b>	<b>13,254,622</b>	<b>14,487,860</b>	<b>9.3%</b>
C. Museums <sup>(2)</sup>	2,883,216	3,690,912	3,560,529	4,350,894	22.2%
D. Archaeological site <sup>(2)</sup>	7,994,300	9,923,973	9,694,093	10,136,966	4.6%
<b>III. VISITORS WITH FREE ADMISSION TICKETS</b>					
	2022	2023	JANUARY- NOVEMBER		change
			2023	2024	2024/2023
<b>Total number of visitors with free admission ticket (E+F)</b>	<b>4,706,036</b>	<b>5,595,867</b>	<b>5,297,698</b>	<b>5,557,614</b>	<b>4.9%</b>
E. Museums <sup>(2)</sup>	1,753,685	2,110,900	1,970,290	2,040,257	3.6%
F. Archaeological sites	2,952,351	3,484,967	3,327,408	3,517,357	5.7%
<b>IV. RECEIPTS (euros)</b>					
	2022	2023	JANUARY- NOVEMBER		change
			2023	2024	2024/2023
<b>Total Receipts (G+H)</b>	<b>121,535,113</b>	<b>157,852,657</b>	<b>155,075,377</b>	<b>168,178,388</b>	<b>8.4%</b>
G. Museums	23,361,465	35,617,601	34,837,424	42,345,278	21.6%
H. Archaeological sites	98,173,648	122,235,056	120,237,953	125,833,110	4.7%

<sup>(1)</sup> Flat rate ticket, valid both for the museum and the archaeological site.

<sup>(2)</sup> Revised data for 2023, due to the transmission of updated data from administrative sources.

<sup>(3)</sup> Since April 2024 tickets can be purchased online from the museums of Ancient Olympia and Delphi, covering the visit both to the museum and to the corresponding archaeological site, and cannot be monitored separately.

## EXPLANATORY NOTES

<b>Survey on Museums and Archaeological Sites Attendance</b>	<p>The Survey on Museums and Archaeological Sites Attendance has been producing results since 1970. The survey collects data from the Hellenic Organization of Cultural Resources Development (HOCRED), supervised by the Ministry of Culture and Sports, on the number of visitors and the receipts from the tickets sold in the Museums and Archaeological sites of the country.</p> <p>The corresponding data for the Acropolis Museum is available from December 2009 onwards.</p>
<b>Legal Framework</b>	<p>The survey is conducted since 1970 on a regular basis and it produces results on a monthly and yearly basis, in compliance with the Joint Ministerial Decision 15189/B379/73.</p>
<b>Reference Period</b>	<p>1/11/2024 - 30/11/2024</p>
<b>Methodology and Definitions</b>	<p>The survey is conducted on a monthly basis from data mainly collected from the Hellenic Organization of Cultural Resources Development (HOCRED), supervised by the Ministry of Culture and Sports, on the number of visitors and the receipts from the tickets sold in the Museums and Archaeological sites of the Country. ELSTAT tabulates and presents the data for the whole of the Country, by month and by year.</p> <p><b>Number of flat rate tickets:</b></p> <p>From April 1999 onwards, in some museums and the nearby archaeological sites, in addition to the ordinary ticket, a new “flat rate ticket” was established, which is valid for both the museum and the nearby archaeological site. The total number of these flat rate tickets for <b>November 2024</b> was <b>23,412</b></p>
<b>References</b>	<p>More information on the Survey on Museums and Archaeological Sites Attendance and detailed time series are available on: <a href="http://www.statistics.gr/en/statistics/-/publication/SCI21/-">http://www.statistics.gr/en/statistics/-/publication/SCI21/-</a></p>