

## **PRESS RELEASE**

### **ARRIVALS AND NIGHTS SPENT IN HOTELS, SIMILAR ESTABLISHMENTS AND TOURIST CAMPSITES: 2019 (final data)**

The Hellenic Statistical Authority (ELSTAT) announces the results of the Survey on Arrivals and Nights Spent in Hotels, Similar Establishments and Tourist Campsites for the reference year 2019, as well as revised results for the reference year 2018, which refer to 100% of the relevant establishments and the corresponding bed-places.

According to the survey results, for the total of these establishments, in 2019 compared with 2018, an increase of 1.3% is recorded in arrivals (Tables 1 and 4) and a decrease of 0.1% in nights spent (Tables 2 and 5).

More specifically, in 2019 compared with 2018, a 1.7% increase and a 0.2% decrease is recorded in arrivals and nights spent, respectively, by non-residents, and an increase of 0.5% and 0.2% in arrivals and nights spent by residents, respectively (Tables 1, 2, 7 and 8).

The annual occupancy rate of the bed places in hotels and similar establishments (excluding tourist campsites) amounted to 48.7% in 2019, compared with 50.6% in 2018 (Tables 3 and 6).

More specifically, according to the monthly distribution of the data, 85.6% of the arrivals and 92.3% of the nights spent, in hotels, similar establishments and tourist campsites of Greece, are recorded during the period from April to October (Tables 1 and 2, Graph 1).

As regards the breakdown of the survey data by NUTS 2 Region, an increase of arrivals is observed in arrivals and nights spent, in absolute values, in Notio Aigaio (4.2% in arrivals and 2.5% in nights spent) and Attiki (1.9% in arrivals and 0.8% in nights spent). On the contrary, a decrease is observed in Kriti (1.7% in arrivals and 3.6% in nights spent) and Peloponnisos (3.1% in arrivals and 2.7% in nights spent) (Tables 4 and 5).

In 2019, the largest share of arrivals and nights spent in hotels, similar establishments and tourist campsites, is recorded by non-residents, i.e. 72.7% of arrivals and 84.1% of nights spent (Graph 2).

**Information on methodological issues:**

Sectoral Statistics Division  
Tourism and Cultural Statistics Section  
Head of the Section: Asimina Katri  
Tel: +30 213 135 2168  
Fax: +30 210 482 2669  
e-mail: [a.katri@statistics.gr](mailto:a.katri@statistics.gr)

**Information for data provision:**

Tel. +30 213 135 2022, 2308, 2310  
e-mail: [data.dissem@statistics.gr](mailto:data.dissem@statistics.gr)

In 2019, the biggest share of arrivals and nights spent by non-residents in hotels, similar establishments and tourist campsites is recorded by customers (guests) whose country of residence is in Europe (79.8% of arrivals and 89.4% of nights spent), with a significant contribution from the EU Members States (68.1% of arrivals and 76.2% of nights spent). The largest contribution concerning arrivals is recorded for Germany (13.9% of arrivals and 18.1% of nights spent), the United Kingdom (13.8% of arrivals and 17.0% of nights spent), France (7.7% of arrivals and 6.5% of nights spent), Italy (4.7% of arrivals and 4.1% of nights spent) and Poland (3.8% of arrivals and 4.6% of nights spent). As regards the rest of the European countries, the biggest contribution is recorded for Russia (4.3% of arrivals and 5.9% of nights spent). As for the rest of the countries, the largest contribution is recorded for the United States of America (7.0% of arrivals and 3.5% of nights spent) (Tables 7 and 8).

When comparing the data of arrivals and nights spent in hotels, similar establishments and tourist campsites, by country of residence of the year 2019 with the corresponding data of the year 2018, a significant increase in arrivals, in absolute values, is recorded, among EU Members States, for the United Kingdom (4.7% in arrivals and 2.6% in nights spent) and France (3.7% in arrivals and 2.7% in nights spent), while a significant decrease is recorded for Poland (10.7% in arrivals and 10.4% in nights spent) and Sweden (8.9% in arrivals and 8.7% in nights spent). As regards the other European countries, a significant decrease in arrivals, in absolute values, is recorded for Russia (7.0% of in arrivals and 5.2% in nights spent). As for the rest of the continents, a significant increase in arrivals, in absolute values, is recorded for America, with a large contribution from the United States of America (increase of 13.6% in arrivals and 15.6% in nights spent) (Tables 7 and 8).

**Table 1. Arrivals of residents and non-residents at hotels, similar establishments and tourist campsites, by month, 2018<sup>(1)</sup> and 2019**

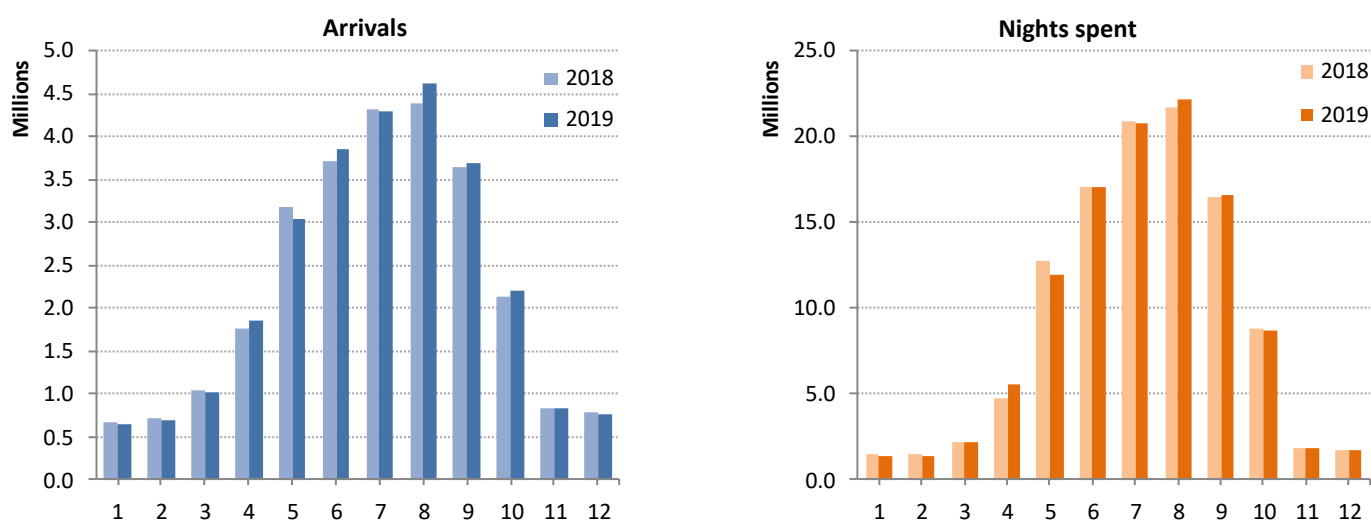
	2018 <sup>(1)</sup>					2019					Change % of total 2019/2018
	Hotels and similar establishments			Tourist campsites		Hotels and similar establishments			Tourist campsites		
	Total	Residents	Non- residents	Residents	Non- residents	Total	Residents	Non- residents	Residents	Non- residents	
Total	27,175,280	7,342,137	19,376,730	152,201	304,212	27,539,434	7,369,417	19,694,349	161,393	314,275	1.3
January	665,889	454,290	211,227	130	242	640,395	431,834	208,170	123	268	-3.8
February	711,067	473,564	237,050	120	333	683,702	439,306	243,981	97	318	-3.8
March	1,032,230	557,485	473,814	191	740	1,029,916	592,263	436,512	184	957	-0.2
April	1,770,265	661,841	1,100,268	1,087	7,069	1,863,610	672,064	1,181,583	1,019	8,944	5.3
May	3,184,464	650,986	2,489,856	8,860	34,762	3,035,350	579,757	2,416,815	4,890	33,888	-4.7
June	3,712,994	637,975	3,015,308	16,616	43,095	3,847,812	697,685	3,078,585	21,876	49,666	3.6
July	4,309,267	799,238	3,384,661	47,584	77,784	4,300,935	789,609	3,385,486	48,168	77,672	-0.2
August	4,393,194	906,297	3,332,132	67,859	86,906	4,617,561	961,142	3,492,493	74,592	89,334	5.1
September	3,644,171	656,368	2,934,070	8,601	45,132	3,700,874	639,787	3,007,427	9,320	44,340	1.6
October	2,135,091	508,276	1,618,993	606	7,216	2,213,257	557,848	1,646,691	789	7,929	3.7
November	829,633	470,449	358,332	238	614	834,403	471,859	361,721	209	614	0.6
December	787,015	565,368	221,019	309	319	771,619	536,263	234,885	126	345	-2.0

**Table 2. Nights spent of residents and non-residents in hotels, similar establishments and tourist campsites, by month, 2018<sup>(1)</sup> and 2019**

	2018 <sup>(1)</sup>					2019					Change % of total 2019/2018
	Hotels and similar establishments			Tourist campsites		Hotels and similar establishments			Tourist campsites		
	Total	Residents	Non- residents	Residents	Non- residents	Total	Residents	Non- residents	Residents	Non- residents	
Total	111,422,670	16,845,128	92,613,596	855,124	1,108,822	111,316,903	16,801,660	92,405,320	940,956	1,168,967	-0.1
January	1,450,138	924,992	523,989	306	851	1,365,266	857,470	505,820	1,011	965	-5.9
February	1,549,780	948,107	600,426	285	962	1,433,590	838,666	593,415	630	879	-7.5
March	2,244,613	1,103,219	1,138,707	549	2,138	2,213,638	1,165,842	1,044,675	810	2,311	-1.4
April	4,786,361	1,436,262	3,331,513	3,258	15,328	5,523,398	1,453,384	4,045,634	3,728	20,652	15.4
May	12,727,417	1,341,583	11,220,705	65,951	99,178	11,911,061	1,165,868	10,582,260	66,275	96,658	-6.4
June	17,011,420	1,430,250	15,318,406	98,803	163,961	17,070,122	1,568,024	15,173,917	135,051	193,130	0.3
July	20,936,449	2,187,070	18,194,490	250,768	304,121	20,816,590	2,165,618	18,074,606	260,416	315,950	-0.6
August	21,715,342	2,891,753	18,112,419	373,228	337,942	22,180,605	3,027,762	18,407,849	393,604	351,390	2.1
September	16,538,216	1,498,917	14,818,477	57,985	162,837	16,544,046	1,448,300	14,861,575	72,991	161,180	0.0
October	8,870,053	1,018,525	7,830,695	2,444	18,389	8,717,204	1,120,599	7,569,862	4,562	22,181	-1.7
November	1,824,651	884,388	937,438	772	2,053	1,840,268	893,671	943,079	1,231	2,287	0.9
December	1,768,230	1,180,062	586,331	775	1,062	1,701,115	1,096,456	602,628	647	1,384	-3.8

(1) Revised data.

Graph 1. Arrivals and nights spent in hotels, similar establishments and tourist campsites, by month, 2018<sup>(1)</sup> and 2019



Graph 2. Arrivals and nights spent by residents and non-residents in hotels, similar establishments and tourist campsites, 2019

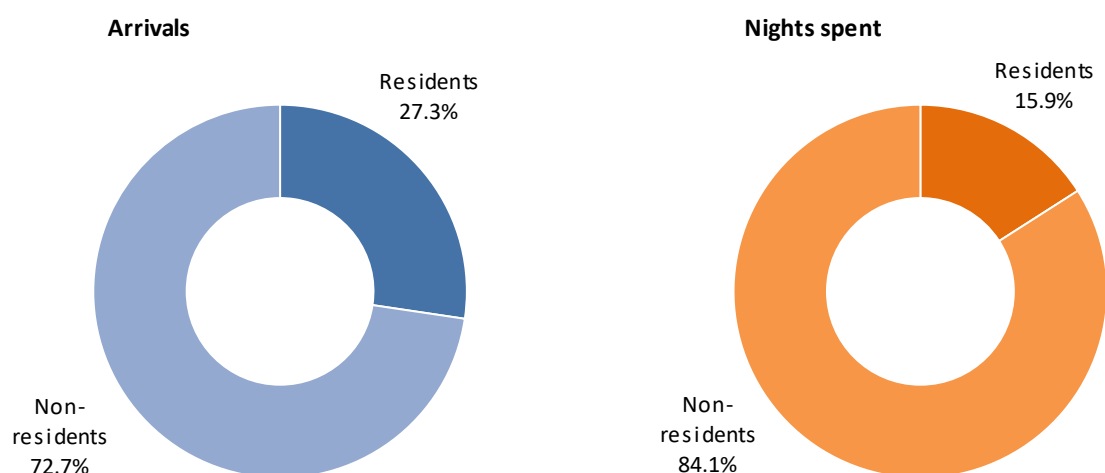
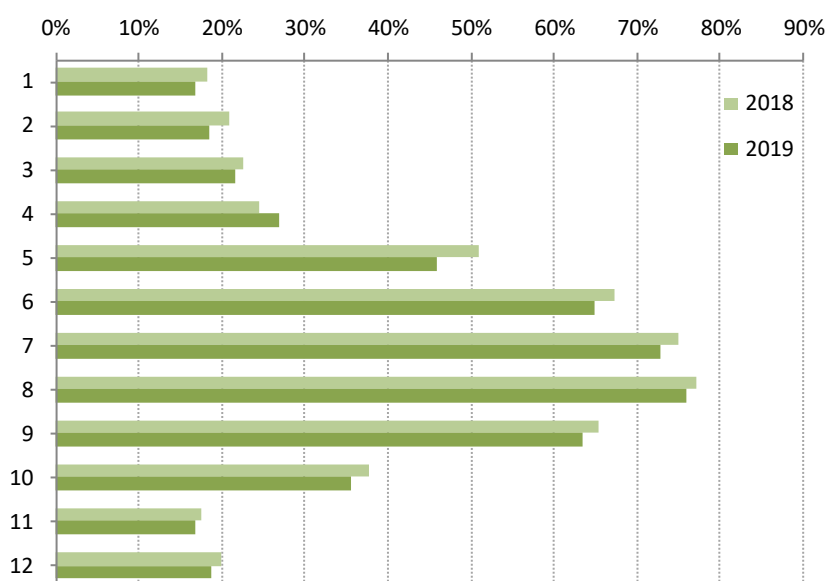


Table 3. Occupancy rate of bed-places in hotels and similar establishments, by month, 2018<sup>(1)</sup> and 2019

	Occupancy of bed-places %	
	2018 <sup>(1)</sup>	2019
<b>Annual occupancy</b>	<b>50.6</b>	<b>48.7</b>
January	18.3	16.8
February	20.8	18.4
March	22.6	21.5
April	24.5	26.8
May	50.9	45.9
June	67.3	65.0
July	75.1	72.9
August	77.2	76.0
September	65.5	63.5
October	37.8	35.5
November	17.6	16.9
December	20.0	18.7

Graph 3. Occupancy rate of bed-places in hotels and similar establishments, by month, 2018<sup>(1)</sup> and 2019



(1) Revised data.

**Table 4. Arrivals at hotels, similar establishments and tourist campsites, by NUTS 2 Region, 2018<sup>(1)</sup> and 2019**

	2018 <sup>(1)</sup>				2019				Change % of total 2019/2018
	Total	Hotels and similar establishments	Tourist campsites	Percentage % of total	Total	Hotels and similar establishments	Tourist campsites	Percentage % of total	
<b>Total</b>	<b>27,175,280</b>	<b>26,718,867</b>	<b>456,413</b>	<b>100.0</b>	<b>27,539,434</b>	<b>27,063,766</b>	<b>475,668</b>	<b>100.0</b>	<b>1.3</b>
Anatoliki Makedonia, Thraki	743,658	715,274	28,384	2.7	754,255	720,197	34,058	2.7	1.4
Kentriki Makedonia	3,208,318	3,078,324	129,994	11.8	3,227,544	3,092,167	135,377	11.7	0.6
Dytiki Makedonia <sup>(2)</sup>	143,538	143,538		0.5	152,498	152,498		0.6	6.2
Thessalia	1,128,188	1,103,055	25,133	4.2	1,174,990	1,145,714	29,276	4.3	4.1
Ipeiros	640,432	620,253	20,179	2.4	633,486	611,459	22,027	2.3	-1.1
Ionia Nisia	2,276,666	2,249,351	27,315	8.4	2,315,832	2,290,210	25,622	8.4	1.7
Dytiki Ellada	730,998	703,144	27,854	2.7	736,800	704,592	32,208	2.7	0.8
Stereia Ellada	798,442	777,273	21,169	2.9	839,019	817,403	21,616	3.0	5.1
Peloponnisos	1,631,176	1,545,023	86,153	6.0	1,581,151	1,492,741	88,410	5.7	-3.1
Attiki	4,766,434	4,752,032	14,402	17.5	4,858,779	4,844,993	13,786	17.6	1.9
Voreio Aigaio <sup>(3)</sup>	389,048	389,048		1.4	401,790	401,790		1.5	3.3
Notio Aigaio	5,580,839	5,519,195	61,644	20.5	5,815,159	5,756,216	58,943	21.1	4.2
Kriti	5,137,543	5,123,357	14,186	18.9	5,048,131	5,033,786	14,345	18.3	-1.7

**Table 5. Nights spent in hotels, similar establishments and tourist campsites, by NUTS 2 Region, 2018<sup>(1)</sup> and 2019**

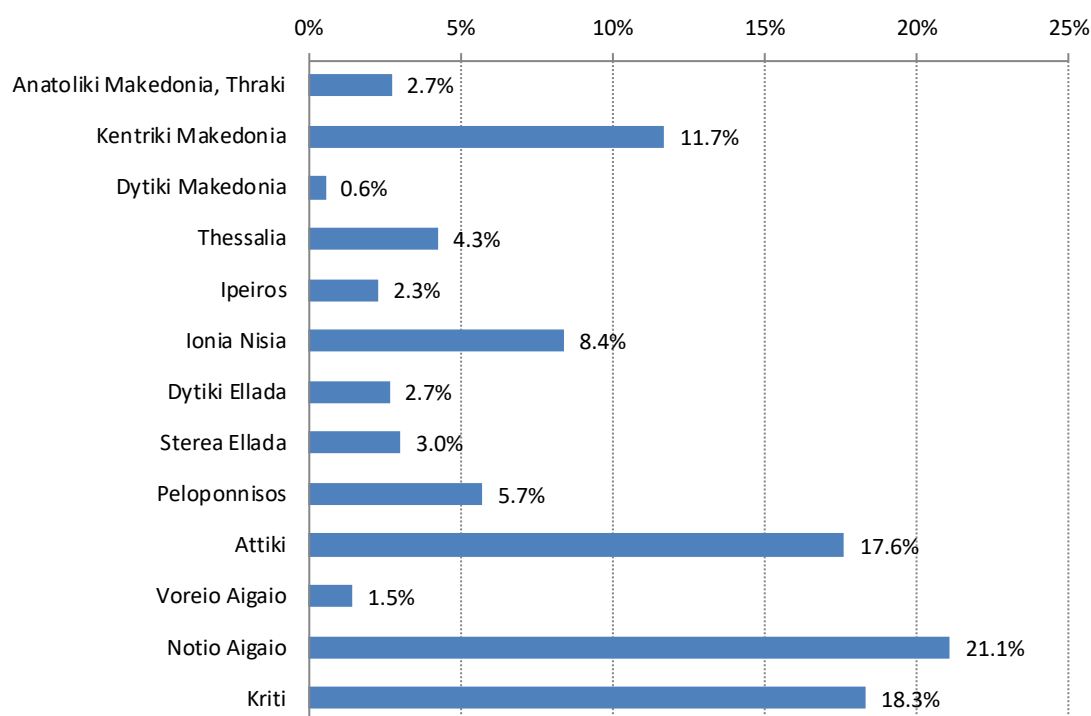
	2018 <sup>(1)</sup>				2019				Change % of total 2019/2018
	Total	Hotels and similar establishments	Tourist campsites	Percentage % of total	Total	Hotels and similar establishments	Tourist campsites <sup>1)</sup>	Percentage % of total	
<b>Total</b>	<b>111,422,670</b>	<b>109,458,724</b>	<b>1,963,946</b>	<b>100.0</b>	<b>111,316,903</b>	<b>109,206,980</b>	<b>2,109,923</b>	<b>100.0</b>	<b>-0.1</b>
Anatoliki Makedonia, Thraki	2,334,964	2,185,358	149,606	2.1	2,316,806	2,152,142	164,664	2.1	-0.8
Kentriki Makedonia	11,504,933	10,741,397	763,536	10.3	11,673,863	10,809,343	864,520	10.5	1.5
Dytiki Makedonia <sup>(2)</sup>	340,159	340,159		0.3	312,803	312,803		0.3	-8.0
Thessalia	2,683,520	2,612,402	71,118	2.4	2,763,100	2,661,626	101,474	2.5	3.0
Ipeiros	1,615,661	1,550,470	65,191	1.5	1,634,104	1,558,985	75,119	1.5	1.1
Ionia Nisia	12,908,087	12,772,411	135,676	11.6	12,917,772	12,790,429	127,343	11.6	0.1
Dytiki Ellada	2,053,935	1,972,498	81,437	1.8	2,107,757	1,999,273	108,484	1.9	2.6
Stereia Ellada	2,245,312	2,164,657	80,655	2.0	2,234,274	2,163,593	70,681	2.0	-0.5
Peloponnisos	4,382,634	4,056,025	326,609	3.9	4,264,205	3,936,868	327,337	3.8	-2.7
Attiki	10,207,053	10,172,299	34,754	9.2	10,291,896	10,260,847	31,049	9.2	0.8
Voreio Aigaio <sup>(3)</sup>	2,060,052	2,060,052		1.8	2,005,706	2,005,706		1.8	-2.6
Notio Aigaio	30,039,359	29,827,901	211,458	27.0	30,787,732	30,592,824	194,908	27.7	2.5
Kriti	29,047,001	29,003,095	43,906	26.1	28,006,885	27,962,541	44,344	25.2	-3.6

(1) Revised data.

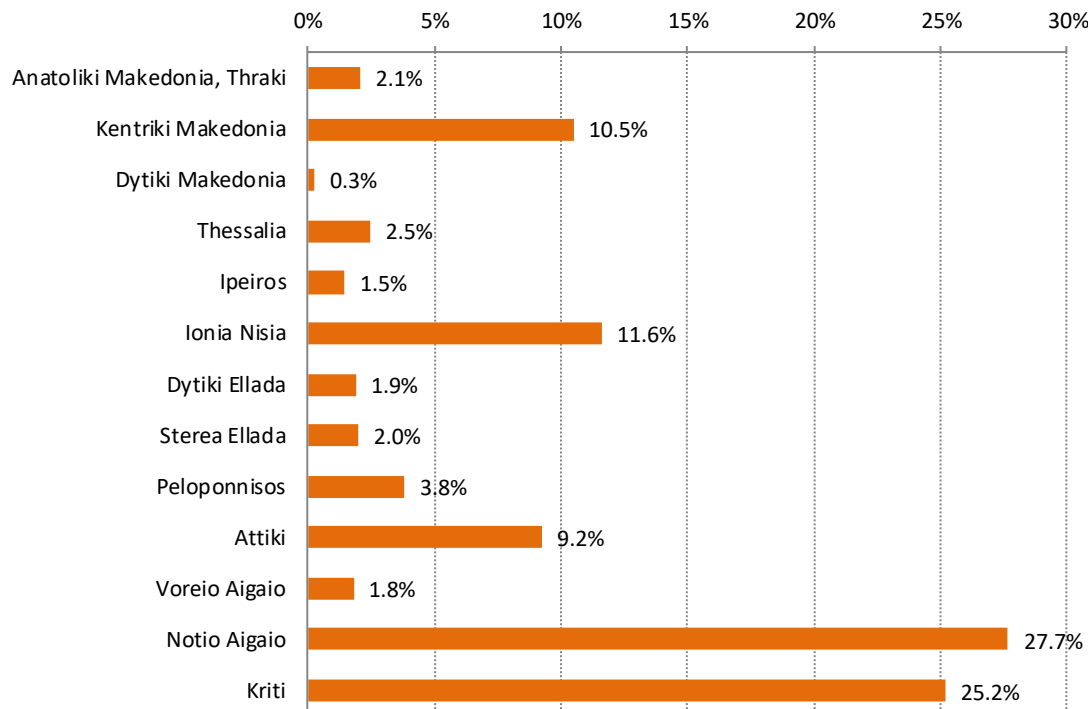
(2) The arrivals and nights spent refer to hotels, similar establishments and tourist campsites, which are registered to the Hellenic Chamber of Hotels. In the Region of Voreio Aigaio no tourist campsites are registered to the Hellenic Chamber of Hotels.

(3) For reasons of statistical confidentiality regarding the protection of the identity of the surveyed units, data on tourist campsites in the Region of Voreio Aigaio have been included in the relevant data for the Region of Notio Aigaio.

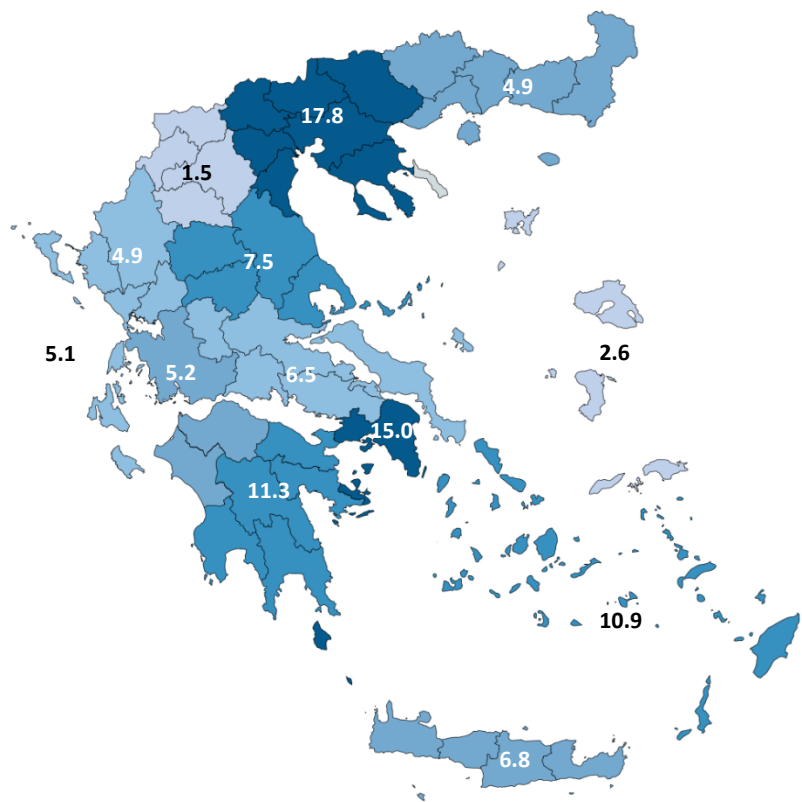
**Graph 4. Percentage distribution of arrivals at hotels, similar establishments and tourist campsites, by NUTS 2 Region, 2019**



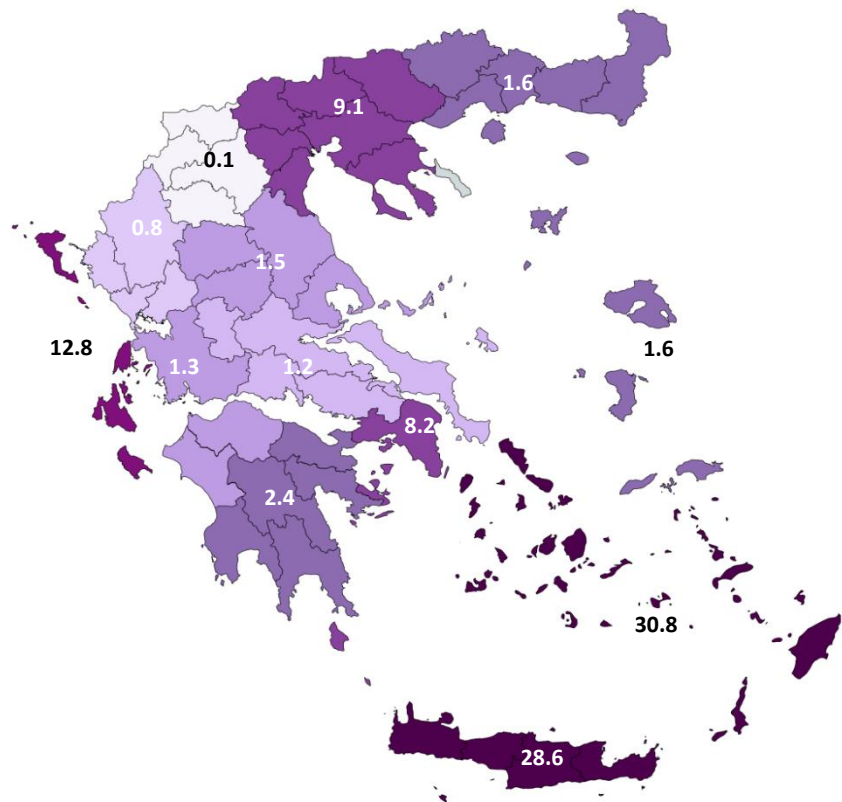
**Graph 5. Percentage distribution of nights spent in hotels, similar establishments and tourist campsites, by NUTS 2 Region, 2019**



**Graph 6. Percentage distribution of nights spent by residents in hotels, similar establishments and tourist campsites, by NUTS 2 Region, 2019**



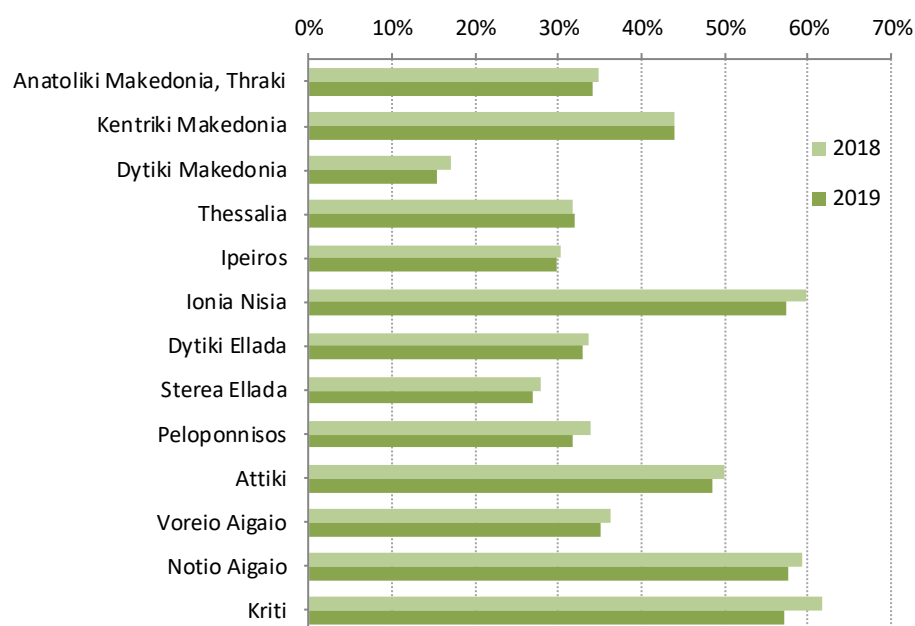
**Graph 7. Percentage distribution of nights spent by non-residents in hotels, similar establishments and tourist campsites, by NUTS 2 Region, 2019**



**Table 6. Occupancy rate of bed-places in hotels and similar establishments, by NUTS 2 Region, 2018<sup>(1)</sup> and 2019**

	Occupancy rate of bed-places %	
	2018 <sup>(1)</sup>	2019
<b>Annual occupancy</b>	<b>50.6</b>	<b>48.7</b>
Anatoliki Makedonia, Thraki	34.8	34.2
Kentriki Makedonia	44.0	43.9
Dytiki Makedonia	17.0	15.3
Thessalia	31.8	31.9
Ipeiros	30.4	29.8
Ionia Nisia	59.8	57.3
Dytiki Ellada	33.7	33.0
Stereia Ellada	27.8	26.8
Peloponnisos	34.0	31.8
Attiki	49.9	48.5
Voreio Aigaio	36.4	35.0
Notio Aigaio	59.4	57.7
Kriti	61.7	57.2

**Graph 8. Occupancy rate of bed-places in hotels and similar establishments, by NUTS 2 Region, 2018<sup>(1)</sup> and 2019**



(1) Revised data.



**Table 7. Arrivals of non-residents at hotels, similar establishments and tourist campsites, by country of residence, 2018<sup>(1)</sup> and 2019**

2018 <sup>(1)</sup>					2019				Change % of total 2019/2018
Total	Hotels and similar establishments	Tourist campsites	Percentage % of total	Percentage % of total	Hotels and similar establishments	Tourist campsites	Percentage % of total		
Total	19,680,942	19,376,730	304,212	100.0	20,008,624	19,694,349	314,275	100.0	1.7
Europe	15,976,174	15,694,387	281,787	81.2	15,976,471	15,688,063	288,408	79.8	0.0
European Union	13,579,479	13,324,285	255,194	69.0	13,617,203	13,357,920	259,283	68.1	0.3
Austria	273,087	261,475	11,612	1.4	291,240	277,848	13,392	1.5	6.6
Belgium	384,651	379,980	4,671	2.0	388,050	383,261	4,789	1.9	0.9
Bulgaria	313,963	279,450	34,513	1.6	328,539	292,429	36,110	1.6	4.6
France	1,493,121	1,447,879	45,242	7.6	1,547,776	1,507,261	40,515	7.7	3.7
Germany	2,782,837	2,724,147	58,690	14.1	2,775,485	2,710,633	64,852	13.9	-0.3
Denmark	369,619	367,919	1,700	1.9	342,335	340,374	1,961	1.7	-7.4
Estonia	39,915	39,748	167	0.2	33,342	33,169	173	0.2	-16.5
United Kingdom	2,630,185	2,621,452	8,733	13.4	2,752,734	2,745,638	7,096	13.8	4.7
Ireland	75,932	74,651	1,281	0.4	84,626	83,389	1,237	0.4	11.4
Spain	276,755	272,620	4,135	1.4	304,438	300,252	4,186	1.5	10.0
Italy	928,811	898,880	29,931	4.7	940,438	909,692	30,746	4.7	1.3
Croatia	28,026	27,839	187	0.1	25,727	25,586	141	0.1	-8.2
Cyprus	251,550	251,058	492	1.3	228,048	227,544	504	1.1	-9.3
Latvia	31,489	31,364	125	0.2	30,241	30,160	81	0.2	-4.0
Lithuania	71,520	71,256	264	0.4	52,219	52,028	191	0.3	-27.0
Luxembourg	26,077	25,963	114	0.1	28,463	28,315	148	0.1	9.1
Malta	10,011	9,990	21	0.1	8,436	8,399	37	0.0	-15.7
Netherlands	762,606	740,101	22,505	3.9	749,511	726,621	22,890	3.7	-1.7
Hungary	98,957	96,188	2,769	0.5	99,916	97,197	2,719	0.5	1.0
Poland	844,679	834,598	10,081	4.3	754,342	745,700	8,642	3.8	-10.7
Portugal	44,458	43,830	628	0.2	48,916	48,348	568	0.2	10.0
Romania	451,571	444,543	7,028	2.3	465,556	457,864	7,692	2.3	3.1
Slovak Republic	101,517	100,671	846	0.5	93,862	93,037	825	0.5	-7.5
Slovenia	46,239	42,149	4,090	0.2	46,634	42,390	4,244	0.2	0.9
Sweden	667,947	666,723	1,224	3.4	608,307	607,046	1,261	3.0	-8.9
Czechia	314,579	310,679	3,900	1.6	316,539	312,534	4,005	1.6	0.6
Finland	259,377	259,132	245	1.3	271,483	271,205	278	1.4	4.7
Total of other European countries	2,396,695	2,370,102	26,593	12.2	2,359,268	2,330,143	29,125	11.8	-1.6
Iceland	12,930	12,854	76	0.1	11,817	11,775	42	0.1	-8.6
Norway	371,513	371,159	354	1.9	356,102	355,802	300	1.8	-4.1
Switzerland (incl. Liechtenstein)	296,039	286,922	9,117	1.5	284,544	274,777	9,767	1.4	-3.9
Russia	919,517	917,639	1,878	4.7	854,779	853,244	1,535	4.3	-7.0
Turkey	266,538	262,742	3,796	1.4	269,323	265,685	3,638	1.3	1.0
Other European countries	530,158	518,786	11,372	2.7	582,703	568,860	13,843	2.9	9.9
Africa	82,095	81,579	516	0.4	102,213	101,658	555	0.5	24.5
America	1,701,737	1,691,389	10,348	8.6	1,905,824	1,895,839	9,985	9.5	12.0
North America	1,454,680	1,448,714	5,966	7.4	1,642,114	1,636,230	5,884	8.2	12.9
USA	1,241,438	1,238,401	3,037	6.3	1,409,671	1,406,790	2,881	7.0	13.6
Canada	213,242	210,313	2,929	1.1	232,443	229,440	3,003	1.2	9.0
South and Central America	247,057	242,675	4,382	1.3	263,710	259,609	4,101	1.3	6.7
Asia	1,542,595	1,540,406	2,189	7.8	1,646,011	1,644,081	1,930	8.2	6.7
Japan	86,865	86,709	156	0.4	101,819	101,659	160	0.5	17.2
People's republic of China	401,385	401,113	272	2.0	400,807	400,632	175	2.0	-0.1
Other Asian countries	1,054,345	1,052,584	1,761	5.4	1,143,385	1,141,790	1,595	5.7	8.4
Oceania	352,860	343,506	9,354	1.8	353,224	339,848	13,376	1.8	0.1
Australia	330,049	321,914	8,135	1.7	327,823	315,876	11,947	1.6	-0.7
New Zealand and other Oceanian territories	22,811	21,592	1,219	0.1	25,401	23,972	1,429	0.1	11.4
Not specified	25,481	25,463	18	0.1	24,881	24,860	21	0.1	-2.4

(1) Revised data.

**Table 8. Nights spent by non-residents in hotels, similar establishments and tourist campsites, by country of residence, 2018<sup>(1)</sup> and 2019**

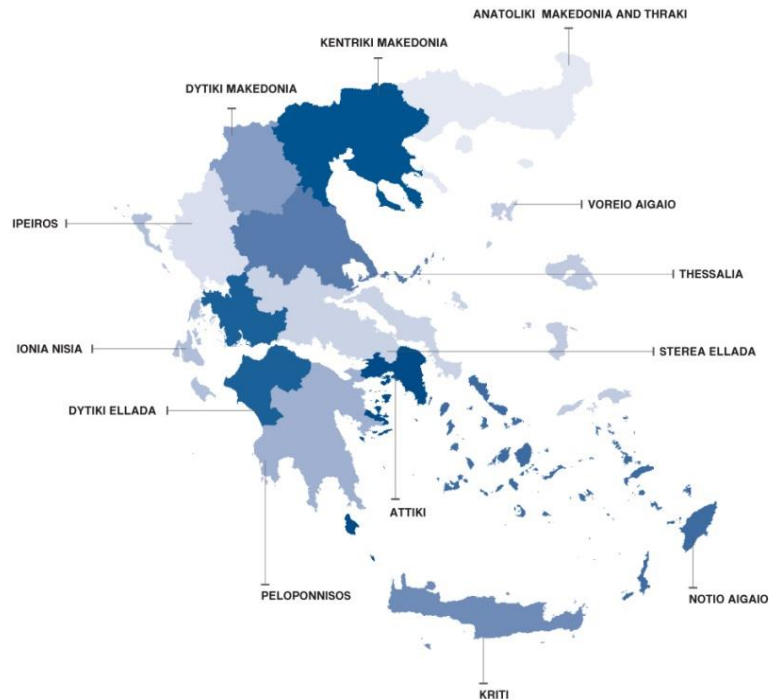
	2018 <sup>(1)</sup>				2019				Change % of total 2019/2018
	Total	Hotels and similar establishments	Tourist campsites	Percentage % of total	Total	Hotels and similar establishments	Tourist campsites	Percentage % of total	
<b>Total</b>	<b>93,722,418</b>	<b>92,613,596</b>	<b>1,108,822</b>	<b>100.0</b>	<b>93,574,287</b>	<b>92,405,320</b>	<b>1,168,967</b>	<b>100.0</b>	<b>-0.2</b>
<b>Europe</b>	<b>84,849,807</b>	<b>83,808,385</b>	<b>1,041,422</b>	<b>90.5</b>	<b>83,666,784</b>	<b>82,567,528</b>	<b>1,099,256</b>	<b>89.4</b>	<b>-1.4</b>
<b>European Union</b>	<b>72,131,031</b>	<b>71,224,130</b>	<b>906,901</b>	<b>77.0</b>	<b>71,306,376</b>	<b>70,351,461</b>	<b>954,915</b>	<b>76.2</b>	<b>-1.1</b>
Austria	1,544,848	1,494,830	50,018	1.6	1,601,125	1,547,658	53,467	1.7	3.6
Belgium	2,016,609	2,002,827	13,782	2.2	2,002,344	1,987,828	14,516	2.1	-0.7
Bulgaria	1,063,466	897,747	165,719	1.1	1,130,181	944,580	185,601	1.2	6.3
France	5,919,303	5,804,657	114,646	6.3	6,081,668	5,974,954	106,714	6.5	2.7
Germany	17,334,078	17,125,221	208,857	18.5	16,929,381	16,693,103	236,278	18.1	-2.3
Denmark	2,198,563	2,189,374	9,189	2.3	2,058,265	2,048,597	9,668	2.2	-6.4
Estonia	214,448	214,043	405	0.2	180,317	179,864	453	0.2	-15.9
United Kingdom	15,530,216	15,503,306	26,910	16.6	15,937,161	15,910,756	26,405	17.0	2.6
Ireland	307,434	302,963	4,471	0.3	344,822	340,481	4,341	0.4	12.2
Spain	638,541	628,014	10,527	0.7	682,627	672,095	10,532	0.7	6.9
Italy	3,743,912	3,637,168	106,744	4.0	3,803,003	3,691,196	111,807	4.1	1.6
Croatia	80,105	79,406	699	0.1	77,173	76,665	508	0.1	-3.7
Cyprus	696,198	694,099	2,099	0.7	621,178	619,432	1,746	0.7	-10.8
Latvia	176,243	175,970	273	0.2	162,689	162,459	230	0.2	-7.7
Lithuania	388,247	387,699	548	0.4	282,008	281,555	453	0.3	-27.4
Luxembourg	135,890	135,216	674	0.1	142,395	141,542	853	0.2	4.8
Malta	37,544	37,480	64	0.0	29,497	29,397	100	0.0	-21.4
Netherlands	4,392,576	4,318,072	74,504	4.7	4,299,899	4,226,076	73,823	4.6	-2.1
Hungary	526,876	514,375	12,501	0.6	523,261	511,264	11,997	0.6	-0.7
Poland	4,819,647	4,786,403	33,244	5.1	4,319,467	4,290,023	29,444	4.6	-10.4
Portugal	146,319	144,774	1,545	0.2	166,994	165,106	1,888	0.2	14.1
Romania	1,862,554	1,829,588	32,966	2.0	1,910,834	1,874,619	36,215	2.0	2.6
Slovak Republic	653,700	649,613	4,087	0.7	602,304	598,336	3,968	0.6	-7.9
Slovenia	206,518	192,757	13,761	0.2	208,389	194,311	14,078	0.2	0.9
Sweden	3,891,550	3,887,409	4,141	4.2	3,552,092	3,547,753	4,339	3.8	-8.7
Czechia	2,005,001	1,991,275	13,726	2.1	2,015,129	2,000,586	14,543	2.2	0.5
Finland	1,600,645	1,599,844	801	1.7	1,642,173	1,641,225	948	1.8	2.6
<b>Total of other European countries</b>	<b>12,718,776</b>	<b>12,584,255</b>	<b>134,521</b>	<b>13.6</b>	<b>12,360,408</b>	<b>12,216,067</b>	<b>144,341</b>	<b>13.2</b>	<b>-2.8</b>
Iceland	54,620	54,349	271	0.1	55,519	55,400	119	0.1	1.6
Norway	2,400,033	2,398,842	1,191	2.6	2,248,859	2,247,804	1,055	2.4	-6.3
Switzerland (incl. Liechtenstein)	1,428,193	1,401,675	26,518	1.5	1,341,393	1,313,709	27,684	1.4	-6.1
Russia	5,853,099	5,844,347	8,752	6.2	5,548,242	5,541,294	6,948	5.9	-5.2
Turkey	529,119	519,834	9,285	0.6	537,206	528,193	9,013	0.6	1.5
Other European countries	2,453,712	2,365,208	88,504	2.6	2,629,189	2,529,667	99,522	2.8	7.2
<b>Africa</b>	<b>259,816</b>	<b>257,462</b>	<b>2,354</b>	<b>0.3</b>	<b>367,966</b>	<b>365,662</b>	<b>2,304</b>	<b>0.4</b>	<b>41.6</b>
<b>America</b>	<b>3,895,640</b>	<b>3,866,942</b>	<b>28,698</b>	<b>4.2</b>	<b>4,420,764</b>	<b>4,392,944</b>	<b>27,820</b>	<b>4.7</b>	<b>13.5</b>
<b>North America</b>	<b>3,311,881</b>	<b>3,295,170</b>	<b>16,711</b>	<b>3.5</b>	<b>3,791,969</b>	<b>3,775,401</b>	<b>16,568</b>	<b>4.1</b>	<b>14.5</b>
USA	2,799,056	2,791,192	7,864	3.0	3,236,315	3,228,994	7,321	3.5	15.6
Canada	512,825	503,978	8,847	0.5	555,654	546,407	9,247	0.6	8.4
<b>South and Central America</b>	<b>583,759</b>	<b>571,772</b>	<b>11,987</b>	<b>0.6</b>	<b>628,795</b>	<b>617,543</b>	<b>11,252</b>	<b>0.7</b>	<b>7.7</b>
<b>Asia</b>	<b>3,735,555</b>	<b>3,730,284</b>	<b>5,271</b>	<b>4.0</b>	<b>4,142,288</b>	<b>4,137,248</b>	<b>5,040</b>	<b>4.4</b>	<b>10.9</b>
Japan	162,519	162,155	364	0.2	190,878	190,477	401	0.2	17.4
People's republic of China	657,789	657,101	688	0.7	674,386	673,952	434	0.7	2.5
Other Asian countries	2,915,247	2,911,028	4,219	3.1	3,277,024	3,272,819	4,205	3.5	12.4
<b>Oceania</b>	<b>881,409</b>	<b>850,385</b>	<b>31,024</b>	<b>0.9</b>	<b>880,074</b>	<b>845,576</b>	<b>34,498</b>	<b>0.9</b>	<b>-0.2</b>
Australia	823,211	795,938	27,273	0.9	813,001	782,664	30,337	0.9	-1.2
New Zealand and other Oceanian territories	58,198	54,447	3,751	0.1	67,073	62,912	4,161	0.1	15.2
<b>Not specified</b>	<b>100,191</b>	<b>100,138</b>	<b>53</b>	<b>0.1</b>	<b>96,411</b>	<b>96,362</b>	<b>49</b>	<b>0.1</b>	<b>-3.8</b>

(1) Revised data.

## EXPLANATORY NOTES

<b>Arrivals and nights spent at hotels, similar establishments and tourist campsites</b>	Data on arrivals and nights spent at hotels, similar establishments and tourist campsites are collected from a monthly census survey. Each establishment fills in a questionnaire, for every month that it is in operation. It is mandatory for all hotels, similar establishments and tourist campsites to participate in the survey.
<b>Legal frame</b>	The survey is conducted pursuant to Regulation 692/2011 of the European Parliament and of the Council.
<b>Reference unit</b>	The information on the reference units (hotels, similar establishments and tourist campsites) is obtained from the Register of the Hellenic Chamber of Hotels. On the basis of this Register the relevant databases and registers of the Hellenic Statistical Authority (ELSTAT) are updated on a quarterly basis.
<b>Reference period</b>	January - December 2019 (Final data).
<b>Coverage</b>	The survey results refer to 100% of the total of the available bed-places.
<b>Geographical classification</b>	The geographical classification is based on <i>Nomenclature of Territorial Units for Statistics</i> .

**Map of the 13 Regions (NUTS 2) of Greece**



<b>Definitions</b>	<p><b>Resident:</b> Every person, regardless of citizenship, that has resided in Greece for at least a year, or has arrived in Greece with the intention to reside in the country for at least 1 year.</p> <p><b>Non-resident:</b> Every person, regardless of citizenship, that is not considered to be resident.</p> <p><b>Arrivals:</b> The arrivals at the establishments are calculated for every person separately. The data refer to the total number of persons and not to the total number of rooms that were occupied. Only the persons that had at least one overnight stay at the establishment are counted.</p> <p><b>Nights spent:</b> The nights spent are calculated for every person separately. The data refer to the total number of nights spent by every person and not to the total number of nights spent in every room.</p> <p><b>Occupancy of bed-places:</b> The monthly occupancy of bed-places is calculated on the basis of the number of the bed-places, as reported by each establishment. The rate refers to the occupancy that was accomplished, as compared with the maximum occupancy that is expected according to the available bed-places. The occupancy of the period is the result of the average occupancy rates of every month of the period, weighted by the bed-places that were in operation for each month.</p>
<b>Methodology</b>	<p>This is a census survey and is conducted on a monthly basis. The data are compiled through the collection and processing of the relevant data submitted, via a specific questionnaire, by hotels, similar establishments and tourist campsites for each month of operation. The questionnaires are mostly submitted electronically, via ELSTAT's electronic application "Xenios Zeus" or, alternatively, for establishments that this is not possible, in paper form.</p> <p>The survey is based on the Statistical Register of hotels, similar establishments and tourist campsites, which is updated during the year, so that data refer to the actual number of accommodation establishments and campsites that are in operation.</p> <p>Non-response to the survey is addressed as follows:</p> <ol style="list-style-type: none"> <li>1. Regular reminders are sent out to the establishments that have not responded to the survey, for submitting data.</li> <li>2. For the small percentage of establishments, which despite the reminders still have not responded to the survey, statistical methods are applied for grossing-up of the results to the total of establishments, with the application of appropriate weighting factors to the data of the establishments and campsites that responded to the survey.</li> </ol>

**Data collection during  
the pandemic period  
of coronavirus disease  
2019 (COVID-19)**

As regards the reference year 2019, the supplementary data collection, which is conducted after reminders to the establishments and which had been scheduled to be carried out during March and April 2020, was not realized, given that the operation of tourist accommodation establishments was suspended during these months in the framework of the containment measures against the Covid-19 pandemic. For the compilation of the final data, additional data sources, such as administrative data provided by the Independent Authority for Public Revenue (AADE) and the Register of hotels and tourist campsites of the Hellenic Chamber of Hotels, were used in combination with statistical methods for addressing non-response by grossing-up the collected data to the 100% of the total of the available bed-places.

Data for the reference year 2018, were revised in the present press release, given the fact that the same methodology was applied for the grossing-up of the statistical data to the 100% of the available bed-places.

As regards all previous reference years, data refer to approximately 80% of the available bed-places.

**References**

More information on the survey results on hotels, similar establishments and tourist campsites at a more detailed geographical level is available on the website of ELSTAT at: <http://www.statistics.gr/en/statistics/-/publication/STO12/->