



INDUSTRIAL PRODUCTION INDEX: June 2024, y-o-y increase of 9.5%

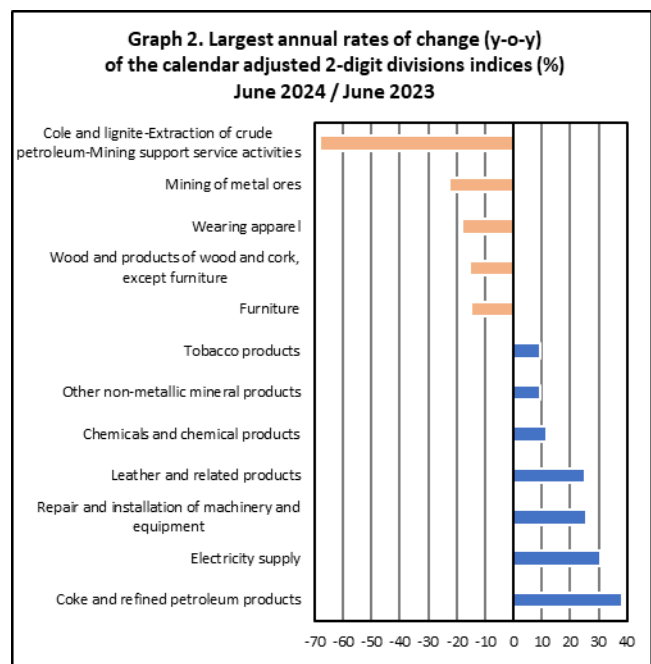
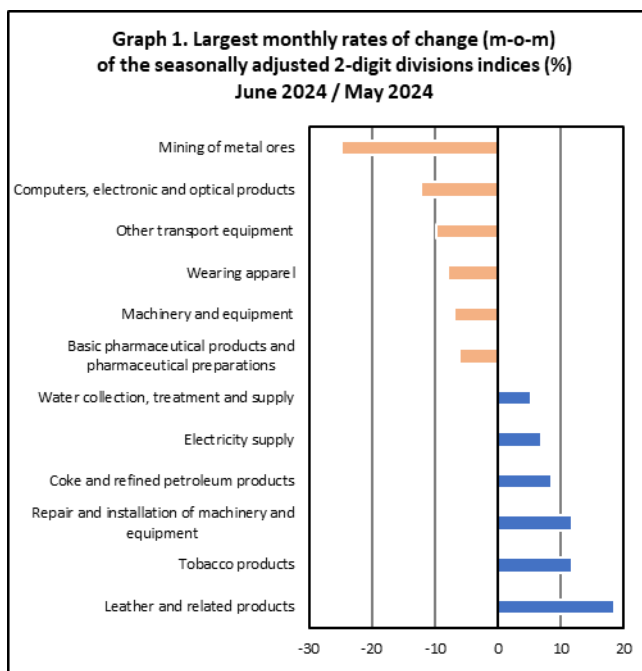
The Hellenic Statistical Authority announces the Industrial Production Index (IPI) with base year 2015=100.0 for June 2024, the evolution of which, on the basis of provisional and working day adjusted data, is as follows:

The Overall Industrial Production Index in June 2024 recorded an increase of 9.5% compared with June 2023. The Overall IPI in June 2023 decreased by 3.0% compared with the corresponding index in June 2022 (Table 1).

The average Overall Industrial Production Index for the period from January to June 2024 recorded an increase of 6.4% compared with the average IPI of the period from January to June 2023 (Table 2).

The seasonally adjusted Overall Industrial Production Index in June 2024 recorded an increase of 1.4% compared with the corresponding index of May 2024 (Table 4).

The index of leather and related products division showed the greatest percentage increase, whereas the index of mining of metal ores division recorded the greatest percentage decrease in June 2024 compared with May 2024. Comparing the indices of June 2024 with the corresponding indices of June 2023, the greatest percentage increase was recorded in coke and refined petroleum products division, while the highest percentage decrease was recorded in mining of coal and lignite – extraction of crude petroleum and natural gas – mining support service activities divisions (Tables 1 and 4).



Information on methodological issues:

Business Statistics Division
Manufacture-Construction Indices and Industrial Products Section
Head of the Section: Diamantaki Aikaterini
Tel: +30 213 135 2056
E-mail: a.diamantaki@statistics.gr

Information on data provision:

Tel: +30 213 135 2023, 2308, 2310
E-mail: data.dissem@statistics.gr

Evolution of the Industrial Production Index in June 2024

I. Annual changes: June 2024 / June 2023 (Table 1)

The 9.5% increase of the working day adjusted Overall IPI in June 2024, compared with the corresponding index in June 2023, is due to the annual changes of the sub-indices in the following industrial sections:

Increase of:

- 30.5% in the Electricity Supply Index.
- 8.9% in the Water Supply Index.
- 5.2% in the Manufacturing Index. The increase was mainly the result of the annual changes of the sub-indices in the following 2-digit divisions: coke and refined petroleum products, repair and installation of machinery and equipment, leather and related products, chemicals and chemical products, other non-metallic mineral products.

Decrease of:

- 6.6% in the Mining and Quarrying Index. The decrease was the result of the annual changes of the sub-indices in the following 2-digit divisions: mining of coal and lignite – extraction of crude petroleum and natural gas – mining support service activities, mining of metal ores.

II. Rates of change of the average index of the period January - June 2024 compared with the corresponding index of the period January - June 2023 (Table 2)

The 6.4% increase of the working day adjusted average Overall IPI in the 6-month period January - June 2024, compared with the corresponding index in January - June 2023, is due to the corresponding rates of change of the sub-indices in the following industrial sections:

Increase of:

- 17.4% in the Electricity Supply Index.
- 4.9% in the Water Supply Index.
- 4.3% in the Manufacturing Index.
- 1.0% in the Mining and Quarrying Index

III. Monthly changes: June 2024 / May 2024 (Table 4)

The 1.4% increase of the seasonally adjusted Overall IPI in June 2024, compared with the corresponding index in May 2024 is due to the monthly changes of the sub-indices in the following industrial sections:

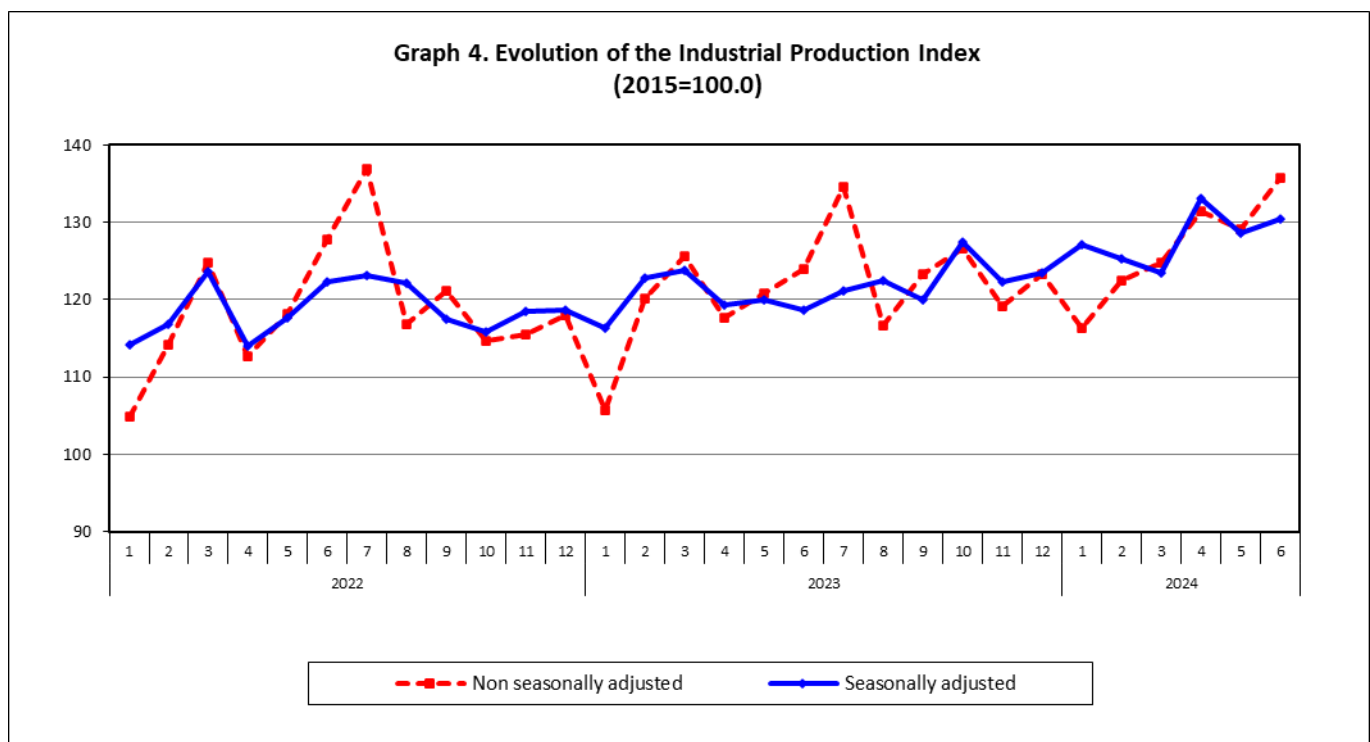
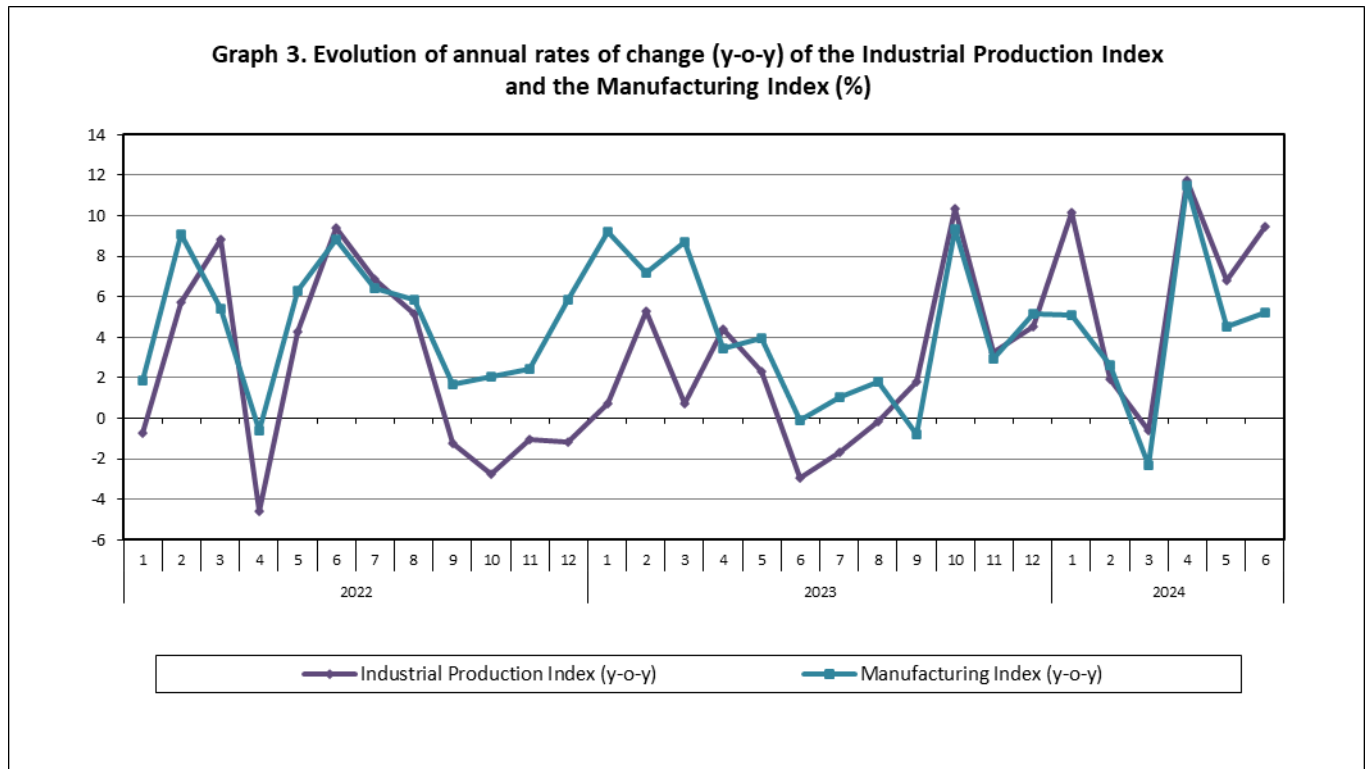
Increase of:

- 6.9% in the Electricity Supply Index.
- 5.4% in the Water Supply Index.

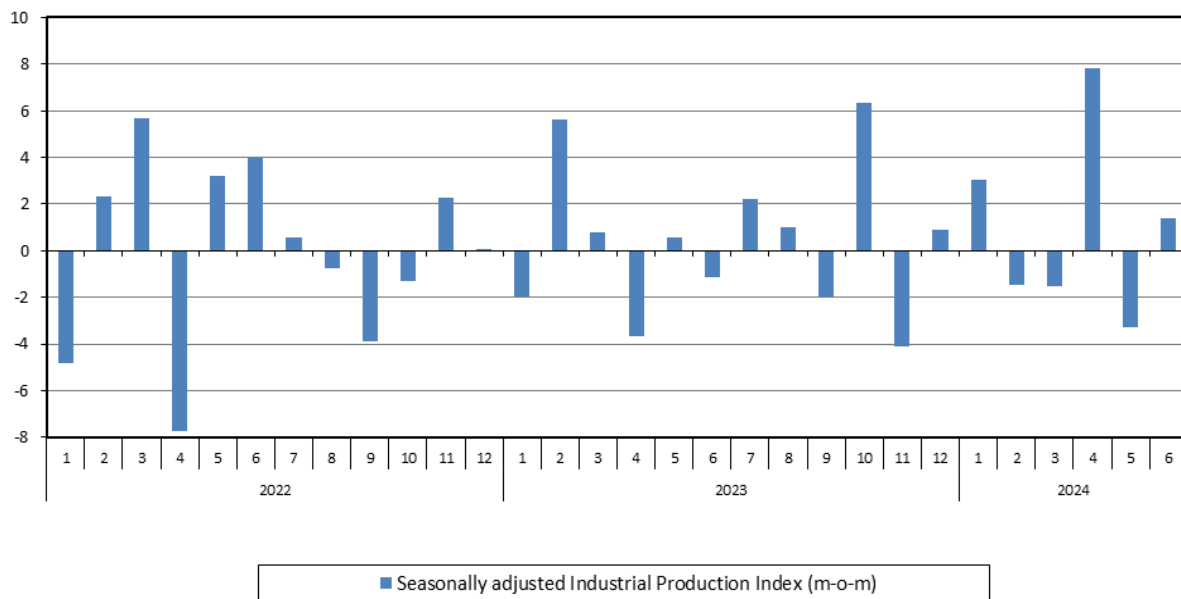
Decrease of:

- 0.8% in the Manufacturing Index.
- 5.0% in the Mining and Quarrying Index.

The following graphs depict the annual rates of change (y-o-y) of the Industrial Production Index and the Manufacturing Index, the evolution of the seasonally and non-seasonally adjusted Overall Industrial Production Index, as well as the monthly rates of change (m-o-m) of the seasonally adjusted index.



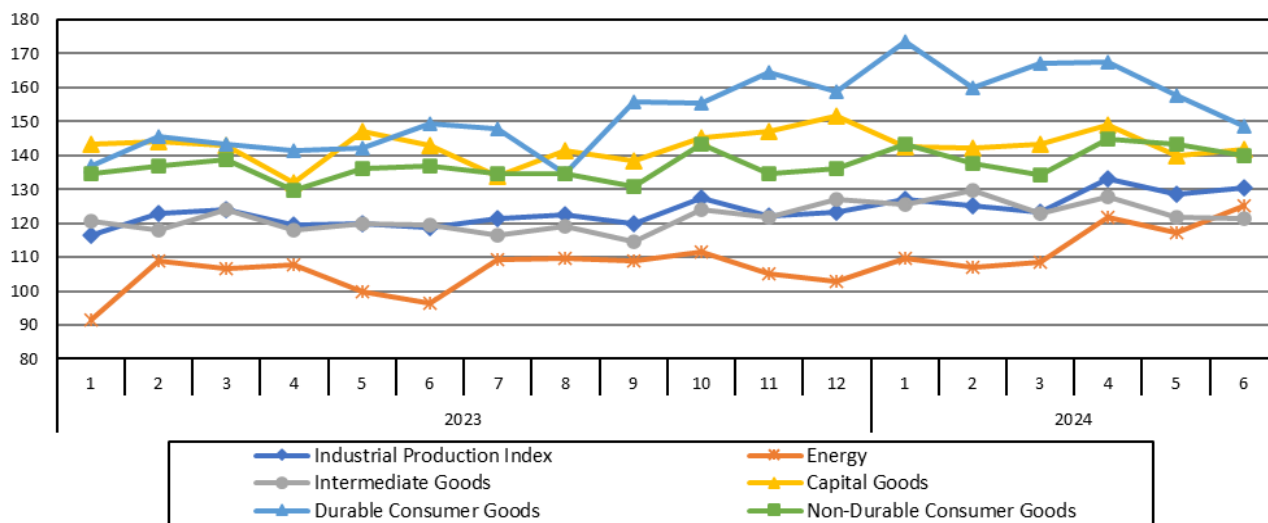
Graph 5. Evolution of the monthly rates of change (m-o-m) of the seasonally adjusted Industrial Production Index (%)



It should be noted that the time series with the seasonally adjusted indices is recalculated every time a new observation is added in the time series. Therefore, the seasonally adjusted data differ from the data published in the previous Announcement.

The following graphs depict the evolution of the seasonally adjusted Industrial Production Index and the Main Industrial Groupings, as well as the evolution of the Industrial Production Index and the Industrial Sections Indices.

Graph 6. Evolution of the seasonally adjusted Industrial Production Index and the Main Industrial Groupings Indices, January 2023 - June 2024 (2015=100.0)



**Graph 7. Evolution of the Industrial Production Index and the Industrial Section Indices
(2015=100.0)**

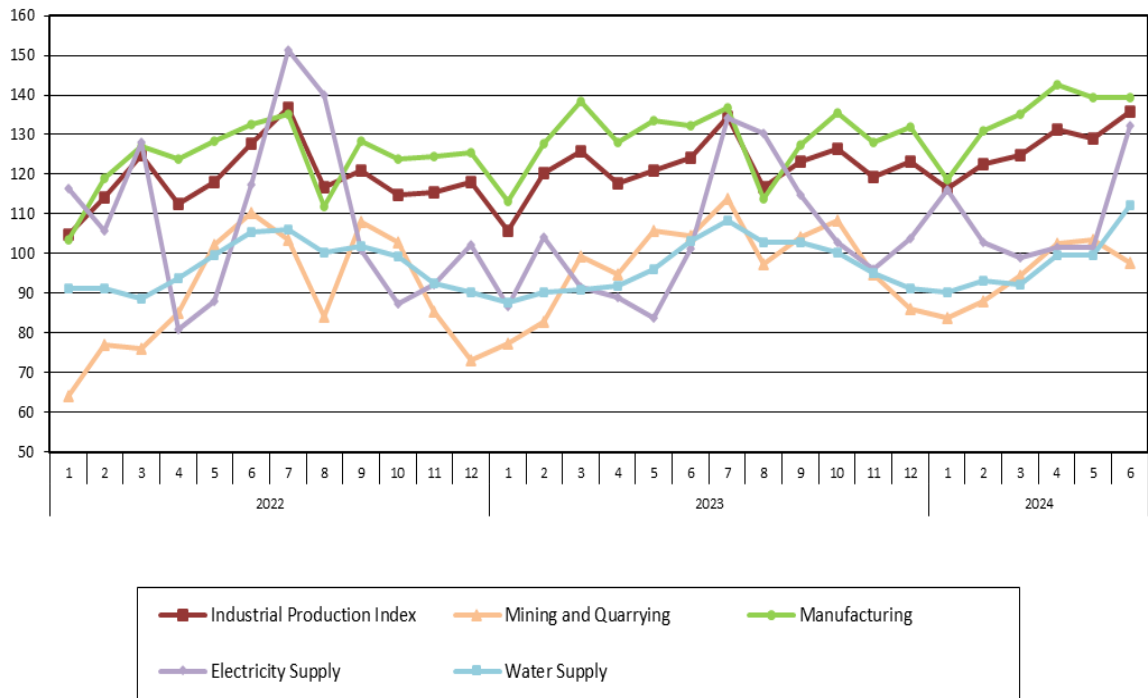


Table 1. Annual rates of change of the Industrial Production Index*(Working day adjusted data, according to the real number of working days)*

Base year: 2015=100.0

Code	Division	June			Rate of change (%)	
		2024*	2023*	2022	2024/2023	2023/2022
OVERALL INDEX		135.82	124.05	127.84	9.5	-3.0
B	MINING AND QUARRYING	97.67	104.52	110.43	-6.6	-5.4
05-06-09	Mining of coal and lignite – Extraction of crude petroleum and natural gas – Mining support service activities	7.03	22.24	8.18	-68.4	171.8
07	Mining of metal ores	86.10	111.51	195.75	-22.8	-43.0
08	Other mining and quarrying	114.97	114.21	96.10	0.7	18.8
C	MANUFACTURING	139.35	132.41	132.56	5.2	-0.1
10	Food	120.78	117.91	109.86	2.4	7.3
11	Beverages	142.00	131.25	136.47	8.2	-3.8
12	Tobacco products	188.65	172.26	133.42	9.5	29.1
13	Textiles	106.93	115.89	122.50	-7.7	-5.4
14	Wearing apparel	54.01	66.03	66.98	-18.2	-1.4
15	Leather and related products	115.31	92.15	75.62	25.1	21.9
16	Wood and products of wood and cork, except furniture	100.79	119.16	133.69	-15.4	-10.9
17	Paper and paper products	113.09	112.46	120.01	0.6	-6.3
18	Printing and reproduction of recorded products	141.21	138.94	154.33	1.6	-10.0
19	Coke and refined petroleum products	119.63	86.36	108.20	38.5	-20.2
20	Chemicals and chemical products	147.94	132.36	136.79	11.8	-3.2
21	Basic pharmaceutical products and pharmaceutical preparations	280.99	286.82	255.81	-2.0	12.1
22	Rubber and plastic products	133.44	136.07	137.78	-1.9	-1.2
23	Other non-metallic mineral products	152.38	139.00	134.77	9.6	3.1
24	Basic metals	135.76	137.42	136.60	-1.2	0.6
25	Fabricated metal products, except machinery and equipment	152.01	163.62	160.16	-7.1	2.2
26	Computers, electronic and optical products	221.09	224.26	246.40	-1.4	-9.0
27	Electrical equipment	147.79	149.53	152.47	-1.2	-1.9
28	Machinery and equipment n. e. c.	135.91	141.60	143.92	-4.0	-1.6
29	Motor vehicles, trailers and semi-trailers	180.66	191.58	190.20	-5.7	0.7
30	Other transport equipment	81.59	81.69	89.12	-0.1	-8.3
31	Furniture	160.94	188.77	180.64	-14.7	4.5
32	Other manufacturing	152.47	153.47	143.84	-0.7	6.7
33	Repair and installation of machinery and equipment	125.88	100.17	104.37	25.7	-4.0
D	ELECTRICITY SUPPLY	132.18	101.31	117.52	30.5	-13.8
35	Electricity supply	132.18	101.31	117.52	30.5	-13.8
E	WATER SUPPLY	112.37	103.17	105.57	8.9	-2.3
36	Water collection, treatment and supply	112.37	103.17	105.57	8.9	-2.3
MAIN INDUSTRIAL GROUPINGS						
1	Energy	125.86	96.57	113.06	30.3	-14.6
2	Intermediate goods	131.18	129.43	131.92	1.4	-1.9
3	Capital goods	148.97	151.32	148.75	-1.6	1.7
4	Consumer Durables	167.19	171.37	164.19	-2.4	4.4
5	Consumer Non-Durables	146.41	143.48	135.18	2.0	6.1

* Provisional data

Note: The indices are rounded up to two decimal digits when published and percentage changes up to one decimal digit when published.

Table 2. Average indices of the period January – June and rates of change of the Industrial Production Index
(Working day adjusted data, according to the real number of working days)

Base year: 2015=100.0

Code	Division	Average indices of the period Jan.-June			Rate of change (%)	
		2024*	2023*	2022	2024/2023	2023/2022
OVERALL INDEX		126.67	119.00	117.06	6.4	1.7
B	MINING AND QUARRYING	95.00	94.03	85.89	1.0	9.5
05-06-09	Mining of coal and lignite – Extraction of crude petroleum and natural gas – Mining support service activities	16.08	24.88	20.32	-35.4	22.4
07	Mining of metal ores	118.31	124.80	120.08	-5.2	3.9
08	Other mining and quarrying	98.58	93.60	83.76	5.3	11.7
C	MANUFACTURING	134.41	128.82	122.42	4.3	5.2
10	Food	118.57	112.92	107.42	5.0	5.1
11	Beverages	108.98	103.26	104.53	5.5	-1.2
12	Tobacco products	162.95	150.53	123.68	8.3	21.7
13	Textiles	108.50	116.72	117.12	-7.0	-0.3
14	Wearing apparel	65.41	75.09	79.26	-12.9	-5.3
15	Leather and related products	96.09	105.04	80.47	-8.5	30.5
16	Wood and products of wood and cork, except furniture	107.00	111.87	110.59	-4.3	1.2
17	Paper and paper products	116.43	115.57	121.52	0.7	-4.9
18	Printing and reproduction of recorded products	140.35	132.71	139.53	5.8	-4.9
19	Coke and refined petroleum products	116.40	107.71	102.17	8.1	5.4
20	Chemicals and chemical products	143.40	130.03	129.34	10.3	0.5
21	Basic pharmaceutical products and pharmaceutical preparations	290.57	284.29	230.19	2.2	23.5
22	Rubber and plastic products	129.66	130.10	133.67	-0.3	-2.7
23	Other non-metallic mineral products	144.61	129.52	123.80	11.7	4.6
24	Basic metals	135.40	134.94	133.77	0.3	0.9
25	Fabricated metal products, except machinery and equipment	141.87	138.13	135.93	2.7	1.6
26	Computers, electronic and optical products	253.15	238.58	202.97	6.1	17.5
27	Electrical equipment	146.76	140.63	145.05	4.4	-3.0
28	Machinery and equipment n. e. c.	127.80	128.85	123.77	-0.8	4.1
29	Motor vehicles, trailers and semi-trailers	142.81	165.13	148.47	-13.5	11.2
30	Other transport equipment	68.82	63.07	67.15	9.1	-6.1
31	Furniture	152.18	159.05	147.44	-4.3	7.9
32	Other manufacturing	129.49	131.73	124.70	-1.7	5.6
33	Repair and installation of machinery and equipment	101.96	93.62	92.27	8.9	1.5
D	ELECTRICITY SUPPLY	108.83	92.74	106.11	17.4	-12.6
35	Electricity supply	108.83	92.74	106.11	17.4	-12.6
E	WATER SUPPLY	97.92	93.34	95.02	4.9	-1.8
36	Water collection, treatment and supply	97.92	93.34	95.02	4.9	-1.8
MAIN INDUSTRIAL GROUPINGS						
1	Energy	109.90	97.40	103.56	12.8	-5.9
2	Intermediate goods	127.86	122.87	122.86	4.1	0.0
3	Capital goods	136.62	135.76	125.85	0.6	7.9
4	Consumer Durables	159.00	140.92	130.88	12.8	7.7
5	Consumer Non-Durables	141.75	136.55	125.85	3.8	8.5

* Provisional data

Note: The indices are rounded up to two decimal digits when published and percentage changes up to one decimal digit when published.

Table 3. Monthly rate of change of the Industrial Production Index
(Working day adjusted data, according to the real number of working days)

Base year: 2015=100.0

Code	Division	June 2024*	May 2024**	Rate of change (%) June 2024/May 2024
OVERALL INDEX		135.82	129.08	5.2
B	MINING AND QUARRYING	97.67	103.47	-5.6
05-06-09	Mining of coal and lignite – Extraction of crude petroleum and natural gas – Mining support service activities	7.03	23.56	-70.2
07	Mining of metal ores	86.10	117.13	-26.5
08	Other mining and quarrying	114.97	110.52	4.0
C	MANUFACTURING	139.35	139.49	-0.1
10	Food	120.78	128.56	-6.1
11	Beverages	142.00	123.90	14.6
12	Tobacco products	188.65	169.08	11.6
13	Textiles	106.93	115.10	-7.1
14	Wearing apparel	54.01	66.17	-18.4
15	Leather and related products	115.31	95.21	21.1
16	Wood and products of wood and cork, except furniture	100.79	106.51	-5.4
17	Paper and paper products	113.09	120.22	-5.9
18	Printing and reproduction of recorded products	141.21	147.52	-4.3
19	Coke and refined petroleum products	119.63	113.06	5.8
20	Chemicals and chemical products	147.94	143.66	3.0
21	Basic pharmaceutical products and pharmaceutical preparations	280.99	302.36	-7.1
22	Rubber and plastic products	133.44	129.36	3.2
23	Other non-metallic mineral products	152.38	144.43	5.5
24	Basic metals	135.76	140.59	-3.4
25	Fabricated metal products, except machinery and equipment	152.01	138.59	9.7
26	Computers, electronic and optical products	221.09	248.95	-11.2
27	Electrical equipment	147.79	155.66	-5.1
28	Machinery and equipment n. e. c.	135.91	140.44	-3.2
29	Motor vehicles, trailers and semi-trailers	180.66	167.64	7.8
30	Other transport equipment	81.59	96.34	-15.3
31	Furniture	160.94	168.41	-4.4
32	Other manufacturing	152.47	150.56	1.3
33	Repair and installation of machinery and equipment	125.88	105.71	19.1
D	ELECTRICITY SUPPLY	132.18	101.50	30.2
35	Electricity supply	132.18	101.50	30.2
E	WATER SUPPLY	112.37	99.55	12.9
36	Water collection, treatment and supply	112.37	99.55	12.9
MAIN INDUSTRIAL GROUPINGS				
1	Energy	125.86	104.79	20.1
2	Intermediate goods	131.18	131.47	-0.2
3	Capital goods	148.97	142.04	4.9
4	Consumer Durables	167.19	175.88	-4.9
5	Consumer Non-Durables	146.41	150.76	-2.9

* Provisional data **Revised data

Note: The indices are rounded up to two decimal digits when published and percentage changes up to one decimal digit when published.

Table 4. Monthly rate of change of the seasonally adjusted Industrial Production Index

Base year: 2015=100.0

Code	Division	June 2024	May 2024	Rate of change (%) June 2024 / May 2024
OVERALL INDEX		130.46	128.67	1.4
B	MINING AND QUARRYING	89.20	93.91	-5.0
05-06-09	Mining of coal and lignite – Extraction of crude petroleum and natural gas – Mining support service activities	-	-	-
07	Mining of metal ores	82.87	110.18	-24.8
08	Other mining and quarrying	99.43	97.39	2.1
C	MANUFACTURING	132.97	134.01	-0.8
10	Food	121.38	125.88	-3.6
11	Beverages	107.86	107.18	0.6
12	Tobacco products	173.53	155.13	11.9
13	Textiles	101.01	102.35	-1.3
14	Wearing apparel	62.05	67.46	-8.0
15	Leather and related products	107.65	90.83	18.5
16	Wood and products of wood and cork, except furniture	95.61	101.19	-5.5
17	Paper and paper products	115.67	117.63	-1.7
18	Printing and reproduction of recorded products	133.07	138.95	-4.2
19	Coke and refined petroleum products	125.08	115.34	8.4
20	Chemicals and chemical products	137.52	132.52	3.8
21	Basic pharmaceutical products and pharmaceutical preparations	274.56	292.62	-6.2
22	Rubber and plastic products	123.64	121.34	1.9
23	Other non-metallic mineral products	138.63	131.86	5.1
24	Basic metals	129.59	134.19	-3.4
25	Fabricated metal products, except machinery and equipment	132.24	125.74	5.2
26	Computers, electronic and optical products	230.33	262.57	-12.3
27	Electrical equipment	140.05	148.27	-5.5
28	Machinery and equipment n. e. c.	124.10	133.36	-6.9
29	Motor vehicles, trailers and semi-trailers	164.71	161.69	1.9
30	Other transport equipment	73.69	81.74	-9.9
31	Furniture	135.98	141.16	-3.7
32	Other manufacturing	137.02	139.78	-2.0
33	Repair and installation of machinery and equipment	119.69	107.04	11.8
D	ELECTRICITY SUPPLY	131.06	122.57	6.9
35	Electricity supply	131.06	122.57	6.9
E	WATER SUPPLY	102.97	97.73	5.4
36	Water collection, treatment and supply	102.97	97.73	5.4
MAIN INDUSTRIAL GROUPINGS				
1	Energy	125.35	117.18	7.0
2	Intermediate goods	121.29	121.88	-0.5
3	Capital goods	141.85	139.78	1.5
4	Consumer Durables	148.45	157.71	-5.9
5	Consumer Non-Durables	139.83	143.43	-2.5

Notes:

1. The indices are rounded up to two decimal digits when published and percentage changes up to one decimal digit when published.
2. The whole time-series with seasonally adjusted indices is recalculated every time a new observation is added in the time-series.
3. The composed index of divisions 05-06-09 is not seasonally adjusted.

Table 5. Evolution of the Overall Industrial Production Index
(Working day adjusted data, according to the real number of working days)

Base year: 2015=100.0

Year and month	Overall Index	Monthly rate of change (%)	Annual rate of change (%)	12-month average index (moving average)	Rate of change of the 12-month average index (%)
2022: 1	104.88	-12.1	-0.7	115.94	9.7
2	114.17	8.9	5.8	116.46	9.9
3	124.73	9.2	8.8	117.30	10.1
4	112.63	-9.7	-4.6	116.85	7.9
5	118.11	4.9	4.3	117.25	7.1
6	127.84	8.2	9.4	118.17	7.1
7	136.86	7.1	6.9	118.90	7.0
8	116.79	-14.7	5.1	119.38	6.6
9	121.10	3.7	-1.2	119.25	5.6
10	114.71	-5.3	-2.8	118.98	4.0
11	115.41	0.6	-1.0	118.88	3.3
12	117.96	2.2	-1.2	118.77	2.4
Annual average	118.77				
2023*: 1	105.63	-10.5	0.7	118.83	2.5
2	120.18	13.8	5.3	119.33	2.5
3	125.66	4.6	0.7	119.41	1.8
4	117.60	-6.4	4.4	119.82	2.5
5	120.86	2.8	2.3	120.05	2.4
6	124.05	2.6	-3.0	119.73	1.3
7	134.56	8.5	-1.7	119.54	0.5
8	116.61	-13.3	-0.2	119.53	0.1
9	123.27	5.7	1.8	119.71	0.4
10	126.57	2.7	10.3	120.70	1.4
11	119.19	-5.8	3.3	121.01	1.8
12	123.30	3.4	4.5	121.46	2.3
Annual average	121.46				
2024*: 1	116.34	-5.6	10.1	122.35	3.0
2	122.53	5.3	2.0	122.54	2.7
3	124.87	1.9	-0.6	122.48	2.6
4	131.41	5.2	11.7	123.63	3.2
5	129.08	-1.8	6.8	124.31	3.6
6	135.82	5.2	9.5	125.29	4.6

* Provisional data

Note: The indices are rounded up to two decimal digits when published and percentage changes up to one decimal digit when published.

Table 6. Monthly evolution of the seasonally adjusted Overall Industrial Production Index and Main Industrial Groupings

Base year: 2015=100.0

Year and month	Overall Index		Energy		Intermediate goods		Capital goods		Consumer durables		Consumer non-durables	
	Index	Monthly rate of change (%)	Index	Monthly rate of change (%)	Index	Monthly rate of change (%)	Index	Monthly rate of change (%)	Index	Monthly rate of change (%)	Index	Monthly rate of change (%)
2022:												
1	114.24	-4.8	106.59	-6.2	118.62	-3.9	118.69	-7.9	118.79	0.4	118.66	-3.5
2	116.90	2.3	102.78	-3.6	122.60	3.3	129.88	9.4	125.69	5.8	125.65	5.9
3	123.57	5.7	121.23	17.9	119.17	-2.8	129.70	-0.1	137.47	9.4	127.50	1.5
4	114.00	-7.7	99.39	-18.0	118.02	-1.0	129.62	-0.1	134.83	-1.9	123.36	-3.2
5	117.68	3.2	104.64	5.3	120.12	1.8	136.09	5.0	133.57	-0.9	125.88	2.0
6	122.35	4.0	112.83	7.8	121.70	1.3	140.00	2.9	139.26	4.3	128.83	2.3
7	123.07	0.6	117.82	4.4	119.68	-1.7	142.43	1.7	133.36	-4.2	126.41	-1.9
8	122.18	-0.7	115.48	-2.0	121.12	1.2	136.41	-4.2	152.88	14.6	125.78	-0.5
9	117.43	-3.9	98.60	-14.6	121.43	0.3	141.71	3.9	137.57	-10.0	129.64	3.1
10	115.90	-1.3	99.21	0.6	116.57	-4.0	137.89	-2.7	148.60	8.0	128.10	-1.2
11	118.54	2.3	101.37	2.2	117.76	1.0	136.12	-1.3	143.37	-3.5	133.99	4.6
12	118.63	0.1	101.26	-0.1	120.32	2.2	134.36	-1.3	153.14	6.8	132.38	-1.2
Annual average	118.71		106.77		119.76		134.41		138.21		127.18	
2023:												
1	116.34	-1.9	91.68	-9.5	120.47	0.1	143.30	6.6	136.75	-10.7	134.77	1.8
2	122.88	5.6	108.85	18.7	118.07	-2.0	143.94	0.4	145.50	6.4	136.88	1.6
3	123.87	0.8	106.67	-2.0	123.90	4.9	142.78	-0.8	143.48	-1.4	138.67	1.3
4	119.31	-3.7	107.91	1.2	118.04	-4.7	131.93	-7.6	141.49	-1.4	129.62	-6.5
5	119.98	0.6	99.89	-7.4	119.72	1.4	147.05	11.5	142.08	0.4	136.20	5.1
6	118.61	-1.1	96.33	-3.6	119.56	-0.1	143.04	-2.7	149.22	5.0	136.79	0.4
7	121.22	2.2	109.39	13.6	116.34	-2.7	133.96	-6.3	147.85	-0.9	134.60	-1.6
8	122.42	1.0	109.69	0.3	119.12	2.4	141.29	5.5	134.55	-9.0	134.77	0.1
9	119.96	-2.0	108.86	-0.8	114.58	-3.8	138.48	-2.0	155.83	15.8	130.85	-2.9
10	127.54	6.3	111.73	2.6	124.06	8.3	145.39	5.0	155.32	-0.3	143.21	9.4
11	122.29	-4.1	105.01	-6.0	121.92	-1.7	147.00	1.1	164.41	5.9	134.80	-5.9
12	123.39	0.9	102.86	-2.0	127.00	4.2	151.83	3.3	158.92	-3.3	136.10	1.0
Annual average	121.48		104.91		120.23		142.50		147.95		135.60	
2024:												
1	127.15	3.0	109.51	6.5	125.64	-1.1	142.66	-6.0	173.68	9.3	143.18	5.2
2	125.32	-1.4	107.07	-2.2	129.73	3.3	142.17	-0.3	159.83	-8.0	137.75	-3.8
3	123.42	-1.5	108.64	1.5	122.90	-5.3	143.34	0.8	167.27	4.7	134.22	-2.6
4	133.05	7.8	121.60	11.9	127.91	4.1	148.92	3.9	167.45	0.1	144.94	8.0
5	128.67	-3.3	117.18	-3.6	121.88	-4.7	139.78	-6.1	157.71	-5.8	143.43	-1.0
6	130.46	1.4	125.35	7.0	121.29	-0.5	141.85	1.5	148.45	-5.9	139.83	-2.5

- Notes:
1. The indices are rounded up to two decimal digits when published and percentage changes up to one decimal digit when published.
 2. The whole time-series with seasonally adjusted indices is recalculated every time a new observation is added in the time-series.

METHODOLOGICAL NOTES

Generally	The Industrial Production Index (IPI) in Greece has been compiled by the Hellenic Statistical Authority (ELSTAT) from 1959 onwards.
Purpose of the index	The objective of the index is to compare the magnitude (volume) of the output in the current month in the mining and quarrying, manufacturing, electricity and water supply divisions with the corresponding output of a given fixed period, which is considered as base period. The Industrial Production Index shows the evolution of the value added of the production factors cost, at constant prices.
Legal framework	The compilation of the IPI is based on the framework of the implementation of Council Regulation (EC) No 1165/1998 concerning short-term statistics (STS-R). Furthermore, the IPI is governed by Regulation (EC) No 1893/2006 of the European Parliament and of the Council, by Commission Regulation (EC) No 656/2007, by Council Regulation (EC) No 451/2008, by Regulation (EU) No 2019/2152 of the European Parliament and of the Council on European business statistics, as well as Commission Implementing Regulation (EU) No 2020/1197 laying down technical specifications and arrangements pursuant to Regulation (EU) No 2019/2152.
Reference period	Month.
Base year	2015=100.0.
Revision	The IPI is a fixed base index. The Industrial Production Index was currently revised with new base year 2015 (2015=100.0) according to the provisions of Council Regulation No 1165/1998 concerning short-term statistics. Short-term indices are revised every five (5) years, particularly in calendar years ending in 0 or 5.
Statistical classifications	At the level of branches of economic activities, the statistical classification of economic activities NACE Rev.2 of EU was used (Regulation No 1893/2006), while at the level of main industrial groupings, the allocation of two-digit and three-digit NACE Rev. 2 headings to categories of aggregate classification was used, in accordance with Council Regulation No 656/2007. At product level, the statistical classification CPA 2008 of EU was used, according to Council Regulation No 451/2008.
Geographical coverage	The index covers the whole Country.
Coverage of economic activities	The index covers all the sections of industry, the main industrial groups, as well as all levels of economic activity.
Statistical survey	The data are collected from a sample of 1,263 enterprises. The survey covers 325 products and the measurement of the surveyed products is made in terms of output quantities or in terms of production value or turnover, according to the specific features in each branch of economic activity.
Seasonal adjustment	Seasonal adjustment is the procedure followed to remove the impact of seasonality on the time-series (i.e. the impact of monthly effects, e.g. holidays, tourist period etc.), in order to improve comparability over time. The method applied is TRAMO-SEATS with the use of JDemetra+ 2.0.0. For the seasonal adjustment of the Industrial Production Index at 2-digit level of NACE Rev.2, at section level (B – Mining and Quarrying, C – Manufacturing, D – Electricity and E – Water Supply) and for the Main Industrial Groupings (MIGs), the direct approach is applied, namely each time-series is seasonally adjusted independently. For the overall Industrial Production Index, the indirect approach is applied, with the seasonally adjusted IPI being computed by aggregating the seasonally adjusted MIGs using appropriate weights.
Publication of data	The revised IPI with the new base year 2015 (2015=100.0) is released since July 2019, with May 2019 as the first reference month. Data with base year 2015=100.0 are available from January 2000 onwards.
References	More information about the methodology concerning the compilation and calculation of the index and the time series are available on the website of the Hellenic Statistical Authority (ELSTAT) (http://www.statistics.gr/en/statistics/-/publication/DKT21/-).