



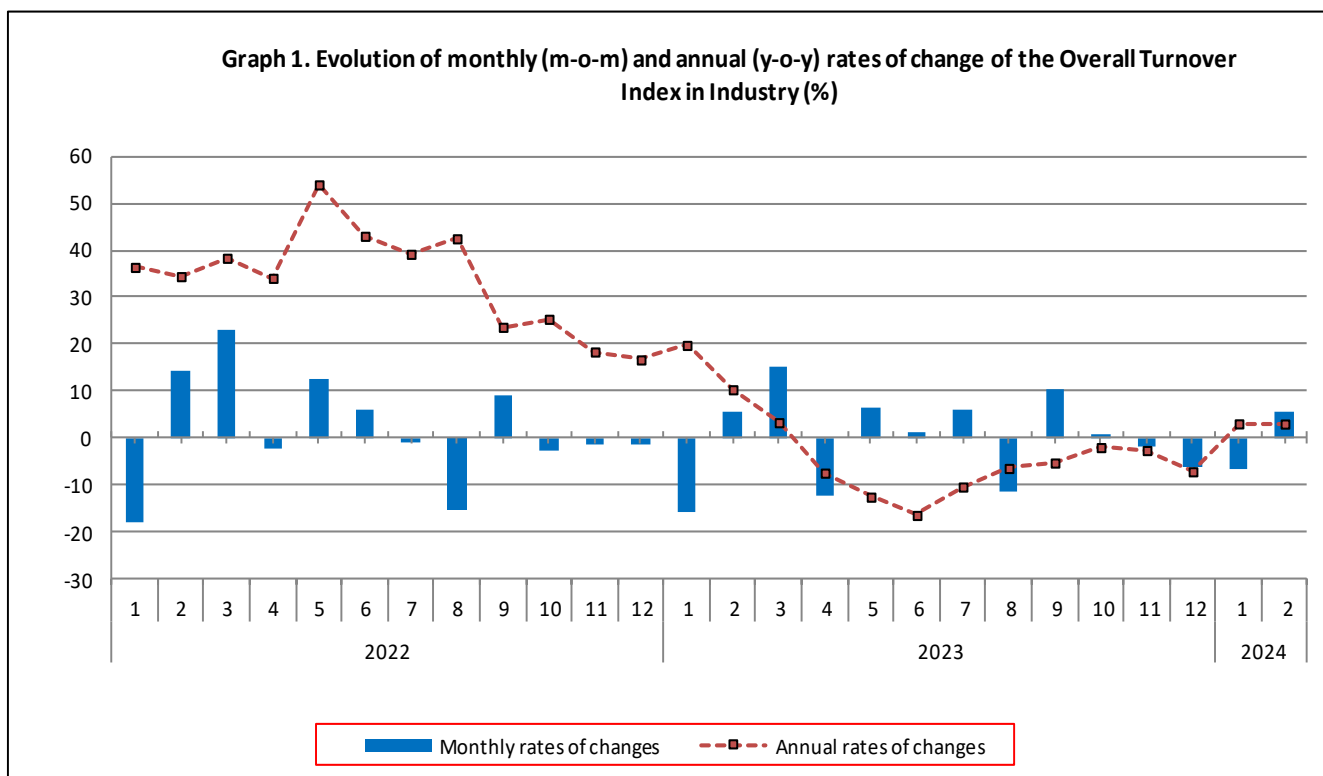
TURNOVER INDEX IN INDUSTRY: February 2024, y-o-y increase of 3.1%

The Hellenic Statistical Authority announces the Turnover Index in Industry with base year 2015=100.0 for February 2024, the evolution of which on the basis of provisional data, is as follows:

The Overall Turnover Index in Industry (both Domestic and Non-Domestic Market) in February 2024 recorded an increase of 3.1% compared with the corresponding index of February 2023. The Overall Turnover Index in Industry in February 2023 increased by 10.4% compared with the corresponding index in February 2022 (Table 1).

The Overall Turnover Index in Industry in February 2024, compared with January 2024, recorded an increase of 5.4% (Table 6).

The average Overall Turnover Index in Industry for the 12-month period from March 2023 to February 2024 decreased by 5.5%, compared with the corresponding index of the 12-month period from March 2022 to February 2023. The average Overall Turnover Index in Industry for the 12-month period from March 2022 to February 2023 increased by 29.9% compared with the corresponding index of the 12-month period from March 2021 to February 2022 (Table 13).



Information on methodological issues:

Division of Business Statistics
Section of Manufacture-Construction Indices and Industrial Products
Head of the Section : Diamantaki Aikaterini
Tel: +30 213 135 2056
E-mail: a.diamantaki@statistics.gr

Information on data provision:

Tel: +30 213 135 2022, 2308, 2310
E-mail: data.dissem@statistics.gr

Evolution of the Overall Turnover Index in Industry in February 2024

I. Annual changes of the Overall Turnover Index in Industry: February 2024 / February 2023

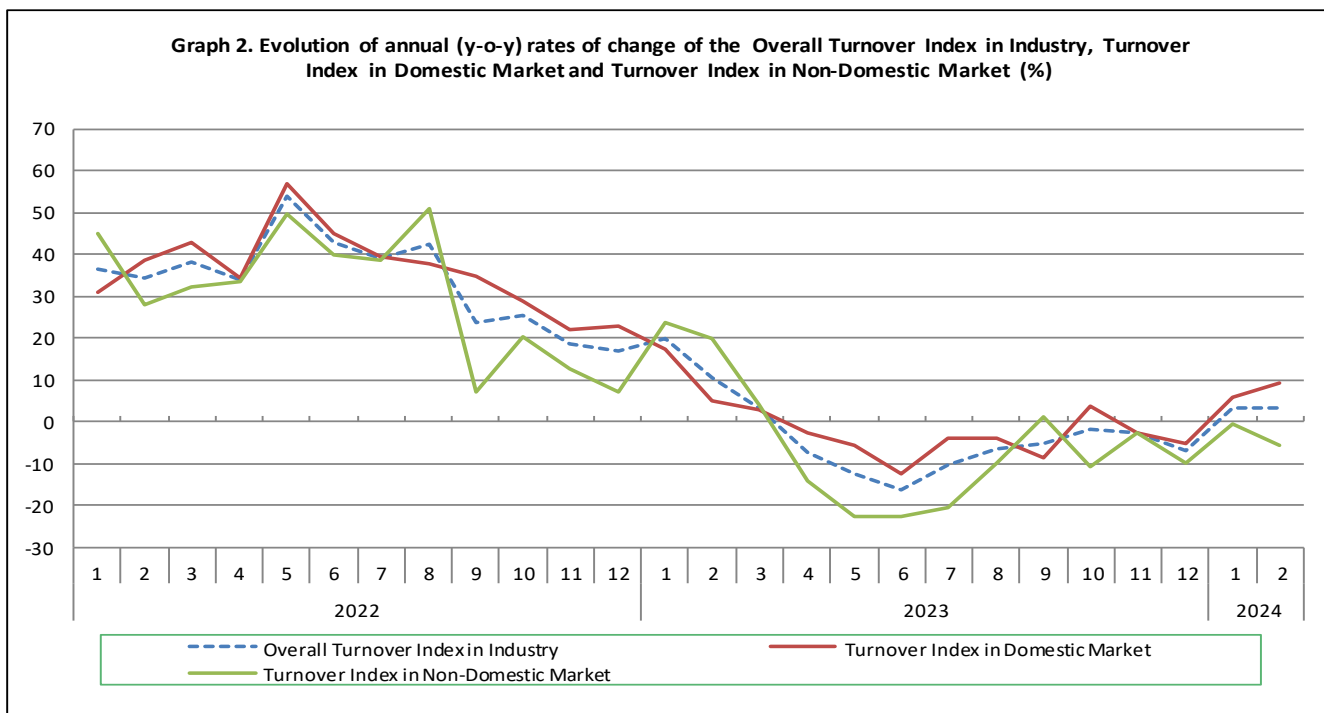
The 3.1% increase in the Overall Turnover Index in Industry in February 2024, compared with the corresponding index in February 2023, was due to the following:

1. Changes in the sub-indices of the industrial sections (Table 1):

- The Turnover Index in Mining and quarrying increased by 31.2%. The increase was mainly the result of the annual changes of the sub-indices in the following 2-digit divisions: mining of coal and lignite - extraction of crude petroleum and natural gas - mining support service activities, mining of metal ores.
- The Turnover Index in Manufacturing increased by 2.8%. The increase was mainly the result of the annual changes of the sub-indices in the following 2-digit divisions: printing and reproduction of recorded products, other non-metallic mineral products, electrical equipment, beverages.

2. Changes in the sub-indices in Domestic and Non-Domestic Markets:

- The Turnover Index in Industry in Domestic Market increased by 9.2% (Table 2).
- The Turnover Index in Industry in Non-Domestic Market decreased by 5.9% (Table 3).



II. Annual changes of the Turnover Index in Industry in Domestic Market: February 2024 / February 2023

The 9.2% increase of the Turnover Index in Industry in Domestic Market in February 2024, compared with February 2023, is due to the annual changes in the sub-indices of the following industrial sections (Table 2):

- The Turnover Index in Mining and quarrying increased by 28.7%. The increase was the result of the annual changes of the sub-indices in the following 2-digit divisions: other mining and quarrying products, mining of metal ores.
- The Turnover Index in Manufacturing increased by 9.0%. The increase was mainly the result of the annual changes of the sub-indices in the following 2-digit divisions: electrical equipment, other non-metallic mineral products, printing and reproduction of recorded products, fabricated metal products, except machinery and equipment.

III. Annual changes of the Turnover Index in Industry in Non-Domestic Market: February 2024 / February 2023

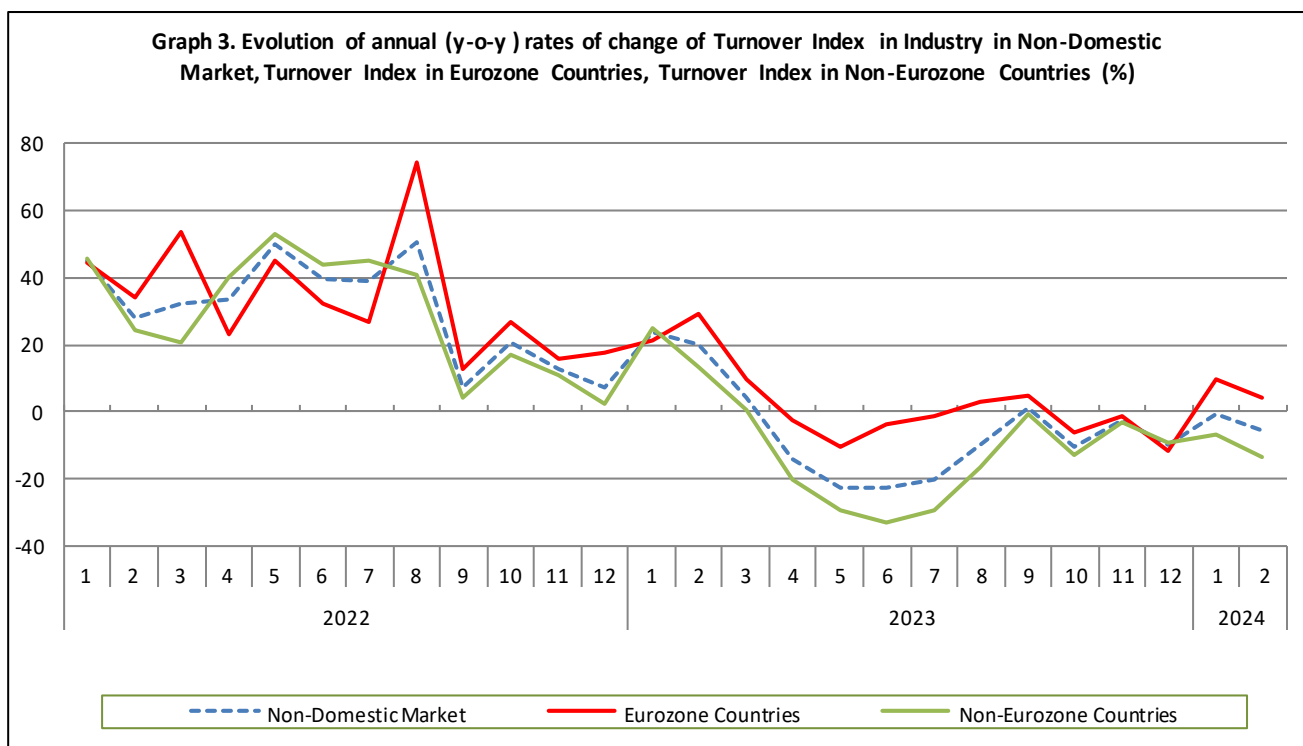
The 5.9% decrease of the Turnover Index in Industry in Non-Domestic Market in February 2024, compared with February 2023, was due to the following:

1. Changes in the sub-indices of the industrial sections (Table 3):

- The Turnover Index in Manufacturing decreased by 6.5%. The decrease was mainly the result of the annual changes of the sub-indices in the following 2-digit divisions: tobacco products, coke and refined petroleum products, wearing apparel, basic pharmaceutical products and pharmaceutical preparations.
- The Turnover Index in Mining and quarrying increased by 32.9%. The increase was the result of the annual changes of the sub-indices in the following 2-digit divisions: mining of coal and lignite - extraction of crude petroleum and natural gas - mining support service activities, mining of metal ores.

2. Changes in the sub-indices in Eurozone and Non-Eurozone countries:

- The Turnover Index in Industry in Non-Eurozone countries decreased by 13.6% (Table 5).
- The Turnover Index in Industry in Eurozone countries increased by 4.3% (Table 4).



IV. Monthly changes of the Overall Turnover Index in Industry: February 2024 / January 2024

The 5.4% increase of the Overall Turnover Index in Industry in February 2024, compared with the corresponding index in January 2024, was due to the following:

1. Changes in the sub-indices of industrial sections (Table 6):

- The Turnover Index in Mining and quarrying increased by 78.8%.
- The Turnover Index in Manufacturing increased by 4.8%.

2. Changes in the sub-indices in Domestic and Non-Domestic Market:

- The Turnover Index in Industry in Domestic Market increased by 12.2% (Table 7).
- The Turnover Index in Industry in Non-Domestic Market decreased by 4.4% (Table 8).

Table 1. Annual rates of change of the Turnover Index in Industry: Total Market

Base year: 2015=100.0

Code	Division	Weights	February			Rate of change (%)	
			2024*	2023*	2022	2024/2023	2023/2022
OVERALL INDEX			154.72	150.12	136.02	3.1	10.4
B	MINING AND QUARRYING	100.00	153.18	116.77	96.01	31.2	21.6
05-06-09	Mining of coal and lignite - Extraction of crude petroleum and natural gas - Mining support service activities	21.19	129.32	39.44	18.61	227.9	111.9
07	Mining of metal ores	17.56	226.00	147.05	168.50	53.7	-12.7
08	Other mining and quarrying products	61.25	140.55	134.84	102.00	4.2	32.2
C	MANUFACTURING	100.00	154.74	150.57	136.56	2.8	10.3
10	Food	23.39	142.81	132.07	119.45	8.1	10.6
11	Beverages	3.57	115.75	96.79	92.92	19.6	4.2
12	Tobacco products	1.19	172.17	224.98	130.85	-23.5	71.9
13	Textiles	1.28	121.49	123.00	121.76	-1.2	1.0
14	Wearing apparel	1.80	89.48	91.67	81.91	-2.4	11.9
15	Leather and related products	0.34	68.81	76.27	60.79	-9.8	25.5
16	Wood and products of wood and cork, except furniture	0.72	142.28	125.28	116.04	13.6	8.0
17	Paper and paper products	2.44	138.63	144.17	137.56	-3.8	4.8
18	Printing and reproduction of recorded products	1.17	124.25	91.66	110.90	35.5	-17.3
19	Coke and refined petroleum products	28.73	157.29	170.92	132.72	-8.0	28.8
20	Chemicals and chemical products	4.43	168.10	152.71	163.65	10.1	-6.7
21	Basic pharmaceutical products and pharmaceutical preparations	3.67	242.80	241.39	187.22	0.6	28.9
22	Rubber and plastic products	3.47	144.35	132.27	151.23	9.1	-12.5
23	Other non-metallic mineral products	3.31	179.00	136.06	127.27	31.6	6.9
24	Basic metals	7.19	188.70	185.85	220.49	1.5	-15.7
25	Fabricated metal products, except machinery and equipment	4.51	131.64	114.09	121.35	15.4	-6.0
26	Computers, electronic and optical products	0.78	278.47	248.83	175.28	11.9	42.0
27	Electrical equipment	2.65	204.94	160.13	184.61	28.0	-13.3
28	Machinery and equipment n.e.c.	1.56	128.01	136.99	128.30	-6.6	6.8
29	Motor vehicles, trailers and semi-trailers	0.23	103.77	185.60	123.58	-44.1	50.2
30	Other transport equipment	0.52	79.11	45.40	55.84	74.2	-18.7
31	Furniture	0.97	134.71	117.17	117.01	15.0	0.1
32	Other manufacturing	0.66	125.04	112.46	102.20	11.2	10.0
33	Repair and installation of machinery and equipment	1.42	107.99	96.73	93.69	11.6	3.2
MAIN INDUSTRIAL GROUPINGS							
1	Energy	28.57	157.35	169.99	131.87	-7.4	28.9
2	Intermediate goods	28.29	165.10	151.85	163.17	8.7	-6.9
3	Capital goods	7.00	128.63	123.22	115.16	4.4	7.0
4	Consumer Durables	1.86	148.99	123.26	109.48	20.9	12.6
5	Consumer Non-Durables	34.28	149.60	139.07	122.76	7.6	13.3

* Provisional data

Note: The indices and the percentage changes are rounded up to two and one decimal digits, respectively, when published.

Table 2. Annual rates of change of the Turnover Index in Industry: Domestic Market

Base year: 2015=100.0

Code	Division	Weights	February			Rate of change (%)	
			2024*	2023*	2022	2024/2023	2023/2022
OVERALL INDEX			147.06	134.72	128.61	9.2	4.7
B	MINING AND QUARRYING	100.00	109.13	84.78	71.56	28.7	18.5
05-06-09	Mining of coal and lignite - Extraction of crude petroleum and natural gas - Mining support service activities	31.66	6.80	45.61	22.00	-85.1	107.3
07	Mining of metal ores	12.83	95.77	75.32	98.33	27.2	-23.4
08	Other mining and quarrying products	55.50	170.59	109.31	93.63	56.1	16.7
C	MANUFACTURING	100.00	147.50	135.30	129.27	9.0	4.7
10	Food	28.50	129.16	119.29	110.08	8.3	8.4
11	Beverages	4.86	109.87	94.99	87.41	15.7	8.7
12	Tobacco products	0.51	273.52	230.54	199.72	18.6	15.4
13	Textiles	1.11	100.92	88.90	101.81	13.5	-12.7
14	Wearing apparel	1.77	88.51	85.41	71.26	3.6	19.8
15	Leather and related products	0.41	68.34	79.25	65.52	-13.8	21.0
16	Wood and products of wood and cork, except furniture	0.96	132.92	114.55	107.74	16.0	6.3
17	Paper and paper products	3.12	132.98	137.59	131.16	-3.4	4.9
18	Printing and reproduction of recorded products	1.63	103.60	81.83	87.46	26.6	-6.4
19	Coke and refined petroleum products	24.90	149.96	148.73	131.33	0.8	13.3
20	Chemicals and chemical products	4.90	157.62	149.08	156.33	5.7	-4.6
21	Basic pharmaceutical products and pharmaceutical preparations	3.85	225.78	209.47	196.75	7.8	6.5
22	Rubber and plastic products	3.31	141.39	129.44	144.69	9.2	-10.5
23	Other non-metallic mineral products	3.31	209.06	150.41	140.32	39.0	7.2
24	Basic metals	3.49	232.08	209.87	266.97	10.6	-21.4
25	Fabricated metal products, except machinery and equipment	4.25	154.55	129.98	137.12	18.9	-5.2
26	Computers, electronic and optical products	0.40	256.10	162.76	99.84	57.4	63.0
27	Electrical equipment	2.24	241.15	164.86	173.57	46.3	-5.0
28	Machinery and equipment n.e.c.	1.46	131.58	138.57	127.64	-5.0	8.6
29	Motor vehicles, trailers and semi-trailers	0.27	94.61	203.30	123.25	-53.5	64.9
30	Other transport equipment	0.58	45.98	33.39	43.28	37.7	-22.9
31	Furniture	1.35	128.06	106.49	107.97	20.3	-1.4
32	Other manufacturing	0.88	121.57	106.76	96.55	13.9	10.6
33	Repair and installation of machinery and equipment	1.92	111.33	99.88	95.44	11.5	4.7
MAIN INDUSTRIAL GROUPINGS							
1	Energy	24.89	148.44	147.80	130.24	0.4	13.5
2	Intermediate goods	25.73	170.84	147.24	156.66	16.0	-6.0
3	Capital goods	7.19	132.16	123.20	115.08	7.3	7.1
4	Consumer Durables	2.31	119.66	104.94	102.27	14.0	2.6
5	Consumer Non-Durables	39.88	135.13	122.28	113.47	10.5	7.8

* Provisional data

Note: The indices and the percentage changes are rounded up to two and one decimal digits, respectively, when published.

Table 3. Annual rates of change of the Turnover Index in Industry: Non-Domestic Market

Base year: 2015=100.0

Code	Division	Weights	February			Rate of change (%)	
			2024*	2023*	2022	2024/2023	2023/2022
OVERALL INDEX			169.82	180.45	150.60	-5.9	19.8
B	MINING AND QUARRYING	100.00	210.66	158.50	127.93	32.9	23.9
05-06-09	Mining of coal and lignite - Extraction of crude petroleum and natural gas - Mining support service activities	7.53	801.86	5.57	0.00	14300.4	-
07	Mining of metal ores	23.74	317.90	197.66	218.01	60.8	-9.3
08	Other mining and quarrying products	68.74	108.90	161.73	110.83	-32.7	45.9
C MANUFACTURING		100.00	169.11	180.83	151.00	-6.5	19.8
10	Food	13.27	200.92	186.48	159.36	7.7	17.0
11	Beverages	1.01	171.85	113.95	145.51	50.8	-21.7
12	Tobacco products	2.53	131.30	222.74	103.08	-41.0	116.1
13	Textiles	1.61	149.71	169.79	149.15	-11.8	13.8
14	Wearing apparel	1.86	91.31	103.46	101.98	-11.7	1.5
15	Leather and related products	0.19	70.87	63.46	40.45	11.7	56.9
16	Wood and products of wood and cork, except furniture	0.24	216.54	210.46	181.89	2.9	15.7
17	Paper and paper products	1.11	170.05	180.76	173.13	-5.9	4.4
18	Printing and reproduction of recorded products	0.26	381.38	214.13	402.83	78.1	-46.8
19	Coke and refined petroleum products	36.32	167.25	201.07	134.60	-16.8	49.4
20	Chemicals and chemical products	3.50	197.14	162.76	183.91	21.1	-11.5
21	Basic pharmaceutical products and pharmaceutical preparations	3.30	282.11	315.15	165.18	-10.5	90.8
22	Rubber and plastic products	3.79	149.49	137.18	162.57	9.0	-15.6
23	Other non-metallic mineral products	3.31	119.39	107.60	101.40	11.0	6.1
24	Basic metals	14.54	168.07	174.43	198.38	-3.6	-12.1
25	Fabricated metal products, except machinery and equipment	5.03	93.25	87.47	94.94	6.6	-7.9
26	Computers, electronic and optical products	1.52	290.11	293.61	214.53	-1.2	36.9
27	Electrical equipment	3.44	158.16	154.02	198.87	2.7	-22.6
28	Machinery and equipment n.e.c.	1.76	122.15	134.40	129.39	-9.1	3.9
29	Motor vehicles, trailers and semi-trailers	0.14	139.44	116.71	124.87	19.5	-6.5
30	Other transport equipment	0.40	173.53	79.63	91.62	117.9	-13.1
31	Furniture	0.21	219.40	253.16	232.14	-13.3	9.1
32	Other manufacturing	0.22	151.92	156.65	145.97	-3.0	7.3
33	Repair and installation of machinery and equipment	0.43	78.58	69.06	78.27	13.8	-11.8
MAIN INDUSTRIAL GROUPINGS							
1	Energy	35.82	169.55	200.37	134.11	-15.4	49.4
2	Intermediate goods	33.33	156.38	158.86	173.07	-1.6	-8.2
3	Capital goods	6.62	121.09	123.29	115.33	-1.8	6.9
4	Consumer Durables	0.98	285.54	208.51	143.05	36.9	45.8
5	Consumer Non-Durables	23.25	198.53	195.80	154.15	1.4	27.0

* Provisional data

Note: The indices and the percentage changes are rounded up to two and one decimal digits, respectively, when published.

Table 4. Annual rates of change of the Turnover Index in Industry: Eurozone Countries

Base year: 2015=100.0

Code	Sections and main groupings	February			Rate of change (%)	
		2024*	2023*	2022	2024/2023	2023/2022
OVERALL INDEX		233.71	224.14	173.49	4.3	29.2
INDUSTRIAL SECTIONS						
B	MINING AND QUARRYING	343.10	134.25	150.94	155.6	-11.1
C	MANUFACTURING	231.51	225.95	173.95	2.5	29.9
MAIN INDUSTRIAL GROUPINGS						
1	Energy	348.00	322.78	162.83	7.8	98.2
2	Intermediate goods	175.92	179.68	188.91	-2.1	-4.9
3	Capital goods	165.88	140.99	130.83	17.7	7.8
4	Consumer Durables	461.90	321.08	211.51	43.9	51.8
5	Consumer Non-Durables	222.09	215.00	168.17	3.3	27.8

* Provisional data

Table 5. Annual rates of change of the Turnover Index in Industry: Non-Eurozone Countries

Base year: 2015=100.0

Code	Sections and main groupings	February			Rate of change (%)	
		2024*	2023*	2022	2024/2023	2023/2022
OVERALL INDEX		135.87	157.22	138.43	-13.6	13.6
INDUSTRIAL SECTIONS						
B	MINING AND QUARRYING	123.73	174.43	112.82	-29.1	54.6
C	MANUFACTURING	136.06	156.94	138.84	-13.3	13.0
MAIN INDUSTRIAL GROUPINGS						
1	Energy	118.15	165.11	125.84	-28.4	31.2
2	Intermediate goods	143.64	145.29	162.74	-1.1	-10.7
3	Capital goods	105.91	117.28	110.08	-9.7	6.5
4	Consumer Durables	163.76	130.78	95.76	25.2	36.6
5	Consumer Non-Durables	175.61	177.11	140.51	-0.8	26.0

* Provisional data

Note: The indices and the percentage changes are rounded up to two and one decimal digits, respectively, when published.

Table 6. Monthly rate of change of the Turnover Index in Industry: Total Market

Base year: 2015=100.0

Code	Sections and main groupings	February 2024*	January 2024**	Rate of change (%) Feb. 2024 / Jan. 2024
OVERALL INDEX		154.72	146.76	5.4
INDUSTRIAL SECTIONS				
B	MINING AND QUARRYING	153.18	85.66	78.8
C	MANUFACTURING	154.74	147.59	4.8
MAIN INDUSTRIAL GROUPINGS				
1	Energy	157.35	159.90	-1.6
2	Intermediate goods	165.10	143.96	14.7
3	Capital goods	128.63	105.98	21.4
4	Consumer Durables	148.99	132.36	12.6
5	Consumer Non-Durables	149.60	147.25	1.6

Table 7. Monthly rate of change of the Turnover Index in Industry: Domestic Market

Base year: 2015=100.0

Code	Sections and main groupings	February 2024*	January 2024**	Rate of change (%) Feb. 2024 / Jan. 2024
OVERALL INDEX		147.06	131.05	12.2
INDUSTRIAL SECTIONS				
B	MINING AND QUARRYING	109.13	90.36	20.8
C	MANUFACTURING	147.50	131.52	12.1
MAIN INDUSTRIAL GROUPINGS				
1	Energy	148.44	123.56	20.1
2	Intermediate goods	170.84	144.54	18.2
3	Capital goods	132.16	116.50	13.4
4	Consumer Durables	119.66	102.02	17.3
5	Consumer Non-Durables	135.13	131.34	2.9

Table 8. Monthly rate of change of the Turnover Index in Industry: Non-Domestic Market

Base year: 2015=100.0

Code	Sections and main groupings	February 2024*	January 2024**	Rate of change (%) Feb. 2024 / Jan. 2024
OVERALL INDEX		169.82	177.72	-4.4
INDUSTRIAL SECTIONS				
B	MINING AND QUARRYING	210.66	79.54	164.9
C	MANUFACTURING	169.11	179.44	-5.8
MAIN INDUSTRIAL GROUPINGS				
1	Energy	169.55	209.63	-19.1
2	Intermediate goods	156.38	143.07	9.3
3	Capital goods	121.09	83.49	45.0
4	Consumer Durables	285.54	273.56	4.4
5	Consumer Non-Durables	198.53	201.02	-1.2

* Provisional data ** Revised data

Note: The indices and the percentage changes are rounded up to two and one decimal digits, respectively, when published.

Table 9. Monthly rate of change of the Turnover Index in Industry: Eurozone Countries

Base year: 2015=100.0

Code	Sections and main groupings	February 2024*	January 2024**	Rate of change (%) Feb. 2024 / Jan. 2024
OVERALL INDEX		233.71	208.52	12.1
INDUSTRIAL SECTIONS				
B	MINING AND QUARRYING	343.10	34.76	887.1
C	MANUFACTURING	231.51	212.01	9.2
MAIN INDUSTRIAL GROUPINGS				
1	Energy	348.00	260.77	33.5
2	Intermediate goods	175.92	162.79	8.1
3	Capital goods	165.88	130.54	27.1
4	Consumer Durables	461.90	482.90	-4.3
5	Consumer Non-Durables	222.09	226.31	-1.9

* Provisional data ** Revised data

Table 10. Monthly rate of change of the Turnover Index in Industry: Non-Eurozone Countries

Base year: 2015=100.0

Code	Sections and main groupings	February 2024*	January 2024**	Rate of change (%) Feb. 2024 / Jan. 2024
OVERALL INDEX		135.87	161.34	-15.8
INDUSTRIAL SECTIONS				
B	MINING AND QUARRYING	123.73	108.93	13.6
C	MANUFACTURING	136.06	162.19	-16.1
MAIN INDUSTRIAL GROUPINGS				
1	Energy	118.15	194.90	-39.4
2	Intermediate goods	143.64	130.21	10.3
3	Capital goods	105.91	67.55	56.8
4	Consumer Durables	163.76	128.99	27.0
5	Consumer Non-Durables	175.61	176.41	-0.5

* Provisional data ** Revised data

Note: The indices and the percentage changes are rounded up to two and one decimal digits, respectively, when published.

Table 11. Evolution of the Turnover Index in Industry (y-o-y changes): Total Market

Base year: 2015=100.0

Year and month	Overall Index (Total Market)		Turnover Index in Industry in Domestic Market		Turnover Index in Industry in Non-Domestic Market	
	Index	Annual rate of change (%)	Index	Annual rate of change (%)	Index	Annual rate of change (%)
2023*:						
2	150.12	10.4	134.72	4.7	180.45	19.8
3	172.73	3.4	156.93	2.8	203.86	4.2
4	151.46	-7.4	145.26	-2.9	163.68	-14.3
5	161.08	-12.5	156.63	-5.7	169.85	-22.6
6	163.38	-16.4	162.13	-12.6	165.84	-22.9
7	173.48	-10.3	171.99	-4.0	176.42	-20.4
8	153.95	-6.4	146.93	-4.2	167.78	-10.0
9	169.65	-5.2	162.08	-8.6	184.55	1.1
10	170.88	-1.9	167.88	3.5	176.80	-10.7
11	167.40	-2.6	158.44	-2.5	185.04	-2.6
12	157.11	-7.1	154.80	-5.4	161.67	-10.1
2024*:						
1	146.76	3.1	131.05	5.8	177.72	-0.6
2	154.72	3.1	147.06	9.2	169.82	-5.9

*Provisional data

Table 12. Evolution of the Turnover Index in Industry (y-o-y changes): Non-Domestic Market

Base year: 2015=100.0

Year and month	Overall Index (Non-Domestic Market)		Turnover Index in Industry in Eurozone Countries		Turnover Index in Industry in Non-Eurozone Countries	
	Index	Annual rate of change (%)	Index	Annual rate of change (%)	Index	Annual rate of change (%)
2023*:						
2	180.45	19.8	224.14	29.2	157.22	13.6
3	203.86	4.2	248.31	9.7	180.23	0.6
4	163.68	-14.3	186.34	-2.7	151.64	-20.5
5	169.85	-22.6	210.40	-10.5	148.30	-29.8
6	165.84	-22.9	210.60	-3.7	142.06	-33.3
7	176.42	-20.4	205.91	-1.4	160.74	-29.6
8	167.78	-10.0	192.58	3.1	154.60	-17.0
9	184.55	1.1	192.66	4.9	180.24	-0.9
10	176.80	-10.7	202.62	-6.3	163.07	-13.3
11	185.04	-2.6	195.90	-1.5	179.27	-3.2
12	161.67	-10.1	150.07	-11.9	167.83	-9.2
2024*:						
1	177.72	-0.6	208.52	9.7	161.34	-6.7
2	169.82	-5.9	233.71	4.3	135.87	-13.6

*Provisional data

Note: The indices and the percentage changes are rounded up to two and one decimal digits, respectively, when published.

Table 13. Average indices and rates of change (%) of the 12-month periods of Turnover Index in Industry: Total Market
Base year: 2015=100.0

Code	Division	Average Indices of 12-month periods			Rate of change (%)	
		Mar. 2023*- Feb. 2024*	Mar. 2022- Feb. 2023*	Mar. 2021- Feb. 2022	2024/2023	2023/2022
OVERALL INDEX		161.88	171.23	131.82	-5.5	29.9
B	MINING AND QUARRYING	122.25	109.06	104.55	12.1	4.3
05-06-09	Mining of coal and lignite - Extraction of crude petroleum and natural gas - Mining support service activities	43.36	27.41	27.96	58.2	-2.0
07	Mining of metal ores	202.85	164.36	174.79	23.4	-6.0
08	Other mining and quarrying products	126.43	121.45	110.91	4.1	9.5
C	MANUFACTURING	162.42	172.07	132.19	-5.6	30.2
10	Food	146.28	139.47	115.89	4.9	20.4
11	Beverages	157.50	140.78	118.14	11.9	19.2
12	Tobacco products	217.76	196.34	146.50	10.9	34.0
13	Textiles	124.08	129.00	122.66	-3.8	5.2
14	Wearing apparel	88.26	94.34	85.81	-6.4	9.9
15	Leather and related products	89.45	82.06	73.55	9.0	11.6
16	Wood and products of wood and cork, except furniture	142.69	142.76	121.27	0.0	17.7
17	Paper and paper products	148.90	156.76	122.63	-5.0	27.8
18	Printing and reproduction of recorded products	119.31	116.90	101.11	2.1	15.6
19	Coke and refined petroleum products	167.13	205.68	129.15	-18.7	59.3
20	Chemicals and chemical products	162.49	185.01	147.17	-12.2	25.7
21	Basic pharmaceutical products and pharmaceutical preparations	251.04	220.44	187.94	13.9	17.3
22	Rubber and plastic products	147.06	151.98	138.10	-3.2	10.1
23	Other non-metallic mineral products	171.44	151.18	126.01	13.4	20.0
24	Basic metals	185.69	215.37	175.83	-13.8	22.5
25	Fabricated metal products, except machinery and equipment	142.34	137.11	126.88	3.8	8.1
26	Computers, electronic and optical products	253.30	253.69	192.35	-0.2	31.9
27	Electrical equipment	227.67	220.42	194.60	3.3	13.3
28	Machinery and equipment n.e.c.	138.22	141.69	126.91	-2.5	11.7
29	Motor vehicles, trailers and semi-trailers	183.45	177.03	138.39	3.6	27.9
30	Other transport equipment	92.14	86.57	83.76	6.4	3.3
31	Furniture	162.29	150.36	127.82	7.9	17.6
32	Other manufacturing	139.71	132.27	115.21	5.6	14.8
33	Repair and installation of machinery and equipment	135.36	119.46	104.08	13.3	14.8
MAIN INDUSTRIAL GROUPINGS						
1	Energy	166.26	204.35	128.42	-18.6	59.1
2	Intermediate goods	166.70	176.94	147.74	-5.8	19.8
3	Capital goods	147.17	141.44	126.02	4.0	12.2
4	Consumer Durables	170.16	153.25	122.07	11.0	25.5
5	Consumer Non-Durables	156.82	145.96	123.25	7.4	18.4

*Provisional data

Note: The indices and the percentage changes are rounded up to two and one decimal digits, respectively, when published.

METHODOLOGICAL NOTES

Generally	The Industrial Turnover Index is an indicator of an enterprise's business cycle showing the monthly evolution of the market of goods and services in industry. The first compilation of the Turnover Index was completed by the Hellenic Statistical Authority in 2006, with base year 2000=100.0 and is compiled from 2000 onwards.
Purpose of the index	The purpose of this index is to measure the monthly activity of the industrial sector in terms of value. Turnover comprises the totals invoiced by the observation units during the reference period and corresponds to the market sales of goods or services supplied to third parties. The purposes and the characteristics of the Turnover Index apply, as well, to the indices for the distinction between domestic and non-domestic turnover.
Legal Framework	The compilation and publication of the Turnover Index is based on the framework of the implementation of Council Regulation (EC) No 1165/1998 concerning short-term statistics (STS-R), as well as Regulation (EC) No 1158/2005 of the European Parliament and of the Council amending Council Regulation (EC) No 1165/1998. Furthermore, this index is governed by Regulation (EC) No 1893/2006 of the European Parliament and of the Council, by Commission Regulation (EC) No 656/2007, by Regulation (EC) No 451/2008 of the Council, by Regulation (EU) No 2019/2152 of the European Parliament and of the Council on European business statistics, as well as Commission Implementing Regulation (EU) No 2020/1197 laying down technical specifications and arrangements pursuant to Regulation (EU) No 2019/2152.
Reference period	Month.
Base year	2015=100.0.
Revision	The latest revision of the Turnover Index in Industry (base year 2015=100.0) took place in the framework of Council Regulation (EC) No 1165/1998 concerning short-term statistics. In accordance with this regulation the index is revised every five years, in years ending in 0 or 5.
Statistical classifications	At the level of classes of economic activities, the statistical classification of economic activities NACE Rev. 2 of EU was used (Regulation No 1893/2006), while at the level of main industrial groupings, the allocation of two-digit and three-digit NACE Rev. 2 headings to categories of aggregate classification was used, in accordance with Commission Regulation No 656/2007.
Geographical coverage	The index covers the whole Country.
Coverage of economic activities	The Turnover Index in Industry is compiled for all activities listed in Sections B (mining and quarrying) and C (manufacturing) of the NACE Rev. 2 statistical classification.
Computation of the Index	The Turnover Index in Industry is a fixed base index. This index is calculated at a first stage at the four-digit level of economic activity and subsequently, with the implementation of appropriate weighting coefficients, the index is calculated at higher levels (three-level and two-level of economic activity) as well as at the level of Main Industrial Groupings (MIGs).
Publication of data	The Turnover Index in Industry (2015=100.0) is released since August 2019 with June 2019 as first reference month. Data with base year 2015=100.0 are available from January 2000 onwards.
References	More information about the methodology concerning the compilation and calculation of the index and for the time series is available on the website of the Hellenic Statistical Authority (ELSTAT) (http://www.statistics.gr/en/statistics/-/publication/DKT24/).