

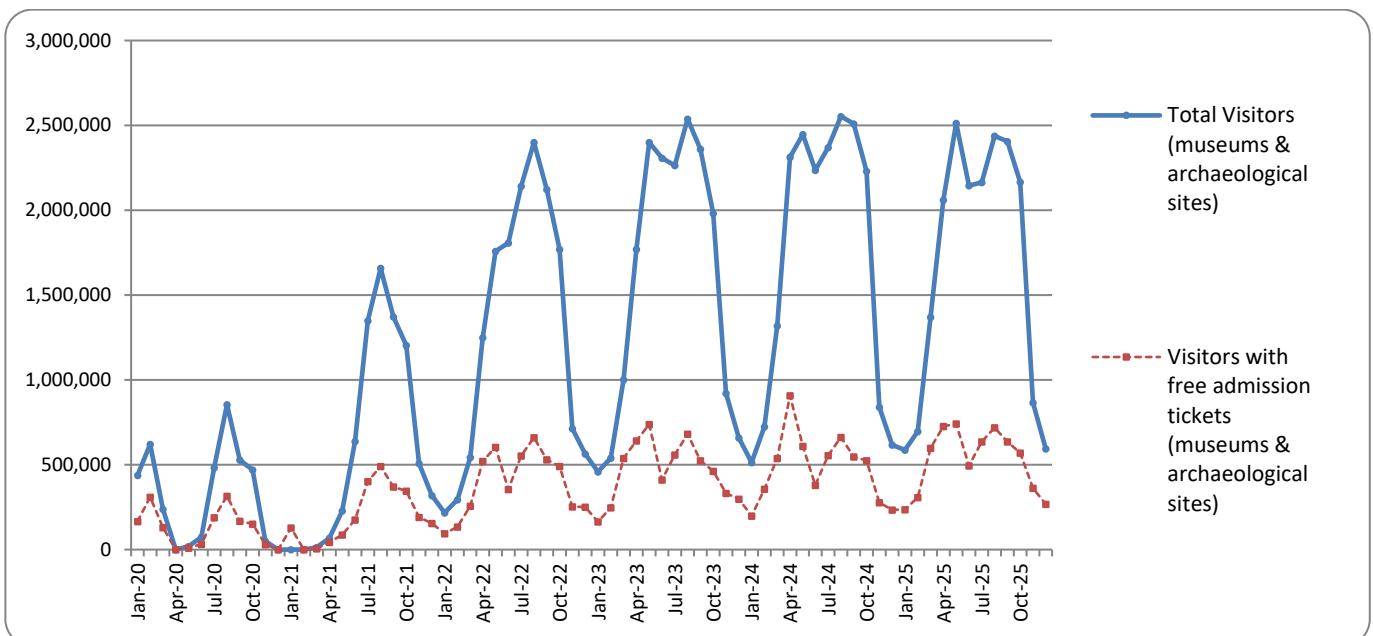


SURVEY ON MUSEUMS AND ARCHAEOLOGICAL SITES ATTENDANCE DECEMBER 2025

The Hellenic Statistical Authority (ELSTAT) announces the results of the *Survey on Museums and Archaeological Sites Attendance* for December 2025. More specifically:

- During December 2025 compared with the corresponding month of 2024, museums recorded an increase of 0.5% in the number of visitors, of 5.3% in the number of free admission visitors and of 37.7% in their receipts (Table 1).
- As regards archaeological sites, in December 2025 compared with the corresponding month of 2024, a decrease of 6.4% was recorded in the number of visitors, an increase of 24.7% in the number of free admission visitors and of 113.6% in the corresponding receipts (Table 1).
- During the twelve month period from January to December 2025, compared with the corresponding period of 2024, an increase of 0.4% was recorded in the number of visitors of museums, an increase of 10.4% in the number of free admission visitors and of 36.2% in the relevant receipts (Table 2).
- As regards archaeological sites, during the twelve month period from January to December 2025, compared with the corresponding period of 2024, a decrease of 4.9% was recorded in the number of visitors, an increase of 7.7% in the number of free admission visitors and of 44.6% was observed in the relevant receipts (Table 2).

Graph 1: Visitors of Museums and Archaeological sites (January 2020 – December 2025)



Information on methodological issues:

Sectoral Statistics Division
Tourism and Culture Statistics Section
Head of Section: Eleni Papadopoulou
Tel: +30 213 135 2168
e-mail: e.papadopoulou@statistics.gr

Information for data provision:

Tel. +30 213 135 2022, 2308, 2310
e-mail: data.dissem@statistics.gr

**TABLE 1: VISITORS OF MUSEUMS AND ARCHAEOLOGICAL SITES - TOTAL RECEIPTS
(DECEMBER 2024 & DECEMBER 2025)**

I. NUMBER OF VISITORS			
Museums and Archaeological sites	2024	2025	Change 2025/2024
Total number of visitors (A+B)	616,208	594,784	-3.5%
A. Museums (C+E)	260,649	261,883	0.5%
Acropolis Museum ⁽²⁾	80,568	79,575	-1.2%
National Archaeological	30,372	34,389	13.2%
Ancient Olympia ⁽³⁾	2,837	4,056	43.0%
Palace of the Grand Master (Rhodes) ⁽²⁾	4,629	4,768	3.0%
Heraklion Archaeological (Crete)	7,589	7,303	-3.8%
White Tower	17,743	21,466	21.0%
Delphi ⁽³⁾	14,442	13,802	-4.4%
Other museums ⁽³⁾	102,469	96,524	-5.8%
B. Archaeological Sites (D+F)	355,559	332,901	-6.4%
Epidavros	13,904	12,449	-10.5%
The Acropolis of Mycenae & Atreus' Treasure	15,146	13,563	-10.5%
The Acropolis of Athens	166,907	162,116	-2.9%
Sounio	14,488	13,958	-3.7%
The Acropolis of Lindos	1,093	1,616	47.8%
Royal Tombs of Vergina	11,643	8,726	-25.1%
Ancient Olympia ⁽¹⁾⁽³⁾	4,191	4,924	17.5%
Knossos (Crete)	8,576	8,430	-1.7%
Phaistos (Crete)	730	674	-7.7%
Ancient Korinthos	5,476	4,830	-11.8%
Mystras	4,101	3,213	-21.7%
Delphi ⁽³⁾	8,422	9,112	8.2%
Other archaeological sites	100,882	89,290	-11.5%
II. VISITORS WHO PAID TICKET			
	2024	2025	Change 2025/2024
Total number of visitors who paid ticket (C+D)	381,857	326,245	-14.6%
C. Museums ⁽²⁾	138,236	132,957	-3.8%
D. Archaeological sites	243,621	193,288	-20.7%
III. VISITORS WITH FREE ADMISSION TICKETS			
	2024	2025	Change 2025/2024
Total number of visitors with free admission ticket (E+F)	234,351	268,539	14.6%
E. Museums ⁽²⁾	122,413	128,926	5.3%
F. Archaeological sites	111,938	139,613	24.7%
IV. RECEIPTS (euros)			
	2024	2025	Change 2025/2024
Total Receipts (G+H)⁽⁴⁾	3,501,414	6,460,695	84.5%
G. Museums ⁽²⁾	1,341,932	1,847,388	37.7%
H. Archaeological sites	2,159,482	4,613,307	113.6%

⁽¹⁾ Flat rate ticket, valid both for the museum and the archaeological site.

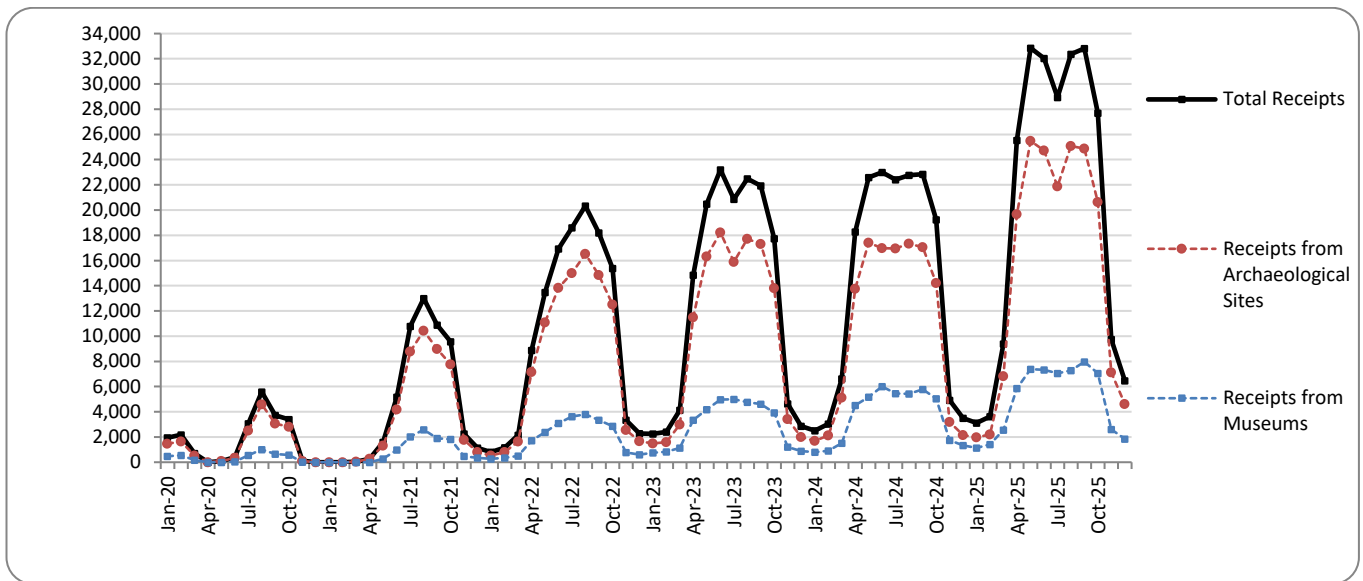
⁽²⁾ Revised data, due to the transmission of updated data from administrative sources.

⁽³⁾ Since April 2024, it has been possible to purchase tickets online from the museums of Ancient Olympia and Delphi, with the possibility of visiting the corresponding archaeological site, without it being possible to distinguish between museum and archaeological site visits.

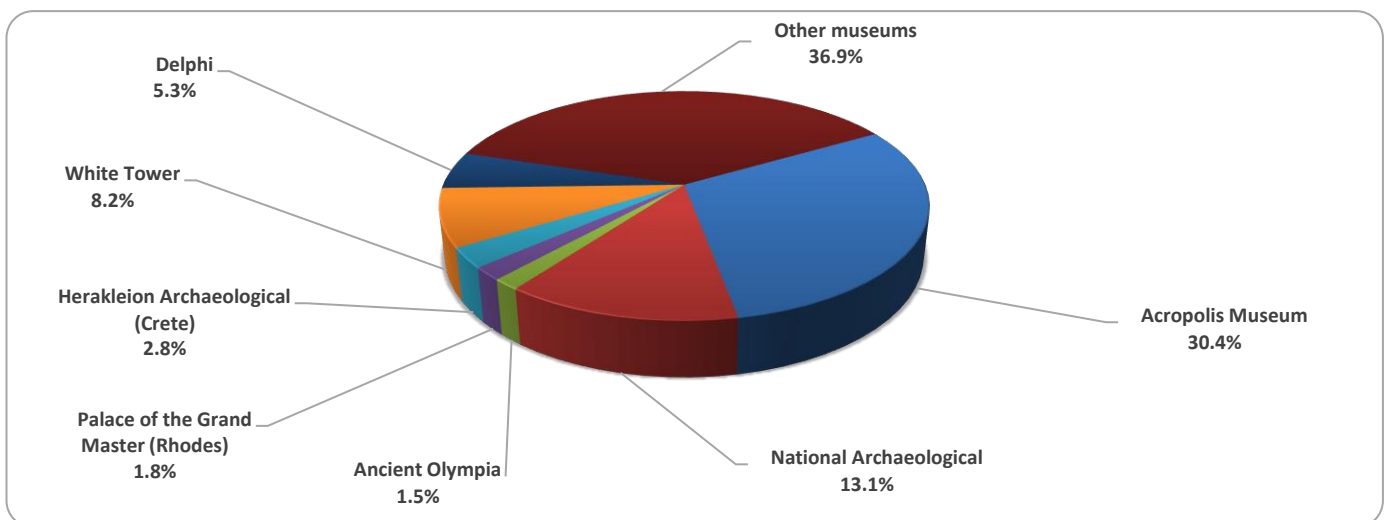
⁽⁴⁾ Pursuant to the provisions of Joint Ministerial Decision 117624 (Official Journal 1968/issue B/29-03-24), as of 01/04/2025 a new pricing policy to visits to museums and archaeological sites, is in force.

The following graphs depict the evolution of the receipts of Museums and Archaeological Sites (Graph 2), as well as the number of visitors by Museum (Graph 3) and by Archaeological Site (Graph 4).

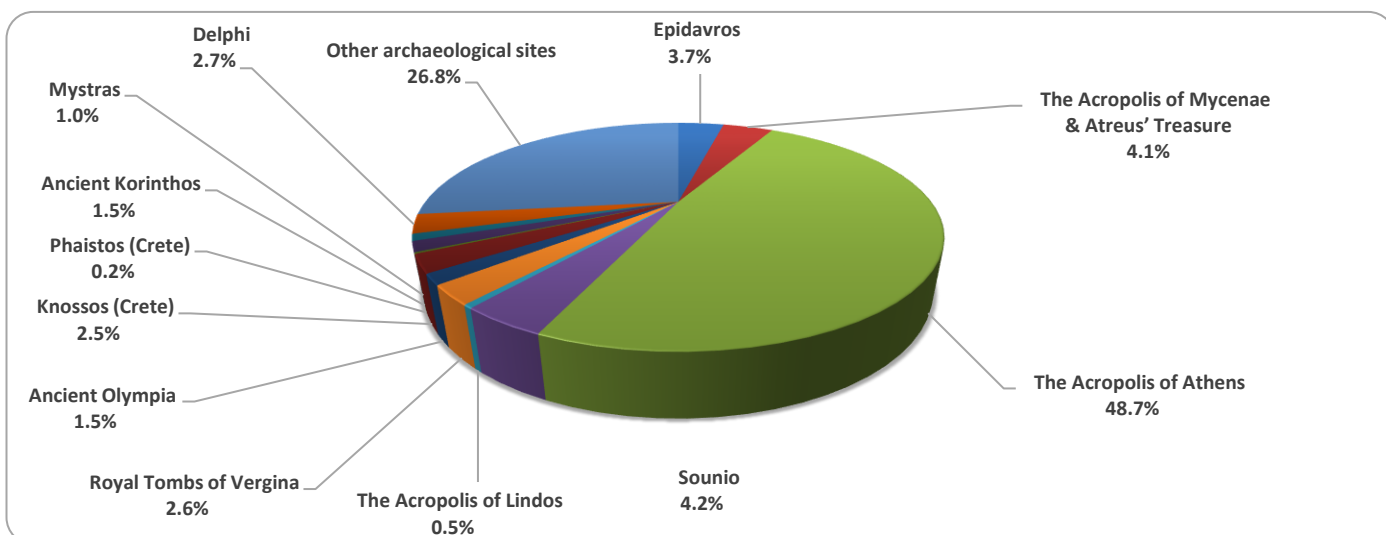
Graph 2: Receipts from Museums and Archaeological Sites (January 2020 – December 2025)
(in thousand euro)



Graph 3: Percentage distribution of visitors by Museum, December 2025



Graph 4: Percentage distribution of visitors by Archaeological site, December 2025



**TABLE 2: VISITORS OF MUSEUMS AND ARCHAEOLOGICAL SITES - TOTAL RECEIPTS
(2023, 2024, JANUARY - DECEMBER 2024, 2025)**

I. VISITORS				
Museums and Archaeological sites	2023	2024	2025	Change 2025/2024
Total number of visitors (A+B)	19,210,752	20,661,857	20,005,888	-3.2%
A. Museums (C+E)	5,801,812	6,651,911	6,678,026	0.4%
Acropolis Museum ⁽²⁾	1,900,950	1,994,279	1,994,050	0.0%
National Archaeological	642,318	642,956	665,414	3.5%
Ancient Olympia ⁽³⁾	85,410	286,519	301,459	5.2%
Palace of the Grand Master (Rhodes) ⁽²⁾	342,607	370,138	311,611	-15.8%
Herakleion Archaeological (Crete)	294,839	379,363	387,682	2.2%
White Tower	259,775	239,767	233,683	-2.5%
Delphi ⁽³⁾	203,445	445,188	463,159	4.0%
Other museums	2,072,468	2,293,701	2,320,968	1.2%
B. Archaeological Sites (D+F)	13,408,940	14,009,946	13,327,862	-4.9%
Epidavros ⁽¹⁾	525,982	548,971	525,113	-4.3%
The Acropolis of Mycenae & Atreus' Treasure	510,507	547,361	501,256	-8.4%
The Acropolis of Athens	3,958,405	4,557,693	4,609,113	1.1%
Sounio	393,927	421,556	382,650	-9.2%
The Acropolis of Lindos	629,089	702,363	595,625	-15.2%
Royal Tombs of Vergina	202,122	244,013	188,487	-22.8%
Ancient Olympia ⁽³⁾	481,211	301,987	276,674	-8.4%
Knossos (Crete)	959,110	1,010,006	977,299	-3.2%
Phaistos (Crete)	79,934	84,637	65,431	-22.7%
Ancient Korinthos ⁽¹⁾	210,465	253,085	254,270	0.5%
Mystras ⁽¹⁾	151,508	153,789	137,611	-10.5%
Delphi ⁽³⁾	482,293	292,619	216,389	-26.1%
Other archaeological sites	4,824,387	4,891,866	4,597,944	-6.0%
II. VISITORS WHO PAID TICKET				
	2023	2024	2025	Change 2025/2024
Total number of visitors who paid ticket (C+D)	13,614,885	14,869,864	13,708,488	-7.8%
C. Museums ⁽²⁾	3,690,912	4,489,213	4,289,702	-4.4%
D. Archaeological sites	9,923,973	10,380,651	9,418,786	-9.3%
III. VISITORS WITH FREE ADMISSION TICKETS				
	2023	2024	2025	Change 2025/2024
Total number of visitors with free admission ticket (E+F)	5,595,867	5,791,993	6,297,400	8.7%
E. Museums	2,110,900	2,162,698	2,388,324	10.4%
F. Archaeological sites	3,484,967	3,629,295	3,909,076	7.7%
IV. RECEIPTS (euros)				
	2023	2024	2025	Change 2025/2024
Total Receipts (G+H) ⁽⁴⁾	157,947,917	171,680,632	244,556,401	42.4%
G. Museums ⁽²⁾	35,712,861	43,688,040	59,481,491	36.2%
H. Archaeological sites	122,235,056	127,992,592	185,074,910	44.6%

⁽¹⁾ Until March 2025, a single ticket is valid for both the museum and the archaeological site.

⁽²⁾ Revised data, due to the transmission of updated data from administrative sources.

⁽³⁾ Since April 2024, it has been possible to purchase tickets online from the museums of Ancient Olympia and Delphi, with the possibility of visiting the corresponding archaeological site, without it being possible to distinguish between museum and archaeological site visits

⁽⁴⁾ Pursuant to the provisions of Joint Ministerial Decision 117624 (Official Journal 1968/issue B/29-03-24), as of 01/04/2025 a new pricing policy to visits to museums and archaeological sites, is in force.

EXPLANATORY NOTES

Survey on Museums and Archaeological Sites Attendance	<p>The Survey on Museums and Archaeological Sites Attendance has been producing results since 1970. The survey collects data from the Hellenic Organization of Cultural Resources Development (HOCRED), supervised by the Ministry of Culture, on the number of visitors and the receipts from the tickets sold in the Museums and Archaeological sites of the country.</p> <p>The corresponding data for the Acropolis Museum is available from December 2009 onwards.</p> <p>Pursuant to the provisions of Joint Ministerial Decision 117624 (Official Journal 1968/issue B/29-03-24), as 01/04/2025 a new pricing policy shall apply to visits to museums and archaeological sites.</p>
Legal Framework	<p>The survey is conducted since 1970 on a regular basis and it produces results on a monthly and yearly basis, in compliance with the Joint Ministerial Decision 15189/B379/73.</p>
Reference Period	<p>01/12/2025 – 31/12/2025</p>
Methodology and Definitions	<p>The survey is conducted on a monthly basis from data mainly collected from the Hellenic Organization of Cultural Resources Development (HOCRED), supervised by the Ministry of Culture, on the number of visitors and the receipts from the tickets sold in the Museums and Archaeological sites of the Country. ELSTAT tabulates and presents the data for the whole of the Country, by month and by year.</p>
References	<p>More information on the Survey on Museums and Archaeological Sites Attendance and detailed time series are available on: http://www.statistics.gr/en/statistics/-/publication/SCI21/-</p>