



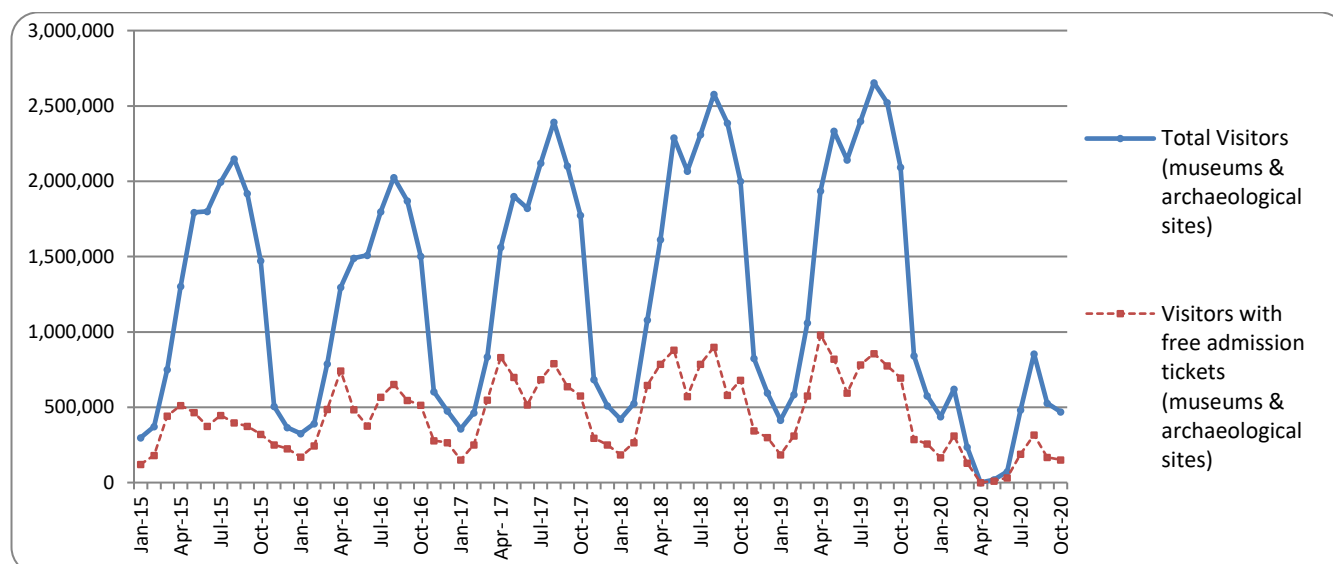
PRESS RELEASE

SURVEY ON MUSEUMS AND ARCHAEOLOGICAL SITES ATTENDANCE OCTOBER 2020

The Hellenic Statistical Authority (ELSTAT) announces the results of the *Survey on Museums and Archaeological Sites Attendance* for October 2020. More specifically:

- In October 2020, compared with October 2019, the number of visitors at Museums recorded a decrease of 80.5%, while a decrease of 80.9% was observed in the number of free admission visitors and a decrease of 79.1% in the corresponding receipts (Table 1).
- In October 2020 compared with the corresponding month of 2019, the number of visitors at Archaeological sites recorded a decrease of 76.4%, while a decrease of 77.0% was observed in the number of free admission visitors and a 78.0% decrease in the corresponding receipts (Table 1).
- During the ten-month period from January to October 2020 compared to the corresponding period of 2019, a decrease of 79.6% was observed in the number of visitors of Museums, while a decrease of 78.6% was recorded in the number of free admission visitors and an 81.7% decrease in the relevant receipts, taking into consideration that the operation of Museums had been suspended from March 14th until June 15th 2020 (Table 2).
- As regards Archaeological sites, during the ten-month period from January to October 2020 compared to the corresponding period of 2019, a decrease of 79.4% was recorded in the number of visitors, while a 77.1% decrease was observed in the number of free admission visitors and an 83.4% decrease in the relevant receipts, taking into consideration that the operation of Archaeological sites had been suspended from March 14th to May 17th 2020 (Table 2).

Graph 1: Visitors of Museums and Archaeological sites (January 2015 – October 2020)



Information on methodological issues:

Sectoral Statistics Division
Tourism and Cultural Statistics Section
Head of the Section: Asimina Katri
Tel: +30 213 135 2168
Fax: +30 210 482 2669
e-mail: a.katri@statistics.gr

Information for data provision:

Tel. +30 213 135 2022, 2308, 2310
e-mail: data.dissem@statistics.gr

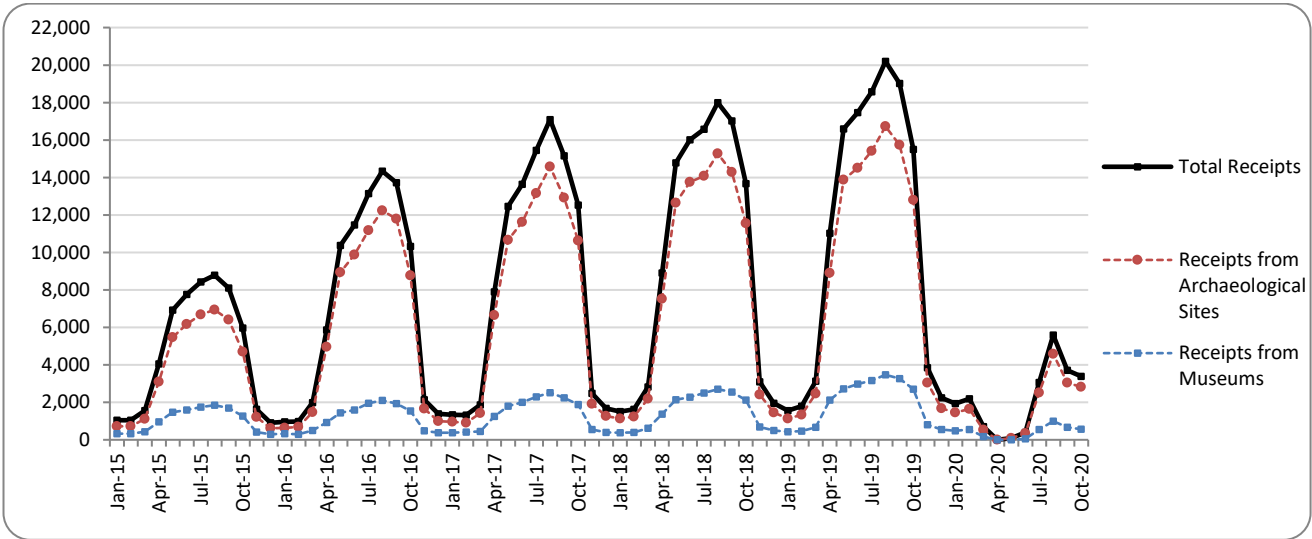
**TABLE 1: VISITORS OF MUSEUMS AND ARCHAEOLOGICAL SITES - TOTAL RECEIPTS
(OCTOBER 2019 & OCTOBER 2020)**

I. NUMBER OF VISITORS			
Museums and Archaeological sites	2019	2020	Change 2020/2019
Total number of visitors (A+B)	2,092,692	469,971	-77.5%
A. Museums (C+E)	583,477	114,027	-80.5%
Acropolis Museum	167,613	29,371	-82.5%
National Archaeological	59,389	10,328	-82.6%
Ancient Olympia	17,990	2,021	-88.8%
Palace of the Grand Master (Rhodes)	30,328	11,805	-61.1%
Herakleion Archaeological (Crete)	69,225	7,130	-89.7%
White Tower	23,775	5,820	-75.5%
Delphi	29,625	4,048	-86.3%
Other museums	185,532	43,504	-76.6%
B. Archaeological Sites (D+F)	1,509,215	355,944	-76.4%
Epidavros ⁽¹⁾	60,587	18,266	-69.9%
The Acropolis of Mycenae & Atreus' Treasure	56,591	9,251	-83.7%
The Acropolis of Athens	349,271	67,024	-80.8%
Sounio	36,631	13,564	-63.0%
The Acropolis of Lindos	62,991	26,164	-58.5%
Royal Tombs of Vergina	20,678	3,818	-81.5%
Ancient Olympia	55,143	7,353	-86.7%
Knossos (Crete)	112,466	27,494	-75.6%
Phaistos (Crete)	16,040	4,746	-70.4%
Ancient Korinthos ⁽¹⁾	31,165	4,099	-86.8%
Mystras ⁽¹⁾	15,747	6,006	-61.9%
Delphi	45,710	9,909	-78.3%
Other archaeological sites	646,195	158,250	-75.5%
II. VISITORS WHO PAID TICKET			
	2019	2020	Change 2020/2019
Total number of visitors who paid ticket (C+D)	1,396,557	318,938	-77.2%
C. Museums	356,126	70,601	-80.2%
D. Archaeological sites	1,040,431	248,337	-76.1%
III. VISITORS WITH FREE ADMISSION TICKETS			
	2019	2020	Change 2020/2019
Total number of visitors with free admission ticket (E+F)	696,135	151,033	-78.3%
E. Museums	227,351	43,426	-80.9%
F. Archaeological sites	468,784	107,607	-77.0%
IV. RECEIPTS (euros)			
	2019	2020	Change 2020/2019
Total Receipts (G+H)	15,504,511	3,386,307	-78.2%
G. Museums	2,704,372	566,389	-79.1%
H. Archaeological sites	12,800,139	2,819,918	-78.0%

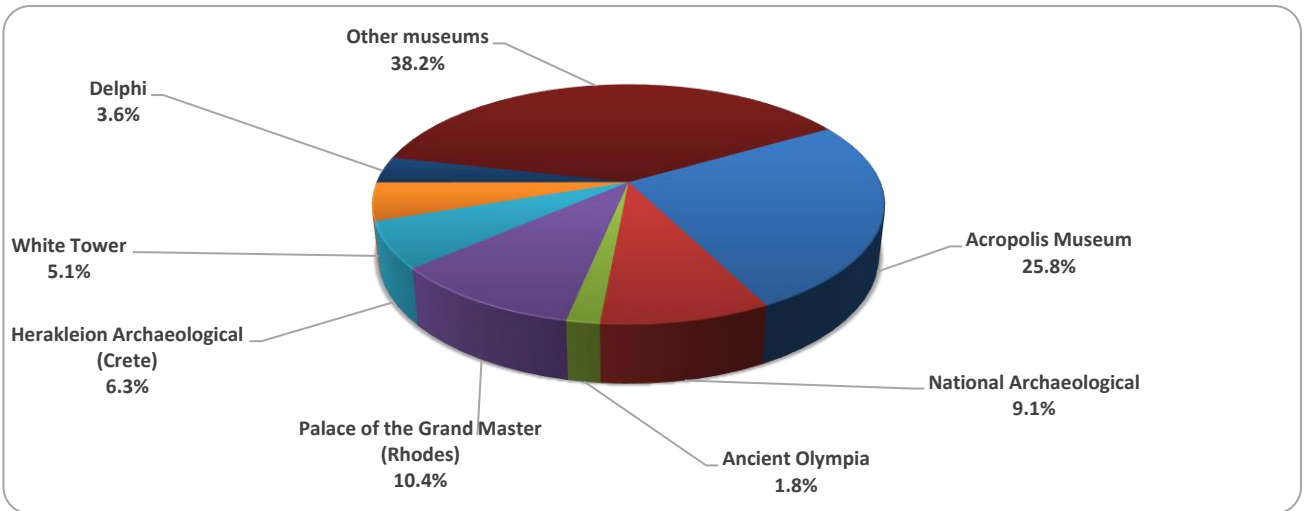
⁽¹⁾ Flat rate ticket, valid both for the museum and the archaeological site.

The following graphs depict the evolution of the receipts (Graph 2), as well as the number of visitors by Museum and Archaeological Site (Graphs 3 and 4).

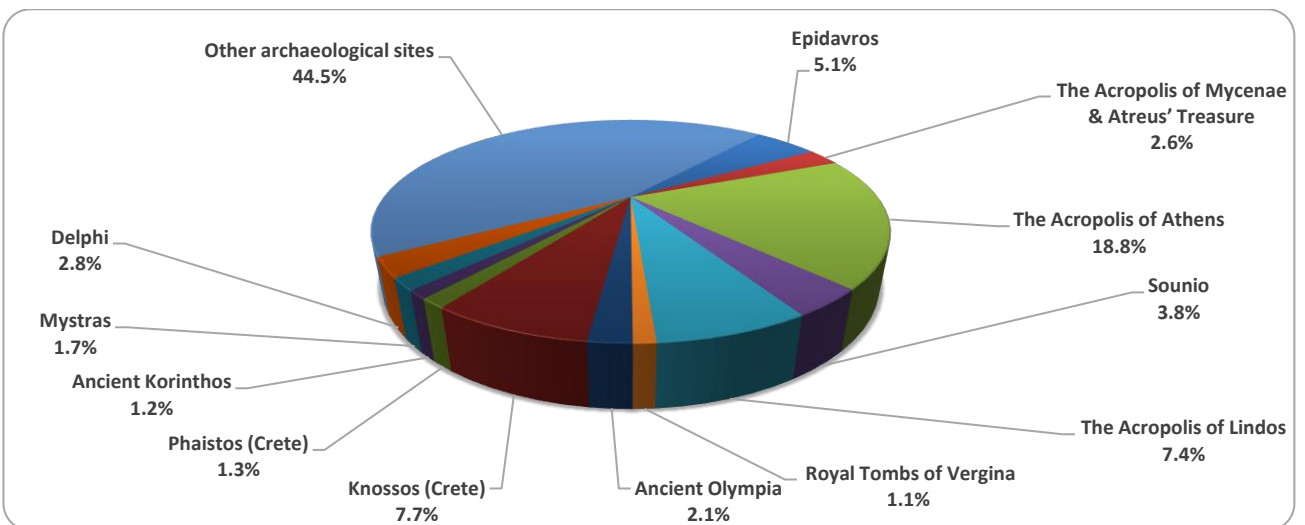
Graph 2: Receipts from Museums and Archaeological Sites (January 2015 – October 2020)
(in thousand euro)



Graph 3: Percentage distribution of visitors by Museum, October 2020



Graph 4: Percentage distribution of visitors by Archaeological site, October 2020



**TABLE 2: VISITORS OF MUSEUMS AND ARCHAEOLOGICAL SITES - TOTAL RECEIPTS
(2018, 2019, JANUARY-OCTOBER 2019, 2020)**

I. VISITORS					
Museums and Archaeological sites	2018	2019	JANUARY-OCTOBER		change 2020/2019
			2019	2020(2)	
Total number of visitors (A+B)	18,603,576	19,559,278	18,141,590	3,723,589	-79.5%
A. Museums (C+E)	5,702,211	5,895,927	5,337,727	1,090,832	-79.6%
Acropolis Museum	1,774,304	1,755,435	1,579,711	323,387	-79.5%
National Archaeological	594,219	608,876	541,966	97,324	-82.0%
Ancient Olympia	156,658	159,348	151,009	21,415	-85.8%
Palace of the Grand Master (Rhodes)	242,759	263,958	249,644	53,734	-78.5%
Herakleion Archaeological (Crete)	555,031	660,533	626,563	62,142	-90.1%
White Tower	225,944	251,760	213,733	62,007	-71.0%
Delphi	249,754	275,993	252,697	41,412	-83.6%
Other museums	1,903,542	1,920,024	1,722,404	429,411	-75.1%
B. Archaeological Sites (D+F)	12,901,365	13,663,351	12,803,863	2,632,757	-79.4%
Epidavros ⁽¹⁾	548,890	535,751	508,772	102,425	-79.9%
The Acropolis of Mycenae & Atreus' Treasure	495,993	502,619	473,110	77,714	-83.6%
The Acropolis of Athens	3,150,604	3,593,586	3,256,962	608,191	-81.3%
Sounio	306,665	337,544	310,401	98,596	-68.2%
The Acropolis of Lindos	489,431	525,757	517,969	155,006	-70.1%
Royal Tombs of Vergina	222,503	223,151	198,763	37,281	-81.2%
Ancient Olympia	484,238	457,710	434,613	63,789	-85.3%
Knossos (Crete)	855,663	949,192	896,775	173,599	-80.6%
Phaistos (Crete)	134,538	121,796	107,965	31,640	-70.7%
Ancient Korinthos ⁽¹⁾	196,944	214,023	198,284	31,329	-84.2%
Mystras ⁽¹⁾	145,939	147,713	140,630	35,375	-74.8%
Delphi	405,947	405,348	376,995	74,579	-80.2%
Other archaeological sites	5,464,010	5,649,161	5,382,624	1,143,233	-78.8%
II. VISITORS WHO PAID TICKET					
	2018	2019	JANUARY-OCTOBER		change
			2019	2020	2020/2019
Total number of visitors who paid ticket (C+D)	11,576,404	12,434,987	11,561,277	2,250,464	-80.5%
C. Museums	3,155,269	3,345,997	3,050,492	601,173	-80.3%
D. Archaeological sites	8,421,135	9,088,990	8,510,785	1,649,291	-80.6%
III. VISITORS WITH FREE ADMISSION TICKETS					
	2018	2019	JANUARY-OCTOBER		change
			2019	2020	2020/2019
Total number of visitors with free admission ticket (E+F)	7,027,172	7,124,291	6,580,313	1,473,125	-77.6%
E. Museums	2,546,942	2,549,930	2,287,235	489,659	-78.6%
F. Archaeological sites	4,480,230	4,574,361	4,293,078	983,466	-77.1%
IV. RECEIPTS (euros)					
	2018	2019	JANUARY-OCTOBER		change
			2019	2020	2020/2019
Total Receipts (G+H)	115,774,516	130,938,846	124,851,346	21,066,338	-83.1%
G. Museums	18,251,493	23,343,026	21,974,665	4,025,292	-81.7%
H. Archaeological sites	97,523,023	107,595,820	102,876,681	17,041,046	-83.4%

⁽¹⁾ Flat rate ticket, valid both for the museum and the archaeological site.

⁽²⁾ Museums remained closed from March 14th to June 15th, 2020, while Archaeological sites remained closed from March 14th to May 17th, 2020, in the framework of the preventive measures for Covid-19 pandemic.

EXPLANATORY NOTES

Survey on Museums and Archaeological Sites Attendance The Survey on Museums and Archaeological Sites Attendance has been producing results since 1970. The survey collects data from the Archaeological Receipts Fund (ARF) of the Ministry of Culture and Sports concerning the number of visitors and the receipts from the tickets sold in the Museums and Archaeological sites of the country. The corresponding data for the Acropolis Museum is available from December 2009 onwards.

Legal Framework The survey is conducted since 1970 on a regular basis and it produces results on a monthly and yearly basis, in compliance with the Joint Ministerial Decision 15189/B379/73.

Reference Period 01/10/2020 to 31/10/2020

Methodology and Definitions The Survey is conducted on a monthly basis from data mainly collected from the Archaeological Receipts Fund (ARF) of the Ministry of Culture and Sports concerning the number of visitors and the receipts from the tickets sold in the Museums and Archaeological sites of the Country. ELSTAT tabulates and presents the data for the whole of the Country, by month and by year.

Number of flat rate tickets

From April 1999 onwards, in some museums and the nearby archaeological sites, in addition to the ordinary ticket, a new “flat rate ticket” was established, which is valid for both the museum and the nearby archaeological site. The total number of these flat rate tickets for **October 2020** was **22,458**.

References More information on the Survey on Museums and Archaeological Sites Attendance and detailed time series are available on: <http://www.statistics.gr/en/statistics/-/publication/SCI21/>