



## PRESS RELEASE

### SURVEYS ON PRE-PRIMARY AND PRIMARY EDUCATION (KINDERGARTENS AND PRIMARY SCHOOLS) END OF SCHOOL YEAR 2018/2019

The Hellenic Statistical Authority (ELSTAT) announces data on Pre-Primary and Primary Education Statistics for the school year 2018/2019. On the basis of available survey data the following observations can be made:

- a) In the school year 2018/2019 compared with the school year 2017/2018, **school units** decreased by 0.6% in kindergartens and by 0.8% in primary schools (Tables 2 and 4, respectively);
- b) In the school year 2018/2019 compared with the school year 2017/2018, **teaching staff** increased by 3.4% in kindergartens and by 5.2% in primary schools (Tables 2 and 4, respectively);
- c) The **number of pupils** enrolled in the school year 2018/2019 compared with the corresponding number in the school year 2017/2018 recorded a 2.3% increase in kindergartens and a 1.1% decrease in primary schools (Tables 3 and 5, respectively);
- d) The **number of graduates** in primary schools in the school year 2018/2019 compared with 2017/2018 decreased by 0.6% (Table 6).
- e) The **ratio of teaching staff to pupils**, in the school year 2018/2019, was 1 to 10.2 in kindergartens and 1 to 8.7 in primary schools; in the school year 2017/2018 the corresponding ratio was 1 to 10.3 and 1 to 9.3, respectively (Tables 2,3,4 and 5).
- f) The **Region of Attiki** accounted for the largest share of pupils enrolled in pre-primary and primary education schools with 32.0% for kindergartens and 35.2% for primary schools (Graphs 2 and 3, respectively).

**Information on methodological issues:**

Division of Sectoral Statistics  
Section of Statistics on Education & Sports  
Head of the Section: Antonios Kritikos  
Tel: +30 213 135 2134, 2782  
Fax: +30 213 135 2780  
e-mail: a.kritikos@statistics.gr

**Information for data provision:**

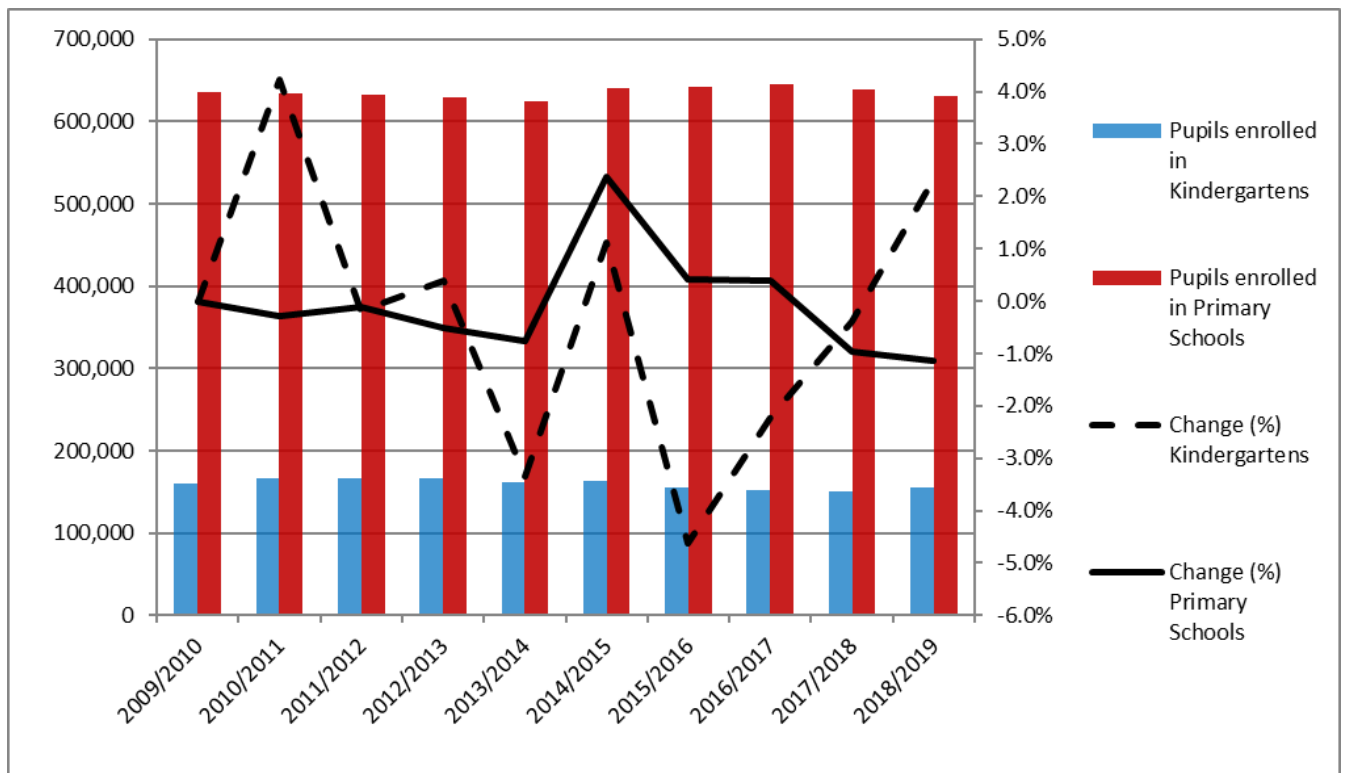
Tel. +30 213 135 2022, 2310  
Email. Data.dissem@statistics.gr

Table 1 and Graph 1 depict the evolution of the pupil population of kindergartens and primary schools during school years 2009/2010 to 2018/2019.

**Table 1**  
**Evolution of pupil population in Pre-Primary and Primary Education 2009/10 - 2018/19**

School Year	Number of Pupils	
	Kindergartens	Primary Schools
2009/2010	159,502	635,935
2010/2011	166,233	634,048
2011/2012	165,931	633,291
2012/2013	166,576	630,043
2013/2014	160,994	625,165
2014/2015	162,781	640,001
2015/2016	155,243	642,707
2016/2017	151,804	645,250
2017/2018	151,225	639,037
2018/2019	154,744	631,700

**Graph 1**  
**Evolution of pupil population in Pre-Primary and Primary Education 2009/10 - 2018/19**



## A. KINDERGARTENS

Tables 2 and 3 present data on the number of kindergartens, teaching staff and pupils enrolled.

**Table 2. School Units and Teaching Staff<sup>1</sup> by Type of School Unit and NUTS 2 Region (Kindergartens)**

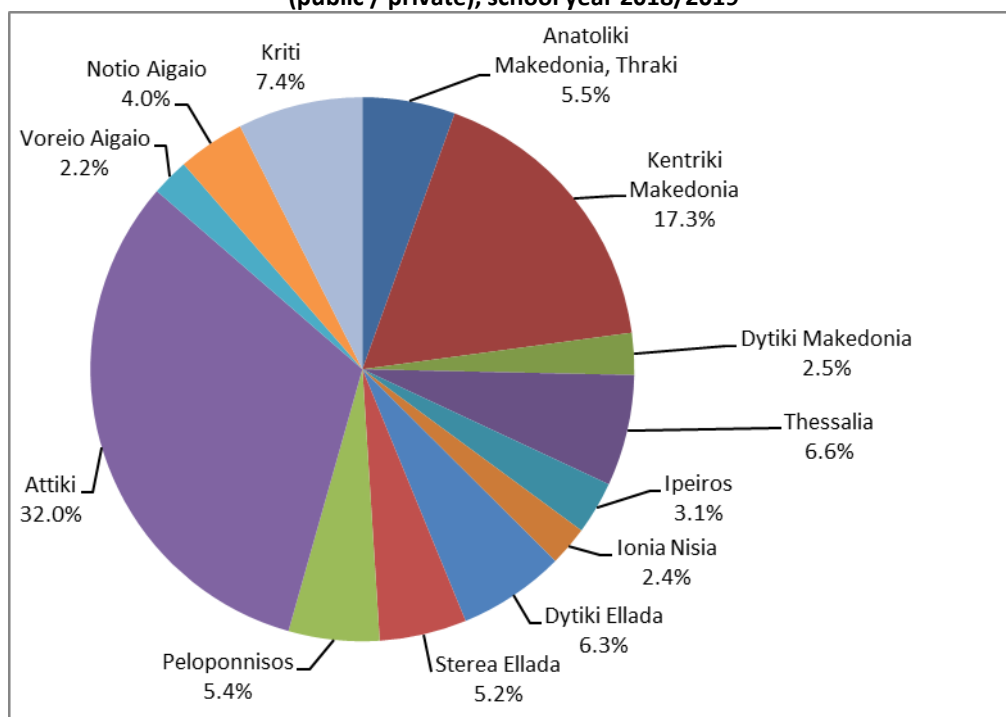
<i>By Type of School Unit</i>						
School Units	Number of School Units			Teaching Staff		
	2017/18	2018/19	Change (%)	2017/18	2018/19	Change (%)
Public	5,006	4,962	-0.9	13,754	14,233	3.5
Private	638	649	1.7	972	998	2.7
<b>TOTAL</b>	<b>5,644</b>	<b>5,611</b>	<b>-0.6</b>	<b>14,726</b>	<b>15,231</b>	<b>3.4</b>
<i>By Region</i>						
NUTS 2 Region	Number of School Units			Teaching Staff		
	2017/18	2018/19	Change (%)	2017/18	2018/19	Change (%)
Anatoliki Makedonia, Thraki	320	315	-1.6	811	822	1.4
Kentriki Makedonia	996	993	-0.3	2,667	2,738	2.7
Dytiki Makedonia	189	187	-1.1	451	460	2.0
Thessalia	460	451	-2.0	1,041	1,038	-0.3
Ipeiros	210	207	-1.4	482	525	8.9
Ionia Nisia	145	143	-1.4	380	403	6.1
Dytiki Ellada	415	401	-3.4	943	929	-1.5
Stereia Ellada	320	315	-1.6	743	788	6.1
Peloponnisos	347	341	-1.7	801	829	3.5
Attiki	1,440	1,456	1.1	4,103	4,302	4.9
Voreio Aigaio	149	150	0.7	432	454	5.1
Notio Aigaio	222	223	0.5	606	644	6.3
Kriti	431	429	-0.5	1,266	1,299	2.6
<b>TOTAL</b>	<b>5,644</b>	<b>5,611</b>	<b>-0.6</b>	<b>14,726</b>	<b>15,231</b>	<b>3.4</b>

<sup>1</sup> Teaching staff includes teachers classified as absent. "Absent teachers" are the teachers with a fixed post in the school unit, who are absent for more than 20 days (due to illness, training, maternity leave, etc) and their replacement is pending, as well as the teachers who are seconded to other administrative posts of the Ministry of Education and Religious Affairs or elsewhere.

**Table 3. Pupils enrolled by Type of School Unit and NUTS 2 Region (Kindergartens)**

<i>By Type of School Unit</i>									
School Units	Greece total			Males			Females		
	2017/18	2018/19	Change (%)	2017/18	2018/19	Change (%)	2017/18	2018/19	Change (%)
Public	136,308	138,762	1.8	70,057	71,352	1.8	66,251	67,410	1.7
Private	14,917	15,982	7.1	7,671	8,199	6.9	7,246	7,783	7.4
<b>TOTAL</b>	<b>151,225</b>	<b>154,744</b>	<b>2.3</b>	<b>77,728</b>	<b>79,551</b>	<b>2.3</b>	<b>73,497</b>	<b>75,193</b>	<b>2.3</b>
<i>By Region</i>									
NUTS 2 Region	Greece total			Males			Females		
	2017/18	2018/19	Change (%)	2017/18	2018/19	Change (%)	2017/18	2018/19	Change (%)
Anatoliki Makedonia, Thraki	8,136	8,534	4.9	4,083	4,349	6.5	4,053	4,185	3.3
Kentriki Makedonia	26,977	26,826	-0.6	13,840	13,846	0.0	13,137	12,980	-1.2
Dytiki Makedonia	3,924	3,843	-2.1	2,028	2,014	-0.7	1,896	1,829	-3.5
Thessalia	10,057	10,235	1.8	5,227	5,294	1.3	4,830	4,941	2.3
Ipeiros	4,265	4,868	14.1	2,190	2,451	11.9	2,075	2,417	16.5
Ionia Nisia	3,459	3,647	5.4	1,762	1,905	8.1	1,697	1,742	2.7
Dytiki Ellada	9,684	9,824	1.4	5,080	5,053	-0.5	4,604	4,771	3.6
Stereia Ellada	7,748	8,021	3.5	4,062	4,213	3.7	3,686	3,808	3.3
Peloponnisos	7,690	8,354	8.6	3,936	4,274	8.6	3,754	4,080	8.7
Attiki	48,594	49,489	1.8	24,827	25,304	1.9	23,767	24,185	1.8
Voreio Aigaio	3,509	3,453	-1.6	1,800	1,751	-2.7	1,709	1,702	-0.4
Notio Aigaio	6,012	6,160	2.5	3,094	3,149	1.8	2,918	3,011	3.2
Kriti	11,170	11,490	2.9	5,799	5,948	2.6	5,371	5,542	3.2
<b>TOTAL</b>	<b>151,225</b>	<b>154,744</b>	<b>2.3</b>	<b>77,728</b>	<b>79,551</b>	<b>2.3</b>	<b>73,497</b>	<b>75,193</b>	<b>2.3</b>

**Graph 2**  
**Percentage distribution of pupils enrolled in Kindergartens, by NUTS 2 Region (public / private), school year 2018/2019**



## B. PRIMARY SCHOOLS

Tables 4, 5 and 6 present data on the number of primary schools, teaching staff, pupils enrolled and graduates.

**Tables 4. School Units and Teaching Staff<sup>2</sup> by Type of School Unit and NUTS 2 Region (Primary Schools)**

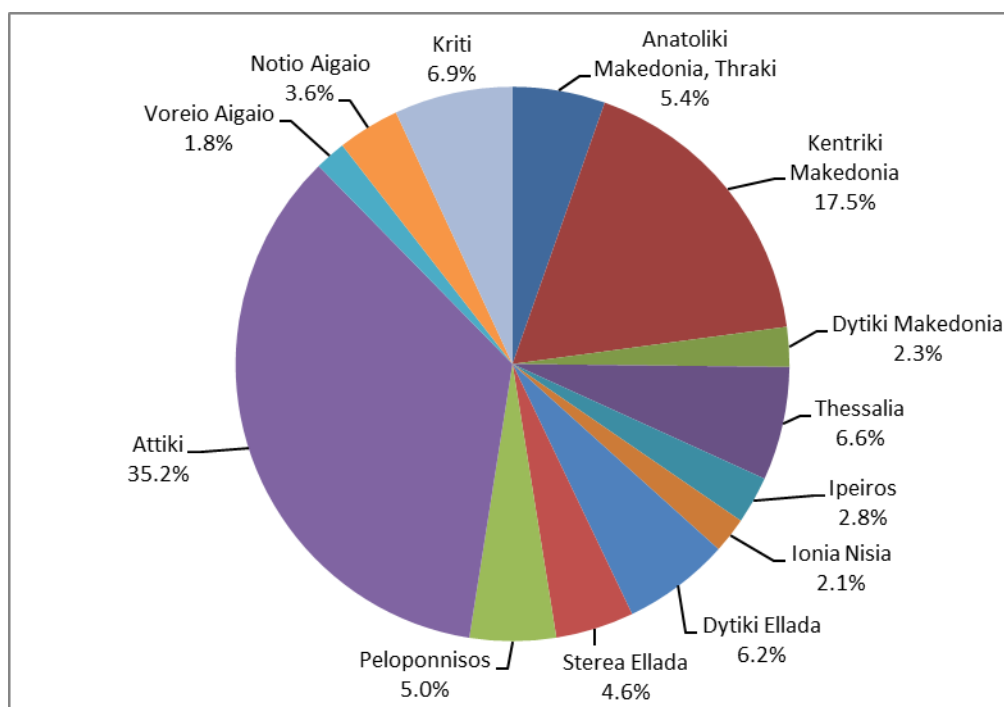
<i>By Type of School Unit</i>						
School Units	Number of School Units			Teaching Staff		
	2017/18	2018/19	Change (%)	2017/18	2018/19	Change (%)
Public	4,324	4,293	-0.7	65,427	68,974	5.4
Private	162	159	-1.9	3,553	3,587	1.0
<b>TOTAL</b>	<b>4,486</b>	<b>4,452</b>	<b>-0.8</b>	<b>68,980</b>	<b>72,561</b>	<b>5.2</b>
<i>By Region</i>						
NUTS 2 Region	Number of School Units			Teaching Staff		
	2017/18	2018/19	Change (%)	2017/18	2018/19	Change (%)
Anatoliki Makedonia, Thraki	346	345	-0.3	4,089	4,200	2.7
Kentriki Makedonia	754	749	-0.7	12,249	12,814	4.6
Dytiki Makedonia	157	155	-1.3	2,018	2,117	4.9
Thessalia	355	348	-2.0	4,647	4,745	2.1
Ipeiros	189	185	-2.1	2,160	2,231	3.3
Ionia Nisia	103	103	0.0	1,512	1,579	4.4
Dytiki Ellada	377	373	-1.1	4,464	4,552	2.0
Stereia Ellada	292	288	-1.4	3,405	3,548	4.2
Peloponnisos	266	263	-1.1	3,386	3,495	3.2
Attiki	1,007	1,006	-0.1	22,012	23,617	7.3
Voreio Aigaio	136	135	-0.7	1,587	1,669	5.2
Notio Aigaio	184	184	0.0	2,511	2,657	5.8
Kriti	320	318	-0.6	4,940	5,337	8.0
<b>TOTAL</b>	<b>4,486</b>	<b>4,452</b>	<b>-0.8</b>	<b>68,980</b>	<b>72,561</b>	<b>5.2</b>

<sup>2</sup> Teaching staff includes teachers classified as absent. "Absent teachers" are the teachers with a fixed post in the school unit, who are absent for more than 20 days (due to illness, training, maternity leave, etc) and their replacement is pending, as well as the teachers who are seconded to other administrative posts of the Ministry of Education and Religious Affairs or elsewhere.

**Table 5. Pupils enrolled by Type of School Unit and NUTS 2 Region (Primary Schools)**

<i>By Type of School Unit</i>									
School Units	Greece total			Males			Females		
	2017/18	2018/19	Change (%)	2017/18	2018/19	Change (%)	2017/18	2018/19	Change (%)
Public	601,601	593,673	-1.3	308,848	304,672	-1.4	292,753	289,001	-1.3
Private	37,436	38,027	1.6	19,305	19,669	1.9	18,131	18,358	1.3
<b>TOTAL</b>	<b>639,037</b>	<b>631,700</b>	<b>-1.1</b>	<b>328,153</b>	<b>324,341</b>	<b>-1.2</b>	<b>310,884</b>	<b>307,359</b>	<b>-1.1</b>
<i>By Region</i>									
NUTS 2 Region	Greece total			Males			Females		
	2017/18	2018/19	Change (%)	2017/18	2018/19	Change (%)	2017/18	2018/19	Change (%)
Anatoliki Makedonia, Thraki	34,648	34,152	-1.4	17,918	17,565	-2.0	16,730	16,587	-0.9
Kentriki Makedonia	112,918	110,232	-2.4	57,799	56,402	-2.4	55,119	53,830	-2.3
Dytiki Makedonia	14,994	14,626	-2.5	7,672	7,512	-2.1	7,322	7,114	-2.8
Thessalia	42,668	41,820	-2.0	21,811	21,450	-1.7	20,857	20,370	-2.3
Ipeiros	17,889	17,533	-2.0	9,314	9,106	-2.2	8,575	8,427	-1.7
Ionia Nisia	13,095	13,118	0.2	6,796	6,755	-0.6	6,299	6,363	1.0
Dytiki Ellada	40,172	39,462	-1.8	20,780	20,412	-1.8	19,392	19,050	-1.8
Stereia Ellada	29,410	28,898	-1.7	15,233	14,932	-2.0	14,177	13,966	-1.5
Peloponnisos	32,124	31,776	-1.1	16,509	16,360	-0.9	15,615	15,416	-1.3
Attiki	223,172	222,121	-0.5	114,551	114,062	-0.4	108,621	108,059	-0.5
Voreio Aigaio	11,250	11,393	1.3	5,736	5,809	1.3	5,514	5,584	1.3
Notio Aigaio	22,769	22,876	0.5	11,567	11,593	0.2	11,202	11,283	0.7
Kriti	43,928	43,693	-0.5	22,467	22,383	-0.4	21,461	21,310	-0.7
<b>TOTAL</b>	<b>639,037</b>	<b>631,700</b>	<b>-1.1</b>	<b>328,153</b>	<b>324,341</b>	<b>-1.2</b>	<b>310,884</b>	<b>307,359</b>	<b>-1.1</b>

**Graph 3**  
Percentage distribution of pupils enrolled in Primary Schools  
by NUTS 2 Region, school year 2018/2019



**Table 6. Graduates by Type of School Unit and NUTS 2 Region (Primary Schools)**

<i>By Type of School Unit</i>			
School Units	Graduates		
	2017/18	2018/19	Change (%)
<b>Public</b>	99,142	98,455	-0.7
<b>Private</b>	5,511	5,559	0.9
<b>TOTAL</b>	<b>104,653</b>	<b>104,014</b>	<b>-0.6</b>
<i>By Region</i>			
NUTS 2 Region	Graduates		
	2017/18	2018/19	Change (%)
<b>Anatoliki Makedonia, Thraki</b>	5,588	5,639	0.9
<b>Kentriki Makedonia</b>	18,833	18,407	-2.3
<b>Dytiki Makedonia</b>	2,520	2,505	-0.6
<b>Thessalia</b>	7,130	6,962	-2.4
<b>Ipeiros</b>	3,028	2,875	-5.1
<b>Ionia Nisia</b>	2,108	2,125	0.8
<b>Dytiki Ellada</b>	6,413	6,383	-0.5
<b>Stereia Ellada</b>	4,886	4,697	-3.9
<b>Peloponnisos</b>	5,333	5,335	0.0
<b>Attiki</b>	36,249	36,313	0.2
<b>Voreio Aigaio</b>	1,762	1,848	4.9
<b>Notio Aigaio</b>	3,645	3,667	0.6
<b>Kriti</b>	7,158	7,258	1.4
<b>TOTAL</b>	<b>104,653</b>	<b>104,014</b>	<b>-0.6</b>

## EXPLANATORY NOTES

**Surveys on Pre-Primary and Primary Education** Pre-primary and Primary Education includes Kindergartens and Primary Schools. The relevant surveys are conducted on a yearly basis, with the aim of collecting data on the number of pupils enrolled, the school units and the number of teaching staff.

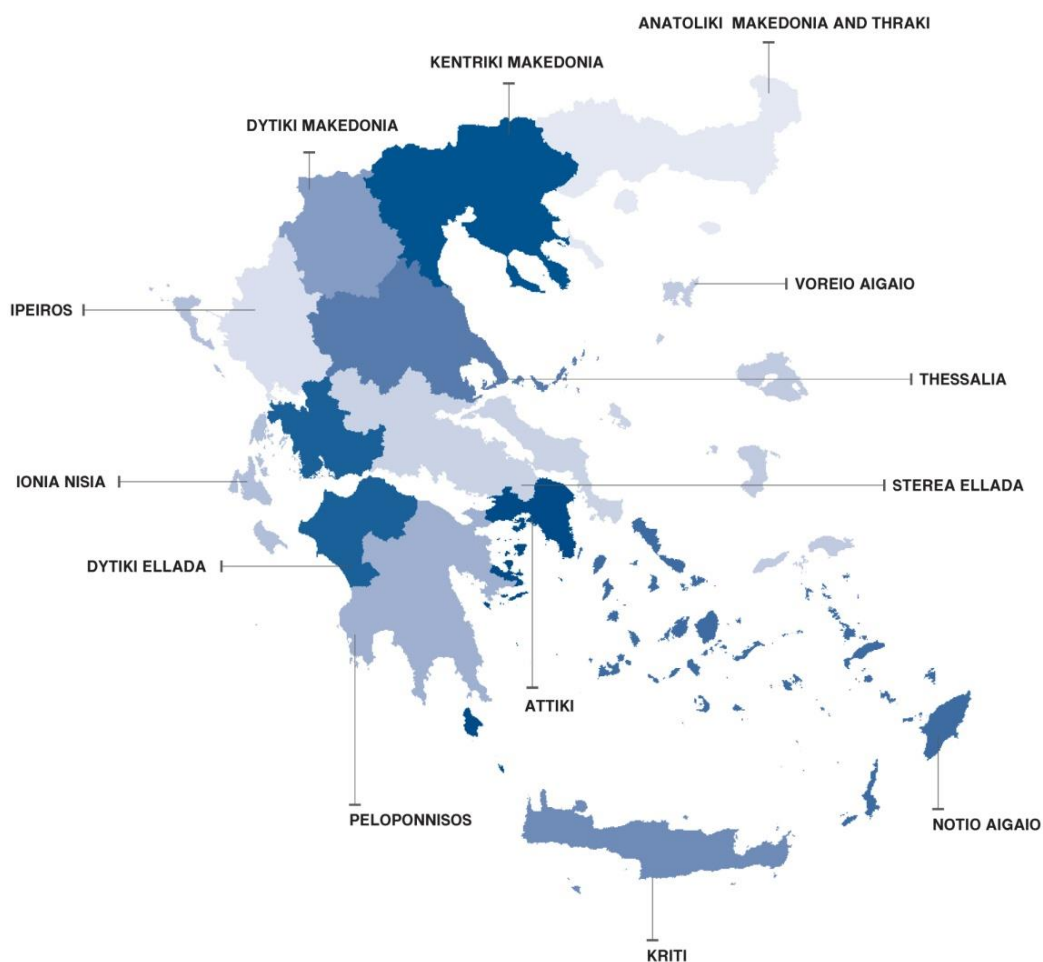
**Legal Framework** The surveys are conducted by virtue of Regulation 452/2008 of the European Parliament and the Council and implementing Regulation 912/2013 of the European Commission.

**Statistical Units** The statistical units are the school units.

**Coverage** Greece total.

**Geographical Classification** The geographical classification is based on Nomenclature of Territorial Units for Statistics.

**Map of the 13 Regions (NUTS 2) of Greece**



- Dissemination of results** The data are posted on a yearly basis on the website of ELSTAT and are published in a relevant Press Release.
- Reference period** The data of the surveys refer to the end of school year 2018/2019. For comparability reasons, the data of the end of the previous school year 2017/2018 are also provided.
- Methodology and coverage** Until the school year 2013/2014, the surveys on Pre-Primary and Primary Education used to be census, yearly surveys and they were conducted by ELSTAT.  
For the school year 2014/2015 onwards, data of these surveys are collected as follows:
- As regards public school units, the data are extracted from the “live” e-platform “MySchool” of the Ministry of Education and Religious Affairs.
  - As regards private school units, data are collected from the questionnaires that are sent to the relevant school units.
- References** More information, such as tables with the survey results, samples of questionnaires, etc, on the Survey on Pre-Primary and Primary Education can be found on the webpage of ELSTAT [www.statistics.gr](http://www.statistics.gr) and at the link: “Statistics” / Population and Social Conditions / Education / Primary Education / Kindergartens (Beginning – End of school year) or Primary Schools (Beginning – End of school year”).