



## PRESS RELEASE

### INDUSTRIAL PRODUCTION INDEX: April 2021, y-o-y increase of 22.5%

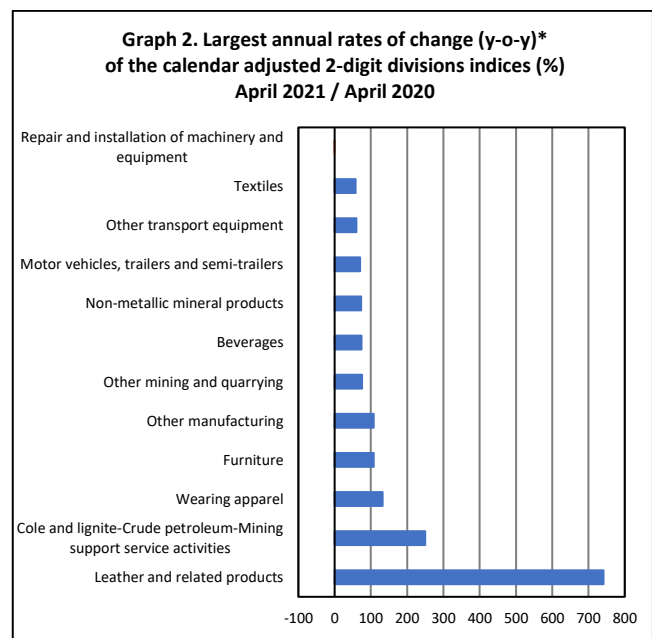
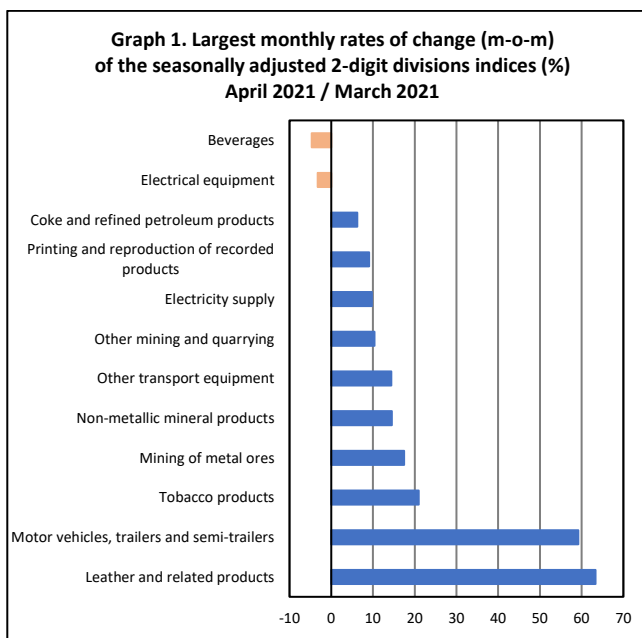
The Hellenic Statistical Authority announces the Industrial Production Index (IPI) with base year 2015=100.0 for April 2021, on the basis of provisional and working day adjusted data, as follows:

The Overall Industrial Production Index in April 2021 recorded an increase of 22.5% compared with April 2020. The Overall IPI in April 2020 decreased by 10.8% compared with the corresponding index in April 2019 (Table 1).

The average Overall Industrial Production Index for the period from January to April 2021 recorded an increase of 8.7% compared with the average IPI of the period from January to April 2020 (Table 2).

The seasonally adjusted Overall Industrial Production Index in April 2021 recorded an increase of 4.4% compared with the corresponding index of March 2021 (Table 4).

The index of leather and related products division recorded the greatest percentage increase, whereas the index of beverages division showed the greatest percentage decrease in April 2021 compared with March 2021. Comparing the indices of April 2021 with the corresponding indices of April 2020, the greatest percentage increase was recorded in leather and related products as well, while the only percentage decrease was recorded in repair and installation of machinery and equipment (Tables 1 and 4).



\* The data of this Press Release for April 2021 reflect the impact of COVID-19 pandemic on industrial production.

#### **Information for methodological issues:**

Business Statistics Division  
Manufacture-Construction Indices and Industrial Products Section  
Head of the Section: Diamantaki Aikaterini  
Tel: +30 213 135 2056  
E-mail: [a.diamantaki@statistics.gr](mailto:a.diamantaki@statistics.gr)

#### **Information for data provision:**

Tel: +30 213 135 2022, 2308, 2310  
E-mail: [data.dissem@statistics.gr](mailto:data.dissem@statistics.gr)

## Evolution of the Industrial Production Index in April 2021

### I. Annual changes: April 2021/ April 2020 (Table 1)

The 22.5% increase of the working day adjusted Overall IPI in April 2021, compared with the corresponding index in April 2020, is due to the annual changes of the sub-indices in the following industrial sections:

#### Increase of:

- 46.4% in the Mining and Quarrying Index. The increase was the result of the annual changes of the sub-indices in the following 2-digit divisions: mining of coal and lignite - extraction of crude petroleum and natural gas – mining support services activities, other mining and quarrying, mining of metal ores.
- 22.8% in the Manufacturing Index. The increase was the result of the annual changes of the sub-indices in the following 2-digit divisions: leather and related products, wearing apparel, furniture, other manufacturing, beverages, other non-metallic mineral products, motor vehicles, trailers and semi-trailers, other transport equipment, textiles.
- 22.4% in the Electricity Supply Index.
- 1.9% in the Water Supply Index.

### II. Rates of change of the average index in the period January – April 2021 compared with the corresponding index of the period January – April 2020 (Table 2)

The 8.7% increase of the working day adjusted average Overall IPI in the 4-month period January – April 2021, compared with the corresponding index in January – April 2020, is due to the corresponding rates of change of the sub-indices in the following industrial sections:

#### Increase of:

- 14.9% in the Electricity Supply Index.
- 11.5% in the Mining and Quarrying Index.
- 7.4% in the Manufacturing Index.
- 0.3% in the Water Supply Index.

### III. Monthly changes: April 2021 / March 2021 (Table 4)

The 4.4% increase of the seasonally adjusted Overall IPI in April 2021, compared with the corresponding index in March 2021 is due to the monthly changes of the sub-indices in the following industrial sections:

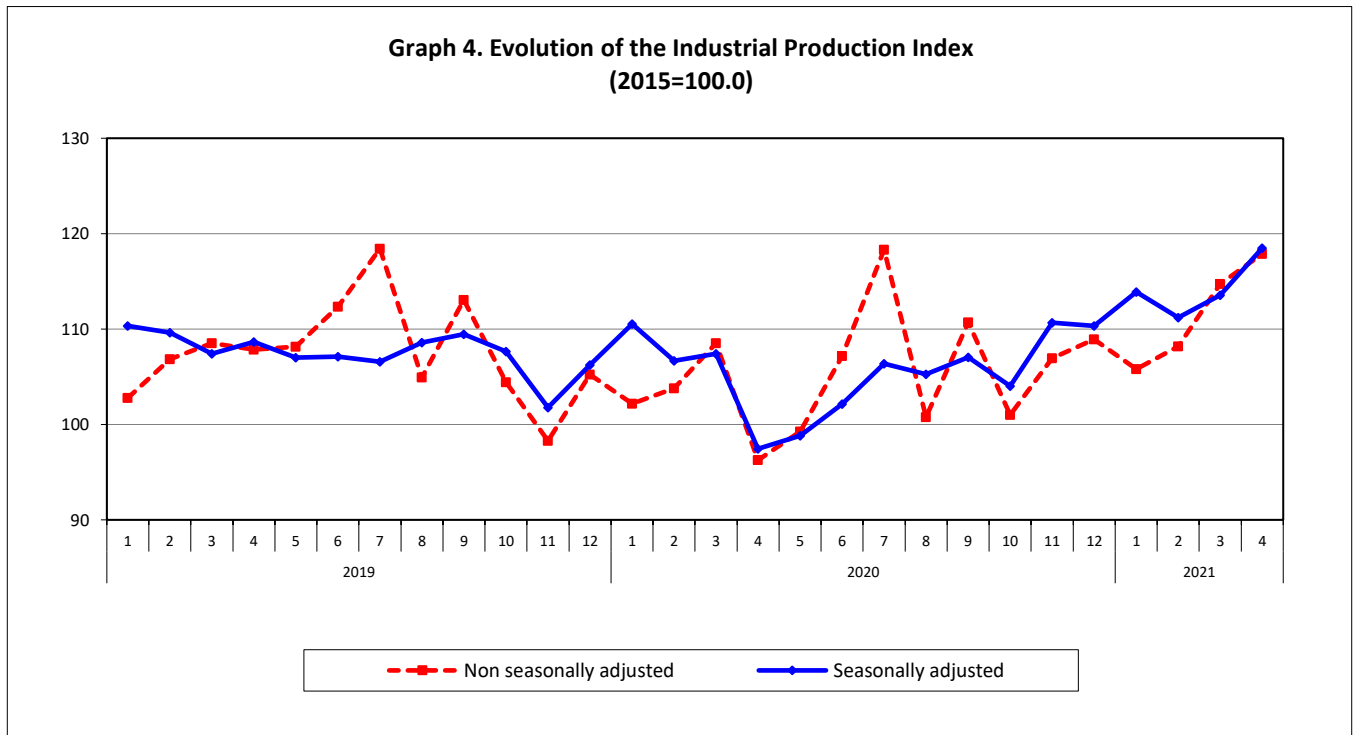
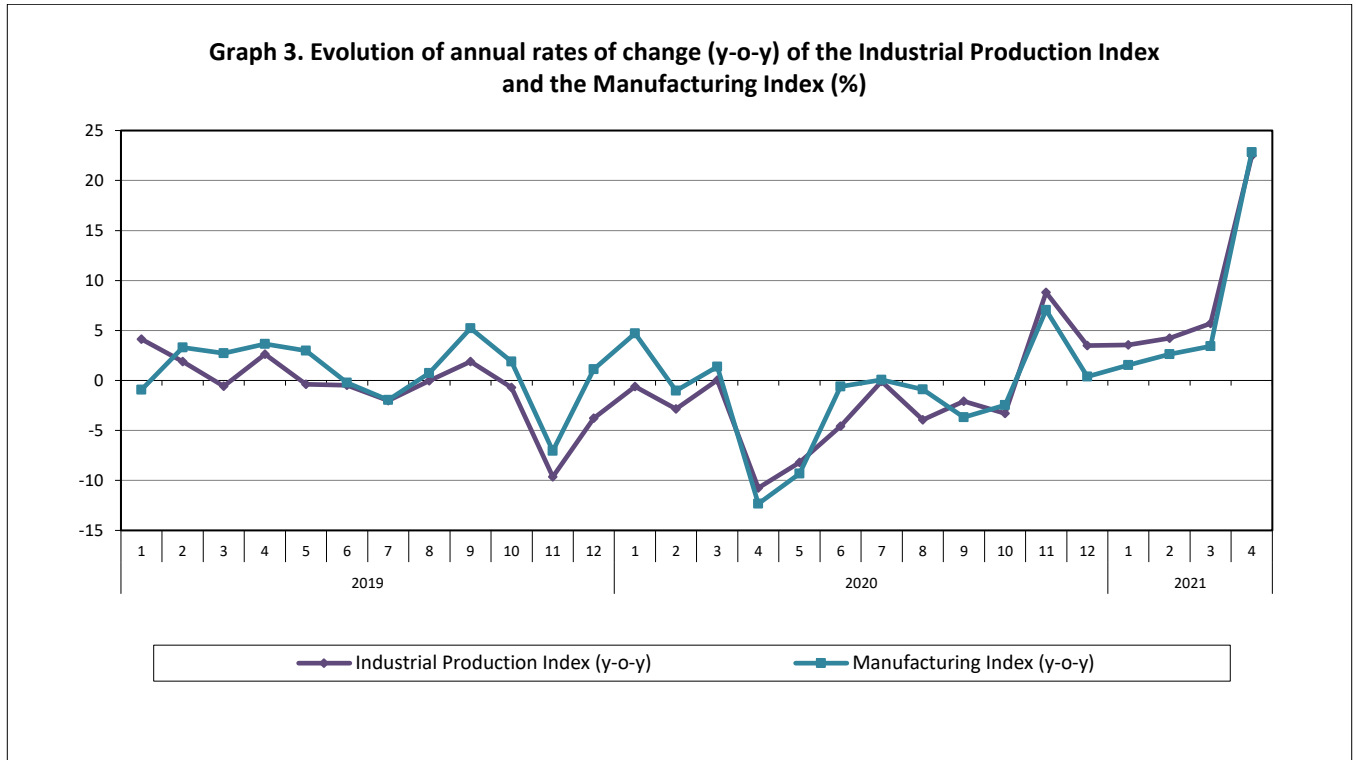
#### 1. Increase of:

- 9.9% in the Mining and Quarrying Index.
- 9.7% in the Electricity Supply Index.
- 2.5% in the Manufacturing Index.

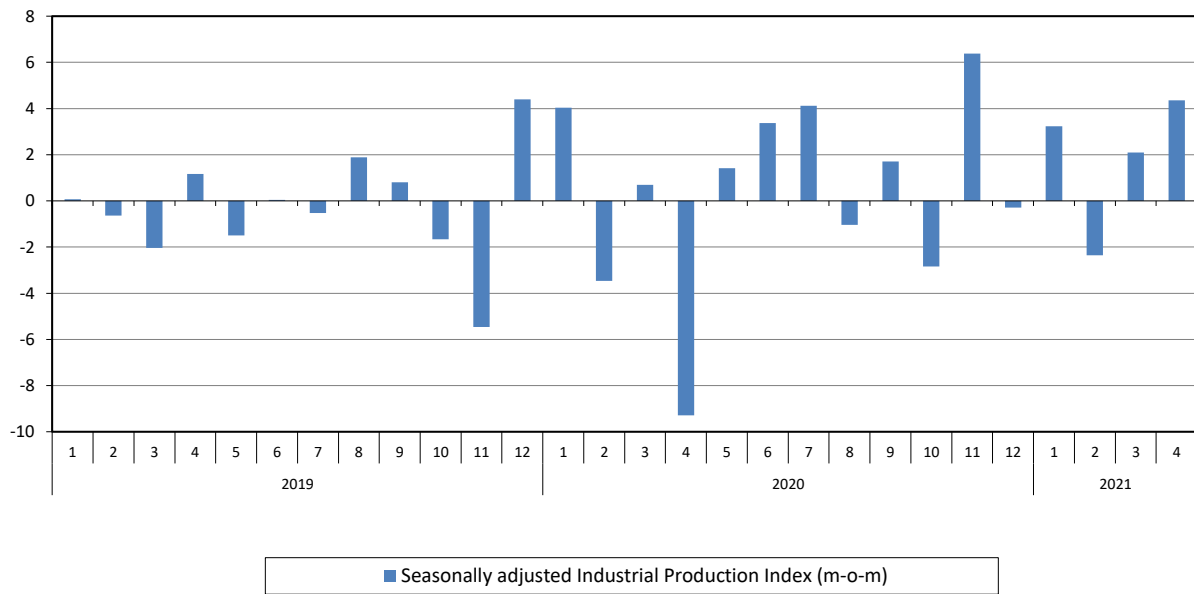
#### 2. Decrease of:

- 0.2% in the Water Supply Index.

The following graphs depict the annual rates of change (y-o-y) of the Industrial Production Index and the Manufacturing Index, the evolution of the seasonally and non-seasonally adjusted Overall Industrial Production Index, as well as the monthly rates of change (m-o-m) of the seasonally adjusted index.



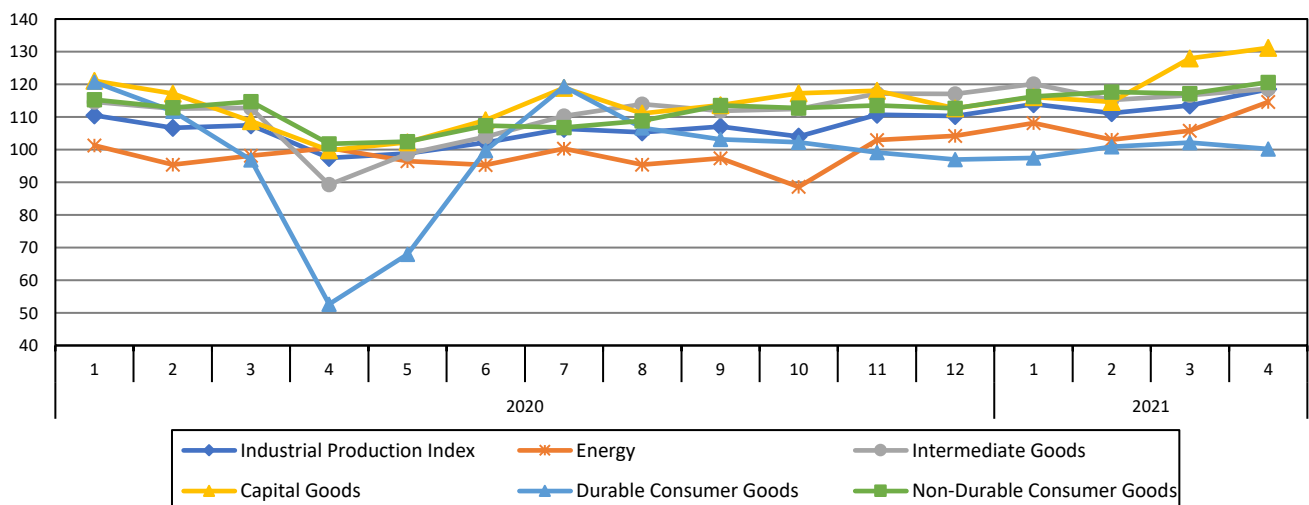
**Graph 5. Evolution of the monthly rates of change (m-o-m) of the seasonally adjusted Industrial Production Index (%)**



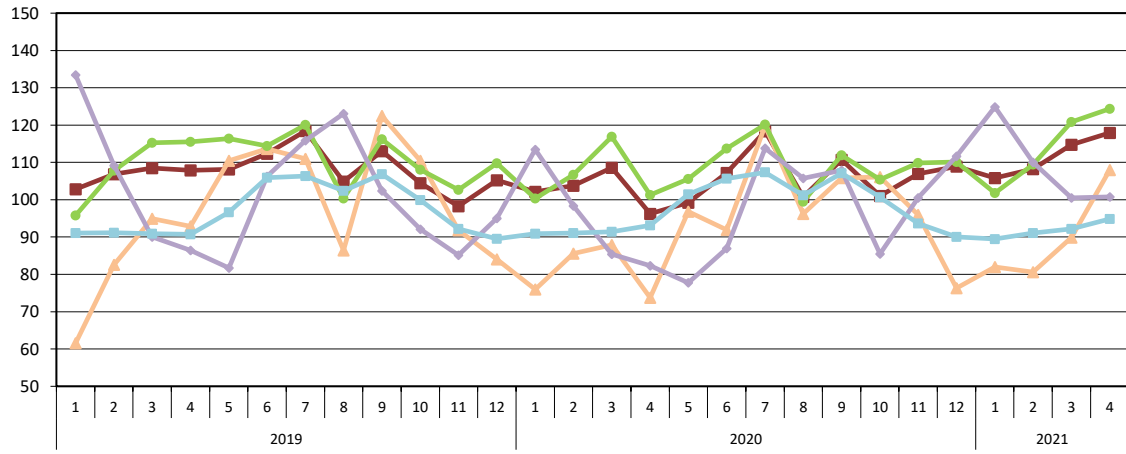
It should be noted that the time series with the seasonally adjusted indices is recalculated every time a new observation is added in the time series. Therefore, the seasonally adjusted data differ from the data published in the previous Press Release.

The following graphs depict the evolution of the seasonally adjusted Industrial Production Index and the Main Industrial Groupings, as well as the evolution of the Industrial Production Index and the Industrial Sections Indices.

**Graph 6. Evolution of the seasonally adjusted Industrial Production Index and the Main Industrial Groupings Indices, January 2020 - April 2021 (2015=100.0)**



**Graph 7. Evolution of the Industrial Production Index and the Industrial Section Indices  
(2015=100.0)**



**Table 1. Annual rates of change of the Industrial Production Index***(Working day adjusted data, according to the real number of working days)***Base year: 2015=100.0**

Code	Division	April			Rate of change (%)	
		2021*	2020*	2019	2021/2020	2020/2019
<b>OVERALL INDEX</b>		<b>117.89</b>	<b>96.26</b>	<b>107.85</b>	<b>22.5</b>	<b>-10.8</b>
<b>B</b>	<b>MINING AND QUARRYING</b>	<b>107.95</b>	<b>73.72</b>	<b>92.87</b>	<b>46.4</b>	<b>-20.6</b>
<b>05-06-09</b>	Mining of coal and lignite – Extraction of crude petroleum and natural gas – Mining support service activities	14.25	4.07	89.37	249.7	-95.4
<b>07</b>	Mining of metal ores	151.48	141.05	87.81	7.4	60.6
<b>08</b>	Other mining and quarrying	106.75	60.78	95.12	75.6	-36.1
<b>C</b>	<b>MANUFACTURING</b>	<b>124.37</b>	<b>101.25</b>	<b>115.50</b>	<b>22.8</b>	<b>-12.3</b>
<b>10</b>	Food	107.64	100.06	105.30	7.6	-5.0
<b>11</b>	Beverages	97.32	55.93	108.75	74.0	-48.6
<b>12</b>	Tobacco products	156.57	120.32	98.70	30.1	21.9
<b>13</b>	Textiles	125.54	79.54	115.55	57.8	-31.2
<b>14</b>	Wearing apparel	70.65	30.42	90.64	132.3	-66.4
<b>15</b>	Leather and related products	122.98	14.62	140.64	741.3	-89.6
<b>16</b>	Wood and products of wood and cork, except furniture	108.80	76.03	131.02	43.1	-42.0
<b>17</b>	Paper and paper products	120.04	110.87	106.02	8.3	4.6
<b>18</b>	Printing and reproduction of recorded products	116.74	101.38	107.00	15.2	-5.3
<b>19</b>	Coke and refined petroleum products	108.81	103.37	101.64	5.3	1.7
<b>20</b>	Chemicals and chemical products	140.83	115.65	139.31	21.8	-17.0
<b>21</b>	Basic pharmaceutical products and pharmaceutical preparations	225.34	198.30	169.62	13.6	16.9
<b>22</b>	Rubber and plastic products	133.82	111.55	124.77	20.0	-10.6
<b>23</b>	Other non-metallic mineral products	130.63	75.49	125.31	73.0	-39.8
<b>24</b>	Basic metals	125.25	104.58	134.86	19.8	-22.5
<b>25</b>	Fabricated metal products, except machinery and equipment	148.00	97.20	113.57	52.3	-14.4
<b>26</b>	Computers, electronic and optical products	192.30	160.18	181.98	20.0	-12.0
<b>27</b>	Electrical equipment	129.43	82.55	120.71	56.8	-31.6
<b>28</b>	Machinery and equipment n. e. c.	131.43	102.34	115.62	28.4	-11.5
<b>29</b>	Motor vehicles, trailers and semi-trailers	117.66	69.11	88.49	70.3	-21.9
<b>30</b>	Other transport equipment	86.35	53.97	61.51	60.0	-12.3
<b>31</b>	Furniture	129.24	62.21	152.47	107.7	-59.2
<b>32</b>	Other manufacturing	131.71	63.41	109.93	107.7	-42.3
<b>33</b>	Repair and installation of machinery and equipment	91.24	92.24	103.74	-1.1	-11.1
<b>D</b>	<b>ELECTRICITY SUPPLY</b>	<b>100.80</b>	<b>82.34</b>	<b>86.41</b>	<b>22.4</b>	<b>-4.7</b>
<b>35</b>	Electricity supply	100.80	82.34	86.41	22.4	-4.7
<b>E</b>	<b>WATER SUPPLY</b>	<b>94.87</b>	<b>93.13</b>	<b>90.75</b>	<b>1.9</b>	<b>2.6</b>
<b>36</b>	Water collection, treatment and supply	94.87	93.13	90.75	1.9	2.6
<b>MAIN INDUSTRIAL GROUPINGS</b>						
<b>1</b>	Energy	102.51	89.83	91.69	14.1	-2.0
<b>2</b>	Intermediate goods	123.72	93.08	118.80	32.9	-21.7
<b>3</b>	Capital goods	138.85	102.83	116.73	35.0	-11.9
<b>4</b>	Consumer Durables	112.16	59.57	126.87	88.3	-53.0
<b>5</b>	Consumer Non-Durables	126.70	106.61	115.57	18.8	-7.8

\* Provisional data

Note: The indices are rounded up to two decimal digits when published and percentage changes up to one decimal digit when published.

**Table 2. Average indices of the period January – April and rates of change (%) of the Industrial Production Index**  
(Working day adjusted data, according to the real number of working days)

Base year: 2015=100.0

Code	Division	Average indices of the period Jan.-Apr.			Rate of change (%)	
		2021*	2020*	2019	2021/2020	2020/2019
<b>OVERALL INDEX</b>		<b>111.65</b>	<b>102.69</b>	<b>106.50</b>	<b>8.7</b>	<b>-3.6</b>
<b>B</b>	<b>MINING AND QUARRYING</b>	<b>90.10</b>	<b>80.78</b>	<b>82.97</b>	<b>11.5</b>	<b>-2.6</b>
<b>05-06-09</b>	Mining of coal and lignite – Extraction of crude petroleum and natural gas – Mining support service activities	21.68	9.41	66.66	130.4	-85.9
<b>07</b>	Mining of metal ores	138.38	138.46	103.31	-0.1	34.0
<b>08</b>	Other mining and quarrying	83.55	71.43	78.37	17.0	-8.9
<b>C</b>	<b>MANUFACTURING</b>	<b>114.13</b>	<b>106.27</b>	<b>108.58</b>	<b>7.4</b>	<b>-2.1</b>
<b>10</b>	Food	102.48	101.96	99.96	0.5	2.0
<b>11</b>	Beverages	86.89	74.49	89.51	16.6	-16.8
<b>12</b>	Tobacco products	130.22	106.02	102.22	22.8	3.7
<b>13</b>	Textiles	118.43	95.30	108.58	24.3	-12.2
<b>14</b>	Wearing apparel	62.47	57.10	86.39	9.4	-33.9
<b>15</b>	Leather and related products	71.72	71.87	127.83	-0.2	-43.8
<b>16</b>	Wood and products of wood and cork, except furniture	93.00	93.06	103.85	-0.1	-10.4
<b>17</b>	Paper and paper products	113.86	114.06	104.45	-0.2	9.2
<b>18</b>	Printing and reproduction of recorded products	103.91	103.93	99.56	-0.02	4.4
<b>19</b>	Coke and refined petroleum products	104.30	102.66	107.27	1.6	-4.3
<b>20</b>	Chemicals and chemical products	130.90	126.99	127.34	3.1	-0.3
<b>21</b>	Basic pharmaceutical products and pharmaceutical preparations	202.33	183.24	157.67	10.4	16.2
<b>22</b>	Rubber and plastic products	124.83	113.89	118.29	9.6	-3.7
<b>23</b>	Other non-metallic mineral products	114.28	93.76	106.86	21.9	-12.3
<b>24</b>	Basic metals	127.76	118.44	129.98	7.9	-8.9
<b>25</b>	Fabricated metal products, except machinery and equipment	130.82	110.67	114.36	18.2	-3.2
<b>26</b>	Computers, electronic and optical products	178.07	158.12	138.06	12.6	14.5
<b>27</b>	Electrical equipment	118.46	93.76	100.81	26.3	-7.0
<b>28</b>	Machinery and equipment n. e. c.	106.40	95.80	101.54	11.1	-5.6
<b>29</b>	Motor vehicles, trailers and semi-trailers	89.47	98.77	74.26	-9.4	33.0
<b>30</b>	Other transport equipment	59.45	49.35	47.47	20.5	4.0
<b>31</b>	Furniture	99.85	94.27	109.76	5.9	-14.1
<b>32</b>	Other manufacturing	110.97	86.14	102.63	28.8	-16.1
<b>33</b>	Repair and installation of machinery and equipment	82.57	87.04	91.55	-5.1	-4.9
<b>D</b>	<b>ELECTRICITY SUPPLY</b>	<b>109.04</b>	<b>94.90</b>	<b>104.77</b>	<b>14.9</b>	<b>-9.4</b>
<b>35</b>	Electricity supply	109.04	94.90	104.77	14.9	-9.4
<b>E</b>	<b>WATER SUPPLY</b>	<b>91.90</b>	<b>91.65</b>	<b>90.95</b>	<b>0.3</b>	<b>0.8</b>
<b>36</b>	Water collection, treatment and supply	91.90	91.65	90.95	0.3	0.8
<b>MAIN INDUSTRIAL GROUPINGS</b>						
<b>1</b>	Energy	105.62	96.79	104.10	9.1	-7.0
<b>2</b>	Intermediate goods	115.79	105.25	109.74	10.0	-4.1
<b>3</b>	Capital goods	116.51	104.30	105.14	11.7	-0.8
<b>4</b>	Consumer Durables	89.97	82.04	96.74	9.7	-15.2
<b>5</b>	Consumer Non-Durables	115.53	108.45	107.72	6.5	0.7

\* Provisional data

Note: The indices are rounded up to two decimal digits when published and percentage changes up to one decimal digit when published.

**Table 3. Monthly rate of change of the Industrial Production Index***(Working day adjusted data, according to the real number of working days)***Base year: 2015=100.0**

Code	Division	April 2021*	March 2021**	Rate of change (%) Apr. 2021/ Mar. 2021
<b>OVERALL INDEX</b>		<b>117.89</b>	<b>114.72</b>	<b>2.8</b>
<b>B</b>	<b>MINING AND QUARRYING</b>	<b>107.95</b>	<b>89.85</b>	<b>20.1</b>
05-06-09	Mining of coal and lignite – Extraction of crude petroleum and natural gas – Mining support service activities	14.25	21.86	-34.8
07	Mining of metal ores	151.48	129.94	16.6
08	Other mining and quarrying	106.75	86.05	24.1
<b>C</b>	<b>MANUFACTURING</b>	<b>124.37</b>	<b>120.85</b>	<b>2.9</b>
10	Food	107.64	106.84	0.8
11	Beverages	97.32	94.22	3.3
12	Tobacco products	156.57	129.37	21.0
13	Textiles	125.54	129.39	-3.0
14	Wearing apparel	70.65	60.42	16.9
15	Leather and related products	122.98	78.36	56.9
16	Wood and products of wood and cork, except furniture	108.80	104.31	4.3
17	Paper and paper products	120.04	115.57	3.9
18	Printing and reproduction of recorded products	116.74	104.21	12.0
19	Coke and refined petroleum products	108.81	103.36	5.3
20	Chemicals and chemical products	140.83	141.63	-0.6
21	Basic pharmaceutical products and pharmaceutical preparations	225.34	219.38	2.7
22	Rubber and plastic products	133.82	129.85	3.1
23	Other non-metallic mineral products	130.63	110.06	18.7
24	Basic metals	125.25	135.49	-7.6
25	Fabricated metal products, except machinery and equipment	148.00	156.51	-5.4
26	Computers, electronic and optical products	192.30	203.39	-5.5
27	Electrical equipment	129.43	132.96	-2.7
28	Machinery and equipment n. e. c.	131.43	117.99	11.4
29	Motor vehicles, trailers and semi-trailers	117.66	88.36	33.2
30	Other transport equipment	86.35	67.21	28.5
31	Furniture	129.24	111.10	16.3
32	Other manufacturing	131.71	116.66	12.9
33	Repair and installation of machinery and equipment	91.24	99.42	-8.2
<b>D</b>	<b>ELECTRICITY SUPPLY</b>	<b>100.80</b>	<b>100.50</b>	<b>0.3</b>
35	Electricity supply	100.80	100.50	0.3
<b>E</b>	<b>WATER SUPPLY</b>	<b>94.87</b>	<b>92.16</b>	<b>2.9</b>
36	Water collection, treatment and supply	94.87	92.16	2.9
<b>MAIN INDUSTRIAL GROUPINGS</b>				
1	Energy	102.51	100.37	2.1
2	Intermediate goods	123.72	122.50	1.0
3	Capital goods	138.85	135.99	2.1
4	Consumer Durables	112.16	99.97	12.2
5	Consumer Non-Durables	126.70	121.17	4.6

\* Provisional data \*\* Revised data

*Note: The indices are rounded up to two decimal digits when published and percentage changes up to one decimal digit when published.*



**Table 4. Monthly rate of change of the seasonally adjusted Industrial Production Index**

**Base year: 2015=100.0**

Code	Division	April 2021	March 2021	Rate of change (%) Apr. 2021/ Mar. 2021
<b>OVERALL INDEX</b>		<b>118.48</b>	<b>113.54</b>	<b>4.4</b>
<b>B</b>	<b>MINING AND QUARRYING</b>	<b>107.55</b>	<b>97.83</b>	<b>9.9</b>
05-06-09	Mining of coal and lignite – Extraction of crude petroleum and natural gas – Mining support service activities	-	-	-
07	Mining of metal ores	150.54	128.16	17.5
08	Other mining and quarrying	107.04	96.99	10.4
<b>C</b>	<b>MANUFACTURING</b>	<b>118.94</b>	<b>116.00</b>	<b>2.5</b>
10	Food	106.83	103.94	2.8
11	Beverages	97.60	102.40	-4.7
12	Tobacco products	154.34	127.60	21.0
13	Textiles	118.65	119.40	-0.6
14	Wearing apparel	66.75	63.06	5.8
15	Leather and related products	92.18	56.44	63.3
16	Wood and products of wood and cork, except furniture	101.25	101.65	-0.4
17	Paper and paper products	114.63	111.72	2.6
18	Printing and reproduction of recorded products	108.55	99.53	9.1
19	Coke and refined petroleum products	109.90	103.45	6.2
20	Chemicals and chemical products	124.65	124.23	0.3
21	Basic pharmaceutical products and pharmaceutical preparations	210.21	200.67	4.8
22	Rubber and plastic products	126.53	119.62	5.8
23	Other non-metallic mineral products	124.56	108.77	14.5
24	Basic metals	127.81	128.25	-0.3
25	Fabricated metal products, except machinery and equipment	144.11	145.99	-1.3
26	Computers, electronic and optical products	182.60	187.51	-2.6
27	Electrical equipment	117.27	121.21	-3.3
28	Machinery and equipment n. e. c.	117.80	111.56	5.6
29	Motor vehicles, trailers and semi-trailers	146.14	91.80	59.2
30	Other transport equipment	77.31	67.58	14.4
31	Furniture	109.57	110.51	-0.8
32	Other manufacturing	120.60	117.92	2.3
33	Repair and installation of machinery and equipment	85.16	86.74	-1.8
<b>D</b>	<b>ELECTRICITY SUPPLY</b>	<b>120.09</b>	<b>109.45</b>	<b>9.7</b>
35	Electricity supply	120.09	109.45	9.7
<b>E</b>	<b>WATER SUPPLY</b>	<b>98.73</b>	<b>98.89</b>	<b>-0.2</b>
36	Water collection, treatment and supply	98.73	98.89	-0.2
<b>MAIN INDUSTRIAL GROUPINGS</b>				
1	Energy	114.59	105.82	8.3
2	Intermediate goods	118.66	116.70	1.7
3	Capital goods	131.17	127.96	2.5
4	Consumer Durables	100.18	102.18	-2.0
5	Consumer Non-Durables	120.64	117.19	2.9

*Notes:*

1. The indices are rounded up to two decimal digits when published and percentage changes up to one decimal digit when published.
2. The whole time-series with seasonally adjusted indices is recalculated every time a new observation is added in the time-series.
3. The composed index of divisions 05-06-09 is not seasonally adjusted, due to the fact that it is calculated from January 2015 and thus the number of observations is not adequate.

**Table 5. Evolution of the Overall Industrial Production Index***(Working day adjusted data, according to the real number of working days)***Base year: 2015=100.0**

Year and month	Overall Index	Monthly rate of change (%)	Annual rate of change (%)	12-month average index (moving average)	Rate of change of the 12-month average index (%)
<b>2019:</b> 1	102.78	-6.0	4.1	108.61	2.0
2	106.85	4.0	1.9	108.78	2.2
3	108.50	1.5	-0.6	108.73	2.1
4	107.85	-0.6	2.6	108.96	2.0
5	108.13	0.3	-0.4	108.92	1.9
6	112.35	3.9	-0.5	108.88	1.8
7	118.42	5.4	-2.0	108.67	1.2
8	104.92	-11.4	-0.03	108.67	1.3
9	113.05	7.7	1.9	108.85	1.1
10	104.43	-7.6	-0.7	108.79	1.1
11	98.28	-5.9	-9.6	107.91	-0.1
12	105.24	7.1	-3.8	107.57	-0.7
<b>Annual average</b>	<b>107.57</b>				
<b>2020*:</b> 1	102.17	-2.9	-0.6	107.52	-1.0
2	103.80	1.6	-2.9	107.26	-1.4
3	108.53	4.6	0.03	107.27	-1.3
4	96.26	-11.3	-10.8	106.30	-2.4
5	99.25	3.1	-8.2	105.56	-3.1
6	107.19	8.0	-4.6	105.13	-3.4
7	118.32	10.4	-0.1	105.12	-3.3
8	100.77	-14.8	-4.0	104.77	-3.6
9	110.70	9.8	-2.1	104.58	-3.9
10	100.99	-8.8	-3.3	104.29	-4.1
11	106.94	5.9	8.8	105.01	-2.7
12	108.91	1.8	3.5	105.32	-2.1
<b>Annual average</b>	<b>105.32</b>				
<b>2021*:</b> 1	105.80	-2.9	3.6	105.62	-1.8
2	108.19	2.3	4.2	105.99	-1.2
3	114.72	6.0	5.7	106.50	-0.7
4	117.89	2.8	22.5	108.31	1.9

\* Provisional data

*Note: The indices are rounded up to two decimal digits when published and percentage changes up to one decimal digit when published.*

**Table 6. Monthly evolution of the seasonally adjusted Overall Industrial Production Index and Main Industrial Groupings**

Base year: 2015=100.0

Year and month	Overall Index		Energy		Intermediate goods		Capital goods		Consumer durables		Consumer non-durables		
	Index	Monthly rate of change (%)	Index	Monthly rate of change (%)	Index	Monthly rate of change (%)	Index	Monthly rate of change (%)	Index	Monthly rate of change (%)	Index	Monthly rate of change (%)	
<b>2019:</b>	1	110.34	0.1	114.13	2.8	108.05	0.2	105.45	-1.3	98.66	-8.0	109.42	-2.5
	2	109.64	-0.6	107.65	-5.7	110.89	2.6	114.32	8.4	102.05	3.4	110.21	0.7
	3	107.40	-2.0	99.90	-7.2	112.20	1.2	114.16	-0.1	106.01	3.9	111.04	0.7
	4	108.65	1.2	102.75	2.9	113.94	1.5	112.18	-1.7	109.75	3.5	110.70	-0.3
	5	107.02	-1.5	98.80	-3.8	111.68	-2.0	113.36	1.1	106.39	-3.1	111.71	0.9
	6	107.12	0.1	105.70	7.0	107.26	-4.0	111.95	-1.2	105.32	-1.0	107.55	-3.7
	7	106.56	-0.5	101.13	-4.3	108.49	1.1	108.04	-3.5	109.37	3.8	111.09	3.3
	8	108.58	1.9	109.07	7.8	107.56	-0.9	112.16	3.8	96.41	-11.9	108.44	-2.4
	9	109.46	0.8	103.47	-5.1	110.86	3.1	116.13	3.5	105.25	9.2	114.05	5.2
	10	107.64	-1.7	101.40	-2.0	111.47	0.6	112.63	-3.0	109.05	3.6	110.81	-2.8
	11	101.76	-5.5	90.19	-11.1	106.63	-4.3	107.99	-4.1	115.62	6.0	109.61	-1.1
	12	106.24	4.4	94.93	5.3	109.26	2.5	117.19	8.5	108.63	-6.0	114.53	4.5
	<b>Annual average</b>	<b>107.53</b>		<b>102.43</b>		<b>109.86</b>		<b>112.13</b>		<b>106.04</b>		<b>110.76</b>	
<b>2020:</b>	1	110.52	4.0	101.23	6.6	114.56	4.9	121.04	3.3	120.66	11.1	115.31	0.7
	2	106.68	-3.5	95.37	-5.8	112.53	-1.8	117.16	-3.2	111.73	-7.4	112.80	-2.2
	3	107.42	0.7	98.13	2.9	112.72	0.2	108.76	-7.2	96.86	-13.3	114.72	1.7
	4	97.45	-9.3	100.49	2.4	89.26	-20.8	99.77	-8.3	52.65	-45.6	101.77	-11.3
	5	98.82	1.4	96.46	-4.0	98.71	10.6	102.26	2.5	67.94	29.0	102.42	0.6
	6	102.16	3.4	95.34	-1.2	103.93	5.3	108.99	6.6	99.72	46.8	107.35	4.8
	7	106.37	4.1	100.28	5.2	110.28	6.1	118.95	9.1	119.37	19.7	106.73	-0.6
	8	105.27	-1.0	95.42	-4.9	113.96	3.3	111.06	-6.6	106.69	-10.6	108.81	2.0
	9	107.06	1.7	97.38	2.1	111.83	-1.9	113.67	2.4	103.14	-3.3	113.49	4.3
	10	104.01	-2.8	88.58	-9.0	112.42	0.5	117.25	3.2	102.24	-0.9	112.72	-0.7
	11	110.65	6.4	102.94	16.2	117.15	4.2	118.04	0.7	99.07	-3.1	113.56	0.7
	12	110.33	-0.3	104.17	1.2	117.04	-0.1	112.66	-4.6	96.94	-2.1	112.62	-0.8
	<b>Annual average</b>	<b>105.56</b>		<b>97.98</b>		<b>109.53</b>		<b>112.47</b>		<b>98.08</b>		<b>110.19</b>	
<b>2021:</b>	1	113.89	3.2	108.13	3.8	120.11	2.6	116.06	3.0	97.48	0.6	116.30	3.3
	2	111.22	-2.4	103.03	-4.7	115.16	-4.1	114.58	-1.3	100.87	3.5	117.68	1.2
	3	113.54	2.1	105.82	2.7	116.70	1.3	127.96	11.7	102.18	1.3	117.19	-0.4
	4	118.48	4.4	114.59	8.3	118.66	1.7	131.17	2.5	100.18	-2.0	120.64	2.9

**Notes:**

1. The indices are rounded up to two decimal digits when published and percentage changes up to one decimal digit when published.
2. The whole time-series with seasonally adjusted indices is recalculated every time a new observation is added in the time-series.

## METHODOLOGICAL NOTES

<b>Generally</b>	The Industrial Production Index (IPI) in Greece has been compiled by the Hellenic Statistical Authority (ELSTAT) from 1959 onwards.
<b>Purpose of the index</b>	The objective of the index is to compare the magnitude (volume) of the output in the current month in the mining and quarrying, manufacturing, electricity and water supply divisions with the corresponding output of a given fixed period, which is considered as base period. The Industrial Production Index shows the evolution of the value added of the production factors cost, at constant prices.
<b>Legal framework</b>	The compilation of the IPI is based on the framework of the implementation of Council Regulation (EC) No 1165/1998 concerning short-term statistics (STS-R). Furthermore, the IPI is governed by Regulation (EC) No 1893/2006 of the European Parliament and of the Council, by Commission Regulation (EC) No 656/2007, by Council Regulation (EC) No 451/2008, by Regulation (EU) No 2019/2152 of the European Parliament and of the Council on European business statistics, as well as Commission Implementing Regulation (EU) No 2020/1197 laying down technical specifications and arrangements pursuant to Regulation (EU) No 2019/2152.
<b>Reference period</b>	Month.
<b>Base year</b>	2015=100.0.
<b>Revision</b>	The IPI is a fixed base index. The Industrial Production Index was currently revised with new base year 2015 (2015=100.0) according to the provisions of Council Regulation No 1165/1998 concerning short-term statistics. Short-term indices are revised every five (5) years, particularly in calendar years ending in 0 or 5.
<b>Statistical classifications</b>	At the level of branches of economic activities, the statistical classification of economic activities NACE Rev.2 of EU was used (Regulation No 1893/2006), while at the level of main industrial groupings, the allocation of two-digit and three-digit NACE Rev. 2 headings to categories of aggregate classification was used, in accordance with Council Regulation No 656/2007. At product level, the statistical classification CPA 2008 of EU was used, according to Council Regulation No 451/2008.
<b>Geographical coverage</b>	The index covers the whole Country.
<b>Coverage of economic activities</b>	The index covers all the sections of industry, the main industrial groups, as well as all levels of economic activity.
<b>Statistical survey</b>	The data are collected from a sample of 1,263 enterprises. The survey covers 325 products and the measurement of the surveyed products is made in terms of output quantities or in terms of production value or turnover, according to the specific features in each branch of economic activity.
<b>Data collection and processing in the context of the COVID-19 pandemic</b>	<p>The compilation of the indices was mainly based on data collected by the enterprises (via web-based application, email), as well as data from administrative sources. In order to deal with missing data for products measured in terms of output quantities, appropriate estimation methods were applied on a case-by-case basis. The estimation is made at product per enterprise level, either on the basis of the annual rate of change in the turnover of the enterprise producing the product, or on the basis of the average annual rate of change in the quantity produced by the other enterprises, for which data were collected during the reference month (ratio imputation).</p> <p>For April 2021 there was no significant change in the data collection compared to previous reference months.</p>
<b>Seasonal adjustment</b>	<p>Seasonal adjustment is the procedure followed to remove the impact of seasonality on the time-series (i.e. the impact of monthly effects, e.g. holidays, tourist period etc.), in order to improve comparability over time. The method applied is TRAMO-SEATS with the use of JDemetra+ 2.0.0.</p> <p>For the seasonal adjustment of the Industrial Production Index at 2-digit level of NACE Rev.2, at section level (B – Mining and Quarrying, C – Manufacturing, D – Electricity and E – Water Supply) and for the Main Industrial Groupings (MIGs), the direct approach is applied, namely each time-series is seasonally adjusted independently. For the overall Industrial Production Index, the indirect approach is applied, with the seasonally adjusted IPI being computed by aggregating the seasonally adjusted MIGs using appropriate weights.</p>

- Seasonal adjustment in the context of the COVID-19 pandemic** The COVID-19 outbreak has a severe impact on several economic activities. Given the fact that, calendar and seasonal adjustment corresponds to predictable and recurrent phenomena, the impact of COVID-19 pandemic, as an extraordinary phenomenon, shall not be included in the calendar or seasonal component of the time-series.
- According to the methodological recommendations and guidance of the European Statistical Service (Eurostat) on time-series treatment in the context of the COVID-19 pandemic, this impact is strongly suggested to be treated as outlier and be included in the trend-cycle component or in the irregular, depending on the type of outlier.
- During the seasonal adjustment of time-series for April 2021, outliers were determined (additive outliers) in cases where it was deemed appropriate, based on statistical criteria and economic information. As new observations become available and are added in the time-series, the type of outliers may change (from additive outlier to a transitory change or a level shift), depending on the evolution of the phenomenon, which may result in significant revisions, only to the already published seasonally adjusted data (Tables 4 and 6 and Graphs 1, 4, 5 and 6).
- Publication of data** The revised IPI with the new base year 2015 (2015=100.0) is released since July 2019, with May 2019 as the first reference month. Data with base year 2015=100.0 are available from January 2000 onwards.
- References** More information about the methodology concerning the compilation and calculation of the index and the time series are available on the website of the Hellenic Statistical Authority (ELSTAT) (<http://www.statistics.gr/en/statistics/-/publication/DKT21/>).