

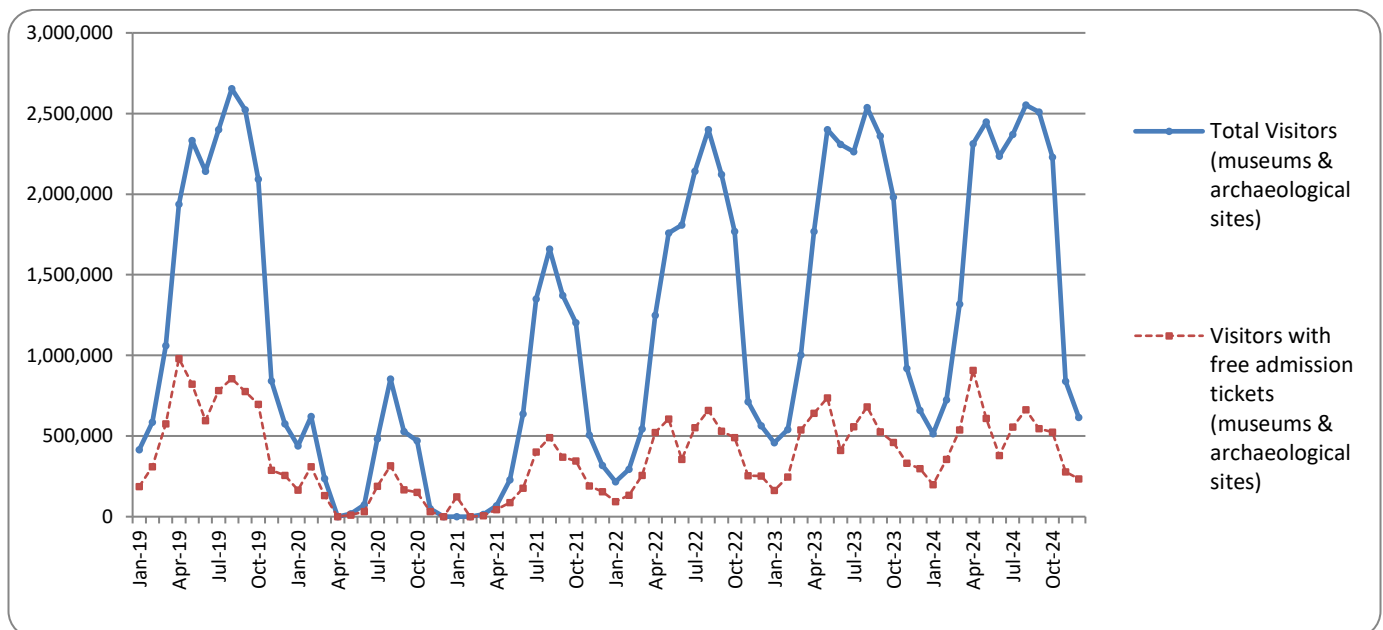


SURVEY ON MUSEUMS AND ARCHAEOLOGICAL SITES ATTENDANCE DECEMBER 2024

The Hellenic Statistical Authority (ELSTAT) announces the results of the *Survey on Museums and Archaeological Sites Attendance* for December 2024. More specifically:

- During December 2024 compared with the corresponding month of 2023, museums recorded a decrease of 3.8% in the number of visitors, of 12.9% in the number of free admission visitors and an increase of 53.3% in their receipts (Table 1).
- As regards archaeological sites, in December 2024 compared with the corresponding month of 2023, a decrease of 8.2% was recorded in the number of visitors, of 29.0% in the number of free admission visitors and an increase of 8.1% in the corresponding receipts (Table 1).
- During the twelve month period from January to December 2024, compared with the corresponding period of 2023, an increase of 14.7% was recorded in the number of visitors of museums, of 2.5% in the number of free admission visitors and of 22.3% in the relevant receipts (Table 2).
- As regards archaeological sites, during the twelve month period from January to December 2024, compared with the corresponding period of 2023, an increase of 4.5% was recorded in the number of visitors, of 4.1% in the number of free admission visitors and of 4.7% in the relevant receipts (Table 2).

Graph 1: Visitors of Museums and Archaeological sites (January 2019 – December 2024)



Information on methodological issues:

Sectoral Statistics Division
Tourism and Culture Statistics Section
Head of Section: Eleni Papadopoulou
Tel: +30 213 135 2168
e-mail: e.papadopoulou@statistics.gr

Information for data provision:

Tel. +30 213 135 2022, 2308, 2310
e-mail: data.dissem@statistics.gr

**TABLE 1: VISITORS OF MUSEUMS AND ARCHAEOLOGICAL SITES - TOTAL RECEIPTS
(DECEMBER 2023 & DECEMBER 2024)**

I. NUMBER OF VISITORS			
Museums and Archaeological sites	2023	2024	Change 2024/2023
Total number of visitors (A+B)	658,432	616,208	-6.4%
A. Museums (C+E)	270,993	260,649	-3.8%
Acropolis Museum	81,797	80,568	-1.5%
National Archaeological	30,254	30,372	0.4%
Ancient Olympia ⁽³⁾	1,451	2,837	95.5%
Palace of the Grand Master (Rhodes) ⁽²⁾	5,446	4,629	-15.0%
Heraklion Archaeological (Crete)	9,786	7,589	-22.5%
White Tower	19,444	17,743	-8.7%
Delphi ⁽³⁾	8,530	14,442	69.3%
Other museums ⁽²⁾	114,285	102,469	-10.3%
B. Archaeological Sites (D+F)	387,439	355,559	-8.2%
Epidavros ⁽¹⁾	12,603	13,904	10.3%
The Acropolis of Mycenae & Atreus' Treasure	13,609	15,146	3.9%
The Acropolis of Athens	157,784	166,907	5.8%
Sounio	16,132	14,488	-10.2%
The Acropolis of Lindos	1,986	1,093	-45.0%
Royal Tombs of Vergina	20,928	11,643	-44.4%
Ancient Olympia ⁽³⁾	6,412	4,191	-34.6%
Knossos (Crete)	18,144	8,576	-52.7%
Phaistos (Crete)	640	730	14.1%
Ancient Korinthos ⁽¹⁾	5,470	5,476	0.1%
Mystras ⁽¹⁾	4,894	4,101	-16.2%
Delphi ⁽³⁾	18,570	8,422	-54.6%
Other archaeological sites ⁽²⁾	110,267	100,882	-7.6%
II. VISITORS WHO PAID TICKET			
	2023	2024	Change 2024/2023
Total number of visitors who paid ticket (C+D)	360,263	381,857	6.0%
C. Museums ⁽²⁾	130,383	138,236	6.0%
D. Archaeological sites ⁽²⁾	229,880	243,621	6.0%
III. VISITORS WITH FREE ADMISSION TICKETS			
	2023	2024	Change 2024/2023
Total number of visitors with free admission ticket (E+F)	298,169	234,351	-21.4%
E. Museums	140,610	122,413	-12.9%
F. Archaeological sites	157,559	111,938	-29.0%
IV. RECEIPTS (euros)			
	2023	2024	Change 2024/2023
Total Receipts (G+H)	2,872,540	3,501,414	21.9%
G. Museums	875,437	1,341,932	53.3%
H. Archaeological sites	1,997,103	2,159,482	8.1%

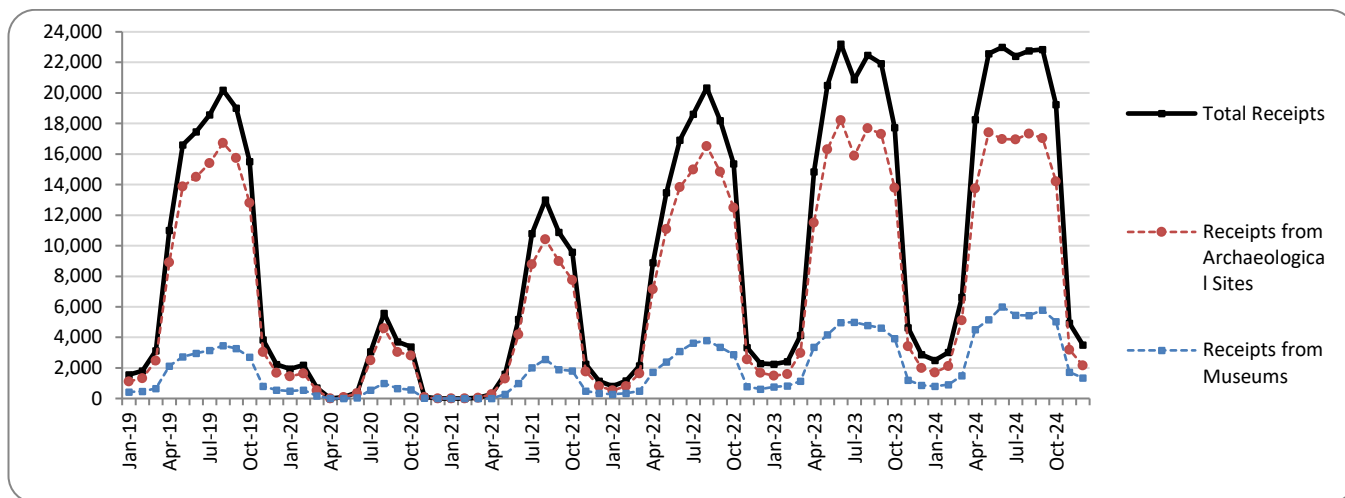
⁽¹⁾ Flat rate ticket, valid both for the museum and the archaeological site.

⁽²⁾ Revised data for 2023, due to the transmission of updated data from administrative sources.

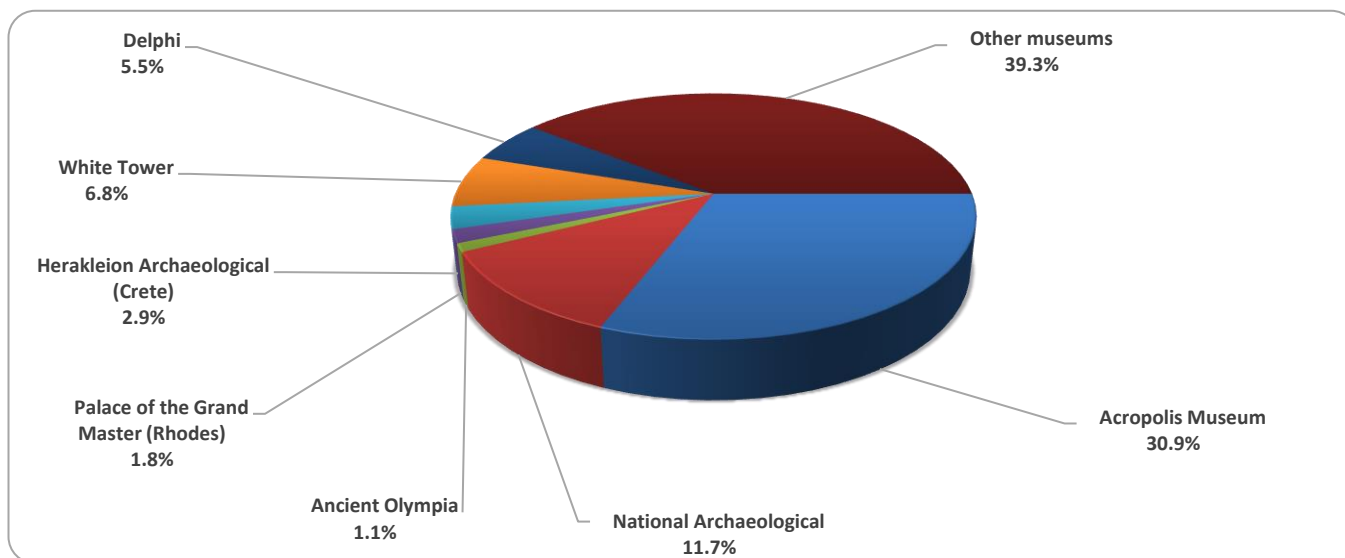
⁽³⁾ Since April 2024, it has been possible to purchase tickets online from the museums of Ancient Olympia and Delphi, with the possibility of visiting the corresponding archaeological site, without it being possible to distinguish between museum and archaeological site visits.

The following graphs depict the evolution of the receipts of Museums and Archaeological Sites (Graph 2), as well as the number of visitors by Museum (Graph 3) and by Archaeological Site (Graph 4).

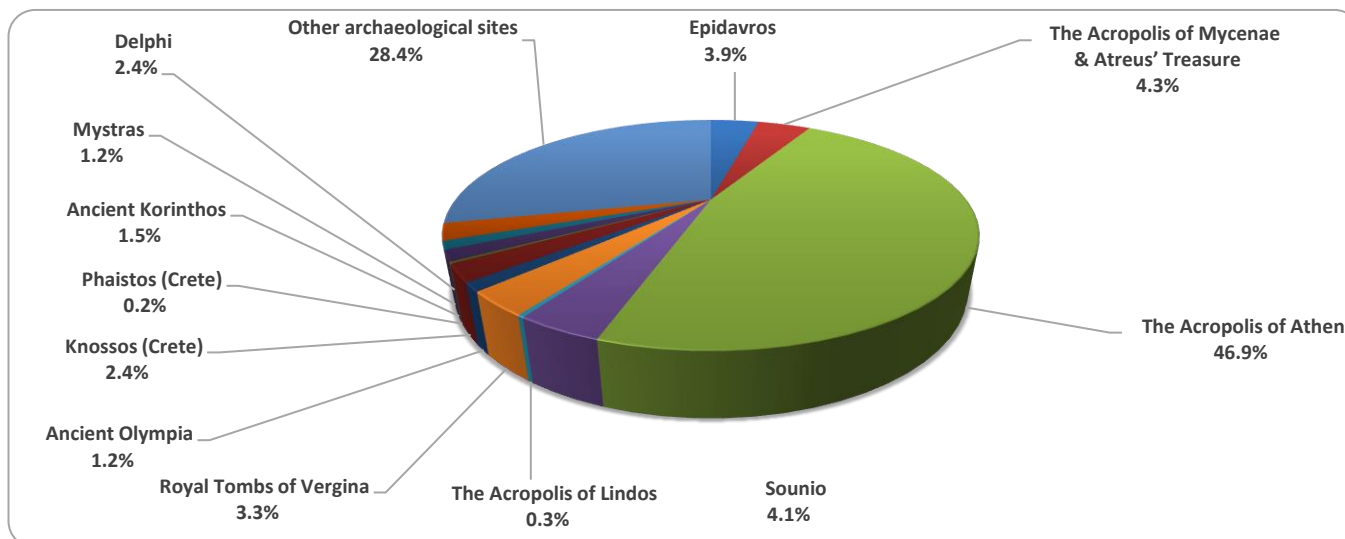
Graph 2: Receipts from Museums and Archaeological Sites (January 2019 – December 2024)
(in thousand euro)



Graph 3: Percentage distribution of visitors by Museum, December 2024



Graph 4: Percentage distribution of visitors by Archaeological site, December 2024



**TABLE 2: VISITORS OF MUSEUMS AND ARCHAEOLOGICAL SITES - TOTAL RECEIPTS
(2022, 2023, JANUARY – DECEMBER 2023, 2024)**

I. VISITORS				
Museums and Archaeological sites	2022	JANUARY- DECEMBER		change
		2023	2024	2024/2023
Total number of visitors (A+B)	15,583,552	19,210,752	20,661,682	7.6%
A. Museums (C+E)	4,636,901	5,801,812	6,651,800	14.7%
Acropolis Museum	1,397,353	1,900,950	1,994,251	4.9%
National Archaeological	474,821	642,318	642,956	0.1%
Ancient Olympia ⁽³⁾	85,179	85,410	286,519	235.5%
Palace of the Grand Master (Rhodes) ⁽²⁾	263,521	342,607	370,055	8.0%
Herakleion Archaeological (Crete)	249,715	294,839	379,363	28.7%
White Tower ⁽²⁾	193,916	259,775	239,767	-7.7%
Delphi ⁽³⁾	151,512	203,445	445,188	118.8%
Other museums ⁽²⁾	1,820,884	2,072,468	2,293,701	10.7%
B. Archaeological Sites (D+F)	10,946,651	13,408,940	14,009,882	4.5%
Epidavros ⁽¹⁾	393,077	525,982	548,971	4.4%
The Acropolis of Mycenae & Atreus' Treasure	372,448	510,507	547,361	7.2%
The Acropolis of Athens	3,019,841	3,958,405	4,557,693	15.1%
Sounio	314,506	393,927	421,556	7.0%
The Acropolis of Lindos	596,331	629,089	702,363	11.6%
Royal Tombs of Vergina	168,444	202,122	244,013	20.7%
Ancient Olympia ⁽³⁾	338,365	481,211	301,987	-37.2%
Knossos (Crete)	831,320	959,110	1,010,006	5.3%
Phaistos (Crete)	74,817	79,934	84,637	5.9%
Ancient Korinthos ⁽¹⁾	153,616	210,465	253,085	20.3%
Mystras ⁽¹⁾	139,512	151,508	153,789	1.5%
Delphi ⁽³⁾	332,870	482,293	292,619	-39.3%
Other archaeological sites ⁽²⁾	4,211,504	4,824,387	4,891,802	1.4%
II. VISITORS WHO PAID TICKET				
	2022	JANUARY- DECEMBER		change
		2023	2024	2024/2023
Total number of visitors who paid ticket (C+D)	10,877,516	13,614,885	14,869,717	9.2%
C. Museums ⁽²⁾	2,883,216	3,690,912	4,489,130	21.6%
D. Archaeological site ⁽²⁾	7,994,300	9,923,973	10,380,587	4.6%
III. VISITORS WITH FREE ADMISSION TICKETS				
	2023	JANUARY- DECEMBER		change
		2023	2024	2024/2023
Total number of visitors with free admission ticket (E+F)	4,706,036	5,595,867	5,791,965	3.5%
E. Museums ⁽²⁾	1,753,685	2,110,900	2,162,670	2.5%
F. Archaeological sites	2,952,351	3,484,967	3,629,295	4.1%
IV. RECEIPTS (euros)				
	2023	JANUARY- DECEMBER		change
		2023	2024	2024/2023
Total Receipts (G+H)	121,535,113	157,852,657	171,679,802	8.7%
G. Museums	23,361,465	35,617,601	43,687,210	22.3%
H. Archaeological sites	98,173,648	122,235,056	127,992,592	4.7%

⁽¹⁾ Flat rate ticket, valid both for the museum and the archaeological site.

⁽²⁾ Revised data for 2023, due to the transmission of updated data from administrative sources.

⁽³⁾ Since April 2024, it has been possible to purchase tickets online from the museums of Ancient Olympia and Delphi, with the possibility of visiting the corresponding archaeological site, without it being possible to distinguish between museum and archaeological site visits.

EXPLANATORY NOTES

Survey on Museums and Archaeological Sites Attendance	<p>The Survey on Museums and Archaeological Sites Attendance has been producing results since 1970. The survey collects data from the Hellenic Organization of Cultural Resources Development (HOCRED), supervised by the Ministry of Culture and Sports, on the number of visitors and the receipts from the tickets sold in the Museums and Archaeological sites of the country. The corresponding data for the Acropolis Museum is available from December 2009 onwards.</p>
Legal Framework	<p>The survey is conducted since 1970 on a regular basis and it produces results on a monthly and yearly basis, in compliance with the Joint Ministerial Decision 15189/B379/73.</p>
Reference Period	<p>1/12/2024 - 31/12/2024</p>
Methodology and Definitions	<p>The survey is conducted on a monthly basis from data mainly collected from the Hellenic Organization of Cultural Resources Development (HOCRED), supervised by the Ministry of Culture and Sports, on the number of visitors and the receipts from the tickets sold in the Museums and Archaeological sites of the Country. ELSTAT tabulates and presents the data for the whole of the Country, by month and by year.</p> <p>Number of flat rate tickets:</p> <p>From April 1999 onwards, in some museums and the nearby archaeological sites, in addition to the ordinary ticket, a new “flat rate ticket” was established, which is valid for both the museum and the nearby archaeological site. The total number of these flat rate tickets for December 2024 was 15,607</p>
References	<p>More information on the Survey on Museums and Archaeological Sites Attendance and detailed time series are available on: http://www.statistics.gr/en/statistics/-/publication/SCI21/</p>