



PRESS RELEASE

SURVEY ON SECONDARY VOCATIONAL EDUCATION END OF SCHOOL YEAR 2019/2020

The Hellenic Statistical Authority (ELSTAT) announces data on Secondary Vocational Education (Vocational Upper Secondary Schools (EPAL) and the Vocational Schools (EPAS)) deriving from the relevant survey for the end of the school year 2019/2020. The survey results can be summarized as follows:

- The **school units** remained the same between school years 2018/2019 and 2019/2020 (Table 2).
- **Teaching staff** in the school year 2019/2020 compared with the corresponding number in the school year 2018/2019, increased from 13,151 to 13,574 (Table 2).
- **The number of pupils enrolled** in the school year 2019/2020, compared with the corresponding number in the school year 2018/2019, increased from 103,440 to 109,625 (Table 3).
- **The number of graduates** in the school year 2019/20 compared with the corresponding number in the school year 2018/2019, increased from 23,007 to 28,669 (Table 3).
- **The ratio of teaching staff to pupils**, in the school year 2019/2020, was 1 teacher for 8.1 pupils, while the corresponding ratio in the school year 2018/2019 was 1 teacher for 7.9 pupils (Tables 2 and 3).
- The **Region of Attiki** in the school year 2019/2020 accounted for 27.3% of the total pupil population of all the EPAL and EPAS in Greece (Graph 4).

Information on methodological issues:

Division of Sectoral Statistics
Section of Education & Sports Statistics
Head of the Section: Antonios Kritikos
Tel: +30 213 135 2134, 2782
e-mail: a.kritikos@statistics.gr

Information for data provision:

Tel. +30 213 135 2022, 2310
email: data.dissem@statistics.gr

More specifically, Table 1 and Graph 1 depict the evolution of pupil population in Secondary Vocational Education during the period 2010/2011 to 2019/2020.

Table 1
Evolution of pupil population in Secondary Vocational Education
2010/11 – 2019/20

School Year	Pupils Enrolled
2010/2011	113,658
2011/2012	121,008
2012/2013	123,989
2013/2014	109,917
2014/2015	101,761
2015/2016	98,772
2016/2017	98,568
2017/2018	97,452
2018/2019	103,440
2019/2020	109,625

Graph 1
Evolution of pupil population in Secondary Vocational Education
2010/11 – 2019/20

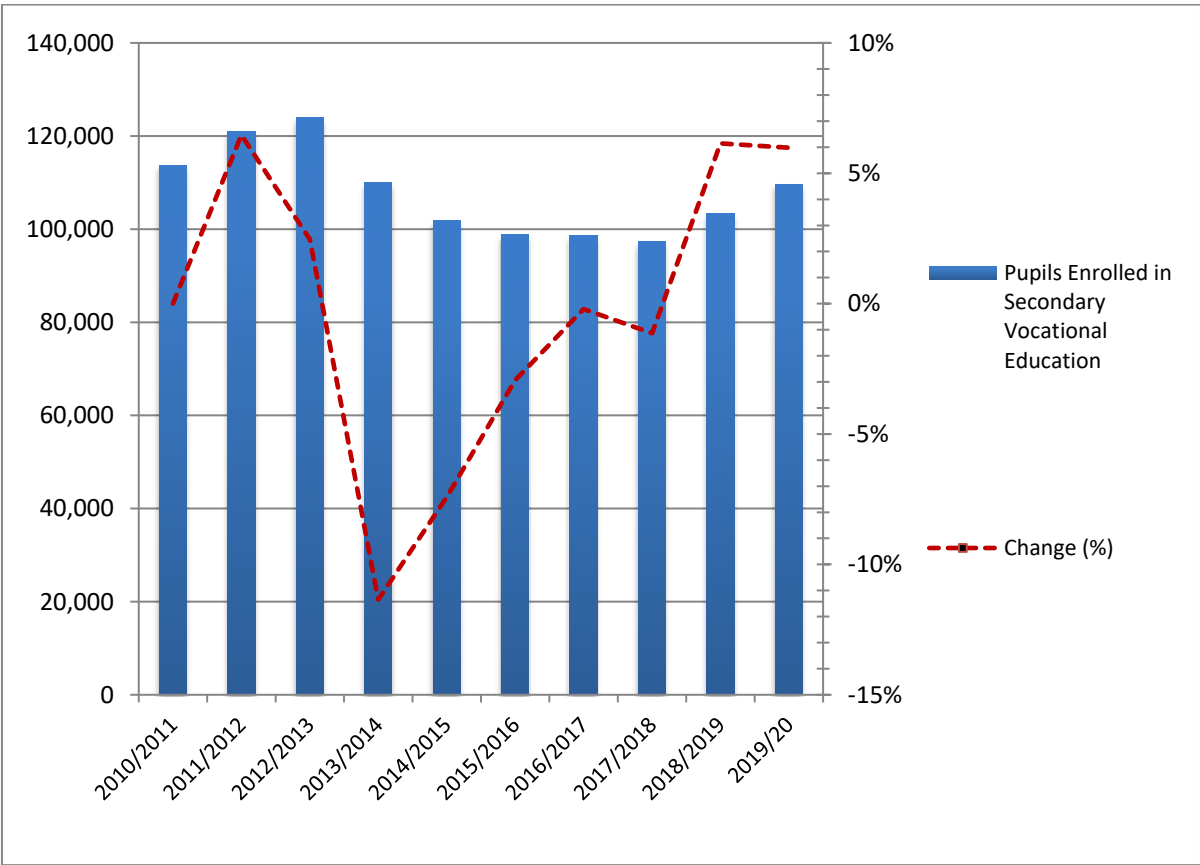


Table 2 presents data on the number of the school units and teaching staff for school years 2018/2019 and 2019/2020.

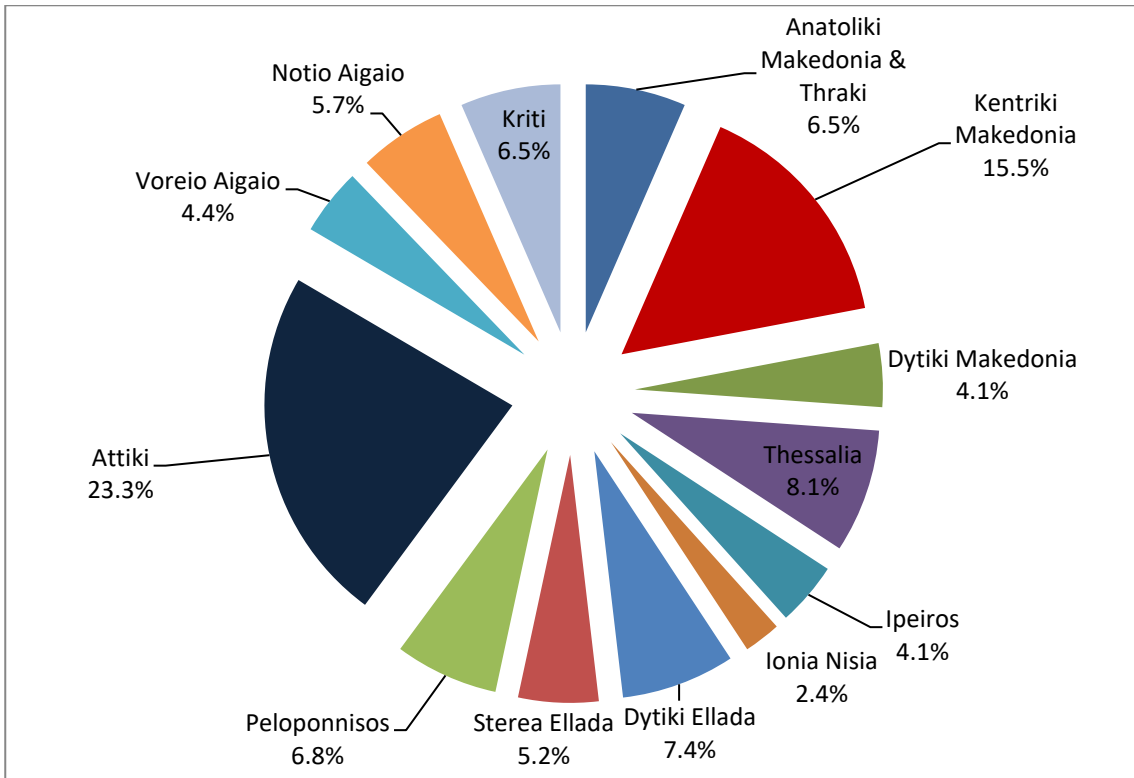
Table 2. Number of school units and teaching staff¹

<i>By Type of school unit</i>						
School units	Number of school units			Teaching staff		
	2018/19	2019/20	Change (%)	2018/19	2019/20	Change (%)
EPAL of the Ministry of Education and Religious Affairs	403	403	0.0	11,602	12,074	4.1
EPAS of the Ministry of Labour and Social Affairs	50	50	0.0	1,488	1,437	-3.4
EPAS of the Ministry of Rural Development and Food	6	6	0.0	61	63	3.3
TOTAL	459	459	0.0	13,151	13,574	3.2
<i>By Region</i>						
Region (NUTS 2)	Number of school units			Teaching staff		
	2018/19	2019/20	Change (%)	2018/19	2019/120	Change (%)
Anatoliki Makedonia, Thraki	30	30	0.0	861	889	3.3
Kentriki Makedonia	71	71	0.0	2,425	2,550	5.2
Dytiki Makedonia	19	19	0.0	566	589	4.1
Thessalia	37	37	0.0	1,113	1,121	0.7
Ipeiros	19	19	0.0	498	502	0.8
Ionia Nisia	11	11	0.0	246	255	3.7
Dytiki Ellada	34	34	0.0	842	840	-0.2
Stereia Ellada	24	24	0.0	589	617	4.8
Peloponnisos	31	31	0.0	639	649	1.6
Attiki	107	107	0.0	3,273	3,347	2.3
Voreio Aigaio	20	20	0.0	465	481	3.4
Notio Aigaio	26	26	0.0	651	672	3.2
Kriti	30	30	0.0	983	1,062	8
TOTAL	459	459	0.0	13,151	13,574	3.2

¹ Absent teachers are also included.

Absent teachers are the teachers with a fixed post in the school unit, who are absent for more than 20 days (due to illness, training, maternity leave, etc) and their replacement is pending, as well as the teachers who are seconded to other administrative posts of the Ministry of Education and Religious Affairs or elsewhere.

Graph 2. Percentage distribution of school units by NUTS 2 region, school year 2019/20



Graph 3. Teaching staff by NUTS 2 region, school year 2019/20

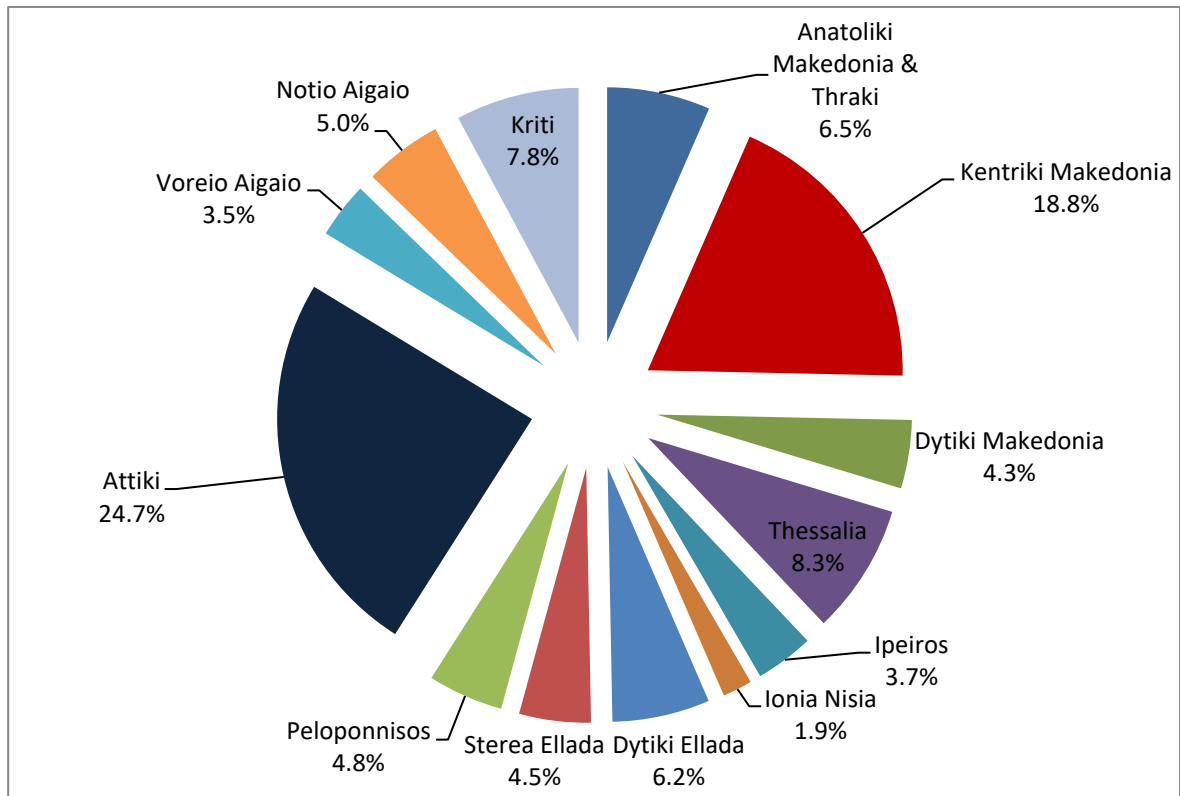
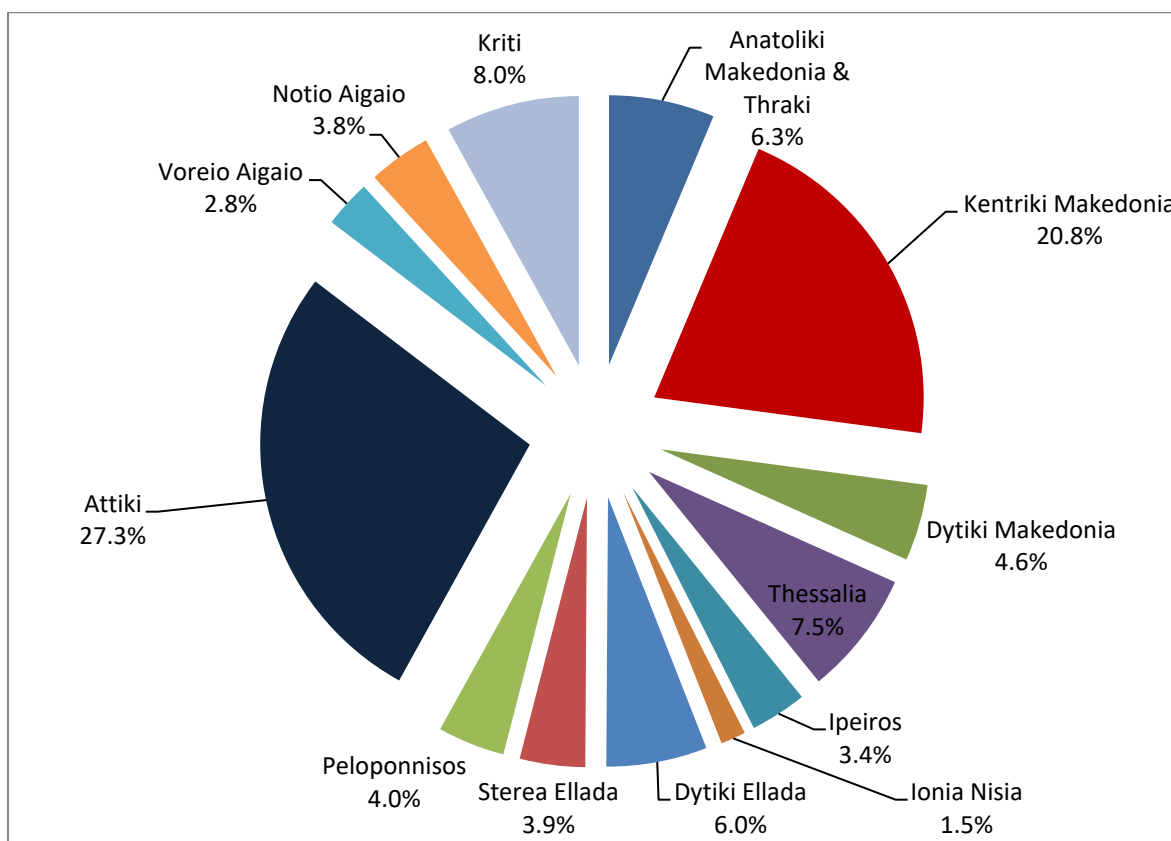


Table 3 presents data on the number of enrolled pupils and graduates for school years 2018/2019 and 2019/2020.

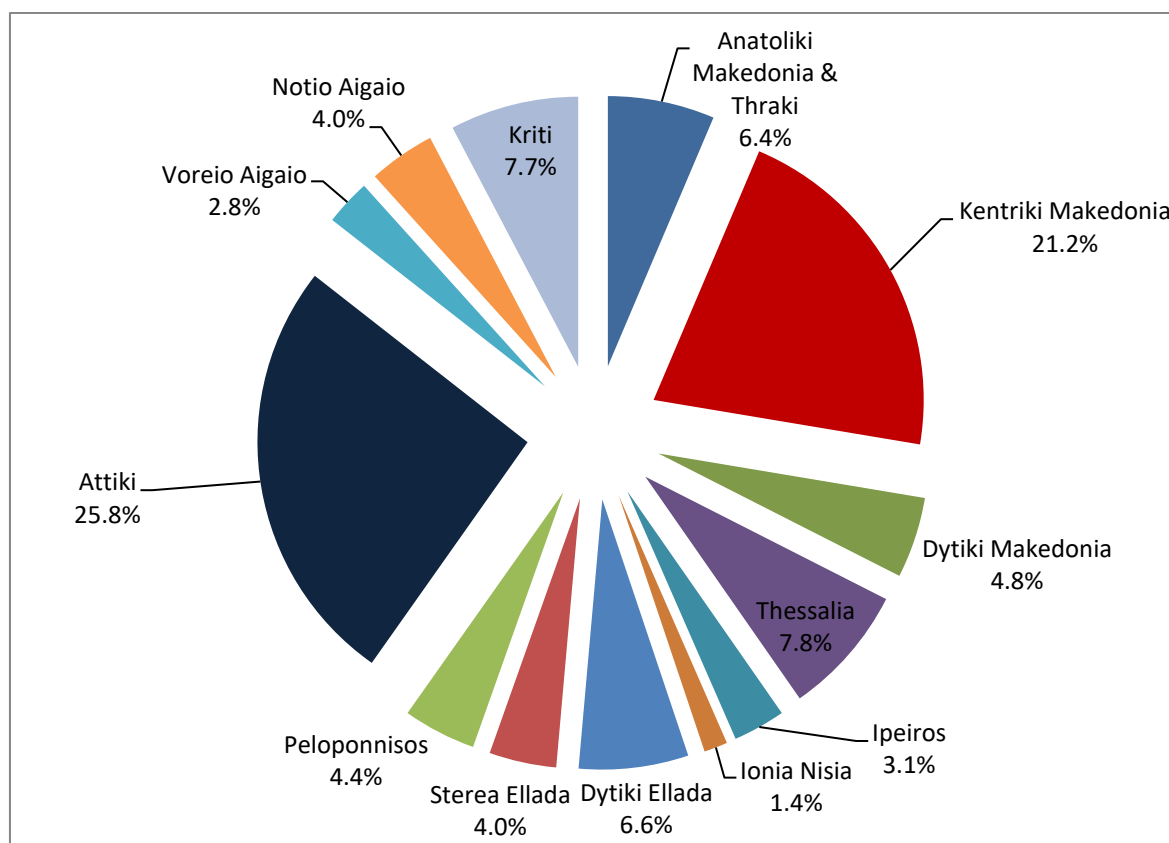
Table 3. Pupils enrolled and graduates by type of school unit and region

<i>By Type of School Unit</i>						
School units	Pupils enrolled			Graduates		
	2018/19	2019/20	Change (%)	2018/19	2019/20	Change (%)
EPAL of the Ministry of Education and Religious Affairs	95,212	101,601	6.7	19,515	25,460	30.5
EPAS of the Ministry of Labour and Social Affairs	8,000	7,804	-2.5	3,322	3,069	-7.6
EPAS of the Ministry of Rural Development and Food	228	220	-3.5	170	140	-17.6
TOTAL	103,440	109,625	6.0	23,007	28,669	24.6
<i>By Region</i>						
Region (NUTS 2)	Pupils enrolled			Graduates		
	2018/19	2019/20	Change (%)	2018/19	2019/20	Change (%)
Anatoliki Makedonia, Thraki	6,443	6,945	7.8	1,512	1,833	21.2
Kentriki Makedonia	21,539	22,789	5.8	4,660	6,090	30.7
Dytiki Makedonia	5,000	5,021	0.4	1,267	1,389	9.6
Thessalia	7,570	8,183	8.1	1,684	2,246	33.4
Ipeiros	3,398	3,711	9.2	839	895	6.7
Ionia Nisia	1,586	1,643	3.6	345	404	17.1
Dytiki Ellada	6,348	6,630	4.4	1,606	1,880	17.1
Stereia Ellada	4,005	4,300	7.4	758	1,153	52.1
Peloponnisos	4,371	4,417	1.1	924	1,250	35.3
Attiki	28,292	29,932	5.8	6,227	7,390	18.7
Voreio Aigaio	2,941	3,117	6.0	605	790	30.6
Notio Aigaio	3,934	4,129	5.0	771	1,141	48.0
Kriti	8,013	8,808	9.9	1,809	2,208	22.1
TOTAL	103,440	109,625	6.0	23,007	28,669	24.6

Graph 4. Pupils enrolled by NUTS 2 region, school year 2019/20

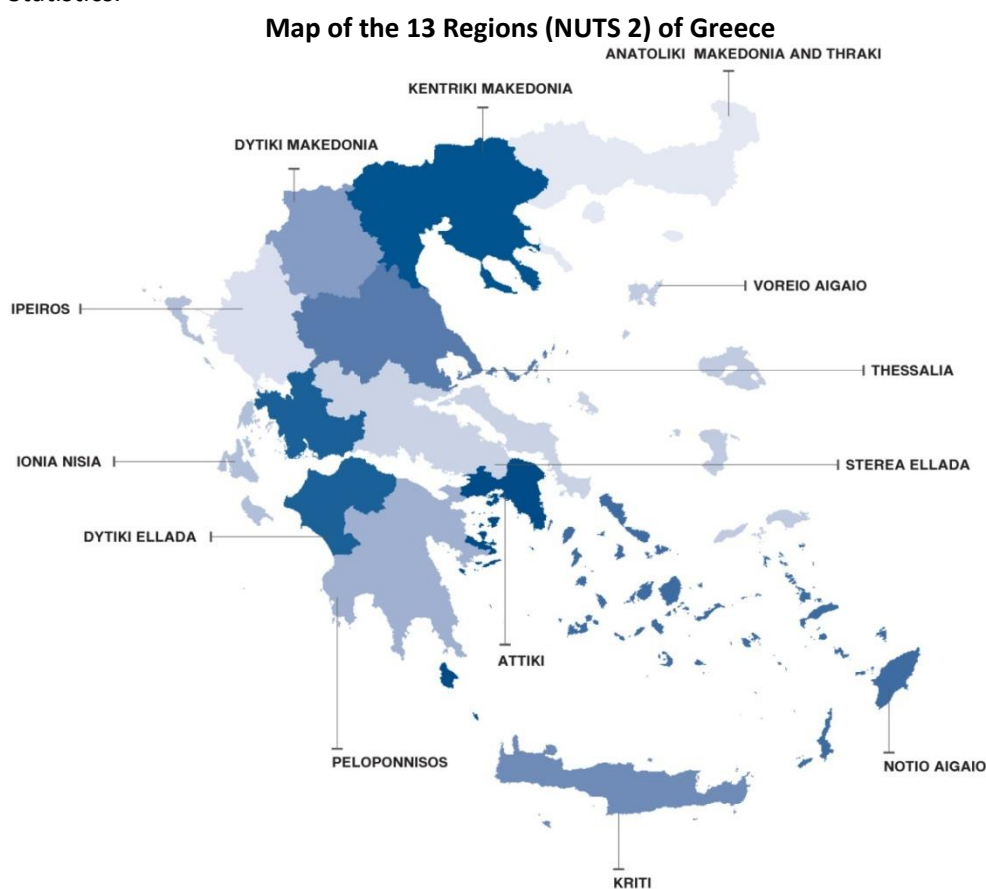


Graph 5. Graduates by NUTS 2 region, school year 2019/20



EXPLANATORY NOTES

Survey on Secondary Vocational Education	Secondary Vocational Education includes: <ul style="list-style-type: none">- the Vocational Upper Secondary Schools (EPAL)- the Vocational Schools (EPAS) EPAL and EPAS are under the competency of the Ministry of Education and Religious Affairs, the Ministry of Rural Development and Food and the Ministry of Labour and Social Affairs. Since the school year 2014/2015, public EPAS of the Ministry of Education and Religious Affairs were abolished, while private EPAS under the supervision of the Ministry of Education and Religious Affairs are still under operation. The survey is conducted on a yearly basis, by all Member States of the European Union, aiming at collecting data on the number of pupils enrolled, the school units and the number of the teaching staff.
Legal Frame	The survey is conducted by virtue of Regulation 452/2008 of the European Parliament and the Council and implementing Regulation 912/2013 of the European Commission.
Statistical Units	The statistical units are the school units.
Coverage	Greece total.
Geographical Classification	The geographical classification is based on Nomenclature of Territorial Units for Statistics.



- Dissemination of results** The data are posted on a yearly basis on the website of ELSTAT.
- Reference period** The data of the surveys refer to the end of school year 2019/2020. For comparability reasons, the data of the end of the previous school year 2018/2019 are also provided.
- Methodology and coverage** Until the school year 2013/2014, the survey on Secondary Vocational Education used to be a census, yearly survey and it was conducted by ELSTAT. From the school year 2014/2015 onwards, the data of the survey are collected as follows:
- As regards public school units of the Ministry of Education and Religious Affairs (EPAL), the data were extracted from the “live” e-platform “MySchool” of the Ministry of Education and Religious Affairs.
 - As regards public school units which are not under the competency of the Ministry of Education and Religious Affairs, data were collected via an annual census survey with the use of questionnaires.
 - As regards private school units, the data were collected via an annual census survey with the use of questionnaires.
- References** More information on the Survey on Secondary Vocational Education, such as tables with the survey’s results, samples of questionnaires, etc., can be found on the webpage of ELSTAT www.statistics.gr and at the link: “Statistics”/ Population and Social Conditions / Education /Secondary Vocational Education”.