



PRESS RELEASE

SURVEY ON SECONDARY VOCATIONAL EDUCATION END OF SCHOOL YEAR 2016/2017

The Hellenic Statistical Authority (ELSTAT) announces data on Secondary Vocational Education deriving from the relevant survey for the end of the school year 2016/2017. The survey results can be summarized as follows:

- The **school units**, which were surveyed during the school year 2016/2017, amounted to 454 in comparison with 455 in the school year 2015/2016 (Table 2 and Graphs 2 and 3).
- **Teaching staff** in the school year 2016/2017 decreased by 3.4% in comparison with the school year 2015/2016 (Table 2 and Graphs 4 and 5).
- **The number of pupils enrolled** in the school year 2016/2017 compared with 2015/2016 decreased from 98,772 to 98,568 (Table 3 and Graphs 6 and 7).
- **The number of graduates** in the school year 2016/2017 increased by 13.4% in comparison with the school year 2015/2016 (Table 3 and Graphs 8 and 9).
- **The ratio of teaching staff to pupils**, in the school year 2016/2017, was 1 teacher for 7.8 pupils, while in the school year 2015/2016 the corresponding ratio was 1 to 7.6 (Tables 2 and 3).
- The **Region of Attiki** in the school year 2016/2017 accounted for 26.9% of the total pupil population of all the EPAS and EPAL¹ in Greece (Graph 7).

Information:

Social Statistics Division

Education Statistics Section

Evdokia Oikonomou, Antonis Kritikos, Maria Kritikou

Tel: +30 213 135 2134, +30 213135 2778, +30 213 135 2782

Fax: +30 213 135 2780

e-mail: evd.oikonomou@statistics.gr

a.kritikos@statistics.gr

m.kritikou@statistics.gr

¹ Secondary Vocational Education (formal and non formal) in Greece includes the Vocational Upper Secondary Schools (EPAL) and the Vocational Schools (EPAS)

More specifically, Table 1 and Graph 1 depict the evolution of pupil population in Secondary Vocational Education during the period 2007/2008 to 2016/2017.

Table 1
Evolution of pupil population in Secondary Vocational Education
2007/08 – 2016/17

School Year	Pupils Enrolled
2007/2008	108,729
2008/2009	108,010
2009/2010	110,771
2010/2011	113,658
2011/2012	121,008
2012/2013	123,989
2013/2014	109,917
2014/2015	101,761
2015/2016	98,772*
2016/2017	98,568

*Revised data

Graph 1
Evolution of pupil population in Secondary Vocational Education
2007/08 – 2016/17

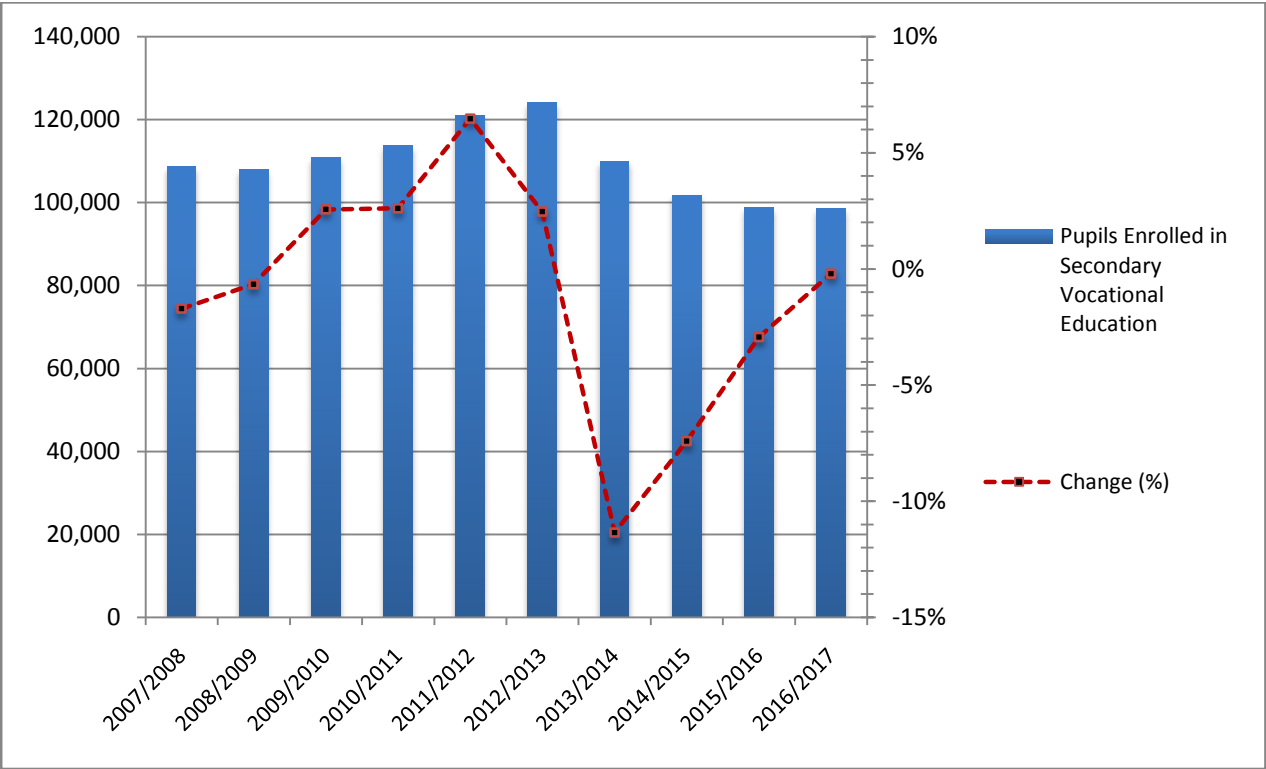


Table 2 presents data on the number of the school units and teaching staff for the school years 2015/2016 and 2016/2017 .

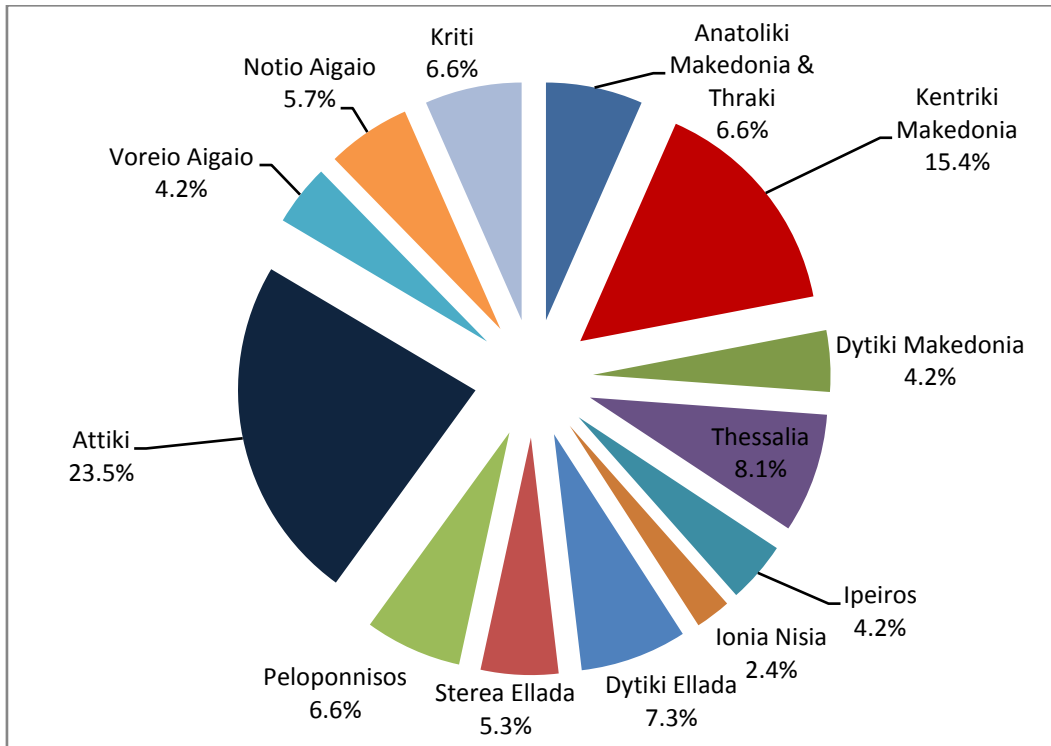
Table 2. Number of school units and teaching staff²

<i>By Type of school unit</i>						
School units	Number of school units			Teaching staff		
	2015/16	2016/17	Change (%)	2015/16	2016/17	Change (%)
EPAL of the Ministry of Education, Research and Religious Affairs	398	398	0.0	11,465	11,021	-3.9
EPAS of the Ministry of Labour, Social Security and Social Solidarity	51	50	-2.0	1,491	1,484	-0.5
EPAS of the Ministry of Rural Development and Food	6	6	0.0	58	63	8.6
TOTAL	455	454	-0.2	13,014	12,568	-3.4
<i>By Region</i>						
Region (NUTS 2)	Number of school units			Teaching staff		
	2015/16	2016/17	Change (%)	2015/16	2016/17	Change (%)
Anatoliki Makedonia, Thraki	30	30	0.0	809	821	1.5
Kentriki Makedonia	70	70	0.0	2,436	2,332	-4.3
Dytiki Makedonia	19	19	0.0	592	585	-1.2
Thessalia	37	37	0.0	1,082	1,081	-0.1
Ipeiros	19	19	0.0	484	476	-1.7
Ionia Nisia	11	11	0.0	270	260	-3.7
Dytiki Ellada	33	33	0.0	879	846	-3.8
Stereia Ellada	24	24	0.0	611	550	-10.0
Peloponnisos	30	30	0.0	665	630	-5.3
Attiki	107	107	0.0	3,173	3,038	-4.3
Voreio Aigaio	19	19	0.0	423	413	-2.4
Notio Aigaio	26	26	0.0	627	599	-4.5
Kriti	30	29	-3.3	963	937	-2.7
TOTAL	455	454	-0.2	13,014	12,568	-3.4

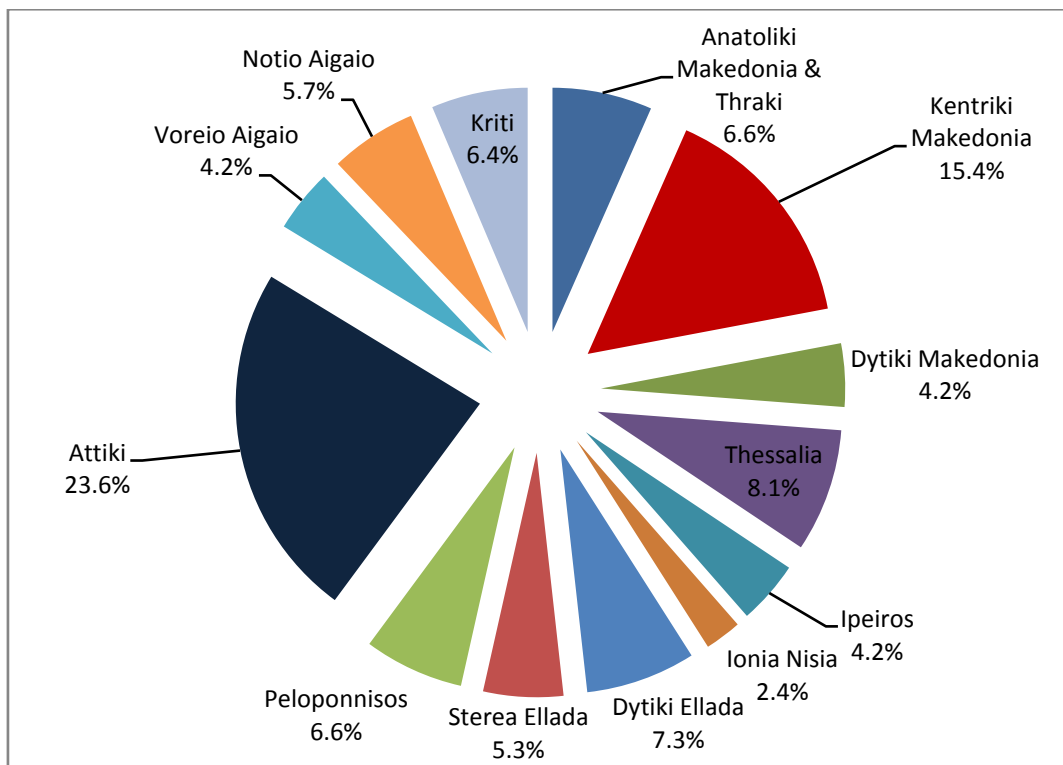
² Absent teachers are also included.

Absent teachers are the teachers with a fixed post in the school unit, who are absent for more than 20 days (due to illness, training, maternity leave, etc) and their replacement is pending, as well as the teachers who are seconded to other administrative posts of the Ministry of Education, Research and Religious Affairs or elsewhere.

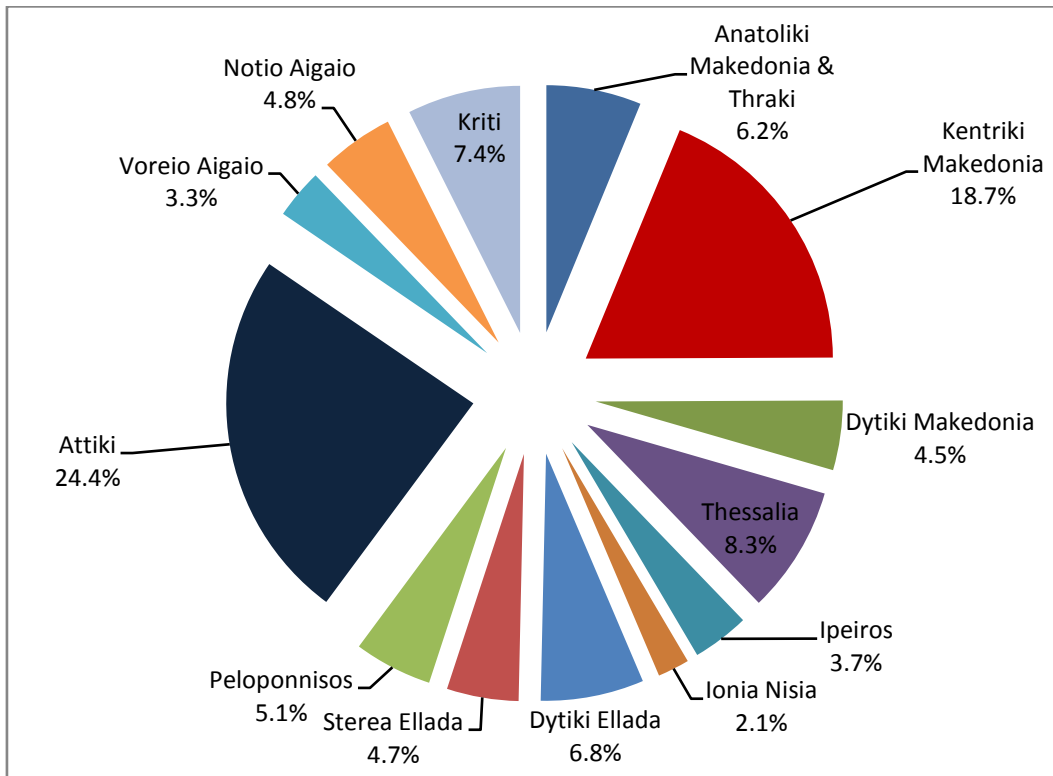
Graph 2. Percentage distribution of school units by NUTS 2 region, school year 2015/16



Graph 3. Percentage distribution of school units by NUTS 2 region, school year 2016/17



Graph 4. Teaching staff by NUTS 2 region, school year 2015/16



Graph 5. Teaching staff by NUTS 2 region, school year 2016/17

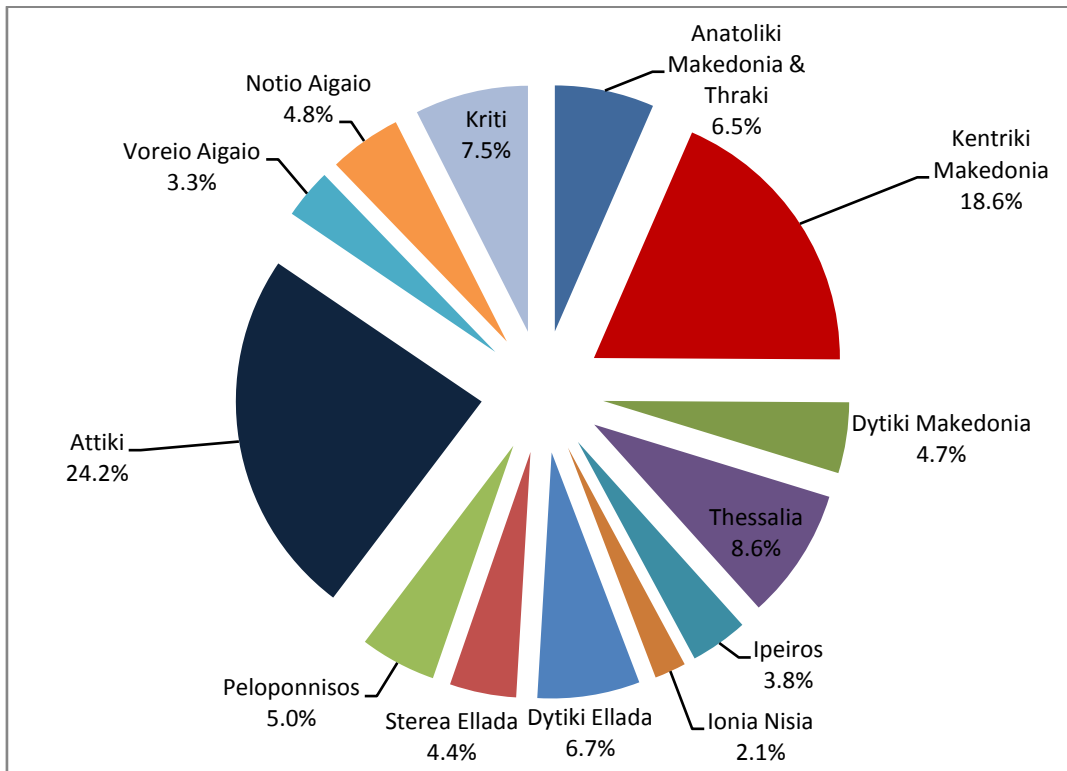


Table 3 presents data on the number of enrolled pupils and graduates for the school years 2015/2016 and 2016/2017.

Table 3. Pupils enrolled and graduates by type of school unit and region

<i>By Type of School Unit</i>						
School units	Pupils enrolled			Graduates		
	2015/16	2016/17	Change (%)	2015/16	2016/17	Change (%)
EPAL of the Ministry of Education, Research and Religious Affairs	88,901	88,695	-0.2	21,592*	24,316	12.6
EPAS of the Ministry of Labour, Social Security and Social Solidarity	9,578*	9,597	0.2	3,371*	4,019	19.2
EPAS of the Ministry of Rural Development and Food	293	276	-5.8	171	160	-6.4
TOTAL	98,772	98,568	-0.2	25,134	28,495	13.4
<i>By Region</i>						
Region (NUTS 2)	Pupils enrolled			Graduates		
	2015/16	2016/17	Change (%)	2015/16*	2016/17	Change (%)
Anatoliki Makedonia, Thraki	6,503	6,348	-2.4	1,830	1,967	7.5
Kentriki Makedonia	19,644	19,752	0.5	4,943	5,712	15.6
Dytiki Makedonia	5,093	5,218	2.5	1,305	1,627	24.7
Thessalia	7,158	7,254	1.3	1,949	2,188	12.3
Ipeiros	2,847	3,037	6.7	804	862	7.2
Ionia Nisia	1,839	1,774	-3.5	434	511	17.7
Dytiki Ellada	6,468	6,394	-1.1	1,730	1,940	12.1
Stereia Ellada	4,041	3,938	-2.5	1,121	1,295	15.5
Peloponnisos	4,509	4,159	-7.8	1,289	1,292	0.2
Attiki	26,918	26,559	-1.3	6,375	7,153	12.2
Voreio Aigaio	2,755	2,828	2.6	661	801	21.2
Notio Aigaio	3,705	3,714	0.2	993	1,113	12.1
Kriti	7,292	7,593	4.1	1,700	2,034	19.6
TOTAL	98,772	98,568	-0.2	25,134	28,495	13.4

*Revised data.

Chart 6. Pupils enrolled by NUTS 2 region, school year 2015/16

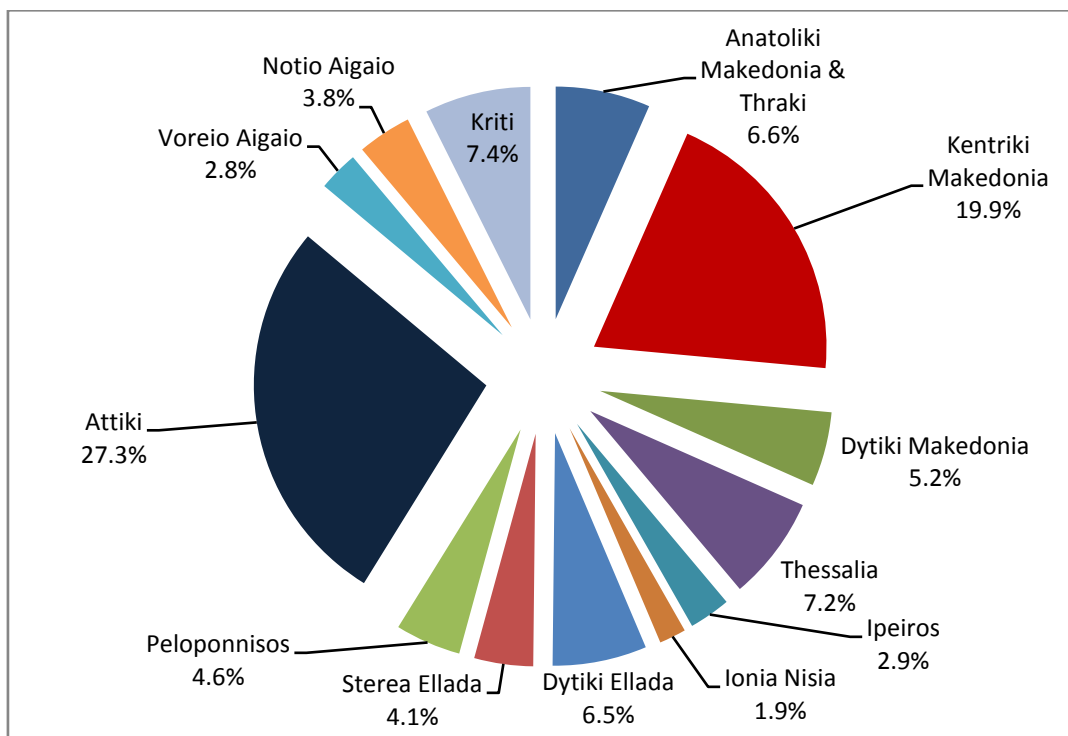


Chart 7. Pupils enrolled by NUTS 2 region, school year 2016/17

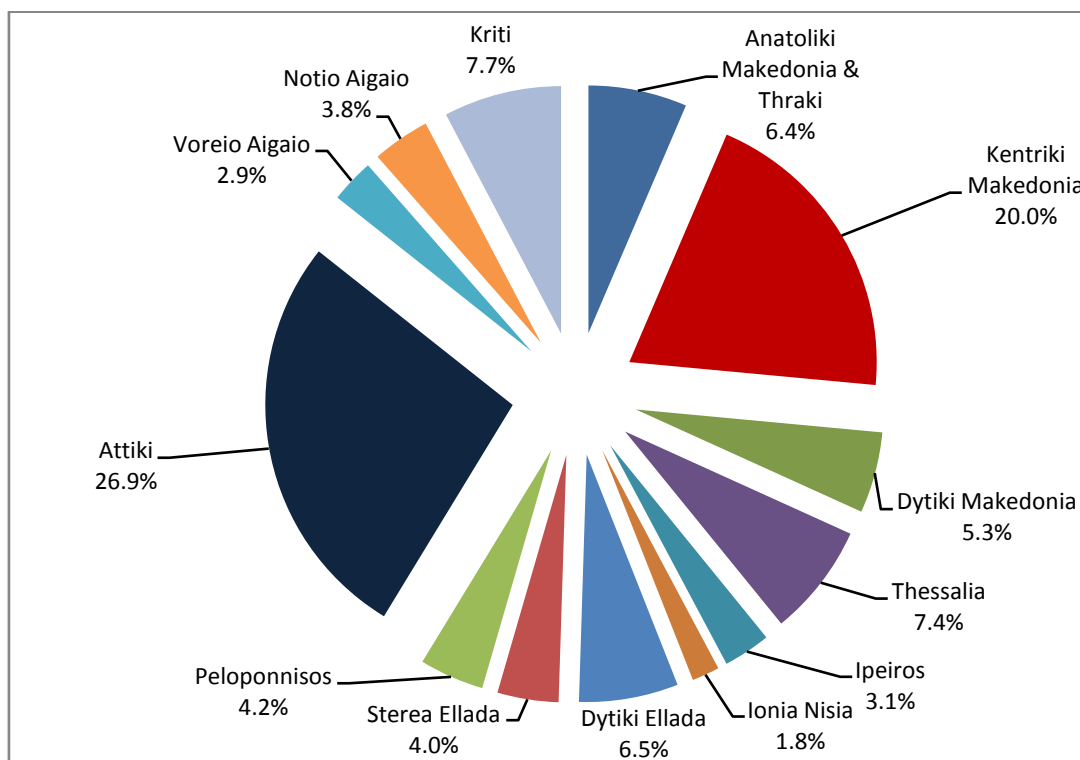


Chart 8. Graduates by NUTS 2 region, school year 2015/16

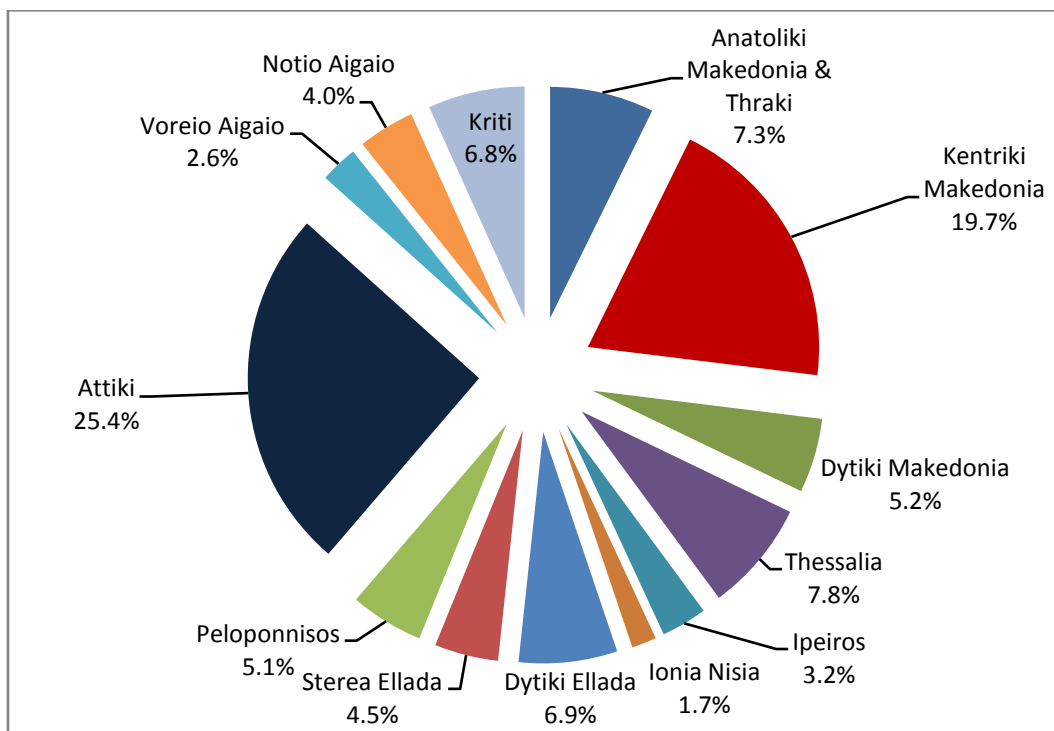
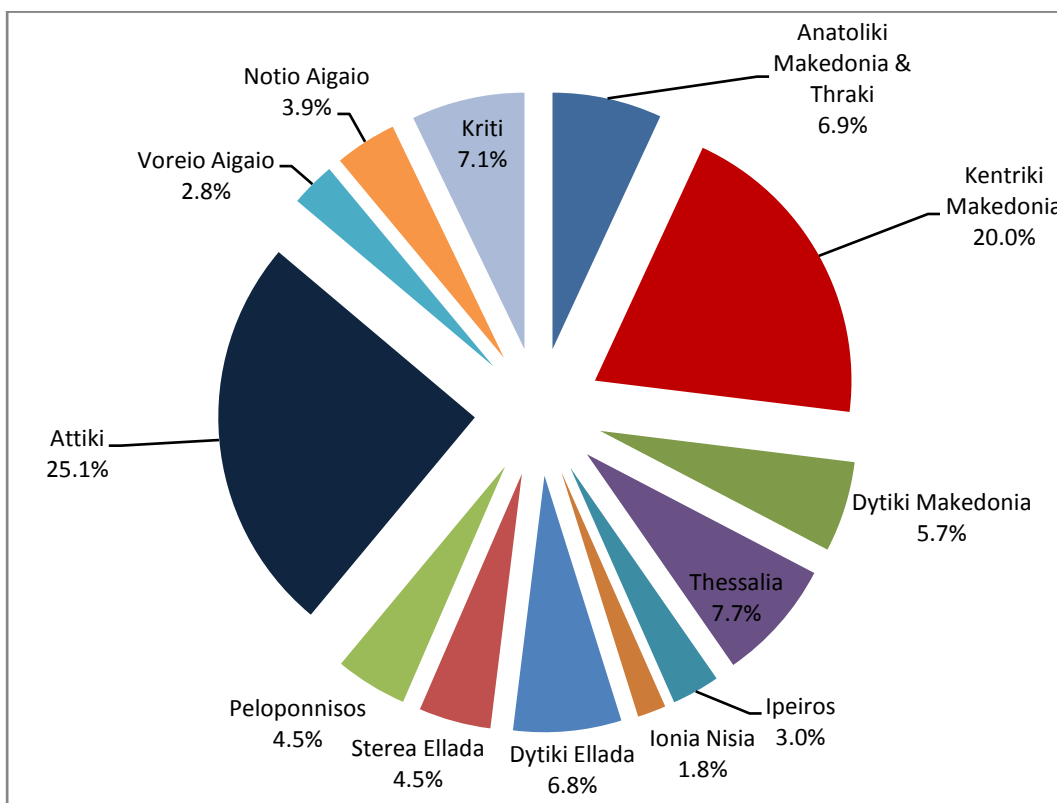


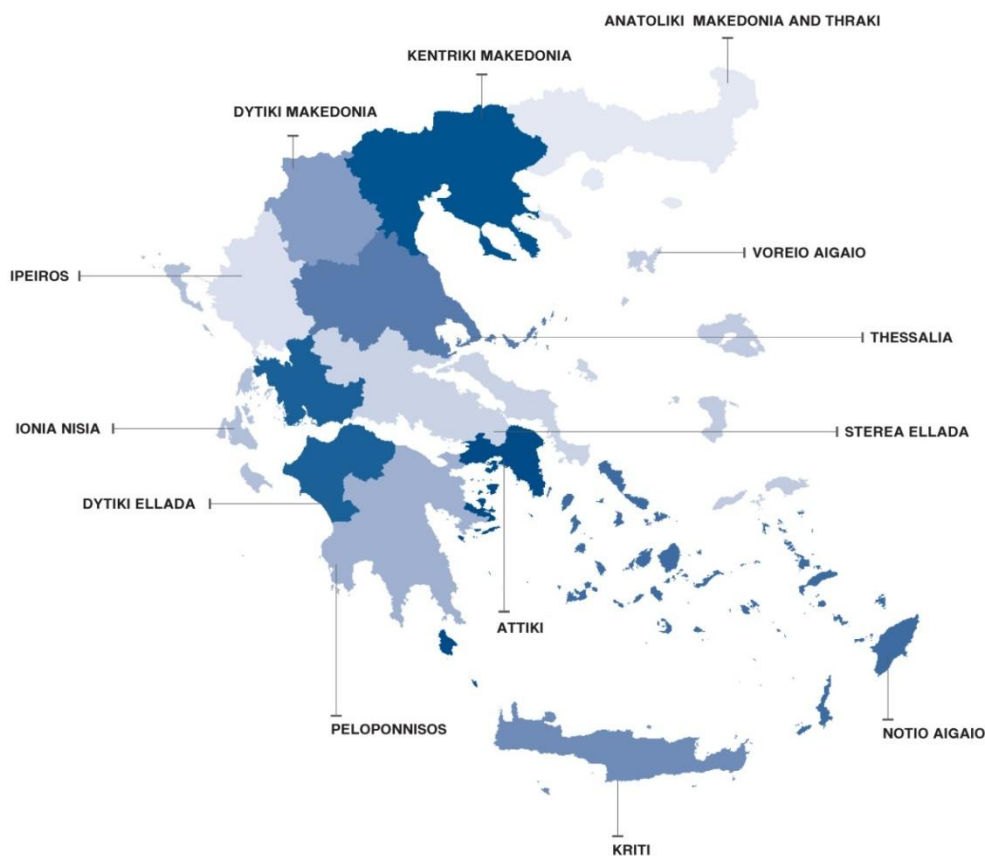
Chart 9. Graduates by NUTS 2 region, school year 2016/17



EXPLANATORY NOTES

Survey on Secondary Vocational Education	Secondary Vocational Education (formal and non formal) includes: <ul style="list-style-type: none">- the Vocational Upper Secondary Schools (EPAL)- the Vocational Schools (EPAS) and EPAL and EPAS are under the competency of the Ministry of Education, Research and Religious Affairs, the Ministry of Rural Development and Food and the Ministry of Labour, Social Security and Social Solidarity. Since the school year 2014/2015, public EPAS of the Ministry of Education, Research and Religious Affairs were abolished, while private EPAS under the supervision of the Ministry of Education, Research and Religious Affairs are still under operation. The survey is conducted on a yearly basis, by all Member States of the European Union, aiming at collecting data on the number of pupils enrolled, the school units and the number of the teaching staff.
Legal Frame	The surveys are conducted by virtue of Regulation 452/2008 of the European Parliament and the Council and implementing Regulation 912/2013 of the European Commission.
Statistical Units	The statistical units are the school units.
Coverage	Greece total.
Geographical Classification	The geographical classification is based on Nomenclature of Territorial Units for Statistics.

Map of the 13 Regions (NUTS 2) of Greece



- Dissemination of results** The data are posted on a yearly basis on the website of ELSTAT and are published in a relevant Press Release.
- Reference period** The data of the surveys refer to the end of school year 2016/2017.
For comparability reasons, the data of the end of the previous school year 2015/2016 are also provided.
- Methodology and coverage** Until the school year 2013/2014, the survey on Secondary Vocational Education used to be a census, yearly survey and it was conducted by ELSTAT.
From the school year 2014/2015 onwards, the data of the survey are collected as follows:
- As regards public school units of the Ministry of Education, Research and Religious Affairs (EPAL and EPAS), the data were extracted from the “live” e-platform “MySchool” of the Ministry of Education, Research and Religious Affairs.
 - As regards public school units which are not under the competency of the Ministry of Education, Research and Religious Affairs, data were collected via an annual census survey with the use of questionnaires.
 - As regards private school units, the data were collected via an annual census survey with the use of questionnaires.
- References** More information on the Survey on Secondary Vocational Education, such as tables with the survey’s results, samples of questionnaires, etc., can be found on the webpage of ELSTAT www.statistics.gr and at the link: “Statistics”/ Population and Social Conditions / Education /Secondary Vocational Education”.