



REVISED INDUSTRIAL PRODUCTION INDEX December 2025, y-o-y increase of 3.9%

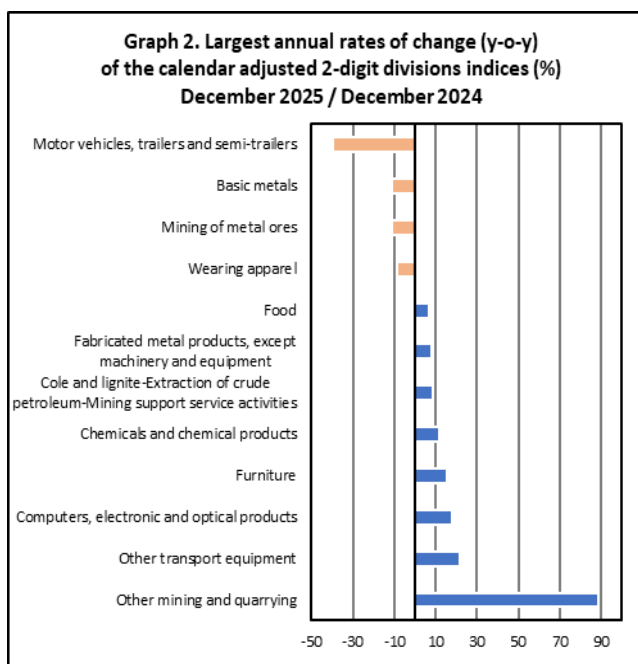
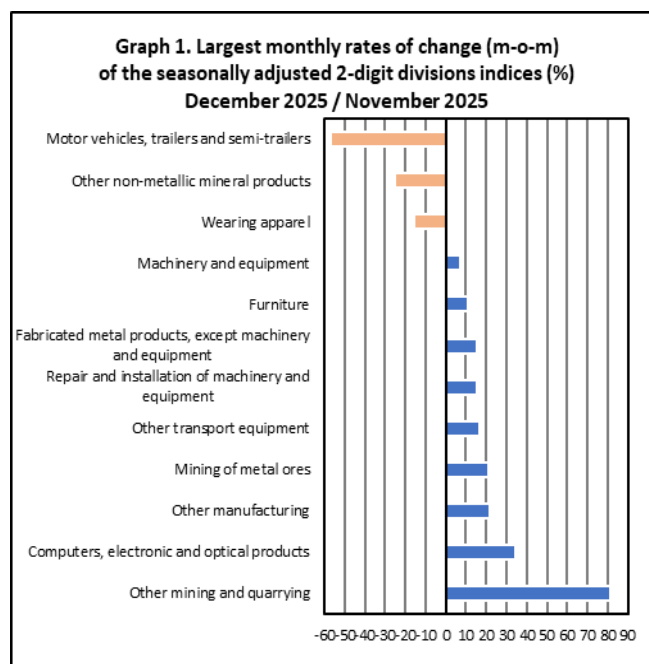
The Hellenic Statistical Authority announces the Revised Industrial Production Index (IPI) with base year 2021=100.0 for December 2025, the evolution of which, on the basis of provisional and working day adjusted data, is as follows:

The Overall Industrial Production Index in December 2025 recorded an increase of 3.9% compared with December 2024. The Overall IPI in December 2024 increased by 7.7% compared with the corresponding index in December 2023 (Table 1).

The average Overall Industrial Production Index for the period from January to December 2025 recorded an increase of 2.3% compared with the average IPI of the period from January to December 2024 (Table 2).

The seasonally adjusted Overall Industrial Production Index in December 2025 recorded an increase of 1.4% compared with the corresponding index of November 2025 (Table 4).

The index of other mining and quarrying division showed the greatest percentage increase, whereas the index of motor vehicles, trailers and semi-trailers division recorded the greatest percentage decrease in December 2025 compared with November 2025. Comparing the indices of December 2025 with the corresponding indices of December 2024, the greatest percentage increase was recorded in other mining and quarrying division, while the highest percentage decrease was recorded in motor vehicles, trailers and semi-trailers division (Tables 1 and 4).



Information on methodological issues:

Business Statistics Division
Manufacture-Construction Indices and Industrial Products Section
Head of the Section: Vlachokosta Evrydiki
Tel: +30 213 135 2056
E-mail: e.vlachokosta@statistics.gr

Information on data provision:

Tel: +30 213 135 2024, 2308, 2310
E-mail: data.dissem@statistics.gr

Evolution of the Industrial Production Index in December 2025

I. Annual changes: December 2025 / December 2024 (Table 1)

The 3.9% increase of the working day adjusted Overall IPI in December 2025, compared with the corresponding index in December 2024, is due to the annual changes of the sub-indices in the following industrial sections:

Increase of:

- 68.2% in the Mining and Quarrying Index. The increase was the result of the annual changes of the sub-indices in the following 2-digit divisions: other mining and quarrying, mining of coal and lignite - extraction of crude petroleum and natural gas - mining support service activities.
- 3.8% in the Manufacturing Index. The increase was mainly the result of the annual changes of the sub-indices in the following 2-digit divisions: other transport equipment, computers, electronic and optical products, furniture, chemicals and chemical products, fabricated metal products, except machinery and equipment.
- 1.3% in the Electricity Supply Index.

Decrease of:

- 1.5% in the Water Supply Index.

II. Rates of change of the average index of the period January - December 2025 compared with the corresponding index of the period January - December 2024 (Table 2)

The 2.3% increase of the working day adjusted average Overall IPI in the 12-month period January - December 2025, compared with the corresponding index in January - December 2024, is due to the corresponding rates of change of the sub-indices in the following industrial sections:

Increase of:

- 8.8% in the Mining and Quarrying Index.
- 3.3% in the Manufacturing Index.

Decrease of:

- 1.4% in the Water Supply Index.
- 1.9% in the Electricity Supply Index.

III. Monthly changes: December 2025 / November 2025 (Table 4)

The 1.4% increase of the seasonally adjusted Overall IPI in December 2025, compared with the corresponding index in November 2025, is due to the monthly changes of the sub-indices in the following industrial sections:

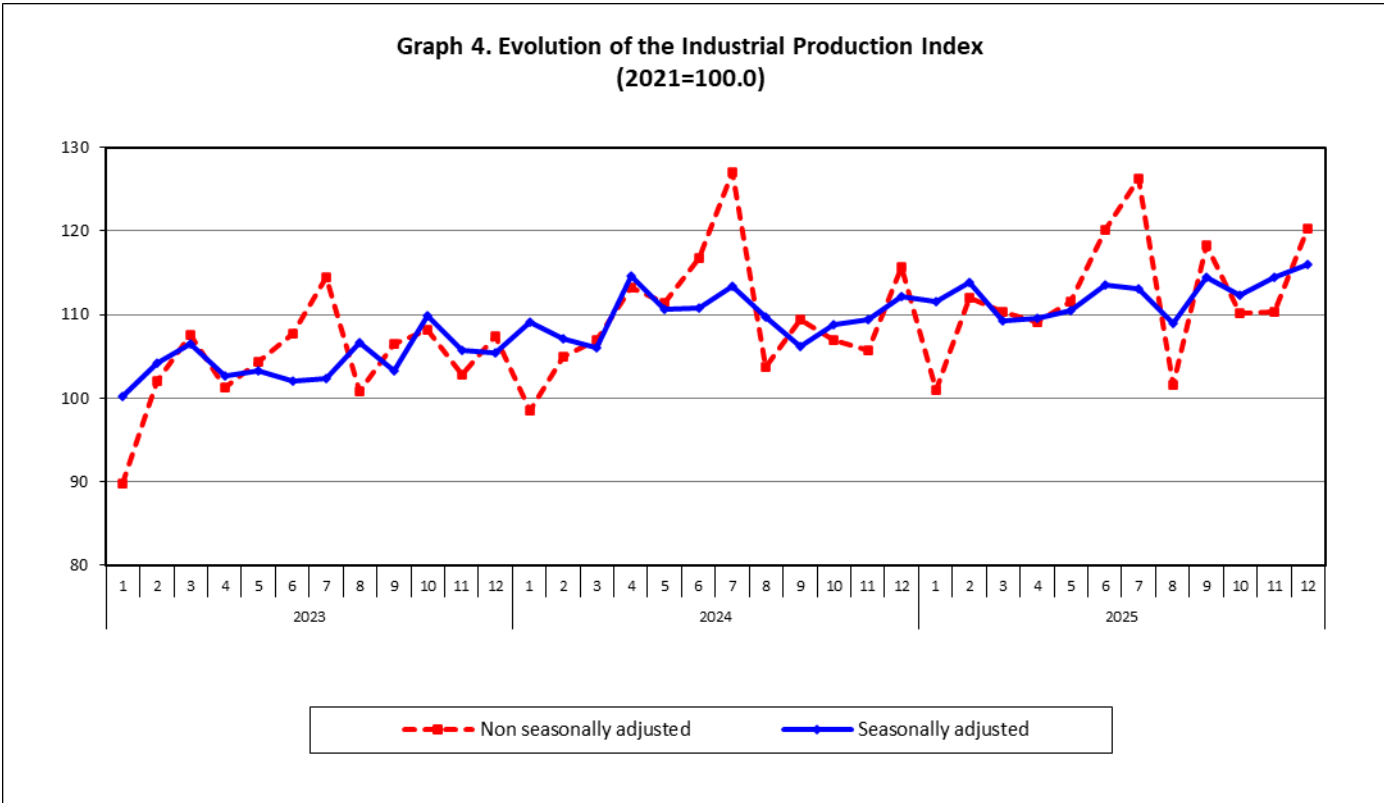
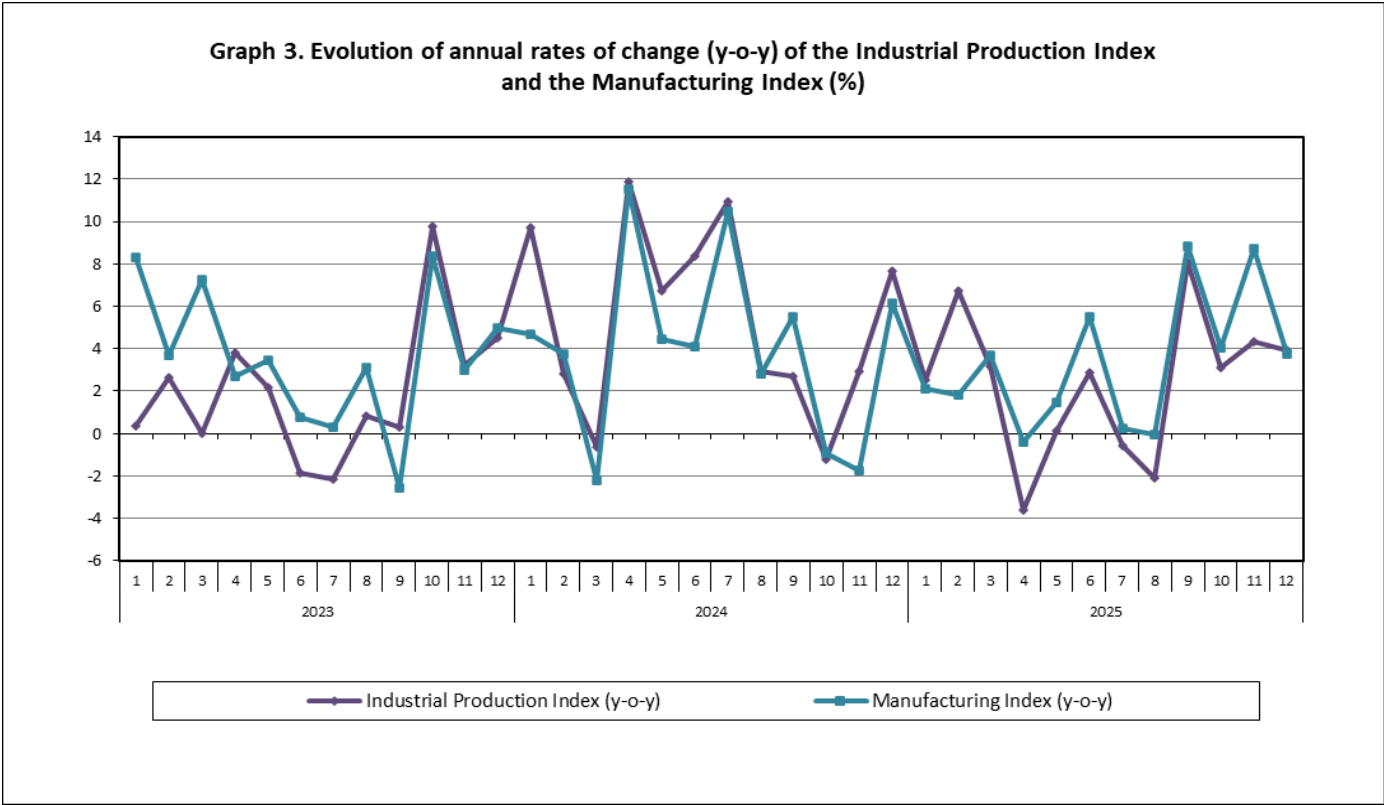
Increase of:

- 71.6% in the Mining and Quarrying Index.
- 2.5% in the Manufacturing Index.
- 1.9% in the Electricity Supply Index.

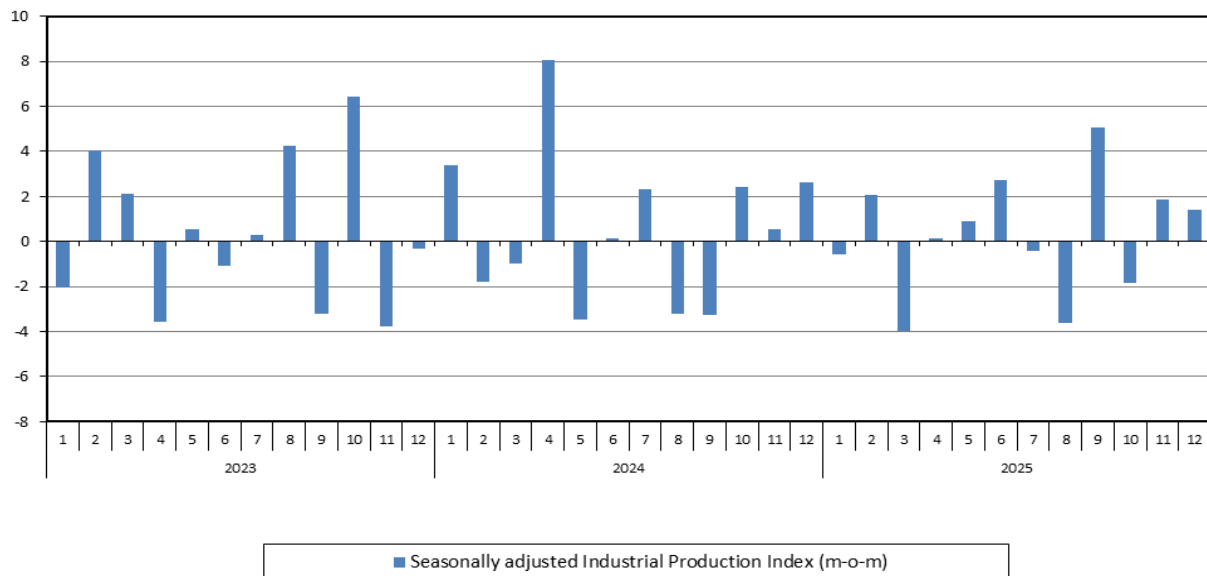
Decrease of:

- 2.0% in the Water Supply Index.

The following graphs depict the annual rates of change (y-o-y) of the Industrial Production Index and the Manufacturing Index, the evolution of the seasonally and non-seasonally adjusted Overall Industrial Production Index, as well as the monthly rates of change (m-o-m) of the seasonally adjusted index.



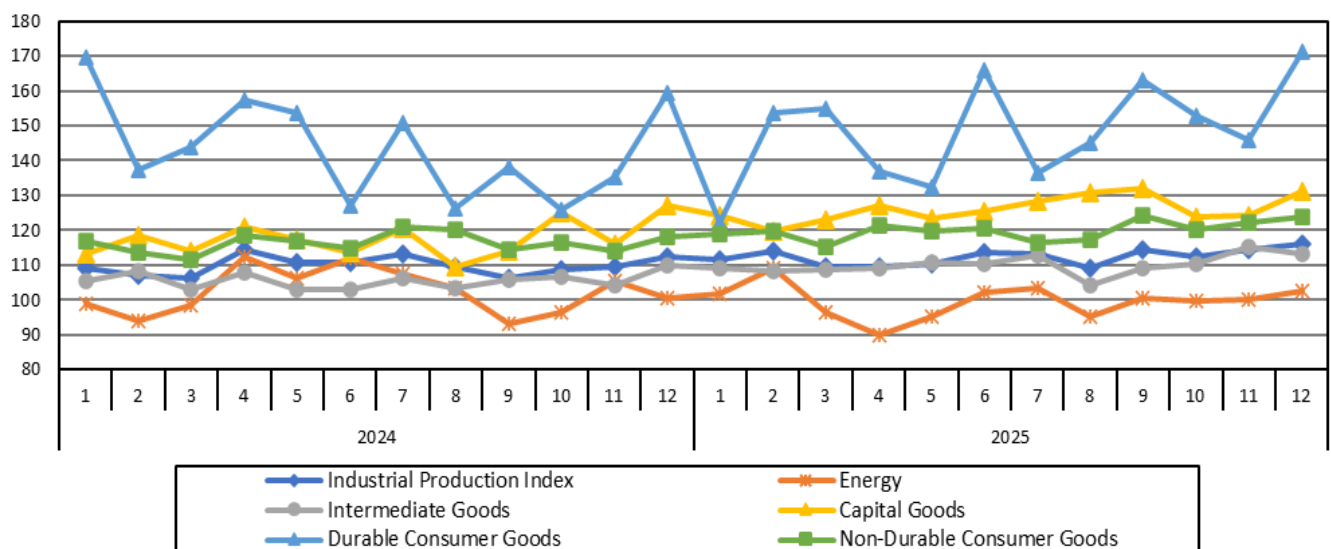
**Graph 5. Evolution of the monthly rates of change (m-o-m)
of the seasonally adjusted Industrial Production Index (%)**



It should be noted that the time series with the seasonally adjusted indices is recalculated every time a new observation is added in the time series. Therefore, the seasonally adjusted data differ from the data published in the previous Announcement.

The following graphs depict the evolution of the seasonally adjusted Industrial Production Index and the Main Industrial Groupings, as well as the evolution of the Industrial Production Index and the Industrial Sections Indices.

**Graph 6. Evolution of the seasonally adjusted Industrial Production Index
and the Main Industrial Groupings Indices, January 2024 - December 2025
(2021=100.0)**



**Graph 7. Evolution of the Industrial Production Index and the Industrial Section Indices
(2021=100.0)**

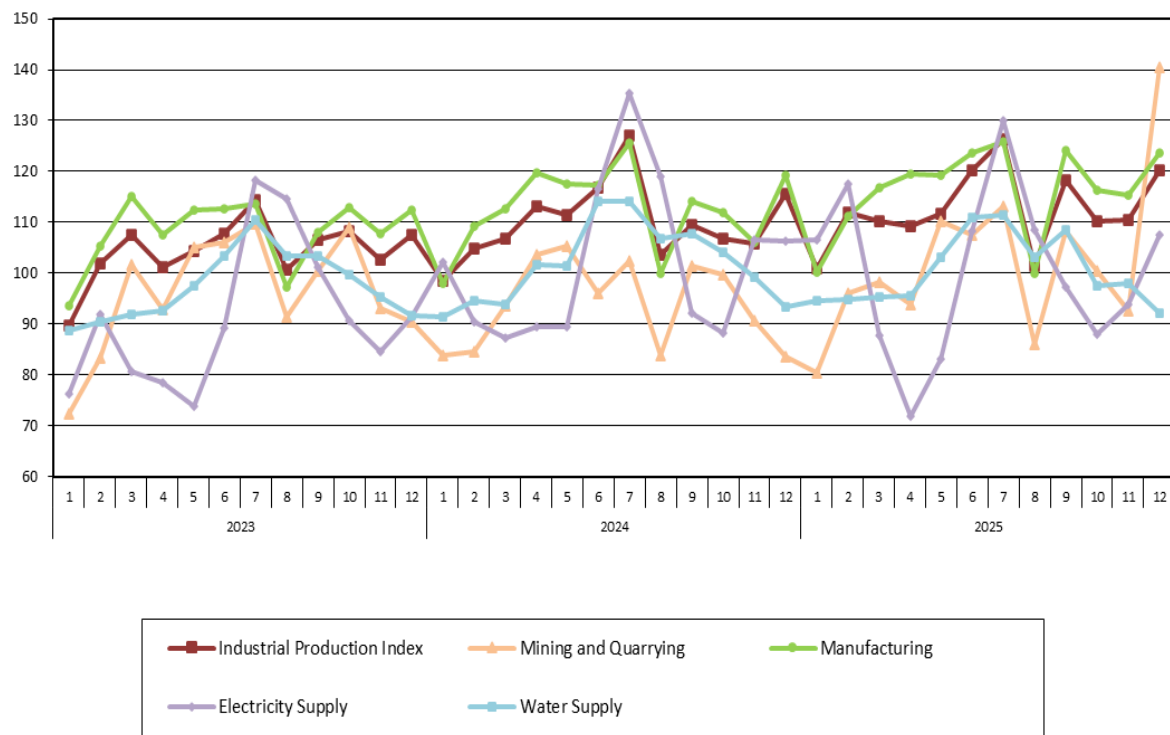


Table 1. Annual rates of change of the Industrial Production Index
(Working day adjusted data, according to the real number of working days)
Base year: 2021=100.0

Code		Division	December			Rate of change (%)	
			2025*	2024	2023	2025/2024	2024/2023
OVERALL INDEX			120.21	115.70	107.46	3.9	7.7
B	MINING AND QUARRYING		140.61	83.61	90.52	68.2	-7.6
05-06-09	Mining of coal and lignite – Extraction of crude petroleum and natural gas – Mining support service activities		200.30	184.24	119.82	8.7	53.8
07	Mining of metal ores		82.16	92.50	93.13	-11.2	-0.7
08	Other mining and quarrying		145.35	77.07	88.62	88.6	-13.0
C	MANUFACTURING		123.77	119.27	112.35	3.8	6.2
10	Food		109.78	102.72	96.91	6.9	6.0
11	Beverages		76.89	72.21	73.40	6.5	-1.6
12	Tobacco products		141.12	140.37	108.77	0.5	29.1
13	Textiles		92.47	92.79	84.70	-0.3	9.5
14	Wearing apparel		78.46	85.70	85.98	-8.4	-0.3
15	Leather and related products		89.38	85.55	138.58	4.5	-38.3
16	Wood and products of wood and cork, except furniture		90.08	95.35	151.12	-5.5	-36.9
17	Paper and paper products		100.64	100.01	93.96	0.6	6.4
18	Printing and reproduction of recorded products		132.75	128.42	135.65	3.4	-5.3
19	Coke and refined petroleum products		110.09	103.07	107.93	6.8	-4.5
20	Chemicals and chemical products		92.06	82.27	89.22	11.9	-7.8
21	Basic pharmaceutical products and pharmaceutical preparations		150.29	147.92	128.12	1.6	15.5
22	Rubber and plastic products		92.31	95.40	95.66	-3.2	-0.3
23	Other non-metallic mineral products		117.76	112.94	108.07	4.3	4.5
24	Basic metals		80.54	90.85	83.70	-11.3	8.5
25	Fabricated metal products, except machinery and equipment		140.42	129.89	124.04	8.1	4.7
26	Computers, electronic and optical products		410.02	348.35	178.68	17.7	95.0
27	Electrical equipment		140.49	134.64	140.33	4.3	-4.1
28	Machinery and equipment n. e. c.		174.49	167.45	173.24	4.2	-3.3
29	Motor vehicles, trailers and semi-trailers		188.48	311.49	244.84	-39.5	27.2
30	Other transport equipment		231.68	190.44	91.52	21.7	108.1
31	Furniture		145.49	126.06	146.23	15.4	-13.8
32	Other manufacturing		127.60	127.95	118.08	-0.3	8.4
33	Repair and installation of machinery and equipment		287.45	289.62	264.45	-0.7	9.5
D	ELECTRICITY SUPPLY		107.66	106.33	91.33	1.3	16.4
35	Electricity supply		107.66	106.33	91.33	1.3	16.4
E	WATER SUPPLY		92.04	93.48	91.63	-1.5	2.0
36	Water collection, treatment and supply		92.04	93.48	91.63	-1.5	2.0
MAIN INDUSTRIAL GROUPINGS							
1	Energy		107.17	104.84	95.78	2.2	9.5
2	Intermediate goods		103.77	100.94	97.42	2.8	3.6
3	Capital goods		212.12	204.35	192.20	3.8	6.3
4	Consumer Durables		295.07	258.00	180.59	14.4	42.9
5	Consumer Non-Durables		111.39	106.28	99.98	4.8	6.3

* Provisional data

Note: The indices are rounded up to two decimal digits when published and percentage changes up to one decimal digit when published.

Table 2. Average indices of the period January – December and rates of change of the Industrial Production Index
(Working day adjusted data, according to the real number of working days)

					Base year: 2021=100.0		
Code		Division	Average indices of the period Jan.-Dec.			Rate of change (%)	
			2025*	2024	2023	2025/2024	2024/2023
OVERALL INDEX			112.57	110.01	104.41	2.3	5.4
B	MINING AND QUARRYING		102.31	94.08	96.33	8.8	-2.3
05-06-09	Mining of coal and lignite – Extraction of crude petroleum and natural gas – Mining support service activities		91.06	107.00	142.57	-14.9	-25.0
07	Mining of metal ores		91.18	96.35	99.67	-5.4	-3.3
08	Other mining and quarrying		104.41	93.08	93.43	12.2	-0.4
C	MANUFACTURING		116.32	112.61	108.24	3.3	4.0
10	Food		119.44	115.03	109.43	3.8	5.1
11	Beverages		104.13	105.13	100.42	-0.9	4.7
12	Tobacco products		159.55	144.41	126.66	10.5	14.0
13	Textiles		103.42	97.40	96.78	6.2	0.6
14	Wearing apparel		74.42	82.92	95.03	-10.3	-12.7
15	Leather and related products		90.72	113.38	125.66	-20.0	-9.8
16	Wood and products of wood and cork, except furniture		93.70	94.30	107.88	-0.6	-12.6
17	Paper and paper products		102.61	102.11	100.77	0.5	1.3
18	Printing and reproduction of recorded products		123.71	120.01	113.82	3.1	5.4
19	Coke and refined petroleum products		100.14	103.79	102.12	-3.5	1.6
20	Chemicals and chemical products		112.04	104.76	97.57	6.9	7.4
21	Basic pharmaceutical products and pharmaceutical preparations		135.14	131.82	131.61	2.5	0.2
22	Rubber and plastic products		105.63	102.69	100.67	2.9	2.0
23	Other non-metallic mineral products		126.81	121.97	110.54	4.0	10.3
24	Basic metals		104.79	99.93	95.44	4.9	4.7
25	Fabricated metal products, except machinery and equipment		106.05	105.15	102.17	0.9	2.9
26	Computers, electronic and optical products		178.62	155.39	129.46	14.9	20.0
27	Electrical equipment		123.91	115.72	113.34	7.1	2.1
28	Machinery and equipment n. e. c.		112.34	106.72	108.66	5.3	-1.8
29	Motor vehicles, trailers and semi-trailers		132.95	126.98	145.54	4.7	-12.8
30	Other transport equipment		155.99	135.19	120.52	15.4	12.2
31	Furniture		116.07	117.17	122.37	-0.9	-4.3
32	Other manufacturing		111.95	118.53	116.26	-5.6	2.0
33	Repair and installation of machinery and equipment		147.31	133.86	122.86	10.1	9.0
D	ELECTRICITY SUPPLY		100.01	101.92	90.89	-1.9	12.1
35	Electricity supply		100.01	101.92	90.89	-1.9	12.1
E	WATER SUPPLY		100.41	101.88	97.40	-1.4	4.6
36	Water collection, treatment and supply		100.41	101.88	97.40	-1.4	4.6
MAIN INDUSTRIAL GROUPINGS							
1	Energy		100.03	102.43	94.37	-2.3	8.5
2	Intermediate goods		110.10	105.39	100.47	4.5	4.9
3	Capital goods		126.65	118.64	116.19	6.8	2.1
4	Consumer Durables		155.53	147.17	135.52	5.7	8.6
5	Consumer Non-Durables		119.78	116.28	111.87	3.0	3.9

* Provisional data

Note: The indices are rounded up to two decimal digits when published and percentage changes up to one decimal digit when published.

Table 3. Monthly rate of change of the Industrial Production Index*(Working day adjusted data, according to the real number of working days)***Base year: 2021=100.0**

Code	Division	December 2025*	November 2025*	Rate of change (%) Dec.2025/Nov.2025
OVERALL INDEX		120.21	110.35	8.9
B	MINING AND QUARRYING	140.61	92.77	51.6
05-06-09	Mining of coal and lignite – Extraction of crude petroleum and natural gas – Mining support service activities	200.30	73.28	173.3
07	Mining of metal ores	82.16	80.61	1.9
08	Other mining and quarrying	145.35	95.44	52.3
C	MANUFACTURING	123.77	115.27	7.4
10	Food	109.78	108.37	1.3
11	Beverages	76.89	76.32	0.8
12	Tobacco products	141.12	161.21	-12.5
13	Textiles	92.47	105.54	-12.4
14	Wearing apparel	78.46	98.20	-20.1
15	Leather and related products	89.38	81.14	10.2
16	Wood and products of wood and cork, except furniture	90.08	77.59	16.1
17	Paper and paper products	100.64	100.21	0.4
18	Printing and reproduction of recorded products	132.75	129.00	2.9
19	Coke and refined petroleum products	110.09	108.61	1.4
20	Chemicals and chemical products	92.06	108.83	-15.4
21	Basic pharmaceutical products and pharmaceutical preparations	150.29	135.42	11.0
22	Rubber and plastic products	92.31	104.23	-11.4
23	Other non-metallic mineral products	117.76	178.07	-33.9
24	Basic metals	80.54	101.60	-20.7
25	Fabricated metal products, except machinery and equipment	140.42	108.71	29.2
26	Computers, electronic and optical products	410.02	180.56	127.1
27	Electrical equipment	140.49	137.68	2.0
28	Machinery and equipment n. e. c.	174.49	109.73	59.0
29	Motor vehicles, trailers and semi-trailers	188.48	297.56	-36.7
30	Other transport equipment	231.68	152.23	52.2
31	Furniture	145.49	104.51	39.2
32	Other manufacturing	127.60	88.81	43.7
33	Repair and installation of machinery and equipment	287.45	111.94	156.8
D	ELECTRICITY SUPPLY	107.66	93.79	14.8
35	Electricity supply	107.66	93.79	14.8
E	WATER SUPPLY	92.04	97.99	-6.1
36	Water collection, treatment and supply	92.04	97.99	-6.1
MAIN INDUSTRIAL GROUPINGS				
1	Energy	107.17	97.93	9.4
2	Intermediate goods	103.77	116.15	-10.7
3	Capital goods	212.12	123.95	71.1
4	Consumer Durables	295.07	138.51	113.0
5	Consumer Non-Durables	111.39	111.57	-0.2

* Provisional data

Note: The indices are rounded up to two decimal digits when published and percentage changes up to one decimal digit when published.

Table 4. Monthly rate of change of the seasonally adjusted Industrial Production Index

Base year: 2021=100.0

Code	Division	December 2025*	November 2025*	Rate of change (%) Dec. 2025/Nov. 2025
	OVERALL INDEX	116.00	114.38	1.4
B	MINING AND QUARRYING	162.75	94.84	71.6
05-06-09	Mining of coal and lignite – Extraction of crude petroleum and natural gas – Mining support service activities	-	-	-
07	Mining of metal ores	92.69	76.39	21.3
08	Other mining and quarrying	177.93	98.08	81.4
C	MANUFACTURING	121.83	118.90	2.5
10	Food	123.84	121.36	2.0
11	Beverages	107.32	106.67	0.6
12	Tobacco products	157.70	165.36	-4.6
13	Textiles	104.27	105.45	-1.1
14	Wearing apparel	75.94	90.02	-15.6
15	Leather and related products	89.53	90.39	-0.9
16	Wood and products of wood and cork, except furniture	79.63	82.40	-3.4
17	Paper and paper products	105.67	103.83	1.8
18	Printing and reproduction of recorded products	121.37	122.45	-0.9
19	Coke and refined petroleum products	105.57	107.51	-1.8
20	Chemicals and chemical products	111.97	118.05	-5.1
21	Basic pharmaceutical products and pharmaceutical preparations	140.80	135.89	3.6
22	Rubber and plastic products	103.51	106.55	-2.8
23	Other non-metallic mineral products	129.19	172.60	-25.1
24	Basic metals	93.08	99.00	-6.0
25	Fabricated metal products, except machinery and equipment	121.40	105.10	15.5
26	Computers, electronic and optical products	229.17	170.47	34.4
27	Electrical equipment	123.99	130.48	-5.0
28	Machinery and equipment n. e. c.	117.75	110.15	6.9
29	Motor vehicles, trailers and semi-trailers	102.41	237.01	-56.8
30	Other transport equipment	249.14	213.05	16.9
31	Furniture	122.79	110.57	11.1
32	Other manufacturing	118.00	97.14	21.5
33	Repair and installation of machinery and equipment	146.36	126.69	15.5
D	ELECTRICITY SUPPLY	102.00	100.05	1.9
35	Electricity supply	102.00	100.05	1.9
E	WATER SUPPLY	99.95	102.00	-2.0
36	Water collection, treatment and supply	99.95	102.00	-2.0
	MAIN INDUSTRIAL GROUPINGS			
1	Energy	102.58	100.19	2.4
2	Intermediate goods	113.02	115.06	-1.8
3	Capital goods	130.97	124.19	5.5
4	Consumer Durables	171.42	146.07	17.4
5	Consumer Non-Durables	123.66	122.30	1.1

Notes:

1. The indices are rounded up to two decimal digits when published and percentage changes up to one decimal digit when published.
2. The whole time-series with seasonally adjusted indices is recalculated every time a new observation is added in the time-series.
3. The composed index of divisions 05-06-09 is not seasonally adjusted.

Table 5. Evolution of the Overall Industrial Production Index
(Working day adjusted data, according to the real number of working days)

Base year: 2021=100.0

Year and month	Overall Index	Monthly rate of change (%)	Annual rate of change (%)	12-month average index (moving average)	Rate of change of the 12-month average index (%)
2023:					
1	89.79	-12.7	0.3	102.52	2.6
2	102.02	13.6	2.7	102.74	2.2
3	107.62	5.5	0.0	102.74	1.5
4	101.20	-6.0	3.8	103.05	2.1
5	104.38	3.1	2.2	103.23	1.9
6	107.72	3.2	-1.8	103.06	1.1
7	114.48	6.3	-2.1	102.86	0.3
8	100.77	-12.0	0.8	102.93	0.0
9	106.51	5.7	0.3	102.95	0.0
10	108.19	1.6	9.8	103.75	1.1
11	102.77	-5.0	3.3	104.02	1.4
12	107.46	4.6	4.5	104.41	1.9
Annual average	104.41				
2024:					
1	98.53	-8.3	9.7	105.14	2.6
2	104.89	6.4	2.8	105.38	2.6
3	106.92	1.9	-0.7	105.32	2.5
4	113.22	5.9	11.9	106.32	3.2
5	111.42	-1.6	6.7	106.91	3.6
6	116.74	4.8	8.4	107.66	4.5
7	127.03	8.8	11.0	108.70	5.7
8	103.70	-18.4	2.9	108.95	5.9
9	109.39	5.5	2.7	109.19	6.1
10	106.86	-2.3	-1.2	109.08	5.1
11	105.77	-1.0	2.9	109.33	5.1
12	115.70	9.4	7.7	110.01	5.4
Annual average	110.01				
2025*:					
1	101.02	-12.7	2.5	110.22	4.8
2	111.94	10.8	6.7	110.81	5.2
3	110.29	-1.5	3.2	111.09	5.5
4	109.13	-1.0	-3.6	110.75	4.2
5	111.58	2.2	0.1	110.76	3.6
6	120.11	7.6	2.9	111.04	3.1
7	126.33	5.2	-0.6	110.99	2.1
8	101.53	-19.6	-2.1	110.80	1.7
9	118.22	16.4	8.1	111.54	2.2
10	110.16	-6.8	3.1	111.82	2.5
11	110.35	0.2	4.3	112.20	2.6
12	120.21	8.9	3.9	112.57	2.3
Annual average	112.57				

* Provisional data

Note: The indices are rounded up to two decimal digits when published and percentage changes up to one decimal digit when published.

Table 6. Monthly evolution of the seasonally adjusted Overall Industrial Production Index and Main Industrial Groupings

Base year: 2021=100.0

Year and month		Overall Index		Energy		Intermediate goods		Capital goods		Consumer durables		Consumer non-durables	
		Index	Monthly rate of change (%)	Index	Monthly rate of change (%)	Index	Monthly rate of change (%)	Index	Monthly rate of change (%)	Index	Monthly rate of change (%)	Index	Monthly rate of change (%)
2023:	1	100.16	-2.0	80.98	-10.5	101.15	-2.2	116.77	10.1	125.33	-6.6	110.93	1.7
	2	104.22	4.1	95.80	18.3	99.32	-1.8	113.41	-2.9	128.48	2.5	112.33	1.3
	3	106.43	2.1	95.36	-0.5	103.30	4.0	116.38	2.6	124.67	-3.0	115.58	2.9
	4	102.62	-3.6	99.07	3.9	99.43	-3.7	103.29	-11.3	128.29	2.9	106.98	-7.4
	5	103.20	0.6	89.94	-9.2	99.68	0.3	118.93	15.1	130.55	1.8	112.60	5.3
	6	102.06	-1.1	86.25	-4.1	99.95	0.3	115.49	-2.9	131.64	0.8	113.05	0.4
	7	102.33	0.3	97.00	12.5	95.55	-4.4	109.02	-5.6	135.44	2.9	109.42	-3.2
	8	106.67	4.2	99.79	2.9	100.78	5.5	117.35	7.6	131.64	-2.8	113.80	4.0
	9	103.26	-3.2	100.19	0.4	95.80	-4.9	111.12	-5.3	141.70	7.6	108.25	-4.9
	10	109.89	6.4	101.55	1.4	104.34	8.9	116.70	5.0	149.72	5.7	118.21	9.2
	11	105.74	-3.8	93.20	-8.2	101.87	-2.4	125.49	7.5	159.69	6.7	112.20	-5.1
	12	105.43	-0.3	91.79	-1.5	106.37	4.4	122.72	-2.2	125.06	-21.7	111.33	-0.8
Annual average		104.33		94.24		100.63		115.55		134.35		112.06	
2024:	1	109.01	3.4	98.76	7.6	105.32	-1.0	113.00	-7.9	169.46	35.5	117.04	5.1
	2	107.08	-1.8	93.83	-5.0	108.12	2.7	118.57	4.9	137.12	-19.1	113.47	-3.1
	3	106.03	-1.0	98.39	4.9	102.86	-4.9	114.11	-3.8	143.79	4.9	111.45	-1.8
	4	114.59	8.1	112.43	14.3	107.70	4.7	120.87	5.9	157.18	9.3	118.45	6.3
	5	110.60	-3.5	106.29	-5.5	103.00	-4.4	117.24	-3.0	153.60	-2.3	116.91	-1.3
	6	110.76	0.1	111.81	5.2	102.82	-0.2	113.71	-3.0	127.16	-17.2	114.99	-1.6
	7	113.33	2.3	107.50	-3.9	106.10	3.2	120.63	6.1	150.97	18.7	120.84	5.1
	8	109.68	-3.2	103.17	-4.0	103.49	-2.5	109.51	-9.2	126.24	-16.4	120.11	-0.6
	9	106.13	-3.2	93.12	-9.7	105.66	2.1	113.85	4.0	138.05	9.4	114.52	-4.7
	10	108.70	2.4	96.37	3.5	106.61	0.9	125.00	9.8	125.98	-8.7	116.45	1.7
	11	109.32	0.6	105.56	9.5	104.22	-2.2	116.18	-7.1	135.28	7.4	113.87	-2.2
	12	112.20	2.6	100.45	-4.8	110.00	5.5	127.10	9.4	159.31	17.8	118.16	3.8
Annual average		109.79		102.31		105.49		117.48		143.68		116.35	
2025:	1	111.55	-0.6	101.56	1.1	109.03	-0.9	124.36	-2.2	122.27	-23.2	118.83	0.6
	2	113.84	2.1	108.91	7.2	108.07	-0.9	119.56	-3.9	153.61	25.6	119.55	0.6
	3	109.31	-4.0	96.37	-11.5	108.70	0.6	123.04	2.9	154.74	0.7	115.37	-3.5
	4	109.47	0.1	89.97	-6.6	109.06	0.3	126.90	3.1	136.78	-11.6	121.40	5.2
	5	110.45	0.9	94.96	5.5	110.66	1.5	123.39	-2.8	132.57	-3.1	119.69	-1.4
	6	113.45	2.7	101.98	7.4	110.41	-0.2	125.50	1.7	165.76	25.0	120.35	0.6
	7	112.99	-0.4	103.29	1.3	112.83	2.2	128.20	2.2	136.57	-17.6	116.59	-3.1
	8	108.88	-3.6	95.24	-7.8	104.28	-7.6	130.73	2.0	145.13	6.3	117.43	0.7
	9	114.39	5.1	100.54	5.6	109.21	4.7	131.82	0.8	163.16	12.4	124.09	5.7
	10	112.31	-1.8	99.80	-0.7	110.25	0.9	123.99	-5.9	152.78	-6.4	120.08	-3.2
	11	114.38	1.8	100.19	0.4	115.06	4.4	124.19	0.2	146.07	-4.4	122.30	1.8
	12	116.00	1.4	102.58	2.4	113.02	-1.8	130.97	5.5	171.42	17.4	123.66	1.1
Annual average		112.25		99.62		110.05		126.05		148.40		119.95	

Notes:

1. The indices are rounded up to two decimal digits when published and percentage changes up to one decimal digit when published.
2. The whole time-series with seasonally adjusted indices is recalculated every time a new observation is added in the time-series.

METHODOLOGICAL NOTES

Generally	The Industrial Production Index (IPI) in Greece has been compiled by the Hellenic Statistical Authority (ELSTAT) from 1959 onwards.
Purpose of the index	The objective of the index is to compare the magnitude (volume) of the output in the current month in the mining and quarrying, manufacturing, electricity and water supply divisions with the corresponding output of a given fixed period, which is considered as base period. The Industrial Production Index shows the evolution of the value added of the production factors cost, at constant prices.
Legal framework	The compilation of the IPI, is governed by Council Regulation (EU) No 2019/2152 of the European Parliament and of the Council on European business statistics (EBS-Regulation), as well as the Commission Implementing Regulation (EU) No 2020/1197 laying down technical specifications and arrangements pursuant to Regulation (EU) No 2019/2152. Furthermore, the IPI is governed by Regulation (EC) No 1893/2006 of the European Parliament and of the Council.
Reference period	Month.
Base year	2021=100.0.
Revision	Pursuant to the provisions of Council Regulation No 2019/2152 concerning the Industrial Production Index, it is updated, every five (5) years, in years ending in 0 or 5, while, in the current revision 2021=100.0 due to the impact of the pandemic, it is revised with base year the year 2021.
Statistical classifications	At the level of branches of economic activities, the statistical classification of economic activities NACE Rev.2 of EU was used (Regulation No 1893/2006), while at the level of main industrial groupings, the allocation of two-digit and three-digit NACE Rev. 2 headings to categories of aggregate classification was used, in accordance with Council Regulation No 656/2007. At product level, the statistical classification CPA 2008 of EU was used, according to Council Regulation No 451/2008.
Geographical coverage	The index covers the whole Country.
Coverage of economic activities	The index covers all the sections of industry, the main industrial groups, as well as all levels of economic activity.
Statistical survey	The data are collected from a sample of 1,152 enterprises. The survey covers 313 products and the measurement of the surveyed products is made in terms of output quantities or in terms of production value or turnover, according to the specific features in each branch of economic activity.
Seasonal adjustment	Seasonal adjustment is the procedure followed to remove the impact of seasonality on the time-series (i.e. the impact of monthly effects, e.g. holidays, tourist period etc.), in order to improve comparability over time. The method applied is TRAMO-SEATS with the use of JDemetra+ 2.0.0. For the seasonal adjustment of the Industrial Production Index at 2-digit level of NACE Rev.2, at section level (B – Mining and Quarrying, C – Manufacturing, D – Electricity and E – Water Supply) and for the Main Industrial Groupings (MIGs), the direct approach is applied, namely each time-series is seasonally adjusted independently. For the overall Industrial Production Index, the indirect approach is applied, with the seasonally adjusted IPI being computed by aggregating the seasonally adjusted MIGs using appropriate weights.
Publication of data	The revised IPI with the new base year 2021 (2021=100.0) is released since February 2026, with December 2025 as the first reference month. Data with base year 2021=100.0 are available from January 2000 onwards.
References	More information about the methodology concerning the compilation and calculation of the index and the time series shall be available on the website of the Hellenic Statistical Authority (ELSTAT) (http://www.statistics.gr/en/statistics/-/publication/DKT21/-).