



LABOUR FORCE SURVEY: November 2025

The Hellenic Statistical Authority (ELSTAT) announces the seasonally adjusted estimates of employment and unemployment for November 2025.

- The **seasonally adjusted unemployment rate** in November 2025 amounted to **8.2%** compared to the upwards revised 9.7% in November 2024, and 8.6% in October 2025.
- The **number of employed persons** amounted to 4,406,148 persons, increased by 121,939 persons as compared with November 2024 (2.8%), and increased by 38,600 persons compared with October 2025 (0.9%).
- The **number of unemployed persons** amounted to 395,436 persons, decreased by 62,458 persons as compared with November 2024 (-13.6%), and decreased by 13,900 persons compared with October 2025 (-3.4%).
- The **number of persons outside the labour force**, i.e., persons under the age of 75, that neither work nor look for a job, amounted to 2,937,797, decreased by 86,848 persons as compared with November 2024 (-2.9%), and decreased by 26,982 persons compared with October 2025 (-0.9%).

Graph 1 shows the evolution of the above figures as of November 2011.

Based on the methodology of the Labour Force Survey and to maintain the quality and representativeness of the survey results in line with the sample design, the monthly data are updated by incorporating new survey units as soon as the corresponding data for the whole quarter are finalized in order to ensure 100% coverage of the sample. The sample of households and individuals of the Labour Force Survey is to be recalibrated in line with the final detailed data of the 2021 Population Census.

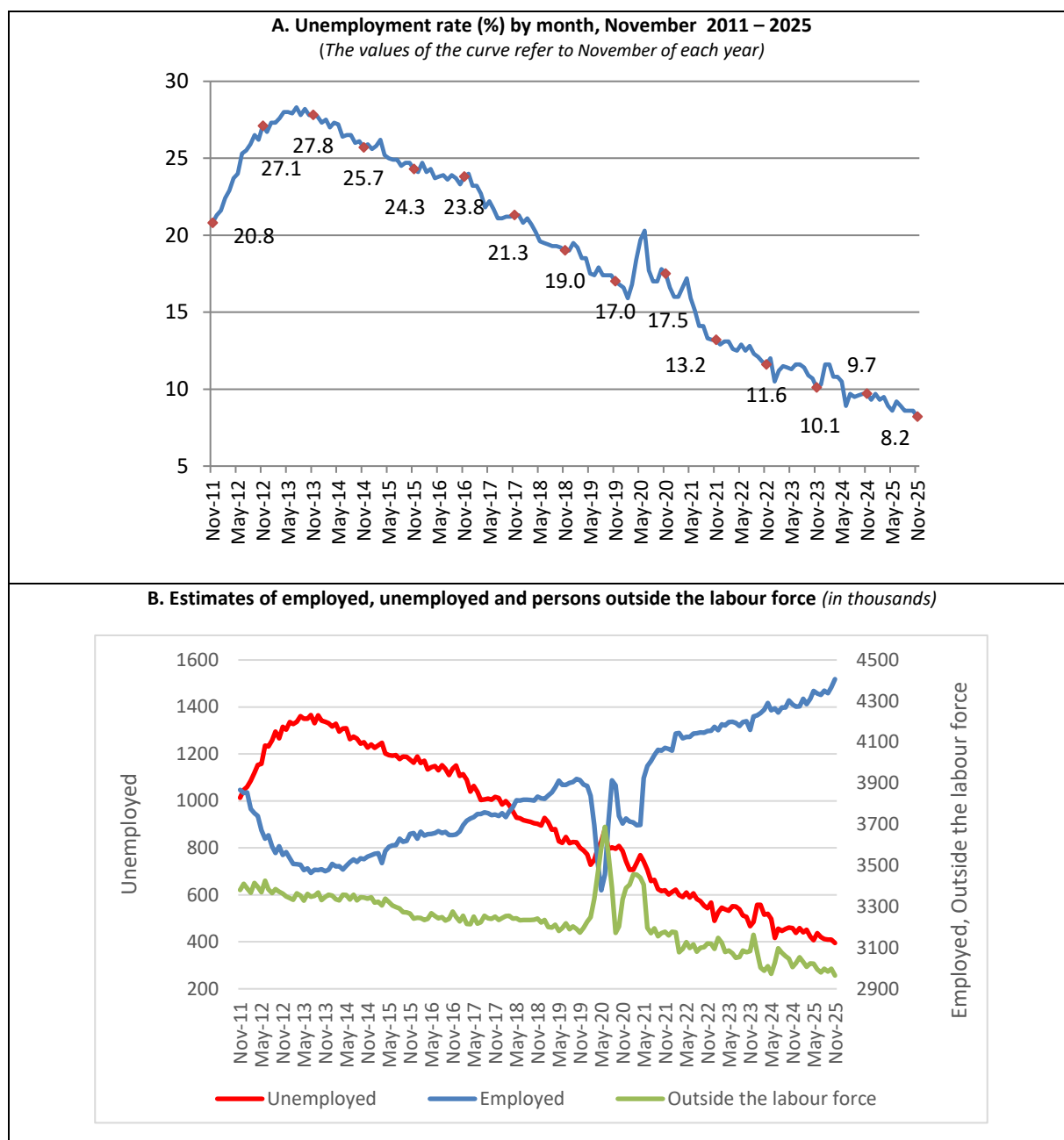
Information on methodological issues

Population, Employment and Cost of Living Statistics Division
Section of Labour Statistics
Konstantinos Loizos
Tel: +30 213 135 2173
E-mail : k.loizos@statistics.gr

Information for data provision:

Tel. 0030 213 135 2022
e-mail: data.dissem@statistics.gr

Graph 1: Evolution of employment and unemployment



The figures and the changes of the estimates as regards the persons employed, the unemployed and the persons outside the labour force, as well as the unemployment rate for November of the years 2020-2025 are presented in Table 1.

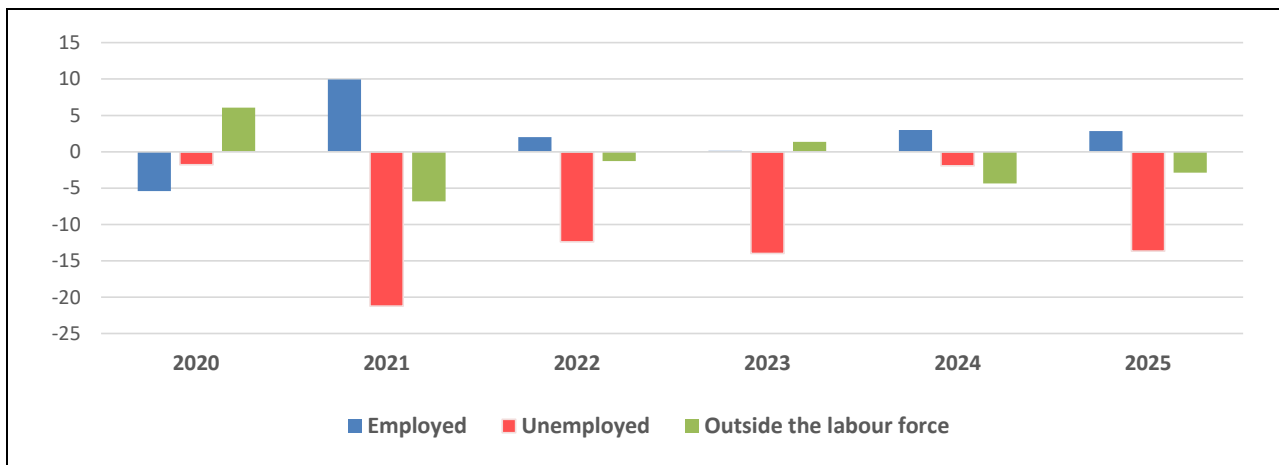
The complete data series for employed, unemployed and persons outside the labour force as well as the unemployment rate are published on ELSTAT's webpage.

Table 1: Employed, unemployed, persons outside the labour force and unemployment rate (%), November 2020 – 2025

	November					
	2020	2021	2022	2023	2024	2025
Employed	3,704,323	4,072,233	4,154,944	4,160,292	4,284,209	4,406,148
Unemployed	786,569	619,647	542,802	466,965	457,894	395,436
Persons outside the labour force	3,390,837	3,160,036	3,119,457	3,162,349	3,024,645	2,937,797
Unemployment Rate	17.5	13.2	11.6	10.1	9.7	8.2

Graph 2 depicts the percentage changes in relation to the corresponding month of the previous year.

Graph 2: Annual changes of persons employed, unemployed and persons outside the labour force (percentage change in relation to the corresponding month of the previous year)



Tables 2 and 3 illustrate the unemployment rate by gender and age group, from November 2020 to 2025.

Table 2: Unemployment rate (%) by gender, November 2020-2025

Gender	November					
	2020	2021	2022	2023	2024	2025
Males	14.5	9.7	8.7	8.6	7.5	6.3
Females	21.5	17.6	15.2	12.0	12.3	10.6
Total	17.5	13.2	11.6	10.1	9.7	8.2

Table 3: Unemployment rate (%) by aggregated age group, November 2020-2025

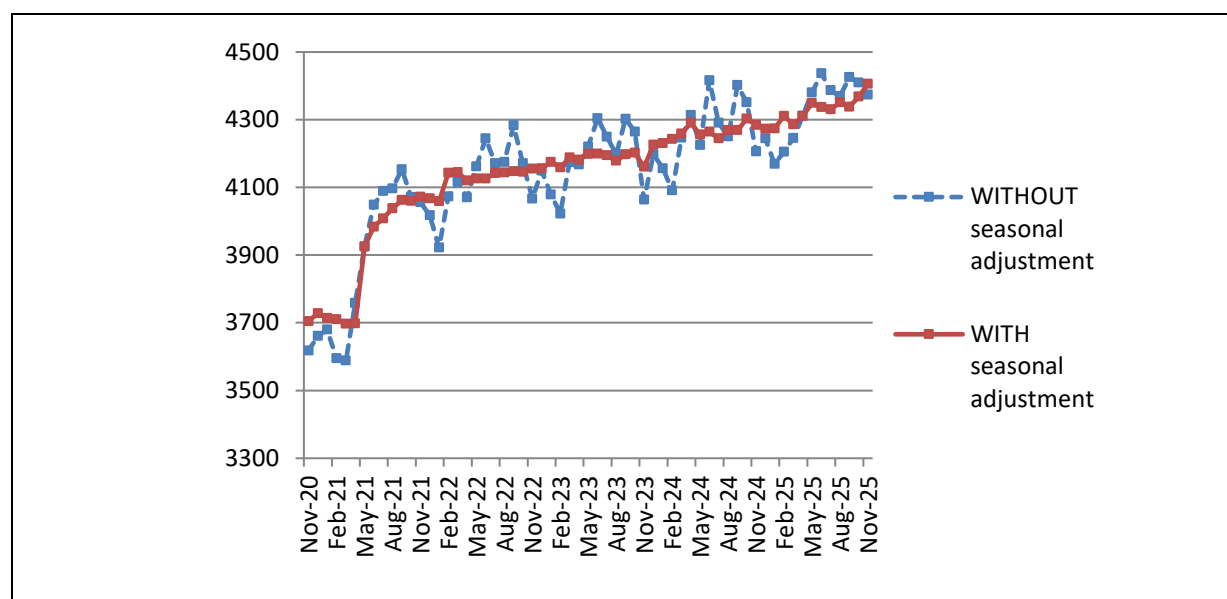
Age Group	November					
	2020	2021	2022	2023	2024	2025
15-24	39.6	31.0	30.9	30.9	21.2	16.6
25-74	16.5	12.3	10.4	8.9	9.0	7.7
Total	17.5	13.2	11.6	10.1	9.7	8.2

The effect of seasonal adjustment on the estimates of Labour Force Survey

The characteristics surveyed by the Labour Force Survey (number of employed, unemployed, etc.) have large seasonal variation. For example, in Greece, employment normally increases during the summer months because of tourism (if there are no other countervailing factors).

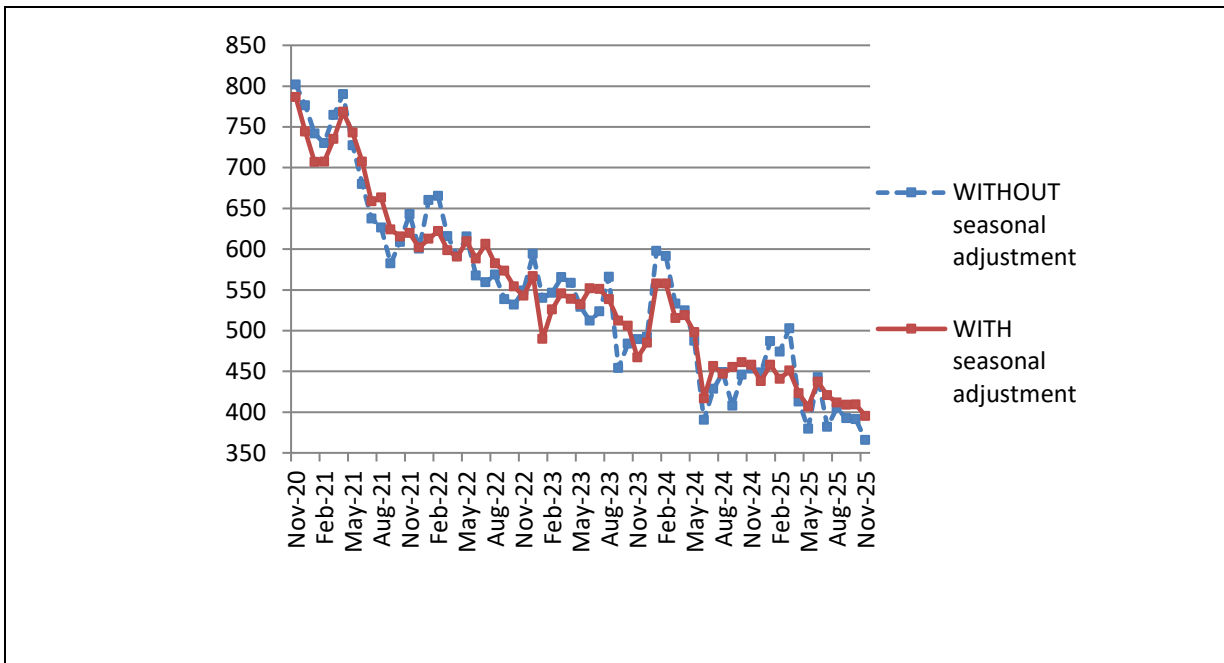
Seasonal adjustment is a statistical technique that removes the seasonal component of a time series, making more visible the underlying trend in the change of a characteristic. Whenever new data are added, the monthly estimates are subject to revisions due to the update of the seasonally adjusted time series.

Graphs 3, 4 and 5 present the adjusted and unadjusted time series for employed and unemployed persons, and the unemployment rate as of 2020.

Graph 3: Number of Employed Persons - Adjusted and Non-adjusted Estimates

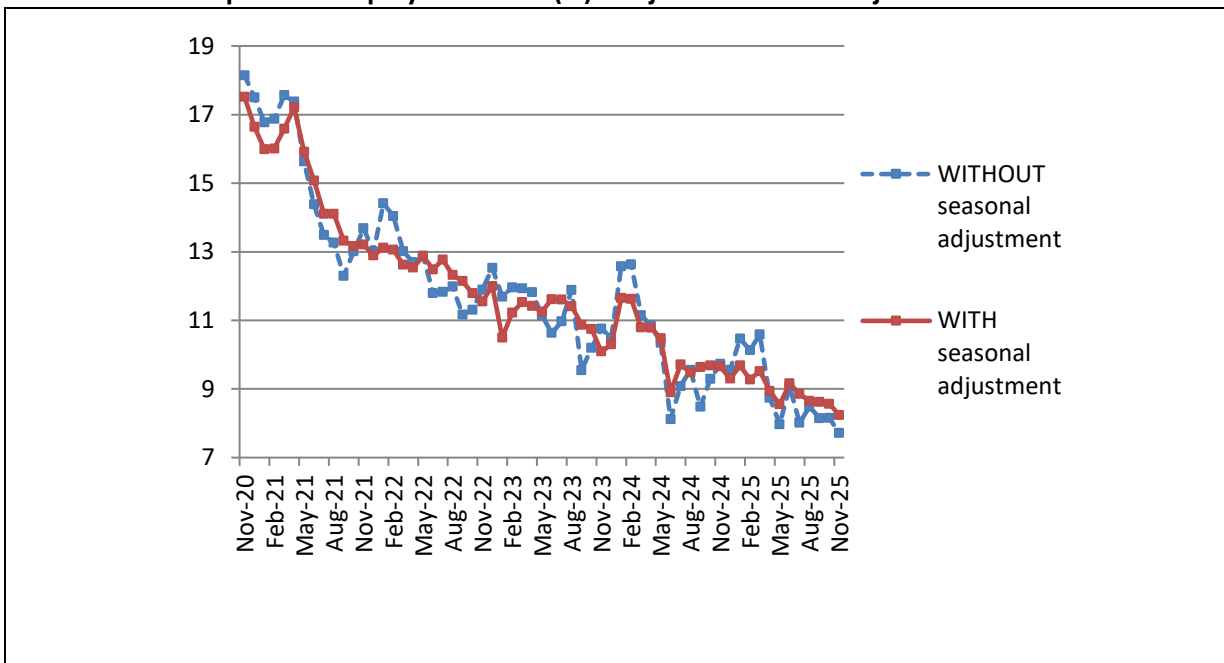
(in thousands)

Graph 4: Number of Unemployed Persons - Adjusted and Non-adjusted Estimates



(in thousands)

Graph 5: Unemployment Rate (%) - Adjusted and Non-adjusted Estimates



Revisions of monthly estimates

The monthly estimates for the number of employed and unemployed persons and the unemployment rate can be subject to revisions in the following months due to the updates to the seasonally adjusted series whenever new monthly data are added, to the inclusion of the most recent quarterly Labour Force Survey data, and the update of the seasonal adjustment model with complete annual data. In this publication the estimation of unemployment rate for the period September 2024 – November 2025 has been revised (compared to the estimation published in the previous publication) as follows:

Table 4: Comparison of seasonally adjusted estimates

	Estimations published on 02 December, 2025	Current estimations
September 2024	9.6	9.6
October 2024	9.7	9.7
November 2024	9.6	9.7
December 2024	9.3	9.3
January 2025	9.7	9.7
February 2025	9.3	9.3
March 2025	9.5	9.5
April 2025	8.9	8.9
May 2025	8.6	8.6
June 2025	9.2	9.2
July 2025	8.9	8.9
August 2025	8.6	8.6
September 2025	8.7	8.6
October 2025	8.6	8.6
November 2025	-	8.2

EXPLANATORY NOTES

Labour Force Survey	The Labour Force Survey has been conducted since 1981. Until 1997 the results were produced on an annual basis with reference to the second quarter of each year. From 1998 onwards it is a continuous quarterly survey. The main statistical objective of the Labour Force Survey is to divide the population of working age (15 years and over) into three mutually exclusive and exhaustive groups - persons in employment, unemployed persons, and persons outside the labour force. In addition, the Labour Force Survey collects information on demographic characteristics, on main job characteristics, on the existence and characteristics of a second job, on educational attainment, on participation in education, on previous working experience and on search of a job.
Legislation	The current survey is fully harmonized with the European legislation. The basic act is the Regulation (EU) No 2019/1700 of the European Parliament and of the Council establishing a common framework for European statistics relating to persons and households, which has been in force since 1/1/2021 and replaced Regulation (EC) 577/98. The implementing Regulation (EU) 2019/2240 sets out the design and characteristics of the survey and the implementing Regulation (EU) 2019/2241 lays down the technical elements of the monthly unemployment data.
Reference Period	The sample of Labour Force Survey is equally allocated to the 4 (or 5) weeks of the month. Every selected household is assigned to a specific week, the reference week, running from Monday to Sunday.
Coverage	For the monthly estimates, a sub-sample of the quarterly Labour Force survey's sample is used.
Definitions	<p>Employed: comprise persons aged 15 to 89 (in completed years at the end of the reference week) who, during the reference week, were in one of the following categories:</p> <ul style="list-style-type: none">a) persons who during the reference week worked for at least 1 hour for pay or profit, including contributing family workersb) persons with a job or business who were temporarily not at work during the reference week but had an attachment to their job, where the following groups have a job attachment:<ul style="list-style-type: none">- persons not at work due to holidays, working time arrangements, sick leave, maternity or paternity leave;- persons in job-related training;- persons on parental leave, either receiving and/or being entitled to job-related income or benefits, or whose parental leave is expected to be 3 months or less;- seasonal workers during the off-season, where they continue to regularly perform tasks and duties for the job or business, excluding fulfilment of legal or administrative obligations;- persons temporarily not at work for other reasons where the expected duration of the absence is 3 months or less. <p><i>Note: contributing family workers, persons in own-use production work, voluntary workers, unpaid trainees and individuals involved in other forms of work are defined in the 19th International Conference of Labour Statisticians (ICLS) Resolution concerning statistics of work, employment and labour underutilisation, adopted on 11 October 2013.</i></p> <p>Unemployed persons comprise persons aged 15 to 74 who were, during the reference week, (a) not employed, (b) currently available for work, and (c) actively seeking work, or found a job to start within a period of at most 3 months from the end of the reference week.</p> <p>Persons outside the labour force comprise persons who were in one of the following categories: (a) aged below 15, (b) aged above 89, or (c) aged 15 to 89 and neither employed nor unemployed during the reference week, according to the definitions of employment and unemployment described above.</p> <p>Economically active population (labour force) are persons either employed or unemployed.</p> <p>Unemployment Rate is the ratio of unemployed divided by total labour force.</p>

**Changes in
Labor Force
Survey as of
2021**

	Up to 2020	From 2021 onwards
Data collection	Paper questionnaires	By electronic means (CAPI)
Questionnaire	The number of the surveyed characteristics and the relevant questions remained the same for every quarter of the year.	The number of the surveyed characteristics and the relevant questions changes every quarter. For specific characteristics, only annual estimates are produced.
Definition of employed	<p>Population: Persons aged 15 years and over.</p> <p>Persons who reported that they did not work in the reference week but had a job from which they were temporarily absent are classified as employed, except in the following cases:</p> <ul style="list-style-type: none"> • Employees who are non-active, are absent for more than 3 months and receive less than 50 % of their salary. • Employees who are absent from work due to seasonality. <p>Self-employed persons are employed in all cases (including family workers).</p>	<p>Population: Persons aged 15-89 years.</p> <p>Persons who reported that they did not work in the reference week but had a job from which they were temporarily absent are considered to be employed only if the duration of their absence is less than 3 months or if they continue to receive income from their work.</p> <ul style="list-style-type: none"> • Sick leave, maternity/paternity leave, and educational leave are excluded, and in these cases, persons are classified as employed. <p>Seasonal workers, regardless of professional status, who reported that they did not work in the reference week but had a job from which they were temporarily absent due to seasonality are considered to be employed only if they perform tasks related to their work (e.g. renovation, business trip) excluding legal or administrative obligations.</p>

**Seasonal
adjustment**

Seasonal adjustment is a statistical technique that removes the seasonal component of a time series, making more visible the underlying trend in the change of a characteristic. Hellenic Statistical Authority is using JDemetra+ for seasonal adjustment. Seasonally adjusted series are produced by TRAMO&SEATS algorithm. It should be noted that due to seasonal adjustment the whole series with monthly estimates is recalculated every time a new month is added in time series. As a result, estimations for the previous months are often revised. Moreover, it is noted that every time a quarter is completed the non-seasonally adjusted results (employed, unemployed, outside the labour force) of the corresponding months are recalculated so that their averages are the same as the corresponding quarterly estimates (benchmarking).

**Sampling
errors**

The monthly results of Labour Force Survey are estimations that are based on a relatively small sample size and have large sampling errors. An indication of the magnitude of the survey's sampling errors is that estimations of characteristics that refer to 10,000 persons at the total country are accompanied by a coefficient of variation of at least 15%. More accurate estimates and detailed analysis of the changes in employment can be based on the quarterly results of the survey.

Methodology

Labour Force Survey's monthly estimates are produced by a suitable unbiased estimator which takes into account a) the probability of selection of every sampled household, b) the response rate in every primary sampling unit, c) the estimated population, for the corresponding month, allocated by NUTS II areas, gender and age group.

References

More information about the monthly Labor Force Survey can be found on the ELSTAT website, at the link: <https://www.statistics.gr/en/statistics/-/publication/SJO02/->