



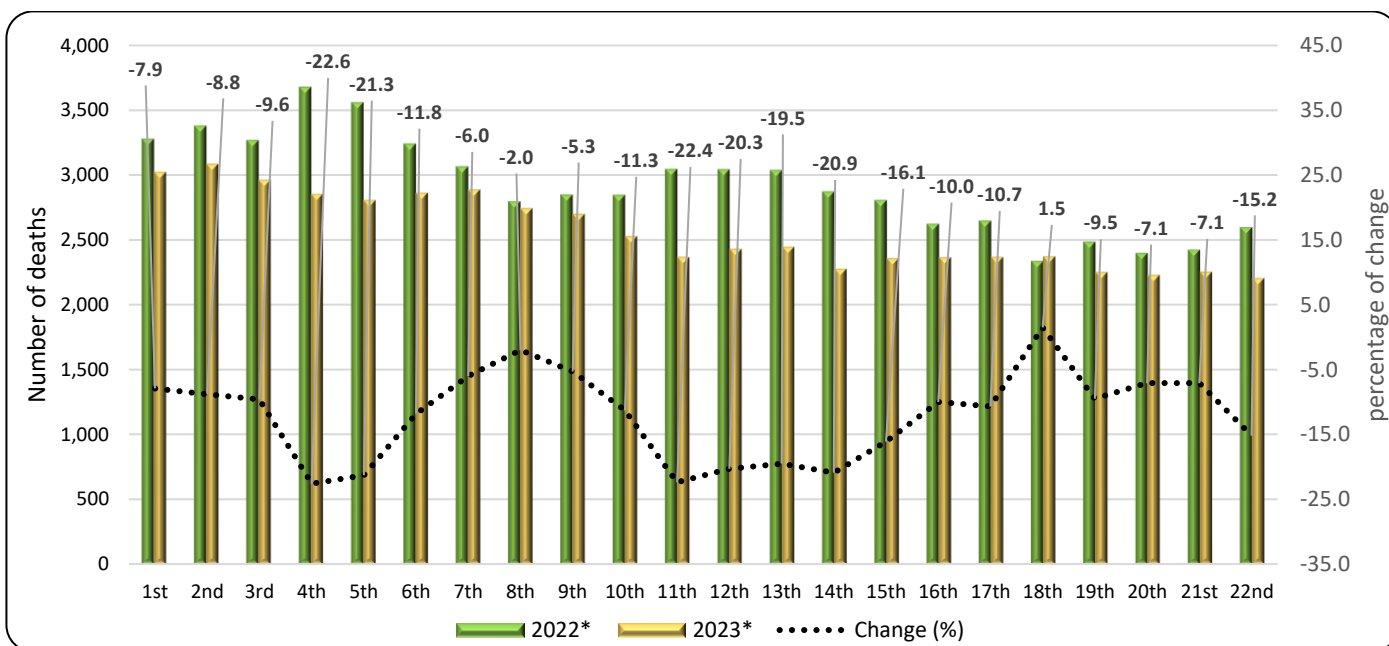
### DATA ON WEEKLY DEATHS: Period 1<sup>st</sup> to 22<sup>nd</sup> week, 2023

The Hellenic Statistical Authority (ELSTAT) announces the provisional statistical data depicting the weekly evolution of death counts for the period from the first (1<sup>st</sup>) to the twenty-second (22<sup>nd</sup>) week of 2023 (2/1/2023 – 4/6/2023). Data refer to the deaths that occurred in the Greek territory during that period due to various causes including deaths attributed to Covid-19.

The data included in this publication are compiled within the framework of the Vital Statistics Survey and are provided from the Municipal Civil Registers of Greece according to the vital events that have been declared and registered up until the date of data transmission. Overdue registrations of deaths are integrated at a later stage in the date of occurrence.

According to these data, **the number of deaths in Greece during the first twenty-two (22) weeks of 2023 (2/1/2023 – 4/6/2023) amounted to 56,285 (28,415 men and 27,870 women), whereas during the corresponding period of 2022 (3/1/2022 – 5/6/2022) had amounted to 64,268 (32,370 men and 31,898 women) recording a decrease of 7,983 deaths (-12.4%).** A decrease of 871 deaths (-1.5%) is recorded compared to the first twenty-two (22) week cumulative average of the six-year period 2017 – 2022 (57,156 deaths). The corresponding annual rates of change for the period 2017 - 2022 amount to 9.8% in 2022 compared to 2021 (58,556), 5.2% in 2021 compared to 2020 (55,644), -0.4% in 2020 compared to 2019 (55,869), 7.4% in 2019 compared to 2018 (52,001) and -8.1% in 2018 compared to 2017 (56,597) (Tables 1, 2, 3 and 4).

**Graph 1. Weekly evolution of deaths for the weeks 1<sup>st</sup> – 22<sup>nd</sup>, 2022 and 2023**



\*Provisional data

**Information on methodological issues:**

Population, Employment and Cost of Living Statistics Division  
Population and Migration Statistics Section  
Georgia Thymoglou, tel: +30 213 135 2175, e-mail: [g.thymoglou@statistics.gr](mailto:g.thymoglou@statistics.gr)  
Christos Christou, tel: +30 213 135 2884, e-mail : [c.christou@statistics.gr](mailto:c.christou@statistics.gr)

**Information on data provision:**

tel: +30 213 135 2022, 2308, 2310  
e-mail: [data.dissem@statistics.gr](mailto:data.dissem@statistics.gr)

**Table 1. Weekly evolution of deaths, 2022 and 2023**

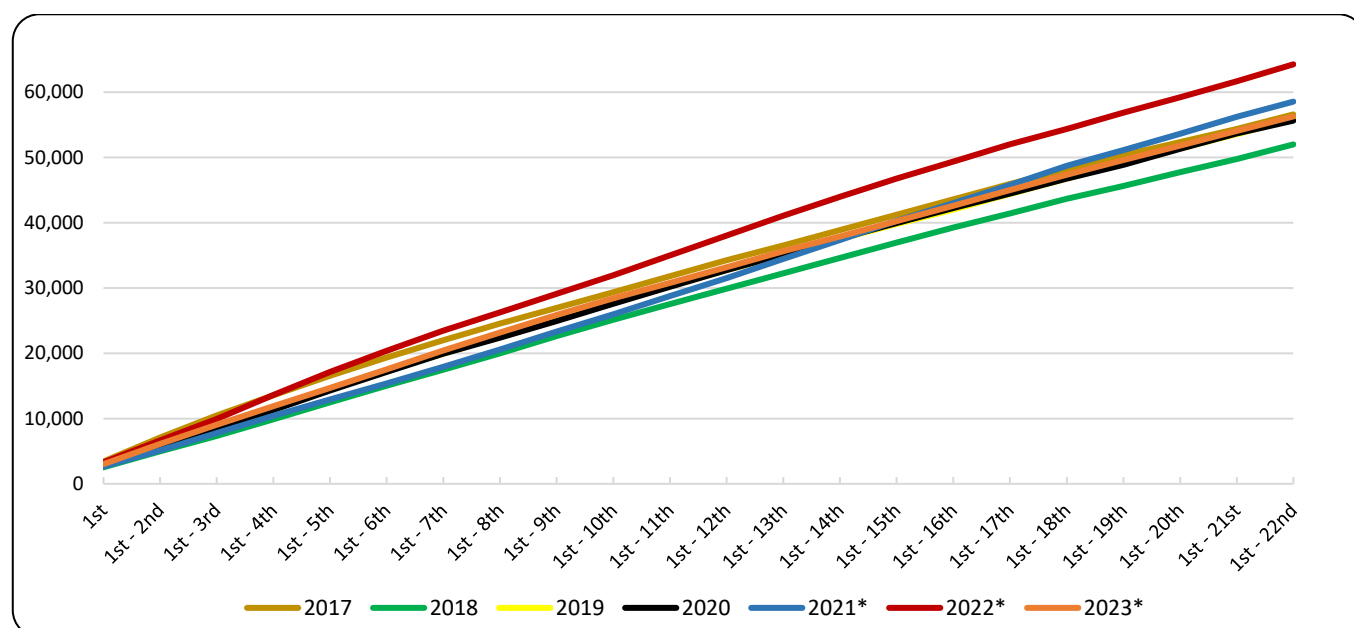
Week	2022*	2023*	Change (%)
1 <sup>st</sup>	3,278	3,019	-7.9
2 <sup>nd</sup>	3,378	3,080	-8.8
3 <sup>rd</sup>	3,269	2,956	-9.6
4 <sup>th</sup>	3,677	2,847	-22.6
5 <sup>th</sup>	3,558	2,800	-21.3
6 <sup>th</sup>	3,241	2,857	-11.8
7 <sup>th</sup>	3,065	2,882	-6.0
8 <sup>th</sup>	2,797	2,740	-2.0
9 <sup>th</sup>	2,847	2,695	-5.3
10 <sup>th</sup>	2,846	2,525	-11.3
11 <sup>th</sup>	3,046	2,364	-22.4
12 <sup>th</sup>	3,042	2,425	-20.3
13 <sup>th</sup>	3,037	2,444	-19.5
14 <sup>th</sup>	2,872	2,272	-20.9
15 <sup>th</sup>	2,806	2,355	-16.1
16 <sup>th</sup>	2,624	2,362	-10.0
17 <sup>th</sup>	2,647	2,364	-10.7
18 <sup>th</sup>	2,336	2,370	1.5
19 <sup>th</sup>	2,485	2,248	-9.5
20 <sup>th</sup>	2,398	2,227	-7.1
21 <sup>st</sup>	2,423	2,251	-7.1
22 <sup>nd</sup>	2,596	2,202	-15.2
<b>Total</b>	<b>64,268</b>	<b>56,285</b>	<b>-12.4</b>

\*Provisional data

According to the above data, for the first twenty-two (22) weeks of 2023 compared to the corresponding period of 2022, a decrease of deaths is observed for all weeks, except for the 18<sup>th</sup>. The highest percentage decreases of deaths are observed for the weeks 4<sup>th</sup> (23/1/2023 - 29/1/2023), 11<sup>th</sup> (13/3/2023 - 19/3/2023) and 5<sup>th</sup> (30/1/2023 - 5/2/2023) by 22.6%, 22.4% and 21.3% respectively.

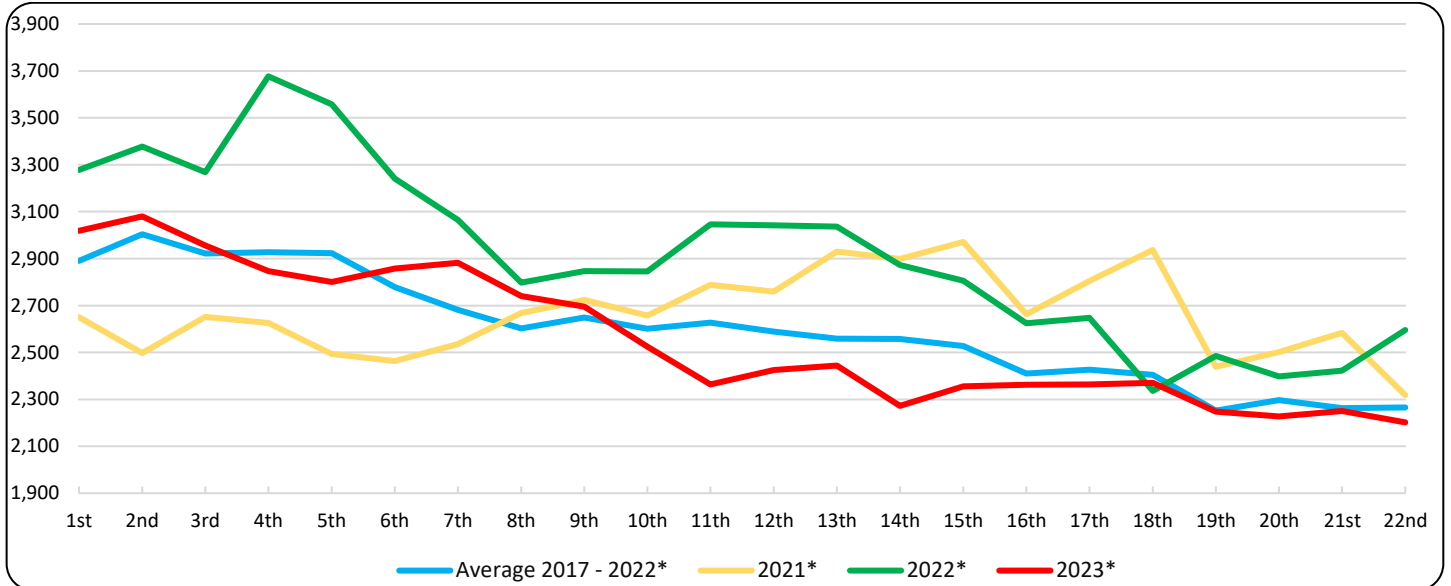
It should be noted that data are updated after integration of more recent data or upon revision of already transmitted data by the Registry Offices. Consequently, data may differ from those already announced in previous publications.

**Graph 2. Deaths for the weeks 1<sup>st</sup> – 22<sup>nd</sup>, 2017 - 2023 (cumulative)**



\*Provisional data

**Graph 3. Deaths by week for the weeks 1<sup>st</sup> – 22<sup>nd</sup>, 2021, 2022, 2023 and Average for the period 2017-2022**



\*Provisional data

**Table 2. Deaths for the weeks 1<sup>st</sup> – 22<sup>nd</sup>, 2017 - 2023 (cumulative)**

Week	2017	2018	2019	2020	2021*	2022*	2023*	Average 2017 - 2022*
1 <sup>st</sup>	3,425	2,533	2,706	2,749	2,650	3,278	3,019	2,890
1 <sup>st</sup> - 2 <sup>nd</sup>	7,105	4,986	5,811	5,659	5,147	6,656	6,099	5,894
1 <sup>st</sup> - 3 <sup>rd</sup>	10,469	7,331	8,850	8,522	7,798	9,925	9,055	8,816
1 <sup>st</sup> - 4 <sup>th</sup>	13,551	9,879	11,710	11,294	10,423	13,602	11,902	11,743
1 <sup>st</sup> - 5 <sup>th</sup>	16,553	12,484	14,603	14,284	12,916	17,160	14,702	14,667
1 <sup>st</sup> - 6 <sup>th</sup>	19,343	15,041	17,375	17,133	15,379	20,401	17,559	17,445
1 <sup>st</sup> - 7 <sup>th</sup>	22,018	17,510	19,938	19,915	17,914	23,466	20,441	20,127
1 <sup>st</sup> - 8 <sup>th</sup>	24,541	20,003	22,598	22,385	20,582	26,263	23,181	22,729
1 <sup>st</sup> - 9 <sup>th</sup>	26,940	22,613	25,367	24,928	23,306	29,110	25,876	25,377
1 <sup>st</sup> - 10 <sup>th</sup>	29,345	25,145	27,886	27,572	25,963	31,956	28,401	27,978
1 <sup>st</sup> - 11 <sup>th</sup>	31,789	27,560	30,356	30,168	28,751	35,002	30,765	30,604
1 <sup>st</sup> - 12 <sup>th</sup>	34,247	29,890	32,747	32,718	31,510	38,044	33,190	33,193
1 <sup>st</sup> - 13 <sup>th</sup>	36,500	32,255	35,079	35,157	34,440	41,081	35,634	35,752
1 <sup>st</sup> - 14 <sup>th</sup>	38,863	34,596	37,492	37,611	37,338	43,953	37,906	38,309
1 <sup>st</sup> - 15 <sup>th</sup>	41,226	36,945	39,804	39,973	40,309	46,759	40,261	40,836
1 <sup>st</sup> - 16 <sup>th</sup>	43,593	39,264	42,024	42,241	42,972	49,383	42,623	43,246
1 <sup>st</sup> - 17 <sup>th</sup>	45,918	41,439	44,427	44,446	45,777	52,030	44,987	45,673
1 <sup>st</sup> - 18 <sup>th</sup>	48,183	43,665	46,787	46,753	48,714	54,366	47,357	48,078
1 <sup>st</sup> - 19 <sup>th</sup>	50,342	45,645	49,110	48,880	51,153	56,851	49,605	50,330
1 <sup>st</sup> - 20 <sup>th</sup>	52,372	47,757	51,378	51,352	53,654	59,249	51,832	52,627
1 <sup>st</sup> - 21 <sup>st</sup>	54,385	49,778	53,588	53,681	56,238	61,672	54,083	54,890
1 <sup>st</sup> - 22 <sup>nd</sup>	56,597	52,001	55,869	55,644	58,556	64,268	56,285	57,156
<b>Change (%)</b>		<b>-8.1</b>	<b>7.4</b>	<b>-0.4</b>	<b>5.2</b>	<b>9.8</b>	<b>-12.4</b>	

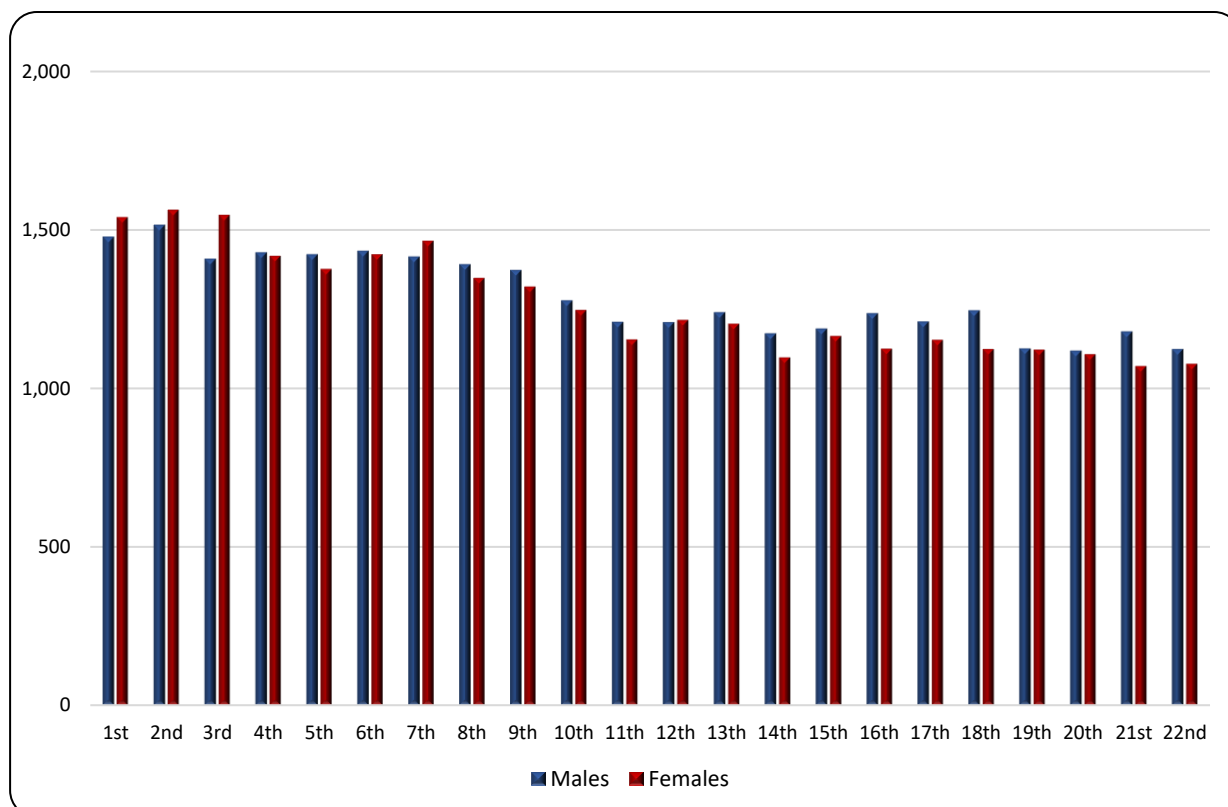
\*Provisional data

**Table 3. Weekly evolution of deaths by sex, for the weeks 1<sup>st</sup> – 22<sup>nd</sup>, 2023\***

Week	Total	Males	Females
1 <sup>st</sup>	3,019	1,479	1,540
2 <sup>nd</sup>	3,080	1,516	1,564
3 <sup>rd</sup>	2,956	1,409	1,547
4 <sup>th</sup>	2,847	1,429	1,418
5 <sup>th</sup>	2,800	1,423	1,377
6 <sup>th</sup>	2,857	1,434	1,423
7 <sup>th</sup>	2,882	1,416	1,466
8 <sup>th</sup>	2,740	1,392	1,348
9 <sup>th</sup>	2,695	1,374	1,321
10 <sup>th</sup>	2,525	1,278	1,247
11 <sup>th</sup>	2,364	1,210	1,154
12 <sup>th</sup>	2,425	1,209	1,216
13 <sup>th</sup>	2,444	1,240	1,204
14 <sup>th</sup>	2,272	1,174	1,098
15 <sup>th</sup>	2,355	1,189	1,166
16 <sup>th</sup>	2,362	1,237	1,125
17 <sup>th</sup>	2,364	1,211	1,153
18 <sup>th</sup>	2,370	1,246	1,124
19 <sup>th</sup>	2,248	1,126	1,122
20 <sup>th</sup>	2,227	1,119	1,108
21 <sup>st</sup>	2,251	1,180	1,071
22 <sup>nd</sup>	2,202	1,124	1,078
<b>Total</b>	<b>56,285</b>	<b>28,415</b>	<b>27,870</b>

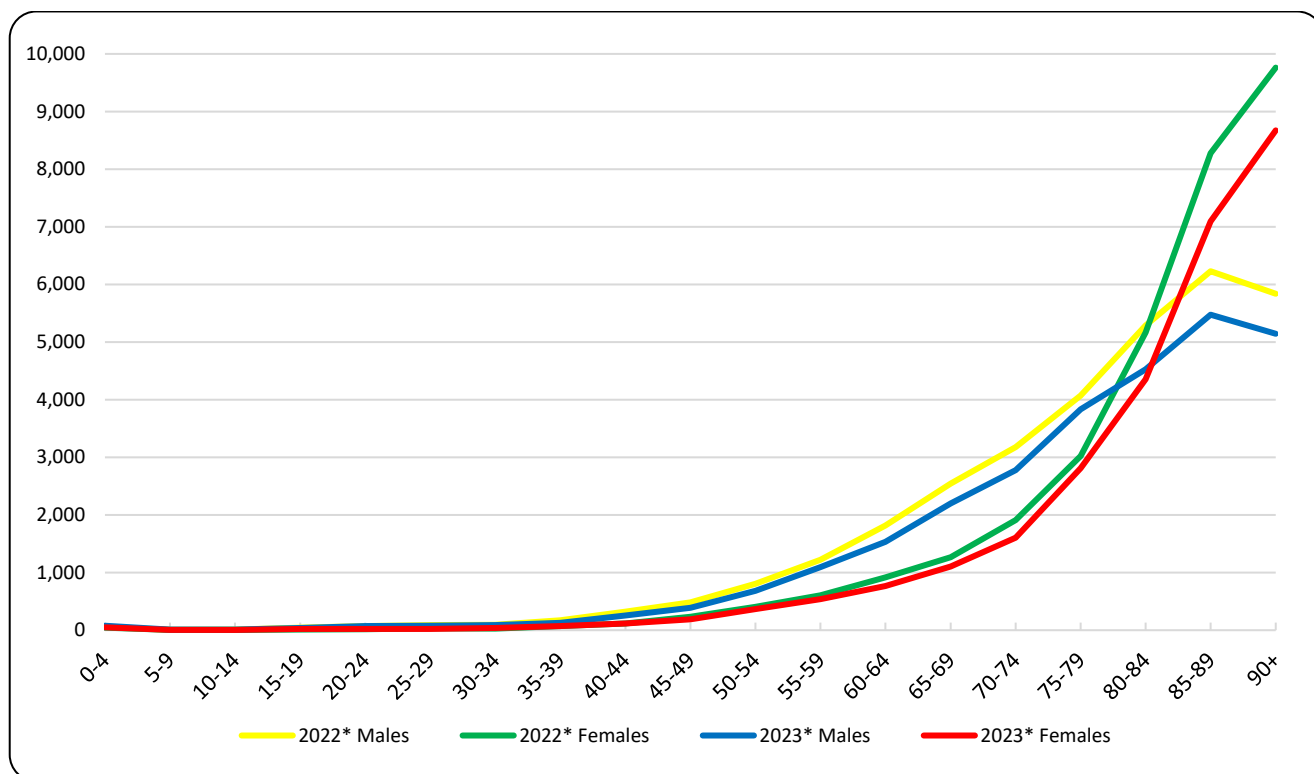
\*Provisional data

**Graph 4. Weekly evolution of deaths by sex, for the weeks 1<sup>st</sup> – 22<sup>nd</sup>, 2023\***



\*Provisional data

**Graph 5. Deaths by age group and sex, 1<sup>st</sup> – 22<sup>nd</sup> week, 2022 and 2023**



\*Provisional data

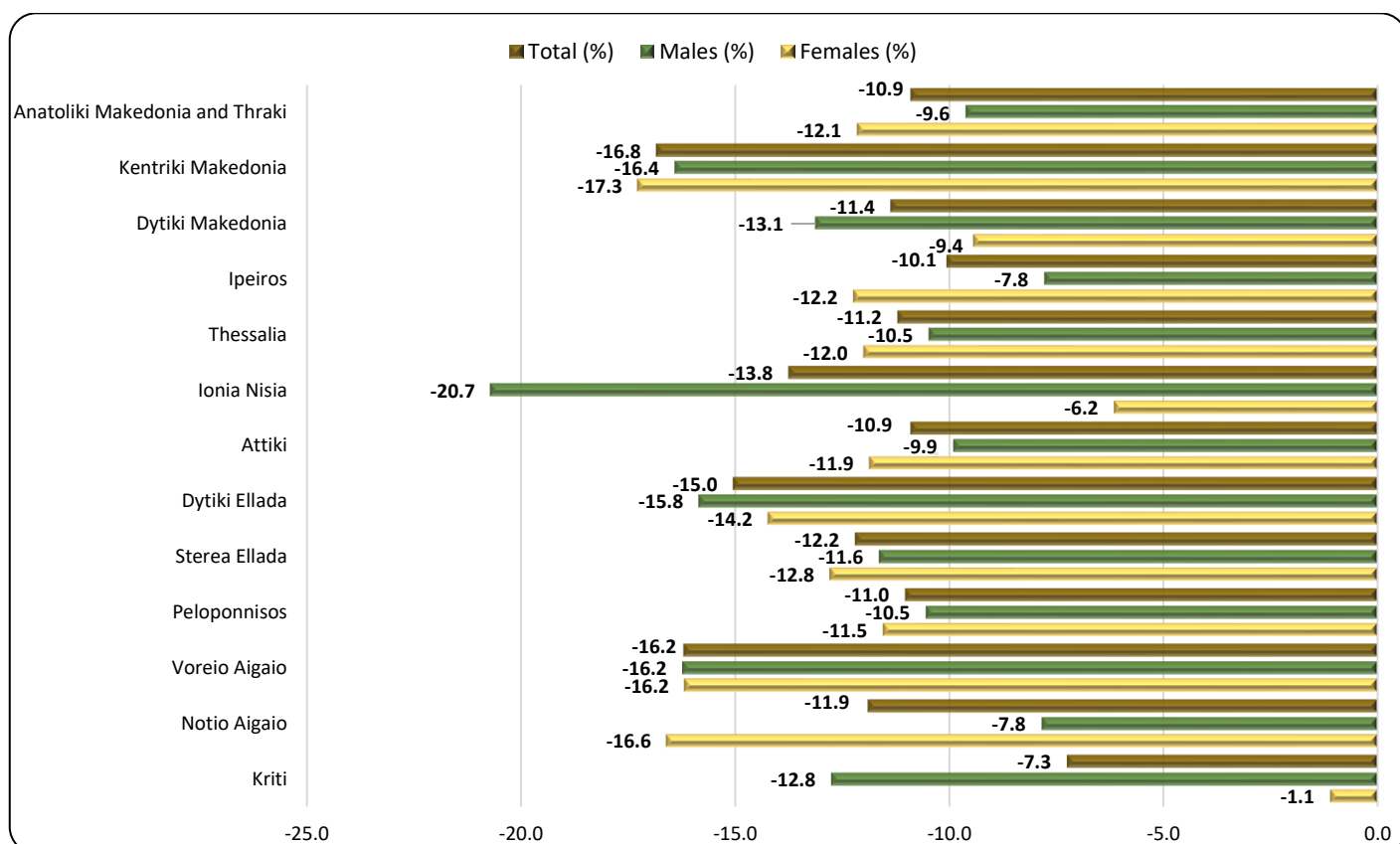
**Table 4. Deaths by age group and sex, weeks 1<sup>st</sup> – 22<sup>nd</sup>, 2022 and 2023**

Age Group	2022*			2023*		
	Total	Males	Females	Total	Males	Females
0 - 4	103	61	42	126	77	49
5 - 9	14	7	7	19	11	8
10 - 14	18	13	5	18	13	5
15 - 19	56	43	13	61	40	21
20 - 24	87	71	16	91	70	21
25 - 29	120	88	32	101	79	22
30 - 34	126	96	30	126	87	39
35 - 39	241	170	71	200	127	73
40 - 44	437	320	117	375	256	119
45 - 49	718	485	233	578	387	191
50 - 54	1,212	806	406	1,049	682	367
55 - 59	1,829	1,222	607	1,632	1,093	539
60 - 64	2,733	1,818	915	2,300	1,531	769
65 - 69	3,810	2,542	1,268	3,304	2,201	1,103
70 - 74	5,088	3,179	1,909	4,386	2,778	1,608
75 - 79	7,097	4,074	3,023	6,645	3,833	2,812
80 - 84	10,457	5,290	5,167	8,882	4,526	4,356
85 - 89	14,504	6,229	8,275	12,569	5,475	7,094
90+	15,603	5,841	9,762	13,817	5,144	8,673
Unknown	15	15	0	6	5	1
<b>Total</b>	<b>64,268</b>	<b>32,370</b>	<b>31,898</b>	<b>56,285</b>	<b>28,415</b>	<b>27,870</b>

\*Provisional data

As regards the breakdown of data by age, during the first twenty-two (22) weeks of 2023 compared to the corresponding period of 2022, a decrease of deaths is observed for most age groups, with the highest decreases, in absolute figures, being recorded for the age groups 85 to 89 (-1,935 deaths), over 90 (-1,786 deaths) and 80 to 84 (-1,575 deaths) (Table 4).

**Graph 6. Annual change of deaths 2023\*/2022\* (%) by sex and Region of usual residence, weeks 1<sup>st</sup> – 22<sup>nd</sup>**



\*Provisional data

**Table 5. Annual change of deaths 2023/2022 (%) by sex and Region of usual residence, weeks 1<sup>st</sup> – 22<sup>nd</sup>**

Region	2022*			2023*			Change (%)		
	Total	Males	Females	Total	Males	Females	Total	Males	Females
Anatoliki Makedonia and Thraki	3,769	1,851	1,918	3,358	1,673	1,685	-10.9	-9.6	-12.1
Kentriki Makedonia	11,441	5,736	5,705	9,515	4,795	4,720	-16.8	-16.4	-17.3
Dytiki Makedonia	1,759	922	837	1,559	801	758	-11.4	-13.1	-9.4
Ipeiros	2,027	989	1,038	1,823	912	911	-10.1	-7.8	-12.2
Thessalia	4,586	2,386	2,200	4,072	2,136	1,936	-11.2	-10.5	-12.0
Ionia Nisia	1,360	710	650	1,173	563	610	-13.8	-20.7	-6.2
Attiki	21,465	10,555	10,910	19,125	9,509	9,616	-10.9	-9.9	-11.9
Dytiki Ellada	4,360	2,209	2,151	3,704	1,859	1,845	-15.0	-15.8	-14.2
Sterea Ellada	3,534	1,821	1,713	3,103	1,609	1,494	-12.2	-11.6	-12.8
Peloponnisos	3,934	2,020	1,914	3,500	1,807	1,693	-11.0	-10.5	-11.5
Voreio Aigaio	1,210	604	606	1,014	506	508	-16.2	-16.2	-16.2
Notio Aigaio	1,496	803	693	1,318	740	578	-11.9	-7.8	-16.6
Kriti	3,239	1,709	1,530	3,004	1,491	1,513	-7.3	-12.8	-1.1
Unknown	88	55	33	17	14	3	-80.7	-74.5	-90.9
<b>Total</b>	<b>64,268</b>	<b>32,370</b>	<b>31,898</b>	<b>56,285</b>	<b>28,415</b>	<b>27,870</b>	<b>-12.4</b>	<b>-12.2</b>	<b>-12.6</b>
Abroad	131	83	48	251	155	96	91.6	86.7	100.0

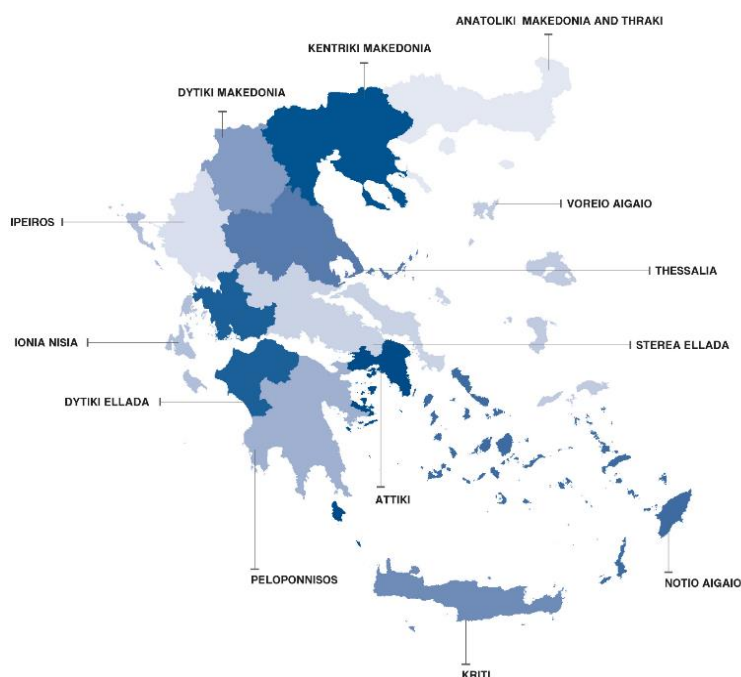
\*Provisional data

As regards the breakdown of data by place of usual residence of the deceased person, during the first twenty-two (22) weeks of 2023, a decrease of deaths is observed in all thirteen (13) Regions of the Country, compared to the corresponding period of 2022. The most notable decreases, in absolute figures, are observed in the Regions of Attiki, Kentriki Makedonia and Dytiki Ellada by 2,340, 1,926 and 656 deaths respectively (Graph 6, Table 5).

## EXPLANATORY NOTES

<b>Vital Statistics-Data on weekly deaths</b>	For the Vital statistics Survey, data are provided by Civil Register Offices from all over the Country. Data presented in this publication refer to the weekly evolution of death counts according to the international standard of weeks ISO 8601. This is a data processing for the purpose of depicting, even using provisional data, the evolution of deaths in the Country and timely recording of mortality levels in relation to basic demographic variables.
<b>Reference periods</b>	2022: 3/1/2022 - 5/6/2022 2023: 2/1/2023 - 4/6/2023
<b>Legal Framework</b>	Law 344/76 concerning the “Registration of vital events” which lays down the obligations of the Civil Register Offices to collect and then transmit the data, as well as by Law 3832/2010 on the “Greek Statistical System”, both as amended.
<b>Coverage</b>	The Vital Statistics survey is an exhaustive survey and covers all deaths of usual resident population that occur in the Greek territory.
<b>Definitions</b>	All deaths of usual residents taking place in the Greek territory are recorded, regardless of the cause of death. Deaths of usual resident population of other countries are also recorded but not counted. The deaths of migrants-refugees during their attempt to approach the Greek islands from the Turkish shores (drownings) are not included.  Causes of death are defined according to the International Statistical Classification of Diseases and Related Health Problems (ICD-10) and basic categories are Diseases of the Circulatory System, Diseases of the Respiratory System, Neoplasms, Infectious and Parasitic Diseases, Violent deaths and other causes, Covid-19 included.
<b>Methodology</b>	Data on deaths and vital statistics undergo the necessary quality checks, are processed, and presented in the form of tables.
<b>Geographical classification</b>	Geographical classification is based on the Nomenclature of Territorial Units for Statistics (NUTS). Data are disseminated at Country and Region (NUTS2) level.

**Map of the Regions (NUTS2) of Greece**



**International  
Standard of  
Dates**

According to the international standard ISO 8601 the first twenty-two (22) weeks of 2022 and 2023 are defined as follows:

WEEK	2022	2023
1 <sup>st</sup>	3/1/2022 - 9/1/2022	2/1/2023 - 8/1/2023
2 <sup>nd</sup>	10/1/2022 - 16/1/2022	9/1/2023 - 15/1/2023
3 <sup>rd</sup>	17/1/2022 - 23/1/2022	16/1/2023 - 22/1/2023
4 <sup>th</sup>	24/1/2022 - 30/1/2022	23/1/2023 - 29/1/2023
5 <sup>th</sup>	31/1/2022 - 6/2/2022	30/1/2023 - 5/2/2023
6 <sup>th</sup>	7/2/2022 - 13/2/2022	6/2/2023 - 12/2/2023
7 <sup>th</sup>	14/2/2022 - 20/2/2022	13/2/2023 - 19/2/2023
8 <sup>th</sup>	21/2/2022 - 27/2/2022	20/2/2023 - 26/2/2023
9 <sup>th</sup>	28/2/2022 - 6/3/2022	27/2/2022 - 5/3/2023
10 <sup>th</sup>	7/3/2022 - 13/3/2022	6/3/2023 - 12/3/2023
11 <sup>th</sup>	14/3/2022 - 20/3/2022	13/3/2023 - 19/3/2023
12 <sup>th</sup>	21/3/2022 - 27/3/2022	20/3/2023 - 26/3/2023
13 <sup>th</sup>	28/3/2022 - 3/4/2022	27/3/2023 - 2/4/2023
14 <sup>th</sup>	4/4/2022 - 10/4/2022	3/4/2023 - 9/4/2023
15 <sup>th</sup>	11/4/2022 - 17/4/2022	10/4/2023 - 16/4/2023
16 <sup>th</sup>	18/4/2022 - 24/4/2022	17/4/2023 - 23/4/2023
17 <sup>th</sup>	25/4/2022 - 1/5/2022	24/4/2023 - 30/4/2023
18 <sup>th</sup>	2/5/2022 - 8/5/2022	1/5/2023 - 7/5/2023
19 <sup>th</sup>	9/5/2022 - 15/5/2022	8/5/2023 - 14/5/2023
20 <sup>th</sup>	16/5/2022 - 22/5/2022	15/5/2023 - 21/5/2023
21 <sup>st</sup>	23/5/2022 - 29/5/2022	22/5/2023 - 28/5/2023
22 <sup>nd</sup>	30/5/2022 - 5/6/2022	29/5/2023 - 4/6/2023

**References**

More information on deaths and Vital Statistics is available on the website of ELSTAT: <https://www.statistics.gr/en/home/> following the link: Statistics, Population and Social Conditions, Demography.