



HELLENIC REPUBLIC
HELLENIC STATISTICAL AUTHORITY

Piraeus, 30 November 2021

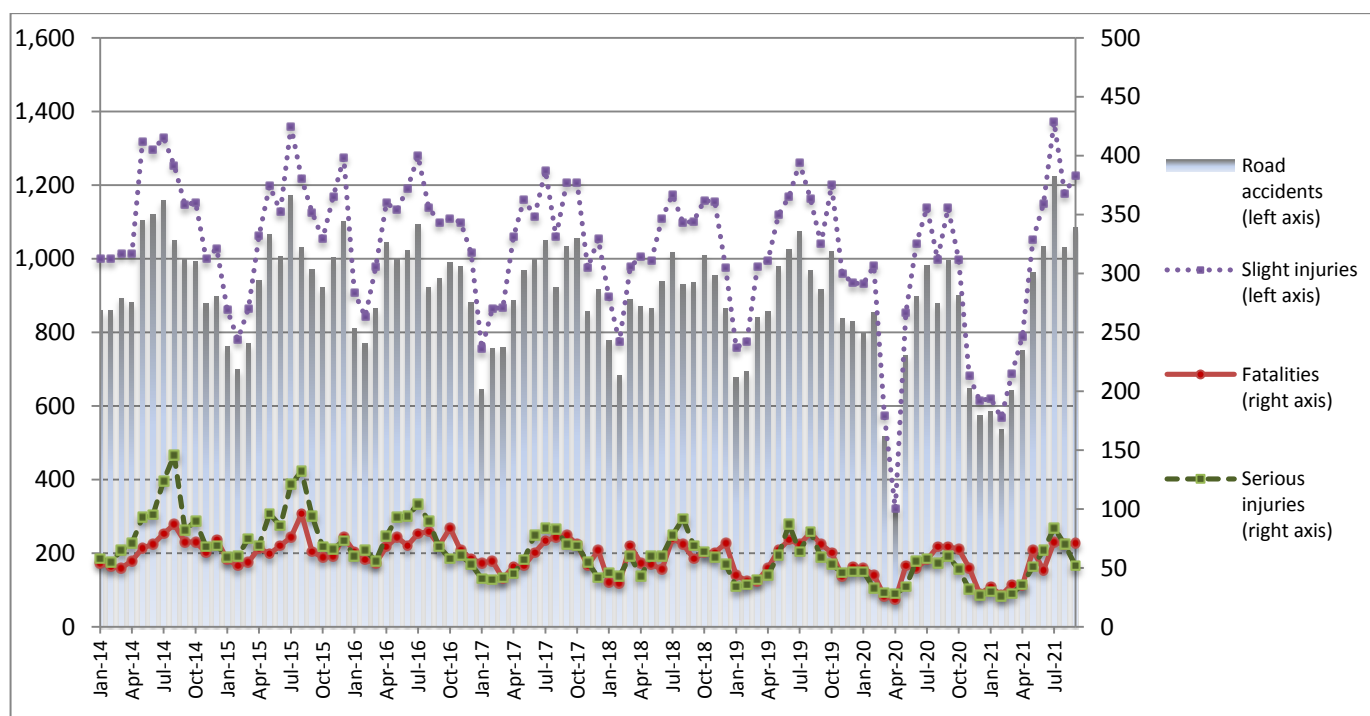
PRESS RELEASE

ROAD TRAFFIC ACCIDENTS: September 2021

The Hellenic Statistical Authority (ELSTAT) announces provisional¹ data from the survey on “Road Traffic Accidents” for September 2021. In particular, the road traffic accidents which occurred in Greece, resulting in death or injury, increased by 9.1% in comparison with the corresponding month of 2020 (1,086 road accidents in September 2021, against 995 road accidents in September 2020).

The casualties of the injury-causing accidents that occurred in September 2021 were as follows: 71 deaths, 52 serious injuries and 1,226 slight injuries. In contrast, in September 2020 the corresponding figures were: 68 deaths, 60 serious injuries and 1,138 slight injuries. Therefore, road traffic accident casualties in September 2021 increased by 4.4% for deaths and by 7.7% for slight injuries and decreased by 13.3% for serious injuries.

**Graph 1: Road traffic accidents and casualties,
January 2014 - September 2021**



Provisional data for the period October 2020 – September 2021

Information on methodological issues:

Sectoral Statistics Division
Transport Statistics Section
P. Tzortzi, L. Miliara
Tel: +30 213 135 2187, +30 213 135 3095
e-mail: p.tzortzi@statistics.gr, l.miliara@statistics.gr

Information for data provision:

Tel: +30 213 135 2022, 2308, 2310
e-mail: data.dissem@statistics.gr

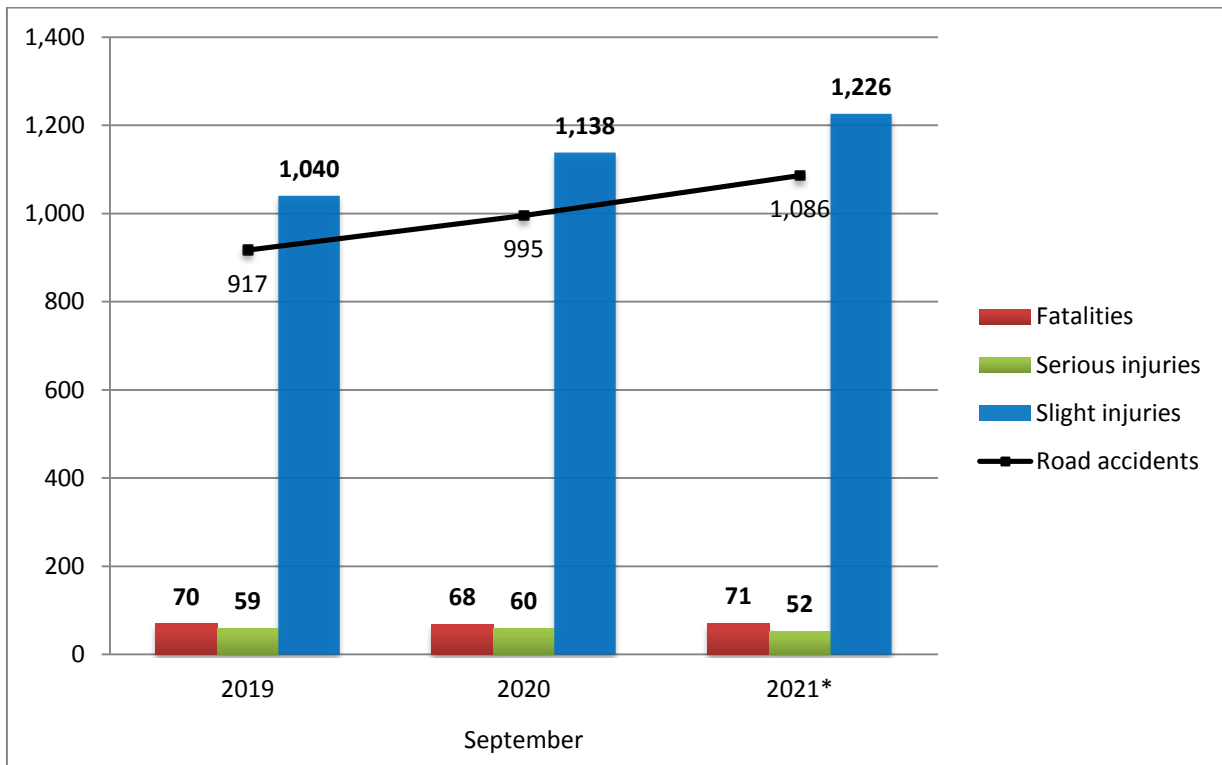
^[1] Data for the reference year is provisional until the finalization of the annual data, which takes place 10 months after the end of the reference year and is published in the corresponding press release of the following year. During these 10 months the provisional data is updated on the basis of the data of the Road Accident Forms of that year which is transmitted to ELSTAT by Police Authorities (see explanatory notes).

Table 1: Road traffic accidents and casualties, September 2019 - 2021*

	September				
	2019	2020	2020/2019 (%)	2021*	2021*/2020 (%)
Road accidents	917	995	8.5	1,086	9.1
Fatalities	70	68	-2.9	71	4.4
Total injuries	1,099	1,198	9.0	1,278	6.7
Serious injuries	59	60	1.7	52	-13.3
Slight injuries	1,040	1,138	9.4	1,226	7.7

* Provisional data

Graph 2: Road traffic accidents and casualties, September 2019 - 2021*



* Provisional data

Table 2: Road traffic accidents and casualties, by region and department, September 2020 and 2021*

Region and department	Road accidents			Fatalities			Serious injuries			Slight injuries		
	2020	2021*	%	2020	2021*	%	2020	2021*	%	2020	2021*	%
Greece Total	995	1,086	9.1	68	71	4.4	60	52	-13.3	1,138	1,226	7.7
Anatoliki Makedonia and Thraki (East Macedonia and Thrace)	36	34	-5.6	3	4	33.3	5	1	-80.0	41	36	-12.2
Drama	14	10	-28.6	0	0		2	1		15	12	
Evros	10	7	-30.0	2	0		0	0		11	7	
Kavala	8	2	-75.0	1	1		1	0		10	3	
Xanthi	1	5	400.0	0	1		0	0		2	4	
Rodopi	3	10	233.3	0	2		2	0		3	10	
Kentriki Makedonia (Central Macedonia)	164	181	10.4	10	7	-30.0	4	4	0.0	191	203	6.3
Imathia	6	3	-50.0	3	0		1	0		2	4	
Thessaloniki	130	151	16.2	2	4		0	2		160	169	
Kilkis	5	7	40.0	0	1		0	0		5	7	
Pella	1	5	400.0	1	0		0	1		0	5	
Pieria	3	2	-33.3	1	1		0	1		2	0	
Serres	7	2	-71.4	2	1		2	0		7	1	
Chalkidiki	12	11	-8.3	1	0		1	0		15	17	
Dytiki Makedonia (West Macedonia)	4	5	25.0	2	2	0.0	0	0	-	3	4	33.3
Grevena	0	0	-	0	0		0	0		0	0	
Kastoria	0	1	-	0	1		0	0		0	0	
Kozani	4	3	-25.0	2	0		0	0		3	3	
Florina	0	1	-	0	1		0	0		0	1	
Ipeiros (Epirus)	15	11	-26.7	9	2	-77.8	1	0	-100.0	16	13	-18.8
Arta	5	0	-100.0	3	0		1	0		1	0	
Thesprotia	1	4	300.0	0	1		0	0		2	5	
Ioannina	6	4	-33.3	0	1		0	0		9	5	
Preveza	3	3	0.0	6	0		0	0		4	3	
Thessalia (Thessaly)	22	21	-4.5	4	1	-75.0	6	5	-16.7	26	22	-15.4
Karditsa	6	7	16.7	0	0		2	0		8	10	
Larissa	10	9	-10.0	2	0		2	3		14	9	
Magnissia	5	3	-40.0	2	1		2	1		2	2	
Trikala	1	2	100.0	0	0		0	1		2	1	
Ionian Nisia (Ionian Islands)	18	25	38.9	2	1	-50.0	5	4	-20.0	12	28	133.3
Zakynthos	4	9	125.0	0	0		2	2		2	7	
Kerkyra	9	11	22.2	2	0		1	2		7	13	
Kefallinia	4	1	-75.0	0	0		2	0		2	2	
Lefkada	1	4	300.0	0	1		0	0		1	6	

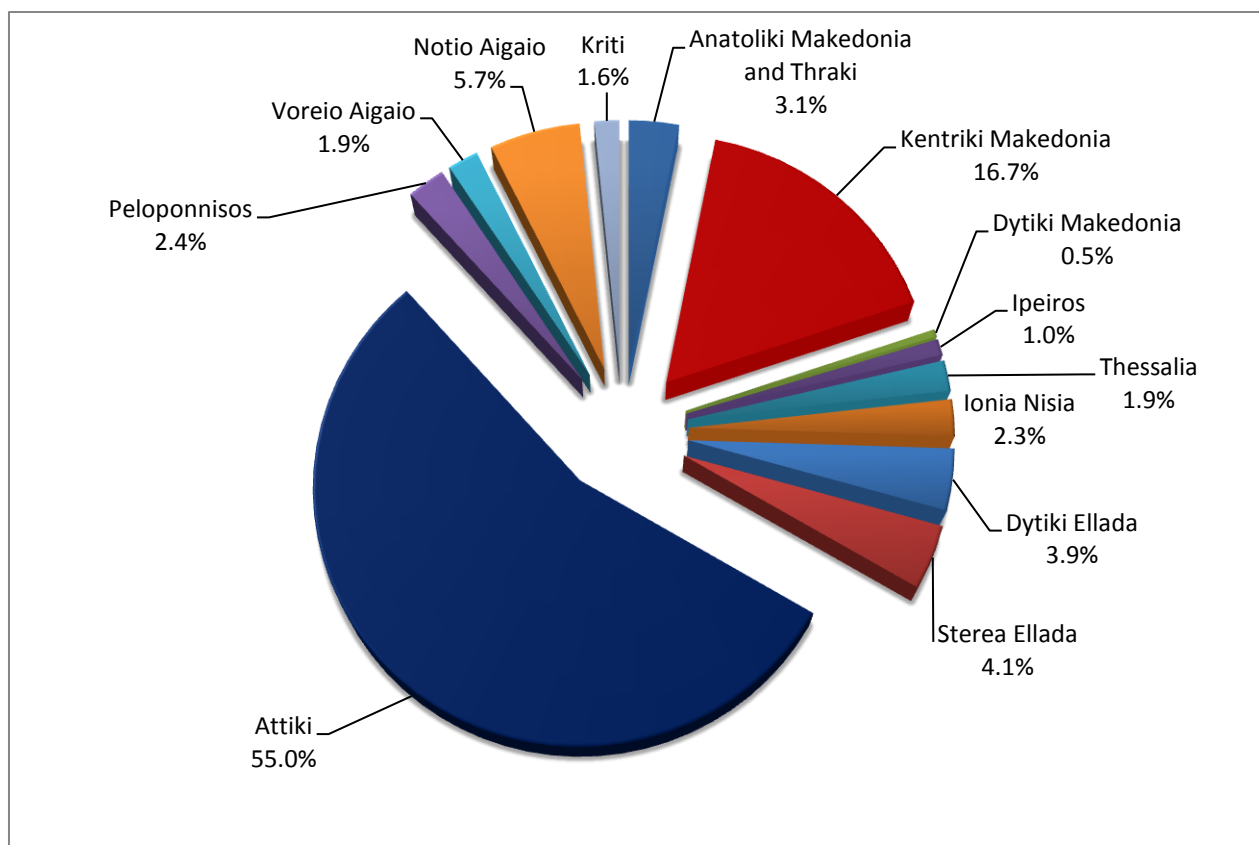
* Provisional data

Table 2: Road traffic accidents and casualties, by region and department, September 2020 and 2021* (Continued)

Region and department	Road accidents			Fatalities			Serious injuries			Slight injuries		
	2020	2021*	%	2020	2021*	%	2020	2021*	%	2020	2021*	%
Dytiki Ellada (West Greece)	51	42	-17.6	6	3	-50.0	3	6	100.0	58	51	-12.1
Etolia & Akarnania	19	20	5.3	1	0		3	4		19	23	
Achaia	24	14	-41.7	1	2		0	1		30	18	
Ilia	8	8	0.0	4	1		0	1		9	10	
Sterea Ellada	49	44	-10.2	6	6	0.0	2	9	350.0	54	46	-14.8
Viotia	12	9	-25.0	2	1		0	1		15	11	
Evia	23	18	-21.7	2	4		1	5		25	13	
Evrytania	3	0	-100.0	0	0		0	0		3	0	
Fthiotida	10	11	10.0	2	0		0	3		11	16	
Fokida	1	6	500.0	0	1		1	0		0	6	
Attiki (Attica)	527	597	13.3	15	23	53.3	22	10	-54.5	614	681	10.9
Peloponnisos (Peloponnese)	33	26	-21.2	3	5	66.7	3	1	-66.7	41	35	-14.6
Argolida	4	6	50.0	0	1		0	0		5	7	
Arkadia	6	6	0.0	0	0		1	0		5	12	
Korinthia	19	8	-57.9	2	2		2	1		27	11	
Lakonia	0	2	-	0	1		0	0		0	2	
Messinia	4	4	0.0	1	1		0	0		4	3	
Voreio Aigaio (North Aegean)	16	21	31.3	1	4	300.0	0	2	-	17	22	29.4
Lesvos	10	15	50.0	0	4		0	1		12	17	
Samos	3	5	66.7	0	0		0	1		3	4	
Chios	3	1	-66.7	1	0		0	0		2	1	
Notio Aigaio (South Aegean)	45	62	37.8	5	4	-20.0	6	7	16.7	48	65	35.4
Dodekanissos	17	24	41.2	4	1		1	3		13	23	
Kyklades	28	38	35.7	1	3		5	4		35	42	
Kriti (Crete)	15	17	13.3	2	9	350.0	3	3	0.0	17	20	17.6
Iraklio	9	7	-22.2	2	4		3	1		5	4	
Lassithi	1	1	0.0	0	1		0	0		1	0	
Rethymno	2	3	50.0	0	0		0	1		7	3	
Chania	3	6	100.0	0	4		0	1		4	13	

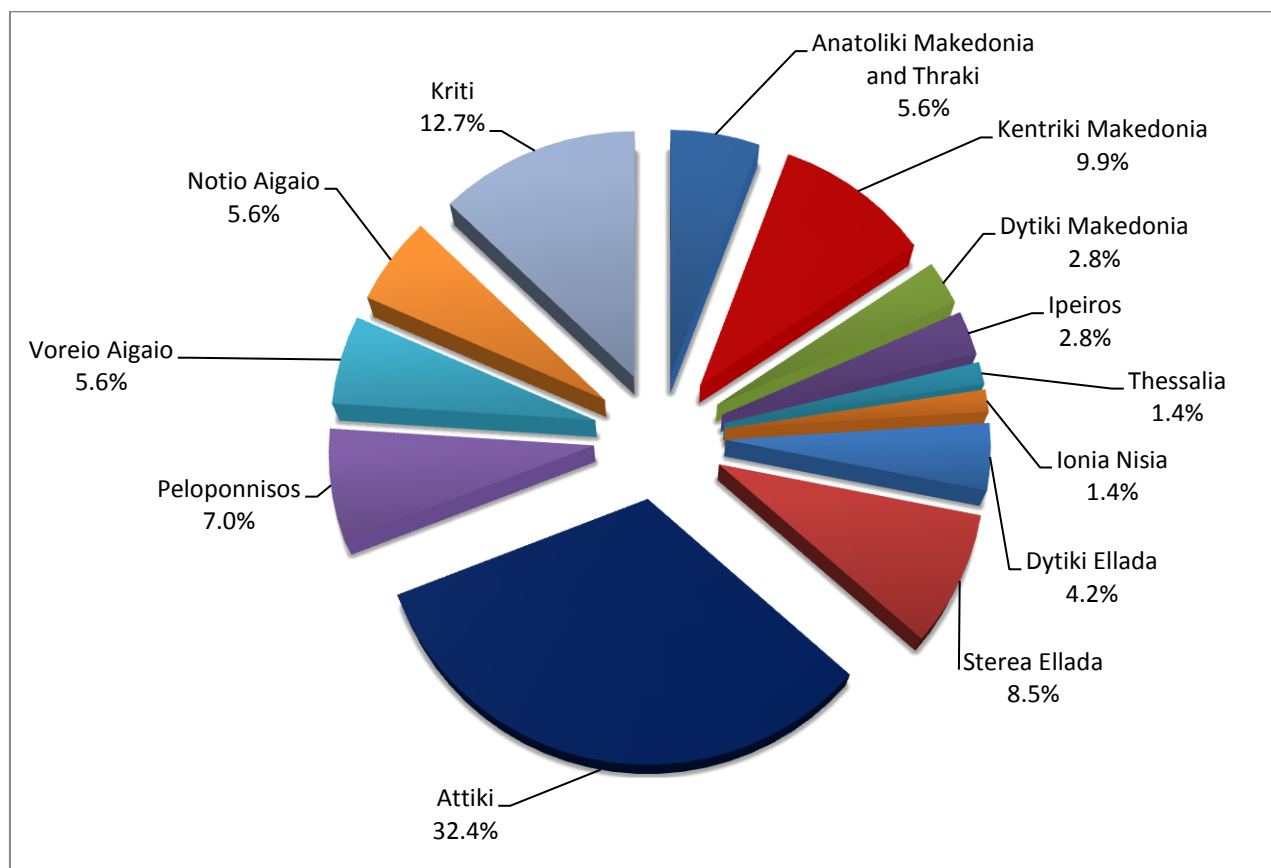
* Provisional data

Graph 3: Road traffic accidents by region, September 2021 *



* Provisional data

Graph 4: Fatalities by region, September 2021 *



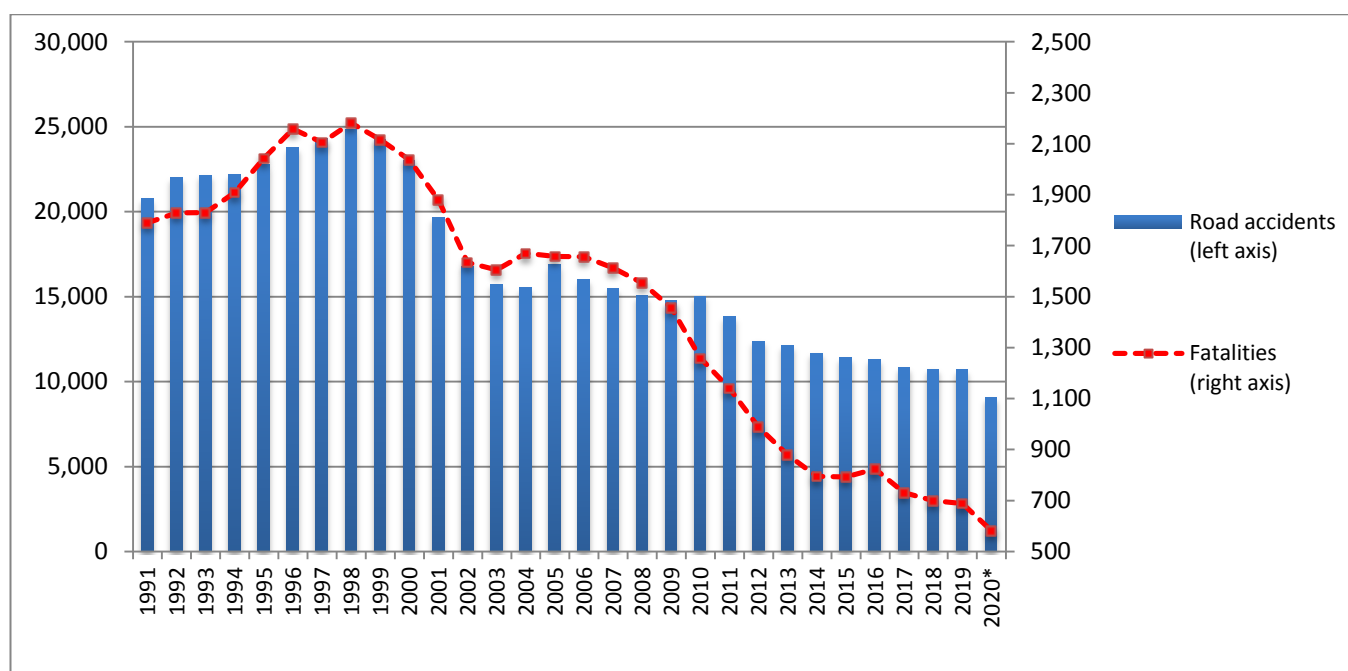
* Provisional data

Table 3: Road traffic accidents and casualties for the period January - September 2019, 2020 and 2021*

	2019		2020		2021 *
	January - September	Total year	January - September	Total year*	January - September
Road Accidents	8,025	10,712	6,971	9,090	7,847
Annual Change (%)			-13.1	-15.1	12.6
Fatalities	531	688	438	582	458
Annual Change (%)			-17.5	-15.4	4.6
Serious injuries	506	652	399	507	442
Annual Change (%)			-21.1	-22.2	10.8
Slight injuries	9,256	12,350	7,976	10,269	8,642
Annual Change (%)			-13.8	-16.9	8.4

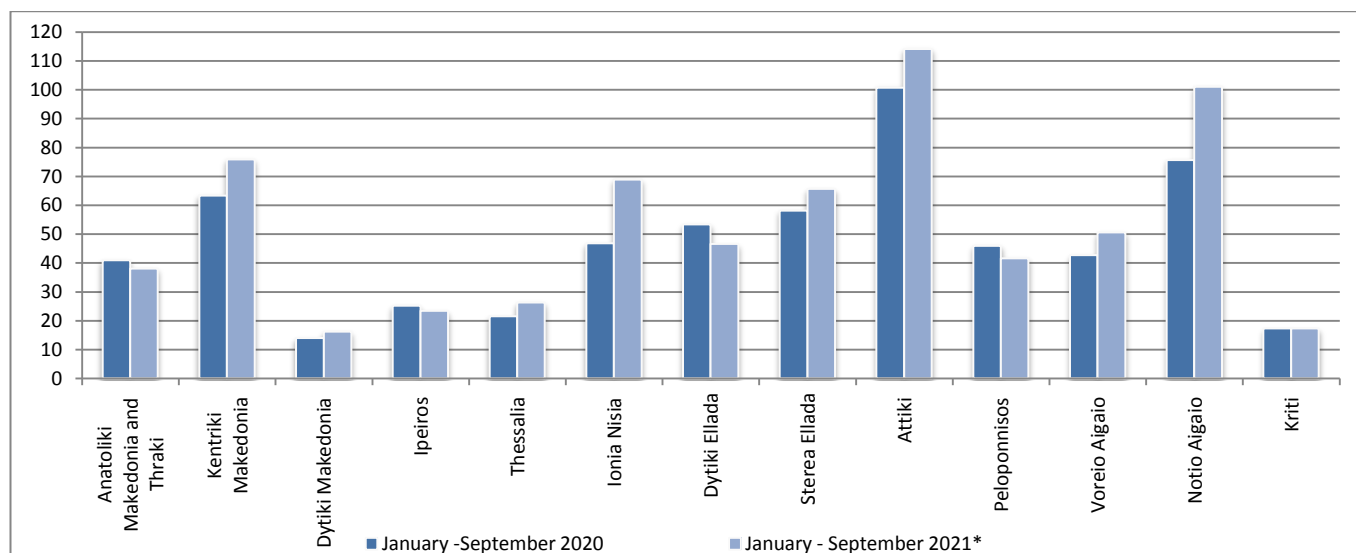
* Provisional data

Graph 5: Total road traffic accidents and fatalities, 1991-2020*



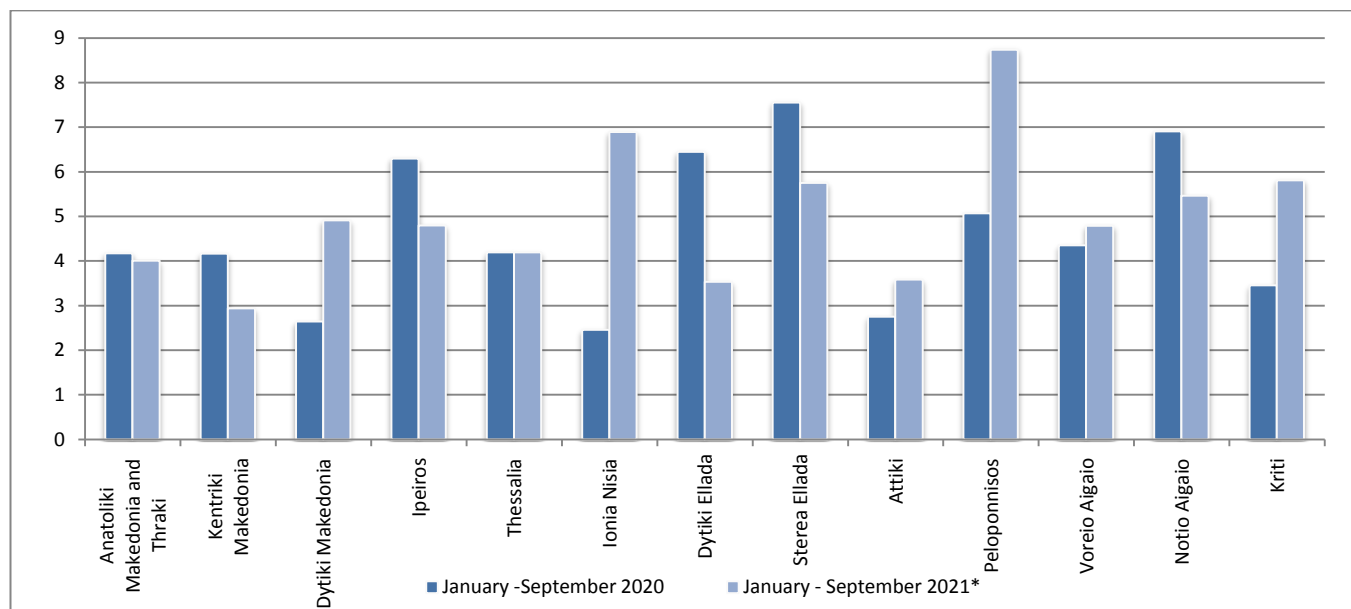
* Provisional data for the period October 2020 – December 2020

Graph 6: Road traffic accidents per 100,000 inhabitants for the period January - September 2020 and 2021*

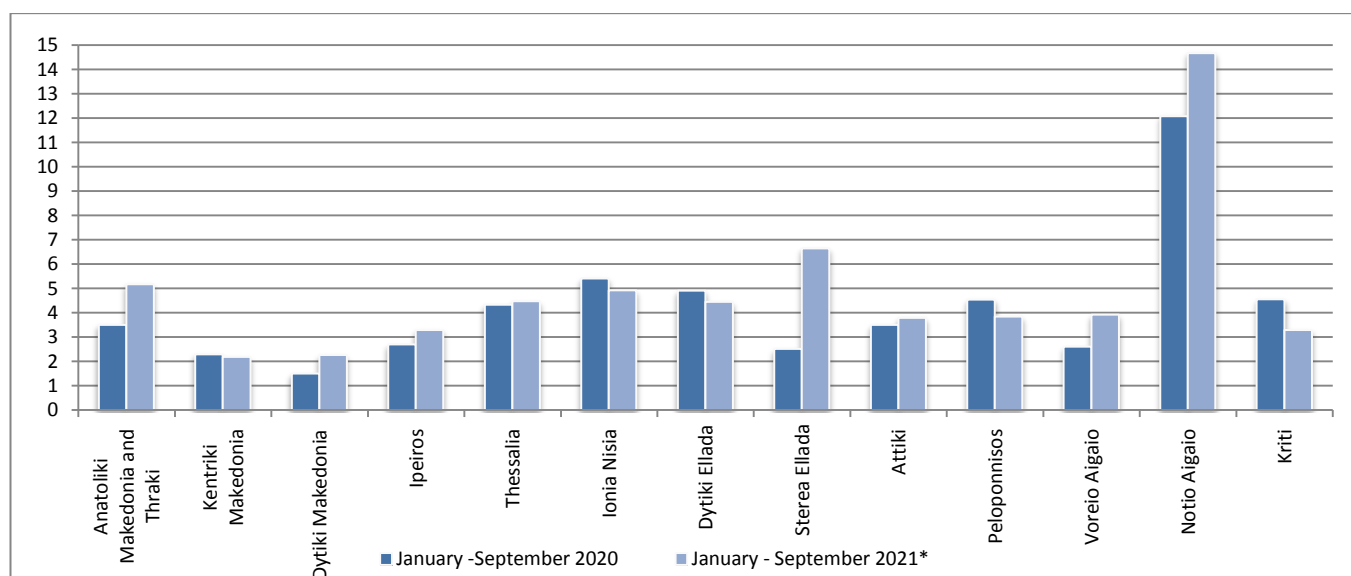


* Provisional data

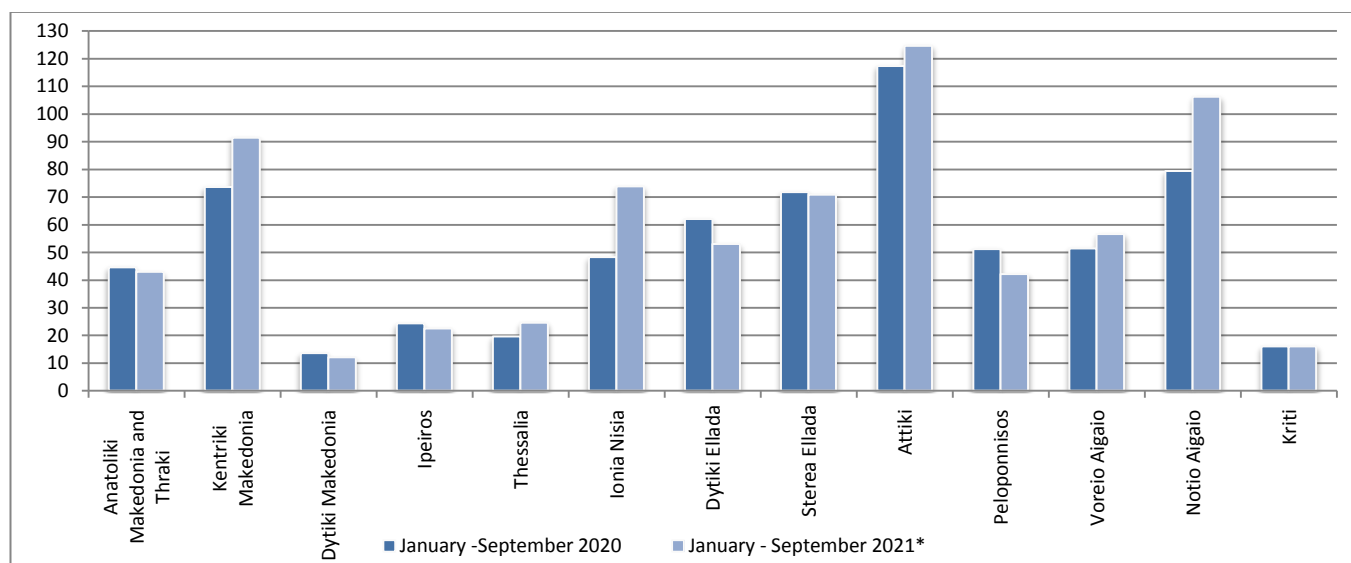
Graph 7: Fatalities per 100,000 inhabitants for the period January - September 2020 and 2021*



Graph 8: Serious injuries per 100,000 inhabitants for the period January - September 2020 and 2021*



Graph 9: Slight injuries per 100,000 inhabitants for the period January - September 2020 and 2021*



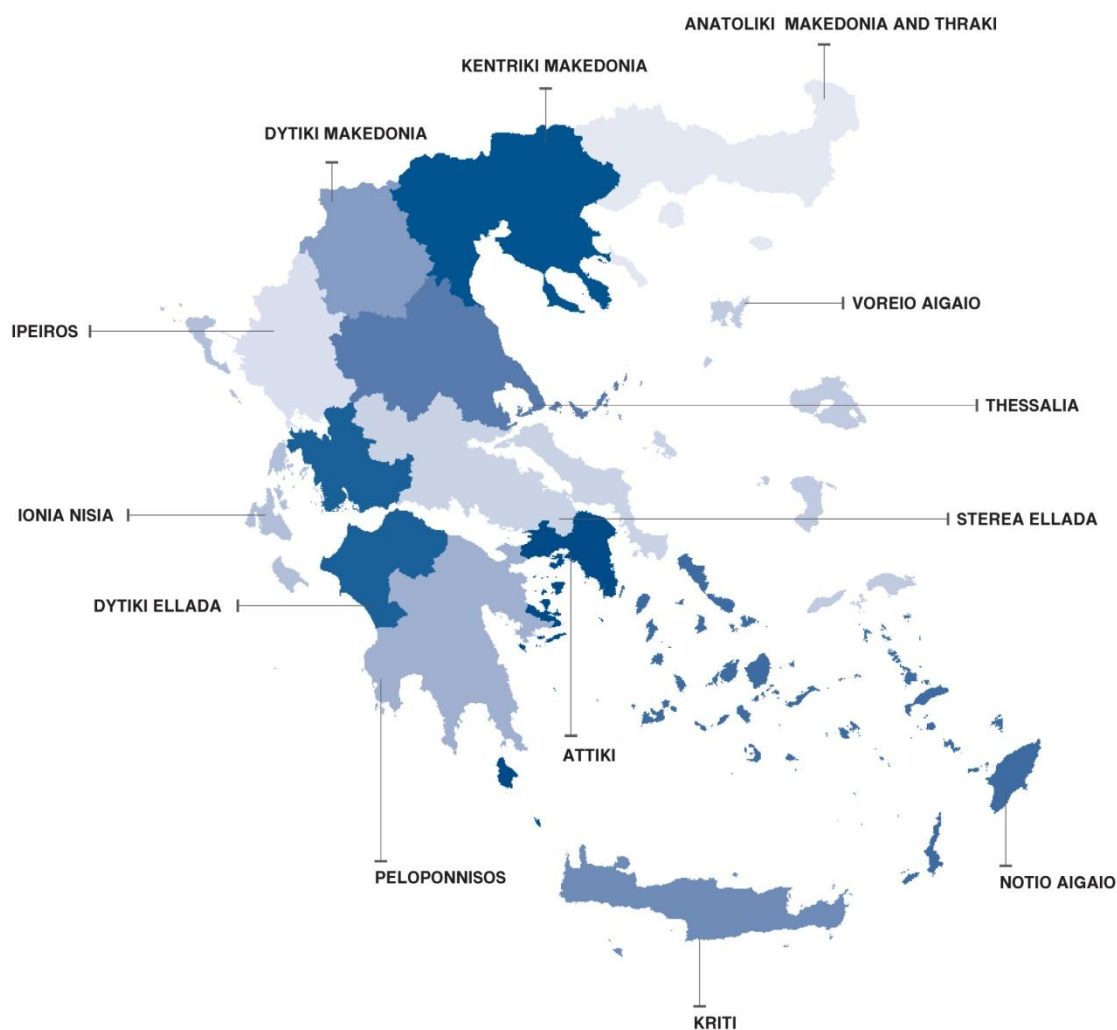
* Provisional data

EXPLANATORY NOTES

Survey on Road Traffic Accidents The Survey on Road Traffic Accidents is conducted on a monthly basis and it records, for each region (see map) and department of Greece and for each month separately, the number of accidents resulting in death or injury, as well as the number of persons injured by categories (drivers, passengers, pedestrians).

On a yearly basis, road traffic accidents are further analyzed. The competent agencies for filling in/collecting the forms on road accidents are the local Police Authorities and the local Port Authorities of Greece.

The lower level of analysis for the place where an injury road accident occurred is the settlement. Data are collected on a monthly basis. The main variables are the following: place of accident, kind of road, casualties, conditions of road surface and type of road.



Legal basis The Survey on Road Traffic Accidents is governed by Council Decision 93/704 of the European Community.

Reference period Monthly.

Availability of data Provisional data are available 2 months after the reference month.
Final data are available 10 months after the reference year.

Definitions **Road accident** (injury accident): Any accident involving at least one road motor vehicle in motion on a public road or square to which the public has access (excluding yards, industrial sites or vehicle depot of public transport enterprises), resulting in at least one injured or killed person. Accidents with only material damages are not included.

Fatality (Death): Any person killed immediately or dying within 30 days as a result of an injury accident (This national definition applies since 01.01.1996)

Person injured: Any person who sustained an injury as result of an injury accident, and who normally needs medical treatment.

Serious injury: Any person who sustained an injury as result of an injury accident, such as brain damages, mutilation, multiple injuries, which may result in lack of awareness or which are life-threatening.

Slight injury: Any person injured who sustained minor and not life-threatening injuries.

Vehicle: Include motor vehicles, trolleybuses, motorcycles, bicycles, motorbikes, agricultural and road making machines, animal and hand-drawn vehicles. Railway vehicles are excluded, unless the road accident involves at least one of the aforementioned types of vehicles and therefore, railway vehicles are considered vehicles.

Methodology The forms of the survey are filled in by the local Police Authorities and the local Port Authorities as well.

References More information about Road Traffic Accidents is available on ELSTAT's website and more specifically at the link: <https://www.statistics.gr/en/statistics/-/publication/SDT03/->.