



## PRESS RELEASE

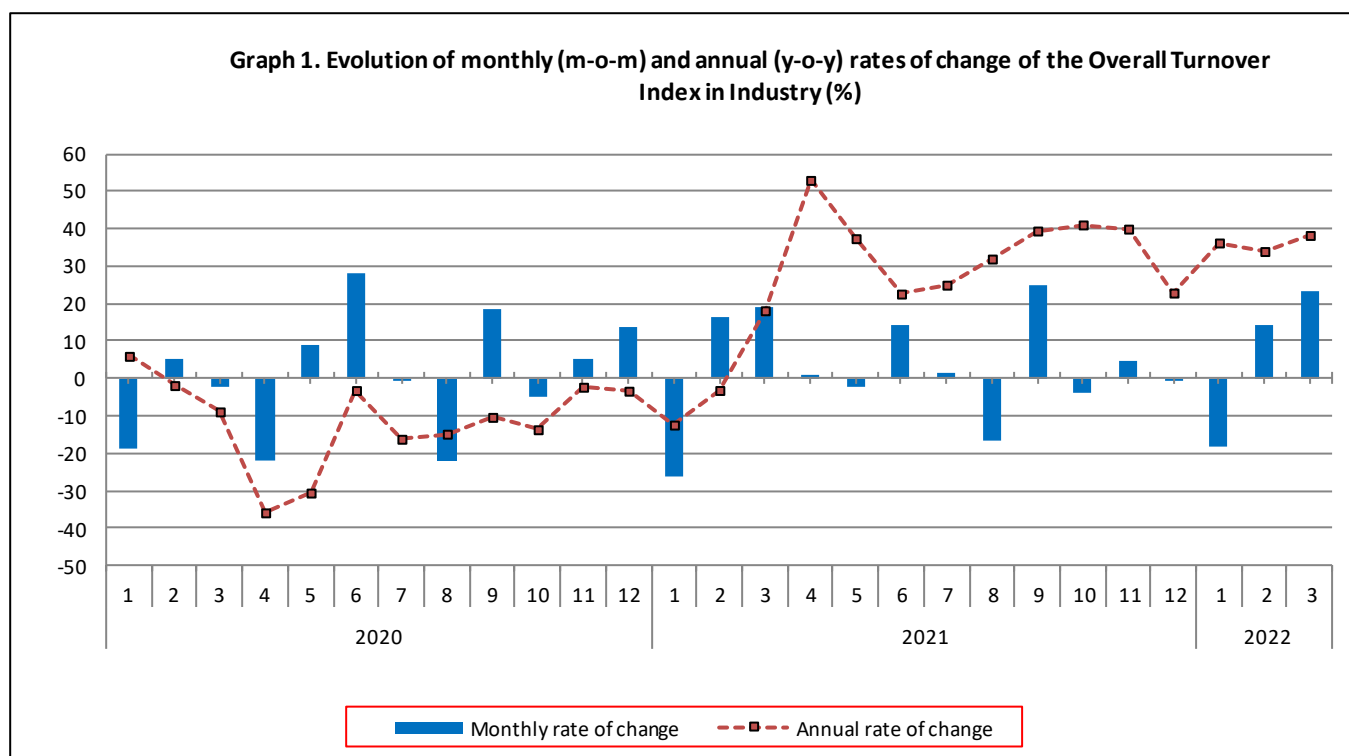
### TURNOVER INDEX IN INDUSTRY: March 2022, y-o-y increase of 38.3%

The Hellenic Statistical Authority announces the Turnover Index in Industry with base year 2015=100.0 for March 2022, the evolution of which on the basis of provisional data, is as follows:

The Overall Turnover Index in Industry (both Domestic and Non-Domestic Market) in March 2022 recorded an increase of 38.3% compared with the corresponding index of March 2021. The Overall Turnover Index in Industry in March 2021 increased by 18.2% compared with the corresponding index in March 2020 (Table 1).

The Overall Turnover Index in Industry in March 2022, compared with February 2022, recorded an increase of 23.1% (Table 6).

The average Overall Turnover Index in Industry for the 12-month period from April 2021 to March 2022 increased by 34.6%, compared with the corresponding index of the 12-month period from April 2020 to March 2021. The average Overall Turnover Index in Industry for the 12-month period from April 2020 to March 2021 decreased by 11.3% compared with the corresponding index of the 12-month period from April 2019 to March 2020 (Table 13).



#### Information for methodological issues:

Division of Business Statistics  
Section of Manufacture-Construction Indices and Industrial Products  
Head of the Section : Diamantaki Aikaterini  
Tel: +30 213 135 2056  
E-mail: [a.diamantaki@statistics.gr](mailto:a.diamantaki@statistics.gr)

#### Information for data provision:

Tel: +30 213 135 2022, 2308, 2310  
E-mail: [data.dissem@statistics.gr](mailto:data.dissem@statistics.gr)

## Evolution of the Overall Turnover Index in Industry in March 2022

### I. Annual changes of the Overall Turnover Index in Industry: March 2022/ March 2021

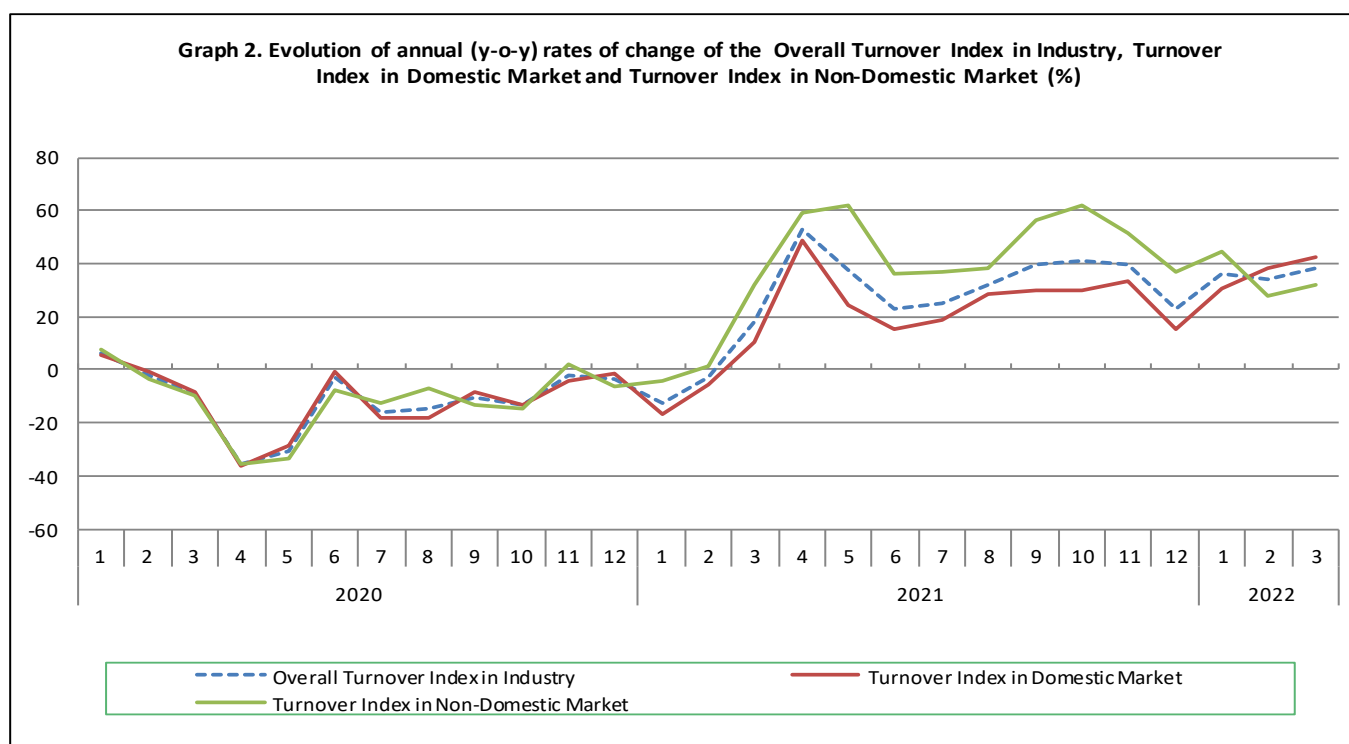
The 38.3% increase in the Overall Turnover Index in Industry in March 2022, compared with the corresponding index in March 2021, was due to the following:

#### 1. Changes in the sub-indices of the industrial sections (Table 1):

- The Turnover Index in Manufacturing increased by 38.9%. The increase was mainly the result of the annual changes of the sub-indices in the following 2-digit divisions: coke and refined petroleum products, basic metals, wearing apparel, food.
- The Turnover Index in Mining and quarrying decreased by 7.8%. The decrease was the result of the annual change of the sub-index in the following 2-digit division: mining of metal ores.

#### 2. Changes in the sub-indices in Domestic and Non-Domestic Markets:

- The Turnover Index in Industry in Domestic Market increased by 42.6% (Table 2).
- The Turnover Index in Industry in Non-Domestic Market increased by 32.2% (Table 3).



### II. Annual changes of the Turnover Index in Industry in Domestic Market: March 2022/ March 2021

The 42.6% increase of the Turnover Index in Industry in Domestic Market in March 2022, compared with March 2021, is due to the annual changes in the sub-indices of the following industrial sections (Table 2):

- The Turnover Index in Manufacturing increased by 42.8%. The increase was mainly the result of the annual changes of the sub-indices in the following 2-digit divisions: coke and refined petroleum products, wearing apparel, basic metals, food.
- The Turnover Index in Mining and quarrying increased by 17.5%. The increase was mainly the result of the annual changes of the sub-indices in the following 2-digit divisions: other mining and quarrying products, mining of metal ores.

### III. Annual changes of the Turnover Index in Industry in Non-Domestic Market: March 2022/ March 2021

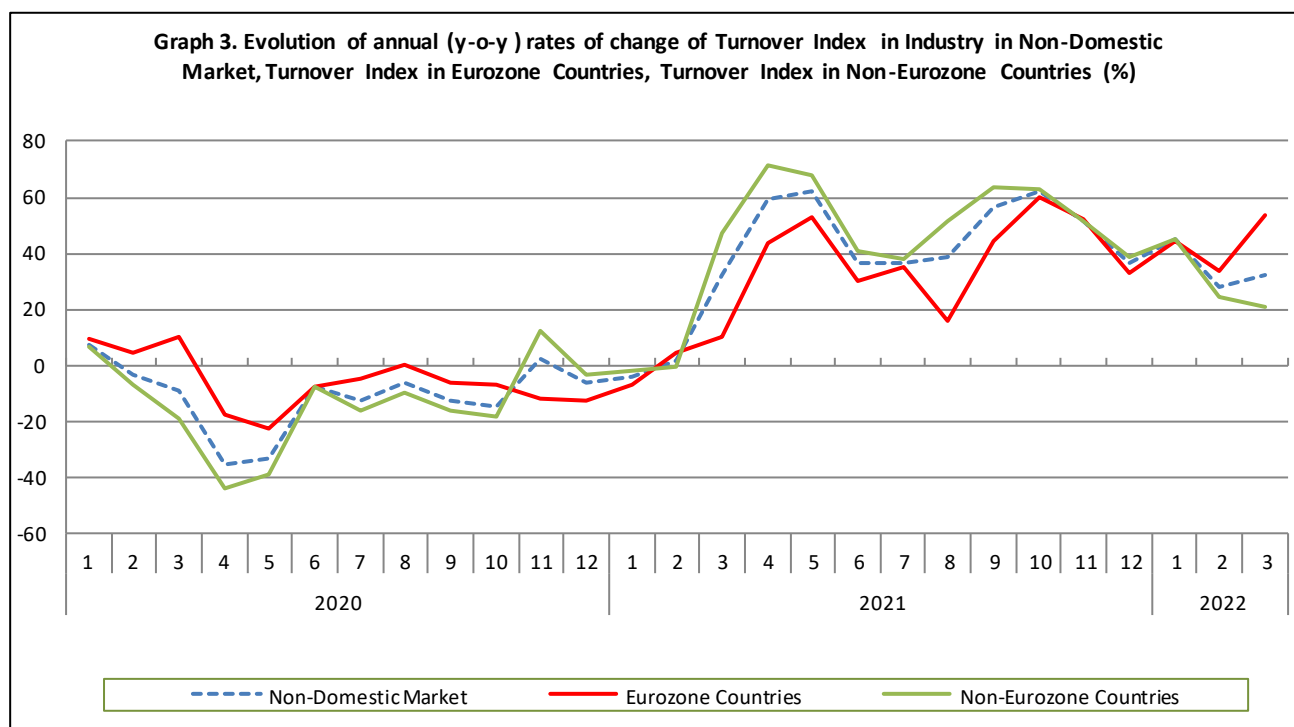
The 32.2% increase of the Turnover Index in Industry in Non-Domestic Market in March 2022, compared with March 2021, was due to the following:

#### 1. Changes in the sub-indices of the industrial sections (Table 3):

- The Turnover Index in Manufacturing increased by 33.2%. The increase was mainly the result of the annual changes of the sub-indices in the following 2-digit divisions: basic metals, electrical equipment, coke and refined petroleum products, food.
- The Turnover Index in Mining and quarrying decreased by 23.9%. The decrease was the result of the annual change of the sub-index in the following 2-digit division: mining of metal ores.

#### 2. Changes in the sub-indices in Eurozone and Non-Eurozone countries:

- The Turnover Index in Industry in Eurozone countries increased by 53.8% (Table 4).
- The Turnover Index in Industry in Non-Eurozone countries increased by 20.9% (Table 5).



### IV. Monthly changes of the Overall Turnover Index in Industry: March 2022/ February 2022

The 23.1% increase of the Overall Turnover Index in Industry in March 2022, compared with the corresponding index in February 2022, was due to the following:

#### 1. Changes in the sub-indices of industrial sections (Table 6):

- The Turnover Index in Manufacturing increased by 23.3%.
- The Turnover Index in Mining and quarrying increased by 3.1%.

#### 2. Changes in the sub-indices in Domestic and Non-Domestic Market:

- The Turnover Index in Industry in Non-Domestic Market increased by 30.1% (Table 8).
- The Turnover Index in Industry in Domestic Market increased by 19.0% (Table 7).

**Table 1. Annual rates of change of the Turnover Index in Industry: Total Market**
**Base year: 2015=100.0**

Code		Division	Weights	March			Rate of change (%)	
				2022*	2021*	2020	2022/2021	2021/2020
OVERALL INDEX				167.17	120.85	102.23	38.3	18.2
B	MINING AND QUARRYING		100.00	100.46	108.96	93.59	-7.8	16.4
05-06-09	Mining of coal and lignite - Extraction of crude petroleum and natural gas - Mining support service activities		21.19	19.17	18.53	21.99	3.4	-15.7
07	Mining of metal ores		17.56	80.99	227.51	188.02	-64.4	21.0
08	Other mining and quarrying products		61.25	134.16	106.25	91.29	26.3	16.4
C	MANUFACTURING		100.00	168.08	121.01	102.35	38.9	18.2
10	Food		23.39	139.25	110.34	110.60	26.2	-0.2
11	Beverages		3.57	115.17	87.54	81.28	31.6	7.7
12	Tobacco products		1.19	165.83	157.78	117.60	5.1	34.2
13	Textiles		1.28	138.86	125.15	101.18	11.0	23.7
14	Wearing apparel		1.80	85.85	55.47	49.24	54.7	12.7
15	Leather and related products		0.34	104.34	61.26	70.00	70.3	-12.5
16	Wood and products of wood and cork, except furniture		0.72	144.58	103.01	98.19	40.4	4.9
17	Paper and paper products		2.44	155.10	113.66	135.78	36.5	-16.3
18	Printing and reproduction of recorded products		1.17	115.53	85.78	93.23	34.7	-8.0
19	Coke and refined petroleum products		28.73	179.68	107.53	72.49	67.1	48.3
20	Chemicals and chemical products		4.43	203.34	155.09	147.67	31.1	5.0
21	Basic pharmaceutical products and pharmaceutical preparations		3.67	232.75	184.00	183.63	26.5	0.2
22	Rubber and plastic products		3.47	170.11	137.25	114.96	23.9	19.4
23	Other non-metallic mineral products		3.31	141.94	120.66	100.38	17.6	20.2
24	Basic metals		7.19	254.55	164.03	127.59	55.2	28.6
25	Fabricated metal products, except machinery and equipment		4.51	137.51	116.24	94.80	18.3	22.6
26	Computers, electronic and optical products		0.78	270.83	194.06	161.58	39.6	20.1
27	Electrical equipment		2.65	228.20	197.10	130.00	15.8	51.6
28	Machinery and equipment n.e.c.		1.56	152.50	126.44	96.01	20.6	31.7
29	Motor vehicles, trailers and semi-trailers		0.23	148.89	103.75	168.83	43.5	-38.6
30	Other transport equipment		0.52	69.83	82.91	61.90	-15.8	34.0
31	Furniture		0.97	150.64	98.21	100.82	53.4	-2.6
32	Other manufacturing		0.66	119.82	91.94	76.31	30.3	20.5
33	Repair and installation of machinery and equipment		1.42	126.31	114.31	97.63	10.5	17.1
MAIN INDUSTRIAL GROUPINGS								
1	Energy		28.57	178.48	106.86	72.14	67.0	48.1
2	Intermediate goods		28.29	191.58	142.43	120.91	34.5	17.8
3	Capital goods		7.00	145.26	122.57	102.40	18.5	19.7
4	Consumer Durables		1.86	139.40	101.37	85.16	37.5	19.0
5	Consumer Non-Durables		34.28	143.59	115.40	112.79	24.4	2.3

\* Provisional data

Note: The indices and the percentage changes are rounded up to two and one decimal digits, respectively, when published.

**Table 2. Annual rates of change of the Turnover Index in Industry: Domestic Market**

Base year: 2015=100.0

Code		Division	Weights	March			Rate of change (%)	
				2022*	2021*	2020	2022/2021	2021/2020
OVERALL INDEX				152.76	107.10	97.20	42.6	10.2
B	MINING AND QUARRYING		100.00	87.83	74.76	65.17	17.5	14.7
05-06-09	Mining of coal and lignite - Extraction of crude petroleum and natural gas - Mining support service activities		31.66	22.67	21.91	25.99	3.4	-15.7
07	Mining of metal ores		12.83	105.52	94.98	101.85	11.1	-6.7
08	Other mining and quarrying products		55.50	120.90	100.23	79.04	20.6	26.8
C	MANUFACTURING		100.00	153.51	107.48	97.57	42.8	10.2
10	Food		28.50	127.99	101.27	103.35	26.4	-2.0
11	Beverages		4.86	106.17	82.46	77.38	28.7	6.6
12	Tobacco products		0.51	231.31	209.43	167.88	10.4	24.8
13	Textiles		1.11	117.03	98.37	73.01	19.0	34.7
14	Wearing apparel		1.77	81.08	46.05	39.12	76.1	17.7
15	Leather and related products		0.41	108.28	55.21	72.34	96.1	-23.7
16	Wood and products of wood and cork, except furniture		0.96	137.12	95.65	92.82	43.4	3.0
17	Paper and paper products		3.12	149.78	108.34	135.66	38.2	-20.1
18	Printing and reproduction of recorded products		1.63	98.70	74.46	74.33	32.6	0.2
19	Coke and refined petroleum products		24.90	156.76	72.97	64.28	114.8	13.5
20	Chemicals and chemical products		4.90	209.72	156.20	154.58	34.3	1.0
21	Basic pharmaceutical products and pharmaceutical preparations		3.85	230.00	176.28	168.07	30.5	4.9
22	Rubber and plastic products		3.31	165.30	134.26	105.61	23.1	27.1
23	Other non-metallic mineral products		3.31	151.41	124.29	103.86	21.8	19.7
24	Basic metals		3.49	306.94	194.45	124.57	57.8	56.1
25	Fabricated metal products, except machinery and equipment		4.25	161.60	134.16	104.83	20.5	28.0
26	Computers, electronic and optical products		0.40	121.30	98.79	95.33	22.8	3.6
27	Electrical equipment		2.24	216.21	218.99	137.47	-1.3	59.3
28	Machinery and equipment n.e.c.		1.46	144.70	132.14	96.03	9.5	37.6
29	Motor vehicles, trailers and semi-trailers		0.27	156.48	108.85	189.52	43.8	-42.6
30	Other transport equipment		0.58	58.12	69.21	48.80	-16.0	41.8
31	Furniture		1.35	142.09	89.25	96.10	59.2	-7.1
32	Other manufacturing		0.88	114.61	85.25	70.08	34.4	21.6
33	Repair and installation of machinery and equipment		1.92	131.31	121.03	103.28	8.5	17.2
MAIN INDUSTRIAL GROUPINGS								
1	Energy		24.89	155.41	72.48	63.96	114.4	13.3
2	Intermediate goods		25.73	188.09	141.49	118.68	32.9	19.2
3	Capital goods		7.19	143.06	125.85	105.30	13.7	19.5
4	Consumer Durables		2.31	125.69	89.75	79.05	40.0	13.5
5	Consumer Non-Durables		39.88	131.63	104.16	103.69	26.4	0.5

\* Provisional data

Note: The indices and the percentage changes are rounded up to two and one decimal digits, respectively, when published.

**Table 3. Annual rates of change of the Turnover Index in Industry: Non-Domestic Market**

Base year: 2015=100.0

Base year: 2015 = 100%							
Code	Division	Weights	March			Rate of change (%)	
			2022*	2021*	2020	2022/2021	2021/2020
OVERALL INDEX			195.57	147.92	112.14	32.2	31.9
B	MINING AND QUARRYING	100.00	116.94	153.60	130.68	-23.9	17.5
05-06-09	Mining of coal and lignite - Extraction of crude petroleum and natural gas - Mining support service activities	7.53	0.00	0.00	0.00	-	-
07	Mining of metal ores	23.74	63.69	321.04	248.83	-80.2	29.0
08	Other mining and quarrying products	68.74	148.14	112.60	104.19	31.6	8.1
C	MANUFACTURING	100.00	196.94	147.82	111.81	33.2	32.2
10	Food	13.27	187.16	148.94	141.46	25.7	5.3
11	Beverages	1.01	201.00	135.92	118.52	47.9	14.7
12	Tobacco products	2.53	139.42	136.96	97.33	1.8	40.7
13	Textiles	1.61	168.81	161.90	139.83	4.3	15.8
14	Wearing apparel	1.86	94.83	73.23	68.30	29.5	7.2
15	Leather and related products	0.19	87.39	87.25	59.93	0.2	45.6
16	Wood and products of wood and cork, except furniture	0.24	203.74	161.42	140.79	26.2	14.7
17	Paper and paper products	1.11	184.67	143.23	136.49	28.9	4.9
18	Printing and reproduction of recorded products	0.26	325.16	226.77	328.68	43.4	-31.0
19	Coke and refined petroleum products	36.32	210.82	154.48	83.65	36.5	84.7
20	Chemicals and chemical products	3.50	185.68	152.02	128.55	22.1	18.3
21	Basic pharmaceutical products and pharmaceutical preparations	3.30	239.09	201.83	219.58	18.5	-8.1
22	Rubber and plastic products	3.79	178.46	142.43	131.17	25.3	8.6
23	Other non-metallic mineral products	3.31	123.17	113.45	93.47	8.6	21.4
24	Basic metals	14.54	229.64	149.56	129.03	53.5	15.9
25	Fabricated metal products, except machinery and equipment	5.03	97.14	86.21	78.01	12.7	10.5
26	Computers, electronic and optical products	1.52	348.63	243.64	196.05	43.1	24.3
27	Electrical equipment	3.44	243.69	168.82	120.36	44.3	40.3
28	Machinery and equipment n.e.c.	1.76	165.32	117.07	95.98	41.2	22.0
29	Motor vehicles, trailers and semi-trailers	0.14	119.34	83.86	88.27	42.3	-5.0
30	Other transport equipment	0.40	103.18	121.95	99.23	-15.4	22.9
31	Furniture	0.21	259.45	212.25	160.93	22.2	31.9
32	Other manufacturing	0.22	160.20	143.82	124.60	11.4	15.4
33	Repair and installation of machinery and equipment	0.43	82.43	55.29	48.03	49.1	15.1
MAIN INDUSTRIAL GROUPINGS							
1	Energy	35.82	210.05	153.92	83.34	36.5	84.7
2	Intermediate goods	33.33	196.88	143.86	124.31	36.9	15.7
3	Capital goods	6.62	149.96	115.57	96.20	29.8	20.1
4	Consumer Durables	0.98	203.25	155.49	113.58	30.7	36.9
5	Consumer Non-Durables	23.25	184.03	153.40	143.53	20.0	6.9

\* Provisional data

Note: The indices and the percentage changes are rounded up to two and one decimal digits, respectively, when published.

**Table 4. Annual rates of change of the Turnover Index in Industry: Eurozone Countries**

Base year: 2015=100.0

Code		Sections and main groupings		Base year: 2015 = 100%		
				March		
		2022*	2021*	2020	Rate of change (%)	
					2022/2021	2021/2020
OVERALL INDEX		226.14	147.07	133.49	53.8	10.2
INDUSTRIAL SECTIONS						
B	MINING AND QUARRYING	127.74	116.49	124.29	9.7	-6.3
C	MANUFACTURING	228.12	147.68	133.67	54.5	10.5
MAIN INDUSTRIAL GROUPINGS						
1	Energy	276.98	121.30	104.56	128.3	16.0
2	Intermediate goods	221.94	147.23	138.75	50.7	6.1
3	Capital goods	159.93	145.09	106.96	10.2	35.6
4	Consumer Durables	331.07	230.57	144.40	43.6	59.7
5	Consumer Non-Durables	201.47	162.25	151.17	24.2	7.3

\* Provisional data

**Table 5. Annual rates of change of the Turnover Index in Industry: Non-Eurozone Countries**

Base year: 2015=100.0

CodeSections and main groupings		March			Rate of change (%)	
		2022*	2021*	2020	2022/2021	2021/2020
OVERALL INDEX		179.31	148.37	100.79	20.9	47.2
INDUSTRIAL SECTIONS						
B	MINING AND QUARRYING	109.85	177.96	134.88	-38.3	31.9
C	MANUFACTURING	180.44	147.90	100.24	22.0	47.5
MAIN INDUSTRIAL GROUPINGS						
1	Energy	190.78	163.31	77.24	16.8	111.4
2	Intermediate goods	180.54	141.66	114.90	27.4	23.3
3	Capital goods	146.58	105.57	92.56	38.9	14.1
4	Consumer Durables	114.98	103.63	92.30	10.9	12.3
5	Consumer Non-Durables	167.06	144.78	136.10	15.4	6.4

\* Provisional data

*Note: The indices and the percentage changes are rounded up to two and one decimal digits, respectively, when published.*

**Table 6. Monthly rate of change of the Turnover Index in Industry: Total Market**

Base year: 2015=100.0

Code	Sections and main groupings	March 2022*	February 2022**	Rate of change (%) Mar. 2022/ Feb. 2022
<b>OVERALL INDEX</b>		<b>167.17</b>	<b>135.76</b>	<b>23.1</b>
<b>INDUSTRIAL SECTIONS</b>				
<b>B</b>	MINING AND QUARRYING	100.46	97.47	3.1
<b>C</b>	MANUFACTURING	168.08	136.28	23.3
<b>MAIN INDUSTRIAL GROUPINGS</b>				
<b>1</b>	Energy	178.48	131.87	35.3
<b>2</b>	Intermediate goods	191.58	163.27	17.3
<b>3</b>	Capital goods	145.26	115.19	26.1
<b>4</b>	Consumer Durables	139.40	109.49	27.3
<b>5</b>	Consumer Non-Durables	143.59	121.93	17.8

**Table 7. Monthly rate of change of the Turnover Index in Industry: Domestic Market**

Base year: 2015=100.0

Code	Sections and main groupings	March 2022*	February 2022**	Rate of change (%) Mar. 2022/ Feb. 2022
<b>OVERALL INDEX</b>		<b>152.76</b>	<b>128.38</b>	<b>19.0</b>
<b>INDUSTRIAL SECTIONS</b>				
<b>B</b>	MINING AND QUARRYING	87.83	74.13	18.5
<b>C</b>	MANUFACTURING	153.51	129.00	19.0
<b>MAIN INDUSTRIAL GROUPINGS</b>				
<b>1</b>	Energy	155.41	130.24	19.3
<b>2</b>	Intermediate goods	188.09	156.73	20.0
<b>3</b>	Capital goods	143.06	115.09	24.3
<b>4</b>	Consumer Durables	125.69	102.26	22.9
<b>5</b>	Consumer Non-Durables	131.63	112.83	16.7

**Table 8. Monthly rate of change of the Turnover Index in Industry: Non-Domestic Market**

Base year: 2015=100.0

Code	Sections and main groupings	March 2022*	February 2022**	Rate of change (%) Mar. 2022/ Feb. 2022
<b>OVERALL INDEX</b>		<b>195.57</b>	<b>150.31</b>	<b>30.1</b>
<b>INDUSTRIAL SECTIONS</b>				
<b>B</b>	MINING AND QUARRYING	116.94	127.93	-8.6
<b>C</b>	MANUFACTURING	196.94	150.71	30.7
<b>MAIN INDUSTRIAL GROUPINGS</b>				
<b>1</b>	Energy	210.05	134.11	56.6
<b>2</b>	Intermediate goods	196.88	173.22	13.7
<b>3</b>	Capital goods	149.96	115.42	29.9
<b>4</b>	Consumer Durables	203.25	143.15	42.0
<b>5</b>	Consumer Non-Durables	184.03	152.68	20.5

\* Provisional data    \*\* Revised data

Note: The indices and the percentage changes are rounded up to two and one decimal digits, respectively, when published.



**Table 9. Monthly rate of change of the Turnover Index in Industry: Eurozone Countries**

Base year: 2015=100.0

Code	Sections and main groupings	March 2022*	February 2022**	Rate of change (%) Mar. 2022/ Feb. 2022
<b>OVERALL INDEX</b>		<b>226.14</b>	<b>172.93</b>	<b>30.8</b>
<b>INDUSTRIAL SECTIONS</b>				
<b>B</b>	MINING AND QUARRYING	127.74	150.94	-15.4
<b>C</b>	MANUFACTURING	228.12	173.37	31.6
<b>MAIN INDUSTRIAL GROUPINGS</b>				
<b>1</b>	Energy	276.98	162.83	70.1
<b>2</b>	Intermediate goods	221.94	188.81	17.5
<b>3</b>	Capital goods	159.93	130.89	22.2
<b>4</b>	Consumer Durables	331.07	211.30	56.7
<b>5</b>	Consumer Non-Durables	201.47	166.57	21.0

\* Provisional data    \*\* Revised data

**Table 10. Monthly rate of change of the Turnover Index in Industry: Non-Eurozone Countries**

Base year: 2015=100.0

Code	Sections and main groupings	March 2022*	February 2022**	Rate of change (%) Mar. 2022/ Feb. 2022
<b>OVERALL INDEX</b>		<b>179.31</b>	<b>138.30</b>	<b>29.7</b>
<b>INDUSTRIAL SECTIONS</b>				
<b>B</b>	MINING AND QUARRYING	109.85	112.82	-2.6
<b>C</b>	MANUFACTURING	180.44	138.71	30.1
<b>MAIN INDUSTRIAL GROUPINGS</b>				
<b>1</b>	Energy	190.78	125.84	51.6
<b>2</b>	Intermediate goods	180.54	163.06	10.7
<b>3</b>	Capital goods	146.58	110.17	33.1
<b>4</b>	Consumer Durables	114.98	96.09	19.7
<b>5</b>	Consumer Non-Durables	167.06	139.18	20.0

\* Provisional data    \*\* Revised data

*Note: The indices and the percentage changes are rounded up to two and one decimal digits, respectively, when published.*

**Table 11. Evolution of the Turnover Index in Industry (y-o-y changes): Total Market**

Base year: 2015=100.0

Year and month		Overall Index (Total Market)		Turnover Index in Industry in Domestic Market		Turnover Index in Industry in Non-Domestic Market	
		Index	Annual rate of change (%)	Index	Annual rate of change (%)	Index	Annual rate of change (%)
2021*:	3	120.85	18.2	107.10	10.2	147.92	31.9
	4	122.10	53.0	111.47	49.1	143.06	59.5
	5	119.67	37.5	106.05	24.4	146.50	61.8
	6	136.73	22.7	128.04	15.5	153.86	36.5
	7	138.96	25.1	128.41	18.7	159.75	36.7
	8	115.61	32.0	111.54	28.6	123.62	38.5
	9	144.61	39.6	131.54	30.3	170.36	56.5
	10	138.81	41.1	125.92	30.0	164.19	61.9
	11	144.87	39.9	132.71	33.2	168.83	51.5
	12	144.91	22.8	133.39	15.2	167.59	37.1
2022*:	1	118.73	36.3	105.70	30.9	144.41	44.9
	2	135.76	34.0	128.38	38.1	150.31	27.7
	3	167.17	38.3	152.76	42.6	195.57	32.2

\*Provisional data

**Table 12. Evolution of the Turnover Index in Industry (y-o-y changes): Non-Domestic Market**

Base year: 2015=100.0

Year and month		Overall Index (Non-Domestic Market)		Turnover Index in Industry in Eurozone Countries		Turnover Index in Industry in Non-Eurozone Countries	
		Index	Annual rate of change (%)	Index	Annual rate of change (%)	Index	Annual rate of change (%)
2021*:	3	147.92	31.9	147.07	10.2	148.37	47.2
	4	143.06	59.5	155.79	43.4	136.29	71.1
	5	146.50	61.8	161.92	52.6	138.30	68.1
	6	153.86	36.5	165.12	29.7	147.88	40.8
	7	159.75	36.7	164.54	35.5	157.20	37.4
	8	123.62	38.5	107.12	16.8	132.38	50.6
	9	170.36	56.5	162.75	44.4	174.41	63.3
	10	164.19	61.9	170.45	60.3	160.86	62.8
	11	168.83	51.5	171.72	51.8	167.29	51.4
	12	167.59	37.1	143.98	33.3	180.14	38.8
2022*:	1	144.41	44.9	156.64	44.4	137.91	45.3
	2	150.31	27.7	172.93	33.7	138.30	24.1
	3	195.57	32.2	226.14	53.8	179.31	20.9

\*Provisional data

Note: The indices and the percentage changes are rounded up to two and one decimal digits, respectively, when published.

**Table 13. Average indices and rates of change (%) of the 12-month periods of Turnover Index in Industry: Total Market**  
**Base year: 2015=100.0**

Code		Division	Average Indices of 12-month periods			Rate of change (%)	
			Apr. 2021*- Mar. 2022*	Apr. 2020- Mar. 2021*	Apr. 2019- Mar. 2020	2022/2021	2021/2020
OVERALL INDEX			135.66	100.81	113.60	34.6	-11.3
B	MINING AND QUARRYING		104.17	99.57	107.73	4.6	-7.6
05-06-09	Mining of coal and lignite - Extraction of crude petroleum and natural gas - Mining support service activities		28.01	25.58	78.00	9.5	-67.2
07	Mining of metal ores		162.58	187.01	167.45	-13.1	11.7
08	Other mining and quarrying products		113.78	100.10	100.89	13.7	-0.8
C	MANUFACTURING		136.09	100.83	113.68	35.0	-11.3
10	Food		118.45	102.59	105.97	15.5	-3.2
11	Beverages		120.25	96.51	115.55	24.6	-16.5
12	Tobacco products		147.17	136.66	129.39	7.7	5.6
13	Textiles		123.77	99.62	106.87	24.2	-6.8
14	Wearing apparel		89.52	61.01	90.16	46.7	-32.3
15	Leather and related products		77.39	46.65	84.75	65.9	-44.9
16	Wood and products of wood and cork, except furniture		124.74	100.04	109.31	24.7	-8.5
17	Paper and paper products		125.90	110.16	117.47	14.3	-6.2
18	Printing and reproduction of recorded products		102.83	87.18	96.06	18.0	-9.2
19	Coke and refined petroleum products		135.16	77.12	115.74	75.3	-33.4
20	Chemicals and chemical products		150.79	121.00	119.50	24.6	1.3
21	Basic pharmaceutical products and pharmaceutical preparations		191.97	170.11	147.85	12.9	15.1
22	Rubber and plastic products		141.00	112.15	107.99	25.7	3.9
23	Other non-metallic mineral products		127.47	103.51	110.77	23.1	-6.6
24	Basic metals		183.93	124.51	124.64	47.7	-0.1
25	Fabricated metal products, except machinery and equipment		128.21	100.18	100.63	28.0	-0.4
26	Computers, electronic and optical products		198.71	160.59	169.83	23.7	-5.4
27	Electrical equipment		196.81	142.36	130.70	38.2	8.9
28	Machinery and equipment n.e.c.		129.08	107.43	109.35	20.2	-1.8
29	Motor vehicles, trailers and semi-trailers		142.08	103.00	118.64	37.9	-13.2
30	Other transport equipment		72.44	69.17	60.70	4.7	14.0
31	Furniture		131.99	101.93	115.50	29.5	-11.7
32	Other manufacturing		117.51	87.29	104.29	34.6	-16.3
33	Repair and installation of machinery and equipment		105.31	98.01	98.58	7.5	-0.6
MAIN INDUSTRIAL GROUPINGS							
1	Energy		134.39	76.77	115.56	75.0	-33.6
2	Intermediate goods		151.82	115.28	115.65	31.7	-0.3
3	Capital goods		127.20	104.94	106.40	21.2	-1.4
4	Consumer Durables		124.95	97.99	107.40	27.5	-8.8
5	Consumer Non-Durables		125.70	108.22	112.08	16.2	-3.4

\*Provisional data

*Note: The indices and the percentage changes are rounded up to two and one decimal digits, respectively, when published.*

## METHODOLOGICAL NOTES

<b>Generally</b>	The Industrial Turnover Index is an indicator of an enterprise's business cycle showing the monthly evolution of the market of goods and services in industry. The first compilation of the Turnover Index was completed by the Hellenic Statistical Authority in 2006, with base year 2000=100.0 and is compiled from 2000 onwards.
<b>Purpose of the index</b>	The purpose of this index is to measure the monthly activity of the industrial sector in terms of value. Turnover comprises the totals invoiced by the observation units during the reference period and corresponds to the market sales of goods or services supplied to third parties. The purposes and the characteristics of the Turnover Index apply, as well, to the indices for the distinction between domestic and non-domestic turnover.
<b>Legal Framework</b>	The compilation and publication of the Turnover Index is based on the framework of the implementation of Council Regulation (EC) No 1165/1998 concerning short-term statistics (STS-R), as well as Regulation (EC) No 1158/2005 of the European Parliament and of the Council amending Council Regulation (EC) No 1165/1998. Furthermore, this index is governed by Regulation (EC) No 1893/2006 of the European Parliament and of the Council, by Commission Regulation (EC) No 656/2007, by Regulation (EC) No 451/2008 of the Council, by Regulation (EU) No 2019/2152 of the European Parliament and of the Council on European business statistics, as well as Commission Implementing Regulation (EU) No 2020/1197 laying down technical specifications and arrangements pursuant to Regulation (EU) No 2019/2152.
<b>Reference period</b>	Month.
<b>Base year</b>	2015=100.0.
<b>Revision</b>	The latest revision of the Turnover Index in Industry (base year 2015=100.0) took place in the framework of Council Regulation (EC) No 1165/1998 concerning short-term statistics. In accordance with this regulation the index is revised every five years, in years ending in 0 or 5.
<b>Statistical classifications</b>	At the level of classes of economic activities, the statistical classification of economic activities NACE Rev. 2 of EU was used (Regulation No 1893/2006), while at the level of main industrial groupings, the allocation of two-digit and three-digit NACE Rev. 2 headings to categories of aggregate classification was used, in accordance with Commission Regulation No 656/2007.
<b>Geographical coverage</b>	The index covers the whole Country.
<b>Coverage of economic activities</b>	The Turnover Index in Industry is compiled for all activities listed in Sections B (mining and quarrying) and C (manufacturing) of the NACE Rev. 2 statistical classification.
<b>Computation of the Index</b>	The Turnover Index in Industry is a fixed base index. This index is calculated at a first stage at the four-digit level of economic activity and subsequently, with the implementation of appropriate weighting coefficients, the index is calculated at higher levels (three-level and two-level of economic activity) as well as at the level of Main Industrial Groupings (MIGs).
<b>Publication of data</b>	The Turnover Index in Industry (2015=100.0) is released since August 2019 with June 2019 as first reference month. Data with base year 2015=100.0 are available from January 2000 onwards.
<b>References</b>	More information about the methodology concerning the compilation and calculation of the index and for the time series is available on the website of the Hellenic Statistical Authority (ELSTAT) ( <a href="http://www.statistics.gr/en/statistics/-/publication/DKT24/">http://www.statistics.gr/en/statistics/-/publication/DKT24/</a> ).