



PRESS RELEASE

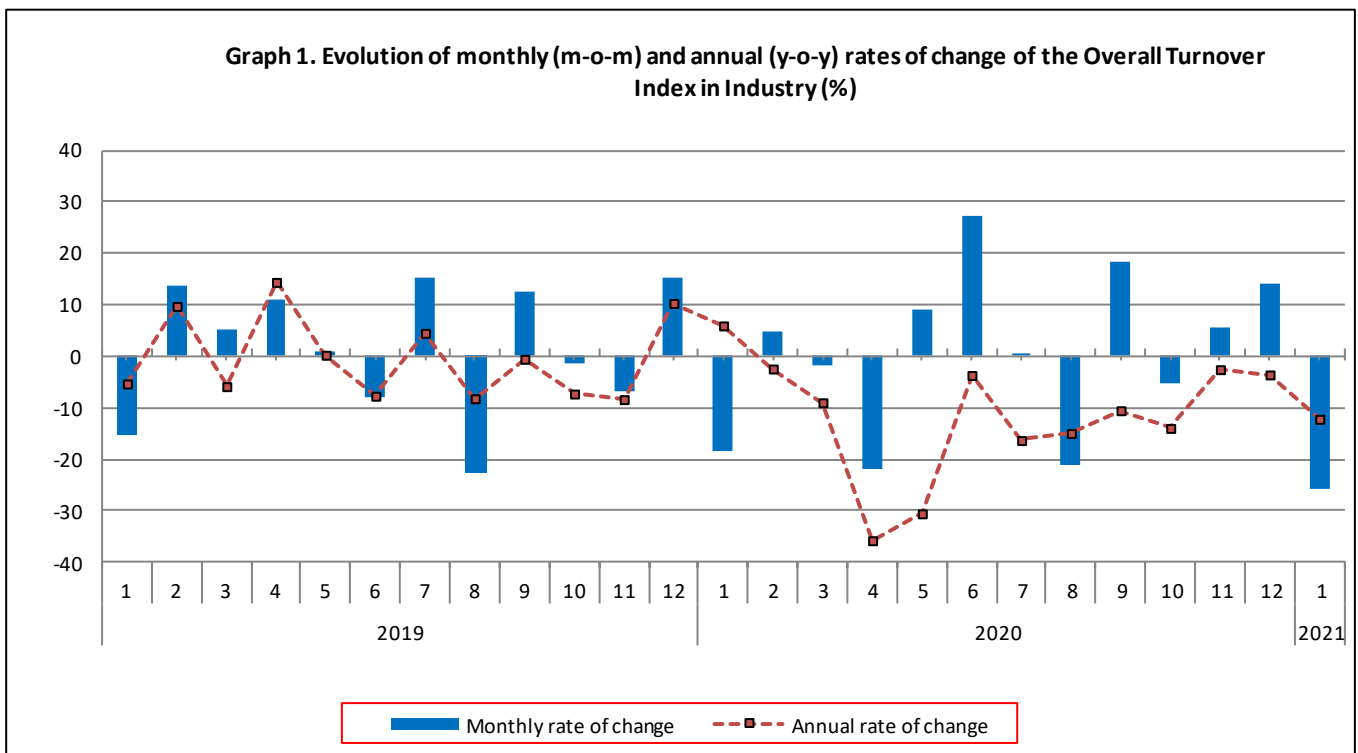
TURNOVER INDEX IN INDUSTRY: January 2021, y-o-y decrease of 12.2%

The Hellenic Statistical Authority announces the Turnover Index in Industry with base year 2015=100.0 for January 2021, on the basis of provisional data, which is as follows:

The Overall Turnover Index in Industry (both domestic and non-domestic market) in January 2021 recorded a decrease of 12.2% compared with the corresponding index of January 2020. The Overall Turnover Index in Industry in January 2020 increased by 6.0% compared with the corresponding index in January 2019 (Table 1).

The Overall Turnover Index in Industry in January 2021, compared with December 2020, recorded a decrease of 25.8% (Table 6).

The average Overall Turnover Index in Industry for the 12-month period from February 2020 to January 2021 decreased by 13.4%, compared with the corresponding index of the 12-month period from February 2019 to January 2020. The average Overall Turnover Index in Industry for the 12-month period from February 2019 to January 2020 increased by 0.2 compared with the corresponding index of the 12-month period from February 2018 to January 2019 (Table 13).



Information for methodological issues:

Division of Business Statistics
Section of Manufacture-Construction Indices and Industrial Products
Head of the Section : Diamantaki Aikaterini
Tel: +30 213 135 2056
E-mail: a.diamantaki@statistics.gr

Information for data provision:

Tel: +30 213 135 2022, 2308, 2310
E-mail: data.dissem@statistics.gr

Evolution of the Overall Turnover Index in Industry in January 2021

I. Annual changes of the Overall Turnover Index in Industry: January 2021/January 2020

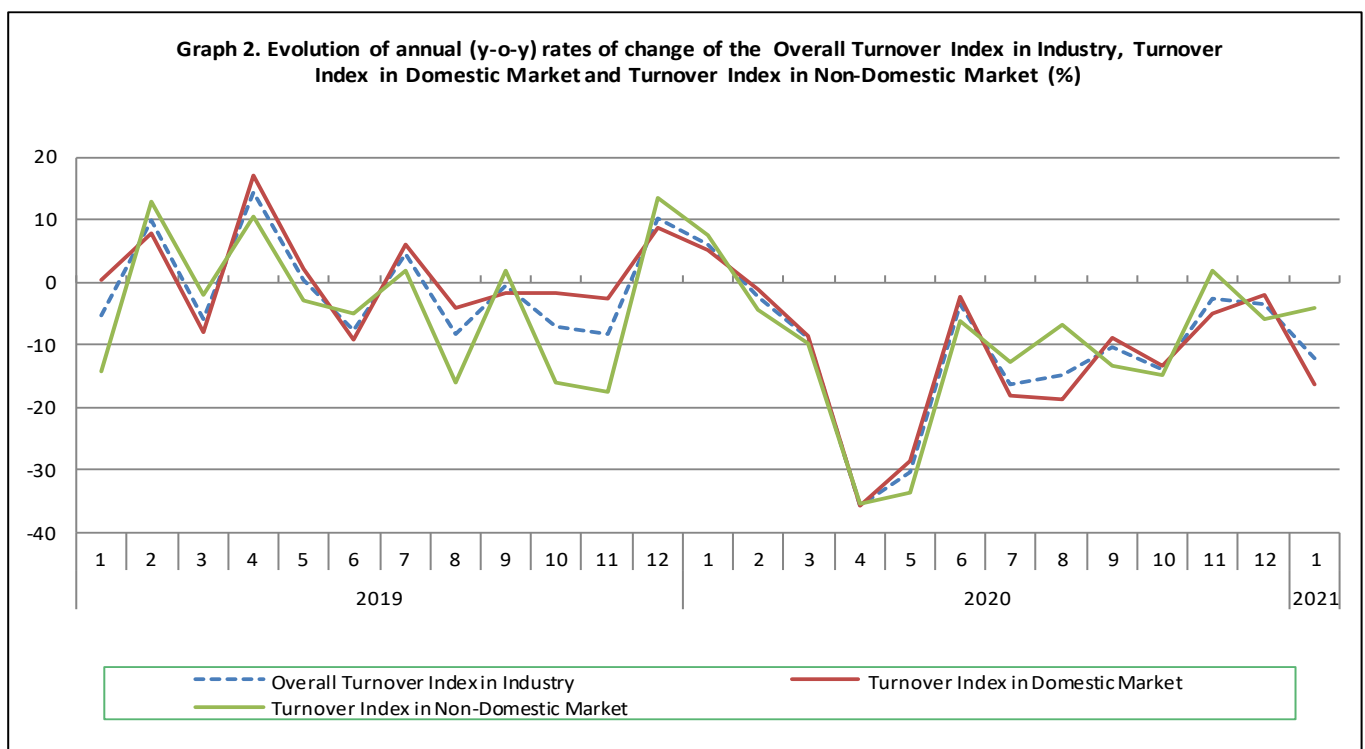
The 12.2% decrease in the Overall Turnover Index in Industry in January 2021, compared with the corresponding index in January 2020, was due to the following:

1. Changes in the sub-indices of the industrial sections (Table 1):

- The Turnover Index in Manufacturing decreased by 12.5%. The decrease was mainly the result of the annual changes of the sub-indices in the following 2-digit divisions: leather and related products, coke and refined petroleum products, wearing apparel.
- The Turnover Index in Mining and quarrying increased by 21.0%. The increase was mainly the result of the annual change of the sub-index in the following 2-digit division: mining of metal ores.

2. Changes in the sub-indices in domestic and non-domestic markets:

- The Turnover Index in Industry in domestic market decreased by 16.5% (Table 2).
- The Turnover Index in Industry in non-domestic market decreased by 4.2% (Table 3).



II. Annual changes of the Turnover Index in Industry in Domestic Market: January 2021/January 2020

The 16.5% decrease of the Turnover Index in Industry in domestic market in January 2021, compared with January 2020, is due to the following annual changes in the sub-indices of the following industrial sections (Table 2):

- The Turnover Index in Manufacturing decreased by 16.6%. The decrease was mainly the result of the annual changes of the sub-indices in the following 2-digit divisions: coke and refined petroleum products, leather and related products, wearing apparel, paper and paper products.
- The Turnover Index in Mining and quarrying decreased by 8.3%. The decrease was mainly the result of the annual changes of the sub-indices in the following 2-digit divisions: mining of coal and lignite - extraction of crude petroleum and natural gas - mining support service activities, other mining and quarrying products.

III. Annual changes of the Turnover Index in Industry in Non-Domestic Market: January 2021/January 2020

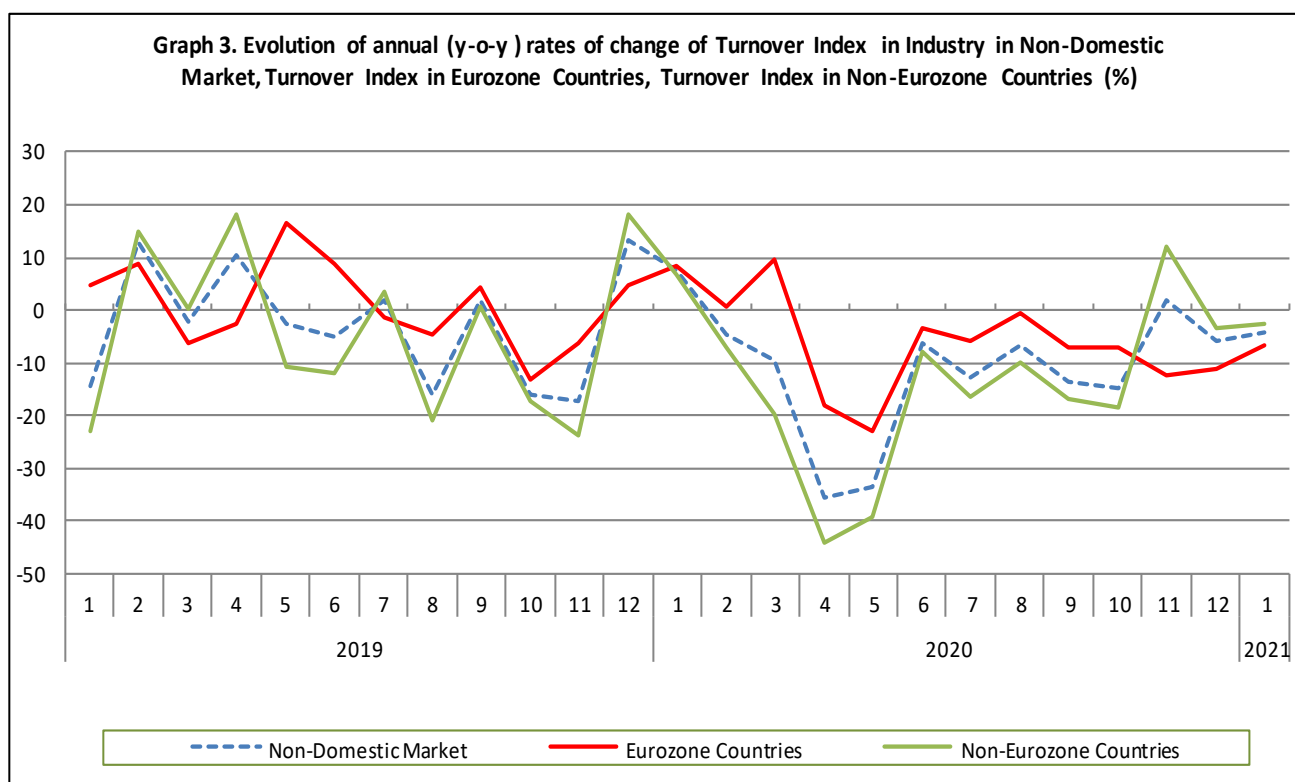
The 4.2% decrease of the Turnover Index in Industry in Non-Domestic market in January 2021, compared with January 2020, was due to the following:

1. Changes in the sub-indices of the industrial sections (Table 3):

- The Turnover Index in Manufacturing decreased by 5.0%. The decrease was mainly the result of the annual changes of the sub-indices in the following 2-digit divisions: leather and related products, coke and refined petroleum products, fabricated metal products, except machinery and equipment, wearing apparel.
- The Turnover Index in Mining and quarrying increased by 48.2%. The increase was mainly the result of the annual changes of the sub-indices in the following 2-digit divisions: mining of metal ores, other mining and quarrying products.

2. Changes in the sub-indices in Eurozone and Non-Eurozone countries:

- The Turnover Index in Industry in Eurozone countries decreased by 6.9% (Table 4).
- The Turnover Index in Industry in non-Eurozone countries decreased by 2.6% (Table 5).



IV. Monthly changes of the Overall Turnover Index in Industry: January 2021/ December 2020

The 25.8% decrease of the Overall Turnover Index in Industry in January 2021, compared with the corresponding index in December 2020, was due to the following:

1. Changes in the sub-indices of industrial sections (Table 6):

- The Turnover Index in Mining and quarrying decreased by 27.4%.
- The Turnover Index in Manufacturing decreased by 25.8%.

2. Changes in the sub-indices in domestic and non-domestic market:

- The Turnover Index in Industry in domestic market decreased by 29.7% (Table 7).
- The Turnover Index in Industry in non-domestic market decreased by 18.6% (Table 8).

Table 1. Annual rates of change of the Turnover Index in Industry: Total Market
Base year: 2015=100.0

Code	Division	Weights	January			Rate of change (%)	
			2021*	2020*	2019	2021/2020	2020/2019
OVERALL INDEX			87.21	99.30	93.71	-12.2	6.0
B	MINING AND QUARRYING	100.00	84.22	69.63	51.52	21.0	35.2
05-06-09	Mining of coal and lignite - Extraction of crude petroleum and natural gas - Mining support service activities	21.19	11.93	20.32	20.25	-41.3	0.3
07	Mining of metal ores	17.56	196.21	106.56	38.47	84.1	177.0
08	Other mining and quarrying products	61.25	77.11	76.10	66.08	1.3	15.2
C MANUFACTURING			87.25	99.70	94.28	-12.5	5.8
10	Food	23.39	97.12	99.92	95.53	-2.8	4.6
11	Beverages	3.57	62.57	69.13	64.30	-9.5	7.5
12	Tobacco products	1.19	141.67	116.80	119.70	21.3	-2.4
13	Textiles	1.28	92.71	87.34	87.10	6.1	0.3
14	Wearing apparel	1.80	62.44	85.38	86.53	-26.9	-1.3
15	Leather and related products	0.34	28.35	59.28	55.76	-52.2	6.3
16	Wood and products of wood and cork, except furniture	0.72	77.86	90.52	76.91	-14.0	17.7
17	Paper and paper products	2.44	104.51	116.12	114.64	-10.0	1.3
18	Printing and reproduction of recorded products	1.17	75.77	85.88	85.65	-11.8	0.3
19	Coke and refined petroleum products	28.73	60.83	104.78	97.16	-41.9	7.8
20	Chemicals and chemical products	4.43	104.28	95.50	88.92	9.2	7.4
21	Basic pharmaceutical products and pharmaceutical preparations	3.67	141.70	126.68	125.71	11.9	0.8
22	Rubber and plastic products	3.47	97.06	92.81	91.57	4.6	1.4
23	Other non-metallic mineral products	3.31	80.01	84.86	74.73	-5.7	13.6
24	Basic metals	7.19	133.06	122.71	124.00	8.4	-1.0
25	Fabricated metal products, except machinery and equipment	4.51	79.64	78.39	74.67	1.6	5.0
26	Computers, electronic and optical products	0.78	147.79	138.18	114.86	7.0	20.3
27	Electrical equipment	2.65	112.64	103.75	84.54	8.6	22.7
28	Machinery and equipment n.e.c.	1.56	76.51	80.26	74.16	-4.7	8.2
29	Motor vehicles, trailers and semi-trailers	0.23	48.80	50.88	54.00	-4.1	-5.8
30	Other transport equipment	0.52	42.96	38.73	24.95	10.9	55.2
31	Furniture	0.97	64.51	76.44	65.18	-15.6	17.3
32	Other manufacturing	0.66	76.93	83.03	79.10	-7.3	5.0
33	Repair and installation of machinery and equipment	1.42	66.34	75.12	63.06	-11.7	19.1
MAIN INDUSTRIAL GROUPINGS							
1	Energy	28.57	60.48	104.17	96.61	-41.9	7.8
2	Intermediate goods	28.29	105.69	101.12	96.10	4.5	5.2
3	Capital goods	7.00	77.62	79.61	69.80	-2.5	14.1
4	Consumer Durables	1.86	68.31	78.19	70.20	-12.6	11.4
5	Consumer Non-Durables	34.28	97.24	98.91	95.48	-1.7	3.6

* Provisional data

Note: The indices and the percentage changes are rounded up to two and one decimal digits, respectively, when published.

Table 2. Annual rates of change of the Turnover Index in Industry: Domestic Market

Base year: 2015=100.0

Code	Division	Weights	January			Rate of change (%)	
			2021*	2020*	2019	2021/2020	2020/2019
OVERALL INDEX			80.92	96.91	92.16	-16.5	5.2
B	MINING AND QUARRYING	100.00	54.47	59.37	52.42	-8.3	13.3
05-06-09	Mining of coal and lignite - Extraction of crude petroleum and natural gas - Mining support service activities	31.66	14.10	24.02	23.94	-41.3	0.3
07	Mining of metal ores	12.83	88.55	82.02	63.64	8.0	28.9
08	Other mining and quarrying products	55.50	69.62	74.31	66.07	-6.3	12.5
C	MANUFACTURING	100.00	81.23	97.34	92.61	-16.6	5.1
10	Food	28.50	93.68	95.63	94.46	-2.0	1.2
11	Beverages	4.86	60.23	67.67	63.15	-11.0	7.2
12	Tobacco products	0.51	181.57	148.99	139.88	21.9	6.5
13	Textiles	1.11	64.40	69.05	66.53	-6.7	3.8
14	Wearing apparel	1.77	54.20	82.88	79.22	-34.6	4.6
15	Leather and related products	0.41	26.38	43.30	43.39	-39.1	-0.2
16	Wood and products of wood and cork, except furniture	0.96	73.09	88.82	72.13	-17.7	23.1
17	Paper and paper products	3.12	101.77	115.65	116.59	-12.0	-0.8
18	Printing and reproduction of recorded products	1.63	61.79	72.69	81.02	-15.0	-10.3
19	Coke and refined petroleum products	24.90	47.08	111.76	103.07	-57.9	8.4
20	Chemicals and chemical products	4.90	106.53	92.25	90.09	15.5	2.4
21	Basic pharmaceutical products and pharmaceutical preparations	3.85	135.67	119.83	113.44	13.2	5.6
22	Rubber and plastic products	3.31	91.63	89.00	88.10	3.0	1.0
23	Other non-metallic mineral products	3.31	81.82	86.16	74.29	-5.0	16.0
24	Basic metals	3.49	149.29	129.39	129.76	15.4	-0.3
25	Fabricated metal products, except machinery and equipment	4.25	87.49	78.92	80.00	10.9	-1.3
26	Computers, electronic and optical products	0.40	93.50	85.80	75.64	9.0	13.4
27	Electrical equipment	2.24	111.60	103.53	84.34	7.8	22.8
28	Machinery and equipment n.e.c.	1.46	80.36	84.96	70.32	-5.4	20.8
29	Motor vehicles, trailers and semi-trailers	0.27	38.64	40.93	42.40	-5.6	-3.5
30	Other transport equipment	0.58	40.19	33.41	21.02	20.3	58.9
31	Furniture	1.35	58.82	68.10	61.72	-13.6	10.3
32	Other manufacturing	0.88	72.74	79.23	75.10	-8.2	5.5
33	Repair and installation of machinery and equipment	1.92	69.55	78.46	63.91	-11.4	22.8
MAIN INDUSTRIAL GROUPINGS							
1	Energy	24.89	46.78	110.91	102.31	-57.8	8.4
2	Intermediate goods	25.73	101.57	96.56	92.76	5.2	4.1
3	Capital goods	7.19	77.14	76.70	68.52	0.6	11.9
4	Consumer Durables	2.31	61.51	72.66	66.38	-15.4	9.5
5	Consumer Non-Durables	39.88	90.71	93.44	91.18	-2.9	2.5

* Provisional data

Note: The indices and the percentage changes are rounded up to two and one decimal digits, respectively, when published.

Table 3. Annual rates of change of the Turnover Index in Industry: Non-Domestic Market

Base year: 2015=100.0

Code	Division	Weights	January			Rate of change (%)	
			2021*	2020*	2019	2021/2020	2020/2019
OVERALL INDEX			99.61	104.02	96.77	-4.2	7.5
B	MINING AND QUARRYING	100.00	123.04	83.01	50.34	48.2	64.9
05-06-09	Mining of coal and lignite - Extraction of crude petroleum and natural gas - Mining support service activities	7.53	0.00	0.00	0.00	-	-
07	Mining of metal ores	23.74	272.18	123.87	20.72	119.7	497.8
08	Other mining and quarrying products	68.74	85.01	77.98	66.08	9.0	18.0
C MANUFACTURING		100.00	99.20	104.39	97.58	-5.0	7.0
10	Food	13.27	111.76	118.21	100.09	-5.5	18.1
11	Beverages	1.01	84.96	83.08	75.26	2.3	10.4
12	Tobacco products	2.53	125.58	103.83	111.56	21.0	-6.9
13	Textiles	1.61	131.56	112.45	115.33	17.0	-2.5
14	Wearing apparel	1.86	77.98	90.10	100.29	-13.5	-10.2
15	Leather and related products	0.19	36.78	127.96	108.94	-71.3	17.5
16	Wood and products of wood and cork, except furniture	0.24	115.71	104.07	114.86	11.2	-9.4
17	Paper and paper products	1.11	119.74	118.72	103.82	0.9	14.4
18	Printing and reproduction of recorded products	0.26	249.92	250.27	143.32	-0.1	74.6
19	Coke and refined petroleum products	36.32	79.50	95.30	89.14	-16.6	6.9
20	Chemicals and chemical products	3.50	98.04	104.50	85.70	-6.2	21.9
21	Basic pharmaceutical products and pharmaceutical preparations	3.30	155.62	142.49	154.04	9.2	-7.5
22	Rubber and plastic products	3.79	106.46	99.41	97.57	7.1	1.9
23	Other non-metallic mineral products	3.31	76.42	82.28	75.59	-7.1	8.8
24	Basic metals	14.54	125.35	119.54	121.27	4.9	-1.4
25	Fabricated metal products, except machinery and equipment	5.03	66.48	77.50	65.75	-14.2	17.9
26	Computers, electronic and optical products	1.52	176.04	165.44	135.27	6.4	22.3
27	Electrical equipment	3.44	113.98	104.03	84.80	9.6	22.7
28	Machinery and equipment n.e.c.	1.76	70.18	72.54	80.46	-3.3	-9.8
29	Motor vehicles, trailers and semi-trailers	0.14	88.37	89.60	99.20	-1.4	-9.7
30	Other transport equipment	0.40	50.88	53.87	36.16	-5.6	49.0
31	Furniture	0.21	136.94	182.69	109.25	-25.0	67.2
32	Other manufacturing	0.22	109.34	112.45	110.09	-2.8	2.1
33	Repair and installation of machinery and equipment	0.43	38.11	45.78	55.61	-16.7	-17.7
MAIN INDUSTRIAL GROUPINGS							
1	Energy	35.82	79.22	94.96	88.82	-16.6	6.9
2	Intermediate goods	33.33	111.94	108.06	101.17	3.6	6.8
3	Capital goods	6.62	78.65	85.84	72.54	-8.4	18.3
4	Consumer Durables	0.98	99.95	103.91	88.01	-3.8	18.1
5	Consumer Non-Durables	23.25	119.31	117.40	110.00	1.6	6.7

* Provisional data

Note: The indices and the percentage changes are rounded up to two and one decimal digits, respectively, when published.

Table 4. Annual rates of change of the Turnover Index in Industry: Eurozone Countries

Base year: 2015=100.0

Code	Sections and main groupings	January			Rate of change (%)	
		2021*	2020*	2019	2021/2020	2020/2019
OVERALL INDEX		108.06	116.04	107.01	-6.9	8.4
INDUSTRIAL SECTIONS						
B	MINING AND QUARRYING	140.88	62.77	62.45	124.4	0.5
C	MANUFACTURING	107.40	117.11	107.90	-8.3	8.5
MAIN INDUSTRIAL GROUPINGS						
1	Energy	54.33	87.28	89.26	-37.8	-2.2
2	Intermediate goods	124.39	129.25	113.94	-3.8	13.4
3	Capital goods	107.83	115.95	97.87	-7.0	18.5
4	Consumer Durables	131.98	193.16	149.05	-31.7	29.6
5	Consumer Non-Durables	126.07	118.31	111.33	6.6	6.3

* Provisional data

Table 5. Annual rates of change of the Turnover Index in Industry: Non-Eurozone Countries

Base year: 2015=100.0

Code	Sections and main groupings	January			Rate of change (%)	
		2021*	2020*	2019	2021/2020	2020/2019
OVERALL INDEX		95.12	97.64	91.33	-2.6	6.9
INDUSTRIAL SECTIONS						
B	MINING AND QUARRYING	111.33	96.29	42.39	15.6	127.1
C	MANUFACTURING	94.85	97.66	92.12	-2.9	6.0
MAIN INDUSTRIAL GROUPINGS						
1	Energy	86.39	97.17	88.69	-11.1	9.6
2	Intermediate goods	103.83	94.24	92.84	10.2	1.5
3	Capital goods	68.76	75.64	63.95	-9.1	18.3
4	Consumer Durables	77.83	42.28	45.86	84.1	-7.8
5	Consumer Non-Durables	112.73	116.51	108.71	-3.2	7.2

* Provisional data

Note: The indices and the percentage changes are rounded up to two and one decimal digits, respectively, when published.

Table 6. Monthly rate of change of the Turnover Index in Industry: Total Market

Base year: 2015=100.0

Code	Sections and main groupings	January 2021*	December 2020**	Rate of change (%) Jan. 2021/ Dec. 2020
OVERALL INDEX		87.21	117.60	-25.8
INDUSTRIAL SECTIONS				
B	MINING AND QUARRYING	84.22	116.08	-27.4
C	MANUFACTURING	87.25	117.62	-25.8
MAIN INDUSTRIAL GROUPINGS				
1	Energy	60.48	131.58	-54.0
2	Intermediate goods	105.69	115.61	-8.6
3	Capital goods	77.62	145.71	-46.7
4	Consumer Durables	68.31	107.40	-36.4
5	Consumer Non-Durables	97.24	102.41	-5.0

Table 7. Monthly rate of change of the Turnover Index in Industry: Domestic Market

Base year: 2015=100.0

Code	Sections and main groupings	January 2021*	December 2020**	Rate of change (%) Jan. 2021/ Dec. 2020
OVERALL INDEX		80.92	115.14	-29.7
INDUSTRIAL SECTIONS				
B	MINING AND QUARRYING	54.47	90.93	-40.1
C	MANUFACTURING	81.23	115.42	-29.6
MAIN INDUSTRIAL GROUPINGS				
1	Energy	46.78	135.01	-65.4
2	Intermediate goods	101.57	119.68	-15.1
3	Capital goods	77.14	159.59	-51.7
4	Consumer Durables	61.51	101.84	-39.6
5	Consumer Non-Durables	90.71	92.57	-2.0

Table 8. Monthly rate of change of the Turnover Index in Industry: Non-Domestic Market

Base year: 2015=100.0

Code	Sections and main groupings	January 2021*	December 2020**	Rate of change (%) Jan. 2021/ Dec. 2020
OVERALL INDEX		99.61	122.44	-18.6
INDUSTRIAL SECTIONS				
B	MINING AND QUARRYING	123.04	148.90	-17.4
C	MANUFACTURING	99.20	121.98	-18.7
MAIN INDUSTRIAL GROUPINGS				
1	Energy	79.22	126.89	-37.6
2	Intermediate goods	111.94	109.42	2.3
3	Capital goods	78.65	116.02	-32.2
4	Consumer Durables	99.95	133.29	-25.0
5	Consumer Non-Durables	119.31	135.64	-12.0

* Provisional data ** Revised data

Note: The indices and the percentage changes are rounded up to two and one decimal digits, respectively, when published.

Table 9. Monthly rate of change of the Turnover Index in Industry: Eurozone Countries

Base year: 2015=100.0

Code	Sections and main groupings	January 2021*	December 2020**	Rate of change (%) Jan. 2021/ Dec. 2020
OVERALL INDEX		108.06	109.22	-1.1
INDUSTRIAL SECTIONS				
B	MINING AND QUARRYING	140.88	212.76	-33.8
C	MANUFACTURING	107.40	107.15	0.2
MAIN INDUSTRIAL GROUPINGS				
1	Energy	54.33	79.93	-32.0
2	Intermediate goods	124.39	102.89	20.9
3	Capital goods	107.83	134.90	-20.1
4	Consumer Durables	131.98	182.58	-27.7
5	Consumer Non-Durables	126.07	130.64	-3.5

* Provisional data ** Revised data

Table 10. Monthly rate of change of the Turnover Index in Industry: Non-Eurozone Countries

Base year: 2015=100.0

Code	Sections and main groupings	January 2021*	December 2020**	Rate of change (%) Jan. 2021/ Dec. 2020
OVERALL INDEX		95.12	129.47	-26.5
INDUSTRIAL SECTIONS				
B	MINING AND QUARRYING	111.33	106.98	4.1
C	MANUFACTURING	94.85	129.83	-26.9
MAIN INDUSTRIAL GROUPINGS				
1	Energy	86.39	140.42	-38.5
2	Intermediate goods	103.83	113.67	-8.7
3	Capital goods	68.76	109.61	-37.3
4	Consumer Durables	77.83	99.25	-21.6
5	Consumer Non-Durables	112.73	140.50	-19.8

* Provisional data ** Revised data

Note: The indices and the percentage changes are rounded up to two and one decimal digits, respectively, when published.

Table 11. Evolution of the Turnover Index in Industry (y-o-y changes): Total Market

Base year: 2015=100.0

Year and month	Overall Index (Total Market)		Turnover Index in Industry in Domestic Market		Turnover Index in Industry in Non-Domestic Market	
	Index	Annual rate of change (%)	Index	Annual rate of change (%)	Index	Annual rate of change (%)
2020*: 1	99.30	6.0	96.91	5.2	104.02	7.5
2	103.89	-2.4	98.25	-1.1	114.98	-4.5
3	102.05	-9.0	97.12	-8.5	111.77	-9.8
4	79.79	-35.8	74.75	-35.9	89.71	-35.6
5	87.00	-30.6	85.16	-28.7	90.61	-33.7
6	110.84	-3.7	108.89	-2.2	114.68	-6.3
7	110.88	-16.3	107.87	-18.1	116.81	-12.9
8	87.40	-14.9	86.49	-18.7	89.19	-6.8
9	103.35	-10.5	100.76	-8.8	108.47	-13.5
10	97.97	-14.0	96.37	-13.4	101.13	-14.9
11	103.26	-2.5	99.20	-4.9	111.24	1.9
12	117.60	-3.6	115.14	-2.1	122.44	-6.1
2021*: 1	87.21	-12.2	80.92	-16.5	99.61	-4.2

*Provisional data

Table 12. Evolution of the Turnover Index in Industry (y-o-y changes): Non-Domestic Market

Base year: 2015=100.0

Year and month	Overall Index (Non-Domestic Market)		Turnover Index in Industry in Eurozone Countries		Turnover Index in Industry in Non-Eurozone Countries	
	Index	Annual rate of change (%)	Index	Annual rate of change (%)	Index	Annual rate of change (%)
2020*: 1	104.02	7.5	116.04	8.4	97.64	6.9
2	114.98	-4.5	119.60	0.8	112.53	-7.3
3	111.77	-9.8	132.72	9.5	100.63	-19.7
4	89.71	-35.6	107.86	-18.2	80.06	-44.1
5	90.61	-33.7	106.04	-23.2	82.41	-39.3
6	114.68	-6.3	132.86	-3.7	105.02	-7.9
7	116.81	-12.9	120.84	-5.7	114.67	-16.5
8	89.19	-6.8	91.33	-0.4	88.05	-9.9
9	108.47	-13.5	112.26	-7.1	106.46	-16.7
10	101.13	-14.9	105.89	-7.3	98.59	-18.7
11	111.24	1.9	112.53	-12.7	110.55	12.1
12	122.44	-6.1	109.22	-11.5	129.47	-3.5
2021*: 1	99.61	-4.2	108.06	-6.9	95.12	-2.6

*Provisional data

Note: The indices and the percentage changes are rounded up to two and one decimal digits, respectively, when published.

Table 13. Average indices and rates of change (%) of the 12-month periods of Turnover Index in Industry: Total Market
Base year: 2015=100.0

Code	Division	Average Indices of 12-month periods			Rate of change (%) 2021/2020	Rate of change (%) 2020/2019
		Feb. 2020- Jan. 2021*	Feb. 2019- Jan. 2020*	Feb. 2018- Jan. 2019		
	OVERALL INDEX	99.27	114.58	114.30	-13.4	0.2
B	MINING AND QUARRYING	99.64	108.32	108.76	-8.0	-0.4
05-06-09	Mining of coal and lignite - Extraction of crude petroleum and natural gas - Mining support service activities	24.47	83.03	101.04	-70.5	-17.8
07	Mining of metal ores	193.76	160.10	139.90	21.0	14.4
08	Other mining and quarrying products	98.65	102.23	102.51	-3.5	-0.3
C	MANUFACTURING	99.26	114.67	114.37	-13.4	0.3
10	Food	102.82	104.85	101.35	-1.9	3.5
11	Beverages	96.95	117.48	115.08	-17.5	2.1
12	Tobacco products	133.79	128.17	114.66	4.4	11.8
13	Textiles	96.90	108.67	106.83	-10.8	1.7
14	Wearing apparel	62.44	93.93	96.88	-33.5	-3.0
15	Leather and related products	52.02	89.76	90.20	-42.0	-0.5
16	Wood and products of wood and cork, except furniture	100.71	109.05	104.15	-7.7	4.7
17	Paper and paper products	112.79	114.87	112.97	-1.8	1.7
18	Printing and reproduction of recorded products	88.87	96.54	96.47	-7.9	0.1
19	Coke and refined petroleum products	74.84	120.81	128.60	-38.1	-6.1
20	Chemicals and chemical products	120.31	117.95	111.81	2.0	5.5
21	Basic pharmaceutical products and pharmaceutical preparations	166.47	142.10	119.73	17.2	18.7
22	Rubber and plastic products	109.51	107.14	103.23	2.2	3.8
23	Other non-metallic mineral products	102.22	112.12	107.00	-8.8	4.8
24	Basic metals	122.02	125.05	137.11	-2.4	-8.8
25	Fabricated metal products, except machinery and equipment	98.13	100.93	100.46	-2.8	0.5
26	Computers, electronic and optical products	159.16	163.23	129.04	-2.5	26.5
27	Electrical equipment	126.63	128.83	114.69	-1.7	12.3
28	Machinery and equipment n.e.c.	105.93	109.54	106.18	-3.3	3.2
29	Motor vehicles, trailers and semi-trailers	109.79	110.46	91.66	-0.6	20.5
30	Other transport equipment	61.76	62.84	67.89	-1.7	-7.4
31	Furniture	103.70	115.69	114.64	-10.4	0.9
32	Other manufacturing	87.21	106.15	99.63	-17.8	6.5
33	Repair and installation of machinery and equipment	97.02	98.44	91.33	-1.4	7.8
	MAIN INDUSTRIAL GROUPINGS					
1	Energy	74.49	120.62	128.42	-38.2	-6.1
2	Intermediate goods	112.73	115.14	114.63	-2.1	0.4
3	Capital goods	103.25	105.91	99.50	-2.5	6.4
4	Consumer Durables	97.19	108.29	105.77	-10.3	2.4
5	Consumer Non-Durables	108.11	111.20	105.74	-2.8	5.2

*Provisional data

Note: The indices and the percentage changes are rounded up to two and one decimal digits, respectively, when published.

METHODOLOGICAL NOTES

Generally	The Industrial Turnover Index is an indicator of an enterprise's business cycle showing the monthly evolution of the market of goods and services in industry. The first compilation of the Turnover Index was completed by the Hellenic Statistical Authority in 2006, with base year 2000=100.0 and is compiled from 2000 onwards.
Purpose of the index	The purpose of this index is to measure the monthly activity of the industrial sector in terms of value. Turnover comprises the totals invoiced by the observation units during the reference period and corresponds to the market sales of goods or services supplied to third parties. The purposes and the characteristics of the Turnover Index apply, as well, to the indices for the distinction between domestic and non-domestic turnover.
Legal Framework	The compilation and publication of the Turnover Index is based on the framework of the implementation of Council Regulation (EC) No 1165/1998 concerning short-term statistics (STS-R), as well as Regulation (EC) No 1158/2005 of the European Parliament and of the Council amending Council Regulation (EC) No 1165/1998. Furthermore, this index is governed by Regulation (EC) No 1893/2006 of the European Parliament and of the Council, by Commission Regulation (EC) No 656/2007, by Regulation (EC) No 451/2008 of the Council, by Regulation (EU) No 2019/2152 of the European Parliament and of the Council on European business statistics, as well as Commission Implementing Regulation (EU) 2020/1197 laying down technical specifications and arrangements pursuant to Regulation (EU) 2019/2152.
Reference period	Month.
Base year	2015=100.0.
Revision	The latest revision of the Turnover Index in Industry (base year 2015=100.0) took place in the framework of Council Regulation (EC) No 1165/1998 concerning short-term statistics. In accordance with this regulation the index is revised every five years, in years ending in 0 or 5.
Statistical classifications	At the level of classes of economic activities, the statistical classification of economic activities NACE Rev. 2 of EU was used (Regulation No 1893/2006), while at the level of main industrial groupings, the allocation of two-digit and three-digit NACE Rev. 2 headings to categories of aggregate classification was used, in accordance with Commission Regulation No 656/2007.
Geographical coverage	The index covers the whole Country.
Coverage of economic activities	The Turnover Index in Industry is compiled for all activities listed in Sections B (mining and quarrying) and C (manufacturing) of the NACE Rev. 2 statistical classification.
Computation of the Index	The Turnover Index in Industry is a fixed base index. This index is calculated at a first stage at the four-digit level of economic activity and subsequently, with the implementation of appropriate weighting coefficients, the index is calculated at higher levels (three-level and two-level of economic activity) as well as at the level of Main Industrial Groupings (MIGs).
Data collection and processing in the context of the COVID-19 pandemic	The compilation of the indices was mainly based on data collected by the enterprises (via web-based application, email), as well as data from administrative sources. For January 2021 there was no significant change in the data collection compared to previous reference months.
Publication of data	The Turnover Index in Industry (2015=100.0) is released since August 2019 with June 2019 as first reference month. Data with base year 2015=100.0 are available from January 2000 onwards.
References	More information about the methodology concerning the compilation and calculation of the index and for the time series is available on the website of the Hellenic Statistical Authority (ELSTAT) (http://www.statistics.gr/en/statistics/-/publication/DKT24/).