



HELLENIC REPUBLIC
HELLENIC STATISTICAL AUTHORITY

Piraeus, 30 March 2020

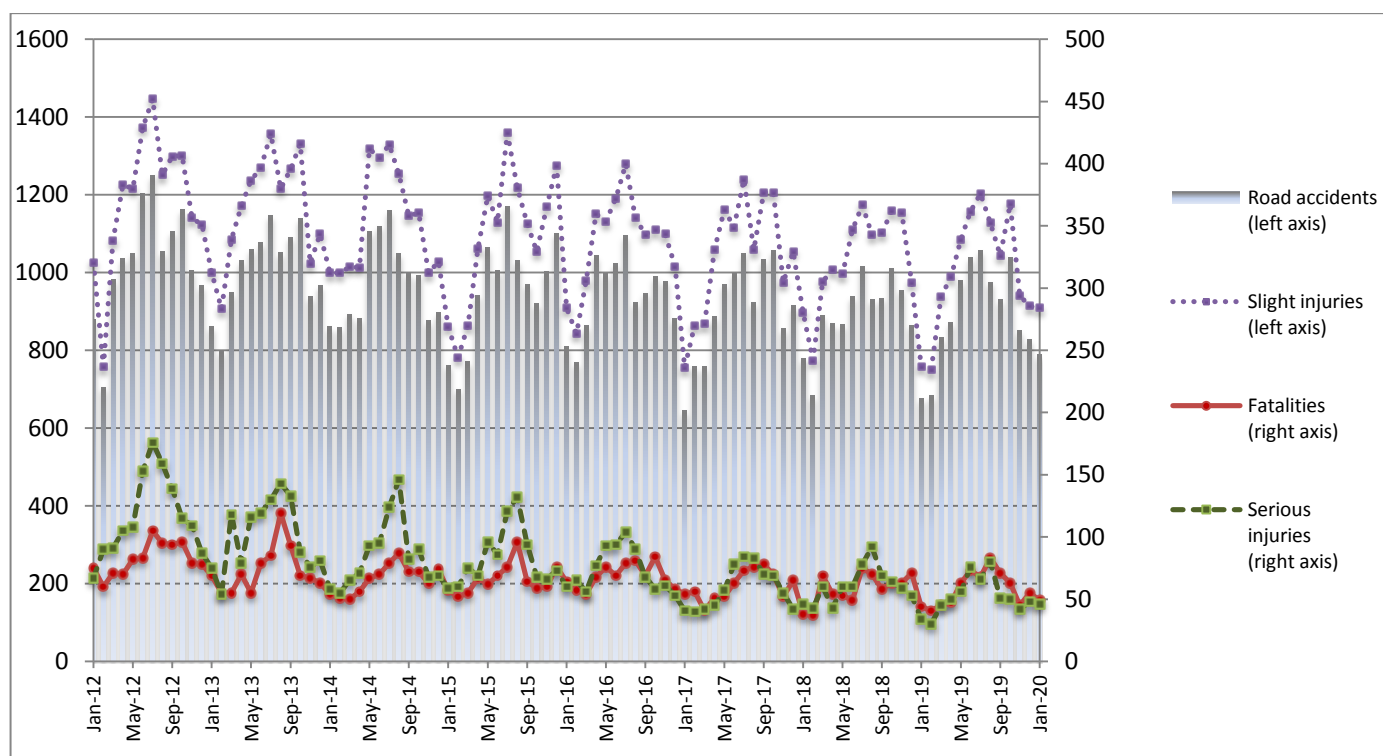
PRESS RELEASE

ROAD TRAFFIC ACCIDENTS: January 2020

The Hellenic Statistical Authority (ELSTAT) announces provisional¹ data on Road Traffic Accidents for January 2020. In particular, the road traffic accidents which occurred in Greece, resulting in death or injury, increased by 16.6% in comparison with the corresponding month of 2019 (788 road accidents in January 2020, against 676 road accidents in January 2019).

The casualties of the injury-causing accidents that occurred in January 2020 were as follows: 49 deaths, 46 serious injuries and 909 slight injuries. In contrast, in January 2019 the corresponding figures were: 44 deaths, 34 serious injuries and 758 slight injuries. Therefore, road accident casualties in January 2020 increased by 11.4% for deaths, by 35.3% for serious injuries and by 19.9% for slight injuries.

**Graph 1: Road traffic accidents and casualties,
January 2012 - January 2020**



Provisional data for the period February 2019 – January 2020

Information on methodological issues:

Sectoral Statistics Division
Transport Statistics Section
P. Tzortzi
Tel: +30 213 135 2187
Fax : +30 213 135 2757
e-mail: p.tzortzi@statistics.gr

Information for data provision:

Tel: 213 135 2022, 2308, 2310
e-mail: data.dissem@statistics.gr

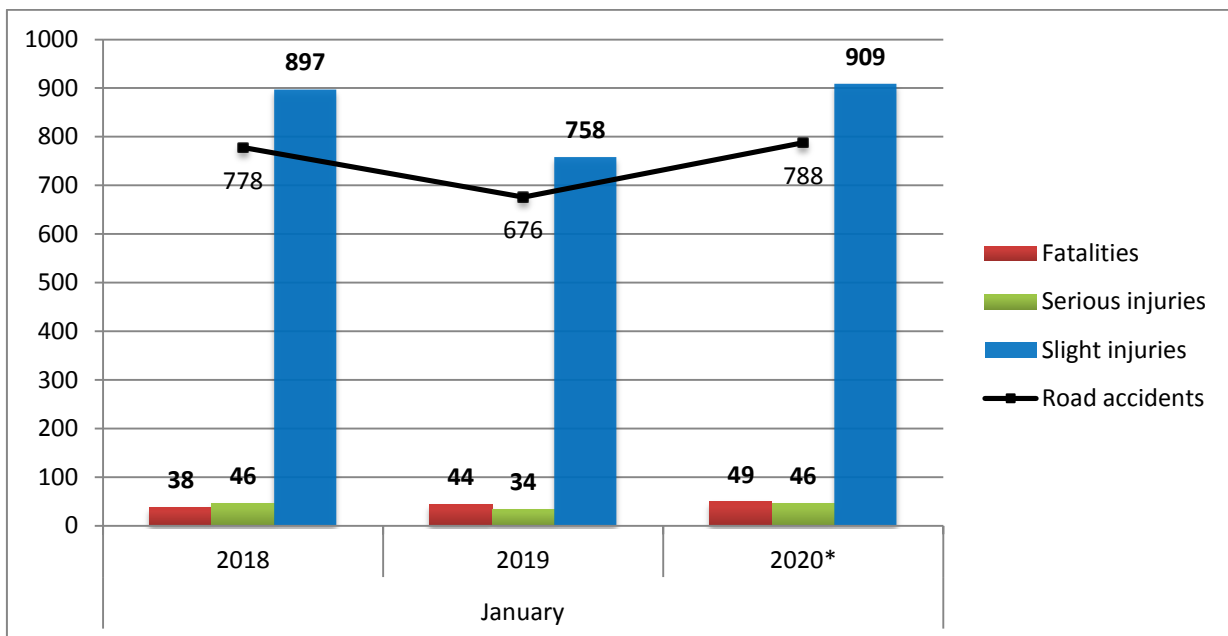
¹ Data for the reference year are provisional until the finalisation of the annual data, which become final 10 months after the end of the reference year. During these 10 months the provisional data are updated on the basis of the data of the Road Accident Forms which are transmitted to ELSTAT by Police Authorities.

Table 1: Road traffic accidents and casualties, January 2018 - 2020*

	January				
	2018	2019	2019/2018 (%)	2020*	2020*/2019 (%)
Road accidents	778	676	-13.1	788	16.6
Fatalities	38	44	15.8	49	11.4
Total injuries	943	792	-16.0	955	20.6
Serious injuries	46	34	-26.1	46	35.3
Slight injuries	897	758	-15.5	909	19.9

* Provisional data

Graph 2: Road traffic accidents and casualties, January 2018 - 2020*



* Provisional data

Table 2: Road traffic accidents and casualties, by region and department, January 2019 and 2020*

Region and department	Road accidents			Fatalities			Serious injuries			Slight injuries		
	2019	2020*	%	2019	2020*	%	2019	2020*	%	2019	2020*	%
Greece Total	676	788	16.6	44	49	11.4	34	46	35.3	758	909	19.9
Anatoliki Makedonia and Thraki (East Macedonia and Thrace)	27	32	18.5	3	5	66.7	3	1	-66.7	26	35	34.6
Drama	3	8	166.7	1	1		0	0		2	10	
Evros	7	3	-57.1	0	1		0	0		8	3	
Kavala	10	11	10.0	0	2		3	0		11	12	
Xanthi	1	6	500.0	0	0		0	1		1	7	
Rodopi	6	4	-33.3	2	1		0	0		4	3	
Kentriki Makedonia (Central Macedonia)	127	171	34.6	6	11	83.3	5	5	0.0	139	219	57.6
Imathia	1	1	0.0	0	0		0	0		1	1	
Thessaloniki	111	149	34.2	1	6		5	4		124	198	
Kilkis	5	9	80.0	1	3		0	1		5	9	
Pella	3	6	100.0	0	1		0	0		3	6	
Pieria	2	1	-50.0	1	0		0	0		1	1	
Serres	1	2	100.0	2	0		0	0		1	2	
Chalkidiki	4	3	-25.0	1	1		0	0		4	2	
Dytiki Makedonia (West Macedonia)	2	6	200.0	0	2	-	0	0	-	7	7	0.0
Grevena	1	0	-100.0	0	0		0	0		4	0	
Kastoria	0	1	-	0	0		0	0		0	1	
Kozani	1	5	400.0	0	2		0	0		3	6	
Florina	0	0	-	0	0		0	0		0	0	
Ipeiros (Epirus)	2	10	400.0	0	3	-	0	0	-	2	8	300.0
Arta	0	2	-	0	0		0	0		0	3	
Thesprotia	1	0	-100.0	0	0		0	0		1	0	
Ioannina	1	7	600.0	0	2		0	0		1	5	
Preveza	0	1	-	0	1		0	0		0	0	
Thessalia (Thessaly)	11	12	9.1	1	4	300.0	2	2	0.0	11	9	-18.2
Karditsa	2	4	100.0	0	2		0	0		2	2	
Larissa	3	5	66.7	1	1		1	2		4	2	
Magnissia	2	2	0.0	0	0		1	0		1	5	
Trikala	4	1	-75.0	0	1		0	0		4	0	
Ionian Nisia (Ionian Islands)	4	4	0.0	1	1	0.0	0	0	-	4	4	0.0
Zakynthos	1	1	0.0	0	1		0	0		1	0	
Kerkyra	1	2	100.0	1	0		0	0		0	2	
Kefallinia	0	0	-	0	0		0	0		0	0	
Lefkada	2	1	-50.0	0	0		0	0		3	2	

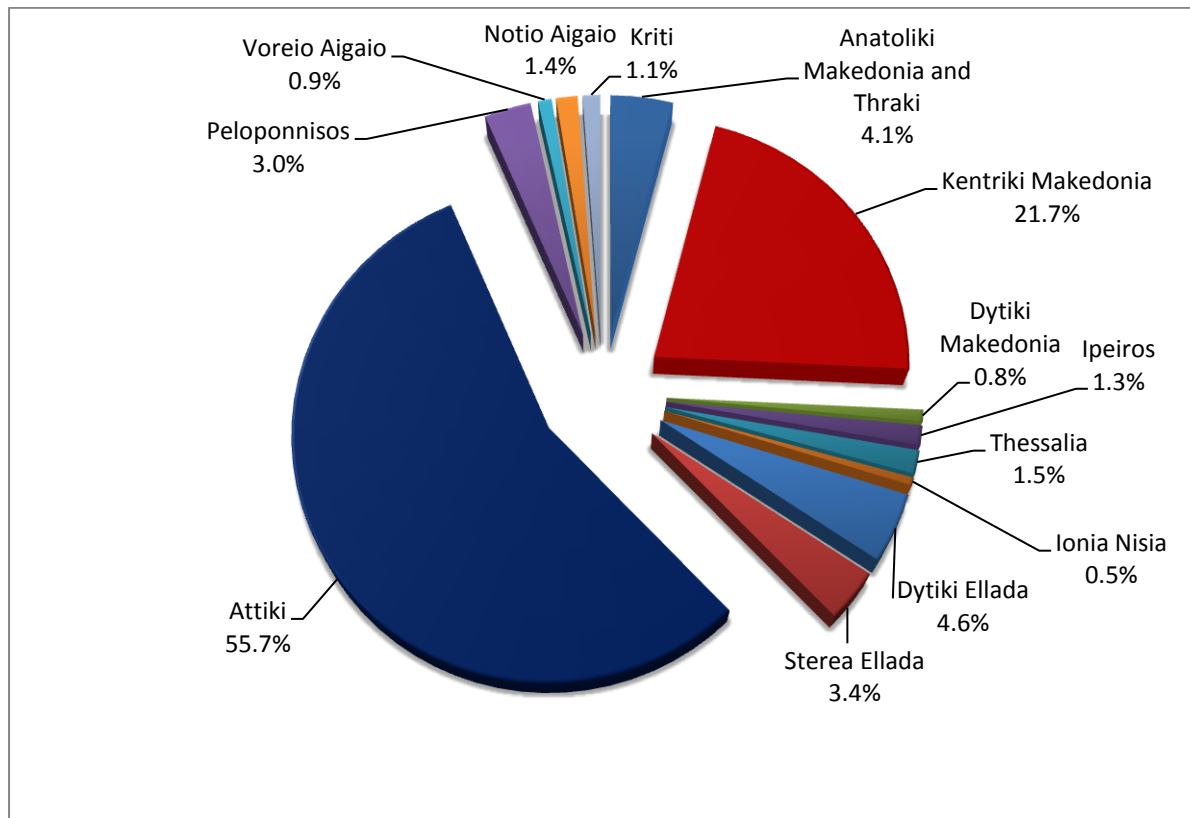
* Provisional data

Table 2: Road traffic accidents and casualties, by region and department, January 2019 and 2020* (Continued)

Region and department	Road accidents			Fatalities			Serious injuries			Slight injuries		
	2019	2020*	%	2019	2020*	%	2019	2020*	%	2019	2020*	%
Dytiki Ellada (West Greece)	30	36	20.0	4	4	0.0	2	7	250.0	35	38	8.6
Etolia & Akarnania	14	13	-7.1	2	1		1	2		15	14	
Achaia	12	15	25.0	1	3		1	4		12	15	
Ilia	4	8	100.0	1	0		0	1		8	9	
Sterea Ellada	17	27	58.8	4	5	25.0	0	1	-	22	34	54.5
Viotia	2	6	200.0	1	3		0	1		7	9	
Evia	9	10	11.1	2	1		0	0		9	13	
Evrytania	1	0	-100.0	1	0		0	0		0	0	
Fthiotida	3	7	133.3	0	1		0	0		4	8	
Fokida	2	4	100.0	0	0		0	0		2	4	
Attiki (Attica)	401	439	9.5	17	9	-47.1	13	20	53.8	447	500	11.9
Peloponnisos (Peloponnese)	20	24	20.0	3	2	-33.3	3	1	-66.7	30	32	6.7
Argolida	2	4	100.0	0	1		0	0		2	6	
Arkadia	3	6	100.0	0	0		1	1		5	5	
Korinthia	8	7	-12.5	0	1		2	0		14	9	
Lakonia	2	1	-50.0	0	0		0	0		3	1	
Messinia	5	6	20.0	3	0		0	0		6	11	
Voreio Aigaio (North Aegean)	11	7	-36.4	0	1	-	1	3	200.0	12	7	-41.7
Lesvos	5	3	-40.0	0	1		1	1		6	5	
Samos	4	3	-25.0	0	0		0	1		4	2	
Chios	2	1	-50.0	0	0		0	1		2	0	
Notio Aigaio (South Aegean)	12	11	-8.3	0	1	-	3	3	0.0	12	9	-25.0
Dodekanissos	7	7	0.0	0	1		2	3		7	5	
Kyklades	5	4	-20.0	0	0		1	0		5	4	
Kriti (Crete)	12	9	-25.0	5	1	-80.0	2	3	50.0	11	7	-36.4
Iraklio	6	7	16.7	1	0		0	2		7	7	
Lassithi	3	1	-66.7	2	0		1	1		4	0	
Rethymno	0	0	-	0	0		0	0		0	0	
Chania	3	1	-66.7	2	1		1	0		0	0	

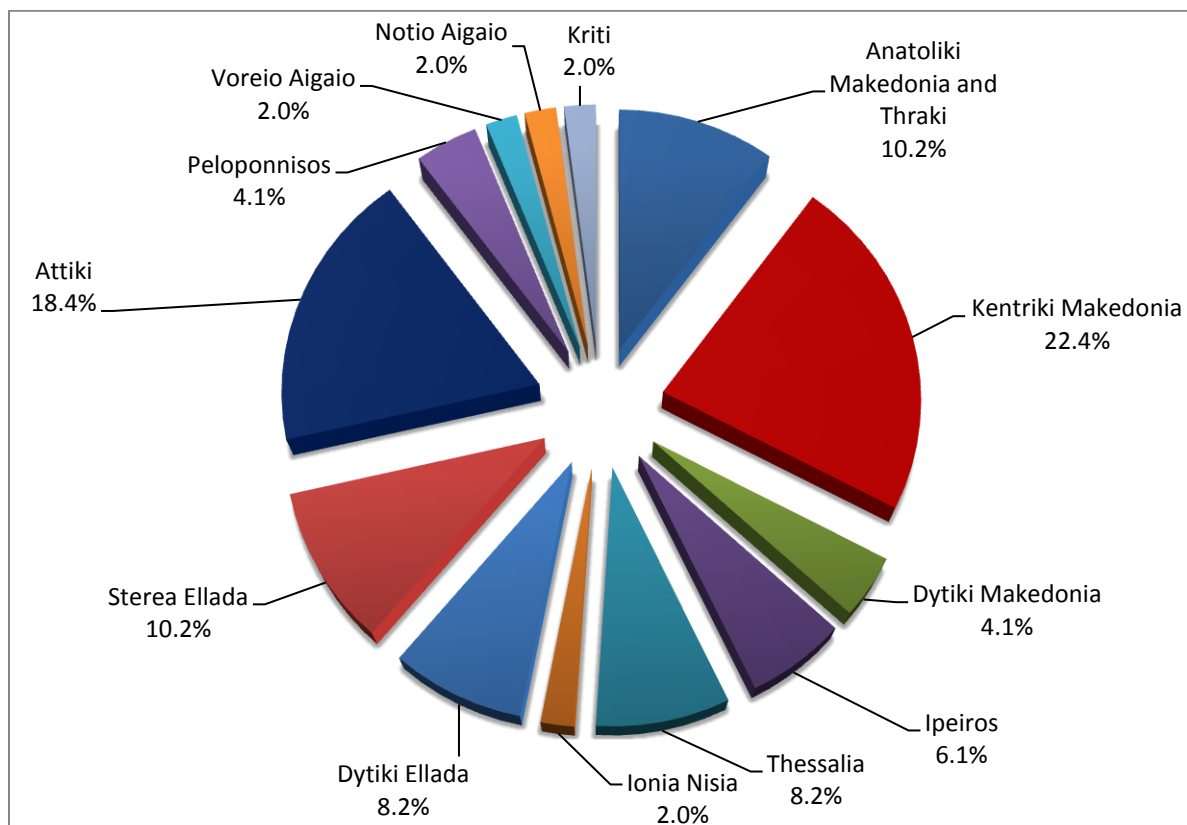
* Provisional data

Graph 3: Road traffic accidents by region, January 2020 *



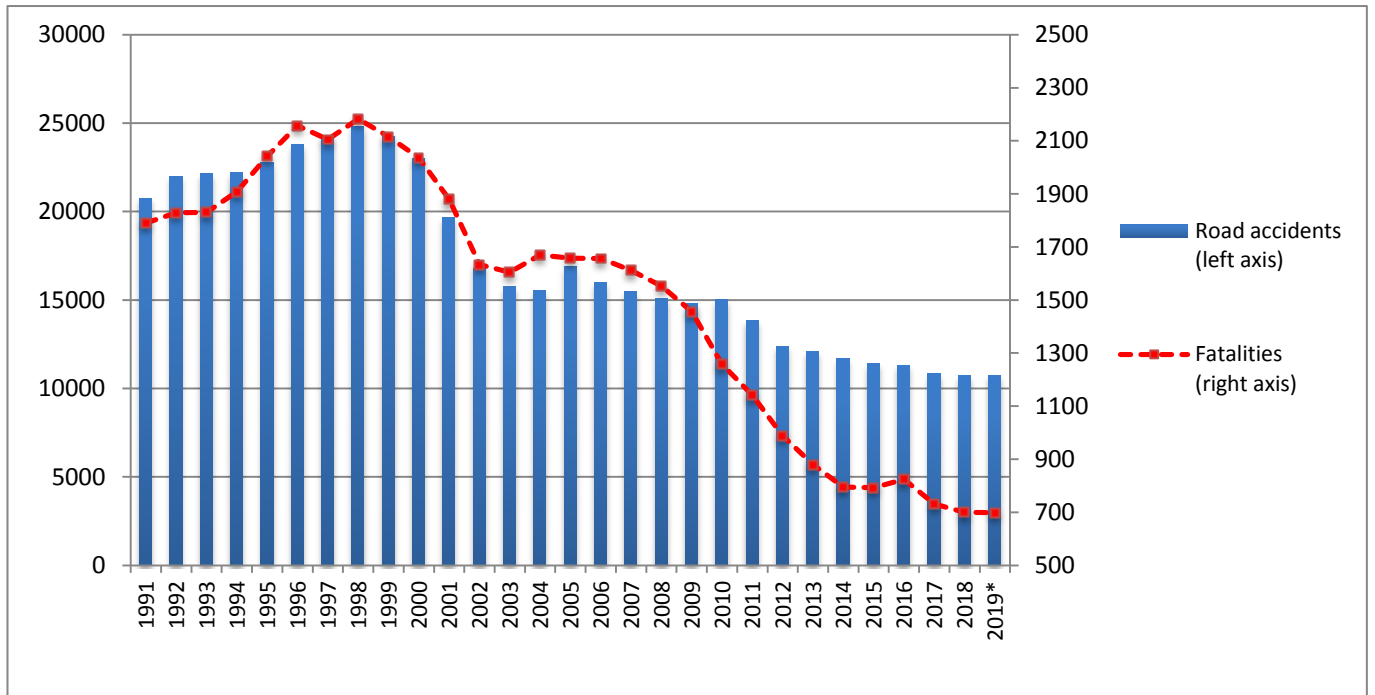
* Provisional data

Graph 4: Fatalities by region, January 2020 *



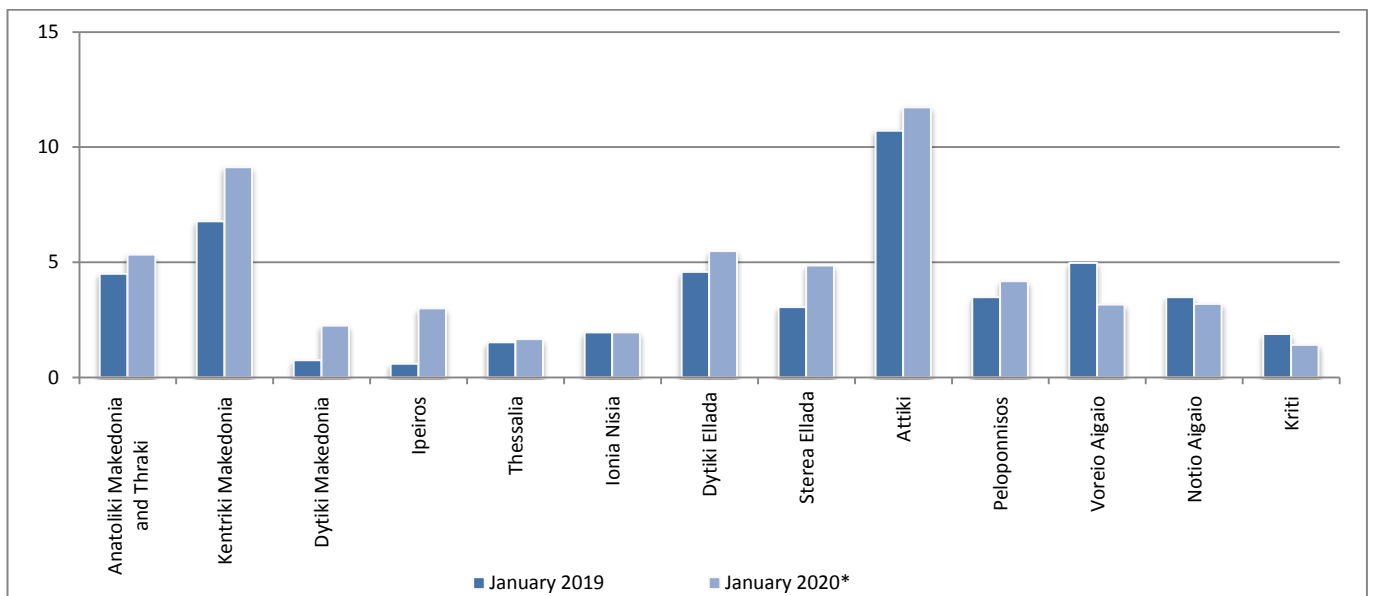
* Provisional data

Graph 5: Total road traffic accidents and fatalities, 1991-2019*



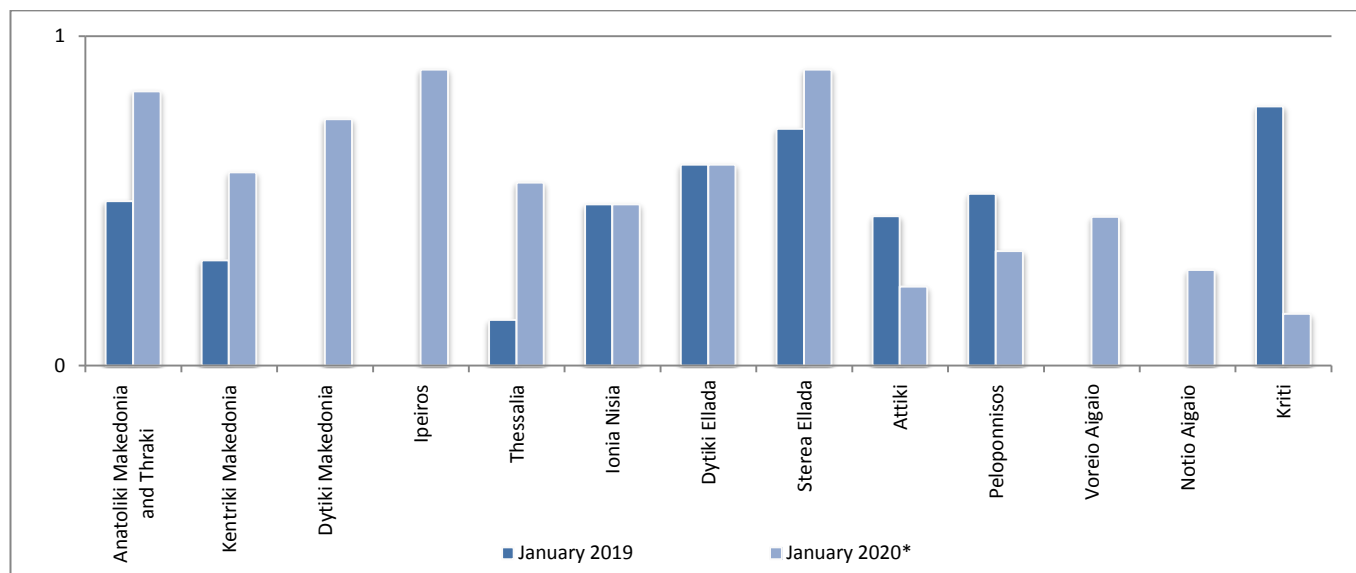
Provisional data for the period February 2019 – December 2019

Graph 6: Road traffic accidents per 100,000 inhabitants

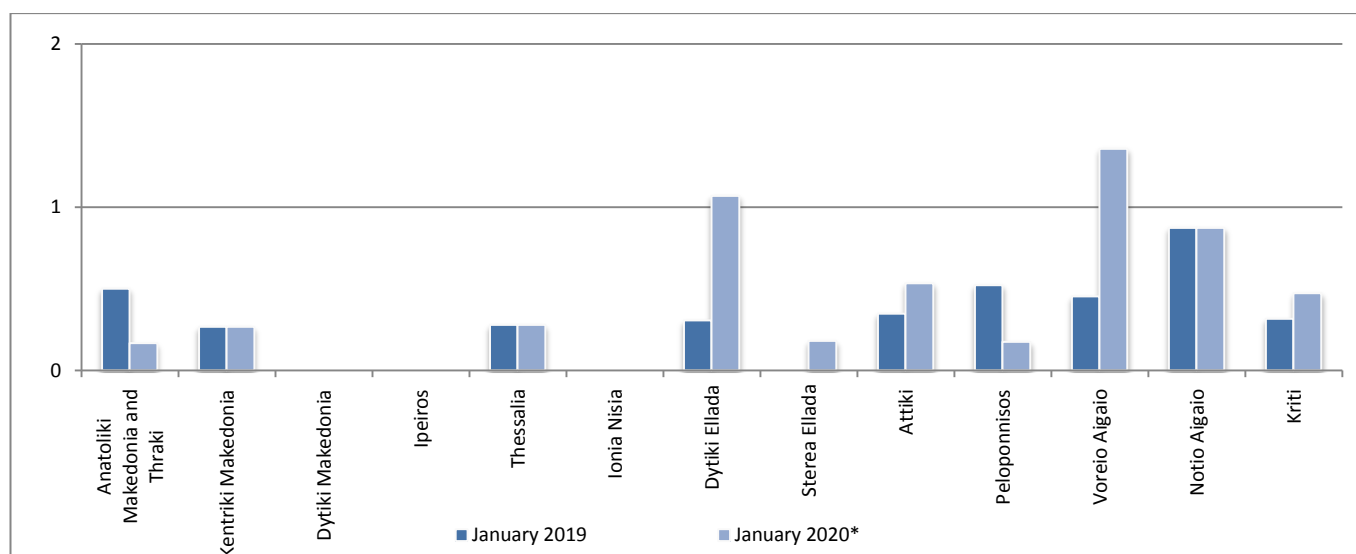


** Provisional data*

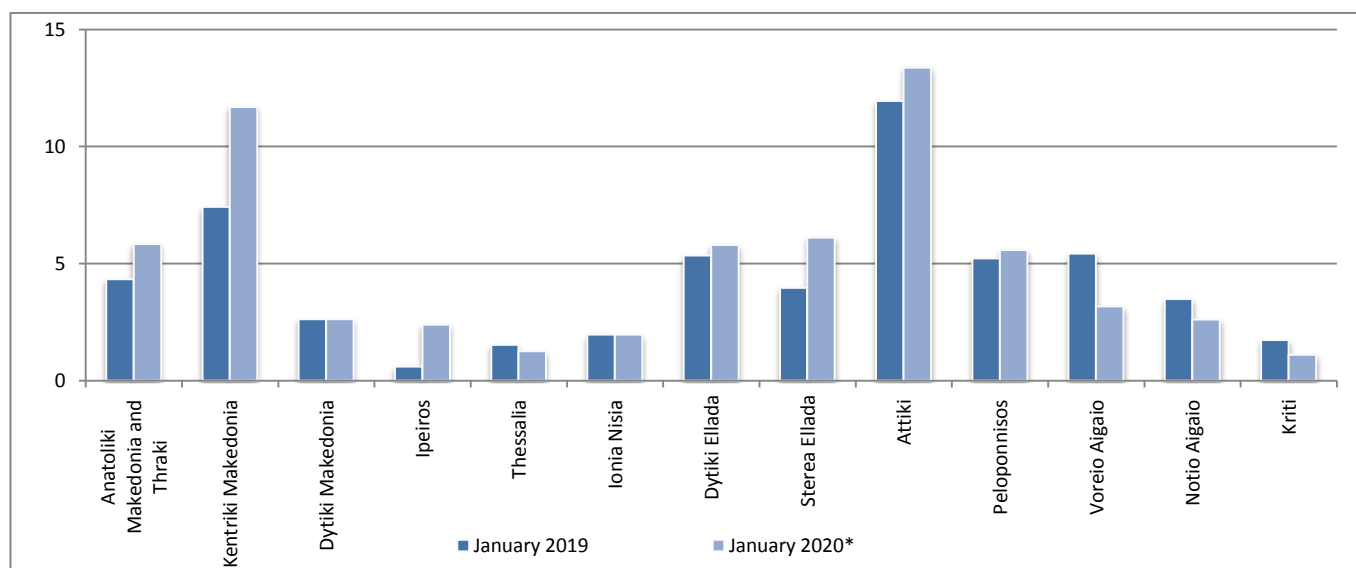
Graph 7: Fatalities per 100,000 inhabitants



Graph 8: Serious injuries per 100,000 inhabitants



Graph 9: Slight injuries per 100,000 inhabitants



* Provisional data

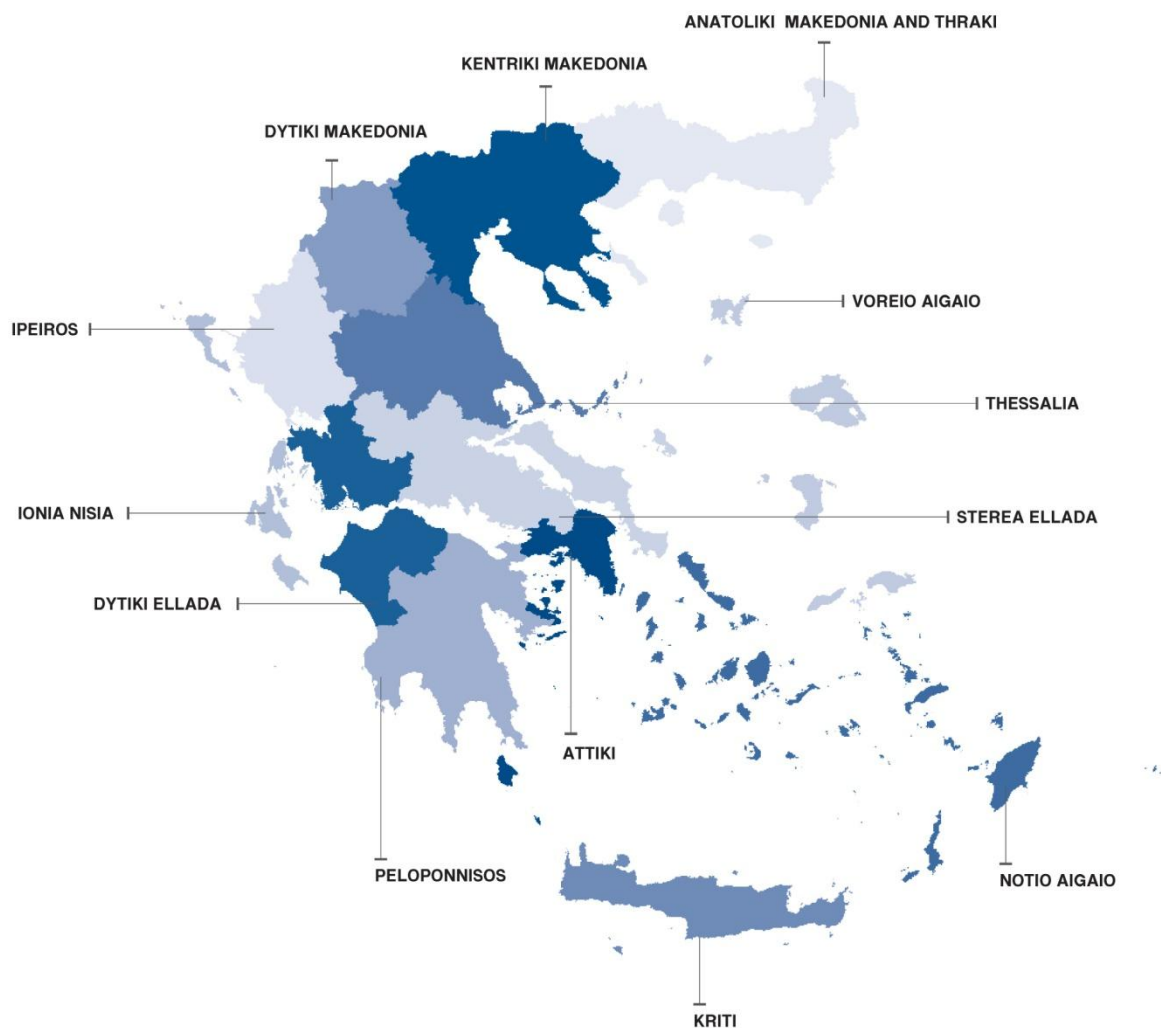
EXPLANATORY NOTES

Survey on Road Traffic Accidents

The Survey on Road Traffic Accidents is conducted on a monthly basis and it records, for each region (see map) and department of Greece and for each month separately, the number of accidents resulting in death or injury, as well as the number of persons injured by categories (drivers, passengers, pedestrians).

On a yearly basis, road traffic accidents are further analyzed. The competent agencies for filling in/collecting the forms on road accidents are the local Police Authorities and the local Port Authorities of Greece.

The lower level of analysis for the place where an injury road accident occurred is the settlement. Data are collected on a monthly basis. The main variables are the following: place of accident, kind of road, casualties, conditions of road surface and type of road.



Legal basis

The Survey on Road Traffic Accidents is governed by Council Decision 93/704 of the European Community.

Reference period

Monthly.

Availability of data

Provisional data are available 2 months after the reference month.
Final data are available 10 months after the reference year.

National

Road accident (injury accident): Any accident involving at least one road motor vehicle in motion

definitions on a public road or square to which the public has access (excluding yards, industrial sites or vehicle depot of public transport enterprises), resulting in at least one injured or killed person. Accidents with only material damages are not included.

Fatality (Death): Any person killed immediately or dying within 30 days as a result of an injury accident (This national definition applies since 01.01.1996)

Person injured: Any person who sustained an injury as result of an injury accident, and who normally needs medical treatment.

Serious injury: Any person who sustained an injury as result of an injury accident, such as brain damages, mutilation, multiple injuries, which may result in lack of awareness or which are life-threatening.

Slight injury: Any person injured who sustained minor and not life-threatening injuries.

Vehicle: Include motor vehicles, trolleybuses, motorcycles, bicycles, motorbikes, agricultural and road making machines, animal and hand-drawn vehicles. Railway vehicles are excluded, unless the road accident involves at least one of the aforementioned types of vehicles and therefore, railway vehicles are considered vehicles.

Methodology The forms of the survey are filled in by the local Police Authorities and the local Port Authorities as well.

References More information about Road Traffic Accidents is available on ELSTAT's website and more specifically at the link: <https://www.statistics.gr/en/statistics/-/publication/SDT03/->.