



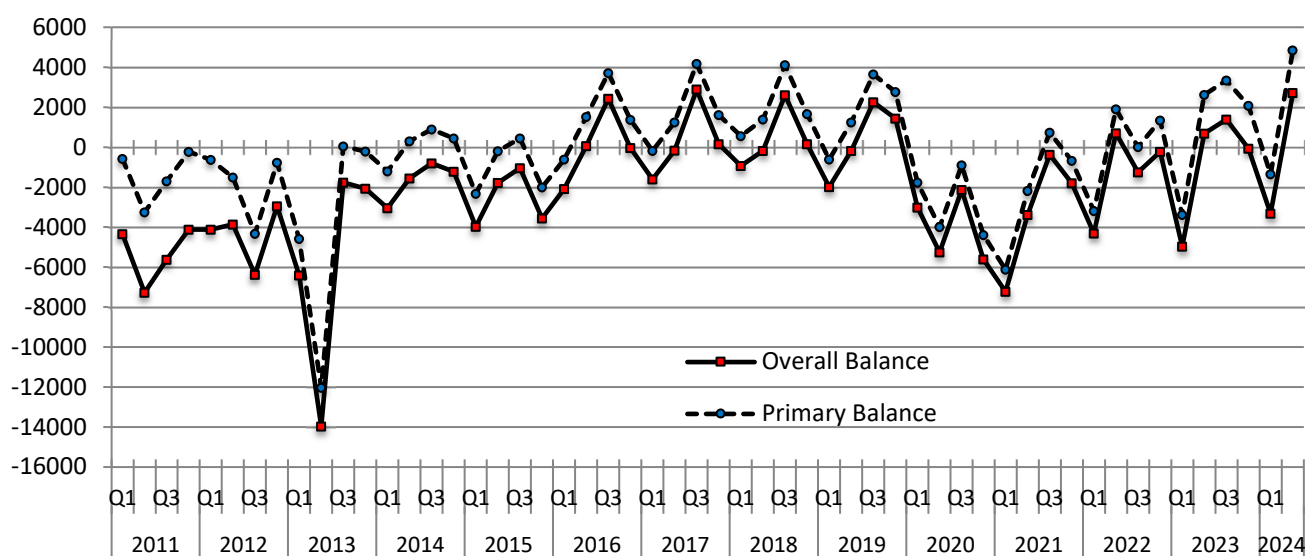
Quarterly Non-Financial Accounts of General Government 2nd Quarter 2024 (Provisional data)

The Hellenic Statistical Authority (ELSTAT) announces the quarterly non-financial accounts of General Government for the second quarter of 2024 (Table 1 & Table 2) as well as data on General Government debt at the end of that period (Table 3). These data have been produced on the basis of the Regulation ESA 2010 (549/2013) for the System of National Accounts, which became obligatory as of 01.09.2014.

Since the first quarter of 2009, the quarterly non-financial accounts of General Government have been compiled by ELSTAT based mainly on direct data sources. The data are compiled in full consistency with the European System of Accounts - ESA2010. It should be noted that the methods used to compile data on a quarterly basis are consistent with the methods used to compile the annual data.

The quarterly non-financial accounts of General Government provide information on the aggregates constituting General Government revenue (taxes, social contributions, capital transfers, etc) and expenditure (compensation of employees, intermediate consumption, social benefits, interest payments, etc).

Graph 1: Overall and Primary Balance of General Government (in million EUR)



Information on methodological issues:

Division of National Accounts
Section of General Government Accounts
Head of Section: Konstantinos Chrissis
Tel: +30 213 135 2079
Email: k.chrissis@statistics.gr

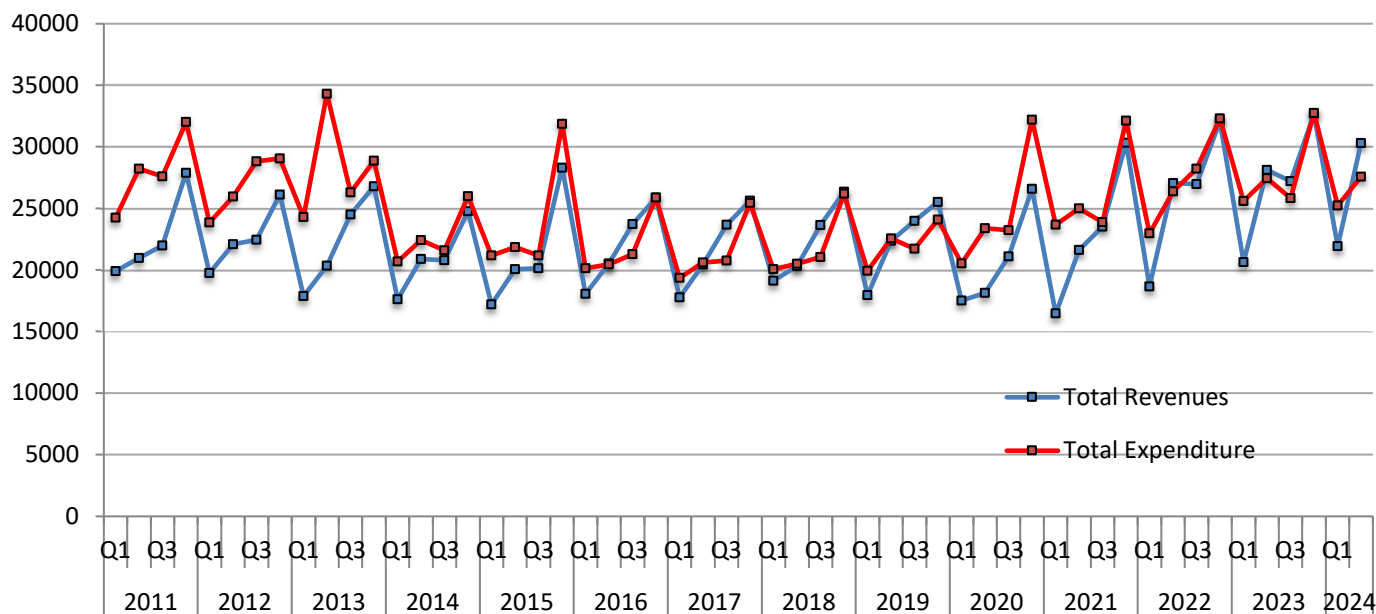
Information for data provision:

Tel: +30 213 135 2022, 2308, 2310
Email: data.dissem@statistics.gr

TABLE 1: Quarterly non-financial accounts of General Government
2022 Q1 – 2024 Q2 (million EUR)

ITEMS	2022				2023				2024	
	Q1	Q2	Q3	Q4	Q1	Q2	Q3	Q4	Q1	Q2
Total Revenue	18,654	27,058	26,971	32,071	20,613	28,118	27,214	32,670	21,917	30,292
Taxes on production and imports	7,269	9,548	11,812	10,881	7,844	9,929	10,197	10,458	7,762	10,722
Taxes on income and property	2,947	5,999	4,325	6,429	3,327	7,114	5,936	6,879	3,825	7,566
Social contributions	6,557	7,416	6,916	8,152	6,761	7,191	7,449	7,818	7,439	7,743
Other	1,596	2,762	2,845	3,876	2,185	3,058	2,488	3,953	2,413	3,291
Capital transfers	285	1,333	1,073	2,733	496	826	1,144	3,562	478	970
Total Expenditure	22,968	26,359	28,229	32,302	25,582	27,427	25,831	32,737	25,237	27,568
Primary expenditure	21,846	25,151	26,967	30,724	23,992	25,502	23,875	30,588	23,269	25,440
Compensation of employees	5,506	5,662	5,654	5,918	5,677	5,878	5,837	6,083	5,971	6,122
Social benefits	9,973	10,770	10,840	11,726	11,419	11,374	10,722	12,407	11,389	11,528
Goods and Services	2,071	2,867	2,811	3,832	2,217	2,991	2,713	4,207	1,909	2,848
Subsidies	1,315	2,423	4,211	3,596	1,465	772	955	923	590	830
Other current transfers	696	726	775	870	770	759	717	1,019	749	869
Capital transfers	2,285	2,703	2,676	4,782	2,444	3,728	2,931	5,949	2,661	3,243
Interest	1,122	1,208	1,262	1,578	1,590	1,925	1,956	2,149	1,968	2,128
Primary Balance (excluding interest)¹	-3,192	1,907	4	1,347	-3,379	2,616	3,339	2,082	-1,352	4,852
Overall Balance	-4,314	699	-1,258	-231	-4,969	691	1,383	-67	-3,320	2,724
Memorandum Item:										
Support to financial institutions ²	-111	-115	-122	-126	-166	-515	-158	-160	-156	-159

Graph 2: Total Revenues and Expenditure of General Government (in million EUR)



¹ General Government primary balance is defined here as ESA 2010 General Government balance minus interest expenditure of General Government entities to other sectors. It differs from the definition of primary balance used under the Economic Adjustment Program for Greece.

² Sign is negative when expenditures of the support exceed revenues. When the impact of the support to financial institutions is positive for the General Government balance, this is due to the fees accruing on the inter-bank lending guarantees and the bond loan scheme, and the revenues from bank preference shares being greater than the expenditures accrued.

TABLE 2: Quarterly non-financial accounts of General Government
2022 Q1–2024 Q2 - Percentage contribution

ITEMS	2022				2023				2024	
	Q1	Q2	Q3	Q4	Q1	Q2	Q3	Q4	Q1	Q2
As percentage of Total Revenues										
Taxes on production and imports	39.0	35.3	43.8	33.9	38.1	35.3	37.5	32.0	35.4	35.4
Taxes on income and property	15.8	22.2	16.0	20.0	16.1	25.3	21.8	21.1	17.5	25.0
Social contributions	35.2	27.4	25.6	25.4	32.8	25.6	27.4	23.9	33.9	25.6
Other	8.6	10.2	10.5	12.1	10.6	10.9	9.1	12.1	11.0	10.9
Capital transfers	1.5	4.9	4.0	8.5	2.4	2.9	4.2	10.9	2.2	3.2
As percentage of Total Expenditure										
Primary expenditure										
Compensation of employees	95.1	95.4	95.5	95.1	93.8	93.0	92.4	93.4	92.2	92.3
Social benefits	24.0	21.5	20.0	18.3	22.2	21.4	22.6	18.6	23.7	22.2
Goods and Services	43.4	40.9	38.4	36.3	44.6	41.5	41.5	37.9	45.1	41.8
Subsidies	9.0	10.9	10.0	11.9	8.7	10.9	10.5	12.9	7.6	10.3
Other current transfers	5.7	9.2	14.9	11.1	5.7	2.8	3.7	2.8	2.3	3.0
Capital transfers	3.0	2.8	2.7	2.7	3.0	2.8	2.8	3.1	3.0	3.2
Interest	9.9	10.3	9.5	14.8	9.6	13.6	11.3	18.2	10.5	11.8
Interest	4.9	4.6	4.5	4.9	6.2	7.0	7.6	6.6	7.8	7.7

Graph 3: Total Revenues and Expenditure of General Government by category (in million EUR)

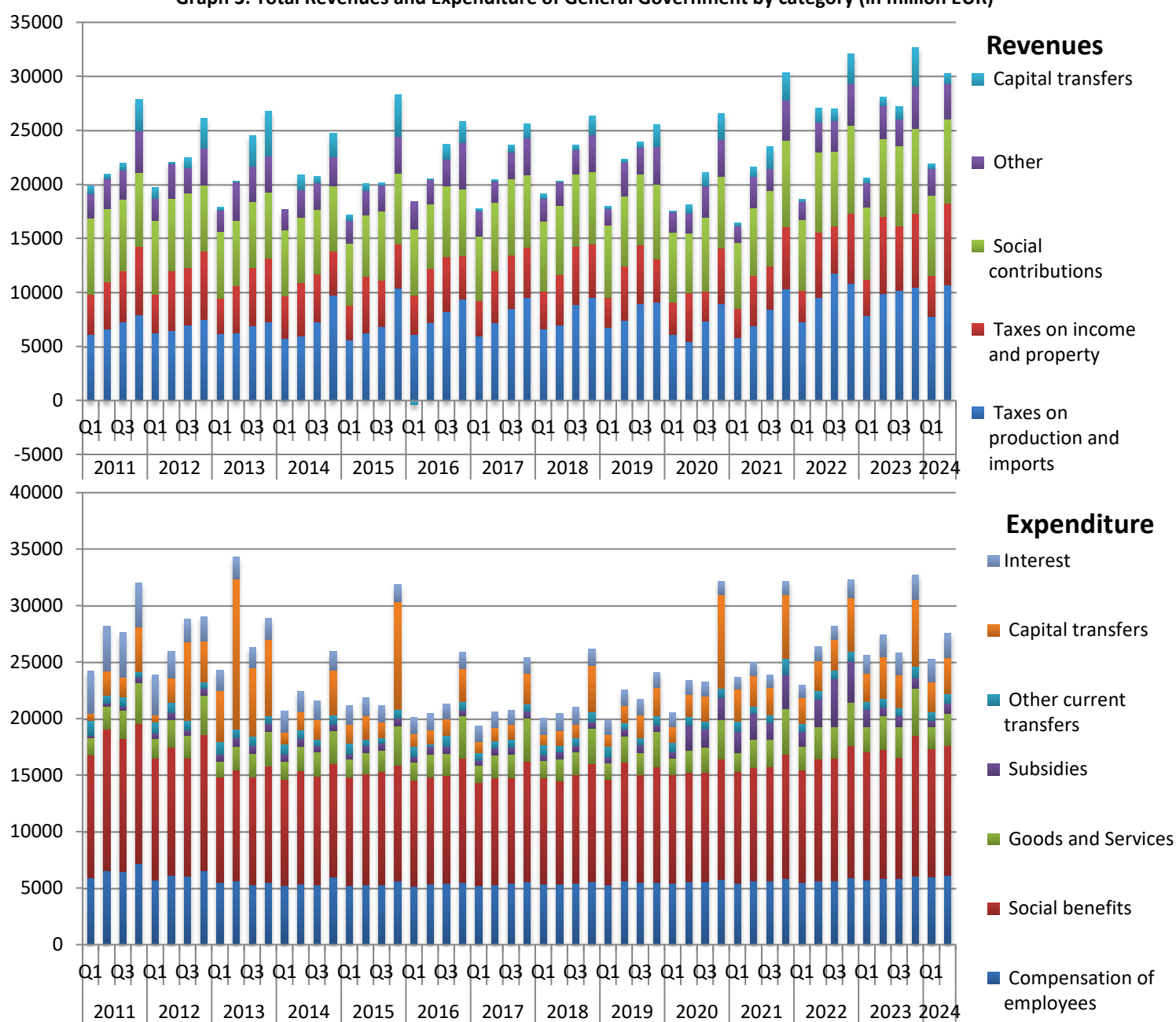
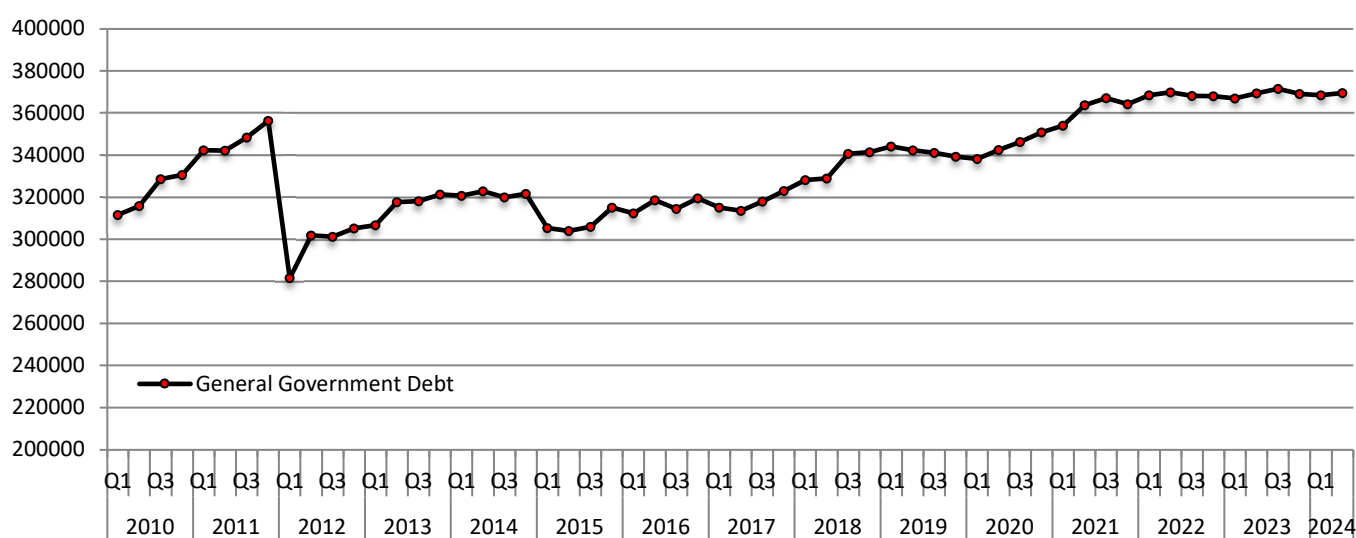


Table 3 below presents the evolution of the consolidated General Government Debt. The analysis of Debt in the categories currency and deposits, securities other than shares and loans, short-term and long-term, is according to the European System of Accounts (ESA2010). It should be noted that the information on debt is presented as the stock of debt at the end of each reference period.

**TABLE 3: Quarterly General Government Debt
2022 Q1 – 2024 Q2 (million EUR)**

	2022				2023				2024	
	Q1	Q2	Q3	Q4	Q1	Q2	Q3	Q4	Q1	Q2
Nominal value of debt outstanding at end of quarter	368,392	369,817	368,156	368,005	366,941	369,346	371,483	369,099	368,365	369,442
Currency and deposits	6,829	7,136	7,467	7,248	6,890	6,850	7,150	7,286	7,002	7,058
Debt Securities	84,043	86,678	85,211	85,246	85,502	88,941	91,321	92,042	94,931	95,234
Short-term (<1 year)	10,948	11,251	11,181	11,089	11,168	11,227	11,208	11,339	10,741	9,312
Long-term (>1 year)	73,095	75,427	74,030	74,157	74,334	77,714	80,113	80,703	84,190	85,922
Loans	277,520	276,003	275,478	275,511	274,549	273,555	273,012	269,771	266,432	267,150
Short-term	3,778	3,647	3,800	5,391	4,052	3,755	3,684	2,685	765	861
Long-term	273,742	272,356	271,678	270,120	270,497	269,800	269,328	267,086	265,667	266,289

Graph 4: General Government Debt - quarterly (in million EUR)



References

Detailed table is available on the website of ELSTAT:
<http://www.statistics.gr/en/statistics/-/publication/SEL05/->