



PRESS RELEASE

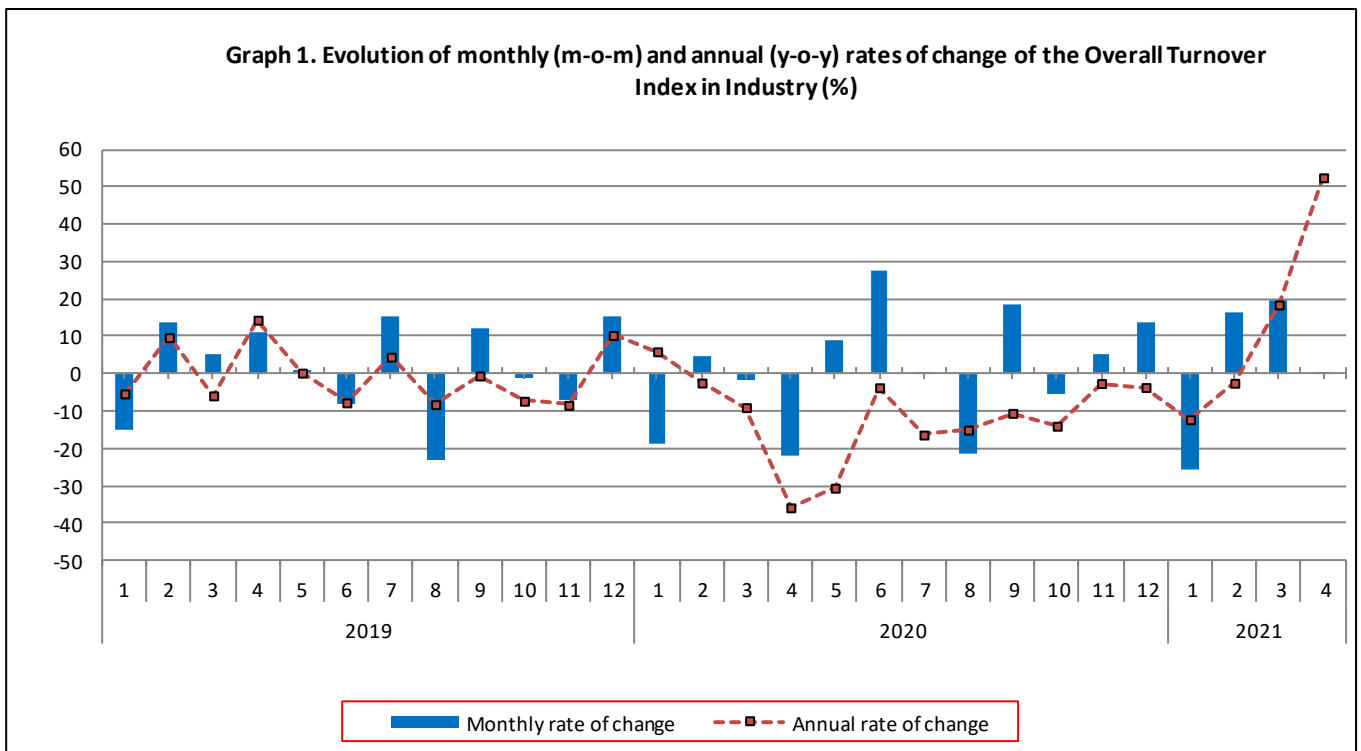
TURNOVER INDEX IN INDUSTRY: April 2021, y-o-y increase of 52.5%

The Hellenic Statistical Authority announces the Turnover Index in Industry with base year 2015=100.0 for April 2021, on the basis of provisional data, which is as follows:

The Overall Turnover Index in Industry (both domestic and non-domestic market) in April 2021 recorded an increase of 52.5% compared with the corresponding index of April 2020. The Overall Turnover Index in Industry in April 2020 decreased by 35.8% compared with the corresponding index in April 2019 (Table 1).

The Overall Turnover Index in Industry in April 2021, compared with March 2021, recorded an increase of 0.6% (Table 6).

The average Overall Turnover Index in Industry for the 12-month period from May 2020 to April 2021 decreased by 5.2%, compared with the corresponding index of the 12-month period from May 2019 to April 2020. The average Overall Turnover Index in Industry for the 12-month period from May 2019 to April 2020 decreased also by 5.2% compared with the corresponding index of the 12-month period from May 2018 to April 2019 (Table 13).



Information for methodological issues:

Division of Business Statistics
Section of Manufacture-Construction Indices and Industrial Products
Head of the Section : Diamantaki Aikaterini
Tel: +30 213 135 2056
E-mail: a.diamantaki@statistics.gr

Information for data provision:

Tel: +30 213 135 2022, 2308, 2310
E-mail: data.dissem@statistics.gr

Evolution of the Overall Turnover Index in Industry in April 2021

I. Annual changes of the Overall Turnover Index in Industry: April 2021/ April 2020

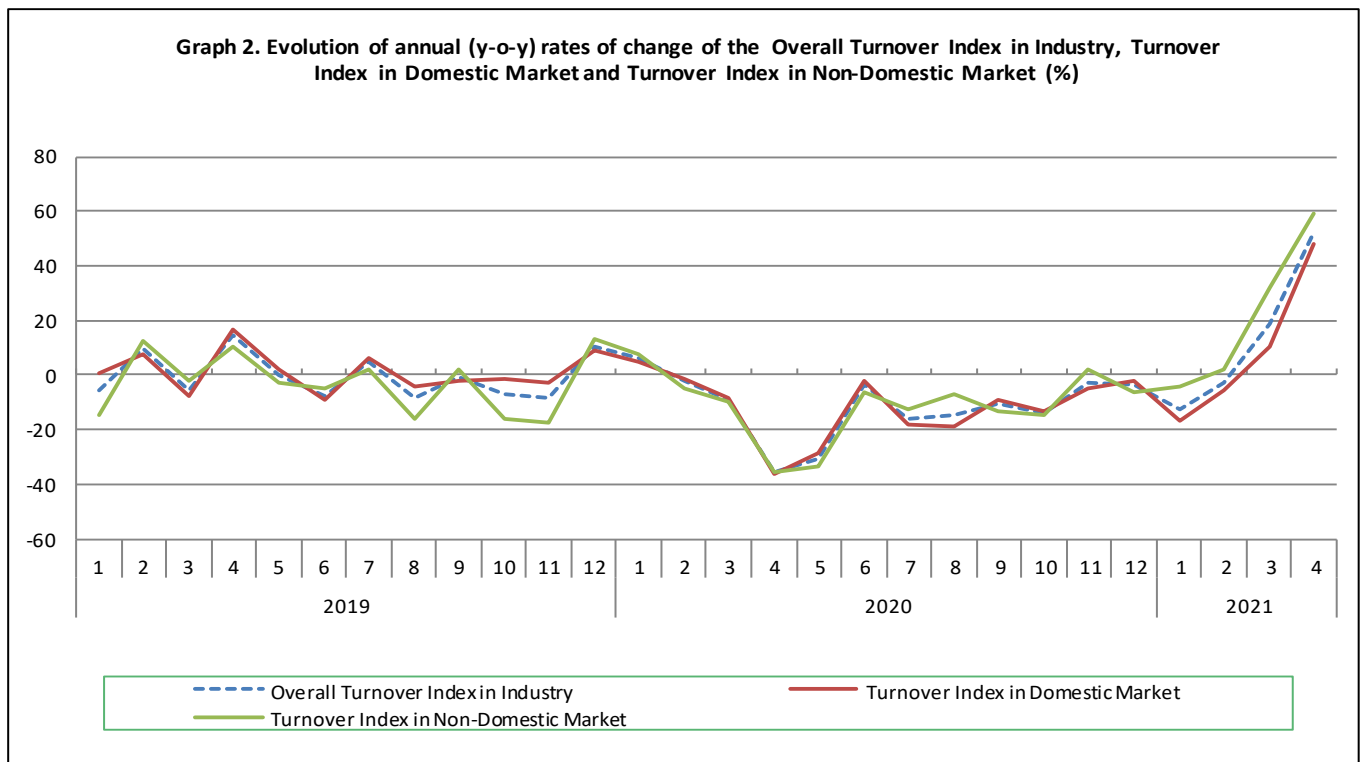
The 52.5% increase in the Overall Turnover Index in Industry in April 2021, compared with the corresponding index in April 2020, was due to the following:

1. Changes in the sub-indices of the industrial sections (Table 1):

- The Turnover Index in Manufacturing increased by 52.8%. The increase was mainly the result of the annual changes of the sub-indices in the following 2-digit divisions: wearing apparel, coke and refined petroleum products, electrical equipment, beverages.
- The Turnover Index in Mining and quarrying increased by 35.1%. The increase was the result of the annual changes of the sub-indices in the following 2-digit divisions: mining of coal and lignite - extraction of crude petroleum and natural gas - mining support service activities, other mining and quarrying products.

2. Changes in the sub-indices in domestic and non-domestic markets:

- The Turnover Index in Industry in non-domestic market increased by 59.5% (Table 3).
- The Turnover Index in Industry in domestic market increased by 48.3% (Table 2).



II. Annual changes of the Turnover Index in Industry in Domestic Market: April 2021/ April 2020

The 48.3% increase of the Turnover Index in Industry in domestic market in April 2021, compared with April 2020, is due to the annual changes in the sub-indices of the following industrial sections (Table 2):

- The Turnover Index in Manufacturing increased by 48.6%. The increase was mainly the result of the annual changes of the sub-indices in the following 2-digit divisions: wearing apparel, electrical equipment, basic metals, fabricated metal products, except machinery and equipment, coke and refined petroleum products.
- The Turnover Index in Mining and quarrying increased by 18.8%. The increase was mainly the result of the annual change of the sub-index in the following 2-digit division: other mining and quarrying products.

III. Annual changes of the Turnover Index in Industry in Non-Domestic Market: April 2021/ April 2020

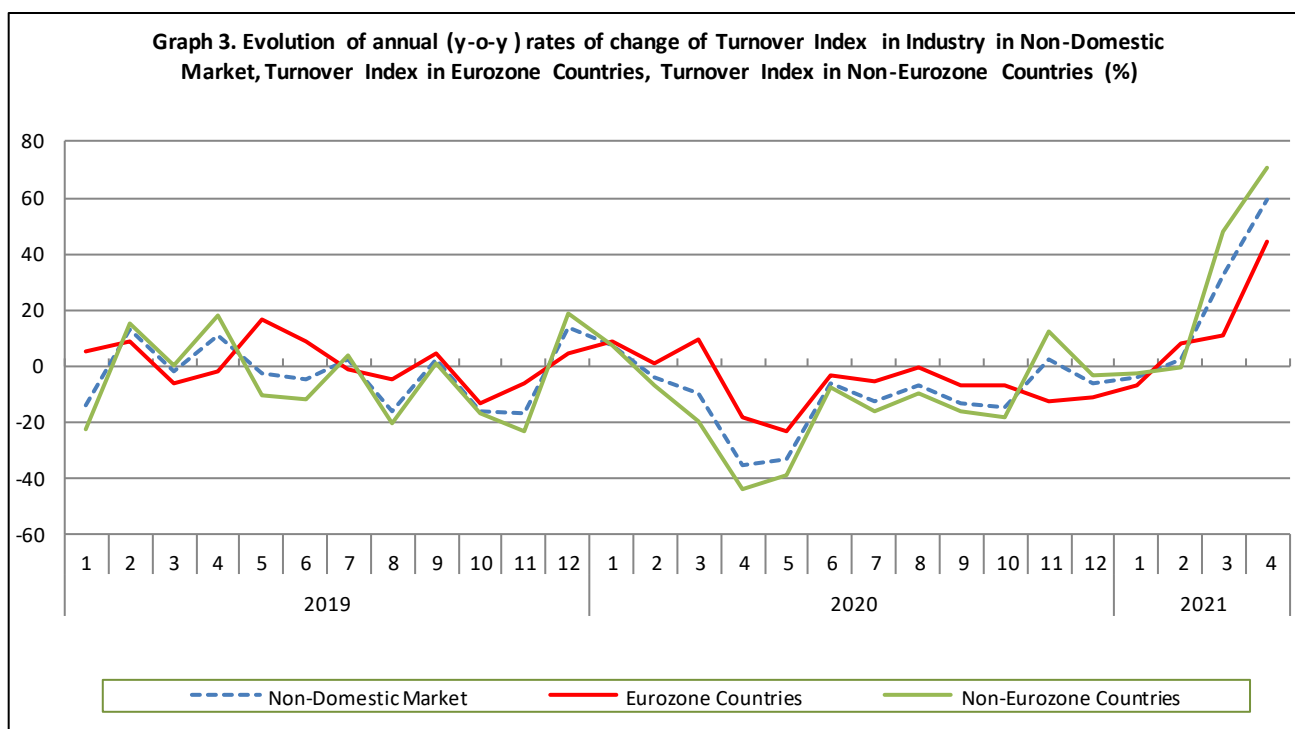
The 59.5% increase of the Turnover Index in Industry in Non-Domestic market in April 2021, compared with April 2020, was due to the following:

1. Changes in the sub-indices of the industrial sections (Table 3):

- The Turnover Index in Manufacturing increased by 59.9%. The increase was mainly the result of the annual changes of the sub-indices in the following 2-digit divisions: coke and refined petroleum products, wearing apparel, other non-metallic mineral products, electrical equipment.
- The Turnover Index in Mining and quarrying increased by 44.9%. The increase was the result of the annual changes of the sub-indices in the following 2-digit divisions: mining of coal and lignite - extraction of crude petroleum and natural gas - mining support service activities, other mining and quarrying products.

2. Changes in the sub-indices in Eurozone and Non-Eurozone countries:

- The Turnover Index in Industry in non-Eurozone countries increased by 70.5% (Table 5).
- The Turnover Index in Industry in Eurozone countries increased by 44.1% (Table 4).



IV. Monthly changes of the Overall Turnover Index in Industry: April 2021/ March 2021

The 0.6% increase of the Overall Turnover Index in Industry in April 2021, compared with the corresponding index in March 2021, was due to the following:

1. Changes in the sub-indices of industrial sections (Table 6):

- The Turnover Index in Mining and quarrying increased by 8.2%.
- The Turnover Index in Manufacturing increased by 0.5%.

2. Changes in the sub-indices in domestic and non-domestic market:

- The Turnover Index in Industry in domestic market increased by 3.4% (Table 7).
- The Turnover Index in Industry in non-domestic market decreased by 3.3% (Table 8).

Table 1. Annual rates of change of the Turnover Index in Industry: Total Market

Base year: 2015=100.0

Code	Division	Weights	April			Rate of change (%)	
			2021*	2020*	2019	2021/2020	2020/2019
OVERALL INDEX			121.72	79.79	124.28	52.5	-35.8
B	MINING AND QUARRYING	100.00	117.90	87.26	127.55	35.1	-31.6
05-06-09	Mining of coal and lignite - Extraction of crude petroleum and natural gas - Mining support service activities	21.19	89.58	27.41	213.30	226.8	-87.1
07	Mining of metal ores	17.56	154.75	166.40	131.73	-7.0	26.3
08	Other mining and quarrying products	61.25	117.13	85.27	96.69	37.4	-11.8
C	MANUFACTURING	100.00	121.77	79.69	124.24	52.8	-35.9
10	Food	23.39	115.89	96.87	108.75	19.6	-10.9
11	Beverages	3.57	113.47	65.68	131.22	72.8	-49.9
12	Tobacco products	1.19	165.89	125.25	115.88	32.4	8.1
13	Textiles	1.28	132.75	69.82	122.53	90.1	-43.0
14	Wearing apparel	1.80	78.19	25.28	87.46	209.3	-71.1
15	Leather and related products	0.34	97.97	22.01	117.11	345.0	-81.2
16	Wood and products of wood and cork, except furniture	0.72	112.50	71.56	112.97	57.2	-36.7
17	Paper and paper products	2.44	121.39	106.04	115.19	14.5	-7.9
18	Printing and reproduction of recorded products	1.17	98.75	79.61	97.82	24.0	-18.6
19	Coke and refined petroleum products	28.73	96.30	41.36	141.56	132.8	-70.8
20	Chemicals and chemical products	4.43	155.20	119.60	135.13	29.8	-11.5
21	Basic pharmaceutical products and pharmaceutical preparations	3.67	202.04	173.45	144.97	16.5	19.6
22	Rubber and plastic products	3.47	141.05	97.40	106.70	44.8	-8.7
23	Other non-metallic mineral products	3.31	130.17	68.86	123.82	89.0	-44.4
24	Basic metals	7.19	151.02	108.06	132.72	39.8	-18.6
25	Fabricated metal products, except machinery and equipment	4.51	121.91	75.11	101.36	62.3	-25.9
26	Computers, electronic and optical products	0.78	200.96	155.78	165.54	29.0	-5.9
27	Electrical equipment	2.65	191.66	85.22	123.36	124.9	-30.9
28	Machinery and equipment n.e.c.	1.56	133.78	92.09	110.77	45.3	-16.9
29	Motor vehicles, trailers and semi-trailers	0.23	122.95	65.09	94.09	88.9	-30.8
30	Other transport equipment	0.52	86.23	54.91	99.60	57.0	-44.9
31	Furniture	0.97	120.60	55.11	143.09	118.9	-61.5
32	Other manufacturing	0.66	103.14	46.80	112.96	120.4	-58.6
33	Repair and installation of machinery and equipment	1.42	101.39	83.47	96.99	21.5	-13.9
MAIN INDUSTRIAL GROUPINGS							
1	Energy	28.57	96.43	41.31	142.40	133.4	-71.0
2	Intermediate goods	28.29	140.66	95.55	120.38	47.2	-20.6
3	Capital goods	7.00	125.28	84.64	108.12	48.0	-21.7
4	Consumer Durables	1.86	111.01	59.25	113.85	87.4	-48.0
5	Consumer Non-Durables	34.28	127.01	98.98	116.27	28.3	-14.9

* Provisional data

Note: The indices and the percentage changes are rounded up to two and one decimal digits, respectively, when published.

Table 2. Annual rates of change of the Turnover Index in Industry: Domestic Market

Base year: 2015=100.0

Code	Division	Weights	April			Rate of change (%)	
			2021*	2020*	2019	2021/2020	2020/2019
OVERALL INDEX			110.86	74.75	116.66	48.3	-35.9
B	MINING AND QUARRYING	100.00	68.52	57.69	78.20	18.8	-26.2
05-06-09	Mining of coal and lignite - Extraction of crude petroleum and natural gas - Mining support service activities	31.66	15.84	15.36	67.14	3.1	-77.1
07	Mining of metal ores	12.83	68.22	93.98	78.60	-27.4	19.6
08	Other mining and quarrying products	55.50	98.64	73.44	84.42	34.3	-13.0
C	MANUFACTURING	100.00	111.35	74.95	117.10	48.6	-36.0
10	Food	28.50	107.48	88.95	105.12	20.8	-15.4
11	Beverages	4.86	111.56	64.86	132.15	72.0	-50.9
12	Tobacco products	0.51	219.56	162.41	167.15	35.2	-2.8
13	Textiles	1.11	117.51	45.07	119.24	160.7	-62.2
14	Wearing apparel	1.77	80.80	20.33	97.35	297.5	-79.1
15	Leather and related products	0.41	90.23	19.62	116.11	359.8	-83.1
16	Wood and products of wood and cork, except furniture	0.96	103.44	66.74	106.97	55.0	-37.6
17	Paper and paper products	3.12	116.13	100.89	115.21	15.1	-12.4
18	Printing and reproduction of recorded products	1.63	85.73	62.42	92.24	37.3	-32.3
19	Coke and refined petroleum products	24.90	66.19	40.32	124.72	64.2	-67.7
20	Chemicals and chemical products	4.90	153.40	122.89	140.85	24.8	-12.8
21	Basic pharmaceutical products and pharmaceutical preparations	3.85	184.66	140.19	127.27	31.7	10.1
22	Rubber and plastic products	3.31	136.59	86.59	105.71	57.7	-18.1
23	Other non-metallic mineral products	3.31	137.59	71.90	121.40	91.4	-40.8
24	Basic metals	3.49	182.93	97.65	133.45	87.3	-26.8
25	Fabricated metal products, except machinery and equipment	4.25	140.03	80.56	114.77	73.8	-29.8
26	Computers, electronic and optical products	0.40	116.40	60.63	103.96	92.0	-41.7
27	Electrical equipment	2.24	215.39	80.91	127.37	166.2	-36.5
28	Machinery and equipment n.e.c.	1.46	147.45	79.04	109.63	86.5	-27.9
29	Motor vehicles, trailers and semi-trailers	0.27	128.08	65.94	93.56	94.2	-29.5
30	Other transport equipment	0.58	66.81	38.95	80.05	71.5	-51.3
31	Furniture	1.35	110.32	49.04	137.61	124.9	-64.4
32	Other manufacturing	0.88	93.43	43.01	109.96	117.2	-60.9
33	Repair and installation of machinery and equipment	1.92	105.15	86.81	97.40	21.1	-10.9
MAIN INDUSTRIAL GROUPINGS							
1	Energy	24.89	65.69	40.10	124.03	63.8	-67.7
2	Intermediate goods	25.73	141.36	89.07	116.80	58.7	-23.7
3	Capital goods	7.19	128.84	78.33	107.67	64.5	-27.3
4	Consumer Durables	2.31	103.42	48.90	113.41	111.5	-56.9
5	Consumer Non-Durables	39.88	116.56	87.99	113.77	32.5	-22.7

* Provisional data

Note: The indices and the percentage changes are rounded up to two and one decimal digits, respectively, when published.

Table 3. Annual rates of change of the Turnover Index in Industry: Non-Domestic Market

Base year: 2015=100.0

Code	Division	Weights	April			Rate of change (%)	
			2021*	2020*	2019	2021/2020	2020/2019
OVERALL INDEX			143.10	89.71	139.30	59.5	-35.6
B	MINING AND QUARRYING	100.00	182.35	125.85	191.96	44.9	-34.4
05-06-09	Mining of coal and lignite - Extraction of crude petroleum and natural gas - Mining support service activities	7.53	494.39	93.60	1015.61	428.2	-90.8
07	Mining of metal ores	23.74	215.81	217.50	169.22	-0.8	28.5
08	Other mining and quarrying products	68.74	136.63	97.74	109.62	39.8	-10.8
C MANUFACTURING		100.00	142.41	89.08	138.38	59.9	-35.6
10	Food	13.27	151.69	130.56	124.24	16.2	5.1
11	Beverages	1.01	131.71	73.54	122.32	79.1	-39.9
12	Tobacco products	2.53	144.25	110.27	95.21	30.8	15.8
13	Textiles	1.61	153.66	103.79	127.05	48.0	-18.3
14	Wearing apparel	1.86	73.27	34.62	68.81	111.6	-49.7
15	Leather and related products	0.19	131.22	32.30	121.41	306.3	-73.4
16	Wood and products of wood and cork, except furniture	0.24	184.37	109.78	160.60	67.9	-31.6
17	Paper and paper products	1.11	150.65	134.68	115.07	11.9	17.0
18	Printing and reproduction of recorded products	0.26	260.90	293.77	167.33	-11.2	75.6
19	Coke and refined petroleum products	36.32	137.21	42.78	164.46	220.8	-74.0
20	Chemicals and chemical products	3.50	160.17	110.51	119.30	44.9	-7.4
21	Basic pharmaceutical products and pharmaceutical preparations	3.30	242.20	250.31	185.86	-3.2	34.7
22	Rubber and plastic products	3.79	148.77	116.15	108.42	28.1	7.1
23	Other non-metallic mineral products	3.31	115.44	62.83	128.60	83.7	-51.1
24	Basic metals	14.54	135.85	113.01	132.37	20.2	-14.6
25	Fabricated metal products, except machinery and equipment	5.03	91.54	65.98	78.89	38.7	-16.4
26	Computers, electronic and optical products	1.52	244.96	205.29	197.58	19.3	3.9
27	Electrical equipment	3.44	160.99	90.78	118.18	77.3	-23.2
28	Machinery and equipment n.e.c.	1.76	111.33	113.53	112.66	-1.9	0.8
29	Motor vehicles, trailers and semi-trailers	0.14	102.98	61.77	96.15	66.7	-35.8
30	Other transport equipment	0.40	141.55	100.40	155.30	41.0	-35.3
31	Furniture	0.21	251.57	132.34	212.90	90.1	-37.8
32	Other manufacturing	0.22	178.40	76.15	136.26	134.3	-44.1
33	Repair and installation of machinery and equipment	0.43	68.36	54.08	93.37	26.4	-42.1
MAIN INDUSTRIAL GROUPINGS							
1	Energy	35.82	138.51	42.96	167.53	222.4	-74.4
2	Intermediate goods	33.33	139.59	105.39	125.83	32.4	-16.2
3	Capital goods	6.62	117.67	98.14	109.08	19.9	-10.0
4	Consumer Durables	0.98	146.35	107.42	115.91	36.2	-7.3
5	Consumer Non-Durables	23.25	162.30	136.13	124.70	19.2	9.2

* Provisional data

Note: The indices and the percentage changes are rounded up to two and one decimal digits, respectively, when published.

Table 4. Annual rates of change of the Turnover Index in Industry: Eurozone Countries

Base year: 2015=100.0

Code	Sections and main groupings	April			Rate of change (%)	
		2021*	2020*	2019	2021/2020	2020/2019
OVERALL INDEX		155.49	107.87	131.90	44.1	-18.2
INDUSTRIAL SECTIONS						
B	MINING AND QUARRYING	284.74	104.42	325.01	172.7	-67.9
C	MANUFACTURING	152.89	107.94	128.03	41.6	-15.7
MAIN INDUSTRIAL GROUPINGS						
1	Energy	147.04	41.73	137.94	252.4	-69.7
2	Intermediate goods	142.72	112.13	130.26	27.3	-13.9
3	Capital goods	157.98	91.17	129.38	73.3	-29.5
4	Consumer Durables	200.33	97.12	172.21	106.3	-43.6
5	Consumer Non-Durables	174.10	152.01	128.53	14.5	18.3

* Provisional data

Table 5. Annual rates of change of the Turnover Index in Industry: Non-Eurozone Countries

Base year: 2015=100.0

Code	Sections and main groupings	April			Rate of change (%)	
		2021*	2020*	2019	2021/2020	2020/2019
OVERALL INDEX		136.51	80.06	143.23	70.5	-44.1
INDUSTRIAL SECTIONS						
B	MINING AND QUARRYING	115.14	139.92	104.61	-17.7	33.8
C	MANUFACTURING	136.86	79.09	143.86	73.0	-45.0
MAIN INDUSTRIAL GROUPINGS						
1	Energy	136.05	43.31	176.06	214.1	-75.4
2	Intermediate goods	137.55	101.00	122.94	36.2	-17.8
3	Capital goods	104.00	100.50	102.20	3.5	-1.7
4	Consumer Durables	109.07	114.53	77.03	-4.8	48.7
5	Consumer Non-Durables	150.82	120.67	120.98	25.0	-0.3

* Provisional data

Note: The indices and the percentage changes are rounded up to two and one decimal digits, respectively, when published.

Table 6. Monthly rate of change of the Turnover Index in Industry: Total Market

Base year: 2015=100.0

Code	Sections and main groupings	April 2021*	March 2021**	Rate of change (%) Apr. 2021/ Mar. 2021
OVERALL INDEX		121.72	120.94	0.6
INDUSTRIAL SECTIONS				
B	MINING AND QUARRYING	117.90	108.96	8.2
C	MANUFACTURING	121.77	121.10	0.5
MAIN INDUSTRIAL GROUPINGS				
1	Energy	96.43	106.86	-9.8
2	Intermediate goods	140.66	142.62	-1.4
3	Capital goods	125.28	121.69	2.9
4	Consumer Durables	111.01	101.51	9.4
5	Consumer Non-Durables	127.01	115.69	9.8

Table 7. Monthly rate of change of the Turnover Index in Industry: Domestic Market

Base year: 2015=100.0

Code	Sections and main groupings	April 2021*	March 2021**	Rate of change (%) Apr. 2021/ Mar. 2021
OVERALL INDEX		110.86	107.24	3.4
INDUSTRIAL SECTIONS				
B	MINING AND QUARRYING	68.52	74.76	-8.3
C	MANUFACTURING	111.35	107.62	3.5
MAIN INDUSTRIAL GROUPINGS				
1	Energy	65.69	72.48	-9.4
2	Intermediate goods	141.36	141.44	-0.1
3	Capital goods	128.84	124.75	3.3
4	Consumer Durables	103.42	89.92	15.0
5	Consumer Non-Durables	116.56	104.72	11.3

Table 8. Monthly rate of change of the Turnover Index in Industry: Non-Domestic Market

Base year: 2015=100.0

Code	Sections and main groupings	April 2021*	March 2021**	Rate of change (%) Apr. 2021/ Mar. 2021
OVERALL INDEX		143.10	147.93	-3.3
INDUSTRIAL SECTIONS				
B	MINING AND QUARRYING	182.35	153.60	18.7
C	MANUFACTURING	142.41	147.83	-3.7
MAIN INDUSTRIAL GROUPINGS				
1	Energy	138.51	153.92	-10.0
2	Intermediate goods	139.59	144.42	-3.3
3	Capital goods	117.67	115.15	2.2
4	Consumer Durables	146.35	155.50	-5.9
5	Consumer Non-Durables	162.30	152.74	6.3

* Provisional data ** Revised data

Note: The indices and the percentage changes are rounded up to two and one decimal digits, respectively, when published.

Table 9. Monthly rate of change of the Turnover Index in Industry: Eurozone Countries

Base year: 2015=100.0

Code	Sections and main groupings	April 2021*	March 2021**	Rate of change (%) Apr. 2021/ Mar. 2021
OVERALL INDEX		155.49	146.98	5.8
INDUSTRIAL SECTIONS				
B	MINING AND QUARRYING	284.74	116.49	144.4
C	MANUFACTURING	152.89	147.59	3.6
MAIN INDUSTRIAL GROUPINGS				
1	Energy	147.04	121.30	21.2
2	Intermediate goods	142.72	148.11	-3.6
3	Capital goods	157.98	143.68	10.0
4	Consumer Durables	200.33	230.60	-13.1
5	Consumer Non-Durables	174.10	161.18	8.0

* Provisional data ** Revised data

Table 10. Monthly rate of change of the Turnover Index in Industry: Non-Eurozone Countries

Base year: 2015=100.0

Code	Sections and main groupings	April 2021*	March 2021**	Rate of change (%) Apr. 2021/ Mar. 2021
OVERALL INDEX		136.51	148.43	-8.0
INDUSTRIAL SECTIONS				
B	MINING AND QUARRYING	115.14	177.96	-35.3
C	MANUFACTURING	136.86	147.96	-7.5
MAIN INDUSTRIAL GROUPINGS				
1	Energy	136.05	163.31	-16.7
2	Intermediate goods	137.55	142.02	-3.1
3	Capital goods	104.00	105.47	-1.4
4	Consumer Durables	109.07	103.63	5.3
5	Consumer Non-Durables	150.82	144.53	4.4

* Provisional data ** Revised data

Note: The indices and the percentage changes are rounded up to two and one decimal digits, respectively, when published.

Table 11. Evolution of the Turnover Index in Industry (y-o-y changes): Total Market

Base year: 2015=100.0

Year and month	Overall Index (Total Market)		Turnover Index in Industry in Domestic Market		Turnover Index in Industry in Non-Domestic Market	
	Index	Annual rate of change (%)	Index	Annual rate of change (%)	Index	Annual rate of change (%)
2020*:						
4	79.79	-35.8	74.75	-35.9	89.71	-35.6
5	87.00	-30.6	85.16	-28.8	90.61	-33.7
6	110.84	-3.7	108.89	-2.2	114.68	-6.3
7	110.88	-16.3	107.87	-18.1	116.81	-12.9
8	87.36	-15.0	86.44	-18.7	89.18	-6.8
9	103.35	-10.5	100.76	-8.8	108.47	-13.5
10	97.97	-14.0	96.37	-13.4	101.12	-14.9
11	103.26	-2.5	99.20	-4.9	111.25	1.9
12	117.58	-3.6	115.10	-2.2	122.45	-6.1
2021*:						
1	87.17	-12.2	80.89	-16.5	99.53	-4.3
2	101.34	-2.5	93.04	-5.3	117.68	2.3
3	120.94	18.5	107.24	10.4	147.93	32.4
4	121.72	52.5	110.86	48.3	143.10	59.5

*Provisional data

Table 12. Evolution of the Turnover Index in Industry (y-o-y changes): Non-Domestic Market

Base year: 2015=100.0

Year and month	Overall Index (Non-Domestic Market)		Turnover Index in Industry in Eurozone Countries		Turnover Index in Industry in Non-Eurozone Countries	
	Index	Annual rate of change (%)	Index	Annual rate of change (%)	Index	Annual rate of change (%)
2020*:						
4	89.71	-35.6	107.87	-18.2	80.06	-44.1
5	90.61	-33.7	106.04	-23.2	82.41	-39.3
6	114.68	-6.3	132.86	-3.7	105.02	-7.9
7	116.81	-12.9	120.84	-5.7	114.67	-16.5
8	89.18	-6.8	91.33	-0.4	88.05	-9.9
9	108.47	-13.5	112.26	-7.1	106.46	-16.7
10	101.12	-14.9	105.89	-7.3	98.59	-18.7
11	111.25	1.9	112.54	-12.6	110.56	12.1
12	122.45	-6.1	109.21	-11.5	129.49	-3.5
2021*:						
1	99.53	-4.3	108.14	-6.8	94.95	-2.7
2	117.68	2.3	129.16	8.0	111.57	-0.9
3	147.93	32.4	146.98	10.7	148.43	47.5
4	143.10	59.5	155.49	44.1	136.51	70.5

*Provisional data

Note: The indices and the percentage changes are rounded up to two and one decimal digits, respectively, when published.

Table 13. Average indices and rates of change (%) of the 12-month periods of Turnover Index in Industry: Total Market
Base year: 2015=100.0

Code	Division	Average Indices of 12-month periods			Rate of change (%)	
		May 2020- Apr. 2021*	May 2019- Apr. 2020*	May 2018- Apr. 2019	2021/2020	2020/2019
OVERALL INDEX		104.12	109.82	115.82	-5.2	-5.2
B	MINING AND QUARRYING	102.12	104.37	108.05	-2.2	-3.4
05-06-09	Mining of coal and lignite - Extraction of crude petroleum and natural gas - Mining support service activities	30.76	62.51	101.16	-50.8	-38.2
07	Mining of metal ores	186.04	170.34	142.58	9.2	19.5
08	Other mining and quarrying products	102.75	99.94	100.53	2.8	-0.6
C	MANUFACTURING	104.14	109.90	115.92	-5.2	-5.2
10	Food	104.29	104.97	102.40	-0.6	2.5
11	Beverages	100.47	110.09	115.32	-8.7	-4.5
12	Tobacco products	140.04	130.17	123.30	7.6	5.6
13	Textiles	104.82	102.45	105.49	2.3	-2.9
14	Wearing apparel	65.43	84.97	95.77	-23.0	-11.3
15	Leather and related products	52.60	76.82	87.59	-31.5	-12.3
16	Wood and products of wood and cork, except furniture	103.45	105.86	104.89	-2.3	0.9
17	Paper and paper products	111.45	116.71	113.31	-4.5	3.0
18	Printing and reproduction of recorded products	88.78	94.54	96.33	-6.1	-1.9
19	Coke and refined petroleum products	81.70	107.39	130.25	-23.9	-17.6
20	Chemicals and chemical products	123.97	118.20	113.71	4.9	4.0
21	Basic pharmaceutical products and pharmaceutical preparations	172.49	150.22	127.08	14.8	18.2
22	Rubber and plastic products	115.78	107.22	103.80	8.0	3.3
23	Other non-metallic mineral products	108.62	106.19	109.47	2.3	-3.0
24	Basic metals	128.07	122.58	137.87	4.5	-11.1
25	Fabricated metal products, except machinery and equipment	104.18	98.44	101.40	5.8	-2.9
26	Computers, electronic and optical products	164.32	169.01	135.13	-2.8	25.1
27	Electrical equipment	143.99	124.76	119.18	15.4	4.7
28	Machinery and equipment n.e.c.	111.30	107.89	106.06	3.2	1.7
29	Motor vehicles, trailers and semi-trailers	107.82	116.23	95.54	-7.2	21.7
30	Other transport equipment	65.39	56.97	69.99	14.8	-18.6
31	Furniture	107.41	108.17	113.52	-0.7	-4.7
32	Other manufacturing	91.95	98.77	100.88	-6.9	-2.1
33	Repair and installation of machinery and equipment	99.45	97.45	92.62	2.1	5.2
MAIN INDUSTRIAL GROUPINGS						
1	Energy	81.37	107.14	130.06	-24.1	-17.6
2	Intermediate goods	118.38	113.33	115.98	4.5	-2.3
3	Capital goods	107.94	104.47	101.41	3.3	3.0
4	Consumer Durables	102.30	102.85	104.25	-0.5	-1.3
5	Consumer Non-Durables	110.62	110.64	107.38	0.0	3.0

*Provisional data

Note: The indices and the percentage changes are rounded up to two and one decimal digits, respectively, when published.

METHODOLOGICAL NOTES

Generally	The Industrial Turnover Index is an indicator of an enterprise's business cycle showing the monthly evolution of the market of goods and services in industry. The first compilation of the Turnover Index was completed by the Hellenic Statistical Authority in 2006, with base year 2000=100.0 and is compiled from 2000 onwards.
Purpose of the index	The purpose of this index is to measure the monthly activity of the industrial sector in terms of value. Turnover comprises the totals invoiced by the observation units during the reference period and corresponds to the market sales of goods or services supplied to third parties. The purposes and the characteristics of the Turnover Index apply, as well, to the indices for the distinction between domestic and non-domestic turnover.
Legal Framework	The compilation and publication of the Turnover Index is based on the framework of the implementation of Council Regulation (EC) No 1165/1998 concerning short-term statistics (STS-R), as well as Regulation (EC) No 1158/2005 of the European Parliament and of the Council amending Council Regulation (EC) No 1165/1998. Furthermore, this index is governed by Regulation (EC) No 1893/2006 of the European Parliament and of the Council, by Commission Regulation (EC) No 656/2007, by Regulation (EC) No 451/2008 of the Council, by Regulation (EU) No 2019/2152 of the European Parliament and of the Council on European business statistics, as well as Commission Implementing Regulation (EU) No 2020/1197 laying down technical specifications and arrangements pursuant to Regulation (EU) No 2019/2152.
Reference period	Month.
Base year	2015=100.0.
Revision	The latest revision of the Turnover Index in Industry (base year 2015=100.0) took place in the framework of Council Regulation (EC) No 1165/1998 concerning short-term statistics. In accordance with this regulation the index is revised every five years, in years ending in 0 or 5.
Statistical classifications	At the level of classes of economic activities, the statistical classification of economic activities NACE Rev. 2 of EU was used (Regulation No 1893/2006), while at the level of main industrial groupings, the allocation of two-digit and three-digit NACE Rev. 2 headings to categories of aggregate classification was used, in accordance with Commission Regulation No 656/2007.
Geographical coverage	The index covers the whole Country.
Coverage of economic activities	The Turnover Index in Industry is compiled for all activities listed in Sections B (mining and quarrying) and C (manufacturing) of the NACE Rev. 2 statistical classification.
Computation of the Index	The Turnover Index in Industry is a fixed base index. This index is calculated at a first stage at the four-digit level of economic activity and subsequently, with the implementation of appropriate weighting coefficients, the index is calculated at higher levels (three-level and two-level of economic activity) as well as at the level of Main Industrial Groupings (MIGs).
Data collection and processing in the context of the COVID-19 pandemic	The compilation of the indices was mainly based on data collected by the enterprises (via web-based application, email), as well as data from administrative sources. For April 2021 there was no significant change in the data collection compared to previous reference months.
Publication of data	The Turnover Index in Industry (2015=100.0) is released since August 2019 with June 2019 as first reference month. Data with base year 2015=100.0 are available from January 2000 onwards.
References	More information about the methodology concerning the compilation and calculation of the index and for the time series is available on the website of the Hellenic Statistical Authority (ELSTAT) (http://www.statistics.gr/en/statistics/-/publication/DKT24/).