



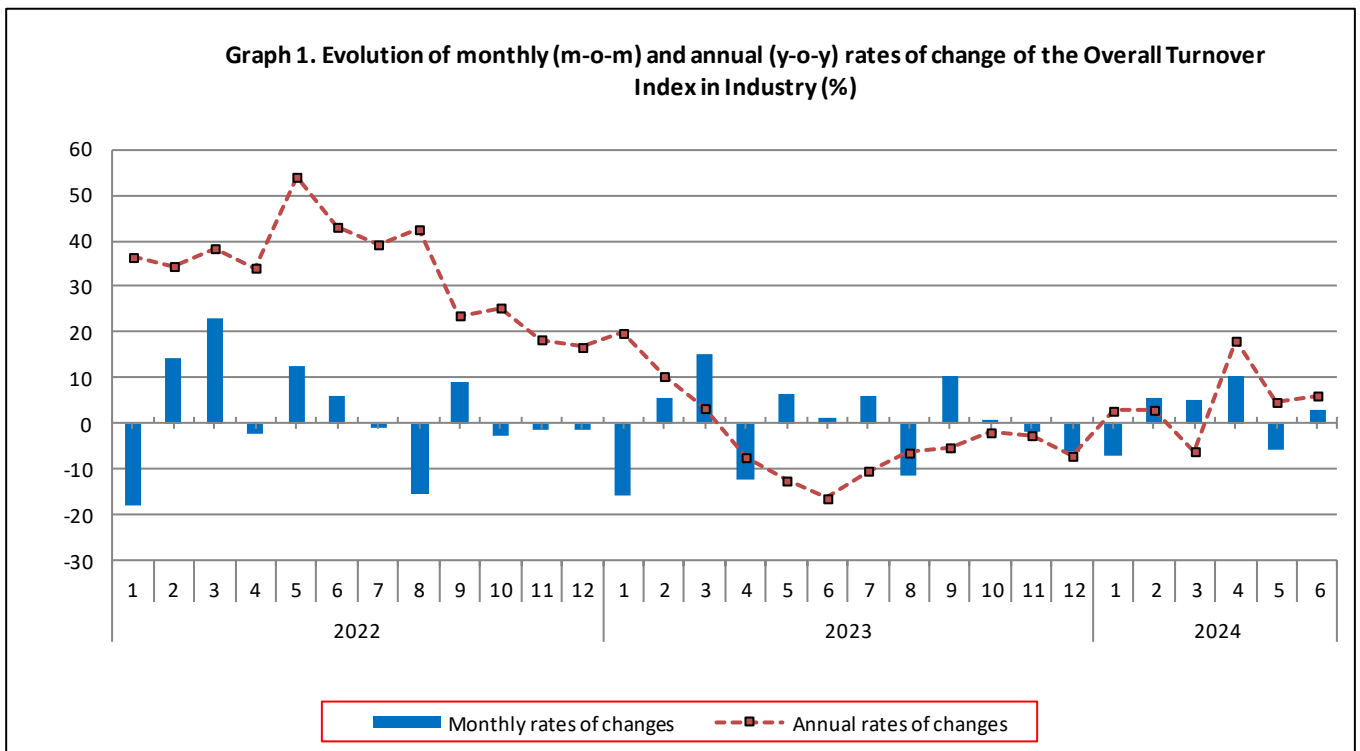
TURNOVER INDEX IN INDUSTRY: June 2024, y-o-y increase of 6.1%

The Hellenic Statistical Authority announces the Turnover Index in Industry with base year 2015=100.0 for June 2024, the evolution of which on the basis of provisional data, is as follows:

The Overall Turnover Index in Industry (both Domestic and Non-Domestic Market) in June 2024 recorded an increase of 6.1% compared with the corresponding index of June 2023. The Overall Turnover Index in Industry in June 2023 decreased by 16.4% compared with the corresponding index in June 2022 (Table 1).

The Overall Turnover Index in Industry in June 2024, compared with May 2024, recorded an increase of 2.8% (Table 6).

The average Overall Turnover Index in Industry for the 12-month period from July 2023 to June 2024 decreased by 0.8%, compared with the corresponding index of the 12-month period from July 2022 to June 2023. The average Overall Turnover Index in Industry for the 12-month period from July 2022 to June 2023 increased by 11.2% compared with the corresponding index of the 12-month period from July 2021 to June 2022 (Table 13).



Information on methodological issues:

Division of Business Statistics
Section of Manufacture-Construction Indices and Industrial Products
Head of the Section : Diamantaki Aikaterini
Tel: +30 213 135 2056
E-mail: a.diamantaki@statistics.gr

Information on data provision:

Tel: +30 213 135 2022, 2308, 2310
E-mail: data.dissem@statistics.gr

Evolution of the Overall Turnover Index in Industry in June 2024

I. Annual changes of the Overall Turnover Index in Industry: June 2024 / June 2023

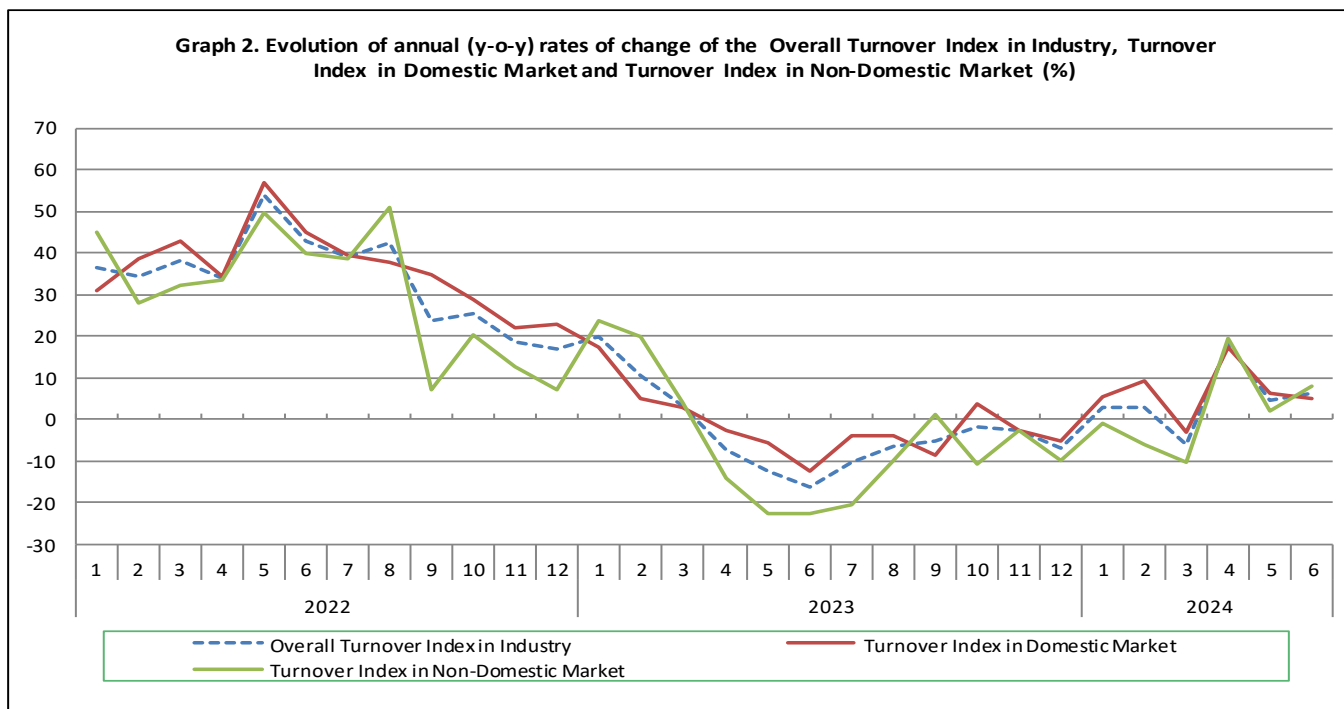
The 6.1% increase in the Overall Turnover Index in Industry in June 2024, compared with the corresponding index in June 2023, was due to the following:

1. Changes in the sub-indices of the industrial sections (Table 1):

- The Turnover Index in Manufacturing increased by 6.4%. The increase was mainly the result of the annual changes of the sub-indices in the following 2-digit divisions: coke and refined petroleum products, motor vehicles, trailers and semi-trailers, other transport equipment, leather and related products, beverages.
- The Turnover Index in Mining and quarrying decreased by 17.8%. The decrease was the result of the annual changes of the sub-indices in the following 2-digit divisions: mining of coal and lignite - extraction of crude petroleum and natural gas - mining support service activities, mining of metal ores.

2. Changes in the sub-indices in Domestic and Non-Domestic Markets:

- The Turnover Index in Industry in Non-Domestic Market increased by 8.1% (Table 3).
- The Turnover Index in Industry in Domestic Market increased by 5.1% (Table 2).



II. Annual changes of the Turnover Index in Industry in Domestic Market: June 2024 / June 2023

The 5.1% increase of the Turnover Index in Industry in Domestic Market in June 2024, compared with June 2023, is due to the annual changes in the sub-indices of the following industrial sections (Table 2):

- The Turnover Index in Mining and quarrying increased by 6.5%. The increase was the result of the annual changes of the sub-indices in the following 2-digit divisions: other mining and quarrying products, mining of metal ores.
- The Turnover Index in Manufacturing increased by 5.1%. The increase was mainly the result of the annual changes of the sub-indices in the following 2-digit divisions: computers, electronic and optical products, motor vehicles, trailers and semi-trailers, coke and refined petroleum products, basic pharmaceutical products and pharmaceutical preparations, beverages.

III. Annual changes of the Turnover Index in Industry in Non-Domestic Market: June 2024 / June 2023

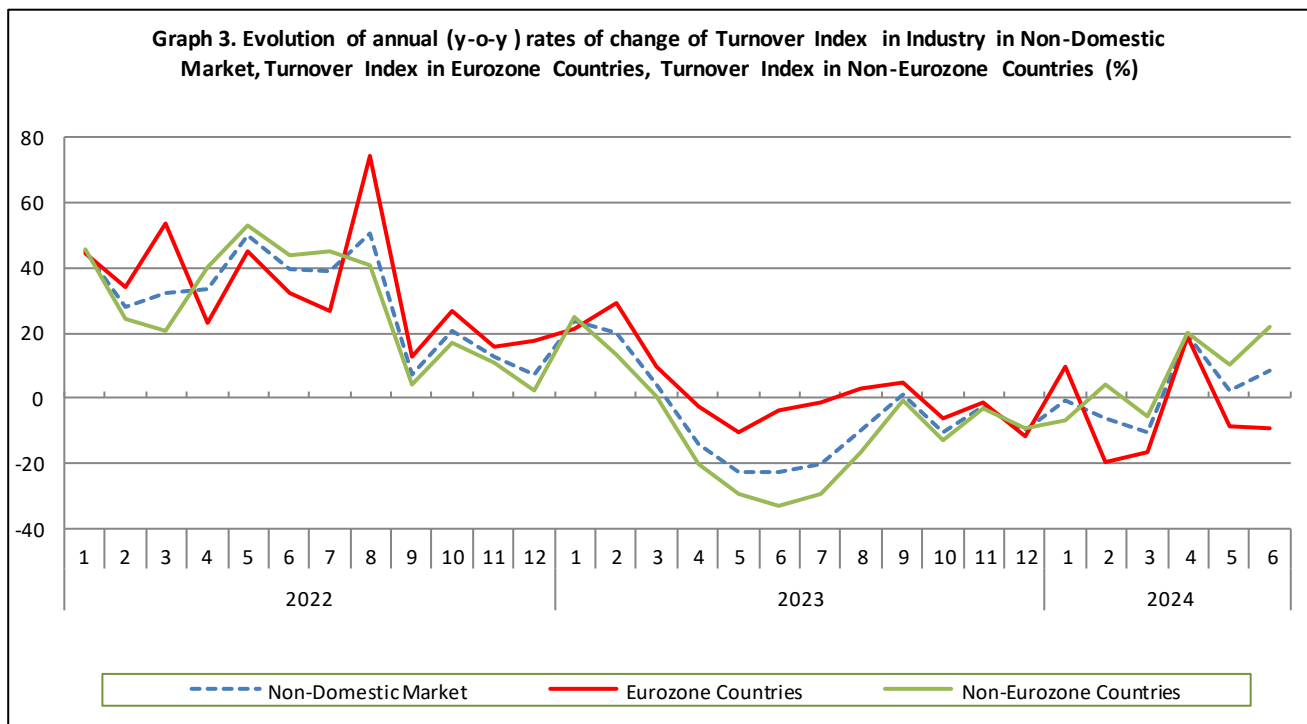
The 8.1% increase of the Turnover Index in Industry in Non-Domestic Market in June 2024, compared with June 2023, was due to the following:

1. Changes in the sub-indices of the industrial sections (Table 3):

- The Turnover Index in Manufacturing increased by 9.1%. The increase was mainly the result of the annual changes of the sub-indices in the following 2-digit divisions: leather and related products, coke and refined petroleum products, other transport equipment, chemicals and chemical products.
- The Turnover Index in Mining and quarrying decreased by 33.3%. The decrease was mainly the result of the annual changes of the sub-indices in the following 2-digit divisions: mining of metal ores, other mining and quarrying products.

2. Changes in the sub-indices in Eurozone and Non-Eurozone countries:

- The Turnover Index in Industry in Non-Eurozone countries increased by 21.8% (Table 5).
- The Turnover Index in Industry in Eurozone countries decreased by 9.3% (Table 4).



IV. Monthly changes of the Overall Turnover Index in Industry: June 2024 / May 2024

The 2.8% increase of the Overall Turnover Index in Industry in June 2024, compared with the corresponding index in May 2024, was due to the following:

1. Changes in the sub-indices of industrial sections (Table 6):

- The Turnover Index in Manufacturing increased by 2.8%.
- The Turnover Index in Mining and quarrying increased by 1.8%.

2. Changes in the sub-indices in Domestic and Non-Domestic Market:

- The Turnover Index in Industry in Non-Domestic Market increased by 3.4% (Table 8).
- The Turnover Index in Industry in Domestic Market increased by 2.5% (Table 7).

Table 1. Annual rates of change of the Turnover Index in Industry: Total Market

Base year: 2015=100.0

Code	Division	Weights	June			Rate of change (%)	
			2024*	2023*	2022	2024/2023	2023/2022
OVERALL INDEX			173.37	163.38	195.40	6.1	-16.4
B	MINING AND QUARRYING	100.00	128.45	156.23	120.41	-17.8	29.7
05-06-09	Mining of coal and lignite - Extraction of crude petroleum and natural gas - Mining support service activities	21.19	6.81	135.42	15.33	-95.0	783.4
07	Mining of metal ores	17.56	243.98	252.52	226.02	-3.4	11.7
08	Other mining and quarrying products	61.25	137.41	135.81	126.48	1.2	7.4
C	MANUFACTURING	100.00	173.98	163.48	196.42	6.4	-16.8
10	Food	23.39	154.76	153.33	142.03	0.9	8.0
11	Beverages	3.57	241.97	222.61	202.89	8.7	9.7
12	Tobacco products	1.19	243.69	243.08	209.40	0.3	16.1
13	Textiles	1.28	133.21	147.60	162.92	-9.7	-9.4
14	Wearing apparel	1.80	73.02	81.20	85.44	-10.1	-5.0
15	Leather and related products	0.34	93.63	77.51	74.34	20.8	4.3
16	Wood and products of wood and cork, except furniture	0.72	138.01	159.34	178.65	-13.4	-10.8
17	Paper and paper products	2.44	155.18	160.31	168.79	-3.2	-5.0
18	Printing and reproduction of recorded products	1.17	129.41	133.64	143.49	-3.2	-6.9
19	Coke and refined petroleum products	28.73	175.55	133.71	251.69	31.3	-46.9
20	Chemicals and chemical products	4.43	167.75	165.21	209.20	1.5	-21.0
21	Basic pharmaceutical products and pharmaceutical preparations	3.67	261.59	252.51	230.92	3.6	9.4
22	Rubber and plastic products	3.47	150.66	161.41	175.36	-6.7	-8.0
23	Other non-metallic mineral products	3.31	182.25	184.18	167.66	-1.0	9.9
24	Basic metals	7.19	194.49	202.85	243.77	-4.1	-16.8
25	Fabricated metal products, except machinery and equipment	4.51	153.61	162.35	159.74	-5.4	1.6
26	Computers, electronic and optical products	0.78	248.75	233.53	259.67	6.5	-10.1
27	Electrical equipment	2.65	241.95	279.41	221.51	-13.4	26.1
28	Machinery and equipment n.e.c.	1.56	138.81	158.03	157.16	-12.2	0.6
29	Motor vehicles, trailers and semi-trailers	0.23	245.07	196.52	196.12	24.7	0.2
30	Other transport equipment	0.52	148.29	122.29	103.02	21.3	18.7
31	Furniture	0.97	190.76	204.23	192.78	-6.6	5.9
32	Other manufacturing	0.66	153.18	163.73	158.95	-6.4	3.0
33	Repair and installation of machinery and equipment	1.42	159.41	147.61	128.83	8.0	14.6
MAIN INDUSTRIAL GROUPINGS							
1	Energy	28.57	174.26	134.01	249.89	30.0	-46.4
2	Intermediate goods	28.29	175.63	182.87	197.33	-4.0	-7.3
3	Capital goods	7.00	158.60	164.41	158.18	-3.5	3.9
4	Consumer Durables	1.86	181.02	187.32	177.49	-3.4	5.5
5	Consumer Non-Durables	34.28	173.36	170.26	156.96	1.8	8.5

* Provisional data

Note: The indices and the percentage changes are rounded up to two and one decimal digits, respectively, when published.

Table 2. Annual rates of change of the Turnover Index in Industry: Domestic Market

Base year: 2015=100.0

Code	Division	Weights	June			Rate of change (%)	
			2024*	2023*	2022	2024/2023	2023/2022
OVERALL INDEX			170.35	162.13	185.42	5.1	-12.6
B	MINING AND QUARRYING	100.00	114.86	107.89	93.55	6.5	15.3
05-06-09	Mining of coal and lignite - Extraction of crude petroleum and natural gas - Mining support service activities	31.66	8.05	32.06	18.12	-74.9	76.9
07	Mining of metal ores	12.83	183.39	109.32	139.51	67.7	-21.6
08	Other mining and quarrying products	55.50	159.93	150.81	125.95	6.0	19.7
C	MANUFACTURING	100.00	170.99	162.76	186.48	5.1	-12.7
10	Food	28.50	138.83	138.63	128.23	0.1	8.1
11	Beverages	4.86	245.15	224.52	202.76	9.2	10.7
12	Tobacco products	0.51	324.04	313.28	308.74	3.4	1.5
13	Textiles	1.11	122.36	143.19	159.98	-14.5	-10.5
14	Wearing apparel	1.77	82.24	91.24	90.77	-9.9	0.5
15	Leather and related products	0.41	71.62	74.47	78.65	-3.8	-5.3
16	Wood and products of wood and cork, except furniture	0.96	131.64	152.54	173.06	-13.7	-11.9
17	Paper and paper products	3.12	144.13	155.49	164.07	-7.3	-5.2
18	Printing and reproduction of recorded products	1.63	111.56	113.61	124.85	-1.8	-9.0
19	Coke and refined petroleum products	24.90	178.48	145.67	258.24	22.5	-43.6
20	Chemicals and chemical products	4.90	154.79	159.02	207.30	-2.7	-23.3
21	Basic pharmaceutical products and pharmaceutical preparations	3.85	246.04	208.27	205.34	18.1	1.4
22	Rubber and plastic products	3.31	154.29	163.32	172.85	-5.5	-5.5
23	Other non-metallic mineral products	3.31	201.66	204.65	169.48	-1.5	20.8
24	Basic metals	3.49	235.36	238.50	266.92	-1.3	-10.6
25	Fabricated metal products, except machinery and equipment	4.25	187.47	187.37	183.65	0.1	2.0
26	Computers, electronic and optical products	0.40	217.39	155.36	150.86	39.9	3.0
27	Electrical equipment	2.24	274.36	321.64	218.08	-14.7	47.5
28	Machinery and equipment n.e.c.	1.46	157.41	171.75	157.12	-8.4	9.3
29	Motor vehicles, trailers and semi-trailers	0.27	276.64	213.09	212.67	29.8	0.2
30	Other transport equipment	0.58	93.26	90.49	60.26	3.1	50.2
31	Furniture	1.35	183.25	195.00	182.22	-6.0	7.0
32	Other manufacturing	0.88	151.43	158.95	157.91	-4.7	0.7
33	Repair and installation of machinery and equipment	1.92	169.38	155.98	133.59	8.6	16.8
MAIN INDUSTRIAL GROUPINGS							
1	Energy	24.89	176.67	144.57	255.73	22.2	-43.5
2	Intermediate goods	25.73	178.21	185.64	187.73	-4.0	-1.1
3	Capital goods	7.19	176.75	172.91	158.12	2.2	9.4
4	Consumer Durables	2.31	152.32	173.61	162.16	-12.3	7.1
5	Consumer Non-Durables	39.88	161.24	155.31	146.32	3.8	6.1

* Provisional data

Note: The indices and the percentage changes are rounded up to two and one decimal digits, respectively, when published.

Table 3. Annual rates of change of the Turnover Index in Industry: Non-Domestic Market

Base year: 2015=100.0

Code	Division	Weights	June			Rate of change (%)	
			2024*	2023*	2022	2024/2023	2023/2022
OVERALL INDEX			179.32	165.84	215.07	8.1	-22.9
B	MINING AND QUARRYING	100.00	146.20	219.31	155.47	-33.3	41.1
05-06-09	Mining of coal and lignite - Extraction of crude petroleum and natural gas - Mining support service activities	7.53	0.00	702.85	0.00	-100.0	-
07	Mining of metal ores	23.74	286.73	353.56	287.06	-18.9	23.2
08	Other mining and quarrying products	68.74	113.68	120.01	127.05	-5.3	-5.5
C MANUFACTURING		100.00	179.90	164.91	216.11	9.1	-23.7
10	Food	13.27	222.56	215.91	200.80	3.1	7.5
11	Beverages	1.01	211.54	204.39	204.17	3.5	0.1
12	Tobacco products	2.53	211.29	214.77	169.34	-1.6	26.8
13	Textiles	1.61	148.10	153.65	166.94	-3.6	-8.0
14	Wearing apparel	1.86	55.65	62.29	75.39	-10.7	-17.4
15	Leather and related products	0.19	188.23	90.56	55.80	107.8	62.3
16	Wood and products of wood and cork, except furniture	0.24	188.52	213.23	223.04	-11.6	-4.4
17	Paper and paper products	1.11	216.63	187.17	195.00	15.7	-4.0
18	Printing and reproduction of recorded products	0.26	351.65	383.16	375.58	-8.2	2.0
19	Coke and refined petroleum products	36.32	171.58	117.45	242.79	46.1	-51.6
20	Chemicals and chemical products	3.50	203.62	182.36	214.46	11.7	-15.0
21	Basic pharmaceutical products and pharmaceutical preparations	3.30	297.54	354.73	290.00	-16.1	22.3
22	Rubber and plastic products	3.79	144.36	158.12	179.72	-8.7	-12.0
23	Other non-metallic mineral products	3.31	143.77	143.59	164.05	0.1	-12.5
24	Basic metals	14.54	175.06	185.90	232.76	-5.8	-20.1
25	Fabricated metal products, except machinery and equipment	5.03	96.89	120.44	119.68	-19.6	0.6
26	Computers, electronic and optical products	1.52	265.06	274.21	316.29	-3.3	-13.3
27	Electrical equipment	3.44	200.07	224.85	225.95	-11.0	-0.5
28	Machinery and equipment n.e.c.	1.76	108.27	135.48	157.22	-20.1	-13.8
29	Motor vehicles, trailers and semi-trailers	0.14	122.15	131.99	131.68	-7.5	0.2
30	Other transport equipment	0.40	305.10	212.91	224.86	43.3	-5.3
31	Furniture	0.21	286.35	321.83	327.38	-11.0	-1.7
32	Other manufacturing	0.22	166.74	200.81	166.96	-17.0	20.3
33	Repair and installation of machinery and equipment	0.43	71.84	74.06	87.02	-3.0	-14.9
MAIN INDUSTRIAL GROUPINGS							
1	Energy	35.82	170.96	119.57	241.91	43.0	-50.6
2	Intermediate goods	33.33	171.73	178.65	211.94	-3.9	-15.7
3	Capital goods	6.62	119.79	146.22	158.31	-18.1	-7.6
4	Consumer Durables	0.98	314.59	251.13	248.87	25.3	0.9
5	Consumer Non-Durables	23.25	214.33	220.78	192.93	-2.9	14.4

* Provisional data

Note: The indices and the percentage changes are rounded up to two and one decimal digits, respectively, when published.

Table 4. Annual rates of change of the Turnover Index in Industry: Eurozone Countries

Base year: 2015=100.0

Code	Sections and main groupings	June			Rate of change (%)	
		2024*	2023*	2022	2024/2023	2023/2022
OVERALL INDEX		191.09	210.60	218.74	-9.3	-3.7
INDUSTRIAL SECTIONS						
B	MINING AND QUARRYING	116.21	309.94	238.70	-62.5	29.8
C	MANUFACTURING	192.59	208.61	218.34	-7.7	-4.5
MAIN INDUSTRIAL GROUPINGS						
1	Energy	141.97	187.42	197.74	-24.2	-5.2
2	Intermediate goods	174.83	190.36	233.12	-8.2	-18.3
3	Capital goods	172.16	219.22	202.84	-21.5	8.1
4	Consumer Durables	515.51	447.21	363.74	15.3	22.9
5	Consumer Non-Durables	235.53	240.50	214.19	-2.1	12.3

* Provisional data

Table 5. Annual rates of change of the Turnover Index in Industry: Non-Eurozone Countries

Base year: 2015=100.0

Code	Sections and main groupings	June			Rate of change (%)	
		2024*	2023*	2022	2024/2023	2023/2022
OVERALL INDEX		173.06	142.06	213.11	21.8	-33.3
INDUSTRIAL SECTIONS						
B	MINING AND QUARRYING	165.89	159.82	100.83	3.8	58.5
C	MANUFACTURING	173.17	141.77	214.93	22.2	-34.0
MAIN INDUSTRIAL GROUPINGS						
1	Energy	179.32	100.03	254.63	79.3	-60.7
2	Intermediate goods	169.71	171.02	198.13	-0.8	-13.7
3	Capital goods	102.04	121.47	143.21	-16.0	-15.2
4	Consumer Durables	175.84	115.73	169.55	51.9	-31.7
5	Consumer Non-Durables	193.70	201.60	172.24	-3.9	17.0

* Provisional data

Note: The indices and the percentage changes are rounded up to two and one decimal digits, respectively, when published.

Table 6. Monthly rate of change of the Turnover Index in Industry: Total Market

Base year: 2015=100.0

Code	Sections and main groupings	June 2024*	May 2024**	Rate of change (%) June 2024/May 2024
OVERALL INDEX		173.37	168.66	2.8
INDUSTRIAL SECTIONS				
B	MINING AND QUARRYING	128.45	126.18	1.8
C	MANUFACTURING	173.98	169.23	2.8
MAIN INDUSTRIAL GROUPINGS				
1	Energy	174.26	173.18	0.6
2	Intermediate goods	175.63	169.82	3.4
3	Capital goods	158.60	141.90	11.8
4	Consumer Durables	181.02	181.41	-0.2
5	Consumer Non-Durables	173.36	168.71	2.8

Table 7. Monthly rate of change of the Turnover Index in Industry: Domestic Market

Base year: 2015=100.0

Code	Sections and main groupings	June 2024*	May 2024**	Rate of change (%) June 2024/May 2024
OVERALL INDEX		170.35	166.20	2.5
INDUSTRIAL SECTIONS				
B	MINING AND QUARRYING	114.86	121.84	-5.7
C	MANUFACTURING	170.99	166.71	2.6
MAIN INDUSTRIAL GROUPINGS				
1	Energy	176.67	179.35	-1.5
2	Intermediate goods	178.21	174.27	2.3
3	Capital goods	176.75	157.89	11.9
4	Consumer Durables	152.32	143.95	5.8
5	Consumer Non-Durables	161.24	155.58	3.6

Table 8. Monthly rate of change of the Turnover Index in Industry: Non-Domestic Market

Base year: 2015=100.0

Code	Sections and main groupings	June 2024*	May 2024**	Rate of change (%) June 2024/May 2024
OVERALL INDEX		179.32	173.50	3.4
INDUSTRIAL SECTIONS				
B	MINING AND QUARRYING	146.20	131.85	10.9
C	MANUFACTURING	179.90	174.23	3.3
MAIN INDUSTRIAL GROUPINGS				
1	Energy	170.96	164.73	3.8
2	Intermediate goods	171.73	163.06	5.3
3	Capital goods	119.79	107.71	11.2
4	Consumer Durables	314.59	355.78	-11.6
5	Consumer Non-Durables	214.33	213.07	0.6

* Provisional data ** Revised data

Note: The indices and the percentage changes are rounded up to two and one decimal digits, respectively, when published.

Table 9. Monthly rate of change of the Turnover Index in Industry: Eurozone Countries

Base year: 2015=100.0

Code	Sections and main groupings	June 2024*	May 2024**	Rate of change (%) June 2024/May 2024
OVERALL INDEX		191.09	191.83	-0.4
INDUSTRIAL SECTIONS				
B	MINING AND QUARRYING	116.21	124.16	-6.4
C	MANUFACTURING	192.59	193.18	-0.3
MAIN INDUSTRIAL GROUPINGS				
1	Energy	141.97	147.64	-3.8
2	Intermediate goods	174.83	177.84	-1.7
3	Capital goods	172.16	147.85	16.4
4	Consumer Durables	515.51	522.53	-1.3
5	Consumer Non-Durables	235.53	233.64	0.8

* Provisional data ** Revised data

Table 10. Monthly rate of change of the Turnover Index in Industry: Non-Eurozone Countries

Base year: 2015=100.0

Code	Sections and main groupings	June 2024*	May 2024**	Rate of change (%) June 2024/May 2024
OVERALL INDEX		173.06	163.76	5.7
INDUSTRIAL SECTIONS				
B	MINING AND QUARRYING	165.89	136.89	21.2
C	MANUFACTURING	173.17	164.20	5.5
MAIN INDUSTRIAL GROUPINGS				
1	Energy	179.32	169.65	5.7
2	Intermediate goods	169.71	153.42	10.6
3	Capital goods	102.04	94.10	8.4
4	Consumer Durables	175.84	240.63	-26.9
5	Consumer Non-Durables	193.70	193.05	0.3

* Provisional data ** Revised data

Note: The indices and the percentage changes are rounded up to two and one decimal digits, respectively, when published.

Table 11. Evolution of the Turnover Index in Industry (y-o-y changes): Total Market

Base year: 2015=100.0

Year and month	Overall Index (Total Market)		Turnover Index in Industry in Domestic Market		Turnover Index in Industry in Non-Domestic Market	
	Index	Annual rate of change (%)	Index	Annual rate of change (%)	Index	Annual rate of change (%)
2023*: 6	163.38	-16.4	162.13	-12.6	165.84	-22.9
7	173.48	-10.3	171.99	-4.0	176.42	-20.4
8	153.95	-6.4	146.93	-4.2	167.78	-10.0
9	169.65	-5.2	162.08	-8.6	184.55	1.1
10	170.88	-1.9	167.88	3.5	176.80	-10.7
11	167.40	-2.6	158.44	-2.5	185.04	-2.6
12	157.11	-7.1	154.80	-5.4	161.67	-10.1
2024*: 1	146.30	2.8	130.61	5.5	177.21	-0.9
2	154.59	3.0	147.13	9.2	169.29	-6.2
3	162.23	-6.1	151.77	-3.3	182.84	-10.3
4	178.88	18.1	170.55	17.4	195.30	19.3
5	168.66	4.7	166.20	6.1	173.50	2.1
6	173.37	6.1	170.35	5.1	179.32	8.1

*Provisional data

Table 12. Evolution of the Turnover Index in Industry (y-o-y changes): Non-Domestic Market

Base year: 2015=100.0

Year and month	Overall Index (Non-Domestic Market)		Turnover Index in Industry in Eurozone Countries		Turnover Index in Industry in Non-Eurozone Countries	
	Index	Annual rate of change (%)	Index	Annual rate of change (%)	Index	Annual rate of change (%)
2023*: 6	165.84	-22.9	210.60	-3.7	142.06	-33.3
7	176.42	-20.4	205.91	-1.4	160.74	-29.6
8	167.78	-10.0	192.58	3.1	154.60	-17.0
9	184.55	1.1	192.66	4.9	180.24	-0.9
10	176.80	-10.7	202.62	-6.3	163.07	-13.3
11	185.04	-2.6	195.90	-1.5	179.27	-3.2
12	161.67	-10.1	150.07	-11.9	167.83	-9.2
2024*: 1	177.21	-0.9	208.24	9.5	160.72	-7.0
2	169.29	-6.2	179.47	-19.9	163.88	4.2
3	182.84	-10.3	206.85	-16.7	170.08	-5.6
4	195.30	19.3	221.10	18.7	181.58	19.7
5	173.50	2.1	191.83	-8.8	163.76	10.4
6	179.32	8.1	191.09	-9.3	173.06	21.8

*Provisional data

Note: The indices and the percentage changes are rounded up to two and one decimal digits, respectively, when published.

Table 13. Average indices and rates of change (%) of the 12-month periods of Turnover Index in Industry: Total Market
Base year: 2015=100.0

Code	Division	Average Indices of 12-month periods			Rate of change (%)	
		July 2023*- June 2024*	July 2022- June 2023*	July 2021- June 2022	2024/2023	2023/2022
OVERALL INDEX		164.71	166.11	149.43	-0.8	11.2
B	MINING AND QUARRYING	121.84	117.04	102.76	4.1	13.9
05-06-09	Mining of coal and lignite - Extraction of crude petroleum and natural gas - Mining support service activities	31.90	38.18	24.11	-16.4	58.3
07	Mining of metal ores	200.87	183.73	162.78	9.3	12.9
08	Other mining and quarrying products	130.29	125.20	112.75	4.1	11.0
C	MANUFACTURING	165.29	166.77	150.06	-0.9	11.1
10	Food	147.84	143.11	124.64	3.3	14.8
11	Beverages	163.16	147.30	128.88	10.8	14.3
12	Tobacco products	229.36	212.92	148.18	7.7	43.7
13	Textiles	120.24	130.35	127.42	-7.8	2.3
14	Wearing apparel	86.54	93.48	90.72	-7.4	3.0
15	Leather and related products	86.44	88.73	76.54	-2.6	15.9
16	Wood and products of wood and cork, except furniture	140.29	142.01	133.71	-1.2	6.2
17	Paper and paper products	145.49	157.65	136.45	-7.7	15.5
18	Printing and reproduction of recorded products	120.61	117.26	110.40	2.9	6.2
19	Coke and refined petroleum products	175.59	183.71	163.51	-4.4	12.4
20	Chemicals and chemical products	162.20	179.05	162.97	-9.4	9.9
21	Basic pharmaceutical products and pharmaceutical preparations	257.07	231.44	198.84	11.1	16.4
22	Rubber and plastic products	145.13	147.65	148.27	-1.7	-0.4
23	Other non-metallic mineral products	174.39	158.35	135.59	10.1	16.8
24	Basic metals	181.63	201.46	205.36	-9.8	-1.9
25	Fabricated metal products, except machinery and equipment	141.49	138.71	133.78	2.0	3.7
26	Computers, electronic and optical products	264.37	253.06	205.45	4.5	23.2
27	Electrical equipment	223.81	228.41	200.11	-2.0	14.1
28	Machinery and equipment n.e.c.	135.13	141.97	133.48	-4.8	6.4
29	Motor vehicles, trailers and semi-trailers	185.36	177.80	160.47	4.3	10.8
30	Other transport equipment	96.37	90.32	85.88	6.7	5.2
31	Furniture	160.97	156.61	142.35	2.8	10.0
32	Other manufacturing	139.36	136.57	123.81	2.0	10.3
33	Repair and installation of machinery and equipment	138.91	124.20	106.27	11.8	16.9
MAIN INDUSTRIAL GROUPINGS						
1	Energy	174.55	182.67	162.48	-4.4	12.4
2	Intermediate goods	164.65	173.53	163.50	-5.1	6.1
3	Capital goods	146.53	144.50	131.78	1.4	9.7
4	Consumer Durables	174.15	159.59	134.12	9.1	19.0
5	Consumer Non-Durables	159.76	150.94	131.37	5.8	14.9

*Provisional data

Note: The indices and the percentage changes are rounded up to two and one decimal digits, respectively, when published.

METHODOLOGICAL NOTES

Generally	The Industrial Turnover Index is an indicator of an enterprise's business cycle showing the monthly evolution of the market of goods and services in industry. The first compilation of the Turnover Index was completed by the Hellenic Statistical Authority in 2006, with base year 2000=100.0 and is compiled from 2000 onwards.
Purpose of the index	The purpose of this index is to measure the monthly activity of the industrial sector in terms of value. Turnover comprises the totals invoiced by the observation units during the reference period and corresponds to the market sales of goods or services supplied to third parties. The purposes and the characteristics of the Turnover Index apply, as well, to the indices for the distinction between domestic and non-domestic turnover.
Legal Framework	The compilation and publication of the Turnover Index is based on the framework of the implementation of Council Regulation (EC) No 1165/1998 concerning short-term statistics (STS-R), as well as Regulation (EC) No 1158/2005 of the European Parliament and of the Council amending Council Regulation (EC) No 1165/1998. Furthermore, this index is governed by Regulation (EC) No 1893/2006 of the European Parliament and of the Council, by Commission Regulation (EC) No 656/2007, by Regulation (EC) No 451/2008 of the Council, by Regulation (EU) No 2019/2152 of the European Parliament and of the Council on European business statistics, as well as Commission Implementing Regulation (EU) No 2020/1197 laying down technical specifications and arrangements pursuant to Regulation (EU) No 2019/2152.
Reference period	Month.
Base year	2015=100.0.
Revision	The latest revision of the Turnover Index in Industry (base year 2015=100.0) took place in the framework of Council Regulation (EC) No 1165/1998 concerning short-term statistics. In accordance with this regulation the index is revised every five years, in years ending in 0 or 5.
Statistical classifications	At the level of classes of economic activities, the statistical classification of economic activities NACE Rev. 2 of EU was used (Regulation No 1893/2006), while at the level of main industrial groupings, the allocation of two-digit and three-digit NACE Rev. 2 headings to categories of aggregate classification was used, in accordance with Commission Regulation No 656/2007.
Geographical coverage	The index covers the whole Country.
Coverage of economic activities	The Turnover Index in Industry is compiled for all activities listed in Sections B (mining and quarrying) and C (manufacturing) of the NACE Rev. 2 statistical classification.
Computation of the Index	The Turnover Index in Industry is a fixed base index. This index is calculated at a first stage at the four-digit level of economic activity and subsequently, with the implementation of appropriate weighting coefficients, the index is calculated at higher levels (three-level and two-level of economic activity) as well as at the level of Main Industrial Groupings (MIGs).
Publication of data	The Turnover Index in Industry (2015=100.0) is released since August 2019 with June 2019 as first reference month. Data with base year 2015=100.0 are available from January 2000 onwards.
References	More information about the methodology concerning the compilation and calculation of the index and for the time series is available on the website of the Hellenic Statistical Authority (ELSTAT) (http://www.statistics.gr/en/statistics/-/publication/DKT24/).