



HELLENIC REPUBLIC  
HELLENIC STATISTICAL AUTHORITY

Piraeus, 5 June 2026

## LABOUR FORCE SURVEY: 1ST QUARTER 2026

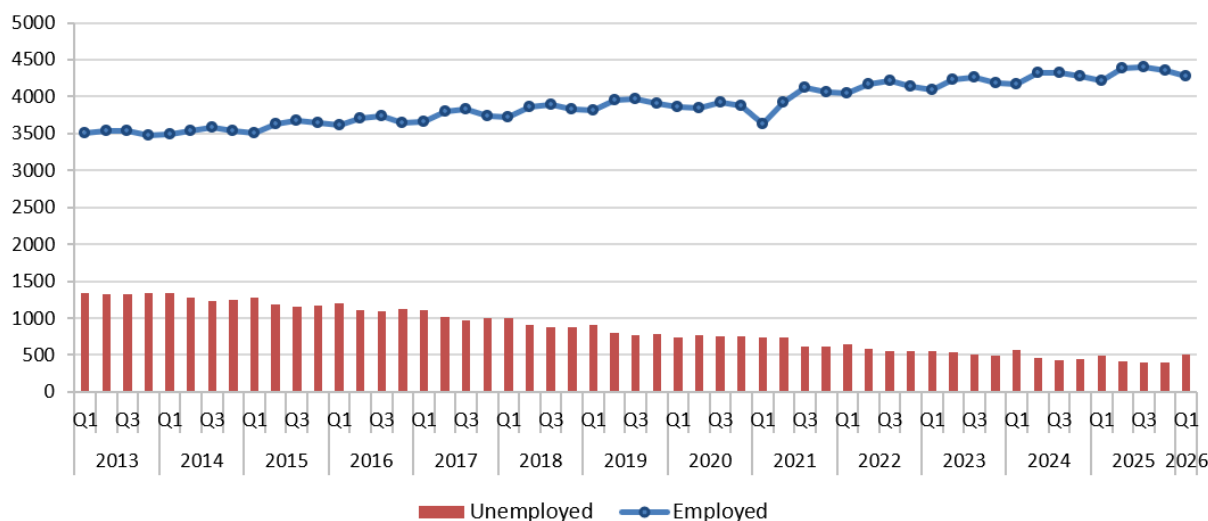
The Hellenic Statistical Authority (ELSTAT) announces the results of the Labour Force Survey for the 1st quarter of 2026.

More specifically, during the 1st quarter of 2026:

- The number of **employed persons** amounted to 4, 272,151, recording a decrease of 1.8% compared to the previous quarter and an increase of 1.3% compared to the same quarter of the previous year (Tables 1, 2).
- The number of **unemployed persons** amounted to 508,401, recording an increase of 28.7% compared to the previous quarter and an increase of 4.2% compared to the same quarter of the previous year (Tables 1, 4). The unemployment rate for the 1st quarter of 2026 was 10.6% (Table 1). The unemployment rate was 8.3% in the previous quarter (2025Q4) and 10.4% in the corresponding quarter of the previous year (2025Q1).
- The number of **persons outside the labour force**, i.e., the persons who are neither working nor looking for a job, amounted to 4,211,638. In particular, persons outside the labour force **under the age of 75**, amounted to 2,958,916. They decreased by 1.4% compared with the previous quarter and by 3.5% compared to the corresponding quarter of the previous year (Tables 1, 5).

**Graph 1. Number of employed and unemployed**

(In thousands)



*It should be noted that the quarterly estimates of the Survey are not subject to seasonal adjustment, while the monthly estimates are seasonally adjusted. Therefore, the average of the seasonally adjusted monthly estimates may differ from the estimate for the corresponding quarter.*

**Information on methodological issues**

Population, Employment and Cost of Living Statistics Division  
Section of Labour Statistics  
Konstantinos Loizos  
Tel: +30 213 135 2173  
E-mail: [k.loizos@statistics.gr](mailto:k.loizos@statistics.gr), [ifs@statistics.gr](mailto:ifs@statistics.gr)

**Information for data provision**

Tel: 213 135 2022  
e-mail: [data.dissem@statistics.gr](mailto:data.dissem@statistics.gr)

## I. EMPLOYMENT STATUS

**Table 1. Employment status by sex, age, Region, educational level, and citizenship <sup>(1)</sup>, 1st quarter 2026**

(In thousands)

		Employed	Unemployed	Persons outside the labour force	Unemployment rate (%)	Labour force rate (%)
	<b>Total<sup>(2)</sup></b>	<b>4,272.2</b>	<b>508.4</b>	<b>4,211.6</b>	<b>10.6</b>	<b>53.2</b>
SEX	Males	2,423.0	208.7	1,716.4	7.9	60.5
	Females	1,849.1	299.7	2,495.2	13.9	46.3
AGE	15 - 19	26.0	14.0	592.1	35.0	6.3
	20 - 24	167.7	52.4	220.8	23.8	49.9
	25 - 29	383.8	80.8	107.8	17.4	81.2
	30 - 44	1,417.5	169.5	210.8	10.7	88.3
	45 - 64	2,134.6	182.5	716.2	7.9	76.4
	65+	142.6	9.3	2,364.0	6.1	6.0
REGION (NUTS 2)	Anatoliki Makedonia & Thraki (Eastern Macedonia and Thrace)	222.4	24.5	256.2	9.9	49.1
	Kentriki Makedonia (Central Macedonia)	729.2	101.0	744.6	12.2	52.7
	Dytiki Makedonia (Western Macedonia)	92.0	12.5	126.5	11.9	45.2
	Ipeiros (Epirus)	123.2	16.8	148.5	12.0	48.5
	Thessalia (Thessaly)	268.7	30.7	312.9	10.3	48.9
	Ionioi Nisoι (Ionian Islands)	69.1	21.4	78.4	23.6	53.6
	Dytiki Ellada (Western Greece)	249.7	37.5	275.3	13.1	51.1
	Stereia Ellada	229.1	15.7	221.7	6.4	52.5
	Attiki (Attica)	1,647.5	144.8	1,385.3	8.1	56.4
	Peloponnissos (Peloponnese)	224.1	25.7	211.7	10.3	54.1
	Voreio Aigaio (Northern Aegean)	79.5	5.1	80.2	6.0	51.4
	Notio Aigaio (Southern Aegean)	93.0	39.7	136.3	29.9	49.3
Kriti (Crete)	244.7	33.0	234.1	11.9	54.3	
EDUCATIONAL LEVEL	Less than primary	15.8	4.1	157.5	20.8	11.2
	Primary education	237.6	45.5	1,097.5	16.1	20.5
	Secondary education	1,986.2	261.5	2,093.1	11.6	51.8
	Post - secondary	389.7	74.5	137.3	16.0	77.2
	Tertiary Education	1,643.0	122.8	595.6	7.0	74.8
CITIZENSHIP	Greek	4,211.4	497.3	4,184.6	10.6	52.9
	Foreign	60.8	11.1	27.1	15.4	72.6

The highest unemployment rates are observed among women, persons aged 15-19 years, in the Region of Notio Aigaio (Southern Aegean), and persons that have completed less than primary education. The highest percentage of labour force is observed among men, persons aged 30-44 years, in the Region of Attiki (Attica), persons that have completed post-secondary education and persons of foreign citizenship (Table 1).

<sup>(1)</sup> The definitions of the characteristics that are presented in Table 1 and the other tables of the press release can be found in the **Explanatory notes**, at the end of the press release, under "Definitions".

<sup>(2)</sup> Any difference between the grand total and the sum of the detailed categories is due to rounding. The educational attainment level is not recorded for persons aged 90+.

## II. CHARACTERISTICS OF EMPLOYED PERSONS

Table 2 presents the number of employed by professional status, occupation, full-time and part-time employment, permanent and temporary job, for the 1st quarter 2026. Furthermore, the table includes the corresponding data for the previous quarter and the same quarter one year ago, as well as the corresponding quarterly and annual rates of change.

**Table 2. Employed persons by professional status, occupation, full-time and part-time job, permanent or temporary job**

(In thousands)

	1st quarter 2026	% of total	4th quarter 2025	1st quarter 2025	Quarterly rate of change (%)	Annual rate of change (%)
<b>Total</b>	<b>4,272.2</b>	<b>100.0</b>	<b>4,352.4</b>	<b>4,216.8</b>	<b>-1.8</b>	<b>1.3</b>
<b>Professional status</b>						
Self-employed with employees	326.3	7.6	330.5	307.8	-1.3	6.0
Self-employed without employees	770.6	18.0	756.7	784.0	1.8	-1.7
Employees	3,072.1	71.9	3,156.2	3,006.3	-2.7	2.2
Family workers	103.2	2.4	108.9	118.7	-5.2	-13.1
<b>Occupation</b>						
Legislators, senior officials and managers	120.1	2.8	129.9	128.1	-7.5	-6.2
Professionals	995.8	23.3	962.0	1,003.7	3.5	-0.8
Technicians and associate professionals	312.5	7.3	317.6	280.0	-1.6	11.6
Clerks	474.5	11.1	504.3	470.2	-5.9	0.9
Service workers and shop and market sale workers	936.7	21.9	981.8	927.7	-4.6	1.0
Skilled agricultural and fishery workers	338.5	7.9	333.6	375.8	1.5	-9.9
Craft and related trade workers	433.2	10.1	430.6	399.8	0.6	8.4
Plant and machine operators and assemblers	291.4	6.8	303.4	297.4	-4.0	-2.0
Elementary occupations	305.2	7.1	320.8	268.0	-4.9	13.9
Other unclassified persons	64.2	1.5	68.5	66.0	-6.3	-2.7
<b>Full-time / part-time job</b>						
Full time	4,049.1	94.8	4,120.7	3,966.1	-1.7	2.1
Part time	223.0	5.2	231.7	250.6	-3.8	-11.0
<b>Employees by permanent - temporary job</b>						
Permanent	2,846.9	92.7	2,874.4	2,775.7	-1.0	2.6
Temporary	225.2	7.3	281.8	230.6	-20.1	-2.3

In the 1st quarter 2026, the majority of the employed are working as employees (71.9%), whereas a significant share is working as self-employed without employees (18.0%).

Part-time employment amounts to 5.2%, recording a decrease by 3.8% compared to the previous quarter and a decrease by 11.0% compared to the corresponding quarter of the previous year. The share of persons with temporary jobs is 7.3%, recording a decrease of 20.1% compared to the previous quarter and a decrease of 2.3% compared to the corresponding quarter of the previous year.

The occupations gathering the largest shares of the employed are *Professionals* (23.3%) and *Service workers and shop and market sale workers* (21.9%). Compared to the previous quarter, the largest increase occurs for *Professionals* (3.5%) whereas the largest decrease is observed in *Legislators, senior officials and managers* (-7.5%). In comparison with the 1st quarter of 2025, the largest increase occurs in *Elementary occupations* (13.9%) whereas the largest decrease is observed in *Skilled agricultural and fishery workers* (-9.9%) (Table 2).

As of the 1<sup>st</sup> quarter 2014, an increase in the share of low skilled non-manual occupations is observed – a trend that is reversed to some extent since 2021 but continues up again after 2023. The share of skilled manual occupations decreases up to 2020 followed by an increase in early 2021 and has since stabilized at the 2014 levels. The share of highly skilled non-manual occupations follows an upward trend with fluctuations since 2015, while the share of elementary occupations is relatively stable showing an increase in the last quarters. The share of workers in agriculture, forestry, animal husbandry and fishing has been declining since 2014, a trend that accelerates from 2024 onwards (Graph 2).

**Graph 2: Percentage of employed by broad categories of occupations**

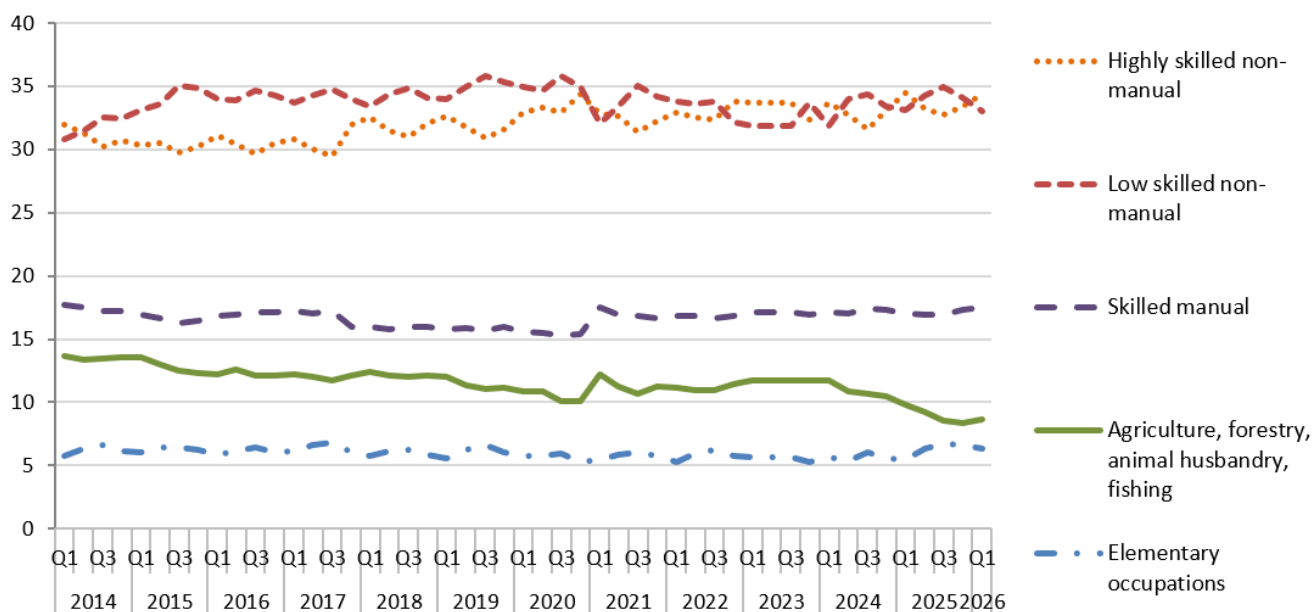


Table 3 presents the number of the employed by section of economic activity in the 1st quarter 2026. Due to the NACE Rev. 2.1 revision, Table 3 does not include historical data, as the numbers are no longer comparable.

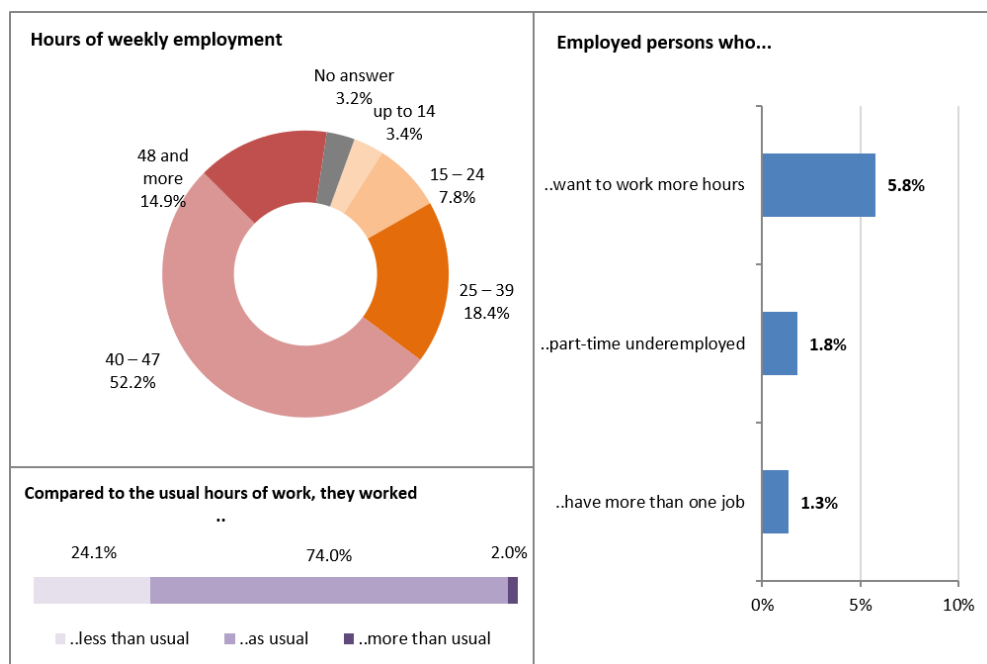
**Table 3. Employed persons by section of economic activity**

*(In thousands)*

	1st quarter 2026	% of total
Agriculture, forestry and fishing	382.1	9.0
Mining and quarrying	4.9	0.1
Manufacturing	435.0	10.2
Electricity, gas, steam and air conditioning supply	43.6	1.0
Water supply; sewage, waste management and remediation activities	40.0	0.9
Construction	190.6	4.5
Wholesale and retail trade	680.7	16.0
Transportation and storage	226.4	5.3
Accommodation and food service activities	332.2	7.8
Publishing, broadcasting, and content production and distribution activities	22.0	0.5
Telecommunication, computer programming, consulting, computing infrastructure and other information service activities	95.5	2.2
Financial and insurance activities	89.6	2.1
Real estate activities	18.5	0.4
Professional, scientific and technical activities	326.6	7.7
Administrative and support service activities	107.6	2.5
Public administration and defense; compulsory social security	359.2	8.4
Education	329.7	7.7
Human health and social work activities	313.5	7.3
Arts, sports and recreation	78.1	1.8
Other service activities	157.4	3.7
Activities of households as employers and undifferentiated goods- and service-producing activities of households for own use	31.2	0.7
Activities of extraterritorial organisations and bodies	2.8	0.1

52.2% of the employed report having worked 40 - 47 hours in the reference week while a significant share (14.9%) report having worked for 48 hours or more. Most of the employed persons (74.0%) worked the usual hours during the reference week. 5.8% of them state that they wish to work more hours, 1.8% are underemployed part-time workers who wish to work more, and they are available to start working more in the next two weeks and 1.3% of the employed report having more than one job (Graph 3).

**Graph 3: Hours worked, existence of a second job, wish to work more hours and search for a job, 1st quarter 2026**



### III. CHARACTERISTICS OF UNEMPLOYED PERSONS

Table 4 presents the number of unemployed by reason for leaving the last job, duration of unemployment, educational level and by registration in a public employment office (DYPA - former OAED) for the 1st quarter 2026. Furthermore, the table includes the corresponding data for the previous quarter and the same quarter one year ago, as well as the quarterly and annual rates of change.

**Table 4. Unemployed, by reason for leaving the last job<sup>(3)</sup>, duration of unemployment, educational level and registration in public employment office**

(In thousands)

	1st quarter 2026	% of total	4th quarter 2025	1st quarter 2025	Quarterly rate of change (%)	Annual rate of change (%)
<b>Total</b>	<b>508.4</b>	<b>100.0</b>	<b>394.9</b>	<b>488.1</b>	<b>28.7</b>	<b>4.2</b>
<b>Reason for leaving the last job</b>						
Never worked in the past	94.5	18.6	73.5	95.9	28.6	-1.5
Dismissed or made redundant	82.0	16.1	79.9	88.8	2.6	-7.7
A job of limited duration that has ended	210.0	41.3	133.5	182.3	57.3	15.2
Other reason	49.7	9.8	49.8	54.5	-0.2	-8.8
Did not report a reason <sup>(3)</sup>	72.2	14.2	58.2	66.6	24.1	8.4
<b>Duration of unemployment</b>						
Less than 1 month	11.3	2.2	24.9	16.7	-54.6	-32.3
1 - 2 months	43.5	8.5	51.2	39.7	-15.0	9.6
3 - 5 months	133.8	26.3	37.0	106.9	261.6	25.2
6 - 11 months	61.2	12.0	43.7	71.2	40.0	-14.0
<i>Long - term unemployed</i>						
12 - 17 months	51.1	10.1	56.1	68.0	-8.9	-24.9
18 - 23 months	32.6	6.4	25.8	24.3	26.4	34.2
24 - 47 months	50.8	10.0	47.1	42.3	7.9	20.1
4 years or more	114.4	22.5	100.1	113.1	14.3	1.1
<i>Long-term unemployed total</i>	248.9	49.0	229.1	247.6	8.6	0.5
Did not answer	9.7	1.9	9.0	6.0	7.8	61.7
<b>Educational level</b>						
Less than primary	4.1	0.8	3.1	5.7	32.3	-28.1
Primary education	45.5	9.0	33.4	45.7	36.2	-0.4
Secondary education	261.5	51.4	192.2	256.0	36.1	2.1
Post - secondary	74.5	14.6	45.5	62.6	63.7	19.0
Tertiary	122.8	24.2	120.6	118.2	1.8	3.9
<b>Registration at a public employment office (DYPA)</b>						
Registered at a public employment office and receive benefit or assistance	117.1	23.0	59.5	85.1	96.8	37.6
Registered at a public employment office but do not receive benefit or assistance	301.9	59.4	251.6	293.6	20.0	2.8
Not registered at a public employment office	85.4	16.8	80.6	107.6	6.0	-20.6
Did not answer	3.9	0.8	3.1	1.8	25.8	116.7

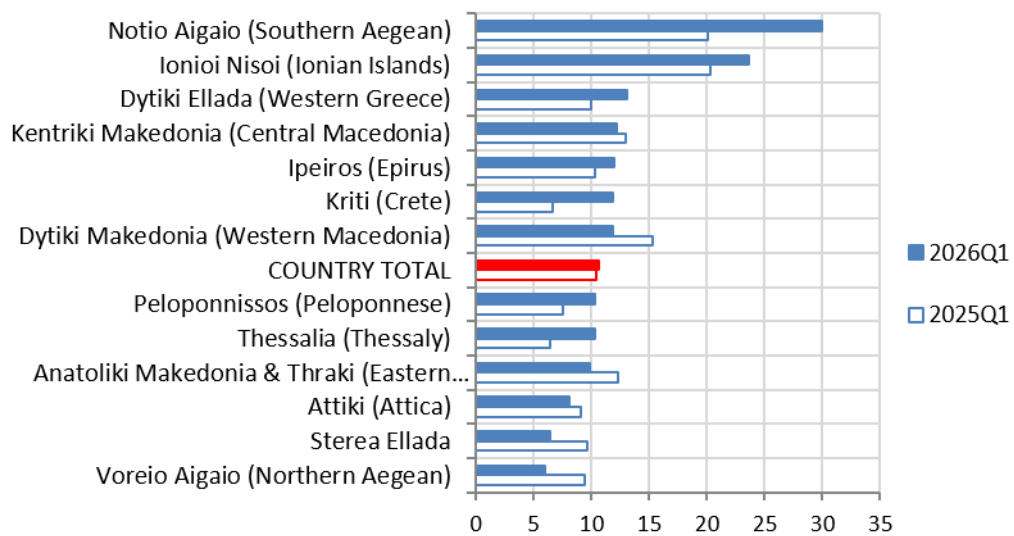
The largest share of unemployed persons report as main reason for stopping their last job that it was a job of limited duration that ended (41.3%). The share of the unemployed that have not worked in the past amounts to 18.6% (Table 4).

<sup>(3)</sup> Persons who worked for the last time more than 8 years ago are not asked why they stopped working

The majority of the unemployed (49.0%) are seeking a job for one year or more (long-term unemployed). 61.2% of the unemployed have completed up to secondary education. 16.8% of the unemployed report that they are not registered at the public employment office (DYPA), whereas 23.0% report that they receive a benefit or assistance from the public employment office (Table 4).

The Regions of Notio Aigaio (Southern Aegean) and of Ionioi Nisoi (Ionian Islands) recorded the highest unemployment rates whereas the lowest rates are observed in the Regions of Voreio Aigaio (Northern Aegean) and of Sterea Ellada (Table 1, Graph 4).

**Graph 4: Unemployment rate (%) by Region (NUTS 2)**



#### IV. CHARACTERISTICS OF PERSONS OUTSIDE THE LABOUR FORCE

Table 5 presents the number of the persons outside the labour force, aged less than 75, by existence of previous work experience, reason for leaving the last job, their willingness to work, as well as job search and immediate availability for work, for the 1st quarter 2026. Furthermore, the table includes the corresponding data for the previous quarter and the same quarter one year ago, as well as the corresponding quarterly and annual rates of change.

**Table 5. Persons outside the labour force, aged less than 75 years, by existence of previous work experience, reason for leaving the last job, willingness to work and availability for work**

(In thousands)

	1st quarter 2026	% of total	4th quarter 2025	1st quarter 2025	Quarterly rate of change (%)	Annual rate of change (%)
<b>Total</b>	<b>2,958.9</b>	<b>100.0</b>	<b>3,002.1</b>	<b>3,066.0</b>	<b>-1.4</b>	<b>-3.5</b>
<b>Existence of previous employment experience</b>						
Never worked in the past	1,401.0	47.3	1,402.8	1,416.2	-0.1	-1.1
Worked in the last job more than 8 years ago <sup>(4)</sup>	831.0	28.1	804.4	872.8	3.3	-4.8
Worked during the last 8 years	726.9	24.6	795.0	777.0	-8.6	-6.4
<b>Reason for leaving the last job</b>						
Dismissed or made redundant	39.2	5.4	37.6	31.8	4.3	23.3
A job of limited duration that has ended	134.9	18.6	156.0	163.7	-13.5	-17.6
Had to look after children or incapacitated adults	16.0	2.2	16.7	24.9	-4.2	-35.7
Resigned for other personal or family reasons	34.4	4.7	34.9	43.1	-1.4	-20.2
Education or training	18.1	2.5	23.7	29.2	-23.6	-38.0
Own illness or disability	24.9	3.4	27.5	28.6	-9.5	-12.9
Retirement	434.8	59.8	469.7	422.8	-7.4	2.8
Other reasons	24.6	3.4	28.8	32.9	-14.6	-25.2
<b>Willingness to work</b>						
Wish to work	168.2	5.7	182.9	244.9	-8.0	-31.3
Do not want to work	2,761.7	93.3	2,782.8	2,788.6	-0.8	-1.0
Did not answer	29.0	1.0	36.4	32.4	-20.3	-10.5
<b>Job search and immediate availability for work</b>						
Persons seeking work but not immediately available	40.0	1.4	28.6	69.6	39.9	-42.5
Persons available to work but not seeking	73.0	2.5	97.0	106.1	-24.7	-31.2
Other	2,845.9	96.2	2,876.6	2,890.3	-1.1	-1.5

<sup>(4)</sup> Persons who worked for the last time more than 8 years ago, are not asked why they stopped working.

Most of the persons outside the labour force, 15-74 years old, have never worked in the past (47.3%) or they worked for the last time 8 years ago or more (28.1%). Among the persons that worked for the last time during the previous eight years, the majority stopped working due to retirement (59.8%) or because it was a job of limited duration that ended (18.6%).

93.3% of the persons outside the labour force state that they do not want to work. 1.4% of the persons outside the labour force are seeking a job but are not currently available to start working, while 2.5% of them want to work, are available for work in the next two weeks but are not seeking work.

## EXPLANATORY NOTES

**Labour Force Survey** The Labour Force Survey produces estimates since 1981 (second Quarter of the year). From 1998 onwards it is a continuous quarterly survey. The main statistical objective of the Labour Force Survey is to divide the population of working age (15 years and over) into three mutually exclusive and exhaustive groups - persons in employment, unemployed persons and persons outside the labour force. In addition, the Labour Force Survey collects information on demographic characteristics, main job characteristics, the existence and characteristics of a second job, educational attainment, participation in education, previous working experience and search of a job.

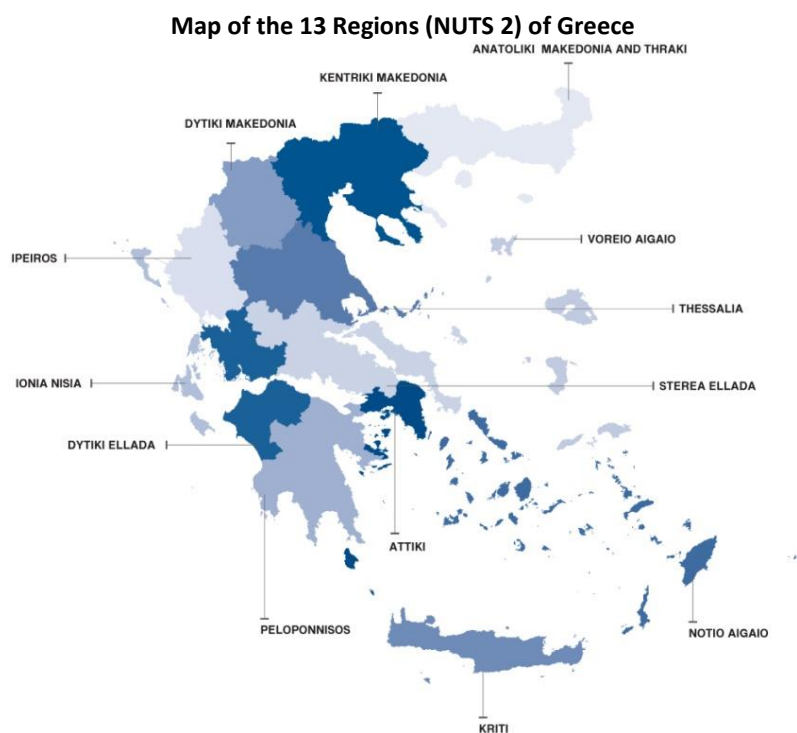
**Legislation** The current survey is fully harmonized with European legislation. The basic act is Regulation (EU) No 2019/1700 of the European Parliament and of the Council establishing a common framework for European statistics relating to persons and households, which is in force since 1/1/2021 and replaced Regulation (EC) 577/98. Implementing Regulation (EU) 2019/2240 sets out the design and characteristics of the survey and Implementing Regulation (EU) 2019/2241 lays down the technical elements of the monthly unemployment data.

**Reference Period** The sample of the Labour Force Survey is equally allocated to the 4 (or 5) weeks of the month. Every selected household is assigned to a specific week, the reference week, running from Monday to Sunday.

- for employment, the reference period is the reference week,
- for employment seeking, the reference period is the reference week and the previous 3 weeks.

**Coverage** The survey covers all members of the private households, who are residing at least one year in Greece and excludes the members of collective households (i.e. hospitals, hotels, military camps, asylums, homes for the elderly, orphanages, etc.).

**Geographical classification** The geographical classification is based on Nomenclature of Territorial Units for Statistics (NUTS).



**Methodology** The estimates of the Labour Force Survey are produced by a suitable unbiased estimator, which takes into account: a) the probability of selection of every sampled household, b) the response rate in every primary sampling unit, c) the allocation of population by NUTS 2 Regions, gender and age group, and d) the distribution of private households to Greece total. As of January 2021, data are collected via electronic questionnaire (CATI, CAPI).

## Definitions

**Employed:** comprise persons aged 15 to 89 (in completed years at the end of the reference week) who, during the reference week, were in one of the following categories:

- a) persons who during the reference week worked for at least 1 hour for pay or profit, including contributing family workers
- b) persons with a job or business who were temporarily not at work during the reference week but had an attachment to their job, where the following groups have a job attachment:
  - persons not at work due to holidays, working time arrangements, sick leave, maternity or paternity leave;
  - persons in job-related training;
  - persons on parental leave, either receiving and/or being entitled to job-related income or benefits, or whose parental leave is expected to be 3 months or less;
  - seasonal workers during the off-season, where they continue to regularly perform tasks and duties for the job or business, excluding fulfilment of legal or administrative obligations;
  - persons temporarily not at work for other reasons where the expected duration of the absence is 3 months or less.

*Note: contributing family workers, persons in own-use production work, voluntary workers, unpaid trainees and individuals involved in other forms of work are defined in the 19th International Conference of Labour Statisticians (ICLS) Resolution concerning statistics of work, employment and labour underutilisation, adopted on 11 October 2013.*

**Unemployed persons** comprise persons aged 15 to 74 who were, during the reference week, (a) not employed, (b) currently available for work, and (c) actively seeking work, or found a job to start within a period of at most 3 months from the end of the reference week.

**Persons outside the labour force** comprise persons who were in one of the following categories: (a) aged below 15, (b) aged above 89, or (c) aged 15 to 89 and neither employed nor unemployed during the reference week, according to the definitions of employment and unemployment described above.

**Economically active population (labour force)** are persons either employed or unemployed.

**Unemployment Rate** is the ratio of unemployed divided by total labour force.

**Regions:** the 13 NUTS 2 areas in which Greece is divided.

**Educational level:** the highest completed level of education provided in 4 categories. The category "Less than primary" includes persons that never went to school. The category "Primary education" includes persons that completed primary school", and the category "Secondary education" includes persons that completed at most "Lyceum"- Upper Secondary Education. The category "Tertiary education" also includes persons that completed master or PHD.

**Self-employed with employees:** persons that who work in their own business, professional practice or farm for the purpose of earning a profit, and who employ at least one other person.

**Self-employed without employees:** persons that who work in their own business, professional practice or farm for the purpose of earning a profit, and who do not employ any other person.

**Employees:** persons who work for a public or private employer and who receive compensation in the form of wages, salaries, fees, gratuities, payment by results or payment in kind.

**Family workers:** persons who help another member of the family to run an agricultural holding or other business, provided they are not considered as employees.

**Part-time job:** a worker's job where the normal hours of work are less than those of comparable full-time workers. The distinction between full-time and part-time job is based on the spontaneous answer given by the respondent.

**Temporary work:** work of **employees**, which will terminate either after a period fixed in advance, or after a period not known in advance, but nevertheless defined by objective criteria, such as the completion of an assignment or the period of absence of an employee temporarily replaced.

**Duration of unemployment:** the time that the respondent is looking for work and, simultaneously, had no job.

Changes in Labor Force Survey as of 2021

	Up to 2020	From 2021 onwards
<b>Data collection</b>	Paper questionnaires	By electronic means (CAPI)
<b>Questionnaire</b>	The number of the surveyed characteristics and the relevant questions remained the same for every quarter of the year.	The number of the surveyed characteristics and the relevant questions changes every quarter. For specific characteristics, only annual estimates are produced.
<b>Definition of employed</b>	<p>Population: Persons aged 15 years and over.</p> <p>Persons who reported that they did not work in the reference week but had a job from which they were temporarily absent are classified as employed, except in the following cases:</p> <ul style="list-style-type: none"> <li>• Employees who are non-active, are absent for more than 3 months and receive less than 50 % of their salary.</li> <li>• Employees who are absent from work due to seasonality.</li> </ul> <p>Self-employed persons are employed in all cases (including family workers).</p>	<p>Population: Persons aged 15-89 years.</p> <p>Persons who reported that they did not work in the reference week but had a job from which they were temporarily absent are considered to be employed only if the duration of their absence is less than 3 months or if they continue to receive income from their work.</p> <ul style="list-style-type: none"> <li>• Sick leave, maternity/paternity leave, and educational leave are excluded, and in these cases, persons are classified as employed.</li> </ul> <p>Seasonal workers, regardless of professional status, who reported that they did not work in the reference week but had a job from which they were temporarily absent due to seasonality are considered to be employed only if they perform tasks related to their work (e.g. renovation, business trip) excluding legal or administrative obligations.</p>
<b>Weighting</b>	Population adjustment according to gender, age and NUTS-2 Region.	Sample weights are applied for all members of the same household and in addition the results of the survey are now extrapolated to the estimated number of households in the Country.

**Economic activity sector:** the classification of economic activities based on the product produced or the service provided. Since 2008, ISCO-08 has been in use, which is identical to NACE Rev.2. Since 2026, NACE Rev. 2.1(i) has been in use, where Section I of NACE Rev. 2 has been split into two sections of NACE Rev. 2.1 (I and K). The Labor Force Survey collects information at the three-digit level for the main job and at the two-digit level for the second and previous jobs.

**Comparison between the sectors of NACE Rev. 2 and NACE Rev. 2.1**

NACE Rev. 2		NACE Rev. 2.1	
Section	Heading	Section	Heading
A	Agriculture, forestry and fishing	A	Agriculture, forestry and fishing
B	Mining and quarrying	B	Mining and quarrying
C	Manufacturing	C	Manufacturing
D	Electricity, natural gas, steam and air conditioning supply	D	Electricity, natural gas, steam and air conditioning supply
E	Water supply, sewage treatment, waste management and remediation activities	E	Water supply, sewage treatment, waste management and remediation activities
F	Construction	F	Construction
G	Wholesale and retail trade; repair of motor vehicles and motorcycles	G	Wholesale and retail trade
H	Transportation and storage	H	Transportation and storage
I	Accommodation and food service activities	I	Accommodation and food service activities

J	Information and communication	J	Publishing, broadcasting, and content production and distribution activities
		K	Telecommunications, computer programming, consulting, computing infrastructure, and other information services activities
K	Financial and insurance activities	L	Financial and insurance activities
L	Real estate activities	M	Real estate activities
M	Professional, scientific and technical activities	N	Professional, scientific and technical activities
N	Administrative and support service activities	O	Administrative and support service activities
O	Public administration and defense; compulsory social security	P	Public administration and defense; compulsory social security
P	Education	Q	Education
Q	Human health and social work activities	R	Human health and social work activities
R	Arts, entertainment and recreation	S	Arts, sports and recreation
S	Other service activities	T	Other service activities
T	Activities of households as employers and differentiated goods-and service- producing activities of households for own use	U	Activities of households as employers and differentiated goods-and service- producing activities of households for own use
U	Activities of extra-territorial organizations and bodies	V	Activities of extra-territorial organizations and bodies

**Occupation:** is a set of jobs consisting of similar tasks and duties. Since 2011 the International Standard Classification of Occupations (ISCO-08<sup>(ii)</sup>) of ILO is used. The Labour Force Survey collects information at 3-digit level for the main, the second and the previous job.

- in Table 2 and in Graph 2, the ISCO-08 classification is used at 1-digit level, as well as the following typology:

Typology of occupation categories – correspondence with ISCO-08 codes	
Highly skilled non-manual (Legislators, senior officials and managers, Professionals, Technicians and associate professionals)	0,1,2,3
Low skilled non-manual (Clerks, Service workers and shop and market sale workers)	4,5
Skilled manual (Craft and related trade workers, Plant and machine operators and assemblers)	0,7,8
Occupations in agriculture, forestry and fishing (skilled and non-skilled)	6 and 92
Elementary occupations (non-skilled workers, except those working in primary sector)	9 except 92

Analytical description of the methodology and definitions used in the Labour Force Survey can be found on the website of ELSTAT at the link:

<https://www.statistics.gr/en/statistics/-/publication/SJO01/->

(ii) <https://www.statistics.gr/en/occupation>