



HELLENIC REPUBLIC

Piraeus, 9 March 2021

HELLENIC STATISTICAL AUTHORITY

## PRESS RELEASE

### DATA ON WEEKLY DEATHS: Period 1<sup>st</sup> to last week, 2020

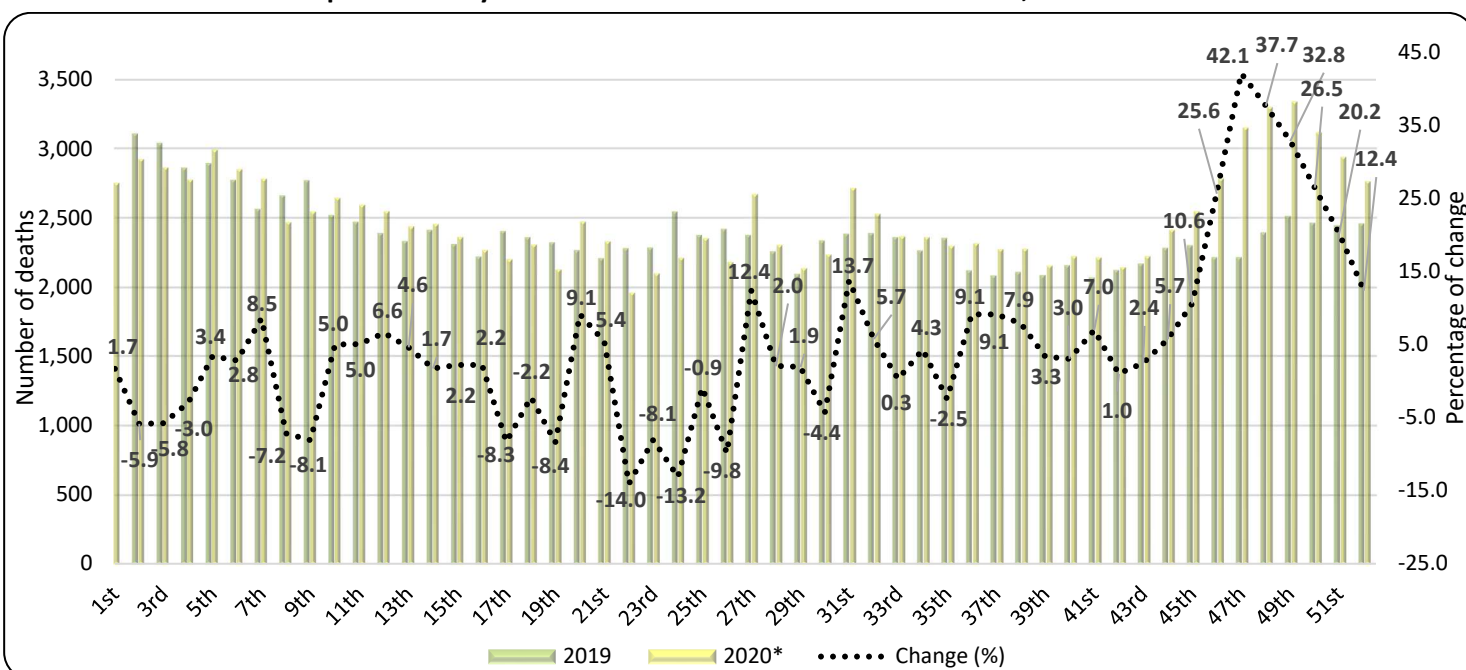
The Hellenic Statistical Authority (ELSTAT) announces an ad-hoc press release with provisional statistical data depicting the weekly evolution of death counts for the period from the first (30/12/2019 - 5/1/2020) to the last 53<sup>rd</sup> week (28/12/2020 - 3/1/2021) of 2020. Data refer to the deaths that occurred in the Greek territory during that period due to various causes including deaths attributed to Covid-19.

The data included in this publication are compiled within the framework of the Vital Statistics Survey and are provided from all the Municipal Civil Registers of Greece according to the vital events that have been declared and registered up until the date of data transmission. Overdue registrations of deaths are integrated at a later stage in the date of occurrence.

The following tables present data on the weekly evolution of deaths by sex during the fifty-three (53) weeks of 2020, as well as comparative data on the number of weekly deaths by sex, age group and usual residence (NUTS II) of the deceased during the fifty-two (52) weeks of the years 2015-2020, taking into consideration that according to ISO 8601 on international date and time format, the years 2015 and 2020 have 53 weeks while the years 2016-2019 only 52.

According to these data, **the number of deaths in Greece for the 53 weeks of 2020 (30/12/2019 - 3/1/2021) amounted to 132,966** (67,173 men και 65,793 women), **whereas for the 52 weeks of 2020 (30/12/2019 – 27/12/2020) amounted to 130,288** (65,800 men and 64,488 women). **For the corresponding period of 52 weeks of 2019 (31/12/2018 – 29/12/2019) amounted to 124,538** (62,854 men and 61,684 women), recording an increase of 4.62%. The average number of deaths for the 2015-2019 period was 121,486, an increase of 8,802 deaths (7.25%). The annual rates of change for the 2015 – 2019 period are 3.82% in 2019 compared to 2018 (119,952), -3.32% in 2018 compared to 2017 (124,069), 5.04% in 2017 compared to 2016 (118,116) and -2,19% in 2016 compared to 2015 (120,755) (Tables 1, 2, 3 and 4).

Graph 1. Weekly evolution of deaths for the weeks 1<sup>st</sup> – 52<sup>nd</sup>, 2019 and 2020



\*Provisional data

#### Information on methodological issues:

Population, Employment and Cost of Living Statistics Division

Population and Migration Statistics Section

Sophia Bakalidou, tel: +30 213 135 2175

e-mail: [s.bakalidou@statistics.gr](mailto:s.bakalidou@statistics.gr)

Christos Christou, tel: +30 213 135 2884

e-mail: [c.christou@statistics.gr](mailto:c.christou@statistics.gr)

#### Information on data provision:

tel: +30 213 135 2022, 2308, 2310

e-mail: [data.dissem@statistics.gr](mailto:data.dissem@statistics.gr)

**Table 1. Weekly evolution of deaths, 2019 and 2020\***

<b>Week</b>	<b>2019</b>	<b>2020*</b>	<b>Change (%)</b>
1 <sup>st</sup>	2,706	2,751	1.7
2 <sup>nd</sup>	3,105	2,923	-5.9
3 <sup>rd</sup>	3,039	2,863	-5.8
4 <sup>th</sup>	2,860	2,774	-3.0
5 <sup>th</sup>	2,893	2,990	3.4
6 <sup>th</sup>	2,772	2,850	2.8
7 <sup>th</sup>	2,563	2,782	8.5
8 <sup>th</sup>	2,660	2,469	-7.2
9 <sup>th</sup>	2,769	2,545	-8.1
10 <sup>th</sup>	2,519	2,645	5.0
11 <sup>th</sup>	2,470	2,594	5.0
12 <sup>th</sup>	2,391	2,548	6.6
13 <sup>th</sup>	2,332	2,439	4.6
14 <sup>th</sup>	2,413	2,454	1.7
15 <sup>th</sup>	2,312	2,362	2.2
16 <sup>th</sup>	2,220	2,268	2.2
17 <sup>th</sup>	2,403	2,203	-8.3
18 <sup>th</sup>	2,360	2,307	-2.2
19 <sup>th</sup>	2,323	2,128	-8.4
20 <sup>th</sup>	2,268	2,474	9.1
21 <sup>st</sup>	2,210	2,329	5.4
22 <sup>nd</sup>	2,281	1,961	-14.0
23 <sup>rd</sup>	2,285	2,101	-8.1
24 <sup>th</sup>	2,546	2,211	-13.2
25 <sup>th</sup>	2,376	2,354	-0.9
26 <sup>th</sup>	2,419	2,181	-9.8
27 <sup>th</sup>	2,377	2,671	12.4
28 <sup>th</sup>	2,258	2,304	2.0
29 <sup>th</sup>	2,097	2,137	1.9
30 <sup>th</sup>	2,337	2,235	-4.4
31 <sup>st</sup>	2,386	2,714	13.7
32 <sup>nd</sup>	2,391	2,528	5.7
33 <sup>rd</sup>	2,361	2,367	0.3
34 <sup>th</sup>	2,264	2,361	4.3
35 <sup>th</sup>	2,356	2,298	-2.5
36 <sup>th</sup>	2,122	2,315	9.1
37 <sup>th</sup>	2,084	2,274	9.1
38 <sup>th</sup>	2,110	2,276	7.9
39 <sup>th</sup>	2,087	2,156	3.3
40 <sup>th</sup>	2,158	2,223	3.0
41 <sup>st</sup>	2,070	2,214	7.0
42 <sup>nd</sup>	2,123	2,144	1.0
43 <sup>rd</sup>	2,170	2,223	2.4
44 <sup>th</sup>	2,283	2,413	5.7
45 <sup>th</sup>	2,303	2,547	10.6
46 <sup>th</sup>	2,216	2,784	25.6
47 <sup>th</sup>	2,216	3,149	42.1
48 <sup>th</sup>	2,395	3,297	37.7
49 <sup>th</sup>	2,512	3,336	32.8
50 <sup>th</sup>	2,463	3,115	26.5
51 <sup>st</sup>	2,445	2,938	20.2
52 <sup>nd</sup>	2,459	2,763	12.4
53 <sup>rd**</sup>		2,678	
<b>Total (52 weeks)</b>	<b>124,538</b>	<b>130,288</b>	<b>4.62</b>
<b>Total (53 weeks)</b>		<b>132,966</b>	

\*Provisional data

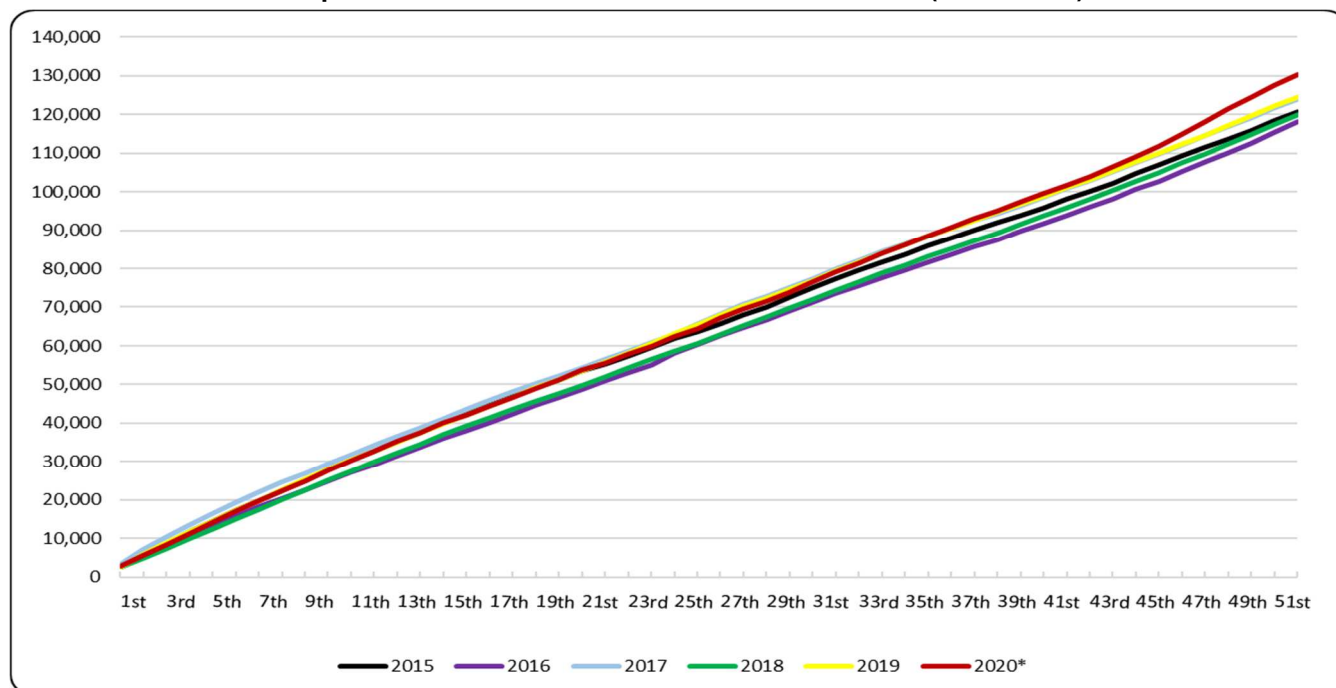
\*\*The comparison is not possible because according to the international standard of dates ISO 8601 2020 consists of 53 weeks whereas 2019 of 52.

On the basis of the available data, the most significant percentage increase of deaths for the period of 52 weeks of the year 2020 compared to 2019 was recorded in the 47<sup>th</sup> week (16/11 – 22/11/2020), an increase of 42.1%, in the 48<sup>th</sup> (23/11 – 29/11/2020) an increase of 37.7% and in the 49<sup>th</sup> (30/11 – 6/12/2020) an increase of 32.8%.

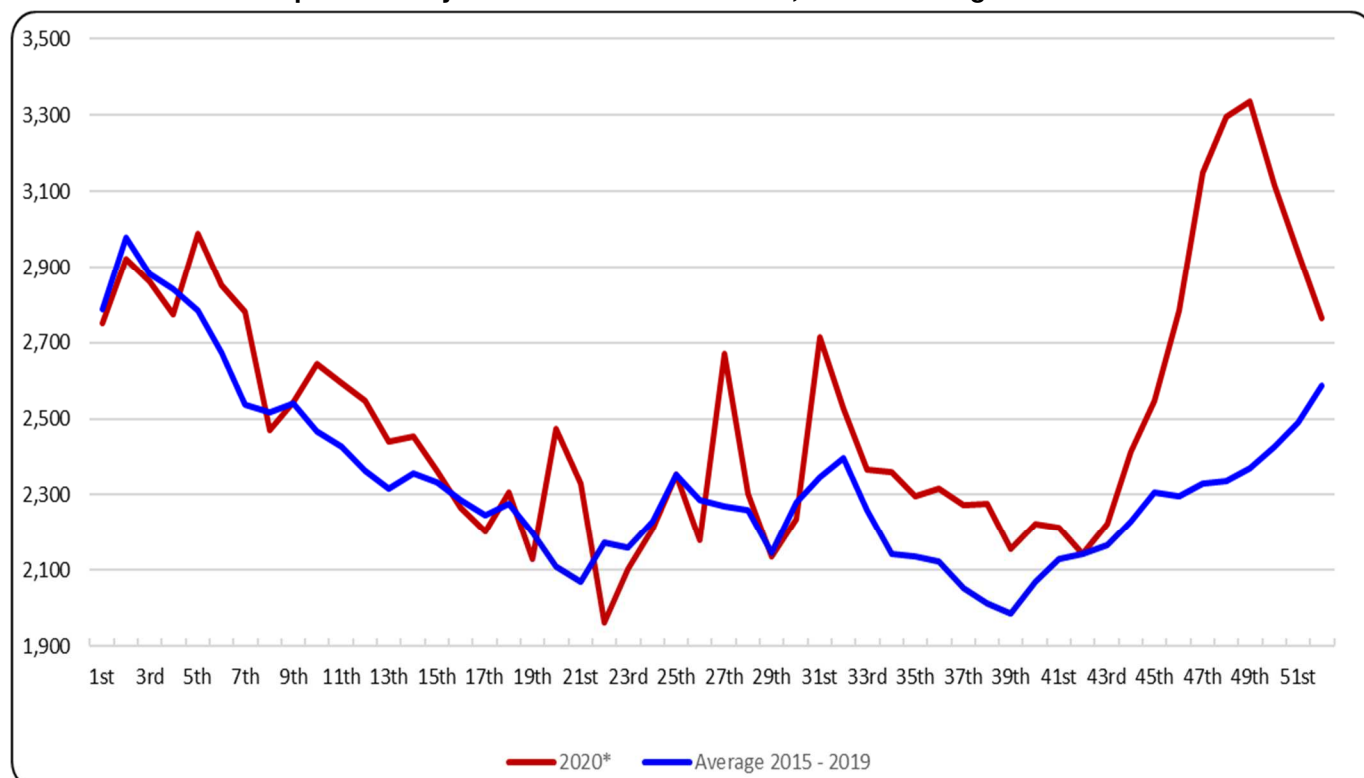
The lowest number of deaths during the corresponding period of 2020 compared to 2019 was recorded in the 22<sup>nd</sup> week (25/5 – 31/5/2020), in the 24<sup>th</sup> week (8/6 – 14/6/2020) and in the 26<sup>th</sup> week (22/6 – 28/6/2020), decreasing by 14%, 13.2% and 9.8% respectively (Table 1).

It should be noted that data are updated after integration of more recent data or upon revision of already transmitted data by the Registry Offices. Consequently, data may differ from those already published in previous press releases.

**Graph 2. Deaths for the weeks 1<sup>st</sup> – 52<sup>nd</sup> 2015 - 2020 (cumulative)**



**Graph 3. Weekly deaths for weeks 1<sup>st</sup> - 52<sup>nd</sup>, 2020 – Average 2015-2019**



\*Provisional data

**Table 2. Deaths for the weeks 1<sup>st</sup> – 53<sup>rd</sup>, 2015 - 2020 (cumulative)**

week/year	2015	2016	2017	2018	2019	2020*	Average 2015 - 2019
1 <sup>st</sup>	2,645	2,637	3,425	2,533	2,706	2,751	2,789
1 <sup>st</sup> - 2 <sup>nd</sup>	5,658	5,275	7,105	4,986	5,811	5,674	5,767
1 <sup>st</sup> - 3 <sup>rd</sup>	8,711	7,876	10,469	7,331	8,850	8,537	8,647
1 <sup>st</sup> - 4 <sup>th</sup>	11,776	10,528	13,551	9,879	11,710	11,311	11,489
1 <sup>st</sup> - 5 <sup>th</sup>	14,554	13,177	16,553	12,484	14,603	14,301	14,274
1 <sup>st</sup> - 6 <sup>th</sup>	17,219	15,771	19,343	15,041	17,375	17,151	16,950
1 <sup>st</sup> - 7 <sup>th</sup>	19,770	18,207	22,018	17,510	19,938	19,933	19,489
1 <sup>st</sup> - 8 <sup>th</sup>	22,460	20,422	24,541	20,003	22,598	22,402	22,005
1 <sup>st</sup> - 9 <sup>th</sup>	25,250	22,561	26,940	22,613	25,367	24,947	24,546
1 <sup>st</sup> - 10 <sup>th</sup>	27,879	24,809	29,345	25,145	27,886	27,592	27,013
1 <sup>st</sup> - 11 <sup>th</sup>	30,426	27,064	31,789	27,560	30,356	30,186	29,439
1 <sup>st</sup> - 12 <sup>th</sup>	32,883	29,249	34,247	29,890	32,747	32,734	31,803
1 <sup>st</sup> - 13 <sup>th</sup>	35,259	31,508	36,500	32,255	35,079	35,173	34,120
1 <sup>st</sup> - 14 <sup>th</sup>	37,649	33,783	38,863	34,596	37,492	37,627	36,477
1 <sup>st</sup> - 15 <sup>th</sup>	40,057	36,010	41,226	36,945	39,804	39,989	38,808
1 <sup>st</sup> - 16 <sup>th</sup>	42,483	38,110	43,593	39,264	42,024	42,257	41,095
1 <sup>st</sup> - 17 <sup>th</sup>	44,723	40,191	45,918	41,439	44,427	44,460	43,340
1 <sup>st</sup> - 18 <sup>th</sup>	47,010	42,437	48,183	43,665	46,787	46,767	45,616
1 <sup>st</sup> - 19 <sup>th</sup>	49,337	44,646	50,342	45,645	49,110	48,895	47,816
1 <sup>st</sup> - 20 <sup>th</sup>	51,352	46,767	52,372	47,757	51,378	51,369	49,925
1 <sup>st</sup> - 21 <sup>st</sup>	53,427	48,794	54,385	49,778	53,588	53,698	51,994
1 <sup>st</sup> - 22 <sup>nd</sup>	55,368	50,993	56,597	52,001	55,869	55,659	54,166
1 <sup>st</sup> - 23 <sup>rd</sup>	57,458	52,992	58,718	54,303	58,154	57,760	56,325
1 <sup>st</sup> - 24 <sup>th</sup>	59,565	55,167	60,854	56,491	60,700	59,971	58,555
1 <sup>st</sup> - 25 <sup>th</sup>	61,800	58,081	63,024	58,571	63,076	62,325	60,910
1 <sup>st</sup> - 26 <sup>th</sup>	63,722	60,399	65,756	60,616	65,495	64,506	63,198
1 <sup>st</sup> - 27 <sup>th</sup>	65,639	62,554	68,298	62,977	67,872	67,177	65,468
1 <sup>st</sup> - 28 <sup>th</sup>	67,910	64,740	70,716	65,137	70,130	69,481	67,727
1 <sup>st</sup> - 29 <sup>th</sup>	70,107	66,733	72,806	67,493	72,227	71,618	69,873
1 <sup>st</sup> - 30 <sup>th</sup>	72,550	69,018	74,949	69,688	74,564	73,853	72,154
1 <sup>st</sup> - 31 <sup>st</sup>	75,029	71,342	77,256	71,919	76,950	76,567	74,499
1 <sup>st</sup> - 32 <sup>nd</sup>	77,401	73,554	79,982	74,207	79,341	79,095	76,897
1 <sup>st</sup> - 33 <sup>rd</sup>	79,643	75,676	82,270	76,492	81,702	81,462	79,157
1 <sup>st</sup> - 34 <sup>th</sup>	81,724	77,725	84,322	78,752	83,966	83,823	81,298
1 <sup>st</sup> - 35 <sup>th</sup>	83,779	79,738	86,398	80,930	86,322	86,121	83,433
1 <sup>st</sup> - 36 <sup>th</sup>	86,055	81,779	88,374	83,126	88,444	88,436	85,556
1 <sup>st</sup> - 37 <sup>th</sup>	88,095	83,750	90,474	85,189	90,528	90,710	87,607
1 <sup>st</sup> - 38 <sup>th</sup>	90,077	85,632	92,454	87,289	92,638	92,986	89,618
1 <sup>st</sup> - 39 <sup>th</sup>	91,996	87,604	94,380	89,311	94,725	95,142	91,603
1 <sup>st</sup> - 40 <sup>th</sup>	93,845	89,685	96,456	91,487	96,883	97,365	93,671
1 <sup>st</sup> - 41 <sup>st</sup>	95,946	91,732	98,641	93,731	98,953	99,579	95,801
1 <sup>st</sup> - 42 <sup>nd</sup>	98,002	93,874	100,871	95,895	101,076	101,723	97,944
1 <sup>st</sup> - 43 <sup>rd</sup>	100,074	96,051	103,028	98,156	103,246	103,946	100,111
1 <sup>st</sup> - 44 <sup>th</sup>	102,276	98,199	105,242	100,457	105,529	106,359	102,341
1 <sup>st</sup> - 45 <sup>th</sup>	104,613	100,548	107,552	102,689	107,832	108,906	104,647
1 <sup>st</sup> - 46 <sup>th</sup>	106,976	102,792	109,818	105,081	110,048	111,690	106,943
1 <sup>st</sup> - 47 <sup>th</sup>	109,229	105,223	112,137	107,519	112,264	114,839	109,274
1 <sup>st</sup> - 48 <sup>th</sup>	111,451	107,636	114,473	109,831	114,659	118,136	111,610
1 <sup>st</sup> - 49 <sup>th</sup>	113,582	110,111	116,751	112,282	117,171	121,472	113,979
1 <sup>st</sup> - 50 <sup>th</sup>	115,888	112,525	119,206	114,785	119,634	124,587	116,408
1 <sup>st</sup> - 51 <sup>st</sup>	118,275	115,241	121,573	117,320	122,079	127,525	118,898
1 <sup>st</sup> - 52 <sup>nd</sup>	120,755	118,116	124,069	119,952	124,538	130,288	121,486
1 <sup>st</sup> - 53 <sup>rd</sup> **	123,324	-	-	-	-	132,966	-
change (%)		-2.19	5.04	-3.32	3.82	4.62	

\*Provisional data

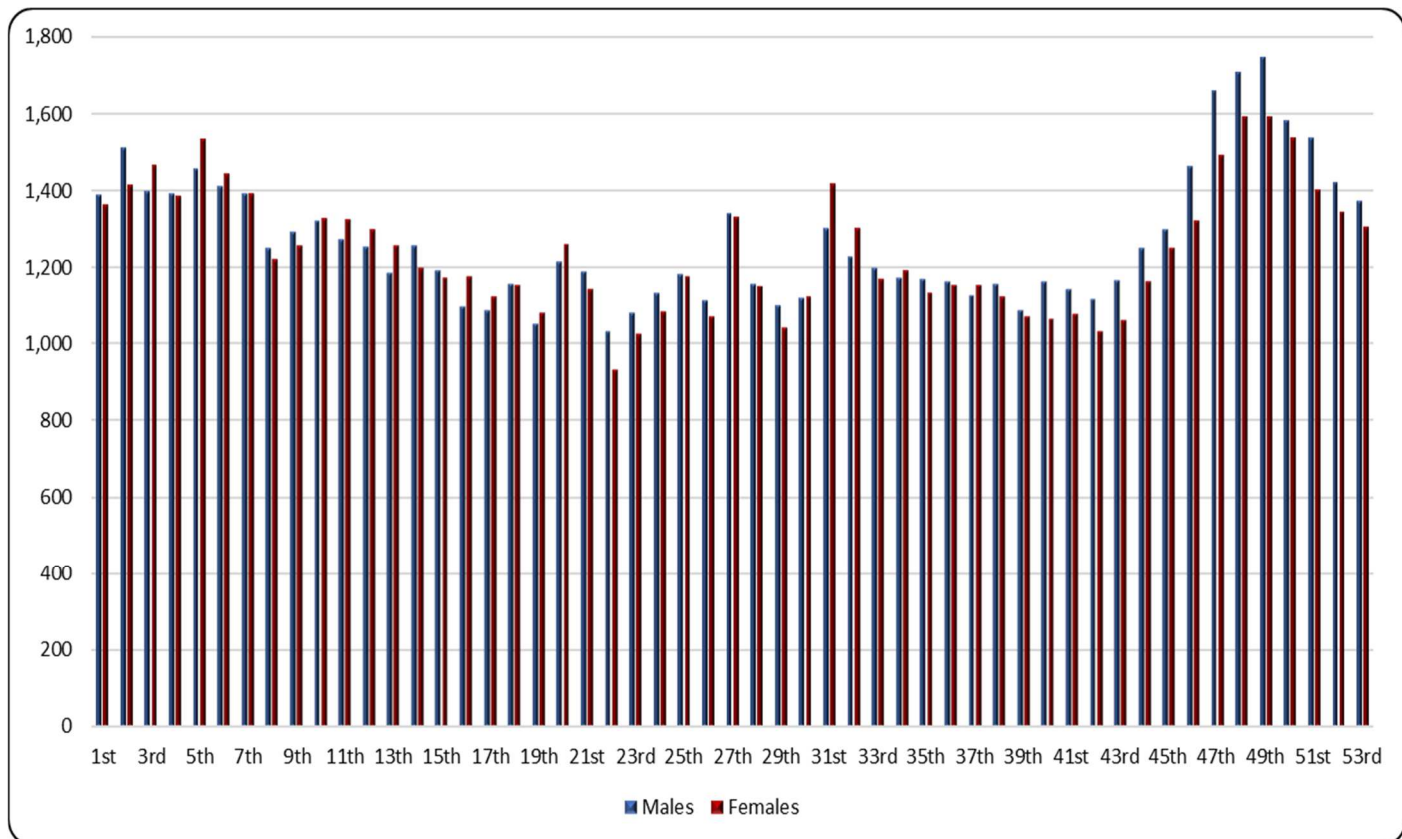
\*\*The comparison is not possible because according to the international standard of dates ISO 8601 2020 consists of 53 weeks whereas 2019 of 52.

**Table 3. Weekly evolution of deaths by sex for the weeks 1<sup>st</sup> – 53<sup>rd</sup>, 2020\***

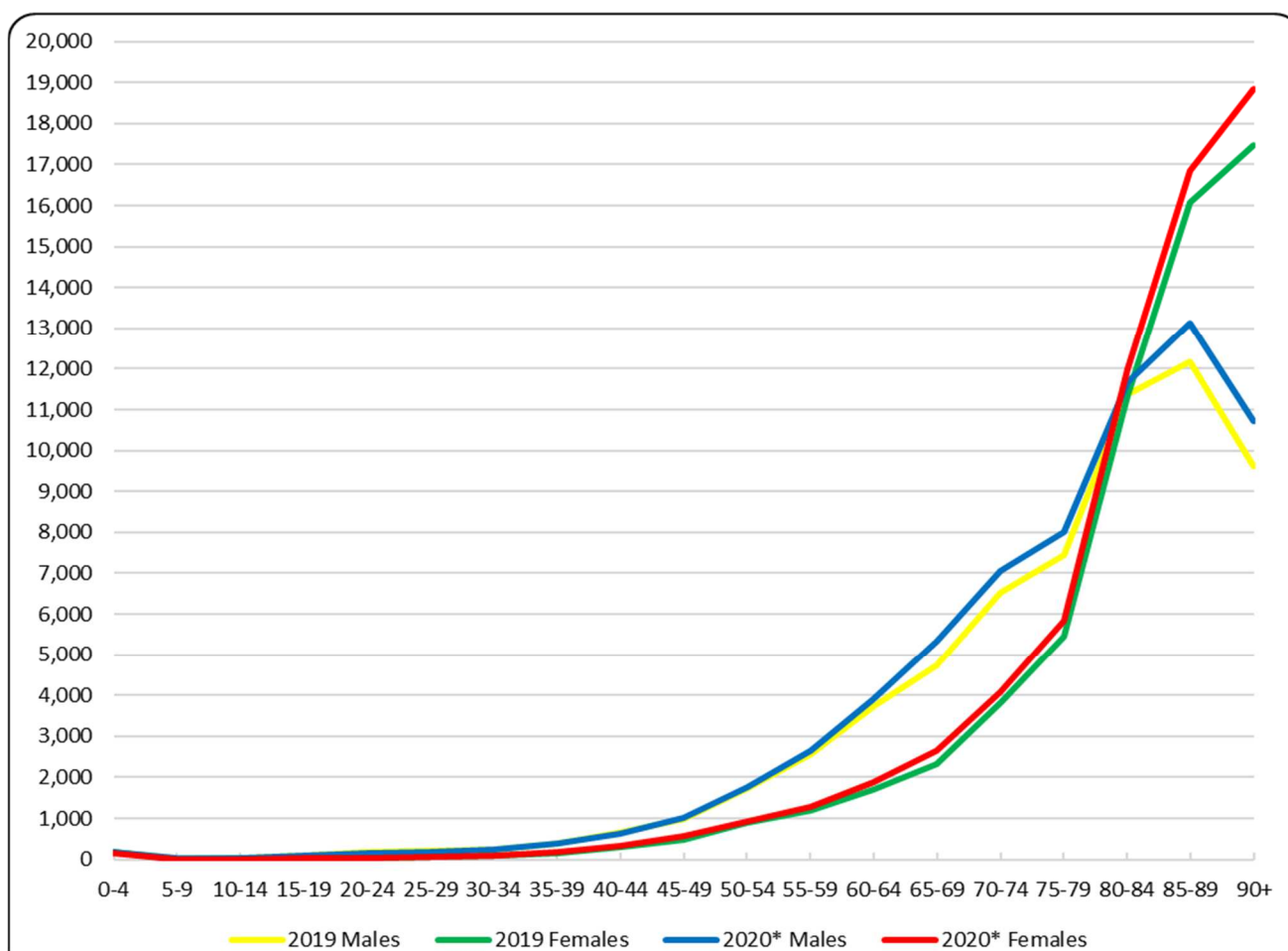
Week	Total	Males	Females
1 <sup>st</sup>	2,751	1,388	1,363
2 <sup>nd</sup>	2,923	1,510	1,413
3 <sup>rd</sup>	2,863	1,398	1,465
4 <sup>th</sup>	2,774	1,390	1,384
5 <sup>th</sup>	2,990	1,456	1,534
6 <sup>th</sup>	2,850	1,409	1,441
7 <sup>th</sup>	2,782	1,392	1,390
8 <sup>th</sup>	2,469	1,249	1,220
9 <sup>th</sup>	2,545	1,290	1,255
10 <sup>th</sup>	2,645	1,320	1,325
11 <sup>th</sup>	2,594	1,271	1,323
12 <sup>th</sup>	2,548	1,251	1,297
13 <sup>th</sup>	2,439	1,183	1,256
14 <sup>th</sup>	2,454	1,257	1,197
15 <sup>th</sup>	2,362	1,190	1,172
16 <sup>th</sup>	2,268	1,093	1,175
17 <sup>th</sup>	2,203	1,084	1,119
18 <sup>th</sup>	2,307	1,155	1,152
19 <sup>th</sup>	2,128	1,050	1,078
20 <sup>th</sup>	2,474	1,214	1,260
21 <sup>st</sup>	2,329	1,188	1,141
22 <sup>nd</sup>	1,961	1,030	931
23 <sup>rd</sup>	2,101	1,077	1,024
24 <sup>th</sup>	2,211	1,130	1,081
25 <sup>th</sup>	2,354	1,180	1,174
26 <sup>th</sup>	2,181	1,111	1,070
27 <sup>th</sup>	2,671	1,340	1,331
28 <sup>th</sup>	2,304	1,155	1,149
29 <sup>th</sup>	2,137	1,098	1,039
30 <sup>th</sup>	2,235	1,116	1,119
31 <sup>st</sup>	2,714	1,299	1,415
32 <sup>nd</sup>	2,528	1,227	1,301
33 <sup>rd</sup>	2,367	1,199	1,168
34 <sup>th</sup>	2,361	1,171	1,190
35 <sup>th</sup>	2,298	1,167	1,131
36 <sup>th</sup>	2,315	1,161	1,154
37 <sup>th</sup>	2,274	1,123	1,151
38 <sup>th</sup>	2,276	1,155	1,121
39 <sup>th</sup>	2,156	1,086	1,070
40 <sup>th</sup>	2,223	1,161	1,062
41 <sup>st</sup>	2,214	1,139	1,075
42 <sup>nd</sup>	2,144	1,115	1,029
43 <sup>rd</sup>	2,223	1,164	1,059
44 <sup>th</sup>	2,413	1,250	1,163
45 <sup>th</sup>	2,547	1,297	1,250
46 <sup>th</sup>	2,784	1,463	1,321
47 <sup>th</sup>	3,149	1,659	1,490
48 <sup>th</sup>	3,297	1,707	1,590
49 <sup>th</sup>	3,336	1,745	1,591
50 <sup>th</sup>	3,115	1,580	1,535
51 <sup>st</sup>	2,938	1,537	1,401
52 <sup>nd</sup>	2,763	1,420	1,343
53 <sup>rd</sup>	2,678	1,373	1,305
<b>Total (53)</b>	<b>132,966</b>	<b>67,173</b>	<b>65,793</b>

\*Provisional data

**Graph 4. Weekly evolution of deaths by sex for the weeks 1<sup>st</sup> – 53<sup>rd</sup>, 2020\***



**Graph 5. Deaths by age group and sex, weeks 1<sup>st</sup> – 52<sup>nd</sup>, 2019 and 2020**



\*Provisional data

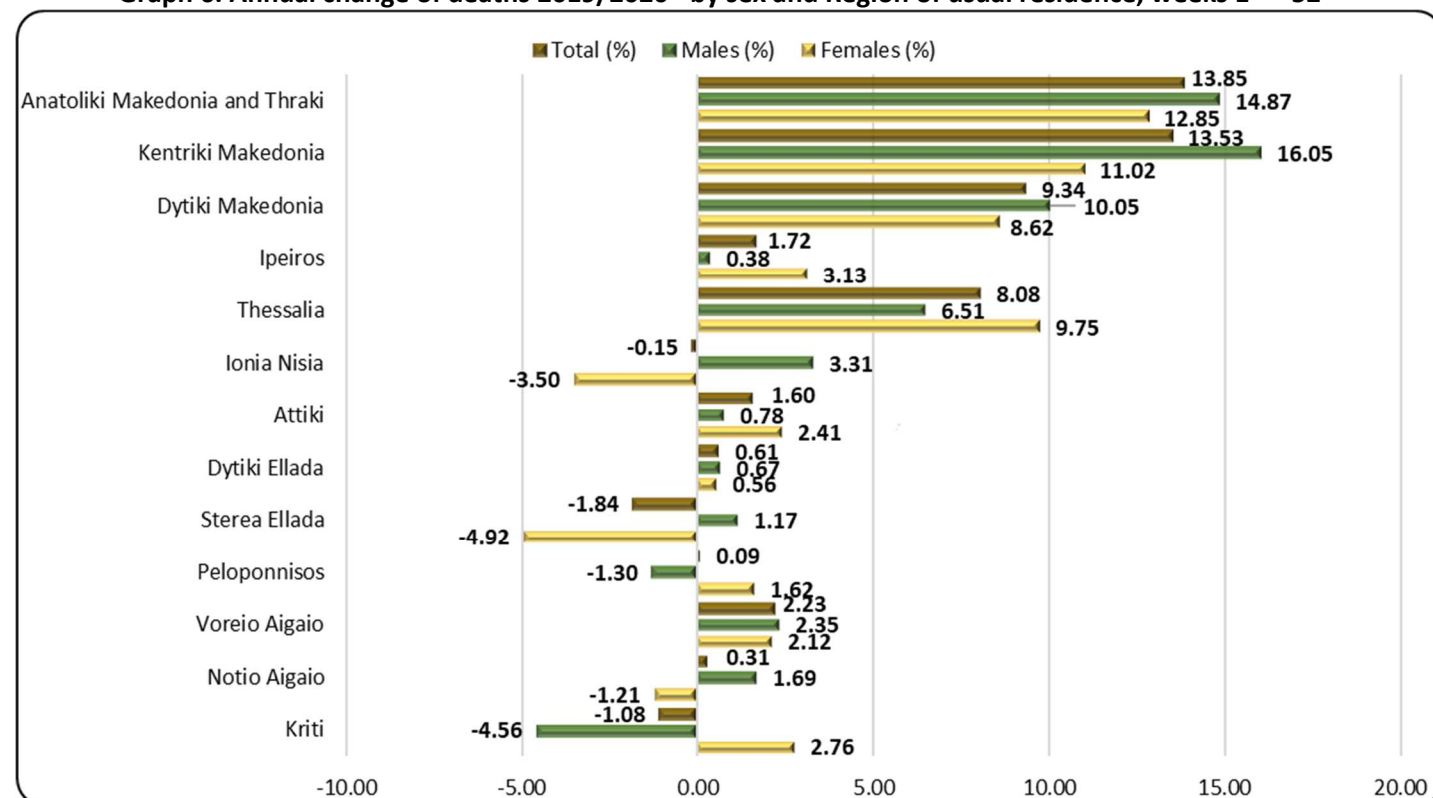
**Table 4. Deaths by age group and sex, weeks 1<sup>st</sup> – 52<sup>nd</sup> 2019 and 2020**

Year	2019			2020*		
Age	Total	Males	Females	Total	Males	Females
0 - 4	382	195	187	329	191	138
5 - 9	33	20	13	33	24	9
10 - 14	45	25	20	37	25	12
15 - 19	118	78	40	117	78	39
20 - 24	213	167	46	204	164	40
25 - 29	255	196	59	237	180	57
30 - 34	333	239	94	323	233	90
35 - 39	546	397	149	538	377	161
40 - 44	933	647	286	943	614	329
45 - 49	1,465	986	479	1,537	993	544
50 - 54	2,635	1,733	902	2,614	1,714	900
55 - 59	3,746	2,555	1,191	3,878	2,617	1,261
60 - 64	5,404	3,711	1,693	5,661	3,827	1,834
65 - 69	7,080	4,745	2,335	7,837	5,213	2,624
70 - 74	10,336	6,518	3,818	10,901	6,918	3,983
75 - 79	12,911	7,452	5,459	13,571	7,835	5,736
80 - 84	22,721	11,377	11,344	23,133	11,410	11,723
85 - 89	28,260	12,178	16,082	29,421	12,879	16,542
90+	27,113	9,629	17,484	28,945	10,485	18,460
Unknown	9	6	3	29	23	6
<b>Total</b>	<b>124,538</b>	<b>62,854</b>	<b>61,684</b>	<b>130,288</b>	<b>65,800</b>	<b>64,488</b>

\*Provisional data

As regards the breakdown of data by sex and age, it is observed that during the 52 weeks of 2020, deaths outnumbered those in the corresponding period of 2019, in absolute figures, mostly in the age groups over 90 (1,832 deaths), 85 to 89 (1,161), 65 to 69 (757), 75 to 79 (660), 70 to 74 (565) and 80 to 84 (412) (Table 4).

**Graph 6. Annual change of deaths 2019/2020\* by sex and Region of usual residence, weeks 1<sup>st</sup> – 52<sup>nd</sup>**



\*Provisional data



**Table 5. Annual change of deaths 2019/2020 by sex and Region of usual residence, weeks 1<sup>st</sup> – 52<sup>nd</sup>**

Year	2019			2020*			Change (%)		
Region (NUTS2)	Total	Men	Women	Total	Men	Women	Total	Men	Women
Anatoliki Makedonia and Thraki	7,587	3,773	3,814	8,638	4,334	4,304	13.85	14.87	12.85
Kentriki Makedonia	21,807	10,871	10,936	24,757	12,616	12,141	13.53	16.05	11.02
Dytiki Makedonia	3,458	1,741	1,717	3,781	1,916	1,865	9.34	10.05	8.62
Ipeiros	4,134	2,121	2,013	4,205	2,129	2,076	1.72	0.38	3.13
Thessalia	8,959	4,609	4,350	9,683	4,909	4,774	8.08	6.51	9.75
Ionia Nisia	2,641	1,298	1,343	2,637	1,341	1,296	-0.15	3.31	-3.50
Attiki	41,816	20,865	20,951	42,483	21,028	21,455	1.60	0.78	2.41
Dytiki Ellada	7,970	4,049	3,921	8,019	4,076	3,943	0.61	0.67	0.56
Stereia Ellada	6,920	3,506	3,414	6,793	3,547	3,246	-1.84	1.17	-4.92
Peloponnisos	7,523	3,934	3,589	7,530	3,883	3,647	0.09	-1.30	1.62
Voreio Aigaio	2,372	1,190	1,182	2,425	1,218	1,207	2.23	2.35	2.12
Notio Aigaio	2,944	1,536	1,408	2,953	1,562	1,391	0.31	1.69	-1.21
Kriti	6,397	3,353	3,044	6,328	3,200	3,128	-1.08	-4.56	2.76
Unknown	10	8	2	56	41	15	460.00	412.50	650.00
<b>Total</b>	<b>124,538</b>	<b>62,854</b>	<b>61,684</b>	<b>130,288</b>	<b>65,800</b>	<b>64,488</b>	<b>4.62</b>	<b>4.69</b>	<b>4.55</b>
Abroad	864	585	279	387	270	117	-55.21	-53.85	-58.06

\*Provisional data

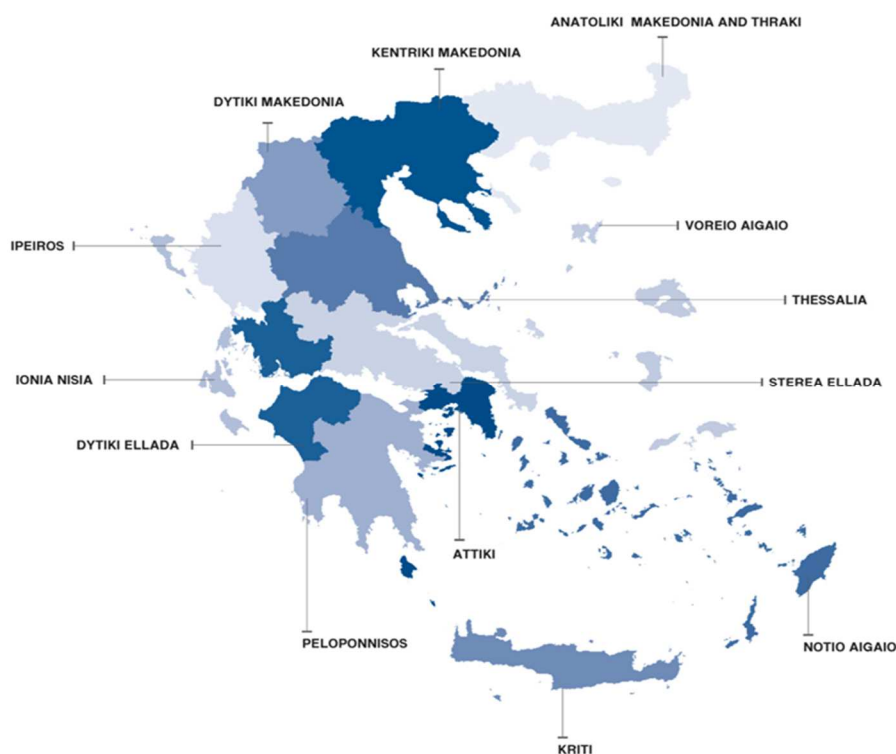
As regards the breakdown of data by place of usual residence, an increase of deaths is observed in ten (10) Regions and a decrease in three (3), during the first 52 weeks of 2020 as compared to the deaths of the corresponding period of 2019. The most notable increase in absolute figures is observed in the Region of Kentriki Macedonia namely by 2,950 deaths and the most significant decrease in the Region of Sterea Ellada, by 127 deaths (Graph 6, Table 5).



## **EXPLANATORY NOTES**

<b>Vital Statistics-Data on weekly deaths</b>	For the Vital statistics Survey, data are provided by Civil Register Offices from all over the Country. Data presented in this press release refer to the weekly evolution of death counts according to the international standard of weeks ISO 8601 for the period from 30/12/2019 to 3/1/2021. This is an ad-hoc data processing for the purpose of depicting the evolution of deaths during the Covid-19 pandemic.
<b>Reference period</b>	2020: 30/12/2019 – 03/01/2021 2019: 31/12/2018 - 29/12/2019
<b>Legal Framework</b>	Law 344/76 concerning the “Registration of vital events” which lays down the obligations of the Civil Register Offices to collect and then transmit the data, as well as by Law 3832/2010 on the “Greek Statistical System”, as amended.
<b>Coverage</b>	The Vital Statistics survey is an exhaustive survey and covers all deaths of usual resident population that occur in the Greek territory.
<b>Definitions</b>	<p>All deaths of usual residents taking place in the Greek territory are recorded, regardless of the cause of death. Deaths of usual resident population of other countries are also recorded but not counted. The deaths of migrants-refugees during their attempt to approach the Greek islands from the Turkish shores (drownings) are not included.</p> <p>Causes of death are defined according to the International Statistical Classification of Diseases and Related Health Problems (ICD-10) and basic breakdowns are Diseases of the Circulatory System, Diseases of the Respiratory System, Neoplasms, Infectious and Parasitic Diseases, Violent deaths and other causes, Covid-19 included.</p>
<b>Methodology</b>	Data on deaths and vital statistics undergo the necessary quality checks, are processed and presented in the form of tables.
<b>Geographical classification</b>	Geographical classification is based on the Nomenclature of Territorial Units for Statistics (NUTS). Data are disseminated at Country and Region (NUTS2) level.

**Map of the Regions (NUTS2) of Greece**



**International  
Standard of  
Dates**

Weeks by year are defined according to international standard ISO 8601 as follows:

WEEK	2019	2020
1 <sup>st</sup>	31/12/2018 - 6/1/2019	30/12/2019 - 5/1/2020
2 <sup>nd</sup>	7/1/2019 - 13/1/2019	6/1/2020 - 12/1/2020
3 <sup>rd</sup>	14/1/2019 - 20/1/2019	13/1/2020 - 19/1/2020
4 <sup>th</sup>	21/1/2019 - 27/1/2019	20/1/2020 - 26/1/2020
5 <sup>th</sup>	28/1/2019 - 3/2/2019	27/1/2020 - 2/2/2020
6 <sup>th</sup>	4/2/2019 - 10/2/2019	3/2/2020 - 9/2/2020
7 <sup>th</sup>	11/2/2019 - 17/2/2019	10/2/2020 - 16/2/2020
8 <sup>th</sup>	18/2/2019 - 24/2/2019	17/2/2020 - 23/2/2020
9 <sup>th</sup>	25/2/2019 - 3/3/2019	24/2/2020 - 1/3/2020
10 <sup>th</sup>	4/3/2019- 10/3/2019	2/3/2020 - 8/3/2020
11 <sup>th</sup>	11/3/2019 - 17/3/2019	9/3/2020 - 15/3/2020
12 <sup>th</sup>	18/3/2019 - 24/3/2019	16/3/2020 - 22/3/2020
13 <sup>th</sup>	25/3/2019- 31/3/2019	23/3/2020 - 29/3/2020
14 <sup>th</sup>	1/4/2019 - 7/4/2019	30/3/2020 - 5/4/2020
15 <sup>th</sup>	8/4/2019 - 14/4/2019	6/4/2020 - 12/4/2020
16 <sup>th</sup>	15/4/2019 - 21/4/2019	13/4/2020 - 19/4/2020
17 <sup>th</sup>	22/4/2019 - 28/4/2019	20/4/2020 - 26/4/2020
18 <sup>th</sup>	29/4/2019 - 5/5/2019	27/4/2020 - 3/5/2020
19 <sup>th</sup>	6/5/2019 - 12/5/2019	4/5/2020 - 10/5/2020
20 <sup>th</sup>	13/5/2019 - 19/5/2019	11/5/2020 - 17/5/2020
21 <sup>st</sup>	20/5/2019 - 26/5/2019	18/5/2020 - 24/5/2020
22 <sup>nd</sup>	27/5/2019 - 2/6/2019	25/5/2020 - 31/5/2020
23 <sup>rd</sup>	3/6/2019 - 9/6/2019	1/6/2020 - 7/6/2020
24 <sup>th</sup>	10/6/2019 - 16/6/2019	8/6/2020 - 14/6/2020
25 <sup>th</sup>	17/6/2019 - 23/6/2019	15/6/2020 - 21/6/2020
26 <sup>th</sup>	24/6/2019 - 30/6/2019	22/6/2020 - 28/6/2020
27 <sup>th</sup>	1/7/2019 - 7/7/2019	29/6/2020 - 5/7/2020
28 <sup>th</sup>	8/7/2019 - 14/7/2019	6/7/2020 - 12/7/2020
29 <sup>th</sup>	15/7/2019 - 21/7/2019	13/7/2020 - 19/7/2020
30 <sup>th</sup>	22/7/2019 - 28/7/2019	20/7/2020 - 26/7/2020
31 <sup>st</sup>	29/7/2019 - 4/8/2019	27/7/2020 - 2/8/2020
32 <sup>nd</sup>	5/8/2019 - 11/8/2019	3/8/2020 - 9/8/2020
33 <sup>rd</sup>	12/8/2019 - 18/8/2019	10/8/2020 - 16/8/2020
34 <sup>th</sup>	19/8/2019 - 25/8/2019	17/8/2020 - 23/8/2020
35 <sup>th</sup>	26/8/2019 - 1/9/2019	24/8/2020 - 30/8/2020
36 <sup>th</sup>	2/9/2019 - 8/9/2019	31/8/2020 - 6/9/2020
37 <sup>th</sup>	9/9/2019 - 15/9/2019	7/9/2020 - 13/9/2020
38 <sup>th</sup>	16/9/2019 - 22/9/2019	14/9/2020 - 20/9/2020
39 <sup>th</sup>	23/9/2019 - 29/9/2019	21/9/2020 - 27/9/2020
40 <sup>th</sup>	30/9/2019 - 6/10/2010	28/9/2020 - 4/10/2020
41 <sup>st</sup>	7/10/2019 - 13/10/2019	5/10/2020 - 11/10/2020
42 <sup>nd</sup>	14/10/2019 - 20/10/2019	12/10/2020 - 18/10/2020
43 <sup>rd</sup>	21/10/2019 - 27/10/2019	19/10/2020 - 25/10/2020
44 <sup>th</sup>	28/10/2019 - 3/11/2019	26/10/2020 - 1/11/2020
45 <sup>th</sup>	4/11/2019 - 10/11/2019	2/11/2020 - 8/11/2020
46 <sup>th</sup>	11/11/2019 - 17/11/2019	9/11/2020 - 15/11/2020
47 <sup>th</sup>	18/11/2019 - 24/11/2019	16/11/2020 - 22/11/2020
48 <sup>th</sup>	25/11/2019 - 1/12/2019	23/11/2020 - 29/11/2020
49 <sup>th</sup>	2/12/2019 - 8/12/2019	30/11/2020 - 6/12/2020
50 <sup>th</sup>	9/12/2019 - 15/12/2019	7/12/2020 - 13/12/2020
51 <sup>st</sup>	16/12/2019 - 22/12/2019	14/12/2020 - 20/12/2020
52 <sup>nd</sup>	23/12/2019 - 29/12/2019	21/12/2020 - 27/12/2020
53 <sup>rd</sup>		28/12/2020 - 3/1/2021

**References:**

More information (tables, graphs, methodology) is available on the website of ELSTAT:  
<http://www.statistics.gr>, at the link Statistics > Population and Social Conditions> Demography.