



ISSUING OF MOTOR VEHICLE LICENSES: OCTOBER 2025

The Hellenic Statistical Authority announces that in October 2025, 20,637 road motor cars (both new and used from abroad) were put into circulation for the first time, recording an increase 7.7% compared with the corresponding month of 2024 when the number of road motor cars was 19,155. In October 2024, a 2.3% decrease had been observed in comparison with the corresponding month of 2023 (Table 1, Graphs 1,2,3,5). A total number of 11,950 new cars were put into circulation in October 2025 compared with 10,700 in October 2024, recording an increase 11.7%.

The new motorcycles over 50cc (both new and used from abroad) that were put into circulation for the first time in October 2025 amounted to 7,017, against 7,408 in October 2024, thus recording a 5.3% decrease. In October 2024, a 15.4% increase had been observed in comparison with the corresponding month of 2023 (Table 1, Graph 4). Out of the above motorcycles 6,734 were new, while the corresponding figure in October 2024 was 7,027, recording a 4.2% decrease.

During the period January - October 2025, 220,671 road motor cars (both new and used from abroad) were put into circulation for the first time, representing an increase of 5.2% compared to the corresponding period of 2024 when the number of road motor cars was 209,847. During the period January - October 2024 an increase of 3.0% had been observed in comparison with the corresponding period of 2023 (Table 3, Graphs 6,7). Out of the above number of road motor cars that were put into circulation from January to October 2025 133,187 were new, while the corresponding number during the respective period of 2024 was 127,456, recording an increase of 4.5%.

During the period January - October 2025 the circulation of new motorcycles over 50cc (both new and used from abroad) amounted to 75,688 against 73,689 in the respective period of 2024, thus representing a 2.7% increase. An increase of 19.2% had been observed during the period January - October 2024 in comparison with the corresponding period of 2023 (Table 3, Graphs 6,7). A total number of 72,473 new motorcycles were put into circulation, from January to October 2025, compared with 70,146 during the corresponding period of 2024, recording a 3.3% increase.

Information on methodological issues:

Sectoral Statistics Division

Transport Statistics Section

Elpida Kleftogianni, Konstantinos Menexes

Tel: +30 213 135 3087, +30 213 135 3055

e-mail: e.kleftogianni@statistics.gr, k.menexes@statistics.gr

Information for data provision:

Tel: +30 213 135 2022

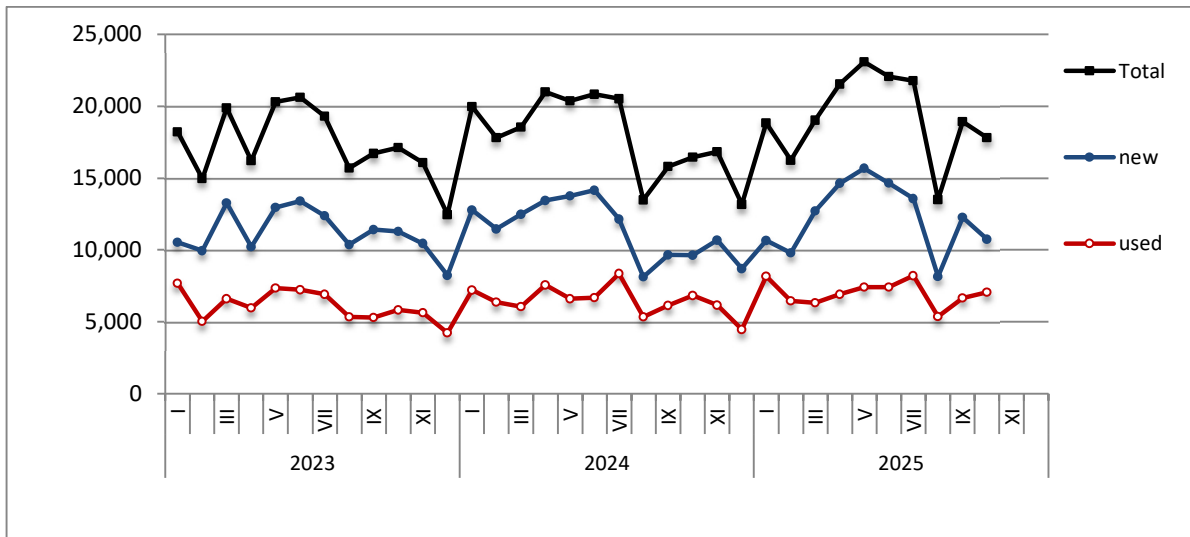
e-mail: data.dissem@statistics.gr

Table 1. Road motor vehicles, both new and used, put into circulation for the first time in Greece: October 2023 - 2025															
Category of Road Motor Vehicles	October									Change (%)					
	2023			2024			2025			2024/2023			2025/2024		
	Total	New	Used	Total	New	Used	Total	New	Used	Total	New	Used	Total	New	Used
Greece, total															
Road Motor Vehicles,total	26,025	18,366	7,659	26,563	17,727	8,836	27,654	18,684	8,970	2.1%	-3.5%	15.4%	4.1%	5.4%	1.5%
1. Road motor cars	19,607	12,250	7,357	19,155	10,700	8,455	20,637	11,950	8,687	-2.3%	-12.7%	14.9%	7.7%	11.7%	2.7%
Passenger Cars	17,121	11,287	5,834	16,463	9,631	6,832	17,814	10,750	7,064	-3.8%	-14.7%	17.1%	8.2%	11.6%	3.4%
Buses	52	9	43	100	33	67	128	74	54	92.3%	266.7%	55.8%	28.0%	124.2%	-19.4%
Lorries	2,434	954	1,480	2,592	1,036	1,556	2,695	1,126	1,569	6.5%	8.6%	5.1%	4.0%	8.7%	0.8%
2. Motorcycles > 50 cc	6,418	6,116	302	7,408	7,027	381	7,017	6,734	283	15.4%	14.9%	26.2%	-5.3%	-4.2%	-25.7%
Prefecture of Attica															
Road Motor Vehicles,total	14,738	11,614	3,124	14,454	11,115	3,339	15,894	12,532	3,362	-1.9%	-4.3%	6.9%	10.0%	12.7%	0.7%
1. Road motor cars	11,419	8,405	3,014	10,707	7,513	3,194	11,820	8,519	3,301	-6.2%	-10.6%	6.0%	10.4%	13.4%	3.4%
Passenger Cars	10,421	7,864	2,557	9,540	6,807	2,733	10,500	7,655	2,845	-8.5%	-13.4%	6.9%	10.1%	12.5%	4.1%
Buses	29	6	23	47	26	21	85	63	22	62.1%	333.3%	-8.7%	80.9%	142.3%	4.8%
Lorries	969	535	434	1,120	680	440	1,235	801	434	15.6%	27.1%	1.4%	10.3%	17.8%	-1.4%
2. Motorcycles > 50 cc	3,319	3,209	110	3,747	3,602	145	4,074	4,013	61	12.9%	12.2%	31.8%	8.7%	11.4%	-57.9%

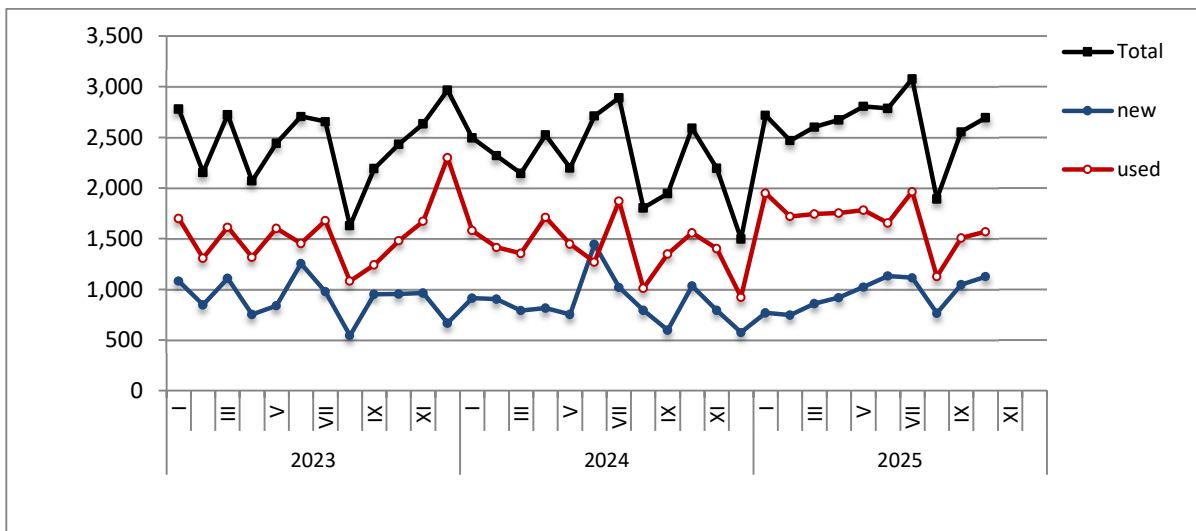
Table 2. Road motor vehicles, both new and used, put into circulation for the first time in Greece: November 2023 – October 2025

Category of Road Motor Vehicles	Average Nov. 2023 - Oct. 2024			Average Nov. 2024 - Oct. 2025			Change (%)		
							Average Nov. 2024 - Oct. 2025 / Average Nov. 2023 - Oct. 2024		
	Total	New	Used	Total	New	Used	Total	New	Used
Greece, total									
Road Motor Vehicles,total	27,124	18,761	8,363	28,210	19,527	8,683	4.0%	4.1%	3.8%
1. Road motor cars	20,352	12,317	8,035	21,219	12,835	8,384	4.3%	4.2%	4.3%
Passenger Cars	17,776	11,358	6,418	18,570	11,853	6,717	4.5%	4.4%	4.7%
Buses	140	68	72	151	75	76	7.9%	10.3%	5.6%
Lorries	2,436	891	1,545	2,498	907	1,591	2.5%	1.8%	3.0%
2. Motorcycles > 50 cc	6,772	6,444	328	6,991	6,692	299	3.2%	3.8%	-8.8%

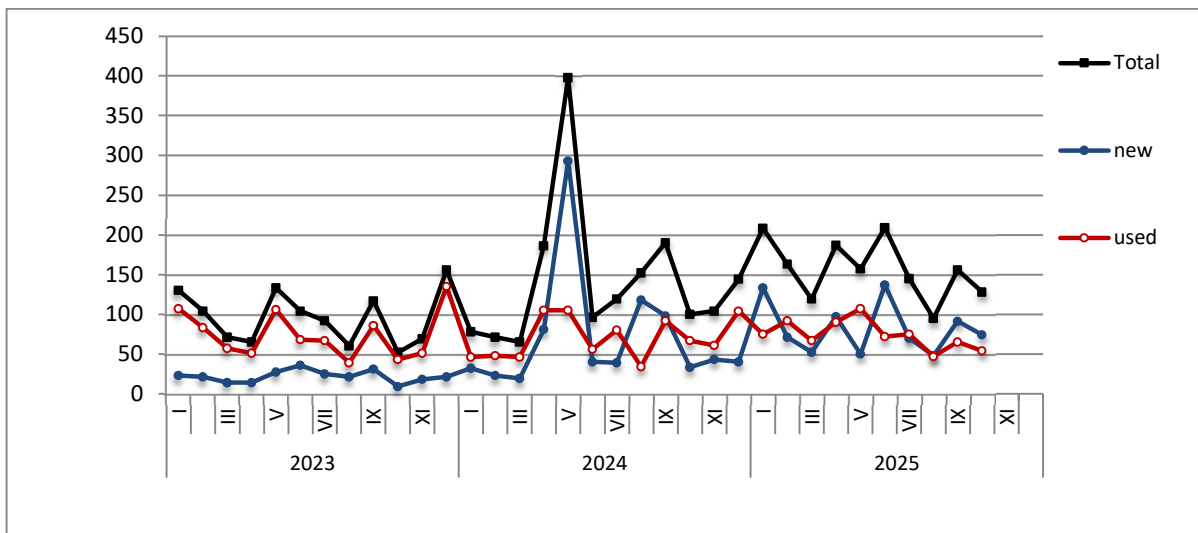
Graph 1: Passenger Cars (January 2023 – October 2025)



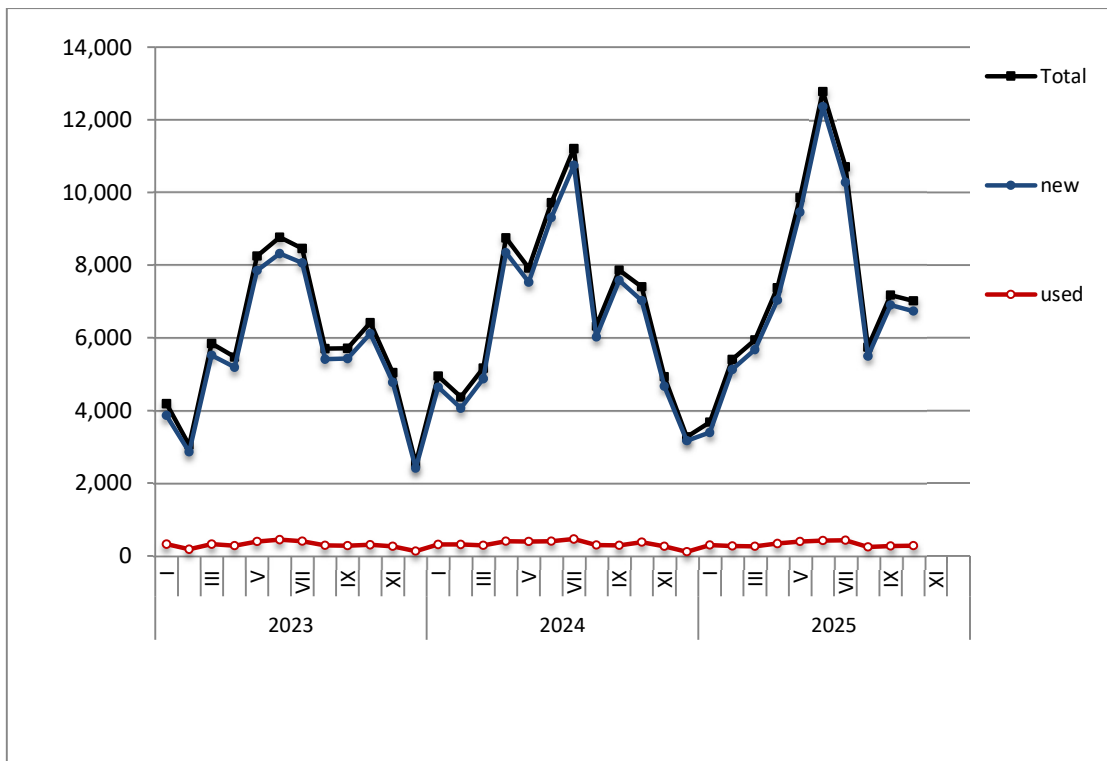
Graph 2: Lorries (January 2023 – October 2025)



Graph 3: Buses (January 2023 – October 2025)



Graph 4: Motorcycles (January 2023 – October 2025)



Graph 5: New Registrations of Motor Vehicles (October 2025)

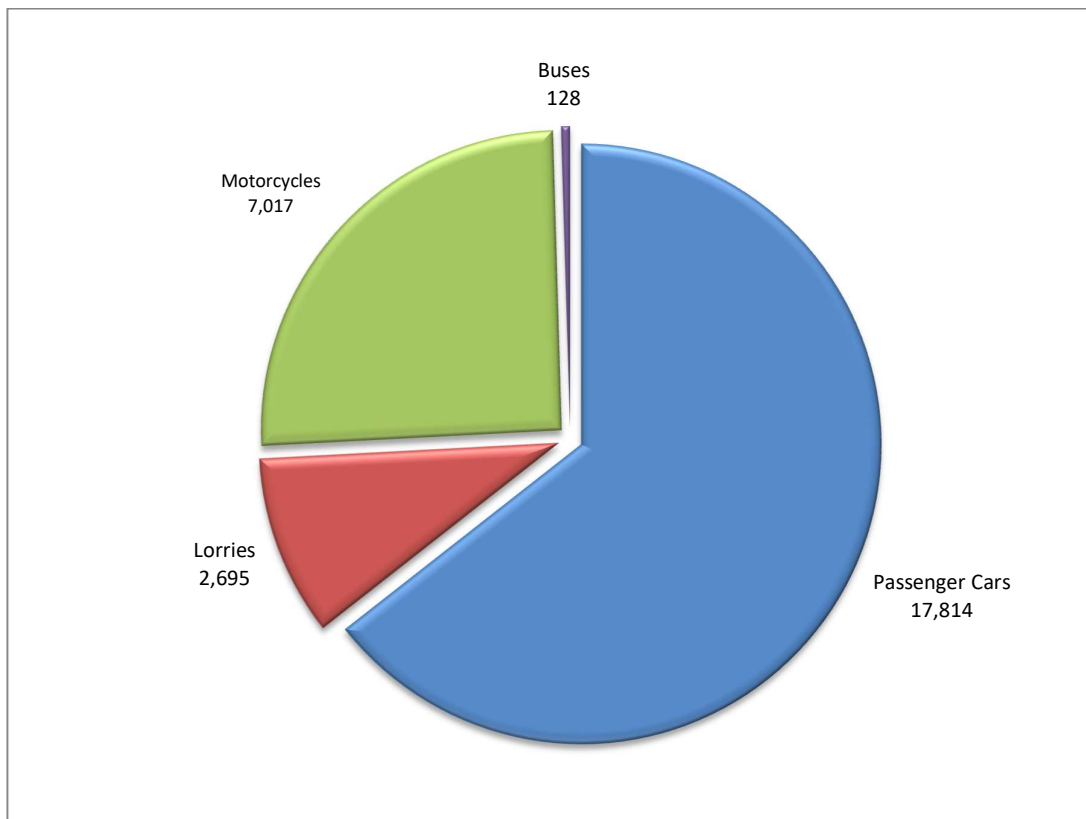
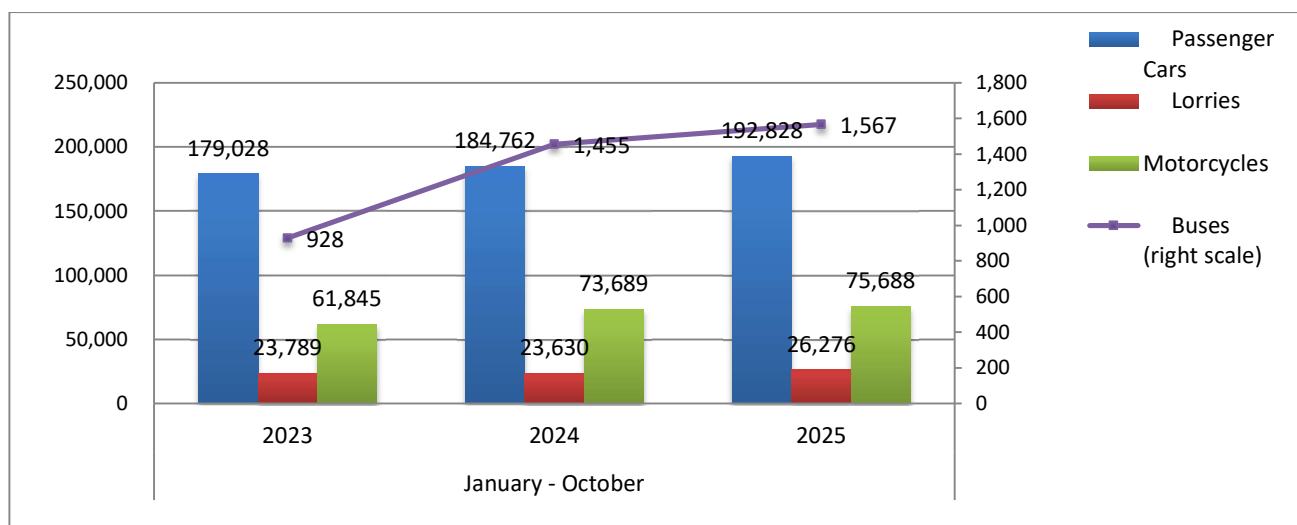


Table 3. Road motor vehicles, both new and used, put into circulation for the first time in Greece: January - October, years 2023 till 2025															
Category of Road Motor Vehicles	January - October									Change (%)					
	2023			2024			2025			2024/2023			2025/2024		
	Total	New	Used	Total	New	Used	Total	New	Used	Total	New	Used	Total	New	Used
Greece, total															
Road Motor Vehicles,total	265,590	183,945	81,645	283,536	197,602	85,934	296,359	205,660	90,699	6.8%	7.4%	5.3%	4.5%	4.1%	5.5%
1. Road motor cars	203,745	125,318	78,427	209,847	127,456	82,391	220,671	133,187	87,484	3.0%	1.7%	5.1%	5.2%	4.5%	6.2%
Passenger Cars	179,028	115,785	63,243	184,762	117,615	67,147	192,828	122,859	69,969	3.2%	1.6%	6.2%	4.4%	4.5%	4.2%
Buses	928	221	707	1,455	776	679	1,567	823	744	56.8%	251.1%	-4.0%	7.7%	6.1%	9.6%
Lorries	23,789	9,312	14,477	23,630	9,065	14,565	26,276	9,505	16,771	-0.7%	-2.7%	0.6%	11.2%	4.9%	15.1%
2. Motorcycles > 50 cc	61,845	58,627	3,218	73,689	70,146	3,543	75,688	72,473	3,215	19.2%	19.6%	10.1%	2.7%	3.3%	-9.3%
Prefecture of Attica															
Road Motor Vehicles,total	148,127	115,274	32,853	152,048	119,758	32,290	161,789	128,961	32,828	2.6%	3.9%	-1.7%	6.4%	7.7%	1.7%
1. Road motor cars	120,216	88,302	31,914	118,786	87,420	31,366	126,523	94,499	32,024	-1.2%	-1.0%	-1.7%	6.5%	8.1%	2.1%
Passenger Cars	109,715	82,291	27,424	108,451	81,377	27,074	115,096	87,809	27,287	-1.2%	-1.1%	-1.3%	6.1%	7.9%	0.8%
Buses	480	135	345	871	539	332	936	614	322	81.5%	299.3%	-3.8%	7.5%	13.9%	-3.0%
Lorries	10,021	5,876	4,145	9,464	5,504	3,960	10,491	6,076	4,415	-5.6%	-6.3%	-4.5%	10.9%	10.4%	11.5%
2. Motorcycles >50 cc	27,911	26,972	939	33,262	32,338	924	35,266	34,462	804	19.2%	19.9%	-1.6%	6.0%	6.6%	-13.0%

Graph 6. New Motor Vehicles Circulation Licenses: January – October, years 2023 till 2025



Graph 7. New Registrations of Motor Vehicles: January – October 2025

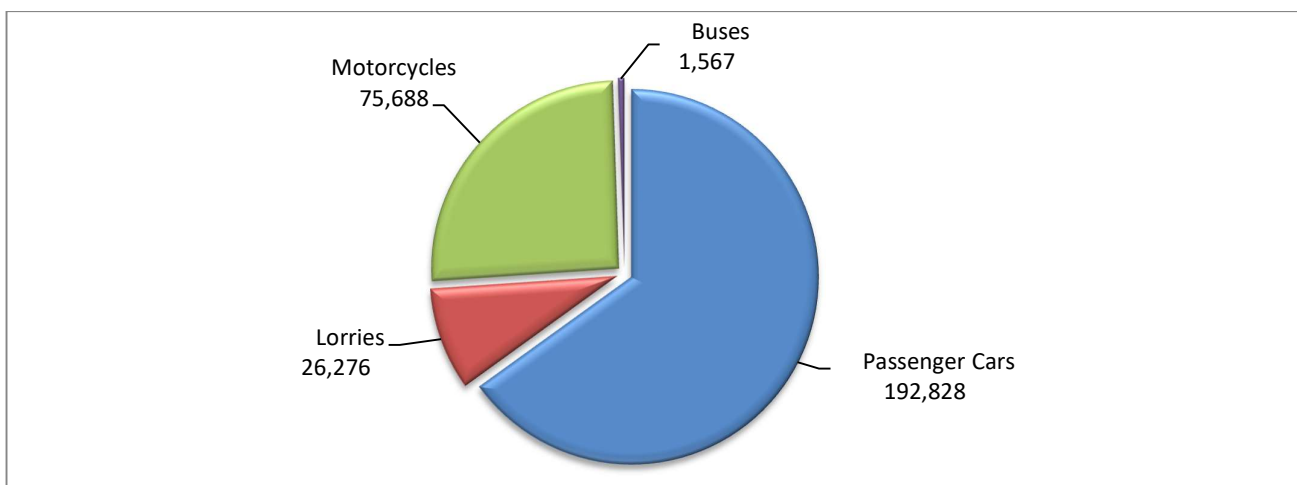


Table 4
Sales of new and used passenger cars by make: October 2025 and January - October 2025

Make	Passenger cars			
	October		January - October	
	new	used	new	used
ABARTH	-	-	3	2
ADRIA	-	-	-	4
ADRIA, SUN LIVING, ELIOS	-	-	1	-
AIXAM	-	-	-	1
ALFA ROMEO	83	29	783	349
ALLIED VEHICLES	-	-	1	-
ALPINA	-	1	4	1
ALPINE	-	-	-	3
ASTON MARTIN	-	-	-	5
AUDI	257	125	2,993	1,320
AUTOCARABANS - RIMOR SPA	-	-	-	2
BAIC	-	-	-	1
BENTLEY	-	-	10	3
BMW	449	246	6,112	2,265
BURSTNER	-	1	2	13
BYD	280	1	1,840	3
CADILLAC	-	-	-	1
CAPRON	-	-	2	16
CARTHAGO	-	-	-	2
CATERHAM	-	-	-	1
CHALLENGER	-	-	2	-
CHAUSSON	-	-	-	1
CHERY	108	-	369	-
CHERY, EBRO	13	-	19	-
CHERY, EXEED, FOWNIX, CHIREY, CHERY EXEED, OMODA	8	-	27	-
CHERY, OMODA	15	-	78	-
CHEVROLET	-	5	-	64
CHEVROLET, GMC, HOLDEN, BUICK, PONTIAC	-	1	-	11
CITROEN	553	424	6,101	3,793
CITROEN / DS	1	194	10	1,310
CORVETTE	-	-	-	1
CUPRA	145	7	1,072	60
DACIA	569	152	4,506	1,635
DAIHATSU	-	1	-	9
DEEPAL	7	-	10	-
DETHLEFFS	-	1	-	8
DFM	-	-	-	5
DFSK, SERES, SOKON, AITO	-	-	4	-
DFSK, SERES, SOKON, FENGON	13	-	217	-
DODGE	-	1	-	8
DONGFENG	5	-	12	-
DS	25	19	399	222
DS / PEUGEOT	-	-	-	12
E-GO	-	-	-	1
EXEED, CHERY EXEED, OMODA, EXLANTIX, XTRIM	3	-	9	-
FERRARI	-	2	1	22
FIAT	219	214	3,530	2,512
FIAT DUCATO ¹	-	-	1	-

Table 4 (cont)
Sales of new and used passenger cars by make: October 2025 and January - October 2025

Make	Passenger cars			
	October		January - October	
	new	used	new	used
FORD	306	464	2,964	4,606
FORD ²	1	-	2	-
FORSTER	-	-	-	1
GEELY	16	-	87	-
HOBBY	-	-	-	4
HONDA	19	62	317	542
HYMER	-	1	1	11
HYUNDAI	663	644	8,776	5,999
INEOS	-	-	1	-
INFINITI	-	-	-	3
IVECO	-	-	-	1
IVECO S.p.a/LAIKA CARAVANS SpA	-	-	-	2
JAECOO, OMODA, CHERY, FOWNIX, LUCANO	64	-	203	-
JAGUAR	1	12	22	162
JEEP	175	78	2,012	626
KAISER JEEP	-	-	-	1
KERABOSS	-	-	3	-
KIA	232	121	5,066	1,306
KNAUS	-	1	-	19
LADA	-	1	-	3
LAGERMAX AUTOTRANSPORT	-	-	-	1
LAMBORGHINI	-	1	5	4
LANCIA	-	1	-	17
LAND ROVER	59	52	485	594
LEAPMOTOR	25	-	161	-
LEVC	-	-	-	2
LEXUS	48	4	583	34
LEYLAND	-	-	-	2
LINCOLN	-	-	-	1
LOTUS	-	-	6	2
LUCID	-	-	-	1
LYNK&CO	24	7	242	52
MAN	-	-	-	1
MASERATI	1	1	11	16
MAZDA	115	23	1,548	267
MCLAREN	-	1	-	4
MERCEDES	203	568	2,630	5,649
MERCEDES ¹	-	-	11	-
MG	1	2	60	33
MG, ROEWE	242	4	3,883	38
MINI	202	45	1,824	456
MITSUBISHI	2	71	310	856
MOBILVETTA DESIGN SpA	-	-	-	4
MOKE	-	-	29	-
MOOVEO	-	-	-	1
MORELO	-	-	-	1
MORGAN	-	-	-	1
NIO	-	-	2	-

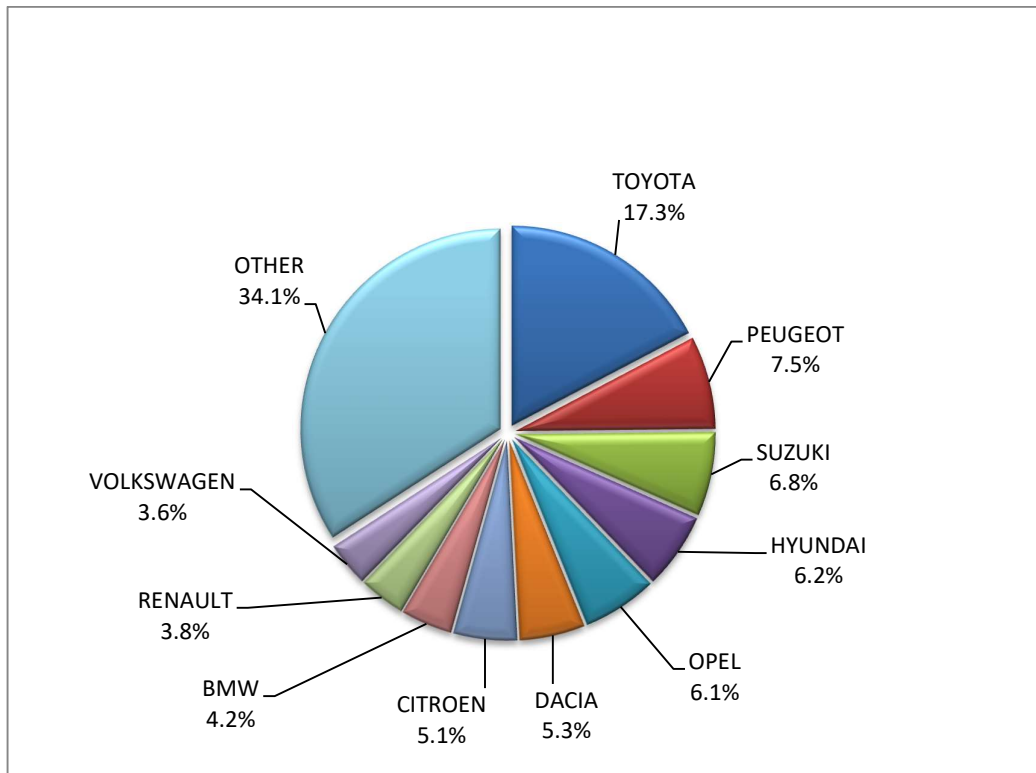
Table 4 (cont)
Sales of new and used passenger cars by make: October 2025 and January - October 2025

Make	Passenger cars			
	October		January - October	
	new	used	new	used
NISSAN	271	461	3,340	4,565
NISSAN ¹	-	-	2	-
OPEL	653	413	6,711	4,312
PEUGEOT	808	822	10,099	7,810
PEUGEOT ¹	-	-	1	-
PEUGEOT ²	-	-	5	-
PIAGGIO	-	-	-	1
POESSL	-	-	-	1
PORSCHE	23	52	289	550
PSA AUTOMOBILES	-	-	-	2
RANGE ROVER	-	6	2	44
RC FISKER A/S	-	-	-	1
RENAULT	406	577	4,081	5,882
RENAULT ¹	-	-	3	-
RIMOR	-	1	2	2
ROLLER TEAM	1	-	4	-
ROLLS ROYCE	-	-	1	1
SAAB	-	-	-	2
SEA / ELNAGH	-	-	-	1
SEAT	66	45	905	512
SKODA	141	110	2,815	1,241
SMART	7	99	96	920
SSANGYONG	-	-	-	3
SSANGYONG, KG MOBILITY	15	-	170	1
SUBARU	3	3	95	65
SUZUKI	732	138	8,095	1,292
SKODA	-	-	-	1
TEC CARAVAN	-	-	-	3
TESLA	39	7	884	97
TOYOTA	1,861	500	19,154	4,961
TOYOTA ¹	-	-	1	-
TRIGANO	-	-	-	1
VOLKSWAGEN	386	210	5,363	2,434
VOLVO	174	32	1,351	274
VOYAH	-	-	4	-
WEINSBERG	-	-	-	1
WESTFALIA	-	-	1	-
XPENG	-	-	7	-
ZEEKR	6	-	7	-
ZEEKR, GEELY	6	-	8	-
ZHIDOU, ZD, ELARIS	-	-	1	-
TOTAL	10,750	7,064	122,859	69,969

1 : With 2nd/3rd stage manufacturer in Greece.

2 : With 2nd/3rd stage manufacturer abroad.

Graph 8. Sales of new passenger cars by make (October 2025)



Graph 9. Sales of new passenger cars by make (January – October 2025)

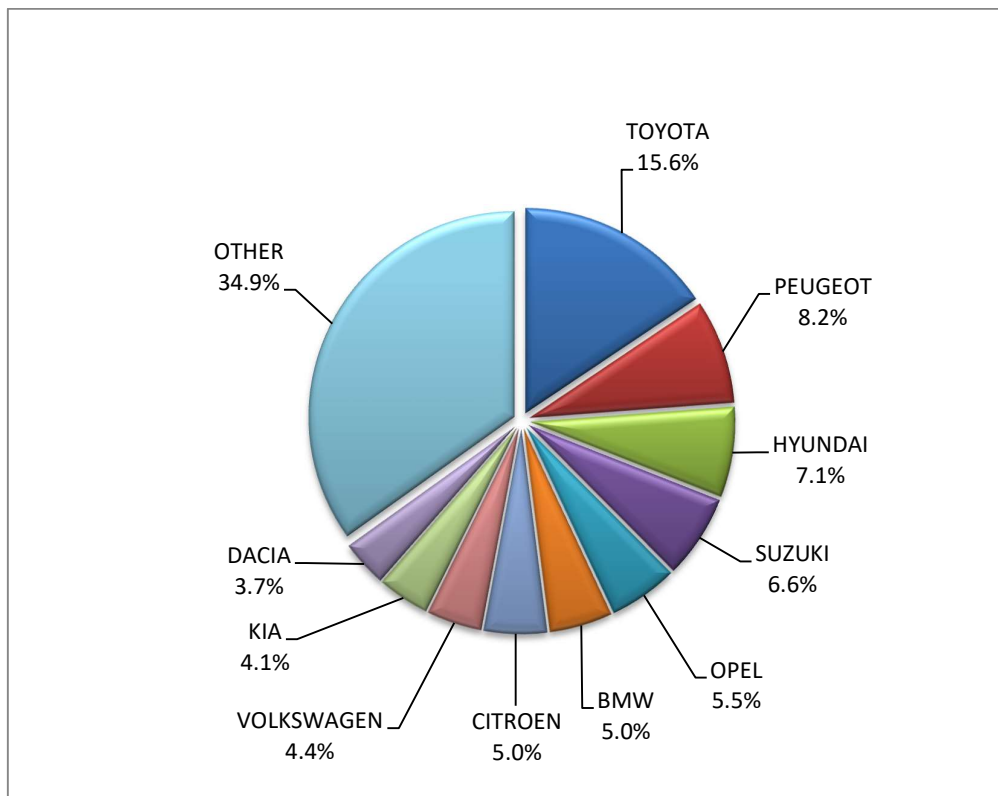


Table 5
Sales of new and used lorries by make: October 2025 and January - October 2025

Make	Lorries			
	October		January - October	
	new	used	new	used
ADDAX MOTORS NV ¹	-	-	1	-
ADDAX MOTORS, ISEKI, STAMA	-	-	7	-
BRONTO SKYLIFT	-	-	-	1
BYD	4	-	22	4
CASILLO ALLESTIMENTI V.I. SRL	-	-	1	-
CENNTRO	-	-	2	-
CENTIGON	-	-	-	1
CITROEN	54	48	593	533
DACIA	2	5	2	62
DACIA ¹	-	-	24	-
DAF	5	48	14	510
DAF ¹	2	-	24	3
DAIHATSU	-	-	-	2
DANGEL	-	-	-	1
DFSK	-	-	-	1
DFSK, SERES, SOKON, FENGON	-	-	2	-
DODGE	-	-	-	10
ESAGONO ENERGIA	3	-	15	-
ESAGONO ENERGIA S.R.L. ²	-	-	4	-
FARIZON	-	-	3	-
FARIZON, LEVC	-	-	10	-
FCA US LLC	-	-	-	3
FEIDI	4	-	27	-
FIAT	86	93	855	975
FIAT DUCATO ¹	2	-	3	-
FIAT-IVECO	-	1	-	21
FORD	210	297	1,758	3,033
FORD ¹	-	1	252	3
FORD ²	3	1	11	1
FOTON	-	-	62	-
FUSO	1	1	1	1
GARIA ¹	-	-	2	-
GARIA, CLUB CAR, MELEX	1	-	21	-
GINAF	-	-	-	1
GONOW	-	-	2	-
GOUPIL	-	-	-	1
GOUPIL, MEGA, POLARIS, GEM	1	-	7	2
HUMBAUR GMBH	-	-	-	2
HYUNDAI	-	-	-	19
ISUZU	64	22	294	191
IVECO	-	40	24	412
IVECO ¹	6	-	23	-
IVECO MAGIRUS	-	-	-	6
JAC GROUP ¹	-	-	1	-

Table 5 (cont)
Sales of new and used lorries by make: October 2025 and January - October 2025

Make	Lorries			
	October		January - October	
	new	used	new	used
JEEP	-	3	-	23
JUNGE FAHRZEUGBAU	-	-	-	1
KAISER AG	-	-	-	1
KIA	-	-	-	2
KIEFER	-	-	-	1
KOSKERIDIS	-	-	-	2
LAND ROVER	-	1	2	15
LEVC	-	-	6	-
LEYLAND	-	-	-	1
MAN	9	87	48	1,122
MAN ¹	3	-	22	2
MAN ²	-	-	3	-
MAXUS	-	-	1	1
MAXUS, LDV	4	-	126	3
MAZDA	-	-	-	6
MERCEDES	13	358	151	3,955
MERCEDES ¹	9	-	108	2
MERCEDES ²	-	1	9	4
MITSUBISHI	-	27	1	264
MITSUBISHI ¹	-	-	12	1
MITSUBISHI ²	-	-	1	2
MITSUBISHI FUSO	-	6	2	52
MITSUBISHI FUSO ¹	1	-	74	1
MITSUBISHI FUSO ²	-	-	2	4
MMC	-	-	-	1
NISSAN	3	57	56	519
NISSAN ¹	-	-	1	-
NISSAN ²	-	-	-	1
OAF	-	-	-	2
OPEL	40	68	499	671
OTOKAR OTOMOTIV VE SAVUNMA SANAYI A.S ¹	-	-	2	-
PEUGEOT	165	58	882	539
PFAU	-	-	-	1
PIAGGIO	-	2	11	24
PIAGGIO ¹	-	-	5	-
PIAGGIO ²	1	-	2	-
RAM	-	-	-	2
RENAULT	23	110	110	1,148
RENAULT ¹	-	-	7	1
SCANIA	11	52	55	595
SCANIA ¹	-	-	2	-
SEAT	-	2	-	4

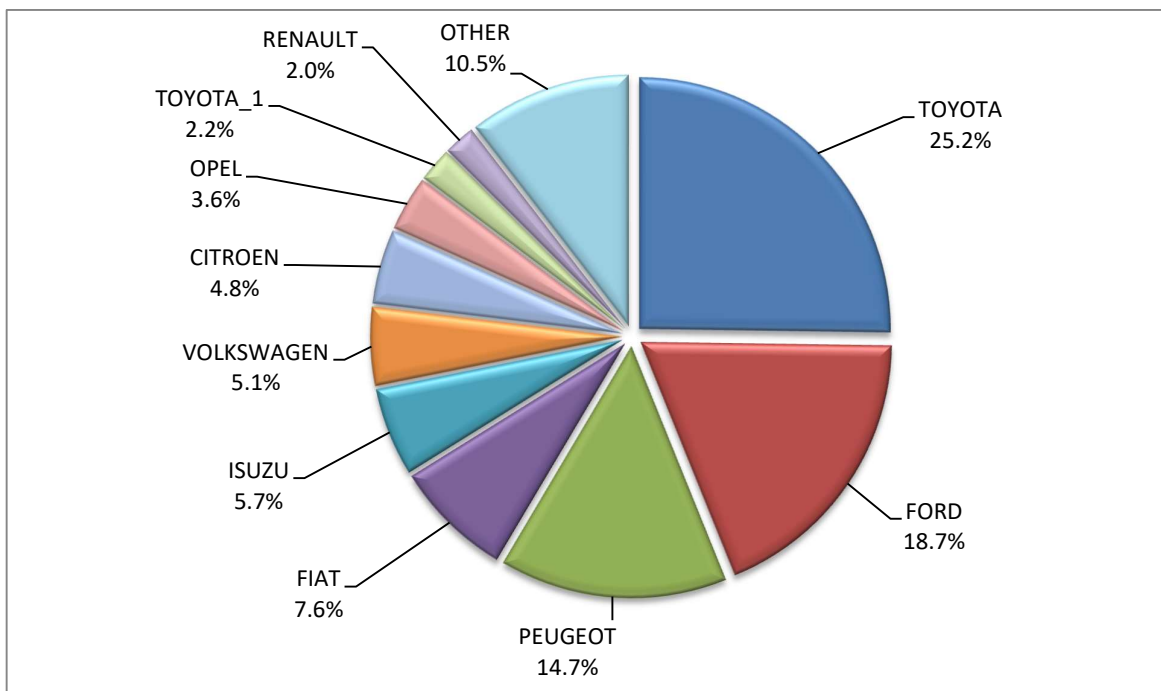
Table 5 (cont)
Sales of new and used lorries by make: October 2025 and January - October 2025

Make	Lorries			
	October		January - October	
	new	used	new	used
SISU	-	-	-	1
SKODA	-	1	-	5
SMYRLIADIS	-	-	-	1
SPIER	-	-	-	2
SSANGYONG	-	-	-	4
SSANGYONG, KG MOBILITY	14	-	80	-
STEYER	-	-	-	2
STREET SCOOTER	-	-	-	2
SUBARU	-	-	-	1
SUZUKI	-	-	2	-
TOYOTA	284	45	2,418	471
TOYOTA ¹	25	-	72	-
VICTORY	2	-	30	-
VOLKSWAGEN	57	55	522	571
VOLVO	2	79	74	937
VOLVO ¹	12	-	38	-
VOLVO ²	-	-	2	2
TOTAL	1,126	1,569	9,505	16,771

1 : With 2nd/3rd stage manufacturer in Greece.

2 : With 2nd/3rd stage manufacturer abroad.

Graph 10. Sales of new lorries by make (October 2025)



Graph 11. Sales of new lorries by make (January – October 2025)

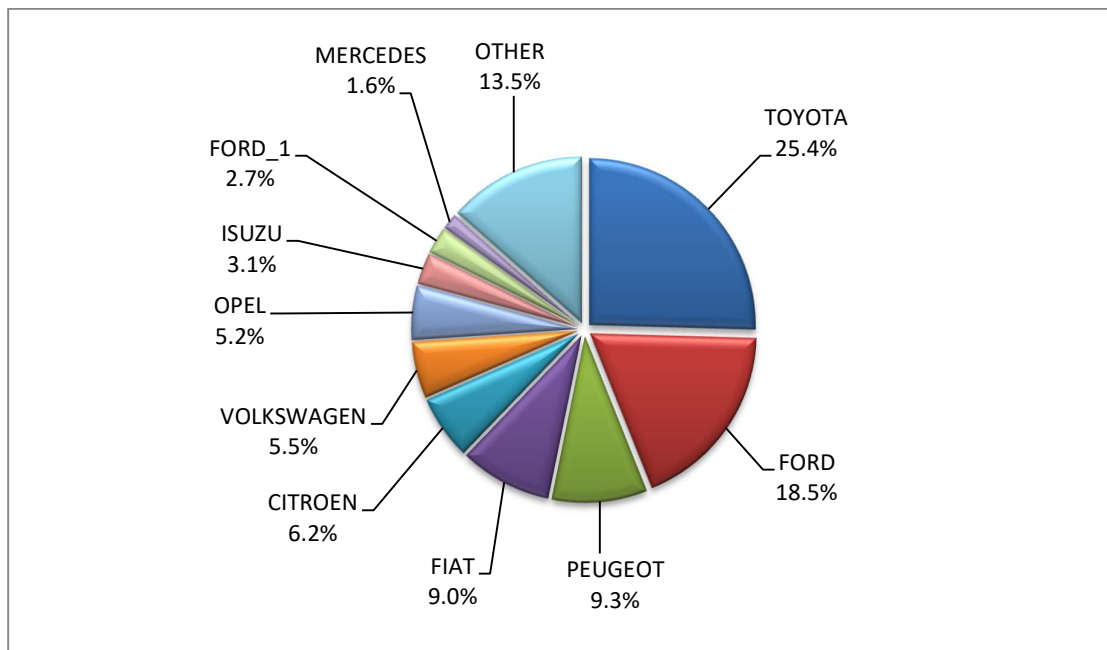


Table 6
Sales of new and used buses by make: October 2025 and January - October 2025

Make	Buses			
	October		January - October	
	new	used	new	used
AUNDE	-	-	-	1
BLUEBUS	-	-	2	-
BMC	-	-	-	1
BOVA	-	4	-	35
CAR-BUS.NET	-	-	-	1
ERDUMAN	-	-	1	-
EVOBUS	-	-	-	2
FORD	27	3	54	24
GULERYUZ	-	-	-	1
HIGER	-	-	2	1
IRISBUS	-	1	-	8
IRISBUS, IVECO, IVECO BUS, HEULIEZ, HEULIEZ BUS	14	-	61	-
IRIZAR	-	-	2	4
ISUZU	-	-	-	7
ISUZU, ANADOLU ISUZU, TURKUVAZ, TURQUOISE, AIOS, AOS, GLOBUS	-	-	22	-
ISUZU, AOS, GLOBUS, AIOS	1	-	6	-
IVECO	-	-	2	5
JONCKHEERE	-	-	-	1
KARSAN	-	-	2	-
KING LONG	2	-	7	-
KING LONG, RHODIUM	1	-	6	-

Table 6 (cont)
Sales of new and used buses by make: October 2025 and January - October 2025

Make	Buses			
	October		January - October	
	new	used	new	used
MAN	9	4	146	61
MAN/NEOPLAN	-	1	4	6
MENARINIBUS	-	-	20	-
MERCEDES	3	27	110	415
MERCEDES ¹	11	-	187	3
MERCEDES ²	1	1	11	16
MERCUS	-	-	-	1
NEOPLAN	-	3	5	22
OPEL	-	-	-	1
OTOKAR	1	2	3	4
RENAULT	-	-	-	1
SAURER	-	-	-	1
SCANIA	-	-	-	4
SCANIA ²	1	-	1	1
SETRA	-	6	-	57
SOLARIS	-	-	-	14
TEMSA	2	-	67	26
VAN HOOL	-	-	-	7
VISION	-	-	-	2
VOLKSWAGEN	-	-	-	1
VOLVO	-	-	-	6
VOLVO ²	1	-	1	-
XIAMEN KING LONG	-	2	-	4
YUTONG	-	-	101	-
TOTAL	74	54	823	744

1 : With 2nd/3rd stage manufacturer in Greece.

2 : With 2nd/3rd stage manufacturer abroad.

Graph 12. Sales of new buses by make (January – October 2025)

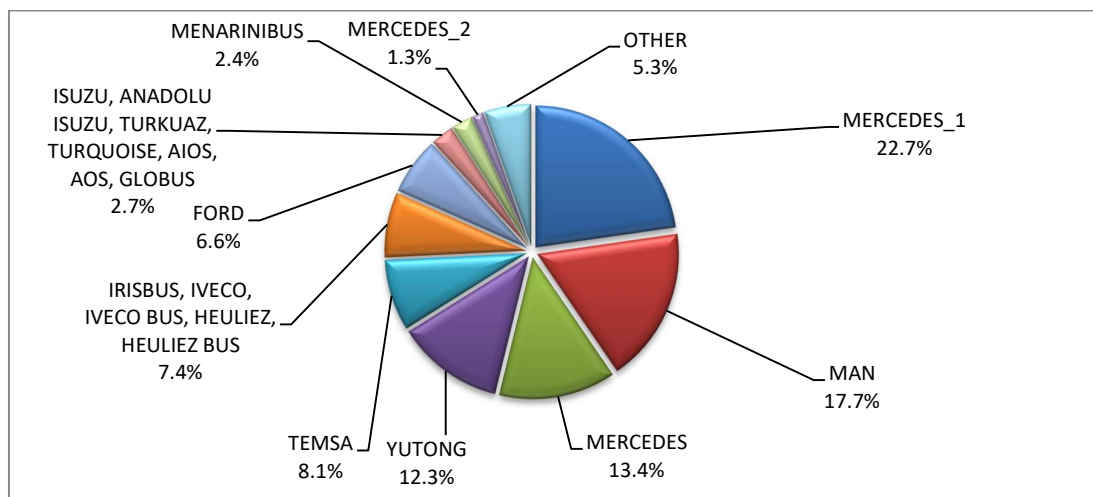


Table 7

Sales of new and used motorcycles by make or manufacturer: October 2025 and January - October 2025

Make	Motorcycles			
	October		January - October	
	new	used	new	used
AIXAM, MEGA, MINAUTO	-	-	-	1
AJP	-	-	2	-
ALDY	-	-	-	1
ALPHA MOTORS	-	-	-	1
APRILIA	73	2	718	39
ARENA, ELYX, MIFUN, VMOTO	1	-	3	-
ARIIC, JINLANG, KEEWAY, ARORA, KL, UM	12	-	26	-
ARMONY, ARORA, BUKE, BULL MOTORS	-	-	2	-
ARORA, BUKE, BULL MOTORS, BUTTERFLY	-	-	-	1
ARORA, MOJITO, KANUNI, YUKI, GT Union, ALPHA MOTORS, ADAMOTO, TEYIN, TIANYING, XINBEN, SANBEN	-	-	1	-
ASUS, Joyrace, Maxon, Gineva Moto, Berini, ROMET MOTORS, ROUTER, ZIPP, TOROS, LuXXon, Motobi, Rivero	6	-	83	-
ASUS, YUKI, RATO, DOCKER, MIGLIORI, VICTORY, AVETA	1	-	225	-
BAJAJ	1	-	24	-
BAOTIAN, SUPERKING, WALTON, HONDA	-	-	-	1
BAROSSA MOTOR	-	-	-	1
BASHAN, AMGroup, AMGroup Bike, DON, IRBIS, WORKER BEAR, Nomik ATV 2	-	-	28	-
BAW, NIEVE, RELIVE, ALLVIEW, Yunglog Motors, TERA	1	-	15	-
BENDA, KEEWAY, BDMOTO	1	-	1	-
BENELLI	16	1	412	8
BENZHO	-	-	-	1
BETA	7	1	81	10
BIC BEAR CHOPPER	-	1	-	1
BLUESHARK	-	-	4	-
BMW	89	34	1,032	428
BNECOZONE, Ecozone, CHAOYA, EMOTO, ERIDE, Trotty, VELECO, VITALE	-	-	1	-
BOMBARDIER RECREATIONAL PRODUCTS INC (BRP)	2	-	4	5
BONTU	1	-	1	-
BRIXTON	13	-	117	1
BUGGYCAR, HOLLYBEACH, ITALCAR	-	-	7	-
CECTEK	-	-	-	1
CENNTRO	-	-	3	-
CFMOTO	262	1	3,668	6
CFMOTO, KEEWAY	1	-	15	-
CFMOTO, MONDIAL, DERRACE	-	-	-	1
CFMOTO, ZEEHO	26	-	55	-
CHANGJIANG	-	-	1	-
DAELIM	-	-	1	6
DAYANG, DAYTONA MOTORS, NIPPONIA, DYMOTO, VEEROAD, EVO MOTORS, MH MOTORCYCLES, FKM, FKMOTORS	2	-	53	-
DAYANG, DAYTONA MOTORS, NIPPONIA, KUBA, VEEROAD, SUMCO, CETUR, RUTEC	45	-	533	1
DAYANG, DAYTONA MOTORS, NIPPONIA, VEEROAD, DOCKER, RKS, LUOJIA	21	-	307	-
DAYANG, DAYTONA MOTORS, NIPPONIA, VEEROAD, RUTEC, CETUR, SALCANO, LUOJIA, GA CE LA, HIGHLAND, NORTH	129	-	1,470	-
DAYANG, DYMOTO, DAYTONA MOTORS, NIPPONIA, MH MOTORCYCLES, ORCAL, SUMCO, KUBA, RKS, RUTEC, AJS	33	-	306	2
DAYANG, ECOCREMO, ECOOTER, ECOOTOR, AGM, ORCAL, SUMCO	1	-	4	-

Table 7 (cont)

Sales of new and used motorcycles by make or manufacturer: October 2025 and January - October 2025

Make	Motorcycles			
	October		January - October	
	new	used	new	used
DAYANG, NIPPONIA, DAYTONA MOTORS, VEEROAD, SUMCO, DOCKER, MH MOTORCYCLES	-	-	13	-
DAYTONA MOTORS, DAYANG, NIPPONIA, DYMOTO, DOCKER, VEEROAD, EVO MOTORS, SUMCO, CETUR, HANSOM, RUTEC	1	-	28	-
DAYTONA MOTORS, EVO MOTORS, LONGJIA, ORCAL, NECO, VGA, ROMET MOTORS, DRAX, MONDIAL, JUNAK, ONLINE	-	-	38	-
DAYTONA MOTORS, PINK, IMF, VIKEBIKE INNOVATIVE MOVEMENT	-	-	4	-
DERBI	-	-	-	2
DINGYITOP, YUHANZHEN, ECO HIGHWAY, YASHIXIN	-	-	3	-
Dofern, Frison scooter, skootec, passion, Elektra EV, CJR	-	-	5	-
DONGBEN, GANCIN, DIRONG, KRAL	4	-	27	-
DOOHAN, TRINITY, PINK, DOUHA, CECOTEC	7	-	33	-
DUCATI	19	5	199	68
E.F.O., GOLDEN LION, SAKURA, ARTISAN, Fauro, ETALIAN, Viverra, Varaneo, Kito, E-mio, velca, E-KUMA, BOLIDE	2	-	6	-
EAGLE	-	-	-	1
EASYCOOL, HECHHI, HURBA, Mitt, Blu:s, Luxxon, ROMET, VORTEX By Gingabike	-	-	2	-
ECOOTER, ETRIX, AGM, DRAX, ORCAL, SUMCO	1	-	3	-
ECOSHIFT	9	-	10	-
EFUN, ZAP, FRISON, easy-watts	6	-	51	-
EMBUGGY, EVANGEL, The Original BeachBuggy, Beach Buggy	11	-	50	-
ERIDE ELECTROMOBILITY, BEEV, YUNLONG MOTORS, EasyFleet, Pacta Car, DESNER, WANERS, MAXVIEW	1	-	2	-
E-TUK FACTORY	-	-	3	-
EXPLORER	-	-	-	1
FANGPOWER, Kontio Motors	3	-	19	-
FANTIC MOTOR	-	1	12	2
FD MOTORS, FASPIDER, Daytona Motors, EVO Motors, Veeroad	-	-	2	-
FD MOTORS, FASPIDER, DAYTONA MOTORS, NIPPONIA, QUANTYA	-	-	2	-
FENGCHENG, FULLCHEER, Barman-pakro, NITSURO, VOLDORK, SPIMRI, Elektra EV, EKOE, BITMART	-	-	4	-
GASGAS	1	1	11	12
GILERA, PIAGGIO	-	-	-	1
GOCCIA, E-ZI, AGM, SFM, VGA, SACHS, SAXXX, KEEWAY, Vengo, Viarelli, EZI, E ZI	2	-	13	-
GOLDEN LION, SAKURA, ARTISAN, ETALIAN, E-mio, Fauro, Kito, Varaneo, Virerra, E.F.O., BOLIDE, E-KUMA, velca	2	-	21	-
GPX	2	-	83	-
GUSITE, RKS, KUBA, KOKO, KAVIR, BECANE, EVO MOTORS, Daytona MOTORS, SUMCO, SKYJET	1	-	23	-
GUSITE, RKS, KUBA, SKYJET, KOKO, Senzo, EVO MOTORS, JM MOTORS, Luxxon, PRIKE, USTA, DENZO	-	-	1	-
Haojiang, ZONTES, TAYO, Sharpon, IFINO, KIDEN, ZHONGYU, CUBTOM, DIYUN, NAMIN, TIM DERVI, VUKA, THUMP, R-ipper	-	-	16	-
HAOJIN, LETBE, KUBA, RKS, SKYJET	11	-	217	-
HARLEY DAVIDSON	3	10	28	121
HER CHEE, ADLY MOTO	-	-	-	1
HONDA	1,138	71	12,917	557
HOOOON, PICKMAN	-	-	1	-
HORWIN	4	-	23	-

Table 7 (cont)

Sales of new and used motorcycles by make or manufacturer: October 2025 and January - October 2025

Make	Motorcycles			
	October		January - October	
	new	used	new	used
HSUN	-	-	-	2
HSUN , HISUN, APACHI, Q-MOTO, INCA, KMS, ICHIBAN, FORSAGE, CROWN, POLAR,QLINK,DRAGON, DORTON	-	1	-	1
HSUN, HISUN, APACHI, Mx, MASAI, HYTRACK, TRAPPER, PUMAREX, ASYAMOTOR, DAYTONA MOTORS, GEON, KRAL	-	-	2	-
HUSQVARNA	9	5	68	39
HYOSUNG	2	-	5	1
IIFSTEV, IIFSTMUTO	-	-	2	-
INDIAN MOTORCYCLE	1	1	23	8
ITALJET	1	-	7	-
JCADI, TILGREEN, Grupo Invicta MOTOR, e-broh, FAURO	1	-	2	-
JIAJUE, JOYRACE, GINEVA MOTO, BERINI	-	-	1	-
JIAJUE, Joyrace, MAXON, Gineva Moto, ASUS, TURBHO, BTC, AGM, ROMET MOTORS, ROUTER, ZIPP, TOROS	49	-	219	-
JIAJUE, Joyrace, MAXON, Gineva Moto, RDB, TURBHO, BTC, AGM, ROMET MOTORS	-	-	5	-
JIAYUAN	4	-	29	-
JNEN, JUNENG, ZIPP, MOTORAN, HORS, FLEX TECH, ALPHA-MOBIL, ROUTER, PEDA MOTOR, PEDA, APACHI, ARORA	29	-	114	-
JNEN, JUNENG, ZIPP, MOTORAN, ONE, RAZZO, FLEX TECH, TOROS, JUNAK, TURBHO, PEZAL, ALPHA-MOBIL	20	-	248	-
JNEN, JUNENG, ZIPP, MOTORAN, PUZEY, ALPHA-MOBIL, HORS, ROMET, JST, JMT, PEDA MOTOR, PEDA, APACHI	19	-	37	-
JONWAY, CKA EUROCKA, IONA, HUIBANG, DAYTONA MOTORS, GECO	-	-	4	-
JONWAY, SHENKE, HUIBANG, JMSTAR	-	-	1	-
KAINING	-	-	1	-
KAWASAKI	25	7	217	90
KAYO, MONDIAL, DAYTONA MOTORS	2	-	84	-
KEEWAY	22	-	128	1
KEEWAY, JINLANG, ARIIC, ARORA, KL	2	-	88	-
KEEWAY, KUBA	-	-	16	-
KEEWAY, LONGJIA	1	-	75	-
KEEWAY, ORCAL, NECO, ALFASCOOTERS	32	-	152	-
KEEWAY, RKS, KUBA, SKYJET, STELS,MORBIDELLI	4	-	72	-
KEREN, Seyyara	-	-	1	-
KREIDLER	-	-	-	1
KSR MOTO AUSTRIA, MOTRON MOTORRAD	-	-	17	-
KTM	38	17	415	230
KUBA, MH MOTORCYCLES, MGB, SHINERAY, Daytona Motors, MASH	-	-	8	-
KUBA, RKS, SKYJET, LETBE	1	-	33	-
KWANG YANG	-	-	-	1
KYMCO	75	22	1,167	292
LAMBRETTA	-	-	2	-
LEIMO, ZF-KY, HUAWIN, ARORA, MOJITO	2	-	16	-
LETBE, RKS, RKS LETBE, HAOJIN, KUBA, SKYJET	36	-	162	-
LEXMOTO, ROMET, NECO, LUXXON, PRIKE, MAXON	74	-	615	1
LIFAN, HONLEI, QIPAI, SKYGO, GTS, PINK, Daytona MOTORS	-	-	1	-
LIFAN, QIPAI, SKYGO, TAKTAS, TAKTAS MOTOR	7	-	383	-
Lingzhida, LINZDA, LINDN, LINYI, LONGMAO, NLIGHT	1	-	2	-
LINHAI, KUBA, ONLINE, LHY	-	-	6	2
LML	-	-	-	1

Table 7 (cont)

Sales of new and used motorcycles by make or manufacturer: October 2025 and January - October 2025

Make	Motorcycles			
	October		January - October	
	new	used	new	used
LOJO, RAINWOLL	-	-	8	-
LONCIN, KINLON, LONGTING, KUBA, YUKI, MONDIAL, STMAX, KANUNI, MOTORAN, ASYA, QUSWA, PUMAREX, RALLY USA, MOD, CCM	-	-	37	-
LONCIN, KUBA, RKS, ITALIKA, SUNRACE, SKY, MALAGUTI, SUPERBIKE, ROCKET, NOVELBAT, TIGERMOTO, GREEN	1	-	14	-
LONCIN, KUBA, RKS, ITALIKA, VOGÉ, SUNRACE, SKY, MALAGUTI, ROCKET, SUPERBIKE, NOVELBAT, TRIDIAMOND	5	-	39	1
LONCIN, VOGÉ, VOGÉPRO	177	-	2,393	-
LONGJIA, ORCAL, NECO, ALFASCOOTERS, VGA, ROMET MOTORS, BARTON MOTORS, OVER, CAROLYN, KANUNI, BTC	3	-	101	1
LONGJIA, ORCAL, NECO, VGA, ROMET MOTORS, DRAX, MONDIAL, JUNAK, ONLINE, MOTOWELL, JORDON, GABELLI	25	-	179	-
LONGJIA, ORCAL, NECO, ALFASCOOTERS, VGA, ROMET MOTORS, BARTON MOTORS, OVER, CAROLYN, KANUNI, BTC	-	-	-	1
LONGJIA, VICTORIA, VICTORIA MOTORRAD, ORCAL, NECO, VGA, BTC, ALFASCOOTERS, ROMET MOTORS	69	-	625	-
LONGJIA, Zündapp, VGA, NECO, BTC, AGM, ALFASCOOTERS, ROMET MOTORS, Kudaki, BARTON MOTORS, OVER BIKES	5	-	88	-
LUQI, TWISTER WHEEL, SPYDER WHEELZ, DJJD, GTS, TEKUON, Eway, Emoto, Bikers, i-coco	-	-	1	-
LVNENG	-	-	9	-
LVTONG, Graf Carello, HAMATZU, SELVO, EDOM CAR, LEM, EEMOG, GREEN CAR	-	-	1	-
LONGJIA, ZUNDAPP, VGA, NECO, BTC, ALFASCOOTERS, ROMET MOTORS	1	-	16	-
MACBOR, COLOVE, DAYTONA MOTORS, ZF-KY, online, KOVE	43	-	92	-
MACBOR, RVM, COLOVE, DAYTONA MOTORS, ZF-KY, online, KOVE	1	-	113	-
MALAGUTI	30	-	215	1
MARSHELL	-	-	8	-
MASAI	-	-	-	1
MBK	-	-	-	3
MBP, MORBIDELLI, KEEWAY, KUBA, RKS, STELS	4	-	52	1
MELEX	1	-	6	-
MG MOTO	-	-	-	1
MGK HM	87	-	1,950	1
MICRO	1	-	8	-
MILG	-	-	3	-
MONDIAL, UGUR, YIBEN, DERRACE, ISILDAR, TGB, APACHI, ISILDAR APACHI	-	-	1	-
MONTESA	1	-	2	-
MORBIDELLI, KEEWAY, MBP, STELS, RKS	1	-	1	-
MORBIDELLI, MBP, KEEWAY, KUBA, RKS	10	-	151	-
MOTA	-	-	1	-
MOTIVE POWER	-	-	-	1
MOTO GUZZI	6	-	88	1
MOTO MORINI	6	-	41	-
MOTOBECANE	-	-	-	1
MOTRON MOTORRAD, ZONGSHEN	1	-	13	-
MURTAS, VELIMOTOR, RONGJUE, PINK, BR SPORT, INVICTA ELECTRIC	-	-	1	-
MV AGUSTA	1	3	2	7
NERVA	1	-	3	-
NIU, NUUV	-	-	10	1
ODES	-	-	56	-

Table 7 (cont)

Sales of new and used motorcycles by make or manufacturer: October 2025 and January - October 2025

Make	Motorcycles			
	October		January - October	
	new	used	new	used
OPAI	1	-	2	-
ORCAL, SOMOTO, AIS, SENKE, HERALD, ITALJET, WACCO, MOTOBİ, CLEVELAND CYCLEWERKS ACE, MERCURY, SAXXX, SFM	-	-	2	-
PEUGEOT	19	1	296	10
PIAGGIO	832	23	8,597	291
PILOT CAR	-	-	9	-
POLARIS	-	-	16	3
PONY, BAW 1, BAW 2, BAW 3, N1, N2, Allview	-	-	1	-
QINGQI, YUKI, KARCHER, DAYTONA, SINNIS, KREIDLER	-	-	-	2
QJ, QJIANG, KEEWAY, LEONE, RKS, BENELLI, EMPIRE KEEWAY, KUBA	-	-	1	1
QJ, QJIANG, QJMOTOR, B MOTOBİ, QJTEC, LIFAN, GTS, DAYTONA MOTORS, SIMONINI MOTO, PINK, RKS	10	-	581	-
QJ, QJMOTOR, B MOTOBİ, QJTEC, RKS	240	-	1,619	-
QJ, QJMOTOR, B MOTOBİ, QJTEC, RKS, KUBA, SKYJET	17	-	20	-
QUADRO	-	-	-	1
RATO, ALTAI, MIGLIORI, DOCKER, ASUS, AVETA, BRIXTON MOTORCYCLES, KUBA, RKS, GENERIC, LAMBDA MOTORCYCLES,	3	-	64	-
RATO, AVETA, NCX MOTO, ALTAI	-	-	25	-
RATO, YUKI, ASUS, DOCKER, MIGLIORI, VICTORY, AVETA, ALTAI, KUBA, RKS, BRIXTON MOTORCYCLES	13	-	13	-
RAY ELECTRIC MOTORS	-	-	2	-
REDMOTO	-	1	-	1
REGIS MOTORS	2	-	2	-
RENAULT	-	-	-	2
RENLI, ORION	1	-	20	-
REWACO	-	-	-	1
REX	-	-	-	1
RIEJU, DRAC	-	1	7	4
RIYA, RYMOTO, KUBA, RKS, LEXMOTO, MITT, ALPHA MOTORS, IMF, ROMET, ZIPP, ARORA, ZORRO, MOJITO	-	-	70	-
ROYAL ENFIELD	49	-	473	1
Royalloy, Royal Alloy, RA	1	-	10	-
SACIN, SKYTEAM, SNAKEMOTORS, CONAN, KEEWAY, MONKEY BIKES, TRITON, ROMET, ZIPP, SUMCO, BLUROC MOTORCYCLES	1	-	4	-
SAIGE, STMAX, YUKI, KRAL, JPN, Mytos Motorcycles, VIKEBIKE	-	-	3	-
SAKURA, GOLDEN LION, ARTISAN, Fauro, ETALIAN, Viverra, Varaneo, Kito, E-mio, velca, E.F.O, E-KUMA, BOLIDE, LINZE	-	-	7	-
SEGWAY	4	-	139	-
SHANGBO	-	-	1	-
SHERCO	5	1	15	12
SHINERAY, SWM	1	-	11	-
SILENCE, SCUTUM, ETRIX	9	-	36	-
SKYTEAM, SACIN, CSR, METALCO, SOKUDO, BAZUKA, MINICO, MOTOSBASI, MOTOS BORDOY, SUMKO, ROXON, MONKEY BIKES	2	1	20	1
STARK	3	-	18	-
SUZUKI	74	11	882	147
SYM	1,065	4	12,955	92
SYMCO, SANYOU, MH MOTORCYCLES, NOX, KL, KL MOBILITY	-	-	4	-
TAIZHOU ZHONGNENG	-	-	-	3
TARO, JUNAK, BARTON MOTORS, ORCAL, Lexmoto, MITT, NECO, WOTTAN, MAGPOWER, ADAMOTO, MAXON, MAX-ON, TRMOTOR, CHUANL	-	-	20	1

Table 7 (cont)

Sales of new and used motorcycles by make or manufacturer: October 2025 and January - October 2025

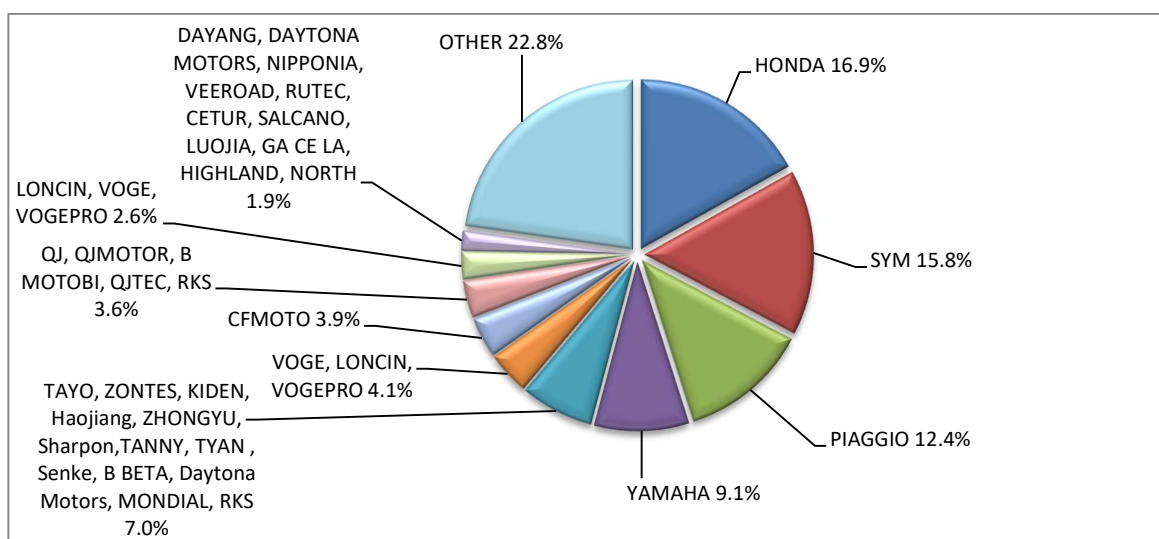
Make	Motorcycles			
	October		January - October	
	new	used	new	used
TARO, TRMOTOR, CHUANL, JUNAK, BARTON MOTORS, ORCAL, Lexmoto, MITT, NECO, WOTTAN, MAGPOWER, ADAMOTO MOTORCYCLES	-	-	3	-
TARO, TRMOTOR, CHUANL, JUNAK, Lexmoto, BARTON MOTORS, MITT, NECO, MAXON, WOTTAN MOTOR, MAX-ON, MOTOB, MOTO B	-	-	40	-
TAYO, HAOJIANG, ZHONGYU, THUMP, THUMPSTAR, KIDEN, ZONTES, Junak, SENKE, TANNY, TYAN, ROMET, ROMET MOTORS, ROUTER	5	-	120	-
TAYO, ZONTES, KIDEN, Haojiang, ZHONGYU, Sharpon, TANNY, TYAN, Senke, B BETA, Daytona Motors, MONDIAL, RKS	472	-	2,542	-
TAZZARI	-	-	1	-
TEYIN, TIANYING, XINBEN, SANBEN, ALFASCOOTERS, Alpha Motors, APACHI	1	-	31	-
TGB	-	-	14	2
TIANYING, RIYA, HONGYUNDA, TYM, HONLING, SANBEN, XINBEN, TAMCO, ALISON, DMK MOTORS	-	-	4	1
TIANYING, RIYA, HONGYUNDA, TYM, HONLING, TAMCO, ALISON, DMK MOTORS, WLIE, LEEWAY, WLXQ, APGmoto	-	-	10	-
TIANYING, RIYA, HONGYUNDA, TYM, SANBEN, XINBEN, TAMCO, ALISON, DMK MOTORS, WLIE, LEEWAY, WLXQ	1	-	25	-
TIANYING, RIYA, SANBEN, TEYIN, TYM, Alfascooters, JORDON, YUKI, YAMASAKI, IVA, SENZO, KillerBee	-	-	10	-
TIANYING, RIYA, SANBEN, TEYIN, TYM, BERMOTO, Capirelli, Gemini, KENTOYA, LGW MOTO, Masaru, Romet, VENTO	-	-	5	-
TINBOT, KOLLTER, MASAI, INTO, VIARELLI, EDRIVE, DuroCar, MGK HM, Fauro, BRINCO	-	-	3	-
TINBOT, KOLLTER, MASAI, MS ENERGY	-	-	2	-
TRIUMPH	46	-	479	23
TRIUNI, TRIGOBIKE, LUCKING-MOPED, CSE-EV, JSE-MOTO, RETELLI, BIKEMITE, MOBI-E, U-MOB, VELCAMOTOR, DUKKA, LUYING	1	-	5	-
TROMOX	-	-	1	-
TUK TUK FACTORY	-	-	-	2
UM	6	-	178	-
VELIMOTOR, VOLTAMP, ALTUX, KKL HITECH, WHEELN WATER TECH, ALTUS, NUVEAU MONDE, EN MOTO, YOUNBEE MOTORS, KKL	1	-	2	-
VMOTO	1	-	11	-
VMOTO-SOCO, E-MAX, VMOTO, SUPER SOCO	4	-	34	-
VOGE, LONCIN, VOGEPRO	276	-	1,476	1
WANGYE, SANBEN, UM, KENOS, SUPERBYKE, MDC, MISTRAL	3	-	54	1
WONJAN, THRUST MOTOR, WMOTO, KEEWAY, TD	7	-	187	-
WOTTAN	-	-	-	1
WUZHENG	-	-	2	-
WXEVERBRIGHT, EVERBRIGHT, VITALE	-	-	4	-
XEV, X, XEV YOYO	3	-	55	-
XIANGSHUAI, Hanyang, DLSYM, MITT, Jet, SHARMAX, JM, Rolling, SM, Zenith, GROZA, TOGO	2	-	2	-
XINRI, SUNRA, APACHI, ISILDAR, ISILDAR APACHI, Wayscral, KRAL	2	-	14	-
YADEA	3	-	7	-
YAMAHA	610	55	7,120	630
YATIAN, GDYATIAN	2	-	2	-
YINXIANG, KENBO, VENOM, CHEETA, ZIPP, NEMO, FEKON, ANATOLIA, CANBO	-	-	4	-
YIYING	-	-	-	2
ZERO MOTORCYCLES	1	-	4	-
ZHIDOU, ZD, RKS	5	-	16	-

Table 7 (cont)

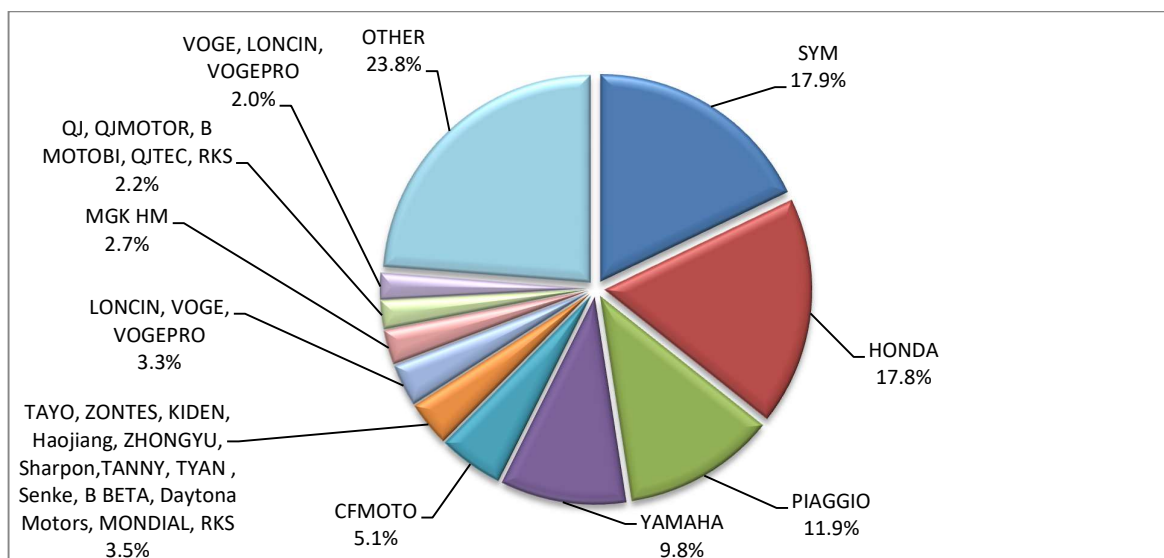
Sales of new and used motorcycles by make or manufacturer: October 2025 and January - October 2025

Make	Motorcycles			
	October		January - October	
	new	used	new	used
ZHONGNENG, ZNEN, AGM, AJS, YUKI, COLIBRI, EUROCKA, BTC, NOVA MOTORS, LEXMOTO	-	-	1	-
ZHONGNENG, ZNEN, AGM, BTC, CLS, COLIBRI, DAYTONA MOTORS, DERRACE, DOCKER, JM MOTORS, KUBA, La souris, LEXMOTO	16	-	199	-
ZHONGNENG, ZNEN, AGM, YUKI, COLIBRI, LEXMOTO, Minimoto, NECO, ROMET MOTORS	1	-	13	-
ZNEN	-	1	-	3
ZONGSHEN, ZONGSHENCYCLONE, ZONSEN, Lexmoto, MONDIAL, SINNIS, SPARKSTER, MACBOR, VORTEX	1	-	4	-
ZUNDAPP	-	-	-	1
ZXMCO, NIJ, DAYTONA MOTORS, PINK	3	-	15	-
TOTAL	6,734	283	72,473	3,215

Graph 13. Sales of new motorcycles (October) 2025)



Graph 14. Sales of new motorcycles (January – October 2025)



EXPLANATORY NOTES

Survey on the issuing of new road motor vehicle circulation licenses	The survey on the issuing of new motor vehicle circulation licenses is a census survey. The released data give information, at country level, on the brand and type of the motor vehicle, as well as whether it is new or used. The survey does not include vehicles that move on rails, trolley busses, agricultural tractors and machinery. In addition, the following are excluded: all motor vehicles of the Armed Forces, Police, Fire Brigade, State Services, Diplomatic Corps, Foreign Missions, and Invalids of Wars, as well as motorcycles with a cylinder capacity less than 50 cc.
Legal basis	Law 3832/2010
Reference Period	October 2025
Coverage	The production of monthly data is based on the registers held by the Ministry of Infrastructure, Transport and Networks, which records all the monthly changes observed in the vehicle registration licenses at country level.
Definitions	<p>Road motor vehicle is any vehicle that, irrespective of the number of wheels, is moved by an engine and is designed to transport persons or cargo or both of them, either they are on the same single vehicle or on a trailer carried by the main motor vehicle.</p> <p>New road motor vehicle is any motor vehicle that is registered for the first time in Greece during the reference month and has not been put into circulation in any other country.</p> <p>Used motor vehicle is any motor vehicle that is registered for the first time in Greece and has been imported as a used one from abroad</p> <p>Passenger motor vehicle: it is a motor vehicle designed to carry mostly people, having no more than 9 seats, including the driver's seat.</p> <p>Bus: it is a motor vehicle, which is designed to carry mostly people, having more than 10 seats, including the driver's seat. In the corresponding tables of this announcement, this category also includes articulated buses.</p> <p>Lorry: it is motor vehicle designed to carry mostly cargo. In the corresponding tables of this announcement, this category also includes tractors, tow trucks, articulated tractors, and trucks with trailers.</p> <p>Motorcycle: any two-wheeled motor vehicle, with or without sidecar, with maximum authorized design speed over 45 km/h, or in case it is powered by a combustion engine, with a cylinder capacity of 50 cc or over. In the corresponding tables of this announcement, this category also includes the three-wheeled motor vehicles – motor tricycles.</p> <p>Tricycle motor vehicle: it is a motor vehicle with three symmetrical wheels with maximum authorized design speed over 45 km/h, or in case it is powered by a combustion engine, with a cylinder capacity over the 50 cc. This category also includes four-wheel vehicles, except the light four-wheel motorcycles, whose empty vehicle tare (excluding the weight of the fuel or mixture of fuel-oil or the weight of the batteries for electric cars) is up to 400 kg in the case the vehicle is designed for passenger use or up to 550 kg in case the vehicle is designed to carry cargo and whose engine is up to 15KW.</p>
Methodology	Exhaustive Survey. The primary data derive from the Ministry of Infrastructure, Transport and Networks and are based on the issuing of new circulation licenses as they are registered by the Regional Offices for Transport and Communications.
References	More information (graphs, tables) concerning the survey on the issuing of new motor vehicle circulation licenses are available on the webpage of ELSTAT, www.statistics.gr , under the link http://www.statistics.gr/en/statistics/-/publication/SME24/-