



PRESS RELEASE

SURVEYS ON SECONDARY GENERAL AND VOCATIONAL EDUCATION END OF SCHOOL YEAR 2020/2021

The Hellenic Statistical Authority (ELSTAT) announces data on Secondary General and Vocational Education deriving from the relevant surveys for the end of the school year 2020/2021. In the first part of this press release, data on lower and upper secondary education schools are presented, the second part includes data on the Ecclesiastical Secondary Education Schools and Second Chance Schools, as branches of the Secondary General Education, while in the last part data on Vocational Upper Secondary Schools (EPAL) and Vocational Schools (EPAS) are presented.

SECONDARY GENERAL EDUCATION

The data collected from the surveys on Secondary Education, pertaining to lower and upper secondary education schools, can be summarized as follows:

- In lower secondary schools, **school units** in the school year 2020/2021 amounted to 1,825 while in 2019/2020 amounted to 1,818. In upper secondary schools, **school units** in the school year 2020/2021 amounted to 1,355 compared with 1,347 in 2019/2020 (Tables 2 and 4, respectively);
- **Teaching staff** in the school year 2020/2021 compared with 2019/2020 increased from 39,524 to 41,067 in lower secondary schools and from 23,914 to 24,353 in upper secondary schools (Tables 2 and 4, respectively);
- **The number of pupils enrolled** in the school year 2020/2021, compared with the corresponding number in the school year 2019/2020, increased from 320,822 to 328,582 in lower secondary schools and decreased from 233,627 to 230,295 in upper secondary schools (Tables 3 and 5, respectively);
- **The number of graduates** in the school year 2020/2021, compared with the corresponding number in the school year 2019/2020, increased from 101,607 to 104,767 in lower secondary schools and decreased from 76,998 to 74,032 in upper secondary schools (Tables 3 and 5, respectively);
- **The ratio of teaching staff to pupils**, in the school year 2020/2021, was 1 teacher for 8.0 pupils in lower secondary schools and 1 teacher for 9.5 pupils in upper secondary schools, while for the school year 2019/2020 the corresponding ratio was 1 to 8.1 and 1 to 9.8 respectively (Tables 2,3,4 and 5);
- The **Region of Attiki** accounted for the largest share of pupils enrolled in Secondary Education in Greece, with 34.8% in lower secondary schools and 37.4% in upper secondary schools (Graphs 2 and 3 respectively).

Information on methodological issues:

Division of Sectoral Statistics
Section of Statistics on Education & Sports
Head of the Section: Dimitra Angelopoulou
Tel: +30 213 135 2134
e-mail: d.angelopoulou@statistics.gr

Information for data provision:

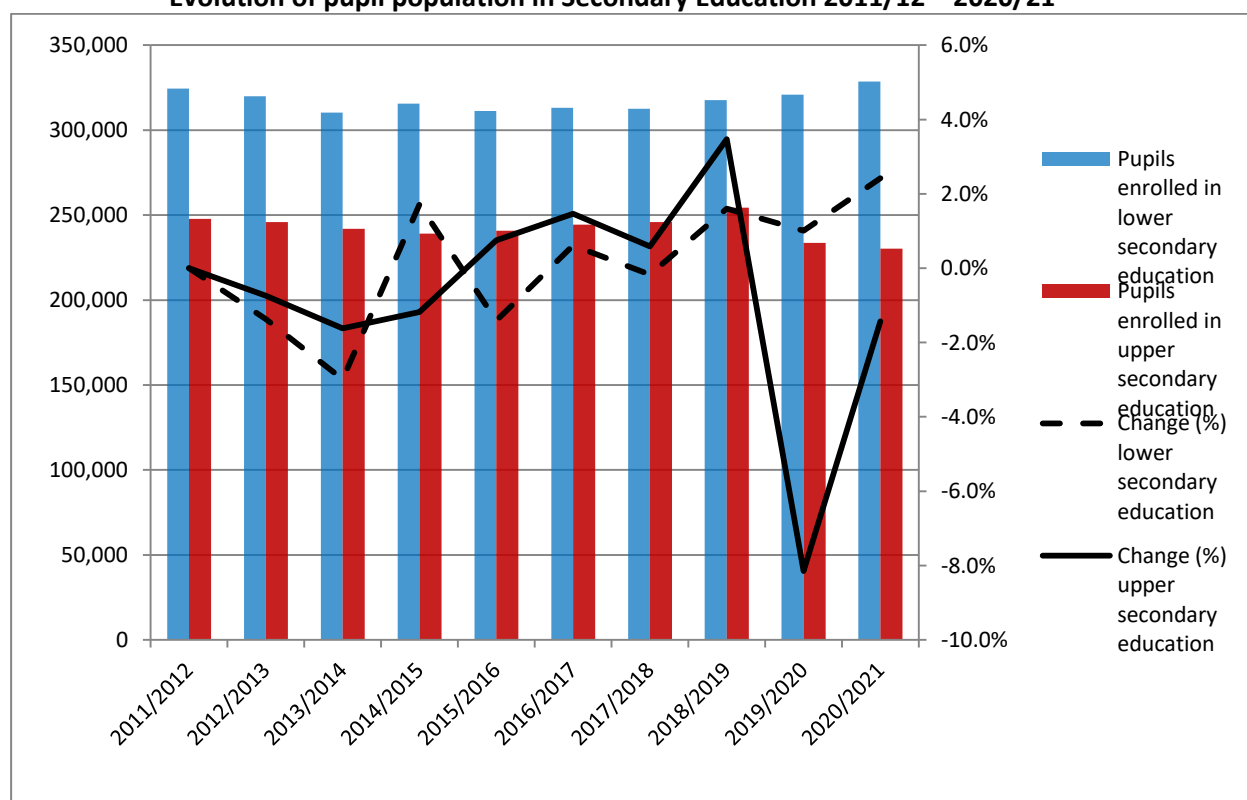
Tel. +30 213 135 2022, 2310
email: data.dissem@statistics.gr

More specifically, Table 1 and Graph 1 depict the evolution of pupil population in lower and upper secondary education during the period 2011/2012 - 2020/2021.

Table 1
Evolution of pupil population in Secondary Education 2011/12 – 2020/21

School year	Pupils enrolled ¹	
	Lower secondary education schools	Upper secondary education schools
2011/2012	324,402	247,717
2012/2013	319,950	245,892
2013/2014	310,389	241,905
2014/2015	315,702	239,055
2015/2016	311,236	240,852
2016/2017	313,130	244,386
2017/2018	312,604	245,811
2018/2019	317,622	238,968
2019/2020	320,822	233,627
2020/2021	328,582	230,295

Graph 1
Evolution of pupil population in Secondary Education 2011/12 – 2020/21



¹ Ecclesiastical secondary education schools and Second Chance schools are not included.

A. LOWER SECONDARY SCHOOLS

Tables 2 and 3 present data on the number of school units, teaching staff, pupils enrolled and graduates (Ecclesiastical Schools and Second Chance Schools are not included).

Table 2. School units and teaching staff ² (Lower secondary education)

<i>By Type of school unit</i>						
School units	Number of school units			Teaching staff		
	2019/20	2020/21	Change (%)	2019/20	2020/21	Change (%)
Public	1,724	1,727	0.2	37,196	38,559	3.7
Private	94	98	4.3	2,328	2,508	7.7
TOTAL	1,818	1,825	0.4	39,524	41,067	3.9
<i>By Region</i>						
Region (NUTS 2)	Number of school units			Teaching staff		
	2019/20	2020/21	Change (%)	2019/20	2020/21	Change (%)
Anatoliki Makedonia, Thraki	98	100	2.0	2,171	2,226	2.5
Kentriki Makedonia	291	292	0.3	6,450	6,650	3.1
Dytiki Makedonia	69	69	0.0	1,143	1,127	-1.4
Thessalia	125	126	0.8	2,906	3,002	3.3
Ipeiros	81	81	0.0	1,391	1,406	1.1
Ionia Nisia	50	50	0.0	1,096	1,110	1.3
Dytiki Ellada	143	143	0.0	2,590	2,639	1.9
Stereia Ellada	119	119	0.0	1,995	2,073	3.9
Peloponnisos	110	110	0.0	2,047	2,131	4.1
Attiki	485	486	0.2	12,401	13,063	5.3
Voreio Aigaio	54	54	0.0	1,026	1,076	4.9
Notio Aigaio	84	85	1.2	1,708	1,775	3.9
Kriti	109	110	0.9	2,600	2,789	7.3
TOTAL	1,818	1,825	0.4	39,524	41,067	3.9

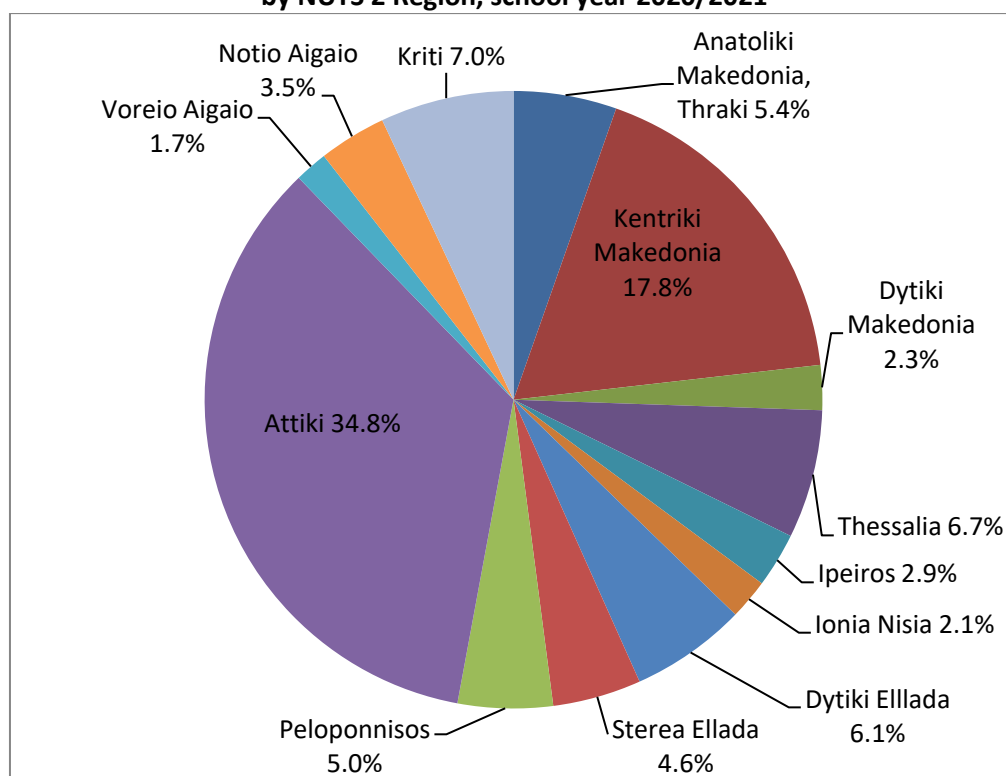
² Absent teachers are also included.

Absent teachers are the teachers with a fixed post in the school unit, who are absent for more than 20 days (due to illness, training, maternity leave, etc) and their replacement is pending, as well as the teachers who are seconded to other administrative posts of the Ministry of Education and Religious Affairs or elsewhere.

**Table 3. Pupils enrolled and graduates by type of school unit and NUTS 2 Region
(Lower Secondary Schools)**

<i>By Type of School Unit</i>						
School units	Pupils enrolled			Graduates		
	2019/20	2020/21	Change (%)	2019/20	2020/21	Change (%)
Public	304,995	311,111	2.0	96,693	99,329	2.7
Private	15,827	17,471	10.4	4,914	5,438	10.7
TOTAL	320,822	328,582	2.4	101,607	104,767	3.1
<i>By Region</i>						
Region (NUTS 2)	Pupils enrolled			Graduates		
	2019/20	2020/21	Change (%)	2019/20	2020/21	Change (%)
Anatoliki Makedonia, Thraki	17,542	17,730	1.1	5,463	5,512	0.9
Kentriki Makedonia	56,612	58,496	3.3	17,757	18,817	6.0
Dytiki Makedonia	7,775	7,706	-0.9	2,558	2,533	-1.0
Thessalia	21,617	22,108	2.3	6,871	7,003	1.9
Ipeiros	9,208	9,409	2.2	2,919	3,104	6.3
Ionia Nisia	6,674	6,918	3.7	2,127	2,217	4.2
Dytiki Ellada	19,640	19,931	1.5	6,316	6,311	-0.1
Stereia Ellada	14,912	15,232	2.1	4,753	4,957	4.3
Peloponnisos	16,312	16,331	0.1	5,193	5,232	0.8
Attiki	111,541	114,492	2.6	35,388	36,339	2.7
Voreio Aigaio	5,482	5,644	3.0	1,719	1,721	0.1
Notio Aigaio	11,377	11,618	2.1	3,684	3,766	2.2
Kriti	22,130	22,967	3.8	6,859	7,255	5.8
TOTAL	320,822	328,582	2.4	101,607	104,767	3.1

**Graph 2. Percentage distribution of pupils enrolled in lower secondary schools,
by NUTS 2 Region, school year 2020/2021**



B. UPPER SECONDARY SCHOOLS

Tables 4 and 5 present data on the number of school units, teaching staff, pupils enrolled and graduates (Ecclesiastical Schools are not included).

Table 4. School units and teaching staff ³ (Upper secondary schools)

<i>By Type of School Units</i>						
School units	Number of school units			Teaching staff		
	2019/20	2020/21	Change (%)	2019/20	2020/21	Change (%)
Public	1,261	1,262	0.1	22,058	22,216	0.7
Private	86	93	8.1	1,856	2,137	15.1
TOTAL	1,347	1,355	0.6	23,914	24,353	1.8
<i>By Region</i>						
Region (NUTS 2)	Number of school units			Teaching staff		
	2019/20	2020/21	Change (%)	2019/20	2020/21	Change (%)
Anatoliki Makedonia, Thraki	64	64	0.0	1,082	1,087	0.5
Kentriki Makedonia	209	211	1.0	3,965	3,994	0.7
Dytiki Makedonia	36	37	2.8	630	610	-3.2
Thessalia	97	97	0.0	1,513	1,472	-2.7
Ipeiros	51	51	0.0	828	821	-0.8
Ionia Nisia	36	36	0.0	486	501	3.1
Dytiki Ellada	99	99	0.0	1,536	1,535	-0.1
Stereia Ellada	92	92	0.0	1,094	1,090	-0.4
Peloponnisos	90	91	1.1	1,266	1,312	3.6
Attiki	385	389	1.0	8,823	9,225	4.6
Voreio Aigaio	42	42	0.0	510	494	-3.1
Notio Aigaio	67	67	0.0	673	675	0.3
Kriti	79	79	0.0	1,508	1,537	1.9
TOTAL	1,347	1,355	0.6	23,914	24,353	1.8

³ Absent teachers are also included.

Absent teachers are the teachers with a fixed post in the school unit, who are absent for more than 20 days (due to illness, training, maternity leave, etc) and their replacement is pending, as well as the teachers who are seconded to other administrative posts of the Ministry of Education and Religious Affairs or elsewhere.

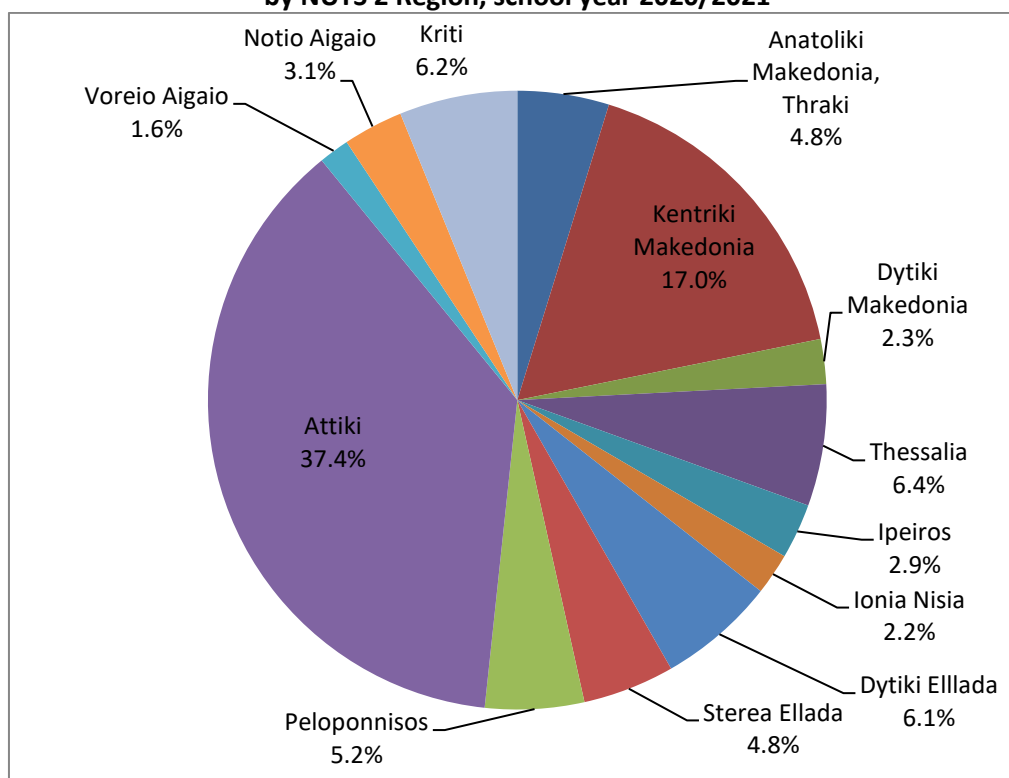
**Table 5. Pupils enrolled and graduates by type of school unit and NUTS 2 Region
(Upper Secondary Schools)**

<i>By Type of School Unit</i>						
School units	Pupils enrolled			Graduates		
	2019/20	2020/21	Change (%)	2019/20	2020/21	Change (%)
Public	219,560	215,182	-2.0	72,386	69,240	-4.3
Private	14,067	15,113	7.4	4,612	4,792	3.9
TOTAL	233,627	230,295	-1.4	76,998	74,032	-3.9

Region (NUTS 2)	Pupils enrolled			Graduates		
	2019/20	2020/21	Change (%)	2019/20	2020/21	Change (%)
Anatoliki Makedonia, Thraki	11,393	11,023	-3.2	3,756	3,582	-4.6
Kentriki Makedonia	40,138	39,250	-2.2	13,502	12,687	-6.0
Dytiki Makedonia	5,667	5,403	-4.7	1,866	1,786	-4.3
Thessalia	15,178	14,633	-3.6	5,118	4,678	-8.6
Ipeiros	6,811	6,649	-2.4	2,199	1,964	-10.7
Ionia Nisia	4,959	5,003	0.9	1,574	1,587	0.8
Dytiki Ellada	14,415	14,119	-2.1	4,814	4,549	-5.5
Stereia Ellada	11,252	11,043	-1.9	3,619	3,659	1.1
Peloponnisos	11,905	11,905	0.0	3,887	3,803	-2.2
Attiki	86,284	86,175	-0.1	28,325	27,733	-2.1
Voreio Aigaio	3,802	3,670	-3.5	1,311	1,148	-12.4
Notio Aigaio	7,344	7,214	-1.8	2,344	2,317	-1.2
Kriti	14,479	14,208	-1.9	4,683	4,539	-3.1
TOTAL	233,627	230,295	-1.4	76,998	74,032	-3.9

*revised data

**Graph 3. Percentage distribution of pupils enrolled in upper secondary schools
by NUTS 2 Region, school year 2020/2021**



ECCLESIASTICAL SECONDARY EDUCATION (LOWER AND UPPER SECONDARY SCHOOLS)

The ecclesiastical lower and upper secondary schools constitute a separate branch of the Secondary General Education. More specifically:

- **The number of school units** in ecclesiastical secondary education remained the same between school years 2019/2020 and 2020/2021 (Tables 6 and 7, respectively);
- In the school year 2020/2021 compared with the school year 2019/2020, **teaching staff**, employed in both lower and upper secondary schools, increased by 2.4% (Table 8);
- **The number of pupils enrolled** in the school year 2020/2021, compared with the corresponding number in the school year 2019/2020, recorded a 3.4% increase in ecclesiastical lower secondary schools and a 1.9% increase in ecclesiastical upper secondary schools (Tables 6 and 7, respectively);
- **The number of graduates** in the school year 2020/2021, compared with the corresponding number in the school year 2019/2020, recorded a 12.7% increase in ecclesiastical lower secondary schools and a 15.5% decrease in ecclesiastical upper secondary schools (Tables 6 and 7, respectively);

Table 6. Ecclesiastical Lower Secondary Schools

Pupils enrolled/Graduates and number of school units			
	School Year		Change (%)
	2019/20	2020/21	
Pupils enrolled	236	244	3.4
Graduates	79	89	12.7
Number of School Units⁴	7	7	0.0

Table 7. Ecclesiastical Upper Secondary Schools

Pupils enrolled/Graduates and number of school units			
	School Year		Change (%)
	2019/20	2020/21	
Pupils enrolled	473	482	1.9
Graduates	174	147	-15.5
Number of School Units⁵	10	10	0.0

Table 8. Teaching Staff in Ecclesiastical Secondary Education

Teaching Staff			
	School Year		Change (%)
	2019/20	2020/21	
TOTAL	164	168	2.4

⁴ All lower secondary schools include upper secondary school classes.

⁵ Lower secondary school units that host upper secondary school classes are included.

SECOND CHANCE SCHOOLS

Second Chance Schools are lower secondary education schools addressed to pupils that are over 18 years old. Data concerning the Second Chance Schools are presented for the school year 2020/2021 compared with school year 2019/2020 and the following can be observed:

- **School units** remained the same between school years 2019/2020 and 2020/2021 (Table 9).
- In the school year 2020/2021 compared with the school year 2019/2020, **teaching staff** increased by 4.7% (Table 10).
- **The number of pupils enrolled** in the school year 2020/2021, compared with the corresponding number in the school year 2019/2020, recorded a 6.5% decrease (Table 11).
- **The number of foreign pupils** in the school year 2020/2021, compared with the school year 2019/2020, increased by 11.0% (table 12).
- **The number of pupils of the second grade that graduated** in the school year 2020/2021, compared with the corresponding number in the school year 2019/2020, recorded a 4.7% decrease (table 13).

Table 9. Number of school units of Second Chance Schools by type

Type of school unit	Total number of school units			Of which:					
				Central Unit			Branches		
	2019/20	2020/21	Change %	2019/20	2020/21	Change %	2019/20	2020/21	Change %
TOTAL	99	99	0.0	75	75	0.0	24	24	0.0
Day	10	13	30.0	9	11	22.2	1	2	100.0
Afternoon	89	86	-3.4	66	64	-3.0	23	22	-4.3

Table 10. Number of teaching staff of Second Chance Schools, by status and gender

Status of teaching staff	Total			Males			Females		
	2019/20	2020/21	Change %	2019/20	2020/21	Change %	2019/20	2020/21	Change %
TOTAL	1,093	1,144	4.7	449	456	1.6	644	688	6.8
Principals	76	76	0.0	52	47	-9.6	24	29	20.8
Vice Principals	67	61	-9.0	40	37	-7.5	27	24	-11.1
Seconded permanent staff	261	182	-30.3	109	82	-24.8	152	100	-34.2
Fixed-Term Contract staff	689	825	19.7	248	290	16.9	441	535	21.3

Table 11. Number of pupils of Second Chance Schools by gender and grade

Grade	Total			Males			Females		
	2019/20	2020/21	Change %	2019/20	2020/21	Change %	2019/20	2020/21	Change %
TOTAL	6,625	6,194	-6.5	3,716	3,497	-5.9	2,909	2,697	-7.3
Grade A	3,463	3,162	-8.7	1,980	1,813	-8.4	1,483	1,349	-9.0
Grade B	3,162	3,032	-4.1	1,736	1,684	-3.0	1,426	1,348	-5.5

Table 12. Number of foreign pupils of Second Chance Schools by gender and citizenship

Citizenship	Total			Males			Females		
	2019/20	2020/21	Change %	2019/20	2020/21	Change %	2019/20	2020/21	Change %
TOTAL	1,168	1,296	11.0	829	907	9.4	339	389	14.7
EU Member State	145	153	5.5	102	109	6.9	43	44	2.3
Outside the EU	1,021	1,138	11.5	727	798	9.8	294	340	15.6
Unknown citizenship	2	5	150.0	0	0	-	2	5	150.0

Table 13. Pupils of Second Chance Schools of the second grade that graduated, by gender and NUTS 2 Region

NUTS 2 Region	Total			Males			Females		
	2019/20	2020/21	Change %	2019/20	2020/21	Change %	2019/20	2020/21	Change %
TOTAL	2,610	2,487	-4.7	1,411	1,328	-5.9	1,199	1,159	-3.3
Anatoliki Makedonia, Thraki	255	176	-31.0	117	85	-27.4	138	91	-34.1
Kentriki Makedonia	506	536	5.9	272	286	5.1	234	250	6.8
Dytiki Makedonia	93	75	-19.4	58	40	-31.0	35	35	0.0
Ipeiros	117	108	-7.7	69	46	-33.3	48	62	29.2
Thessalia	156	178	14.1	97	99	2.1	59	79	33.9
Stereia Ellada	235	247	5.1	144	172	19.4	91	75	-17.6
Ionia Nisia	33	37	12.1	23	21	-8.7	10	16	60.0
Dytiki Ellada	260	216	-16.9	131	116	-11.5	129	100	-22.5
Peloponnisos	102	101	-1.0	50	60	20.0	52	41	-21.2
Attiki	399	365	-8.5	184	172	-6.5	215	193	-10.2
Voreio Aigaio	175	146	-16.6	108	66	-38.9	67	80	19.4
Notio Aigaio	81	79	-2.5	39	30	-23.1	42	49	16.7
Kriti	198	223	12.6	119	135	13.4	79	88	11.4

SECONDARY VOCATIONAL EDUCATION

The results from the survey on Secondary Vocational Education, pertaining to Vocational Upper Secondary Schools (EPAL) and Vocational Schools (EPAS), can be summarized as follows:

- The **school units** in the school year 2020/2021 compared with the corresponding number in the school year 2019/2020, increased from 459 to 467 (Table 15),
- **Teaching staff** in the school year 2020/2021 compared with the corresponding number in the school year 2019/2020, increased from 13,574 to 13,991 (Table 15),
- **The number of pupils enrolled** in the school year 2020/2021, compared with the corresponding number in the school year 2019/2020, increased from 109,625 to 116,571 (Table 16),
- **The number of graduates** in the school year 2020/2021 compared with the corresponding number in the school year 2019/2020, increased from 28,669 to 35,270 (Table 16),
- **The ratio of teaching staff to pupils**, in the school year 2020/2021, was 1 teacher for 8.3 pupils, while the corresponding ratio in the school year 2019/2020 was 1 teacher for 8.1 pupils (Tables 15 and 16),
- The **Region of Attiki** in the school year 2020/2021 accounted for 26.5% of the total pupil population of all the EPAL and EPAS in Greece (Graph 7).

More specifically, Table 14 and Graph 4 depict the evolution of pupil population in Secondary Vocational Education during the period 2011/2012 to 2020/2021.

Table 14
Evolution of pupil population in Secondary Vocational Education
2011/12 – 2020/21

School Year	Pupils Enrolled
2011/2012	121,008
2012/2013	123,989
2013/2014	109,917
2014/2015	101,761
2015/2016	98,772
2016/2017	98,568
2017/2018	97,452
2018/2019	103,440
2019/2020	109,625
2020/2021	116,571

Graph 4
Evolution of pupil population in Secondary Vocational Education
2011/12 – 2020/21

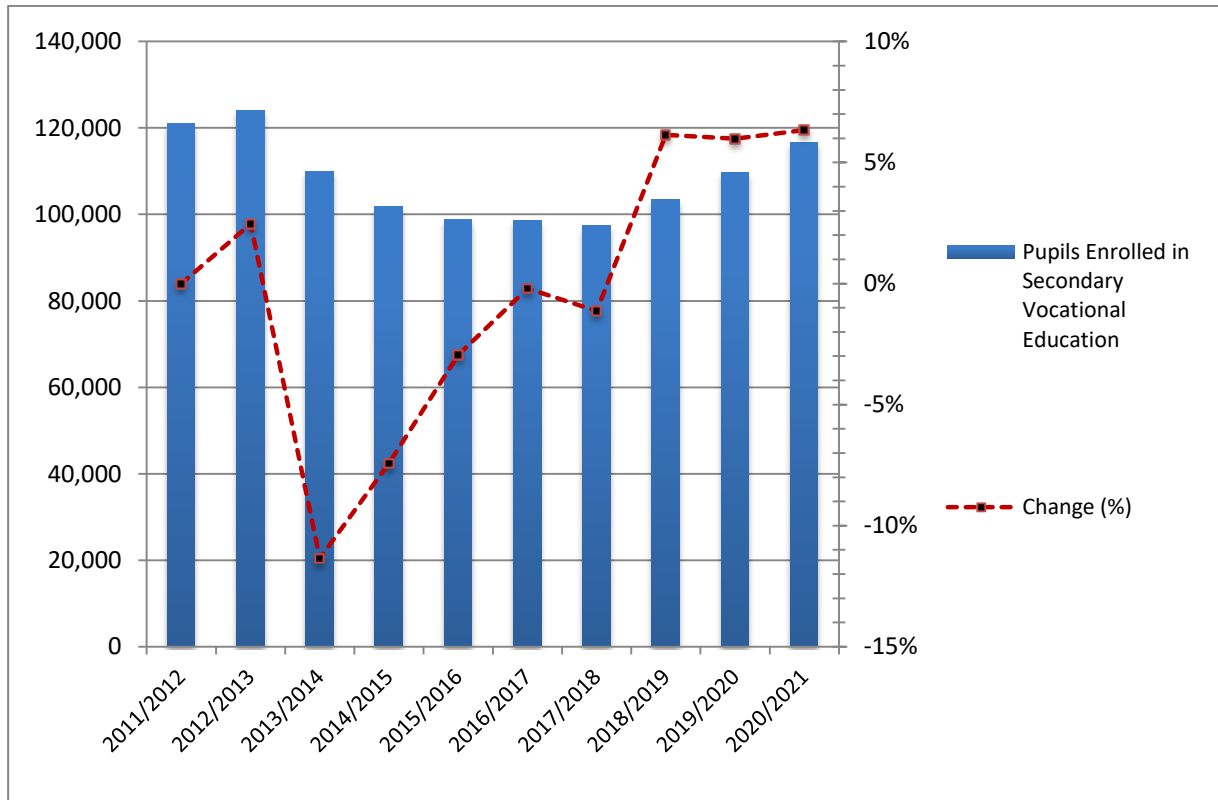


Table 15 presents data on the number of the school units and teaching staff for school years 2019/2020 and 2020/2021.

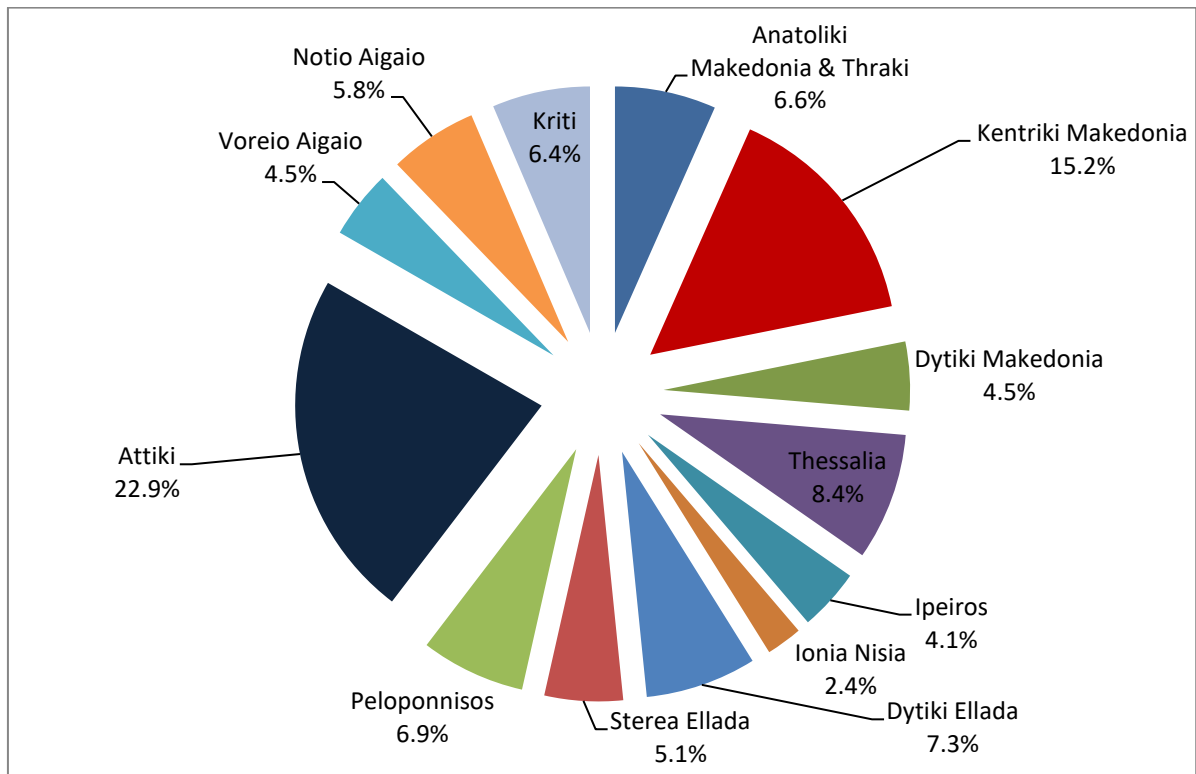
Table 15. Number of school units and teaching staff⁶

<i>By Type of school unit</i>						
School units	Number of school units			Teaching staff		
	2019/20	2020/21	Change (%)	2019/20	2020/21	Change (%)
EPAL of the Ministry of Education and Religious Affairs	403	411	2.0	12,074	12,528	3.8
EPAS of the Ministry of Labour and Social Affairs	50	50	0.0	1,437	1,400	-2.6
EPAS of the Ministry of Rural Development and Food	6	6	0.0	63	63	0.0
TOTAL	459	467	1.7	13,574	13,991	3.1
<i>By Region</i>						
Region (NUTS 2)	Number of school units			Teaching staff		
	2019/20	2020/21	Change (%)	2019/20	2020/21	Change (%)
Anatoliki Makedonia, Thraki	30	31	3.3	889	926	4.2
Kentriki Makedonia	71	71	0.0	2,550	2,616	2.6
Dytiki Makedonia	19	21	10.5	589	616	4.6
Thessalia	37	39	5.4	1,121	1,187	5.9
Ipeiros	19	19	0.0	502	535	6.6
Ionia Nisia	11	11	0.0	255	265	3.9
Dytiki Ellada	34	34	0.0	840	881	4.9
Stereia Ellada	24	24	0.0	617	629	1.9
Peloponnisos	31	32	3.2	649	673	3.7
Attiki	107	107	0.0	3,347	3,379	1.0
Voreio Aigaio	20	21	5.0	481	510	6.0
Notio Aigaio	26	27	3.8	672	678	0.9
Kriti	30	30	0.0	1,062	1,096	3.2
TOTAL	459	467	1.7	13,574	13,991	3.1

⁶ Absent teachers are also included,

Absent teachers are the teachers with a fixed post in the school unit, who are absent for more than 20 days (due to illness, training, maternity leave, etc) and their replacement is pending, as well as the teachers who are seconded to other administrative posts of the Ministry of Education and Religious Affairs or elsewhere,

Graph 5. Percentage distribution of school units by NUTS 2 region, school year 2020/21



Graph 6. Teaching staff by NUTS 2 region, school year 2020/21

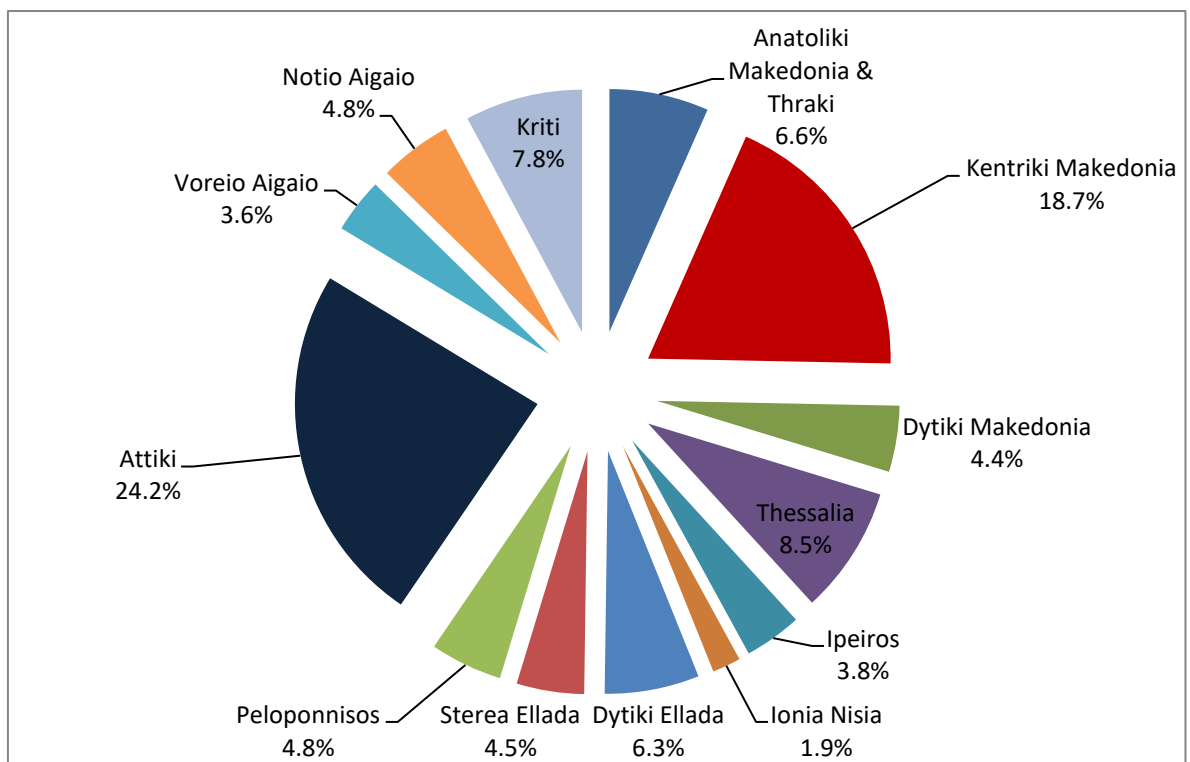


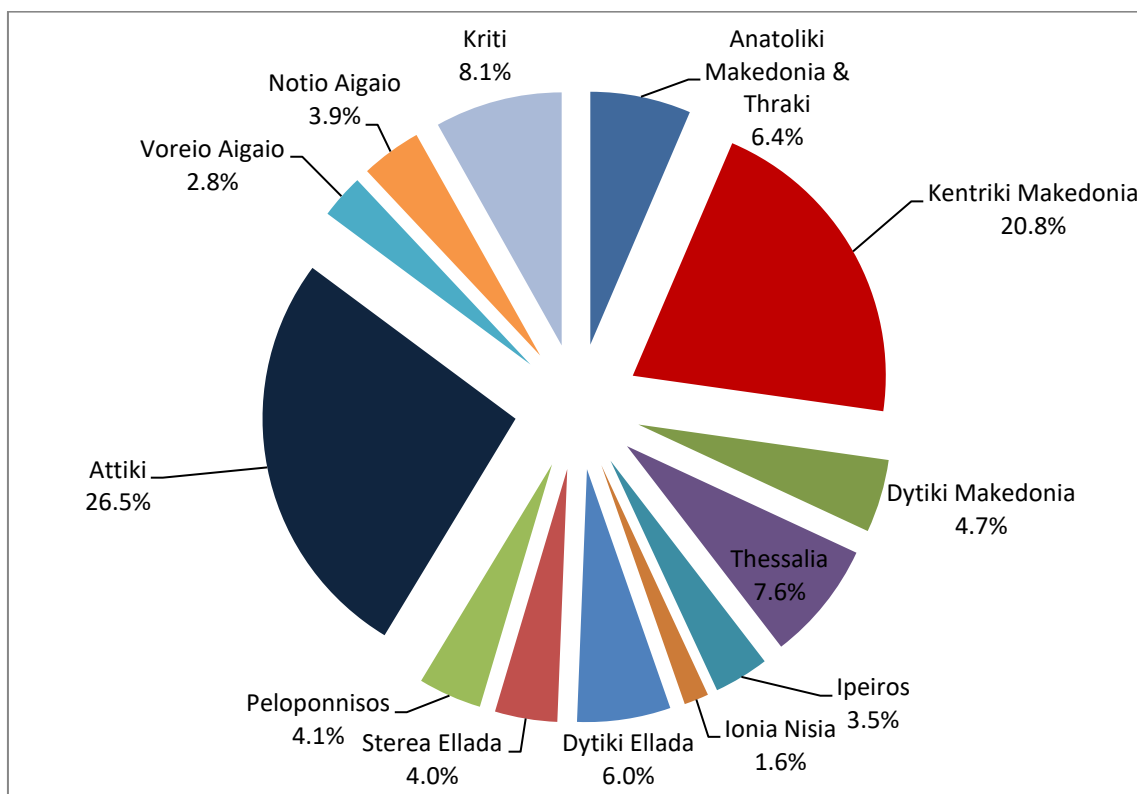
Table 16 presents data on the number of enrolled pupils and graduates for school years 2019/2020 and 2020/2021.

Table 16. Pupils enrolled and graduates by type of school unit and region

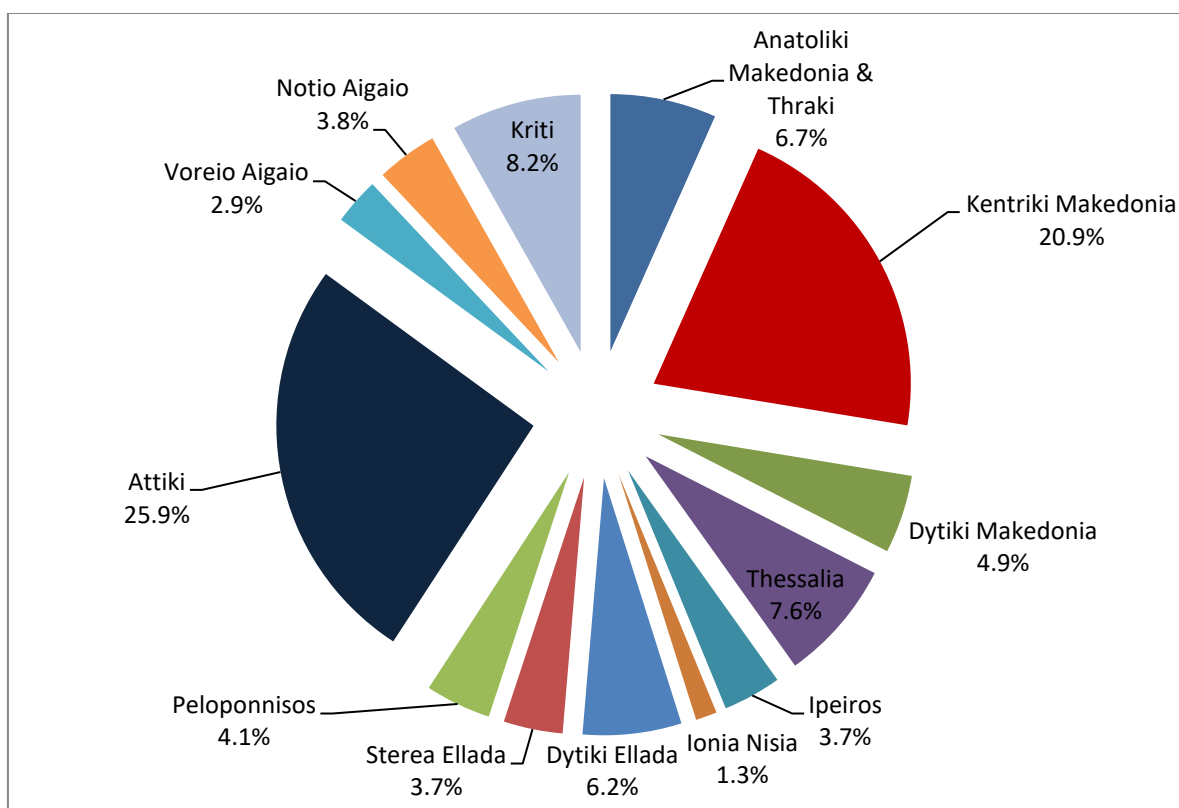
<i>By Type of School Unit</i>						
School units	Pupils enrolled			Graduates*		
	2019/20	2020/21	Change (%)	2019/20	2020/21	Change (%)
EPAL of the Ministry of Education and Religious Affairs	101,601	108,408	6.7	25,460	32,175	26.4
EPAS of the Ministry of Labour and Social Affairs	7,804	7,951	1.9	3,069	2,935	-4.4
EPAS of the Ministry of Rural Development and Food	220	212	-3.6	140	160	14.3
TOTAL	109,625	116,571	6.3	28,669	35,270	23.0
<i>By Region</i>						
Region (NUTS 2)	Pupils enrolled			Graduates		
	2019/20	2020/21	Change (%)	2019/20	2020/21	Change (%)
Anatoliki Makedonia, Thraki	6,945	7,505	8.1	1,833	2,353	28.4
Kentriki Makedonia	22,789	24,254	6.4	6,090	7,379	21.2
Dytiki Makedonia	5,021	5,449	8.5	1,389	1,735	24.9
Thessalia	8,183	8,916	9.0	2,246	2,689	19.7
Ipeiros	3,711	4,096	10.4	895	1,290	44.1
Ionia Nisia	1,643	1,834	11.6	404	472	16.8
Dytiki Ellada	6,630	6,963	5.0	1,880	2,188	16.4
Stereia Ellada	4,300	4,643	8.0	1,153	1,312	13.8
Peloponnisos	4,417	4,724	7.0	1,250	1,455	16.4
Attiki	29,932	30,896	3.2	7,390	9,122	23.4
Voreio Aigaio	3,117	3,300	5.9	790	1,038	31.4
Notio Aigaio	4,129	4,505	9.1	1,141	1,353	18.6
Kriti	8,808	9,486	7.7	2,208	2,884	30.6
TOTAL	109,625	116,571	6.3	28,669	35,270	23.0

* According to Law 4763/2020, study at Afternoon Vocational Upper Secondary Schools was reduced from four to three years.

Graph 7. Pupils enrolled by NUTS 2 region, school year 2020/21



Graph 8. Graduates by NUTS 2 region, school year 2020/21



EXPLANATORY NOTES

Surveys on General and Vocational Secondary Education The surveys in General and Vocational Secondary Education are conducted, on a yearly basis, aiming at collecting data on the number of pupils enrolled, the school units and the number of teaching staff. These surveys are carried out on an annual basis in all Member States of the European Union, with common standards and methods.

General Secondary Education includes lower and upper secondary schools of general education, ecclesiastical secondary schools and second chance schools.

Vocational Secondary Education includes:

- the Vocational Upper Secondary Schools (EPAL)
- the Vocational Schools (EPAS)

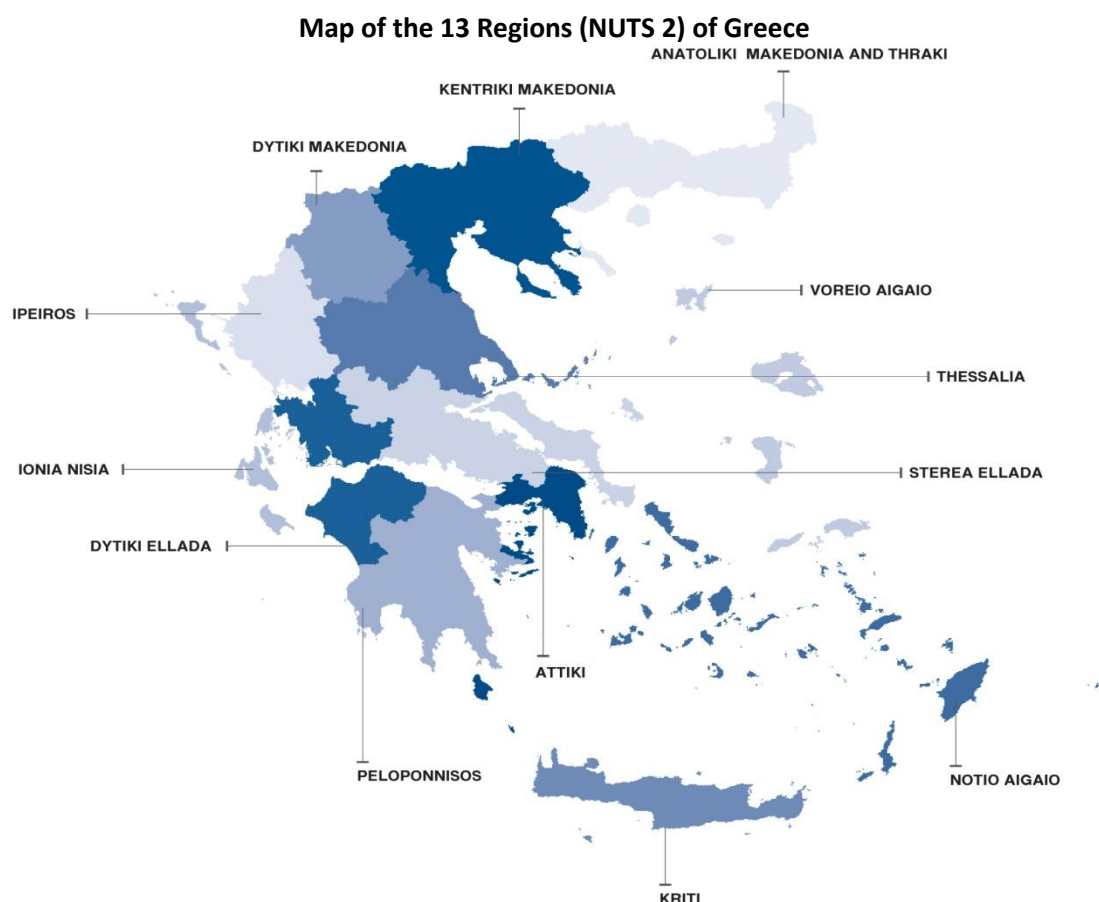
EPAL and EPAS are under the competency of the Ministry of Education and Religious Affairs, the Ministry of Rural Development and Food and the Ministry of Labour and Social Affairs. Since the school year 2014/2015, public EPAS of the Ministry of Education and Religious Affairs were abolished, while private EPAS under the supervision of the Ministry of Education and Religious Affairs are still under operation.

Legal Frame The surveys are conducted by virtue of Regulation 452/2008 of the European Parliament and the Council and implementing Regulation 912/2013 of the European Commission.

Statistical Units The statistical units are the school units.

Coverage Greece total.

Geographical Classification The geographical classification is based on Nomenclature of Territorial Units for Statistics.



Dissemination of results	The data are posted on a yearly basis on the website of ELSTAT.
Reference period	The data of the surveys refer to the end of school year 2020/2021.
Methodology and coverage	<p>The Secondary Education surveys include the school units of the whole country and are carried out on an annual basis. Until the school year 2013/2014, the surveys on General Secondary Education used to be census, yearly surveys and they were conducted by ELSTAT. For the school year 2014/2015 onwards the data of these surveys are collected as follows:</p> <ul style="list-style-type: none"> – As regards public school units, the data were extracted from the “live” e-platform “MySchool” of the Ministry of Education and Religious Affairs. – As regards private school units and public school units which are not under the competency of the Ministry of Education and Religious Affairs, the data were collected via an annual census survey with the use of questionnaires. <p>For Second Chance Schools’ survey, questionnaires were sent to the schools.</p>
References	<p>More information, such as tables with the survey results, samples of questionnaires, etc, on the Survey on General Secondary Education can be found on the webpage of ELSTAT www.statistics.gr at the link: “Statistics” / Population and Social Conditions / Education / Lower Secondary Education Schools (Beginning – End of school year) or Upper Secondary Education Schools (Beginning – End of school year)” and at the link “Statistics”/ Population and Social Conditions / Education /Secondary Vocational Education”.</p>