



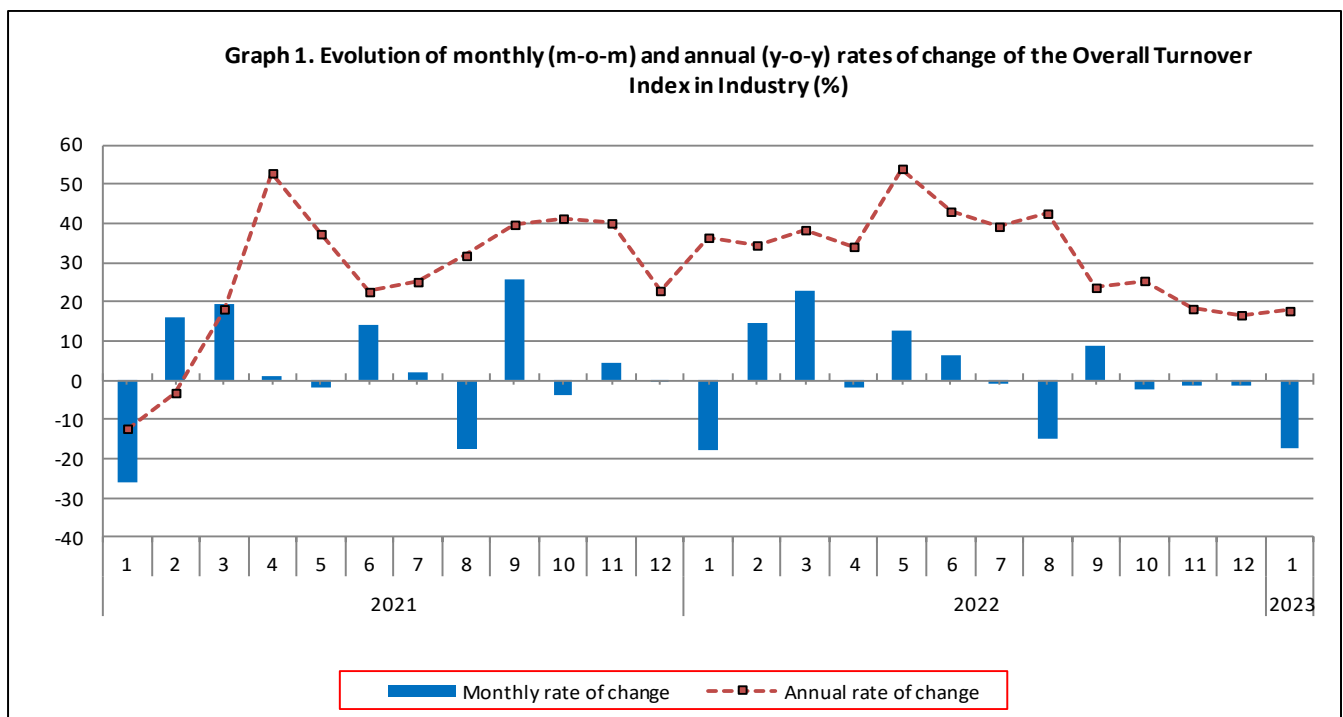
## TURNOVER INDEX IN INDUSTRY: January 2023, y-o-y increase of 17.7%

The Hellenic Statistical Authority announces the Turnover Index in Industry with base year 2015=100.0 for January 2023, the evolution of which on the basis of provisional data, is as follows:

The Overall Turnover Index in Industry (both Domestic and Non-Domestic Market) in January 2023 recorded an increase of 17.7% compared with the corresponding index of January 2022. The Overall Turnover Index in Industry in January 2022 increased by 36.4% compared with the corresponding index in January 2021 (Table 1).

The Overall Turnover Index in Industry in January 2023, compared with December 2022, recorded a decrease of 17.2% (Table 6).

The average Overall Turnover Index in Industry for the 12-month period from February 2022 to January 2023 increased by 31.7%, compared with the corresponding index of the 12-month period from February 2021 to January 2022. The average Overall Turnover Index in Industry for the 12-month period from February 2021 to January 2022 increased by 29.5% compared with the corresponding index of the 12-month period from February 2020 to January 2021 (Table 13).



### Information on methodological issues:

Division of Business Statistics  
Section of Manufacture-Construction Indices and Industrial Products  
Head of the Section : Diamantaki Aikaterini  
Tel: +30 213 135 2056  
E-mail: [a.diamantaki@statistics.gr](mailto:a.diamantaki@statistics.gr)

### Information on data provision:

Tel: +30 213 135 2022, 2308, 2310  
E-mail: [data.dissem@statistics.gr](mailto:data.dissem@statistics.gr)

## Evolution of the Overall Turnover Index in Industry in January 2023

### I. Annual changes of the Overall Turnover Index in Industry: January 2023/January 2022

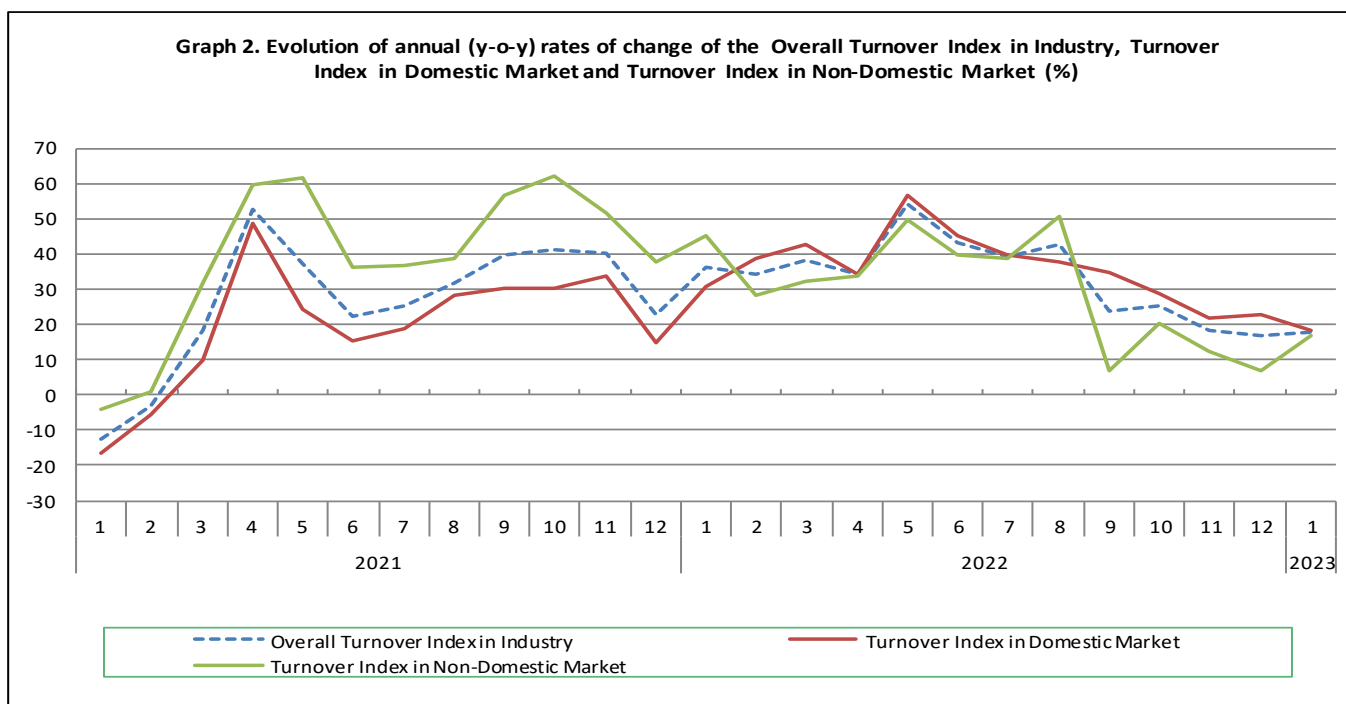
The 17.7% increase in the Overall Turnover Index in Industry in January 2023, compared with the corresponding index in January 2022, was due to the following:

#### 1. Changes in the sub-indices of the industrial sections (Table 1):

- The Turnover Index in Manufacturing increased by 17.8%. The increase was mainly the result of the annual changes of the sub-indices in the following 2-digit divisions: tobacco products, basic pharmaceutical products and pharmaceutical preparations, food, coke and refined petroleum products.
- The Turnover Index in Mining and quarrying increased by 5.8%. The increase was mainly the result of the annual change of the sub-index in the following 2-digit divisions: mining of coal and lignite - extraction of crude petroleum and natural gas - mining support service activities.

#### 2. Changes in the sub-indices in Domestic and Non-Domestic Markets:

- The Turnover Index in Industry in Domestic Market increased by 18.2% (Table 2).
- The Turnover Index in Industry in Non-Domestic Market increased by 17.0% (Table 3).



### II. Annual changes of the Turnover Index in Industry in Domestic Market: January 2023/January 2022

The 18.2% increase of the Turnover Index in Industry in Domestic Market in January 2023, compared with January 2022, is due to the annual changes in the sub-indices of the following industrial sections (Table 2):

- The Turnover Index in Mining and quarrying increased by 49.6%. The increase was the result of the annual changes of the sub-indices in the following 2-digit divisions: mining of coal and lignite - extraction of crude petroleum and natural gas - mining support service activities, other mining and quarrying products.
- The Turnover Index in Manufacturing increased by 18.0%. The increase was mainly the result of the annual changes of the sub-indices in the following 2-digit divisions: other non-metallic mineral products, basic pharmaceutical products and pharmaceutical preparations, beverages, food.

### III. Annual changes of the Turnover Index in Industry in Non-Domestic Market: January 2023/January 2022

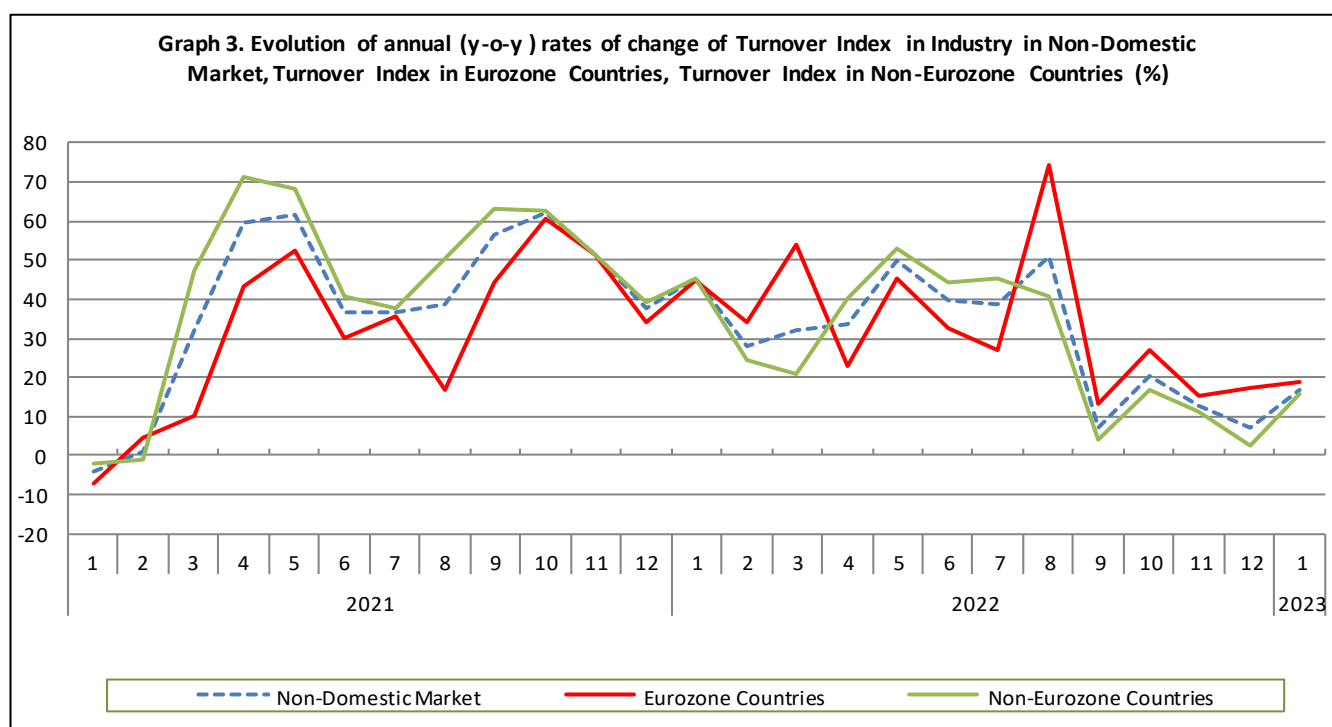
The 17.0% increase of the Turnover Index in Industry in Non-Domestic Market in January 2023, compared with January 2022, was due to the following:

#### 1. Changes in the sub-indices of the industrial sections (Table 3):

- The Turnover Index in Manufacturing increased by 17.5%. The increase was mainly the result of the annual changes of the sub-indices in the following 2-digit divisions: tobacco products, computers, electronic and optical products, coke and refined petroleum products, food.
- The Turnover Index in Mining and quarrying decreased by 20.7%. The decrease was the result of the annual change of the sub-index in the following 2-digit division: other mining and quarrying products.

#### 2. Changes in the sub-indices in Eurozone and Non-Eurozone countries:

- The Turnover Index in Industry in Eurozone countries increased by 18.8% (Table 4).
- The Turnover Index in Industry in Non-Eurozone countries increased by 15.9% (Table 5).



### IV. Monthly changes of the Overall Turnover Index in Industry: January 2023/December 2022

The 17.2% decrease of the Overall Turnover Index in Industry in January 2023, compared with the corresponding index in December 2022, was due to the following:

#### 1. Changes in the sub-indices of industrial sections (Table 6):

- The Turnover Index in Mining and quarrying decreased by 35.6%.
- The Turnover Index in Manufacturing decreased by 17.1%.

#### 2. Changes in the sub-indices in Domestic and Non-Domestic Market:

- The Turnover Index in Industry in Domestic Market decreased by 23.7% (Table 7).
- The Turnover Index in Industry in Non-Domestic Market decreased by 5.7% (Table 8).

**Table 1. Annual rates of change of the Turnover Index in Industry: Total Market**

Base year: 2015=100.0

Code	Division	Weights	January			Rate of change (%)	
			2023*	2022*	2021	2023/2022	2022/2021
<b>OVERALL INDEX</b>			<b>139.84</b>	<b>118.82</b>	<b>87.10</b>	<b>17.7</b>	<b>36.4</b>
<b>B</b>	<b>MINING AND QUARRYING</b>	<b>100.00</b>	<b>78.28</b>	<b>74.02</b>	<b>84.69</b>	<b>5.8</b>	<b>-12.6</b>
<b>05-06-09</b>	Mining of coal and lignite - Extraction of crude petroleum and natural gas - Mining support service activities	21.19	23.76	6.13	12.12	287.5	-49.4
<b>07</b>	Mining of metal ores	17.56	98.42	94.07	196.21	4.6	-52.1
<b>08</b>	Other mining and quarrying products	61.25	91.36	91.76	77.82	-0.4	17.9
<b>C</b>	<b>MANUFACTURING</b>	<b>100.00</b>	<b>140.67</b>	<b>119.42</b>	<b>87.13</b>	<b>17.8</b>	<b>37.1</b>
<b>10</b>	Food	23.39	134.89	112.26	96.72	20.2	16.1
<b>11</b>	Beverages	3.57	90.59	71.21	63.31	27.2	12.5
<b>12</b>	Tobacco products	1.19	189.46	130.38	141.67	45.3	-8.0
<b>13</b>	Textiles	1.28	108.91	97.85	92.77	11.3	5.5
<b>14</b>	Wearing apparel	1.80	91.46	72.96	62.54	25.4	16.7
<b>15</b>	Leather and related products	0.34	50.13	41.20	27.66	21.7	48.9
<b>16</b>	Wood and products of wood and cork, except furniture	0.72	112.54	95.13	76.04	18.3	25.1
<b>17</b>	Paper and paper products	2.44	148.83	114.70	104.59	29.8	9.7
<b>18</b>	Printing and reproduction of recorded products	1.17	102.36	83.26	75.63	22.9	10.1
<b>19</b>	Coke and refined petroleum products	28.73	148.22	125.09	60.83	18.5	105.6
<b>20</b>	Chemicals and chemical products	4.43	125.56	139.02	104.15	-9.7	33.5
<b>21</b>	Basic pharmaceutical products and pharmaceutical preparations	3.67	238.52	178.63	141.73	33.5	26.0
<b>22</b>	Rubber and plastic products	3.47	122.55	113.76	96.98	7.7	17.3
<b>23</b>	Other non-metallic mineral products	3.31	122.99	93.26	79.91	31.9	16.7
<b>24</b>	Basic metals	7.19	190.47	184.09	132.84	3.5	38.6
<b>25</b>	Fabricated metal products, except machinery and equipment	4.51	103.13	93.19	79.60	10.7	17.1
<b>26</b>	Computers, electronic and optical products	0.78	204.77	133.13	146.56	53.8	-9.2
<b>27</b>	Electrical equipment	2.65	176.20	149.63	112.84	17.8	32.6
<b>28</b>	Machinery and equipment n.e.c.	1.56	94.41	76.36	76.83	23.6	-0.6
<b>29</b>	Motor vehicles, trailers and semi-trailers	0.23	108.06	72.07	50.17	49.9	43.7
<b>30</b>	Other transport equipment	0.52	50.71	40.70	46.80	24.6	-13.0
<b>31</b>	Furniture	0.97	95.12	72.87	63.20	30.5	15.3
<b>32</b>	Other manufacturing	0.66	114.01	85.49	75.68	33.4	13.0
<b>33</b>	Repair and installation of machinery and equipment	1.42	90.89	66.12	65.19	37.5	1.4
<b>MAIN INDUSTRIAL GROUPINGS</b>							
<b>1</b>	Energy	28.57	147.30	124.18	60.48	18.6	105.3
<b>2</b>	Intermediate goods	28.29	144.25	134.66	105.53	7.1	27.6
<b>3</b>	Capital goods	7.00	105.83	81.20	77.65	30.3	4.6
<b>4</b>	Consumer Durables	1.86	105.83	79.97	67.56	32.3	18.4
<b>5</b>	Consumer Non-Durables	34.28	138.77	111.06	97.07	24.9	14.4

\* Provisional data

Note: The indices and the percentage changes are rounded up to two and one decimal digits, respectively, when published.

**Table 2. Annual rates of change of the Turnover Index in Industry: Domestic Market**

Base year: 2015=100.0

Code	Division	Weights	January			Rate of change (%)	
			2023*	2022*	2021	2023/2022	2022/2021
<b>OVERALL INDEX</b>			<b>124.92</b>	<b>105.70</b>	<b>80.74</b>	<b>18.2</b>	<b>30.9</b>
<b>B</b>	<b>MINING AND QUARRYING</b>	<b>100.00</b>	<b>73.55</b>	<b>49.16</b>	<b>55.30</b>	<b>49.6</b>	<b>-11.1</b>
05-06-09	Mining of coal and lignite - Extraction of crude petroleum and natural gas - Mining support service activities	31.66	26.57	7.25	14.32	266.5	-49.4
07	Mining of metal ores	12.83	48.85	75.67	88.55	-35.4	-14.5
08	Other mining and quarrying products	55.50	106.05	66.93	70.98	58.5	-5.7
<b>C</b>	<b>MANUFACTURING</b>	<b>100.00</b>	<b>125.51</b>	<b>106.35</b>	<b>81.03</b>	<b>18.0</b>	<b>31.3</b>
10	Food	28.50	124.02	100.96	93.42	22.8	8.1
11	Beverages	4.86	88.56	68.35	61.05	29.6	12.0
12	Tobacco products	0.51	229.37	212.59	181.57	7.9	17.1
13	Textiles	1.11	85.57	78.07	64.29	9.6	21.4
14	Wearing apparel	1.77	89.81	65.35	54.43	37.4	20.1
15	Leather and related products	0.41	45.80	42.02	25.17	9.0	67.0
16	Wood and products of wood and cork, except furniture	0.96	108.72	91.06	71.09	19.4	28.1
17	Paper and paper products	3.12	145.33	112.30	101.50	29.4	10.6
18	Printing and reproduction of recorded products	1.63	86.08	67.22	61.09	28.1	10.0
19	Coke and refined petroleum products	24.90	118.48	110.85	47.08	6.9	135.4
20	Chemicals and chemical products	4.90	114.87	132.91	106.07	-13.6	25.3
21	Basic pharmaceutical products and pharmaceutical preparations	3.85	217.95	150.40	135.70	44.9	10.8
22	Rubber and plastic products	3.31	117.32	109.39	91.63	7.2	19.4
23	Other non-metallic mineral products	3.31	132.31	90.56	81.68	46.1	10.9
24	Basic metals	3.49	230.19	198.57	148.59	15.9	33.6
25	Fabricated metal products, except machinery and equipment	4.25	111.88	97.05	87.31	15.3	11.1
26	Computers, electronic and optical products	0.40	105.22	62.63	89.81	68.0	-30.3
27	Electrical equipment	2.24	178.54	141.45	111.40	26.2	27.0
28	Machinery and equipment n.e.c.	1.46	104.51	82.82	80.96	26.2	2.3
29	Motor vehicles, trailers and semi-trailers	0.27	112.08	69.74	40.49	60.7	72.3
30	Other transport equipment	0.58	44.40	27.83	39.70	59.6	-29.9
31	Furniture	1.35	86.16	67.27	57.47	28.1	17.1
32	Other manufacturing	0.88	110.21	81.10	71.28	35.9	13.8
33	Repair and installation of machinery and equipment	1.92	90.85	67.91	68.27	33.8	-0.5
<b>MAIN INDUSTRIAL GROUPINGS</b>							
1	Energy	24.89	117.59	109.77	46.78	7.1	134.6
2	Intermediate goods	25.73	140.40	121.50	101.19	15.6	20.1
3	Capital goods	7.19	103.88	79.51	76.71	30.7	3.7
4	Consumer Durables	2.31	95.63	75.14	60.60	27.3	24.0
5	Consumer Non-Durables	39.88	125.00	99.47	90.63	25.7	9.8

\* Provisional data

Note: The indices and the percentage changes are rounded up to two and one decimal digits, respectively, when published.

**Table 3. Annual rates of change of the Turnover Index in Industry: Non-Domestic Market**

Base year: 2015=100.0

Code	Division	Weights	January			Rate of change (%)	
			2023*	2022*	2021	2023/2022	2022/2021
<b>OVERALL INDEX</b>			<b>169.23</b>	<b>144.65</b>	<b>99.64</b>	<b>17.0</b>	<b>45.2</b>
<b>B</b>	<b>MINING AND QUARRYING</b>	<b>100.00</b>	<b>84.45</b>	<b>106.46</b>	<b>123.04</b>	<b>-20.7</b>	<b>-13.5</b>
05-06-09	Mining of coal and lignite - Extraction of crude petroleum and natural gas - Mining support service activities	7.53	8.34	0.00	0.00	-	-
07	Mining of metal ores	23.74	133.41	107.05	272.18	24.6	-60.7
08	Other mining and quarrying products	68.74	75.88	117.91	85.02	-35.6	38.7
<b>C MANUFACTURING</b>		<b>100.00</b>	<b>170.71</b>	<b>145.32</b>	<b>99.23</b>	<b>17.5</b>	<b>46.5</b>
10	Food	13.27	181.12	160.35	110.76	13.0	44.8
11	Beverages	1.01	110.05	98.46	84.79	11.8	16.1
12	Tobacco products	2.53	173.37	97.23	125.58	78.3	-22.6
13	Textiles	1.61	140.93	124.99	131.86	12.8	-5.2
14	Wearing apparel	1.86	94.56	87.29	77.81	8.3	12.2
15	Leather and related products	0.19	68.71	37.65	38.36	82.5	-1.9
16	Wood and products of wood and cork, except furniture	0.24	142.80	127.43	115.31	12.1	10.5
17	Paper and paper products	1.11	168.27	128.04	121.79	31.4	5.1
18	Printing and reproduction of recorded products	0.26	305.07	283.00	256.71	7.8	10.2
19	Coke and refined petroleum products	36.32	188.62	144.42	79.50	30.6	81.7
20	Chemicals and chemical products	3.50	155.16	155.91	98.84	-0.5	57.7
21	Basic pharmaceutical products and pharmaceutical preparations	3.30	286.05	243.84	155.65	17.3	56.7
22	Rubber and plastic products	3.79	131.61	121.33	106.27	8.5	14.2
23	Other non-metallic mineral products	3.31	104.52	98.61	76.41	6.0	29.1
24	Basic metals	14.54	171.58	177.20	125.35	-3.2	41.4
25	Fabricated metal products, except machinery and equipment	5.03	88.46	86.72	66.68	2.0	30.0
26	Computers, electronic and optical products	1.52	256.58	169.81	176.09	51.1	-3.6
27	Electrical equipment	3.44	173.18	160.20	114.71	8.1	39.7
28	Machinery and equipment n.e.c.	1.76	77.82	65.74	70.05	18.4	-6.2
29	Motor vehicles, trailers and semi-trailers	0.14	92.38	81.16	87.88	13.8	-7.6
30	Other transport equipment	0.40	68.66	77.39	67.03	-11.3	15.5
31	Furniture	0.21	209.13	144.14	136.27	45.1	5.8
32	Other manufacturing	0.22	143.48	119.47	109.78	20.1	8.8
33	Repair and installation of machinery and equipment	0.43	91.20	50.39	38.11	81.0	32.2
<b>MAIN INDUSTRIAL GROUPINGS</b>							
1	Energy	35.82	187.97	143.90	79.22	30.6	81.7
2	Intermediate goods	33.33	150.11	154.68	112.14	-3.0	37.9
3	Capital goods	6.62	109.98	84.82	79.65	29.7	6.5
4	Consumer Durables	0.98	153.34	102.48	99.95	49.6	2.5
5	Consumer Non-Durables	23.25	185.31	150.25	118.86	23.3	26.4

\* Provisional data

Note: The indices and the percentage changes are rounded up to two and one decimal digits, respectively, when published.

**Table 4. Annual rates of change of the Turnover Index in Industry: Eurozone Countries**

Base year: 2015=100.0

Code	Sections and main groupings	January			Rate of change (%)	
		2023*	2022*	2021	2023/2022	2022/2021
<b>OVERALL INDEX</b>		<b>186.28</b>	<b>156.85</b>	<b>108.49</b>	<b>18.8</b>	<b>44.6</b>
<b>INDUSTRIAL SECTIONS</b>						
<b>B</b>	MINING AND QUARRYING	40.71	129.02	140.61	-68.4	-8.2
<b>C</b>	MANUFACTURING	189.20	157.41	107.85	20.2	46.0
<b>MAIN INDUSTRIAL GROUPINGS</b>						
<b>1</b>	Energy	168.00	117.97	54.33	42.4	117.1
<b>2</b>	Intermediate goods	181.93	165.34	124.31	10.0	33.0
<b>3</b>	Capital goods	156.92	97.80	108.69	60.4	-10.0
<b>4</b>	Consumer Durables	257.72	185.23	131.48	39.1	40.9
<b>5</b>	Consumer Non-Durables	205.84	181.92	127.37	13.1	42.8

\* Provisional data

**Table 5. Annual rates of change of the Turnover Index in Industry: Non-Eurozone Countries**

Base year: 2015=100.0

Code	Sections and main groupings	January			Rate of change (%)	
		2023*	2022*	2021	2023/2022	2022/2021
<b>OVERALL INDEX</b>		<b>160.16</b>	<b>138.16</b>	<b>94.93</b>	<b>15.9</b>	<b>45.5</b>
<b>INDUSTRIAL SECTIONS</b>						
<b>B</b>	MINING AND QUARRYING	113.16	91.65	111.51	23.5	-17.8
<b>C</b>	MANUFACTURING	160.92	138.92	94.66	15.8	46.8
<b>MAIN INDUSTRIAL GROUPINGS</b>						
<b>1</b>	Energy	193.71	151.37	86.39	28.0	75.2
<b>2</b>	Intermediate goods	129.36	147.72	104.20	-12.4	41.8
<b>3</b>	Capital goods	94.08	80.42	69.81	17.0	15.2
<b>4</b>	Consumer Durables	81.26	45.34	78.18	79.2	-42.0
<b>5</b>	Consumer Non-Durables	165.33	119.42	110.58	38.4	8.0

\* Provisional data

Note: The indices and the percentage changes are rounded up to two and one decimal digits, respectively, when published.

**Table 6. Monthly rate of change of the Turnover Index in Industry: Total Market**

Base year: 2015=100.0

Code	Sections and main groupings	January 2023*	December 2022**	Rate of change (%) Jan. 2023 / Dec. 2022
<b>OVERALL INDEX</b>		<b>139.84</b>	<b>168.99</b>	<b>-17.2</b>
<b>INDUSTRIAL SECTIONS</b>				
<b>B</b>	MINING AND QUARRYING	78.28	121.59	-35.6
<b>C</b>	MANUFACTURING	140.67	169.63	-17.1
<b>MAIN INDUSTRIAL GROUPINGS</b>				
<b>1</b>	Energy	147.30	195.98	-24.8
<b>2</b>	Intermediate goods	144.25	167.84	-14.1
<b>3</b>	Capital goods	105.83	193.93	-45.4
<b>4</b>	Consumer Durables	105.83	188.25	-43.8
<b>5</b>	Consumer Non-Durables	138.77	141.30	-1.8

**Table 7. Monthly rate of change of the Turnover Index in Industry: Domestic Market**

Base year: 2015=100.0

Code	Sections and main groupings	January 2023*	December 2022**	Rate of change (%) Jan. 2023 / Dec. 2022
<b>OVERALL INDEX</b>		<b>124.92</b>	<b>163.63</b>	<b>-23.7</b>
<b>INDUSTRIAL SECTIONS</b>				
<b>B</b>	MINING AND QUARRYING	73.55	97.15	-24.3
<b>C</b>	MANUFACTURING	125.51	164.40	-23.7
<b>MAIN INDUSTRIAL GROUPINGS</b>				
<b>1</b>	Energy	117.59	195.42	-39.8
<b>2</b>	Intermediate goods	140.40	176.02	-20.2
<b>3</b>	Capital goods	103.88	206.83	-49.8
<b>4</b>	Consumer Durables	95.63	142.81	-33.0
<b>5</b>	Consumer Non-Durables	125.00	129.22	-3.3

**Table 8. Monthly rate of change of the Turnover Index in Industry: Non-Domestic Market**

Base year: 2015=100.0

Code	Sections and main groupings	January 2023*	December 2022**	Rate of change (%) Jan. 2023 / Dec. 2022
<b>OVERALL INDEX</b>		<b>169.23</b>	<b>179.55</b>	<b>-5.7</b>
<b>INDUSTRIAL SECTIONS</b>				
<b>B</b>	MINING AND QUARRYING	84.45	153.49	-45.0
<b>C</b>	MANUFACTURING	170.71	180.00	-5.2
<b>MAIN INDUSTRIAL GROUPINGS</b>				
<b>1</b>	Energy	187.97	196.74	-4.5
<b>2</b>	Intermediate goods	150.11	155.40	-3.4
<b>3</b>	Capital goods	109.98	166.36	-33.9
<b>4</b>	Consumer Durables	153.34	399.79	-61.6
<b>5</b>	Consumer Non-Durables	185.31	182.14	1.7

\* Provisional data \*\* Revised data

Note: The indices and the percentage changes are rounded up to two and one decimal digits, respectively, when published.



**Table 9. Monthly rate of change of the Turnover Index in Industry: Eurozone Countries**

Base year: 2015=100.0

Code	Sections and main groupings	January 2023*	December 2022**	Rate of change (%) Jan. 2023 / Dec. 2022
<b>OVERALL INDEX</b>		<b>186.28</b>	<b>169.65</b>	<b>9.8</b>
<b>INDUSTRIAL SECTIONS</b>				
<b>B</b>	MINING AND QUARRYING	40.71	220.66	-81.6
<b>C</b>	MANUFACTURING	189.20	168.63	12.2
<b>MAIN INDUSTRIAL GROUPINGS</b>				
<b>1</b>	Energy	168.00	156.33	7.5
<b>2</b>	Intermediate goods	181.93	169.13	7.6
<b>3</b>	Capital goods	156.92	155.67	0.8
<b>4</b>	Consumer Durables	257.72	442.80	-41.8
<b>5</b>	Consumer Non-Durables	205.84	172.07	19.6

\* Provisional data \*\* Revised data

**Table 10. Monthly rate of change of the Turnover Index in Industry: Non-Eurozone Countries**

Base year: 2015=100.0

Code	Sections and main groupings	January 2023*	December 2022**	Rate of change (%) Jan. 2023 / Dec. 2022
<b>OVERALL INDEX</b>		<b>160.16</b>	<b>184.81</b>	<b>-13.3</b>
<b>INDUSTRIAL SECTIONS</b>				
<b>B</b>	MINING AND QUARRYING	113.16	109.39	3.4
<b>C</b>	MANUFACTURING	160.92	186.03	-13.5
<b>MAIN INDUSTRIAL GROUPINGS</b>				
<b>1</b>	Energy	193.71	208.38	-7.0
<b>2</b>	Intermediate goods	129.36	146.46	-11.7
<b>3</b>	Capital goods	94.08	169.98	-44.7
<b>4</b>	Consumer Durables	81.26	370.09	-78.0
<b>5</b>	Consumer Non-Durables	165.33	191.94	-13.9

\* Provisional data \*\* Revised data

Note: The indices and the percentage changes are rounded up to two and one decimal digits, respectively, when published.

**Table 11. Evolution of the Turnover Index in Industry (y-o-y changes): Total Market**

Base year: 2015=100.0

Year and month	Overall Index (Total Market)		Turnover Index in Industry in Domestic Market		Turnover Index in Industry in Non-Domestic Market	
	Index	Annual rate of change (%)	Index	Annual rate of change (%)	Index	Annual rate of change (%)
<b>2022*:</b> 1	118.82	36.4	105.70	30.9	144.65	45.2
2	136.01	34.4	128.61	38.6	150.60	28.1
3	167.12	38.4	152.66	42.7	195.59	32.2
4	163.54	34.1	149.57	34.4	191.05	33.6
5	184.10	54.0	166.14	56.9	219.47	49.9
6	195.43	43.1	185.41	45.0	215.15	39.9
7	193.51	39.2	179.22	39.5	221.65	38.7
8	164.51	42.6	153.35	37.9	186.50	50.9
9	178.99	23.6	177.24	34.5	182.46	7.0
10	174.31	25.4	162.32	28.7	197.92	20.5
11	171.55	18.2	162.28	22.0	189.80	12.4
12	168.99	16.6	163.63	22.9	179.55	6.8
<b>2023*:</b> 1	139.84	17.7	124.92	18.2	169.23	17.0

\*Provisional data

**Table 12. Evolution of the Turnover Index in Industry (y-o-y changes): Non-Domestic Market**

Base year: 2015=100.0

Year and month	Overall Index (Non-Domestic Market)		Turnover Index in Industry in Eurozone Countries		Turnover Index in Industry in Non-Eurozone Countries	
	Index	Annual rate of change (%)	Index	Annual rate of change (%)	Index	Annual rate of change (%)
<b>2022*:</b> 1	144.65	45.2	156.85	44.6	138.16	45.5
2	150.60	28.1	173.48	34.2	138.44	24.3
3	195.59	32.2	226.45	54.0	179.19	20.8
4	191.05	33.6	191.55	23.0	190.79	40.0
5	219.47	49.9	234.98	45.1	211.23	52.8
6	215.15	39.9	218.83	32.5	213.20	44.2
7	221.65	38.7	208.89	27.0	228.43	45.2
8	186.50	50.9	186.70	74.3	186.39	40.8
9	182.46	7.0	183.86	12.9	181.71	4.1
10	197.92	20.5	216.53	26.8	188.02	16.9
11	189.80	12.4	197.48	15.2	185.72	10.9
12	179.55	6.8	169.65	17.1	184.81	2.4
<b>2023*:</b> 1	169.23	17.0	186.28	18.8	160.16	15.9

\*Provisional data

Note: The indices and the percentage changes are rounded up to two and one decimal digits, respectively, when published.

**Table 13. Average indices and rates of change (%) of the 12-month periods of Turnover Index in Industry: Total Market**  
**Base year: 2015=100.0**

Code	Division	Average Indices of 12-month periods			Rate of change (%)	
		Feb. 2022*- Jan. 2023*	Feb. 2021- Jan. 2022*	Feb. 2020- Jan. 2021	2023/2022	2022/2021
<b>OVERALL INDEX</b>		<b>169.82</b>	<b>128.92</b>	<b>99.53</b>	<b>31.7</b>	<b>29.5</b>
<b>B</b>	<b>MINING AND QUARRYING</b>	<b>107.70</b>	<b>103.29</b>	<b>99.77</b>	<b>4.3</b>	<b>3.5</b>
<b>05-06-09</b>	Mining of coal and lignite - Extraction of crude petroleum and natural gas - Mining support service activities	25.68	27.85	24.49	-7.8	13.7
<b>07</b>	Mining of metal ores	166.14	172.00	193.76	-3.4	-11.2
<b>08</b>	Other mining and quarrying products	119.32	109.69	98.87	8.8	10.9
<b>C</b>	<b>MANUFACTURING</b>	<b>170.67</b>	<b>129.27</b>	<b>99.53</b>	<b>32.0</b>	<b>29.9</b>
<b>10</b>	Food	138.32	114.33	102.77	21.0	11.2
<b>11</b>	Beverages	140.25	116.42	97.00	20.5	20.0
<b>12</b>	Tobacco products	188.50	146.43	133.79	28.7	9.5
<b>13</b>	Textiles	128.96	120.65	96.96	6.9	24.4
<b>14</b>	Wearing apparel	93.45	83.76	62.44	11.6	34.1
<b>15</b>	Leather and related products	80.54	71.44	51.96	12.7	37.5
<b>16</b>	Wood and products of wood and cork, except furniture	142.05	119.14	100.55	19.2	18.5
<b>17</b>	Paper and paper products	155.96	119.79	112.79	30.2	6.2
<b>18</b>	Printing and reproduction of recorded products	118.66	98.36	88.84	20.6	10.7
<b>19</b>	Coke and refined petroleum products	201.73	125.18	74.84	61.1	67.3
<b>20</b>	Chemicals and chemical products	185.95	143.53	120.30	29.6	19.3
<b>21</b>	Basic pharmaceutical products and pharmaceutical preparations	216.93	188.23	166.47	15.2	13.1
<b>22</b>	Rubber and plastic products	153.51	135.09	109.52	13.6	23.3
<b>23</b>	Other non-metallic mineral products	150.49	123.47	102.15	21.9	20.9
<b>24</b>	Basic metals	218.09	167.99	122.03	29.8	37.7
<b>25</b>	Fabricated metal products, except machinery and equipment	137.74	124.58	98.13	10.6	27.0
<b>26</b>	Computers, electronic and optical products	247.35	191.31	159.09	29.3	20.3
<b>27</b>	Electrical equipment	222.10	191.88	136.50	15.7	40.6
<b>28</b>	Machinery and equipment n.e.c.	141.03	124.29	105.58	13.5	17.7
<b>29</b>	Motor vehicles, trailers and semi-trailers	171.85	135.79	109.90	26.5	23.6
<b>30</b>	Other transport equipment	87.03	83.91	66.81	3.7	25.6
<b>31</b>	Furniture	150.21	125.04	103.56	20.1	20.7
<b>32</b>	Other manufacturing	132.09	113.33	87.10	16.5	30.1
<b>33</b>	Repair and installation of machinery and equipment	119.28	103.98	96.92	14.7	7.3
<b>MAIN INDUSTRIAL GROUPINGS</b>						
<b>1</b>	Energy	200.42	124.48	74.49	61.0	67.1
<b>2</b>	Intermediate goods	177.80	143.77	113.63	23.7	26.5
<b>3</b>	Capital goods	140.80	124.47	103.52	13.1	20.2
<b>4</b>	Consumer Durables	152.13	119.97	97.11	26.8	23.5
<b>5</b>	Consumer Non-Durables	144.63	121.76	108.08	18.8	12.7

\*Provisional data

Note: The indices and the percentage changes are rounded up to two and one decimal digits, respectively, when published.

## METHODOLOGICAL NOTES

<b>Generally</b>	The Industrial Turnover Index is an indicator of an enterprise's business cycle showing the monthly evolution of the market of goods and services in industry. The first compilation of the Turnover Index was completed by the Hellenic Statistical Authority in 2006, with base year 2000=100.0 and is compiled from 2000 onwards.
<b>Purpose of the index</b>	The purpose of this index is to measure the monthly activity of the industrial sector in terms of value. Turnover comprises the totals invoiced by the observation units during the reference period and corresponds to the market sales of goods or services supplied to third parties. The purposes and the characteristics of the Turnover Index apply, as well, to the indices for the distinction between domestic and non-domestic turnover.
<b>Legal Framework</b>	The compilation and publication of the Turnover Index is based on the framework of the implementation of Council Regulation (EC) No 1165/1998 concerning short-term statistics (STS-R), as well as Regulation (EC) No 1158/2005 of the European Parliament and of the Council amending Council Regulation (EC) No 1165/1998. Furthermore, this index is governed by Regulation (EC) No 1893/2006 of the European Parliament and of the Council, by Commission Regulation (EC) No 656/2007, by Regulation (EC) No 451/2008 of the Council, by Regulation (EU) No 2019/2152 of the European Parliament and of the Council on European business statistics, as well as Commission Implementing Regulation (EU) No 2020/1197 laying down technical specifications and arrangements pursuant to Regulation (EU) No 2019/2152.
<b>Reference period</b>	Month.
<b>Base year</b>	2015=100.0.
<b>Revision</b>	The latest revision of the Turnover Index in Industry (base year 2015=100.0) took place in the framework of Council Regulation (EC) No 1165/1998 concerning short-term statistics. In accordance with this regulation the index is revised every five years, in years ending in 0 or 5.
<b>Statistical classifications</b>	At the level of classes of economic activities, the statistical classification of economic activities NACE Rev. 2 of EU was used (Regulation No 1893/2006), while at the level of main industrial groupings, the allocation of two-digit and three-digit NACE Rev. 2 headings to categories of aggregate classification was used, in accordance with Commission Regulation No 656/2007.
<b>Geographical coverage</b>	The index covers the whole Country.
<b>Coverage of economic activities</b>	The Turnover Index in Industry is compiled for all activities listed in Sections B (mining and quarrying) and C (manufacturing) of the NACE Rev. 2 statistical classification.
<b>Computation of the Index</b>	The Turnover Index in Industry is a fixed base index. This index is calculated at a first stage at the four-digit level of economic activity and subsequently, with the implementation of appropriate weighting coefficients, the index is calculated at higher levels (three-level and two-level of economic activity) as well as at the level of Main Industrial Groupings (MIGs).
<b>Publication of data</b>	The Turnover Index in Industry (2015=100.0) is released since August 2019 with June 2019 as first reference month. Data with base year 2015=100.0 are available from January 2000 onwards.
<b>References</b>	More information about the methodology concerning the compilation and calculation of the index and for the time series is available on the website of the Hellenic Statistical Authority (ELSTAT) ( <a href="http://www.statistics.gr/en/statistics/-/publication/DKT24/">http://www.statistics.gr/en/statistics/-/publication/DKT24/</a> ).