



**SURVEYS ON PRE-PRIMARY AND PRIMARY EDUCATION
(KINDERGARTENS AND PRIMARY SCHOOLS)
END OF SCHOOL YEAR 2021/2022**

The Hellenic Statistical Authority (ELSTAT) announces data on Pre-Primary and Primary Education Statistics for the school year 2021/2022. On the basis of available survey data the following observations can be made:

- a) In the school year 2021/2022 compared with the school year 2020/2021, **school units** increased by 1.6% in kindergartens and decreased by 0.9% in primary schools (Tables 2 and 4, respectively).
- b) In the school year 2021/2022 compared with the school year 2020/2021, **teaching staff** increased by 7.1% in kindergartens and decreased by 2.8% in primary schools (Tables 2 and 4, respectively).
- c) The **number of pupils** enrolled in the school year 2021/2022 compared with the corresponding number in the school year 2020/2021 recorded a 1.3% increase in kindergartens and a 3.7% decrease in primary schools (Tables 3 and 5, respectively).
- d) The **number of graduates** in primary schools in the school year 2021/2022 compared with 2020/2021 decreased by 4.2% (Table 6).
- e) The **ratio of teaching staff to pupils**, in the school year 2021/2022 was 1 to 9.2 in kindergartens and 1 to 8.0 in primary schools; in the school year 2020/2021 the corresponding ratio was 1 to 9.8 and 1 to 8.1, respectively (Tables 2, 3, 4 and 5).
- f) The **Region of Attiki** accounted for the largest share of pupils enrolled in pre-primary and primary education schools with 35.9% for kindergartens and 35.7% for primary schools (Graphs 2 and 3, respectively).

Information on methodological issues:

Division of Sectoral Statistics
Section of Statistics on Education & Sports
Head of the Section: Dimitra Angelopoulou
Tel: +30 213 135 2134
[e-mail: d.angelopoulou@statistics.gr](mailto:d.angelopoulou@statistics.gr)

Information for data provision:

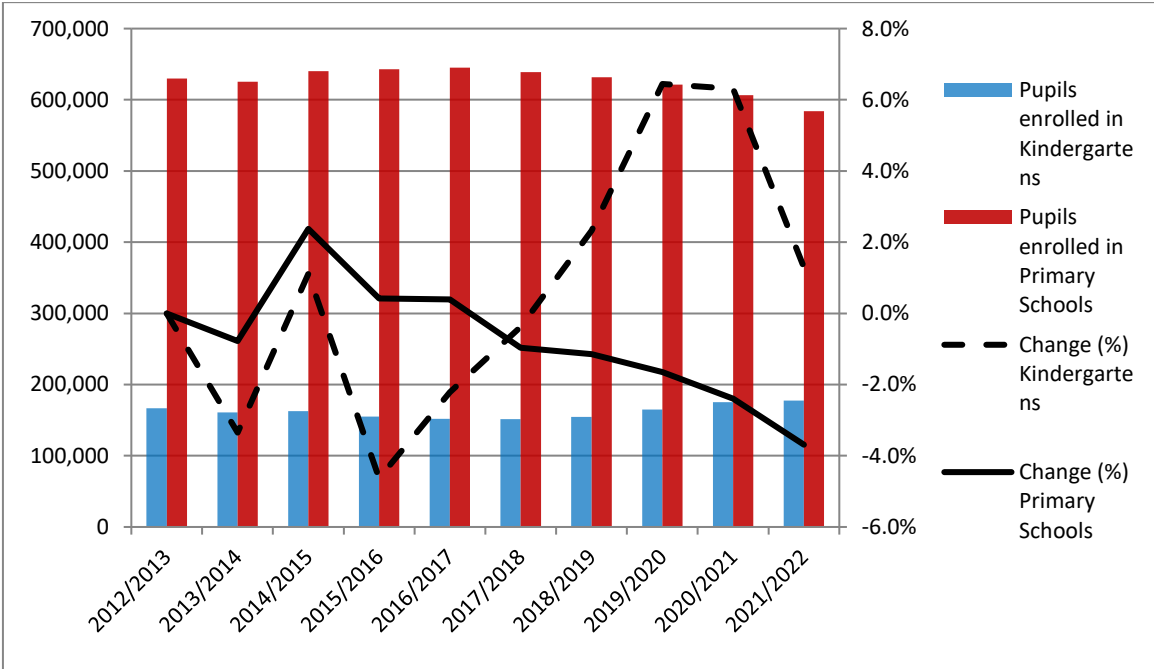
Tel. +30 213 135 2022, 2310
[email: data.dissem@statistics.gr](mailto:data.dissem@statistics.gr)

Table 1 and Graph 1 depict the evolution of the pupil population of kindergartens and primary schools during school years 2012/2013 to 2021/2022.

Table 1
Evolution of pupil population in Pre-Primary and Primary Education 2012/2013 - 2021/2022

School Year	Number of Pupils	
	Kindergartens	Primary Schools
2012/2013	166,576	630,043
2013/2014	160,994	625,165
2014/2015	162,781	640,001
2015/2016	155,243	642,707
2016/2017	151,804	645,250
2017/2018	151,225	639,037
2018/2019	154,744	631,700
2020/2120	164,716	621,298
2020/2021	175,108	606,400
2021/2022	177,372	584,032

Graph 1
Evolution of pupil population in Pre-Primary and Primary Education 2012/2013 - 2021/2022



A. KINDERGARTENS

Tables 2 and 3 present data on the number of kindergartens, teaching staff and pupils enrolled.

Table 2. School Units and Teaching Staff¹ by Type of School Unit and NUTS 2 Region (Kindergartens)

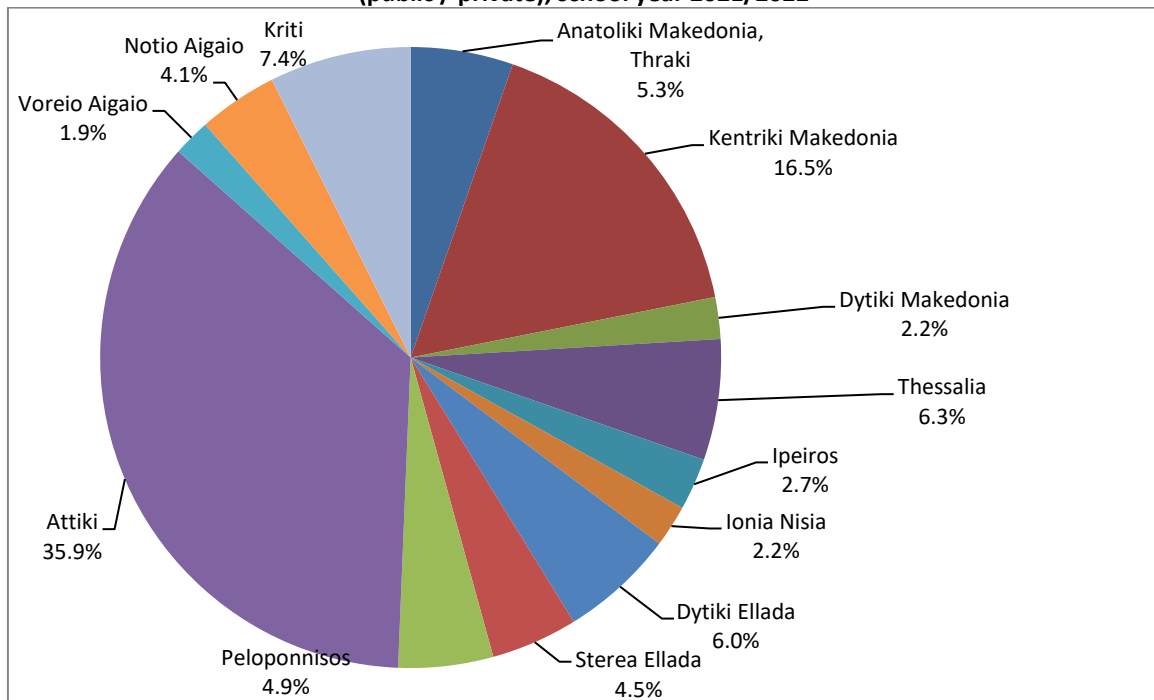
<i>By Type of School Unit</i>						
School Units	Number of School Units			Teaching Staff		
	2020/21	2021/22	Change (%)	2020/21	2021/22	Change (%)
Public	4,904	4,901	-0.1	16,615	17,488	5.3
Private	722	817	13.2	1,323	1,721	30.1
TOTAL	5,626	5,718	1.6	17,938	19,209	7.1
<i>By NUTS 2 Region</i>						
NUTS 2 Region	Number of School Units			Teaching Staff		
	2020/21	2021/22	Change (%)	2020/21	2021/22	Change (%)
Anatoliki Makedonia, Thraki	320	315	-1.6	937	966	3.1
Kentriki Makedonia	987	987	0.0	3,126	3,202	2.4
Dytiki Makedonia	184	178	-3.3	475	491	3.4
Thessalia	436	429	-1.6	1,142	1,165	2.0
Ipeiros	209	204	-2.4	548	584	6.6
Ionia Nisia	146	146	0.0	457	489	7.0
Dytiki Ellada	389	396	1.8	999	1,067	6.8
Stereia Ellada	312	309	-1.0	849	895	5.4
Peloponnisos	337	337	0.0	878	952	8.4
Attiki	1,499	1,599	6.7	5,697	6,348	11.4
Voreio Aigaio	151	150	-0.7	490	527	7.6
Notio Aigaio	224	230	2.7	764	825	8.0
Kriti	432	438	1.4	1,576	1,698	7.7
TOTAL	5,626	5,718	1.6	17,938	19,209	7.1

¹ Teaching staff includes teachers classified as absent. "Absent teachers" are the teachers with a fixed post in the school unit, who are absent for more than 20 days (due to illness, training, maternity leave, etc) and their replacement is pending, as well as the teachers who are seconded to other administrative posts of the Ministry of Education and Religious Affairs or elsewhere.

Table 3. Pupils enrolled by Type of School Unit and NUTS 2 Region (Kindergartens)

<i>By Type of School Unit</i>									
School Units	Greece total			Males			Females		
	2020/21	2021/22	Change (%)	2020/21	2021/22	Change (%)	2020/21	2021/22	Change (%)
Public	154,311	153,108	-0.8	79,541	79,109	-0.5	74,770	73,999	-1.0
Private	20,797	24,264	16.7	10,725	12,626	17.7	10,072	11,638	15.5
TOTAL	175,108	177,372	1.3	90,266	91,735	1.6	84,842	85,637	0.9
<i>By Region</i>									
NUTS 2 Region	Greece total			Males			Females		
	2020/21	2021/22	Change (%)	2020/21	2021/22	Change (%)	2020/21	2021/22	Change (%)
Anatoliki Makedonia, Thraki	9,600	9,462	-1.4	4,979	4,938	-0.8	4,621	4,524	-2.1
Kentriki Makedonia	30,079	29,338	-2.5	15,413	15,222	-1.2	14,666	14,116	-3.8
Dytiki Makedonia	3,937	3,854	-2.1	1,958	1,945	-0.7	1,979	1,909	-3.5
Thessalia	11,357	11,159	-1.7	5,871	5,767	-1.8	5,486	5,392	-1.7
Ipeiros	4,933	4,798	-2.7	2,547	2,477	-2.7	2,386	2,321	-2.7
Ionia Nisia	3,908	3,868	-1.0	2,120	2,051	-3.3	1,788	1,817	1.6
Dytiki Ellada	10,735	10,596	-1.3	5,528	5,470	-1.0	5,207	5,126	-1.6
Stereia Ellada	8,104	8,001	-1.3	4,165	4,182	0.4	3,939	3,819	-3.0
Peloponnisos	8,586	8,759	2.0	4,411	4,514	2.3	4,175	4,245	1.7
Attiki	60,236	63,685	5.7	31,092	32,740	5.3	29,144	30,945	6.2
Voreio Aigaio	3,458	3,443	-0.4	1,811	1,798	-0.7	1,647	1,645	-0.1
Notio Aigaio	7,170	7,331	2.2	3,792	3,833	1.1	3,378	3,498	3.6
Kriti	13,005	13,078	0.6	6,579	6,798	3.3	6,426	6,280	-2.3
TOTAL	175,108	177,372	1.3	90,266	91,735	1.6	84,842	85,637	0.9

Graph 2
Percentage distribution of pupils enrolled in Kindergartens, by NUTS 2 Region (public / private), school year 2021/2022



B. PRIMARY SCHOOLS

Tables 4, 5 and 6 present data on the number of primary schools, teaching staff, pupils enrolled and graduates.

Tables 4. School Units and Teaching Staff² by Type of School Unit and NUTS 2 Region (Primary Schools)

<i>By Type of School Unit</i>						
School Units	Number of School Units			Teaching Staff		
	2020/21	2021/22	Change (%)	2020/21	2021/22	Change (%)
Public	4,242	4,202	-0.9	70,720	68,928	-2.5
Private	160	159	-0.6	3,953	3,629	-8.2
TOTAL	4,402	4,361	-0.9	74,673	72,557	-2.8
<i>By NUTS 2 Region</i>						
NUTS 2 Region	Number of School Units			Teaching Staff		
	2020/21	2021/22	Change (%)	2020/21	2021/22	Change (%)
Anatoliki Makedonia, Thraki	327	315	-3.7	4,151	4,015	-3.3
Kentriki Makedonia	738	738	0.0	12,883	12,525	-2.8
Dytiki Makedonia	154	151	-1.9	2,100	2,024	-3.6
Thessalia	347	339	-2.3	4,897	4,730	-3.4
Ipeiros	185	179	-3.2	2,294	2,138	-6.8
Ionia Nisia	104	105	1.0	1,674	1,669	-0.3
Dytiki Ellada	358	353	-1.4	4,545	4,513	-0.7
Stereia Ellada	284	283	-0.4	3,557	3,420	-3.9
Peloponnisos	263	259	-1.5	3,567	3,509	-1.6
Attiki	1,007	1,006	-0.1	24,998	24,198	-3.2
Voreio Aigaio	135	135	0.0	1,682	1,620	-3.7
Notio Aigaio	184	183	-0.5	2,766	2,611	-5.6
Kriti	316	315	-0.3	5,559	5,585	0.5
TOTAL	4,402	4,361	-0.9	74,673	72,557	-2.8

² Teaching staff includes teachers classified as absent. "Absent teachers" are the teachers with a fixed post in the school unit, who are absent for more than 20 days (due to illness, training, maternity leave, etc) and their replacement is pending, as well as the teachers who are seconded to other administrative posts of the Ministry of Education and Religious Affairs or elsewhere.

Table 5. Pupils enrolled by Type of School Unit and NUTS 2 Region (Primary Schools)

<i>By Type of School Unit</i>									
School Units	Greece total			Males			Females		
	2020/21	2021/22	Change (%)	2020/21	2021/22	Change (%)	2020/21	2021/22	Change (%)
Public	564,836	543,398	-3.8	289,665	278,730	-3.8	275,171	264,668	-3.8
Private	41,564	40,634	-2.2	21,391	20,904	-2.3	20,173	19,730	-2.2
TOTAL	606,400	584,032	-3.7	311,056	299,634	-3.7	295,344	284,398	-3.7
<i>By Region</i>									
NUTS 2 Region	Greece total			Males			Females		
	2020/21	2021/22	Change (%)	2020/21	2021/22	Change (%)	2020/21	2021/22	Change (%)
Anatoliki Makedonia, Thraki	32,397	30,943	-4.5	16,630	15,887	-4.5	15,767	15,056	-4.5
Kentriki Makedonia	104,539	99,281	-5.0	53,409	50,718	-5.0	51,130	48,563	-5.0
Dytiki Makedonia	13,695	13,096	-4.4	7,029	6,673	-5.1	6,666	6,423	-3.6
Thessalia	39,887	37,779	-5.3	20,509	19,466	-5.1	19,378	18,313	-5.5
Ipeiros	17,261	16,584	-3.9	8,844	8,454	-4.4	8,417	8,130	-3.4
Ionia Nisia	12,730	12,507	-1.8	6,580	6,469	-1.7	6,150	6,038	-1.8
Dytiki Ellada	37,279	35,996	-3.4	19,187	18,464	-3.8	18,092	17,532	-3.1
Stereia Ellada	27,740	27,002	-2.7	14,360	13,936	-3.0	13,380	13,066	-2.3
Peloponnisos	30,060	28,966	-3.6	15,378	14,866	-3.3	14,682	14,100	-4.0
Attiki	215,798	208,788	-3.2	110,707	107,175	-3.2	105,091	101,613	-3.3
Voreio Aigaio	11,048	10,603	-4.0	5,637	5,453	-3.3	5,411	5,150	-4.8
Notio Aigaio	22,400	22,014	-1.7	11,464	11,365	-0.9	10,936	10,649	-2.6
Kriti	41,566	40,473	-2.6	21,322	20,708	-2.9	20,244	19,765	-2.4
TOTAL	606,400	584,032	-3.7	311,056	299,634	-3.7	295,344	284,398	-3.7

Graph 3
Percentage distribution of pupils enrolled in Primary Schools
by NUTS 2 Region, school year 2021/2022

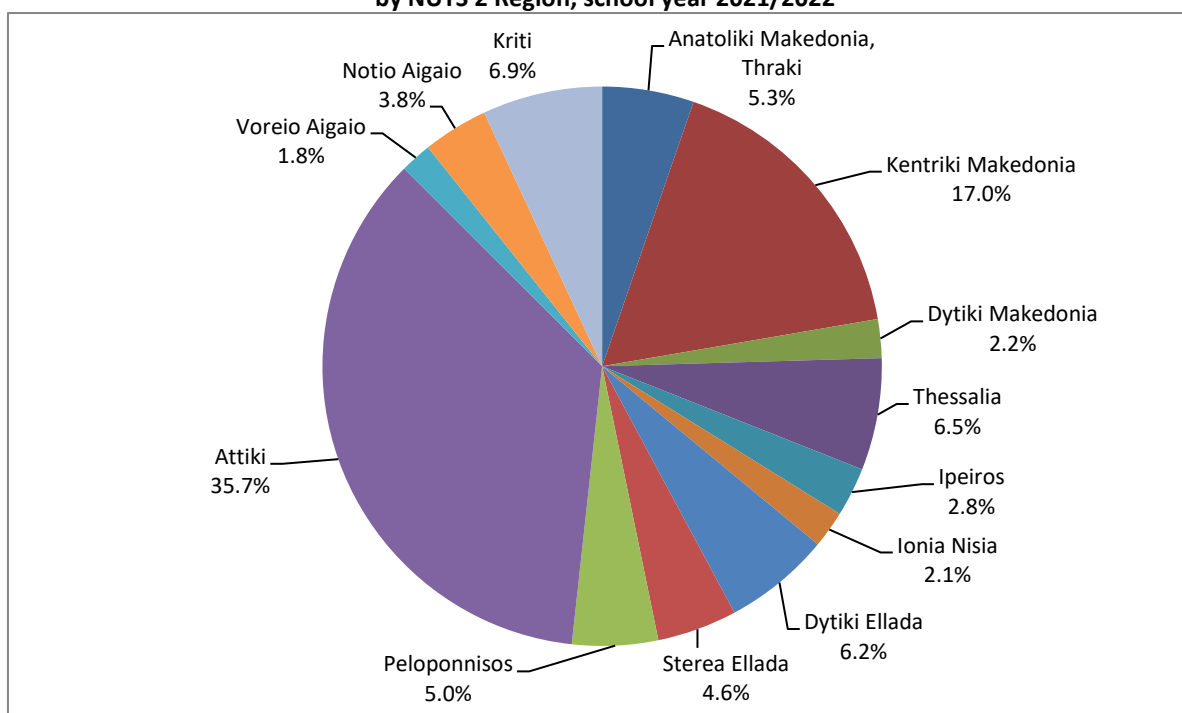


Table 6. Graduates by Type of School Unit and NUTS 2 Region (Primary Schools)

<i>By Type of School Unit</i>			
School Units	Graduates		
	2020/21	2021/22	Change (%)
Public	101,975	97,513	-4.4
Private	6,574	6,525	-0.7
TOTAL	108,549	104,038	-4.2
<i>By Region</i>			
NUTS 2 Region	Graduates		
	2020/21	2021/22	Change (%)
Anatoliki Makedonia, Thraki	5,880	5,521	-6.1
Kentriki Makedonia	19,187	18,073	-5.8
Dytiki Makedonia	2,518	2,451	-2.7
Thessalia	7,280	6,982	-4.1
Ipeiros	3,156	3,090	-2.1
Ionia Nisia	2,240	2,151	-4.0
Dytiki Ellada	6,678	6,417	-3.9
Stereia Ellada	4,897	4,772	-2.6
Peloponnisos	5,471	5,299	-3.1
Attiki	37,963	36,435	-4.0
Voreio Aigaio	1,900	1,820	-4.2
Notio Aigaio	3,887	3,847	-1.0
Kriti	7,492	7,180	-4.2
TOTAL	108,549	104,038	-4.2

EXPLANATORY NOTES

Surveys on Pre-Primary and Primary Education Pre-primary and Primary Education includes Kindergartens and Primary Schools. The relevant surveys are conducted on a yearly basis, with the aim of collecting data on the number of pupils enrolled, the school units and the number of teaching staff.

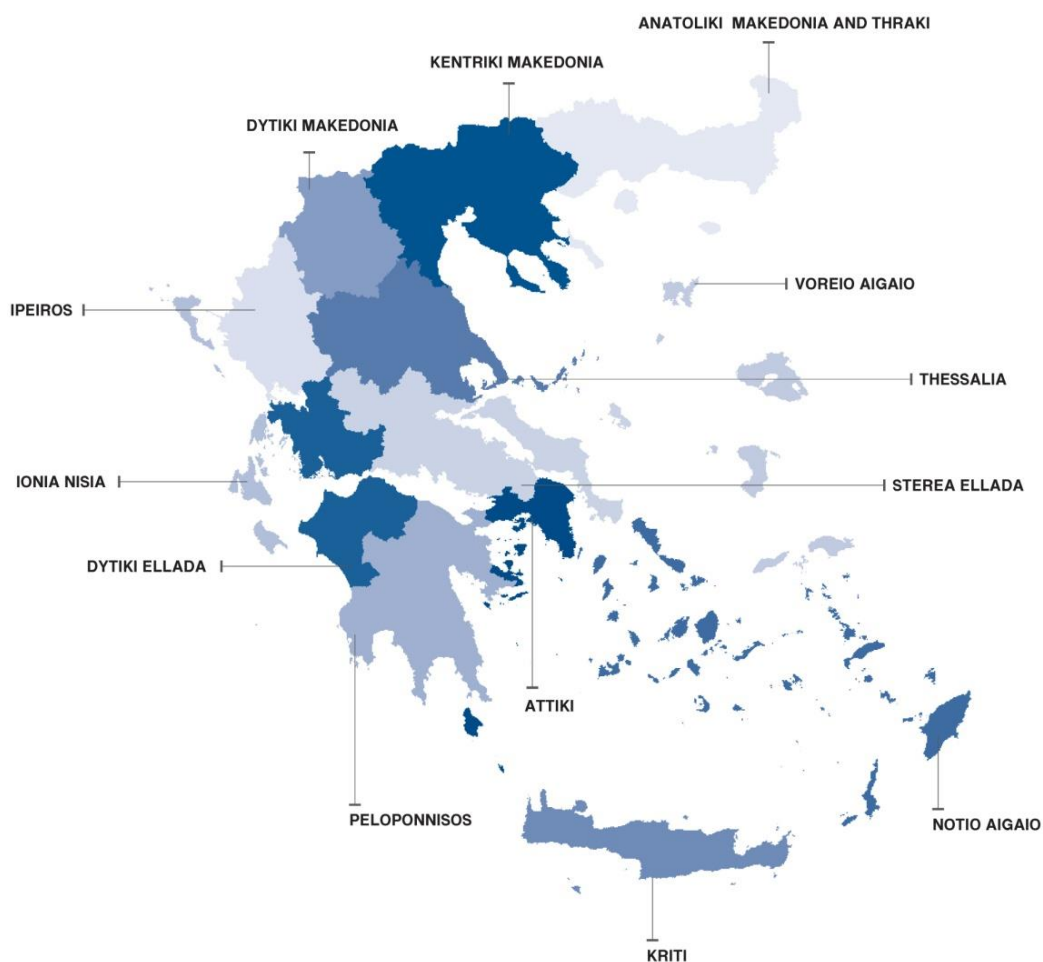
Legal Framework The surveys are conducted by virtue of Regulation 452/2008 of the European Parliament and the Council and implementing Regulation 912/2013 of the European Commission.

Statistical Units The statistical units are the school units.

Coverage Greece total.

Geographical Classification The geographical classification is based on Nomenclature of Territorial Units for Statistics.

Map of the 13 Regions (NUTS 2) of Greece



- Dissemination of results** The data are posted on a yearly basis on the website of ELSTAT and are published in a relevant Press Release.
- Reference period** The data of the surveys refer to the end of school year 2021/2022. For comparability reasons, the data of the end of the previous school year 2020/2021 are also provided.
- Methodology and coverage** Until the school year 2013/2014, the surveys on Pre-Primary and Primary Education used to be census, yearly surveys and they were conducted by ELSTAT.
- From the school year 2014/2015 to the school year 2020/2021, data of these surveys were collected as follows:
- As regards public school units, the data were extracted from the “live” e-platform “MySchool” of the Ministry of Education and Religious Affairs.
 - As regards private school units, data were collected from the questionnaires that were sent to the relevant school units.
- For the school year 2021/22 the data are extracted from the “live” e-platform “MySchool” of the Ministry of Education and Religious Affairs for both public and private school units.
- References** More information, such as tables with the survey results, samples of questionnaires, etc, on the Survey on Pre-Primary and Primary Education can be found on the webpage of ELSTAT www.statistics.gr and at the link: “Statistics” / Population and Social Conditions / Education / Primary Education / Kindergartens (Beginning – End of school year) or Primary Schools (Beginning – End of school year)”.