



PRESS RELEASE

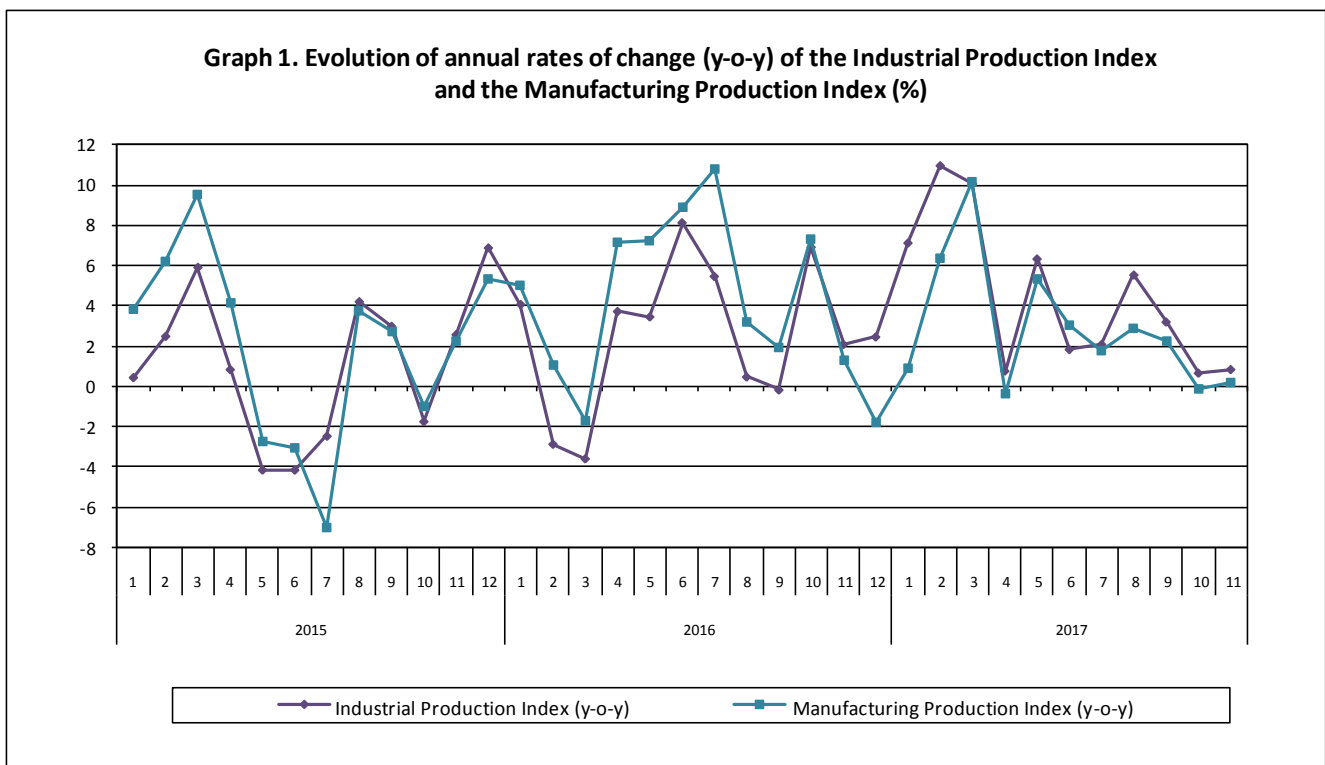
INDUSTRIAL PRODUCTION INDEX: November 2017, y-o-y increase of 0.8%

The evolution of the Industrial Production Index (IPI) with base year 2010=100.0 in November 2017, on the basis of provisional and working day adjusted data, is as follows:

The Overall Industrial Production Index in November 2017 recorded an increase of 0.8% compared with November 2016. The corresponding annual rate of change of the Overall IPI in November 2016 was 2.1% (Table 1).

The average Overall Industrial Production Index for the period from January to November 2017 recorded an increase of 4.4% compared with the average IPI of the period from January to November 2016 (Table 2).

The seasonally adjusted Overall Industrial Production Index in November 2017 recorded a decrease of 0.2% compared with October 2017 (Table 4).



Information:

Economic and Short-Term Indices Division
Production Indices Section

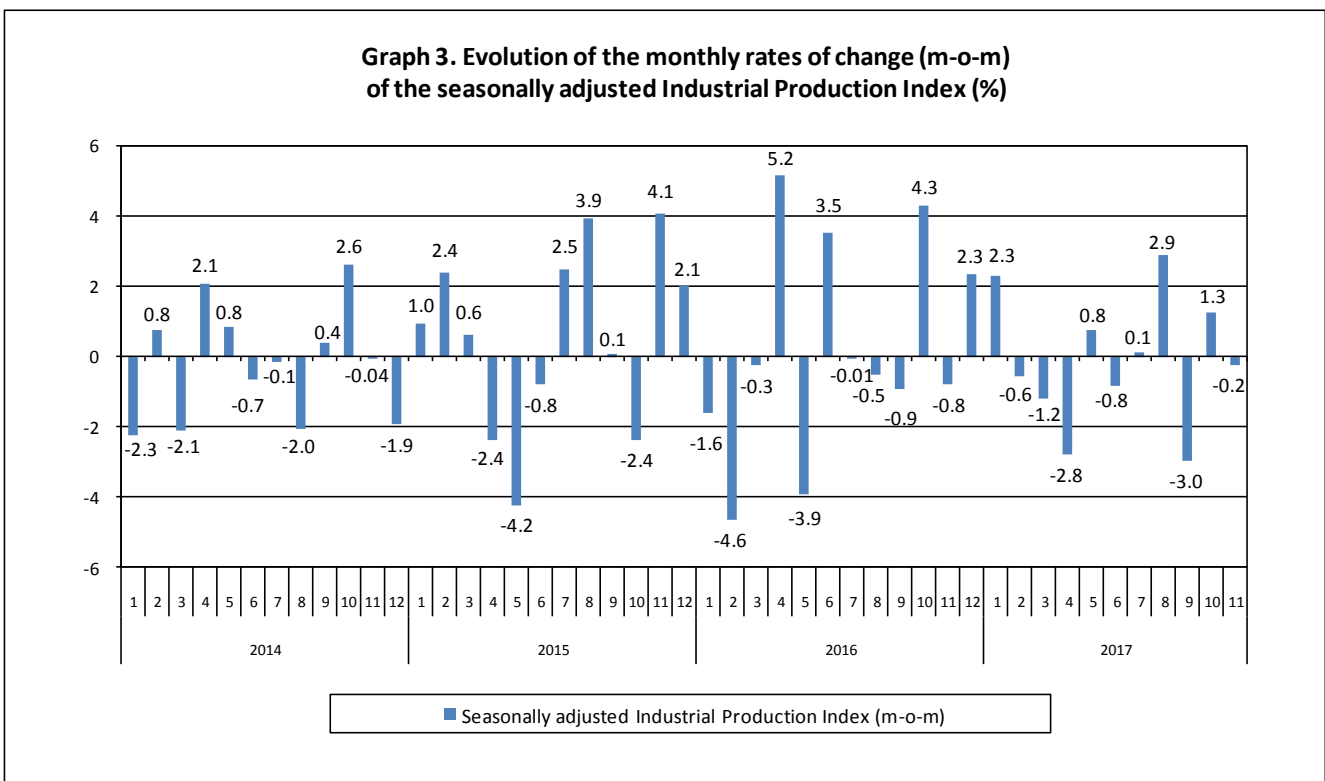
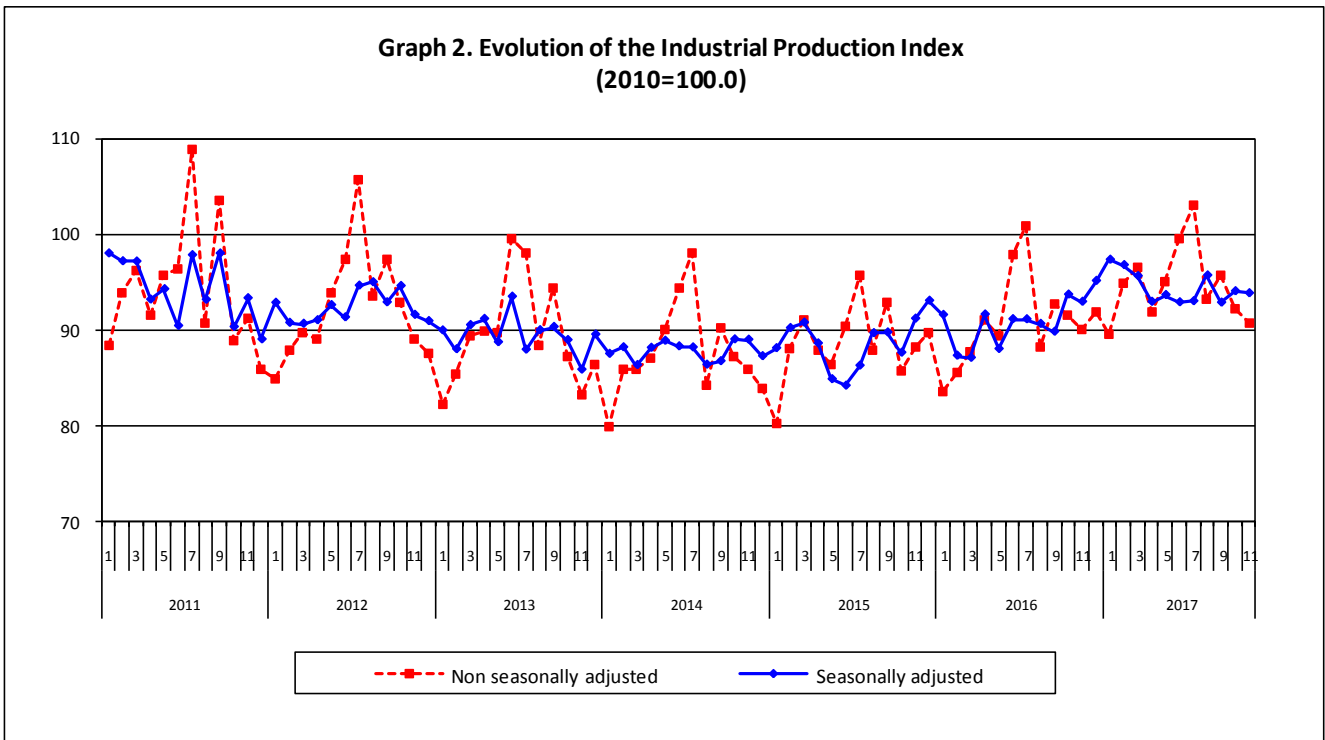
Diamantaki Aikaterini, Thymoglou Georgia

Tel: +30 213 135 2122, +30 213 135 2737

Fax: +30 213 135 2738

E-mail: a.diamantaki@statistics.gr, g.thymoglou@statistics.gr

The following graphs depict the evolution of the seasonally and non-seasonally adjusted Overall Industrial Production Index, as well as the monthly rates of change (m-o-m) of the seasonally adjusted index.



It should be noted that the time series with the seasonally adjusted indices is recalculated every time a new observation is added in the time series. Therefore, the seasonally adjusted data differ from the data published in the previous Press Release.

Evolution of the Industrial Production Index in November 2017

I. Annual changes: November 2017/ November 2016 (Table 1)

The 0.8% increase of the working day adjusted Overall IPI in November 2017, compared with the corresponding index in November 2016, is due to the annual changes of the sub-indices in the following industrial sections:

1. Increase of:

- 0.2% in the Manufacturing Production Index. The increase was the result of the annual changes of the sub-indices in the following 2-digit divisions: coke and refined petroleum products, basic pharmaceutical products and pharmaceutical preparations, computers, electronic and optical products, machinery and equipment.
- 6.5% in the Electricity Production Index.

2. Decrease of:

- 8.4% in the Mining and Quarrying Production Index. The decrease was the result of the annual changes of the sub-indices in the following 2-digit divisions: mining of coal and lignite, extraction of crude petroleum and natural gas.
- 4.2% in the Water Supply Production Index.

II. Rates of change of the average index in the period January – November 2017 compared with the corresponding index of the period January – November 2016 (Table 2)

The 4.4% increase of the working day adjusted Overall IPI in the 11-month period January – November 2017, compared with the corresponding index in January – November 2016, is due to the corresponding rates of change of the sub-indices in the following industrial sections:

1. Increase of:

- 8.1% in the Mining and Quarrying Production Index.
- 2.9% in the Manufacturing Production Index.
- 10.3% in the Electricity Production Index.

2. Decrease of:

- 2.4% in the Water Supply Production Index.

III. Monthly changes: November 2017/ October 2017 (Table 4)

The 0.2% decrease of the seasonally adjusted Overall IPI in November 2017, compared with the corresponding index in October 2017, is due to the monthly changes of the sub-indices in the following industrial sections:

1. Decrease of:

- 11.2% in the Mining and Quarrying Production Index
- 1.4% in the Manufacturing Production Index.
- 1.6% in the Water Supply Production Index.

2. Increase of:

- 6.5% in the Electricity Production Index.

The following graph depicts the evolution of the Industrial Production Index and the Industrial Sections Indices.

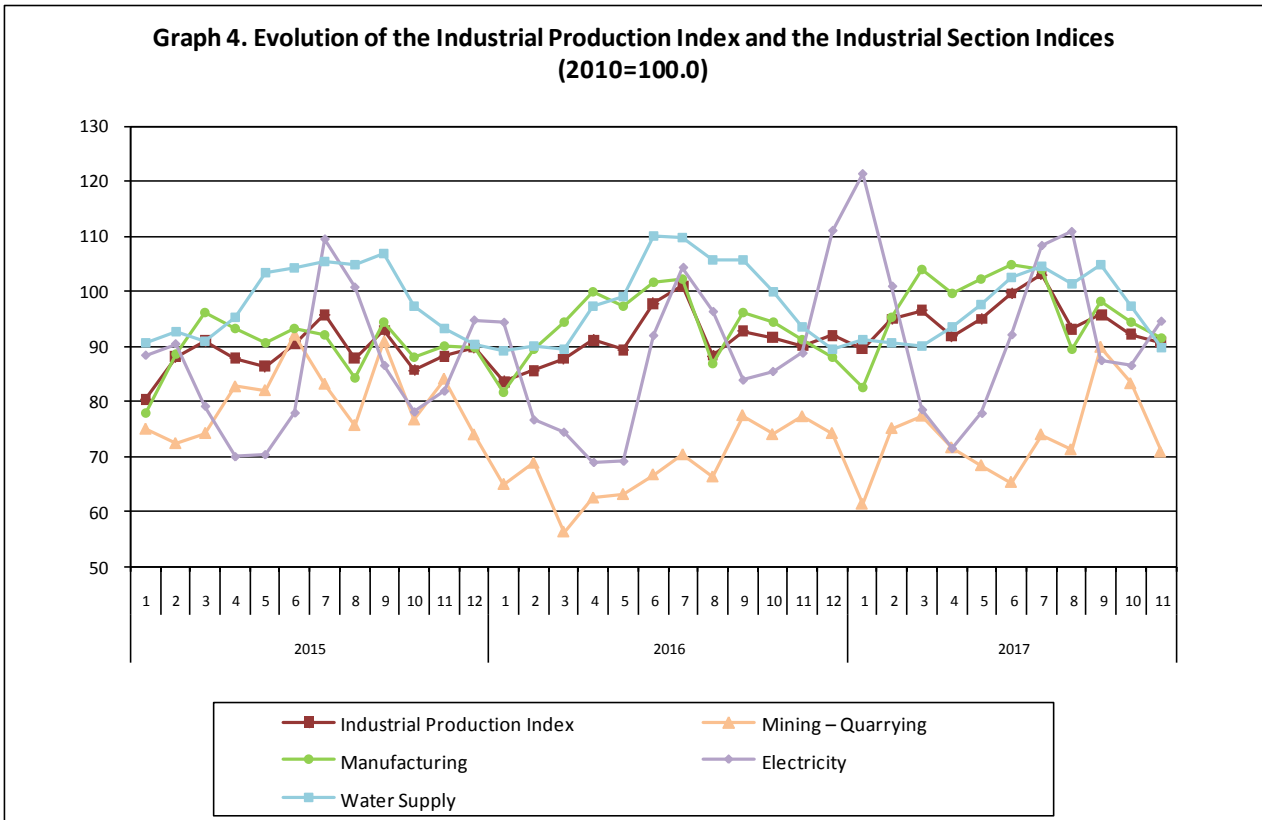


Table 1. Annual rates of change of the Industrial Production Index*(Working day adjusted data, according to the real number of working days)***Base year: 2010=100.0**

Code	Division	November			Rate of change (%)	
		2017*	2016	2015	2017/2016	2016/2015
OVERALL INDEX		90.77	90.01	88.16	0.8	2.1
B	MINING AND QUARRYING	70.77	77.23	84.06	-8.4	-8.1
05	Mining of coal and lignite	64.10	74.04	81.50	-13.4	-9.1
06	Extraction of crude petroleum and natural gas	133.63	147.87	56.41	-9.6	162.1
07	Mining of metal ores	83.03	78.94	87.59	5.2	-9.9
08	Other mining and quarrying products	74.76	76.77	91.11	-2.6	-15.7
C	MANUFACTURING	91.46	91.30	90.13	0.2	1.3
10	Food	84.46	84.37	83.11	0.1	1.5
11	Beverages	53.20	55.04	62.65	-3.3	-12.2
12	Tobacco products	90.40	128.55	130.84	-29.7	-1.7
13	Textiles	66.57	65.66	71.13	1.4	-7.7
14	Wearing apparel	48.87	49.19	58.06	-0.7	-15.3
15	Leather and related products	45.88	50.98	50.15	-10.0	1.7
16	Wood and cork	48.80	50.01	44.84	-2.4	11.5
17	Paper and paper products	97.98	95.55	96.63	2.6	-1.1
18	Printing and recording services	47.47	52.70	56.66	-9.9	-7.0
19	Coke and refined petroleum products	137.33	128.19	137.07	7.1	-6.5
20	Chemicals and chemical products	92.82	95.40	91.56	-2.7	4.2
21	Basic pharmaceutical products and pharmaceutical preparations	126.36	114.20	100.52	10.7	13.6
22	Rubber and plastic products	92.87	91.42	100.01	1.6	-8.6
23	Other non-metallic mineral products	68.97	67.11	67.98	2.8	-1.3
24	Basic metals	119.84	124.47	98.69	-3.7	26.1
25	Fabricated metal products	76.84	88.35	74.32	-13.0	18.9
26	Computers, electronic and optical products	122.23	106.48	107.09	14.8	-0.6
27	Electrical equipment	75.77	78.61	71.57	-3.6	9.8
28	Machinery and equipment n. e. c.	114.92	102.28	96.31	12.4	6.2
29	Motor vehicles, trailers and semi-trailers	97.97	114.94	50.65	-14.8	126.9
30	Other transport equipment	77.71	86.33	92.22	-10.0	-6.4
31	Furniture	49.41	56.14	52.96	-12.0	6.0
32	Other manufactured goods	93.12	87.07	84.62	6.9	2.9
33	Repair and installation services of machinery and equipment	64.46	68.65	75.93	-6.1	-9.6
D	ELECTRICITY	94.54	88.75	81.83	6.5	8.5
35	Production and distribution of electricity	94.54	88.75	81.83	6.5	8.5
E	WATER SUPPLY	89.68	93.64	93.27	-4.2	0.4
36	Treatment and supply services of natural water	89.68	93.64	93.27	-4.2	0.4
MAIN INDUSTRIAL GROUPINGS						
1	Energy	102.96	98.77	97.78	4.2	1.0
2	Intermediate goods	88.36	89.35	86.60	-1.1	3.2
3	Capital goods	80.13	86.27	76.00	-7.1	13.5
4	Consumer Durables	56.83	57.68	60.42	-1.5	-4.5
5	Consumer Non-Durables	80.39	81.16	80.56	-0.9	0.7

* Provisional data

Note: The indices are rounded up to two decimal figures when published and percentage changes up to one decimal figure when published.

Table 2. Average indices of the period January – November and rates of change (%) of the Industrial Production Index
(Working day adjusted data, according to the real number of working days)

Base year: 2010=100.0

Code	Division	Average indices of the period Jan.-Nov.			Rate of change (%)	
		2017*	2016	2015	2017/2016	2016/2015
OVERALL INDEX		94.77	90.80	88.59	4.4	2.5
B	MINING AND QUARRYING	73.44	67.93	80.77	8.1	-15.9
05	Mining of coal and lignite	65.74	55.01	81.75	19.5	-32.7
06	Extraction of crude petroleum and natural gas	110.71	141.12	59.11	-21.5	138.7
07	Mining of metal ores	84.02	82.81	77.82	1.5	6.4
08	Other mining and quarrying products	82.85	83.79	81.83	-1.1	2.4
C	MANUFACTURING	96.88	94.11	89.86	2.9	4.7
10	Food	97.15	95.60	93.37	1.6	2.4
11	Beverages	85.04	91.10	90.69	-6.7	0.5
12	Tobacco products	98.98	120.56	117.54	-17.9	2.6
13	Textiles	64.55	66.31	64.76	-2.6	2.4
14	Wearing apparel	45.66	50.01	54.38	-8.7	-8.0
15	Leather and related products	48.35	50.60	45.82	-4.4	10.4
16	Wood and cork	42.81	42.34	38.60	1.1	9.7
17	Paper and paper products	99.76	97.91	99.45	1.9	-1.5
18	Printing and recording services	46.13	52.64	52.38	-12.4	0.5
19	Coke and refined petroleum products	133.47	128.20	118.60	4.1	8.1
20	Chemicals and chemical products	105.61	104.21	96.53	1.3	8.0
21	Basic pharmaceutical products and pharmaceutical preparations	123.11	108.43	102.52	13.5	5.8
22	Rubber and plastic products	93.18	92.55	93.62	0.7	-1.1
23	Other non-metallic mineral products	62.73	64.21	55.59	-2.3	15.5
24	Basic metals	137.61	113.67	107.45	21.1	5.8
25	Fabricated metal products	85.96	83.16	75.69	3.4	9.9
26	Computers, electronic and optical products	105.94	96.50	120.02	9.8	-19.6
27	Electrical equipment	77.37	72.63	70.21	6.5	3.4
28	Machinery and equipment n. e. c.	97.61	95.20	84.24	2.5	13.0
29	Motor vehicles, trailers and semi-trailers	80.98	66.15	53.38	22.4	23.9
30	Other transport equipment	66.37	77.02	73.83	-13.8	4.3
31	Furniture	48.83	51.57	46.05	-5.3	12.0
32	Other manufactured goods	93.70	89.29	87.56	4.9	2.0
33	Repair and installation services of machinery and equipment	52.51	51.35	55.01	2.3	-6.7
D	ELECTRICITY	93.60	84.89	84.78	10.3	0.1
35	Production and distribution of electricity	93.60	84.89	84.78	10.3	0.1
E	WATER SUPPLY	96.67	99.08	98.59	-2.4	0.5
36	Treatment and supply services of natural water	96.67	99.08	98.59	-2.4	0.5
MAIN INDUSTRIAL GROUPINGS						
1	Energy	102.15	95.42	94.89	7.0	0.6
2	Intermediate goods	93.06	88.10	83.73	5.6	5.2
3	Capital goods	69.86	68.08	65.80	2.6	3.5
4	Consumer Durables	55.91	55.38	54.93	1.0	0.8
5	Consumer Non-Durables	93.95	94.09	91.45	-0.1	2.9

* Provisional data

Note: The indices are rounded up to two decimal figures when published and percentage changes up to one decimal figure when published.

Table 3. Monthly rate of change of the Industrial Production Index*(Working day adjusted data, according to the real number of working days)*

Base year: 2010=100.0

Code	Division	November 2017*	October 2017**	Rate of change (%) Nov. 2017/ Oct. 2017
OVERALL INDEX		90.77	92.21	-1.6
B	MINING AND QUARRYING	70.77	83.23	-15.0
05	Mining of coal and lignite	64.10	68.45	-6.4
06	Extraction of crude petroleum and natural gas	133.63	129.77	3.0
07	Mining of metal ores	83.03	103.82	-20.0
08	Other mining and quarrying products	74.76	103.65	-27.9
C	MANUFACTURING	91.46	94.42	-3.1
10	Food	84.46	91.31	-7.5
11	Beverages	53.20	60.97	-12.7
12	Tobacco products	90.40	103.38	-12.6
13	Textiles	66.57	67.78	-1.8
14	Wearing apparel	48.87	49.89	-2.1
15	Leather and related products	45.88	50.81	-9.7
16	Wood and cork	48.80	47.77	2.2
17	Paper and paper products	97.98	105.21	-6.9
18	Printing and recording services	47.47	49.02	-3.2
19	Coke and refined petroleum products	137.33	131.92	4.1
20	Chemicals and chemical products	92.82	108.97	-14.8
21	Basic pharmaceutical products and pharmaceutical preparations	126.36	129.63	-2.5
22	Rubber and plastic products	92.87	98.35	-5.6
23	Other non-metallic mineral products	68.97	66.92	3.1
24	Basic metals	119.84	115.02	4.2
25	Fabricated metal products	76.84	82.68	-7.1
26	Computers, electronic and optical products	122.23	100.90	21.1
27	Electrical equipment	75.77	88.33	-14.2
28	Machinery and equipment n. e. c.	114.92	106.96	7.4
29	Motor vehicles, trailers and semi-trailers	97.97	75.24	30.2
30	Other transport equipment	77.71	71.30	9.0
31	Furniture	49.41	49.62	-0.4
32	Other manufactured goods	93.12	95.71	-2.7
33	Repair and installation services of machinery and equipment	64.46	69.95	-7.9
D	ELECTRICITY	94.54	86.48	9.3
35	Production and distribution of electricity	94.54	86.48	9.3
E	WATER SUPPLY	89.68	97.32	-7.9
36	Treatment and supply services of natural water	89.68	97.32	-7.9
MAIN INDUSTRIAL GROUPINGS				
1	Energy	102.96	98.33	4.7
2	Intermediate goods	88.36	93.81	-5.8
3	Capital goods	80.13	79.35	1.0
4	Consumer Durables	56.83	57.48	-1.1
5	Consumer Non-Durables	80.39	87.13	-7.7

* Provisional data **Revised data

Note: The indices are rounded up to two decimal figures when published and percentage changes up to one decimal figure when published.

Table 4. Monthly rate of change of the seasonally adjusted Industrial Production Index

Base year: 2010=100.0

Code	Division	November 2017*	October 2017**	Rate of change (%) Nov. 2017/ Oct. 2017
OVERALL INDEX		93.83	94.04	-0.2
B	MINING AND QUARRYING	70.01	78.81	-11.2
05	Mining of coal and lignite	64.61	68.06	-5.1
06	Extraction of crude petroleum and natural gas	132.08	134.96	-2.1
07	Mining of metal ores	78.74	95.22	-17.3
08	Other mining and quarrying products	74.06	90.62	-18.3
C	MANUFACTURING	93.83	95.21	-1.4
10	Food	95.34	96.04	-0.7
11	Beverages	82.09	81.41	0.8
12	Tobacco products	82.76	95.41	-13.3
13	Textiles	64.52	63.86	1.0
14	Wearing apparel	45.63	46.09	-1.0
15	Leather and related products	46.32	47.04	-1.5
16	Wood and cork	43.59	44.36	-1.7
17	Paper and paper products	98.11	102.77	-4.5
18	Printing and recording services	44.89	48.14	-6.7
19	Coke and refined petroleum products	135.92	134.23	1.3
20	Chemicals and chemical products	101.71	107.66	-5.5
21	Basic pharmaceutical products and pharmaceutical preparations	126.10	130.72	-3.5
22	Rubber and plastic products	90.09	91.67	-1.7
23	Other non-metallic mineral products	65.11	61.11	6.5
24	Basic metals	120.45	118.59	1.6
25	Fabricated metal products	78.69	83.40	-5.7
26	Computers, electronic and optical products	119.41	108.76	9.8
27	Electrical equipment	73.57	83.80	-12.2
28	Machinery and equipment n. e. c.	108.61	104.00	4.4
29	Motor vehicles, trailers and semi-trailers	78.26	75.12	4.2
30	Other transport equipment	68.80	70.14	-1.9
31	Furniture	46.66	48.17	-3.1
32	Other manufactured goods	96.21	95.97	0.2
33	Repair and installation services of machinery and equipment	55.50	58.05	-4.4
D	ELECTRICITY	98.34	92.38	6.5
35	Production and distribution of electricity	98.34	92.38	6.5
E	WATER SUPPLY	94.79	96.36	-1.6
36	Treatment and supply services of natural water	94.79	96.36	-1.6
MAIN INDUSTRIAL GROUPINGS				
1	Energy	105.39	102.17	3.2
2	Intermediate goods	87.60	90.40	-3.1
3	Capital goods	70.51	72.48	-2.7
4	Consumer Durables	53.91	55.62	-3.1
5	Consumer Non-Durables	91.10	93.20	-2.3

* Provisional data ** Revised data

Notes:

- 1. The indices are rounded up to two decimal figures when published and percentage changes up to one decimal figure when published.*
- 2. The whole time-series with seasonally adjusted indices is recalculated every time a new observation is added in the time-series.*

Table 5. Evolution of the Overall Industrial Production Index

(Working day adjusted data, according to the real number of working days)

Base year: 2010=100.0

Year and month	Overall Index	Monthly rate of change (%)	Annual rate of change (%)	12-month average indices (moving average)	Rate of change of the 12-month average indices (%)
2015:					
1	80.34	-4.3	0.4	87.80	-1.7
2	88.08	9.6	2.5	87.98	-1.5
3	90.99	3.3	5.9	88.40	-0.7
4	87.86	-3.4	0.8	88.46	-0.4
5	86.37	-1.7	-4.1	88.15	-0.8
6	90.46	4.7	-4.1	87.83	-0.7
7	95.71	5.8	-2.5	87.62	-0.9
8	87.87	-8.2	4.2	87.92	-0.2
9	92.93	5.8	3.0	88.15	0.5
10	85.68	-7.8	-1.7	88.02	0.3
11	88.16	2.9	2.6	88.20	0.3
12	89.77	1.8	6.9	88.68	1.0
Annual average	88.68	–	–	88.68	1.0
2016:					
1	83.61	-6.9	4.1	88.96	1.3
2	85.56	2.3	-2.9	88.75	0.9
3	87.73	2.5	-3.6	88.48	0.1
4	91.13	3.9	3.7	88.75	0.3
5	89.36	-1.9	3.5	89.00	1.0
6	97.82	9.5	8.1	89.61	2.0
7	100.94	3.2	5.5	90.05	2.8
8	88.29	-12.5	0.5	90.08	2.5
9	92.77	5.1	-0.2	90.07	2.2
10	91.60	-1.3	6.9	90.56	2.9
11	90.01	-1.7	2.1	90.72	2.8
12	91.98	2.2	2.5	90.90	2.5
Annual average	90.90	–	–	90.90	2.5
2017:					
1	89.57	-2.6	7.1	91.40	2.7
2	94.94	6.0	11.0	92.18	3.9
3	96.56	1.7	10.1	92.91	5.0
4	91.83	-4.9	0.8	92.97	4.8
5	95.02	3.5	6.3	93.44	5.0
6	99.62	4.8	1.8	93.59	4.4
7	103.05	3.4	2.1	93.77	4.1
8	93.18	-9.6	5.5	94.18	4.5
9	95.74	2.8	3.2	94.42	4.8
10**	92.21	-3.7	0.7	94.48	4.3
11*	90.77	-1.6	0.8	94.54	4.2

* Provisional data ** Revised data

Note: The indices are rounded up to two decimal figures when published and percentage changes up to one decimal figure when published.

Table 6. Monthly evolution of the seasonally adjusted Overall Industrial Production Index and Main Industrial Groupings

Base year: 2010=100.0

Year and month	Overall Index		Energy		Intermediate goods		Capital goods		Consumer durables		Consumer non-durables		
	Index	Monthly rate of change (%)	Index	Monthly rate of change (%)	Index	Monthly rate of change (%)	Index	Monthly rate of change (%)	Index	Monthly rate of change (%)	Index	Monthly rate of change (%)	
2015:	1	88.09	1.0	95.65	3.3	79.65	-4.1	80.90	18.5	56.08	-7.6	89.02	-0.6
	2	90.19	2.4	97.34	1.8	82.90	4.1	73.13	-9.6	55.54	-1.0	92.96	4.4
	3	90.76	0.6	97.30	-0.04	84.73	2.2	76.49	4.6	57.44	3.4	92.50	-0.5
	4	88.59	-2.4	94.35	-3.0	84.50	-0.3	73.34	-4.1	56.38	-1.9	89.72	-3.0
	5	84.85	-4.2	83.02	-12.0	87.70	3.8	68.25	-6.9	55.54	-1.5	90.22	0.6
	6	84.17	-0.8	84.45	1.7	85.03	-3.0	64.53	-5.4	54.66	-1.6	89.16	-1.2
	7	86.27	2.5	98.91	17.1	76.72	-9.8	63.35	-1.8	48.34	-11.6	84.94	-4.7
	8	89.66	3.9	97.40	-1.5	83.32	8.6	58.01	-8.4	68.40	41.5	93.08	9.6
	9	89.73	0.1	100.38	3.1	79.14	-5.0	68.78	18.6	53.77	-21.4	91.64	-1.6
	10	87.62	-2.4	96.12	-4.2	81.18	2.6	68.17	-0.9	51.81	-3.6	88.27	-3.7
	11	91.17	4.1	100.21	4.2	85.46	5.3	67.31	-1.3	56.69	9.4	91.30	3.4
	12	93.04	2.1	100.28	0.1	86.49	1.2	71.32	6.0	72.19	27.3	95.17	4.2
	Annual average	88.68		95.45		83.07		69.47		57.24		90.66	
2016:	1	91.56	-1.6	98.87	-1.4	84.83	-1.9	64.35	-9.8	54.27	-24.8	95.99	0.9
	2	87.31	-4.6	88.93	-10.1	85.41	0.7	65.31	1.5	51.46	-5.2	93.92	-2.2
	3	87.08	-0.3	87.59	-1.5	86.46	1.2	67.26	3.0	53.59	4.1	93.43	-0.5
	4	91.61	5.2	94.61	8.0	88.54	2.4	70.41	4.7	58.71	9.5	97.01	3.8
	5	88.01	-3.9	92.94	-1.8	83.25	-6.0	69.85	-0.8	55.88	-4.8	91.58	-5.6
	6	91.12	3.5	92.79	-0.2	92.46	11.1	74.15	6.2	56.34	0.8	93.42	2.0
	7	91.11	-0.01	96.55	4.0	86.19	-6.8	71.64	-3.4	58.46	3.8	94.44	1.1
	8	90.63	-0.5	96.92	0.4	88.38	2.5	76.72	7.1	60.30	3.1	88.87	-5.9
	9	89.81	-0.9	98.27	1.4	85.82	-2.9	74.52	-2.9	54.86	-9.0	87.25	-1.8
	10	93.69	4.3	103.24	5.1	87.93	2.5	73.83	-0.9	55.78	1.7	92.44	6.0
	11	92.94	-0.8	101.15	-2.0	88.42	0.6	75.93	2.8	54.51	-2.3	91.81	-0.7
	12	95.12	2.3	109.84	8.6	85.76	-3.0	71.46	-5.9	58.48	7.3	90.77	-1.1
	Annual average	90.83		96.81		86.95		71.29		56.05		92.58	
2017:	1	97.33	2.3	113.38	3.2	91.38	6.6	75.17	5.2	51.68	-11.6	88.14	-2.9
	2	96.77	-0.6	105.82	-6.7	93.57	2.4	78.63	4.6	57.89	12.0	93.49	6.1
	3	95.61	-1.2	101.23	-4.3	94.08	0.6	75.85	-3.5	61.00	5.4	95.69	2.3
	4	92.93	-2.8	100.50	-0.7	91.01	-3.3	70.38	-7.2	55.21	-9.5	91.46	-4.4
	5	93.64	0.8	99.99	-0.5	92.47	1.6	72.84	3.5	61.28	11.0	92.43	1.1
	6	92.88	-0.8	99.27	-0.7	91.39	-1.2	71.81	-1.4	57.11	-6.8	92.20	-0.3
	7	93.00	0.1	97.95	-1.3	90.86	-0.6	78.27	9.0	54.81	-4.0	93.69	1.6
	8	95.69	2.9	101.09	3.2	99.20	9.2	72.54	-7.3	52.73	-3.8	92.57	-1.2
	9	92.85	-3.0	99.70	-1.4	91.26	-8.0	69.84	-3.7	54.17	2.7	92.23	-0.4
	10	94.04	1.3	102.17	2.5	90.40	-0.9	72.48	3.8	55.62	2.7	93.20	1.1
	11	93.83	-0.2	105.39	3.2	87.60	-3.1	70.51	-2.7	53.91	-3.1	91.10	-2.3

Notes:

1. The indices are rounded up to two decimal figures when published and percentage changes up to one decimal figure when published.
2. The whole time-series with seasonally adjusted indices is recalculated every time a new observation is added in the time-series.

METHODOLOGICAL NOTES

Generally	The Industrial Production Index (IPI) is compiled since 1959.
Purpose of the index	The IPI is an important business cycle indicator, which shows the monthly activity in the Mining and Quarrying, Manufacturing, Electricity and Water Supply divisions. More specifically, the objective of the Industrial Production Index is to compare the magnitude (volume) of the output in the current month with the corresponding output in any given period which is considered as base period. The IPI shows the evolution of the value added of the production factors cost, at constant prices.
Legal basis	The compilation of the IPI is governed by Council Regulation (EC) No 1165/98 concerning short-term statistics. Furthermore, the IPI is governed by Regulation (EC) No 1893/2006 of the European Parliament and of the Council, by Commission Regulation (EC) No 656/2007 and by Council Regulation (EC) No 451/2008.
Reference period	Month.
Base year	2010=100.0.
Revision	The IPI is a fixed base index. Pursuant to the provisions of Council Regulation No 1165/98 concerning short-term statistics, the index is updated every five (5) years, in years ending in 0 or 5.
Statistical classifications	At the level of branches of economic activities, the classification NACE Rev.2 of Eurostat was used (Regulation No 1893/2006), while at the level of main industrial groups, the allocation of two-digit and three-digit NACE Rev. 2 headings to categories of aggregate classification was used, in accordance with Council Regulation No 656/2007. At product level, the classification CPA 2008 of Eurostat was used, according to Council Regulation No 451/2008.
Geographical coverage	The Index covers the whole Country.
Coverage of economic activities	The index covers all the sections of industry, the main industrial groups, all levels of economic activities (divisions, groups, and classes) and the level of products.
Statistical survey	The data are collected from a sample of 1,338 enterprises. The survey covers 354 products and the measurement of the surveyed products is made in terms of output quantities or in terms of production value or turnover, according to the specific situation in each branch of economic activity.
Seasonal adjustment	Seasonal adjustment is the procedure followed to remove the impact of seasonality on the time-series (i.e. the impact of monthly effects, e.g. holidays, tourist period etc), in order to improve comparability over time. The method used is the TRAMO-SEATS method with the use of JDemetra+ 2.0.0. For the seasonal adjustment of the Industrial Production Index at 2-digit level of NACE Rev.2, at section level (B – Mining and Quarrying, C – Manufacturing, D – Electricity and E – Water Supply) and for the Main Industrial Groupings (MIGs), the direct approach is applied, namely each time-series is seasonally adjusted independently. For the overall Industrial Production Index, the indirect approach is applied, with the seasonally adjusted IPI being computed by aggregating the seasonally adjusted MIGs using appropriate weights.
Publication of data	The IPI with the new base year (2010) is released since August 2014, with June 2014 as the first reference month. Data with base year 2010=100.0 are available from January 2000 onwards.
References	More information about the methodology concerning the compilation and calculation of the index and for the time series is available on the website of the Hellenic Statistical Authority (ELSTAT) (http://www.statistics.gr/en/statistics/-/publication/DKT21/).