



INDUSTRIAL PRODUCTION INDEX: July 2024, y-o-y increase of 10.6%

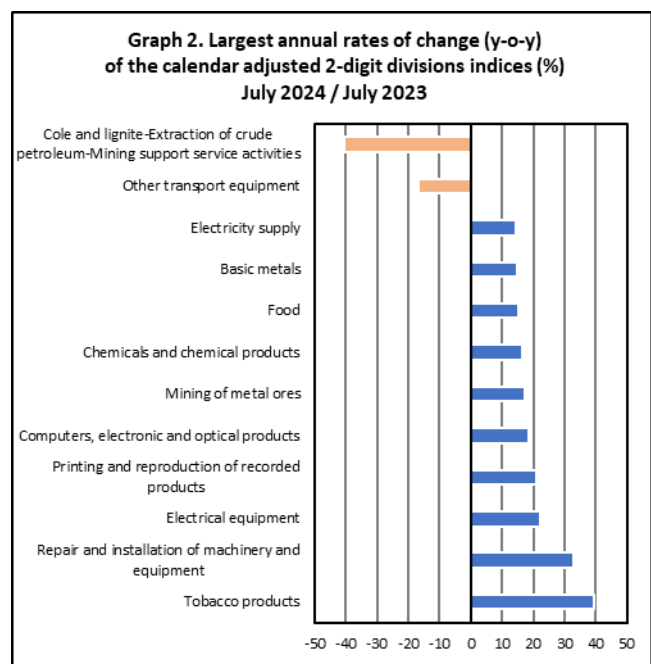
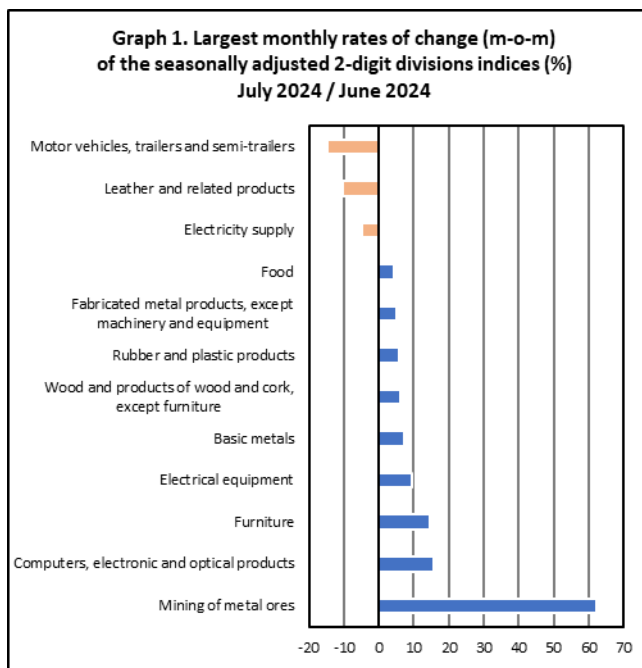
The Hellenic Statistical Authority announces the Industrial Production Index (IPI) with base year 2015=100.0 for July 2024, the evolution of which, on the basis of provisional and working day adjusted data, is as follows:

The Overall Industrial Production Index in July 2024 recorded an increase of 10.6% compared with July 2023. The Overall IPI in July 2023 decreased by 1.7% compared with the corresponding index in July 2022 (Table 1).

The average Overall Industrial Production Index for the period from January to July 2024 recorded an increase of 7.2% compared with the average IPI of the period from January to July 2023 (Table 2).

The seasonally adjusted Overall Industrial Production Index in July 2024 recorded an increase of 1.7% compared with the corresponding index of June 2024 (Table 4).

The index of mining of metal ores division showed the greatest percentage increase, whereas the index motor vehicles, trailers and semi-trailers division recorded the greatest percentage decrease in July 2024 compared with June 2024. Comparing the indices of July 2024 with the corresponding indices of July 2023, the greatest percentage increase was recorded in tobacco products division, while the highest percentage decrease was recorded in mining of coal and lignite – extraction of crude petroleum and natural gas – mining support service activities divisions (Tables 1 and 4).



Information on methodological issues:

Business Statistics Division
Manufacture-Construction Indices and Industrial Products Section
Head of the Section: Diamantaki Aikaterini
Tel: +30 213 135 2056
E-mail: a.diamantaki@statistics.gr

Information on data provision:

Tel: +30 213 135 2023, 2308, 2310
E-mail: data.dissem@statistics.gr

Evolution of the Industrial Production Index in July 2024

I. Annual changes: July 2024 / July 2023 (Table 1)

The 10.6% increase of the working day adjusted Overall IPI in July 2024, compared with the corresponding index in July 2023, is due to the annual changes of the sub-indices in the following industrial sections:

Increase of:

- 14.5% in the Electricity Supply Index.
- 10.2% in the Manufacturing Index. The increase was mainly the result of the annual changes of the sub-indices in the following 2-digit divisions: tobacco products, repair and installation of machinery and equipment, electrical equipment, printing and reproduction of recorded products, computers, electronics and optical products.
- 3.4% in the Water Supply Index.

Decrease of:

- 1.9% in the Mining and Quarrying Index. The decrease was the result of the annual changes of the sub-indices in the following 2-digit divisions: mining of coal and lignite – extraction of crude petroleum and natural gas – mining support service activities, other mining and quarrying.

II. Rates of change of the average index of the period January - July 2024 compared with the corresponding index of the period January - July 2023 (Table 2)

The 7.2% increase of the working day adjusted average Overall IPI in the 7-month period January - July 2024, compared with the corresponding index in January - July 2023, is due to the corresponding rates of change of the sub-indices in the following industrial sections:

Increase of:

- 16.8% in the Electricity Supply Index.
- 5.4% in the Manufacturing Index.
- 4.7% in the Water Supply Index.
- 0.6% in the Mining and Quarrying Index

III. Monthly changes: July 2024 / June 2024 (Table 4)

The 1.7% increase of the seasonally adjusted Overall IPI in July 2024, compared with the corresponding index in June 2024 is due to the monthly changes of the sub-indices in the following industrial sections:

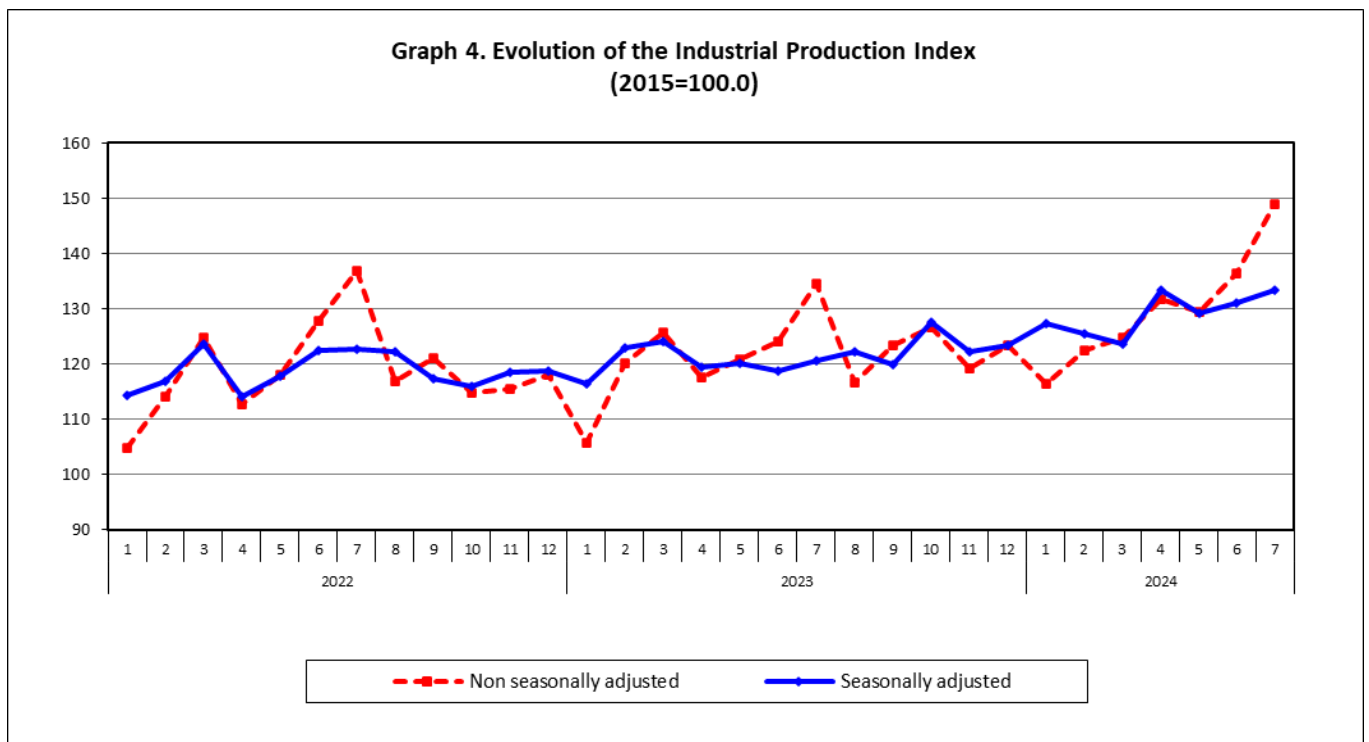
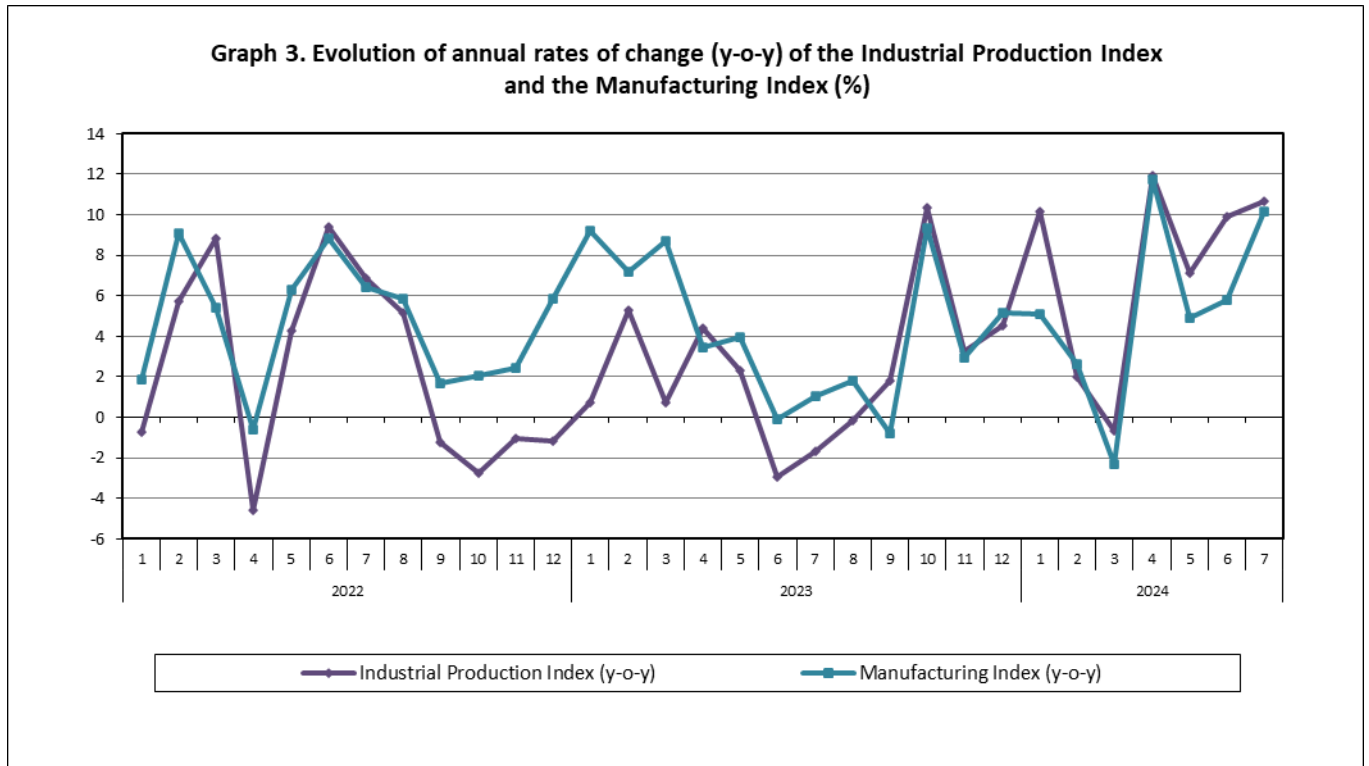
Increase of:

- 7.8% in the Mining and Quarrying Index.
- 3.4% in the Manufacturing Index.

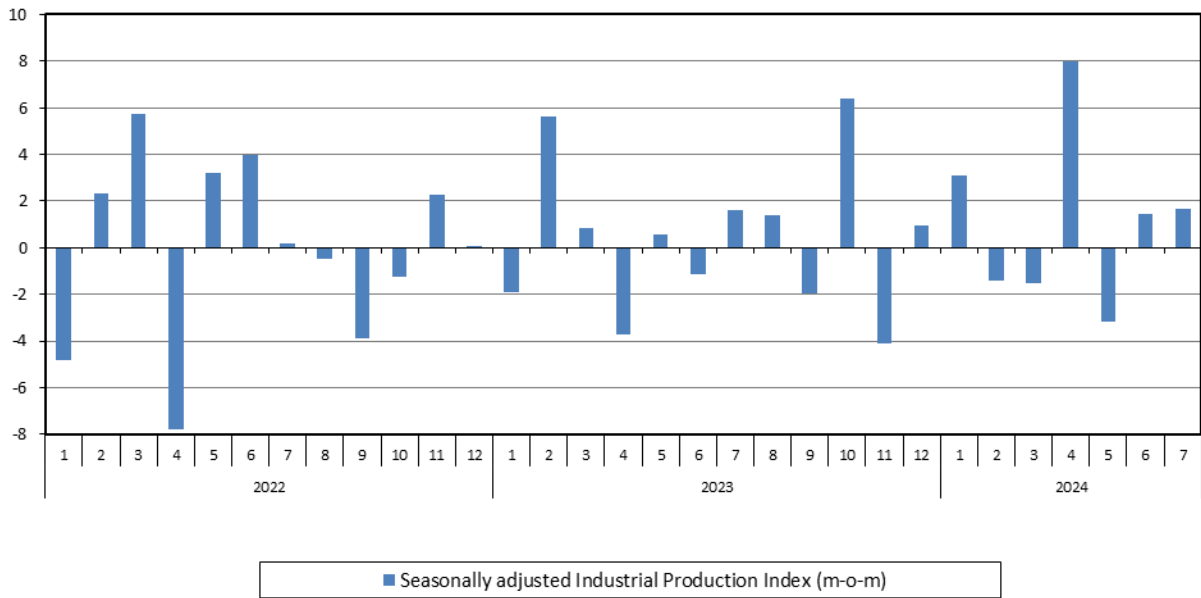
Decrease of:

- 1.8% in the Water Supply Index.
- 4.7% in the Electricity Supply Index.

The following graphs depict the annual rates of change (y-o-y) of the Industrial Production Index and the Manufacturing Index, the evolution of the seasonally and non-seasonally adjusted Overall Industrial Production Index, as well as the monthly rates of change (m-o-m) of the seasonally adjusted index.



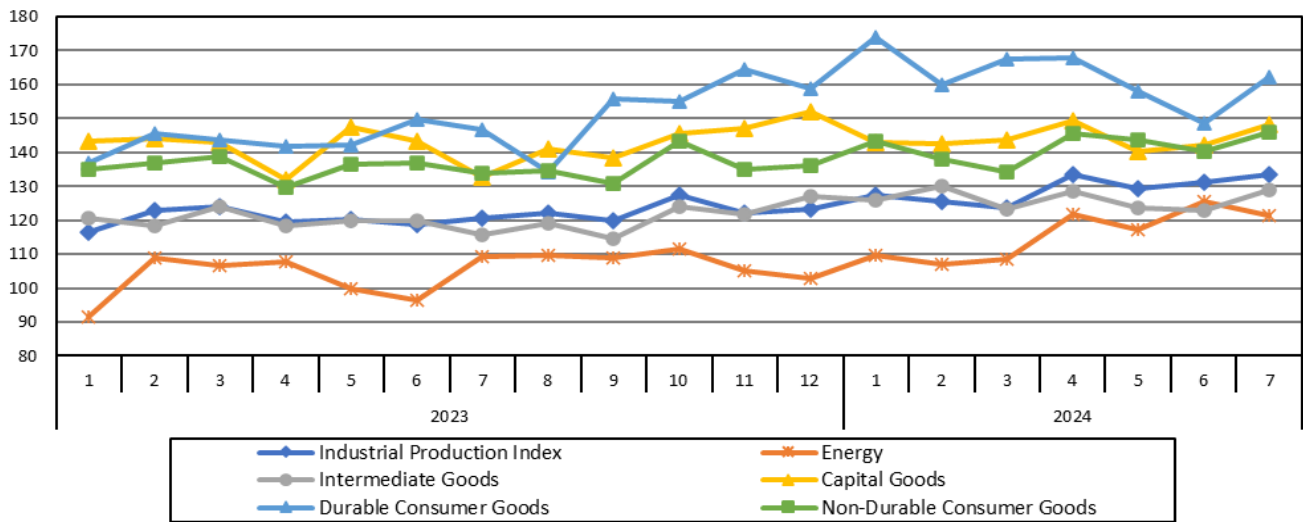
Graph 5. Evolution of the monthly rates of change (m-o-m) of the seasonally adjusted Industrial Production Index (%)



It should be noted that the time series with the seasonally adjusted indices is recalculated every time a new observation is added in the time series. Therefore, the seasonally adjusted data differ from the data published in the previous Announcement.

The following graphs depict the evolution of the seasonally adjusted Industrial Production Index and the Main Industrial Groupings, as well as the evolution of the Industrial Production Index and the Industrial Sections Indices.

Graph 6. Evolution of the seasonally adjusted Industrial Production Index and the Main Industrial Groupings Indices, January 2023 - July 2024 (2015=100.0)



**Graph 7. Evolution of the Industrial Production Index and the Industrial Section Indices
(2015=100.0)**

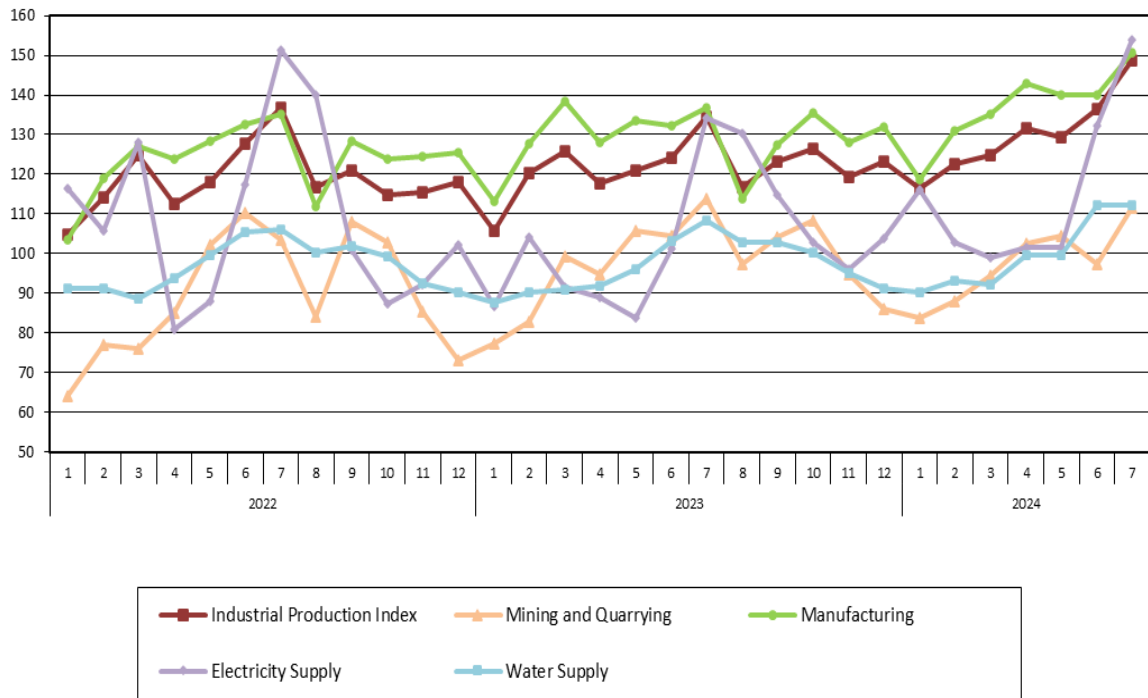


Table 1. Annual rates of change of the Industrial Production Index*(Working day adjusted data, according to the real number of working days)*

Base year: 2015=100.0

Code	Division	July			Rate of change (%)	
		2024*	2023*	2022	2024/2023	2023/2022
OVERALL INDEX		148.89	134.56	136.86	10.6	-1.7
B	MINING AND QUARRYING	111.63	113.77	103.35	-1.9	10.1
05-06-09	Mining of coal and lignite – Extraction of crude petroleum and natural gas – Mining support service activities	15.05	25.37	18.99	-40.7	33.6
07	Mining of metal ores	143.86	122.67	127.00	17.3	-3.4
08	Other mining and quarrying	114.74	123.70	107.61	-7.2	14.9
C	MANUFACTURING	150.54	136.65	135.25	10.2	1.0
10	Food	137.92	119.83	119.55	15.1	0.2
11	Beverages	153.11	140.03	141.01	9.3	-0.7
12	Tobacco products	190.61	136.50	129.99	39.6	5.0
13	Textiles	117.69	107.68	113.79	9.3	-5.4
14	Wearing apparel	67.58	74.95	94.98	-9.8	-21.1
15	Leather and related products	108.24	100.93	104.29	7.2	-3.2
16	Wood and products of wood and cork, except furniture	107.03	117.94	123.09	-9.2	-4.2
17	Paper and paper products	119.92	117.59	117.34	2.0	0.2
18	Printing and reproduction of recorded products	135.13	111.62	156.30	21.1	-28.6
19	Coke and refined petroleum products	120.25	112.75	111.31	6.7	1.3
20	Chemicals and chemical products	153.60	131.77	131.63	16.6	0.1
21	Basic pharmaceutical products and pharmaceutical preparations	346.15	360.95	268.81	-4.1	34.3
22	Rubber and plastic products	142.28	127.50	133.75	11.6	-4.7
23	Other non-metallic mineral products	150.20	132.56	129.99	13.3	2.0
24	Basic metals	139.71	121.54	128.44	14.9	-5.4
25	Fabricated metal products, except machinery and equipment	159.60	142.90	157.53	11.7	-9.3
26	Computers, electronic and optical products	264.50	223.23	261.01	18.5	-14.5
27	Electrical equipment	160.30	130.99	148.98	22.4	-12.1
28	Machinery and equipment n. e. c.	140.06	135.90	143.73	3.1	-5.4
29	Motor vehicles, trailers and semi-trailers	139.60	145.89	157.68	-4.3	-7.5
30	Other transport equipment	97.31	116.65	96.39	-16.6	21.0
31	Furniture	181.82	165.80	163.76	9.7	1.2
32	Other manufacturing	159.27	156.92	153.67	1.5	2.1
33	Repair and installation of machinery and equipment	122.53	92.11	101.61	33.0	-9.4
D	ELECTRICITY SUPPLY	153.79	134.26	151.47	14.5	-11.4
35	Electricity supply	153.79	134.26	151.47	14.5	-11.4
E	WATER SUPPLY	112.13	108.45	105.94	3.4	2.4
36	Water collection, treatment and supply	112.13	108.45	105.94	3.4	2.4
MAIN INDUSTRIAL GROUPINGS						
1	Energy	138.66	124.62	133.89	11.3	-6.9
2	Intermediate goods	138.09	123.78	127.61	11.6	-3.0
3	Capital goods	155.52	139.64	151.46	11.4	-7.8
4	Consumer Durables	180.37	163.51	149.70	10.3	9.2
5	Consumer Non-Durables	166.28	152.11	143.13	9.3	6.3

* Provisional data

Note: The indices are rounded up to two decimal digits when published and percentage changes up to one decimal digit when published.

Table 2. Average indices of the period January – July and rates of change of the Industrial Production Index
(Working day adjusted data, according to the real number of working days)

Base year: 2015=100.0

Code	Division	Average indices of the period Jan.-July			Rate of change (%)	
		2024*	2023*	2022	2024/2023	2023/2022
OVERALL INDEX		130.02	121.24	119.89	7.2	1.1
B	MINING AND QUARRYING	97.45	96.85	88.38	0.6	9.6
05-06-09	Mining of coal and lignite – Extraction of crude petroleum and natural gas – Mining support service activities	17.37	24.95	20.13	-30.4	23.9
07	Mining of metal ores	121.96	124.50	121.07	-2.0	2.8
08	Other mining and quarrying	100.79	97.90	87.17	3.0	12.3
C	MANUFACTURING	136.94	129.97	124.26	5.4	4.6
10	Food	121.36	114.03	109.15	6.4	4.5
11	Beverages	115.28	108.51	109.74	6.2	-1.1
12	Tobacco products	166.90	148.52	124.58	12.4	19.2
13	Textiles	113.09	115.43	116.64	-2.0	-1.0
14	Wearing apparel	65.71	75.07	81.50	-12.5	-7.9
15	Leather and related products	97.82	104.45	83.87	-6.3	24.5
16	Wood and products of wood and cork, except furniture	106.70	112.73	112.37	-5.4	0.3
17	Paper and paper products	117.21	115.86	120.93	1.2	-4.2
18	Printing and reproduction of recorded products	139.60	129.70	141.93	7.6	-8.6
19	Coke and refined petroleum products	116.95	108.43	103.48	7.9	4.8
20	Chemicals and chemical products	147.66	130.29	129.67	13.3	0.5
21	Basic pharmaceutical products and pharmaceutical preparations	298.36	295.24	235.70	1.1	25.3
22	Rubber and plastic products	131.40	129.73	133.69	1.3	-3.0
23	Other non-metallic mineral products	145.01	129.95	124.68	11.6	4.2
24	Basic metals	135.84	133.02	133.01	2.1	0.0
25	Fabricated metal products, except machinery and equipment	145.07	138.81	139.01	4.5	-0.1
26	Computers, electronic and optical products	254.73	236.39	211.27	7.8	11.9
27	Electrical equipment	149.32	139.26	145.61	7.2	-4.4
28	Machinery and equipment n. e. c.	129.51	129.86	126.62	-0.3	2.6
29	Motor vehicles, trailers and semi-trailers	142.35	162.38	149.79	-12.3	8.4
30	Other transport equipment	72.89	70.72	71.32	3.1	-0.8
31	Furniture	156.35	160.01	149.77	-2.3	6.8
32	Other manufacturing	133.75	135.33	128.84	-1.2	5.0
33	Repair and installation of machinery and equipment	104.90	93.41	93.60	12.3	-0.2
D	ELECTRICITY SUPPLY	115.27	98.67	112.59	16.8	-12.4
35	Electricity supply	115.27	98.67	112.59	16.8	-12.4
E	WATER SUPPLY	99.95	95.50	96.58	4.7	-1.1
36	Water collection, treatment and supply	99.95	95.50	96.58	4.7	-1.1
MAIN INDUSTRIAL GROUPINGS						
1	Energy	114.03	101.29	107.89	12.6	-6.1
2	Intermediate goods	129.86	123.01	123.54	5.6	-0.4
3	Capital goods	139.31	136.32	129.51	2.2	5.3
4	Consumer Durables	162.00	144.15	133.57	12.4	7.9
5	Consumer Non-Durables	145.39	138.84	128.32	4.7	8.2

* Provisional data

Note: The indices are rounded up to two decimal digits when published and percentage changes up to one decimal digit when published.

Table 3. Monthly rate of change of the Industrial Production Index
(Working day adjusted data, according to the real number of working days)

		Base year: 2015=100.0		
Code	Division	July 2024*	June 2024**	Rate of change (%) July 2024/June 2024
OVERALL INDEX		148.89	136.35	9.2
B	MINING AND QUARRYING	111.63	97.31	14.7
05-06-09	Mining of coal and lignite – Extraction of crude petroleum and natural gas – Mining support service activities	15.05	17.08	-11.9
07	Mining of metal ores	143.86	86.10	67.1
08	Other mining and quarrying	114.74	112.96	1.6
C	MANUFACTURING	150.54	140.06	7.5
10	Food	137.92	121.27	13.7
11	Beverages	153.11	142.02	7.8
12	Tobacco products	190.61	188.65	1.0
13	Textiles	117.69	112.76	4.4
14	Wearing apparel	67.58	53.97	25.2
15	Leather and related products	108.24	115.31	-6.1
16	Wood and products of wood and cork, except furniture	107.03	98.48	8.7
17	Paper and paper products	119.92	115.03	4.3
18	Printing and reproduction of recorded products	135.13	141.21	-4.3
19	Coke and refined petroleum products	120.25	119.63	0.5
20	Chemicals and chemical products	153.60	157.66	-2.6
21	Basic pharmaceutical products and pharmaceutical preparations	346.15	279.92	23.7
22	Rubber and plastic products	142.28	133.72	6.4
23	Other non-metallic mineral products	150.20	149.14	0.7
24	Basic metals	139.71	134.54	3.8
25	Fabricated metal products, except machinery and equipment	159.60	153.73	3.8
26	Computers, electronic and optical products	264.50	220.83	19.8
27	Electrical equipment	160.30	152.20	5.3
28	Machinery and equipment n. e. c.	140.06	135.66	3.2
29	Motor vehicles, trailers and semi-trailers	139.60	180.66	-22.7
30	Other transport equipment	97.31	81.59	19.3
31	Furniture	181.82	160.53	13.3
32	Other manufacturing	159.27	152.47	4.5
33	Repair and installation of machinery and equipment	122.53	125.88	-2.7
D	ELECTRICITY SUPPLY	153.79	132.31	16.2
35	Electricity supply	153.79	132.31	16.2
E	WATER SUPPLY	112.13	112.37	-0.2
36	Water collection, treatment and supply	112.13	112.37	-0.2
MAIN INDUSTRIAL GROUPINGS				
1	Energy	138.66	125.99	10.0
2	Intermediate goods	138.09	132.73	4.0
3	Capital goods	155.52	149.02	4.4
4	Consumer Durables	180.37	166.83	8.1
5	Consumer Non-Durables	166.28	146.80	13.3

* Provisional data **Revised data

Note: The indices are rounded up to two decimal digits when published and percentage changes up to one decimal digit when published.

Table 4. Monthly rate of change of the seasonally adjusted Industrial Production Index

Base year: 2015=100.0

Code	Division	July 2024	June 2024	Rate of change (%) July 2024 / June 2024
OVERALL INDEX		133.34	131.13	1.7
B	MINING AND QUARRYING	95.92	88.98	7.8
05-06-09	Mining of coal and lignite – Extraction of crude petroleum and natural gas – Mining support service activities	-	-	-
07	Mining of metal ores	134.89	83.23	62.1
08	Other mining and quarrying	94.18	97.58	-3.5
C	MANUFACTURING	138.36	133.77	3.4
10	Food	127.60	122.27	4.4
11	Beverages	110.00	108.23	1.6
12	Tobacco products	178.85	174.78	2.3
13	Textiles	110.42	107.18	3.0
14	Wearing apparel	62.45	61.83	1.0
15	Leather and related products	96.55	107.80	-10.4
16	Wood and products of wood and cork, except furniture	99.62	93.79	6.2
17	Paper and paper products	114.55	117.17	-2.2
18	Printing and reproduction of recorded products	138.46	133.09	4.0
19	Coke and refined petroleum products	121.15	125.09	-3.2
20	Chemicals and chemical products	143.66	145.51	-1.3
21	Basic pharmaceutical products and pharmaceutical preparations	282.10	273.16	3.3
22	Rubber and plastic products	131.83	124.44	5.9
23	Other non-metallic mineral products	140.72	136.29	3.3
24	Basic metals	138.49	128.95	7.4
25	Fabricated metal products, except machinery and equipment	140.58	133.68	5.2
26	Computers, electronic and optical products	266.73	230.76	15.6
27	Electrical equipment	157.97	144.24	9.5
28	Machinery and equipment n. e. c.	129.09	123.92	4.2
29	Motor vehicles, trailers and semi-trailers	140.00	163.99	-14.6
30	Other transport equipment	70.60	72.90	-3.2
31	Furniture	158.00	137.68	14.8
32	Other manufacturing	139.47	137.17	1.7
33	Repair and installation of machinery and equipment	124.25	120.89	2.8
D	ELECTRICITY SUPPLY	124.87	131.08	-4.7
35	Electricity supply	124.87	131.08	-4.7
E	WATER SUPPLY	101.13	102.95	-1.8
36	Water collection, treatment and supply	101.13	102.95	-1.8
MAIN INDUSTRIAL GROUPINGS				
1	Energy	121.35	125.56	-3.3
2	Intermediate goods	128.98	122.89	5.0
3	Capital goods	148.19	142.35	4.1
4	Consumer Durables	162.28	148.79	9.1
5	Consumer Non-Durables	145.82	140.41	3.9

Notes:

1. The indices are rounded up to two decimal digits when published and percentage changes up to one decimal digit when published.
2. The whole time-series with seasonally adjusted indices is recalculated every time a new observation is added in the time-series.
3. The composed index of divisions 05-06-09 is not seasonally adjusted.

Table 5. Evolution of the Overall Industrial Production Index
(Working day adjusted data, according to the real number of working days)

Base year: 2015=100.0

Year and month	Overall Index	Monthly rate of change (%)	Annual rate of change (%)	12-month average index (moving average)	Rate of change of the 12-month average index (%)
2022: 1	104.88	-12.1	-0.7	115.94	9.7
2	114.17	8.9	5.8	116.46	9.9
3	124.73	9.2	8.8	117.30	10.1
4	112.63	-9.7	-4.6	116.85	7.9
5	118.11	4.9	4.3	117.25	7.1
6	127.84	8.2	9.4	118.17	7.1
7	136.86	7.1	6.9	118.90	7.0
8	116.79	-14.7	5.1	119.38	6.6
9	121.10	3.7	-1.2	119.25	5.6
10	114.71	-5.3	-2.8	118.98	4.0
11	115.41	0.6	-1.0	118.88	3.3
12	117.96	2.2	-1.2	118.77	2.4
Annual average	118.77				
2023*: 1	105.63	-10.5	0.7	118.83	2.5
2	120.18	13.8	5.3	119.33	2.5
3	125.66	4.6	0.7	119.41	1.8
4	117.60	-6.4	4.4	119.82	2.5
5	120.86	2.8	2.3	120.05	2.4
6	124.05	2.6	-3.0	119.73	1.3
7	134.56	8.5	-1.7	119.54	0.5
8	116.61	-13.3	-0.2	119.53	0.1
9	123.27	5.7	1.8	119.71	0.4
10	126.57	2.7	10.3	120.70	1.4
11	119.19	-5.8	3.3	121.01	1.8
12	123.30	3.4	4.5	121.46	2.3
Annual average	121.46				
2024*: 1	116.36	-5.6	10.2	122.35	3.0
2	122.55	5.3	2.0	122.55	2.7
3	124.86	1.9	-0.6	122.48	2.6
4	131.66	5.4	12.0	123.65	3.2
5	129.48	-1.7	7.1	124.37	3.6
6	136.35	5.3	9.9	125.40	4.7
7	148.89	9.2	10.6	126.59	5.9

* Provisional data

Note: The indices are rounded up to two decimal digits when published and percentage changes up to one decimal digit when published.

Table 6. Monthly evolution of the seasonally adjusted Overall Industrial Production Index and Main Industrial Groupings

Base year: 2015=100.0

Year and month	Overall Index		Energy		Intermediate goods		Capital goods		Consumer durables		Consumer non-durables	
	Index	Monthly rate of change (%)	Index	Monthly rate of change (%)	Index	Monthly rate of change (%)	Index	Monthly rate of change (%)	Index	Monthly rate of change (%)	Index	Monthly rate of change (%)
2022:												
1	114.28	-4.8	106.59	-6.2	118.72	-3.9	118.72	-7.9	118.83	0.4	118.70	-3.5
2	116.97	2.4	102.81	-3.6	122.74	3.4	129.93	9.4	125.75	5.8	125.73	5.9
3	123.67	5.7	121.28	18.0	119.35	-2.8	129.79	-0.1	137.56	9.4	127.60	1.5
4	114.07	-7.8	99.42	-18.0	118.20	-1.0	129.70	-0.1	134.94	-1.9	123.39	-3.3
5	117.76	3.2	104.71	5.3	120.17	1.7	136.24	5.0	133.71	-0.9	125.98	2.1
6	122.43	4.0	112.89	7.8	121.81	1.4	140.16	2.9	139.47	4.3	128.91	2.3
7	122.67	0.2	117.67	4.2	119.13	-2.2	141.84	1.2	132.82	-4.8	125.89	-2.3
8	122.09	-0.5	115.43	-1.9	120.99	1.6	136.25	-3.9	152.77	15.0	125.71	-0.1
9	117.38	-3.9	98.57	-14.6	121.30	0.3	141.67	4.0	137.51	-10.0	129.63	3.1
10	115.89	-1.3	99.19	0.6	116.52	-3.9	137.90	-2.7	148.55	8.0	128.13	-1.2
11	118.55	2.3	101.36	2.2	117.75	1.1	136.16	-1.3	143.36	-3.5	134.04	4.6
12	118.67	0.1	101.26	-0.1	120.40	2.3	134.43	-1.3	153.17	6.8	132.44	-1.2
Annual average	118.70		106.77		119.76		134.40		138.20		127.18	
2023:												
1	116.41	-1.9	91.70	-9.4	120.59	0.2	143.39	6.7	136.82	-10.7	134.86	1.8
2	122.99	5.7	108.88	18.7	118.25	-1.9	144.07	0.5	145.61	6.4	136.99	1.6
3	124.01	0.8	106.72	-2.0	124.13	5.0	142.95	-0.8	143.63	-1.4	138.82	1.3
4	119.41	-3.7	107.95	1.1	118.27	-4.7	132.09	-7.6	141.69	-1.4	129.67	-6.6
5	120.11	0.6	99.97	-7.4	119.78	1.3	147.35	11.6	142.34	0.5	136.39	5.2
6	118.73	-1.2	96.38	-3.6	119.69	-0.1	143.33	-2.7	149.65	5.1	136.92	0.4
7	120.63	1.6	109.21	13.3	115.66	-3.4	132.85	-7.3	146.80	-1.9	133.73	-2.3
8	122.30	1.4	109.63	0.4	118.95	2.8	140.96	6.1	134.38	-8.5	134.68	0.7
9	119.89	-2.0	108.82	-0.7	114.43	-3.8	138.38	-1.8	155.68	15.8	130.81	-2.9
10	127.53	6.4	111.71	2.7	123.99	8.4	145.41	5.1	155.23	-0.3	143.28	9.5
11	122.31	-4.1	105.01	-6.0	121.92	-1.7	147.10	1.2	164.39	5.9	134.85	-5.9
12	123.46	0.9	102.87	-2.0	127.11	4.3	152.00	3.3	158.98	-3.3	136.19	1.0
Annual average	121.48		104.90		120.23		142.49		147.93		135.60	
2024:												
1	127.28	3.1	109.54	6.5	125.80	-1.0	142.86	-6.0	173.82	9.3	143.40	5.3
2	125.48	-1.4	107.11	-2.2	129.98	3.3	142.43	-0.3	160.05	-7.9	137.97	-3.8
3	123.60	-1.5	108.70	1.5	123.22	-5.2	143.68	0.9	167.58	4.7	134.39	-2.6
4	133.45	8.0	121.65	11.9	128.62	4.4	149.35	4.0	167.85	0.2	145.51	8.3
5	129.25	-3.1	117.29	-3.6	123.57	-3.9	140.14	-6.2	158.18	-5.8	143.77	-1.2
6	131.13	1.5	125.56	7.1	122.89	-0.6	142.35	1.6	148.79	-5.9	140.41	-2.3
7	133.34	1.7	121.35	-3.3	128.98	5.0	148.19	4.1	162.28	9.1	145.82	3.9

- Notes:
1. The indices are rounded up to two decimal digits when published and percentage changes up to one decimal digit when published.
 2. The whole time-series with seasonally adjusted indices is recalculated every time a new observation is added in the time-series.

METHODOLOGICAL NOTES

Generally	The Industrial Production Index (IPI) in Greece has been compiled by the Hellenic Statistical Authority (ELSTAT) from 1959 onwards.
Purpose of the index	The objective of the index is to compare the magnitude (volume) of the output in the current month in the mining and quarrying, manufacturing, electricity and water supply divisions with the corresponding output of a given fixed period, which is considered as base period. The Industrial Production Index shows the evolution of the value added of the production factors cost, at constant prices.
Legal framework	The compilation of the IPI is based on the framework of the implementation of Council Regulation (EC) No 1165/1998 concerning short-term statistics (STS-R). Furthermore, the IPI is governed by Regulation (EC) No 1893/2006 of the European Parliament and of the Council, by Commission Regulation (EC) No 656/2007, by Council Regulation (EC) No 451/2008, by Regulation (EU) No 2019/2152 of the European Parliament and of the Council on European business statistics, as well as Commission Implementing Regulation (EU) No 2020/1197 laying down technical specifications and arrangements pursuant to Regulation (EU) No 2019/2152.
Reference period	Month.
Base year	2015=100.0.
Revision	The IPI is a fixed base index. The Industrial Production Index was currently revised with new base year 2015 (2015=100.0) according to the provisions of Council Regulation No 1165/1998 concerning short-term statistics. Short-term indices are revised every five (5) years, particularly in calendar years ending in 0 or 5.
Statistical classifications	At the level of branches of economic activities, the statistical classification of economic activities NACE Rev.2 of EU was used (Regulation No 1893/2006), while at the level of main industrial groupings, the allocation of two-digit and three-digit NACE Rev. 2 headings to categories of aggregate classification was used, in accordance with Council Regulation No 656/2007. At product level, the statistical classification CPA 2008 of EU was used, according to Council Regulation No 451/2008.
Geographical coverage	The index covers the whole Country.
Coverage of economic activities	The index covers all the sections of industry, the main industrial groups, as well as all levels of economic activity.
Statistical survey	The data are collected from a sample of 1,263 enterprises. The survey covers 325 products and the measurement of the surveyed products is made in terms of output quantities or in terms of production value or turnover, according to the specific features in each branch of economic activity.
Seasonal adjustment	Seasonal adjustment is the procedure followed to remove the impact of seasonality on the time-series (i.e. the impact of monthly effects, e.g. holidays, tourist period etc.), in order to improve comparability over time. The method applied is TRAMO-SEATS with the use of JDemetra+ 2.0.0. For the seasonal adjustment of the Industrial Production Index at 2-digit level of NACE Rev.2, at section level (B – Mining and Quarrying, C – Manufacturing, D – Electricity and E – Water Supply) and for the Main Industrial Groupings (MIGs), the direct approach is applied, namely each time-series is seasonally adjusted independently. For the overall Industrial Production Index, the indirect approach is applied, with the seasonally adjusted IPI being computed by aggregating the seasonally adjusted MIGs using appropriate weights.
Publication of data	The revised IPI with the new base year 2015 (2015=100.0) is released since July 2019, with May 2019 as the first reference month. Data with base year 2015=100.0 are available from January 2000 onwards.
References	More information about the methodology concerning the compilation and calculation of the index and the time series are available on the website of the Hellenic Statistical Authority (ELSTAT) (http://www.statistics.gr/en/statistics/-/publication/DKT21/-).