



HELLENIC REPUBLIC
HELLENIC STATISTICAL AUTHORITY

Piraeus, 22 January 2021

PRESS RELEASE

EVOLUTION OF TURNOVER OF ENTERPRISES IN RETAIL TRADE NOVEMBER 2020

The Hellenic Statistical Authority (ELSTAT) with this sectoral publication, presents in detail the evolution of the sales/turnover of all classes of activity for the retail trade section. Retail trade is the basic business model of the modern consumer supply chain, through the resale of material goods or services and the promotion of products for profit.

Therefore, retail trade has always been an important productive tertiary sector of the Greek economy with a significant contribution to the Gross Domestic Product.

At the same time, and during the recent circumstances, the monitoring of the evolution of the size of the retail trade activity classes is important, given the direct and indirect effects due to the 2019 coronavirus disease pandemic (COVID-19).

In addition, monitoring the aggregates of the retail trade, leads to conclusions on the evolution of consumption (in terms of volume, characteristics, preferences and substitution of products) of the Greek society, the citizens and the enterprises of the country.

This current publication is part of a sequel of the Press Releases published by ELSTAT ([link DT](#)) since April 2020, incorporating the most recent data on turnover from Administrative Sources **for November 2020**.

A corresponding publication has been scheduled and is released by ELSTAT on a monthly basis, throughout the whole period during which the regular monitoring of the turnover of the retail trade enterprises remains relevant and warranted.

In particular, ELSTAT announces data a) on a quarterly basis, on turnover for **all enterprises** classified in the activity classes of the retail trade divisions (divisions 45 and 47 of the NACE Rev.2 classification) for the 2nd and 3rd quarter 2019 and 2020, b) data on a monthly basis, on turnover for **all enterprises obliged to double-entry accounting bookkeeping** classified in the activity classes of the retail trade divisions (divisions 45 and 47 of the NACE Rev.2 classification) for the periods October - November 2019 and 2020 and c) data on turnover for the **five biggest enterprises**, for each of the 10 largest classes, in terms of 2018 turnover, of the retail trade divisions (divisions 45 and 47 of NACE Rev.2 classification), for the 2nd and 3rd quarter 2019 and 2020 and for the periods October - November 2019 and 2020.

Information on methodological issues:

Business Statistics Division
Registers and Big Enterprises Section
Head of Section: Adamantia Georgostathi
Tel.: +30 213 135 2043
e-mail: a.georgostathi@statistics.gr

Information on data provision:

Tel.: +30 213 135 2022, 2308, 2310
E-mail: data.dissem@statistics.gr

a. Total of enterprises classified in the activity classes of the retail trade divisions (Table 1)

For the total of enterprises in retail trade, the turnover in the third quarter 2020 amounted to 12.86 billion euro, recording a decrease of 5.6% in comparison with the third quarter 2019, when the respective turnover was 13.62 billion euro and an increase of 19.8% in comparison with the second quarter 2020, when the respective turnover was 10.73 billion euro.

The activities that recorded the biggest increase in turnover in the **third quarter of 2020** compared with the corresponding quarter of 2019 are:

- Other retail sale in non-specialized stores, increase 41.7%.
- Sale of other motor vehicles, increase 27.1%.

The activities that recorded the biggest decrease in turnover in the **third quarter of 2020** compared with the corresponding quarter of 2019 are:

- Retail sale of watches and jewelry in specialized stores, decrease 40.4%.
- Retail sale of cosmetic and toilet articles in specialized stores, decrease 38.5%.

Presentation of activities with biggest rates of change

The class of economic activity “**Other retail sale in non-specialized stores**” which recorded the biggest increase in turnover in the third quarter of 2020 compared with the corresponding quarter of 2019, includes the retail sale of a large variety of goods, of which food products, beverages or tobacco are not predominant, activities of department stores carrying a general line of merchandise, including wearing apparel, furniture, appliances, hardware, cosmetics, jewellery, toys, sports good, etc.

The class of economic activity “**Retail sale of watches and jewelry in specialized stores**” which recorded the biggest decrease in turnover in the third quarter of 2020 compared with the corresponding quarter of 2019, includes the retail stores which mainly sell watches and jewels.

The main characteristics of the enterprises of these economic classes, according to the Statistical Business Register, with reference year 2017, are the following:

ECONOMIC ACTIVITY	Number of			
	Enterprises	Branches	Enterprises able to conduct electronic transactions ^(*)	Persons employed
Other retail sale in non-specialized stores	7,761	9,289	49	15,376
Retail sale of watches and jewellery in specialized stores	3,912	5,274	113	7,427

() The number of enterprises able to conduct electronic transactions refers to the year 2019 and is derived from administrative transactions files.*

b. All enterprises classified in the activity classes of the retail trade divisions obliged to double-entry accounting bookkeeping (Table 2)

For the enterprises in retail trade divisions obliged to double-entry accounting bookkeeping, for which data are available on a monthly basis, the turnover in November 2020 amounted to 2.3 billion euro, recording a decrease of 12.4% in comparison with November 2019, when the respective turnover was 2.65 billion euro and a decrease of 11.0% in comparison with October 2020, when the respective turnover was 2.6 billion euro.

The activities that recorded the biggest increase in turnover in **November 2020** compared with November 2019 are:

- Sale of other motor vehicles, increase 47.4%.
- Retail sale via mail order houses or via Internet, increase 39.1%.

The activities that recorded the biggest decrease in turnover in **November 2020** compared with October 2020 are:

- Retail sale of music and video recordings in specialized stores, decrease 91.0%.
- Retail sale of second-hand goods in stores, decrease 73.9%.

Presentation of activities with biggest rates of change

The class of economic activity “**Sale of other motor vehicles**” which recorded the biggest increase in turnover in November 2020 compared with November 2019 includes the wholesale and retail sale of new and used vehicles, such as lorries, trailers and semi-trailers, as well as caravans and motor homes. This class also includes wholesale and retail sale of off-road motor vehicles.

The class of economic activity “**Retail sale of music and video recordings in specialized stores**” includes the retail sale of musical records, audio tapes, compact discs and cassettes, video tapes and DVDs, as well as the retail sale of blank tapes and discs.

The main characteristics of the enterprises that belong to these economic classes, with turnover data in November 2020 according to the Statistical Business Register, with reference year 2017, are the following:

ECONOMIC ACTIVITY	Number of			
	Enterprises	Branches	Enterprises able to conduct electronic transactions (*)	Persons employed
Sale of other motor vehicles	100	158	1	470
Retail sale of music and video recordings in specialized stores	14	26	-	52

(*) The number of enterprises able to conduct electronic transactions refers to the year 2019 and is derived from administrative transactions files.

c. 5 biggest enterprises for the 10 largest classes of the retail trade divisions (based on the 2018 turnover) (Tables 3, 4)

Based on the turnover data of the provisional Statistical Business Register 2018, the 10 largest classes of economic activity in the retail trade divisions are:

- Sale of cars and light motor vehicles
- Maintenance and repair of motor vehicles
- Wholesale trade of motor vehicle parts and accessories
- Retail sale in non-specialized stores with food, beverages or tobacco predominating
- Other retail sale in non-specialized stores
- Retail sale of automotive fuel in specialized stores
- Retail sale of hardware, paints and glass in specialized stores
- Retail sale of electrical household appliances in specialized stores
- Retail sale of clothing in specialized stores and
- Dispensing chemist in specialized stores

The activities that recorded the biggest increase in turnover in the **third quarter of 2020** compared with the corresponding quarter of 2019 are:

- Dispensing chemist in specialized stores, increase 11.4%.
- Retail sale of hardware, paints and glass in specialized stores, increase 9.8%.

The activities that recorded the biggest decrease in turnover in the **third quarter of 2020** compared with the corresponding quarter of 2019 are:

- Retail sale of clothing in specialized stores, decrease 26.1%.
- Retail sale of automotive fuel in specialized stores, decrease 14.7%.

The activities that recorded the biggest increase in turnover in **November 2020** compared with November 2019 are:

- Dispensing chemist in specialized stores, increase 32.2%
- Retail sale in non-specialized stores with food, beverages or tobacco predominating, increase 7.6%

The activities that recorded the biggest decrease in turnover in **November 2020** compared with November 2019 are:

- Retail sale of clothing in specialized stores, decrease 70.4%
- Other retail sale in non-specialized stores, decrease 62.9%

Table 1: Turnover for the total of enterprises in all classes of the retail trade divisions (divisions 45 and 47 of NACE Rev.2 classification)

ECONOMIC ACTIVITY		TURNOVER (in thousand €)				Annual Rate of Change (%) 2020/2019		Quarterly Rate of Change (%) 3 rd Quarter / 2 nd Quarter	
Code NACE Rev.2	Description	2nd Quarter 2019	3rd Quarter 2019	2nd Quarter 2020	3rd Quarter 2020	2nd Quarter	3rd Quarter	2019	2020
4511	Sale of cars and light motor vehicles	1,359,745	1,149,411	795,551	1,120,772	-41.5	-2.5	-15.5	40.9
4519	Sale of other motor vehicles	90,253	69,376	58,546	88,188	-35.1	27.1	-23.1	50.6
4520	Maintenance and repair of motor vehicles	291,459	284,960	217,672	282,279	-25.3	-0.9	-2.2	29.7
4531	Wholesale trade of motor vehicle parts and accessories	353,153	365,140	287,876	374,845	-18.5	2.7	3.4	30.2
4532	Retail trade of motor vehicle parts and accessories	97,853	105,050	77,807	101,697	-20.5	-3.2	7.4	30.7
4540	Sale, maintenance and repair of motorcycles and related parts and accessories	142,241	134,162	113,359	133,495	-20.3	-0.5	-5.7	17.8
4711	Retail sale in non-specialized stores with food, beverages or tobacco predominating	3,539,695	3,905,556	3,675,853	3,737,884	3.8	-4.3	10.3	1.7
4719	Other retail sale in non-specialized stores	557,319	623,259	443,548	883,326	-20.4	41.7	11.8	99.2
4721	Retail sale of fruit and vegetables in specialized stores	94,543	105,967	96,649	93,726	2.2	-11.6	12.1	-3.0
4722	Retail sale of meat and meat products in specialized stores	250,045	265,674	243,616	250,288	-2.6	-5.8	6.3	2.7
4723	Retail sale of fish, crustaceans and molluscs in specialized stores	46,259	52,879	39,933	46,218	-13.7	-12.6	14.3	15.7
4724	Retail sale of bread, cakes, flour confectionery and sugar confectionery in specialized stores	138,860	158,274	99,376	134,711	-28.4	-14.9	14.0	35.6
4725	Retail sale of beverages in specialized stores	37,200	45,826	25,730	37,926	-30.8	-17.2	23.2	47.4
4726	Retail sale of tobacco products in specialized stores	48,412	54,727	41,225	49,573	-14.8	-9.4	13.0	20.2
4729	Other retail sale of food in specialized stores	107,183	107,742	96,784	99,167	-9.7	-8.0	0.5	2.5
4730	Retail sale of automotive fuel in specialized stores	1,735,316	1,741,721	1,169,940	1,384,255	-32.6	-20.5	0.4	18.3
4741	Retail sale of computers, peripheral units and software in specialized stores	140,484	164,125	146,331	201,926	4.2	23.0	16.8	38.0
4742	Retail sale of telecommunications equipment in specialized stores	109,877	121,109	110,509	136,446	0.6	12.7	10.2	23.5
4743	Retail sale of audio and video equipment in specialized stores	13,009	13,855	10,701	13,556	-17.7	-2.2	6.5	26.7
4751	Retail sale of textiles in specialized stores	86,481	89,862	68,523	84,382	-20.8	-6.1	3.9	23.1
4752	Retail sale of hardware, paints and glass in specialized stores	321,923	323,887	260,649	332,042	-19.0	2.5	0.6	27.4
4753	Retail sale of carpets, rugs, wall and floor coverings in specialized stores	55,968	66,043	39,600	57,267	-29.2	-13.3	18.0	44.6
4754	Retail sale of electrical household appliances in specialized stores	287,016	322,939	261,229	309,435	-9.0	-4.2	12.5	18.5
4759	Retail sale of furniture, lighting equipment and other household articles in specialized stores	142,164	143,633	100,104	141,261	-29.6	-1.7	1.0	41.1

Table 1: Turnover for the total of enterprises in all classes of the retail trade divisions (divisions 45 and 47 of NACE Rev.2 classification) (continue)

ECONOMIC ACTIVITY		TURNOVER (in thousand €)				Annual Rate of Change (%) 2020/2019		Quarterly Rate of Change (%) 3 rd Quarter / 2 nd Quarter	
Code NACE Rev.2	Description	2nd Quarter 2019	3rd Quarter 2019	2nd Quarter 2020	3rd Quarter 2020	2nd Quarter	3rd Quarter	2019	2020
4761	Retail sale of books in specialized stores	36,452	61,029	28,666	56,036	-21.4	-8.2	67.4	95.5
4762	Retail sale of newspapers and stationery in specialized stores	31,115	42,252	23,462	37,596	-24.6	-11.0	35.8	60.2
4763	Retail sale of music and video recordings in specialized stores	2,032	2,442	1,129	1,692	-44.4	-30.7	20.2	49.9
4764	Retail sale of sporting equipment in specialized stores	128,717	153,790	115,972	146,543	-9.9	-4.7	19.5	26.4
4765	Retail sale of games and toys in specialized stores	206,231	224,246	153,539	220,546	-25.5	-1.6	8.7	43.6
4771	Retail sale of clothing in specialized stores	677,331	716,634	343,104	555,978	-49.3	-22.4	5.8	62.0
4772	Retail sale of footwear and leather goods in specialized stores	127,924	132,982	71,982	101,349	-43.7	-23.8	4.0	40.8
4773	Dispensing chemist in specialized stores	894,975	887,140	893,402	902,904	-0.2	1.8	-0.9	1.1
4774	Retail sale of medical and orthopaedic goods in specialized stores	25,772	22,222	21,857	23,078	-15.2	3.9	-13.8	5.6
4775	Retail sale of cosmetic and toilet articles in specialized stores	248,558	300,420	109,876	184,883	-55.8	-38.5	20.9	68.3
4776	Retail sale of flowers, plants, seeds, fertilisers, pet animals and pet food in specialized stores	140,818	109,673	138,562	109,406	-1.6	-0.2	-22.1	-21.0
4777	Retail sale of watches and jewellery in specialized stores	111,510	138,674	34,291	82,687	-69.2	-40.4	24.4	141.1
4778	Other retail sale of new goods in specialized stores	202,718	248,788	138,030	174,718	-31.9	-29.8	22.7	26.6
4779	Retail sale of second-hand goods in stores	2,393	2,507	1,287	1,933	-46.2	-22.9	4.8	50.2
4781	Retail sale via stalls and markets of food, beverages and tobacco products	28,840	25,517	25,269	22,944	-12.4	-10.1	-11.5	-9.2
4782	Retail sale via stalls and markets of textiles, clothing and footwear	2,059	3,084	1,371	1,983	-33.4	-35.7	49.8	44.6
4789	Retail sale via stalls and markets of other goods	10,633	11,010	7,954	9,069	-25.2	-17.6	3.5	14.0
4791	Retail sale via mail order houses or via Internet	96,889	98,418	113,394	107,854	17.0	9.6	1.6	-4.9
4799	Other retail sale not in stores, stalls or markets	31,338	28,687	29,278	24,798	-6.6	-13.6	-8.5	-15.3
Total		13,052,763	13,624,692	10,733,536	12,860,662	-17.8	-5.6	4.4	19.8

Table 2: Turnover for the total of enterprises obliged to double-entry accounting bookkeeping in all classes of the retail trade divisions (divisions 45 and 47 of NACE Rev.2 classification)

ECONOMIC ACTIVITY		TURNOVER				Annual Rate of Change (%) 2020/2019		Monthly Rate of Change (%) November/October	
Code NACE Rev.2	Description	October 2019	November 2019	October 2020	November 2020	October	November	2019	2020
4511	Sale of cars and light motor vehicles	333,162	356,535	349,771	334,823	5.0	-6.1	7.0	-4.3
4519	Sale of other motor vehicles	18,395	17,704	29,570	26,100	60.8	47.4	-3.8	-11.7
4520	Maintenance and repair of motor vehicles	34,951	33,851	35,530	31,500	1.7	-6.9	-3.1	-11.3
4531	Wholesale trade of motor vehicle parts and accessories	101,991	98,172	100,693	90,706	-1.3	-7.6	-3.7	-9.9
4532	Retail trade of motor vehicle parts and accessories	11,043	10,114	10,591	9,026	-4.1	-10.8	-8.4	-14.8
4540	Sale, maintenance and repair of motorcycles and related parts and accessories	26,645	22,442	26,706	20,253	0.2	-9.8	-15.8	-24.2
4711	Retail sale in non-specialized stores with food, beverages or tobacco predominating	1,010,632	988,267	1,097,063	1,070,272	8.6	8.3	-2.2	-2.4
4719	Other retail sale in non-specialized stores	50,661	56,138	49,295	25,732	-2.7	-54.2	10.8	-47.8
4721	Retail sale of fruit and vegetables in specialized stores	6,867	5,163	6,314	5,556	-8.1	7.6	-24.8	-12.0
4722	Retail sale of meat and meat products in specialized stores	21,053	20,130	22,033	18,716	4.7	-7.0	-4.4	-15.1
4723	Retail sale of fish, crustaceans and molluscs in specialized stores	2,425	2,203	2,445	2,270	0.8	3.0	-9.2	-7.2
4724	Retail sale of bread, cakes, flour confectionery and sugar confectionery in specialized stores	8,005	7,717	7,150	5,438	-10.7	-29.5	-3.6	-23.9
4725	Retail sale of beverages in specialized stores	2,380	2,225	2,544	1,857	6.9	-16.5	-6.5	-27.0
4726	Retail sale of tobacco products in specialized stores	1,240	1,075	1,470	1,198	18.5	11.4	-13.3	-18.5
4729	Other retail sale of food in specialized stores	9,050	9,915	10,233	11,115 ⁽¹⁾	13.1	12.1 ⁽¹⁾	9.6	8.6 ⁽¹⁾
4730	Retail sale of automotive fuel in specialized stores	208,373	194,891	173,326	125,789	-16.8	-35.5	-6.5	-27.4
4741	Retail sale of computers, peripheral units and software in specialized stores	53,229	72,713	68,917	84,537	29.5	16.3	36.6	22.7
4742	Retail sale of telecommunications equipment in specialized stores	25,596	31,228	36,900	33,018	44.2	5.7	22.0	-10.5
4743	Retail sale of audio and video equipment in specialized stores	2,431	3,314	2,524	3,046	3.8	-8.1	36.3	20.7
4751	Retail sale of textiles in specialized stores	3,055	3,295	3,504	2,362	14.7	-28.3	7.9	-32.6
4752	Retail sale of hardware, paints and glass in specialized stores	***	38,322	43,533	29,935	***	-21.9	***	-31.2
4753	Retail sale of carpets, rugs, wall and floor coverings in specialized stores	21,311	23,638	21,941	9,826	3.0	-58.4	10.9	-55.2
4754	Retail sale of electrical household appliances in specialized stores	78,477	119,242	71,034	83,643	-9.5	-29.9	51.9	17.8
4759	Retail sale of furniture, lighting equipment and other household articles in specialized stores	21,722	23,729	23,323	15,815	7.4	-33.4	9.2	-32.2

Table 2: Turnover for the total of enterprises obliged to double-entry accounting bookkeeping in all classes of the retail trade divisions (divisions 45 and 47 of NACE Rev.2 classification) (continue)

ECONOMIC ACTIVITY		TURNOVER				Annual Rate of Change (%) 2020/2019		Monthly Rate of Change (%) November/October	
Code NACE Rev.2	Description	October 2019	November 2019	October 2020	November 2020	October	November	2019	2020
4761	Retail sale of books in specialized stores	5,830	5,569	5,816	4,301	-0.2	-22.8	-4.5	-26.0
4762	Retail sale of newspapers and stationery in specialized stores	2,749	1,324	1,712	1,511 ⁽¹⁾	-37.7	14.1 ⁽¹⁾	-51.8	-11.7 ⁽¹⁾
4763	Retail sale of music and video recordings in specialized stores	94	111	60	10	-36.2	-91.0	18.1	-83.3
4764	Retail sale of sporting equipment in specialized stores	29,765	33,541	31,753	23,020	6.7	-31.4	12.7	-27.5
4765	Retail sale of games and toys in specialized stores	61,947	85,595	64,046	46,474	3.4	-45.7	38.2	-27.4
4771	Retail sale of clothing in specialized stores	152,553	181,504	130,307	61,083	-14.6	-66.3	19.0	-53.1
4772	Retail sale of footwear and leather goods in specialized stores	21,099	25,878	15,191	8,736	-28.0	-66.2	22.7	-42.5
4773	Dispensing chemist in specialized stores	24,942	24,816	28,943	30,868	16.0	24.4	-0.5	6.7
4774	Retail sale of medical and orthopaedic goods in specialized stores	2,395	2,676	2,893	3,007	20.8	12.4	11.7	3.9
4775	Retail sale of cosmetic and toilet articles in specialized stores	86,705	73,027	60,687	30,153	-30.0	-58.7	-15.8	-50.3
4776	Retail sale of flowers, plants, seeds, fertilizers, pet animals and pet food in specialized stores	8,924	8,716	9,803	10,219 ⁽¹⁾	9.8	17.2 ⁽¹⁾	-2.3	4.2 ⁽¹⁾
4777	Retail sale of watches and jewelry in specialized stores	21,327	18,865	13,322	7,180	-37.5	-61.9	-11.5	-46.1
4778	Other retail sale of new goods in specialized stores	12,063	12,254	10,779	6,723	-10.6	-45.1	1.6	-37.6
4779	Retail sale of second-hand goods in stores	205	153	206	40	0.5	-73.9	-25.4	-80.6
4781	Retail sale via stalls and markets of food, beverages and tobacco products	*	*	*	*	*	*	*	*
4782	Retail sale via stalls and markets of textiles, clothing and footwear	*	*	*	*	*	*	*	*
4789	Retail sale via stalls and markets of other goods	-	-	*	*	-	-	*	*
4791	Retail sale via mail order houses or via Internet	26,177	29,104	31,511	40,490	20.4	39.1	11.2	28.5
4799	Other retail sale not in stores, stalls or markets	1,626	2,312	1,470	1,656	-9.6	-28.4	42.2	12.7
Total		2,522,084	2,647,473	2,604,911	2,318,006	3.3	-12.4	5.0	-11.0

(*) Data are not published due to statistical confidentiality reasons and regarding the protection of the identity of the reporting enterprises.

(***) Extraordinary transactions were recorded in the data. Therefore, they are not published as they are not comparable.

(1) It includes the turnover of enterprises that during 2019 submitted data to tax authorities on a quarterly basis, while during 2020 submitted data on a monthly basis.

(-) There are no enterprises with monthly data in the specific economic class.

Note: Enterprises with single-entry accounting bookkeeping are obliged to submit data to tax authorities on a quarterly basis, while enterprises with double-entry accounting bookkeeping are obliged to submit data on a monthly basis. Therefore, for the total of enterprises, data are available only on a quarterly basis.

Table 3: Turnover for the 5 biggest enterprises in the 10 largest classes of retail trade divisions (divisions 45 and 47 of NACE Rev.2 classification)

ECONOMIC ACTIVITY		TURNOVER (in thousand €)				Annual Rate of Change (%) 2020/2019		Quarterly Rate of Change (%) 3rd Quarter / 2nd Quarter	
Code NACE Rev.2	Description	2nd Quarter 2019	3rd Quarter 2019	2nd Quarter 2020	3rd Quarter 2020	2nd Quarter	3rd Quarter	2019	2020
4511	Sale of cars and light motor vehicles	467,161	375,434	254,786	354,213	-45.5	-5.7	-19.6	39.0
4520	Maintenance and repair of motor vehicles	75,864	58,652	43,880	61,634	-42.2	5.1	-22.7	40.5
4531	Wholesale trade of motor vehicle parts and accessories	59,179	60,821	42,491	64,787	-28.2	6.5	2.8	52.5
4711	Retail sale in non-specialized stores with food, beverages or tobacco predominating	2,191,403	2,253,220	2,387,312	2,285,659	8.9	1.4	2.8	-4.3
4719	Other retail sale in non-specialized stores	116,272	127,433	77,590	114,590	-33.3	-10.1	9.6	47.7
4730	Retail sale of automotive fuel in specialized stores	455,583	468,158	281,691	399,251	-38.2	-14.7	2.8	41.7
4752	Retail sale of hardware, paints and glass in specialized stores	55,521	56,530	44,093	62,092	-20.6	9.8	1.8	40.8
4754	Retail sale of electrical household appliances in specialized stores	165,206	193,602	160,009	176,597	-3.1	-8.8	17.2	10.4
4771	Retail sale of clothing in specialized stores	195,314	188,474	86,505	139,324	-55.7	-26.1	-3.5	61.1
4773	Dispensing chemist in specialized stores	14,960	13,615	16,707	15,166	11.7	11.4	-9.0	-9.2

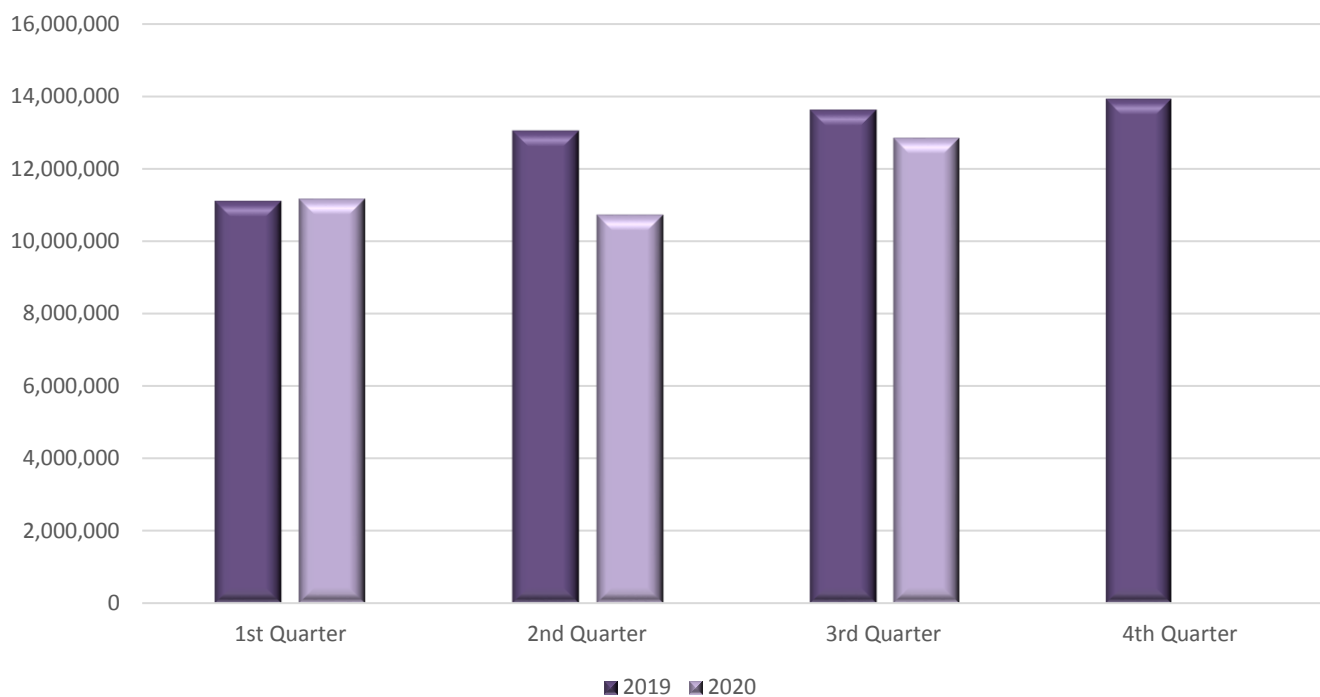
Table 4: Turnover for the 5 biggest enterprises in the 10 largest classes of retail trade divisions (divisions 45 and 47 of NACE Rev.2 classification)

ECONOMIC ACTIVITY		TURNOVER				Annual Rate of Change (%) 2020/2019		Monthly Rate of Change (%) November/October	
Code NACE Rev.2	Description	October 2019	November 2019	October 2020	November 2020	October	November	2019	2020
4511	Sale of cars and light motor vehicles	108,559	119,747	116,355	117,374	7.2	-2.0	10.3	0.9
4520	Maintenance and repair of motor vehicles	20,692	19,755	20,501	17,634	-0.9	-10.7	-4.5	-14.0
4531	Wholesale trade of motor vehicle parts and accessories	23,758	23,821	23,434	21,291	-1.4	-10.6	0.3	-9.1
4711	Retail sale in non-specialized stores with food, beverages or tobacco predominating	747,318	738,677	820,615	795,060	9.8	7.6	-1.2	-3.1
4719	Other retail sale in non-specialized stores	40,707	46,653	40,398	17,314	-0.8	-62.9	14.6	-57.1
4730	Retail sale of automotive fuel in specialized stores	151,051	139,531	127,022	87,866	-15.9	-37.0	-7.6	-30.8
4752	Retail sale of hardware, paints and glass in specialized stores	***	18,326	22,012	10,224	***	-44.2	***	-53.6
4754	Retail sale of electrical household appliances in specialized stores	60,397	96,240	50,288**	61,930**	-16.7	-35.7	59.3	23.2
4771	Retail sale of clothing in specialized stores	68,702	82,859	57,549	24,502	-16.2	-70.4	20.6	-57.4
4773	Dispensing chemist in specialized stores	3,468**	3,460**	3,994**	4,575**	15.2	32.2	-0.2	14.5

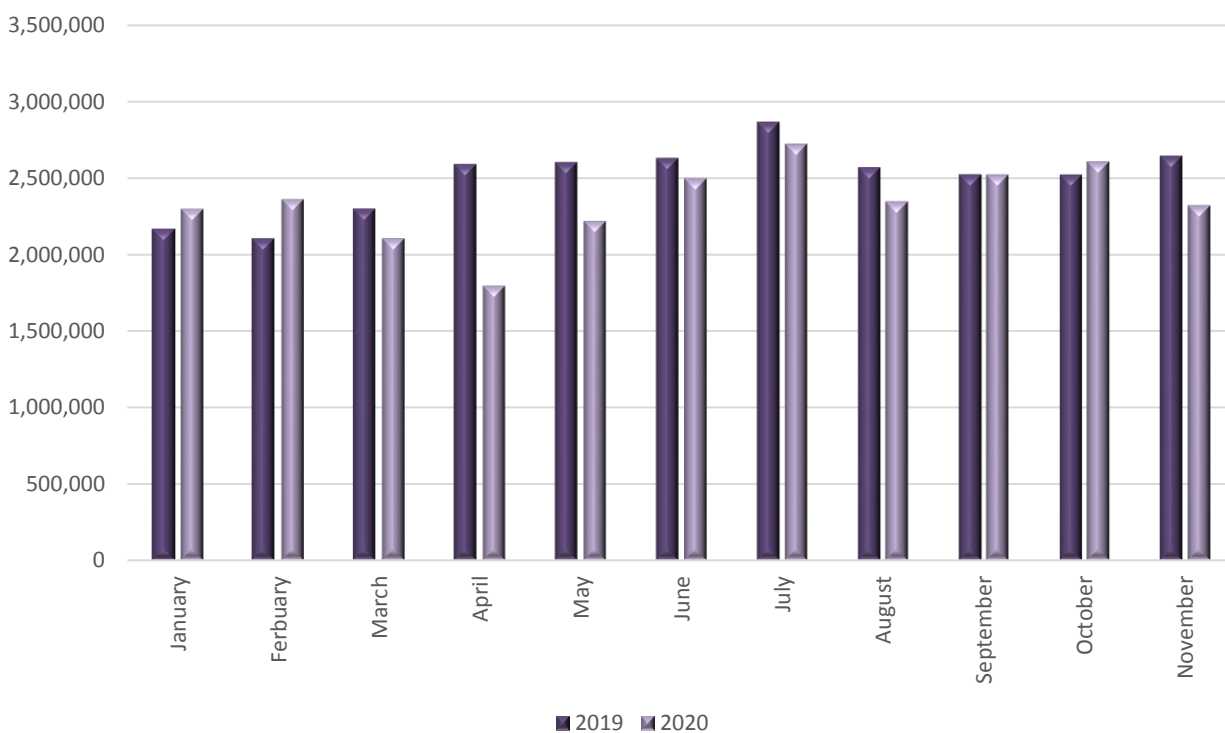
(**) Monthly data are available for less than the 5 biggest enterprises

(***) Extraordinary transactions were recorded in the data. Therefore, they are not published as they are not comparable.

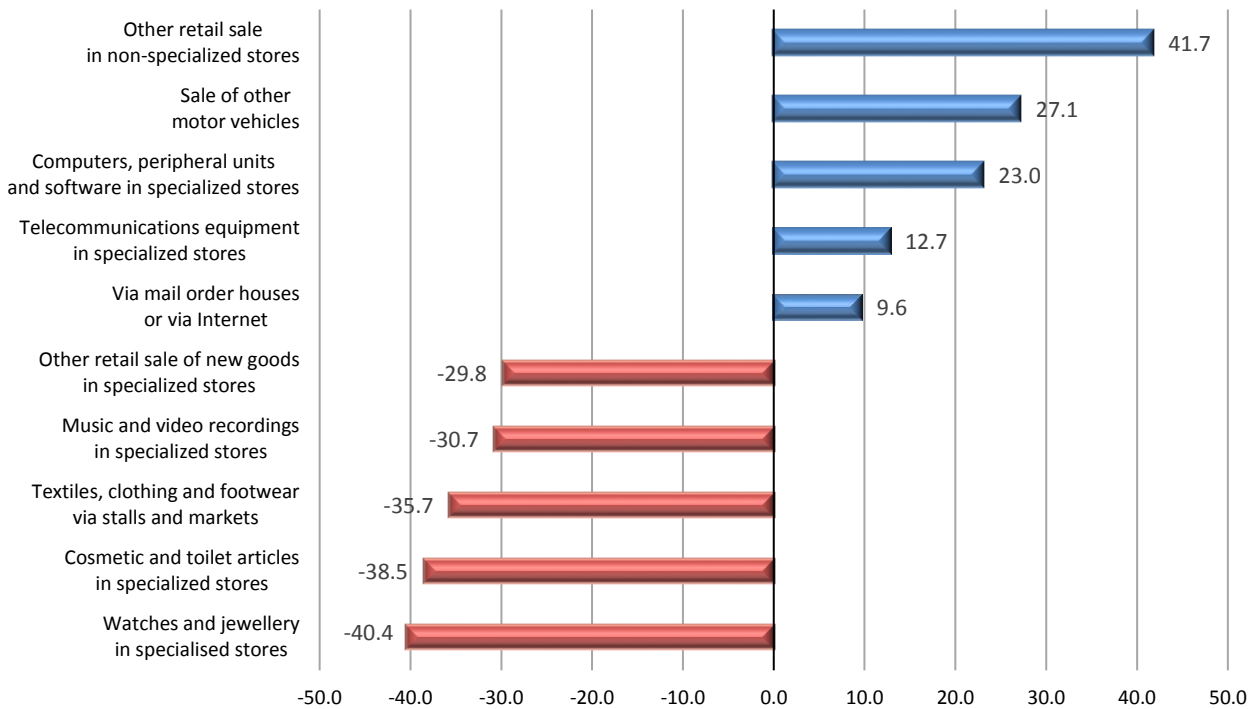
Graph 1: Turnover (in thousand euro) for the total of enterprises in all classes of the retail trade divisions (divisions 45 and 47 of NACE Rev.2 classification)



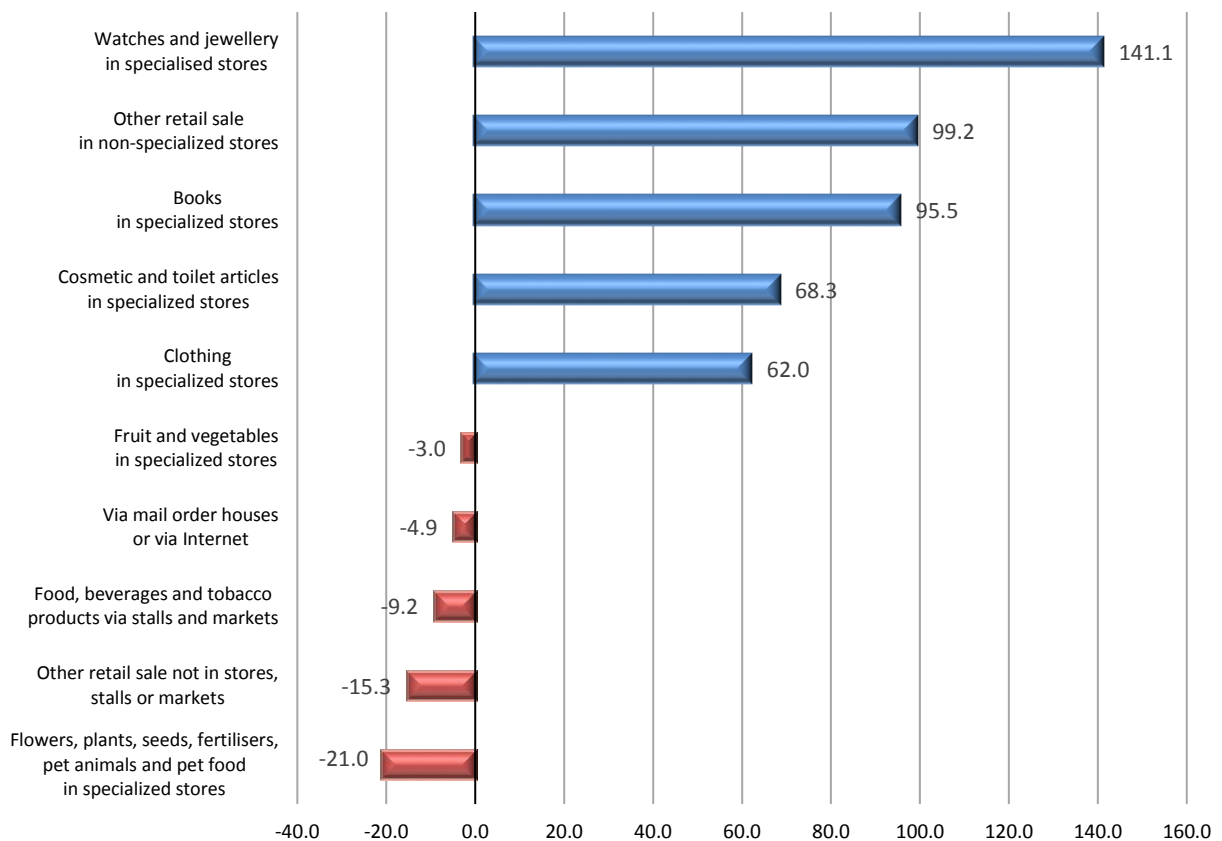
Graph 2: Turnover (in thousand euro) for the total of enterprises obliged to double-entry accounting bookkeeping in all classes of the retail trade divisions (divisions 45 and 47 of NACE Rev.2 classification)



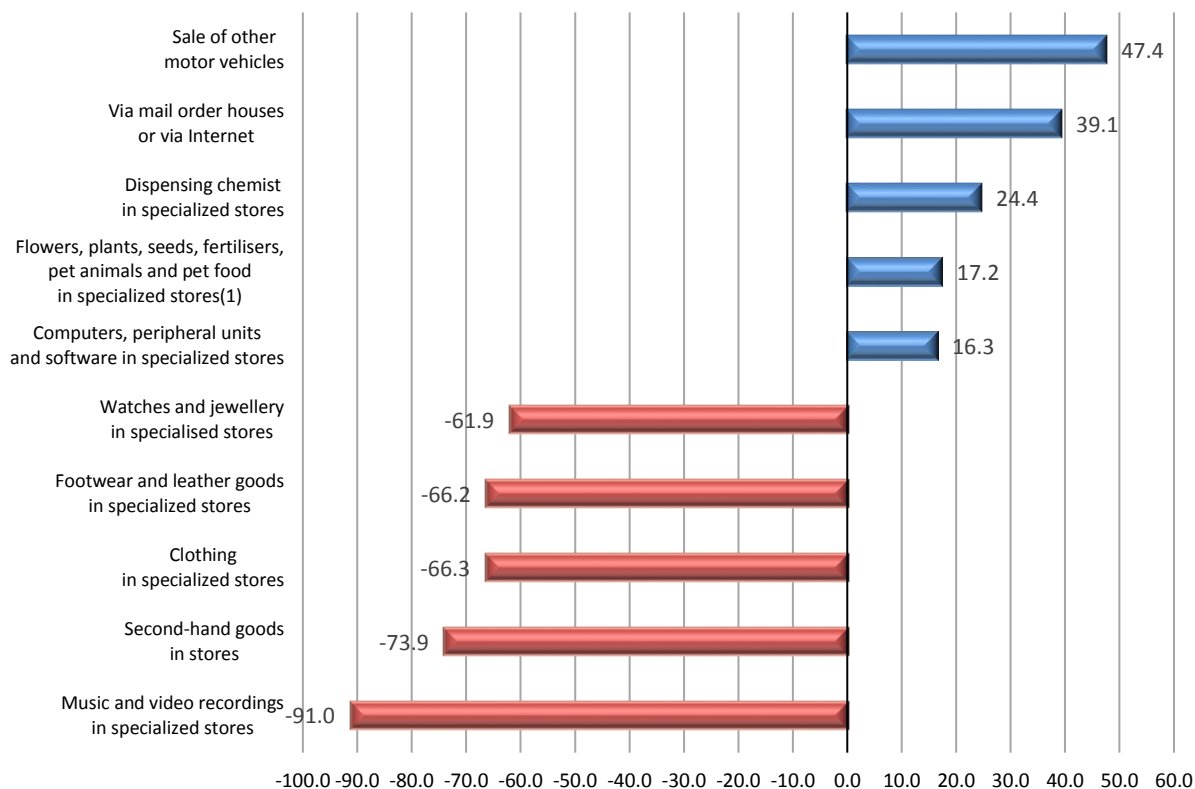
Graph 3. Biggest changes (%) for the total of enterprises classified in the activity classes of the retail trade divisions (divisions 45 and 47 of NACE Rev. 2 classification), **3rd quarter 2020 / 3rd quarter 2019**



Graph 4. Biggest changes (%) for the total of enterprises classified in the activity classes of the retail trade divisions (divisions 45 and 47 of NACE Rev. 2 classification), **3rd quarter 2020 / 2nd quarter 2020**

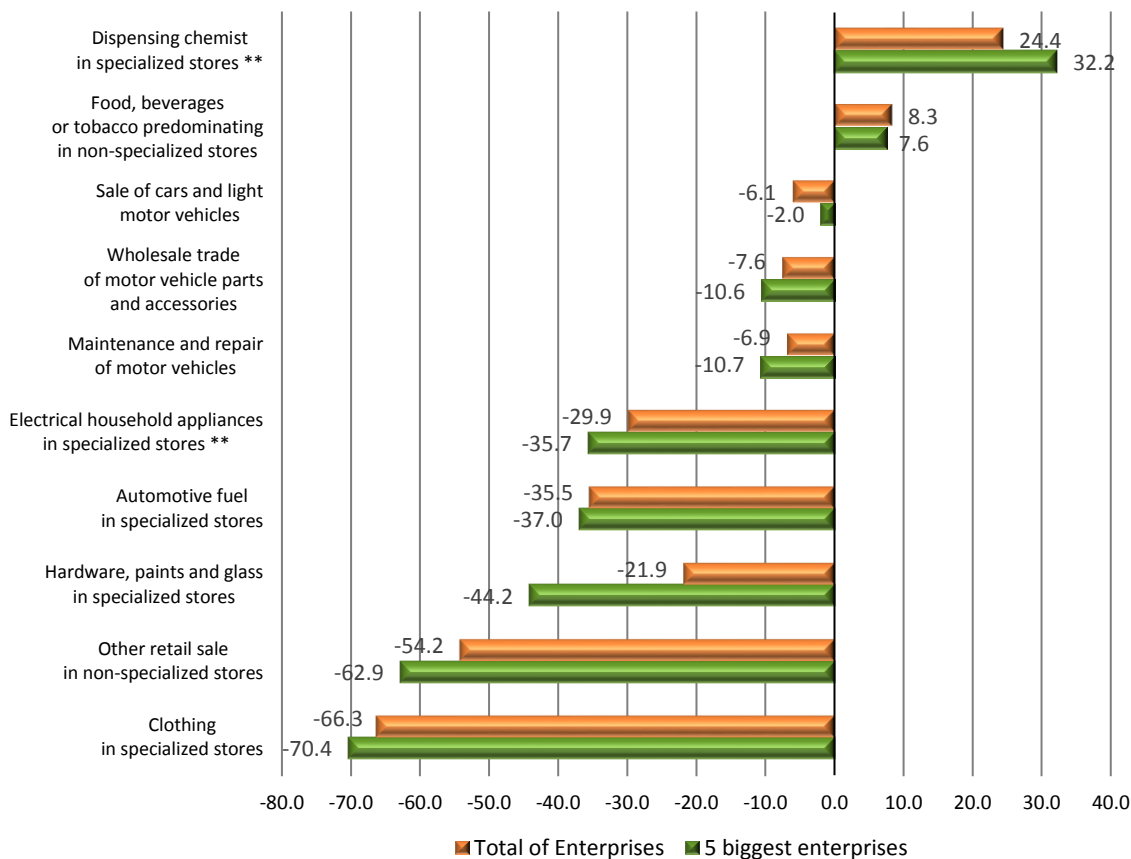


Graph 5: Biggest changes (%) for the total of enterprises obliged to double-entry accounting bookkeeping in all classes of the retail trade divisions (divisions 45 and 47 of NACE Rev.2 classification) November 2020 / November 2019



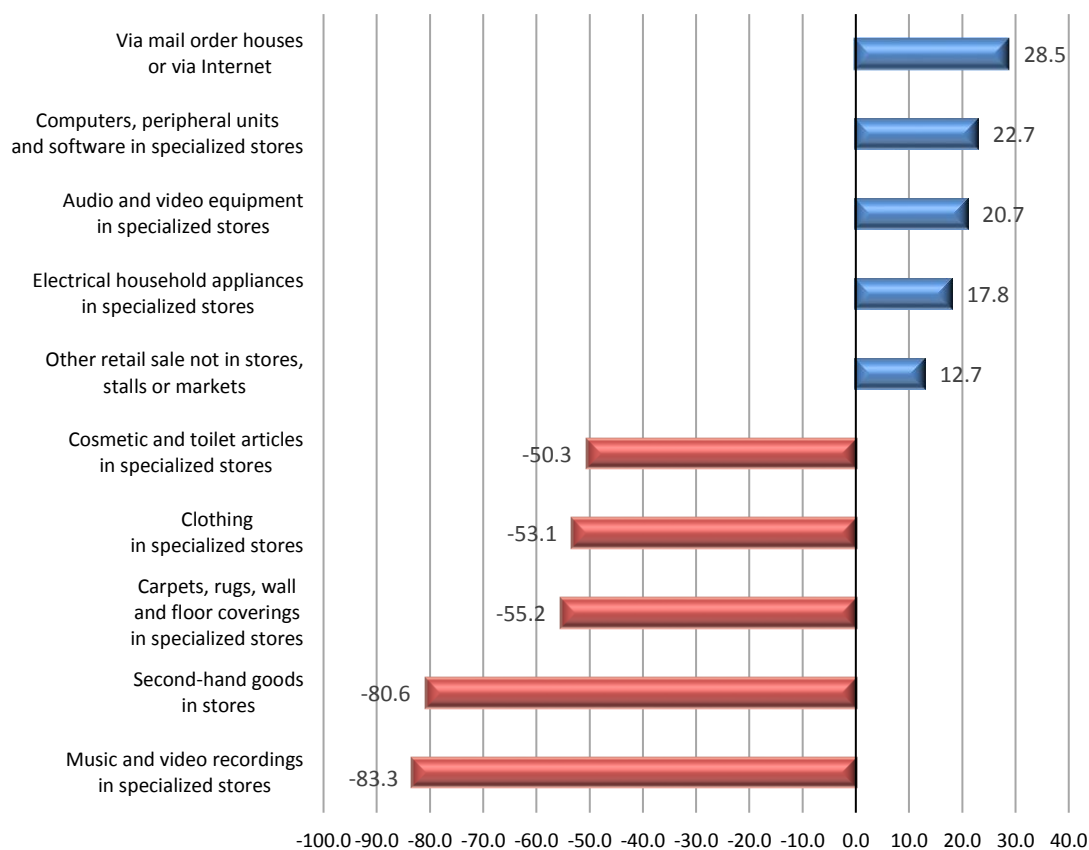
⁽¹⁾ It includes the turnover of enterprises that during 2019 submitted data to tax authorities on a quarterly basis, while during 2020 submitted data on a monthly basis.

Graph 6: Changes (%) for the 5 biggest enterprises in the 10 largest classes of the retail trade divisions (divisions 45 and 47 of NACE Rev.2 classification) and corresponding changes for the total of enterprises of the same classes November 2020 / November 2019

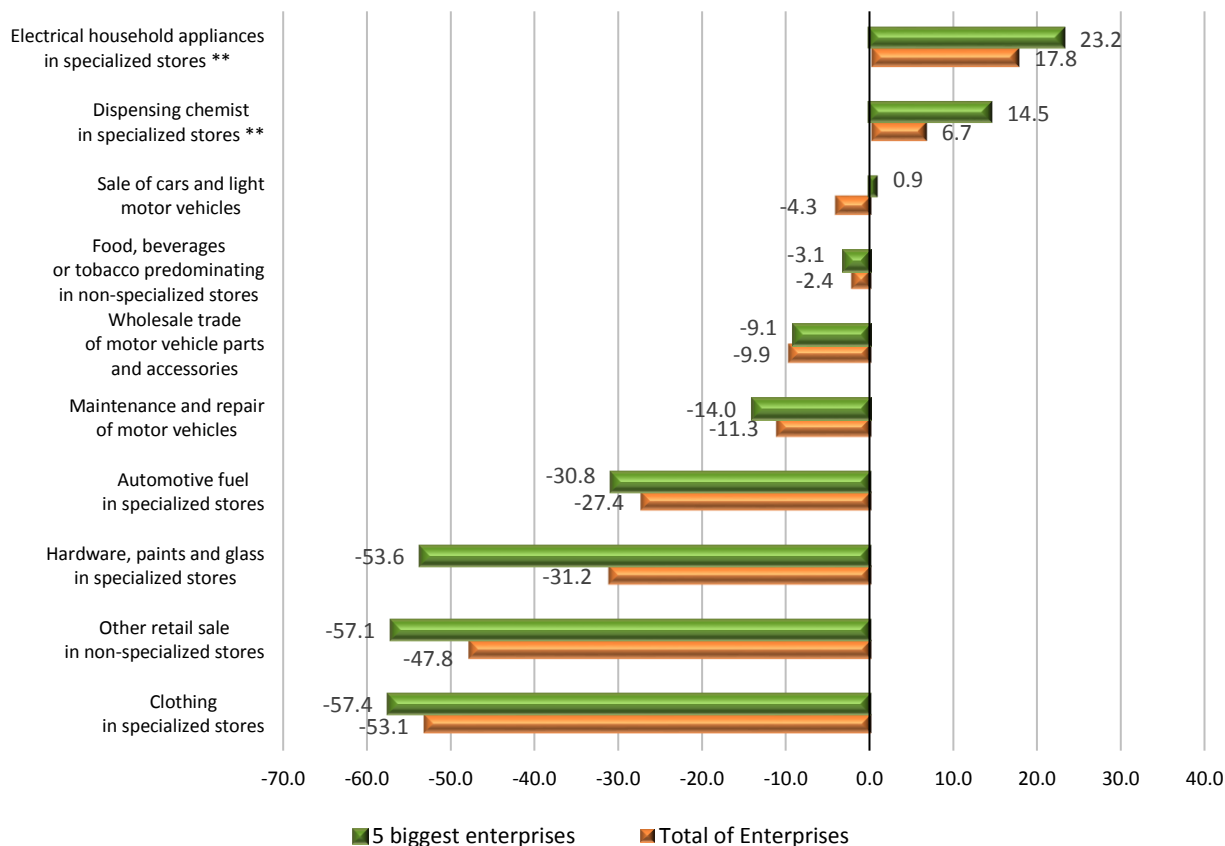


(**) For the activity "Dispensing chemist in specialized stores" monthly data are available for less than the five (5) biggest enterprises. For the activity "Retail sale of electrical household appliances in specialized stores" monthly data for November 2020 are available for less than the five (5) biggest enterprises.

Graph 7: Biggest changes (%) for the total of enterprises obliged to double-entry accounting bookkeeping in all classes of the retail trade divisions (divisions 45 and 47 of NACE Rev.2 classification) November 2020 / October 2020



Graph 8: Changes (%) for the 5 biggest enterprises in the 10 largest classes of the retail trade divisions (divisions 45 and 47 of NACE Rev.2 classification) and corresponding changes for the total of enterprises of the same classes November 2020 / October 2020



(**) For the activity "Dispensing chemist in specialized stores" monthly data are available for less than the five (5) biggest enterprises. For the activity "Retail sale of electrical household appliances in specialized stores" monthly data for October and November 2020 are available for less than the five (5) biggest enterprises.

Generally The statistical data presented in this Press Release have been compiled on the basis of the linking and processing of primary data from the following sources:

- The most recent published Statistical Business Register of ELSTAT, of the reference year 2017 and the corresponding provisional Statistical Business Register of ELSTAT of the reference year 2018.
- Administrative transactions files (tax, etc.) of the reference years 2018, 2019 and 2020.

In particular, the following primary data have been used per source:

- Active enterprises and the economic activity class from the Statistical Business Register of the reference year 2017.
- The 5 largest enterprises in the 10 largest classes of retail trade divisions on the basis of turnover, according to the provisional Statistical Business Register of ELSTAT of the reference year 2018.
- Income data from administrative transaction files of the years 2018, 2019 and 2020.

Statistical classifications For the economic activities, the European statistical classification of economic activities [NACE Rev. 2](#) is used.

Reference Period November 2020.

Statistical unit The statistical unit is the legal unit (distinct VAT numbers).

Comparability The announced statistical data are comparable with the data of the most recent Statistical Business Register of ELSTAT, of the reference year 2017 (relevant link from the webpage of ELSTAT, where tables and information on the methodology applied are provided [Statistical Business Register](#)).

References Analytical tables are available under ELSTAT's website (www.statistics.gr) at the following link: <https://www.statistics.gr/en/statistics/-/publication/SBR04/>