



Piraeus, 30 October 2020



**HELLENIC REPUBLIC
HELLENIC STATISTICAL AUTHORITY**

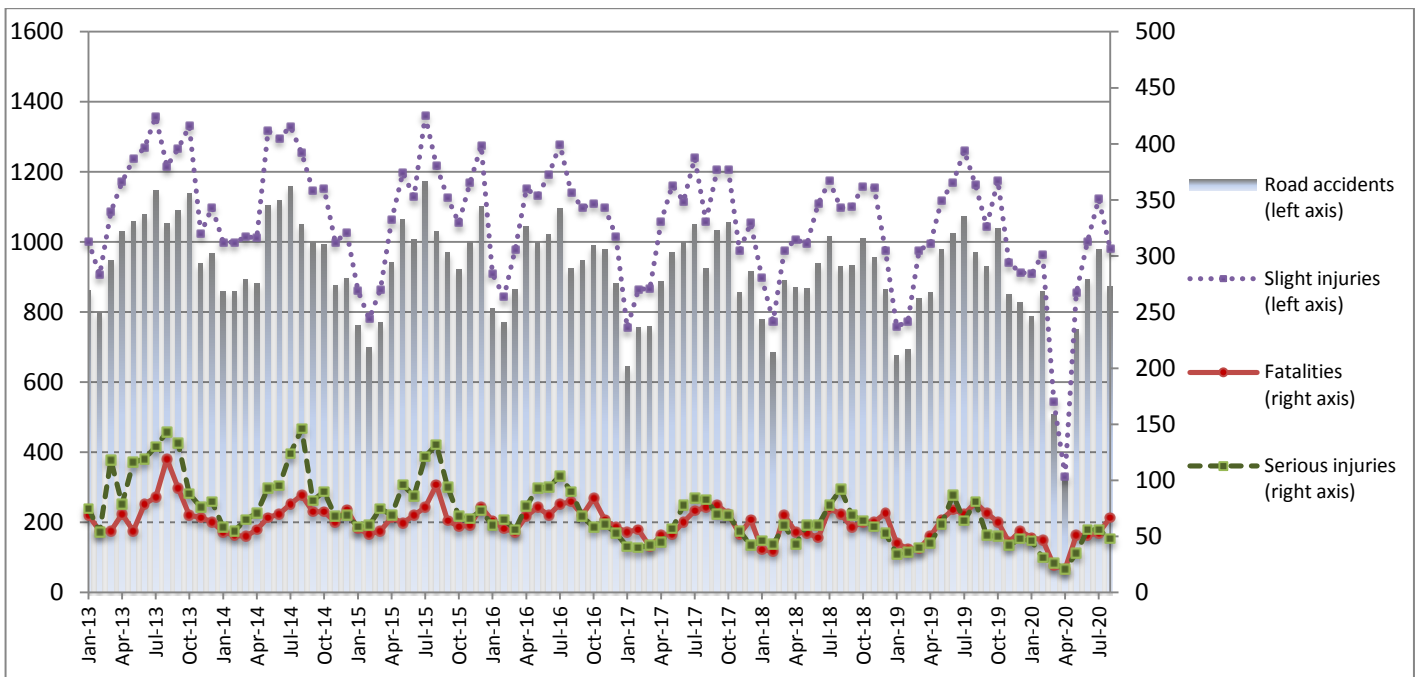
PRESS RELEASE

ROAD TRAFFIC ACCIDENTS: August 2020

The Hellenic Statistical Authority (ELSTAT) announces provisional¹ data on Road Traffic Accidents for August 2020. In particular, the road traffic accidents which occurred in Greece, resulting in death or injury, decreased by 10.0% in comparison with the corresponding month of 2019 (872 road accidents in August 2020, against 969 road accidents in August 2019).

The casualties of the injury-causing accidents that occurred in August 2020 were as follows: 67 deaths, 48 serious injuries and 981 slight injuries. In contrast, in August 2019 the corresponding figures were: 80 deaths, 81 serious injuries and 1,163 slight injuries. Therefore, road traffic accident casualties in August 2020 decreased by 16.3% for deaths, by 40.7% for serious injuries and by 15.6% for slight injuries.

**Graph 1: Road traffic accidents and casualties,
January 2013 - August 2020**



Provisional data for the period September 2019 – August 2020

Information on methodological issues:

Sectoral Statistics Division
Transport Statistics Section
P. Tzortzi, L. Miliara
Tel: +30 213 135 2187, +30 213 135 3095
Fax : +30 213 135 2757
e-mail: p.tzortzi@statistics.gr , l.miliara@statistics.gr

Information for data provision:

Tel: +30 213 135 2022, 2308, 2310
e-mail: data.dissem@statistics.gr

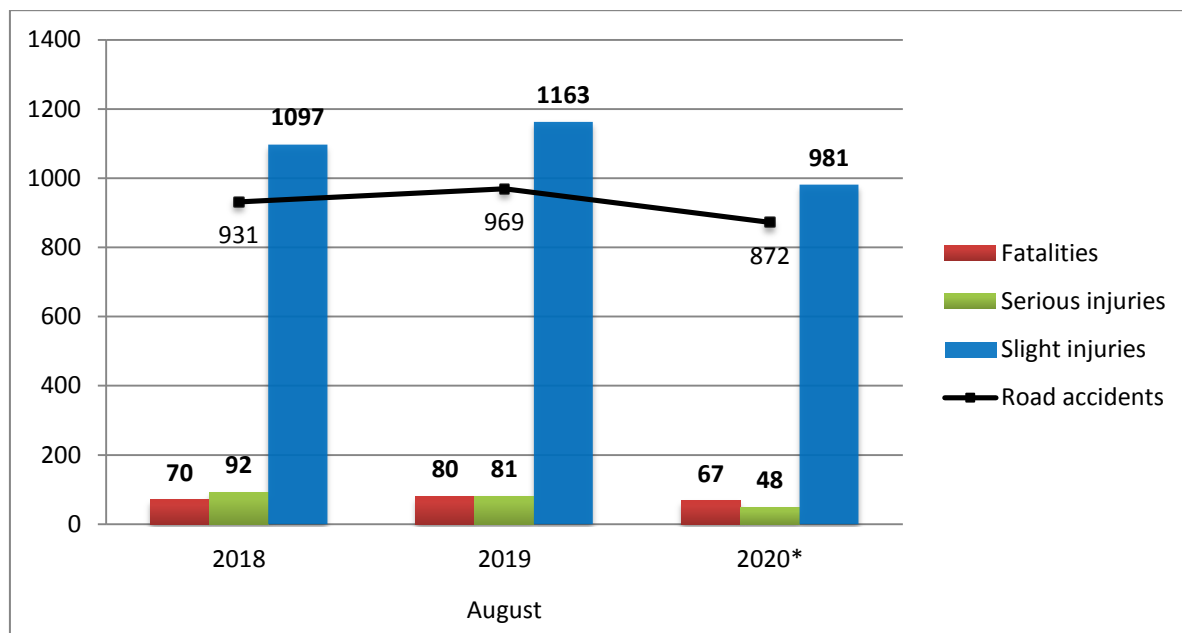
^[1] Data for the reference year is provisional until the finalization of the annual data, which takes place 10 months after the end of the reference year and is published in the corresponding press release of the following year. During these 10 months the provisional data is updated on the basis of the data of the Road Accident Forms of that year which is transmitted to ELSTAT by Police Authorities (see explanatory notes).

Table 1: Road traffic accidents and casualties, August 2018 - 2020*

	August				
	2018	2019	2019/2018 (%)	2020*	2020*/2019 (%)
Road accidents	931	969	4.1	872	-10.0
Fatalities	70	80	14.3	67	-16.3
Total injuries	1,189	1,244	4.6	1,029	-17.3
Serious injuries	92	81	-12.0	48	-40.7
Slight injuries	1,097	1,163	6.0	981	-15.6

* Provisional data

Graph 2: Road traffic accidents and casualties, August 2018 - 2020*



* Provisional data

Table 2: Road traffic accidents and casualties, by region and department, August 2019 and 2020*

Region and department	Road accidents			Fatalities			Serious injuries			Slight injuries		
	2019	2020*	%	2019	2020*	%	2019	2020*	%	2019	2020*	%
Greece Total	969	872	-10.0	80	67	-16.3	81	48	-40.7	1,163	981	-15.6
Anatoliki Makedonia and Thraki (East Macedonia and Thrace)	40	33	-17.5	7	4	-42.9	7	0	-100.0	46	37	-19.6
Drama	6	9	50.0	0	2		0	0		10	10	
Evros	8	4	-50.0	1	0		0	0		9	4	
Kavala	12	10	-16.7	3	1		3	0		11	10	
Xanthi	10	5	-50.0	1	1		0	0		15	6	
Rodopi	4	5	25.0	2	0		4	0		1	7	
Kentriki Makedonia (Central Macedonia)	140	144	2.9	15	12	-20.0	11	4	-63.6	181	179	-1.1
Imathia	3	5	66.7	1	0		0	1		2	6	
Thessaloniki	90	103	14.4	9	6		3	2		109	128	
Kilkis	9	4	-55.6	1	1		1	0		14	3	
Pella	9	6	-33.3	1	2		2	0		10	5	
Pieria	5	2	-60.0	1	1		1	0		4	1	
Serres	7	4	-42.9	1	1		1	0		12	4	
Chalkidiki	17	20	17.6	1	1		3	1		30	32	
Dytiki Makedonia (West Macedonia)	7	1	-85.7	1	0	-100.0	0	0	-	7	1	-85.7
Grevena	1	0	-100.0	0	0		0	0		2	0	
Kastoria	1	0	-100.0	0	0		0	0		1	0	
Kozani	3	1	-66.7	0	0		0	0		3	1	
Florina	2	0	-100.0	1	0		0	0		1	0	
Ipeiros (Epirus)	11	9	-18.2	1	0	-100.0	2	0	-100.0	19	12	-36.8
Arta	1	1	0.0	0	0		0	0		1	1	
Thesprotia	2	3	50.0	0	0		0	0		3	6	
Ioannina	7	3	-57.1	1	0		2	0		13	3	
Preveza	1	2	100.0	0	0		0	0		2	2	
Thessalia (Thessaly)	40	24	-40.0	6	8	33.3	4	4	0.0	48	20	-58.3
Karditsa	10	4	-60.0	1	0		0	2		14	2	
Larissa	11	8	-27.3	3	4		2	1		7	9	
Magnissia	10	8	-20.0	1	2		2	1		12	6	
Trikala	9	4	-55.6	1	2		0	0		15	3	
Ionian Nisia (Ionian Islands)	34	21	-38.2	1	0	-100.0	5	1	-80.0	42	22	-47.6
Zakynthos	7	6	-14.3	0	0		2	0		12	7	
Kerkyra	15	8	-46.7	1	0		2	0		18	8	
Kefallinia	6	0	-100.0	0	0		1	0		5	0	
Lefkada	6	7	16.7	0	0		0	1		7	7	

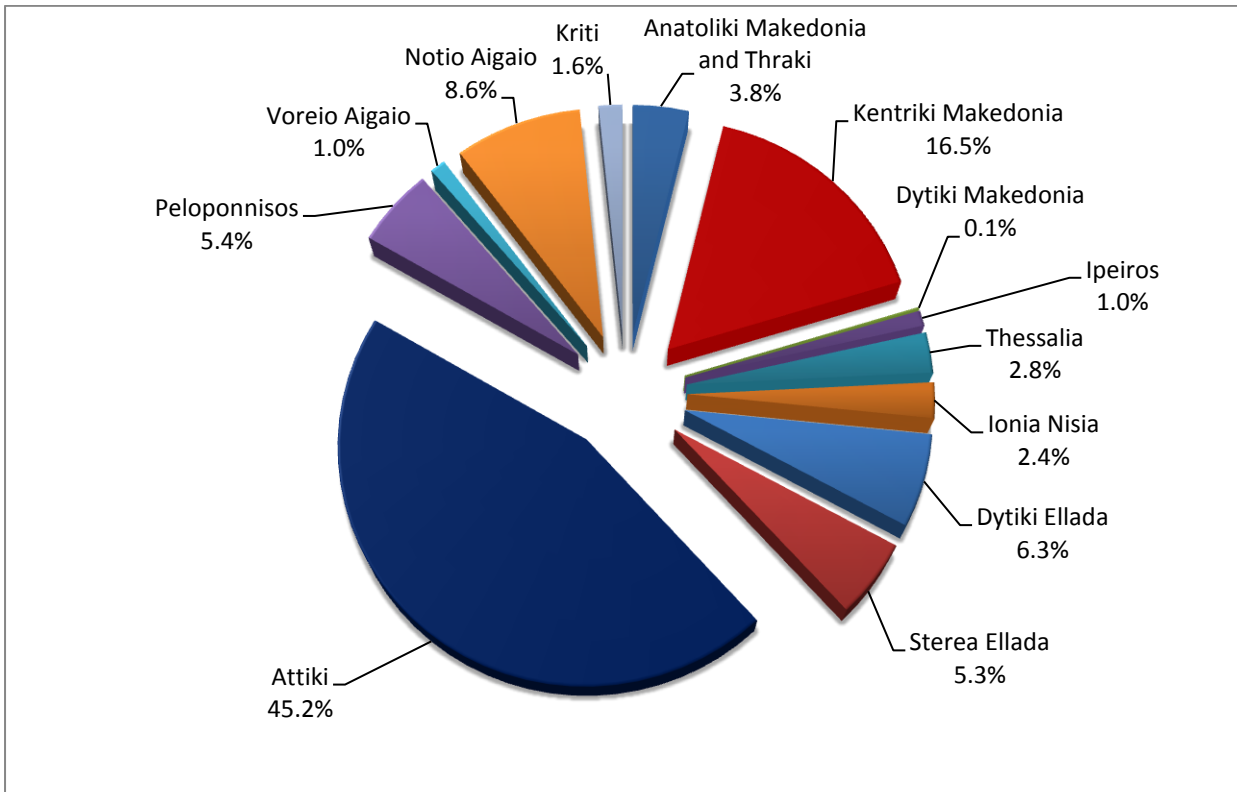
* Provisional data

Table 2: Road traffic accidents and casualties, by region and department, August 2019 and 2020* (Continued)

Region and department	Road accidents			Fatalities			Serious injuries			Slight injuries		
	2019	2020*	%	2019	2020*	%	2019	2020*	%	2019	2020*	%
Dytiki Ellada (West Greece)	59	55	-6.8	10	5	-50.0	2	8	300.0	64	57	-10.9
Etolia & Akarnania	22	18	-18.2	1	1		1	2		25	16	
Achaia	26	27	3.8	6	1		1	3		29	31	
Illia	11	10	-9.1	3	3		0	3		10	10	
Sterea Ellada	57	46	-19.3	4	4	0.0	10	2	-80.0	64	68	6.3
Viotia	8	4	-50.0	2	0		2	0		6	6	
Evia	36	29	-19.4	1	1		6	1		46	43	
Evrytania	1	0	-100.0	0	0		0	0		2	0	
Fthiotida	10	10	0.0	1	3		2	1		8	8	
Fokida	2	3	50.0	0	0		0	0		2	11	
Attiki (Attica)	379	394	4.0	17	21	23.5	17	15	-11.8	450	429	-4.7
Peloponnisos (Peloponnese)	69	47	-31.9	4	4	0.0	3	4	33.3	96	52	-45.8
Argolida	10	9	-10.0	1	0		0	2		11	8	
Arkadia	15	4	-73.3	0	1		0	0		20	5	
Korinthia	34	27	-20.6	1	2		2	2		50	30	
Lakonia	1	1	0.0	1	0		0	0		2	2	
Messinia	9	6	-33.3	1	1		1	0		13	7	
Voreio Aigaio (North Aegean)	28	9	-67.9	0	0	-	3	0	-100.0	33	9	-72.7
Lesvos	18	4	-77.8	0	0		1	0		22	4	
Samos	9	2	-77.8	0	0		1	0		11	2	
Chios	1	3	200.0	0	0		1	0		0	3	
Notio Aigaio (South Aegean)	84	75	-10.7	9	5	-44.4	11	10	-9.1	97	81	-16.5
Dodekanissos	34	27	-20.6	6	4		4	2		33	27	
Kyklades	50	48	-4.0	3	1		7	8		64	54	
Kriti (Crete)	21	14	-33.3	5	4	-20.0	6	0	-100.0	16	14	-12.5
Iraklio	17	5	-70.6	4	1		6	0		11	7	
Lassithi	1	3	200.0	0	1		0	0		1	2	
Rethymno	1	3	200.0	0	2		0	0		1	2	
Chania	2	3	50.0	1	0		0	0		3	3	

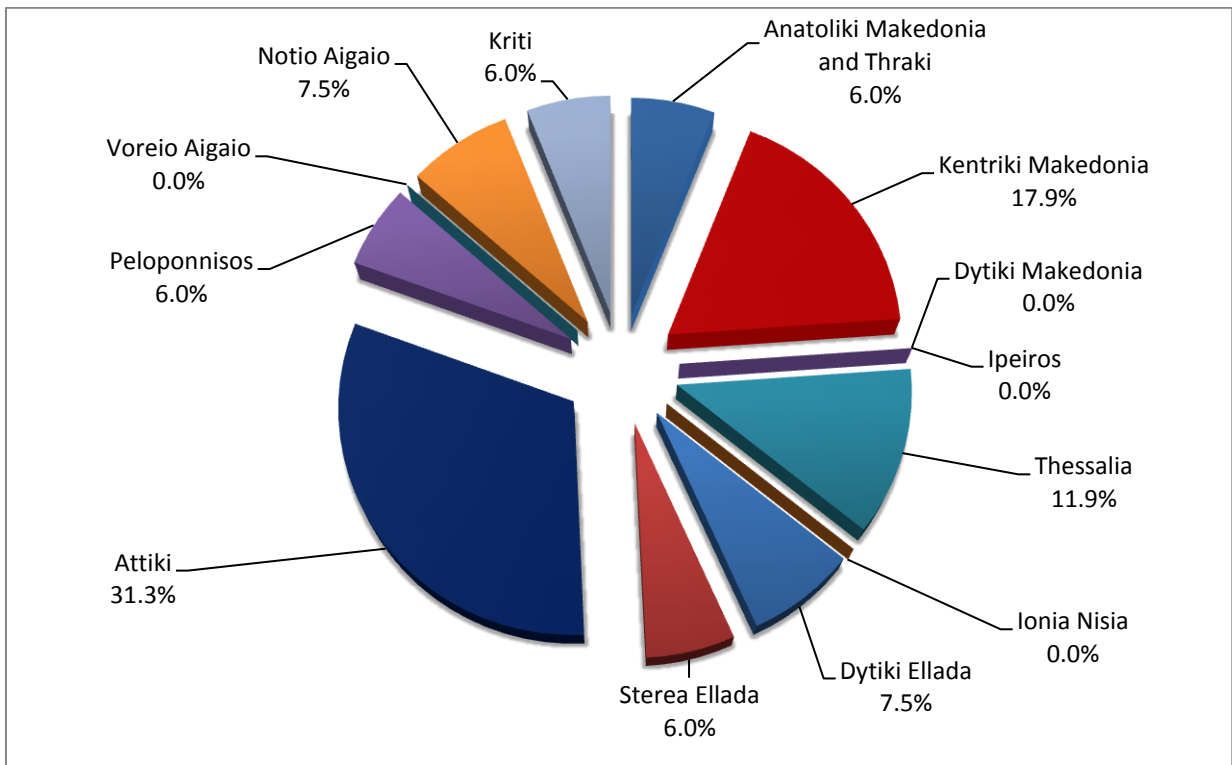
* Provisional data

Graph 3: Road traffic accidents by region, August 2020 *



* Provisional data

Graph 4: Fatalities by region, August 2020 *



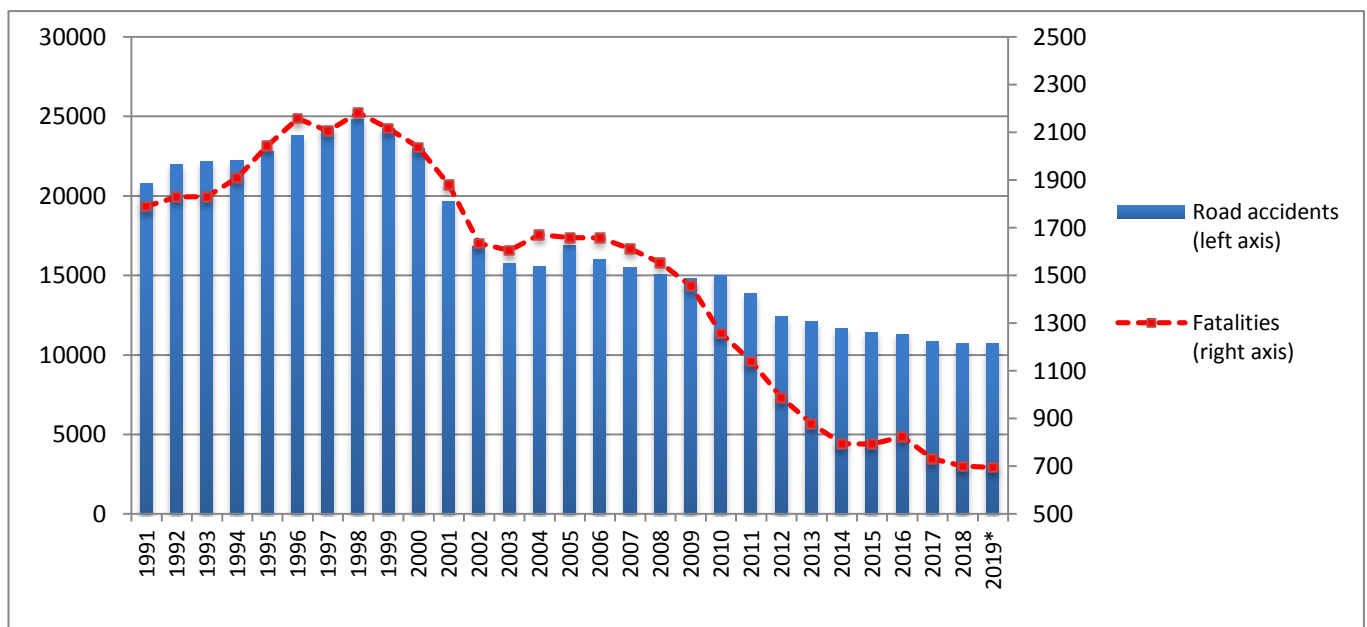
* Provisional data

Table 3: Road traffic accidents and casualties for the period January - August 2018, 2019 and 2020*

	2018		2019		2020 *
	January - August	Total year	January - August	Total year*	January - August
Road Accidents	6,973	10,737	7,108	10,756	5,974
<i>Annual Change (%)</i>			1.9	0.2	-16.0
Fatalities	445	700	461	695	363
<i>Annual Change (%)</i>			3.6	-0.7	-21.3
Serious injuries	482	727	447	638	319
<i>Annual Change (%)</i>			-7.3	-12.2	-28.6
Slight injuries	8,032	12,422	8,216	12,290	6,710
<i>Annual Change (%)</i>			2.3	-1.1	-18.3

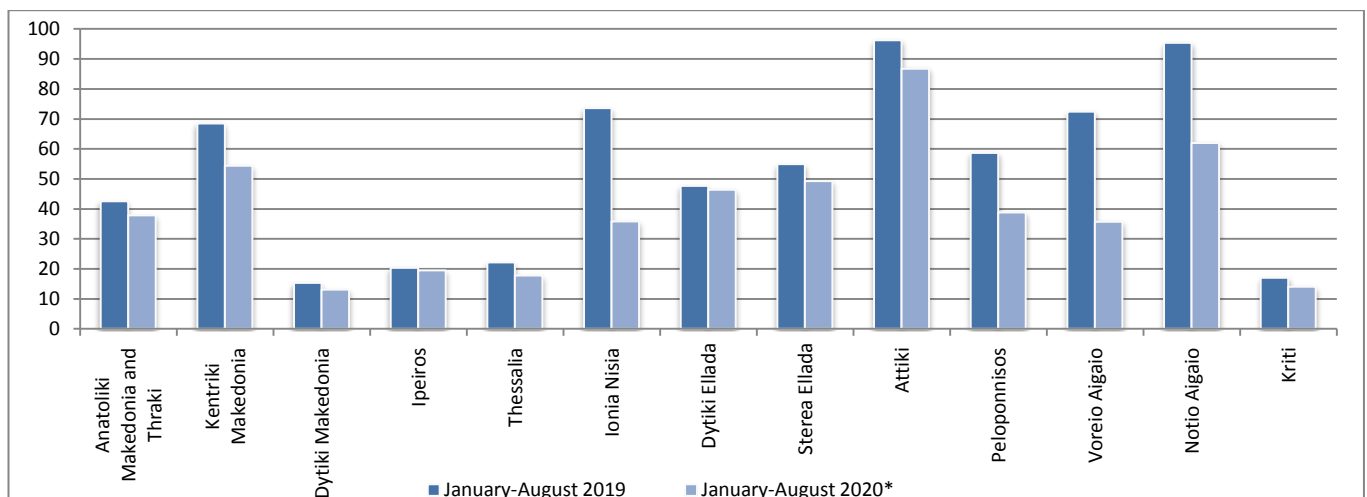
* Provisional data

Graph 5: Total road traffic accidents and fatalities, 1991-2019*



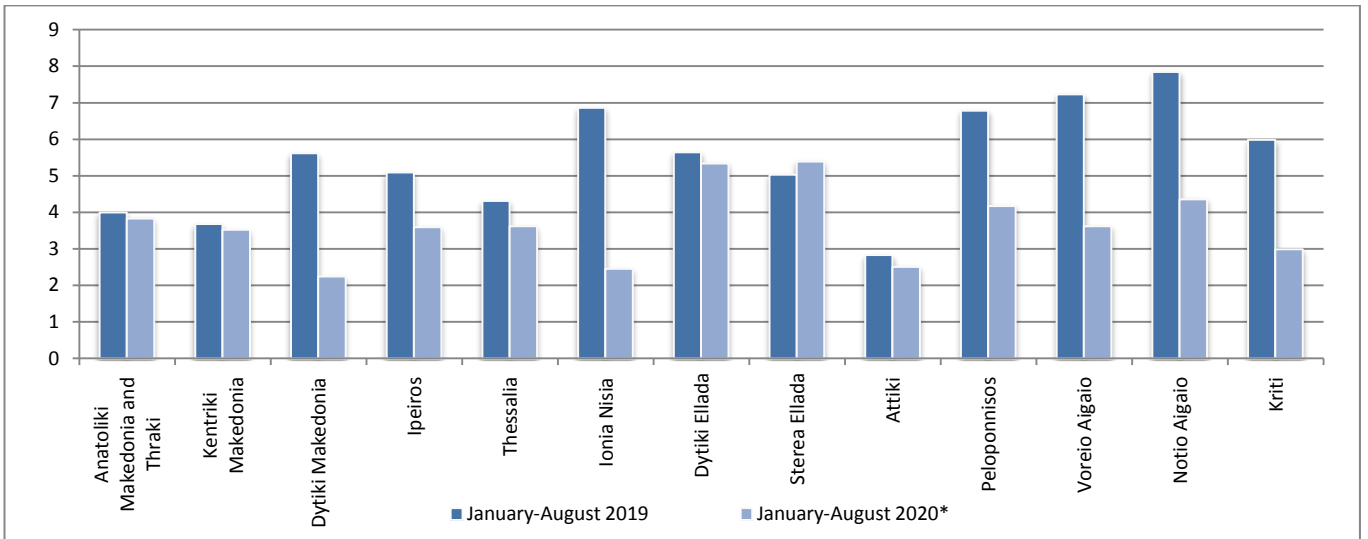
*Provisional data for the period September 2019 – December 2019

Graph 6: Road traffic accidents per 100,000 inhabitants

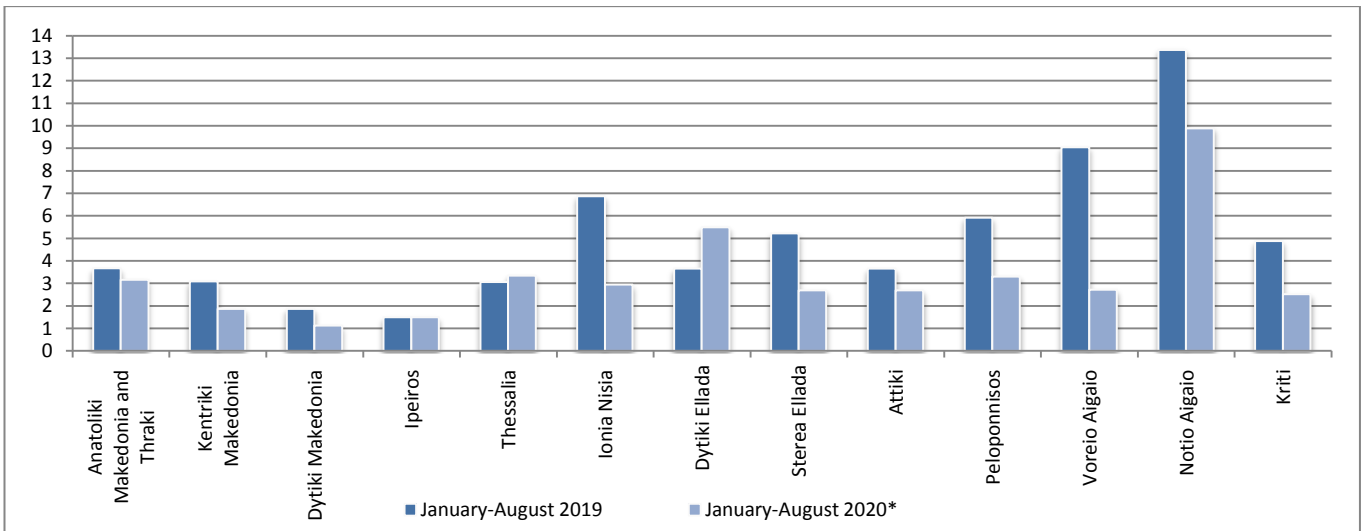


* Provisional data

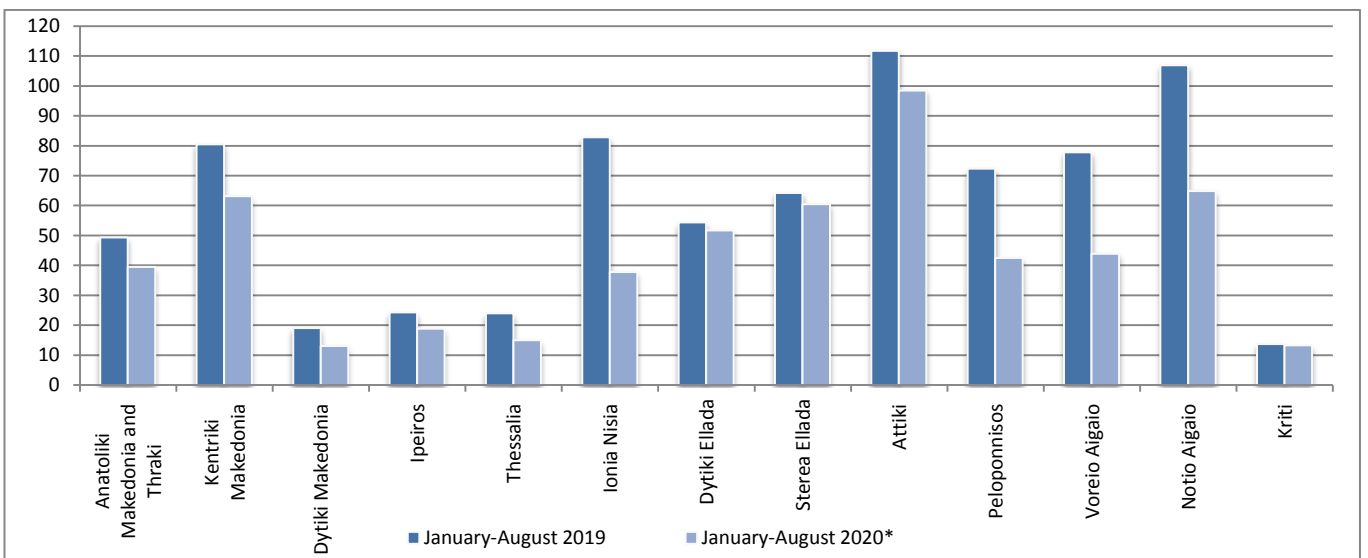
Graph 7: Fatalities per 100,000 inhabitants



Graph 8: Serious injuries per 100,000 inhabitants



Graph 9: Slight injuries per 100,000 inhabitants



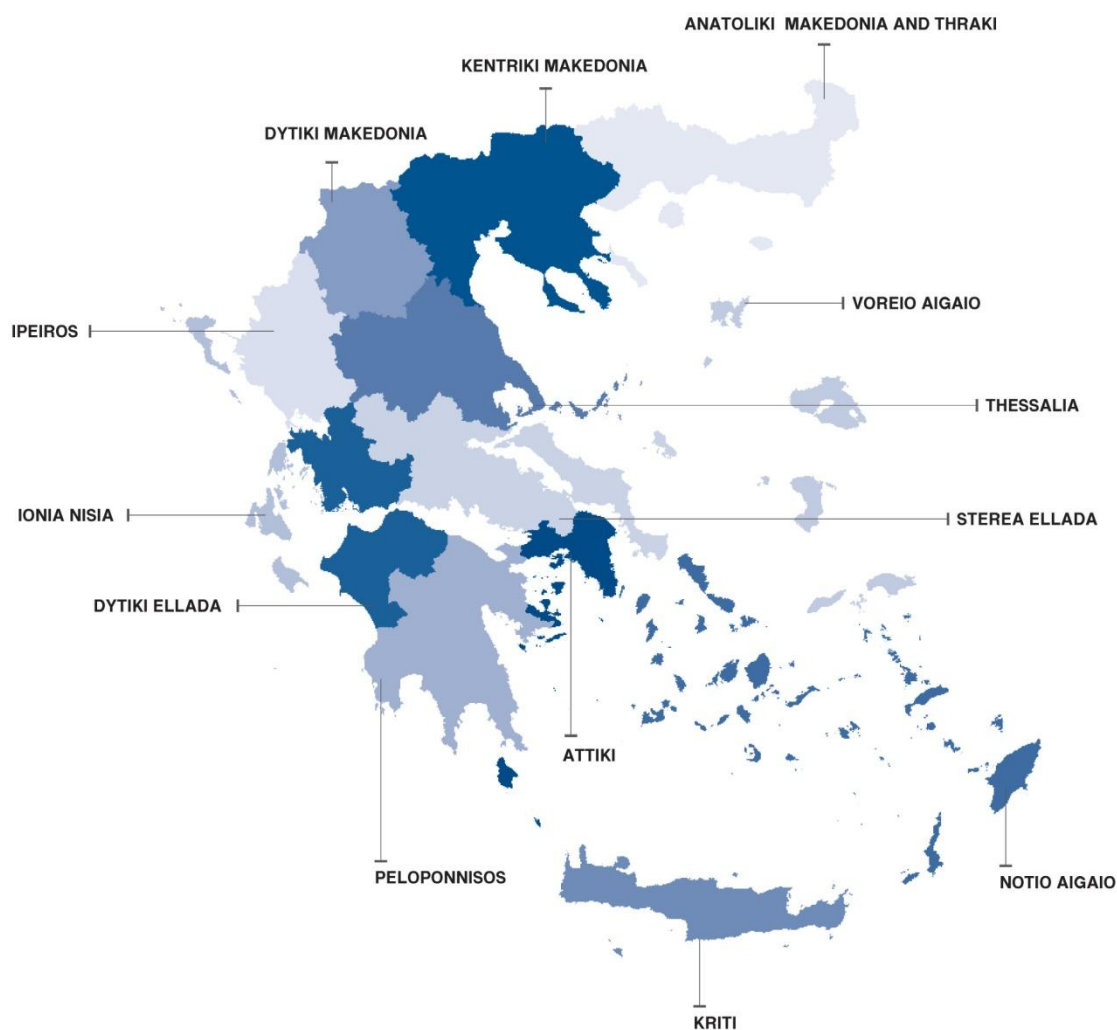
* Provisional data

EXPLANATORY NOTES

Survey on Road Traffic Accidents The Survey on Road Traffic Accidents is conducted on a monthly basis and it records, for each region (see map) and department of Greece and for each month separately, the number of accidents resulting in death or injury, as well as the number of persons injured by categories (drivers, passengers, pedestrians).

On a yearly basis, road traffic accidents are further analyzed. The competent agencies for filling in/collecting the forms on road accidents are the local Police Authorities and the local Port Authorities of Greece.

The lower level of analysis for the place where an injury road accident occurred is the settlement. Data are collected on a monthly basis. The main variables are the following: place of accident, kind of road, casualties, conditions of road surface and type of road.



Legal basis The Survey on Road Traffic Accidents is governed by Council Decision 93/704 of the European Community.

Reference period Monthly.

Availability of data Provisional data are available 2 months after the reference month.
Final data are available 10 months after the reference year.

Definitions **Road accident** (injury accident): Any accident involving at least one road motor vehicle in motion on a public road or square to which the public has access (excluding yards, industrial sites or vehicle depot of public transport enterprises), resulting in at least one injured or killed person. Accidents with only material damages are not included.

Fatality (Death): Any person killed immediately or dying within 30 days as a result of an injury accident (This national definition applies since 01.01.1996)

Person injured: Any person who sustained an injury as result of an injury accident, and who normally needs medical treatment.

Serious injury: Any person who sustained an injury as result of an injury accident, such as brain damages, mutilation, multiple injuries, which may result in lack of awareness or which are life-threatening.

Slight injury: Any person injured who sustained minor and not life-threatening injuries.

Vehicle: Include motor vehicles, trolleybuses, motorcycles, bicycles, motorbikes, agricultural and road making machines, animal and hand-drawn vehicles. Railway vehicles are excluded, unless the road accident involves at least one of the aforementioned types of vehicles and therefore, railway vehicles are considered vehicles.

Methodology The forms of the survey are filled in by the local Police Authorities and the local Port Authorities as well.

References More information about Road Traffic Accidents is available on ELSTAT's website and more specifically at the link: <https://www.statistics.gr/en/statistics/-/publication/SDT03/>.