



## INDUSTRIAL PRODUCTION INDEX: September 2024, y-o-y increase of 2.5%

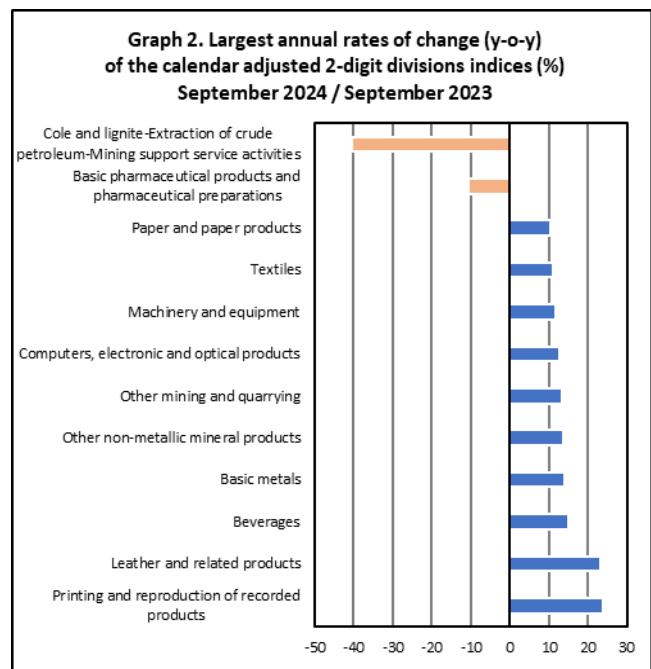
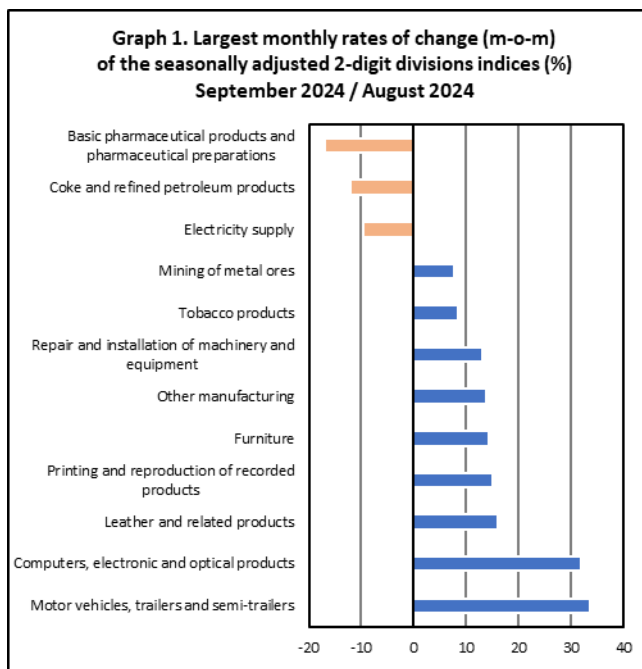
The Hellenic Statistical Authority announces the Industrial Production Index (IPI) with base year 2015=100.0 for September 2024, the evolution of which, on the basis of provisional and working day adjusted data, is as follows:

The Overall Industrial Production Index in September 2024 recorded an increase of 2.5% compared with September 2023. The Overall IPI in September 2023 increased by 1.8% compared with the corresponding index in September 2022 (Table 1).

The average Overall Industrial Production Index for the period from January to September 2024 recorded an increase of 6.2% compared with the average IPI of the period from January to September 2023 (Table 2).

The seasonally adjusted Overall Industrial Production Index in September 2024 recorded a decrease of 2.1% compared with the corresponding index of August 2024 (Table 4).

The index of basic pharmaceutical products and pharmaceutical preparations division showed the greatest percentage decrease, whereas the index of motor vehicles, trailers and semi-trailers division recorded the greatest percentage increase in September 2024 compared with August 2024. Comparing the indices of September 2024 with the corresponding indices of September 2023, the greatest percentage increase was recorded in printing and reproduction of recorded products division, while the highest percentage decrease was recorded in mining of coal and lignite – extraction of crude petroleum and natural gas – mining support service activities divisions (Tables 1 and 4).



### Information on methodological issues:

Business Statistics Division  
Manufacture-Construction Indices and Industrial Products Section  
Head of the Section: Diamantaki Aikaterini  
Tel: +30 213 135 2056  
E-mail: [a.diamantaki@statistics.gr](mailto:a.diamantaki@statistics.gr)

### Information on data provision:

Tel: +30 213 135 2023, 2308, 2310  
E-mail: [data.dissem@statistics.gr](mailto:data.dissem@statistics.gr)

## Evolution of the Industrial Production Index in September 2024

### I. Annual changes: September 2024 / September 2023 (Table 1)

The 2.5% increase of the working day adjusted Overall IPI in September 2024, compared with the corresponding index in September 2023, is due to the annual changes of the sub-indices in the following industrial sections:

#### Increase of:

- 9.6% in the Mining and Quarrying Index. The increase was the result of the annual changes of the sub-indices in the following 2-digit divisions: other mining and quarrying, mining of metal ores.
- 5.2% in the Manufacturing Index. The increase was mainly the result of the annual changes of the sub-indices in the following 2-digit divisions: printing and reproduction of recorded products, leather and related products, beverages, basic metals, other non-metallic mineral products.
- 4.4% in the Water Supply Index.

#### Decrease of:

- 8.9% in the Electricity Supply Index.

### II. Rates of change of the average index of the period January - September 2024 compared with the corresponding index of the period January - September 2023 (Table 2)

The 6.2% increase of the working day adjusted average Overall IPI in the 9-month period January - September 2024, compared with the corresponding index in January - September 2023, is due to the corresponding rates of change of the sub-indices in the following industrial sections:

#### Increase of:

- 11.9% in the Electricity Supply Index.
- 5.0% in the Manufacturing Index.
- 4.6% in the Water Supply Index.
- 1.1% in the Mining and Quarrying Index

### III. Monthly changes: September 2024 / August 2024 (Table 4)

The 2.1% decrease of the seasonally adjusted Overall IPI in September 2024, compared with the corresponding index in August 2024 is due to the monthly changes of the sub-indices in the following industrial sections:

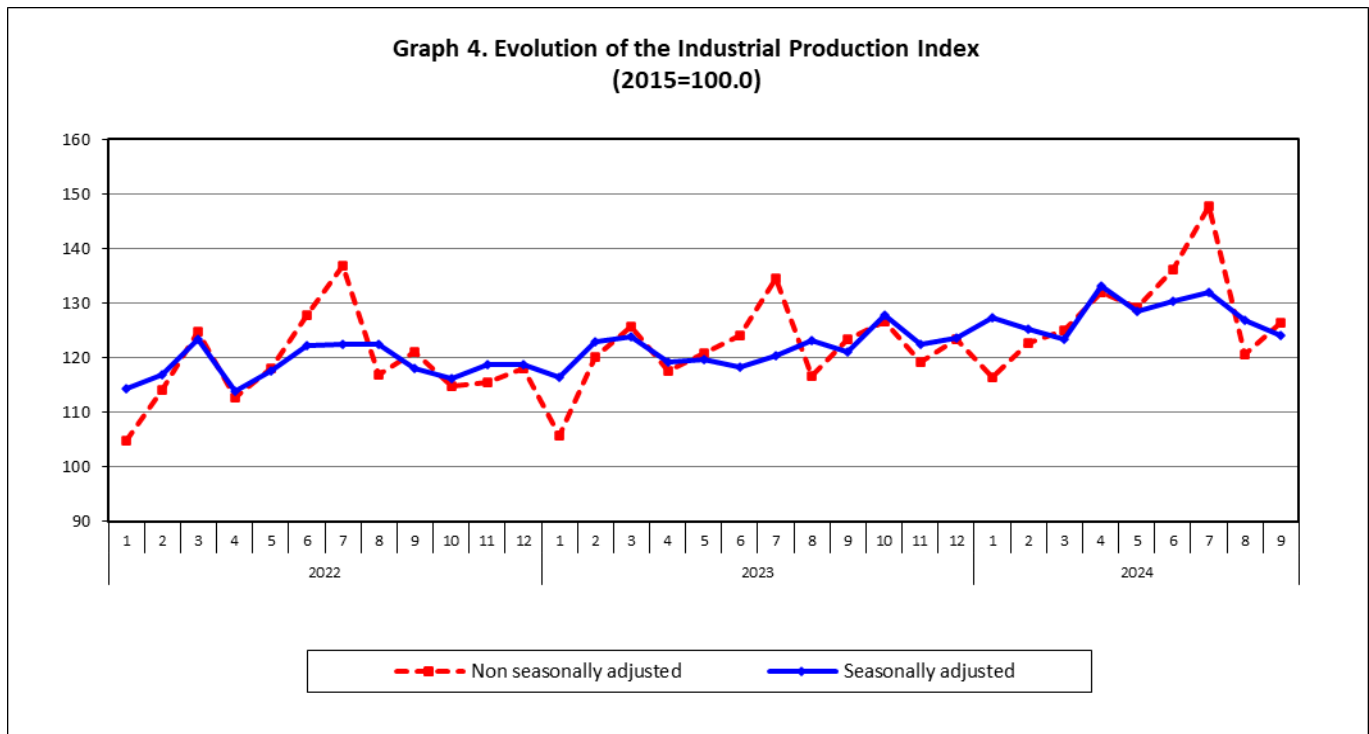
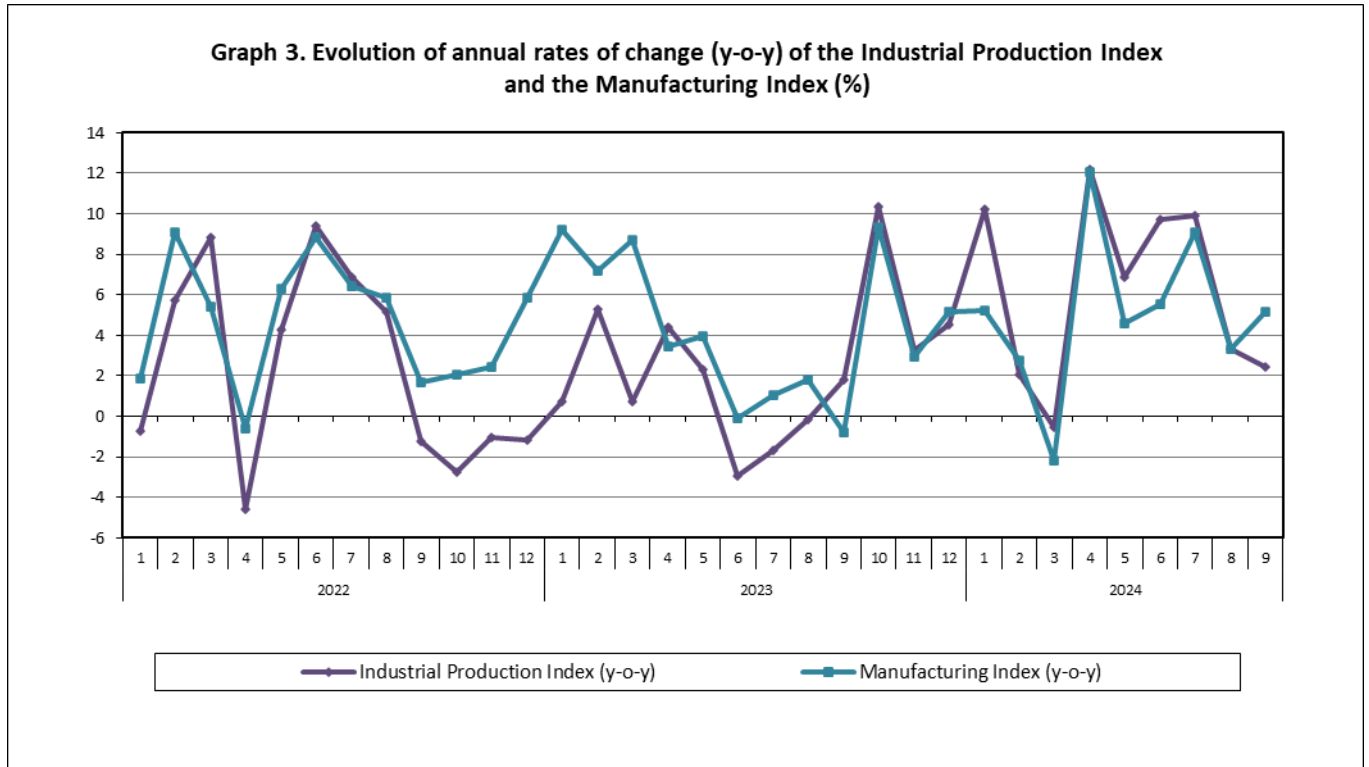
#### Decrease of:

- 9.7% in the Electricity Supply Index.
- 1.3% in the Water Supply Index.

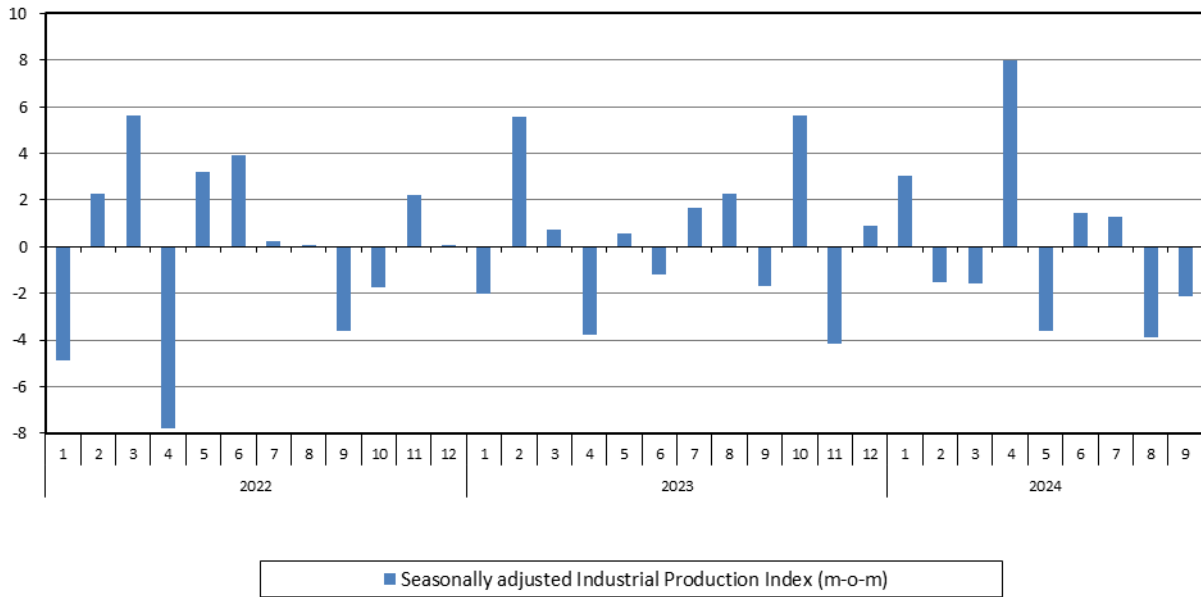
#### Increase of:

- 0.2% in the Manufacturing Index.
- 3.8% in the Mining and Quarrying Index.

The following graphs depict the annual rates of change (y-o-y) of the Industrial Production Index and the Manufacturing Index, the evolution of the seasonally and non-seasonally adjusted Overall Industrial Production Index, as well as the monthly rates of change (m-o-m) of the seasonally adjusted index.



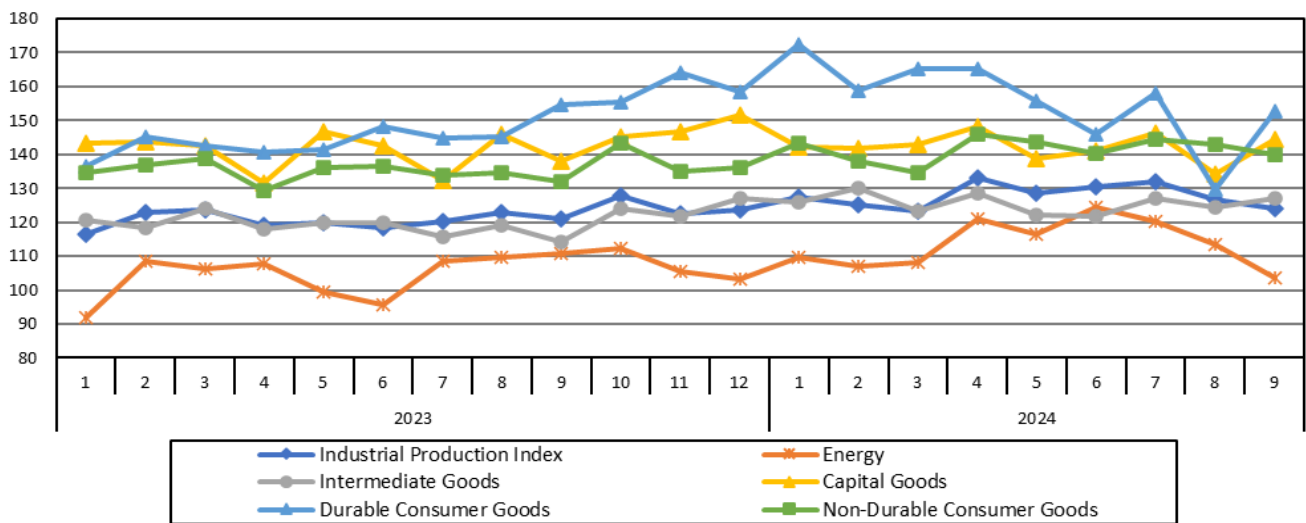
**Graph 5. Evolution of the monthly rates of change (m-o-m) of the seasonally adjusted Industrial Production Index (%)**



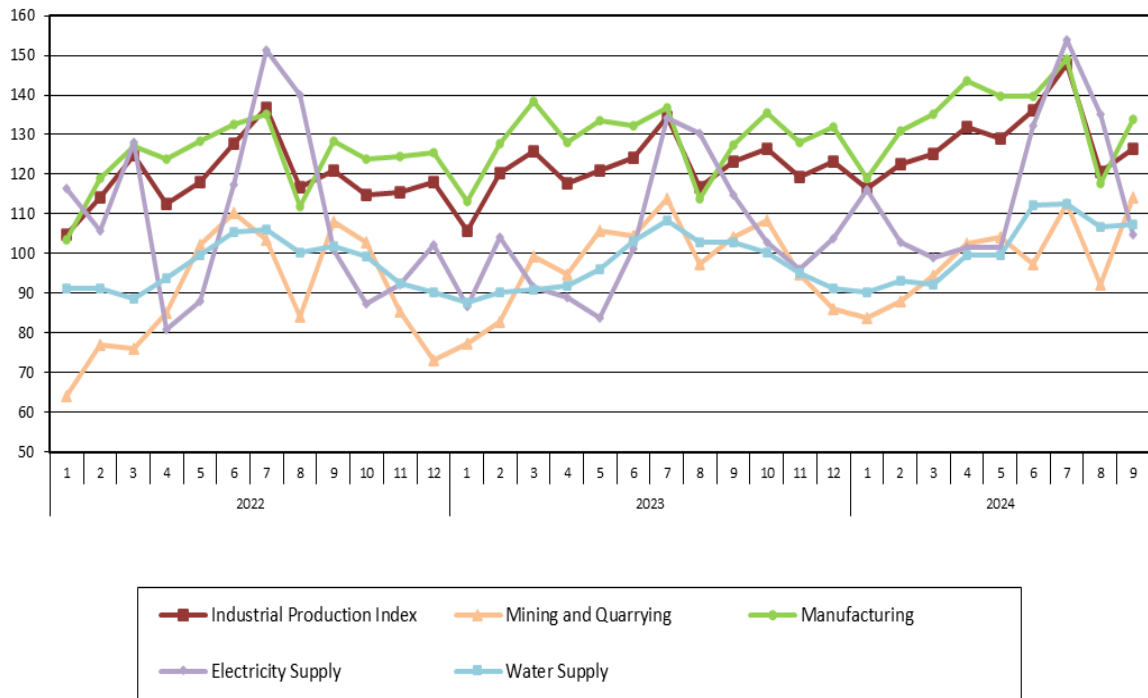
It should be noted that the time series with the seasonally adjusted indices is recalculated every time a new observation is added in the time series. Therefore, the seasonally adjusted data differ from the data published in the previous Announcement.

The following graphs depict the evolution of the seasonally adjusted Industrial Production Index and the Main Industrial Groupings, as well as the evolution of the Industrial Production Index and the Industrial Sections Indices.

**Graph 6. Evolution of the seasonally adjusted Industrial Production Index and the Main Industrial Groupings Indices, January 2023 - September 2024 (2015=100.0)**



**Graph 7. Evolution of the Industrial Production Index and the Industrial Section Indices  
(2015=100.0)**



**Table 1. Annual rates of change of the Industrial Production Index***(Working day adjusted data, according to the real number of working days)*

Base year: 2015=100.0

| Code                             | Division   | September     |               |               | Rate of change (%) |             |
|----------------------------------|--|---------------|---------------|---------------|--------------------|-------------|
|                                  |  | 2024*         | 2023          | 2022          | 2024/2023          | 2023/2022   |
| <b>OVERALL INDEX</b>             |  | <b>126.29</b> | <b>123.27</b> | <b>121.10</b> | <b>2.5</b>         | <b>1.8</b>  |
| <b>B</b>                         | <b>MINING AND QUARRYING</b>  | <b>114.12</b> | <b>104.16</b> | <b>107.91</b> | <b>9.6</b>         | <b>-3.5</b> |
| 05-06-09                         | Mining of coal and lignite – Extraction of crude petroleum and natural gas – Mining support service activities | 14.26         | 23.89         | 26.72         | -40.3              | -10.6       |
| 07                               | Mining of metal ores   | 146.86        | 139.99        | 138.52        | 4.9                | 1.1         |
| 08                               | Other mining and quarrying   | 117.54        | 103.63        | 109.32        | 13.4               | -5.2        |
| <b>C</b>                         | <b>MANUFACTURING</b>   | <b>133.96</b> | <b>127.36</b> | <b>128.39</b> | <b>5.2</b>         | <b>-0.8</b> |
| 10                               | Food   | 127.97        | 117.95        | 124.38        | 8.5                | -5.2        |
| 11                               | Beverages  | 127.78        | 111.27        | 116.53        | 14.8               | -4.5        |
| 12                               | Tobacco products   | 167.93        | 153.25        | 128.73        | 9.6                | 19.0        |
| 13                               | Textiles   | 117.40        | 105.75        | 125.78        | 11.0               | -15.9       |
| 14                               | Wearing apparel  | 71.55         | 77.09         | 95.04         | -7.2               | -18.9       |
| 15                               | Leather and related products   | 115.33        | 93.64         | 95.66         | 23.2               | -2.1        |
| 16                               | Wood and products of wood and cork, except furniture   | 98.30         | 97.46         | 134.32        | 0.9                | -27.4       |
| 17                               | Paper and paper products   | 123.56        | 111.78        | 120.69        | 10.5               | -7.4        |
| 18                               | Printing and reproduction of recorded products   | 160.37        | 129.64        | 131.49        | 23.7               | -1.4        |
| 19                               | Coke and refined petroleum products  | 104.29        | 110.56        | 102.68        | -5.7               | 7.7         |
| 20                               | Chemicals and chemical products  | 145.14        | 136.54        | 144.11        | 6.3                | -5.3        |
| 21                               | Basic pharmaceutical products and pharmaceutical preparations  | 219.34        | 245.75        | 202.20        | -10.7              | 21.5        |
| 22                               | Rubber and plastic products  | 132.97        | 120.91        | 125.01        | 10.0               | -3.3        |
| 23                               | Other non-metallic mineral products  | 143.78        | 126.61        | 122.17        | 13.6               | 3.6         |
| 24                               | Basic metals   | 136.85        | 119.89        | 131.39        | 14.1               | -8.7        |
| 25                               | Fabricated metal products, except machinery and equipment  | 147.25        | 140.70        | 150.55        | 4.6                | -6.5        |
| 26                               | Computers, electronic and optical products   | 265.24        | 235.39        | 270.26        | 12.7               | -12.9       |
| 27                               | Electrical equipment   | 153.28        | 143.89        | 139.96        | 6.5                | 2.8         |
| 28                               | Machinery and equipment n. e. c.   | 114.88        | 102.83        | 117.02        | 11.7               | -12.1       |
| 29                               | Motor vehicles, trailers and semi-trailers   | 154.59        | 157.84        | 131.48        | -2.1               | 20.1        |
| 30                               | Other transport equipment  | 59.14         | 66.01         | 77.05         | -10.4              | -14.3       |
| 31                               | Furniture  | 141.90        | 132.66        | 151.64        | 7.0                | -12.5       |
| 32                               | Other manufacturing  | 170.73        | 156.88        | 136.57        | 8.8                | 14.9        |
| 33                               | Repair and installation of machinery and equipment   | 115.49        | 105.97        | 102.36        | 9.0                | 3.5         |
| <b>D</b>                         | <b>ELECTRICITY SUPPLY</b>  | <b>104.71</b> | <b>114.94</b> | <b>101.01</b> | <b>-8.9</b>        | <b>13.8</b> |
| 35                               | Electricity supply   | 104.71        | 114.94        | 101.01        | -8.9               | 13.8        |
| <b>E</b>                         | <b>WATER SUPPLY</b>  | <b>107.51</b> | <b>102.94</b> | <b>101.78</b> | <b>4.4</b>         | <b>1.1</b>  |
| 36                               | Water collection, treatment and supply   | 107.51        | 102.94        | 101.78        | 4.4                | 1.1         |
| <b>MAIN INDUSTRIAL GROUPINGS</b> |  |               |               |               |                    |             |
| 1                                | Energy   | 104.55        | 112.10        | 101.43        | -6.7               | 10.5        |
| 2                                | Intermediate goods   | 132.18        | 119.00        | 126.46        | 11.1               | -5.9        |
| 3                                | Capital goods  | 142.09        | 135.92        | 140.11        | 4.5                | -3.0        |
| 4                                | Consumer Durables  | 159.98        | 161.52        | 142.87        | -1.0               | 13.1        |
| 5                                | Consumer Non-Durables  | 142.11        | 134.80        | 134.58        | 5.4                | 0.2         |

\* Provisional data

Note: The indices are rounded up to two decimal digits when published and percentage changes up to one decimal digit when published.

**Table 2. Average indices of the period January – September and rates of change of the Industrial Production Index**  
(Working day adjusted data, according to the real number of working days)

Base year: 2015=100.0

| Code                             | Division   | Average indices of the period Jan.-Sept. |               |               | Rate of change (%) |             |
|----------------------------------|--|--|---------------|---------------|--------------------|-------------|
|                                  |  | 2024*                                    | 2023          | 2022          | 2024/2023          | 2023/2022   |
| <b>OVERALL INDEX</b>             |  | <b>128.44</b>                            | <b>120.98</b> | <b>119.68</b> | <b>6.2</b>         | <b>1.1</b>  |
| <b>B</b>                         | <b>MINING AND QUARRYING</b>  | <b>98.82</b>                             | <b>97.73</b>  | <b>90.07</b>  | <b>1.1</b>         | <b>8.5</b>  |
| 05-06-09                         | Mining of coal and lignite – Extraction of crude petroleum and natural gas – Mining support service activities | 16.31                                    | 24.43         | 20.95         | -33.2              | 16.6        |
| 07                               | Mining of metal ores   | 123.81                                   | 125.46        | 120.96        | -1.3               | 3.7         |
| 08                               | Other mining and quarrying   | 102.35                                   | 98.96         | 89.61         | 3.4                | 10.4        |
| <b>C</b>                         | <b>MANUFACTURING</b>   | <b>134.33</b>                            | <b>127.94</b> | <b>123.35</b> | <b>5.0</b>         | <b>3.7</b>  |
| 10                               | Food   | 125.32                                   | 118.26        | 113.72        | 6.0                | 4.0         |
| 11                               | Beverages  | 119.52                                   | 110.52        | 112.00        | 8.1                | -1.3        |
| 12                               | Tobacco products   | 159.98                                   | 141.70        | 120.43        | 12.9               | 17.7        |
| 13                               | Textiles   | 108.28                                   | 109.37        | 112.56        | -1.0               | -2.8        |
| 14                               | Wearing apparel  | 65.22                                    | 72.90         | 81.13         | -10.5              | -10.1       |
| 15                               | Leather and related products   | 93.79                                    | 96.99         | 81.16         | -3.3               | 19.5        |
| 16                               | Wood and products of wood and cork, except furniture   | 101.69                                   | 107.78        | 110.55        | -5.6               | -2.5        |
| 17                               | Paper and paper products   | 114.49                                   | 113.08        | 118.36        | 1.2                | -4.5        |
| 18                               | Printing and reproduction of recorded products   | 137.47                                   | 125.62        | 135.54        | 9.4                | -7.3        |
| 19                               | Coke and refined petroleum products  | 115.98                                   | 109.77        | 105.35        | 5.7                | 4.2         |
| 20                               | Chemicals and chemical products  | 137.42                                   | 126.83        | 127.14        | 8.3                | -0.2        |
| 21                               | Basic pharmaceutical products and pharmaceutical preparations  | 275.63                                   | 273.31        | 219.56        | 0.8                | 24.5        |
| 22                               | Rubber and plastic products  | 128.07                                   | 124.62        | 128.66        | 2.8                | -3.1        |
| 23                               | Other non-metallic mineral products  | 141.75                                   | 126.48        | 122.40        | 12.1               | 3.3         |
| 24                               | Basic metals   | 133.17                                   | 128.45        | 130.08        | 3.7                | -1.3        |
| 25                               | Fabricated metal products, except machinery and equipment  | 140.66                                   | 134.13        | 136.08        | 4.9                | -1.4        |
| 26                               | Computers, electronic and optical products   | 241.80                                   | 228.54        | 213.02        | 5.8                | 7.3         |
| 27                               | Electrical equipment   | 144.60                                   | 135.03        | 141.27        | 7.1                | -4.4        |
| 28                               | Machinery and equipment n. e. c.   | 122.22                                   | 122.12        | 120.34        | 0.1                | 1.5         |
| 29                               | Motor vehicles, trailers and semi-trailers   | 137.48                                   | 158.78        | 144.99        | -13.4              | 9.5         |
| 30                               | Other transport equipment  | 68.43                                    | 68.71         | 71.37         | -0.4               | -3.7        |
| 31                               | Furniture  | 145.18                                   | 148.74        | 144.22        | -2.4               | 3.1         |
| 32                               | Other manufacturing  | 134.79                                   | 134.74        | 127.37        | 0.0                | 5.8         |
| 33                               | Repair and installation of machinery and equipment   | 101.30                                   | 92.24         | 91.79         | 9.8                | 0.5         |
| <b>D</b>                         | <b>ELECTRICITY SUPPLY</b>  | <b>116.31</b>                            | <b>103.98</b> | <b>114.34</b> | <b>11.9</b>        | <b>-9.1</b> |
| 35                               | Electricity supply   | 116.31                                   | 103.98        | 114.34        | 11.9               | -9.1        |
| <b>E</b>                         | <b>WATER SUPPLY</b>  | <b>101.59</b>                            | <b>97.14</b>  | <b>97.56</b>  | <b>4.6</b>         | <b>-0.4</b> |
| 36                               | Water collection, treatment and supply   | 101.59                                   | 97.14         | 97.56         | 4.6                | -0.4        |
| <b>MAIN INDUSTRIAL GROUPINGS</b> |  |  |               |               |                    |             |
| 1                                | Energy   | 114.47                                   | 104.96        | 109.60        | 9.1                | -4.2        |
| 2                                | Intermediate goods   | 126.42                                   | 119.69        | 121.13        | 5.6                | -1.2        |
| 3                                | Capital goods  | 133.78                                   | 132.02        | 126.88        | 1.3                | 4.1         |
| 4                                | Consumer Durables  | 152.01                                   | 139.94        | 131.32        | 8.6                | 6.6         |
| 5                                | Consumer Non-Durables  | 144.26                                   | 137.47        | 128.24        | 4.9                | 7.2         |

\* Provisional data

Note: The indices are rounded up to two decimal digits when published and percentage changes up to one decimal digit when published.

**Table 3. Monthly rate of change of the Industrial Production Index**  
(Working day adjusted data, according to the real number of working days)

Base year: 2015=100.0

| Code                             | Division   | September<br>2024* | August<br>2024** | Rate of change (%)<br>Sept. 2024/August 2024 |
|----------------------------------|--|--------------------|------------------|--|
| <b>OVERALL INDEX</b>             |  | <b>126.29</b>      | <b>120.47</b>    | <b>4.8</b>                                   |
| <b>B</b>                         | <b>MINING AND QUARRYING</b>  | <b>114.12</b>      | <b>92.31</b>     | <b>23.6</b>                                  |
| 05-06-09                         | Mining of coal and lignite – Extraction of crude petroleum and natural gas – Mining support service activities | 14.26              | 10.95            | 30.3   |
| 07                               | Mining of metal ores   | 146.86             | 113.74           | 29.1   |
| 08                               | Other mining and quarrying   | 117.54             | 96.89            | 21.3   |
| <b>C</b>                         | <b>MANUFACTURING</b>   | <b>133.96</b>      | <b>117.78</b>    | <b>13.7</b>                                  |
| 10                               | Food   | 127.97             | 151.04           | -15.3  |
| 11                               | Beverages  | 127.78             | 129.53           | -1.4   |
| 12                               | Tobacco products   | 167.93             | 103.59           | 62.1   |
| 13                               | Textiles   | 117.40             | 65.53            | 79.2   |
| 14                               | Wearing apparel  | 71.55              | 52.24            | 37.0   |
| 15                               | Leather and related products   | 115.33             | 42.68            | 170.2  |
| 16                               | Wood and products of wood and cork, except furniture   | 98.30              | 61.94            | 58.7   |
| 17                               | Paper and paper products   | 123.56             | 94.14            | 31.3   |
| 18                               | Printing and reproduction of recorded products   | 160.37             | 101.47           | 58.0   |
| 19                               | Coke and refined petroleum products  | 104.29             | 120.88           | -13.7  |
| 20                               | Chemicals and chemical products  | 145.14             | 90.11            | 61.1   |
| 21                               | Basic pharmaceutical products and pharmaceutical preparations  | 219.34             | 173.64           | 26.3   |
| 22                               | Rubber and plastic products  | 132.97             | 94.37            | 40.9   |
| 23                               | Other non-metallic mineral products  | 143.78             | 115.02           | 25.0   |
| 24                               | Basic metals   | 136.85             | 111.56           | 22.7   |
| 25                               | Fabricated metal products, except machinery and equipment  | 147.25             | 102.14           | 44.2   |
| 26                               | Computers, electronic and optical products   | 265.24             | 139.05           | 90.8   |
| 27                               | Electrical equipment   | 153.28             | 101.87           | 50.5   |
| 28                               | Machinery and equipment n. e. c.   | 114.88             | 80.20            | 43.2   |
| 29                               | Motor vehicles, trailers and semi-trailers   | 154.59             | 83.71            | 84.7   |
| 30                               | Other transport equipment  | 59.14              | 46.59            | 27.0   |
| 31                               | Furniture  | 141.90             | 72.15            | 96.7   |
| 32                               | Other manufacturing  | 170.73             | 106.01           | 61.1   |
| 33                               | Repair and installation of machinery and equipment   | 115.49             | 62.88            | 83.7   |
| <b>D</b>                         | <b>ELECTRICITY SUPPLY</b>  | <b>104.71</b>      | <b>135.23</b>    | <b>-22.6</b>                                 |
| 35                               | Electricity supply   | 104.71             | 135.23           | -22.6  |
| <b>E</b>                         | <b>WATER SUPPLY</b>  | <b>107.51</b>      | <b>106.77</b>    | <b>0.7</b>                                   |
| 36                               | Water collection, treatment and supply   | 107.51             | 106.77           | 0.7  |
| <b>MAIN INDUSTRIAL GROUPINGS</b> |  |                    |                  |  |
| 1                                | Energy   | 104.55             | 127.51           | -18.0  |
| 2                                | Intermediate goods   | 132.18             | 101.11           | 30.7   |
| 3                                | Capital goods  | 142.09             | 88.37            | 60.8   |
| 4                                | Consumer Durables  | 159.98             | 75.18            | 112.8  |
| 5                                | Consumer Non-Durables  | 142.11             | 137.71           | 3.2  |

\* Provisional data \*\*Revised data

Note: The indices are rounded up to two decimal digits when published and percentage changes up to one decimal digit when published.



**Table 4. Monthly rate of change of the seasonally adjusted Industrial Production Index**

**Base year: 2015=100.0**

| Code                             | Division   | September<br>2024 | August<br>2024 | Rate of change (%)<br>Sept. 2024 /August 2024 |
|----------------------------------|--|-------------------|----------------|---|
| <b>OVERALL INDEX</b>             |  | <b>124.15</b>     | <b>126.81</b>  | <b>-2.1</b>                                   |
| <b>B</b>                         | <b>MINING AND QUARRYING</b>  | <b>99.06</b>      | <b>95.39</b>   | <b>3.8</b>                                    |
| <b>05-06-09</b>                  | Mining of coal and lignite – Extraction of crude petroleum and natural gas – Mining support service activities | -                 | -              | -   |
| <b>07</b>                        | Mining of metal ores   | 134.03            | 124.58         | 7.6   |
| <b>08</b>                        | Other mining and quarrying   | 99.62             | 98.19          | 1.5   |
| <b>C</b>                         | <b>MANUFACTURING</b>   | <b>131.94</b>     | <b>131.70</b>  | <b>0.2</b>                                    |
| <b>10</b>                        | Food   | 121.87            | 123.34         | -1.2  |
| <b>11</b>                        | Beverages  | 112.69            | 109.17         | 3.2   |
| <b>12</b>                        | Tobacco products   | 160.10            | 147.83         | 8.3   |
| <b>13</b>                        | Textiles   | 111.29            | 106.25         | 4.7   |
| <b>14</b>                        | Wearing apparel  | 63.06             | 64.09          | -1.6  |
| <b>15</b>                        | Leather and related products   | 103.09            | 88.85          | 16.0  |
| <b>16</b>                        | Wood and products of wood and cork, except furniture   | 97.41             | 91.33          | 6.6   |
| <b>17</b>                        | Paper and paper products   | 119.28            | 113.80         | 4.8   |
| <b>18</b>                        | Printing and reproduction of recorded products   | 160.67            | 139.84         | 14.9  |
| <b>19</b>                        | Coke and refined petroleum products  | 103.55            | 117.76         | -12.1   |
| <b>20</b>                        | Chemicals and chemical products  | 133.12            | 124.86         | 6.6   |
| <b>21</b>                        | Basic pharmaceutical products and pharmaceutical preparations  | 256.67            | 309.33         | -17.0   |
| <b>22</b>                        | Rubber and plastic products  | 131.46            | 124.90         | 5.2   |
| <b>23</b>                        | Other non-metallic mineral products  | 140.03            | 135.33         | 3.5   |
| <b>24</b>                        | Basic metals   | 134.71            | 133.98         | 0.5   |
| <b>25</b>                        | Fabricated metal products, except machinery and equipment  | 141.29            | 139.95         | 1.0   |
| <b>26</b>                        | Computers, electronic and optical products   | 262.51            | 199.07         | 31.9  |
| <b>27</b>                        | Electrical equipment   | 154.33            | 146.11         | 5.6   |
| <b>28</b>                        | Machinery and equipment n. e. c.   | 128.84            | 126.35         | 2.0   |
| <b>29</b>                        | Motor vehicles, trailers and semi-trailers   | 170.96            | 128.02         | 33.5  |
| <b>30</b>                        | Other transport equipment  | 63.94             | 63.25          | 1.1   |
| <b>31</b>                        | Furniture  | 146.78            | 128.45         | 14.3  |
| <b>32</b>                        | Other manufacturing  | 158.53            | 139.27         | 13.8  |
| <b>33</b>                        | Repair and installation of machinery and equipment   | 114.51            | 101.32         | 13.0  |
| <b>D</b>                         | <b>ELECTRICITY SUPPLY</b>  | <b>103.40</b>     | <b>114.53</b>  | <b>-9.7</b>                                   |
| <b>35</b>                        | Electricity supply   | 103.40            | 114.53         | -9.7  |
| <b>E</b>                         | <b>WATER SUPPLY</b>  | <b>99.53</b>      | <b>100.88</b>  | <b>-1.3</b>                                   |
| <b>36</b>                        | Water collection, treatment and supply   | 99.53             | 100.88         | -1.3  |
| <b>MAIN INDUSTRIAL GROUPINGS</b> |  |                   |                |   |
| <b>1</b>                         | Energy   | 103.67            | 113.34         | -8.5  |
| <b>2</b>                         | Intermediate goods   | 126.94            | 124.25         | 2.2   |
| <b>3</b>                         | Capital goods  | 144.52            | 134.07         | 7.8   |
| <b>4</b>                         | Consumer Durables  | 152.75            | 129.84         | 17.6  |
| <b>5</b>                         | Consumer Non-Durables  | 139.91            | 142.99         | -2.2  |

**Notes:**

1. The indices are rounded up to two decimal digits when published and percentage changes up to one decimal digit when published.
2. The whole time-series with seasonally adjusted indices is recalculated every time a new observation is added in the time-series.
3. The composed index of divisions 05-06-09 is not seasonally adjusted.

**Table 5. Evolution of the Overall Industrial Production Index**  
*(Working day adjusted data, according to the real number of working days)*

Base year: 2015=100.0

| Year and month        | Overall Index | Monthly rate of change (%) | Annual rate of change (%) | 12-month average index (moving average) | Rate of change of the 12-month average index (%) |
|-----------------------|---------------|----------------------------|---------------------------|---|--|
| <b>2022:</b> 1        | 104.88        | -12.1                      | -0.7                      | 115.94                                  | 9.7  |
| 2                     | 114.17        | 8.9                        | 5.8                       | 116.46                                  | 9.9  |
| 3                     | 124.73        | 9.2                        | 8.8                       | 117.30                                  | 10.1   |
| 4                     | 112.63        | -9.7                       | -4.6                      | 116.85                                  | 7.9  |
| 5                     | 118.11        | 4.9                        | 4.3                       | 117.25                                  | 7.1  |
| 6                     | 127.84        | 8.2                        | 9.4                       | 118.17                                  | 7.1  |
| 7                     | 136.86        | 7.1                        | 6.9                       | 118.90                                  | 7.0  |
| 8                     | 116.79        | -14.7                      | 5.1                       | 119.38                                  | 6.6  |
| 9                     | 121.10        | 3.7                        | -1.2                      | 119.25                                  | 5.6  |
| 10                    | 114.71        | -5.3                       | -2.8                      | 118.98                                  | 4.0  |
| 11                    | 115.41        | 0.6                        | -1.0                      | 118.88                                  | 3.3  |
| 12                    | 117.96        | 2.2                        | -1.2                      | 118.77                                  | 2.4  |
| <b>Annual average</b> | <b>118.77</b> |                            |                           |   |  |
| <b>2023:</b> 1        | 105.63        | -10.5                      | 0.7                       | 118.83                                  | 2.5  |
| 2                     | 120.18        | 13.8                       | 5.3                       | 119.33                                  | 2.5  |
| 3                     | 125.66        | 4.6                        | 0.7                       | 119.41                                  | 1.8  |
| 4                     | 117.60        | -6.4                       | 4.4                       | 119.82                                  | 2.5  |
| 5                     | 120.86        | 2.8                        | 2.3                       | 120.05                                  | 2.4  |
| 6                     | 124.05        | 2.6                        | -3.0                      | 119.73                                  | 1.3  |
| 7                     | 134.56        | 8.5                        | -1.7                      | 119.54                                  | 0.5  |
| 8                     | 116.61        | -13.3                      | -0.2                      | 119.53                                  | 0.1  |
| 9                     | 123.27        | 5.7                        | 1.8                       | 119.71                                  | 0.4  |
| 10                    | 126.57        | 2.7                        | 10.3                      | 120.70                                  | 1.4  |
| 11                    | 119.19        | -5.8                       | 3.3                       | 121.01                                  | 1.8  |
| 12                    | 123.30        | 3.4                        | 4.5                       | 121.46                                  | 2.3  |
| <b>Annual average</b> | <b>121.46</b> |                            |                           |   |  |
| <b>2024*:</b> 1       | 116.45        | -5.6                       | 10.2                      | 122.36                                  | 3.0  |
| 2                     | 122.62        | 5.3                        | 2.0                       | 122.56                                  | 2.7  |
| 3                     | 125.00        | 1.9                        | -0.5                      | 122.51                                  | 2.6  |
| 4                     | 131.96        | 5.6                        | 12.2                      | 123.70                                  | 3.2  |
| 5                     | 129.18        | -2.1                       | 6.9                       | 124.40                                  | 3.6  |
| 6                     | 136.13        | 5.4                        | 9.7                       | 125.40                                  | 4.7  |
| 7                     | 147.86        | 8.6                        | 9.9                       | 126.51                                  | 5.8  |
| 8                     | 120.47        | -18.5                      | 3.3                       | 126.83                                  | 6.1  |
| 9                     | 126.29        | 4.8                        | 2.5                       | 127.08                                  | 6.2  |

\* Provisional data

Note: The indices are rounded up to two decimal digits when published and percentage changes up to one decimal digit when published.

**Table 6. Monthly evolution of the seasonally adjusted Overall Industrial Production Index and Main Industrial Groupings**

Base year: 2015=100.0

| Year and month        | Overall Index |                            | Energy |                            | Intermediate goods |                            | Capital goods |                            | Consumer durables |                            | Consumer non-durables |                            |      |
|-----------------------|---------------|----------------------------|--------|----------------------------|--------------------|----------------------------|---------------|----------------------------|-------------------|----------------------------|-----------------------|----------------------------|------|
|                       | Index         | Monthly rate of change (%) | Index  | Monthly rate of change (%) | Index              | Monthly rate of change (%) | Index         | Monthly rate of change (%) | Index             | Monthly rate of change (%) | Index                 | Monthly rate of change (%) |      |
| <b>2022:</b>          | 1             | 114.26                     | -4.9   | 106.64                     | -6.3               | 118.67                     | -3.9          | 118.63                     | -7.9              | 119.08                     | 0.4                   | 118.66                     | -3.5 |
|                       | 2             | 116.87                     | 2.3    | 102.67                     | -3.7               | 122.68                     | 3.4           | 129.80                     | 9.4               | 125.71                     | 5.6                   | 125.65                     | 5.9  |
|                       | 3             | 123.47                     | 5.6    | 120.93                     | 17.8               | 119.29                     | -2.8          | 129.59                     | -0.2              | 137.39                     | 9.3                   | 127.46                     | 1.4  |
|                       | 4             | 113.86                     | -7.8   | 99.13                      | -18.0              | 118.12                     | -1.0          | 129.46                     | -0.1              | 134.62                     | -2.0                  | 123.20                     | -3.3 |
|                       | 5             | 117.50                     | 3.2    | 104.12                     | 5.0                | 120.27                     | 1.8           | 135.97                     | 5.0               | 133.18                     | -1.1                  | 125.85                     | 2.1  |
|                       | 6             | 122.09                     | 3.9    | 112.19                     | 7.8                | 121.82                     | 1.3           | 139.86                     | 2.9               | 138.29                     | 3.8                   | 128.76                     | 2.3  |
|                       | 7             | 122.40                     | 0.3    | 116.95                     | 4.2                | 119.24                     | -2.1          | 141.52                     | 1.2               | 131.68                     | -4.8                  | 125.95                     | -2.2 |
|                       | 8             | 122.51                     | 0.1    | 115.58                     | -1.2               | 121.28                     | 1.7           | 138.69                     | -2.0              | 158.58                     | 20.4                  | 125.76                     | -0.2 |
|                       | 9             | 118.11                     | -3.6   | 100.13                     | -13.4              | 121.13                     | -0.1          | 141.49                     | 2.0               | 137.05                     | -13.6                 | 130.38                     | 3.7  |
|                       | 10            | 116.05                     | -1.7   | 99.63                      | -0.5               | 116.49                     | -3.8          | 137.84                     | -2.6              | 148.53                     | 8.4                   | 128.16                     | -1.7 |
|                       | 11            | 118.64                     | 2.2    | 101.65                     | 2.0                | 117.71                     | 1.0           | 136.07                     | -1.3              | 143.17                     | -3.6                  | 134.06                     | 4.6  |
|                       | 12            | 118.71                     | 0.1    | 101.44                     | -0.2               | 120.38                     | 2.3           | 134.28                     | -1.3              | 152.91                     | 6.8                   | 132.45                     | -1.2 |
| <b>Annual average</b> |               | <b>118.71</b>              |        | <b>106.75</b>              |                    | <b>119.76</b>              |               | <b>134.43</b>              |                   | <b>138.35</b>              |                       | <b>127.19</b>              |      |
| <b>2023:</b>          | 1             | 116.34                     | -2.0   | 91.70                      | -9.6               | 120.53                     | 0.1           | 143.19                     | 6.6               | 136.60                     | -10.7                 | 134.74                     | 1.7  |
|                       | 2             | 122.84                     | 5.6    | 108.71                     | 18.6               | 118.18                     | -1.9          | 143.79                     | 0.4               | 145.15                     | 6.3                   | 136.86                     | 1.6  |
|                       | 3             | 123.75                     | 0.7    | 106.36                     | -2.2               | 124.05                     | 5.0           | 142.54                     | -0.9              | 142.67                     | -1.7                  | 138.61                     | 1.3  |
|                       | 4             | 119.11                     | -3.8   | 107.59                     | 1.2                | 118.17                     | -4.7          | 131.62                     | -7.7              | 140.62                     | -1.4                  | 129.37                     | -6.7 |
|                       | 5             | 119.76                     | 0.5    | 99.31                      | -7.7               | 119.91                     | 1.5           | 146.76                     | 11.5              | 141.30                     | 0.5                   | 136.14                     | 5.2  |
|                       | 6             | 118.32                     | -1.2   | 95.68                      | -3.7               | 119.71                     | -0.2          | 142.70                     | -2.8              | 148.05                     | 4.8                   | 136.66                     | 0.4  |
|                       | 7             | 120.31                     | 1.7    | 108.41                     | 13.3               | 115.80                     | -3.3          | 132.23                     | -7.3              | 144.82                     | -2.2                  | 133.81                     | -2.1 |
|                       | 8             | 123.03                     | 2.3    | 109.81                     | 1.3                | 119.30                     | 3.0           | 145.89                     | 10.3              | 145.33                     | 0.4                   | 134.72                     | 0.7  |
|                       | 9             | 120.93                     | -1.7   | 110.90                     | 1.0                | 114.22                     | -4.3          | 138.03                     | -5.4              | 154.64                     | 6.4                   | 132.04                     | -2.0 |
|                       | 10            | 127.75                     | 5.6    | 112.29                     | 1.3                | 123.96                     | 8.5           | 145.30                     | 5.3               | 155.60                     | 0.6                   | 143.33                     | 8.6  |
|                       | 11            | 122.42                     | -4.2   | 105.35                     | -6.2               | 121.87                     | -1.7          | 146.91                     | 1.1               | 164.05                     | 5.4                   | 134.91                     | -5.9 |
|                       | 12            | 123.49                     | 0.9    | 103.05                     | -2.2               | 127.08                     | 4.3           | 151.68                     | 3.2               | 158.40                     | -3.4                  | 136.22                     | 1.0  |
| <b>Annual average</b> |               | <b>121.50</b>              |        | <b>104.93</b>              |                    | <b>120.23</b>              |               | <b>142.55</b>              |                   | <b>148.10</b>              |                       | <b>135.62</b>              |      |
| <b>2024:</b>          | 1             | 127.25                     | 3.0    | 109.52                     | 6.3                | 125.88                     | -0.9          | 142.30                     | -6.2              | 172.48                     | 8.9                   | 143.48                     | 5.3  |
|                       | 2             | 125.34                     | -1.5   | 106.90                     | -2.4               | 130.00                     | 3.3           | 141.73                     | -0.4              | 158.78                     | -7.9                  | 137.97                     | -3.8 |
|                       | 3             | 123.37                     | -1.6   | 108.26                     | 1.3                | 123.15                     | -5.3          | 142.87                     | 0.8               | 165.24                     | 4.1                   | 134.55                     | -2.5 |
|                       | 4             | 133.24                     | 8.0    | 121.17                     | 11.9               | 128.58                     | 4.4           | 148.33                     | 3.8               | 165.14                     | -0.1                  | 145.85                     | 8.4  |
|                       | 5             | 128.43                     | -3.6   | 116.40                     | -3.9               | 122.18                     | -5.0          | 138.97                     | -6.3              | 155.80                     | -5.7                  | 143.66                     | -1.5 |
|                       | 6             | 130.30                     | 1.5    | 124.52                     | 7.0                | 121.86                     | -0.3          | 140.87                     | 1.4               | 146.13                     | -6.2                  | 140.24                     | -2.4 |
|                       | 7             | 131.95                     | 1.3    | 120.33                     | -3.4               | 127.22                     | 4.4           | 146.27                     | 3.8               | 158.01                     | 8.1                   | 144.56                     | 3.1  |
|                       | 8             | 126.81                     | -3.9   | 113.34                     | -5.8               | 124.25                     | -2.3          | 134.07                     | -8.3              | 129.84                     | -17.8                 | 142.99                     | -1.1 |
|                       | 9             | 124.15                     | -2.1   | 103.67                     | -8.5               | 126.94                     | 2.2           | 144.52                     | 7.8               | 152.75                     | 17.6                  | 139.91                     | -2.2 |

- Notes:
1. The indices are rounded up to two decimal digits when published and percentage changes up to one decimal digit when published.
  2. The whole time-series with seasonally adjusted indices is recalculated every time a new observation is added in the time-series.

## METHODOLOGICAL NOTES

|  |   |
|--|---|
| <b>Generally</b>                       | The Industrial Production Index (IPI) in Greece has been compiled by the Hellenic Statistical Authority (ELSTAT) from 1959 onwards.   |
| <b>Purpose of the index</b>            | The objective of the index is to compare the magnitude (volume) of the output in the current month in the mining and quarrying, manufacturing, electricity and water supply divisions with the corresponding output of a given fixed period, which is considered as base period. The Industrial Production Index shows the evolution of the value added of the production factors cost, at constant prices.   |
| <b>Legal framework</b>                 | The compilation of the IPI is based on the framework of the implementation of Council Regulation (EC) No 1165/1998 concerning short-term statistics (STS-R). Furthermore, the IPI is governed by Regulation (EC) No 1893/2006 of the European Parliament and of the Council, by Commission Regulation (EC) No 656/2007, by Council Regulation (EC) No 451/2008, by Regulation (EU) No 2019/2152 of the European Parliament and of the Council on European business statistics, as well as Commission Implementing Regulation (EU) No 2020/1197 laying down technical specifications and arrangements pursuant to Regulation (EU) No 2019/2152.  |
| <b>Reference period</b>                | Month.  |
| <b>Base year</b>                       | 2015=100.0.   |
| <b>Revision</b>                        | The IPI is a fixed base index. The Industrial Production Index was currently revised with new base year 2015 (2015=100.0) according to the provisions of Council Regulation No 1165/1998 concerning short-term statistics. Short-term indices are revised every five (5) years, particularly in calendar years ending in 0 or 5.  |
| <b>Statistical classifications</b>     | At the level of branches of economic activities, the statistical classification of economic activities NACE Rev.2 of EU was used (Regulation No 1893/2006), while at the level of main industrial groupings, the allocation of two-digit and three-digit NACE Rev. 2 headings to categories of aggregate classification was used, in accordance with Council Regulation No 656/2007. At product level, the statistical classification CPA 2008 of EU was used, according to Council Regulation No 451/2008.   |
| <b>Geographical coverage</b>           | The index covers the whole Country.   |
| <b>Coverage of economic activities</b> | The index covers all the sections of industry, the main industrial groups, as well as all levels of economic activity.  |
| <b>Statistical survey</b>              | The data are collected from a sample of 1,263 enterprises. The survey covers 325 products and the measurement of the surveyed products is made in terms of output quantities or in terms of production value or turnover, according to the specific features in each branch of economic activity.   |
| <b>Seasonal adjustment</b>             | Seasonal adjustment is the procedure followed to remove the impact of seasonality on the time-series (i.e. the impact of monthly effects, e.g. holidays, tourist period etc.), in order to improve comparability over time. The method applied is TRAMO-SEATS with the use of JDemetra+ 2.0.0.<br>For the seasonal adjustment of the Industrial Production Index at 2-digit level of NACE Rev.2, at section level (B – Mining and Quarrying, C – Manufacturing, D – Electricity and E – Water Supply) and for the Main Industrial Groupings (MIGs), the direct approach is applied, namely each time-series is seasonally adjusted independently. For the overall Industrial Production Index, the indirect approach is applied, with the seasonally adjusted IPI being computed by aggregating the seasonally adjusted MIGs using appropriate weights. |
| <b>Publication of data</b>             | The revised IPI with the new base year 2015 (2015=100.0) is released since July 2019, with May 2019 as the first reference month. Data with base year 2015=100.0 are available from January 2000 onwards.   |
| <b>References</b>                      | More information about the methodology concerning the compilation and calculation of the index and the time series are available on the website of the Hellenic Statistical Authority (ELSTAT) ( <a href="http://www.statistics.gr/en/statistics/-/publication/DKT21/-">http://www.statistics.gr/en/statistics/-/publication/DKT21/-</a> ).   |