



## INPUT AND OUTPUT PRICE INDICES IN AGRICULTURE – LIVESTOCK: APRIL 2024

The evolution of the Input and Output Price Indices with base year 2020=100.0 for April 2024, according to provisional data, is as follows:

The Output Price Index in Agriculture – Livestock (excluding subsidies) increased by 15.7% in April 2024, compared with April 2023. The corresponding index in April 2023 had recorded an increase of 9.8%, compared with April 2022 (Table 1, Graph 1).

The increase of 15.7% in the Output Price Index in April 2024 compared with April 2023 (Table 1), is on account of: a) increase 23.7% of the price index in crop output group and mainly on the rate of change of the groups olive oil and fruits, and b) increase 1.3% of the price index in animal output group.

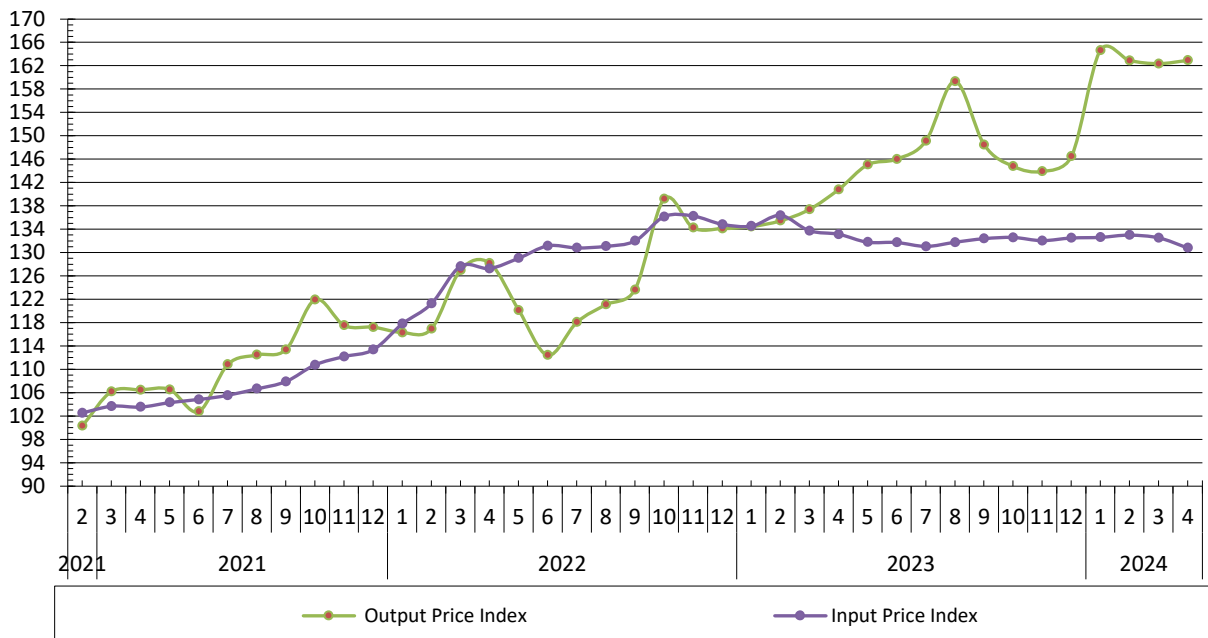
The Output Price Index in April 2024 increased by 0.4%, in comparison with March 2024 (Table 2).

The twelve-month weighted average output index from May 2023 to April 2024 increased by 17.2%, compared with the corresponding index of the period from May 2022 to April 2023 (Table 3).

The Input Price Index in Agriculture – Livestock decreased by 1.8% in April 2024, compared with April 2023. The corresponding index in April 2023 had recorded an increase of 4.6%, compared with April 2022 (Table 4, Graph 1).

The decrease of 1.8% in the Input Price Index in April 2024 compared with April 2023 (Table 4) is on account of: a) decrease 3.2% of the price index in goods and services currently consumed in agriculture group and mainly on the rate of change of the group animal feeding stuffs and b) increase 2.9% of the price index in goods and services contributing to agricultural investment.

**Graph 1. Evolution of Input and Output Price Indices in Agriculture – Livestock (2020=100.0)**



**Information on methodological issues:**

Agriculture, Livestock, Fishery and Environment Statistics Division  
Agricultural Input-Output & Indices Section  
Maria Oikonomakou  
Tel: +30 213 135 2053  
E-mail: [m.oikonomakou@statistics.gr](mailto:m.oikonomakou@statistics.gr)

**Information for data provision:**

Tel: +30 213 135 2022, 2308, 2310  
E-mail: [data.dissem@statistics.gr](mailto:data.dissem@statistics.gr)

The Input Price Index in April 2024, decreased by 1.3%, in comparison with March 2024 (Table 5).

The twelve-month average input index from May 2023 to April 2024, decreased by 0.9% compared with the corresponding index of the period from May 2022 to April 2023 (Table 6).

**Table 1. Annual rates of change of the Output Price Indices in Agriculture – Livestock**

**Base year: 2020=100.0**

| Code   | Main groups                           | Monthly weighting coefficient (%) | April |       |       | Change (%) |           |
|--------|---------------------------------------|-----------------------------------|-------|-------|-------|------------|-----------|
|        |                                       |                                   | 2024  | 2023  | 2022  | 2024/2023  | 2023/2022 |
| 140000 | AGRICULTURAL GOODS OUTPUT             | 7.46                              | 162.9 | 140.8 | 128.2 | 15.7       | 9.8       |
| 100000 | CROP OUTPUT                           | 4.91                              | 169.9 | 137.3 | 131.5 | 23.7       | 4.4       |
| 010000 | Cereals (including seeds)             | 0.08                              | 128.9 | 129.4 | 119.4 | -0.4       | 8.3       |
| 020000 | Industrial crops                      | 0.14                              | 100.7 | 100.5 | 99.1  | 0.2        | 1.4       |
| 030000 | Forage plants                         | 0.45                              | 155.0 | 146.7 | 138.8 | 5.7        | 5.6       |
| 040000 | Vegetables and horticultural Products | 1.43                              | 138.0 | 133.6 | 127.1 | 3.4        | 5.1       |
| 050000 | Potatoes (including seeds)            | 0.31                              | 152.4 | 138.3 | 133.3 | 10.2       | 3.7       |
| 060000 | Fruits                                | 1.85                              | 153.1 | 120.9 | 134.0 | 26.7       | -9.8      |
| 070000 | Wine (incl. must)                     | 0.02                              | 115.0 | 108.3 | 101.1 | 6.1        | 7.2       |
| 080000 | Olive oil                             | 0.56                              | 358.8 | 206.8 | 141.3 | 73.5       | 46.4      |
| 090000 | Other crop products                   | 0.07                              | 115.0 | 114.0 | 104.4 | 0.8        | 9.2       |
| 130000 | ANIMAL OUTPUT                         | 2.55                              | 149.5 | 147.6 | 121.9 | 1.3        | 21.1      |
| 110000 | Animals                               | 0.96                              | 144.3 | 140.1 | 124.9 | 3.0        | 12.2      |
| 120000 | Animal products                       | 1.58                              | 152.7 | 152.2 | 120.0 | 0.3        | 26.8      |

*Note: The indices and the percentage changes are published rounded up to one decimal figure.*

**Table 2. Monthly rates of change of the Output Price Indices in Agriculture – Livestock**

**Base year: 2020=100.0**

| Code   | Main groups                           | Weighting coefficient (%) | April 2024 | March 2024 | Change (%) | April 2023 | March 2023 | Change (%) |
|--------|---------------------------------------|---------------------------|------------|------------|------------|------------|------------|------------|
| 140000 | AGRICULTURAL GOODS OUTPUT             | 100.00                    | 162.9      | 162.4      | 0.4        | 140.8      | 137.4      | 2.5        |
| 100000 | CROP OUTPUT                           | 79.49                     | 169.9      | 170.7      | -0.5       | 137.3      | 133.5      | 2.9        |
| 010000 | Cereals (including seeds)             | 6.84                      | 128.9      | 129.1      | -0.2       | 129.4      | 129.5      | -0.1       |
| 020000 | Industrial crops                      | 6.07                      | 100.7      | 100.7      | 0.0        | 100.5      | 100.4      | 0.1        |
| 030000 | Forage plants                         | 6.22                      | 155.0      | 157.2      | -1.4       | 146.7      | 145.8      | 0.6        |
| 040000 | Vegetables and horticultural products | 18.14                     | 138.0      | 140.2      | -1.5       | 133.6      | 132.9      | 0.5        |
| 050000 | Potatoes (including seeds)            | 2.15                      | 152.4      | 154.8      | -1.5       | 138.3      | 136.0      | 1.7        |
| 060000 | Fruits                                | 32.19                     | 153.1      | 147.6      | 3.8        | 120.9      | 111.9      | 8.0        |
| 070000 | Wine (incl. must)                     | 0.23                      | 115.0      | 112.5      | 2.2        | 108.3      | 106.6      | 1.7        |
| 080000 | Olive oil                             | 6.75                      | 358.8      | 363.5      | -1.3       | 206.8      | 202.3      | 2.3        |
| 090000 | Other crop products                   | 0.90                      | 115.0      | 114.8      | 0.1        | 114.0      | 113.6      | 0.4        |
| 130000 | ANIMAL OUTPUT                         | 20.51                     | 149.5      | 146.4      | 2.2        | 147.6      | 144.9      | 1.9        |
| 110000 | Animals                               | 8.23                      | 144.3      | 132.7      | 8.8        | 140.1      | 129.8      | 8.0        |
| 120000 | Animal products                       | 12.28                     | 152.7      | 153.2      | -0.3       | 152.2      | 152.5      | -0.2       |

*Note: The indices and the percentage changes are published rounded up to one decimal figure.*

**Table 3. Evolution of the Output Price Index in Agriculture – Livestock**

Base year: 2020=100.0

| Year and month        |    | Overall Index | Monthly rates of change (%) | Annual rates of change (%) | 12-month weighted average index (moving average) | 12-month weighted moving average rates of change (%) |
|-----------------------|----|---------------|-----------------------------|----------------------------|--|--|
| <b>2022:</b>          | 1  | 116.3         | -0.8                        | 17.3                       | 111.9  | 12.1   |
|                       | 2  | 116.9         | 0.5                         | 16.5                       | 113.0  | 13.2   |
|                       | 3  | 127.0         | 8.6                         | 19.6                       | 114.4  | 14.3   |
|                       | 4  | 128.2         | 0.9                         | 20.4                       | 116.0  | 15.7   |
|                       | 5  | 120.1         | -6.3                        | 12.8                       | 117.1  | 16.3   |
|                       | 6  | 112.4         | -6.4                        | 9.4                        | 117.9  | 16.6   |
|                       | 7  | 118.1         | 5.0                         | 6.5                        | 118.4  | 16.0   |
|                       | 8  | 121.1         | 2.5                         | 7.7                        | 119.1  | 15.3   |
|                       | 9  | 123.6         | 2.1                         | 9.0                        | 120.2  | 14.6   |
|                       | 10 | 139.2         | 12.6                        | 14.1                       | 122.4  | 13.7   |
|                       | 11 | 134.3         | -3.5                        | 14.2                       | 124.0  | 13.4   |
|                       | 12 | 134.1         | -0.1                        | 14.4                       | 125.6  | 13.2   |
| <b>Annual Average</b> |    | <b>125.6</b>  |                             |                            |  |  |
| <b>2023:</b>          | 1  | 134.5         | 0.2                         | 15.6                       | 126.7  | 13.1   |
|                       | 2  | 135.5         | 0.8                         | 15.9                       | 127.8  | 13.1   |
|                       | 3  | 137.4         | 1.4                         | 8.2                        | 128.5  | 12.3   |
|                       | 4  | 140.8         | 2.5                         | 9.8                        | 129.5  | 11.6   |
|                       | 5  | 145.1         | 3.0                         | 20.8                       | 131.4  | 12.2   |
|                       | 6  | 146.0         | 0.6                         | 29.9                       | 134.2  | 13.8   |
|                       | 7  | 149.1         | 2.1                         | 26.3                       | 136.5  | 15.3   |
|                       | 8  | 159.4         | 6.9                         | 31.6                       | 139.5  | 17.1   |
|                       | 9  | 148.5         | -6.8                        | 20.1                       | 142.0  | 18.2   |
|                       | 10 | 144.8         | -2.5                        | 4.0                        | 142.8  | 16.6   |
|                       | 11 | 143.9         | -0.6                        | 7.2                        | 143.7  | 15.9   |
|                       | 12 | 146.5         | 1.8                         | 9.2                        | 144.8  | 15.3   |
| <b>Annual Average</b> |    | <b>144.8</b>  |                             |                            |  |  |
| <b>2024:</b>          | 1  | 164.7         | 12.4                        | 22.5                       | 146.6  | 15.8   |
|                       | 2  | 162.9         | -1.1                        | 20.2                       | 148.3  | 16.0   |
|                       | 3  | 162.4         | -0.3                        | 18.2                       | 150.0  | 16.7   |
|                       | 4  | 162.9         | 0.4                         | 15.7                       | 151.7  | 17.2   |
|                       | 5  |               |                             |                            |  |  |
|                       | 6  |               |                             |                            |  |  |
|                       | 7  |               |                             |                            |  |  |
|                       | 8  |               |                             |                            |  |  |
|                       | 9  |               |                             |                            |  |  |
|                       | 10 |               |                             |                            |  |  |
|                       | 11 |               |                             |                            |  |  |
|                       | 12 |               |                             |                            |  |  |
| <b>Annual Average</b> |    |               |                             |                            |  |  |

Note: The indices and the percentage changes are published rounded up to one decimal figure.

**Table 4. Annual rates of change of the Input Price Indices in Agriculture – Livestock**

Base year: 2020=100.0

| Code   | Main groups  | Weighting coefficient (%) | April |       |       | Change (%) |           |
|--------|--|---------------------------|-------|-------|-------|------------|-----------|
|        |  |                           | 2024  | 2023  | 2022  | 2024/2023  | 2023/2022 |
| 220000 | INPUT TOTAL  | 100.00                    | 130.8 | 133.1 | 127.3 | -1.8       | 4.6       |
| 200000 | GOODS AND SERVICES CURRENTLY CONSUMED IN AGRICULTURE       | 73.50                     | 133.7 | 138.1 | 134.0 | -3.2       | 3.0       |
| 201000 | Seeds and planting stock                                   | 5.54                      | 115.4 | 115.5 | 107.8 | -0.1       | 7.1       |
| 202000 | Energy and lubricants                                      | 15.44                     | 144.7 | 147.4 | 162.3 | -1.9       | -9.2      |
| 203000 | Fertilizers and soil improvers                             | 5.14                      | 150.8 | 177.5 | 162.8 | -15.1      | 9.0       |
| 204000 | Plant protection products and pesticides                   | 3.96                      | 115.2 | 115.0 | 109.3 | 0.2        | 5.2       |
| 205000 | Veterinary expenses  | 0.54                      | 116.6 | 112.8 | 107.2 | 3.3        | 5.3       |
| 206000 | Animal feeding stuffs                                      | 34.07                     | 131.7 | 139.2 | 130.5 | -5.4       | 6.7       |
| 207000 | Maintenance of materials                                   | 3.44                      | 125.8 | 123.3 | 112.3 | 2.0        | 9.8       |
| 208000 | Maintenance of buildings                                   | 0.26                      | 132.3 | 129.6 | 116.4 | 2.1        | 11.3      |
| 209000 | Other goods and services                                   | 5.11                      | 137.4 | 117.8 | 109.0 | 16.6       | 8.1       |
| 210000 | GOODS AND SERVICES CONTRIBUTING TO AGRICULTURAL INVESTMENT | 26.50                     | 122.8 | 119.4 | 108.5 | 2.9        | 10.0      |
| 211000 | Materials  | 24.93                     | 122.8 | 119.5 | 108.4 | 2.8        | 10.3      |
| 211110 | Rotovators and other 2wheel equipment                      | 2.07                      | 138.1 | 135.3 | 111.8 | 2.1        | 21.1      |
| 211120 | Machinery and plant for cultivation                        | 3.64                      | 136.0 | 132.5 | 117.0 | 2.6        | 13.2      |
| 211130 | Machinery and plant for harvesting                         | 3.58                      | 107.0 | 106.1 | 102.8 | 0.8        | 3.2       |
| 211140 | Farm machinery and installations                           | 7.51                      | 122.6 | 121.2 | 109.8 | 1.1        | 10.4      |
| 211210 | Tractors   | 1.49                      | 120.6 | 116.7 | 106.4 | 3.4        | 9.6       |
| 211290 | Other vehicles   | 6.64                      | 120.2 | 113.4 | 104.6 | 6.0        | 8.5       |
| 212000 | Buildings  | 1.57                      | 122.5 | 117.8 | 110.2 | 4.0        | 6.8       |

Note: The indices and the percentage changes are published rounded up to one decimal figure.

**Table 5. Monthly rates of change of the Input Price Indices in Agriculture – Livestock**

Base year: 2020=100.0

| Code   | Main groups  | Weighting coefficient (%) | April 2024 | March 2024 | Change (%) | April 2023 | March 2023 | Change (%) |
|--------|--|---------------------------|------------|------------|------------|------------|------------|------------|
| 220000 | INPUT TOTAL  | 100.00                    | 130.8      | 132.5      | -1.3       | 133.1      | 133.7      | -0.4       |
| 200000 | GOODS AND SERVICES CURRENTLY CONSUMED IN AGRICULTURE       | 73.50                     | 133.7      | 136.1      | -1.8       | 138.1      | 139.1      | -0.8       |
| 201000 | Seeds and planting stock                                   | 5.54                      | 115.4      | 115.2      | 0.2        | 115.5      | 115.1      | 0.4        |
| 202000 | Energy and lubricants                                      | 15.44                     | 144.7      | 149.1      | -2.9       | 147.4      | 146.2      | 0.8        |
| 203000 | Fertilizers and soil improvers                             | 5.14                      | 150.8      | 152.7      | -1.3       | 177.5      | 181.0      | -1.9       |
| 204000 | Plant protection products and pesticides                   | 3.96                      | 115.2      | 115.9      | -0.6       | 115.0      | 114.6      | 0.4        |
| 205000 | Veterinary expenses  | 0.54                      | 116.6      | 116.5      | 0.1        | 112.8      | 112.6      | 0.2        |
| 206000 | Animal feeding stuffs                                      | 34.07                     | 131.7      | 134.6      | -2.1       | 139.2      | 141.8      | -1.8       |
| 207000 | Maintenance of materials                                   | 3.44                      | 125.8      | 125.5      | 0.2        | 123.3      | 122.2      | 0.9        |
| 208000 | Maintenance of buildings                                   | 0.26                      | 132.3      | 132.0      | 0.2        | 129.6      | 129.6      | 0.0        |
| 209000 | Other goods and services                                   | 5.11                      | 137.4      | 137.3      | 0.1        | 117.8      | 118.0      | -0.2       |
| 210000 | GOODS AND SERVICES CONTRIBUTING TO AGRICULTURAL INVESTMENT | 26.50                     | 122.8      | 122.8      | 0.1        | 119.4      | 118.7      | 0.6        |
| 211000 | Materials  | 24.93                     | 122.8      | 122.8      | 0.0        | 119.5      | 118.8      | 0.6        |
| 211110 | Rotovators and other 2wheel equipment                      | 2.07                      | 138.1      | 138.1      | 0.0        | 135.3      | 133.9      | 1.1        |
| 211120 | Machinery and plant for cultivation                        | 3.64                      | 136.0      | 136.0      | 0.0        | 132.5      | 131.5      | 0.7        |
| 211130 | Machinery and plant for harvesting                         | 3.58                      | 107.0      | 107.0      | 0.0        | 106.1      | 105.3      | 0.8        |
| 211140 | Farm machinery and installations                           | 7.51                      | 122.6      | 122.5      | 0.1        | 121.2      | 120.5      | 0.6        |
| 211210 | Tractors   | 1.49                      | 120.6      | 120.6      | 0.0        | 116.7      | 116.0      | 0.6        |
| 211290 | Other vehicles   | 6.64                      | 120.2      | 120.2      | 0.0        | 113.4      | 113.3      | 0.1        |
| 212000 | Buildings  | 1.57                      | 122.5      | 121.9      | 0.5        | 117.8      | 117.0      | 0.7        |

Note: The indices and the percentage changes are published rounded up to one decimal figure.

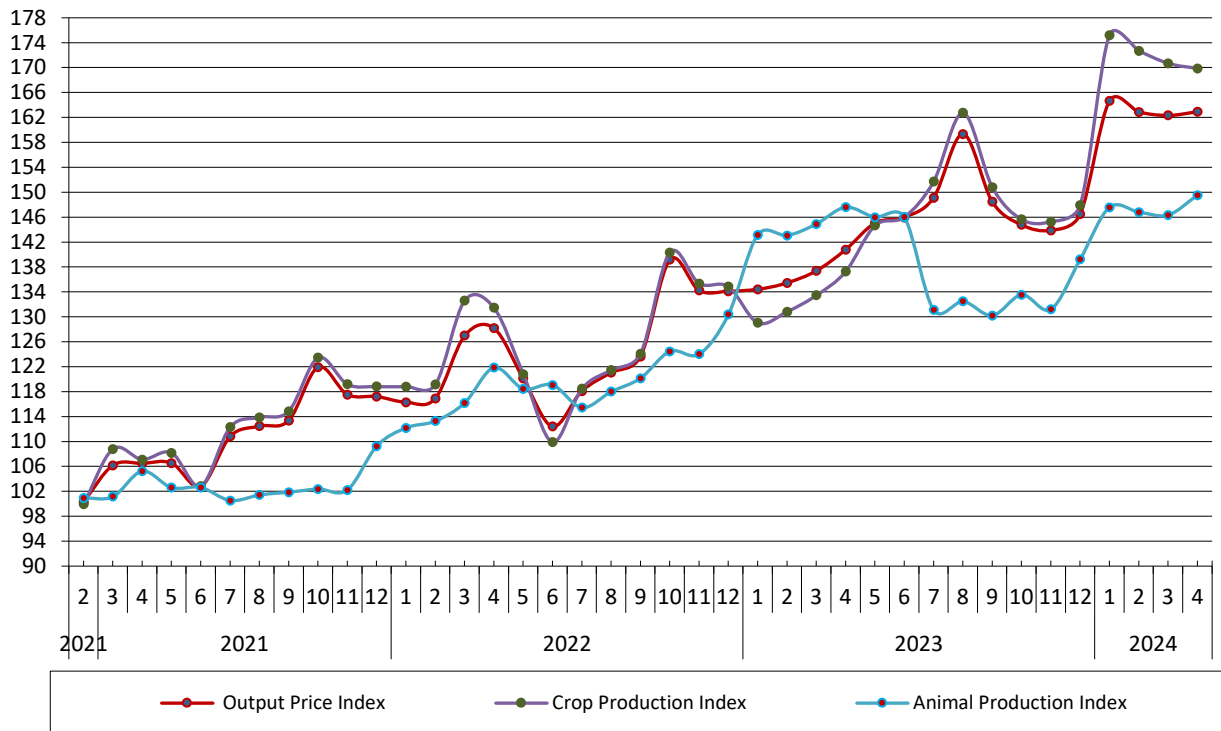
Table 6. Evolution of the Input Price Index in Agriculture – Livestock

Base year: 2020=100.0

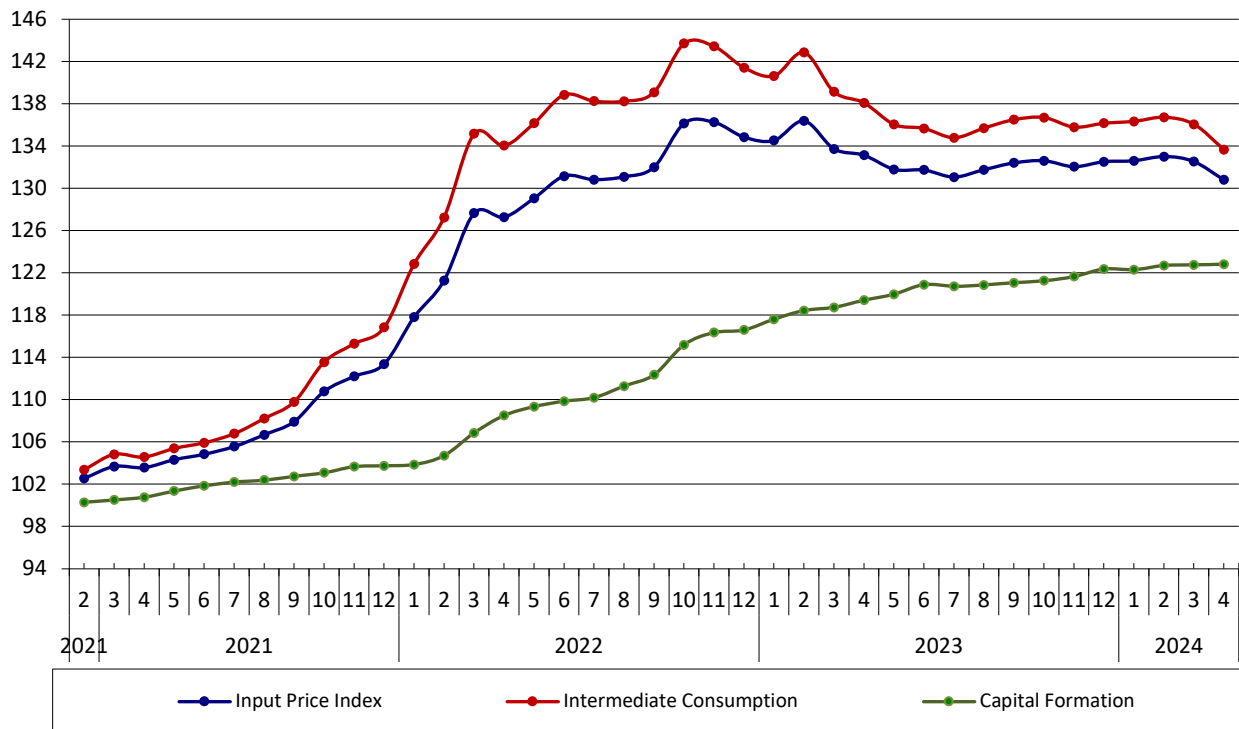
| Year and month        | Overall Index | Monthly rates of change (%) | Annual rates of change (%) | 12-month average index (moving average) | 12-month moving average rates of change (%) |
|-----------------------|---------------|-----------------------------|----------------------------|---|---|
| <b>2022:</b> 1        | 117.8         | 3.9                         | 16.0                       | 107.8                                   | 7.8   |
| 2                     | 121.3         | 2.9                         | 18.3                       | 109.3                                   | 9.3   |
| 3                     | 127.7         | 5.3                         | 23.1                       | 111.3                                   | 11.0  |
| 4                     | 127.3         | -0.3                        | 22.9                       | 113.3                                   | 12.6  |
| 5                     | 129.1         | 1.4                         | 23.7                       | 115.4                                   | 14.1  |
| 6                     | 131.2         | 1.6                         | 25.1                       | 117.6                                   | 15.8  |
| 7                     | 130.8         | -0.3                        | 23.9                       | 119.7                                   | 17.3  |
| 8                     | 131.1         | 0.2                         | 22.9                       | 121.7                                   | 18.6  |
| 9                     | 132.0         | 0.7                         | 22.3                       | 123.7                                   | 19.7  |
| 10                    | 136.2         | 3.1                         | 22.9                       | 125.8                                   | 20.6  |
| 11                    | 136.3         | 0.1                         | 21.4                       | 127.8                                   | 21.3  |
| 12                    | 134.8         | -1.0                        | 18.9                       | 129.6                                   | 21.8  |
| <b>Annual Average</b> | <b>129.6</b>  |                             |                            |   |   |
| <b>2023:</b> 1        | 134.5         | -0.2                        | 14.2                       | 131.0                                   | 21.6  |
| 2                     | 136.4         | 1.4                         | 12.5                       | 132.3                                   | 21.0  |
| 3                     | 133.7         | -1.9                        | 4.8                        | 132.8                                   | 19.3  |
| 4                     | 133.1         | -0.4                        | 4.6                        | 133.3                                   | 17.6  |
| 5                     | 131.8         | -1.0                        | 2.1                        | 133.5                                   | 15.7  |
| 6                     | 131.7         | 0.0                         | 0.4                        | 133.5                                   | 13.6  |
| 7                     | 131.1         | -0.5                        | 0.2                        | 133.6                                   | 11.6  |
| 8                     | 131.8         | 0.5                         | 0.5                        | 133.6                                   | 9.8   |
| 9                     | 132.4         | 0.5                         | 0.3                        | 133.6                                   | 8.0   |
| 10                    | 132.6         | 0.1                         | -2.6                       | 133.4                                   | 6.0   |
| 11                    | 132.0         | -0.4                        | -3.1                       | 133.0                                   | 4.0   |
| 12                    | 132.5         | 0.4                         | -1.7                       | 132.8                                   | 2.5   |
| <b>Annual Average</b> | <b>132.8</b>  |                             |                            |   |   |
| <b>2024:</b> 1        | 132.6         | 0.1                         | -1.4                       | 132.6                                   | 1.3   |
| 2                     | 133.0         | 0.3                         | -2.5                       | 132.4                                   | 0.1   |
| 3                     | 132.5         | -0.4                        | -0.9                       | 132.3                                   | -0.4  |
| 4                     | 130.8         | -1.3                        | -1.8                       | 132.1                                   | -0.9  |
| 5                     |               |                             |                            |   |   |
| 6                     |               |                             |                            |   |   |
| 7                     |               |                             |                            |   |   |
| 8                     |               |                             |                            |   |   |
| 9                     |               |                             |                            |   |   |
| 10                    |               |                             |                            |   |   |
| 11                    |               |                             |                            |   |   |
| 12                    |               |                             |                            |   |   |
| <b>Annual Average</b> |               |                             |                            |   |   |

Note: The indices and the percentage changes are published rounded up to one decimal figure.

**Graph 2. Evolution of the Output Price Index in Agriculture – Livestock and of the sub-indices of Crop and Animal Production (2020=100.0)**

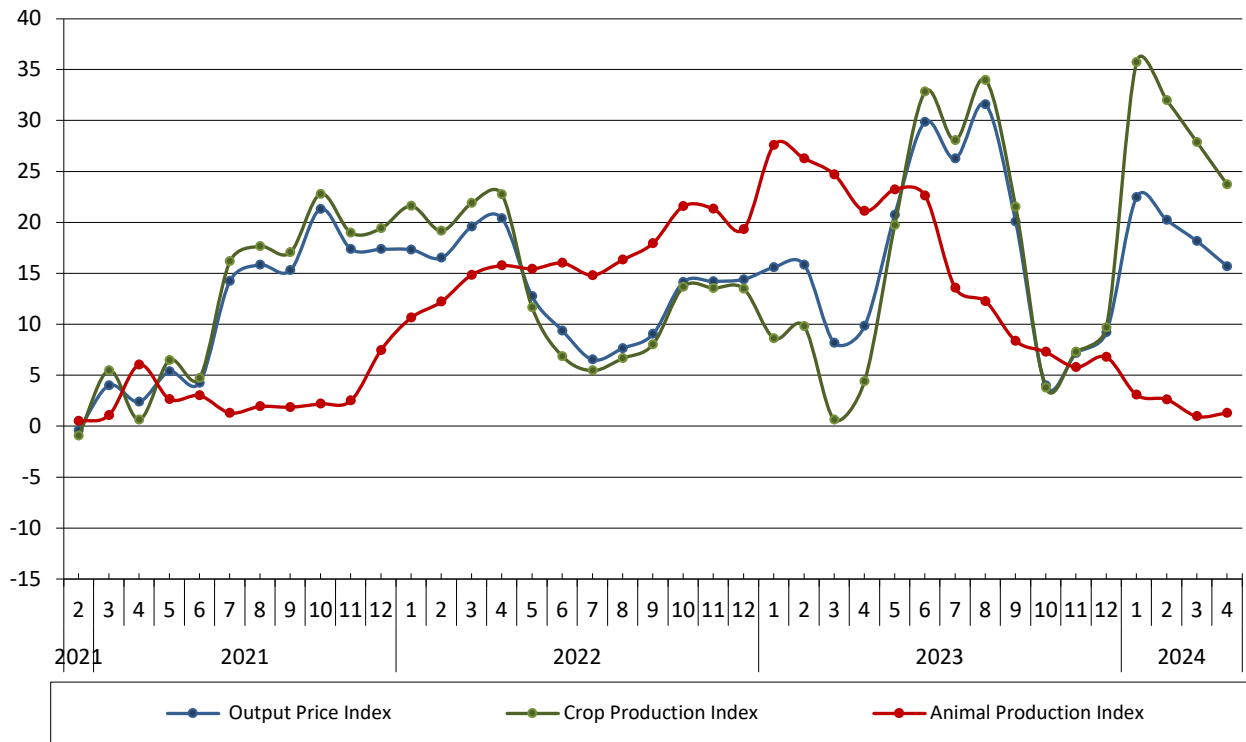


**Graph 3. Evolution of the Input Price Index in Agriculture – Livestock and of the sub-indices of Intermediate Consumption and Capital Formation (2020=100.0)**

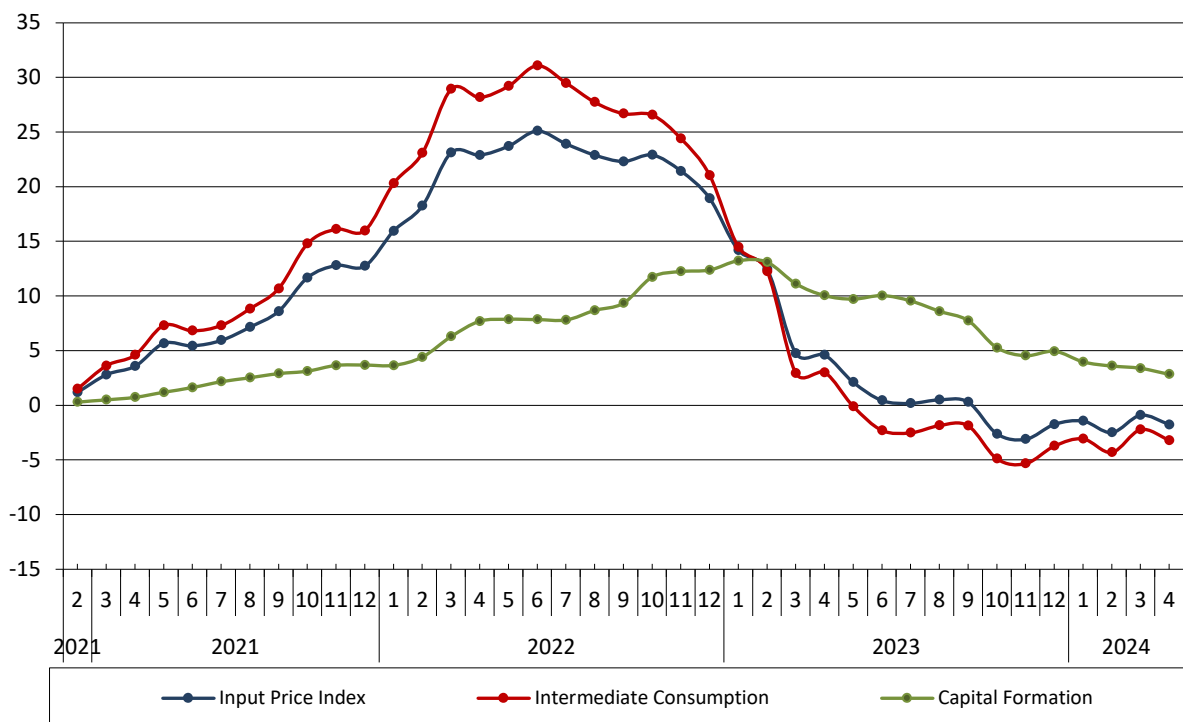




**Graph 4. Annual rates of change (%) of the Output Price Index in Agriculture – Livestock and of the sub-indices of Crop and Animal Production (2020=100.0)**



**Graph 5. Annual rates of changes (%) of the Input Price Index in Agriculture – Livestock and of the sub-indices of Intermediate Consumption and Capital Formation (2020=100.0)**



## METHODOLOGICAL NOTES

|  |   |
|--|---|
| <b>Generally</b>                           | The compilation of the Input and Output Price Indices in Agriculture and Livestock by the Hellenic Statistical Authority (ELSTAT) started in 1967 with base year 1966=100.0.  |
| <b>Purpose of the indices– definitions</b> | <p>The purpose of the Output Price Index is to measure the relative change in the prices that the producers receive in the agricultural – livestock sector from the sale of their products. The purpose of the Input Price Index is to measure the change in the prices paid by producers for the purchase of the means, goods and services used in the production process.</p> <p>The Output Price Index is composed of the crop and the animal output sub-indices. The Input Price Index is composed of the intermediate consumption goods and the fixed capital formation goods sub-indices.</p> <p>As regards the Output Price Index, the prices collected are the selling prices of the products from the producers (without subsidies) and are considered as producer prices, excluding VAT, transport costs and various deductions in favor of third parties.</p> <p>As regards the Input Price Index, the prices collected are the prices paid by the producers for buying the goods and services they need for the production process, excluding VAT and transport expenses.</p> |
| <b>Legal basis</b>                         | The compilation of the Input and Output Price Indices in the Agriculture and Livestock is based on voluntary agreements between the Member States of the European Union (EU) and Eurostat. The foundations for these agreements were laid in the early seventies.   |
| <b>Reference period</b>                    | Month.  |
| <b>Base year</b>                           | 2020=100.0.   |
| <b>Revision</b>                            | The Input and Output Price Indices are fixed-basis indices. The recent revision was carried out with base year 2020=100.0.  |
| <b>Statistical classification</b>          | According to the common methodology used by the EU Member States, the groups of products of the Agricultural Price Indices follow the same classification as in Economic Accounts for Agriculture (EAA).  |
| <b>Geographical coverage</b>               | The indices cover the whole country.  |
| <b>Coverage of economic activities</b>     | The Input and Output Price Indices cover the transactions for products and services in the sector of agriculture and livestock. In addition, the transactions for olive oil and must - wine are covered, which are included in the manufacturing sector when their production – manufacturing process takes place at the level of agricultural unit, thus it is considered to be an activity of the agricultural sector.  |
| <b>Seasonality</b>                         | Seasonality influences the agricultural and livestock production and as a result some products are not available every month in a calendar year. For this reason, the weighting coefficients of output products differ per month in the year.   |
| <b>Statistical survey</b>                  | <p>The data sources are the commercial and the industrial enterprises which buy the final products directly from the producers, as well as the agricultural cooperatives (unions), that collect the agricultural products. Moreover, prices are collected from various organizations that collect products from the producers, such as raisin associations, and from agencies that collect price data, such as the Ministry of Rural Development and Food.</p> <p>The price data for output price index are collected from 745 sources, while for input price index from 665 sources across the country.</p>  |
| <b>Publication of data</b>                 | The Input and Output Price Indices with base year 2020=100.0, are released since May 2024 with March 2024 data as first reference month. The back casting calculations of the time series of the indices for the years before the year 2020, were calculated by dividing the price indices of products and groups by the corresponding price index of the year 2020 (2015=100.0), so that the changes (monthly and annual) of the indices of the time series remain the same.   |
| <b>References</b>                          | More information on the methodology concerning the compilation and calculation of the indices, as well as the time series is available on the website of ELSTAT, at:<br><a href="http://www.statistics.gr/en/statistics/-/publication/DKT30/">http://www.statistics.gr/en/statistics/-/publication/DKT30/</a>   |