



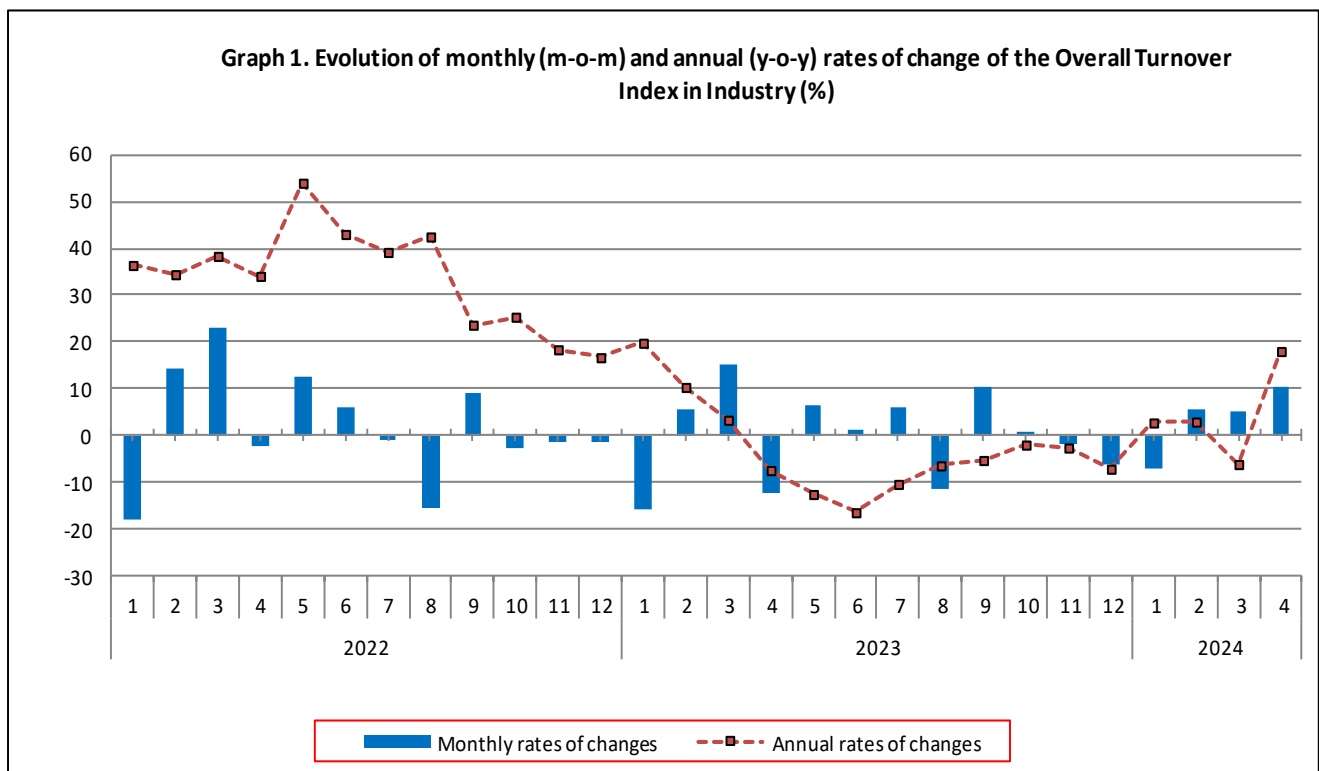
## TURNOVER INDEX IN INDUSTRY: April 2024, y-o-y increase of 18.0%

The Hellenic Statistical Authority announces the Turnover Index in Industry with base year 2015=100.0 for April 2024, the evolution of which on the basis of provisional data, is as follows:

The Overall Turnover Index in Industry (both Domestic and Non-Domestic Market) in April 2024 recorded an increase of 18.0% compared with the corresponding index of April 2023. The Overall Turnover Index in Industry in April 2023 decreased by 7.4% compared with the corresponding index in April 2022 (Table 1).

The Overall Turnover Index in Industry in April 2024, compared with March 2024, recorded an increase of 10.2% (Table 6).

The average Overall Turnover Index in Industry for the 12-month period from May 2023 to April 2024 decreased by 4.4%, compared with the corresponding index of the 12-month period from May 2022 to April 2023. The average Overall Turnover Index in Industry for the 12-month period from May 2022 to April 2023 increased by 22.7% compared with the corresponding index of the 12-month period from May 2021 to April 2022 (Table 13).



### Information on methodological issues:

Division of Business Statistics  
Section of Manufacture-Construction Indices and Industrial Products  
Head of the Section : Diamantaki Aikaterini  
Tel: +30 213 135 2056  
E-mail: [a.diamantaki@statistics.gr](mailto:a.diamantaki@statistics.gr)

### Information on data provision:

Tel: +30 213 135 2022, 2308, 2310  
E-mail: [data.dissem@statistics.gr](mailto:data.dissem@statistics.gr)

## Evolution of the Overall Turnover Index in Industry in April 2024

### I. Annual changes of the Overall Turnover Index in Industry: April 2024 / April 2023

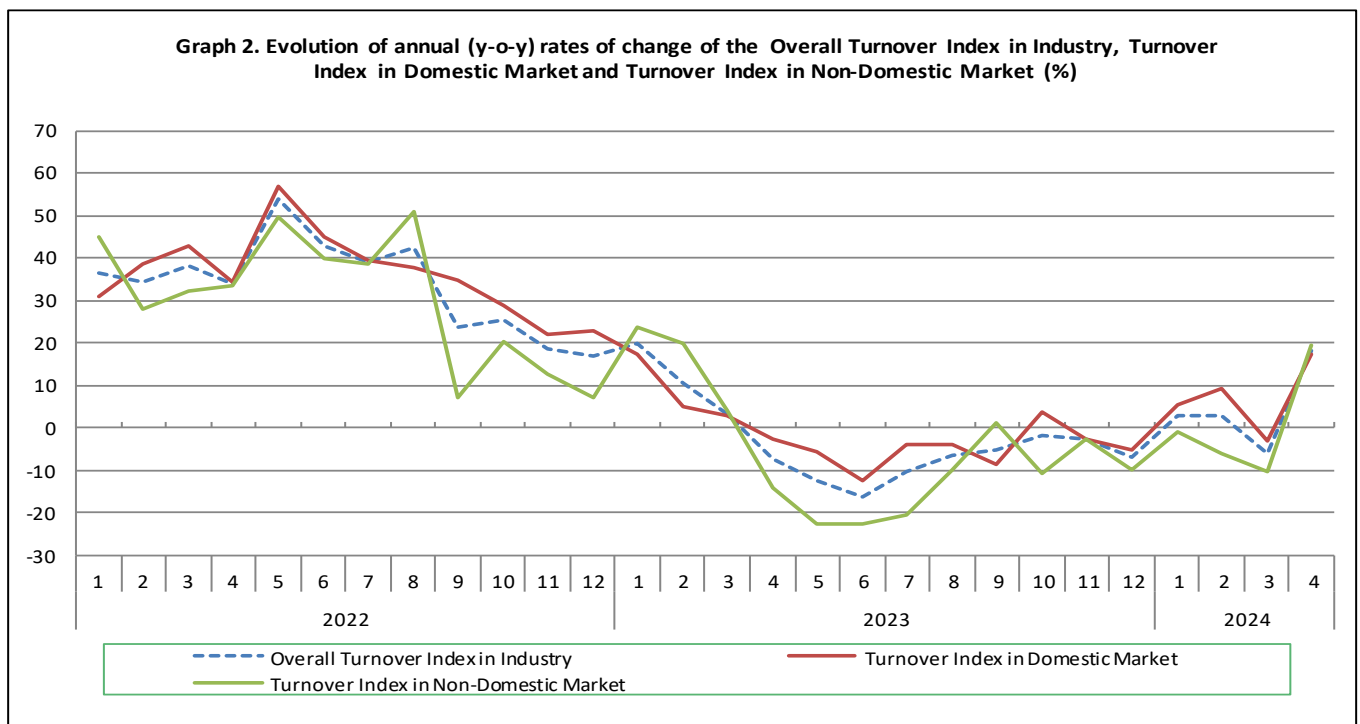
The 18.0% increase in the Overall Turnover Index in Industry in April 2024, compared with the corresponding index in April 2023, was due to the following:

#### 1. Changes in the sub-indices of the industrial sections (Table 1):

- The Turnover Index in Mining and quarrying increased by 41.8%. The increase was mainly the result of the annual changes of the sub-indices in the following 2-digit divisions: mining of metal ores, other mining and quarrying products.
- The Turnover Index in Manufacturing increased by 17.8%. The increase was mainly the result of the annual changes of the sub-indices in the following 2-digit divisions: tobacco products, basic pharmaceutical products and pharmaceutical preparations, other non-metallic mineral products, food.

#### 2. Changes in the sub-indices in Domestic and Non-Domestic Markets:

- The Turnover Index in Industry in Non-Domestic Market increased by 19.4% (Table 3).
- The Turnover Index in Industry in Domestic Market increased by 17.2% (Table 2).



### II. Annual changes of the Turnover Index in Industry in Domestic Market: April 2024 / April 2023

The 17.2% increase of the Turnover Index in Industry in Domestic Market in April 2024, compared with April 2023, is due to the annual changes in the sub-indices of the following industrial sections (Table 2):

- The Turnover Index in Mining and quarrying increased by 42.4%. The increase was mainly the result of the annual changes of the sub-indices in the following 2-digit divisions: other mining and quarrying products, mining of metal ores.
- The Turnover Index in Manufacturing increased by 17.1%. The increase was mainly the result of the annual changes of the sub-indices in the following 2-digit divisions: tobacco products, basic pharmaceutical products and pharmaceutical preparations, other non-metallic mineral products, food.

### III. Annual changes of the Turnover Index in Industry in Non-Domestic Market: April 2024 / April 2023

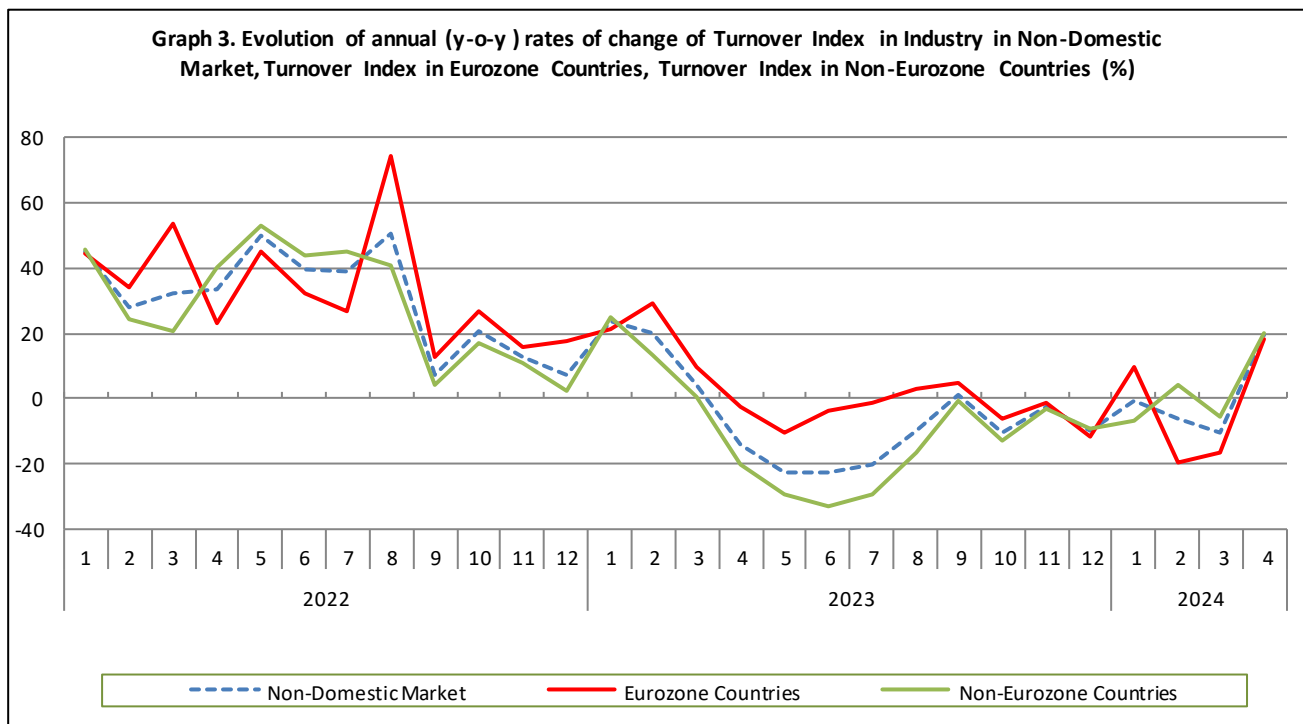
The 19.4% increase of the Turnover Index in Industry in Non-Domestic Market in April 2024, compared with April 2023, was due to the following:

#### 1. Changes in the sub-indices of the industrial sections (Table 3):

- The Turnover Index in Mining and quarrying increased by 41.3%. The increase was mainly the result of the annual changes of the sub-indices in the following 2-digit divisions: mining of metal ores, other mining and quarrying products.
- The Turnover Index in Manufacturing increased by 19.1%. The increase was mainly the result of the annual changes of the sub-indices in the following 2-digit divisions: tobacco products, basic pharmaceutical products and pharmaceutical preparations, food, basic metals, coke and refined petroleum products.

#### 2. Changes in the sub-indices in Eurozone and Non-Eurozone countries:

- The Turnover Index in Industry in Non-Eurozone countries increased by 20.1% (Table 5).
- The Turnover Index in Industry in Eurozone countries increased by 18.4% (Table 4).



### IV. Monthly changes of the Overall Turnover Index in Industry: April 2024 / March 2024

The 10,2% increase of the Overall Turnover Index in Industry in April 2024, compared with the corresponding index in March 2024, was due to the following:

#### 1. Changes in the sub-indices of industrial sections (Table 6):

- The Turnover Index in Mining and quarrying increased by 20.4%.
- The Turnover Index in Manufacturing increased by 10.1%.

#### 2. Changes in the sub-indices in Domestic and Non-Domestic Market:

- The Turnover Index in Industry in Domestic Market increased by 12.3% (Table 7).
- The Turnover Index in Industry in Non-Domestic Market increased by 6.9% (Table 8).

**Table 1. Annual rates of change of the Turnover Index in Industry: Total Market**

Base year: 2015=100.0

Code	Division	Weights	April			Rate of change (%)	
			2024*	2023*	2022	2024/2023	2023/2022
<b>OVERALL INDEX</b>			<b>178.78</b>	<b>151.47</b>	<b>163.53</b>	<b>18.0</b>	<b>-7.4</b>
<b>B</b>	<b>MINING AND QUARRYING</b>	<b>100.00</b>	<b>138.94</b>	<b>97.97</b>	<b>89.09</b>	<b>41.8</b>	<b>10.0</b>
<b>05-06-09</b>	Mining of coal and lignite - Extraction of crude petroleum and natural gas - Mining support service activities	21.19	26.93	17.06	24.09	57.9	-29.2
<b>07</b>	Mining of metal ores	17.56	200.78	126.97	147.83	58.1	-14.1
<b>08</b>	Other mining and quarrying products	61.25	159.97	117.64	94.74	36.0	24.2
<b>C</b>	<b>MANUFACTURING</b>	<b>100.00</b>	<b>179.31</b>	<b>152.19</b>	<b>164.54</b>	<b>17.8</b>	<b>-7.5</b>
<b>10</b>	Food	23.39	161.40	132.43	133.21	21.9	-0.6
<b>11</b>	Beverages	3.57	195.77	158.01	143.49	23.9	10.1
<b>12</b>	Tobacco products	1.19	276.04	165.73	155.98	66.6	6.2
<b>13</b>	Textiles	1.28	147.81	127.43	129.43	16.0	-1.5
<b>14</b>	Wearing apparel	1.80	86.45	83.01	91.62	4.1	-9.4
<b>15</b>	Leather and related products	0.34	116.62	134.90	91.31	-13.5	47.7
<b>16</b>	Wood and products of wood and cork, except furniture	0.72	153.77	132.40	138.45	16.1	-4.4
<b>17</b>	Paper and paper products	2.44	167.31	144.67	151.11	15.7	-4.3
<b>18</b>	Printing and reproduction of recorded products	1.17	142.39	110.94	114.59	28.3	-3.2
<b>19</b>	Coke and refined petroleum products	28.73	169.88	164.74	185.54	3.1	-11.2
<b>20</b>	Chemicals and chemical products	4.43	195.11	148.64	196.84	31.3	-24.5
<b>21</b>	Basic pharmaceutical products and pharmaceutical preparations	3.67	314.54	211.74	193.12	48.6	9.6
<b>22</b>	Rubber and plastic products	3.47	167.64	135.86	161.39	23.4	-15.8
<b>23</b>	Other non-metallic mineral products	3.31	207.34	151.81	151.27	36.6	0.4
<b>24</b>	Basic metals	7.19	209.66	185.81	234.22	12.8	-20.7
<b>25</b>	Fabricated metal products, except machinery and equipment	4.51	162.65	131.00	136.59	24.2	-4.1
<b>26</b>	Computers, electronic and optical products	0.78	270.24	216.07	216.33	25.1	-0.1
<b>27</b>	Electrical equipment	2.65	228.83	188.80	208.13	21.2	-9.3
<b>28</b>	Machinery and equipment n.e.c.	1.56	148.25	128.37	133.27	15.5	-3.7
<b>29</b>	Motor vehicles, trailers and semi-trailers	0.23	204.57	179.50	165.46	14.0	8.5
<b>30</b>	Other transport equipment	0.52	105.72	85.10	89.79	24.2	-5.2
<b>31</b>	Furniture	0.97	214.67	173.65	169.59	23.6	2.4
<b>32</b>	Other manufacturing	0.66	158.93	132.29	130.13	20.1	1.7
<b>33</b>	Repair and installation of machinery and equipment	1.42	132.05	102.08	99.06	29.4	3.0
<b>MAIN INDUSTRIAL GROUPINGS</b>							
<b>1</b>	Energy	28.57	168.84	163.64	184.34	3.2	-11.2
<b>2</b>	Intermediate goods	28.29	186.88	155.10	180.20	20.5	-13.9
<b>3</b>	Capital goods	7.00	156.41	130.22	131.46	20.1	-0.9
<b>4</b>	Consumer Durables	1.86	205.10	161.75	149.72	26.8	8.0
<b>5</b>	Consumer Non-Durables	34.28	183.50	142.11	139.72	29.1	1.7

\* Provisional data

Note: The indices and the percentage changes are rounded up to two and one decimal digits, respectively, when published.

**Table 2. Annual rates of change of the Turnover Index in Industry: Domestic Market**

Base year: 2015=100.0

Code	Division	Weights	April			Rate of change (%)	
			2024*	2023*	2022	2024/2023	2023/2022
<b>OVERALL INDEX</b>			<b>170.31</b>	<b>145.26</b>	<b>149.57</b>	<b>17.2</b>	<b>-2.9</b>
<b>B</b>	<b>MINING AND QUARRYING</b>	<b>100.00</b>	<b>118.72</b>	<b>83.35</b>	<b>78.93</b>	<b>42.4</b>	<b>5.6</b>
05-06-09	Mining of coal and lignite - Extraction of crude petroleum and natural gas - Mining support service activities	31.66	23.76	19.23	28.47	23.6	-32.5
07	Mining of metal ores	12.83	105.10	77.86	83.69	35.0	-7.0
08	Other mining and quarrying products	55.50	176.03	121.19	106.61	45.2	13.7
<b>C</b>	<b>MANUFACTURING</b>	<b>100.00</b>	<b>170.91</b>	<b>145.97</b>	<b>150.38</b>	<b>17.1</b>	<b>-2.9</b>
10	Food	28.50	145.05	121.82	123.62	19.1	-1.5
11	Beverages	4.86	195.57	158.64	143.27	23.3	10.7
12	Tobacco products	0.51	341.32	129.71	242.69	163.1	-46.6
13	Textiles	1.11	138.43	119.03	117.58	16.3	1.2
14	Wearing apparel	1.77	102.29	97.95	101.31	4.4	-3.3
15	Leather and related products	0.41	107.91	105.28	98.58	2.5	6.8
16	Wood and products of wood and cork, except furniture	0.96	146.63	128.12	130.52	14.4	-1.8
17	Paper and paper products	3.12	160.87	141.20	143.96	13.9	-1.9
18	Printing and reproduction of recorded products	1.63	125.17	94.76	96.99	32.1	-2.3
19	Coke and refined petroleum products	24.90	144.88	153.73	156.39	-5.8	-1.7
20	Chemicals and chemical products	4.90	203.14	150.04	196.81	35.4	-23.8
21	Basic pharmaceutical products and pharmaceutical preparations	3.85	313.87	202.86	203.04	54.7	-0.1
22	Rubber and plastic products	3.31	174.61	138.67	155.78	25.9	-11.0
23	Other non-metallic mineral products	3.31	242.70	161.34	156.50	50.4	3.1
24	Basic metals	3.49	246.05	239.09	262.13	2.9	-8.8
25	Fabricated metal products, except machinery and equipment	4.25	199.23	156.14	162.04	27.6	-3.6
26	Computers, electronic and optical products	0.40	209.93	158.16	134.23	32.7	17.8
27	Electrical equipment	2.24	262.98	212.00	203.06	24.0	4.4
28	Machinery and equipment n.e.c.	1.46	175.00	143.56	147.45	21.9	-2.6
29	Motor vehicles, trailers and semi-trailers	0.27	213.46	200.97	177.74	6.2	13.1
30	Other transport equipment	0.58	67.46	68.57	59.16	-1.6	15.9
31	Furniture	1.35	207.85	167.78	162.80	23.9	3.1
32	Other manufacturing	0.88	154.36	130.55	124.20	18.2	5.1
33	Repair and installation of machinery and equipment	1.92	136.19	104.09	102.08	30.8	2.0
<b>MAIN INDUSTRIAL GROUPINGS</b>							
1	Energy	24.89	143.66	152.36	155.13	-5.7	-1.8
2	Intermediate goods	25.73	195.12	159.47	173.32	22.4	-8.0
3	Capital goods	7.19	174.77	138.40	137.87	26.3	0.4
4	Consumer Durables	2.31	174.39	151.58	141.86	15.1	6.9
5	Consumer Non-Durables	39.88	169.89	132.52	133.33	28.2	-0.6

\* Provisional data

Note: The indices and the percentage changes are rounded up to two and one decimal digits, respectively, when published.

**Table 3. Annual rates of change of the Turnover Index in Industry: Non-Domestic Market**

Base year: 2015=100.0

Code	Division	Weights	April			Rate of change (%)	
			2024*	2023*	2022	2024/2023	2023/2022
<b>OVERALL INDEX</b>			<b>195.45</b>	<b>163.71</b>	<b>191.03</b>	<b>19.4</b>	<b>-14.3</b>
<b>B</b>	<b>MINING AND QUARRYING</b>	<b>100.00</b>	<b>165.34</b>	<b>117.04</b>	<b>102.36</b>	<b>41.3</b>	<b>14.4</b>
05-06-09	Mining of coal and lignite - Extraction of crude petroleum and natural gas - Mining support service activities	7.53	44.31	5.14	0.00	762.3	-
07	Mining of metal ores	23.74	268.29	161.63	193.09	66.0	-16.3
08	Other mining and quarrying products	68.74	143.04	113.90	82.23	25.6	38.5
<b>C MANUFACTURING</b>		<b>100.00</b>	<b>195.98</b>	<b>164.53</b>	<b>192.58</b>	<b>19.1</b>	<b>-14.6</b>
10	Food	13.27	230.97	177.59	174.02	30.1	2.1
11	Beverages	1.01	197.68	151.99	145.62	30.1	4.4
12	Tobacco products	2.53	249.72	180.25	121.02	38.5	48.9
13	Textiles	1.61	160.68	138.95	145.69	15.6	-4.6
14	Wearing apparel	1.86	56.59	54.85	73.36	3.2	-25.2
15	Leather and related products	0.19	154.07	262.21	60.05	-41.2	336.6
16	Wood and products of wood and cork, except furniture	0.24	210.42	166.41	201.39	26.4	-17.4
17	Paper and paper products	1.11	203.13	163.98	190.92	23.9	-14.1
18	Printing and reproduction of recorded products	0.26	356.81	312.52	333.75	14.2	-6.4
19	Coke and refined petroleum products	36.32	203.86	179.71	225.14	13.4	-20.2
20	Chemicals and chemical products	3.50	172.87	144.74	196.93	19.4	-26.5
21	Basic pharmaceutical products and pharmaceutical preparations	3.30	316.10	232.26	170.22	36.1	36.4
22	Rubber and plastic products	3.79	155.55	130.99	171.11	18.7	-23.4
23	Other non-metallic mineral products	3.31	137.23	132.89	140.91	3.3	-5.7
24	Basic metals	14.54	192.36	160.47	220.95	19.9	-27.4
25	Fabricated metal products, except machinery and equipment	5.03	101.36	88.88	93.95	14.0	-5.4
26	Computers, electronic and optical products	1.52	301.63	246.21	259.05	22.5	-5.0
27	Electrical equipment	3.44	184.69	158.81	214.69	16.3	-26.0
28	Machinery and equipment n.e.c.	1.76	104.30	103.41	109.98	0.9	-6.0
29	Motor vehicles, trailers and semi-trailers	0.14	169.98	95.90	117.65	77.3	-18.5
30	Other transport equipment	0.40	214.77	132.19	177.08	62.5	-25.4
31	Furniture	0.21	301.64	248.36	256.10	21.5	-3.0
32	Other manufacturing	0.22	194.38	145.75	176.08	33.4	-17.2
33	Repair and installation of machinery and equipment	0.43	95.62	84.42	72.56	13.3	16.4
<b>MAIN INDUSTRIAL GROUPINGS</b>							
1	Energy	35.82	203.28	179.07	224.32	13.5	-20.2
2	Intermediate goods	33.33	174.36	148.46	190.66	17.4	-22.1
3	Capital goods	6.62	117.14	112.73	117.76	3.9	-4.3
4	Consumer Durables	0.98	348.04	209.09	186.30	66.5	12.2
5	Consumer Non-Durables	23.25	229.50	174.52	161.34	31.5	8.2

\* Provisional data

Note: The indices and the percentage changes are rounded up to two and one decimal digits, respectively, when published.

**Table 4. Annual rates of change of the Turnover Index in Industry: Eurozone Countries**

Base year: 2015=100.0

Code	Sections and main groupings	April			Rate of change (%)	
		2024*	2023*	2022	2024/2023	2023/2022
<b>OVERALL INDEX</b>		<b>220.54</b>	<b>186.34</b>	<b>191.55</b>	<b>18.4</b>	<b>-2.7</b>
<b>INDUSTRIAL SECTIONS</b>						
<b>B</b>	MINING AND QUARRYING	191.33	77.48	70.78	146.9	9.5
<b>C</b>	MANUFACTURING	221.12	188.52	193.97	17.3	-2.8
<b>MAIN INDUSTRIAL GROUPINGS</b>						
<b>1</b>	Energy	246.58	203.49	207.56	21.2	-2.0
<b>2</b>	Intermediate goods	183.21	167.17	199.35	9.6	-16.1
<b>3</b>	Capital goods	162.81	137.21	131.74	18.7	4.2
<b>4</b>	Consumer Durables	586.17	357.20	241.94	64.1	47.6
<b>5</b>	Consumer Non-Durables	240.84	197.57	178.41	21.9	10.7

\* Provisional data

**Table 5. Annual rates of change of the Turnover Index in Industry: Non-Eurozone Countries**

Base year: 2015=100.0

Code	Sections and main groupings	April			Rate of change (%)	
		2024*	2023*	2022	2024/2023	2023/2022
<b>OVERALL INDEX</b>		<b>182.12</b>	<b>151.68</b>	<b>190.76</b>	<b>20.1</b>	<b>-20.5</b>
<b>INDUSTRIAL SECTIONS</b>						
<b>B</b>	MINING AND QUARRYING	148.28	143.01	123.08	3.7	16.2
<b>C</b>	MANUFACTURING	182.67	151.82	191.85	20.3	-20.9
<b>MAIN INDUSTRIAL GROUPINGS</b>						
<b>1</b>	Energy	190.81	172.04	229.15	10.9	-24.9
<b>2</b>	Intermediate goods	168.59	136.26	185.00	23.7	-26.3
<b>3</b>	Capital goods	101.66	104.44	113.03	-2.7	-7.6
<b>4</b>	Consumer Durables	183.60	106.81	147.89	71.9	-27.8
<b>5</b>	Consumer Non-Durables	218.47	152.09	144.72	43.6	5.1

\* Provisional data

Note: The indices and the percentage changes are rounded up to two and one decimal digits, respectively, when published.

**Table 6. Monthly rate of change of the Turnover Index in Industry: Total Market**

Base year: 2015=100.0

Code	Sections and main groupings	April 2024*	March 2024**	Rate of change (%) April 2024 / March 2024
<b>OVERALL INDEX</b>		<b>178.78</b>	<b>162.20</b>	<b>10.2</b>
<b>INDUSTRIAL SECTIONS</b>				
<b>B</b>	MINING AND QUARRYING	138.94	115.36	20.4
<b>C</b>	MANUFACTURING	179.31	162.83	10.1
<b>MAIN INDUSTRIAL GROUPINGS</b>				
<b>1</b>	Energy	168.84	165.14	2.2
<b>2</b>	Intermediate goods	186.88	168.95	10.6
<b>3</b>	Capital goods	156.41	147.07	6.3
<b>4</b>	Consumer Durables	205.10	183.35	11.9
<b>5</b>	Consumer Non-Durables	183.50	156.11	17.5

**Table 7. Monthly rate of change of the Turnover Index in Industry: Domestic Market**

Base year: 2015=100.0

Code	Sections and main groupings	April 2024*	March 2024**	Rate of change (%) April 2024 / March 2024
<b>OVERALL INDEX</b>		<b>170.31</b>	<b>151.71</b>	<b>12.3</b>
<b>INDUSTRIAL SECTIONS</b>				
<b>B</b>	MINING AND QUARRYING	118.72	100.91	17.6
<b>C</b>	MANUFACTURING	170.91	152.30	12.2
<b>MAIN INDUSTRIAL GROUPINGS</b>				
<b>1</b>	Energy	143.66	145.97	-1.6
<b>2</b>	Intermediate goods	195.12	173.57	12.4
<b>3</b>	Capital goods	174.77	158.47	10.3
<b>4</b>	Consumer Durables	174.39	142.89	22.0
<b>5</b>	Consumer Non-Durables	169.89	140.48	20.9

**Table 8. Monthly rate of change of the Turnover Index in Industry: Non-Domestic Market**

Base year: 2015=100.0

Code	Sections and main groupings	April 2024*	March 2024**	Rate of change (%) April 2024 / March 2024
<b>OVERALL INDEX</b>		<b>195.45</b>	<b>182.85</b>	<b>6.9</b>
<b>INDUSTRIAL SECTIONS</b>				
<b>B</b>	MINING AND QUARRYING	165.34	134.21	23.2
<b>C</b>	MANUFACTURING	195.98	183.70	6.7
<b>MAIN INDUSTRIAL GROUPINGS</b>				
<b>1</b>	Energy	203.28	191.37	6.2
<b>2</b>	Intermediate goods	174.36	161.91	7.7
<b>3</b>	Capital goods	117.14	122.68	-4.5
<b>4</b>	Consumer Durables	348.04	371.67	-6.4
<b>5</b>	Consumer Non-Durables	229.50	208.94	9.8

\* Provisional data \*\* Revised data

Note: The indices and the percentage changes are rounded up to two and one decimal digits, respectively, when published.



**Table 9. Monthly rate of change of the Turnover Index in Industry: Eurozone Countries**

Base year: 2015=100.0

Code	Sections and main groupings	April 2024*	March 2024**	Rate of change (%) April 2024 / March 2024
<b>OVERALL INDEX</b>		<b>220.54</b>	<b>206.73</b>	<b>6.7</b>
<b>INDUSTRIAL SECTIONS</b>				
<b>B</b>	MINING AND QUARRYING	191.33	116.30	64.5
<b>C</b>	MANUFACTURING	221.12	208.55	6.0
<b>MAIN INDUSTRIAL GROUPINGS</b>				
<b>1</b>	Energy	246.58	203.29	21.3
<b>2</b>	Intermediate goods	183.21	174.53	5.0
<b>3</b>	Capital goods	162.81	192.87	-15.6
<b>4</b>	Consumer Durables	586.17	464.73	26.1
<b>5</b>	Consumer Non-Durables	240.84	239.11	0.7

\* Provisional data \*\* Revised data

**Table 10. Monthly rate of change of the Turnover Index in Industry: Non-Eurozone Countries**

Base year: 2015=100.0

Code	Sections and main groupings	April 2024*	March 2024**	Rate of change (%) April 2024 / March 2024
<b>OVERALL INDEX</b>		<b>182.12</b>	<b>170.16</b>	<b>7.0</b>
<b>INDUSTRIAL SECTIONS</b>				
<b>B</b>	MINING AND QUARRYING	148.28	145.97	1.6
<b>C</b>	MANUFACTURING	182.67	170.55	7.1
<b>MAIN INDUSTRIAL GROUPINGS</b>				
<b>1</b>	Energy	190.81	187.94	1.5
<b>2</b>	Intermediate goods	168.59	153.69	9.7
<b>3</b>	Capital goods	101.66	98.89	2.8
<b>4</b>	Consumer Durables	183.60	307.40	-40.3
<b>5</b>	Consumer Non-Durables	218.47	179.58	21.7

\* Provisional data \*\* Revised data

Note: The indices and the percentage changes are rounded up to two and one decimal digits, respectively, when published.

**Table 11. Evolution of the Turnover Index in Industry (y-o-y changes): Total Market**

Base year: 2015=100.0

Year and month	Overall Index (Total Market)		Turnover Index in Industry in Domestic Market		Turnover Index in Industry in Non-Domestic Market	
	Index	Annual rate of change (%)	Index	Annual rate of change (%)	Index	Annual rate of change (%)
<b>2023*:</b> 4	151.47	-7.4	145.26	-2.9	163.71	-14.3
5	161.10	-12.5	156.63	-5.7	169.90	-22.6
6	163.38	-16.4	162.13	-12.6	165.84	-22.9
7	173.48	-10.3	171.99	-4.0	176.42	-20.4
8	153.95	-6.4	146.93	-4.2	167.78	-10.0
9	169.65	-5.2	162.08	-8.6	184.55	1.1
10	170.88	-1.9	167.88	3.5	176.80	-10.7
11	167.40	-2.6	158.44	-2.5	185.04	-2.6
12	157.11	-7.1	154.80	-5.4	161.67	-10.1
<b>2024*:</b> 1	146.31	2.8	130.62	5.5	177.21	-0.9
2	154.58	3.0	147.12	9.2	169.27	-6.2
3	162.20	-6.1	151.71	-3.3	182.85	-10.3
4	178.78	18.0	170.31	17.2	195.45	19.4

\*Provisional data

**Table 12. Evolution of the Turnover Index in Industry (y-o-y changes): Non-Domestic Market**

Base year: 2015=100.0

Year and month	Overall Index (Non-Domestic Market)		Turnover Index in Industry in Eurozone Countries		Turnover Index in Industry in Non-Eurozone Countries	
	Index	Annual rate of change (%)	Index	Annual rate of change (%)	Index	Annual rate of change (%)
<b>2023*:</b> 4	163.71	-14.3	186.34	-2.7	151.68	-20.5
5	169.90	-22.6	210.40	-10.5	148.38	-29.7
6	165.84	-22.9	210.60	-3.7	142.06	-33.3
7	176.42	-20.4	205.91	-1.4	160.74	-29.6
8	167.78	-10.0	192.58	3.1	154.60	-17.0
9	184.55	1.1	192.66	4.9	180.24	-0.9
10	176.80	-10.7	202.62	-6.3	163.07	-13.3
11	185.04	-2.6	195.90	-1.5	179.27	-3.2
12	161.67	-10.1	150.07	-11.9	167.83	-9.2
<b>2024*:</b> 1	177.21	-0.9	208.12	9.5	160.78	-7.0
2	169.27	-6.2	179.21	-20.0	163.99	4.3
3	182.85	-10.3	206.73	-16.7	170.16	-5.6
4	195.45	19.4	220.54	18.4	182.12	20.1

\*Provisional data

Note: The indices and the percentage changes are rounded up to two and one decimal digits, respectively, when published.

**Table 13. Average indices and rates of change (%) of the 12-month periods of Turnover Index in Industry: Total Market**  
**Base year: 2015=100.0**

Code	Division	Average Indices of 12-month periods			Rate of change (%)	
		May 2023*- April 2024*	May 2022- April 2023*	May 2021- April 2022	2024/2023	2023/2022
<b>OVERALL INDEX</b>		<b>163.23</b>	<b>170.69</b>	<b>139.15</b>	<b>-4.4</b>	<b>22.7</b>
<b>B</b>	<b>MINING AND QUARRYING</b>	<b>123.27</b>	<b>113.48</b>	<b>101.26</b>	<b>8.6</b>	<b>12.1</b>
<b>05-06-09</b>	Mining of coal and lignite - Extraction of crude petroleum and natural gas - Mining support service activities	42.89	28.08	22.56	52.8	24.5
<b>07</b>	Mining of metal ores	201.59	177.04	162.00	13.9	9.3
<b>08</b>	Other mining and quarrying products	128.62	124.80	111.08	3.1	12.4
<b>C</b>	<b>MANUFACTURING</b>	<b>163.77</b>	<b>171.47</b>	<b>139.66</b>	<b>-4.5</b>	<b>22.8</b>
<b>10</b>	Food	147.90	140.74	119.75	5.1	17.5
<b>11</b>	Beverages	160.29	144.41	122.92	11.0	17.5
<b>12</b>	Tobacco products	226.23	203.18	146.34	11.3	38.8
<b>13</b>	Textiles	122.84	130.69	123.39	-6.0	5.9
<b>14</b>	Wearing apparel	86.77	94.85	89.40	-8.5	6.1
<b>15</b>	Leather and related products	86.50	87.21	75.92	-0.8	14.9
<b>16</b>	Wood and products of wood and cork, except furniture	144.17	142.99	126.51	0.8	13.0
<b>17</b>	Paper and paper products	147.15	158.09	128.46	-6.9	23.1
<b>18</b>	Printing and reproduction of recorded products	120.90	117.89	104.98	2.6	12.3
<b>19</b>	Coke and refined petroleum products	168.40	201.93	142.60	-16.6	41.6
<b>20</b>	Chemicals and chemical products	163.27	183.84	154.61	-11.2	18.9
<b>21</b>	Basic pharmaceutical products and pharmaceutical preparations	257.01	225.71	191.25	13.9	18.0
<b>22</b>	Rubber and plastic products	147.90	149.73	142.45	-1.2	5.1
<b>23</b>	Other non-metallic mineral products	175.97	154.72	129.57	13.7	19.4
<b>24</b>	Basic metals	183.80	208.92	190.47	-12.0	9.7
<b>25</b>	Fabricated metal products, except machinery and equipment	143.75	137.92	129.76	4.2	6.3
<b>26</b>	Computers, electronic and optical products	261.75	252.74	200.02	3.6	26.4
<b>27</b>	Electrical equipment	227.48	222.14	198.72	2.4	11.8
<b>28</b>	Machinery and equipment n.e.c.	137.39	142.02	128.94	-3.3	10.1
<b>29</b>	Motor vehicles, trailers and semi-trailers	184.64	179.86	145.66	2.7	23.5
<b>30</b>	Other transport equipment	93.46	88.19	82.89	6.0	6.4
<b>31</b>	Furniture	164.55	153.15	135.79	7.4	12.8
<b>32</b>	Other manufacturing	140.37	134.79	118.80	4.1	13.5
<b>33</b>	Repair and installation of machinery and equipment	137.39	120.61	104.60	13.9	15.3
<b>MAIN INDUSTRIAL GROUPINGS</b>						
<b>1</b>	Energy	167.52	200.64	141.71	-16.5	41.6
<b>2</b>	Intermediate goods	166.53	175.66	155.14	-5.2	13.2
<b>3</b>	Capital goods	148.35	142.43	128.24	4.2	11.1
<b>4</b>	Consumer Durables	174.40	157.28	128.03	10.9	22.8
<b>5</b>	Consumer Non-Durables	159.38	148.13	126.65	7.6	17.0

\*Provisional data

Note: The indices and the percentage changes are rounded up to two and one decimal digits, respectively, when published.

## METHODOLOGICAL NOTES

<b>Generally</b>	The Industrial Turnover Index is an indicator of an enterprise's business cycle showing the monthly evolution of the market of goods and services in industry. The first compilation of the Turnover Index was completed by the Hellenic Statistical Authority in 2006, with base year 2000=100.0 and is compiled from 2000 onwards.
<b>Purpose of the index</b>	The purpose of this index is to measure the monthly activity of the industrial sector in terms of value. Turnover comprises the totals invoiced by the observation units during the reference period and corresponds to the market sales of goods or services supplied to third parties. The purposes and the characteristics of the Turnover Index apply, as well, to the indices for the distinction between domestic and non-domestic turnover.
<b>Legal Framework</b>	The compilation and publication of the Turnover Index is based on the framework of the implementation of Council Regulation (EC) No 1165/1998 concerning short-term statistics (STS-R), as well as Regulation (EC) No 1158/2005 of the European Parliament and of the Council amending Council Regulation (EC) No 1165/1998. Furthermore, this index is governed by Regulation (EC) No 1893/2006 of the European Parliament and of the Council, by Commission Regulation (EC) No 656/2007, by Regulation (EC) No 451/2008 of the Council, by Regulation (EU) No 2019/2152 of the European Parliament and of the Council on European business statistics, as well as Commission Implementing Regulation (EU) No 2020/1197 laying down technical specifications and arrangements pursuant to Regulation (EU) No 2019/2152.
<b>Reference period</b>	Month.
<b>Base year</b>	2015=100.0.
<b>Revision</b>	The latest revision of the Turnover Index in Industry (base year 2015=100.0) took place in the framework of Council Regulation (EC) No 1165/1998 concerning short-term statistics. In accordance with this regulation the index is revised every five years, in years ending in 0 or 5.
<b>Statistical classifications</b>	At the level of classes of economic activities, the statistical classification of economic activities NACE Rev. 2 of EU was used (Regulation No 1893/2006), while at the level of main industrial groupings, the allocation of two-digit and three-digit NACE Rev. 2 headings to categories of aggregate classification was used, in accordance with Commission Regulation No 656/2007.
<b>Geographical coverage</b>	The index covers the whole Country.
<b>Coverage of economic activities</b>	The Turnover Index in Industry is compiled for all activities listed in Sections B (mining and quarrying) and C (manufacturing) of the NACE Rev. 2 statistical classification.
<b>Computation of the Index</b>	The Turnover Index in Industry is a fixed base index. This index is calculated at a first stage at the four-digit level of economic activity and subsequently, with the implementation of appropriate weighting coefficients, the index is calculated at higher levels (three-level and two-level of economic activity) as well as at the level of Main Industrial Groupings (MIGs).
<b>Publication of data</b>	The Turnover Index in Industry (2015=100.0) is released since August 2019 with June 2019 as first reference month. Data with base year 2015=100.0 are available from January 2000 onwards.
<b>References</b>	More information about the methodology concerning the compilation and calculation of the index and for the time series is available on the website of the Hellenic Statistical Authority (ELSTAT) ( <a href="http://www.statistics.gr/en/statistics/-/publication/DKT24/">http://www.statistics.gr/en/statistics/-/publication/DKT24/</a> ).