



## PRESS RELEASE

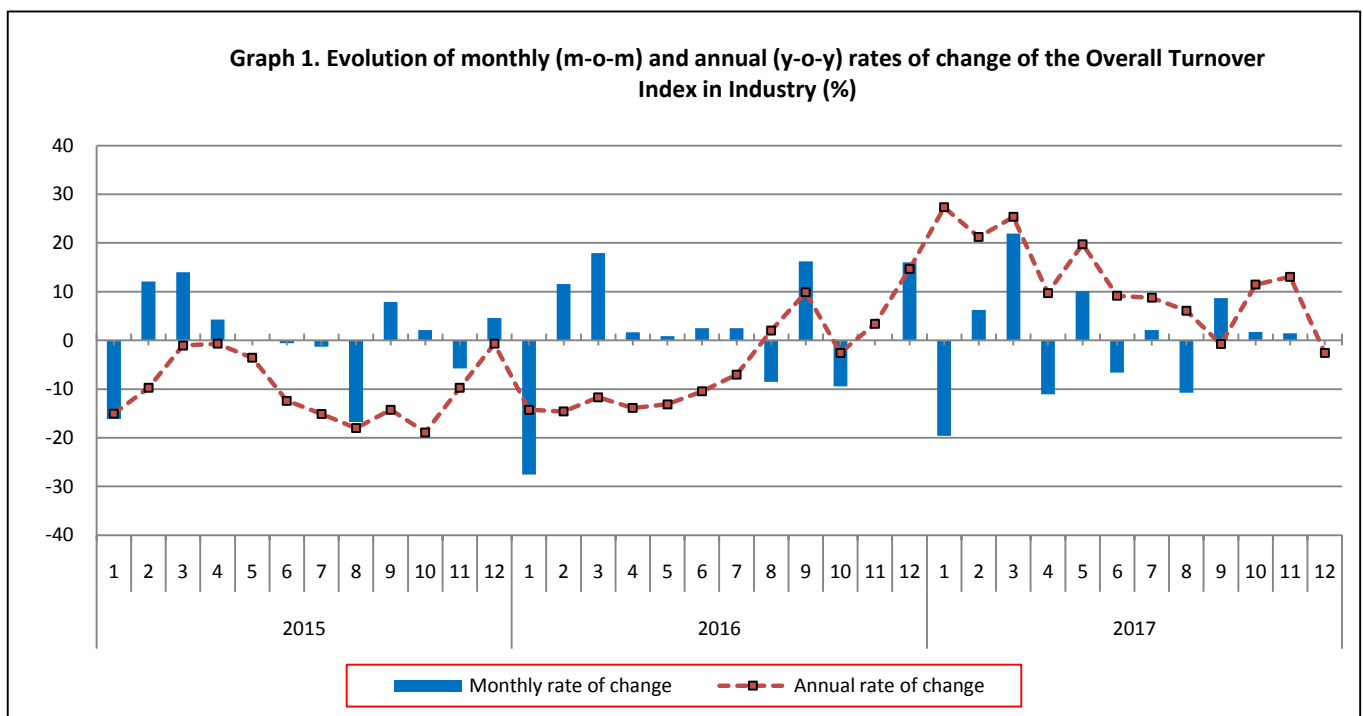
### TURNOVER INDEX IN INDUSTRY: December 2017, y-o-y decrease of 2.6%

The evolution of the Turnover Index in Industry with base year 2010=100.0 for December 2017, on the basis of provisional data, is as follows:

The Overall Turnover Index in Industry (both domestic and non-domestic market) in December 2017 recorded a decrease of 2.6% compared with the corresponding index of December 2016. In December 2016, the corresponding annual rate of change of the Overall Turnover Index in Industry was 14.7% (Table 1).

The Overall Turnover Index in Industry in December 2017, compared with November 2017, recorded an increase of 0.01% (Table 6).

The average Overall Turnover Index in Industry for the 12-month period from January 2017 to December 2017 increased by 11.6%, compared with the corresponding index of the 12-month period from January 2016 to December 2016. In December 2016, the corresponding annual rate of change of the Overall Turnover Index in Industry was -5.0% (Table 13).



#### Information:

Economic and Short-Term Indices Division  
Production Indices Section  
Diamantaki Aikaterini, Karathanos Panagiotis  
Tel: +30 213 135 2122, 213 135 2706  
Fax: +30 213 135 2738  
E-mail: [a.diamantaki@statistics.gr](mailto:a.diamantaki@statistics.gr), [p.karathanos@statistics.gr](mailto:p.karathanos@statistics.gr)

## Evolution of the Overall Turnover Index in Industry

### I. Annual changes of the Overall Turnover Index in Industry: December 2017/December 2016

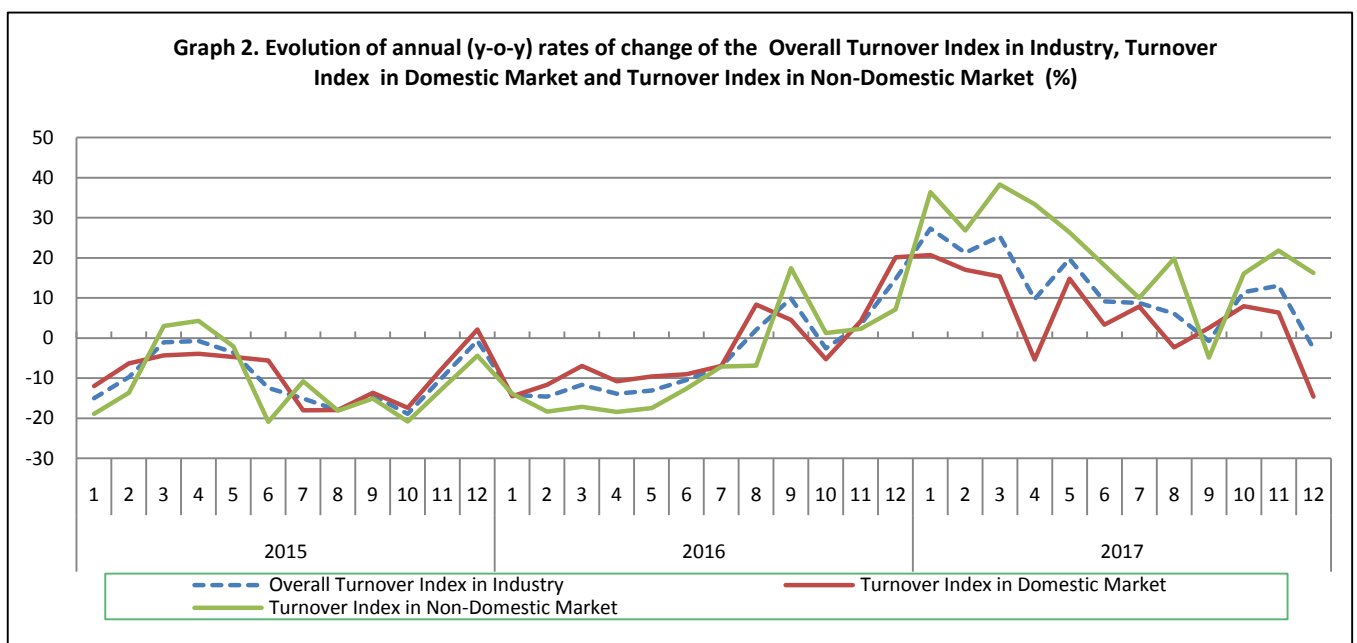
The 2.6% decrease in the Overall Turnover Index in Industry in December 2017, compared with the corresponding index in December 2016, was due to the following:

#### 1. Changes in the sub-indices of the industrial sections (Table 1):

- The Turnover Index in Mining and quarrying decreased by 6.8%. The decrease was the result of the annual change of the sub-index in the following 2-digit division: other mining and quarrying products.
- The Turnover Index in Manufacturing decreased by 2.5%. The decrease was the result of the annual changes of the sub-indices in the following 2-digit divisions: wearing apparel, other non-metallic mineral products, basic metals, motor vehicles, trailers and semi-trailers.

#### 2. Changes in the sub-indices of the domestic and non-domestic market:

- The Turnover Index in Industry for the domestic market decreased by 14.6% (Table 2).
- The Turnover Index in Industry for the non-domestic market increased by 16.3% (Table 3).



### II. Annual changes of the Turnover Index in Industry in the Domestic Market: December 2017/December 2016

The 14.6% decrease of the Turnover Index in Industry for the domestic market in December 2017, compared with December 2016, is due to the following annual changes in the sub-indices of the following industrial sections (Table 2):

- The Turnover Index in Mining and quarrying decreased by 17.5%. The decrease was the result of the annual changes of the sub-indices in the following 2-digit divisions: mining of metal ores, other mining and quarrying products.
- The Turnover Index in Manufacturing decreased by 14.6%. The decrease was the result of the annual changes of the sub-indices in the following 2-digit divisions: wearing apparel, coke and refined petroleum products, basic metals, motor vehicles, trailers and semi-trailers.

### III. Annual changes of the Turnover Index in Industry in the Non-Domestic Market: December 2017/December 2016

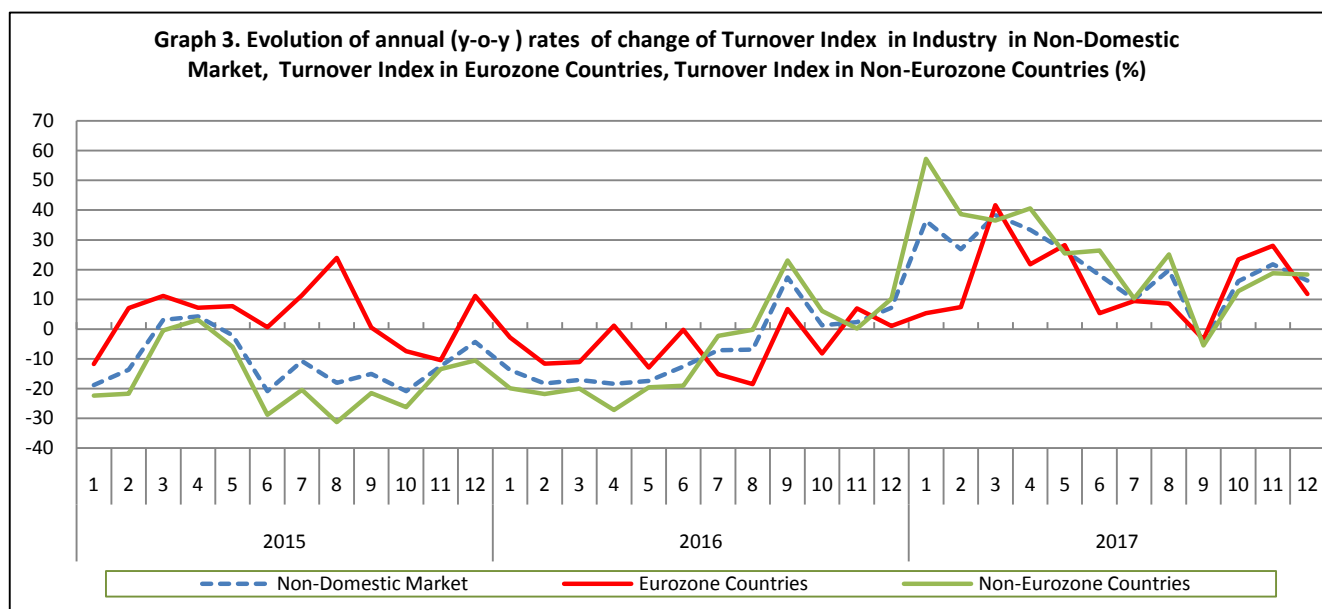
The 16.3% increase of the Turnover Index in Industry for the Non-Domestic market in December 2017, compared with December 2016, was due to the following:

#### 1. Changes in the sub-indices of the industrial sections (Table 3):

- The Turnover Index in Mining and quarrying increased by 0.5%. The increase was the result of the annual change of the sub-index in the following 2-digit division: mining of metal ores.
- The Turnover Index in Manufacturing increased by 16.7%. The increase was the result of the annual changes of the sub-indices in the following 2-digit divisions: paper and paper products, coke and refined petroleum products, basic pharmaceutical products and pharmaceutical preparations, basic metals.

#### 2. Changes in the sub-indices for Eurozone and Non-Eurozone countries:

- The Turnover Index in Industry for Eurozone countries increased by 11.8% (Table 4).
- The Turnover Index in Industry for non-Eurozone countries increased by 18.3% (Table 5).



### IV. Monthly changes of the Overall Turnover Index in Industry: December 2017/ November 2017

The 0.01% increase of the Overall Turnover Index in Industry in December 2017, compared with the corresponding index in November 2017, was due to the following:

#### 1. Changes in the sub-indices of industrial sections (Table 6):

- The Turnover Index in Manufacturing increased by 0.4%.
- The Turnover Index in Mining and quarrying decreased by 18.1%.

#### 2. Changes in the sub-indices of the domestic and non-domestic market:

- The Turnover Index in Industry for the domestic market increased by 0.3% (Table 7).
- The Turnover Index in Industry for the non-domestic market decreased by 0.4% (Table 8).

**Table 1. Annual rates of change of the Turnover Index in Industry: Total Market**

Base year: 2010=100.0

Code	Division	Weights	December			Rate of change (%)	
			2017*	2016	2015	2017/2016	2016/2015
<b>OVERALL INDEX</b>			<b>100.21</b>	<b>102.86</b>	<b>89.68</b>	<b>-2.6</b>	<b>14.7</b>
<b>B</b>	<b>MINING AND QUARRYING</b>	<b>100.00</b>	<b>91.10</b>	<b>97.73</b>	<b>101.15</b>	<b>-6.8</b>	<b>-3.4</b>
05	Mining of coal and lignite	5.89	139.55	116.10	98.51	20.2	17.9
06	Extraction of crude petroleum and natural gas	6.90	0.00	0.00	0.00	-	-
07	Mining of metal ores	16.67	162.44	122.16	149.17	33.0	-18.1
08	Other mining and quarrying products	70.54	79.14	99.97	99.92	-20.8	0.1
<b>C</b>	<b>MANUFACTURING</b>	<b>100.00</b>	<b>100.37</b>	<b>102.95</b>	<b>89.49</b>	<b>-2.5</b>	<b>15.0</b>
10	Food	18.21	82.92	87.01	92.10	-4.7	-5.5
11	Beverages	4.57	59.41	61.90	64.88	-4.0	-4.6
12	Tobacco products	1.10	124.62	132.42	128.37	-5.9	3.2
13	Textiles	1.21	58.62	62.61	53.54	-6.4	16.9
14	Wearing apparel	1.39	50.87	58.60	64.10	-13.2	-8.6
15	Leather and related products	0.28	31.85	40.70	45.98	-21.8	-11.5
16	Wood and cork	0.72	47.79	41.64	43.55	14.8	-4.4
17	Paper and paper products	2.07	93.57	84.91	90.00	10.2	-5.7
18	Printing and recording services	1.21	53.02	55.93	59.72	-5.2	-6.3
19	Coke and refined petroleum products	33.96	128.04	125.43	99.32	2.1	26.3
20	Chemicals and chemical products	4.97	84.72	75.74	80.51	11.9	-5.9
21	Basic pharmaceutical products and pharmaceutical preparations	2.64	149.25	120.45	135.25	23.9	-10.9
22	Rubber and plastic products	3.26	86.15	87.02	86.00	-1.0	1.2
23	Other non-metallic mineral products	4.59	50.23	58.49	57.16	-14.1	2.3
24	Basic metals	9.70	107.94	140.67	70.11	-23.3	100.6
25	Fabricated metal products	3.25	81.14	77.77	80.53	4.3	-3.4
26	Computers, electronic and optical products	0.35	301.93	213.37	303.97	41.5	-29.8
27	Electrical equipment	2.43	79.77	87.14	91.68	-8.5	-5.0
28	Machinery and equipment n. e. c.	0.88	114.35	126.96	116.97	-9.9	8.5
29	Motor vehicles, trailers and semi-trailers	0.28	110.58	174.35	142.25	-36.6	22.6
30	Other transport equipment	0.43	110.22	124.68	145.80	-11.6	-14.5
31	Furniture	0.84	66.84	60.41	71.28	10.6	-15.3
32	Other manufactured goods	0.25	109.97	104.11	101.63	5.6	2.4
33	Repair and installation services of machinery and equipment	1.41	92.35	100.01	102.16	-7.7	-2.1
<b>MAIN INDUSTRIAL GROUPINGS</b>							
1	Energy	33.61	127.63	124.98	98.98	2.1	26.3
2	Intermediate goods	31.86	87.29	96.24	77.72	-9.3	23.8
3	Capital goods	4.57	104.38	118.39	109.45	-11.8	8.2
4	Consumer Durables	1.53	98.70	81.57	108.08	21.0	-24.5
5	Consumer Non-Durables	28.43	81.72	82.80	87.92	-1.3	-5.8

\* Provisional data

Note: The indices and the percentage changes are rounded up to two and one decimal figures, respectively, when published.

**Table 2. Annual rates of change of the Turnover Index in Industry: Domestic Market**

Base year: 2010=100.0

Code	Division	Weights	December			Rate of change (%)	
			2017*	2016	2015	2017/2016	2016/2015
<b>OVERALL INDEX</b>			<b>77.54</b>	<b>90.82</b>	<b>75.61</b>	<b>-14.6</b>	<b>20.1</b>
<b>B</b>	<b>MINING AND QUARRYING</b>	<b>100.00</b>	<b>54.89</b>	<b>66.56</b>	<b>65.60</b>	<b>-17.5</b>	<b>1.5</b>
05	Mining of coal and lignite	9.91	140.54	116.92	99.21	20.2	17.9
06	Extraction of crude petroleum and natural gas	11.69	0.00	0.00	0.00	-	-
07	Mining of metal ores	10.57	104.90	116.84	131.74	-10.2	-11.3
08	Other mining and quarrying products	67.83	44.10	62.87	61.70	-29.9	1.9
<b>C</b>	<b>MANUFACTURING</b>	<b>100.00</b>	<b>77.86</b>	<b>91.16</b>	<b>75.75</b>	<b>-14.6</b>	<b>20.3</b>
10	Food	22.06	73.31	79.09	85.39	-7.3	-7.4
11	Beverages	6.16	56.21	59.20	63.28	-5.1	-6.5
12	Tobacco products	0.97	100.98	90.73	92.69	11.3	-2.1
13	Textiles	0.89	52.50	60.86	53.57	-13.7	13.6
14	Wearing apparel	1.02	56.57	65.99	73.99	-14.3	-10.8
15	Leather and related products	0.34	33.74	39.59	48.14	-14.8	-17.8
16	Wood and cork	0.89	40.80	38.72	38.32	5.4	1.1
17	Paper and paper products	2.65	81.94	78.49	83.66	4.4	-6.2
18	Printing and recording services	1.72	47.22	51.91	57.03	-9.0	-9.0
19	Coke and refined petroleum products	31.51	96.12	114.09	80.09	-15.8	42.5
20	Chemicals and chemical products	4.60	83.74	69.04	76.20	21.3	-9.4
21	Basic pharmaceutical products and pharmaceutical preparations	2.45	84.54	90.79	111.45	-6.9	-18.5
22	Rubber and plastic products	3.01	69.56	71.73	72.69	-3.0	-1.3
23	Other non-metallic mineral products	5.66	39.06	41.64	42.89	-6.2	-2.9
24	Basic metals	5.72	74.31	189.58	42.69	-60.8	344.1
25	Fabricated metal products	3.47	61.43	55.49	58.35	10.7	-4.9
26	Computers, electronic and optical products	0.17	347.28	135.72	319.20	155.9	-57.5
27	Electrical equipment	1.82	64.08	68.21	79.28	-6.1	-14.0
28	Machinery and equipment n. e. c.	0.77	62.30	52.74	59.85	18.1	-11.9
29	Motor vehicles, trailers and semi-trailers	0.27	136.10	226.81	192.68	-40.0	17.7
30	Other transport equipment	0.40	139.89	146.89	162.83	-4.8	-9.8
31	Furniture	1.15	52.33	50.98	62.18	2.7	-18.0
32	Other manufactured goods	0.27	73.20	72.18	78.88	1.4	-8.5
33	Repair and installation services of machinery and equipment	2.03	92.35	100.01	102.16	-7.7	-2.1
<b>MAIN INDUSTRIAL GROUPINGS</b>							
1	Energy	31.37	95.81	113.50	79.75	-15.6	42.3
2	Intermediate goods	28.94	68.23	89.39	63.64	-23.7	40.5
3	Capital goods	5.20	86.43	91.58	93.78	-5.6	-2.4
4	Consumer Durables	1.74	82.12	62.39	88.88	31.6	-29.8
5	Consumer Non-Durables	32.75	66.61	71.76	78.63	-7.2	-8.7

\* Provisional data

Note: The indices and the percentage changes are rounded up to two and one decimal figures, respectively, when published.

**Table 3. Annual rates of change of the Turnover Index in Industry: Non-Domestic Market**

Base year: 2010=100.0

Code	Division	Weights	December			Rate of change (%)	
			2017*	2016	2015	2017/2016	2016/2015
<b>OVERALL INDEX</b>			<b>150.88</b>	<b>129.77</b>	<b>121.12</b>	<b>16.3</b>	<b>7.1</b>
<b>B</b>	<b>MINING AND QUARRYING</b>	<b>100.00</b>	<b>143.36</b>	<b>142.70</b>	<b>152.47</b>	<b>0.5</b>	<b>-6.4</b>
05	Mining of coal and lignite	0.10	0.00	0.00	0.00	-	-
06	Extraction of crude petroleum and natural gas <sup>(1)</sup>	0.00	-	-	-	-	-
07	Mining of metal ores	25.44	196.85	125.34	159.60	57.1	-21.5
08	Other mining and quarrying products	74.46	125.28	148.83	150.24	-15.8	-0.9
<b>C</b>	<b>MANUFACTURING</b>	<b>100.00</b>	<b>151.05</b>	<b>129.48</b>	<b>120.41</b>	<b>16.7</b>	<b>7.5</b>
10	Food	9.54	132.71	128.01	126.83	3.7	0.9
11	Beverages	0.98	104.96	100.36	87.62	4.6	14.5
12	Tobacco products	1.38	161.90	198.18	184.67	-18.3	7.3
13	Textiles	1.93	64.95	64.42	53.51	0.8	20.4
14	Wearing apparel	2.21	44.94	50.91	53.80	-11.7	-5.4
15	Leather and related products	0.15	22.48	46.26	35.25	-51.4	31.2
16	Wood and cork	0.37	84.97	57.15	71.34	48.7	-19.9
17	Paper and paper products	0.77	184.17	134.87	139.33	36.6	-3.2
18	Printing and recording services	0.07	359.98	268.30	201.74	34.2	33.0
19	Coke and refined petroleum products	39.47	185.45	145.84	133.93	27.2	8.9
20	Chemicals and chemical products	5.82	86.47	87.67	88.18	-1.4	-0.6
21	Basic pharmaceutical products and pharmaceutical preparations	3.07	265.20	173.60	177.89	52.8	-2.4
22	Rubber and plastic products	3.82	115.66	114.20	109.68	1.3	4.1
23	Other non-metallic mineral products	2.17	115.99	157.67	141.15	-26.4	11.7
24	Basic metals	18.67	131.16	106.90	89.04	22.7	20.1
25	Fabricated metal products	2.74	137.52	141.51	143.96	-2.8	-1.7
26	Computers, electronic and optical products	0.74	277.86	254.57	295.88	9.2	-14.0
27	Electrical equipment	3.80	96.66	107.51	105.01	-10.1	2.4
28	Machinery and equipment n. e. c.	1.13	194.21	240.84	204.61	-19.4	17.7
29	Motor vehicles, trailers and semi-trailers	0.29	57.69	65.62	37.73	-12.1	73.9
30	Other transport equipment	0.50	56.72	84.61	115.10	-33.0	-26.5
31	Furniture	0.17	294.60	208.41	214.20	41.4	-2.7
32	Other manufactured goods	0.21	213.97	194.41	165.99	10.1	17.1
33	Repair and installation services of machinery and equipment	0.00	-	-	-	-	-
<b>MAIN INDUSTRIAL GROUPINGS</b>							
1	Energy	38.60	185.44	145.84	133.92	27.2	8.9
2	Intermediate goods	38.39	119.41	107.79	101.44	10.8	6.3
3	Capital goods	3.16	170.37	216.98	167.05	-21.5	29.9
4	Consumer Durables	1.06	160.35	152.84	179.46	4.9	-14.8
5	Consumer Non-Durables	18.79	140.40	125.70	124.01	11.7	1.4

\* Provisional data

Note: The indices and the percentage changes are rounded up to two and one decimal figures, respectively, when published.

(1) The Index is not computed (base year value = 0).

**Table 4. Annual rates of change of the Turnover Index in Industry: Eurozone Countries**

Base year: 2010=100.0

Code	Sections and main groupings	December			Rate of change (%)	
		2017*	2016	2015	2017/2016	2016/2015
<b>OVERALL INDEX</b>		<b>136.27</b>	<b>121.94</b>	<b>120.69</b>	<b>11.8</b>	<b>1.0</b>
<b>INDUSTRIAL SECTIONS</b>						
<b>B</b>	MINING AND QUARRYING	154.90	160.97	140.15	-3.8	14.9
<b>C</b>	MANUFACTURING	135.75	120.86	120.15	12.3	0.6
<b>MAIN INDUSTRIAL GROUPINGS</b>						
<b>1</b>	Energy	202.69	142.95	189.39	41.8	-24.5
<b>2</b>	Intermediate goods	115.84	114.99	101.54	0.7	13.3
<b>3</b>	Capital goods	128.02	180.09	149.51	-28.9	20.5
<b>4</b>	Consumer Durables	119.03	125.85	110.08	-5.4	14.3
<b>5</b>	Consumer Non-Durables	144.76	118.72	122.31	21.9	-2.9

\* Provisional data

**Table 5. Annual rates of change of the Turnover Index in Industry: Non-Eurozone Countries**

Base year: 2010=100.0

Code	Sections and main groupings	December			Rate of change (%)	
		2017*	2016	2015	2017/2016	2016/2015
<b>OVERALL INDEX</b>		<b>158.12</b>	<b>133.65</b>	<b>121.33</b>	<b>18.3</b>	<b>10.2</b>
<b>INDUSTRIAL SECTIONS</b>						
<b>B</b>	MINING AND QUARRYING	135.44	130.15	160.93	4.1	-19.1
<b>C</b>	MANUFACTURING	158.57	133.72	120.54	18.6	10.9
<b>MAIN INDUSTRIAL GROUPINGS</b>						
<b>1</b>	Energy	183.45	146.17	127.52	25.5	14.6
<b>2</b>	Intermediate goods	122.11	102.35	101.37	19.3	1.0
<b>3</b>	Capital goods	192.73	236.45	176.31	-18.5	34.1
<b>4</b>	Consumer Durables	223.50	194.11	285.52	15.1	-32.0
<b>5</b>	Consumer Non-Durables	134.42	135.28	126.34	-0.6	7.1

\* Provisional data

Note: The indices and the percentage changes are rounded up to two and one decimal figures, respectively, when published.

**Table 6. Monthly rate of change of the Turnover Index in Industry: Total Market**

Base year: 2010=100.0

Code	Sections and main groupings	December 2017*	November 2017**	Rate of change (%) Dec. 2017/Nov. 2017
<b>OVERALL INDEX</b>		<b>100.21</b>	<b>100.20</b>	<b>0.01</b>
<b>INDUSTRIAL SECTIONS</b>				
B	MINING AND QUARRYING	91.10	111.16	-18.1
C	MANUFACTURING	100.37	100.02	0.4
<b>MAIN INDUSTRIAL GROUPINGS</b>				
1	Energy	127.63	117.92	8.2
2	Intermediate goods	87.29	99.69	-12.4
3	Capital goods	104.38	80.80	29.2
4	Consumer Durables	98.70	61.38	60.8
5	Consumer Non-Durables	81.72	85.07	-3.9

**Table 7. Monthly rate of change of the Turnover Index in Industry: Domestic Market**

Base year: 2010=100.0

Code	Sections and main groupings	December 2017*	November 2017**	Rate of change (%) Dec. 2017/Nov. 2017
<b>OVERALL INDEX</b>		<b>77.54</b>	<b>77.28</b>	<b>0.3</b>
<b>INDUSTRIAL SECTIONS</b>				
B	MINING AND QUARRYING	54.89	68.84	-20.3
C	MANUFACTURING	77.86	77.41	0.6
<b>MAIN INDUSTRIAL GROUPINGS</b>				
1	Energy	95.81	83.81	14.3
2	Intermediate goods	68.23	78.92	-13.6
3	Capital goods	86.43	58.33	48.2
4	Consumer Durables	82.12	46.06	78.3
5	Consumer Non-Durables	66.61	74.26	-10.3

**Table 8. Monthly rate of change of the Turnover Index in Industry: Non-Domestic Market**

Base year: 2010=100.0

Code	Sections and main groupings	December 2017*	November 2017**	Rate of change (%) Dec. 2017/Nov. 2017
<b>OVERALL INDEX</b>		<b>150.88</b>	<b>151.42</b>	<b>-0.4</b>
<b>INDUSTRIAL SECTIONS</b>				
B	MINING AND QUARRYING	143.36	172.25	-16.8
C	MANUFACTURING	151.05	150.95	0.1
<b>MAIN INDUSTRIAL GROUPINGS</b>				
1	Energy	185.44	179.89	3.1
2	Intermediate goods	119.41	134.69	-11.3
3	Capital goods	170.37	163.44	4.3
4	Consumer Durables	160.35	118.32	35.5
5	Consumer Non-Durables	140.40	127.02	10.5

\* Provisional data \*\* Revised data

Note: The indices and the percentage changes are rounded up to two and one decimal figures, respectively, when published.



**Table 9. Monthly rate of change of the Turnover Index in Industry: Eurozone Countries**

Base year: 2010=100.0

Code	Sections and main groupings	December 2017*	November 2017**	Rate of change (%) Dec. 2017/Nov. 2017
<b>OVERALL INDEX</b>		<b>136.27</b>	<b>157.99</b>	<b>-13.8</b>
<b>INDUSTRIAL SECTIONS</b>				
<b>B</b>	MINING AND QUARRYING	154.90	166.94	-7.2
<b>C</b>	MANUFACTURING	135.75	157.74	-13.9
<b>MAIN INDUSTRIAL GROUPINGS</b>				
<b>1</b>	Energy	202.69	295.28	-31.4
<b>2</b>	Intermediate goods	115.84	150.59	-23.1
<b>3</b>	Capital goods	128.02	152.65	-16.1
<b>4</b>	Consumer Durables	119.03	122.27	-2.7
<b>5</b>	Consumer Non-Durables	144.76	121.60	19.0

\* Provisional data      \*\*Revised data

**Table 10. Monthly rate of change of the Turnover Index in Industry: Non-Eurozone Countries**

Base year: 2010=100.0

Code	Sections and main groupings	December 2017*	November 2017**	Rate of change (%) Dec. 2017/Nov. 2017
<b>OVERALL INDEX</b>		<b>158.12</b>	<b>148.16</b>	<b>6.7</b>
<b>INDUSTRIAL SECTIONS</b>				
<b>B</b>	MINING AND QUARRYING	135.44	175.90	-23.0
<b>C</b>	MANUFACTURING	158.57	147.61	7.4
<b>MAIN INDUSTRIAL GROUPINGS</b>				
<b>1</b>	Energy	183.45	166.58	10.1
<b>2</b>	Intermediate goods	122.11	122.66	-0.5
<b>3</b>	Capital goods	192.73	169.13	14.0
<b>4</b>	Consumer Durables	223.50	112.29	99.0
<b>5</b>	Consumer Non-Durables	134.42	134.46	0.0

\* Provisional data      \*\* Revised data

Note: The indices and the percentage changes are rounded up to two and one decimal figures, respectively, when published.

**Table 11. Evolution of the Turnover Index in Industry (y-o-y changes): Total Market**

Base year: 2010=100.0

Year and month	Overall Index (Total Market)		Turnover Index in Industry for the Domestic Market		Turnover Index in Industry for the Non-Domestic Market	
	Index	Annual rate of change (%)	Index	Annual rate of change (%)	Index	Annual rate of change (%)
2016: 12	102.86	14.7	90.82	20.1	129.77	7.1
2017 **: 1	82.72	27.3	65.37	20.7	121.49	36.4
2	87.87	21.2	70.36	17.1	126.99	26.8
3	107.17	25.4	80.58	15.4	166.57	38.3
4	95.32	9.7	72.70	-5.4	145.88	33.4
5	104.97	19.8	83.55	14.8	152.83	26.4
6	98.03	9.1	81.53	3.3	134.90	18.2
7	100.11	8.8	83.20	7.9	137.91	10.0
8	89.34	6.1	73.98	-2.3	123.68	19.8
9	97.12	-0.8	80.47	2.6	134.32	-4.9
10	98.79	11.5	78.06	7.9	145.10	16.0
11	100.20	13.0	77.28	6.3	151.42	21.8
12*	100.21	-2.6	77.54	-14.6	150.88	16.3

\*Provisional data \*\* Revised data. The indices of the current year are revised after the inclusion of additional data from the enterprises.

**Table 12. Evolution of the Turnover Index in Industry (y-o-y changes): Non-Domestic Market**

Base year: 2010=100.0

Year and month	Overall Index (Non-Domestic Market)		Turnover Index in Industry for Eurozone Countries		Turnover Index in Industry for Non-Eurozone Countries	
	Index	Annual rate of change (%)	Index	Annual rate of change (%)	Index	Annual rate of change (%)
2016: 12	129.77	7.1	121.94	1.0	133.65	10.2
2017 **: 1	121.49	36.4	114.00	5.3	125.21	57.3
2	126.99	26.8	122.65	7.4	129.14	38.6
3	166.57	38.3	180.64	41.6	159.60	36.5
4	145.88	33.4	154.70	21.8	141.51	40.6
5	152.83	26.4	154.64	28.3	151.93	25.5
6	134.90	18.2	141.98	5.3	131.39	26.5
7	137.91	10.0	143.43	9.4	135.17	10.3
8	123.68	19.8	107.34	8.6	131.79	25.1
9	134.32	-4.9	129.64	-3.5	136.64	-5.5
10	145.10	16.0	142.30	23.4	146.49	12.8
11	151.42	21.8	157.99	28.1	148.16	18.8
12*	150.88	16.3	136.27	11.8	158.12	18.3

\*Provisional data \*\* Revised data. The indices of the current year are revised after the inclusion of additional data from the enterprises.

Note: The indices and the percentage changes are rounded up to two and one decimal figures, respectively, when published.

**Table 13. Average indices and rates of change (%) of the 12-month periods of Turnover Index in Industry: Total Market**  
**Base year: 2010=100.0**

Code	Division	Average Indices of 12-month periods			Rate of change (%) 2017/2016	Rate of change (%) 2016/2015
		Jan. 2017- Dec. 2017*	Jan. 2016- Dec. 2016	Jan. 2015- Dec. 2015		
	<b>OVERALL INDEX</b>	<b>96.82</b>	<b>86.80</b>	<b>91.38</b>	<b>11.6</b>	<b>-5.0</b>
<b>B</b>	<b>MINING AND QUARRYING</b>	<b>104.98</b>	<b>88.97</b>	<b>89.40</b>	<b>18.0</b>	<b>-0.5</b>
05	Mining of coal and lignite	122.11	65.54	156.31	86.3	-58.1
06	Extraction of crude petroleum and natural gas	-	-	-	-	-
07	Mining of metal ores	130.94	121.35	113.32	7.9	7.1
08	Other mining and quarrying products	107.68	91.97	86.92	17.1	5.8
<b>C</b>	<b>MANUFACTURING</b>	<b>96.68</b>	<b>86.76</b>	<b>91.41</b>	<b>11.4</b>	<b>-5.1</b>
10	Food	92.64	92.57	95.98	0.1	-3.6
11	Beverages	82.48	82.27	80.43	0.3	2.3
12	Tobacco products	114.86	125.35	122.69	-8.4	2.2
13	Textiles	72.64	68.38	66.26	6.2	3.2
14	Wearing apparel	48.07	50.03	52.52	-3.9	-4.8
15	Leather and related products	36.75	40.54	36.83	-9.4	10.1
16	Wood and cork	45.81	43.14	42.18	6.2	2.3
17	Paper and paper products	95.76	91.78	92.97	4.3	-1.3
18	Printing and recording services	47.31	53.77	54.09	-12.0	-0.6
19	Coke and refined petroleum products	110.31	89.15	101.82	23.7	-12.5
20	Chemicals and chemical products	99.43	94.84	95.53	4.8	-0.7
21	Basic pharmaceutical products and pharmaceutical preparations	114.48	102.93	100.65	11.2	2.3
22	Rubber and plastic products	103.78	100.67	104.97	3.1	-4.1
23	Other non-metallic mineral products	60.49	59.01	55.31	2.5	6.7
24	Basic metals	109.55	90.66	90.66	20.8	0.0
25	Fabricated metal products	83.80	80.72	76.05	3.8	6.1
26	Computers, electronic and optical products	146.75	128.25	141.04	14.4	-9.1
27	Electrical equipment	82.87	79.08	77.19	4.8	2.4
28	Machinery and equipment n. e. c.	85.03	83.62	86.30	1.7	-3.1
29	Motor vehicles, trailers and semi-trailers	87.64	72.11	70.67	21.5	2.0
30	Other transport equipment	77.18	105.94	99.87	-27.1	6.1
31	Furniture	50.89	51.63	48.84	-1.4	5.7
32	Other manufactured goods	96.11	90.32	85.30	6.4	5.9
33	Repair and installation services of machinery and equipment	57.05	52.37	57.11	8.9	-8.3
	<b>MAIN INDUSTRIAL GROUPINGS</b>					
1	Energy	109.97	88.78	101.64	23.9	-12.7
2	Intermediate goods	94.31	85.99	86.15	9.7	-0.2
3	Capital goods	74.25	73.10	70.86	1.6	3.2
4	Consumer Durables	61.30	59.42	61.52	3.2	-3.4
5	Consumer Non-Durables	89.64	89.04	90.01	0.7	-1.1

\*Provisional data

Note: The indices and the percentage changes are rounded up to two and one decimal figures, respectively, when published.

## METHODOLOGICAL NOTES

<b>Generally</b>	The Turnover Index is compiled since January 2006.
<b>Purpose of the index</b>	The purpose of this index is to measure the monthly activity of the industrial sector in terms of value. Turnover comprises the totals invoiced (without VAT) by the observation units during the reference period and corresponds to the market sales of goods or services supplied to third parties. The purposes and the characteristics of the Turnover Index apply, as well, to the indices for the distinction between domestic and non-domestic turnover.
<b>Legal basis</b>	The compilation and publication of the Turnover Index is based on the framework of requirements of Council Regulation (EC) No 1165/98 concerning short-term statistics (STS-R), as well as Regulation (EC) No 1158/05 of the European Parliament and Council amending Council Regulation (EC) No 1165/98. Furthermore, this index is governed by Regulation (EC) No 1893/2006 of the European Parliament and of the Council, by Commission Regulation (EC) No 656/2007 and by Regulation (EC) No 451/2008 of the Council.
<b>Reference period</b>	Month.
<b>Base year</b>	2010=100.0.
<b>Revision</b>	The latest revision of the Turnover Index in Industry (base year 2010=100.0) took place in the framework of Council Regulation (EC) No 1165/98 concerning short-term statistics. In accordance with this regulation the index is revised every five years, in years ending in 0 or 5.
<b>Statistical classifications</b>	At the level of categories of economic activities, the classification of NACE Rev. 2 was used (Regulation No 1893/2006), while at the level of main industrial groups, the allocation of two-digit and three-digit NACE Rev. 2 headings to categories of aggregate classification was used, in accordance with Commission Regulation No 656/2007. At product level, the Eurostat classification CPA 2008 was used, pursuant to Council Regulation No 451/2008.
<b>Geographical coverage</b>	The Index covers the whole Country.
<b>Coverage of economic activities</b>	The Turnover Index in Industry covers the whole country and is compiled for all activities listed in Sections C (mining and quarrying) and D (manufacturing) of the NACE Rev.2 classification.
<b>Computation of the Index</b>	The Turnover Index in Industry is a fixed base index. This index is calculated at a first stage at the four-digit level of economic activity and subsequently, with the implementation of appropriate weighting coefficients, the index is calculated at higher levels (three-level, two-level and one-level of economic activity) or at the level of Main Industrial Groupings (MIGs).
<b>Publication of data</b>	The Turnover Index in Industry (2010=100.0) is released since November 2014 with September 2014 as first reference month. Data with base year 2010=100.0 are available from January 2000 onwards.
<b>References</b>	More information about the methodology concerning the compilation and calculation of the index and for the time series is available on the website of the Hellenic Statistical Authority (ELSTAT) ( <a href="http://www.statistics.gr/en/statistics/-/publication/DKT24/">http://www.statistics.gr/en/statistics/-/publication/DKT24/</a> ).