



ISSUING OF MOTOR VEHICLE LICENSES: JANUARY 2024

The Hellenic Statistical Authority announces that in January 2024, 22,539 road motor cars (both new and used from abroad) were put into circulation for the first time, recording a 6.7% increase compared with the corresponding month of 2023 when the number of road motor cars was 21,129. In January 2023, a 50.4% increase had been observed in comparison with the corresponding month of 2022 (Table 1, Graphs 1,2,3,5). A total number of 13,708 new cars were put into circulation in January 2024 compared with 11,638 in January 2023, recording a 17.8% increase.

The new motorcycles over 50cc (both new and used from abroad) that were put into circulation for the first time in January 2024 amounted to 4,953, against 4,187 in 2023, thus recording an 18.3% increase. In January 2023, a 79.6% increase had been observed in comparison with the corresponding month of 2022 (Table 1, Graph 4). Out of the above motorcycles 4,639 were new, while the corresponding figure in January 2023 was 3,864, recording a 20.1% increase.

Information on methodological issues:

Sectoral Statistics Division

Transport Statistics Section

Elpida Kleftogianni, Konstantinos Menexes

Tel: +30 213 135 3087, +30 213 135 3055

e-mail: e.kleftogianni@statistics.gr, k.menexes@statistics.gr

Information for data provision:

Tel: +30 213 135 2022

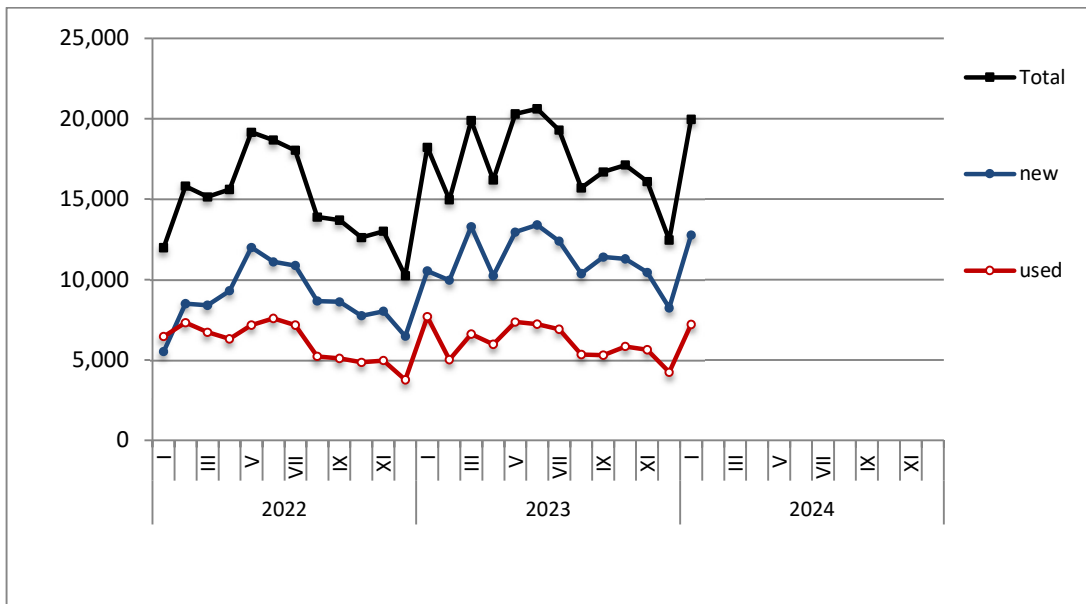
e-mail: data.dissem@statistics.gr

Table 1. Road motor vehicles, both new and used, put into circulation for the first time in Greece: January 2022 - 2024															
Category of Road Motor Vehicles	January									Change (%)					
	2022			2023			2024			2023/2022			2024/2023		
	Total	New	Used	Total	New	Used	Total	New	Used	Total	New	Used	Total	New	Used
Greece, total															
Road Motor Vehicles, total	16,375	8,149	8,226	25,316	15,502	9,814	27,492	18,347	9,145	54.6%	90.2%	19.3%	8.6%	18.4%	-6.8%
1. Road motor cars	14,044	6,057	7,987	21,129	11,638	9,491	22,539	13,708	8,831	50.4%	92.1%	18.8%	6.7%	17.8%	-7.0%
Passenger Cars	11,977	5,522	6,455	18,218	10,533	7,685	19,966	12,762	7,204	52.1%	90.7%	19.1%	9.6%	21.2%	-6.3%
Buses	69	2	67	130	23	107	78	32	46	88.4%	1050.0%	59.7%	-40.0%	39.1%	-57.0%
Lorries	1,998	533	1,465	2,781	1,082	1,699	2,495	914	1,581	39.2%	103.0%	16.0%	-10.3%	-15.5%	-6.9%
2. Motorcycles > 50 cc	2,331	2,092	239	4,187	3,864	323	4,953	4,639	314	79.6%	84.7%	35.1%	18.3%	20.1%	-2.8%
Prefecture of Attica															
Road Motor Vehicles, total	7,695	4,901	2,794	14,213	10,167	4,046	15,485	11,961	3,524	84.7%	107.4%	44.8%	8.9%	17.6%	-12.9%
1. Road motor cars	6,455	3,735	2,720	11,908	7,978	3,930	12,834	9,443	3,391	84.5%	113.6%	44.5%	7.8%	18.4%	-13.7%
Passenger Cars	5,773	3,432	2,341	10,675	7,282	3,393	11,784	8,845	2,939	84.9%	112.2%	44.9%	10.4%	21.5%	-13.4%
Buses	21	1	20	79	19	60	43	23	20	276.2%	1800.0%	200.0%	-45.6%	21.1%	-66.7%
Lorries	661	302	359	1,154	677	477	1,007	575	432	74.6%	124.2%	32.9%	-12.7%	-15.1%	-9.4%
2. Motorcycles > 50 cc	1,240	1,166	74	2,305	2,189	116	2,651	2,518	133	85.9%	87.7%	56.8%	15.0%	15.0%	14.7%

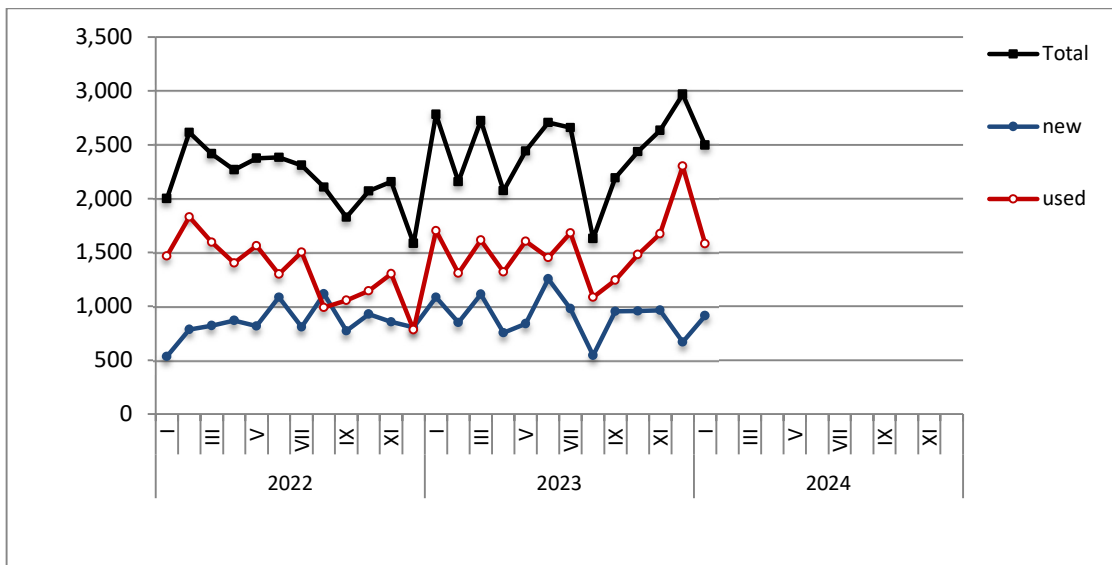
Table 2. Road motor vehicles, both new and used, put into circulation for the first time in Greece: February 2022 - January 2024

Category of Road Motor Vehicles	Average Feb. 2022 - Jan 2023			Average Feb. 2023 - Jan 2024			Change (%)		
							Average Feb. 2023 - Jan 2024 / Average Feb. 2022 - Jan 2023		
	Total	New	Used	Total	New	Used	Total	New	Used
Greece, total									
Road Motor Vehicles, total	22,831	14,890	7,941	25,809	17,860	7,949	13.0%	20.0%	0.1%
1. Road motor cars	17,685	10,104	7,581	19,960	12,311	7,649	12.9%	21.8%	0.9%
Passenger Cars	15,340	9,186	6,155	17,443	11,391	6,052	13.7%	24.0%	-1.7%
Buses	104	24	81	92	23	69	-11.7%	-2.1%	-14.5%
Lorries	2,240	894	1,346	2,425	897	1,528	8.3%	0.3%	13.5%
2. Motorcycles > 50 cc	5,146	4,786	360	5,849	5,549	300	13.7%	15.9%	-16.7%

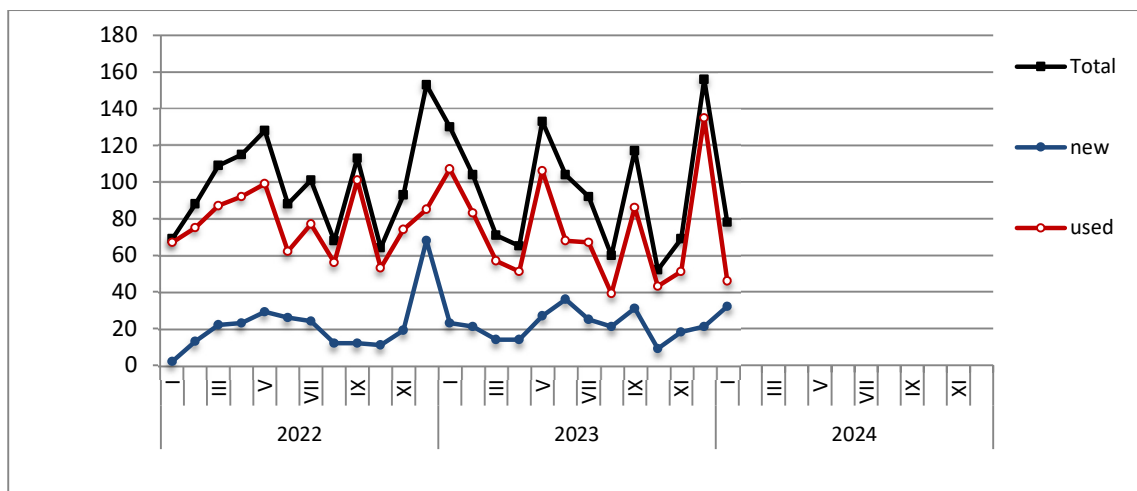
Graph 1: Passenger Cars (January 2022 - January 2024)



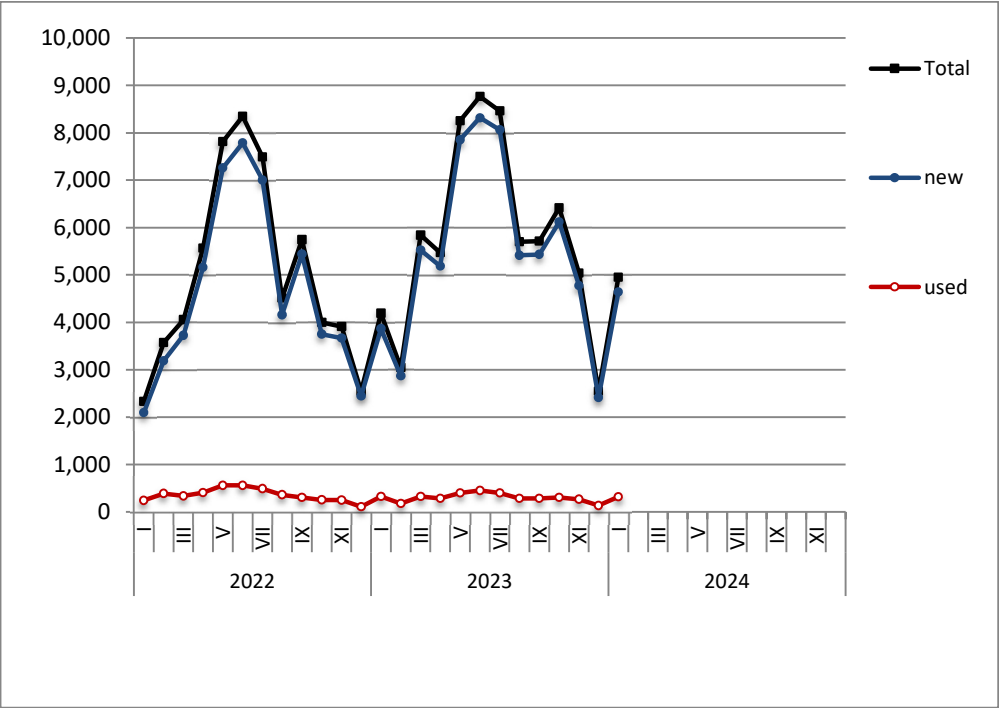
Graph 2: Lorries (January 2022 - January 2024)



Graph 3: Buses (January 2022 - January 2024)



Graph 4: Motorcycles (January 2022 - January 2024)



Graph 5: New Registrations of Motor Vehicles (January 2024)

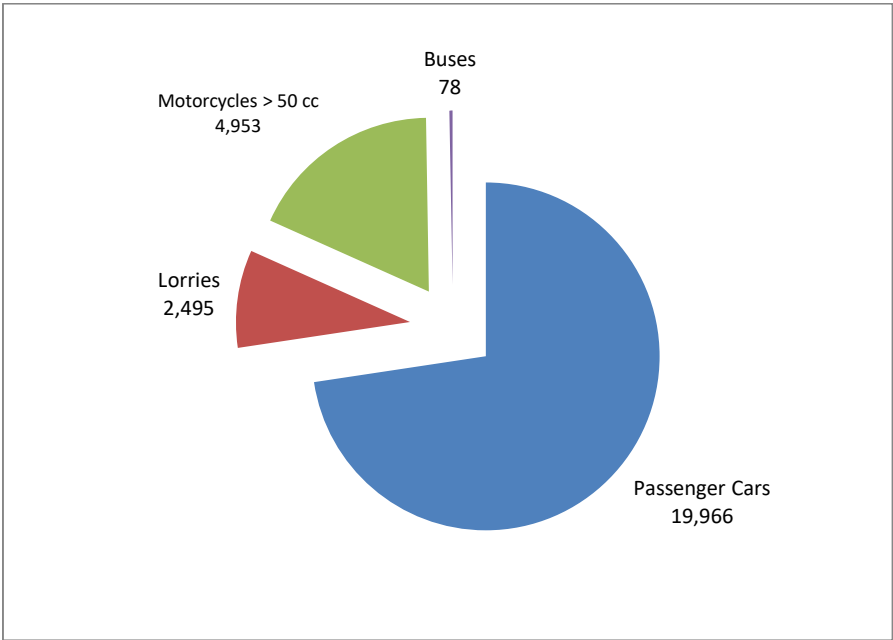


Table 3
Sales of new and used passenger cars by make: January 2024

Make	Passenger cars	
	January	
	new	used
ALFA ROMEO	45	38
AUDI	430	148
BMW	529	272
BURSTNER	-	2
CAPRON	7	3
CHEVROLET	-	17
CITROEN	220	240
CITROEN / DS	1,058	26
CUPRA	78	-
DACIA	104	172
DETHLEFFS	-	4
DODGE	-	1
DS	98	8
FERRARI	-	3
FIAT	389	314
FORD	312	496
FORD ²	1	-
HOBBY	-	1
HONDA	27	71
HYMER	-	1
HYUNDAI	805	633
INFINITI	-	4
JAGUAR	8	12
JEEP	145	55
KIA	417	147
KNAUS	-	1
LADA	-	1
LAMBORGHINI	-	2
LANCIA	-	3
LAND ROVER	66	65
LEXUS	21	5
MASERATI	1	-
MAZDA	197	29
MCLAREN	-	1
MERCEDES	252	563
MG	40	-
MG, ROEWE	376	1
MINI	93	66
MITSUBISHI	9	80
NISSAN	450	540
NISSAN ¹	6	-
OPEL	917	503
PEUGEOT	1,281	398
PEUGEOT ²	10	-
PORSCHE	12	66
RANGE ROVER	-	5
RENAULT	140	712
ROLLER TEAM	-	1

Table 3 (cont)
Sales of new and used passenger cars by make: January 2024

Make	Passenger cars	
	January	
	new	used
SEAT	103	54
SERES, DFSK, SOKON, AITO	5	-
SKODA	497	179
SMART	10	128
SUBARU	3	13
SUZUKI	926	154
TESLA	57	4
TOYOTA	1,952	579
TRIGANO	-	3
VOLKSWAGEN	573	353
VOLVO	91	27
VOYAH	1	-
TOTAL	12,762	7,204

- 1 : With 2nd/3rd stage manufacturer in Greece.
2 : With 2nd/3rd stage manufacturer abroad.

Graph 6. Sales of new passenger cars by make (January 2024)

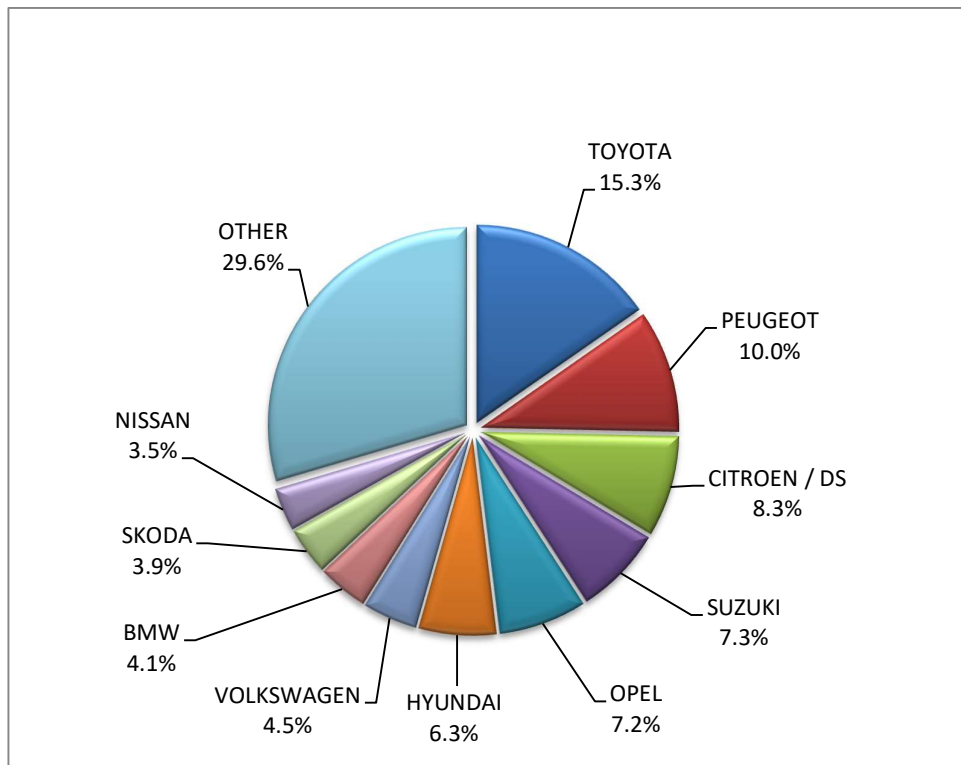


Table 4
Sales of new and used lorries by make: January 2024

Make	Lorries	
	January	
	new	used
CHRYSLER	-	3
CITROEN	98	42
DACIA	1	5
DAF	-	42
DENNIS EAGLE	-	1
DODGE	-	5
FIAT	87	102
FIAT-IVECO	-	1
FORD	138	267
HYUNDAI	-	1
ISUZU	31	30
IVECO	4	21
IVECO ¹	5	-
JEEP	4	3
LAND ROVER	-	1
MAN	-	100
MAN ¹	1	-
MAXUS, LDV	8	-
MERCEDES	19	400
MERCEDES ¹	1	-
MITSUBISHI	1	53
MITSUBISHI ¹	3	-
NISSAN	6	45
OPEL	62	54
PEUGEOT	127	56
PIAGGIO	2	2
PIAGGIO ¹	1	-
RENAULT	23	93
SCANIA	16	56
SCATTOLINI, NISSAN	-	1
SSANGYONG	-	1
SUZUKI	18	-
TOYOTA	185	56
VOLKSWAGEN	48	69
VOLVO	19	71
VOLVO ¹	6	-
TOTAL	914	1,581

1 : With 2nd/3rd stage manufacturer in Greece.

2 : With 2nd/3rd stage manufacturer abroad.

Graph 7. Sales of new lorries by make (January 2024)

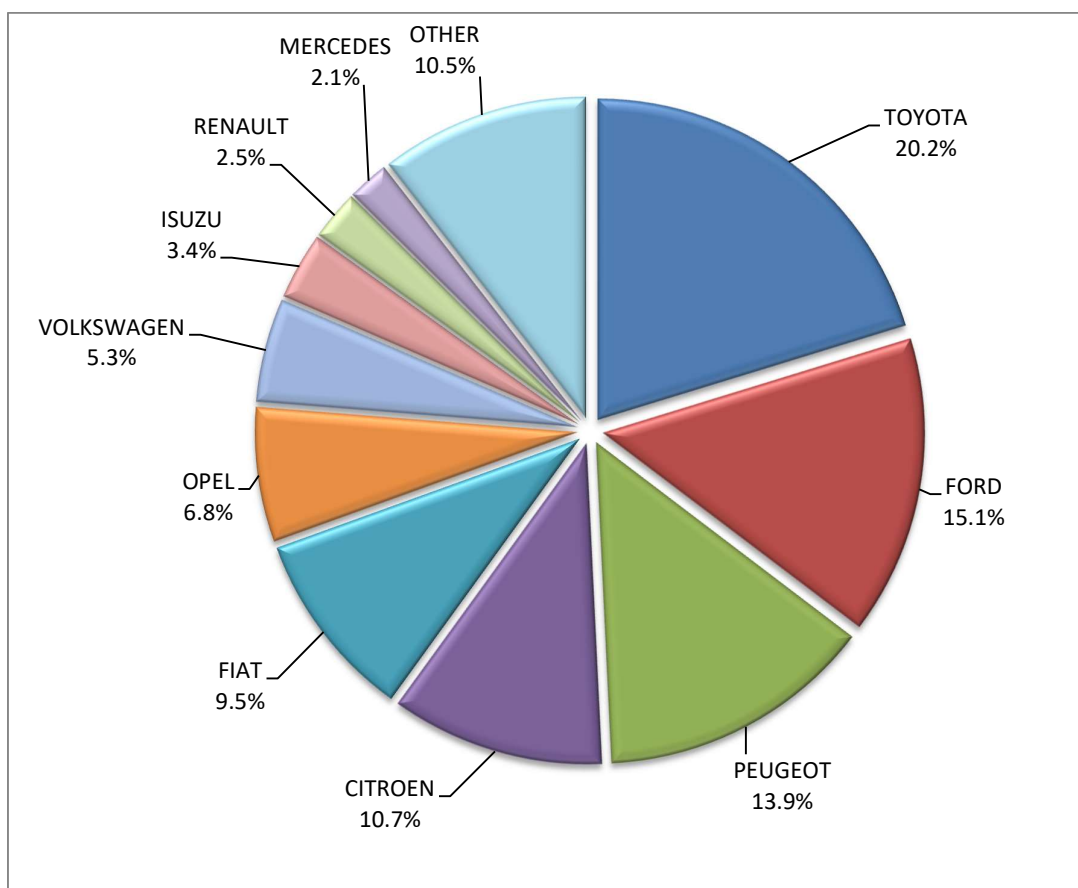


Table 5
Sales of new and used buses by make: January 2024

Make	Buses	
	January	
	new	used
BOVA	-	3
FORD	-	2
ISUZU, AOS, GLOBUS	1	-
IVEKO ²	1	-
MAN	12	2
MAN/NEOPLAN	-	1
MERCEDES	3	29
MERCEDES ¹	13	-
NEOPLAN	-	2
OTOKAR	-	1
SETRA	1	6
TEMSA	1	-
TOTAL	32	46

1 : With 2nd/3rd stage manufacturer in Greece.

2 : With 2nd/3rd stage manufacturer abroad.

Table 6
Sales of new and used motorcycles by make or manufacturer: January 2024

Make	Motorcycles	
	January	
	new	used
AJP	1	-
APRILIA	31	3
APRILIA, SCARABEO	-	1
ARMONY,ARORA, BUKE, BULL MOTORS	7	-
BASHAN	-	1
BASHAN, AMGroup, AMGroup Bike, DON, IRBIS, WORKER BEAR, Nomik ATV 2	1	-
BENELLI	106	-
BETA	10	2
BMW	76	50
BRIXTON	7	-
CFMOTO	93	-
CFMOTO, CSR, QUAZILLA	-	1
CFMOTO, KEEWAY	8	-
DAYANG, DAYTONA MOTORS, NIPPONIA, DOCKER, WAYEL, SUMCO, VEEROAD, CETUR, RUTEC, ZENKO	2	-
DAYANG, DAYTONA MOTORS, NIPPONIA, DYMOTO, VEEROAD, EVO MOTORS, MH MOTORCYCLES, FKM, FKMOTORS,	13	-
DAYANG, DAYTONA MOTORS, NIPPONIA, DYMOTO, VEEROAD, EVO MOTORS, MH MOTORCYCLES, FKM, FKMOTORS, KUBA	1	-
DAYANG, DAYTONA MOTORS, NIPPONIA, KUBA, VEEROAD, SUMCO, CETUR, RUTEC	79	-
DAYANG, DAYTONA MOTORS, NIPPONIA, VEEROAD	51	-
DAYANG, DAYTONA MOTORS, NIPPONIA, VEEROAD, DOCKER	46	-
DAYANG, DAYTONA MOTORS, NIPPONIA, VEEROAD, RUTEC, CETUR	76	-
DAYANG, DYMOTO, DAYTONA MOTORS, NIPPONIA, MH MOTORCYCLES, ORCAL, SUMCO, KUBA, RKS, RUTEC	6	-
DAYANG, ECOCREMO, ECOOTER, ECOOTOR, AGM, ORCAL, SUMCO	2	-
DAYANG, NIPPONIA, DAYTONA MOTORS, VEEROAD, SUMCO, DOCKER, MH MOTORCYCLES	2	-
DAYTONA	7	-
DAYTONA MOTORS, DAYANG, DYMOTO, NIPPONIA, MH MOTORCYCLES, ORCAL, SUMCO, RUTEC, AJS	5	-
DAYTONA MOTORS, DAYANG, NIPPONIA, DYMOTO, DOCKER, VEEROAD, EVO MOTORS, SUMCO, CETUR, HANSOM, RUTEC	5	-
DAYTONA MOTORS, EVO MOTORS, LONGJIA, ORCAL, NECO, VGA, ROMET MOTORS, DRAX, MONDIAL, JUNAK, ONLINE	1	-
DAYTONA MOTORS, YINGANG, KUBA, RKS, SKYJET, MAGPOWER, MITT, VENTUR, ARCHIVE MOTORCYCLE	1	-
DAYTONA MOTORS, ZONTES, TAYO, KIDEN, Haojiang, ZHONGYU, Sharpon, TANNY, TYAN, Senke, B BETA	22	-
DONGBEN, GANCIN, DIRONG, KRAL	1	-
DUCATI	9	11
E.F.O., GOLDEN LION, SAKURA, ARTISAN, Fauro, ETALIAN, Viverra, Varaneo, Kito, E-mio, velca, E-KUMA, BOLIDE	1	-
ECOOTER, ETRIX, AGM, DRAX, ORCAL, SUMCO	3	-
EFUN, ZAP	3	-
EFUN, ZAP, FRISON, easy-watts	6	-
FANTIC MOTOR	2	-
FD MOTORS, FASPIDER, DAYTONA MOTORS, EVO Motors, Veeroad	1	-
FD MOTORS, FASPIDER, DAYTONA MOTORS, NIPPONIA, QUANTYA	5	-
GASGAS	6	-
GENERIC, EXPLORER, MALANCA, KSR Moto Austria, Motron Motorrad	3	-
GPX	16	-

Table 6 (cont)
Sales of new and used motorcycles by make or manufacturer: January 2024

Make	Motorcycles	
	January	
	new	used
GUSITE, RKS, KUBA, KOKO, KAVIR, BECANE, EVO MOTORS, DAYTONA MOTORS, SUMCO, SKYJET	4	-
Haojiang, ZONTES,TAYO, Sharpon, IFINO, KIDEN, ZHONGYU, CUBTOM, DIYUN, NAMIN, TIM DERVI, VUKA, THUMP, R-ipper	8	-
HARLEY DAVIDSON	-	19
HONDA	1,052	37
HORWIN	1	-
HUSQVARNA	11	4
HYOSUNG	1	-
INDIAN MOTORCYCLE	1	1
JIAYUAN	14	-
JINMA, RUNHORSE, FARAD, hopster, DuroCar	1	-
JNEN, JUNENG, ZIPP, MOTORAN, HORS	3	-
JNEN, JUNENG, ZIPP, MOTORAN, HORS, FLEX TECH, RAZZO, TOROS, ONE, JUNAK	6	-
JNEN, JUNENG, ZIPP, MOTORAN, ONE, RAZZO, FLEX TECH, TOROS, JUNAK, TURBHO, PEZAL	8	-
JONWAY, SHENKE, HUIBANG, JMSTA	1	-
KAMAX	1	-
KAWASAKI	13	11
KEEWAY	3	-
KEEWAY, LONGJIA	10	-
KSR MOTO AUSTRIA, MOTRON MOTORRAD	2	-
KTM	66	30
KUBA, MH MOTORCYCLES, MGB, SHINERAY, DAYTONA MOTORS, MASH	3	-
KYMCO	124	27
Lingzhida, LINZDA, LINDN, LINYI, LONGMAO, NLIGHT	2	-
LONCIN, KINLON, LONGTING, KUBA, YUKI, MONDIAL, STMAX, KANUNI, MOTORAN, ASYA, QUSWA, PUMAREX, RALLY USA, MOD, CCM	11	-
LONCIN, KUBA, RKS, ITALIKA, SUNRACE, SKY, MALAGUTI, SUPERBIKE, ROCKET, NOVELBAT, TIGREMOTO, GREEN	1	-
LONCIN, KUBA, RKS, ITALIKA, VOGUE, SUNRACE, SKY, MALAGUTI, ROCKET, SUPERBIKE, NOVELBAT, TRIDIAMOND	22	-
LONCIN, VOGUE	5	1
LONCIN, VOGUE, KUBA, RKS , ITALIKA, SUNRACE, SKY, MALAGUTI, SUPERBIKE, ROCKET, NOVELBAT, TIGREMOTO, GREEN	3	-
LONCIN, VOGUE, VOGEPRO	46	-
LONGJIA, ORCAL, NECO, ALFASCOOTERS, VGA, ROMET MOTORS, BARTON MOTORS, OVER, CAROLYN, KANUNI, BTC	19	-
LONGJIA, ORCAL, NECO, VGA, ROMET MOTORS	21	-
LONGJIA, VICTORIA, VICTORIA MOTORRAD, ORCAL, NECO, VGA, BTC, ALFASCOOTERS. ROMET MOTORS	42	-
LVNENG	2	-
LONGJIA, ZUNDAPP, VGA, NECO, BTC, ALFASCOOTERS, ROMET MOTORS	4	-
MACBOR, RVM, COLOVE, ORCAL, DAYTONA MOTORS, ZF-KY, Lexmoto, OVER BIKES, YUKI, AJS	7	-
MALAGUTI	39	-
MBK	-	2
MGK HM	124	-
MODENAS	-	1
MOTO GUZZI	5	1
MOTO MORINI	4	-
NIU, NUUV	2	-

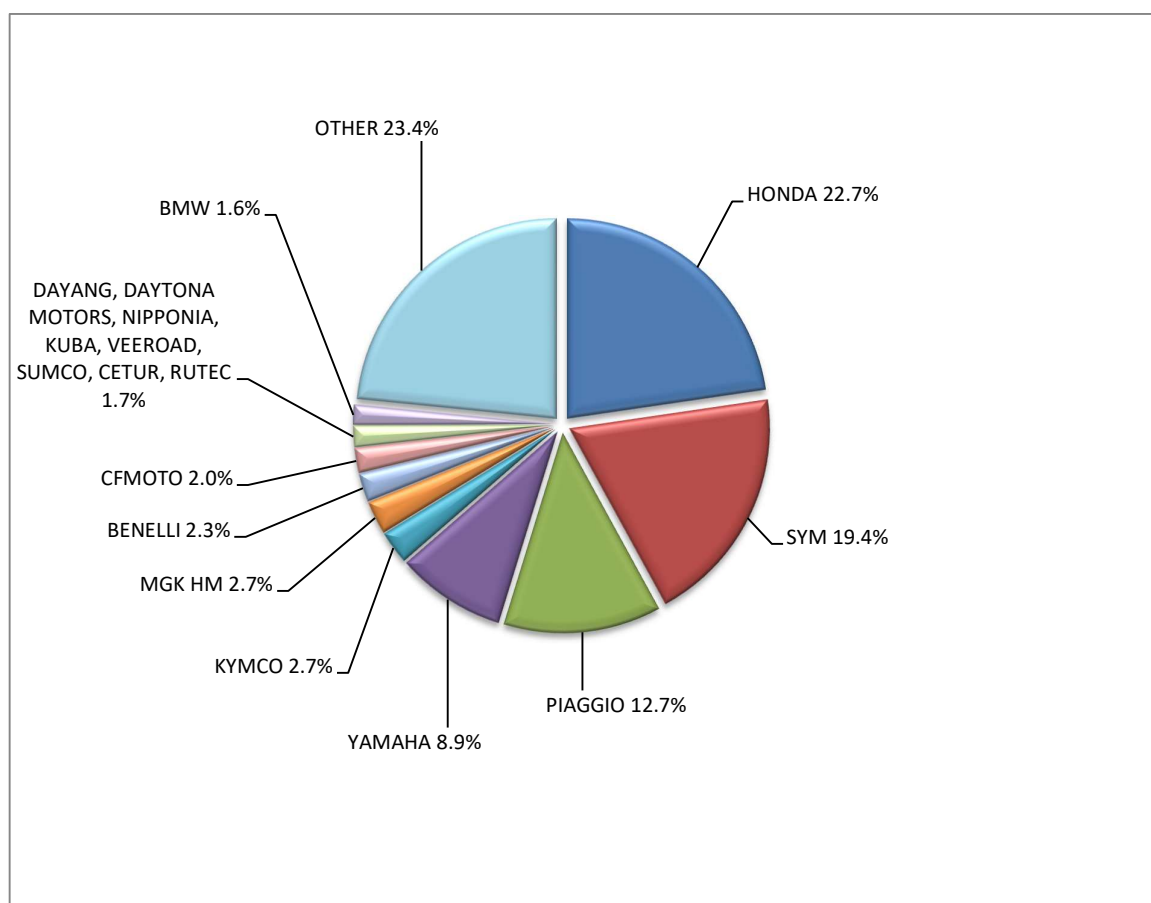
Table 6 (cont)
Sales of new and used motorcycles by make or manufacturer: January 2024

Make	Motorcycles	
	January	
	new	used
ODES	2	-
PEUGEOT	15	1
PIAGGIO	590	16
PILOTCAR	1	-
POLARIS	2	3
QJ, QJIANG, QJMOTOR, B MOTOB	25	-
QJ, QJIANG, QJMOTOR, B MOTOB, QJTEC	19	-
REDMOTO	1	-
RIEJU	1	-
ROYAL ENFIELD	19	2
Royalloy, Royal Alloy, RA	2	-
SAKURA, GOLDEN LION, ARTISAN, Fauro, ETALIAN, Viverra, Varaneo, Kito, E-mio, velca, E.F.O, E-KUMA, BOLIDE, LINZE	2	-
SCUTUM, ETRIX, SILENCE	3	-
SEGWAY	4	-
SHANYANG, ATLAS PANTHER, YAMAZUKI MOTO, MOTORKING, Hirlee, XB	3	-
SHERCO	3	2
SHINERAY, SWM	1	-
SILENCE, SCUTUM, ETRIX	2	-
SKYTEAM, SACIN, CSR, METALCO, SOKUDO, BAZUKA, MINICO, MOTOSBASI, MOTOS BORDOY, SUMKO, ROXON, MONKEY BIKES	2	-
SURRON	1	-
SUZUKI	28	18
SYM	898	10
TARO, JUNAK, BARTON MOTORS ,ORCAL, Lexmoto	15	-
TARO, JUNAK, BARTON MOTORS, ORCAL, Lexmoto, MITT, NECO, WOTTAN, MAGPOWER, ADAMOTO, MAXON, MAX-ON, TRMOTOR, CHUANL	6	-
TARO, TRMOTOR, CHUANL, JUNAK, BARTON MOTORS, Lexmoto, MITT, NECO, MAXON, MAX-ON, MOTOB, MOTO B, OVER BIKES	1	-
TARO, TRMOTOR, CHUANL, JUNAK, BARTON MOTORS, ORCAL, Lexmoto, MITT, NECO, WOTTAN, MAXON, MAX-ON, MOTOB	2	-
TARO,TRMOTOR, CHUANL, JUNAK, BARTON MOTORS, ORCAL, Lexmoto, MITT, NECO, WOTTAN, MAGPOWER, ADAMOTO MOTORCYCLES	2	-
TAYO, HAOJIANG, ZHONGYU, THUMP, THUMPSTAR, KIDEN, ZONTES, Junak, SENKE, TANNY, TYAN, ROMET, ROMET MOTORS	11	-
TAYO, ZONTES, KIDEN, Haojiang, ZHONGYU, Sharpon, TANNY, TYAN, Senke, BETA, DAYTONA MOTORS	25	-
TEYIN, TIANYING, XINBEN, SANBEN, ALFASCOOTERS, Alpha Motors, APACHI	4	-
TIANYING, RIYA, HONGYUNDA, TYM, HONLING, SANBEN, XINBEN, TAMCO, ALISON, DMK MOTORS	3	-
TIANYING, RIYA, HONGYUNDA, TYM, SANBEN, XINBEN, TAMCO, ALISON, DMK MOTORS, WLIE, LEEWAY, WLXQ	2	-
TM RACING	1	-
TRIUMPH	43	2
UM	14	-
VELIMOTOR, VOLTAMP, ALTUX, KKL HITECH, WHEELN WATER TECH, ALTUS, NUVEAU MONDE, EN MOTO, YUBEE MOTORS, KKL	1	-
VMOTO-SOCO, E-MAX, VMOTO, SUPER SOCO	6	-
VOGE, LONCIN, VOGEPRO	3	-
VOLTA, VTA, REVOLT	1	-
WANGYE, SANBEN, UM, KENOS, SUPERBYKE, MDC, MISTRAL	6	-
WONJAN,THRUST MOTOR, WMOTO, KEEWAY, TD	23	-

Table 6 (cont)
Sales of new and used motorcycles by make or manufacturer: January 2024

Make	Motorcycles	
	January	
	new	used
XEV, X, XEV YOYO	11	-
XINRI, SUNRA ,APACHI, ISILDAR, ISILDAR APACHI, Wayscral, KRAL	4	-
YAMAHA	411	55
YAMAHA, MBK	-	2
ZERO MOTORCYCLES	2	-
ZHONGNENG, ZNEN, AGM, BTC, CLS, COLIBRI, DAYTONA MOTORS, DERRACE, DOCKER, JM MOTORS, KUBA, La souris, LEXMOTO	10	-
ZXMCO, NIJ, DAYTONA MOTORS, PINK	1	-
TOTAL	4,639	314

Graph 8. Sales of new motorcycles (January 2024)



EXPLANATORY NOTES

Survey on the issuing of new road motor vehicle circulation licenses	The survey on the issuing of new motor vehicle circulation licenses is a census survey. The released data give information, at country level, on the brand and type of the motor vehicle, as well as whether it is new or used. The survey does not include vehicles that move on rails, trolley busses, agricultural tractors and machinery. In addition, the following are excluded: all motor vehicles of the Armed Forces, Police, Fire Brigade, State Services, Diplomatic Corps, Foreign Missions, and Invalids of Wars, as well as motorcycles with a cylinder capacity less than 50 cc.
Legal basis	Law 3832/2010
Reference Period	January 2024
Coverage	The production of monthly data is based on the registers held by the Ministry of Infrastructure, Transport and Networks, which records all the monthly changes observed in the vehicle registration licenses at country level.
Definitions	<p>Road motor vehicle is any vehicle that, irrespective of the number of wheels, is moved by an engine and is designed to transport persons or cargo or both of them, either they are on the same single vehicle or on a trailer carried by the main motor vehicle.</p> <p>New road motor vehicle is any motor vehicle that is registered for the first time in Greece during the reference month and has not been put into circulation in any other country.</p> <p>Used motor vehicle is any motor vehicle that is registered for the first time in Greece and has been imported as a used one from abroad</p> <p>Passenger motor vehicle: it is a motor vehicle designed to carry mostly people, having no more than 9 seats, including the driver's seat.</p> <p>Bus: it is a motor vehicle, which is designed to carry mostly people, having more than 10 seats, including the driver's seat. In the corresponding tables of this announcement, this category also includes articulated buses.</p> <p>Lorry: it is motor vehicle designed to carry mostly cargo. In the corresponding tables of this announcement, this category also includes tractors, tow trucks, articulated tractors, and trucks with trailers.</p> <p>Motorcycle: any two-wheeled motor vehicle, with or without sidecar, with maximum authorized design speed over 45 km/h, or in case it is powered by a combustion engine, with a cylinder capacity of 50 cc or over. In the corresponding tables of this announcement, this category also includes the three-wheeled motor vehicles – motor tricycles.</p> <p>Tricycle motor vehicle: it is a motor vehicle with three symmetrical wheels with maximum authorized design speed over 45 km/h, or in case it is powered by a combustion engine, with a cylinder capacity over the 50 cc. This category also includes four-wheel vehicles, except the light four-wheel motorcycles, whose empty vehicle tare (excluding the weight of the fuel or mixture of fuel-oil or the weight of the batteries for electric cars) is up to 400 kg in the case the vehicle is designed for passenger use or up to 550 kg in case the vehicle is designed to carry cargo and whose engine is up to 15KW.</p>
Methodology	Exhaustive Survey. The primary data derive from the Ministry of Infrastructure, Transport and Networks and are based on the issuing of new circulation licenses as they are registered by the Regional Offices for Transport and Communications.
References	More information (graphs, tables) concerning the survey on the issuing of new motor vehicle circulation licenses are available on the webpage of ELSTAT, www.statistics.gr , under the link http://www.statistics.gr/en/statistics/-/publication/SME24/-