



## **ISSUING OF MOTOR VEHICLE LICENSES: MAY 2026**

The Hellenic Statistical Authority announces that in May 2026, 26,897 road motor cars (both new and used from abroad) were put into circulation for the first time, recording an increase of 3.2% compared with the corresponding month of 2025 when the number of road motor cars was 26,051. In May 2025, a 13.5% increase had been observed in comparison with the corresponding month of 2024 (Table 1 - Graphs 1,2,3,5). A total number of 17,218 new cars were put into circulation in May 2026 compared with 16,745 in May 2025, recording an increase of 2.8%.

Motorcycles over 50cc (both new and used from abroad) that were put into circulation for the first time in May 2026 amounted to 10,439, against 9,860 in May 2025, thus recording a 5.9% increase. In May 2025, a 24.4% increase had been observed in comparison with the corresponding month of 2024 (Table 1 - Graph 4). Out of the above, 10,016 motorcycles were new, while the corresponding figure in May 2025 was 9,461, recording a 5.9% increase.

During the period January - May 2026, 116,558 road motor cars (both new and used from abroad) were put into circulation for the first time, representing an increase of 3.3% compared to the corresponding period of 2025 when the number of road motor cars was 112,854. During the period January - May 2025 an increase of 2.4% had been observed in comparison with the corresponding period of 2024 (Table 3 - Graphs 6,7). Out of the above, 70,210 road motor cars put into circulation from January to May 2026 were new, while the corresponding number during the respective period of 2025 was 68,202, recording an increase of 2.9%.

During the period January - May 2026 the motorcycles over 50cc (both new and used from abroad) were put into circulation for the first time amounted to 35,141 against 32,267 in the respective period of 2025, thus representing an 8.9% increase. An increase of 3.6% had been observed during the period January - May 2025 in comparison with the corresponding period of 2024 (Table 3 - Graphs 6,7). A total number of 33,407 new motorcycles were put into circulation, from January to May 2026, compared with 30,697 during the corresponding period of 2025, recording an 8.8% increase.

*Information on methodological issues:*

*Sectoral Statistics Division*  
*Transport Statistics Section*

Elpida Kleftogianni

Tel: +30 213 135 3087

e-mail: [e.kleftogianni@statistics.gr](mailto:e.kleftogianni@statistics.gr)

Information for data provision:

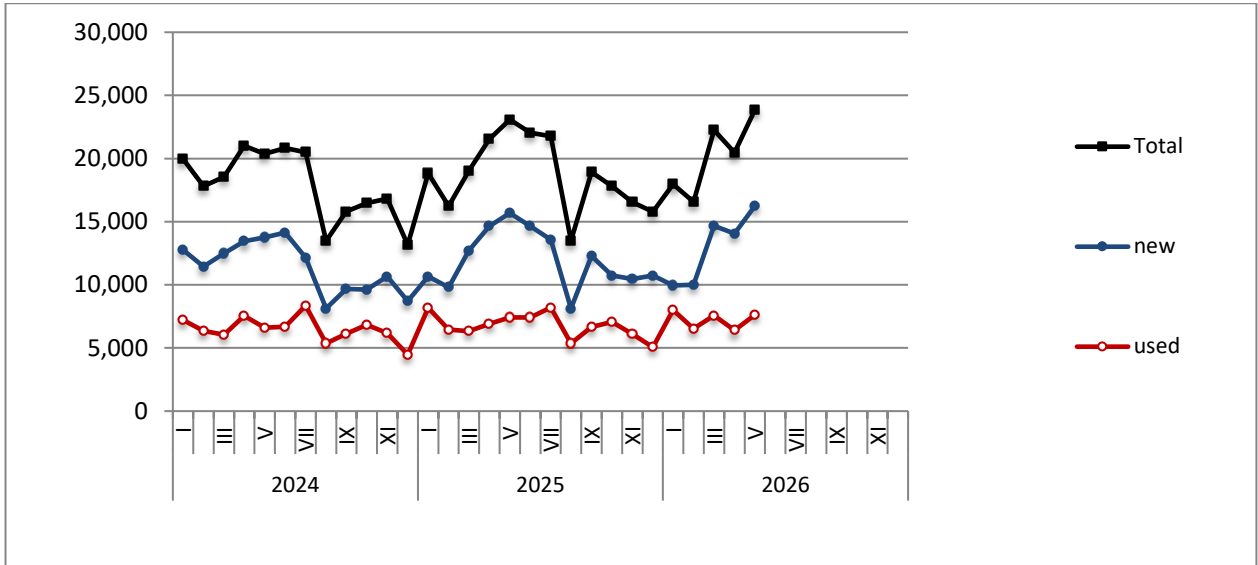
Tel: +30 213 135 2022

[e-mail: data.dissem@statistics.gr](mailto:data.dissem@statistics.gr)

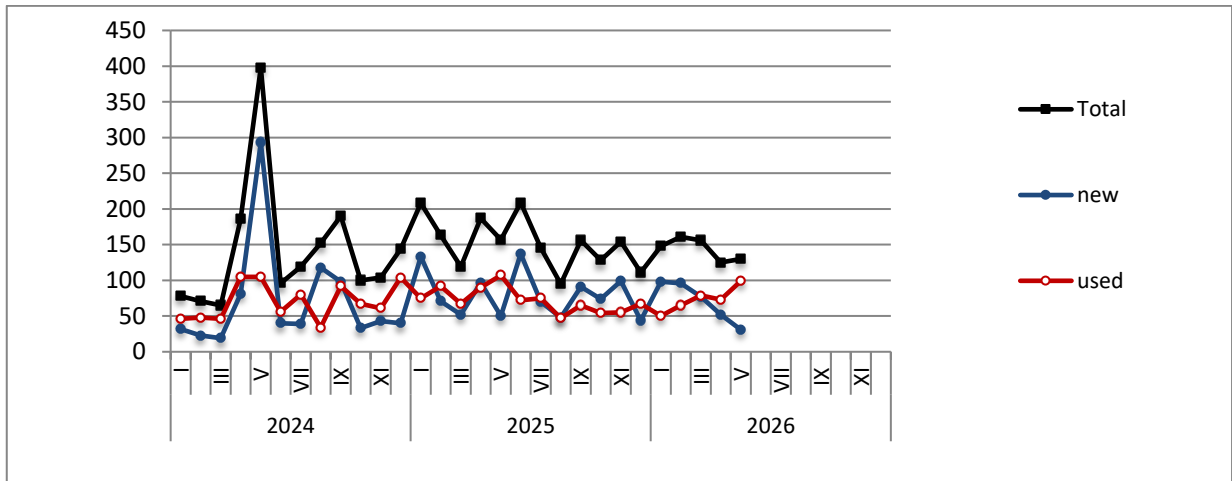
Table 1. Road motor vehicles, both new and used, put into circulation for the first time in Greece: May 2024 - 2026															
Category of Road Motor Vehicles	May									Change (%)					
	2024			2025			2026			2025/2024			2026/2025		
	Total	New	Used	Total	New	Used	Total	New	Used	Total	New	Used	Total	New	Used
<b>Greece, total</b>															
Road Motor Vehicles,total	30,883	22,337	8,546	35,911	26,206	9,705	37,336	27,234	10,102	16.3%	17.3%	13.6%	4.0%	3.9%	4.1%
1. Road motor cars	22,959	14,806	8,153	26,051	16,745	9,306	26,897	17,218	9,679	13.5%	13.1%	14.1%	3.2%	2.8%	4.0%
Passenger Cars	20,363	13,761	6,602	23,088	15,671	7,417	23,851	16,242	7,609	13.4%	13.9%	12.3%	3.3%	3.6%	2.6%
Buses	398	293	105	157	50	107	130	31	99	-60.6%	-82.9%	1.9%	-17.2%	-38.0%	-7.5%
Lorries	2,198	752	1,446	2,806	1,024	1,782	2,916	945	1,971	27.7%	36.2%	23.2%	3.9%	-7.7%	10.6%
2. Motorcycles > 50 cc	7,924	7,531	393	9,860	9,461	399	10,439	10,016	423	24.4%	25.6%	1.5%	5.9%	5.9%	6.0%
<b>Prefecture of Attica</b>															
Road Motor Vehicles,total	16,671	13,723	2,948	19,627	16,116	3,511	20,491	16,865	3,626	17.7%	17.4%	19.1%	4.4%	4.6%	3.3%
1. Road motor cars	13,220	10,349	2,871	15,295	11,886	3,409	15,790	12,257	3,533	15.7%	14.9%	18.7%	3.2%	3.1%	3.6%
Passenger Cars	12,236	9,778	2,458	14,199	11,280	2,919	14,636	11,622	3,014	16.0%	15.4%	18.8%	3.1%	3.0%	3.3%
Buses	218	168	50	68	27	41	55	15	40	-68.8%	-83.9%	-18.0%	-19.1%	-44.4%	-2.4%
Lorries	766	403	363	1,028	579	449	1,099	620	479	34.2%	43.7%	23.7%	6.9%	7.1%	6.7%
2. Motorcycles > 50 cc	3,451	3,374	77	4,332	4,230	102	4,701	4,608	93	25.5%	25.4%	32.5%	8.5%	8.9%	-8.8%

Table 2. Road motor vehicles, both new and used, put into circulation for the first time in Greece: June 2024 - May 2026									
Category of Road Motor Vehicles	Average Jun. 2024 - May 2025			Average Jun. 2025 - May 2026			Change (%)		
	Average Jun. 2025 - May 2026 / Average Jun. 2024 - May 2025								
	Total	New	Used	Total	New	Used	Total	New	Used
<b>Greece, total</b>									
Road Motor Vehicles,total	27,457	18,931	8,526	29,008	20,097	8,911	5.6%	6.2%	4.5%
1. Road motor cars	20,540	12,329	8,211	21,820	13,214	8,606	6.2%	7.2%	4.8%
Passenger Cars	17,986	11,380	6,606	18,957	12,124	6,833	5.4%	6.5%	3.4%
Buses	145	68	77	143	76	67	-1.4%	11.8%	-13.0%
Lorries	2,409	881	1,528	2,720	1,014	1,706	12.9%	15.1%	11.6%
2. Motorcycles > 50 cc	6,917	6,602	315	7,188	6,883	305	3.9%	4.3%	-3.2%

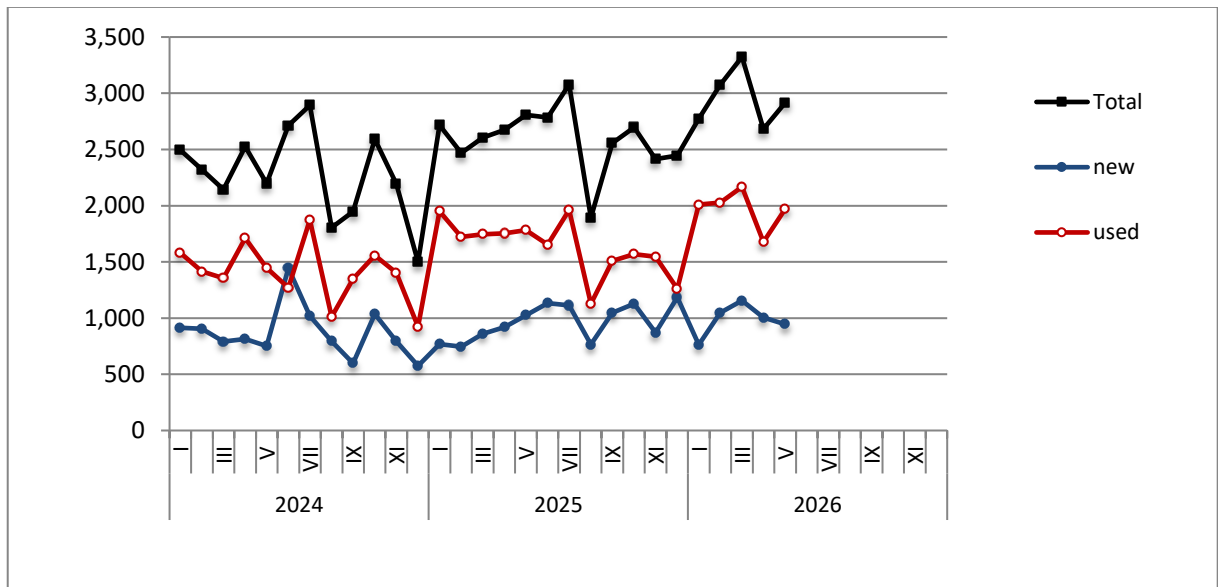
**Graph 1: Passenger Cars (January 2024 – May 2026)**



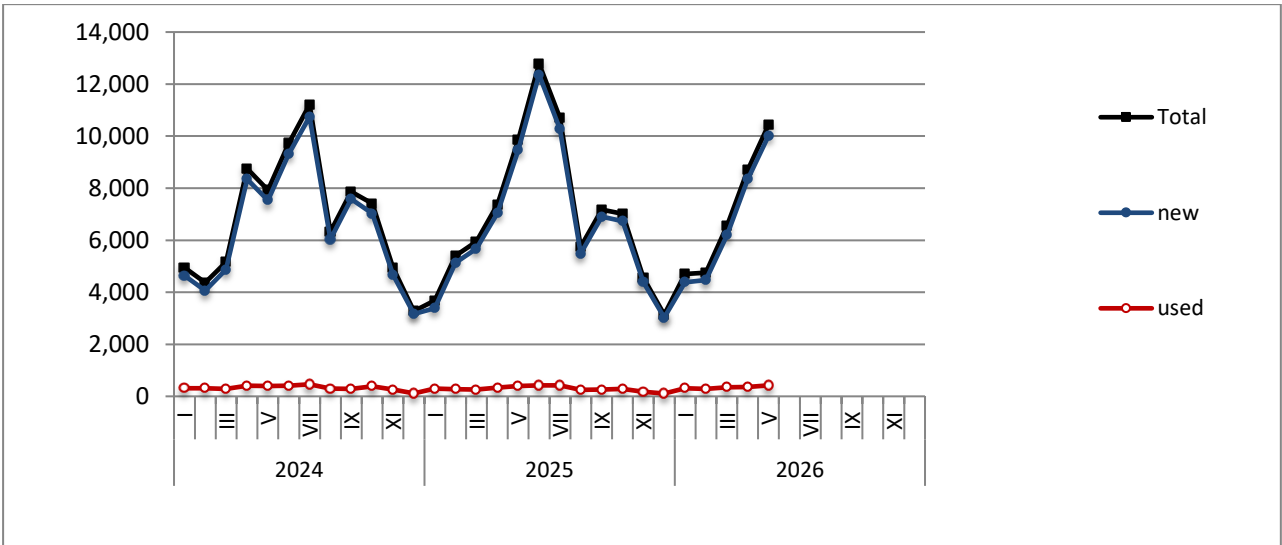
**Graph 2: Buses (January 2024 – May 2026)**



**Graph 3: Lorries (January 2024 – May 2026)**



**Graph 4: Motorcycles (January 2024 – May 2026)**



**Graph 5: New Registrations of Motor Vehicles (May 2026)**

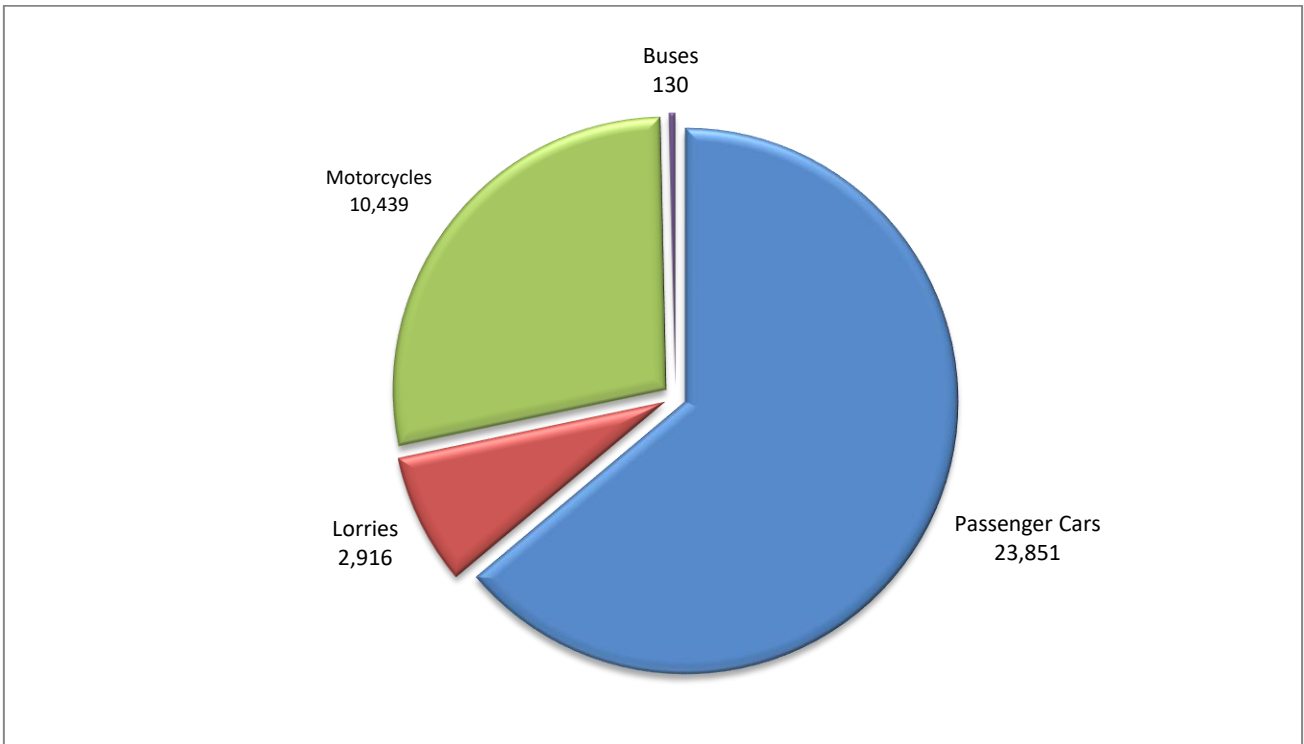
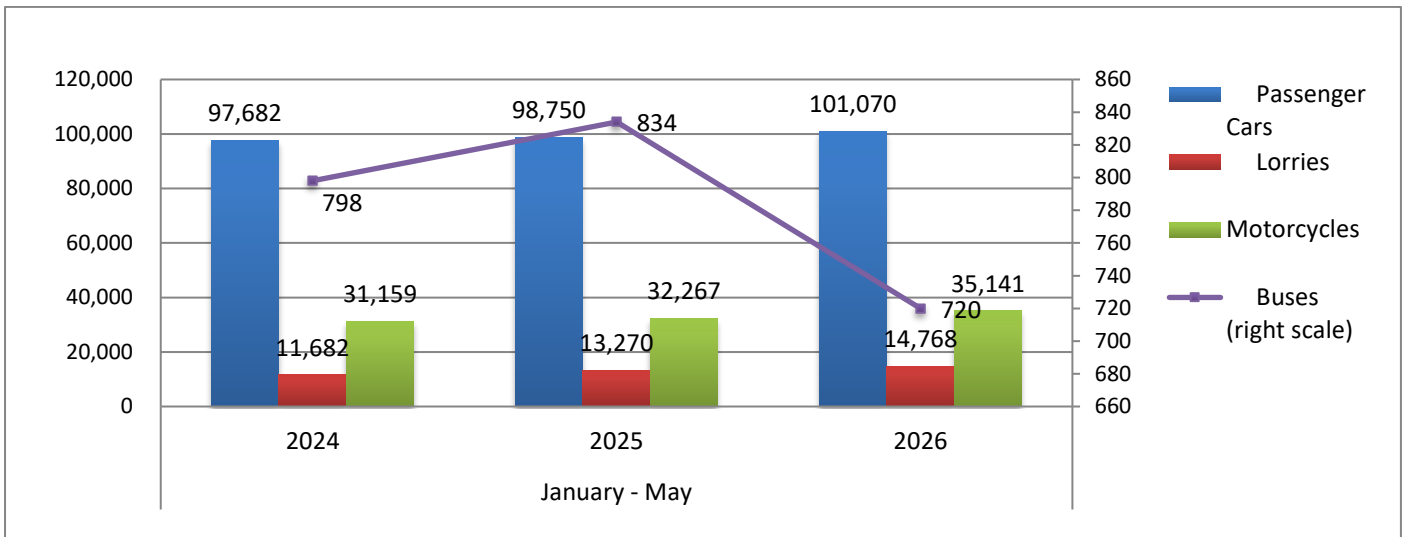
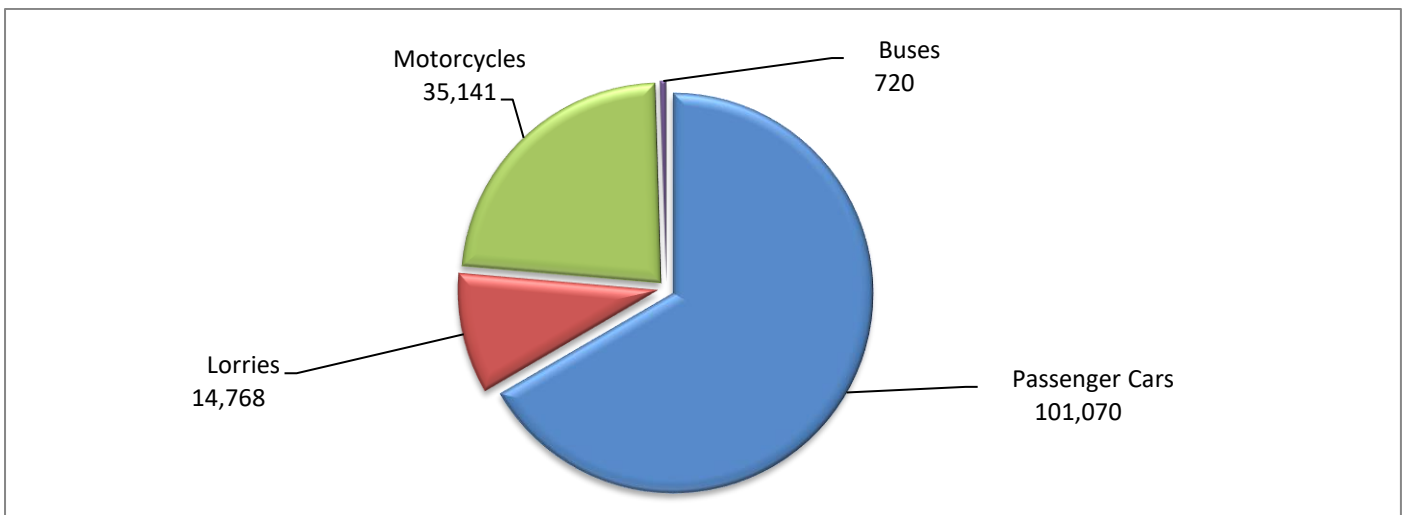


Table 3. Road motor vehicles, both new and used, put into circulation for the first time in Greece: January - May, years 2024 till 2026															
Category of Road Motor Vehicles	January - May									Change (%)					
	2024			2025			2026			2025/2024			2026/2025		
	Total	New	Used	Total	New	Used	Total	New	Used	Total	New	Used	Total	New	Used
<b>Greece, total</b>															
Road Motor Vehicles, total	141,321	97,968	43,353	145,121	98,899	46,222	151,699	103,617	48,082	2.7%	1.0%	6.6%	4.5%	4.8%	4.0%
1. Road motor cars	110,162	68,520	41,642	112,854	68,202	44,652	116,558	70,210	46,348	2.4%	-0.5%	7.2%	3.3%	2.9%	3.8%
Passenger Cars	97,682	63,897	33,785	98,750	63,480	35,270	101,070	64,939	36,131	1.1%	-0.7%	4.4%	2.3%	2.3%	2.4%
Buses	798	448	350	834	403	431	720	354	366	4.5%	-10.0%	23.1%	-13.7%	-12.2%	-15.1%
Lorries	11,682	4,175	7,507	13,270	4,319	8,951	14,768	4,917	9,851	13.6%	3.4%	19.2%	11.3%	13.8%	10.1%
2. Motorcycles > 50 cc	31,159	29,448	1,711	32,267	30,697	1,570	35,141	33,407	1,734	3.6%	4.2%	-8.2%	8.9%	8.8%	10.4%
<b>Prefecture of Attica</b>															
Road Motor Vehicles, total	77,668	61,173	16,495	80,454	63,712	16,742	85,395	67,829	17,566	3.6%	4.2%	1.5%	6.1%	6.5%	4.9%
1. Road motor cars	62,815	46,760	16,055	64,887	48,617	16,270	68,306	51,174	17,132	3.3%	4.0%	1.3%	5.3%	5.3%	5.3%
Passenger Cars	57,997	44,101	13,896	59,451	45,705	13,746	62,208	47,751	14,457	2.5%	3.6%	-1.1%	4.6%	4.5%	5.2%
Buses	458	288	170	459	276	183	379	242	137	0.2%	-4.2%	7.6%	-17.4%	-12.3%	-25.1%
Lorries	4,360	2,371	1,989	4,977	2,636	2,341	5,719	3,181	2,538	14.2%	11.2%	17.7%	14.9%	20.7%	8.4%
2. Motorcycles >50 cc	14,853	14,413	440	15,567	15,095	472	17,089	16,655	434	4.8%	4.7%	7.3%	9.8%	10.3%	-8.1%

**Graph 6. New Motor Vehicles Circulation Licenses: January – May, years 2024 till 2026**



**Graph 7. New Registrations of Motor Vehicles: January – May 2026**



**Table 4**  
**Sales of new and used passenger cars by make: May 2026 and January - May 2026**

Make	Passenger cars			
	May		January - May	
	new	used	new	used
ABARTH	-	-	-	1
ADRIA	-	1	-	3
ALFA ROMEO	71	36	334	159
ALPINA	-	-	1	1
ALPINE	-	-	-	2
ARCA	-	-	1	-
ASTON MARTIN	-	-	-	6
AUDI	315	189	1,792	772
BENTLEY	-	1	3	5
BMW	682	278	2,992	1,238
BURSTNER	-	-	-	7
BYD	202	-	1,166	2
CADILLAC	-	-	-	1
CAPRON	-	4	2	10
CARTHAGO	-	-	-	1
CHAUSSON	-	1	-	2
CHERY	144	-	409	-
CHERY, EBRO	138	-	1,146	-
CHERY, EXEED, FOWNIX, CHIREY, CHERY EXEED, OMODA	8	-	18	-
CHERY, OMODA	18	-	101	-
CHEVROLET	-	5	-	23
CHEVROLET, GMC, HOLDEN, DAEWOO	-	-	-	4
CITROEN	917	445	4,123	1,944
CITROEN / DS	2	192	6	866
CUPRA	123	6	496	35
DACIA	801	166	3,127	822
DAEWOO , GM DAEWOO , CHEVROLET, CHEVROLET DAEWOO	-	-	-	1
DAIHATSU	-	1	-	3
DEEPAL	35	-	87	-
DEEPAL, CHANGAN	12	-	24	-
DETHLEFFS	-	1	-	6
DFSK, SERES, SOKON, FENGON	12	-	41	-
DODGE	-	-	-	1
DONGFENG	6	-	14	-
DS	12	26	65	111
E-GO	-	-	-	1
EXEED, CHERY EXEED, OMODA, EXLANTIX, XTRIM, JAECOO	10	-	113	-
FERRARI	1	3	4	12
FIAT	724	265	1,968	1,223
FORD	228	521	1,087	2,535
FORD 2	-	-	-	1
GAC, AION	24	-	69	-
GEELY	44	-	164	-
GLOBE TRAVELLER	-	-	-	1
HONDA	40	53	165	293

**Table 4 (cont)**  
**Sales of new and used passenger cars by make: May 2026 and January - May 2026**

Make	Passenger cars			
	May		January - May	
	new	used	new	used
HYMER	-	-	1	3
HYUNDAI	1,095	703	3,623	3,187
IMPREZA	-	-	-	1
INEOS	-	-	-	2
IVECO S.P.A / LAIKA CARAVANS	-	-	-	1
JAECOO, OMODA, CHERY, FOWNIX, LUCANO	36	-	139	-
JAGUAR	-	19	1	105
JEEP	203	97	946	408
KERABOSS	1	-	4	-
KIA	893	121	2,531	677
KNAUS	-	2	-	11
LADA	-	-	-	6
LAIKA CARAVANS	-	1	1	3
LAMBORGHINI	-	1	4	6
LANCIA	-	-	-	9
LAND ROVER	47	59	219	368
LEAPMOTOR	34	-	126	-
LEXUS	62	3	261	14
LINCOLN	-	-	-	1
LMC	-	-	-	1
LOTUS	-	1	1	1
LYNK&CO	12	5	45	20
MASERATI	-	5	8	17
MAZDA	107	28	324	165
MC LOUIS SPA	-	-	-	1
MCLAREN	-	-	-	1
MERCEDES	298	649	913	3,353
MERCEDES 1	-	-	2	-
MERCEDES 2	-	-	1	-
MG	6	6	35	13
MG, ROEWE	407	2	1,786	25
MINI	320	48	1,195	227
MITSUBISHI	6	88	24	445
MOBILVETTA DESIGN SpA	-	-	-	3
MOKE	-	-	2	-
NIO	7	-	35	-
NISSAN	213	505	1,936	2,323
NISSAN 1	-	-	4	-
OPEL	667	404	4,137	2,139
PEUGEOT	1,145	906	5,322	4,199
PEUGEOT 2	-	-	5	-
PLA	-	-	-	1
POESSL	-	-	-	1
PORSCHE	23	61	102	305
POSSL	-	-	-	1
PSA AUTOMOBILES	-	1	-	3
RANGE ROVER	-	3	2	24
RENAULT	804	569	2,805	2,667

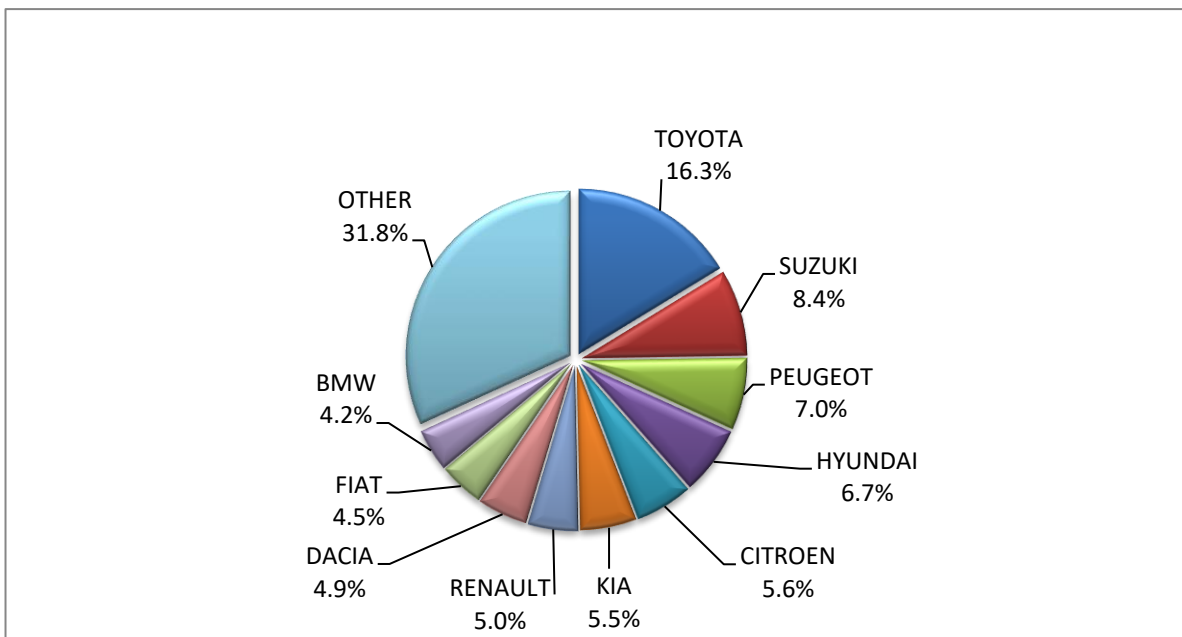
**Table 4 (cont)**  
**Sales of new and used passenger cars by make: May 2026 and January - May 2026**

Make	Passenger cars			
	May		January - May	
	new	used	new	used
ROLLS ROYCE	-	1	-	3
SEAT	268	48	655	244
SKODA	285	91	1,211	415
SMART	15	83	40	440
SRM, SWM, SHINERAY, KMC	-	-	7	-
SSANGYONG	-	-	-	4
SSANGYONG, KG MOBILITY	3	-	69	-
SUBARU	4	6	28	41
SUZUKI	1,372	133	4,158	619
TESLA	22	16	339	68
TOYOTA	2,648	442	9,889	2,090
TRIGANO	-	1	-	4
VOLKSWAGEN	461	277	1,813	1,251
VOLVO	172	30	551	123
VOYAH	-	-	5	-
XPENG	15	-	56	-
YODO, YUN	1	-	1	-
ZEEKR	12	-	29	-
ZEEKR, GEELY	9	-	30	-
<b>TOTAL</b>	<b>16,242</b>	<b>7,609</b>	<b>64,939</b>	<b>36,131</b>

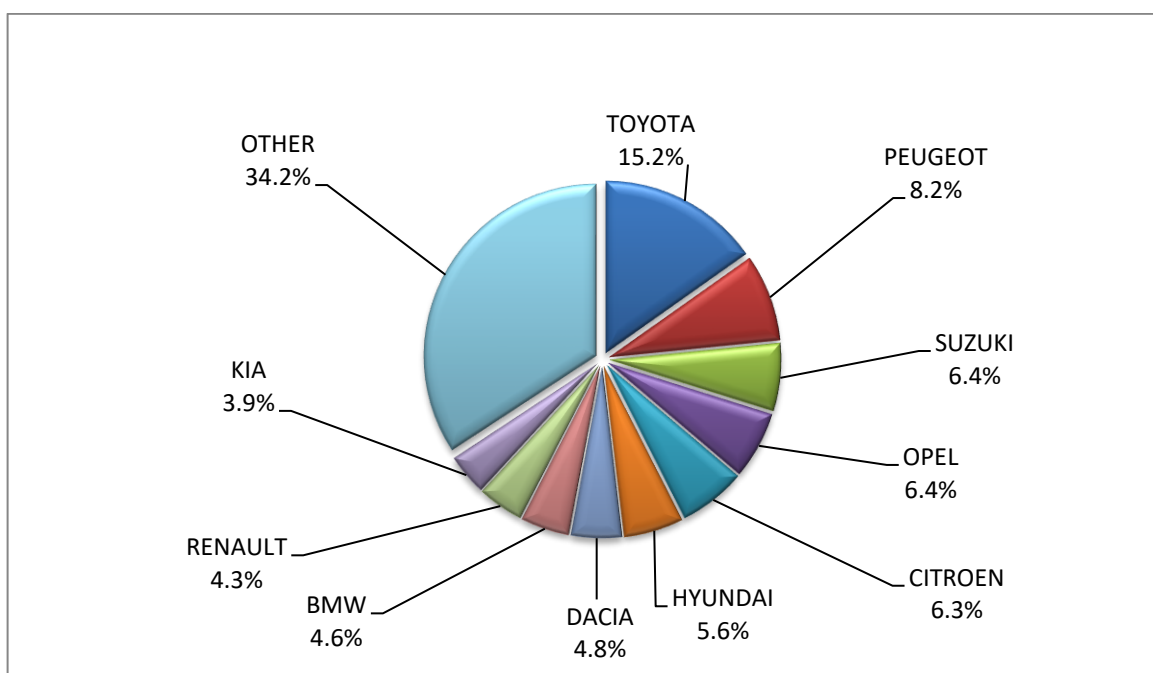
1 : With 2nd/3rd stage manufacturer in Greece.

2 : With 2nd/3rd stage manufacturer abroad.

**Graph 8. Sales of new passenger cars by make (May 2026)**



**Graph 9. Sales of new passenger cars by make (January – May 2026)**



**Table 5  
Sales of new and used lorries by make: May 2026 and January - May 2026**

Make	Lorries			
	May		January - May	
	new	used	new	used
ADDAX MOTORS, ISEKI, STAMA	-	-	2	-
ALKE	3	-	3	-
BMC Otomotiv Sanayi ve Ticaret A.Ş. <sup>1</sup>	-	-	1	-
BYD	-	-	31	3
CHRYSLER	-	-	-	1
CITROEN	37	61	276	326
DACIA	-	10	2	36
DAF	10	65	18	339
DAF <sup>1</sup>	2	1	8	1
DAF <sup>2</sup>	-	-	2	-
DAIHATSU	-	-	-	1
DODGE	-	-	-	5
DR MOTOR	-	-	-	1
ESAGONO ENERGIA	-	-	2	-
EVUM MOTORS	-	-	2	-
FARIZON	-	-	2	-
FARIZON, LEVC	2	-	14	-
FCA US LLC	-	-	-	7

**Table 5 (cont)**  
**Sales of new and used lorries by make: May 2026 and January - May 2026**

Make	Lorries			
	May		January - May	
	new	used	new	used
FEIDI	3	-	8	1
FIAT	97	100	402	579
FIAT-IVECO	-	-	-	8
FORD	207	378	827	1,828
FORD <sup>1</sup>	28	-	84	4
FORD <sup>2</sup>	1	-	8	-
FOTON	9	-	40	-
FUSO	-	-	-	6
GARIA, CLUB CAR, MELEX	2	-	2	-
HUMBAUR GMBH	-	-	-	1
HYUNDAI	-	2	-	7
ISUZU	16	15	189	88
ISUZU <sup>1</sup>	-	-	3	-
IVECO	2	56	7	232
IVECO <sup>1</sup>	2	1	7	2
IVECO <sup>2</sup>	-	-	-	1
IVECO MAGIRUS	-	3	-	6
IVECO MAGIRUS <sup>1</sup>	3	-	3	-
IZUZU	-	-	-	9
JEEP	-	3	-	12
JUNGE FAHRZEUGBAU	-	1	-	1
KERSTNER	-	-	-	1
KIA	2	-	3	3
LAMAR-FCA ITALY FIAT DUCATO	-	-	-	1
LAND ROVER	-	4	2	8
LEVC	-	-	-	1
MAN	-	133	15	661
MAN <sup>1</sup>	3	-	13	-
MAN <sup>2</sup>	-	-	17	-
MAXUS	1	-	3	-
MAXUS, LDV	33	-	96	6
MAZDA	-	-	-	2
MERCEDES	24	469	124	2,303
MERCEDES <sup>1</sup>	17	1	30	9
MERCEDES <sup>2</sup>	-	2	5	3
MINIBUS	-	-	-	-
MITSUBISHI	-	37	-	177
MITSUBISHI <sup>1</sup>	-	1	2	4
MITSUBISHI <sup>2</sup>	-	1	-	1
MITSUBISHI FUSO	-	-	2	17
MITSUBISHI FUSO <sup>1</sup>	3	-	13	1
MITSUBISHI FUSO <sup>2</sup>	-	-	6	2
NISSAN	1	43	14	264

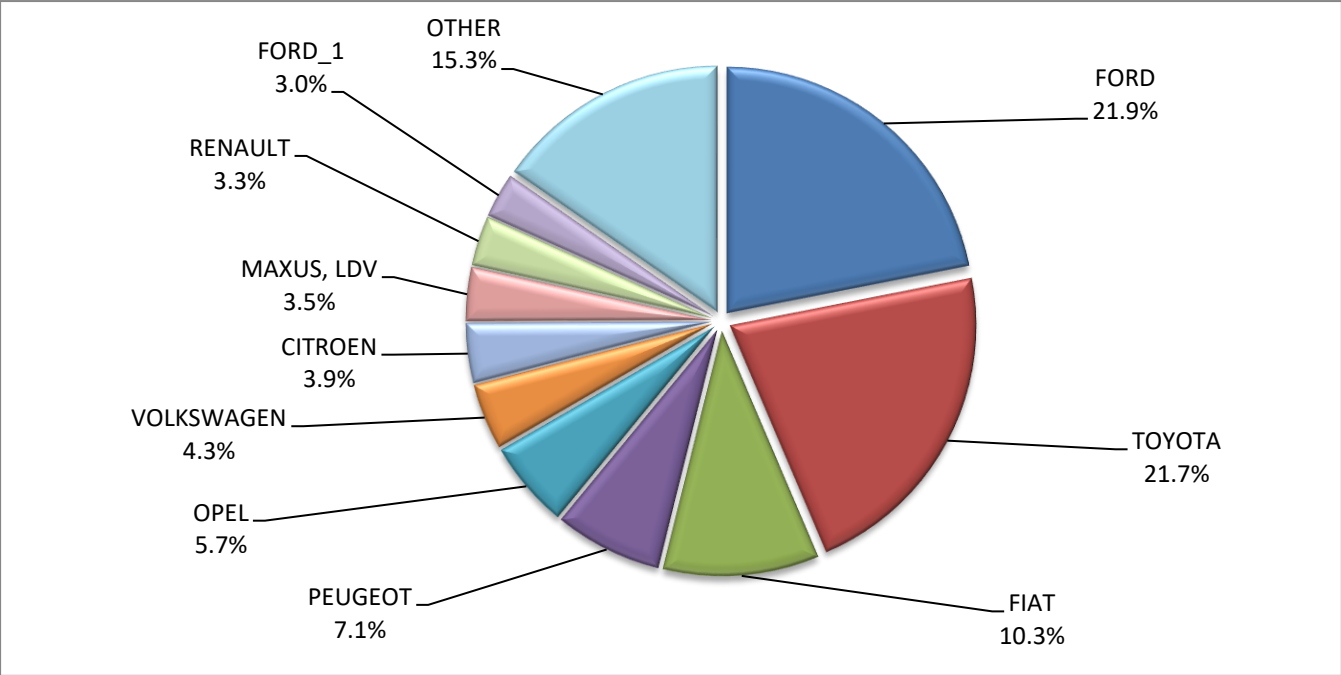
**Table 5 (cont)**  
**Sales of new and used lorries by make: May 2026 and January - May 2026**

Make	Lorries			
	May		January - May	
	new	used	new	used
NISSAN <sup>1</sup>	2	-	2	-
NISSAN <sup>2</sup>	-	1	-	2
OAF	-	-	-	2
OPEL	54	89	188	378
PEUGEOT	67	56	352	340
PFAU	-	-	-	3
PIAGGIO	-	6	-	16
PIAGGIO <sup>1</sup>	1	-	7	-
PIAGGIO <sup>2</sup>	6	-	8	-
RAM	-	-	-	1
RENAULT	31	128	200	627
RENAULT <sup>1</sup>	-	-	1	-
SAXAS	-	-	-	2
SCANIA	4	55	34	312
SEAT	-	1	-	1
SKODA	-	-	-	1
SPIER	-	-	-	1
SSANGYONG, KG MOBILITY	11	-	63	-
STX	-	-	-	1
SUZUKI	-	-	-	1
TOYOTA	205	67	1,457	313
TOYOTA <sup>1</sup>	-	-	12	-
VICTORY	2	-	13	-
VOLKSWAGEN	41	65	236	338
VOLVO	10	116	48	543
VOLVO <sup>1</sup>	3	-	8	-
<b>TOTAL</b>	<b>945</b>	<b>1,971</b>	<b>4,917</b>	<b>9,851</b>

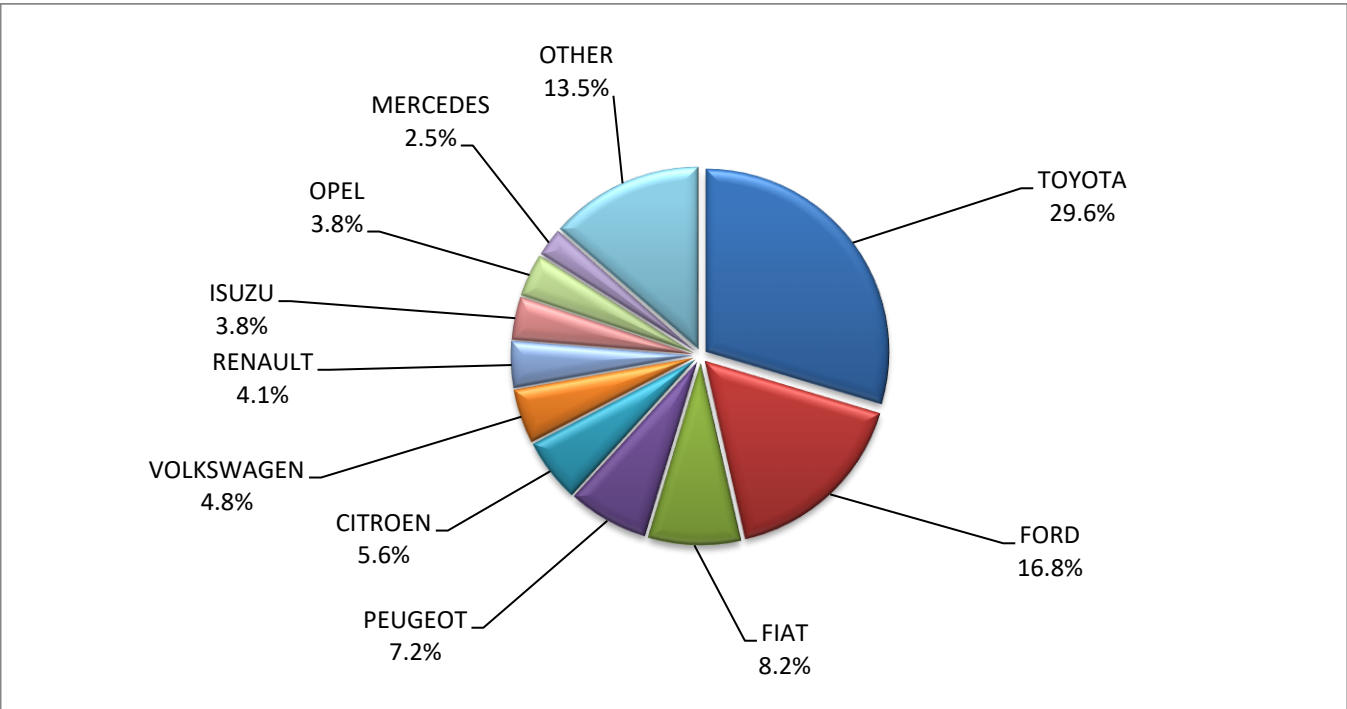
**1 : With 2nd/3rd stage manufacturer in Greece.**

**2 : With 2nd/3rd stage manufacturer abroad.**

**Graph 10. Sales of new lorries by make (May 2026)**



**Graph 11. Sales of new lorries by make (January – May 2026)**



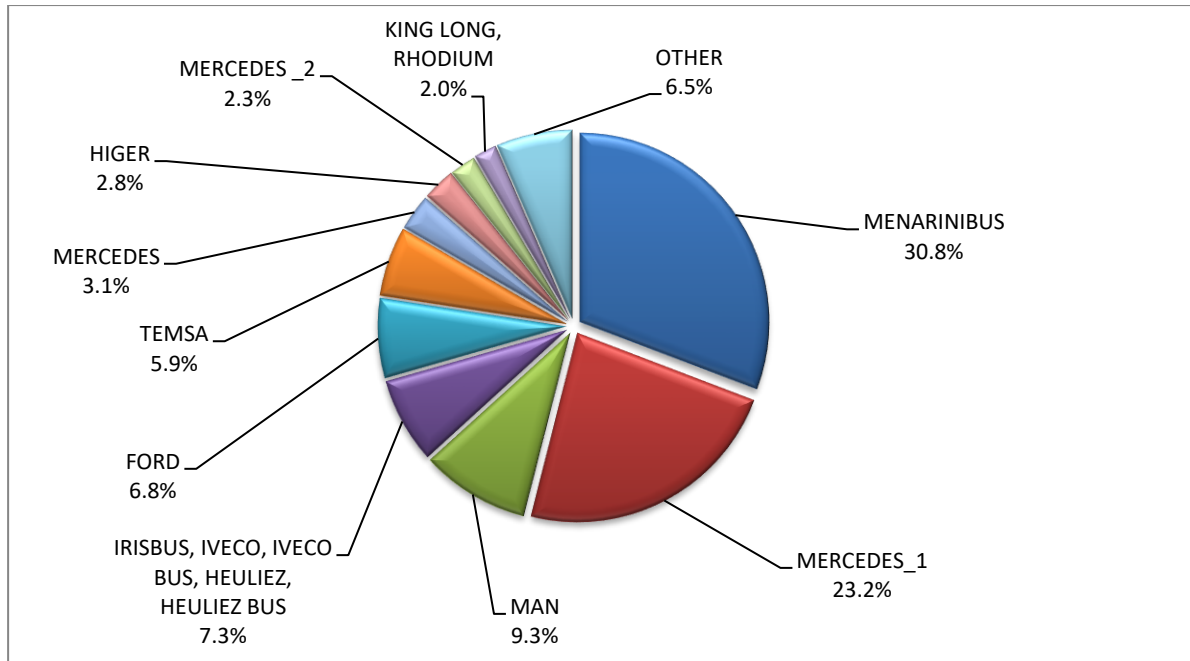
**Table 6**  
**Sales of new and used buses by make: May 2026 and January - May 2026**

Make	Buses			
	May		January - May	
	new	used	new	used
BOVA	-	-	-	17
EVOBUS	-	-	-	1
FORD	2	2	24	12
GRANTON, BAZN, GOLDION	-	-	2	-
HIGER	-	-	10	-
IRISBUS	-	-	-	1
IRISBUS, IVECO, IVECO BUS, HEULIEZ, HEULIEZ BUS	-	-	26	-
ISUZU	-	-	-	4
ISUZU, AOS, GLOBUS, AIOS	-	-	2	-
IVECO	-	-	-	3
IVEKO <sup>2</sup>	-	-	1	-
KARSAN	1	-	6	-
KING LONG, RHODIUM	1	-	7	-
MAN	2	8	33	26
MAN/NEOPLAN	-	3	-	5
MENARINIBUS	-	-	109	-
MERCEDES	1	64	11	207
MERCEDES <sup>1</sup>	19	-	82	-
MERCEDES <sup>2</sup>	-	-	8	2
MERCUS	-	1	-	1
NEOPLAN	-	1	5	9
OTOKAR	-	-	1	3
RAMPINI	-	-	3	-
SCANIA	-	2	-	3
SCANIA <sup>2</sup>	-	-	2	1
SETRA	-	10	1	36
TEMSA	5	4	21	21
VAN HOOL	-	-	-	4
VDL	-	3	-	3
VOLVO	-	-	-	2
XIAMEN KING LONG	-	-	-	4
YUTONG	-	1	-	1
<b>TOTAL</b>	<b>31</b>	<b>99</b>	<b>354</b>	<b>366</b>

**1 : With 2nd/3rd stage manufacturer in Greece.**

**2 : With 2nd/3rd stage manufacturer abroad.**

**Graph 12. Sales of new buses by make (January – May 2026)**



**Table 7**

**Sales of new and used motorcycles by make or manufacturer: May 2026 and January - May 2026**

Make	Motorcycles			
	May		January - May	
	new	used	new	used
APRILIA	85	9	277	18
ARIIC, JINLANG, KEEWAY, ARORA, KL, UM	11	-	32	-
ASUS, Joyrace, Maxon, Gineva Moto, Berini, ROMET MOTORS, ROUTER, ZIPP, TOROS, LuXXon, Motobi, Rivero	25	-	69	-
ASUS, YUKI, RATO, DOCKER, MIGLIORI, VICTORY, AVETA	-	-	2	-
BAJAJ	3	-	9	-
BASHAN, AMGroup, AMGroup Bike, DON, IRBIS, WORKER BEAR, Nomik ATV 2	-	-	4	-
BAW, NIEVE, RELIVE, ALLVIEW, Yunlong Motors	4	-	13	-
BENDA	9	-	21	1
BENELLI	32	1	93	4
BENSEL	-	1	-	2
BETA	10	4	47	11
BIMOTA	-	-	1	-
BMW	148	40	542	239
BOMBARDIER RECREATIONAL PRODUCTS ING (BRP)	-	-	-	5
BONTU, BENTU	3	-	21	-

**Table 7 (cont)**

**Sales of new and used motorcycles by make or manufacturer: May 2026 and January - May 2026**

Make	Motorcycles			
	May		January - May	
	new	used	new	used
BRIXTON	14	-	32	-
BRP	-	2	1	2
BUELL	-	-	-	1
CFMOTO	632	2	1,787	4
CFMOTO, WHITE KNUCKLE, MONDIAL, JUNAK	-	-	-	1
CFMOTO, ZEEHO	10	-	60	-
CIXI KINGRING	-	1	-	1
DAELIM	-	-	-	1
DAYANG, DAYTONA MOTORS, NIPPONIA, DYMOTO, VEEROAD, EVO MOTORS, MH MOTORCYCLES, FKM, FKMOTORS	3	-	9	-
DAYANG, DAYTONA MOTORS, NIPPONIA, KUBA, VEEROAD, SUMCO, CETUR, RUTEC	46	-	159	-
DAYANG, DAYTONA MOTORS, NIPPONIA, VEEROAD, DOCKER, RKS, LUOJIA	19	-	90	-
DAYANG, DAYTONA MOTORS, NIPPONIA, VEEROAD, RUTEC, CETUR, SALCANO, LUOJIA, GA CE LA, HIGHLAND, NORTH	153	-	550	-
DAYANG, DYMOTO, DAYTONA MOTORS, NIPPONIA, MH MOTORCYCLES, ORCAL, SUMCO, KUBA, RKS, RUTEC, AJS	30	-	162	-
DAYTONA MOTORS, EVO MOTORS, LONGJIA, ORCAL, NECO, VGA, ROMET MOTORS, DRAX, MONDIAL, JUNAK, ONLINE	5	-	5	-
DERBI	-	-	-	1
DONGBEN, GANCIN, DIRONG, KRAL	2	-	10	-
DOOHAN, TRINITY, PINK, DOUHA, CECOTEC	7	-	19	-
DUCATI	25	7	72	49
E.F.O, GOLDEN LION, SAKURA, ARTISAN, Fauro,ETALIAN, BOLIDE, LINZE, DREEMS e-mobilities, BAiKU, AJS	-	-	1	-
EAGLE	-	-	-	1
EASYCOOL, HECHHI, HURBA, Mitt, Blu:s, Luxxon, ROMET, VORTEX By Gingabike	-	-	1	-
ECOSHIFT	-	-	205	-
EFUN, ZAP, FRISON, easy-watts	3	-	23	-
EMBUGGY, EVANGEL, The Original BeachBuggy, Beach Buggy	10	-	25	-
ERIDE ELECTROMOBILITY, BEEV, YUNLONG MOTORS, EasyFleet, Pacta Car, DESNER, WANERS, MAXVIEW	-	-	2	-
E-TON	-	1	-	1
FANTIC MOTOR	-	1	2	1
FB,KL,TNT,MALAGUTI,KEEWAY,ZF-KY,TG,TNT MOTOR,F.B Mondial-10 VOLTE CAMPIONE DEL MONDO (figurativo)	1	-	2	-
FD MOTORS, FASPIDER, DAYTONA MOTORS, NIPPONIA, QUANTYA	1	-	1	-
GAS GAS	1	-	5	4
GILERA, PIAGGIO	-	-	-	2
GOCCIA, E-ZI, AGM, SFM, VGA, SACHS, SAXXX, KEEWAY, Vengo, Viarelli, EZI, E ZI	1	-	6	-
GOLDEN LION, SAKURA, ARTISAN, ETALIAN, E-mio, Fauro, Kito, Varaneo, Viverra	1	-	2	-
GOUPIL, MEGA, POLARIS, GEM	-	-	6	-
GPX	1	-	3	-
Haojiang, ZONTES, TAYO, Sharpon, IFINO, KIDEN, ZHONGYU, CUBTOM, DIYUN, NAMIN, TIM DERVI, VUKA, THUMP, R-ipper	1	-	1	-
HAOJIN, KUBA, RKS, SKYJET, LETBE, AJS	27	-	64	-
HARLEY DAVIDSON	11	20	30	104
HONDA	1,594	80	5,899	299
HORWIN	2	-	4	-
HSUN, HISUN, APACHI, Mx, MASAI, HYTRACK, TRAPPER, PUMAREX, ASYAMOTOR, DAYTONA	1	-	1	-

**Table 7 (cont)**

**Sales of new and used motorcycles by make or manufacturer: May 2026 and January - May 2026**

Make	Motorcycles			
	May		January - May	
	new	used	new	used
MOTORS, GEON, KRAL				
HUSQVARNA	9	4	30	33
HYOSUNG	-	-	1	-
INDIAN MOTORCYCLE	1	2	14	2
ITALJET	2	-	8	-
JAWA	3	-	6	-
JHEJIANG FUXIN	-	-	-	1
JIAJUE, JINDING, LANYING, DHS, MIROMOTO, ALPHAMOTO, SPRINT, QLINK, MAXON, RICH MOTORS, EUROCKA(CKA), PEDA	14	-	14	-
JIAJUE, Joyrace, MAXON, Gineva Moto, ASUS, TURBHO, BTC, AGM, ROMET MOTORS, ROUTER, ZIPP, TOROS	37	-	163	-
JIAYUAN	1	-	1	-
JINLING	-	1	-	1
JNEN, JUNENG, ZIPP, MOTORAN, HORS, FLEX TECH, ALPHA-MOBIL, ROUTER, PEDA MOTOR, PEDA, APACHI, ARORA	17	-	64	-
JNEN, JUNENG, ZIPP, MOTORAN, HORS, FLEX TECH, RAZZO, TOROS, ONE, JUNAK	4	-	10	-
JNEN, JUNENG, ZIPP, MOTORAN, ONE, RAZZO, FLEX TECH, TOROS, JUNAK, TURBHO, PEZAL, ALPHA-MOBIL	11	-	52	-
JNEN, JUNENG, ZIPP, MOTORAN, PUZEY, ALPHA-MOBIL, HORS, ROMET, JST, JMT, PEDA MOTOR, PEDA, APACHI	14	-	42	-
JONWAY, JMSTAR, SHENKE, HUIBANG	-	-	1	-
KAINING	1	-	1	-
KAMAX	-	-	2	-
KAWASAKI	51	12	144	39
KEEWAY	22	-	78	-
KEEWAY, JINLANG, ARIIC, ARORA, KL	1	-	6	-
KEEWAY, LONGJIA	2	-	4	-
KEEWAY, ORCAL, NECO, ALFASCOOTERS	4	-	24	-
KEEWAY, RKS, KUBA, SKYJET, STELS, MORBIDELLI	44	-	131	-
KTM	45	36	219	159
KWANG YANG	-	1	-	1
KYMCO	146	35	435	126
LAMBRETTA	-	1	-	1
LEIMO, ZF-KY, HUAWIN, ARORA, MOJITO	2	-	3	-
LETBE, HAOJIN, KUBA, RKS, SKYJET, RKS LETBE	92	-	256	-
LEXMOTO, ROMET, NECO, LUXXON, PRIKE, MAXON	103	-	313	-
LIFAN, QIPAI, SKYGO, TAKTAS, TAKTAS MOTOR	6	-	33	-
Lingzhida, LINZDA, LINDN, LINYI, LONGMAO, NLIGHT	1	-	1	-
LIVEWIRE	-	-	1	-
LOJO, RAINWOLL	3	-	5	-
LONCIN, KINLON, LONGTING, KUBA, YUKI, MONDIAL, STMAX, KANUNI, MOTORAN, ASYA, QUSWA, PUMAREX, RALLY USA, MOD, CCM	110	-	148	-
LONCIN, KUBA, RKS, ITALIKA, SUNRACE, SKY, MALAGUTI, SUPERBIKE, ROCKET, NOVELBAT, TIGERMOTO, GREEN	4	-	13	2
LONCIN, VOGÉ	114	-	193	-
LONCIN, VOGÉ, VOGÉPRO	134	1	635	1
LONGJIA, ORCAL, NECO, VGA, ROMET MOTORS, DRAX, MONDIAL, JUNAK, ONLINE, MOTOWELL, JORDON, GABELLI	9	-	105	-
LONGJIA, VICTORIA, VICTORIA MOTORRAD, ORCAL, NECO, VGA, AGM, LAZIO, TNT MOTOR, MONDIAL	9	-	36	-
LONGJIA, VICTORIA, VICTORIA MOTORRAD, ORCAL, NECO, VGA, BTC, ALFASCOOTERS	54	-	346	-

**Table 7 (cont)**

**Sales of new and used motorcycles by make or manufacturer: May 2026 and January - May 2026**

Make	Motorcycles			
	May		January - May	
	new	used	new	used
LONGJIA, Zündapp, VGA, NECO, BTC, AGM, ALFASCOOTERS, ROMET MOTORS, Kudaki, BARTON MOTORS, OVER BIKES	3	-	13	-
LVNENG	4	-	8	-
MACBOR, COLOVE, online, KOVE, DAYTONA MOTORS, ZF-KY	16	-	145	-
MALAGUTI	65	-	199	-
MARSHHELL	1	-	2	-
MBK	-	-	-	1
MBP, MORBIDELLI, KEEWAY, KUBA, RKS, STELS	8	-	30	-
MELEX	1	-	1	-
MGK HM	90	2	291	2
MICRO	1	-	2	1
MODENAS	-	1	-	2
MONDIAL, UGUR, YIBEN, DERRACE, ISILDAR, TGB, APACHI, ISILDAR APACHI	1	-	1	1
MORBIDELLI, KEEWAY, MBP, STELS, RKS	41	-	142	-
MOTO GUZZI	18	-	65	2
MOTO MORINI	10	-	30	1
MOTRON MOTORRAD, ZONGSHEN	-	-	1	-
MURTAS, VELIMOTOR, RONGJUE, PINK, BR SPORT, INVICTA ELECTRIC	-	-	1	-
MV AGUSTA	1	2	2	5
NERVA	-	-	2	-
ODES	-	-	2	-
PEUGEOT	26	-	100	3
PHELON & MOORE	2	-	2	-
PIAGGIO	1,063	32	3,451	128
PILOTCAR	2	-	5	-
POLARIS	11	1	18	2
POWERLAND	2	-	2	-
QJ, QJIANG, KEEWAY, LEONE, tell, KUBA, RKS, BENELLI, VENGO	30	1	30	1
QJ, QJIANG, QJMOTOR, B MOTOBİ, QJTEC, LIFAN, GTS, DAYTONA MOTORS, SIMONINI MOTO, PINK, RKS	7	-	51	-
QJ, QJMOTOR, B MOTOBİ, QJTEC, RKS	213	-	910	1
QJ, QJMOTOR, B MOTOBİ, QJTEC, RKS, KUBA, SKYJET	19	-	113	-
RATO,ALTAI,MIGLIORI,DOCKER,ASUS, AVETA, BRIXTON MOTORCYCLES, KUBA, RKS, GENERIC, LAMBDA MOTORCYCLES,	102	-	436	-
REDMOTO	-	-	3	1
REGIS MOTORS	-	-	4	-
RENAULT	-	1	-	1
RENLI, ORION	3	-	17	-
REWACO	-	1	-	1
RIDE	-	-	-	1
RIEJU	7	-	43	-
RIYA, RYMOTO, KUBA, Lexmoto, MITT, ALPHA MOTORS, IMF, ROMET, ZIPP, ARORA, ZORRO, MOJITO, MASH	3	-	24	-
ROYAL ENFIELD	56	-	258	3
Royalloy, Royal Alloy, RA	11	-	14	-
RVM, MACBOR, COLOVE, ORCAL, DAYTONA MOTORS	7	-	7	-
SACIN, SKYTEAM, SNAKEMOTORS, CONAN, KEEWAY, MONKEY BIKES, TRITON, ROMET, ZIPP, SUMCO, BLUROC MOTORCYCLES	2	-	11	-
SAIGE, STMAX, YUKI, KRAL, JPN, Mytos Motorcycles, VIKEBIKE	1	-	2	-
SAKURA, GOLDEN LION, ARTISAN, Fauro, ETALIAN,Viverra, Varaneo, Kito, E-mio, velca, E.F.O, E-KUMA	3	-	11	-

**Table 7 (cont)**

**Sales of new and used motorcycles by make or manufacturer: May 2026 and January - May 2026**

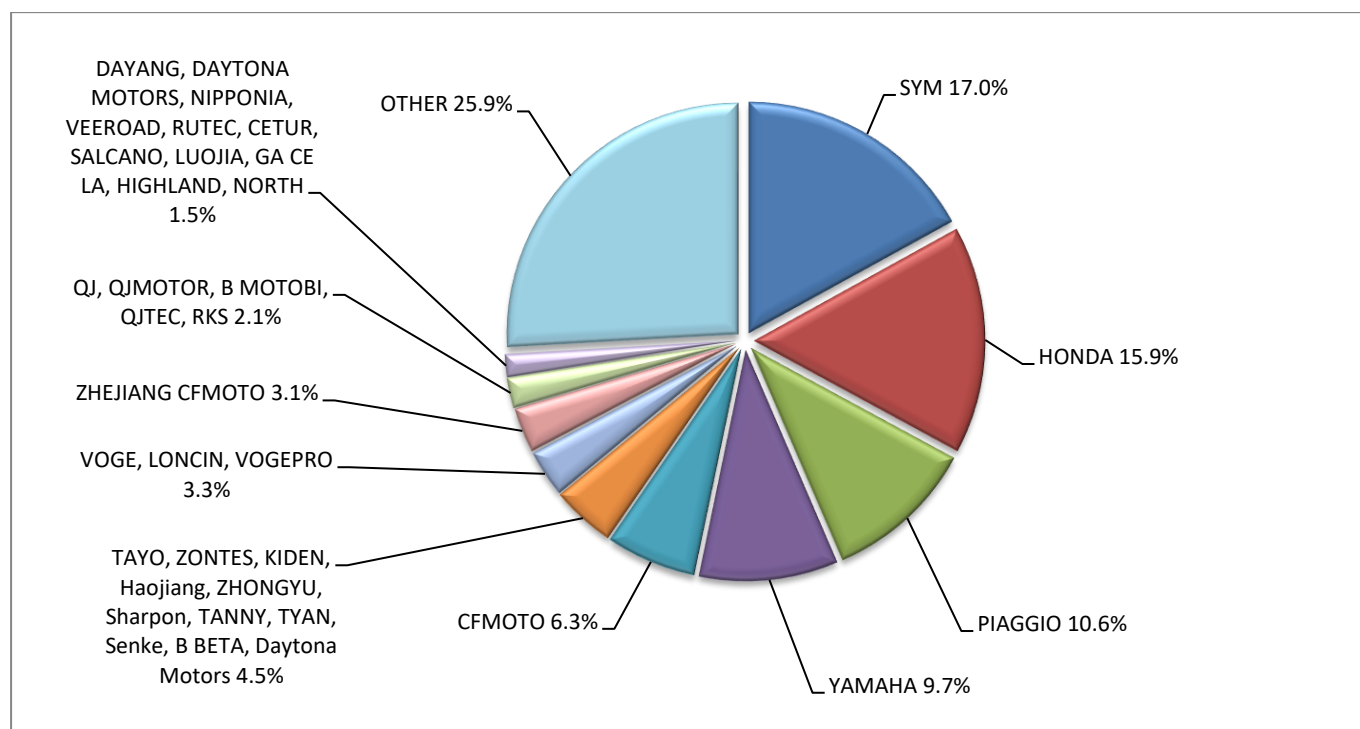
Make	Motorcycles			
	May		January - May	
	new	used	new	used
SAM	-	-	-	1
SAN YANG	-	1	-	2
SCUTUM, ETRIX, SILENCE	1	-	2	-
SEGWAY	29	-	40	-
SHERCO	1	1	14	7
SHINERAY, SWM	-	-	8	-
SILENCE, SCUTUM, ETRIX	2	-	8	1
SKYTEAM, SACIN, CSR, METALCO, SOKUDO, BAZUKA, MINICO, MOTOSBASI, MOTOS BORDOY, SUMKO, ROXON, MONKEY BIKES	3	-	10	-
STARK	4	-	11	-
SUZUKI	92	16	361	68
SWM	1	-	1	-
SYM	1,701	11	5,416	41
TALARIA	-	-	2	-
TARO, TRMOTOR, CHUANL, JUNAK, BARTON MOTORS, ORCAL, Lexmoto, MITT, NECO, WOTTAN, MAXON, MAX-ON, MOTOBI	-	-	2	-
TAYO, HAOJIANG, ZHONGYU, THUMP, THUMPSTAR, KIDEN, ZONTES, Junak, SENKE	3	-	11	-
TAYO, HAOJIANG, ZHONGYU, THUMP, THUMPSTAR, KIDEN, ZONTES, Junak, SFNKF, TANNY, TYAN, ROMET	3	-	42	-
TAYO, ZONTES, KIDEN, Haojiang, ZHONGYU, Sharpon, TANNY, TYAN, Senke, B BETA, Daytona Motors	446	-	1,465	-
TAYO, ZONTES, KIDEN, Haojiang, ZHONGYU, Sharpon, TANNY, TYAN, Senke, B BETA, Daytona Motors, MONDIAL, RKS	19	-	115	-
TC-101, eBUDDY, Rino, CityArgo, RW E-TRUCK, Liddel, Butch-E, maxi van, maxi pickup, Reach, Rino, Elveon, eONE	2	-	5	-
TEYIN, TIANYING, MITT, SUMCO, RIYA, HUVE, SANBEN, TYM, APACHI, ISILAR APACHI	1	-	12	-
TEYIN, TIANYING, XINBEN, SANBEN, ALFASCOOTERS, Alpha Motors, APACHI, ARORA	4	-	15	-
TIANYING, RIYA, HONGYUNDA, TYM, HONLING, TAMCO, ALISON, DMK MOTORS, WLIE, LEEWAY, WLXQ, APGmoto	1	-	9	-
TIANYING, RIYA, SANBEN, TEYIN, TYM, Alfascoters, JORDON, YUKI, YAMASAKI	1	-	3	-
TIANYING, RIYA, HONGYUNDA, TYM, HONLING, SANBEN, XINBEN, TAMCO, ALISON, DMK MOTORS	-	-	2	-
TM MOTO	-	-	1	-
TRIUMPH	63	1	210	13
TRIUNI, TRIGOBIKE, LUCKING-MOPED, CSE-EV, JSE-MOTO, RETELLI, BIKEMITE, MOBI-E, U-MOB, VELCAMOTOR, DUKKA, LUYING	2	-	4	-
TUK TUK FACTORY	-	-	-	1
TVS	5	-	5	-
UM	25	-	57	-
VELIMOTOR, VOLTAMP, ALTUX, KKL HITECH, WHEELN WATER TECH, ALTUS, NUVEAU MONDE, EN MOTO, YUBEE MOTORS, KKL	1	-	2	-
VELOCIFERO	5	-	8	-
VMOTO, E-MAX, FMC, CSR, ROADSIGN, KENTOYA, JINYING, GOES, VETRIX, DAO, VENGO, TELL	-	-	1	2
VMOTO-SOCO, E-MAX, VMOTO, SUPER SOCO	6	-	21	-
VOGE, LONCIN, VOGEPRO	330	-	1,054	-
WANGYE, SANBEN, UM, KENOS, SUPERBYKE, MDC, MISTRAL	3	-	8	-
WONJAN, THRUST MOTOR, WMOTO, KEEWAY, TD	2	-	9	-
WUZHENG	-	-	2	-
WXEVERBRIGHT, EVERBRIGHT, VITALE	-	-	5	-
XEV, X, XEV YOYO	6	-	19	-

**Table 7 (cont)**

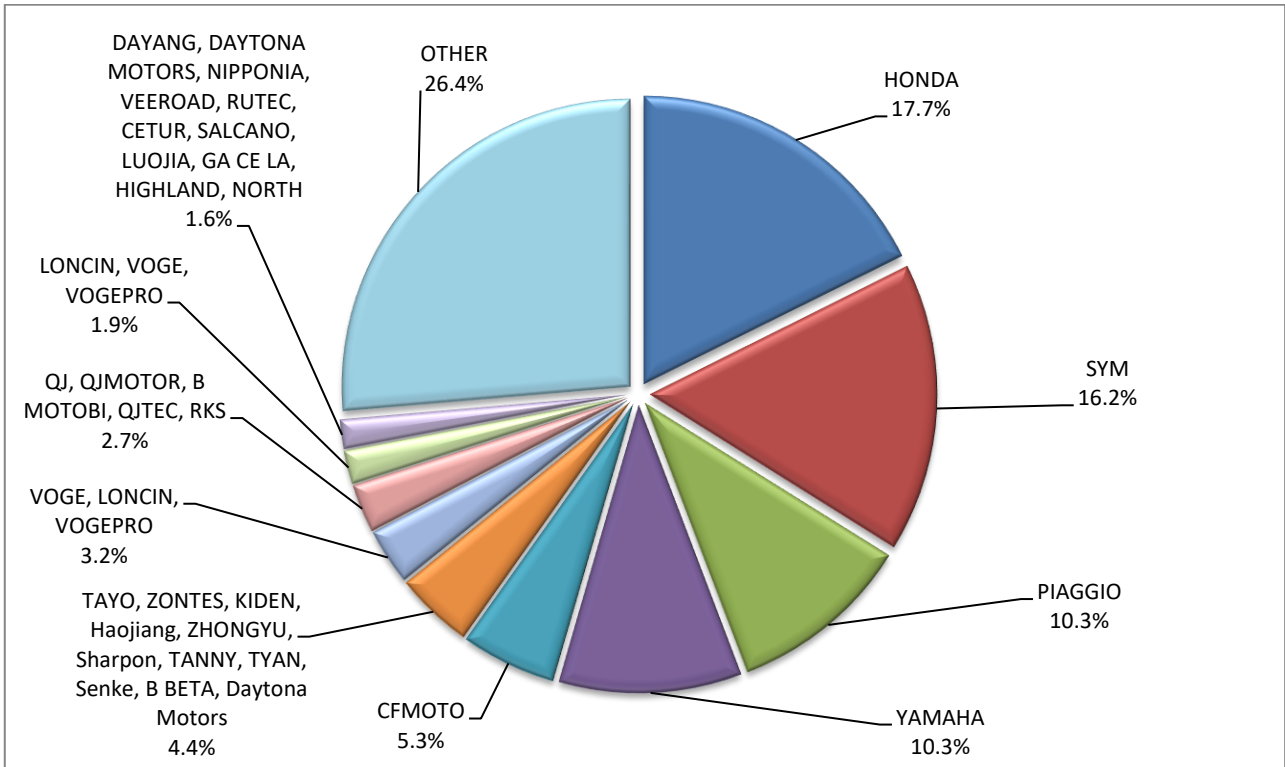
**Sales of new and used motorcycles by make or manufacturer: May 2026 and January - May 2026**

Make	Motorcycles			
	May		January - May	
	new	used	new	used
XIAMEN XIASHING	91	-	169	-
XINRI, SUNRA ,APACHI, ISILDAR, ISILDAR APACHI, Wayscral, KRAL	3	-	8	-
YADEA	1	-	2	-
YAMAHA	976	80	3,436	303
YAMAHA, MBK	-	8	-	17
YUNLONG MOTORS, Pacta Car, DESNER, WANERS, MAXVIEW, Hudson, HudsonEV, MODENA	3	-	6	-
ZERO MOTORCYCLES	2	1	6	1
ZHEJIANG CFMOTO	315	-	370	-
ZHEJIANG GEELY	2	-	2	-
ZHEJIANG JONWAY	-	-	1	-
ZHEJIANG RENLI	2	-	2	-
ZHIDOU , ZD, RKS	-	-	11	-
ZHONGNENG, ZNEN, AGM, AJS, YUKI, COLIBRI, EUROCKA, BTC, NOVA MOTORS, LEXMOTO	1	-	1	-
ZHONGNENG, ZNEN, AGM, BTC, CLS, COLIBRI, DAYTONA MOTORS, DERRACE, DOCKER, JM MOTORS, KUBA, La souris, LEXMOTO	24	-	68	-
ZNEN	-	1	-	2
ZONGSHEN, ZONGSHENCYCLONE, ZONSEN, Lexmoto, MONDIAL, SINNIS, SPARKSTER, MACBOR, VORTEX	-	-	2	-
ZXMCO, NIJ, DAYTONA MOTORS, PINK	3	-	6	-
<b>TOTAL</b>	<b>10,016</b>	<b>423</b>	<b>33,407</b>	<b>1,734</b>

**Graph 13. Sales of new motorcycles (May 2026)**



**Graph 14. Sales of new motorcycles (January – May 2026)**



## EXPLANATORY NOTES

<b>Survey on the issuing of new road motor vehicle circulation licenses</b>	The survey on the issuing of new motor vehicle circulation licenses is a census survey. The released data give information, at country level, on the brand and type of the motor vehicle, as well as whether it is new or used. The survey does not include vehicles that move on rails, trolley busses, agricultural tractors and machinery. In addition, the following are excluded: all motor vehicles of the Armed Forces, Police, Fire Brigade, State Services, Diplomatic Corps, Foreign Missions, and Invalids of Wars, as well as motorcycles with a cylinder capacity less than 50 cc.
<b>Legal basis</b>	Law 3832/2010
<b>Reference Period</b>	May 2026
<b>Coverage</b>	The production of monthly data is based on the registers held by the Ministry of Infrastructure and Transport, which records all the monthly changes observed in the vehicle registration licenses at country level.
<b>Definitions</b>	<p><b>Road motor vehicle</b> is any vehicle that, irrespective of the number of wheels, is moved by an engine and is designed to transport persons or cargo or both of them, either they are on the same single vehicle or on a trailer carried by the main motor vehicle.</p> <p><b>New</b> road motor vehicle is any motor vehicle that is registered for the first time in Greece during the reference month and has not been put into circulation in any other country.</p> <p><b>Used</b> motor vehicle is any motor vehicle that is registered for the first time in Greece and has been imported as a used one from abroad</p> <p><b>Passenger motor vehicle:</b> it is a motor vehicle designed to carry mostly people, having no more than 9 seats, including the driver's seat.</p> <p><b>Bus:</b> it is a motor vehicle, which is designed to carry mostly people, having more than 10 seats, including the driver's seat. In the corresponding tables of this announcement, this category also includes articulated buses.</p> <p><b>Lorry:</b> it is motor vehicle designed to carry mostly cargo. In the corresponding tables of this announcement, this category also includes tractors, tow trucks, articulated tractors, and trucks with trailers.</p> <p><b>Motorcycle:</b> any two-wheeled motor vehicle, with or without sidecar, with maximum authorized design speed over 45 km/h, or in case it is powered by a combustion engine, with a cylinder capacity of 50 cc or over. In the corresponding tables of this announcement, this category also includes the three-wheeled motor vehicles – motor tricycles.</p> <p><b>Tricycle motor vehicle:</b> it is a motor vehicle with three symmetrical wheels with maximum authorized design speed over 45 km/h, or in case it is powered by a combustion engine, with a cylinder capacity over the 50 cc. This category also includes four-wheel vehicles, except the light four-wheel motorcycles, whose empty vehicle tare (excluding the weight of the fuel or mixture of fuel-oil or the weight of the batteries for electric cars) is up to 400 kg in the case the vehicle is designed for passenger use or up to 550 kg in case the vehicle is designed to carry cargo and whose engine is up to 15KW.</p>
<b>Methodology</b>	Exhaustive Survey. The primary data derive from the Ministry of Infrastructure and Transport and are based on the issuing of new circulation licenses as they are registered by the Regional Offices for Ministry of Infrastructure and Transport.
<b>References</b>	More information (graphs, tables) concerning the survey on the issuing of new motor vehicle circulation licenses are available on the webpage of ELSTAT, <a href="http://www.statistics.gr">www.statistics.gr</a> , under the link <a href="http://www.statistics.gr/en/statistics/-/publication/SME24/">http://www.statistics.gr/en/statistics/-/publication/SME24/</a>