



HELLENIC REPUBLIC
HELLENIC STATISTICAL AUTHORITY

Piraeus, 28 February 2020

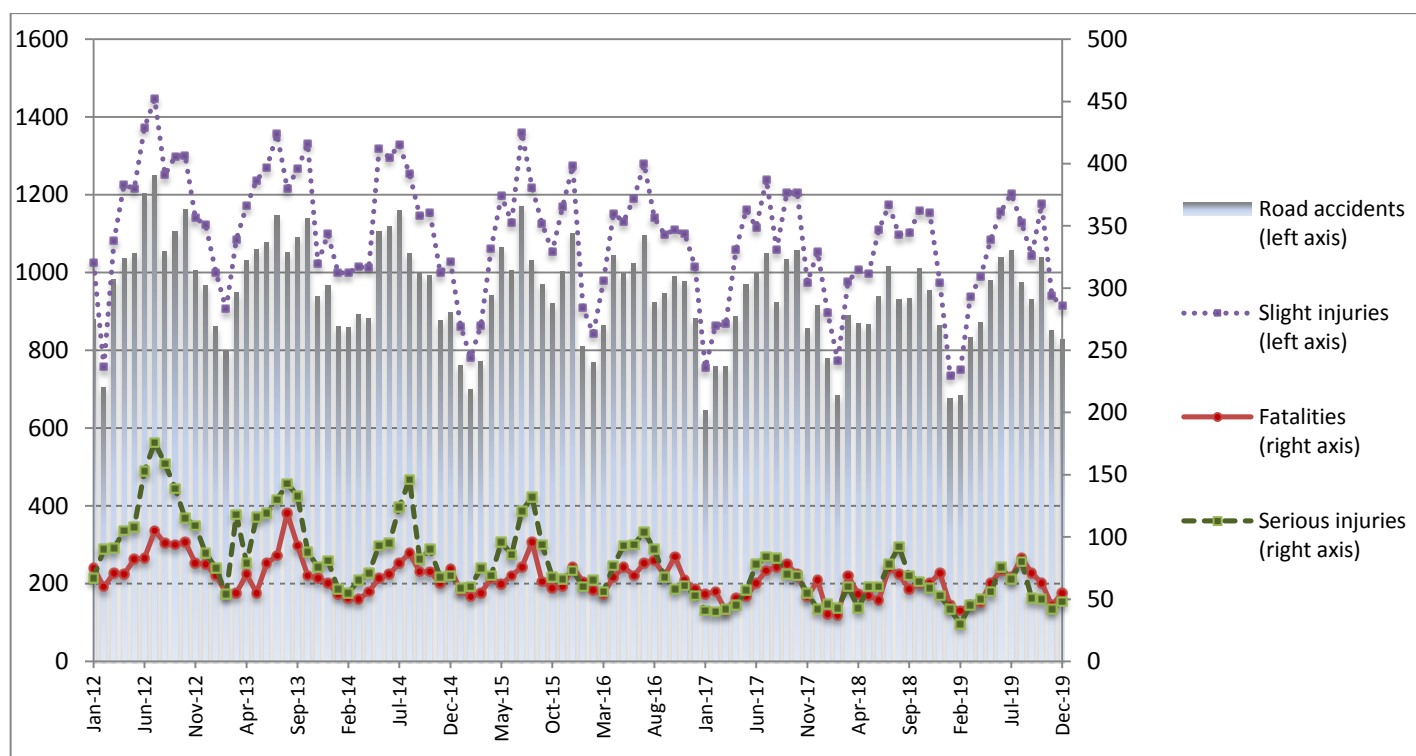
PRESS RELEASE

ROAD TRAFFIC ACCIDENTS: December 2019

The Hellenic Statistical Authority (ELSTAT) announces provisional¹ data on Road Traffic Accidents for December 2019. In particular, the road traffic accidents which occurred in Greece, resulting in death or injury, decreased by 4.3% in comparison with the corresponding month of 2018 (828 road accidents in December 2019, against 865 road accidents in December 2018).

The casualties of the injury-causing accidents that occurred in December 2019 were as follows: 55 deaths, 48 serious injuries and 914 slight injuries. In contrast, in December 2018 the corresponding figures were: 71 deaths, 53 serious injuries and 975 slight injuries. Therefore, road accident casualties in December 2019 decreased by 22.5% for deaths, by 9.4% for serious injuries and by 6.3% for slight injuries.

**Graph 1: Road traffic accidents and casualties,
January 2012 - December 2019**



Provisional data for the period January 2019 - December 2019

Information on methodological issues:

Sectoral Statistics Division
Transport Statistics Section
P. Tzortzi
Tel: +30 213 135 2187
Fax : +30 213 135 2757
e-mail: p.tzortzi@statistics.gr

Information for data provision:

Tel: 213 135 2022, 2308, 2310
e-mail: data.dissem@statistics.gr

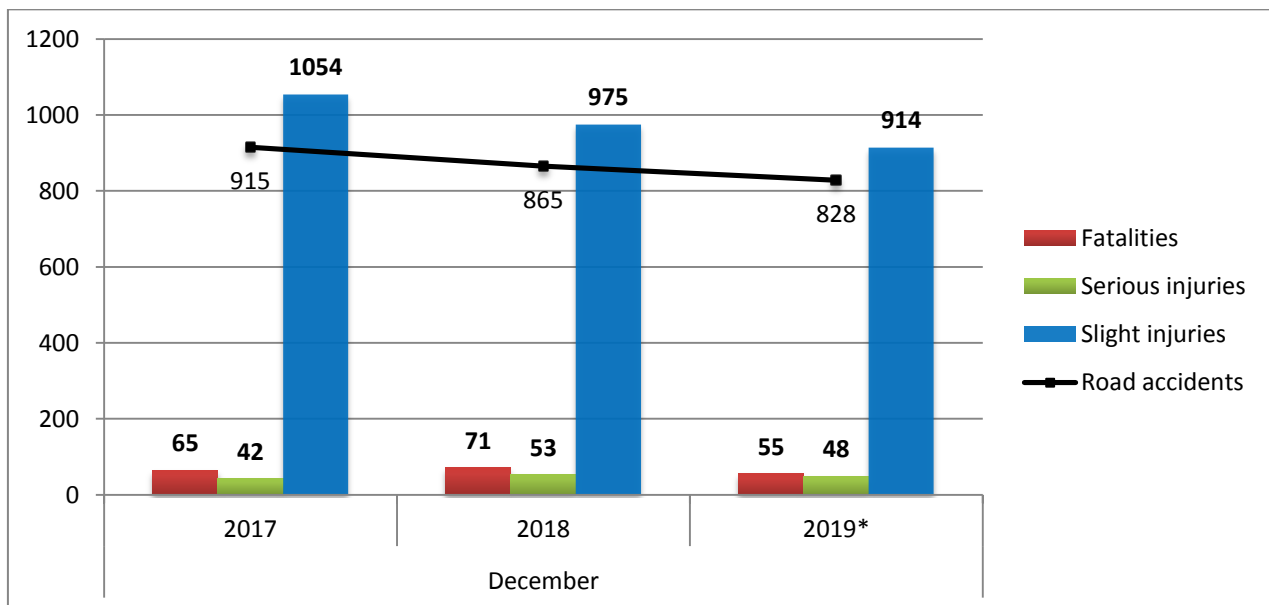
¹ Data for the reference year are provisional until the finalisation of the annual data, which become final 10 months after the end of the reference year. During these 10 months the provisional data are updated on the basis of the data of the Road Accident Forms which are transmitted to ELSTAT by Police Authorities.

Table 1: Road traffic accidents and casualties, December 2017 - 2019*

	December				
	2017	2018	2018/2017 (%)	2019*	2019*/2018 (%)
Road accidents	915	865	-5.5	828	-4.3
Fatalities	65	71	9.2	55	-22.5
Total injuries	1,096	1,028	-6.2	962	-6.4
Serious injuries	42	53	26.2	48	-9.4
Slight injuries	1,054	975	-7.5	914	-6.3

* Provisional data

Graph 2: Road traffic accidents and casualties, December 2017 - 2019*



* Provisional data

Table 2: Road traffic accidents and casualties, by region and department, December 2018 and 2019*

Region and department	Road accidents			Fatalities			Serious injuries			Slight injuries		
	2018	2019*	%	2018	2019*	%	2018	2019*	%	2018	2019*	%
Greece Total	865	828	-4.3	71	55	-22.5	53	48	-9.4	975	914	-6.3
Anatoliki Makedonia and Thraki (East Macedonia and Thrace)	31	29	-6.5	3	7	133.3	4	2	-50.0	31	32	3.2
Drama	4	6	50.0	0	0		0	0		5	7	
Evros	8	4	-50.0	2	0		1	0		6	5	
Kavala	10	5	-50.0	0	1		0	0		15	5	
Xanthi	4	10	150.0	1	3		1	2		2	10	
Rodopi	5	4	-20.0	0	3		2	0		3	5	
Kentriki Makedonia (Central Macedonia)	121	125	3.3	9	6	-33.3	5	5	0.0	130	149	14.6
Imathia	7	2	-71.4	2	0		3	1		3	4	
Thessaloniki	91	104	14.3	3	3		0	3		104	126	
Kilkis	3	6	100.0	0	0		0	0		3	8	
Pella	8	2	-75.0	0	0		1	0		9	2	
Pieria	2	1	-50.0	1	1		1	0		1	1	
Serres	6	5	-16.7	3	2		0	0		3	4	
Chalkidiki	4	5	25.0	0	0		0	1		7	4	
Dytiki Makedonia (West Macedonia)	3	5	66.7	2	4	100.0	0	0	-	2	1	-50.0
Grevena	0	1	-	0	1		0	0		0	0	
Kastoria	0	1	-	0	1		0	0		0	0	
Kozani	0	3	-	0	2		0	0		0	1	
Florina	3	0	-100.0	2	0		0	0		2	0	
Ipeiros (Epirus)	9	12	33.3	3	3	0.0	2	2	0.0	4	17	325.0
Arta	1	1	0.0	1	0		0	0		0	1	
Thesprotia	4	5	25.0	2	1		0	1		2	5	
Ioannina	3	5	66.7	0	1		1	1		2	11	
Preveza	1	1	0.0	0	1		1	0		0	0	
Thessalia (Thessaly)	13	22	69.2	3	2	-33.3	2	4	100.0	13	25	92.3
Karditsa	2	6	200.0	0	1		0	2		2	7	
Larissa	8	6	-25.0	3	0		2	0		8	8	
Magnissia	2	7	250.0	0	1		0	2		2	4	
Trikala	1	3	200.0	0	0		0	0		1	6	
Ionian Nisia (Ionian Islands)	6	9	50.0	0	0	-	0	2	-	7	13	85.7
Zakynthos	1	1	0.0	0	0		0	0		1	1	
Kerkyra	2	2	0.0	0	0		0	1		2	1	
Kefallinia	2	2	0.0	0	0		0	0		2	2	
Lefkada	1	4	300.0	0	0		0	1		2	9	

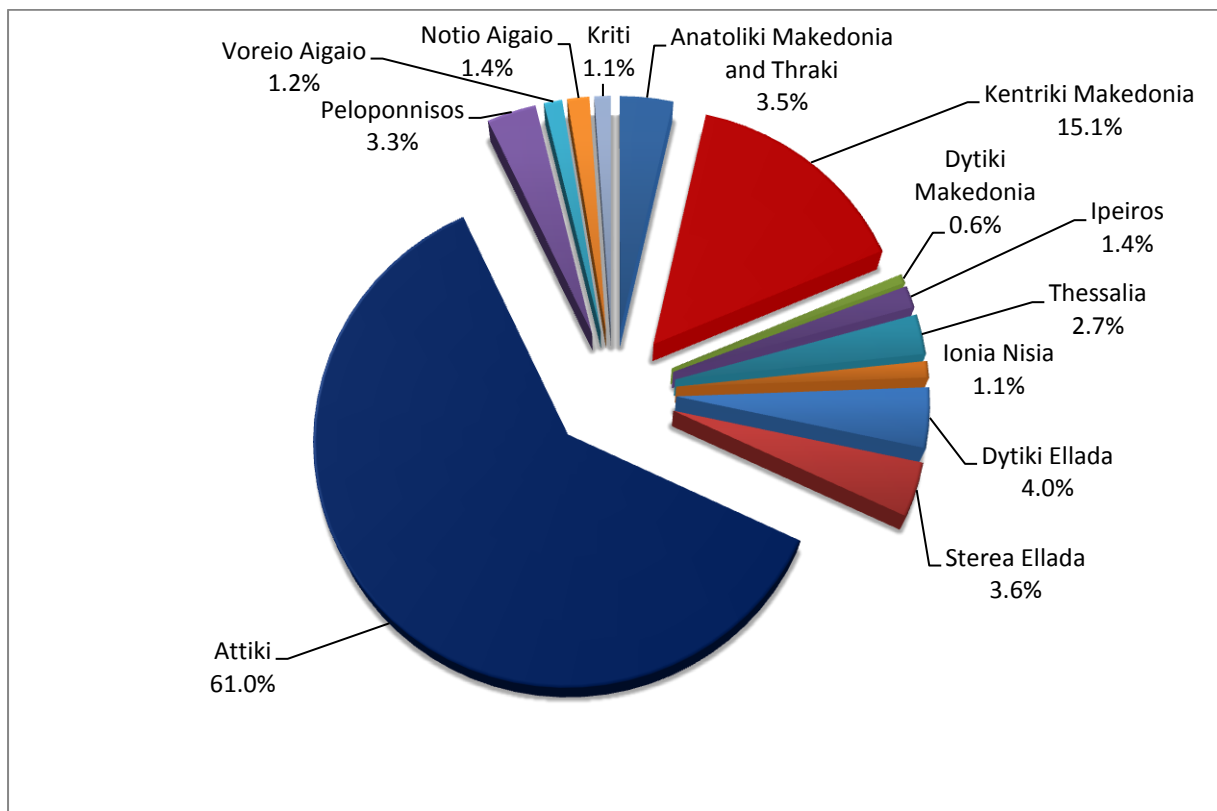
* Provisional data

Table 2: Road traffic accidents and casualties, by region and department, December 2018 and 2019* (Continued)

Region and department	Road accidents			Fatalities			Serious injuries			Slight injuries		
	2018	2019*	%	2018	2019*	%	2018	2019*	%	2018	2019*	%
Dytiki Ellada (West Greece)	33	33	0.0	3	4	33.3	8	4	-50.0	33	31	-6.1
Etolia & Akarnania	15	12	-20.0	2	3		3	3		14	9	
Achaia	12	16	33.3	1	0		3	1		14	17	
Ilia	6	5	-16.7	0	1		2	0		5	5	
Sterea Ellada	43	30	-30.2	7	3	-57.1	5	4	-20.0	58	34	-41.4
Viotia	7	1	-85.7	0	0		2	0		11	1	
Evia	18	16	-11.1	3	1		3	4		18	16	
Evrytania	0	3	-	0	1		0	0		0	2	
Fthiotida	12	9	-25.0	4	1		0	0		20	14	
Fokida	6	1	-83.3	0	0		0	0		9	1	
Attiki (Attica)	509	505	-0.8	18	20	11.1	16	15	-6.3	593	553	-6.7
Peloponnisos (Peloponnese)	48	27	-43.8	13	2	-84.6	6	0	-100.0	61	32	-47.5
Argolida	9	6	-33.3	4	0		1	0		13	9	
Arkadia	9	5	-44.4	0	0		0	0		15	5	
Korinthia	16	11	-31.3	4	2		2	0		19	13	
Lakonia	3	2	-33.3	1	0		1	0		1	2	
Messinia	11	3	-72.7	4	0		2	0		13	3	
Voreio Aigaio (North Aegean)	23	10	-56.5	3	0	-100.0	1	1	0.0	22	13	-40.9
Lesvos	15	4	-73.3	3	0		0	0		15	5	
Samos	4	5	25.0	0	0		1	0		3	8	
Chios	4	1	-75.0	0	0		0	1		4	0	
Notio Aigaio (South Aegean)	12	12	0.0	2	3	50.0	1	4	300.0	10	6	-40.0
Dodekanissos	8	7	-12.5	2	2		1	1		6	5	
Kyklades	4	5	25.0	0	1		0	3		4	1	
Kriti (Crete)	14	9	-35.7	5	1	-80.0	3	5	66.7	11	8	-27.3
Iraklio	8	4	-50.0	0	0		3	3		8	3	
Lassithi	1	4	300.0	1	0		0	2		0	5	
Rethymno	2	1	-50.0	3	1		0	0		0	0	
Chania	3	0	-100.0	1	0		0	0		3	0	

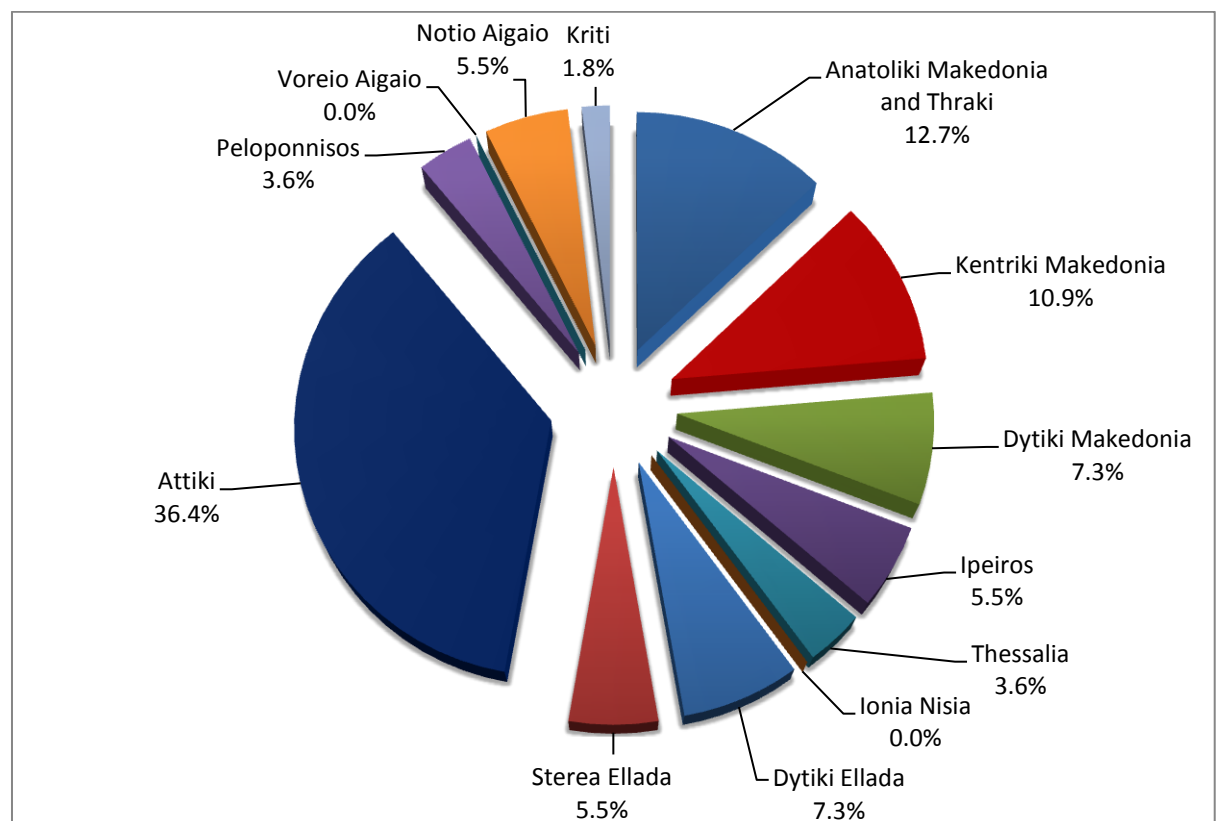
* Provisional data

Graph 3: Road traffic accidents by region, December 2019 *



* Provisional data

Graph 4: Fatalities by region, December 2019 *



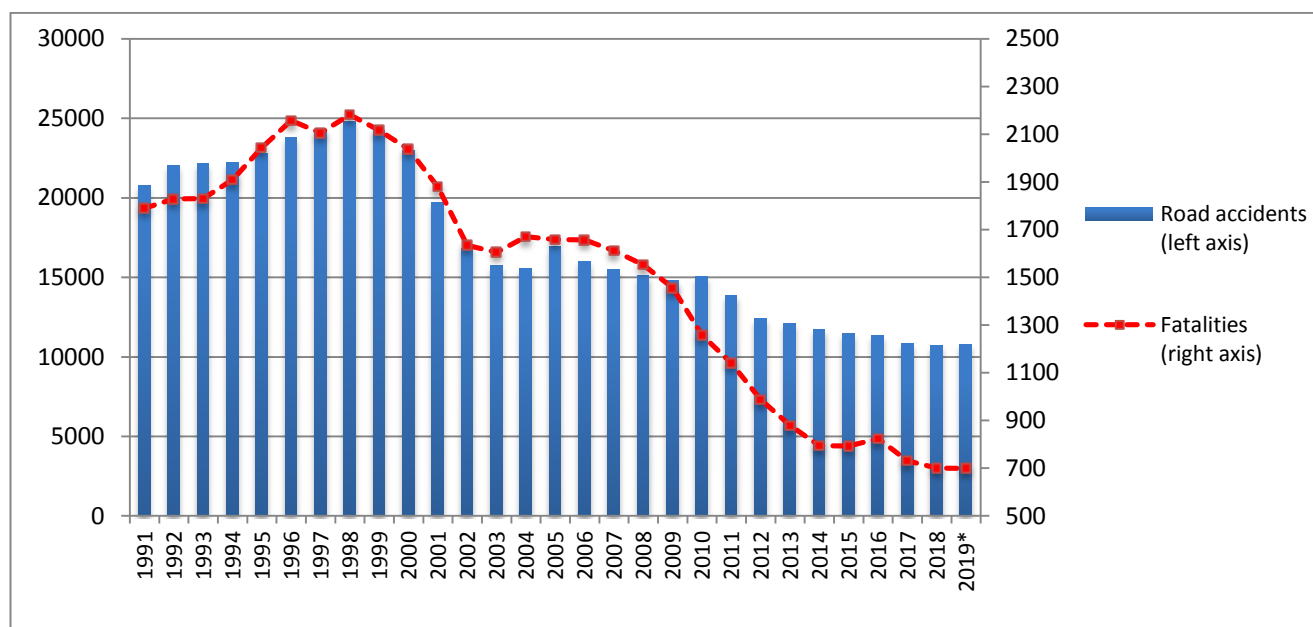
* Provisional data

Table 3: Road traffic accidents and casualties, January - December 2017 - 2019*

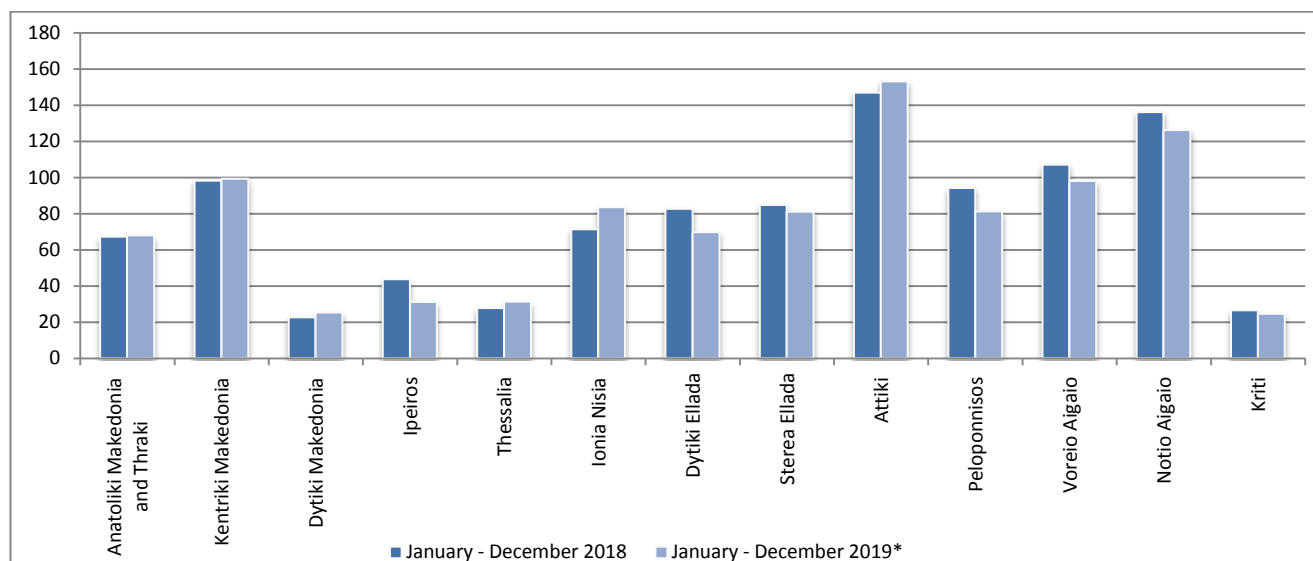
	2017	2018	2019*
	January - December	January - December	January - December
Road Accidents	10,848	10,737	10,762
Annual Change (%) :		-1.0%	0.2%
Fatalities	731	700	699
Annual Change (%) :		-4.2%	-0.1%
Serious injuries	706	727	636
Annual Change (%) :		3.0%	-12.5%
Slight injuries	12,565	12,422	12,059
Annual Change (%) :		-1.1%	-2.9%

* Provisional data

Graph 5: Total road traffic accidents and fatalities, 1991-2019*

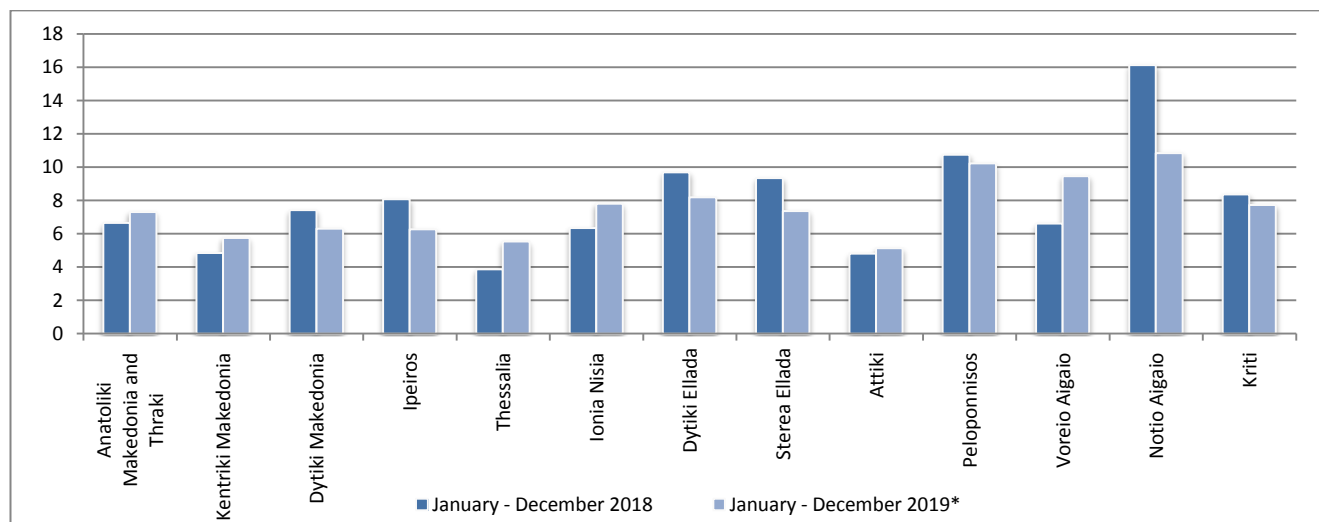


Graph 6: Road traffic accidents per 100,000 inhabitants

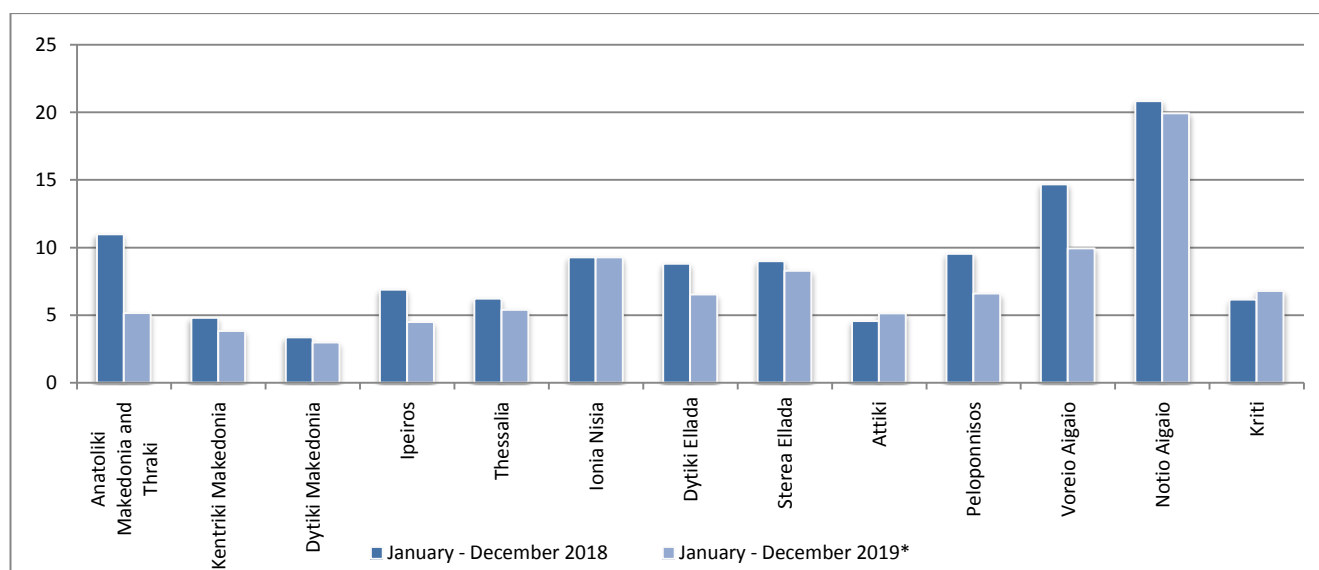


* Provisional data

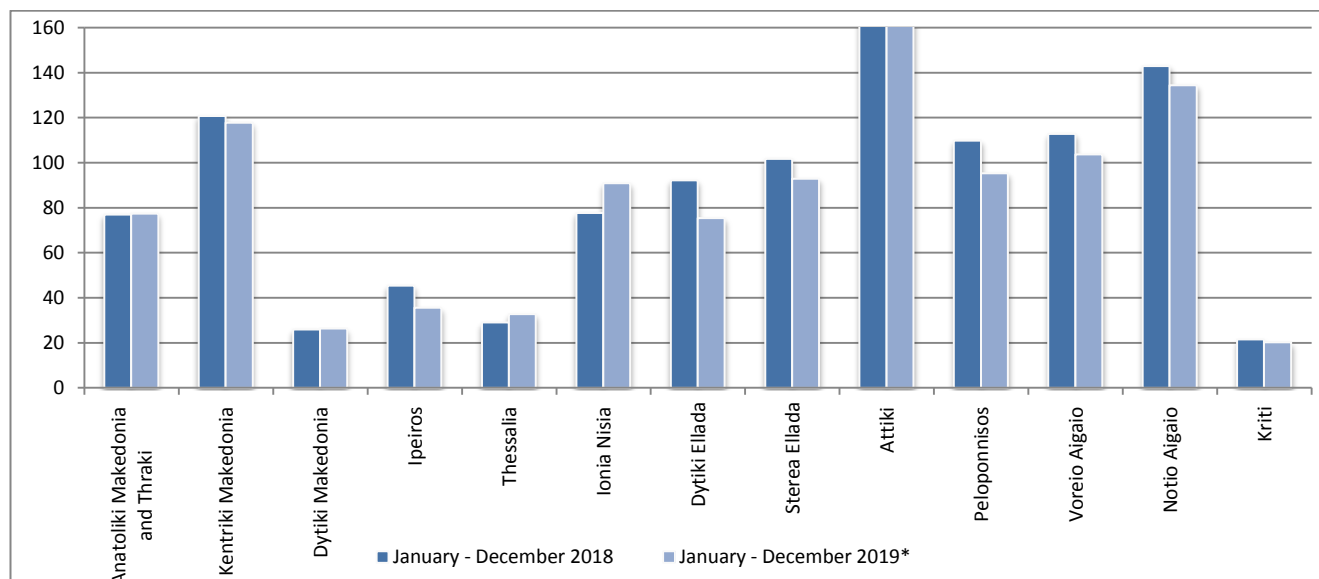
Graph 7: Fatalities per 100,000 inhabitants



Graph 8: Serious injuries per 100,000 inhabitants



Graph 9: Slight injuries per 100,000 inhabitants



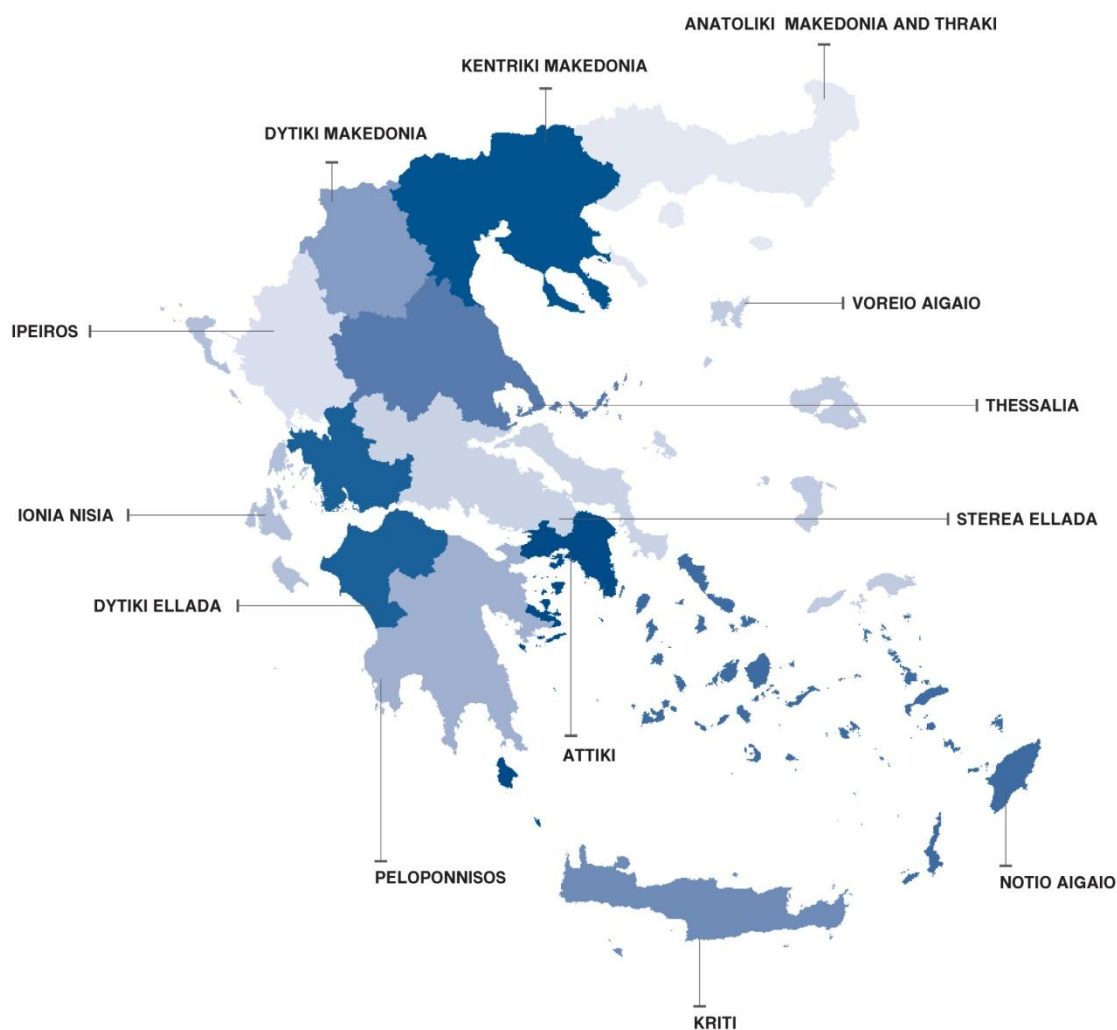
* Provisional data

EXPLANATORY NOTES

Survey on Road Traffic Accidents The Survey on Road Traffic Accidents is conducted on a monthly basis and it records, for each region (see map) and department of Greece and for each month separately, the number of accidents resulting in death or injury, as well as the number of persons injured by categories (drivers, passengers, pedestrians).

On a yearly basis, road traffic accidents are further analyzed. The competent agencies for filling in/collecting the forms on road accidents are the local Police Authorities and the local Port Authorities of Greece.

The lower level of analysis for the place where an injury road accident occurred is the settlement. Data are collected on a monthly basis. The main variables are the following: place of accident, kind of road, casualties, conditions of road surface and type of road.



Legal basis The Survey on Road Traffic Accidents is governed by Council Decision 93/704 of the European Community.

Reference period Monthly.

Availability of data Provisional data are available 2 months after the reference month.
Final data are available 10 months after the reference year.

National Road accident (injury accident): Any accident involving at least one road motor vehicle in motion

definitions on a public road or square to which the public has access (excluding yards, industrial sites or vehicle depot of public transport enterprises), resulting in at least one injured or killed person. Accidents with only material damages are not included.

Fatality (Death): Any person killed immediately or dying within 30 days as a result of an injury accident (This national definition applies since 01.01.1996)

Person injured: Any person who sustained an injury as result of an injury accident, and who normally needs medical treatment.

Serious injury: Any person who sustained an injury as result of an injury accident, such as brain damages, mutilation, multiple injuries, which may result in lack of awareness or which are life-threatening.

Slight injury: Any person injured who sustained minor and not life-threatening injuries.

Vehicle: Include motor vehicles, trolleybuses, motorcycles, bicycles, motorbikes, agricultural and road making machines, animal and hand-drawn vehicles. Railway vehicles are excluded, unless the road accident involves at least one of the aforementioned types of vehicles and therefore, railway vehicles are considered vehicles.

Methodology The forms of the survey are filled in by the local Police Authorities and the local Port Authorities as well.

References More information about Road Traffic Accidents is available on ELSTAT's website and more specifically at the link: <https://www.statistics.gr/en/statistics/-/publication/SDT03/->.